

Contents

Contents	1
Function Description:	2
Notice for use:	2
System requirements:	4
Start to use:	5
1. Appearance and Buttons.....	6
2. Basic operation	8
Application of Attached ArcSoft VideoImpression:.....	14
Introduction interface for software installation	14
Xvid codec Installation:	15
Mediaimpression 2 Installation and Use:	17
VideoImpression 2 Installation and Use:	23
Product specifications:	29
Standard accessories:.....	32

Function Description

Welcome to purchase and use this digital video camera. Before use, please read this user manual carefully.

With this digital video camera, you can take 1300,000 pixels (HD format) .300,000 pixels (VGA format) video clips. With the playback function, you can playback the taken video with this digital video camera; in addition, you can download the video from the digital video camera into your PC. When prepared, this user manual refers to the latest information. The screens and illustrations etc in this user manual are to particularly and visually detail the operation of the digital video camera. Due to technology development and different production batches, the digital video camera herein may be different from that you buy and use.

Notice for use

General:

1. Never open the housing of the digital video camera; otherwise, some parts may cause electric shock.
2. Damp, pressure, collision and overheat may damage this digital video camera.

Memory and storage:

1. SD/MMC/SDHC can be used (but not included in the packing list and maximal capacity 16GB).
2. When buying SD/MMC/SDHC card, be sure to take the digital video camera with you so as to ensure compatibility.
3. When SD/MMC/SDHC card is inserted, the memory of the digital video camera will not function.
4. SD card has a write-protect switch, which can be used to prevent wrong deletion of data.

When this switch is pushed to the bottom and locked, the data in the card will be protected. However, when the card is in write-protect state, it cannot be used for shooting or deletion etc.

5. These memory cards cannot be used for permanent storage of data. You must copy the documents in the digital video camera in the proper storage position.

6. When storing documents into the memory or the memory card, make sure that the size of the documents does not exceed the capacity of the memory.

Maintenance and care:

1. In use, always wear the wrist band so as to prevent slip.

2. Use proper protection sheath to avoid scratching the lens and screen.

3. To clean the lens, firstly blow away the dust on its surface, then use proper cloth or tissue for optical devices to clean the lens. If necessary, use lens cleanser. Never use organic cleanser to clean the digital video camera.

4. Never touch the lens with fingers.

5. When left idle for long, keep the digital video camera with the battery taken out in dry and dark place.

Other notices:

1. When switching video output between LCD display and video devices, be sure to exit from the play or record state.

2. This digital video camera is suitable the environment between 0°C- 40°C (32°F-104°F). Never keep the digital video camera in the place at extremely high temperature, such as in the car parking under the burning sun, or with much damp. In order to prevent the digital video camera from condensation, when moving from a cold place to a warm place, be sure to keep it in sealed plastic bag, and open the bag and take it out when the digital video camera reaches the indoor temperature.

3. TV programs, movies, music, images and other resources may be protected by copyright;

therefore, without prior permission, the shooting/use of these resources may violate copyright laws and regulations related. Please note that the resources under the protection of copyright can be used within the permission of related laws and regulations.

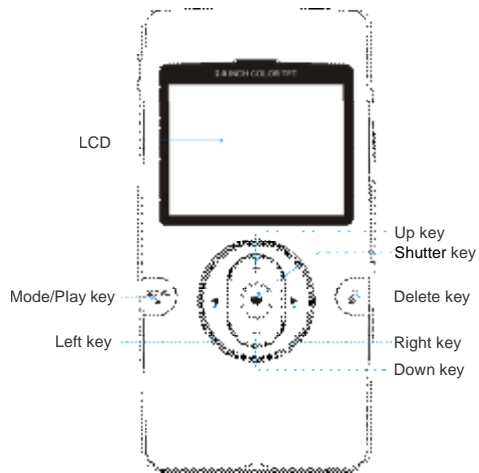
System requirements

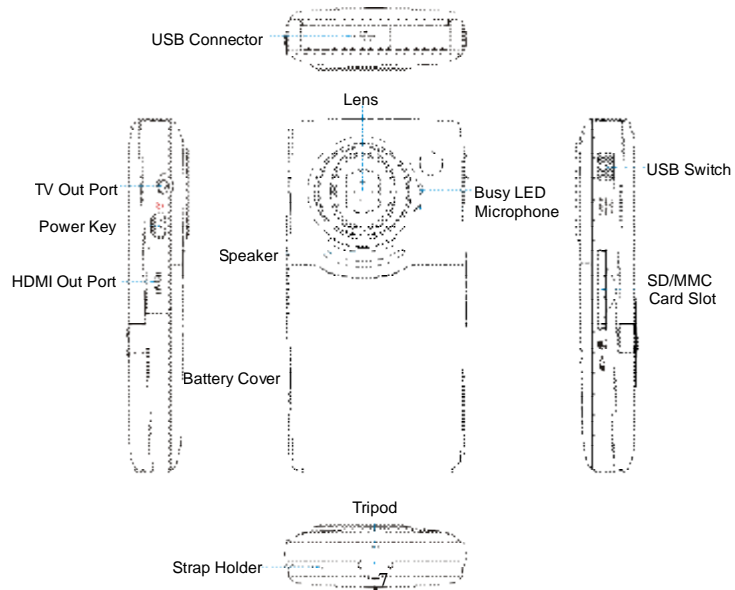
When operating and using this digital video camera, be sure to meet the requirements on the basic system for computer. It is strongly recommended to use the best computer units to operate the camera so as to bring its functions into full play. Below are the requirements on the basic system:

Operation System	Microsoft Windows 2000,XP, vista
CPU	Above Intel PIII667 or CPU of equal performance
Memory	Above 128 MB
Sound card and display card	DirectX8 or above.
CD-ROM	4× speed or above
Hard Disk	1 GB space above useable
Other	One standard USB 1.1 or USB 2.0 port

Start to use

1. Appearance and Buttons





2. Basic operation

2.1 Install battery

Press / slide down the Battery Cover and insert lithium battery. Align with correct polarity of battery terminals. Close the Battery Cover.



2.2 Charge Battery

1. Power off the camera.
2. Connect the camera to the computer USB port or the power adapter with USB cable to charge the battery.
3. During charging, Busy light is on and will be off when the battery is fully charged.

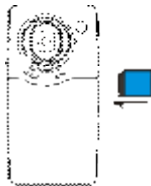
2.3 Use SD/MMC/SDHC card

Insert the SD Memory card into the SD/MCC Card Slot. Push it down until the card stays latched. Do not force – check card's position according to the position mark on the camera.

Push and release inserted card if you wish to remove or replace the card.

Turn your camcorder OFF before inserting / removing the SD Card.

- Note that the SD Card has a tiny LOCK switch on the side. Set the switch to un-LOCK position to be able to store recorded videos, still pictures on inserted SD Memory Card.



2.4 Power on/off

In power-off state, press and hold the power key to power on the camera.

In power-on state, press the power key to power off the camera.

In power-on state, let the camera idle for 1 minute to power off the camera automatically.

In power-on state, when battery level is very low, the camera will turn off after several seconds. You must replace the batteries.

2.5 Setup menu

Press the shutter key until display setup menu when power on the video camera. Setup menu can set Auto power off, Buzzer, LCD brightness, TV output, Date/Time, Light frequency and Language option. Besides format internal memory/SD card, Default setting the video camera, Examine the video camera currently software version. Use the

up/down/left/right key choose menu, press the shutter key enter to submenu, pitch on menu background is highlight when choose menu.

2.6 Change mode

After power on, it will enter video record mode, press Left/Right key to change mode within video record, will go to the playback mode.

2.7 Change resolution

You can press the mode/play key to change video resolution in video model.

Press the mode/play key. LCD screen will display “HD” and “VGA” indicating selected resolution.

2.8 Video record

In video record mode, press shutter key to begin video recording, press the shutter key again to stop recording.

Press up key or down key can zoom in or zoom out the image.

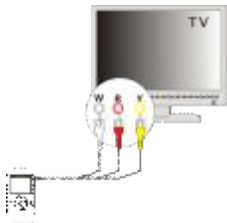
2.9 Playback videos

In playback mode, press left or right key to select another file.

Press mode/play key to begin play video, during playing video, press mode/play key to pause play video, press the shutter key to stop play video.

Note:

- I While the memory is full or the SD card was locked, when you press the Shutter key, the camera will not recording.
- I Before insert or remove the card, please turn off the camera first.



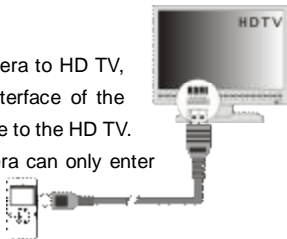
2.10 TV output

After the camera is powered on, insert the terminal of the TV cable into the TV output port of the camera, the yellow port of the other terminal should be connected to VIDEO IN port of TV, red(or white) port of the other terminal should be connected to AUDIO IN port of TV.

2.11 HDMI output

If you want to output the image and sound in video camera to HD TV, please insert the HDMI cable (Optional) to the HDMI interface of the video camera, connect the other terminal of the HDMI cable to the HD TV.

Note: During the period of HDMI output, the video camera can only enter playback mode.



2.12 Delete files

When in playback mode .Press the delete key will display Delete menu, Delete menu have three option: No , All and Yes . Default option is No .Left/Right key can choose the Yes or All. Shutter key confirm currently option. Choose the No and press the shutter key ,will display “Not Deleted” and return to playback .If choose the All option ,Press the shutter key once to display “Delete all videos?”, press the shutter key again to carry out deletion and display “Deleted”.

When there are no files in the memory: Go to the playback mode/play key will display “No File”.

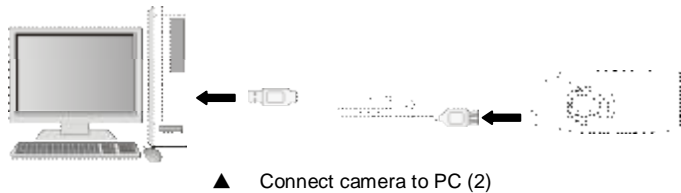
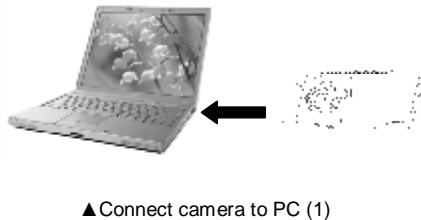
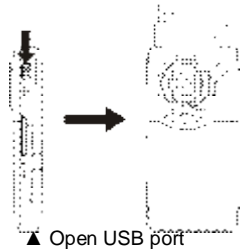
2.13 Connect to PC

1. Slide the USB Switch UP to extend the USB connector. And turn the camcorder ON.
2. Insert camcorder USB connector into computer's USB port, or use supplied USB extension cable to make connection.

2.14 Download files from camera to PC

1. After connecting to computer, go to "My Computer" and open the "Removable Disk." The videos will be saved in the \DCIM\ 100MEDIA folder in the removable disk. Choose the desired video in the 100MEDIA folder and copy (drag with mouse) it into the target folder in the HD of the computer.
2. You can use ArcSoft VideoImpression to edit videos.

3. ArcSoft Videolimpression can be installed from CD attached.



Application of Attached ArcSoft VideoImpression

There are three software in CD provided for image processing: Xvid codec, MediaImpression and VideoImpression.

Introduction interface for software installation

Put the CD attached into the CD-ROM of the computer, then the following menu will occur:

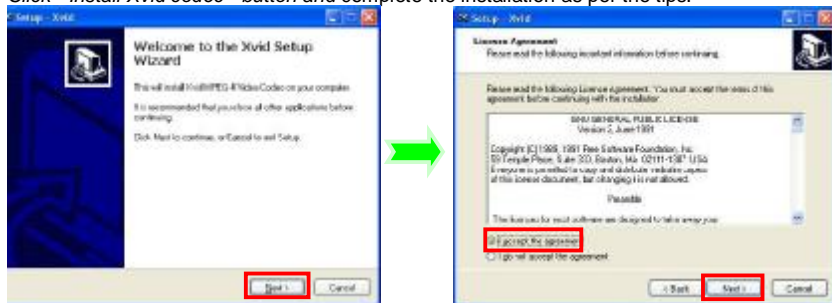


- I If the CD driver does not automatically carry out or close such function, please click **autorun.exe** program under the root directory of the CD.

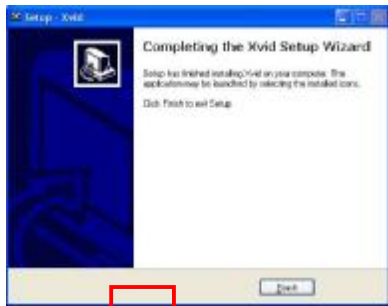
Xvid codec Installation:

Instal Xvid codec:

Click " Install Xvid codec " button and complete the installation as per the tips.





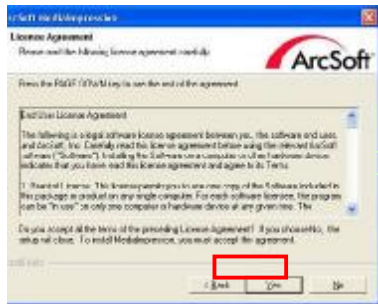
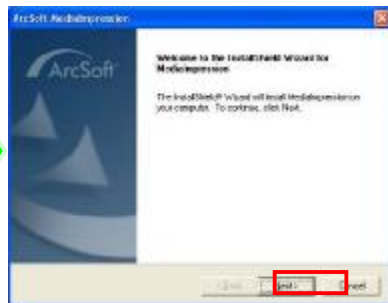


Notice: If you want to play recorded video on your computer, please install Xvid codec.

Mediaimpression 2 Installation and Use:

Install Mediaimpression2:

Click "Install Mediaimpression" button and complete the installation as per the tips.



18

After installation, please restart the computer.

After installation, please restart the computer.

Run MediaImpression 2:

Double click the  icon on the desktop or follow “Start → Programs” to open:

MediaImpression5



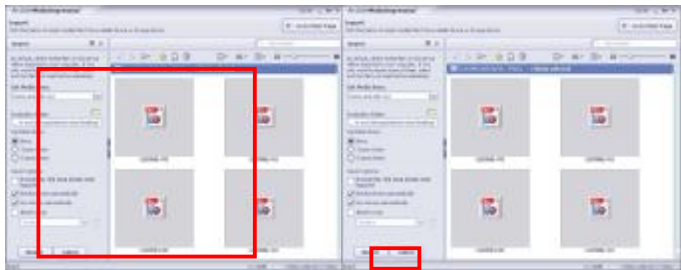
After starting MediaImpression5, click the “Import” to import the media.



Choose the video camera storage and choose the output location.



Choose require file and click the import, selected file will be stored in the output location.



Click "Go to start page" to return the main screen, click the "Video" or "All media" to use the YouTube function



Choose file and click the “upload to YouTube.”



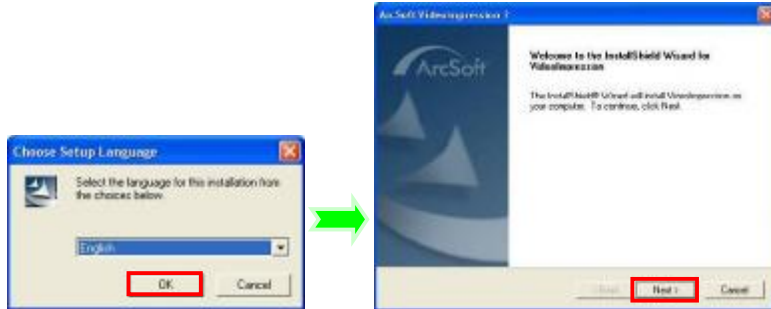
Enter you username and password to login the You Tube, execute upload.

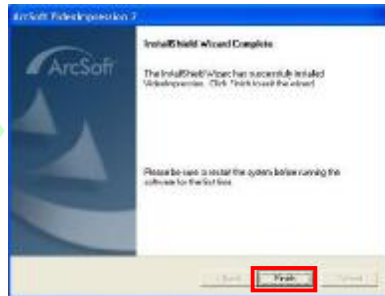
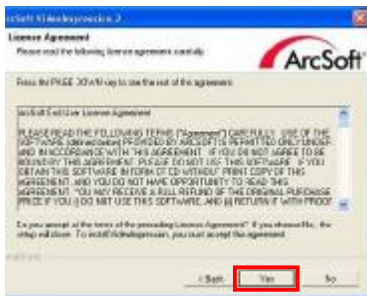


VideImpression 2 Installation and Use:

Install VideImpression 2:

Click "Install VideImpression" button and complete the installation as per the tips.






After installation, please restart the computer.


Run VideoImpression 2:



Double click the  icon on the desktop or follow "Start → Programs" to open

VideoImpression 2.



Choose  to find the desired video clip.



5

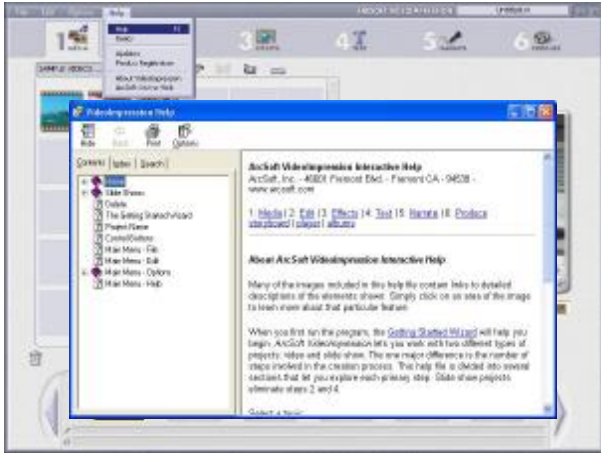


Choose and introduce the desired video clip into VideoImpression2.



In VideoImpression, you can edit the introduced video clip.

For other detailed operation, press F1 Help menu (as indicated below) to understand more power functions of this software.



Product specifications:

Image sensor	1.3 Mega Pixels
Function mode	Record, playback, mobile disk, deletion
Lens	F2.8, f=3.1mm
Focus range	120cm~infinite
Digital focusing	4×
Shutter	Electronic
LCD display	2.0 inch TFT Display
Resolution	Video:HD 1280×720, VGA 640x480
White balance	Automatic
Exposure	Automatic
File format	AVI (Xvid)
Video out	TV out, HD TV out
Storage media	SD/MMC/SDHC card(max. 16GB)
USB port	USB2.0 port
Dimension (LxWxH)	110mm × 57mm × 19.5mm

This device complies with part 15 of the FCC rules. Operation is subject to the following two conditions: (1) this device may not cause harmful interference, and (2) this device must accept any interference received, including interference that may cause undesired operation.

Warning: Changes or modifications to this unit not expressly approved by the party responsible for compliance could void the user's authority to operate the equipment.

NOTE: This equipment has been tested and found to comply with the limits for a Class B digital device, pursuant to Part 15 of the FCC Rules. These limits are designed to provide reasonable protection against harmful interference in a residential installation. This equipment generates, uses and can radiate radio frequency energy and, if not installed and used in accordance with the instructions, may cause harmful interference to radio communications.

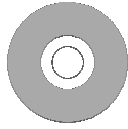
However, there is no guarantee that interference will not occur in a particular installation. If this equipment does cause harmful interference to radio or television reception, which can be determined by turning the equipment off and on, the user is encouraged to try to correct the interference by one or more of the following measures:

- Reorient or relocate the receiving antenna.
- Increase the separation between the equipment and receiver.

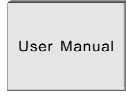
- Connect the equipment into an outlet on a circuit different from that to which the receiver is connected.
- Consult the dealer or an experienced radio/TV technician for help.

Note: The AV Out cable with one ferrite core and HDMI cable with one ferrite core are designed for exclusive use with this product. Don't use others for this product. Connect PC Directly by USB port and don't use extended USB cable.

Standard accessories



Installation CD



User manual



TV cable



HDMI cable