

slick®



Digital Video Camera

Model DC-14S

FCC information

FCC Part 15

This equipment has been tested and found to comply with the requirements for a Class B digital device under Part 15 of the Federal Communications Commission (FCC) rules. These requirements are intended to provide reasonable protection against harmful interference in a residential installation. This equipment generates, uses and can radiate radio frequency energy and, if not installed and used in accordance with the instructions, may cause harmful interference to radio communications. However, there is no guarantee that interference will not occur in a particular installation. If this equipment does cause harmful interference to radio or television reception, which can be determined by turning the equipment off and on, the user is encouraged to try to correct the interference by one or more of the following measures:

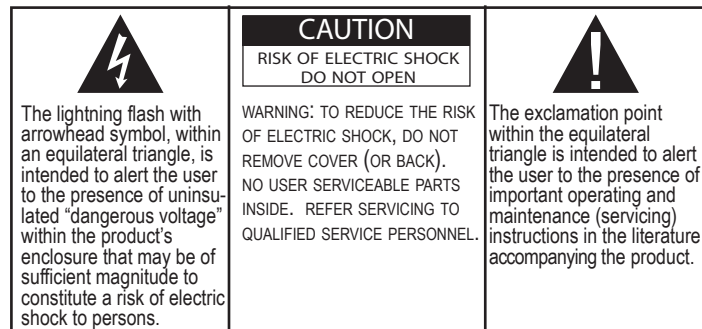
- Re-orient or relocate the receiving antenna.
- Increase the separation between the equipment and receiver.
- Connect the equipment into an outlet on a circuit different from that to which the receiver is connected.
- Consult the dealer or an experienced radio/TV technician for help.

Do not attempt to repair or modify this equipment.

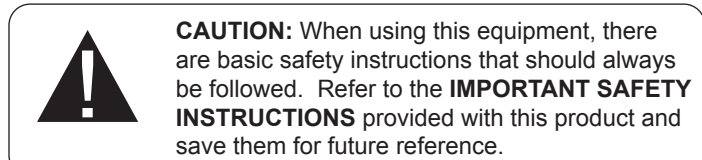
Warning: Changes or modifications to this equipment not expressly approved by the party responsible for compliance could void the user's authority to operate the equipment.

WARNING:

TO PREVENT FIRE OR ELECTRICAL SHOCK HAZARD, DO NOT EXPOSE THIS PRODUCT TO RAIN OR MOISTURE.



Rating plate and caution marking are marked on the bottom enclosure of the apparatus.



- Do not mix old and new batteries
- Do not mix alkaline, standard (carbon-zinc), or rechargeable (ni-cad, ni-mh, etc) batteries

Important safety instructions

NOTE: Some of the precautions below may not apply to your product, e.g.: **Battery and power cord precautions.**

When using your telephone equipment, basic safety precautions should always be followed to reduce the risk of fire, electric shock and injury, including the following:

1. Read and understand all instructions.
2. Follow all warnings and instructions marked on the product.
3. Unplug this product from the wall outlet before cleaning. Do not use liquid or aerosol cleaners. Use a damp cloth for cleaning.
4. Do not use this product near water (for example, near a bath tub, kitchen sink or swimming pool).
5. Do not place this product on an unstable surface.
6. Slots and openings in the back or bottom of this product are provided for ventilation. To protect them from overheating, these openings must not be blocked by placing the product on a soft surface such as a bed, sofa or rug. This product should never be placed near or over a radiator or heat register. This product should not be placed in any area where proper ventilation is not provided.
7. Never push objects of any kind into the ventilation slots of this product as they may touch dangerous voltage points or create a short circuit that could result in a risk of fire or electric shock. Never spill liquid of any kind on the product.
8. Use only the power cord and batteries indicated in this manual.
9. This product should be operated only from the type of power source indicated on the marking label. If you are not sure of the type of power supply in your home, consult your dealer or local power company.
10. Plug the adaptor to the socket - outlet that is closest to the equipment and which is easily accessible.
11. Do not allow anything to rest on the power cord. Do not install this product where the cord may have anyone walking on it.
12. To reduce the risk of electric shock, do not disassemble this product, but take it to an authorized service facility. Opening or removing parts of the telephone base or handset other than specified access doors may expose you to dangerous voltages or other risks. Incorrect reassembling can cause electric shock when the product is subsequently used.
13. Do not overload wall outlets and extension cords as this can result in the risk of fire or electric shock.
14. The power adapter is intended to be correctly oriented in a vertical or floor mount position. The prongs are not designed to hold the plug in place if it is plugged into a ceiling or an under-the-table/cabinet outlet.
15. Unplug this product from the wall outlet and refer servicing to an authorized service facility under the following conditions:
 - A. When the power supply cord or plug is damaged or frayed.
 - B. If liquid has been spilled onto the product.
 - C. If the product has been exposed to rain or water.
 - D. If the product does not operate normally by following the operating instructions. Adjust only those controls that are covered by the operating instructions, as improper adjustment of other controls may result in damage and often requires extensive work by an authorized technician to restore the product to normal operation.
 - E. If the product has been dropped and damaged.
 - F. If the product exhibits a distinct change in performance.
16. Avoid using a telephone (other than cordless) during an electrical storm. There is a remote risk of electric shock from lightning.
17. Do not use the telephone to report a gas leak in the vicinity of the leak.
18. Do not dispose of batteries in a fire. They may explode. Check with local codes for possible special disposal instructions.

For Products That Require Batteries

Important Battery Precautions

- Use only the type of battery specified in this user manual
- Batteries may present a risk of fire, explosion, or chemical burn if abused. Do not try to charge a battery that is not intended to be recharged.
- Do not dispose of the battery(ies) in a fire. They may explode. Check with local codes for disposal instructions.
- Non-rechargeable batteries, such as alkaline batteries, may leak if left in your product for a long period of time. Remove the batteries from the product if you are not going to use it for a month or more.
- If your product uses more than one battery, do not mix types and make sure they are inserted correctly. Mixing different types of batteries or inserting them incorrectly, may cause them to leak.
- Discard any leaky or deformed battery immediately. Leakage from battery acid can cause skin burns or other personal injury.
- Please help to protect the environment by recycling or disposing of batteries according to federal, state, and local regulations.

SAVE THESE INSTRUCTIONS

Product package contents

- Digital camera
- Software CD
- User's manual
- USB cable

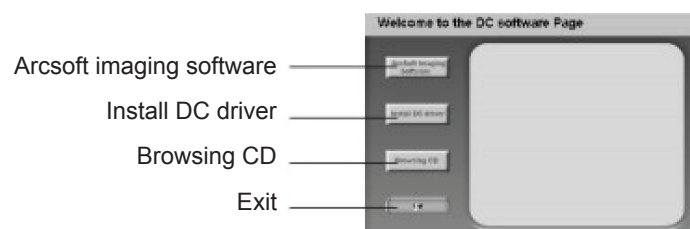
System requirements

- Win98/2000/ME/XP
- 125 MB free hard disk space or above, 64 MB or more RAM
- Color monitor (suggest at least 800 x 600 24 bit or more above)
- Available USB interface and CD-ROM

Energy status

In order to save the energy of battery, if the camera is not used in 30s, the camera will auto enter the energy saving status.

Software installation



NOTE: If your computer system is Win98, you must set up the document name E:/Win/DIRECTX8.1b REDIST PACKAGE.EXE (E is CD driver) before you set up driver program of the digital camera.

Take photos

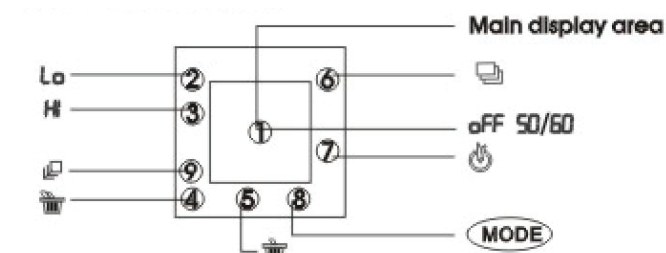
1. Press function button to open the camera and "HI" will show on LCD at the back of camera. The camera will give out one "beep" sound indicating the camera having enter into working state.
2. Select required mode to thake photo. (Please refer to the details of Camera Function Operation).
3. Hold the camera steadily, and press the shutter button to take photos.
4. The buzzer beeps once when the photo has been taken.
5. The LCD will show "0" when no more pictures can be taken.

Shooting images

1. Please hold the camers steady when taking photos.
2. The quality of light will affect the picture quality.

Camera functions control

LCD Diagram directions



Press the select button to select the functions of the digital camera. The function diagram will show on the LCD display on the back of the digital camera as follows:

- OFF - Power off the camera
- Auto shoot
- Continuous shoot
- Take three photos continuously
- Delete all photos in the memory
- Delete the last photo
- MODE - HI means change to CIF mode, LO means change to QCIF mode
- "Hd" or "Ld" - It is photo compression ratio selection. "Hd" means change to high compression and "Ld" means change to low compression. Higher compression ratio means you may store more photos.
- "50" or "60" - "50" or "60" to select the frequency of light used indoors. "50" means change to 50HZ, and "60" means change to 60 HZ.

Turn on the camera

Press the function button to turn the camera on.

Turn off the camera

1. Press the function button to select "oFF" shown on the LCD display.
2. Press the shutter utton within 5 seconds to turn off the camera.

Auto-shoot mode

1. Press the function button to select " " shown on the LCD display.
2. Press the shutter button within 5 seconds to power activate the 10 second timers. The digital camera will beep once every second.
3. After 10 seconds, the camera will beep once indicate that the photo has been taken.

AVI mode

1. Press the Function button to select " " shown on the LCD display.
 2. Press the Shutter button within 5 seconds to activate the continuous shooting mode and do not release the Shutter button until you want to stop shooting. The camera will beep once for each photo taken till the shutter button released or the memory is full.
 3. Under the continuous shooting mode, the photos are taken in QCIF mode and saved as a video format.
 4. Under the continuous mode photo shooting, the shooting may fail due to poor lighting.
- NOTE:** The photos taken by *continyous mode* will be saved as an AVI format in the appointed place. You may open it directly from the photo download software.

Delete all photos

1. Press the Function button to select the " " icon shown on the LCD display.
2. Press the Shutter button the photo counter will flash. Press the Shutter button again within 5 seconds will delete all the photos stored in the memory.

Delete singe photo

1. Press the Function button to select the " " icon shown on the LCD display.
2. Press the Shutter button once within 5 seconds to delete the last photo taken.

Take three photos continuously

1. Press the Function button to select the " " icon shown on the LCD display.
2. Press the Shutter button within 5 seconds to take three photos continuously.

Photo resolution selection

NOTE: The resolution status will always shoe oon the LCD display in smal character.

1. Press Function button to select Mode character show on LCD.
2. "HI" means CIF mode 352 x 352 pixels. "LO" means QCIF mode 176 x144 pixels.
3. When you select Mode function, press the Shutter button once to switch between the HI mode or the LO mode. The HI mode woll allow you to take 18 photos and LO mode will allow yo to take 64 photos.

Photo compression ratio selection

There are "Hd" or "Ld" compression ratio selectio for the photos stored in the memory. The higher the compression, the more photos you can take without having to download them to your PC. YOU can take up to 150 phos in the "Hd" mode when you have the low resolution (LO) setting preset on lyour camera (see the photo resolution section above).

Fluorescent lamp requency selection

1. Please keep the frequency of camera in line with that of sunlight system
2. Generally speaking, there is 60 HZ flourescent lamp frequency used in United Statesm Asia. And 50 HZ used in Japan and Europe. If there is a wron gselectuo of frequency, the photo or video shoot will have line bending.

Download photos

When your photo memory device is fully engaged, you can delete the photos to thake more photos. Before you delete the photos you can transmit them into the computer for sotage first.

1. Use USB cable to connect the computer with the digital camera, and the buzzer will give a beep sound indicating the connection is correct.
2. Select the folder "My DSC". You should have two programs in the folder (My DSC2, PC Cam) select "My DSC2".

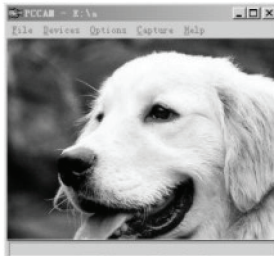


3. Click the icon of a pink camera on the bottom left of the window this open up the "dowload photos" menu, from here you can select to "download all photos", or however many you decide by selecting the "just download " option.

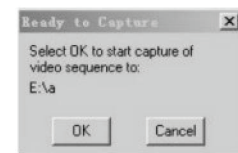


PC-CAMERA

Use USB cable to connect the computer with the digital camera, then souble click the shortcut "PCCam" in the folder "My DSC2". The following interface will appear, you can browse real-time videos.



You can press "Capture" "Start capture" to create a video file.



Use Photolmpression 5 download and edit photo.



Through the Photoimpression5 you can select to download photos, edit photos, print photos, and email photos.

Use Videolmpression2 create and edit video.



Videolmpression2 is a powerful video editing software tool for producing custom movies and slide shows using your own video clips, pictures, and soundtracks.

Specifications

Image sensor: 100K pixels CMOS sensor
Internal Memory: 1 * 16Mb built-in SDRAM
MODES: - Digital Video Recording (no sound)
 - Still Photos
 - PC Camera
Resolution: -352×288 (CIF)
 -176×144 (QCIF)
File formats: 24-bit JPEG /AVI
Storage capacity: CIF 18 Images, compress 50 Images
 QCIF 64 Images, compress 150 Images
Display: Three Digit * 8881CON" Monochrome LCD Display
Interface: USB1.1
Shutter Speed: 1 – 1/10000 seconds
Video Frame Rate: 15–20fps (CIF) 20–30fps (QCIF)
Lens: Fixed;
Focus Range: 20cm – Infinity (Normal)
Aperture: F2.8
Power control: Auto power off after 30 seconds without operation/manual power on&off
Self timer: 10 seconds Delay
Power Source: AAA alkaline battery/ USB power
Low voltage alarm: Auto
Viewfinder: Built-In

Warning: Changes or modifications to this unit not expressly approved by the party responsible for compliance could void the user's authority to operate the equipment.

NOTE: This equipment has been tested and found to comply with the limits for a Class B digital device, pursuant to Part 15 of the FCC Rules. These limits are designed to provide reasonable protection against harmful interference in a residential installation. This equipment generates, uses and can radiate radio frequency energy and, if not installed and used in accordance with the instructions, may cause harmful interference to radio communications.

However, there is no guarantee that interference will not occur in a particular installation. If this equipment does cause harmful interference to radio or television reception, which can be determined by turning the equipment off and on, the user is encouraged to try to correct the interference by one or more of the following measures:

- Reorient or relocate the receiving antenna.
- Increase the separation between the equipment and receiver.
- Connect the equipment into an outlet on a circuit different from that to which the receiver is connected.
- Consult the dealer or an experienced radio/TV technician

Note: The USB extended cable with ferrite bead is designed for exclusive use with this product. Don't use others for this product

Warranty information

90 Days Limited Warranty

In the unlikely event that this product is defective, or does not perform properly, you may within ninety (90) days from your original date of purchase return it to the authorized service center for repair or exchange.

TO OBTAIN WARRANTY SERVICE:

- **Provide proof of the date of purchase within the package (Dated bill of sale).**
- **Prepay all shipping costs to the authorized service center, and remember to insure your return.**
- **Include a return shipping address (no P.O. Boxes), a telephone contact number, and the defective unit within the package.**
- **Describe the defect or reason you are returning the product.**

Your product will be repaired or replaced, at our option, for the same or similar model of equal value if examination by the service center determines this product is defective. Products received damaged as a result of shipping will require you to file a claim with the carrier.

The shipping address of the authorized service center is:

Southern Telecom Inc.
ATTN: Returns Department
14-C 53rd Street
Brooklyn, NY 11232

Should you have any questions or problems concerning this product, please contact our customer service department at:

1-877-768-8483 (Toll Free)

Monday - Thursday: 9AM - 5PM (EST)
Friday: 9AM - 3PM (EST)

or

via e-mail at
cs@southerntelecom.com

Warranty service not provided

This warranty does not cover damage resulting from accident, misuse, abuse, improper installation or operation, lack of reasonable care, and unauthorized modification. This warranty is voided in the event any unauthorized person opens, alters or repairs this product. All products being returned to the authorized service center for repair must be suitably packaged.

Limitation of Warranty:

- THE WARRANTY STATED ABOVE IS THE ONLY WARRANTY APPLICABLE TO THIS PRODUCT. ALL OTHER WARRANTIES, EXPRESS OR IMPLIED (INCLUDING ALL IMPLIED WARRANTIES OF MERCHANTABILITY OR FITNESS FOR A PARTICULAR PURPOSE) ARE HEREBY DISCLAIMED. NO VERBAL OR WRITTEN INFORMATION GIVEN BY SOUTHERN TELECOM INC. ITS AGENTS, OR EMPLOYEES SHALL CREATE A GUARANTY OR IN ANY WAY INCREASE THE SCOPE OF THIS WARRANTY.
- REPAIR OR REPLACEMENT AS PROVIDED UNDER THIS WARRANTY IS THE EXCLUSIVE REMEDY OF THE CONSUMER. SOUTHERN TELECOM INC. SHALL NOT BE LIABLE FOR INCIDENTAL OR CONSEQUENTIAL DAMAGES RESULTING FROM THE USE OF THIS PRODUCT OR ARISING OUT OF ANY BREACH OF ANY EXPRESS OR IMPLIED WARRANTY ON THIS PRODUCT. THIS DISCLAIMER OF WARRANTIES AND LIMITED WARRANTY ARE GOVERNED BY THE LAWS OF THE STATE OF NEW YORK, EXCEPT TO THE EXTENT PROHIBITED BY APPLICABLE LAW, ANY IMPLIED WARRANTY OF MERCHANTABILITY OR FITNESS FOR A PARTICULAR PURPOSE ON THIS PRODUCT IS LIMITED TO THE APPLICABLE WARRANTY PERIOD SET FORTH ABOVE.

Some states do not allow the exclusion nor limitation of incidental or consequential damages, or limitations on how long an implied warranty lasts so the above limitations or exclusions may not apply to you. This warranty gives you specific legal rights, and you also may have other rights that vary from state to state.

slick®

Manufactured by Southern Telecom Inc. Brooklyn, NY 11232

Slick is a registered trademark of Southern Telecom Inc. Brooklyn, NY USA
 © 2009 Southern Telecom Inc. All rights reserved.

Microsoft, the Windows logo, and Windows Media are either registered trademarks or trademarks of Microsoft Corporation in the United States and/or other countries.