



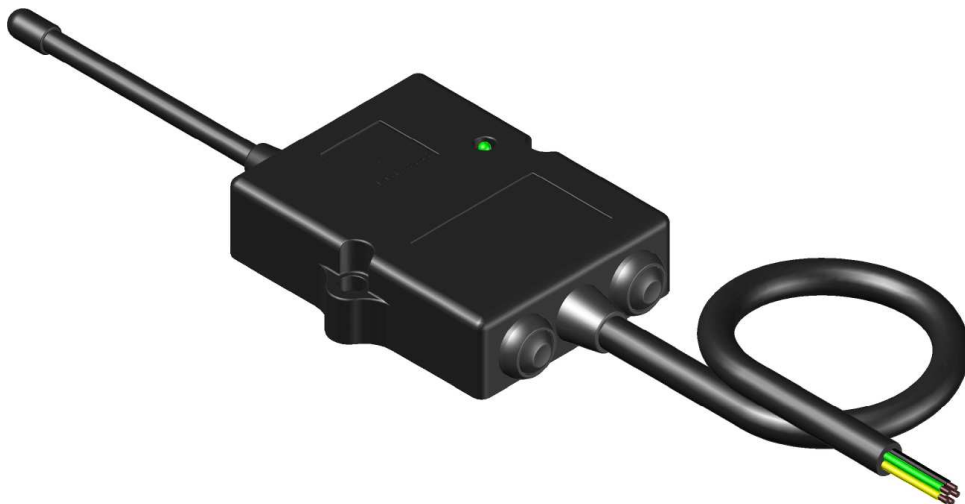
# RTX NIMBLE PLUS

---

## RADIO REMOTE CONTROL 2 COMMAND WITH BUTTONS

### USER AND MAINTENANCE MANUAL

---



---

### WARNINGS

This manual is an essential part of the device and it should be thoroughly kept for later consultation. Carefully read the warnings contained in this manual, concerning safety and a proper preservation of the product. These warnings are always to be carefully read before using the device. SISTEMATICA S.p.A. declines all responsibility for any trouble arising from the non-compliance with these warnings.

- DO NOT TRAVEL WITH THE DEVICE SWITCHED ON
- CONNECT THE SYSTEM ONLY TO THE VEHICLE'S BATTERY
- BEFORE CARRYING OUT ANY MECHANICAL MAINTENANCE OPERATION (WELDING) ON THE VEHICLE, DISCONNECT THE BATTERY CLIPS
- AVOID ATTEMPTING TO REPAIR THE DEVICE BY YOURSELF. REPAIRS PERFORMED BY UNSKILLED PEOPLE CAN CAUSE SERIOUS DAMAGES OR FAILURES. FOR ASSISTANCE, APPLY TO YOUR LOCAL AUTHORIZED SERVICE CENTRE. USE ONLY ORIGINAL SPARE PARTS
- ALWAYS KEEP AT A SAFE DISTANCE FROM THE MOVING PARTS



## TECHNICAL FEATURES

- Number of outputs: 2;
- Frequency bands: ISM 868/915 MHz
- Microprocessor electronics control;
- Dimension: 190x83x22 (with antenna);
- Grade of enclosure: IP67;
- Protection of battery inversion polarity;
- 12/24 VDC (10-30 allowed) rating power supply through connection to the vehicle's battery;
- Typical quiescent current:- 18 mA a 12 V;  
- 14 mA a 24 V;
- Internal resettable fuse: 7 A
- Maximum suppliable current for each channel: 5 A
- Maximum total suppliable current: 7 A
- Receiver Category (EN 300-220-1): 2

## SYSTEM CODING

It is necessary to code the system only if you have to replace the transmitter unit or if you want to use it with a different receiver from the one it was purchased with. Follow the instructions to code the system.

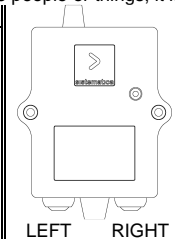
1. Take the power supply off the receiver;
2. Disconnect the white or gray cable from negative pole of the battery and connect it to the positive pole of the battery;
3. Put power into the receiver. The led on the receiver start to blink;
4. Press any 3 keys at the same time on the radio control transmitter within 15 seconds since it has been switched on (also more times if it is necessary);
5. At this point, the coding occurred. The led on the receiver turn off;
6. Take the power supply off the receiver;
7. Disconnect the white or gray cable from positive pole of the battery and connect it to the negative pole of the battery;
8. Put power into the receiver with the connector inserted to verify correct operation (press key START on the transmitter and abilitate the outputs).

## INSTRUCTION FOR USE

For correct use and in order to avoid damage to people or things, it is obligatory to follow these instructions:

### 5 WIRES VERSION

1. Power up the receiver and wait a few swconds (the receiver takes a couple of seconds to be able to operate a sit carries out an self-diagnosis);
2. Press the required button on the receiver to activate the related output:  
LEFT BUTTON → OUT 1  
RIGHT BUTTON → OUT 2
3. Turn off the receiver after finishing operations.



### 7 WIRES VERSION

1. Power up the receiver and wait a few swconds (the receiver takes a couple of seconds to be able to operate a sit carries out an self-diagnosis);
2. Press the required button on the receiver to activate the related output:  
LEFT BUTTON → OUT 1 + M.O. + OUT EM.  
RIGHT BUTTON → OUT 2 + M.O. + OUT EM.
3. Turn off the receiver after finishing operations.

WIRE	FUNCTION
GREEN	OUT 1
YELLOW	OUT 2
WHITE	PAIRING
RED	+ ALIMENTATION
BLACK	- ALIMENTATION

NOTE: is necessary connect white cable with black cable to the negative pole of the battery.  
NOTE: is necessary connect gray cable with black cable to the negative pole of the battery.

WIRE	FUNCTION
GREEN	OUT 1
YELLOW	OUT 2
WHITE	MASTER OUTPUT
PINK	EMERGENCY OUT
GRAY	PAIRING
RED	+ ALIMENTATION
BLACK	- ALIMENTATION



To operate from the transmitter, consult the user manual of the transmitter coupled with the receiver.



## POSITIONING OF THE RECEIVER UNIT, DIMENSION AND DRILLING TEMPLATE

For a proper functioning, locate the receiver type NIMBLE with the cable output downwards, as shown in the picture below:

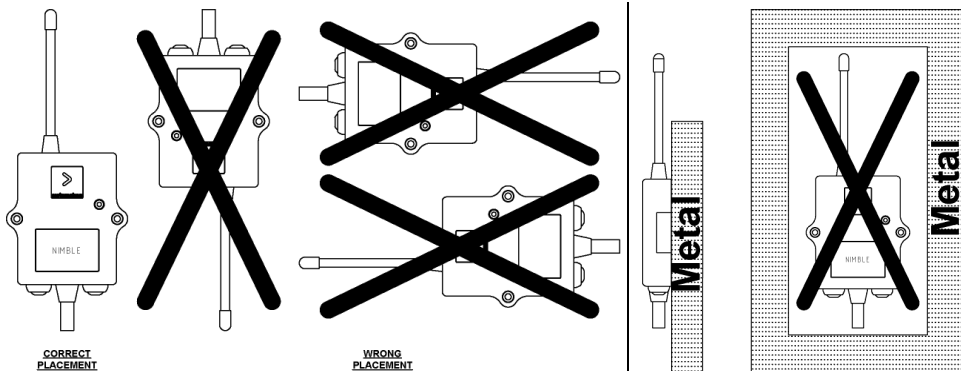


The receiver is provided with an integrated antenna; be sure to locate it at sight, not inside any metal box or screened by ferrous masses (ex. protection carter...)

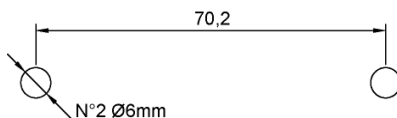


For the receiver installation use supplied fixing screw (or equivalent)

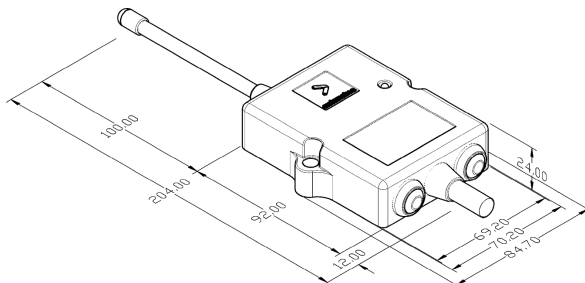
### POSITIONING OF THE RECEIVER NIBLE



### DIMENSION DRILLING TEMPLATE NIMBLE



### DIMENSION BOX RECEIVER NIMBLE



### FUSE

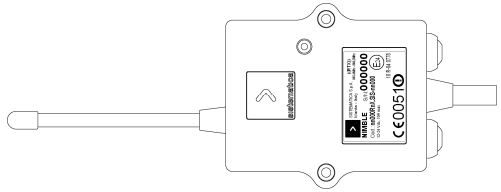
The system is automatically protected from power overload and from possible short-circuit on corresponding outputs by an internal resettable fuse (7A).



## PRODUCT IDENTIFYING LABELS



NIMBLE: product model  
S/N: product serial number  
Cod.: product identification code



### RECEIVER IDENTIFICATION LABEL

### POSITIONING ON THE RECEIVER OF THE IDENTIFICATION LABEL



Removal of the identifying labels entails lapsing of the guarantee conditions and the responsibility of SISTEMATICA S.p.A. with respect to competent bodies

## PROBLEM IDENTIFICATION AND SOLUTION

PROBLEM	POSSIBLE CAUSES	SOLUTIONS
The system does not respond to the controls	Absence of power in the receiver unit	-Check that the emergency mushroom button on the transmitter is in the release position -Check that the vehicle battery is correctly connected to the receiver unit
	Incorrect connection of the cabling to the utilities	-Check the cabling to the users (indicators, electro-valves etc.)
	Incorrect installation of the receiver	-The receiver must not be shielded by ferrous masses (see "POSITIONING OF THE RECEIVER UNIT")
	System not coded	-Re-code the system (see "CODING THE SYSTEM")

## CE MARK

# CE 0051!

CE Declaration of conformity for Sistematica S.p.A. products can be required at: [info@sistematica.it](mailto:info@sistematica.it)

! This product may be subjected to usage restriction. Please contact [info@sistematica.it](mailto:info@sistematica.it) for any further questions.

## FCC STATEMENTS

These devices complies with Part 15 of the FCC rules.

Operation is subject to the following two conditions:

- (1) these devices may not cause harmful interference and
- (2) these devices must accept any interference received, including interference that may cause undesired operation.

NOTE: The manufacturer is not responsible for any radio or tv interference caused by unauthorized modifications to these equipment. Such modifications could void the user's authority to operate the equipments.

SISTEMATICA S.p.A. Grantee Code: O8I



NIMBLE RTX label example  
FCC ID: O8INIMBLE