



SM ELECTRONICS CO., LTD.
www.smtronics.co.kr

www.smtronics.co.kr

polka

SP-2000

Color LCD Display

Digital Music Player

Users Guide



THIS DEVICE COMPLIES WITH PART 15 OF THE FCC RULES. OPERATION IS SUBJECT TO THE FOLLOWING TWO CONDITIONS: (1) THIS DEVICE MAY NOT CAUSE HARMFUL INTERFERENCE, AND (2) THIS DEVICE MUST ACCEPT ANY INTERFERENCE RECEIVED, INCLUDING INTERFERENCE THAT MAY CAUSE UNDESIRE OPERATION.

- **FCC RF**
- **INTERFERENCE STATEMENT**

- **NOTE :**

- This equipment has been tested and found to comply with the limits for a Class B digital device, pursuant to Part 15 of the FCC Rules. These limits are designed to provide reasonable protection against harmful interference in a residential installation.
- This equipment generates, uses and can radiate radio frequency energy and, if not installed and used in accordance with the instructions, may cause harmful interference to radio communications. However, there is no guarantee that interference will not occur in a particular installation.
- If this equipment does cause harmful interference to radio or television reception which can be determined by turning the equipment off and on, the user is encouraged to try to correct the interference by one or more of the following measures.
 - - Reorient or relocate the receiving antenna.
 - - Increase the separation between the equipment and receiver.
 - - Connect the equipment into an outlet on a circuit different from that to which the receiver is connected.
 - - Consult the dealer or an experienced radio, TV technical for help.
 - - Only shielded interface cable should be used.
- Finally, any changes or modifications to the equipment by the user not expressly approved by the grantee or manufacturer could void the users authority to operate such equipment,

We appreciate you for purchasing our product.

Please install driver for Windows98 before using the product and carefully read instruction guide for safety.

uPlease be cautious of disconnecting the USB cable from the product while downloading, due to the possibility of damage to the product.
uAnd also there is a possibility of damage to the product while formatting the product's memory on PC.
uPlease install Windows 98 driver provided on the CD onto your PC.

Copy Right Notice

This user's manual is a property of SM Electronics Co., Ltd. Illegal copy or usage of this user's manual without written consent from SM Electronics Co., Ltd. is strictly prohibited.

This manual can be altered without notice for product improvement.

SM Electronics takes no liability for any damage to data by false usage and operation.

Warranty

1. This product has been tested through strict quality control and test procedures.
2. Repair fees are covered by this warranty in the case of failure during normal usage within 1 year during the warranty period.
3. Repair fees are charged in spite of the failure during the warranty period, if the repair service falls under non-warranty repair.
4. Please keep this warranty note after filling up the warranty form.
5. In the case of product's failure, please contact the place of the purchase or us at the number below.

Non-warranty Service

- Any failure made from improper usage.
- Any failure made from unauthorized disassembly or reassembly of the product.
- Any failure made from natural cause such as fire, salt damage, earthquake, etc.

Model Name		
Serial No		
Purchase Date	M/ D/ Y	
Customer's Name		
Place of Purchase		

Product Name	SP-2000
Size	76.5 * 35.5 * 18 (W * H * D)
Weight	40g (Internal Battery)
Memory	128MB/256MB/512MB
File Transference Speed	5Mbps.USB 1.1
File Type	MP3/WMA/OGG
Ratio between FM Frequency and Noise	50dB
FM Bandwidth	87.5Mhz~108Mhz(Korea, Europe, etc) 76.0Mhz~96.0Mhz (Japan)
Headphone Output	20mW (L) + 20mW (R)
Voice Recording	Approx 36 hours/memory size 512MB standard
Languages	Korean/English/Japanese/French/Chinese
Playback Hours	Approx 16 hours
OS	Windows 98/ME/2000/XP/Mac OS 8.1/Linux 2.4.18
Power Supply	Internal Lithium Polymer Battery

Decoder	MP3/MPEG-1 Layer-3 / WMA/Sampling Rate-8KHz-44.1KHz OGG q1-q10 Bit Rate-8Kbps-192Kbps
WMA Encoder	32KHz-48Kbps / 44.1KHz-64Kbps, 80Kbps, 96Kbps, 128Kbps
Voice Record	Sampling Rate-44.1KHz / Bit Rate-32Kbps
EQ	Normal, Rock, Jazz, Classic, Pop, Techno, Live, User
Codec	24bit Wolfson Codec



SM ELECTRONICS CO., LTD.

1. Product Features

- | | |
|----------------------------|---|
| 1. Accessories | 2 |
| 2. Caution for safe usage | 3 |
| 3. Features | 5 |
| 4. Your player at a glance | 6 |
| 5. Quick Manual | 8 |

2. Before using your device

- | | |
|--|----|
| 1. Install Windows 98 driver | 12 |
| 2. How to connect the device to PC (through USB cable) | 13 |
| 3. Recharging Battery (through USB cable) | 13 |
| 4. Downloading music and other files onto the device | 14 |

3. Basic Functions

- | | |
|---|----|
| 1. Playback (MP3, WMA, OGG, etc) | |
| 2. FM Radio | 16 |
| 3. Recording | 16 |
| 4. Recording from the external audio device (Direct Encoding) | 17 |
| 5. Viewing avatars and images | 18 |
| 6. Reset | 19 |

4. User's Setting

- | | |
|---------------------|----|
| 1. Sound Setting | 20 |
| 2. Display Setting | 22 |
| 3. Record Setting | 23 |
| 4. Play Setting | 24 |
| 5. Timer Setting | 26 |
| 6. System Setting | 26 |
| 7. Firmware Upgrade | 28 |

5. A/S and Customer Services

- | | |
|-----------------------------------|----|
| 1. Troubleshooting | 29 |
| 2. Customer Services and Warranty | |

1. Accessories

See what comes with the device!



Main Device (SP-2000)



USB Cable



Encoding Cable



Neck Strap



Earphone



CD



User's Manual

Accessories can vary depending on the possible improvement of the product features.

2. Caution for safe usage



CAUTION



Please connect the USB cable to your device while it is not playing, not to cause unexpected damage.



Please contact the service center immediately in the case of flooding or unexpected contamination to your player and do not try to repair or disassemble the player on your own.



Please try not to give impact to the player or run while wearing it, due to the possibility of losing it, damage to it, or inflicting injury on other people.



Please keep the player away from dust, high temperature and humidity, soot or magnetic cards, not to cause failure.



MORE



Keep the player away from vibration and impact not to cause damage to the device.

3. Features

• Graphic Color LCD

You can enjoy photos, avatars, and screen savers on the color LCD.

• Setting various screen savers and avatars

You can enjoy your favorable avatars not only when the device is turned on but also while enjoying the music.

Automatic Scaling: Automatically resize the photo to fit it into the size of the display (width: 96 lines). (Screen saver, possible to use it for real-time music play)

BMP 24 Bit True Color Format Screen Saver (SSR)

• Playing MP3/OGG/WMA files and encoding WMA files

You can playMP3 files and OGG, WMA files as well.

You can encode WMA files reducing the size by 60% as compared to that of MP3 files.

• Rechargeable large capacity internal battery

Lithium polymer rechargeable internal battery, 540mA, 3.7V-handy recharge through USB

• Power Navigation

Perfect GUI and pop-up menu, supporting unlimited number of folders, direct file copy, and delete. You can add a new title to the play list.

• FM Radio

Worldwide FM reception, one touch recording

• Playback Tempo Control

You can control the playback tempo for language learning.

• High Quality Sound

3 D sound (SRS-WOW), TruBass, various equalizer, and 24 Bit Codec allow you to experience real-like sound.

• Special Functions

Play List (up to 99 songs) - Creating a list of songs.

Bookmark (up to 99 songs) – For language learning.

Intro – Playing only the beginning of songs for the set period.

Stopwatch – Counting at 1/100 sec up to 10 hours.

Multiple Processing – Processing multiple functions such as file search while listening to music.

• Removable Disk

UMS (USB Mass Storage) class USB v1.1, auto-plug & play, and automatic recognition when connected to PC. (Install driver for Windows 98)

• Firmware Upgrade

Easy firmware upgrade from the web.

• Support Lyric

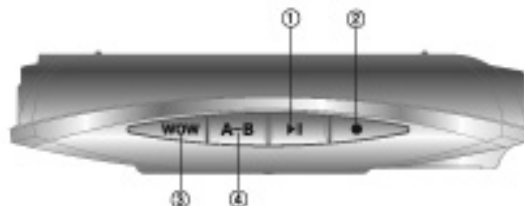
Support lrc files and display jpeg images while playing music.

• Support various OS

Windows 98/ME/NT/2000/XP

Mac OS 8.6 and over

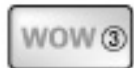
4. Your player at a glance



Power on & off (press and hold then let go)/Play/Pause/File Play List, Saving and deleting FM broadcasting band



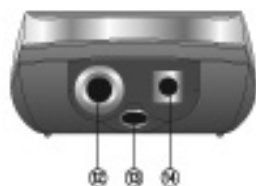
Start, stop recording (click in the Recording Mode)/Repeat the song (click)/Place bookmarks (press and hold then let go)/Lap Time (click in the Stopwatch Mode)/Go back to the previous stage (click in the Menu/Navigation Mode)



3D Sound (click while playing)/Equalizer (press and hold then let go while playing)



Changing the Play Mode, A/P/B/F (click while not playing)
Section Repeat (click while playing)/Presetting the radio channel (click while FM is on.)



12 Earphone Socket

13 Strap Hole

14 Encoding Cable Socket

15 USB Cable Socket



Navigation (click the jog lever)/Move to each of 7 Menu Modes (press and hold then let go)



Move to the next file (click while playing)/Search at high speed (press and hold then let go while playing)
Move the cursor to the right (click in the Menu/Navigation)
Change the radio frequency (click in the Radio Mode)/Automatic search for radio frequency (press and hold then let go)



Move to the previous file (click while playing)/Reverse search at high speed (press and hold and let go while playing)
Move the cursor to the left (click in the Menu/Navigation)
Change the radio frequency (click in the Radio Mode)/Automatic search for radio frequency (press and hold then let go)



Volume Up (click while playing)
Move the cursor up (click in the Menu/Navigation)



Volume Down (click while playing)
Move the cursor down (click in the Menu/Navigation)

10 Hold

11 Microphone

5. Quick Manual

Power On



Press and hold then let go



Mode



Press and hold then let go



Playing MP3 Music



When the power is turned on, you can play a music file in the root folder.



Select a music title



Play the selected title



Volume control

FM Radio



Move to the FM mode



Select the FM mode



Select the frequency



Volume control

Voice Recording



Move to the Voice Recording mode



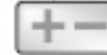
Select the Voice Recording mode



Start Recording

Recorded files are saved in the order of "VORC001".

Start/Stop Recording



Playback in MP3 mode

Line-in Connection



Move to the Encoding mode
Select the Encoding mode and then connect the player to the external device



Start Recording

Recorded files are saved as WMA in the order of "AUDI001".

Start/Stop Recording



Playback in MP3 mode

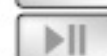
Play List



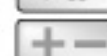
Click the jog lever



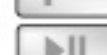
Select the file to put on the list



Activate the pop-up window

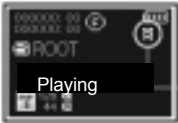


Find and select +Playlist



Save the file on the Play List

Bookmark



Press and hold then let go to place a bookmark

"B" mark will show up when the button is pressed.

Playing files on the Play List



Move to the Play List mode



Select "Open" on the option list to play the file

Click to play the file



Set the Play mode as "P" while not playing



Play the file

Playing the bookmarked files



Move to the Bookmark mode



Select "Open" on the option list to play the file

Click to play the file




Set the Play mode as "B" while not playing



Play the file

Stopwatch




Move to the Stopwatch mode

Start


Lap time counting (up to 10 splits)

Stopwatch is operational in other modes (radio, record and play mode)

Setting Mode



Move to the sub mode



Select each function

Select the menu

Save the menu

Set options

Sound

- User's EQ
- 3D SRS ON
- SRS Setting
- Sound Balance
- EQ Selection

Play

- Boundary
- Repeat Mode
- Random Play Mode
- Intro Time Setting
- Play Speed
- Setting the previous playing position
- Fade-in
- Language

Display

- LCD Lighting Time
- Brightness
- Speed of text running
- Tag Information
- Screen Saver
- Frame Rate
- Lyric Setting

Timer

- Standby Time
- Automatic Turn Off

Record

- Quality of FM Recording
- Quality of Line-in Encoding
- Volume of Line-in Encoding

System

- Search Speed
- Language Setting
- Format
- Automatic Hold
- Initialization
- Memory
- F/W Version

Basic Features

1. Driver Install for Windows 98

It is recommended for Windows 98 users to install the driver before using the device as a removable disk. (For Windows 98 users only)

Step1: Insert the provided CD into the CD Drive of your PC.

Step2: Select Win 98 folder and click install.bat.



TIP

Install98.bat is for installing Win 98 driver.
Different driver name can be displayed depending on PC.
Removable disk is recognized on Windows 2000/ME/XP/Mac 8.6 and over.

Step3: Connect the USB cable to the device.



(After USB connection, the removable disk icon will be displayed on your PC as shown below.)



2. How to connect the device to your PC (through USB Cable)



1. On Windows ME/2000/XP, the device is recognized as "Removable Disk" when it is connected to your PC. (Files are transferable without a driver.)

For Windows 98, please install the driver for Windows 98. (Reference: Driver Install for Windows 98)

2. When the device is connected to your PC, "USB Connect UMS" will be displayed on your device.



Status Window
during file transfer

Caution: Please do not disconnect the USB cable from the device and your PC. Disconnection of the USB cable can damage the device.

3. How to recharge the battery (through USB Cable)

Recharging Battery: Connecting the device and your PC through USB cable will automatically recharge the internal battery. (full recharge in 2 hours).



TIP

The battery indicator will flash during recharging and be turned off on completion of recharging. Please execute "Safely Remove Hardware" to use the device during recharging.

4. Downloading music and other files onto the device

Copying Files (Downloading files onto the device)

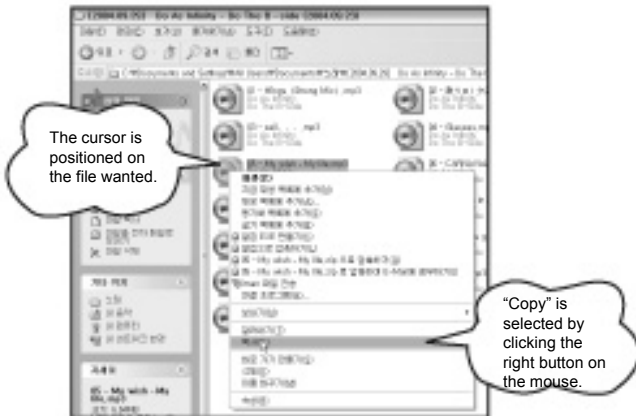
1. Execute the Windows Explorer after securely connecting the device to your PC.



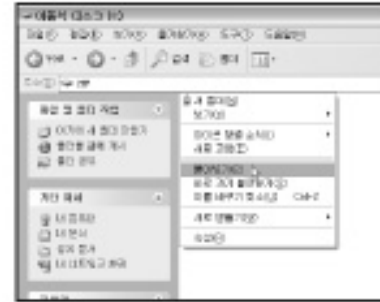
2. Make sure "Removable Disk" is displayed on My Computer window.



3. Select and copy the file wanted. (MP3 songs or images, etc).



4. Paste the copied file onto the "Removable Disk". (Click the right button on the mouse and select "Paste".



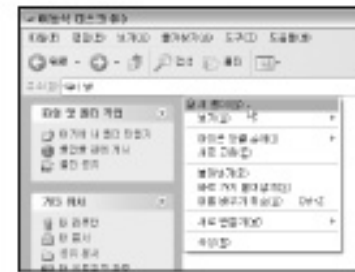
Pasting a file copied from your PC into the removable disk.

- ① Double click the window explorer to open the window
- ② Double click the removable disk.
- ③ On the Removable Disk window, click the right button on the mouse and select paste.
- ④ Now you are transferring the copied file into the removable disk.

Creating a folder on the Removable Disk.

Create folder to properly manage files including music and language.

Ex) Music files in the music folder/language files in the language folder.



To systematically manage files by creating folders: Click the right button on the mouse in the empty space of "Removable Disk" – "New Folder" – And a new folder is created.

Naming the folder

Click the right button on the mouse-select Change Name and name the folder.

Ex) In the case of already created folders such as music folder and language folder, just copy and paste them onto the disk. (Refer to "Paste the copied file..." above)





Basic Functions

1. Playback (MP3, WMA, OGG, etc)

1. Connect the earphone to the device.
2. Deactivate "Hold" key. (No function will work on hold status.)
3. Power on (: press and hold)/Play (click)
4. Select the music title (: click)/High speed rewind and fast forward (push and hold)
5. Volume Control(+ -: click)
6. Changing functions (↔): press and hold the let go)-Play, FM Radio, Record, Line-in, Play List, Bookmark, and Stopwatch. Move to each function (: click).
Selecting functions: select the function with ↔ and move to the sub-functions.
7. WOW Function: WOW button (click) On/Off
EQ Function (Press and hold): Normal, Rock, Jazz, Classic, Pop, User



About Play Mode

- A:** Playing all the files in the folder **F:** Repeat all the files in the folder once
P: Playing files in the Play List **B:** Playing bookmarked files **1:** Playing the selected file once
☒ **Play once** ☒ **Play repeatedly** (press while playing)

2. FM Radio

1. Press ↔ and then select the FM Mode.
2. Change the radio frequency: (: click)
3. Change to Stereo/Mono while playing (: click)
4. Volume Control (+ -: click)
Selecting the radio frequency
 1. Change the radio frequency: (: click)
 2. Automatic search for radio frequency: Auto scan (: press and hold then let go) To stop, (: click)
5. Save the radio frequencies (up to 20)



삭제

Saving FM Radio Channel. (Preset Function)

1. Click the A-B button and select the band with +-. .
2. Press to activate the selection window.
3. Select "Store CH" with +- .
4. Store the channel with .
5. Click or to play.

* Auto Scan: Automatic search for radio channel



3. Recording

In order to record FM Radio:

1. Click to start recording while listening to radio/Click to stop recording.
2. Click to pause while recording – Indicator for recording time will flash.
3. In order to hear the recorded file:

If there is no specific folder, save the recorded file as "FMREC001.WMA" into the Root folder.

(As for voice recording, start recording after checking the available recording time.)



File No

Recording Time

Available Recording Time

In order to record voice:

1. Press ↔ and then move to the Record Mode.
 2. Click to start recording/Click to stop recording.
 3. Click to pause while recording – Indicator for recording time will flash.
- If there is no specific folder, save the recorded file as "VORC001.WMA" into the Root folder. (As for voice recording, start recording after checking the available recording time.)



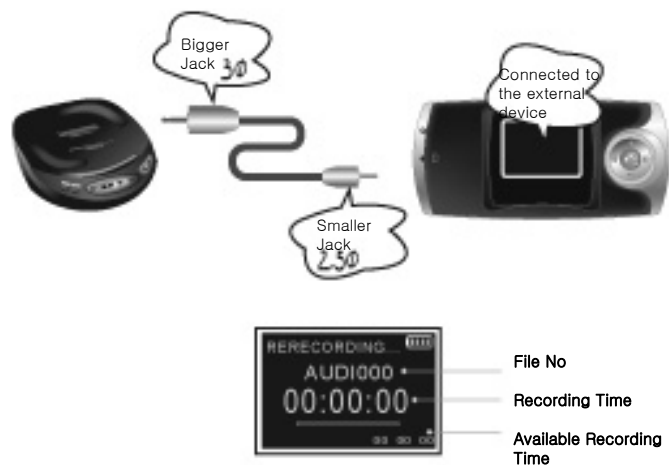
File No

Recording Time

Available Recording Time

4. Recording from the external audio device (Direct Encoding)

Connect the line-in cable jack to the earphone socket of the external audio device (CD player, cassette player, etc) and connect the other jack to the encoding socket of the device (SP-2000).



In order to record from the external device:

1. Press and then move to the Record Mode.
2. Click to start recording/click to stop recording.

3. Click to pause while recording — Indicator for recording time will flash.

If there is no specific folder, save the recorded file as "AUDI001.WMA" into the Root folder. (As for voice recording, start recording after checking the available recording time.)

TIP

All the recorded files can be played in MP3 format.

5. Viewing Avatars and Image Files

In the MP3 mode, click to select an image file (Jpg) and then click or to activate the image file.

Avatar

When the device is turned on, an avatar image can be initially displayed. (Jpg images only. Images as many as 100 files can be displayed. (avata 000 ~ avata 099)) After the initialization is completed, then the device proceeds to the main display.

The image is only displayed within 96 pixels (width). Automatic scaling fits the image into 96 pixels.

Screen Saver

Setting Screen Saver: Move to menu with in the Setting mode to select Screen Saver on the Display menu and select ON.

Setting Screen Saver File: Press and then move to *.ssr file. Click or to activate.

Screen saver must be created as BMP. But it is necessary to change the extension as "ssr" to activate.

How to create SSR file: Resize the image in the aspect ratio of 96*64 and save it as ssr file (*.ssr) (Consecutive display of images is possible in a multiple of 96*64.)

* BMP files must be 24 bit true color images. (compressed files are not supported)

TIP

If the image file is selected among the lyric files, it can be displayed.

Ex) [00:02] I'll never gonna...

[00:04] "File Name.jpg"

[00:06] sing a song again...

*The image file name must be placed within " ".

* Please utilize "SP-2000 Utility" contained on the CD provided with the product.

6. Reset

The reset button is used for sudden failure or malfunction of the device.

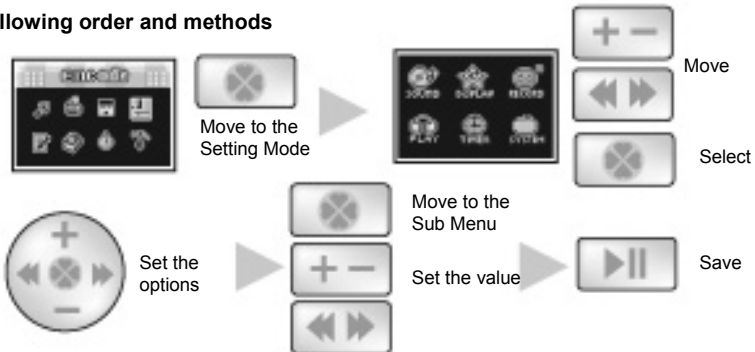


Reset
Button



User's Setting

Following order and methods



1. Sound Setting

User EQ

You can set EQ for your preferences.

- ◀▶ Select the frequency (50hz~14Khz)
- + - Select the level (+12dB~-12dB)
- ▶|| Save the setting



3D SRS ON

You can set 3 dimensional sound.

- + - Select ON/OFF
- ▶|| Save the setting



SRS Setting

Setting 3D SRS sound with 3 options

- ◀▶ Select the Level
- + - Select the option
- ▶|| Save the setting



Sound Balance

Setting the level of output from the speakers of earphone or headphone

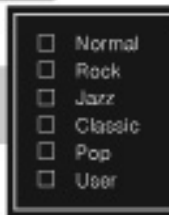
- ◀▶ Select the level
- ▶|| Save the setting



EQ, Select

Selecting 6 types of EQ

- + - Select the option
- ▶|| Save the setting



TIP

SRS Sound: You can enjoy more dimensional sound by changing 3 dimensional sound effects.

Trubass: With deep and low pitch, you can enjoy the grandeur of the sound.

Focus: You can increase the clarity of the sound within the frequency bandwidth.



is a trademark of SRS Labs, Inc.

WOW technology is incorporated under license from SRS Labs, Inc.

2. Display Setting

LCD On time

Time setting of the background brightness

- ◀▶ Set the time (3 ~ 180sec)
- + Select ON/OFF
- ▶ Save the setting



LCD Contrast

Setting the display

- ◀▶ Set the brightness
- ▶ Save the setting



Scroll Speed

Setting the running time of a

- ◀▶ Set the speed
- ▶ Save the setting



Tag Information

Setting the file information. File name or tag.

- + Select ON/OFF
- ▶ Save the setting



TIP

ON: Music file with tag information is displayed
OFF: File name only.
Only file name is displayed if no tag is attached.

Screen Saver

Setting screen saver and its waiting time to start

- ◀▶ Set the time (10 ~ 180sec)
- + Select ON/OFF
- ▶ Save the setting



Frame Rate

Setting the time interval between frames

- ◀▶ Set the time
- ▶ Save the setting



TIP

This setting changes the time interval while the screen saver is on.

Lyric ON/OFF

Setting the display on music files including lyrics

- + Select ON/OFF
- ▶ Save the setting



3. Record

FM Quality

Setting the sound quality of FM recor

- ◀▶ Set the sound quality
- ▶ Save the setting



Line Quality

Setting the sound quality of line-in encoding

- ◀▶ Set the sound quality
- ▶ Save the setting



Line Volume

Setting the volume level of line-in encoding

- ◀▶ Set the volume level
- ▶ Save the setting



4. Play

Boundary

Setting the Play Mode

+ - Select the mode
▶ Save the setting

- ☐ Folder
- ☐ ALL
- ☐ Playlist
- ☐ Bookmark

Repeat ON/OFF

Setting the repetition

+ - Select ON/OFF
▶ Save the setting

- ☐ OFF
- ☐ ON

Shuffle ON/OFF

Setting the random play

+ - Select ON/OFF
▶ Save the setting

- ☐ OFF
- ☐ ON

Intro Time Set

Setting the intro time

◀ ▶ Set the time (5 ~ 60sec)
- Select ON/OFF
▶ Save the setting

5 33 60

☐ ON

Tempo

Setting the play speed

◀ ▶ Set the speed (Default: 100)
▶ Save the setting

50 100 150

Resume ON/OFF

Setting the position to resume playing

+ - Select ON/OFF
▶ Save the setting

- ☐ OFF
- ☐ ON

TIP

ON: Resume playing from the same position on the file where the device stopped playing or was turned off.
OFF: Start playing from the beginning of the file after the device stopped playing or was turned off.

Fade In ON/OFF

Setting the volume level at the beginning.

+ - Select ON/OFF
▶ Save the setting

- ☐ OFF
- ☐ ON

TIP

ON: Recommended to gradually increase the volume level for the safety of audition.

Study Key Step

Setting the interval for search

◀ ▶ Set the time (0 ~ 300)
- Select ON/OFF
▶ Save the setting

0 150 300

☐ Study ON

TIP

1. Clicking while playing allows you to skip the set intervals.
2. This setting is useful for language learning.

5. Timer

Auto Power

Setting the timer for power off when there is no operation.

- Set the time (1 ~ 60sec)
- Select ON/OFF
- Save the setting



TIP Press to restart.

Sleep

Setting the timer for automatic power off after certain time period.

- Set the time (1 ~ 180min)
- Select ON/OFF
- Save the setting



TIP Select OFF to disable the setting.

6. System

Scan Speed

Setting the search speed (handy for language learning).

- Set the speed
- Save the setting



TIP Press for searching at high speed.

Language

Select the preferred language.

- Select the language
- Save the setting



Format

Format the memory.

- Select Normal/Quick
- Save the setting



TIP Quick formatting deletes the entire files and creates a new folder. Please be cautious of formatting.

Auto Hold

Automatically putting the device on hold after certain set time.

- Set the time
- Select ON/OFF
- Save the setting

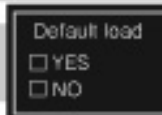


TIP Push the hold switch forward and pull it backward again to disable Auto Hold.

Default Load

Initializing all the functions on the menu as default setting.

- Select ON/OFF
- Save the setting



Memory Status

Displaying memory capacity.



F/W Version

Displaying the F/W version.



7. Firmware Upgrade (Downloading and upgrading new F/W).

Step 1: Download and save a new version of F/W from the web site (www.smtronics.co.kr) onto your PC.

Step 2: Connect the USB cable to the device.



Step 3: Copy and paste the new version of F/W to the device. (refer to the methods of copying and pasting for detail)

Step 4: Reboot the device for automatic upgrade (power ON/OFF).

MEMO



A/S and Troubleshooting

1. To be checked before request for A/S.

(If failure is suspected please read the check list)

Nothing is displayed on the LCD display.

- * Isn't the battery capacity level too low? If so, recharge the battery.
- * Isn't the LCD's contrast level too low? If so, please raise the contrast level.

Recording is not working.

- * Isn't the device on hold? If so, please disable the hold switch.
- * Isn't the memory already full? If so, please check the memory capacity and delete some unnecessary files.

Playing is not working.

- * Isn't the device on hold? If so, please disable the hold switch.
- * Isn't the battery capacity level too low? If so, please check the battery capacity level and recharge the battery.
- * Isn't the volume level too low? If so, please raise the volume.
- * Is there any music file stored on your device?

The device can not download files from PC.

- * Hasn't the USB cable got accidentally disconnected while transferring files into the device? If so, please make sure the cable is well connected to your PC or device.

Characters on display are broken.

- * Please make sure your selection of language is correct for your language.

The device seems to be playing at low/high speed.

- * Please make sure the speed setting of Speed Mode is correct.

The stored data can not be executed or deleted.

- * Please format the memory and try again.

The device can not be turned on.

- * Is the battery capacity level enough? If so, please recharge the battery.
- * Isn't the device on hold? If so, please deactivate the hold switch not to be on hold.

I hear no sound but noise.

- * Isn't the volume level 0?
- * Is the earphone disconnected from the jack? Is there any dirt in the earphone jack?
(Any dirt in the earphone jack can cause noise.)
- * Please make sure there is no damage to the music file. Damaged MP3 or WMA files can produce noise. Please try other files.

Nothing is displayed on the screen.

- * Please check LCD On Time in the Display Mode.
- * Please check the battery capacity level.

I hear no sound even though the play button is already pressed.

- * Check the connection between the earphone set and the device. (Otherwise try other earphone set)
- * Please check whether the device is on hold.
- * Check the level of volume. (Try setting EQ)

I can not copy files into the device.

- * Check the battery capacity level.
- * Try initialization of the device.
- * Make sure the driver for Windows 98 is installed.

The display is too dark.

- * Please check the LCD contrast.

I experienced sudden power off.

- * Please check Auto Power/Sleep in the Timer Mode.