



# iCalc™

Bluetooth® Calculator Keypad



VP6274

# System Requirements

## Hardware:

- Bluetooth-enabled computer (with either built-in Bluetooth wireless capability or external Bluetooth dongle)
- Optional for the iCalc attachment: Apple® Wireless Keyboard, the Bluetooth model

## Package Contents:

- iCalc™ Bluetooth Calculator Keypad
- Magnetic Alignment Wedge
- 2 x AAA Batteries
- Quick Reference Guide

## Operating System:

- Mac® OS X v10.4.6 or later
- Windows® 2000, XP®, Vista®, 7 or 8

©2013 SMK-Link Electronics Inc. SMK-Link, the SMK-Link logo, and iCalc are trademarks of SMK-Link Electronics, Inc. Bluetooth® is a registered trademark of Bluetooth SIG, Inc. Apple, MacBook, and iMac are registered trademarks of Apple Inc. Windows is a registered trademark of Microsoft Corporation in the United States and other countries. All other trademarks are properties of their respective owners. iCalc Bluetooth Calculator Keypad not manufactured in coordination with Apple Inc.

Made in China.

## Canada, Industry Canada (IC) Notices

This Class B digital apparatus complies with Canadian ICES-003 and RSS-210. Operation is subject to the following two conditions: (1) this device may not cause interference, and (2) this device must accept any interference, including interference that may cause undesired operation of the device.

## Thank You

Congratulations on your purchase of the iCalc Bluetooth Calculator Keypad. We thank you for choosing SMK-Link Electronics to meet your wireless needs and look forward to serving you in the future. To learn about new SMK-Link products as they become available, and to ensure the best possible customer support, please register your product online at [www.smklink.com/register](http://www.smklink.com/register).

## Support

SMK-Link Electronics Corporation

3601-B Calle Tecate

Camarillo, CA 93012

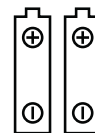
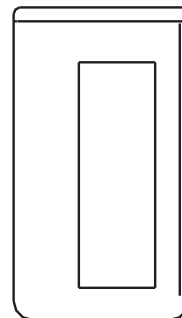
TEL: (888) 696-3500

FAX: (805) 987-6665

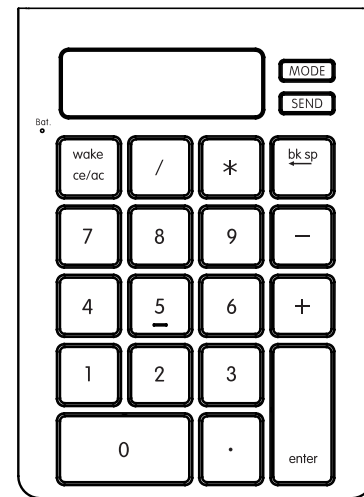
Email: [pcsupport@smkusa.com](mailto:pcsupport@smkusa.com)

[www.smklink.com](http://www.smklink.com)

## Magnetic Alignment Wedge



**2x AAA  
Batteries  
(supplied)**



**iCalc™ Bluetooth  
Calculator Keypad**

## Step 1

### Install Batteries (Supplied)

- Remove the battery cover from the bottom of the iCalc.
- Insert the 2 AAA batteries (supplied) into the battery slots. Make sure the positive (+) and negative (-) ends of the batteries match the polarity markings inside the battery compartment.
- Snap the battery cover back into position.
- Turn on the power by sliding the ON/OFF switch located at the bottom of the iCalc to the ON position.

## Declaration of Conformity

Manufacturer:

SMK-Link Electronics Corporation

3601-B Calle Tecate

Camarillo, CA 93012

Hereby, SMK-Link declares that the VP4585 is in compliance with the essential requirements and other relevant provisions of Directive 1999/5/EC.

EMC/EMI/Safety Standards

EN 300 440-2 V1.1.1 (2001-09)

EN 301 489-1 V1.4.1 (2002-08)

EN 301 489-3 V1.4.1 (2002-08)

EN 60825-1 (1994, A11:1996, A2:2001)

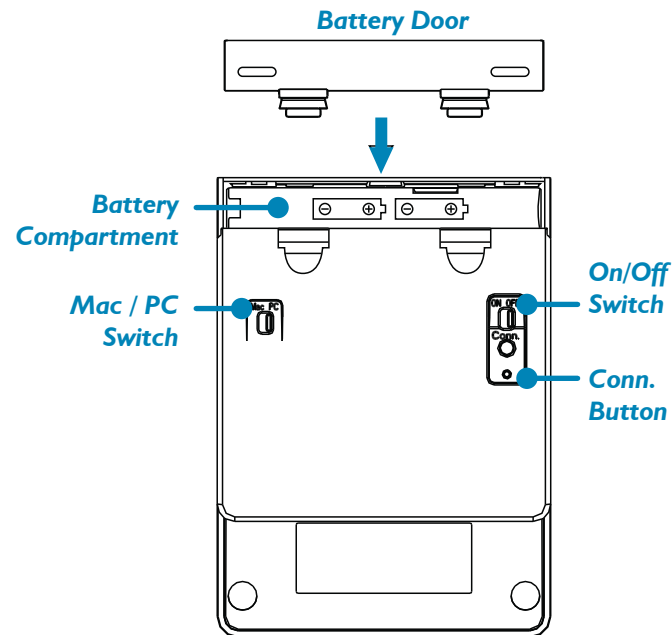
harmful interference to radio communications. However, there is no guarantee that this radio interference will not occur in a particular installation. If this equipment does cause harmful interference to radio or television reception, which can be determined by turning the equipment on and off, the user is encouraged to try to correct the interference by one or more of the following measures:

- Re-orient or relocate the receiving antenna.
- Increase the separation between the equipment and the receiver.
- Connect the equipment into an outlet on a circuit different from that to which the receiver is connected.
- Consult the dealer or an experienced Radio-TV technician for help.

**Notice:** Any changes or modifications not expressly approved by the party responsible for compliance could void the user's authority to operate the equipment. Extension cables are not recommended, if used, they must be shielded in order to comply with the emission limits. This device and its antenna(s) must not be co-located or operating in conjunction with any other antenna or transmitter.

## IC Certification

The term "IC" before the certification/registration number only signifies that the Industry Canada technical specifications were met.



## Step 2

### (Optional - For Magnetically Aligning the iCalc to the Apple Wireless Keyboard)

#### Attach the Bridge

This step is optional if you are using the Apple Wireless Keyboard and wish to magnetically align the iCalc to the keyboard. The iCalc Bluetooth Calculator Keypad works with, or without, the Apple Wireless Keyboard.

- Turn the Apple Wireless Keyboard upside down.
- Remove the sticker from the back of the wedge.
- Position the wedge to the left-hand corner of the

keyboard so that the edge of the wedge aligns with the side of the keyboard.

- Affix the wedge to the Apple Wireless Keyboard and press firmly.

**Note: It's not recommended to remove and reattach the wedge to the keyboard once this step is completed.**

- Place the iCalc to the right side of the keyboard. The iCalc should attach to the keyboard via the built-in magnets when placed near the keyboard.

The warranty does not affect your statutory rights and you may have other rights which vary from state to state and country to country. This warranty is understood to be the complete and exclusive agreement between the parties, superseding all prior agreements, oral or written, and all other communications between the parties relating to the matter of this warranty.

The above warranty does not apply to Products sold in Australia. Products sold in Australia by an authorized reseller will contain an Australia specific warranty statement.

### Regulatory Compliance

#### FCC Certification

This device complies with Part 15 of the FCC Rules. Operation is subject to the following two conditions: (1) This device may not cause harmful interference, and (2) This device must accept any interference received, including interference that may cause undesired operation.

This equipment has been tested and found to comply with the limits for a CLASS B digital device, pursuant to Part 15 of the FCC rules. These limits are designed to provide reasonable protection against harmful interference when the equipment is operated in a residential installation. This equipment generates, uses, and can radiate radio frequency energy. If not installed correctly and used in accordance with the instruction guide, it may cause

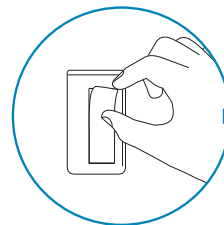
## Warranty

SMK-Link Electronics Corporation (SMK-Link) warrants to the original end-user purchaser of the Product (“you”) that the Product, excluding batteries, will be free from defects in materials and workmanship under normal use and service for one-year from date of purchase. If the Product becomes defective in materials or workmanship during the warranty period, SMK-Link will, at its option, either repair or replace it. The replacement unit may be a more current or upgraded model if the originally purchased model is not available. Any Product repaired or replaced under the terms of the warranty is covered for the remainder of the original warranty period or ninety (90) days from the date of return shipment, whichever is longer. This warranty does not cover Products which have been subjected to misuse, accident, physical damage, improper installation, abnormal operation or handling, neglect, inundation or fire or when Product regulatory label has been removed, altered or rendered illegible; nor does it cover accessory or consumable items.

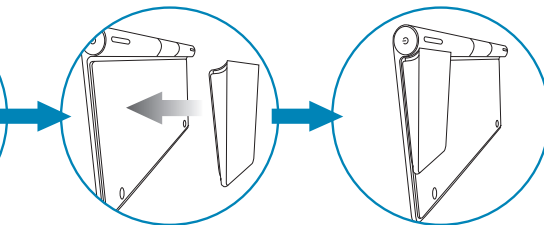
SMK-Link shall not be liable for any indirect special, incidental, or consequential damages. SMK-Link’s total liability for damages for any cause related to, or arising out of, the use or inability to use the Product shall not exceed the original price paid for the Product even if SMK-Link has been informed of such possibility.

If your Product requires service under warranty, you must first contact SMK-Link product support to receive an RMA number. Shipping of defective units back to SMK-Link is at your expense. The contact information can be found on the SMK-Link website: [www.smklink.com](http://www.smklink.com).

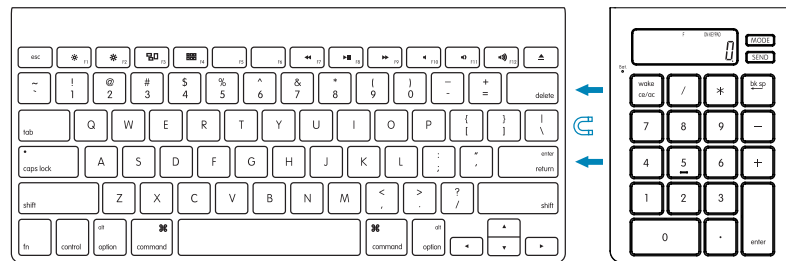
### Remove the Sticker



### Affix the wedge to the keyboard (Edge of the wedge aligns with the side of the keyboard)



### Place the iCalc to the right of the keyboard



## Step 3

### Connect the iCalc to Your Bluetooth Computer

- Make sure the power is on and the OS Selector at the bottom of the keypad is switched to the correct OS. The LCD display should say “On Keypad” and a “0” is displayed.
- Before you can use Bluetooth devices for the first time, you must connect your devices through a standard discovery and pairing process.
- The iCalc Bluetooth Calculator Keypad is designed to work with Bluetooth-enabled systems. Please review the documentation that comes with your computer system for any specifics regarding your Bluetooth system and/or consult with your system vendor if you cannot find the Bluetooth connectivity in your system.

***Important: During the process of connecting your iCalc to your Bluetooth system, you must set the iCalc Calculator Keypad to Keypad Mode by tapping on the Mode key until the word “Keypad” appears on the LCD display.***

- Your iCalc Bluetooth Calculator Keypad is designed with a power-saving feature which goes into sleep mode with the LCD display shutting off after approximately 30 minutes of inactivity. To wake up the keypad from sleep mode, press the “WAKE” key. Note: You don’t need to reconnect the Bluetooth keypad to your computer after waking up the keypad as the keypad stays connected to the computer during sleep mode.

***Important: In some Mac systems the sleep mode triggers a “Connection Loss” warning message. Please ignore the message and tap on the “WAKE” key to resume. This warning message is a standard feature of some Mac OS and it doesn’t impact your Bluetooth keypad connection.***



## Step 4

### Using the iCalc Bluetooth Calculator Keypad

Function Keys	
MODE	Switch between Keypad (communicating with your computer) and Calculator (offline) modes.
SEND	Send the calculation result displayed on the keypad LCD to the computer when the device is in Calculator Mode.
WAKE	Press once to wake the keypad from sleep mode.

Operation Status	
KEYPAD	Allows for Bluetooth pairing and key entry on your computer files.
CALC	Allows simple arithmetic operations such as “+”, “-”, “x”, “/”, “grand total” and “ce/ac.”
CALC GT	Allows for cumulative arithmetic operations.

**Note:** The iCalc defaults to Keypad Mode when you turn the power on. If it was switched to Calculator Mode, you must press the Mode key to switch it to Keypad Mode before connecting to your Bluetooth computer.

### Device Pairing on MAC

- Click on the Apple icon and select “System Preferences.”
- Click on the Bluetooth icon.
- Click on “Set Up New Device....”
- Click on “Continue”
- Press the Connect button “Conn” at the bottom of the iCalc, the Pairing indicator LED light will flash green indicating it’s ready to be discovered.
- Select “Keyboard” and click on “Continue.”
- Select “Bluetooth Calculator Keypad” and click on “Continue.”

- On your iCalc Bluetooth Calculator Keypad, type the passkey (numbers) provided on your computer screen, followed by “enter” key on the keypad. Please note that the numbers will not be displayed on the keypad’s LCD screen as you type them in. At this point, the pairing process is complete. Click on “Continue.”
- On the conclusion screen, click on “Quit.”  
The keypad is ready to use.

## Device Pairing on Windows

- Make sure the power is on and the OS Selector at the bottom of the keypad is switched to PC. The LCD display should say “On Keypad” and a “0” should be displayed.
- Press the “Conn” button on the back of the keypad.  
The battery indicator LED will begin flashing green.

- Click on the Bluetooth icon on your computer screen, or access the Control Panel of your computer and select “Devices and Printers”. Click on “Add a Device”. The computer will display Bluetooth devices within range.
- Select the iCalc Bluetooth Calculator Keypad and click on “Next.”
- On your iCalc Bluetooth Calculator Keypad, type the passkey (numbers) provided on your computer screen, followed by “enter” key on the keypad. Please note that the numbers will not be displayed on the keypad’s LCD screen as you type them in. At this point, the pairing process is complete. Click on “Next.”
- When the connection / pairing is successfully completed, your computer screen displays the following message.  
Click on “Close” to finish and exit this process.