

ExpressCard Media Remote for Bluetooth



INTERLINK
ELECTRONICS



Introduction

Overview

Congratulations on your purchase of Interlink Electronics' ExpressCard Media Remote for Bluetooth. This innovative remote control for Bluetooth equipped laptops features a rechargeable battery and 30 foot range. It stores and charges in the ExpressCard slot in your notebook.

So relax and enjoy the rich multimedia functions in your Bluetooth equipped laptop with this full featured media remote control. Play music, watch DVDs, or flip through photos without leaving the couch. It even controls Power Point from up to 30 feet away. Best of all, storing the remote in the ExpressCard slot means it's always right where you need it next: at home, in the office or on the road.

Agency Certifications

This device complies with Part 15 of the FCC Rules.

Operation is subject to the following two conditions: (1) This device may not cause harmful interference, and (2) This device must accept any interference received, including interference that may cause undesired operation.

This equipment has been tested and found to comply with the limits for a class B digital device, pursuant to part 15 of the FCC Rules. These limits are designed to provide reasonable protection against harmful interference in a residential installation. This equipment generates, uses and can radiate radio frequency energy and if not installed and used in accordance with the instructions, may cause harmful interference to radio communications. However, there is no guarantee that interference will not occur in a particular installation. If this equipment does cause harmful interference to radio or television reception, which can be determined by turning the equipment off and on, the user is encouraged to try to correct the interference by one or more of the following measures:

- * Reorient or relocate the receiving antenna.
- * Increase the separation between the equipment and receiver.
- * Connect the equipment into an outlet on a circuit different from that to which the receiver is connected.
- * Consult the dealer or an experienced radio/TV technician for help.

This equipment has been verified to comply with the limits for a class B computing device, pursuant to FCC Rules. Operation with non-approved equipment is likely to result in interference to radio and TV reception. The user is cautioned that changes and modifications made to the equipment without the approval of manufacturer could void the user's authority to operate this equipment.

Europe - CE ETSI EN 300 328

Electromagnetic compatibility and Radio spectrum Matters (ERM); Wideband transmission systems; Data transmission equipment operating in the 2,4 GHz ISM band and using wide band modulation techniques; Harmonized EN covering essential requirements under article 3.2 of the R&TTE Directive 2,45 GHz Radio LAN

Europe - CE ETSI EN 301 489-1

Electromagnetic compatibility and Radio spectrum Matters (ERM); Electromagnetic compatibility (EMC) standard for radio equipment and services; Part 1: Common technical requirements.

Europe - CE ETSI EN 301 489-17

Electromagnetic compatibility and Radio spectrum Matters (ERM); Part 17: Specific conditions for 2,4 GHz wideband transmission systems and 5 GHz high performance RLAN equipment

USA - FCC CFR 47 Part 15, Subpart C

“Intentional Radiators.” Title 47 of the Code of Federal Regulations, Part 15, FCC Rules, Radio Frequency Devices, Subpart C.

Canada – IC RSS-210

Low-power License-exempt Radio communication Devices

European RoHS DIR 2002/95/EC

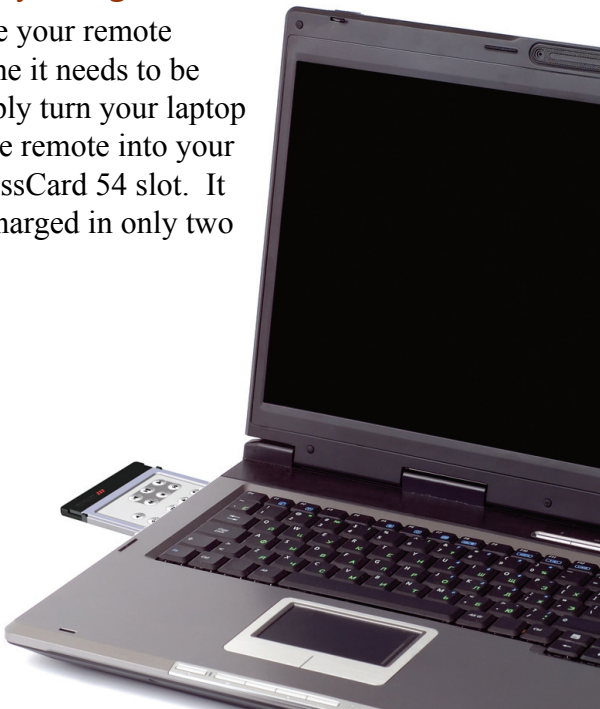
IC Certification

Operation is subject to the following two conditions: (1) this device may not cause interference, and (2) this device must accept any interference, including interference that may cause undesired operation of the device.

Installation

Charge Before you Begin

Before you use your remote for the first time it needs to be charged. Simply turn your laptop on and plug the remote into your laptop's ExpressCard 54 slot. It will be fully charged in only two hours.





Built-in Bluetooth Vs. USB Adapter

If your notebook has integrated Bluetooth, no additional adapter is needed. Otherwise, you will need a USB Bluetooth Adapter. To install a USB Bluetooth Adapter plug it into a free USB port on your notebook and wait for Windows to install all of the required drivers.

Adding the Bluetooth Device

To add the device as a recognized device you will need to open the Bluetooth Devices list.

Step 1: Put the remote into discover mode


To put the remote into Discover Mode you need to press and hold both the volume up  and volume down  buttons simultaneously for three seconds.

Step 2: Double Click the Bluetooth Icon in the System Tray

Double-click the Bluetooth Icon  on the system tray to open the Bluetooth devices list.

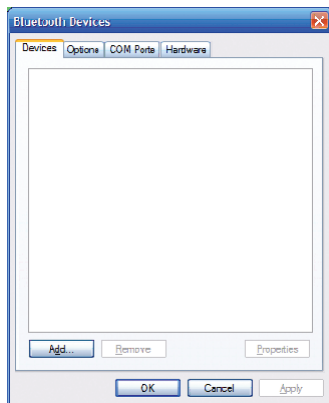
If the icon is not on the system



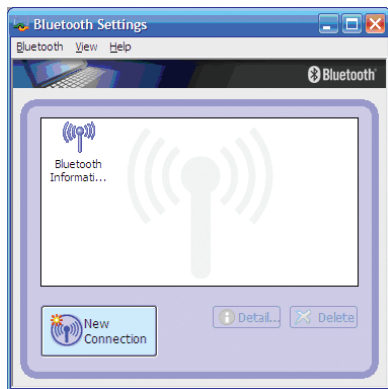
tray, click *Start* | *Control panel* and select double-click the Bluetooth Icon . If the Bluetooth Icon is not listed, please ensure you have a working integrated Bluetooth or a USB Bluetooth Adapter.

Step 3: Add the Remote

Click on **Add** or **New Connection** to add the remote to the Bluetooth device list. This will bring up the Add new connection wizard.



Or



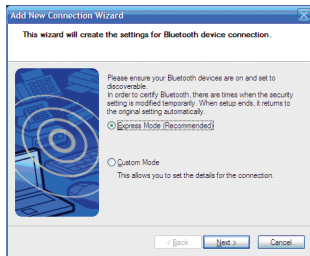
NOTE: The dialog boxes may be slightly different based on what brand of laptop and Bluetooth adapter you are using.

Step 4: Add New Connection Wizard

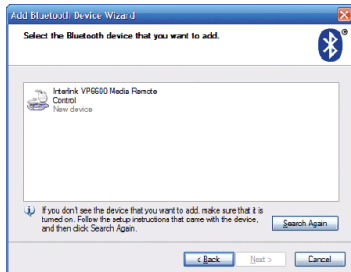
Depending on your particular Bluetooth driver you will either click “My device is set up and ready to be found” and click the **Next** button or you will just click **Next**.



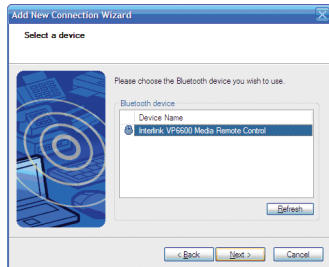
Or



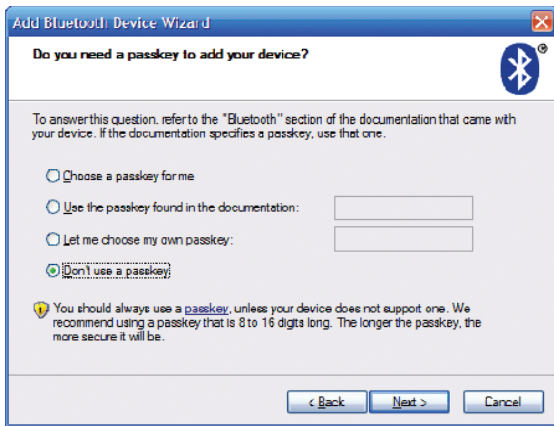
The remote should be listed. If it is not, please go back to step 1. Once you find the remote, select the remote from the list and click **Next**.



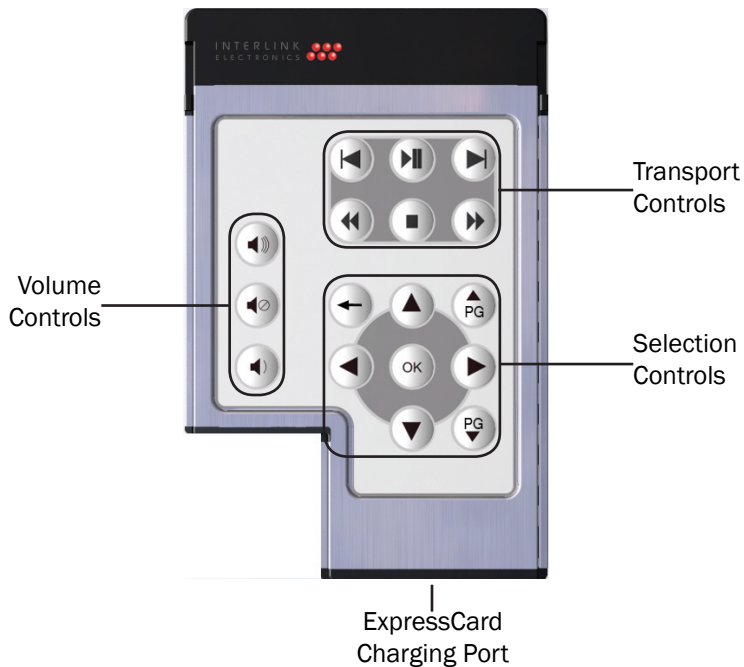
Or



If the Bluetooth Device Wizard asks you about a passkey select, “Don’t use a passkey” and click **Next**. After the wizard is complete your remote is ready.



Familiarizing Yourself with the Controls



Volume Control

Change the system volume.



Volume Up



Mute



Volume Down

Transport Controls

Change location in songs, play lists and videos.



Play/Pause



Stop



Previous Track / Chapter



Next Track / Chapter



Rewind



Fast Forward

Selection Controls

These keys are used to select items from a list, control the position of the cursor, change slides or navigate menus.



Up



Down



Left



Right



Page Up



Page Down



Okay / Select / Return



Back

Maximizing Battery Life

Your remote uses a rechargeable battery. It charges in the ExpressCard slot in your notebook. The battery can last up to a week without recharging. Just use the remote when you want to play music and DVD's on your computer and store it in your notebook and it will always be charged when you need it. If its been a really long time since you've used your notebook or the remote, don't worry, it takes less than 2 hours to fully charge.

Power Saving

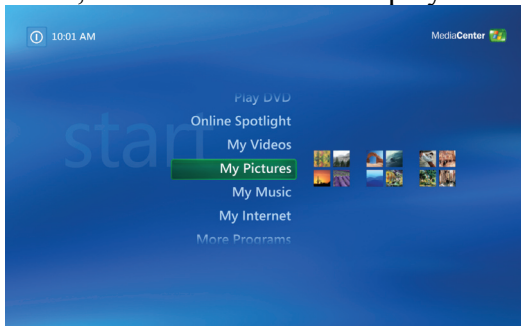
One great feature of your remote is the automatic power saving mode. If you don't press any buttons on your remote for 30 minutes, it will automatically go to sleep to conserve battery power. It wakes up with the first button press and automatically reestablishes communication. It may take a second or two before it is reconnected. You can avoid going into power saving mode by pressing a button every 30 minutes.







Using the Remote in Common Programs

Microsoft Media Center Edition 2005



Start Media Center by double clicking on its icon. Play video, watch slide shows and play music with your remote.

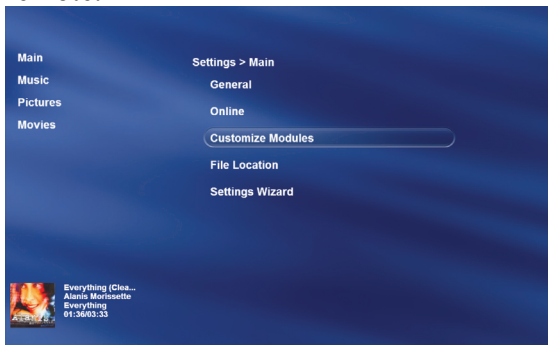








Use the arrow keys     to move around menus. Press Ok  to select items. Press Back  to move back a menu.

Media Experience by Dell



Start Media Experience by double clicking on its icon. Play Video, Watch Slide shows and Play Music with your remote.





Use the arrow keys     to move around menus. Press Ok  to select items. Press Back  to move back a menu.

iTunes







Start iTunes by double clicking on its icon. Two great ways to use the remote with iTunes are:

Party Shuffle:

Click on the party shuffle icon to start playing music at random. Use next track  and previous track  to navigate through your songs.

Use your own play list:

You can also use your own playlists to load in sequences of songs which you can then navigate using next track  and previous track .

Use the volume controls to crank the music up  or to mute  when the phone rings.

Power Point

Start Power Point and load your presentation as you normally would. Once the presentation is loaded, start the presentation. When the presentation is running you can easily navigate through your slides with the keys below.










Previous Slide



Next Slide

DVD Players

Most DVD playing software can be controlled using the remote. Use the arrow keys     on the DVD menu and Ok  to select. The Skip buttons  and  to skip chapters on the DVD. Remember, the occasional button press will prevent the remote from going into power saving mode.

Media Players

This remote uses standard media commands. It works with a wide variety of Windows programs that play Music and Video including Media Player, Real Player and WinAmp.

Though not all keys will work in all programs. Some programs, for example, support previous track but don't support rewind. Have fun experimenting with your new remote to see what programs you can control.

Troubleshooting

Before you begin you should already have Bluetooth working on your laptop. If Bluetooth is not working or you are unsure, please contact the manufacturer of your laptop or Bluetooth adapter.

Problem: Every button on the remote doesn't work in every program.

Solution: This is normal. Your remote control sends standard windows commands for all of its buttons. Some programs do not offer every command. For example, a program might support next track / previous track but not support rewind or fast forward.

Problem: After I haven't pressed any buttons on the remote for a while, when I do press a button, nothing happens.

Solution: The remote uses a rechargeable battery. What's happening is to give you the longest battery life possible the remote goes to sleep. It wakes up with the first button press, but it may be a couple of seconds before it reestablishes communication with your laptop. Once it has reconnected, you will need to press the button again. You can keep this from happening by pressing a button every 30 minutes.

Problem: The remote isn't working.

Solution 1: Check the Bluetooth device list to see if the device is listed. If it is listed, delete it and reinstall. If it is not listed, it will need to be installed.

Solution 2: Charge the remote. Generally just using the notebook occasionally will be more than enough power to charge the remote.

Product Specifications

Bluetooth:	Version 1.2
Battery Type:	Rechargeable Li-Ion Polymer
Battery Usage:	Up to 7 days
Recharge Time:	Approx. 2 hours
Frequency:	2.4 GHz Bluetooth Adaptive Frequency Hopping
Range:	Up to 30 feet
Operating Systems:	Windows XP (Professional, Home Media Center) Edition
Size:	54 mm (W) x 75 mm (L) x 5 mm (H)

Thank you!

Thank you for purchasing ExpressCard Media Remote for Bluetooth. We know you had other choices and we appreciate that you chose Interlink Electronics for your media remote needs. So we may better serve you in the future, please take a few moments to register online at **www.interlinkelec.com/register**

Interlink Electronics

Product Support Contact

546 Flynn Road Camarillo, CA 93012 USA
TEL 888 696 3500 FAX 805 484 5997
INTERLINKELECTRONICS.COM