



NA135

AV Receiver

User Manual



Enjoy the Lifestyle of In-Car Entertainment

FCC ID :2AB7S-NA135

FCC Compliance Statement:

This device complies with Part 15 of the FCC rules. Operation is subjected to the following two conditions:

- (1) this device may not cause harmful interference, and
- (2) this device must accept any interference received, including interference that may cause undesired operation.

The manufacturer is not responsible for any radio or TV interference caused by unauthorized modifications or change to this equipment. Such modifications or change could void the user's authority to operate the equipment.

This equipment has been tested and found to comply with the limits for a Class B digital device, pursuant to part 15 of the FCC Rules. These limits are designed to provide reasonable protection against harmful interference in a residential installation. This equipment generates, uses and can radiate radio frequency energy and, if not installed and used in accordance with the instructions, may cause harmful interference to radio communications.

However, there is no guarantee that interference will not occur in a particular installation. If this equipment does cause harmful interference to radio or television reception, which can be determined by turning the equipment off and on, the user is encouraged to try to correct the interference by one or more of the following measures:

- Reorient or relocate the receiving antenna.
- Increase the separation between the equipment and receiver.
- Connect the equipment into an outlet on a circuit different from that to which the receiver is connected.
- Consult the dealer or an experienced radio/TV technician for help.

The device has been evaluated to meet general RF exposure requirement. To maintain compliance with FCC's RF exposure guidelines, this equipment should be installed and operated with a minimum distance of 20cm between the radiator and your body.

CONTENTS

Contents

Thank you for purchasing a Nakamichi products.

Please read all instructions carefully before operation, to ensure your complete understanding and to obtain the best possible performance from the unit.

INTRODUCTIONS

What's in the box	2
Installing the unit	3
Wiring diagram	4
Overview the unit	5
Select the playback source.....	6

AUDIO ADJUSTMENT

General Setting/Equalizer.....	7
--------------------------------	---

AV MEDIA

Listening to the radio.....	8
Playing of Music.....	9
Viewing the photo.....	10
Playing Video.....	11

BLUETOOTH

Using bluetooth.....	13
----------------------	----

USB 1A CHARGING

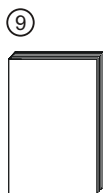
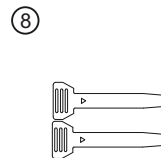
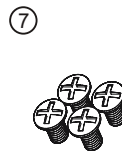
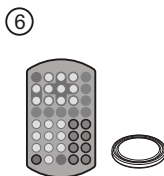
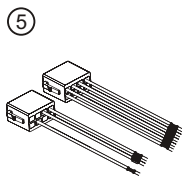
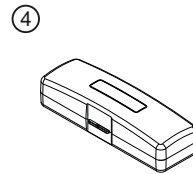
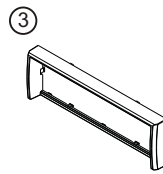
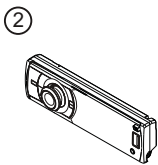
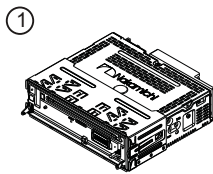
USB Smart Phone 1A charging.....	14
----------------------------------	----

REFERENCE

Specifications.....	15
---------------------	----

INTRODUCTIONS

What's in the box

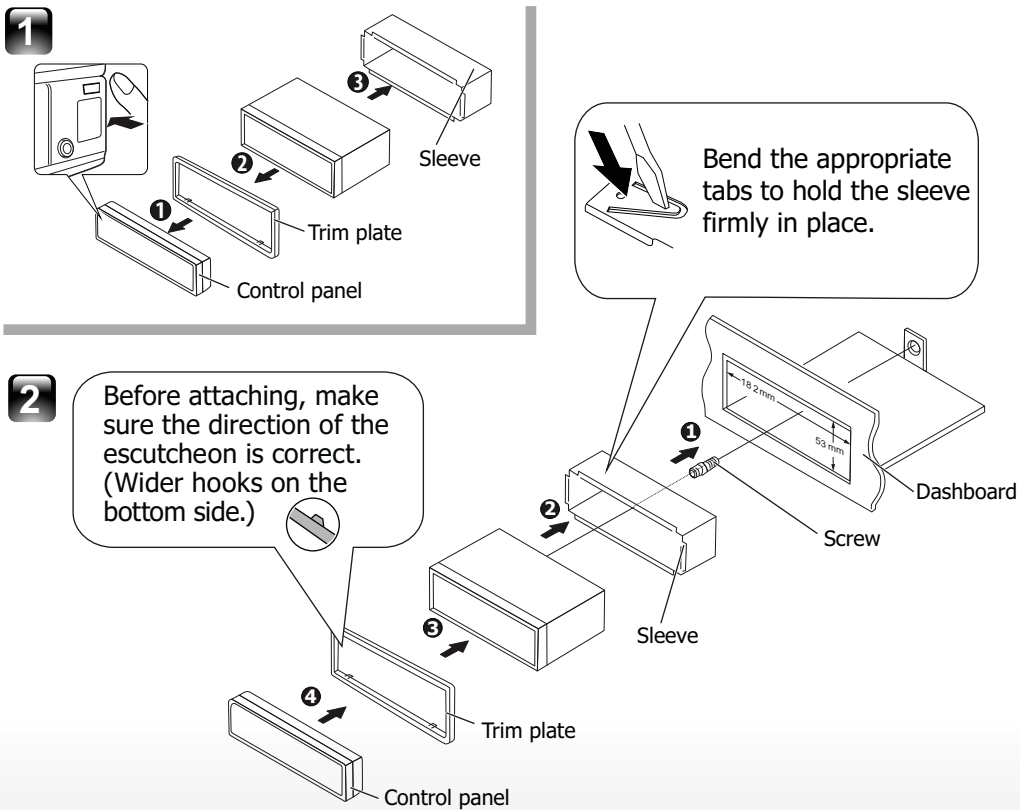


Check and identify the contents of the package:

- | | |
|---------------------------------|-----------------------------|
| 1 Main unit | 6 Remote control & battery |
| 2 Front panel | 7 Screw X 4pcs (M5 x 8mm) |
| 3 Trim plate | 8 Disassembly tools X 2 pcs |
| 4 Carrying case for front panel | 9 User manual |
| 5 ISO male connector X 2 | |

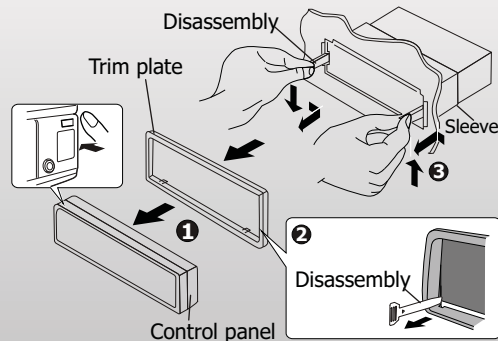
INTRODUCTIONS

Installing the unit



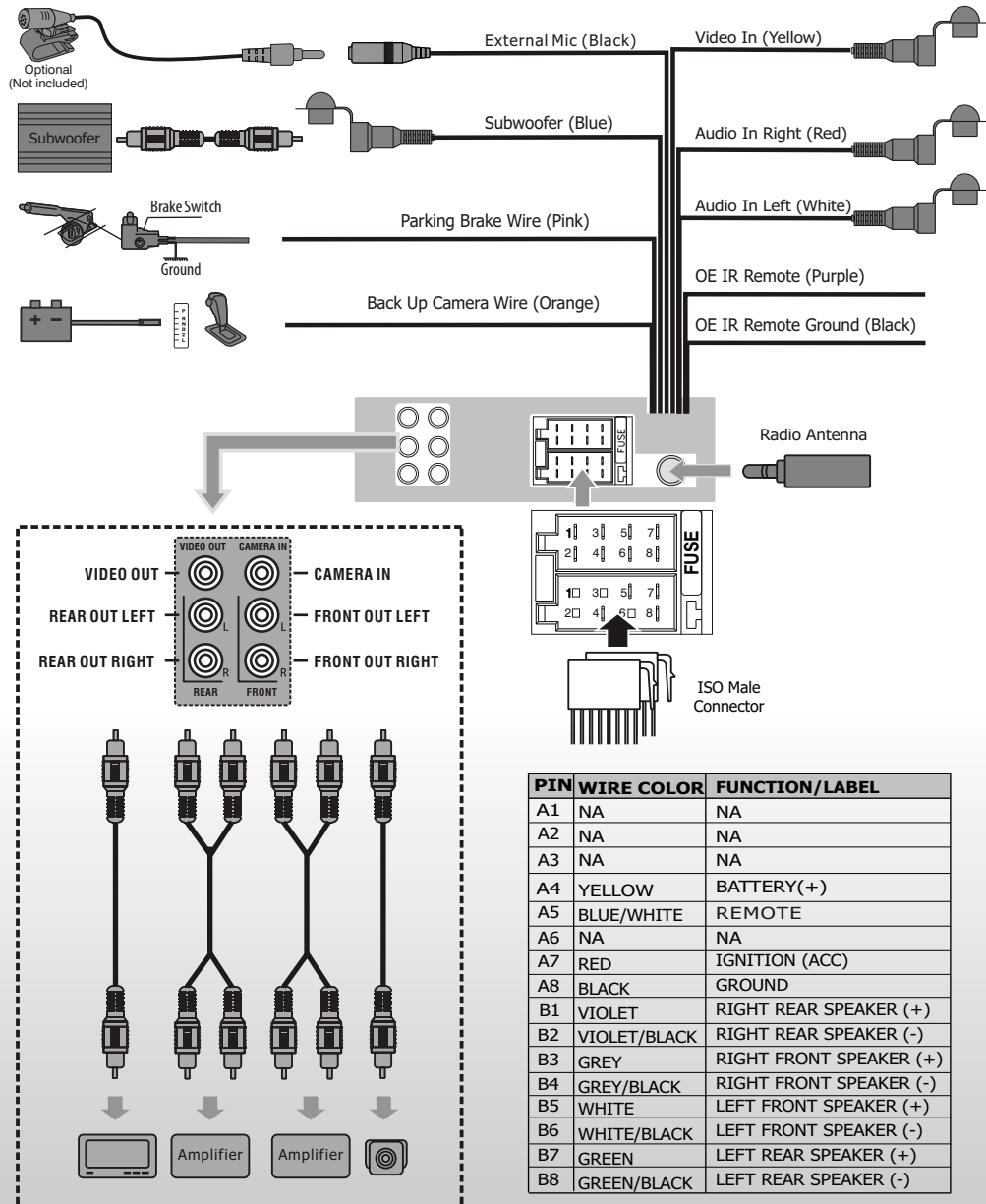
Removing the unit

- 1 Detach the control panel.
- 2 Engage the latch pin on the removal tools into the holes on both sides of the escutcheon, then pull it out.
- 3 Insert the disassembly tools deeply into the slots on each side, then follow the arrows instructions as shown on the right.



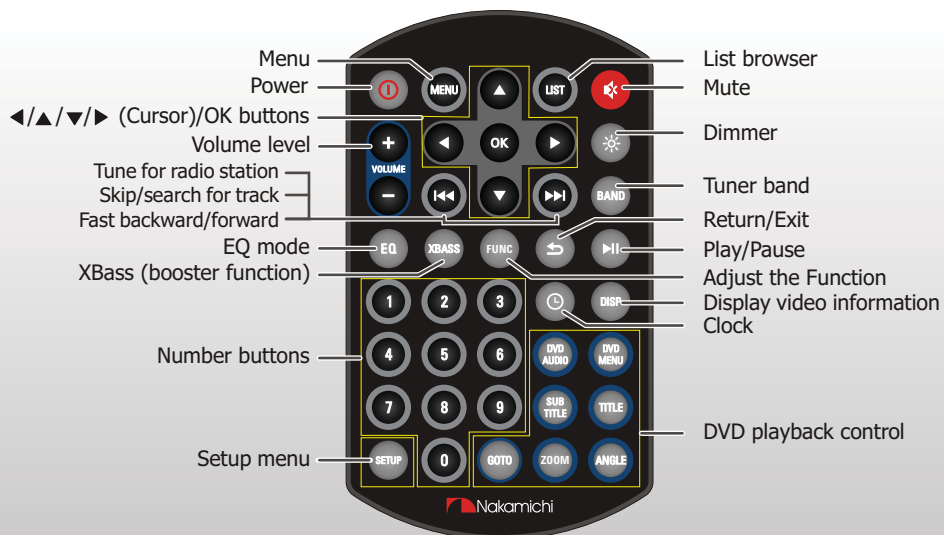
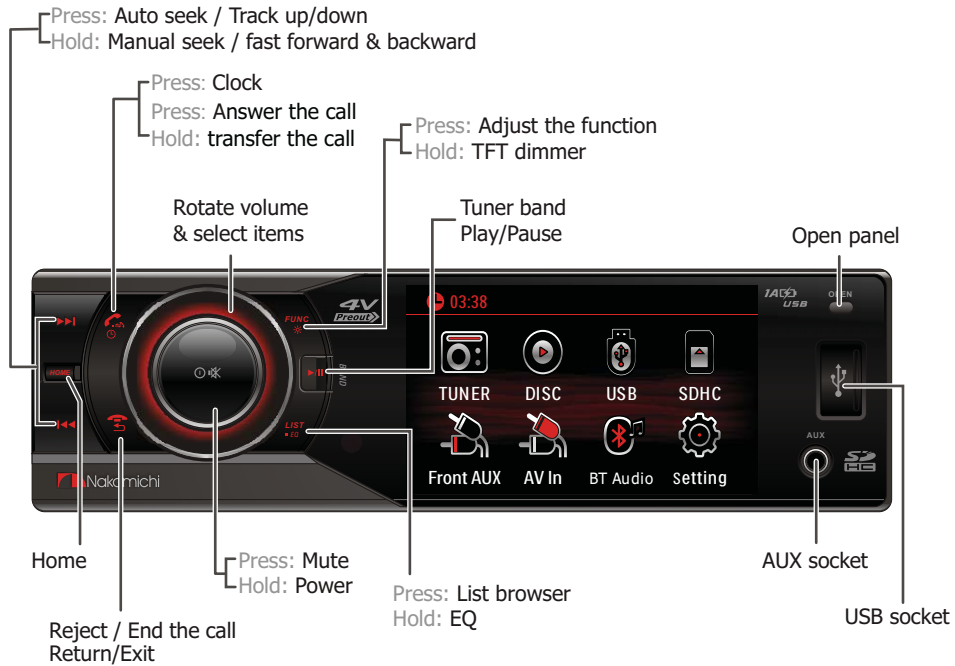
INTRODUCTIONS

Wiring diagram



INTRODUCTIONS

Overview the unit

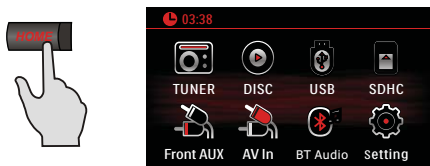


INTRODUCTIONS

Select the playback source

Select Home

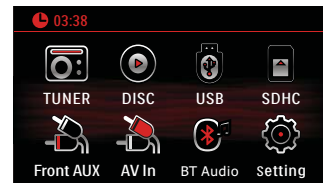
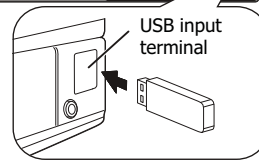
1. Access to Menu



2. Select source

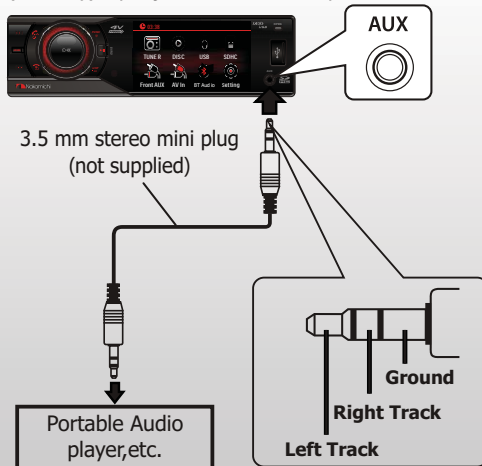


Play a USB device

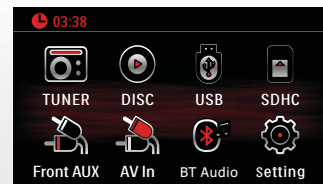
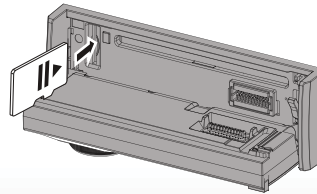


Connect an external component to the AUX input jack

You can connect an external component to the AUX (auxiliary) input panel.



Play a Micro SD device

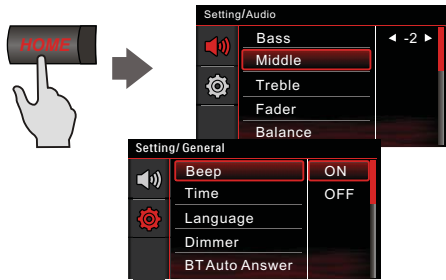


TUNER	Switch to the radio broadcast.
DISC	Play a disc.
USB	Play files on a USB device.
SDHC	Play files on a micro SD device.
Front AUX	Switch to an external component connected to AUX input terminal on the monitor panel.
BT Audio	Play files from your mobile phone
AV In	Switch the source to the audio and video input that is transferred from an external video player.
SETTING	Adjust the Head unit settings

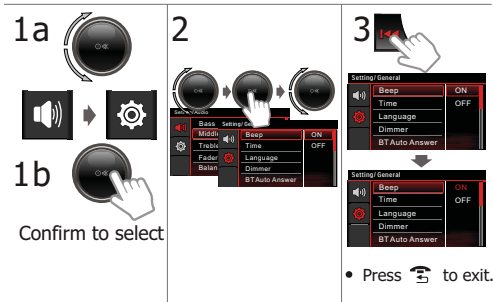
AUDIO ADJUSTMENT

General Setting/Equalizer

General Setting



General Settings	Selectable setting
Beep	Beep On / Off: Activates or deactivates the keypress tone
Time	12 Hour: Select 12 hour time format 24 Hour: Select 24 hour time format Adjust: Set time
Language	Select the system language
Dimmer	Select dimmer high or low
BT Auto Answer	Select the BT Auto answer On or Off
BT Info	Check the bluetooth information



Preset EQ

You can select a preset EQ from 8 music types. When you select a preset EQ, the EQ icon will light up.

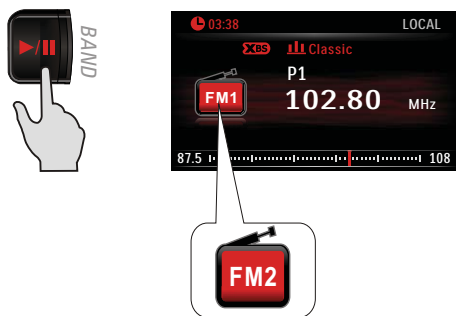


Audio Settings	Selectable setting
Bass	Adjust the bass range:-15 to +15
Middle	Adjust the middle range:-15 to +15
Treble	Adjust the treble range:-15 to +15
Fader	Adjust the front and rear speaker out put balance:F01 to R12
Balance	Adjust the left and right speaker out put balance: L01 to R12
XBASS	Select the XBASS On or Off
Subwoofer	Select the subwoofer On or Off

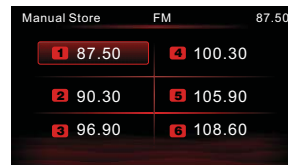
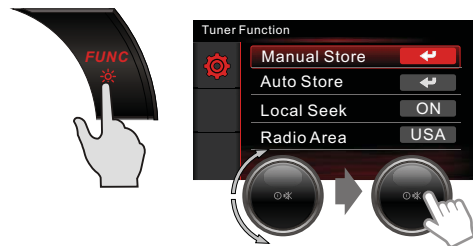
AV MEDIA

Listening to the radio

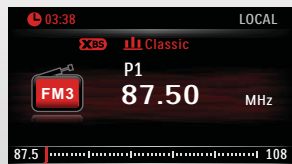
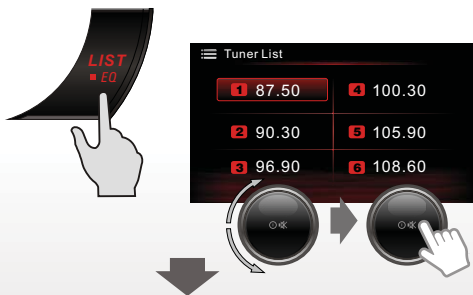
Select BAND



Radio function operation





Select preset memory station



TIPS

1. If no operation is done, for about 30 seconds, the operation will be cancelled.

2. Press  or  to exit.

AV MEDIA

Playing the music

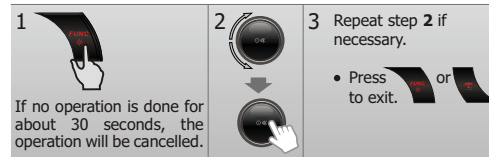
Music browser



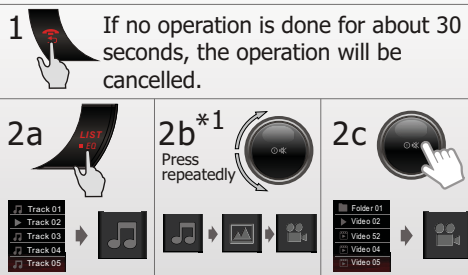
Music function operation



- TIPS**
1. Press to return to the previous folder or exit.
 2. Press to Quick return back now playing mode.



When in browser, you can switch between Music, photo and video select.



- 3 Repeat step 2 if necessary.
 - Press to exit.

•*1 if the device is not playing music, photo or video file, it can not be selected .

Function item	Selectable setting
Repeat	All Repeat all song tracks or song files
	One Repeat all current track
	Folder Repeat all song files of the current folder
Random	Off Cancel random plays
	ON Randomly plays all disc or current folder

- You cannot activate the repeat mode and the random mode at the same time.
- When in random off mode, you cannot activate repeat off mode.



AV MEDIA

Viewing the photo

Basic operations



- Photo is play as slide show automatically.

	Start playback /pause the slide show
	Press to next & previous photo

Function operation

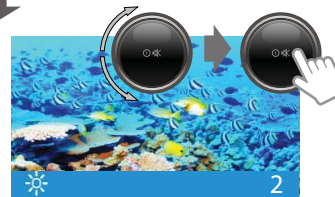
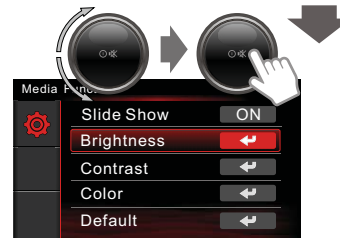






Photo file list browser



- To return to the previous folder or exit, press .

- TIPS**
1. If no operation is done, for about 30 seconds, the operation will be cancelled.
 2. Press  or  to exit.

 Function item	Selectable setting
Slide Show	Turn the Slide Show On or Off
Brightness	Adjust the brightness from 0 to 8
Contrast	Adjust the Contrast from 0 to 8
Color	Adjust the Color from 0 to 8
Default	Reset to the factory settings

AV MEDIA

Playing Video

Basic operations



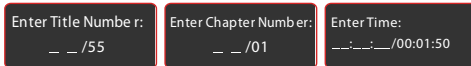
Title no./
Total title no.
Chapter no./
Total Chapter no.
Playback time

PARKING is not enabled.
No video while driving.

No playback picture is shown when the parking brake is not engaged.

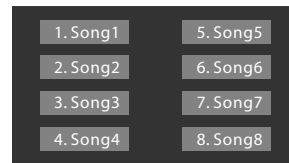
Using the remote controller

- Press **DISP** will appear the video information, Press again to disappear it.
- Press **GOTO** and use the remote controller number button, you can select your desired title, chapter, time.



- Press **ZOOM** to zoom in or zoom out the video.
Zoomx2,x3,x4, x1/2, x1/3,x1/4

Video (VCD) browser



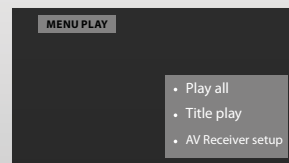
- If play VCD2.0, press **LIST/EXIT** button, unit will enter into VCD DISC MENU, then use the numeric buttons on the remote to select songs or videos.
- If play VCD1.0, press **LIST/EXIT** button, unit will directly play the 1st song or 1st video.

Video (AVI file) list browser



- To return to the previous folder or exit, press.

Video (AV Receiver) browser



- AV Receiver Browser is same as AV menu function.
- AV menu is not same in different AV Receiver Disc.



AV MEDIA

Playing video

Function operation



1. If no operation is done, for about 30 seconds, the operation will be cancelled.

2. Press  or  to exit.

 Function item	Selectable setting
Repeat	AVI: Repeat ALL/One/Folder VCD: Repeat All/One/OFF AV : Repeat OFF/Chapter/Title
Channel	For a VCD, to change the audio channel.(Stereo/left/right)
PBC	For a VCD Disc, to select the PBC (play back control) On or Off
AV Audio	For a AV receiver Disc, to change the sound track language
Subtitle	For a AV receiver Disc, to change the subtitle language recorded on the disc
Angle	For a AV receiver Disc, to change the viewing angle
Aspect Ratio	To select the monitor type to watch a wide screen picture. (16:9, 4:3)
Brightness	Adjust the brightness from 0 to 8
Contrast	Adjust the Contrast from 0 to 8
Color	Adjust the Color from 0 to 8
Default	Reset to the factory settings

BLUETOOTH

Using bluetooth

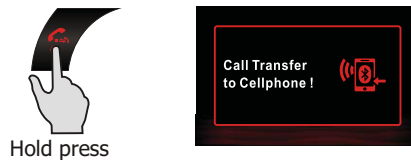
You can make or receive phone calls with Bluetooth-enabled phones through the unit. You can also listen to music from a Bluetooth-enabled device.

How to pair & connect device ?



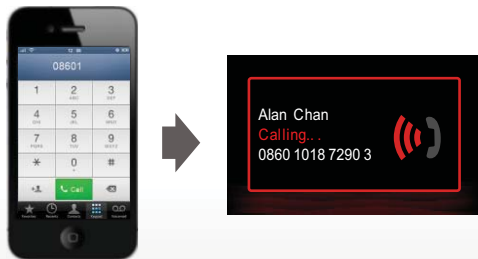
Call Transfer

You can transfer voice from loudspeaker to mobile phones during call.



Making a Call

You can dial number through the mobile phone.

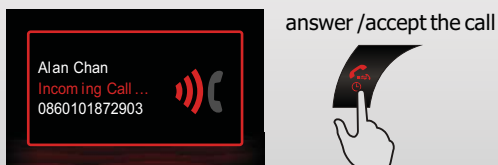


Bluetooth Audio Streaming A2DP

If the connected Bluetooth device supports Advanced Audio Distribution Profile (A2DP), you can listen to the music stored on the device through the unit. If the device also supports Audio Video Remote Control Profile (AVRCP) profile, you can use the control on the unit or its remote control to play music stored on the device.



Receiving a Call



- When conversation ends, press to terminate the call.

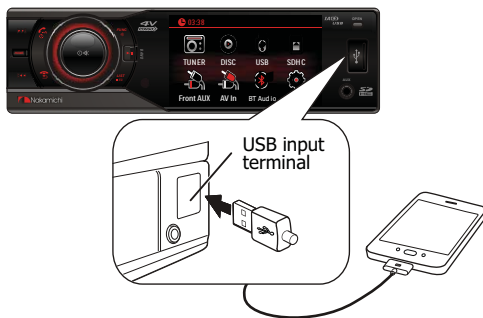
TIPS

1. Press repeatedly to select [BT AUDIO].
2. Press to start play, press it again to pause.
3. To track up/down, press / .

USB 1A CHARGING

USB Smart Phone 1A charging

This model supports USB 1A charge function, You can charge your USB device, for example, smart phone, with this product.



TIPS

1. Slide the USB socket to left.
2. Insert the iPhone or Smart Phone device into the USB socket.
3. Once the iPhone or Smart Phone is connected and recognized, the iPhone/Smart Phone begins to charge.

REFERENCE

Specifications

TFT Monitor section

Screen Size	:3.0 inches
Display Resolution	:320x240 dots
Aspect Ratio	:16:9(wide)

Disc player section

Disc Diameter:	:12cm
Frequency Response	:17Hz - 20kHz
Signal/Noise Ratio	:85 dB
Dynamic Range	:90dB
Video Signal Format	:NTSC

USB interface section

USB Standard	:USB 1.1 Full Speed
File System	:FAT 32/16/12
Maximum Current	:DC 5V= 1A
Compatible Device	:Mass storage class

Memory Card section

Memory Cards	:Micro SD
Maximum Capacity	:32G

Radio section

Frequency FM range	: 87.5 - 107.9 MHz
Frequency AM(MW) range	: 520-1710 KHz
Usable sensitivity	: 9dB(2.8uV (FM))
Sensitivity / Selectivity	: 20 uV/55dB (AM)

Video section

Color System of	: NTSC/PAL
External Video Input (RCA)	: 1 Vp-p /75Ω

Audio section

Maximum Power	: 50Wx4
Continuous Power Output (RMS)	: 24 Wx4
Preout Level (V)	: 4 V
Preout Impedance	: 10kΩ
Speaker Impedance	: 4-8 Ω

General

Operating Voltage	: 14.4V(11-16 V)
Dimension(WxHxD)	: 178x48x172mm
Operational Temperature Range	: 0°C-+40°C
Storage Temperature Range	: -10°C-+60°C

Bluetooth

Output power:	Class 2
Frequency band:	2.4000GHz-2.4835GHz ISM Band
Range:	3 meters (free space)
Standard:	Bluetooth 3.0 specification

USB Smart Phone 1A charging

Output Voltage	: 5 V DC
Output Current	: 1000 mA (1A)



Design and specifications are subject to change
without notice

© 2014 Nakamichi
www.nakamichicaraudio.com

