

Access Controller

AR-101US



► **Mini RS485**
Access Controller/Reader
AR-101US



Keyless Edit
AR101US



Bi-Color Edge
Indicator
AR101US



Small Size
AR101US



User Manual:

a. The manual provided does not include any instruction for the end user. Please provide the user manual.

Access Controller

AR-101US

Mini Proximity Reader

AR-101US (*Dual Band Available)



Frequency	125kHz	13.56MHz
Power Supply	9-24VDC	
Support protocol	EM Standard	MIFARE / DESFire / I-Code (ISO14443A / ISO7816-4)
Reading Range (Depending on tag or card)	3-5cm	1-3cm
Read/Write	Read Only	Read/Write
Communication Interface	UART Protocol	RS-485/9600 bps(N,8,1)
	WG Input	WG 26/34~64 (For WGKEYBOARD operation)
Power Consumption	<1W	
Operating Temperature	-20 °C to +65 °C	
Keypad Material	For WGKEYBOARD operation (AR-WG-KEYBOARD)	
Indicator	1 Bi-color LED & 1 Beeper	
Ingress Protection	NO	
Housing Material	ABS (Optional: Mounting Panel - DMET-PB/DPLA-PB)	
Color	Black	
Dimension(mm)	37(L)X37(W)X31(H)	
Weight(g)	26±10	

Instruction

Adding Tag

- 1 Step.** Present Master Card
- 2 Step.** After 3 short beeps [Access programming mode]
- 3 Step.** Present the new card or cards one by one till finished the adding.
- 4 Step.** Present Master Card [Exit programming mode]

Deleting All Tags

- 1 Step.** Present Master Card
- 2 Step.** After 3 short beeps [Access programming mode]
- 3 Step.** 1 long warning beep after 2sec.
- 4 Step.** 5 short beeps after 5sec: cards cleared

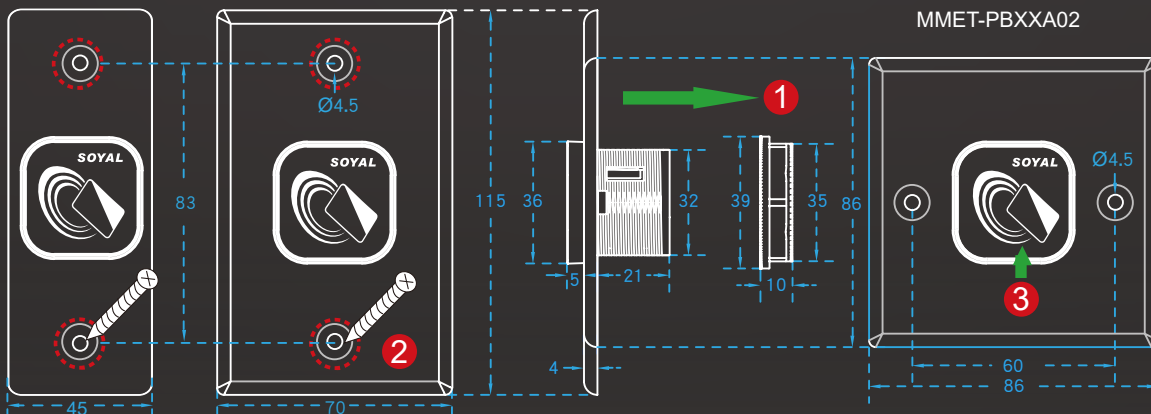
P.S. Once MASTER CARD is presented after one warning beep, all card data will be cleared.

Installation

MMET-PBC9H01

MMET-PBXXA01

MMET-PBXXA02



Installation:

- 1** Take off the black ABS screw nut from behind
- 2** Use a screwdriver to screw the plate to the wall
- 3** Paste the label sticker

Any changes or modifications not expressly approved by the party responsible for compliance could void the user's authority to operate this equipment.

This device complies with Part 15 of the FCC Rules. Operation is subject to the following two conditions:

(1) This device may not cause harmful interference, and (2) this device must accept any interference received, including interference that may cause undesired operation. This device and its antenna(s) must not be co-located or operating in conjunction with any other antenna or transmitter.

NOTE:

This equipment has been tested and found to comply with the limits for a Class B digital device, pursuant to Part 15 of the FCC Rules.

These limits are designed to provide reasonable protection against harmful interference in a residential installation. This equipment generates, uses and can radiate radio frequency energy and, if not installed and used in accordance with the instructions, may cause harmful interference to radio communications.

However, there is no guarantee that interference will not occur in a particular installation.

If this equipment does cause harmful interference to radio or television reception, which can be determined by turning the equipment off and on, the user is encouraged to try to correct the interference by one or more of the following measures:

- Reorient or relocate the receiving antenna.
- Increase the separation between the equipment and receiver.
- Connect the equipment into an outlet on a circuit different from that to which the receiver is connected.
- Consult the dealer or an experienced radio/TV technician for help.

To maintain compliance with FCC's RF Exposure guidelines, The 20cm is the minimum distance that has to be maintained between your body and the device.

FCC ID:2ACLEAR-101US