

Installing the Batteries

The Bluetooth Optical keyboard uses 180mAh Polymer battery.



Hotkeys on the keyboard

SK-658BT Multimedia Hotkeys Functions			
System Keys	FN+E (IOS)	FN+Q (Android)	FN+W (Windows)
Esc	Main Page	Main Page	Esc
F1	Clip	Clip	F1
F2	Copy	Copy	F2
F3	Stick	Stick	F3
F4	Language shift	Language shift	F4
F5	Search	Search	F5
F6	Previous Track	Previous Track	F6
F7	Play/Pause	Play/Pause	F7
F8	Next Track	Next Track	F8
F9	Mute	Mute	F9
F10	Volume Down	Volume Down	F10
F11	Volume Up	Volume Up	F11
F12	Lock screen	Lock screen	F12

Press FN+E into IOS(iPad,iPhone)operation system

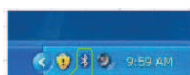
Press FN+Q into Andriod(Damsung Galaxy products)operation system

Press FN+W into Windows operation system

Installing the Bluetooth Wireless Keyboard

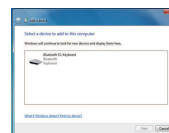
1.Installing the Bluetooth Wireless Keyboard into your computer

- Before using the Bluetooth keyboard with your computer, You need to check whether your computer is equipped with Bluetooth receiver. If not, you will need to purchase an additional Bluetooth receiver and install it correctly onto your computer. once your computer is Bluetooth enabled, the setup applet's icon will appear in the windows taskbar as shown below.



蓝牙图标

- Your computer will now scan for Bluetooth devices in your area and display found devices. Meanwhile press "F1" About 5 sec, then search the devices; Select the keyboard from the list of found devices and click "Next" to continue.



- In the connection to the bluetooth keyboard input the same number after press the Enter key



- The system will automatically finish the installation after clicking "Close" in below window.



FCC Warning Statement

Changes or modifications not expressly approved by the party responsible for compliance could void the user's authority to operate the equipment.

This equipment has been tested and found to comply with the limits for a Class B digital device, pursuant to Part 15 of the FCC Rules. These limits are designed to provide reasonable protection against harmful interference in a residential installation. This equipment generates uses and can radiate radio frequency energy and, if not installed and used in accordance with the instructions, may cause harmful interference to radio communications. However, there is no guarantee that interference will not occur in a particular installation. If this equipment does cause harmful interference to radio or television reception, which can be determined by turning the equipment off and on, the user is encouraged to try to correct the interference by one or more of the following measures: --Reorient or relocate the receiving antenna. --Increase the separation between the equipment and receiver. --Connect the equipment into an outlet on a circuit different from that to which the receiver is connected. --Consult the dealer or an experienced radio/TV technician for help

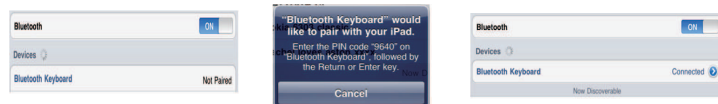
This device complies with part 15 of the FCC rules. Operation is subject to the following two conditions (1) this device may not cause harmful interference, and (2) this device must accept any interference received, including interference that may cause undesired operation.

2.Installing the Bluetooth Wireless Keyboard into Your iPhone/iPad

You will need to manually sync your iPhone/ iPad with the Bluetooth keyboard before use. No further sync is needed if the first sync runs successfully. Please follow the instructions detailed below to complete the sync procedure. Follow the path Settings General Bluetooth on your iPhone/ iPad to enable the Bluetooth function on your iPhone/ iPad.



When Bluetooth is turned on, your iPhone/iPad will start searching for Bluetooth devices automatically. Switch on the Bluetooth keyboard by pressing the connect button underneath the keyboard, Your keyboard will be found by your iPhone/iPad automatically. When the keyboard is found, press the "Bluetooth Keyboard" appearing on the iPhone/iPad screen, a window will pop up with a syncing passkey, Type in the passkey shown given by the iPhone/iPad on the keyboard and then press the "enter" key. Now the Bluetooth keyboard should be connected to your iPhone/iPad as shown in below picture'



3.Installing the Bluetooth Wireless Keyboard into Your iPhone/iPad

The procedure for connecting a keyboard SK658BT for Android devices Turn on the Bluetooth connection on your Android of installations, Press "F1" on your keyboard when searching for a Bluetooth device, For pairing, enter a numeric code that you receive on your Android device and press Enter

Other Considerations

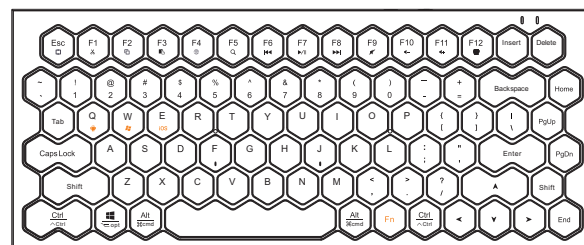
- Power -saving design: When the keyboard does not take any action about 2 seconds into hibernation, press any KEY or touch screen wake
- Right-click on the Bluetooth icon in the windows taskbar, and select Add a device"



Model:SK-658BTW

Instruction Manual

Bluetooth V5.1 Keyboard



Note:

- such as found in the process of using slow flash a red light when low battery for the charge, please
- this product has save electricity processing mechanism, 30 minutes right button will automatically shut off the bluetooth operation, products in the process of secondary back even due to the bluetooth receiver or driver will have different delay problem belongs to the normal phenomenon.
- the computer bluetooth products using bluetooth driver update to the latest version, and close the options "to turn off this device are allowed".
- if want to use as a wired keyboard, insert the distribution line of Micro USB keyboard and computer USB can be used as a wired keyboard, unplug the USB can be used when the bluetooth keyboard. (for example, can use the cable connected to the computer, a bluetooth connection to the phone and tablet)

CAUTION: To use this device properly, please read the user's guide before installation.

Installing the Batteries

The Bluetooth Optical keyboard uses 180mAh Polymer battery.



Hotkeys on the keyboard

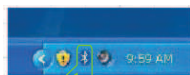
SK-658BT Multimedia Hotkeys Functions			
System	FN+E (IOS)	FN+Q (Android)	FN+W (Windows)
Keys			
Esc	Main Page	Main Page	Esc
F1	Clip	Clip	F1
F2	Copy	Copy	F2
F3	Stick	Stick	F3
F4	Language shift	Language shift	F4
F5	Search	Search	F5
F6	Previous Track	Previous Track	F6
F7	Play/Pause	Play/Pause	F7
F8	Next Track	Next Track	F8
F9	Mute	Mute	F9
F10	Volume Down	Volume Down	F10
F11	Volume Up	Volume Up	F11
F12	Lock screen	Lock screen	F12

Press FN+E into IOS(iPad,iPhone)operation system
Press FN+Q into Andriod(Damsung Galaxy products)operation system
Press FN+W into Windows operation system

Installing the Bluetooth Wireless Keyboard

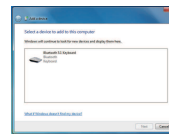
1.Installing the Bluetooth Wireless Keyboard into your computer

- 1). Before using the Bluetooth keyboard with your computer, You need to check whether your computer is equipped with Bluetooth receiver. If not, you will need to purchase an additional Bluetooth receiver and install it correctly onto your computer. once your computer is Bluetooth enabled, the setup applet's icon will appear in the windows taskbar as shown below.



蓝牙图标

- 3). Your computer will now scan for Bluetooth devices in your area and display found devices. Meanwhile press "Enter" About 5 sec, then search the devices; Select the keyboard from the list of found devices and click "Next" to continue.



- 4). In the connection to the bluetooth keyboard input the same number after press the Enter key



- 5). The system will automatically finish the installation after clicking "Close" in below window.



FCC Warning Statement

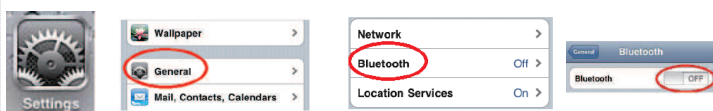
Changes or modifications not expressly approved by the party responsible for compliance could void the user's authority to operate the equipment.

This equipment has been tested and found to comply with the limits for a Class B digital device, pursuant to Part 15 of the FCC Rules. These limits are designed to provide reasonable protection against harmful interference in a residential installation. This equipment generates uses and can radiate radio frequency energy and, if not installed and used in accordance with the instructions, may cause harmful interference to radio communications. However, there is no guarantee that interference will not occur in a particular installation. If this equipment does cause harmful interference to radio or television reception, which can be determined by turning the equipment off and on, the user is encouraged to try to correct the interference by one or more of the following measures: --Reorient or relocate the receiving antenna. --Increase the separation between the equipment and receiver. --Connect the equipment into an outlet on a circuit different from that to which the receiver is connected. --Consult the dealer or an experienced radio/TV technician for help

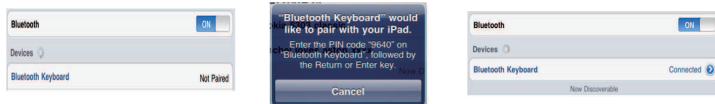
This device complies with part 15 of the FCC rules. Operation is subject to the following two conditions (1) this device may not cause harmful interference, and (2) this device must accept any interference received, including interference that may cause undesired operation.

2.Installing the Bluetooth Wireless Keyboard into Your iPhone/iPad

You will need to manually sync your iPhone/ iPad with the Bluetooth keyboard before use. No further sync is needed if the first sync runs successfully. Please follow the instructions detailed below to complete the sync procedure. Follow the path Settings General Bluetooth on your iPhone/ iPad to enable the Bluetooth function on your iPhone/ iPad.



When Bluetooth is turned on, your iPhone/iPad will start searching for Bluetooth devices automatically. Switch on the Bluetooth keyboard by pressing the connect button underneath the keyboard, Your keyboard will be found by your iPhone/iPad automatically, When the keyboard is found, press the "Bluetooth Keyboard" appearing on the iPhone/iPad screen, a window will pop up with a syncing passkey, Type in the passkey shown given by the iPhone/iPad on the keyboard and then press the "enter" key, Now the Bluetooth keyboard should be connected to your iPhone/iPad as shown in below picture'

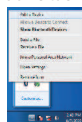


3.Installing the Bluetooth Wireless Keyboard into Your iPhone/iPad

The procedure for connecting a keyboard SK658BT for Android devices Turn on the Bluetooth connection on your Android of installations, Press "Enter" on your keyboard when searching for a Bluetooth device, For pairing, enter a numeric code that you receive on your Android device and press Enter

Other Considerations

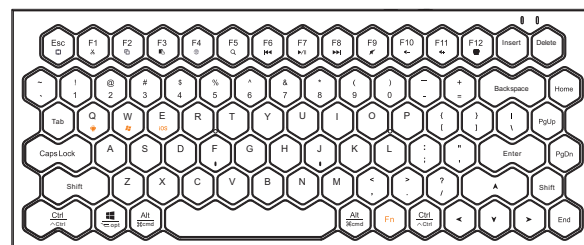
- 1). Power -saving design: When the keyboard does not take any action about 2 seconds into hibernation, press any KEY or touch screen wake
- 2). Right-click on the Bluetooth icon in the windows taskbar, and select Add a device"



Model:SK-658BTW

Instruction Manual

Bluetooth V5.1 Keyboard



Note:

- 1, such as found in the process of using slow flash a red light when low battery for the charge, please
- 2, this product has save electricity processing mechanism, 30 minutes right button will automatically shut off the bluetooth operation, products in the process of secondary back even due to the bluetooth receiver or driver will have different delay problem belongs to the normal phenomenon.
- 3, the computer bluetooth products using bluetooth driver update to the latest version, and close the options "to turn off this device are allowed".
- 4, if want to use as a wired keyboard, insert the distribution line of Micro USB keyboard and computer USB can be used as a wired keyboard, unplug the USB can be used when the bluetooth keyboard. (for example, can use the cable connected to the computer, a bluetooth connection to the phone and tablet)

CAUTION: To use this device properly, please read the user's guide before installation.