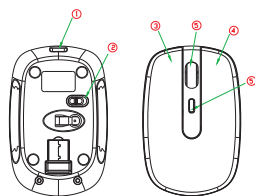


Parts Number

- (1).Battery interface
- (2).Power Switch
- (3).Left click Button
- (4).Right click Button
- (5).Scroll wheel
- (6).DPI Button



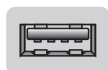
The mouse use one 400mAH built-in lithium battery.

Charging instructions

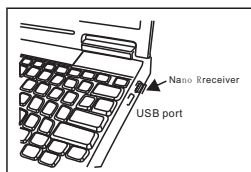
- 1.The RED LED indicator will be ON while charging. After fully charged, the LED will turn off.
- 2.Charging time:2.5hours
Using time: 12days for one charging

Connecting the Receiver

Insert the nano receiver to USB port immediately,or by a extra USB cable.

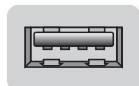


USB Port

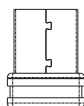


- 1.Connect the USB plug to USB port of your computer

Connecting the Receiver



USB Port



Nano receiver

Restoring factory default settings

If the mouse doesn't work, pls

- 1.replace new batteries timely if the batteries have run out;
- 2.disconnect and re-connect the nano receiver to the USB port to establish new connection for the mouse;
- 3.move the mouse more closer to the receiver if the device is out of the optimum range;

State of standby and wake up the mouse

Without any clicks or scroll movement for 8 minutes, the mouse will go into standby mode. Click any button or scroll the wheel to wake up the mouse.

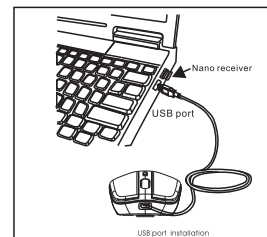
Under this economize mode, the optical Red LED will turn of automatically and the mouse won't respond by moving it.

Power-Save function:

- 1.Without using the mouse for 1 minute, the mouse will go into sleep mode level1.You can move it to wake up the mouse. The Red LED is still on.
2. Without using the mouse for 1-8 minutes, the mouse will go into sleep mode level 2. You can move it to wake up the mouse. The Red LED keep flashing.
- 3.Without using the mouse for more than 8 minutes, the mouse will go into deep sleep mode. The LED turn off automatically.

Recharging wireless mouse by charging cable

take out the charging cable,plug into the charging cable into computer's USB port ,and plug the mini USB pole into the USB port in the front of mouse in the next step



Dpi shift function

Your optical 3 button mouse is provide 800/1200/1600 dpi switch.



DPI Switch

Obtain the receiver on the mouse

- 1.If you want to use the mouse,pls take out the receiver (shown in picture 1) and connect it to computer;
- 2.If you want to stop using the mouse, pls store the receiver onto the mouse (shown in picture 2);



1
Take out the receiver



2
Store the receiver

Model:SM-314CAG

Instruction Manual

RF2.4GHz Optical Mouse



CAUTION: To use this device properly, please read the user's guide before installation.

FCC STATEMENT:

This device complies with Part 15 of the FCC Rules. Operation is subject to the following two conditions:

- (1) This device may not cause harmful interference, and
- (2) This device must accept any interference received, including interference that may cause undesired operation.

Warning: Changes or modifications not expressly approved by the party responsible for compliance could void the user's authority to operate the equipment.

NOTE: This equipment has been tested and found to comply with the limits for a Class B digital device, pursuant to Part 15 of the FCC Rules. These limits are designed to provide reasonable protection against harmful interference in a residential installation.

This equipment generates uses and can radiate radio frequency energy and, if not installed and used in accordance with the instructions, may cause harmful interference to radio communications. However, there is no guarantee that interference will not occur in a particular installation. If this equipment does cause harmful interference to radio or television reception, which can be determined by turning the equipment off and on, the user is encouraged to try to correct the interference by one or more of the following measures:

Reorient or relocate the receiving antenna.

Increase the separation between the equipment and receiver.

Connect the equipment into an outlet on a circuit different from that to which the receiver is connected.

Consult the dealer or an experienced radio/TV technician for help.