

Introduction of its ports and indicators



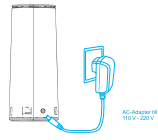
- Product parts:**
- ① RESET (factory reset)
 - ② USB3.0 typeB port (USB3.0 transmission output)
 - ③ RJ45 port (Ethernet port)
 - ④ Power
 - ⑤ USB HOST (for external devices, such as USB Flashes, HDDs, and readers)
 - ⑥ LED status indicator

Quick settings

Thank you for purchasing SSK Cloud SSM-F100. Only two steps are needed to start the storage:

Power on the storage

Connect the storage to the power supply, the LED indicator light up:



APP Set-up

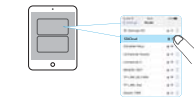
Scan the following two-dimension code or search SSKCloud on App Store/Google play, and then download APP for Apple or Android.



SSK Cloud SSM-F100 APP

Connect the SSM-F100 to mobilephones

- (1) Seek the Wi-Fi hotspot of SSK Cloud Searching the WiFi hotspot of the SSK Cloud by mobile devices of iPad, then connect



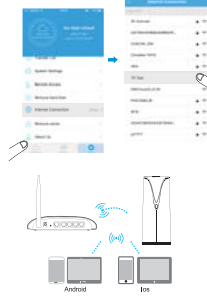
(2) Click SSKCloud App, then access to the storage



- (3) After connecting to skskcloud wifi hotspot, you might find that your mobile devices cannot access to internet. The reason for this is that the storage skskcloud does not connect to external network.

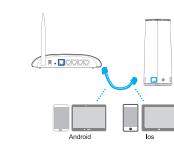
Ways to connect to internet for skskcloud:

Wireless connection



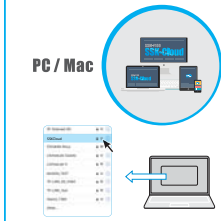
Or Wired connection

Insert the lan cable to Ethernet port.



Remark: In order to ensure of the access speed, recommend the use of lan cable to connect the internet.

Wireless Connect PC to SSM-F100

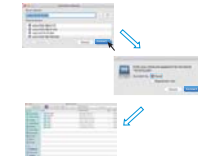


(1) Access to the product by SAMBA(Windows)

Open my computer, and input \\10.10.10.254 in the address bar

(2) Access to the product by SAMBA(Mac os)

- Open Finder → Click [Go] → Click [Network]
- Input smb://10.10.10.254

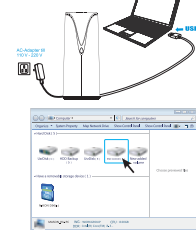


(3) Visit the storage by Web/Suitable for all devices



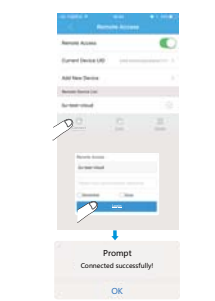
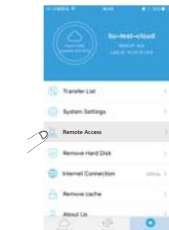
Connect storage to PC by the wire-- High speed HDD mode

PC / Mac



Remote accessing mode

1. Connect skskcloud to internet How to connect skskcloud to internet pls reference the steps of (1)
2. Click on the remote access icon



TIPS AND FAQ OF SSK

What is "SSM-F100 SSK Cloud" ?

"SSM-F100 SSK Cloud" is a solution for the storage, backup and management of family data, the system of which can keep the privacy and stability of the data effectively, make the complex backup and management of data become simple and easier.

How about its features?

- ① Built-in 3.5 inch **3TB** storage, with USB3.0 transmission rate
- ② APP remote management, make the data transmission and share easier
- ③ Simple to operate, enjoy a various of backup mode
- ④ Support remote access, you can read and store the data anywhere anytime
- ⑤ Support double backup function local storage and public cloud, ensure the safe of your data.

Are there any other features of it?

Connect the WiFi hotspot of SSKCLOUD showed on your mobile phone, and then click APP to use.

Can videos stored in it be played directly?

No matter what kind of your devices, Apple or Android can play the main stream format video directly by SSKCLOUD drive-side software.

Optimal placement

The product is better to be placed in an open space, and any obstructions is avoid around the cloud, because there are 2 built-in high gain PCB omni-directional antennas.

The best cooling effect

There is a circle of heat dissipation on the bottom and top of the SSK Cloud, in order to ensure the stability of the product for working a long time, the heat dissipation should not be sheltered, and tear the protective film off before using it.

Wireless transmission rate

SSK Cloud adopts 2.4G network output 802.11n wireless protocol standards, its max transmission rate can be 300Mbps, with 2.4G network signal coverage of which is broad and the signal penetrability of its is strong.

The system of SSK Cloud

The Linux of the SSK Cloud uses is developed by SSK, and it has a good security rate and high efficiency And it can be more intelligent and stable by periodical OTA update.

The HDD and Format of SSK Cloud

ItK do not shake or drop it when it is powered in order to make sure its normal work, because of the built-in 3.5" 3TB HDD. The partition and format of the product has been done already, so it can be used directly after setup.

Note: The partition of the 3TB SSK Cloud adopts GPT mode, so it might not support Windows XP system or lower than that. If it need to be used in Windows XP system or lower ones, pls change its partition mode to MBR.

The warranty and DATA

One year warranty service is provided after sales, and the HDD can be changed freely if there is malfunction or damage which is comply with the warranty regulations during the warranty period.

And all data in the SSK Cloud will not be saved or recovered when its HDD need to be changed or repaired, so synchronize backup your data to the public cloud is recommended.

The dormancy of the product

In order to make sure its efficiency and stability, its HDD will shut work/dormancy status automatically, to reduce power consumption and a better protection for the HDD.

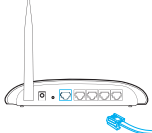




快速设置

请仔细阅读SSK家存储产品
并开启新设备生活，只需简单的三个步骤：

- 1. 插上电源和网络
连接电源适配器，并将外网线插入家存储的网络接口。
- 2. 连上SSK家存储产生的WiFi热点
使用移动设备或平板扫描家存储上家存储
附赠的标为“SSK-Cloud xxx”的WiFi连接码。



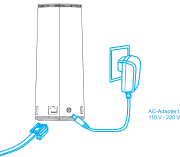
1/3

安装APP

访问下列二维码，下载并安装安卓版APP软件，您将
轻松愉快的使用SSK家存储产品。

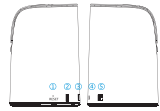


安卓 APP



2/3

产品接口及LED指示灯说明



- 产品接口：
- ① RESET (恢复出厂设置)
 - ② USB 3.0 接口 (3.0 数据傳輸接口)
 - ③ RJ45 接口 (网口)
 - ④ 电源接口
 - ⑤ USB HOST (用于外接U盘，移动硬盘，读卡器等扩展设备)
 - ⑥ LED 状态指示灯

3/3

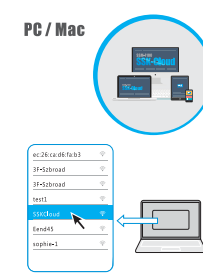
手机无线连接家存储

- 1. 连接SSK-Cloud 热点
- 2. 打开SSK-Cloud App



4/3

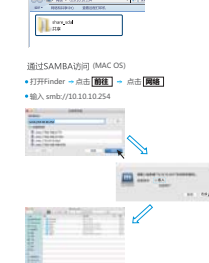
电脑无线连接家存储



5/3

① 通过SMB访问 (WINDOWS)

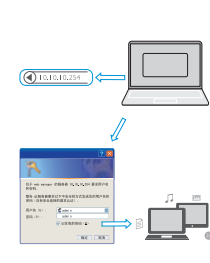
打开我的电脑，在地址栏输入“\\10.10.10.254”



6/3

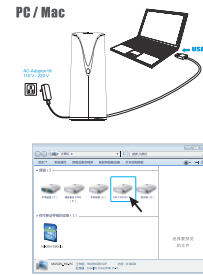
② 通过WEB访问 (适用于电脑)

打开浏览器页面，地址栏输入：10.10.10.254



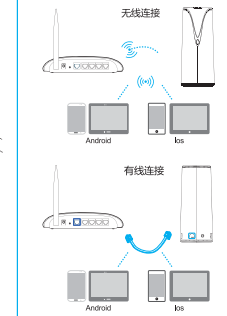
7/3

高速移动硬盘模式



8/3

远程访问模式



9/3

2.打开远程访问开关



10/3



11/3

SSK温馨提示及常见问题

家存储是什么？
“家存储”是一个主要针对家庭数据存储备份和管理
的解决方案。该系统能有效保证数据的稳定性和
稳定性，让管理您的数据和数据变得轻松简单。

家存储有哪些特点？

- ① 大容量存储空间，USB3.0高速传输。
- ② 使用手机APP，轻松进行无线数据传输和分享。
- ③ 操作简单的人性化体验，享受多种快捷备份方式
- ④ 支持远程访问，随时随地备份数据。
- ⑤ 本地存储和公有云存储双重备份，保障资料安全无忧。

家存储有哪些特点？
手机去通过WiFi连接到家存储SSK-Cloud，然后点开APP，就
可以使用。

家存储中的视频，可以直接播放吗？
通过SSK-Cloud 客户端软件，无论手机还是安卓设备，都可以直
接播放主流格式的视频文件。

12/3

最佳摆放位置

SSK家存储为2.5英寸高容量2.5英寸向外观，建议将产品摆放在室内
中间位置，产品用原包装密封有防尘密封物品。

最佳散热效果

SSK家存储，产品顶部和底部各有一圈散热孔，为了保证产品长时间
正常工作稳定性，请确保不要遮挡这两圈散热孔，并在使用产品
前将产品表面密封。

无线传输速度

家存储使用，40网络支持602.11n无线传输标准。最大
传输速率可达300Mbps，2.40网络的特点是信号强，广
覆盖范围广。

家存储产品的系统

家存储使用SSK自主研发的Linux系统，具有良好的安全性和极高的
效率。通过定期的OTA升级让家存储系统变得更新更智能和稳定。

家存储兼容及格式化

家存储兼容SSK+30兼容作为存储介质，请用户在产品通电状态
下拔出和插入，保证数据正常工作。家存储产品出厂已经格式化
区和格式化工作，用户开机后可以直接使用。

备注：家存储30兼容使用7.5英寸分区，Windows XP及以下版本系
统可能无法支持，请家存储和Windows XP等低版本系统下使用，请将磁盘及
分区方式进行分区。

硬盘保修及数据

家存储提供自硬盘出厂之日起一年质保服务，保修期间出现的问
题将免费维修或更换。可以免费更换硬盘。
*保修条例中所有条款相关的更换，维修均无法保存和还原硬盘中相
关数据，请用户使用时务必做好数据备份。

产品质保

为了保证家存储长期稳定高效的工作，硬盘会在使用情况自动切
换工作/休眠状态，更好的防止过热并降低功耗。



13/3

FCC STATEMENT

1.This device complies with Part 15 of the FCC Rules.

Operation is subject to the following two conditions:

(1)This device may not cause harmful interference,
and

(2)This device must accept any interference received,
including interference that may cause undesired
operation.

2.Changes or modifications not expressly approved by
the party responsible for compliance could void the
user' s authority to operate the equipment.

FCC Radiation Exposure Statement:

This equipment complies with FCC radiation exposure
limits set forth for an uncontrolled environment. In
order to avoid the possibility of exceeding the FCC radio
frequency exposure limits, Human proximity to the
antenna shall not be less than 20cm (8 inches) during
normal operation.



NOTE: This equipment has been tested and found to comply with the limits for a Class B digital, pursuant to Part 15 or the FCC Rules. These limits are designed to provide reasonable protection against harmful interference in a residential installation. This equipment generates, uses and can radiate radio frequency energy and, if not installed and used in accordance with the instructions, may cause harmful interference to radio communications. However, there is no guarantee that interference will not occur in a particular installation. If the equipment does cause harmful interference to radio or television reception, which can be determined by turning the equipment off and on, the user is encouraged to try to correct the interference by one or more of the following measures:

- Reorient or relocate the receiving antenna.
- Increase the separation between the equipment and receiver.
- Connect the equipment into an outlet on a circuit different from that to which the receiver is connected.
- Consult the dealer or an experienced radio/ TV technician for help.