

SSK

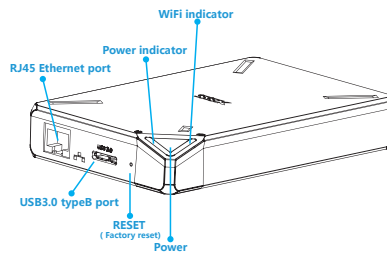
SSM-F200

Quick Guide of the SSK Cloud

Quick settings

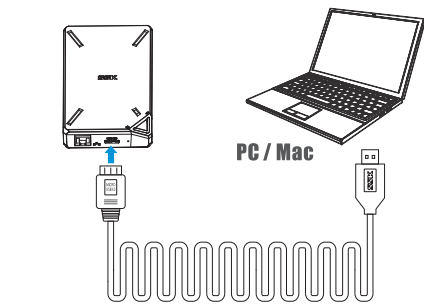
Thank you for purchasing SSK Cloud SSM-F200. Please read the manual carefully before using:

Product interfaces and LED indicators

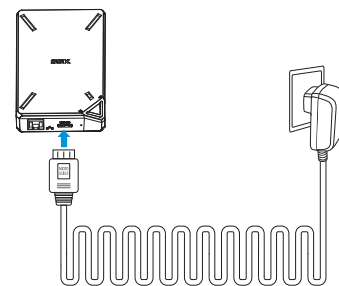


How to charge the product

- ① Charge it by PC/Mac



② Charge it by USB adapter



APP Set-up

Scan the following two-dimension code or search SSKCloud on App Store/Google play, and then download APP for Apple or Android.



SSK Cloud
SSM-F100
APP

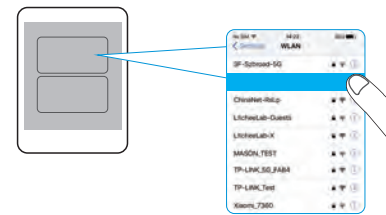
SSK-Cloud Apps

iOS, Android



Connect the SSM-F100 to mobilephones

- Seek the Wi-Fi hotspot of SSK Cloud
Searching the WiFi hotspot of the SSK Cloud by mobile devices or iPad, then connect

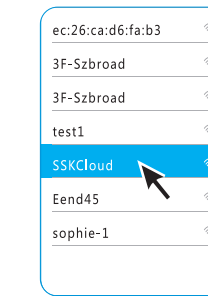


- Click SSKCloud App, then access to the storage



Ways to connect PC to SSM-F200

PC / Mac



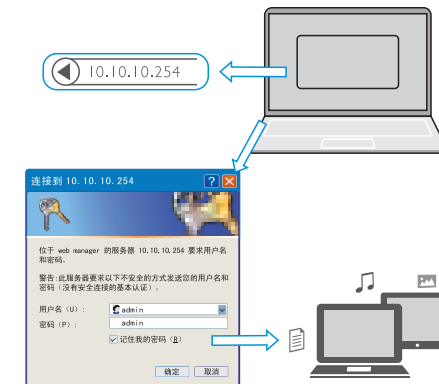
① Access to the product by SAMBA

Open my computer, and input \\10.10.10.254 in the address bar



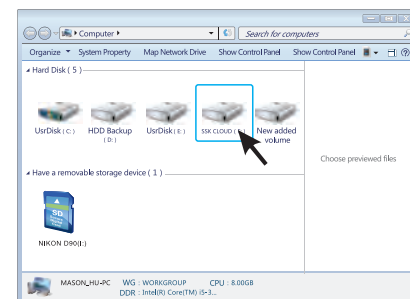
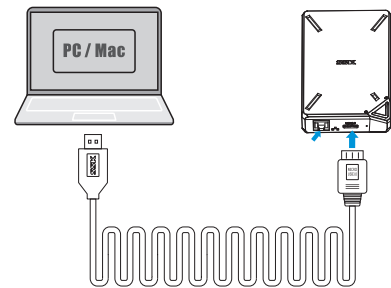
② Visit the product on WEB

Open IE explorer, and enter 10.10.10.254 into the address bar



www.ssk.cn

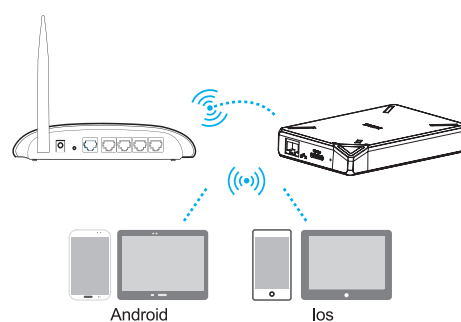
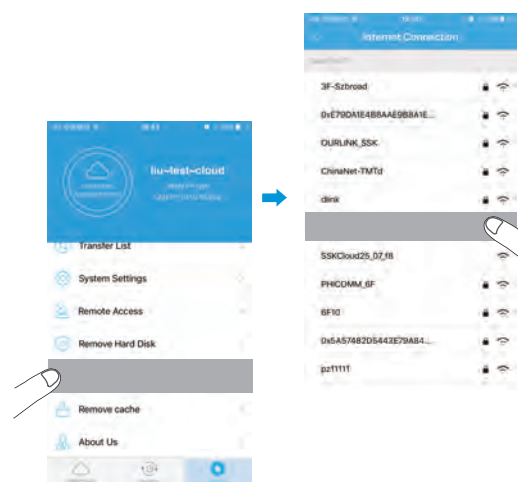
Connect SSM-F200 to PC by the wire-High-speed HDD mode



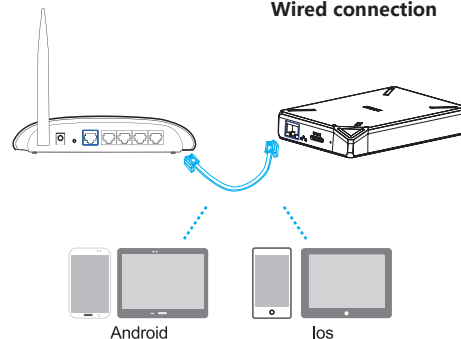
Remote accessing mode

- 1. First, connect SSK Cloud to Internet

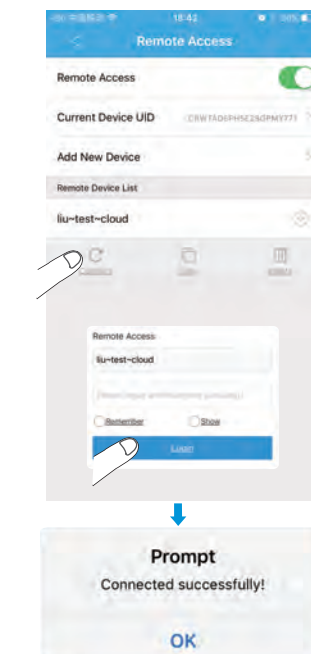
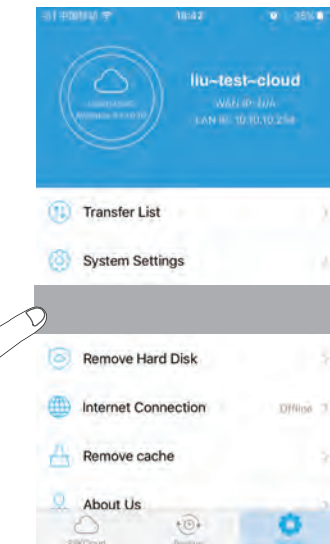
Wireless connection



Wired connection



- 2. Then click on the remote access icon and login



TIPS AND FAQ of SSK

What is "SSM-F200 SSK Cloud" ?

"SSM-F200 SSK Cloud" is a solution for the storage, backup and management of personal data, the system of which can keep the privacy and stability of the data effectively, make the complex backup and management of data become simpler and easier.

How about its features?

1. Built-in 2.5 inch **1TB** storage, with USB3.0Hi-transmission rate;
2. Built-in 4000mAh Lithium polymer battery, portable and convenient to use;
3. High-gain WiFi antenna, 300Mbps wireless connecting and transmitting rate;
4. Simple APP remote management, multiple fast backup modes;
5. Support remote access and manage, you can read and store the data anywhere anytime;
6. Support multiple platforms using, such as IOS, Android, Windows, Mac OS.

How to connect it with mobile

Connect the WiFi hotspot of **SSK CLOUD** showed in your mobile phone, and then click the APP to visit the cloud.

Can videos stored in it be played directly?

No matter what kind of your device is, Apple or Android, can play the main stream format video directly by SSKCLOUD client-side software.

Wireless transmission rate

SSK Cloud adopts 2.4G network output 802.11n wireless protocol standards, its max transmission rate can be 300Mbps, with 2.4G network, signal coverage of which is broad and its signal penetrability is strong.

The system of SSK Cloud

The Linux of the SSK Cloud uses is developed by SSK, and it has a good security rate and high efficiency. And it can be more intelligent and stable by periodical OTA update.

The HDD and Format of SSK Cloud

Please do not shake or drop it when it is powered in order to make sure its normal work, because of the built-in 2.5" 1TB HDD. The partition and format of the product has been done already, so it can be used directly after setup.

The warranty and DATA

One year warranty service is provided after sales, and the HDD can be changed freely if there is malfunction or damage which is comply with the warranty regulations during the warranty period.

*And all data in the SSK Cloud will not be saved or recovered when its HDD need to be changed or repaired, so synchronize backup your data to the public cloud is recommended.

The dormancy of the product

In order to make sure its efficiency and stability, the HDD of the product will shift work/dormancy status automatically, to reduce power consumption and a better protection for the HDD.

NOTE: This equipment has been tested and found to comply with the limits for a Class B digital, pursuant to Part 15 of the FCC Rules. These limits are designed to provide reasonable protection against harmful interference in a residential installation. This equipment generates, uses and can radiate radio frequency energy and, if not installed and used in accordance with the instructions, may cause harmful interference to radio communications. However, there is no guarantee that interference will not occur in a particular installation. If the equipment does cause harmful interference to radio or television reception, which can be determined by turning the equipment off and on, the user is encouraged to try to correct the interference by one or more of the following measures:

- Reorient or relocate the receiving antenna.
- Increase the separation between the equipment and receiver.
- Connect the equipment into an outlet on a circuit different from that to which the receiver is connected.
- Consult the dealer or an experienced radio/ TV technician for help.

FCC STATEMENT

1. This device complies with Part 15 of the FCC Rules. Operation is subject to the following two conditions:
 - (1) This device may not cause harmful interference, and
 - (2) This device must accept any interference received, including interference that may cause undesired operation.
2. Changes or modifications not expressly approved by the party responsible for compliance could void the user's authority to operate the equipment.

FCC Radiation Exposure Statement:

The device has been evaluated to meet general RF exposure requirement.
The device can be used in portable exposure condition without RF striction.

