



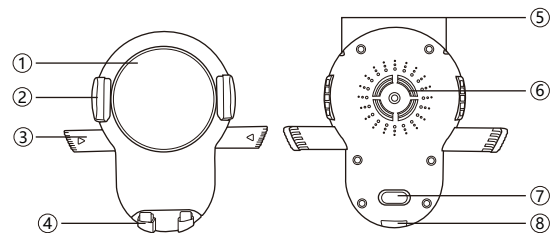
WIRELESS CHARGING
DASH MOUNT

Model: ONA19WI702

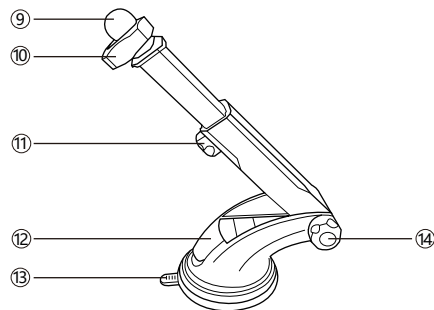
PRODUCT GUIDE

PRODUCT DIAGRAM

Holder



Suction Base



1. Wireless Charger (Fast Clamping Button)
2. Clamps
3. Clamp Release Bars
4. Tray
5. LED Indicators
6. Steering Knuckle
7. Tray Release Button

8. Micro USB Charging Port
9. Ball Joint
10. Stabilizing Nut
11. Arm Release Button
12. Suction Cup Locking Lever
13. Suction Cup Tab
14. Angle Adjuster

SPECIFICATIONS

Model	ONA19WI702
Input (Wireless Charger)	5V / 2A
Output (Wireless Charger)	5W Max
Micro USB Cable Length	91cm / 3ft
Dimensions	115 x 109 x 59mm / 4.5 x 4.3 x 2.3in
Weight	185g / 6.5oz

FCC Statements

Caution: The user is cautioned that changes or modifications not expressly approved by the party responsible for compliance could void the user's authority to operate the equipment.

This device complies with Part 15 of the FCC Rules. Operation is subject to the following two conditions:

- (1) this device may not cause harmful interference, and
- (2) this device must accept any interference received, including interference that may cause undesired operation.

NOTE: This equipment has been tested and found to comply with the limits for a Class B digital device, pursuant to part 15 of the FCC Rules. These limits are designed to provide reasonable protection against harmful interference in a residential installation. This equipment generates uses and can radiate radio frequency energy and, if not installed and used in accordance with the instructions, may cause harmful interference to radio communications. However, there is no guarantee that interference will not occur in a particular installation. If this equipment does cause harmful interference to radio or television reception, which can be determined by turning the equipment off and on, the user is encouraged to try to correct the interference by one or more of the following measures:

- Reorient or relocate the receiving antenna.
- Increase the separation between the equipment and receiver.
- Connect the equipment into an outlet on a circuit different from that to which the receiver is connected.
- Consult the dealer or an experienced radio/TV technician for help

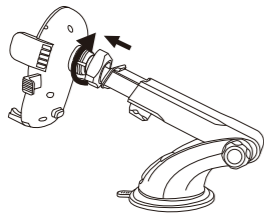
FCC Radiation Exposure Statement:

This equipment complies with FCC radiation exposure limits set forth for an uncontrolled environment. This equipment should be installed and operated with a minimum distance of 20cm between the radiator and your body. This transmitter must not be co-located or operating in conjunction with any other antenna or transmit

The 'Qi' symbol is a trademark of the Wireless Power Consortium.

QUICK INSTALLATION

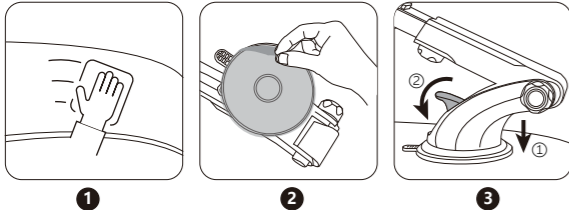
Assembling the Holder



Click the ball joint into steering knuckle, screw the stabilizing nut to lock in place.

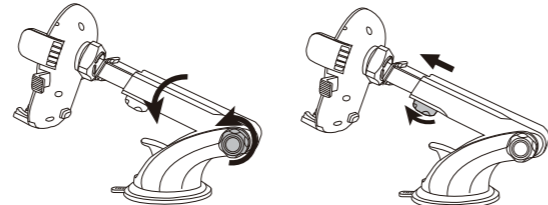
Note: Place the stabilizing nut in the correct angle, or the ball won't be able to fit into the knuckle.

Installing the Suction Base



1. Wipe clean the surface before installation.
2. Remove the protective plastic on the base, place the base onto the cleaned spot.
3. Hold the base and press the suction cup locking lever to lock in place.

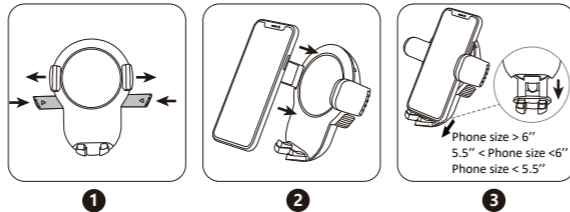
Ver01 12/03/18



Adjust the height and angle of the mount as needed via the Arm Release Button and Angle Adjuster.

Note: To remove the base, just pull up the suction cup locking lever and then the suction cup tab hard (due to a sticky base surface).

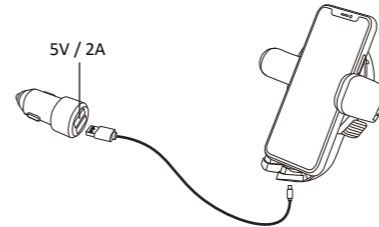
Charging Your Phone



1. Press the clamp release bars to open the clamps.
2. Place the smartphone with wireless charging functionality onto the wireless charger, press it slightly to close the clamps.
3. Press the Tray Release Button and adjust the tray as per your phone size.

Note: Try to align the center of the phone with that of the wireless charger.

Ver01 12/03/18



4. Connect the Micro USB cable into the charging port and the USB connector into the car charger (not included). The LED indicator will turn on blue indicating a successful connection.

LED Indicator Status

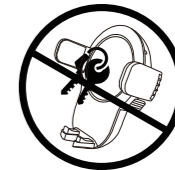
Light up blue for 10s -> Off	Connected to power
Steady Blue	Charging / Quick charging
Flashing Red	Error / Overvoltage
Off	Charging completed / Not connected to power

Note:

- Phone cases with thickness over 0.2 inch / 0.5cm will not be detected.
- Align the center of your phone on the wireless charger for charging.
- Use a car charger with 5V / 2A at a single port for normal functionality.

CAUTION

- Do not drop, knock, or squeeze the product.
- Do not dismantle or throw the product in fire or water to avoid causing short circuit or leakage.
- Stop the charging immediately and remove all plugs if the charger gets wet. Do not use again until it's completely dry.
- Do not use the wireless charger in severely hot, humid, or corrosive environments to avoid circuit damage and leakage.
- Do not use the charger if it has excessive dents, punctures, damages, or deformities.
- Do not place close to magnetic stripe or chip card (ID card, bank cards, keys, etc.) to avoid magnetic failure.



- Make sure the back of your phone or phone case is even without foreign metal objects.
- Keep at least 20cm / 7.9in away from implantable medical devices (pacemakers, implantable cochlear, etc.) to avoid potential magnetic interference.
- Keep away from children.

Ver01 12/03/18

Ver01 12/03/18

尺寸：90*127mm

折页

材质：128克铜版纸