



**SK 9026 Mobile Intelligent Terminal**

# User Guide

**SUPOIN Information Technology (Shenzhen) Co., Ltd.**

Addr : Floor 36th,BlockA,World Trade Plaza,No.9Fuhong Road,FutianDistrict,Shenzhen,China.

Tel : 0755-82178516 25828560 Fax : 0755-82281509

Customer Service Hotline : 4006-188-126  
[www.supoin.com](http://www.supoin.com)

Version: GWB February 24, 2013

## TABLE OF CONTENT

<b>CHAPTER 1</b>	
<b>BRIEF INTRODUCTION</b>	01
<b>CHAPTER 2</b>	
<b>PHYSICAL PARAMETER SPECIFICATION OF TERMINAL OF THE 2.6 GENERATION</b>	02
<b>CHAPTER 3</b>	
<b>BASIC OPERATING GUIDE</b>	04
3.1 VIEW OF SUPOIN MOBILE INTELLIGENT TERMINAL	04
3.2 STARTUP, STANDBY, RESUME (FROM STANDBY), RESET, SHUTDOWN	06
3.2.1 Startup	06
3.2.2 Standby	06
3.2.3 Resume from standby	06
3.2.4 Reset	06
3.2.5 Shutdown	06
3.3 GUIDE ON FUNCTION KEY AND EXPANSION INTERFACE	06
3.3.1 Function key	06
3.3.2 Expansion interface	07
<b>CHAPTER 4</b>	
<b>SYSTEM FUNCTION GUIDE</b>	08
4.1 APPLICATION COVERED BY WINDOWS CATALOGUE	08
4.2 WIFI SETTING	13
4.3 RELEVANT PROCEDURE SETTING OF CONTROL PANEL	16

## Chapter 1 Brief introduction

Thank you for using Supoin mobile terminal!

Mobile terminal, a handy palmtop of compounding type, is operated by Windows CE system. It has integrated barcode reading device, color touch screen, keyboard and endless communication functions into a whole. The terminal has provided standard use-interface of Windows, and this brochure will enable you to know better about how to use the terminal.

This operating brochure mainly introduces user instruction of mobile terminal SHT26.

## Chapter 2

### Physical parameter specification of terminal of the 2.6 generation

1	CPU	Samsung 2416 400M
2	FLASH	128M
3	Memory	128M
4	Screen	3.2 inches 240*320
5	One-dimensional code	Se955 (Laser)
6	Two-dimensional code	Nonsupport
7	Scanning head	Straight head
8	USB transfer	USB disk/synchronization
9	Bluetooth	Support
10	Mobile communication module	WIFI+ Bluetooth
11	Camera	Nonsupport
12	Micro SD TF	Maximum 4G
13	Notification	Horn, indicator, vibrator
14	Keyboard	27 keys(25 normal keys, 1 on & off key, 1 resetting key), nonsupport noctiluent
15	Buttery capacity	3200mah
16	Estimated battery endurance	More than 10 hours under normal condition
17	Scanning speed	116 per/second
18	Scanning angle	47°±3°
19	Max scanning width	101.6cm
20	Scanning light source	650nm Laser

21	Max scanning distance	114.3cm
22	Charging adaptor	AC 100~240V 50/60HZ; Output: DC 5V/1.5A
23	Scan times of full battery	>20000per time
24	Communication interface	RS232/USB2.0 Interface
25	Service environment	-15°C ~ 45°C 5%~95%RH
26	Protection grade	IEC standard Ip65
27	Impact strength against dropping	2.5m dropping to cement floor
28	External dimension	181.5(length) mm * 35(thickness) mm
29	Weight	328g
30	Chinese character input method	Chinese hand-writing input;
31	Standard fitting	Battery adaptor, lithium batter, sling, handwriting pen, USB cable
32	Operating system	wince5.0

Chapter 3  
Basic Operating Guide

3.1 view of Supoin Mobile Intelligent Terminal



Top view, Front view, Bottom view



## 3.2 Startup, standby, resume (from standby), reset, shutdown

### 3.2.1 Startup

Long press red “power key” on the top left corner of screen until “Supoin Information Technology” appears on the screen, and release the button, indicating that the terminal is open.

### 3.2.2 Standby

In case that terminal is not in service for a while and power off is not necessary, shortly press the red “power key” on the top left corner of screen until the whole screen goes black, and the terminal is in the shallow dormancy of standby status.

### 3.2.3 Resume from standby

If resuming (from standby) is needed, just shortly press the red “power key” on the top left corner of screen until screen resumes as before.

### 3.2.4 Reset

If procedure and circuit are needed to go back to original status of restarting, just press “small red button” on the right bottom of “direction key” on keyboard to reset.

### 3.2.5 Shutdown

For shutdown, just long press the red “power key” on the top left corner of screen until the whole screen goes black.

## 3.3 Guide on function key and expansion interface

### 3.3.1 Function key

**[OK] key:** the enter key

**[#] key:** to shift input method.

**[ ▲ ▼ ◀ ▶ ] key:** the pointing direction based on direction key, and the up, down,

left and right directions are available when pressing it.

**[C] key:** when inputting code and text, C key can be used as backspace key (delete pre-completion single value of cursor).

**[R] key:** can be used as return and exit

**[F1] 、 [F2] 、 [F3] 、 [F4] :** the function keys are of specified functions based on each interface.

### 3.3.2 Expansion interface

**1) How to use TF card correctly:** take TF card out: open rear cover of the terminal and take out battery, you can see a TF card slot inside it, slightly push the iron cover (which bottom is made of white rubber) of the slot toward the end of TF card, then the slot is open and TF card is available to take out. Insert TF card: open the iron cover of TF card slot, down the chip of TF card, place the card in the slot, and slightly push the cover up to buckle up.

**2) How to charge correctly:** connect charger in interface direction with charge interface correctly, (the round hole on the right bottom of the terminal is the charge interface), plug it into power supply, meanwhile, indicator (three indicators on the top right corner of the terminal, among them the rear rightmost one is the power indicator) goes red color, representing charging; if the indicator shows no color at all, please check interface and power supply. When battery charge completes, the indicator will change into green color.

**Note:** long-time charging after full battery will decrease the life expectancy of battery.

**3) How to scan correctly:** when scanning codes, please press Scan key and release soon (possible when red light turns out) to make red light cover all code.

Chapter 4  
System Function Guide

4.1 Application covered by Windows catalogue

1) After startup, startup desktop of terminal shall display on the screen, see Picture 1



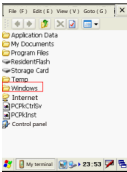
Picture 1 Startup Desktop

2) Double click Windows file under the catalogue of “My terminal” to perform corresponding system operation.

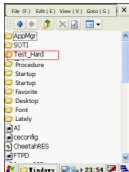


Picture 2 My Terminal

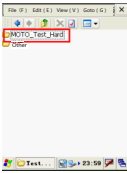
3) Double click document file of Test hard (Picture 4) =>MOTO\_Test\_Hard (picture 5)  
=>Test\_hard.exe(Picture 6) under Windows (Picture 3), then appear an operating interface, where you can see the external power value, version, release time of core and corresponding settings of the terminal(Picture 7).



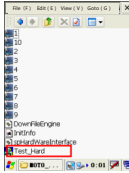
Picture 3



Picture 4



Picture 5



Picture 6



Picture 7

4) Bar code setting, double click bar code setting (Picture 8), enter password (Picture 9): 887651234 to set. After click in (Picture 10), any able (able: set corresponding code scanning system) or disable (disable: set disable code system, after being disable, corresponding bar code is unable to be scanned) can be set. Corresponding code system can be set based on demands of scanning different codes of code system, for example, click able setting Code39 and complete the setting, then setting is succeeded.



Picture 8

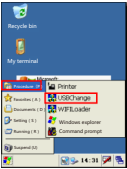


Picture 9

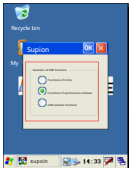


Picture 10

5) Selection of USB functions, click "Procedure" => "USBChange" (Picture 12) to select USB functions, among them three USB functions can be selected based on users' requirements. Take operating module of "U disc functions" for example, users can click the left small circle around this function to complete the option, which is similar for "synchronous software function" and "USB network function". However, before using "synchronous software function", installation of synchronous software on computer is needed before operation of synchronous function.

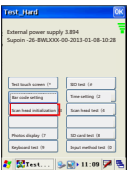


Picture 11

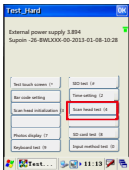


Picture 12

6) Scanning head initiation (Picture 13) and test scanning head (Picture 14), before scanning, scanning head initiation is necessary. Double click scanning head initiation to check whether it can scan normally. Click start can conduct automatic scanning or manual scanning by pressing scan key.



Picture 13 Scanning initiation

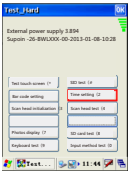


Picture 14 Test Scan

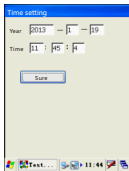


Picture 15 Automatic Scan

**Note:** If scanning head initiation fails, the case that no light showing in the scanning head may be caused by the problematic scanning hardware or there is red light but unable to scan code, for this case you may exit the procedure and restart it, success of initiation can basically guarantee normal scanning.



Picture 19



Picture 20 Time setting

9) Keyboard test (Picture 21), double click keyboard test, and enter any key to check whether the key value displaying on screen is correct and operation is normal.



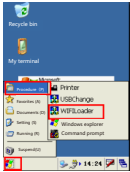
Picture 21 Keyboard test

8) Time setting (Picture 19), double clicking time setting can change time into corresponding year and time, after time setting please click (Picture 20) sure.

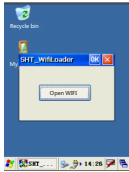
4.2 WIFI setting

1) Wifi on-off setting (Picture 22), click the left bottom of the terminal, procedure==> WIFILoader, open WIFI and click OK key (Picture 23), see whether WIFI is open at the red rectangle downward the tastbar of the terminal. To close WIFI, please press X button. WIFI has already opened (Picture 24).

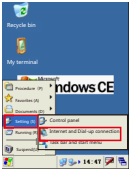




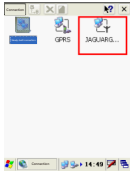
Picture 22 Wifi on-off setting



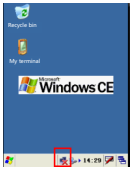
Picture 23 Wifi on setting



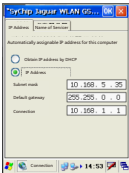
Picture 25 Wifi setting



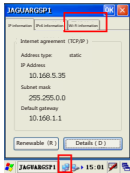
Picture 26 IP setting



Picture 24 Wifi on



Picture 27 Designate static or dynamic IP



Picture 28 Network connection

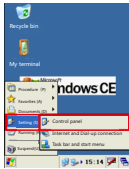
2) Wifi-on setting connection, click “set—network and dial connection” (Picture 25) on left bottom of the terminal, double click medium icon (Picture 26) to set IP. IP setting can divide into two types, namely, automatically obtain IP address and set static IP based on requirements (designate a specific IP address) see (Picture 27), click OK key for sure, double click the small computer (Picture 28) under taskbar and choose “wireless information” , then connect to desired SSID (net name) to be connected, double click sure to be connected, see (Picture 29).



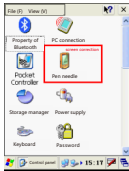
Picture 29 Network has connected

4.3 Relevant procedure setting of control panel

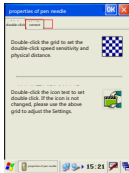
1) Screen correction, volume setting, wifi on-off status by default, automatic dormancy and dormancy forbidding all can be set by control panel, click (Picture30) to enter control panel to set correspondingly. 1: screen correction see (Picture 31-picture 33), click “cross” until the icon is back to the original center to achieve successful screen correction, press R key to exit, click OK key for confirmation, 2: double click “volume key” to conduct corresponding setting, volume increases from left to right, 3: double click Supoin PDA for corresponding setting, such as “Wifi on-off status by default, automatic dormancy, dormancy forbidden, automatic dormant time (value in seconds ), after setting the terminal shall sleep automatically at setting time, the screen goes black, (for awakening, just slightly press power key)” and other relevant settings(Picture 38), restart the terminal after setting confirmation.



Picture 30 Enter control panel



Picture 31 Screen correction



Picture 32 Screen correction



Picture 33 Screen correction



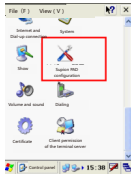
Picture 34 Screen correction



Picture 35 Volume setting



Picture 36 Volume setting



Picture 37 Supoin PDA setting



Picture 38 Supoin PDA setting

## FCC STATEMENT

1. This device complies with Part 15 of the FCC Rules. Operation is subject to the following two conditions:

(1) This device may not cause harmful interference.

(2) This device must accept any interference received, including interference that may cause undesired operation.

Changes or modifications not expressly approved by the party responsible for compliance could void the user's authority to operate the equipment.

NOTE: This equipment has been tested and found to comply with the limits for a Class B digital device, pursuant to Part 15 of the FCC Rules. These limits are designed to provide reasonable protection against harmful interference in a residential installation.

This equipment generates uses and can radiate radio frequency energy and, if not installed and used in accordance with the instructions, may cause harmful interference to radio communications. However, there is no guarantee that interference will not occur in a particular installation. If this equipment does cause harmful interference to radio or television reception, which can be determined by turning the equipment off and on, the user is encouraged to try to correct the interference by one or more of the following measures:

- Reorient or relocate the receiving antenna.

- Increase the separation between the equipment and receiver.

- Connect the equipment into an outlet on a circuit different from that to which the receiver is connected.

- Consult the dealer or an experienced radio/TV technician for help.