

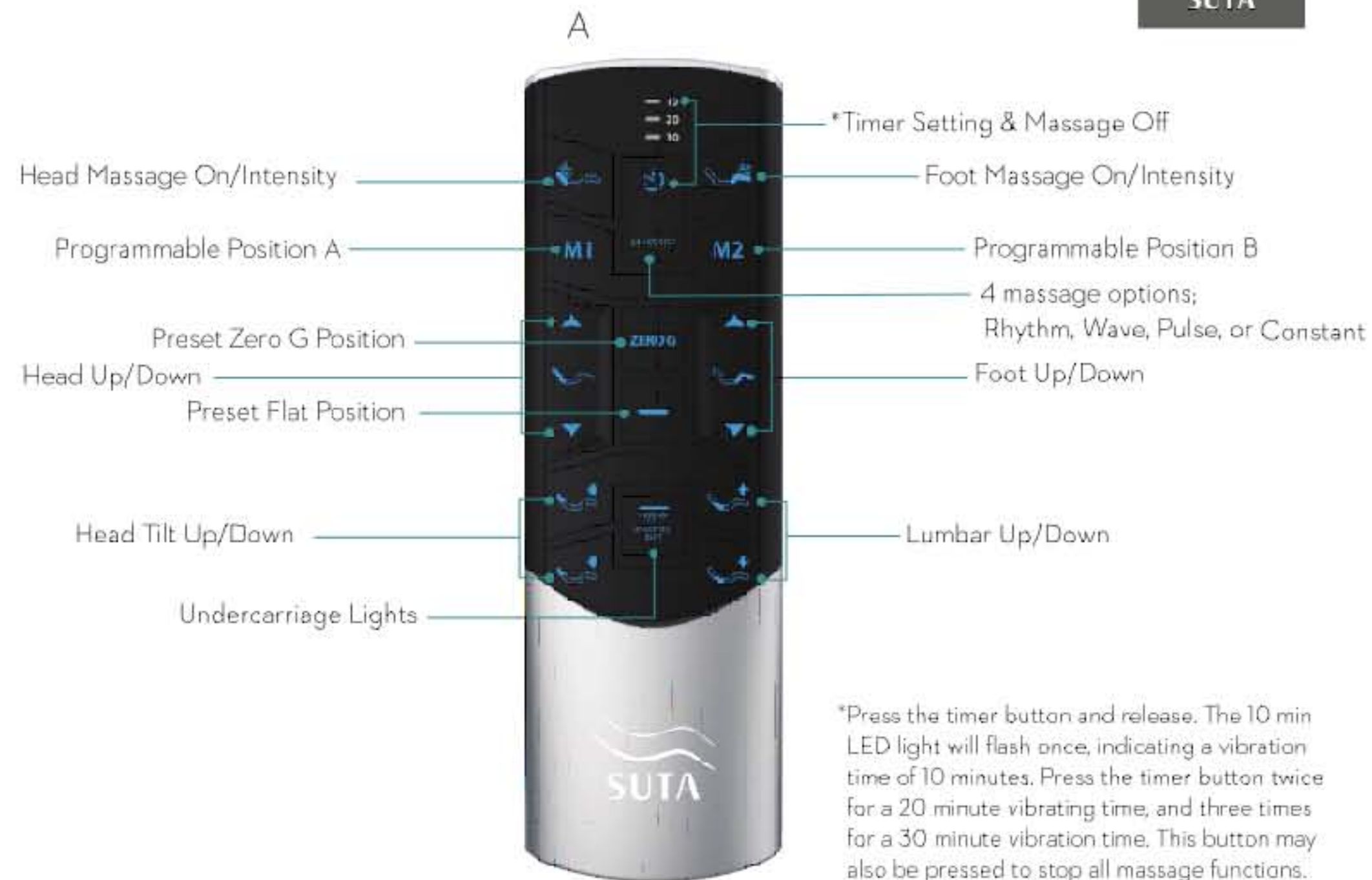
REMOTE CONTROL

Overview

All of the functions of the bed can be operated with the remote control. The remote control comes with pre-programmed buttons that will automatically adjust when pressed, or you can manually control adjustments using the arrow buttons on the remote control. See the diagram to the right (image A) for a complete list of remote control functions.

Remote Control Battery Installation:

Remove the battery cover on the back side of the remote control. Insert the AAA batteries (included) as shown.



REMOTE CONTROL

Custom Programming Buttons

The ZG, MEMORY 1 and MEMORY 2 buttons, FLAT BUTTON can be custom programmed to positions of your choosing. To program the remote preset buttons:

1. Adjust the bed to the desired position
2. Press and hold the TIMER/ALL OFF button for approximately three (3) seconds until the lights on the remote control start flashing.
3. Release the TIMER/ALL OFF button and within two (2) seconds press the ZG, MEMORY A or MEMORY B buttons. The lights on the remote control will stop flashing and the selected button is updated to the new position.



Memory Position

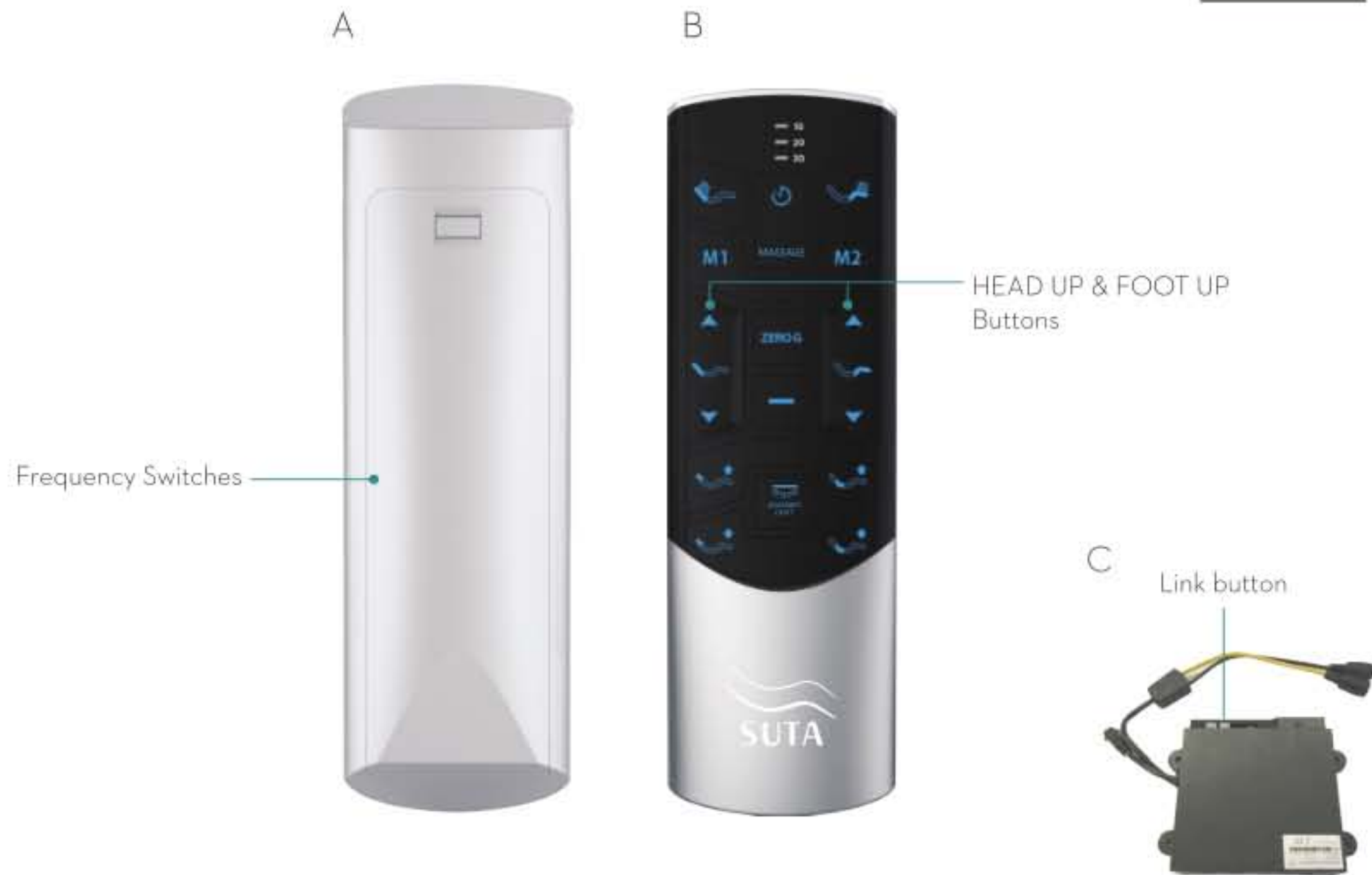
Zero G / Flat

NOTE:
The four buttons shown here are pre-programmed with the manufacturers suggested bed positions. No programming is necessary by the user unless modified bed positions are desired.

REMOTE CONTROL

Pairing Setting

1. Remove the power cord from the wall outlet before pairing.
2. Press and hold the Link button located underneath the bed on the control box until the LED indicator light starts flashing (see image C).
3. Press and hold the HEAD UP and FOOT UP buttons simultaneously (see image B) on the remote control until the remote control lights start flashing. When flashing, release the two buttons. The lights will continue flashing until a successful sync with the control box is achieved. The frequency setting is now updated.
4. If the remote does not sync, repeat the process and check the remote control batteries.



REMOTE CONTROL

Sync-able Control

1. Connect the sync cable with control boxes for 2 beds before using this feature.
2. Plug sync cable into the "Synchro Cntl" on the control box for both beds.
3. Move the side button to the "L" position, the remote will only control the left bed in separately, move the side button to the "R" position, the remote will only control the right bed in separately, move the side button to the "I" position, the remote will control both the right and left beds in simultaneously.



FCC WARNING

This device complies with Part 15 of the FCC Rules. Operation is subject to the following two conditions:

- (1) This device may not cause harmful interference, and
- (2) this device must accept any interference received, including interference that may cause undesired operation.

NOTE 1: Any changes or modifications to this unit not expressly approved by the party responsible for compliance could void the user's authority to operate the equipment.