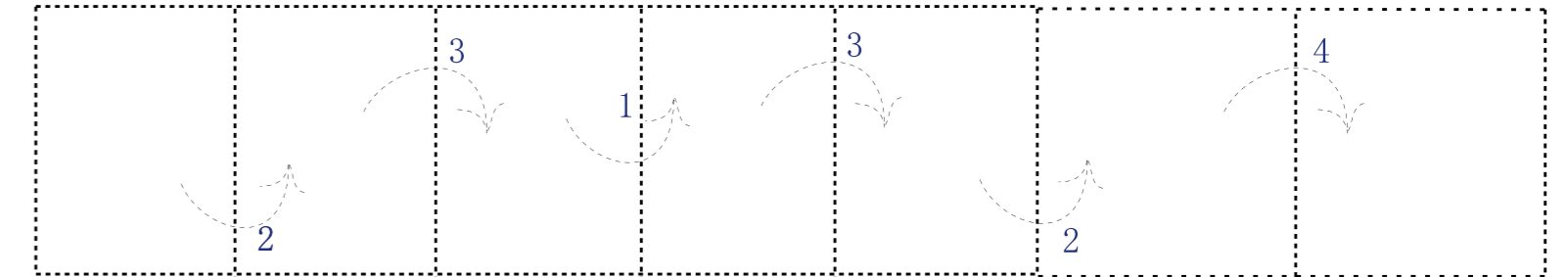


KS8223 User Guide

材质：铜版纸120g

折法：



90mm

正面

140mm

General troubleshooting guidelines:

The following faults are common faults. For the rest of the failure, please refer to the company after-sales service content in order to obtain quality service.

- Blank display**
Check whether the power cable is connected to the AC output port on the POS or not.
Check whether the power adapter's output port is connected to the POS or not.
- Printer does not work:**
Check whether the printing paper box is closed or not.
Check whether using the appropriate printing paper and is correctly loaded.
Make sure to use the appropriate paper and install it correctly on the printer.
- Magnetic low reading rate**
Check whether the magnetic card has been polluted by dirt or other pollutants. If so, please replace to a new one.
Please use cleaning card to clean the POS's magnetic header.
- Unable to read IC card**
Check whether the IC card is inserted fully into card slots in the right direction or not.
Check whether there is any dirt or other pollutants on surface of the metal contact point of IC card. If so, please use cleaning card to clean the contact point.
- The network connection failed**
Check the network is connected successfully or not.
Check whether the network configuration meets the installation requirements or not.
- GPRS communication failed.**
Check whether the SIM card is installed correctly or not.
Check whether the SIM card has activated the GPRS service or not.

This product's toxic and hazardous substances name and content of the table

Name of parts	Toxic and Hazardous Materials or Elements					
	Pb	Hg	Cd	Cr 6+	PBBs	PBDEs
Circuit board components	X	O	O	O	O	O
Head assembly	X	O	O	O	O	O

O: means that the toxic and hazardous substances in the parts of all homogeneous materials in the content of SJ/T11363-2006 specified in the limited requirements below.
X: means the toxic and hazardous substances at least in the part of a homogeneous material in the content of more than SJ/T11363-2006 limit requirements. However, the content is beyond (by "mark" components because there is no mature Instead of

The products that exceed the service life of environmental protection shall be reclaimed according to the provisions of the Administrative Measures on the Control of Electronic Information Products and shall not be discarded at will

Product Warranty Card

Product name: Smart POS Terminal
Product model: KS8223

Warranty:

- SZZT will provide you with quality after-sales service.
- If the damage caused by human factors, SZZT will take repair maintenance costs.
- Please keep this card, the company will be based on this warranty.

Contact information:

Headquarters: SZZT Industrial Park, NO.3 Tongguan Road, Guangming New District, Shenzhen, Guangdong, China.
Zip code: 518132
Customer Service Hotline: +86- 400 8810 888
Fax: +86-755-26490099
Website: www.szzt.com.cn
SZZT Electronics Co., Ltd. reserves the right to interpret the warranty card.

Precautions

Safety warning

- Please insert the AC power plug into the corresponding outlet on the power adapter.
- Do not use the terminal in any potentially explosives environment.
- Non-professional and technical personal do not dismantle the terminal's power adapter.
- Changing the battery with wrong model may leads to explosion.

Safety instructions

- Avoid installing or using the terminal during thunder and lightning environment, otherwise user may be in danger of lightning strikers.
- Avoiding using the terminal if found any abnormal smell, overheat or smoke, please shut-down and power-off the terminal immediately.

Usage specifications

- During the installation and operation of the terminal, please make sure only using the standard approved power socket with stable voltage, avoiding sharing the circuit with frequently starting and electricity frequently changing equipments.
- Avoiding any liquid or objects sprinkled into the terminal. if so, please shut-down the terminal immediately, cut-off the power, unload the battery, dry the liquid and remove the objects.
- Avoiding hard pressing, vibration, shaking and knocking on the terminal.
- Operate the terminal in a dry, ventilated and clean environment, avoiding direct sunlight, keeping the working temperature at 5-35 centigrade and working humidity at 20%-80%.

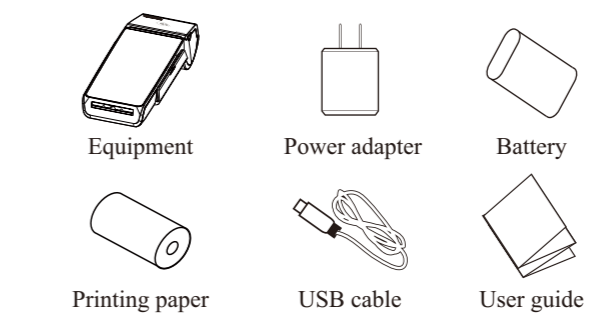
- Maintain the terminal regularly, including: function tests, whole terminal external cleaning, printer and keypad cleaning.
- Using the proper printing paper for the terminal.
- When there's problem persists after you have followed troubleshooting guidelines, please contact with SZZT for after-sales support and further information. do not open and maintain the POS by yourself.
- When there's a safety problem, for example abnormal smell, abnormal noise, electric leakage, etc. please power-off the terminal immediately and report to the terminal management department to solve the problems.

Statement

SZZT is not responsible for any operation and behaviors shown as below:
The operating system only supports official upgrades, if the user installs unofficial system, the risks and losses resulted in security will be borne by the user (There may be risks: user information is stolen, automatically send text messages, locate your location, etc.)
Terminal damaged by improper operation and maintenance which did not comply with the user guide's requirements.

Unpacking check

Open the packing to check the POS and accessories as shown in below.
For the actual packing content, please refer to the packing list.



Product packing list

- 1 Mainframe
- 1 Power adapter
- 1 Battery
- 1 User guide
- 1 Micro USB Cable
- 1 Thermal printer
- Others



Inspector _____

KS8223 User Guide

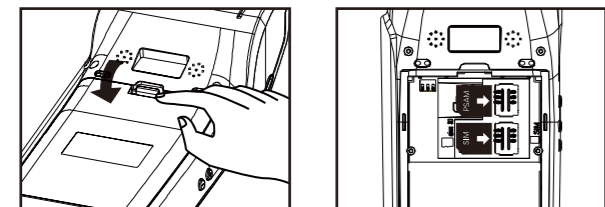


SZZT Electronics CO., LTD
SZZT Industrial Park, NO.3 Tongguan Road,
Guangming New District, Shenzhen, Guangdong, China.
Post Code:518132
Contact Number:+86-(0)755-81728888
Email:marketing@szzt.com.cn
Website:Http://www.szzt.com.cn
Version:V1.0

背面

SIM card /Battery/ PSAM card installation instruction

When using the POS for the first time, you may need to install PSAM card, SIM card or TF card. please follow the below instructions to operate:
place the POS on a soft and clean surface to prevent scratching.



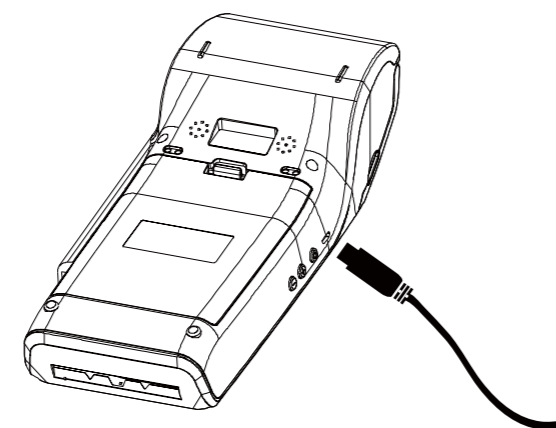
1. Open the battery cover.
2. According to the illustration to insert SIM and PSAM card.
3. Load the battery and close the cover.

Note: please make sure the missing angel on card is in the right direction responding to the missing angel on card slot.

Start up/shut down:

Startup: press the power button until LCD displays logo, then the POS is ready.
Shut down: Press power button until LCD displays three modes: Shutdown, Restart, Flight mode, select "Shutdown" to shutdown POS

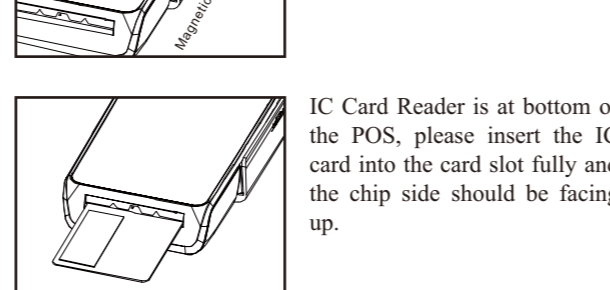
Interface connection



Connect the output port of the power adapter to the POS power connector location. Please use the dedicated serial cable to connect

Card reader operation instructions

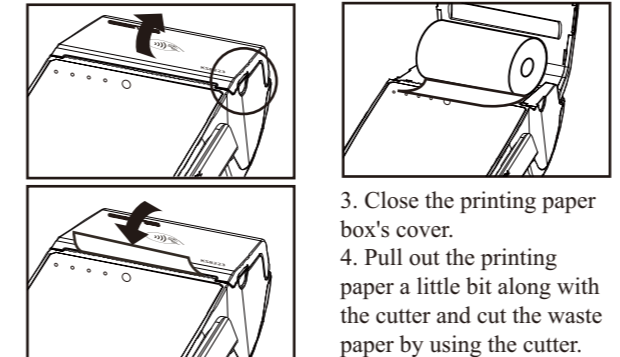
Magnetic card reader is on the right side of the POS, please swipe the magnetic card in a steady speed and the magnetic side should be facing the LCD.



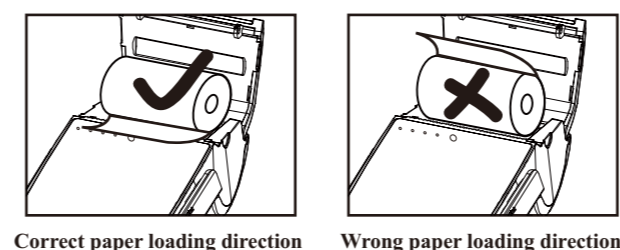
Note: the magnetic reader and the IC card reader is easily stained with dirt after use the POS for a long time, please use the cleaning magnetic card or IC card to clean the dirt on time.

Loading printing paper roll

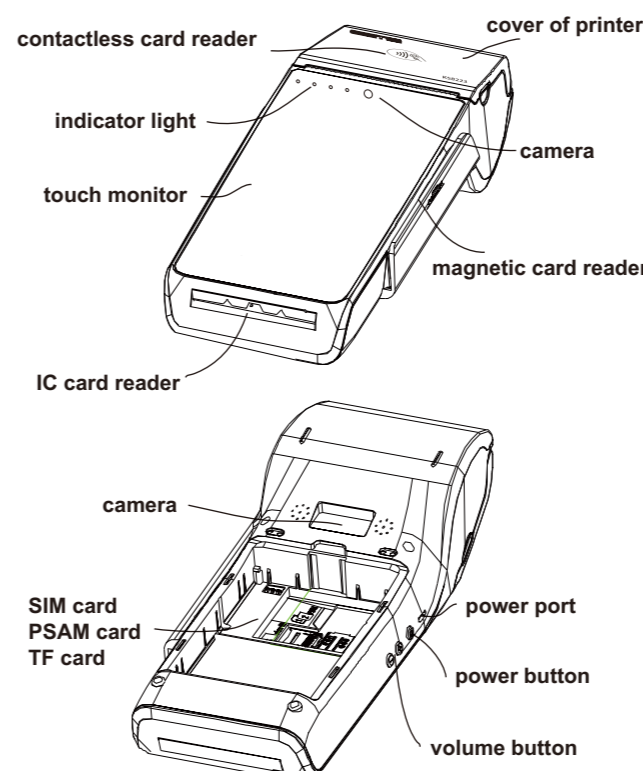
1. As shown below, please pull up the printing paper box's cover to open it.
2. Load the printing paper roll into the printing paper box in the right direction as shown below and leave some blank paper at the cutter.



Note: please make sure to load the printing paper in correct direction. otherwise it will lead to printing failed.



Product description



Product Certification



Copyright

This User Guide is issues by SZZT Electronics Co Ltd. SZZT enjoys exclusive rights reserved according to the copyright law. Without the prior consent of the copyright owner, anyone can not engage in copying, additions and deletions, excerpts, copying or imitation of part of the this manual or all. The contents of this User Guide are only used to describe the use of the products manufactured by SZZT. About the contents of this guide, SZZT Electronics Co Ltd works without any express or implied warranties or guarantee liability.

Warning

For any problem or damage caused the accessories which is not provide by SZZT or approved by SZZT. SZZT will not take any responsibility. Anyone has no right to modify or change the product without the consent of the SZZT Electronics Co Ltd.
Due to the update of products, some of the details of this document may be inconsistent to the product, please in kind prevail. SZZT Electronics Co Ltd keep the interpretation right of this document and reserves the right to amend this specification without prior notice.

FCC RF Exposure Information and Statement

This device meets the government's requirements for exposure to radio waves. The guidelines are based on standards that were developed by independent scientific organizations through periodic and thorough evaluation of scientific studies. The standards include a substantial safety margin designed to assure the safety of all persons regardless of age or health. The SAR limit of USA (FCC) is 1.6 W/kg averaged over one gram of tissue for body, and 4 W/kg averaged over ten gram of human's hands. Device types: Smart wireless pos (FCC ID: 2AL7RKS8223) has also been tested against this SAR limit. SAR information on this and other pad can be viewed on - line at <http://www.fcc.gov/oet/ea/fccid/>. Please use the device FCC ID number for search. This device was tested simulation typical 5mm for body and 0 mm to hands. To maintain compliance with FCC RF exposure requirements, use accessories should maintain a separation distance between the user's bodies mentioned above, the use of belt clips, holsters and similar accessories should not contain metallic components in its assembly, the use of accessories that do not satisfy these requirements may not comply with FCC RF exposure requirements, and should be avoided.

FCC Warning

This device complies with Part 15 of the FCC Rules. Operation is subject to the following two conditions:

(1) This device may not cause harmful interference, and (2) this device must accept any interference received, including interference that may cause undesired operation.

NOTE 1: This equipment has been tested and found to comply with the limits for a Class B digital device, pursuant to part 15 of the FCC Rules. These limits are designed to provide reasonable protection against harmful interference in a residential installation. This equipment generates, uses and can radiate radio frequency energy and, if not installed and used in accordance with the instructions, may cause harmful interference to radio communications. However, there is no guarantee that interference will not occur in a particular installation. If this equipment does cause harmful interference to radio or television reception, which can be determined by turning the equipment off and on, the user is encouraged to try to correct the interference by one or more of the following measures:

- Reorient or relocate the receiving antenna.
- Increase the separation between the equipment and receiver.
- Connect the equipment into an outlet on a circuit different from that to which the receiver is connected.
- Consult the dealer or an experienced radio/TV technician for help.

NOTE 2: Any changes or modifications to this unit not expressly approved by the party responsible for compliance could void the user's authority to operate the equipment.