



Safety information for wireless handheld phones

Changing the covers





Safety information

Use of your phone is subject to safety rules designed to protect the user and his or her environment.

For body worn operation, this phone has been tested and meets FCC RF exposure guidelines when used with an accessory that contains no metal and that positions the handset a minimum of 1.5 cm from the body. Use of other accessories may not ensure compliance with FCC RF exposure guidelines.

Exposure to Radio Frequency Signals

- Your wireless handheld portable telephone is a low power radio transmitter and receiver. When it is ON, it receives and also sends out radio frequency (RF) signals.
- In August, 1996, the Federal Communications Commissions (FCC) adopted RF exposure guidelines with safety levels for handheld wireless phones. Those guidelines are consistent with the safety standards previously set by both U.S. and international standards bodies:

ANSI C95.1 (1992)^(*)
 NCPR Report 86 (1986)^(*)
 ICNIRP (1996)^(*)

- Those standards were based on comprehensive and periodic evaluations of the relevant scientific literature. For example, over 120 scientists, engineers, and physicians from universities, government health agencies, and industry reviewed the available body of research to develop the ANSI Standard (C95.1).
- The design of your phone complies with the FCC guidelines (and those standards).

Phone Operation

- Normal position: hold the phone as you would any other telephone with the antenna pointed up and over your shoulder.
- Tips on efficient operation: for your phone to operate most efficiently; do not touch the antenna unnecessarily when the phone is in use. Contact with the antenna affects call quality and may cause the phone to operate at a higher power level than otherwise needed.

^(*) American National Standards Institute; National Council on Radiation Protection and Measurements; International Commission on Non-Ionizing Radiation Protection.



Safety information

Driving

- Check the laws and regulations on the use of wireless telephones in the areas where you drive. Always obey them. Also, if using your phone while driving, please:
 - Give full attention to driving, driving safely is your first responsibility;
 - Use hands-free operation, if available;
 - Pull off the road and park before making or answering a call if driving conditions so require.

Electronic Devices

- Most modern electronic equipment is shielded from RF signals. However, certain electronic equipment may not be shielded against the RF signals from your wireless phone.
- Some phone accessories allow to reduce the radiation interferences of the phone. Please contact your distributor.

Pacemakers

The Health Industry Manufacturers Association recommends that a minimum separation of six (6") inches be maintained between a handheld wireless phone and a pacemaker to avoid potential interference with the pacemaker. These recommendations are consistent with the independent research by and recommendations of Wireless Technology Research.

Persons with pacemakers:

- Should ALWAYS keep the phone more than six inches from their pacemaker when the phone is turned ON;
- Should not carry the phone in a breast pocket;
- Should use the ear opposite the pacemaker to minimize the potential for interference;
- If you have any reason to suspect that interference is taking place, turn your phone OFF immediately.



Safety information

Hearing Aids

Some digital wireless phones may interfere with some hearing aids. In the event of such interference, you may want to consult your service provider.

Other Medical Devices

If you use any other personal medical device, consult the manufacturer of your device to determine if they are adequately shielded from external RF energy. Your physician may be able to assist you in obtaining this information.

Turn your phone OFF in health care facilities when any regulations posted in these areas instruct you to do so. Hospitals or health care facilities may be using equipment that could be sensitive to external RF energy.

Vehicles

RF signals may affect improperly installed or inadequately shielded electronic systems in motor vehicles. Check with the manufacturer or its representative regarding your vehicle. You should also consult the manufacturer of any equipment that has been added to your vehicle.

Posted Facilities

Turn your phone OFF in any facility where posted notices so require.

Aircraft

- FCC regulations prohibit using your phone while in the air. Switch OFF your phone before boarding an aircraft.

Blasting Areas

- To avoid interfering with blasting operations, turn your phone OFF when in a "blasting area" or in areas posted: "Turn off two-way radio". Obey all signs and instructions.

Potentially Explosive Atmospheres

- Turn your phone OFF when in any area with a potentially explosive atmosphere and obey all signs and instructions. Sparks in such areas could cause an explosion or fire resulting in bodily injury or even death.



Safety information

- Areas with a potentially explosive atmosphere are often but not always clearly marked. They include fueling areas such as gasoline stations; below deck on boats; fuel or chemical transfer or storage facilities; vehicles using liquefied petroleum gas (such as propane or butane); areas where the air contains chemicals or particles, such as grain, dust, or metal powders; and any other area where you would normally be advised to turn off your vehicle engine.

For Vehicles Equipped with an Air Bag

- An air bag inflates with great force. DO NOT place objects, including both installed or portable wireless equipment, in the area over the air bag or in the air bag deployment area. If in-vehicle wireless equipment is improperly installed and the air bag inflates, serious injury could result.

Electrical Safety

- Only use the appropriate chargers recommended in the manufacturer's catalog. Using another charger may prove dangerous and could invalidate the warranty of your phone.
- The main power socket should be easily accessible.
- Make sure that the main voltage corresponds to the level marked on the charger identification plate.

General Precautions

- Do not try to open your phone and repair it yourself. The manufacturer cannot be held liable for any resulting damage.
- Any work done by an unqualified and unauthorized person will invalidate your warranty.
- Do not use your phone in humid places (bathroom, swimming pool, etc.). Protect it from splashing water and other liquids.
- Do not expose your phone to extreme temperatures.



Safety information

- Keep your phone out of reach of small children. Do not allow them to play with it, it is not a toy.
- Only use your phone with original accessories. Failure to comply with these rules will invalidate your warranty.
- Remember to disconnect the charger before removing the battery.
- The physical and chemical processes used in rechargeable batteries mean that temperature limits must be followed during rapid charging. Your terminal automatically protects the batteries from extreme temperatures.
- If the phone is disconnected from the battery for an extended period of time, it will lose the time and the recorded voice messages.

Emergency Calls

IMPORTANT

- This phone, like any PCS phone, operates using radio signals, PCS and landline networks, and user-programmed functions. As a consequence a connection in all conditions cannot be guaranteed. Therefore you should never rely solely upon any PCS phone for essential communications (e.g. medical emergencies).

WARNING




- The manufacturer cannot be held liable for any failure to comply with the above recommendations or for any misuse.
- The software program developed by SAGEM SA remains the exclusive property of SAGEM SA. It is therefore highly prohibited to modify, translate, de-compile or disassemble this software program or any part thereof.
- SAGEM SA may not be held responsible for the contents of messages, software or objects downloaded and/or for any direct or indirect consequential damage to the phone user or the phone itself.



Safety information

- To make or receive any calls, this phone must be switched on and in service area with adequate PCS signal strength. Emergency calls may not be possible on all PCS networks or when certain network services and/or phone features are in use. Check with local Service Providers.
- When making an emergency call, remember to give all the necessary information as accurately as possible. Remember that your PCS phone may be the only means of communication at the scene of an accident - do not terminate the call until given permission to do so.
- If certain features are in use (such as Keyguard), you may first need to turn those features off before you can make an emergency call. Consult this manual and your local PCS Service Provider.

Emergency Calling

- If the phone is not on, press .
- Key in emergency number for your present location (e.g. 911 or other official emergency number).
- Press .
- If you dial 911  during a call, the phone terminates the current call and attempts to make a call to the emergency number 911.

FCC/INDUSTRY CANADA NOTICE

Your phone may cause TV or radio interference (e.g when using telephone in close proximity of receiving equipment). The FCC/INDUSTRY CANADA can require you to stop using your telephone if such interference cannot be eliminated. If you need assistance, contact your local dealer.

This device complies with parts 15 and 68 of the FCC rules. Operation is subject to the condition that this device does not cause harmful interferences.



Changing the covers

To take cover off



Hold front of phone firmly whilst freeing the back cover, then pull the back cover away from the very bottom of the phone.



Changing the covers

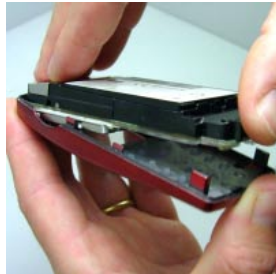
5



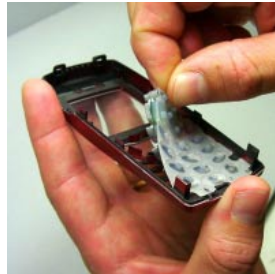
6



7



8





Changing the covers

To put cover back on





Changing the covers

5



6



7





SAGEM SA
Mobile Phones Division

Le Pontant de Paris
27, rue Leblanc - 75512 PARIS CEDEX 15 - FRANCE
Société anonyme à directoire et conseil de surveillance
au capital de 36 044 360 € - 562 082 909 RCS PARIS

