

SALTO GEO Cylinder | the next generation of electronic cylinder lock

Fully integrated with the SALTO XS4 platform, GEO is a versatile, cost effective solution and its compact size and easy installation makes it the ideal electronic locking system for almost any type of door.

European cylinder - GxEx



User Manual

INDEX

PRODUCT DESCRIPTION	3
WHATS ON THE BOX	3
ACCESSORIES	4
SALTO GEO RANGE	4
MODELS	4
DIMENSIONS	4
CERTIFICATIONS	5
Declaration of Conformity CE	5
Protection against access to hazardous areas, resistance against ingress of foreign particules and detrimental entry of water	5
Mechanical certifications against vandalisme	5
Fireproof certifications	5
TECHNICAL DATA	5
ACCES CONTROL FEATURES	6
OPENING MODES	6
OPERATION OF THE CYLINDER	6
INSTALLATION	7
PROGRAMMING	9
BATTERIES	9
Low battery status.	9
Battery failure.	9
Change the batteries	10
SALTO GEO SIGNALS	11
Access granted	11
Card rejection	11
Access time out	11
Low battery status	11
Battery changed (reset of the electronics)	12
Access granted + Toggle (ROM or RW systems)	12
End Toggle (ROM or RW systems)	13
Gear error	13
Security error	13

PRODUCT DESCRIPTION

SALTO GEO cylinder is a battery operated electronic cylinder that brings all the advantages and benefits of an access control without wiring the door reducing installation costs and allowing you to control and manage virtually anykind of door.

The SALTO GEO cylinder European profile is specially designed to fit most Euro profile doors that are equipped with a European profile cylinder mortise lock.

A wire free fully stand alone electronic access control solution, it is suitable for installation in almost every type of wooden door including antique or listed wooden doors, metal and metal framed doors and glass doors.



The key is always to be stored securely so that it is accessible only to the authorised person.

If a key gets lost, the electronic cylinder is to be replaced immediately or, by changing of the codification put to a new coding respectively to block/delete the coding of the lost key.

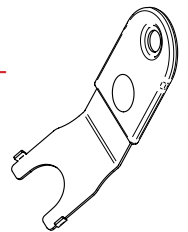
WHATS ON THE BOX

When you purchase a SALTO GEO electronic Cylinder you get:

- SALTO GEO electronic cylinder
- 1 lithium battery CR2type
- Installation guide
- 1 M5 screw to fix the cylinder onto the mortise lock
- 1 Knob blocking screw



For the mantainance of the cylinder in order to perform replacemnt of batteries or the installation of double knob cylinders, electric swith cylinders SALTO Recommends to purchase the SALTO Geo Installation tool (SP220764) sold separately.

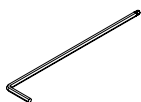


ACCESSORIES

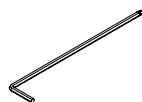
- SALTO 2,5 mm Allen key for SALTO GEO to remove the thumbturn. (SP301585)
- SALTO 2 mm Allen key for SALTO GEO to remove the knob. (SP3030577)
- SALTO CR2 battery for SALTO GEO cylinders. (SP301582-10)
- SALTO Geo cylinder grip A. (SALTOGEOGRIPAx)
- SALTO Geo cylinder grip H. (SALTOGEOGRIPHx)
- SALTO euro cylinder measuring key for installers (PZ). (SP201587)



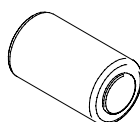
The product should not be modified in any way except in accordance with those modifications described in the instructions



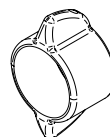
SP301585



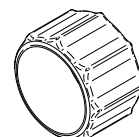
SP3030577



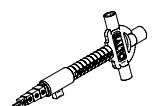
SP301582-10



SALTOGEOGRIPA



SALTOGEOGRIPH



SP201587

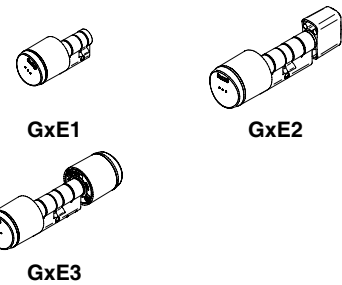
SALTO GEO RANGE

Models

E1 = Half Euro profile cylinder.
GxE11xxxx

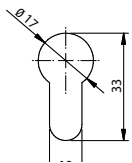
E2 = Euro profile cylinder with thumbturn.
GxE21xxxx

E3 = Euro profile double cylinder, double knob.
GxE31xxxx

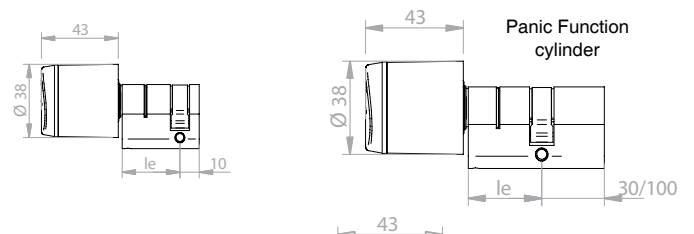


Dimensions

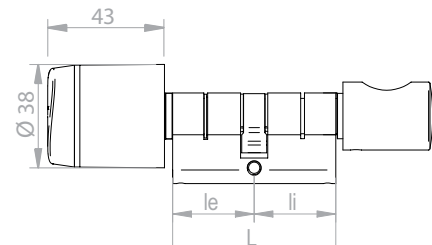
Profile cylinder PZ



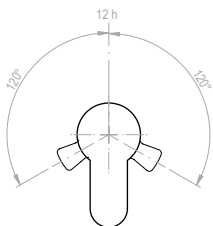
E1 = Half Euro profile cylinder.
GxE11xxxx



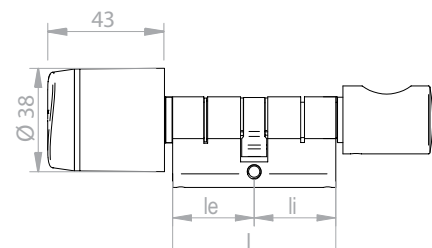
E2 = Euro profile cylinder with thumbturn.
GxE21xxxx



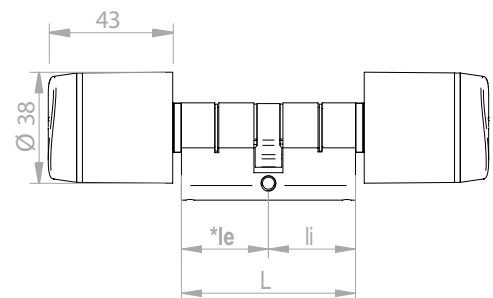
Panic Function



E2 = Euro profile cylinder with thumbturn
Antipanic function.
GxE21xxxxA



E3 = Euro profile double cylinder, double knob.
GxE31xxxx



- The cylinder has a mechanism to ensure that the cylinder cam resets to a position where it doesn't interfere in the lock operation.
- The cam's position is corrected from 12 h +/- 120° to 12 h +/- 120°.
- The panic function requires a cylinder minimum interior length (li) of 35mm.
- The panic function is not compatible with double reader cylinder.

CERTIFICATIONS

Declaration of Conformity CE

Use of radio frequency spectrum
ETSI EN 302 291-1 V1.1.1 (2005-07)
ETSI EN 302 291-2 V1.1.1 (2005-07)

Electromagnetic Compatibility
ETSI EN 301 489-1 (2011-09)
ETSI EN 301 489-3 (2002-08)

Security requirements
EN 60950-1 (2007)

Following the provisions of the directive 2004/108/CE (Electromagnetic Compatibility) and the directive 2006/95/CE (Low Voltage).

Protection against access to hazardous areas, resistance against ingress of foreign particules and detrimental entry of water

IP protection: IP56

Mechanical certifications against vandalisme

EN1303
SKG***

TECHNICAL DATA

Current required: 1 Lithium standard battery CR2

Environmental conditions: -20°C / 60°C

Number of openings: Up to 40,000 on 1 battery

Access control systems:

ROM System - Software required SALTO Pro Access ROM
RW System - Software required SALTO Pro Access RW or HAMS RW

ACCES CONTROL FEATURES

	ROM System	R&W System
Maximum number of user per door	1000	4000000
Maximum number of door per system	16000	64000
Maximum events on lock audit	680	1000
Timezones	30	256
Timeperiods	20	256
Calendars in system	4	256
User groups	unlimited	unlimited
Zones in System	unlimited	unlimited
Management software	ProAccess ROM	ProAccess HAMS (available SQL)

Opening modes

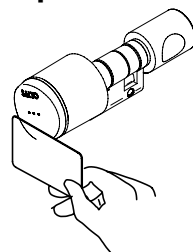
Standard: locked at all times. Need of a valid card to get access.

Automatic openings: 8 pairs of “hands free”(no card needed to access) timed lock and unlocks per day subject to calendar and time periods (ROM and RW systems only).

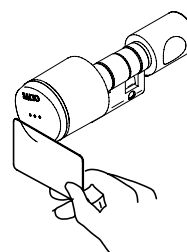
Toogle: present valid card to lock, present valid card to unlock (ROM and RW systems).

Timmed Toogle: present valid card to lock, present valid card to unlock depending on schedules to switch between standard mode and Toogle mode (ROM and RW systems).

Operation of the cylinder



Present a valid card



Turn the knob to retrieve the latch and deadbolt

Timezones

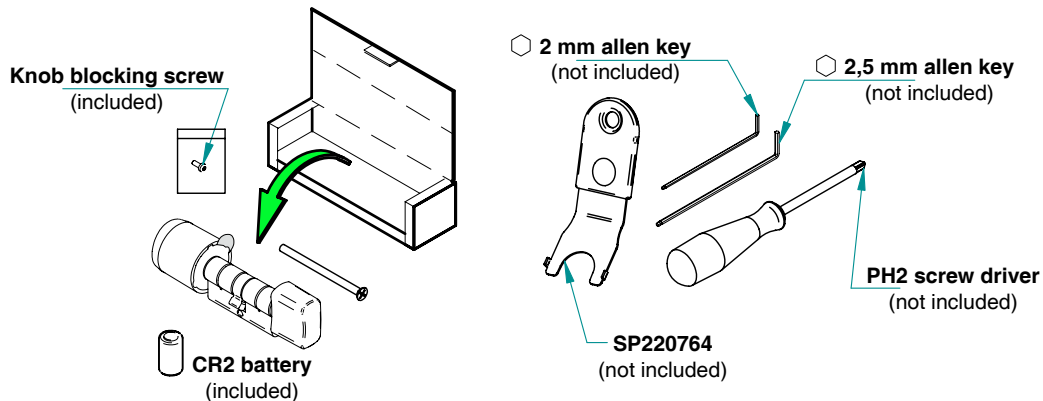
Each user can be assigned to a calendar and a time table consists of up to 8 different time intervals with a resolution of 10 minutes assigned to each day of the week. You can also distinguish between holidays, special days and working days.

Event Auditor

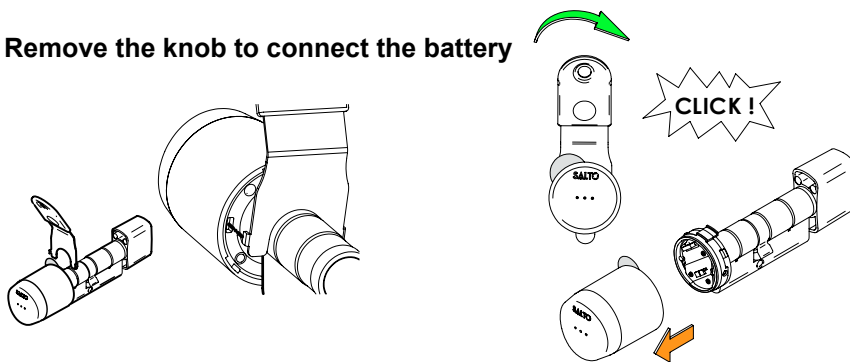
- Authorized access events auditor registration, denied access events auditor registration, system maintenance events auditor registration (low battery, PPD connection, ...) and automatic actions events auditor registration (automatic opening, ...)
- Each event is logged: Event type, user, date and time of the event.
- Permanent events refistration. Non-volatile memory of the last X events (see table).

INSTALLATION

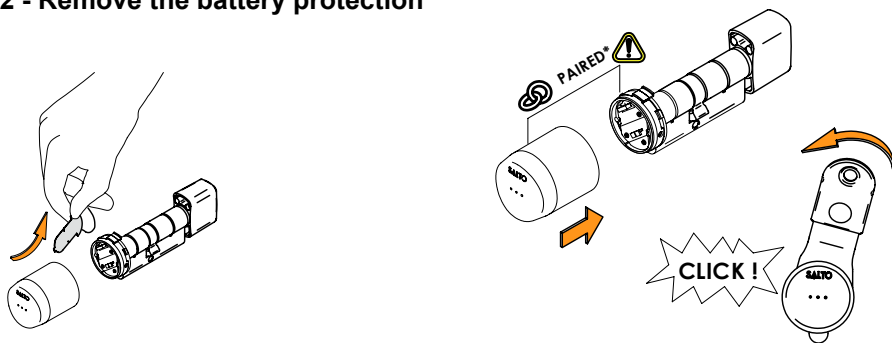
1 - unpack



2 - Remove the knob to connect the battery

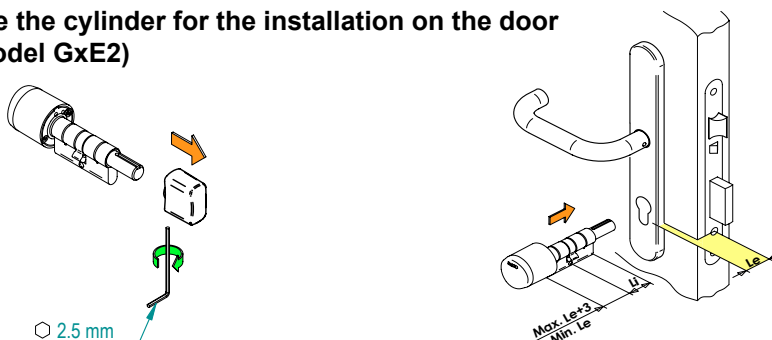


2 - Remove the battery protection



Important: the knob is uniquely paired to the cylinder, and will not work if you switch in a different SALTO knob.

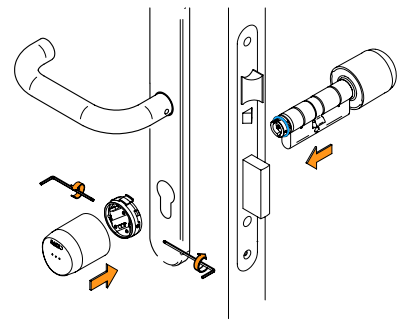
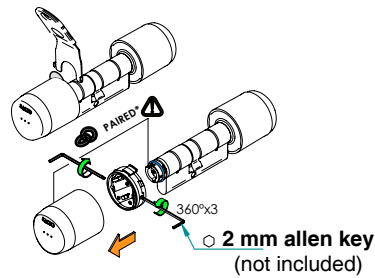
3 - Prepare the cylinder for the installation on the door (for model GxE2)



INSTALLATION

3 - Prepare the cylinder for the installation on the door (for model G9x3)

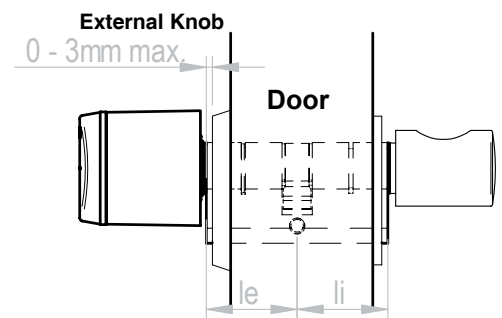
Remove one of the knobs in order to be able to fit the cylinder



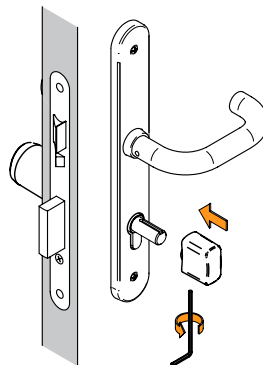
For a correct installation



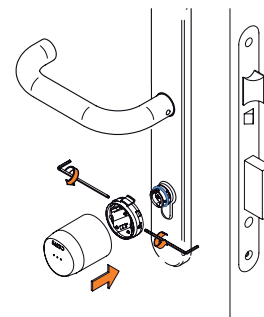
For a correct installation the body need to excel 3mm from the door surface



4 - fix it to the door

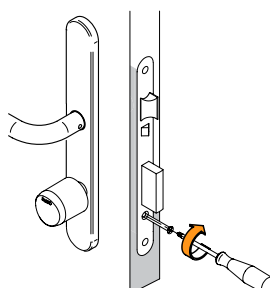


Model GxE2



Model GxE3

5 - Screw it to the mortise lock



At this point do not close the door without having programmed the cylinder first

PROGRAMMING

To grant or deny access permissions are used the right SW license. Once you update the system configuration:

- ROM System updates the access permissions on the cylinders using a PPD.
- RW System is not necessary to update the cylinders with the PPD. The system allows electronic cylinders to read, receive and write information via its operating smart cards or 'intelligent' keys. This data is captured from the cards at SVN on-line hot spots located at strategic points around the building. The "online points" uploads and downloads user related information that is then used to permit, control or deny access.

BATTERIES

Low battery status.

The low battery status can be recognised by 4 slow and low pitched warning tones. If these warnings are ignored then the batteries will fail.



Battery failure.

In the case of complete battery failure the product fails both safe and secure, i.e. the outside handle fails "locked" to avoid intrusions, the inside handle fails "open" to permit emergency openings. Note that once the cylinder is powered again with new batteries all the keys that were programmed into the cylinder will still work as before, because the memory is retentive.



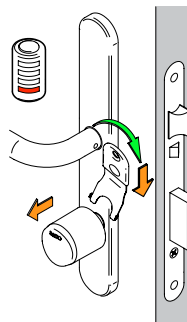
WARNING: The electronic cylinders needs to be updated with the PDD to recover the hour. "The product should not be modified in any way except in accordance with those modifications described in the instructions"

BATTERIES

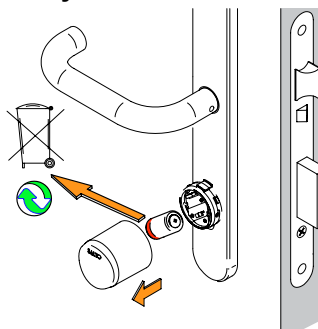
Change the batteries

The new SALTO Geo Cylinder, permits to change the batteries without needing to open the door, so in case of a battery failure you will be able to change the batteries using the **SP220764 tool**.

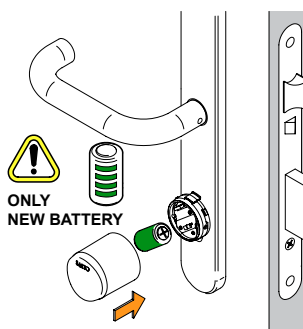
1 - Remove the knob



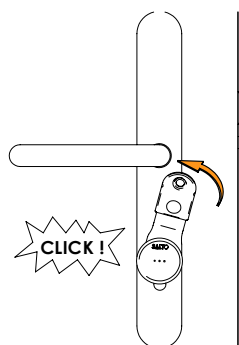
2 - Remove the battery



3 - Replace a new battery



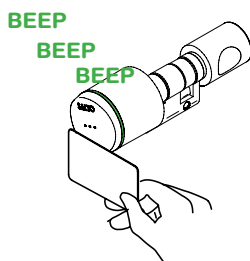
4 - Mount the knob



SALTO GEO SIGNALS

Access granted

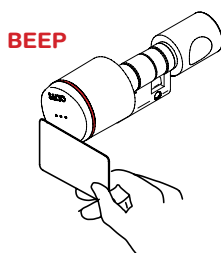
Present a valid user key and get the access granted.



	Acoustic signal	Optical display
	3 short high pitched beeps	3 short green lights

Card rejection

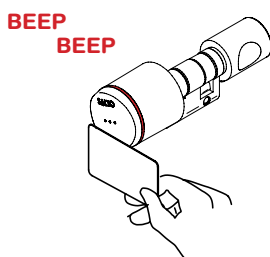
Present a user key that has no access to the door.



	Acoustic signal	Optical display
	1 short high pitched beeps	1 long red light

Access time out

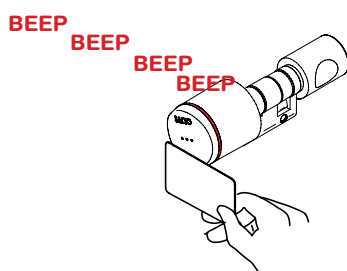
After presenting a valid user card that has access to the door and open the door, the cylinder will remain engaged for a few second. the end of the time out will be then activated.



	Acoustic signal	Optical display
	2 short low pitched beeps	2 short red light

Low battery status

After presenting a valid user card that has access to the door and opening the door, the cylinder will show 4 light red signal and then grant the access.

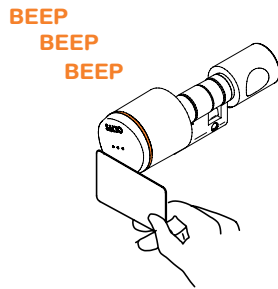




	Acoustic signal	Optical display
	4 short low pitched beeps	4 short red light

SALTO GEO SIGNALS

Battery changed (reset of the electronics)

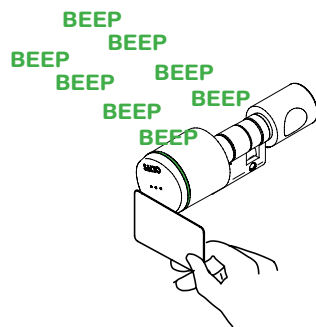
Each time you change the batteries, the electronic will do a reset of the electronic. The cylinder memory will not be erased. To show this reset the cylinder will show an orange light with a lite sound.





	Acoustic signal	Optical display
		
	3 short high pitched beeps	3 orange light

Access granted + Toogle (ROM or RW systems)

After presenting a valid user card with Toogle credentials, the SALTO GEO cylinder will start the Toogle mode. This will be shown by a mix of high and low pitched beeps and 4 green lights.

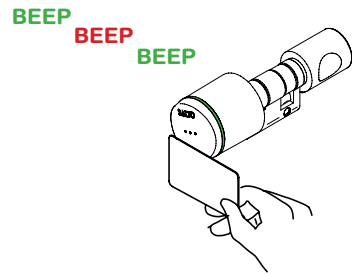


	Acoustic signal	Optical display
		
	1 low pitched 1 high pitched 1 low pitched 1 high pitched beeps	4 green light

SALTO GEO SIGNALS

End Toogle (ROM or RW systems)

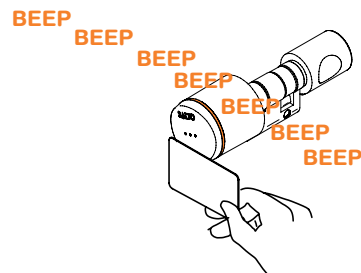
When Toogle mode is activated and you presenting a valid user card with Toogle credentials, the SALTO GEO cylinder will end the Toogle mode. This will be shown by a green light followed by a red light.



	Acoustic signal	Optical display
	1 high pitched beep and 1 low pitched beep	1 short green and one long red light

Gear error

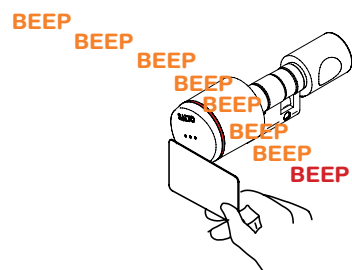
After presenting a valid user card that has access to the door, the cylinder shows a continuous orange blinking plus a combination of acute and high pitched beeps with a final long orange light, that mean that the cylinder gear is broken.



	Acoustic signal	Optical display
	high pitched beeps + low pitched beep	continuous orange lights + long orange light

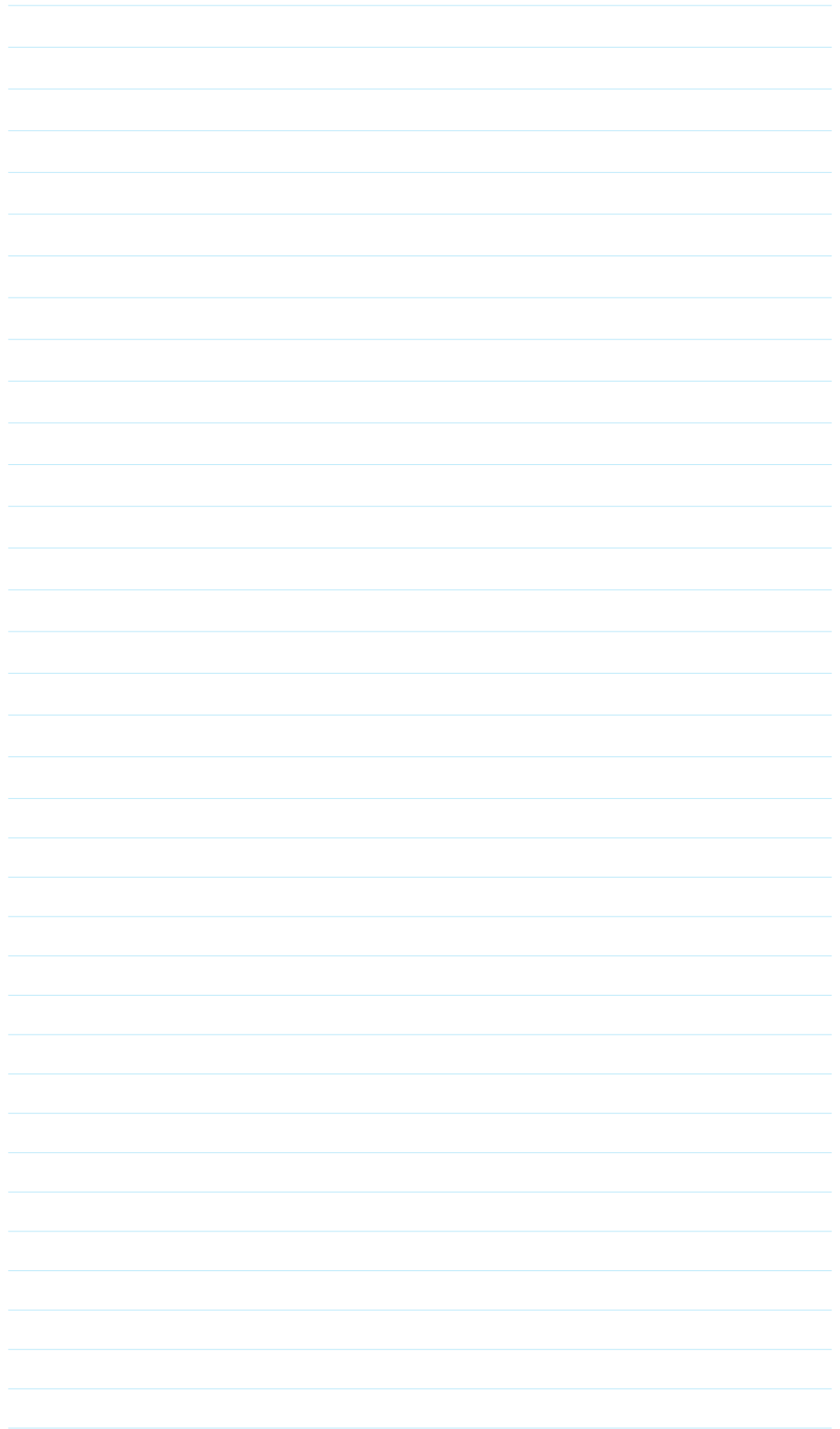
Security error

When the cylinder shows continuous blinking light finished and a combination of high pitched beeps with a final long red light it means that the knob and the cylinder are not paired and they can not be mounted together. please the correct knob with the correct cylinder.



	Acoustic signal	Optical display
	high pitched beeps + low pitched beep	continuous orange lights + long red light

Lined area for notes or additional information.





Learn more about innovative SALTO access control technologies through this QR Code using your smart phone to link to the SALTO website.

FCC Compliance Statements

(FCCID: UKCAE9, UKCAE9W, UKCL90, UKCG90, UKCRPOE, UKCNRF, UKCA9XX, UKCA9XW)

This device complies with Part 15 of the FCC Rules. Operation is subject to the following two conditions: (1) this device may not cause harmful interference, and (2) this device must accept any interference received, including interference that may cause undesired operation. Changes or modifications not expressly approved by the party responsible for compliance could void the user's authority to operate the equipment.

Note: This equipment has been tested and found to comply with the limits for a Class B digital device, pursuant to part 15 of the FCC Rules. These limits are designed to provide reasonable protection against harmful interference in a residential installation. This equipment generates, uses, and can radiate radio frequency energy and, if not installed and used in accordance with the instructions may cause harmful interference to radio communications. However, there is no guarantee that interference will not occur in a particular installation. If this equipment does cause harmful interference to radio or television reception, which can be determined by turning the equipment off and on, the user is encouraged to try to correct the interference by one or more of the following measures:

- Reorient or relocate the receiving antenna.
- Increase the separation between the equipment and receiver.
- Connect the equipment into an outlet on a circuit different from that to which the receiver is connected.
- Consult the dealer or an experienced radio/TV technician for help.

Canadian Compliance Statement

(IC: 10088A-AE9, 10088A-AE9W, 10088A-L90, 10088A-G90, 10088A-RPOE, 10088A-NRF, 10088A-A9XX, 10088A-A9XW)

This device complies with Industry Canada licence-exempt RSS standard(s). Operation is subject to the following two conditions: (1) this device may not cause harmful interference, and (2) this device must accept any interference received, including interference that may cause undesired operation. Changes or modifications not expressly approved by the party responsible for compliance could void the user's authority to operate the equipment.

Le présent appareil est conforme aux CNR d'Industrie Canada applicables aux appareils radio exempts de licence. L'exploitation est autorisée aux deux conditions suivantes : (1) l'appareil ne doit pas produire de brouillage, et (2) l'utilisateur de l'appareil doit accepter tout brouillage radioélectrique subi, même si le brouillage est susceptible d'en compromettre le fonctionnement.

Canadian Compliance Label

(IC: 10088A-AE9, 10088A-AE9W, 10088A-L90, 10088A-G90, 10088A-A9XX, 10088A-A9XW)

Industry Canada ICES-003 Compliance Label:

CAN ICES-3 (B)/NMB-3(B)

EU Compliance Statement

- EN Hereby, Salto Systems S.L. (Arkotz Kalea (Pol. Lanbarren), 9 – 20180 Oiartzun– Spain), declares that this access control equipment is in compliance with the essential requirements and other relevant provisions of Directive 1999/5/EC (R&TEE). You will be able to find a copy of the original declaration of conformity at the following Internet address: <http://www.saltosystems.com/declarations>
- ES Por medio de la presente Salto Systems S.L. (Arkotz Kalea (Pol. Lanbarren), 9 – 20180 Oiartzun– Spain) declara que este equipo de control de accesos cumple con los requisitos esenciales y cualesquiera otras disposiciones aplicables o exigibles de la Directiva 1999/5/CE (R&TEE). Podrá encontrar una copia de la declaración de conformidad original en la siguiente dirección de internet: <http://www.saltosystems.com/declarations>
- FR Par la présente Salto Systems S.L. (Arkotz Kalea (Pol. Lanbarren), 9 – 20180 Oiartzun– Spain) déclare que l'appareil access control equipment est conforme aux exigences essentielles et aux autres dispositions pertinentes de la Directive 1999/5/CE (R&TEE). You will be able to find a copy of the original declaration of conformity at the following Internet address: <http://www.saltosystems.com/declarations>
- DE Hiermit erklärt Salto Systems S.L. (Arkotz Kalea (Pol. Lanbarren), 9 – 20180 Oiartzun– Spain), dass sich das Gerät access control equipment in Übereinstimmung mit den grundlegenden Anforderungen und den übrigen einschlägigen Bestimmungen der Richtlinie 1999/5/EG (R&TEE). You will be able to find a copy of the original declaration of conformity at the following Internet address: <http://www.saltosystems.com/declarations>
- DU Hierbij verklaart Salto Systems S.L. (Arkotz Kalea (Pol. Lanbarren), 9 – 20180 Oiartzun– Spain) dat het toestel access control equipment in overeenstemming is met de essentiële eisen en de andere relevante bepalingen van richtlijn 1999/5/EG (R&TEE). You will be able to find a copy of the original declaration of conformity at the following Internet address: <http://www.saltosystems.com/declarations>

Mechanical Warnings

In order to assure a good performance for the device, Salto recommends to use a certified mortise lock and make sure that it is in good condition. Do not knock the device while mounting, if necessary, loose the trims fixation. Do not bring the device into contact with oil, paints or acids. Do not paint the door with the mortise lock fixed to the door.

CLEANING THE ELECTRONIC FURNITURE: You can use a damp cloth from soapy water. Never use abrasive soaps or sprays. It is important to clean stainless steel regularly.

Legal Warnings

SALTO shall not be liable for any losses, personal damages or claims arising out of, or in connection with the wrong fitting of the cylinders or bad programming that can cause blocking of entries and exits i.e. blocking entrance, exit of Injured or people in danger.

Do you have the programming keys or management software (not included in this box)? If not, then take note that when the door is closed without having been programmed it will automatically lock, and can only be opened with a Portable Programming Device. If in any doubt, please contact your supplier or visit our Web site: www.saltosystems.com

According to the fourth point on the SALTO SYSTEMS LIMITED WARRANTY document, the warranty does not cover product failures due to repair installations, modifications or improper service performed by non-Salto authorised persons. The user is not allowed to disassemble the inner electromechanic structure in the SALTO furniture. (for instance, loosening the torx screws) In the case of a user intended intervention at the inner parts, the user will lose any warranty right from SALTO.



N20371

Copyright © 2013 SALTO Systems