

SAMSUNG 3D Active Glasses 3DG-001-SDC

User's Guide

Features

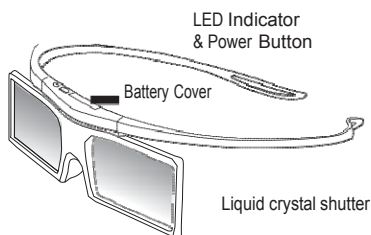
The 3DG-001-SDC 3D glasses enable you to view 3D images. To view 3D images, you need both a pair of the 3D glasses and the Samsung 3D TV which is released in 2011 or later. The Samsung 3D glasses communicate with Samsung 3D TVs via the 2.4GHz RF band.

※ The Samsung 3D glasses can be used only with the Samsung 3D TV released in

2011 or later, or a 3D TV product with the **FULL HD RF 3D GLASSES** or **FULL HD RF 3D GLASSES** logo on it, and can't be used with any other wireless communication products.

※ The "Full HD 3D Glasses™" Logo signifies compatibility between display products and 3D Glasses that are compliant with the "Full HD 3D Glasses™" format and does not indicate the picture quality of the 3D images visible using the glasses, which depends on the quality of the display products.

Parts



Components

3D Active glasses
(Frame body, Temples)

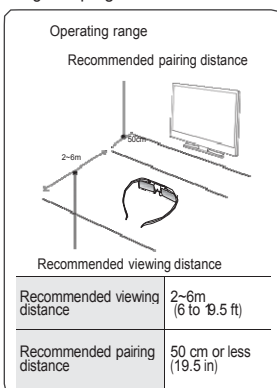
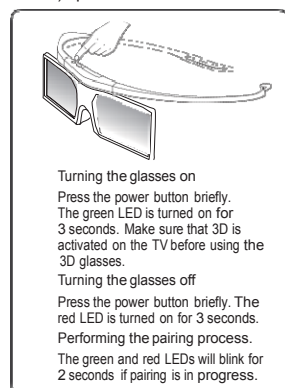
Button Battery
(CR2025)

Cleaning Cloth
User Guide

※ For information on how to attach the arms of the glasses, refer to page 4.

Pairing 3D Active Glasses

- What is Pairing? Pairing is a process of connecting 3D glasses and a 3D TV so that the two devices can exchange data.
- Ensure your Samsung TV and 3D glasses are no farther than 19.5 in (50 cm) apart from each other while pairing is in progress.



- The working distance depends on obstacles (a person, metal, walls, etc.) or electromagnetic waves.
- Turn off the 3D glasses while they are not in use. If you leave the 3D glasses on, the battery lifespan decreases.

Pairing steps

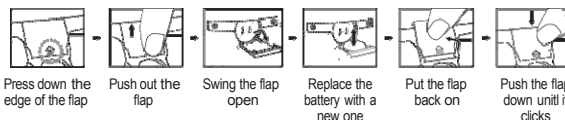
- Turn on the TV, and then move the glasses within 19.5 inches of the TV.
- Press the power button on the 3D glasses briefly. The 3D glasses will power on and pairing will start.
- The message "3D glasses are connected to TV." will be displayed on the TV screen when the pairing is successfully completed.
 - ¼ If the pairing failed, the 3D glasses will power off.
 - ¼ If the first attempt to pair fails, power the TV off and on again and perform step 2.
 - ¼ How to pair again: Press the power button on the 3D glasses for more than 2 seconds.

<Pairing is needed again in the following situations:>

- If the The 3D glasses do not function even when the power button is pressed on the 3D TV after repair.
- If you want to view a 3D video on a different Samsung 3D TV which is released in 2011 or later.

Replacing the Batteries

If the red LED blinks every two seconds continually, replace the batteries with new ones.



- Please insert the battery in the same direction as indicated.

Viewing guidelines

- When viewing a 3D video under a fluorescent lamp (50 Hz – 60 Hz) or 3-wavelength lamp, you may notice a small amount of screen flickering.
 - ※ If this occurs, dim or turn off the light.
- Switching the input mode while watching a 3D movie may disable the 3D function on the TV. As a result, the 3D glasses may not function and the movie may not be displayed properly.
- If the 3D glasses are moved outside of their working distance, the signal from the TV will disconnect and the glasses' 3D function will turn off after several seconds. The 3D glasses will power off 30 seconds after the 3D function turns off. When this happens, the red LED will turn on for 3 seconds.
 - ※ Under some circumstances, the 3D glasses may malfunction due to interference from other devices.
- Ensure you are within the working distance of the glasses when you view a 3D video.
 - ※ The images may not be viewable in 3D if you move outside of the working distance for 3 seconds.
- If you lie on your side while watching TV with 3D active glasses, the picture may appear dark or may not be visible.
- The 3D glasses may not work properly due to interference from other 3D products or electronic devices that operate on the 2.4GHz frequency such as a microwave oven or Internet AP. If the 3D function malfunctions due to interference, please move all other electronic or wireless communication devices as far away from the glasses and the TV as possible.
- The 3D effect may be experienced differently depending on the viewer. You may not notice the 3D effect at all if you wear glasses and have an unusual prescription.
- If a part of the 3D glasses or lenses is defective or damaged, it cannot be repaired and the glasses should be replaced. If the glasses stop working within the warranty period, the glasses can be repaired or replaced for free. If the glasses have been damaged due to the fault of the customer or the warranty period has expired, a new pair of glasses will have to be purchased.

CAUTION

IMPORTANT HEALTH AND SAFETY INFORMATION FOR 3D IMAGES. READ THE FOLLOWING CAUTIONS BEFORE YOU OR YOUR CHILD USE THE 3D FUNCTION.

- Adults should frequently check on children who are using the 3D function. If there are any complaints of tired eyes, headaches, dizziness or nausea, stop the child from viewing the 3D TV and ensure that they rest.
- Do not use the 3D glasses for other purposes such as general wear, sunglasses, protective goggles, etc.
- Some viewers may experience discomfort such as dizziness, nausea and headaches while viewing 3D TV. If you experience any of these symptoms, stop viewing the 3D TV, remove the 3D glasses and rest for awhile.
- Watching 3D pictures for an extended period of time may cause eye strain. If you experience any eye strain, stop viewing the 3D TV, remove the 3D glasses and rest for awhile.
- Do not use the 3D function or 3D glasses while walking or moving around. Using the 3D function or 3D Active Glasses while moving around may result in injury from running into objects, tripping, and/or falling.

SAFETY PRECAUTIONS

The following safety instructions are to ensure your personal safety and prevent property damage. Please read them to ensure the proper use of the product.

- Do not place the product in a location exposed to direct sunlight, heat, fire or water. This may result in a product malfunction or fire.
- Do not apply force to the lenses of the 3D glasses. Do not drop or bend the product. This may result in a product malfunction.
- Use only the specified standard batteries. When replacing the battery, insert the battery so that its polarity (+, -) is correct. Failing to do so may damage the battery or result in fire, personal injury or environmental damage caused by liquid leaking from the battery.
- Keep the used battery out of the reach of children so that they do not accidentally swallow the battery. If your child has swallowed the battery, consult your doctor immediately.
- When cleaning the product, do not spray water or cleaner directly onto the surface of the product. Spraying water or cleaner directly onto the glasses may result in fire or electric shock, damage to the product's surface, or cause the indicator labels on the product's surface to come loose.
- Do not use chemicals containing alcohol, solvents, or surfactants, or chemicals such as wax, benzene, thinner, mosquito repellent, lubricant or cleaners. These may cause a discoloration of or cracks in the product surface and cause the indicator labels on the product's surface to come loose.
- Since the product surface and lens are easily scratched, make sure to use a clean soft cloth (the cleaning cloth supplied with the product, a cloth consisting of superfine fibers or cotton flannel) when cleaning to avoid scratching either the surface or the lens. As the product may become scratched if there are any foreign items on the cloth, make sure to shake off any dust before using it.
- Never disassemble, repair, or modify the 3D glasses yourself. Do not use the glasses when they are out of order or broken.
- Take care that you do not injure your eyes with the edges of the frame of the 3D glasses when wearing them.

Troubleshooting

If you encounter...	Try this...
My 3D glasses do not work.	<ul style="list-style-type: none"> ¾ Replace the battery. ¾ The 3D glasses should be close to the TV. Make sure that the distance between the TV and your 3D glasses is less than 19.68 feet (6m) in a straight line. ¾ Check the 3D function settings of your TV.
The LED keeps blinking	¾ The battery is dead. Replace the battery.

Specifications (Model Number: 3DG-001-SDC)

Optics	Shutters	Liquid crystal	Transmittance	36±2%
	Recommended viewing distance	2~6m (6.5 to 19.68 ft)	Field Rate	120 fields/s
Weight	Glasses	30.5g (including the battery: 33g)		
Power	Glasses	One 3V lithium/manganese dioxide battery 3V(CR2025)		
Power Consumption	Glasses	0.95mA (Average)		
	Battery	Type	165mAh, 3.0V (CR2025)	
		Operating time when On	150hours	
Operating Conditions	Operating Temperature	32 °F ~ 104 °F (0°C ~ 40°C)		
	Custody Temperature	-4 °F ~ 140 °F (-20°C ~ 60°C)		

- ⓘ Product specifications may be changed without notice in order to enhance product performance.
- ⓘ The continuous operating time may differ depending on the wireless communication environment and usage conditions.

WARRANTY

This Samsung product is warranted for the period of twelve (12) months from the original date of purchase, against defective materials and workmanship. In the event that warranty service is required, you should first return the product to the retailer from whom it was purchased. However, Samsung Authorized Service Centres will comply with this warranty during the Warranty Period. To obtain details, please contact your nearest Authorized Service Centre.

PROCEDURE FOR MAKING A WARRANTY CLAIM

To make a claim under the warranty, you must contact the Samsung Contact Centre (see details above) during the Warranty Period to discuss the problems you are having with the product. If a repair or replacement is required, you will be provided with a Warranty Claim Number and address of an Authorized Service Centre. If you are provided with a Warranty Claim Number, to obtain a repair or replacement of the product, you must send the product to the Authorized Service Centre advised together with:

- a copy of your completed warranty card or, if you have already provided this to Samsung, your name, address and contact telephone number;
- your original receipt, invoice or sales slip for the purchase of the product as new;
- your Warranty Claim Number.
Samsung will then repair or replace the product and return it to you using the contact details provided.

WARRANTY CONDITIONS

1. The warranty is only valid if the above procedure for making a warranty claim is followed.
2. Samsung's obligations are limited to the repair or, at its discretion, replacement of the product or the defective part.
3. Warranty repairs must be carried out by Samsung Authorized Service Centres. No re-imbursement will be made for repairs carried out by service centres or dealers that are not authorised by Samsung and any such repair work and damage to the products caused by such repair work will not be covered by this warranty.
4. This product is not considered to be defective in materials nor workmanship by reason that it requires adaptation in order to conform to national or local technical or safety standards in force in any country other than the one for which the product was originally designed and manufactured. This warranty will not cover, and no re-imbursement will be made for such adaptation, nor any damage which may result.
5. The warranty does not apply to any product that has been damaged or rendered defective as a result of any of the following excluded reasons, namely:
 - as a result of accident, misuse, or abuse;
 - through the failure to use this product for its normal purposes;
 - by the use of parts not manufactured or sold by Samsung;
 - by modification without the written permission of Samsung;
 - by damage resulting from transit, neglect, power surge or failure;
 - by damage resulting from lightning, water, fire, or acts of God;
 - as a result of normal wear and tear; or
 - difference in broadcasting methods or product standards between countries.
6. This warranty is valid for any person who legally acquired possession of the product during the warranty period.
7. NOTHING IN THESE WARRANTY CONDITIONS SHALL EXCLUDE OR LIMIT SAMSUNG'S LIABILITY FOR DEATH OR PERSONAL INJURY CAUSED BY THE PROVEN NEGLIGENCE OF SAMSUNG, UNLESS SUCH LIMITATION OR EXCLUSION IS PERMITTED BY APPLICABLE LAW.
8. WITH THE EXCEPTION OF SAMSUNG'S LIABILITY WHICH CANNOT BE EXCLUDED OR LIMITED BY LAW, SAMSUNG SHALL NOT BE LIABLE FOR: ANY INDIRECT, INCIDENTAL, SPECIAL OR CONSEQUENTIAL DAMAGES LOSSES OR EXPENSES; OR LOST PROFITS; OR LOSS OF USE OR LOSS OF DATA; OR DAMAGE TO GOODWILL, REPUTATION OR LOST BUSINESS, ARISING DIRECTLY OR INDIRECTLY, FROM THE PURCHASE, USE OR SALE OF THE PRODUCT, WHETHER OR NOT SAMSUNG WAS ADVISED OR AWARE OF THE POSSIBILITY OF SUCH DAMAGES, LOSSES OR EXPENSES.
9. WITH THE EXCEPTION OF SAMSUNG'S LIABILITY WHICH CANNOT BE EXCLUDED OR LIMITED BY LAW, SAMSUNG'S LIABILITY UNDER OR IN CONNECTION WITH THIS WARRANTY OR THE PURCHASE, USE OR SALE OF THE PRODUCT SHALL NOT EXCEED THE PRICE PAID FOR THE PRODUCT AS NEW.
10. UNLESS PROVIDED FOR IN THIS WARRANTY, ALL CONDITIONS, WARRANTIES AND TERMS IMPLIED BY STATUTE OR OTHERWISE ARE HEREBY EXCLUDED TO THE MAXIMUM EXTENT PERMISSIBLE BY LAW.
11. The above warranty conditions do not affect your statutory rights as a consumer or otherwise.

Regulatory Compliance Statements

NCC Taiwan

低功率電波輻射性電機管理辦法

第十二條 經型式認證合格之低功率射頻電機，非經許可，公司、商號或使用者均不得擅自變更頻率、加大功率或變更原設計之特性及功能。

第十四條 低功率射頻電機之使用不得影響飛航安全及干擾合法通信；經發現有干擾現象時，應改善至無干擾時方得繼續使用。前項合法通信，指依電信法規定作業之無線電通信。低功率射頻電機須忍受合法通信或工業、科學及醫療用電波輻射性電機設備之干擾。

FCC COMPLIANCE

Federal Communication Commission Interference Statement

- 1) Changes or modifications not expressly approved by the party responsible for compliance could void the user's authority to operate the equipment.
- 2) NOTE: This equipment has been tested and found to comply with the limits for a Class B digital device, pursuant to Part 15 of the FCC Rules. These limits are designed to provide reasonable protection against harmful interference in a residential installation. This equipment generates, uses and can radiate radio frequency energy and, if not installed and used in accordance with the instructions, may cause harmful interference to radio communications. However, there is no guarantee that interference will not occur in a particular installation. If this equipment does cause harmful interference to radio or television reception, which can be determined by turning the equipment off and on, the user is encouraged to try to correct the interference by one or more of the following measures:
 - o Reorient or relocate the receiving antenna.
 - o Increase the separation between the equipment and receiver.
 - o Connect the equipment into an outlet on a circuit different from that to which the receiver is connected.
 - o Consult the dealer or an experienced radio/TV technician for help.

FCC Caution: Any changes or modifications not expressly approved by the party responsible for compliance could void the user's authority to operate this equipment.

This device complies with Part 15 of the FCC Rules. Operation is subject to the following two conditions: (1) This device may not cause harmful interference, and (2) this device must accept any interference received, including interference that may cause undesired operation.

IC Statement

This Class B digital apparatus complies with Canadian ICES-003.

Operation is subject to the following two conditions: (1) this device may not cause interference, and (2) this device must accept any interference, including interference that may cause undesired operation of the device.

Cet appareil numérique de la classe B est conforme à la norme NMB-003 du Canada.

This device and its antenna(s) must not be co-located or operation in conjunction with any other antenna or transmitter.

Italian Homologation Notice

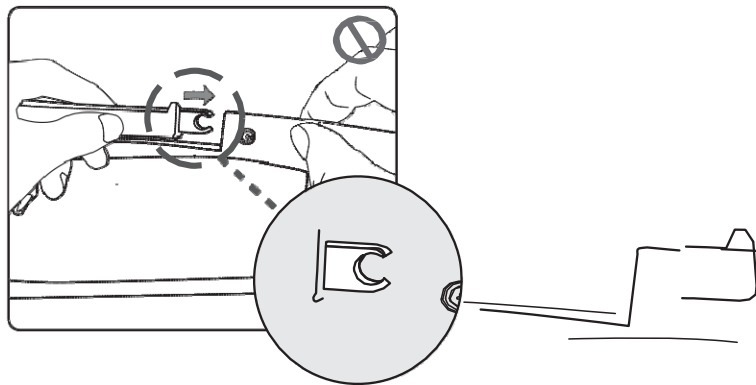
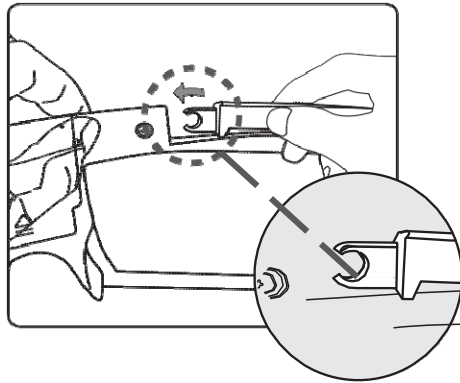
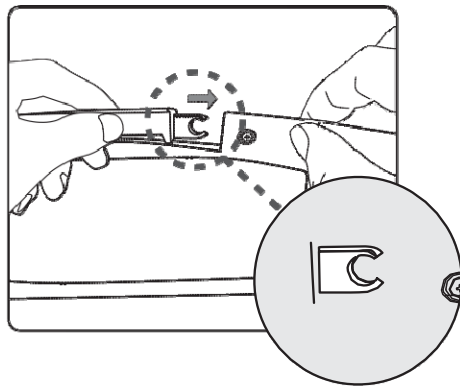
Questo apparecchio è fabbricato in conformità al D.M.28.08.95 n.548 ed in particolare a quanto specificato nell'Art.2, comma 1.
Questo apparecchio è fabbricato nella U.E. in conformità al D.M.28.08.95 n.548 Art.2, comma 1 ed al D.M.26.03.92 Art.1

– For products produced in countries except European Community
Questo apparecchio è fabbricato in conformità al D.M.28.08.95 n.548 ed in particolare a quanto specificato nell'Art.2, comma 1.

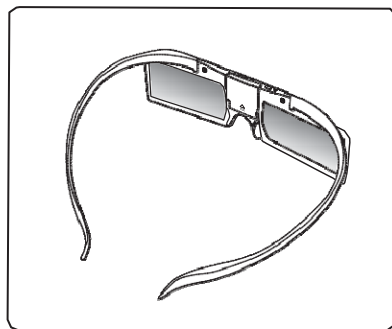
– For products produced in European Community
Questo apparecchio è fabbricato nella U.E. in conformità al D.M.28.08.95 n.548 Art.2, comma 1 ed al D.M.26.03.92 Art.1



○ Attaching the temples



○ Assembly complete



◆ Pairing

