

## DSR2700

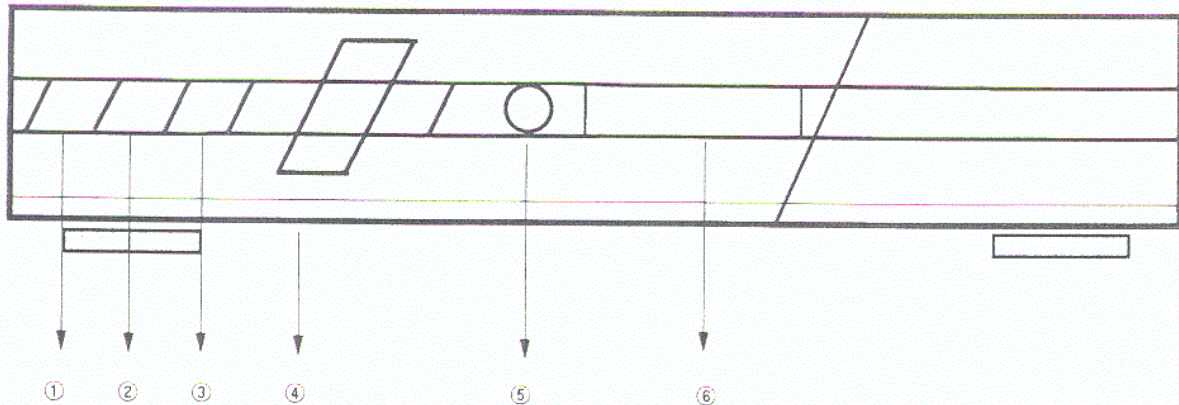
## Software Download

When Frequency and SR parameters display '\*\*\*\*\*' this means that the factory default value has been applied.

Software Download	
Frequency	*****
SR	** . ****
FEC	AUTO
PoI	Hor
PID	0000
Table ID	000

This feature is to upgrade the receivers system software.

1. Press 6. from 'System Setup' menu.
2. Press download to upgrade software version.(The current displayed parameters are the factory default values.The default values will always be saved even if the user might edit it or forget it,Just turn the receiver off and back on to reload factory default values)
3. If the software download parameters change select Edit,modify the parameters and then download.



The Front Panel Menu provides access to most features, using the "highlight and select" method using the ▲/▼ and SELECT buttons. Press the FUNCTION key to bring up the Front Panel Main Menu.

① POWER

Turns the receiver power on or places the receiver in Standby Mode. When the power is restored it will return to the last watched channel or other preference set in Power Up Channel menu.

② CLEAR

Used to remove on-screen display, exit from Menu while *saving changed parameters* and return to normal programme viewing.

③ MENU

Used to display Front Panel Menu for access to volume control, Programme Guide or Menu System.

④ SELECT, ▼ and ▲, ◀ and ▶

SELECT KEY:

Used to select highlighted programmes in the Programme Guide and highlighted selections on menu screens.

▼ and ▲:

Used to change channels, move highlighted area in the Programme Guide and Menu System and enter Passwords when required.

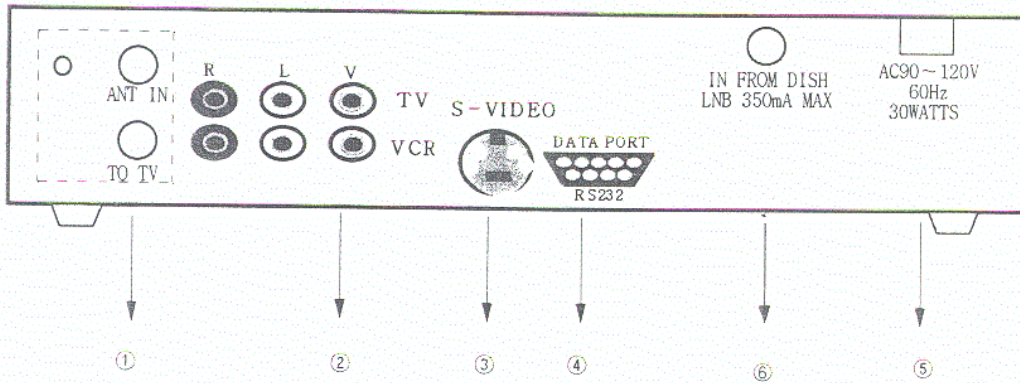
◀ and ▶: Used to control volume level while programme viewing and to move forward and back through the menu screens.

⑤ Infra Red Sensor

⑥ 4digit 7-segment LED Display

DSR2700

Rear Panel



① TV ANT IN, TO TV

TV ANT IN:

Used to connect an off-air television antenna or cable to your DSR2700 Television system.

TO TV:

Used to connect your receiver to your the UHF input on your television using coaxial cable.

② VIDEO & AUDIO R(right) and AUDIO L (left)

Used to connect to TV & VCR

③ S-VIDEO

Super VHS output for high quality picture.

④ RS232

Used to connect your receiver to your computer.

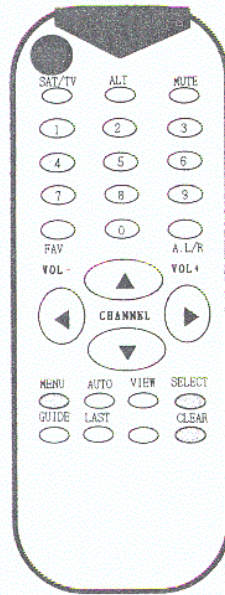
⑤ AC 90 - 120V 60Hz

Power cord

⑥ LNB

Used to connect the coaxial cable from your satellite dish.

## Remote Control Unit

**POWER KEY**

Used to switch receiver between Power On/Standby Mode.

**MUTE KEY**

Used to toggle between normal and muted audio.

**SAT/TV KEY**

Used to switch between DTH TV system and local/cable TV broadcasts.

**0 - 9 KEYS**

Used to enter channel and P.I.N. numbers. They are also used to select menu items.

**FAV KEY**

Used to switch between favorite program lists.

**A.L/R**

Used to switch audio left and right.

**MENU KEY**

Used to bring up the Main Menu screen.

**▲ and ▼ KEYS (multi-function)**

Used to surf channels in the current Channel List while programme viewing and highlight selections in the Programme Guide and Menu System.

**◀ and ▶ KEYS (multi-function)**

Used to control the volume level while programme viewing and page-scroll in the Menu System.

**SELECT**

Used to select highlighted selection in the Menu System.

**CLEAR KEY (dual-function)**

Used to save settings and remove on-screen display, exit Menu System and return to normal programme viewing.

## DSR2700

### ALT KEY

Used to select Alternate Language Audio.  
Use to move item window(move the cursor)

AUTO KEY(dual-function)  
Reserved for future use.

### GUIDE KEY

To display Electronic Program Guide from satellite.

### VIEW KEY

Used to display Information Banner.

## 1. System

- TV System : NTSC
- Symbol Rate : 2 ~ 30MSamples/s
- Modulation : QPSK(DVB specification)
- Inner FEC : Viterbi Convolutional Coding  
rate 1/2, 2/3, 4/3, 5/6, 7/8(DVB)
- Outer FEC : Reed Solomon Coding(204, 198)  
T=8(DVB)
- System Decoding : ISO/IEC 13818-1(MPEG2)
- Video Decoder : 13818-2(MPEG2) MPEG1  
11172-2(MPEG1) Compatible  
Wide Screen TV(16:9)  
Normal TV(4:3)
- Picture Resolution: 720(H) × 480(V) × 60 Fields/Sec  
560(H) × 480(V) × 60 Fields/Sec  
480(H) × 480(V) × 60 Fields/Sec  
360(H) × 480(V) × 60 Fields/Sec
- Audio Decoder : ISO/IEC 11172-3(MPEG1) Layer 1, 2  
Multi-Lingual  
Sampling Frequency: 32, 44.1, 48 KHz  
Stereo, Dual, Mono, Joint Stereo
- Memory : DRAM 1MByte, SDRAM 2MByte  
non-volatile 1MByte flash
- Demultiplexing : min 3 PES streams  
Video data rate max. 15Mbit/s  
Audio data rate max. 384Mbit/s
- Number of Channels : up to 1000
- u-Processor : ST20TP2
- Language : ENGLISH

## 2. GENERAL FEATURES

- Dimension : 60(W) X 160(D) X 50(H)
- Operating Temperature : 0°C ~ 40°C
- Storage Temperature : -20°C ~ 60°C
- Humidity : Operating - less than 85%  
Storage - less than 90%
- Remote Control : Full Function Infra-Red Remote  
Control Unit

## 3. TUNER

- Output connector : 1x F type, to connect  
an analogue receiver.
- Input Frequency Range : 950 ~ 2150 MHz
- Input Impedance : 75 Ω
- Connector Type : F TYPE
- Bandwidth : 27 MHz / 55MHz
- Input Level : -65 ~ -25 dBm
- First IF Frequency : 479.5 MHz
- AGC Voltage : 0 ~ 5V
- Channel Selection : PLL Frequency Synthesizer
- PLL Control Interface : IIC BUS
- Output Signal : 1, 0 Analog Output With 2V<sub>rms</sub>  
(LOAD 1KΩ)
- AFC Range : ± 2.5 MHz
- Tuning System : PLL Synthesiser

## 4. Front Control

- Rudimentary receiver control

## 5. Power Supply

- Type : SMP5
- Input Voltage : 90V ~ 120Vac
- Voltage Frequency : 60 Hz
- Protection : Internally Fused

## 6. LNB control

- LNB Power Supply : 14V/18V, 350 mA Max
- Short circuit protected

## 7. COMPOSITE VIDEO OUTPUT

- Composite Video : NTSC
- Level : 1V<sub>rms</sub> (LOAD 75Ω)
- Impedance : 75 Ω
- Connector : RCA PHONO JACKS
- S/N Ratio : 60 dB Min.(UNWEIGHTED)

## 8. AUDIO OUTPUT

- Operating Mode : Stereo, Dual Mono, Joint Stereo
- Output Level : 1.2 ± 0.2V<sub>rms</sub>
- Output Connector : RCA Phone Jack(Female).  
Right : RED, Left : WHITE
- Left/Right Balance : ± 2 dB Max
- S/N Ratio : 70 dB Min

## 9. RE-MODULATOR OUTPUT

- TV Standard : NTSC
- Level : 77 ~ 83 dBμV
- Output : CH 3, CH 4
- Pre-Set Channel : CH 3
- Connector : F-TYPE
- Audio : Mono

## 10. ASYNCHRONOUS DATA OUTPUT

- Standard : RS232
- Bit Rate : 115200 bps
- Connector Type : 9 Pin D-Type

Menu Tree

