

SAMSUNG MagicLAN

Quick Installation Guide

(Wireless LAN Card)

□□ □□□ □□□ □□ □□ □□□

Rev 2.1

□ □□□ □□ □□ □□ □□□ □□□.

This manual supports English and Korean.



SAMSUNG MagicLAN

English Manual



Notice 1

This manual cannot be reproduced in any form without the prior written permission of SAMSUNG Electro-Mechanics Co., Ltd.

SAMSUNG Electro-Mechanics Co., Ltd. reserves the right to change this manual and the specifications to improve products without prior notice. So you can get the most recent software and user documentation for all MagicLAN products on our web site.

The users manual or instruction manual for an intentional or unintentional radiator shall caution the user that changes or modifications not expressly approved by the party responsible for compliance could void the user's authority to operate the equipment.

All other brand and product names are trademarks of registered trademarks of their respective holders.

<http://www.MagicLAN.com>

Service Dept.

Tel : +82-31-218-2416,8,9,20 Fax : +82-31-218-2431

Sales Dept.

<America>

Tel : +82-31-218-2407,9,11 Fax : +82-31-210-5996

<Europe>

Tel : +82-31-218-2409 Fax : +82-31-210-5996

<Asia>

Tel : +82-31-210-5603 Fax : +82-31-218-2414

Japan

Tel : +82-31-210-3122 Fax : +82-31-210-5996

China

Tel : +82-31-210-5703 Fax : +82-31-210-5996

Copyright © 1999 - 2003 SAMSUNG Electro-Mechanics Co., Ltd.
All rights reserved.

Notice 2

Important Safety Information

- Read these simple guidelines. Breaking the rules may be dangerous or illegal. SAMSUNG will not be responsible for any damages caused by breaking the rules.
- WLAN Card described in this document is approved for use in a wireless local area network.
- Remember to make backup copies of important data.
- When you are transferring data, keep your laptop computer stationary. Roaming between access points (APs) may break the connection.
- Only qualified service personnel must repair the equipment.
- All wireless devices may get interference, which could affect performance.
- Use approved accessories only. Do not connect incompatible products.
- Use only accessories approved by the WLAN Card manufacturer for use with this particular WLAN Card. The use of any other types will invalidate any approval or warranty applying to the WLAN Card, and may be dangerous.
- Use only the region settings appropriate for the area where the WLAN Card is used at the present time. Using the card in any other region or with an incorrect region setting is prohibited and may be illegal.
- Operation of any radio transmitting equipment, including a WLAN Card, may cause interference with the functionality of inadequately protected medical devices.
- Do not use the WLAN Card on aircraft.
- Do not use the WLAN Card at a refueling point.
- Do not use the WLAN Card near inflammable materials or chemicals.
- Do not use the WLAN Card where blasting is in progress.
- Do not use the WLAN Card when the use of wireless device may cause interference or danger.
- Do not use the WLAN Card where the use of cellular terminals is prohibited.
- Microwave oven degrades the performance of wireless LAN drastically. So do not use the WLAN card in the environment where Microwave oven is being used.
- CardBus Card supports a 3.3-volt slot only. If a CardBus Card is inserted in a 5-volt only PC Card slot, the card can be damaged due to electrical overload.



Notice 3

FCC Statement and Warnings :

This device complies with Part 15 rules of the FCC and RSS-210 of Industry of Canada. Operation is subject to the following two conditions:

1. This device may not cause harmful interference, and
2. This device must accept any interference received, including interference that may cause undesired operation.

Changes or modifications not expressly approved by the party responsible for compliance could void the user's authority to operate the equipment.

Manufacturers Federal Communications Commission Declaration of Conformity Statement:

This equipment has been tested and found to comply with the limits of a Class B digital device, pursuant to Part 15 of the FCC Rules. These limits are designed to provide reasonable protection against harmful interference when the equipment is operated in a residential environment. This equipment generates, uses, and radiates radio frequency energy, and if not installed and used in accordance with the instructions, may cause harmful interference. However, there is no guarantee that interference will not occur. If this equipment does cause interference to radio or television reception, which can be determined by turning the equipment off and on, the user is encouraged to correct the interference by one of the following measures:

- REORIENT OR RELOCATE THE RECEIVING ANTENNA.
- INCREASE SEPARATION BETWEEN THE EQUIPMENT AND RECEIVER.
- CONNECT THE EQUIPMENT TO AN OUTLET ON A CIRCUIT DIFFERENT FROM WHICH THE RECEIVER IS CONNECTED.
- CONSULT THE DEALER OR AN EXPERIENCED RADIO/TV TECHNICIAN.

Caution

The Part 15 radio device operates on a non-interference basis with other devices operating at this frequency when using the listed antenna. Any changes or modifications to product not expressly approved by Samsung Electro-Mechanics could void the user's authority to operate this device.



ELECTRO-MECHANICS

Declaration of Conformity for RF Exposure:

The radio module has been evaluated under FCC Bulletin OET 65C and found compliant to the requirements as set forth in CFR 47 Sections 2.1091, 2.1093, and 15.247 (b) (4) addressing RF Exposure from radio frequency devices. For the listed antenna, the equipment should be positioned more than 2.5cm(USB/PCMCIA, PCI : 20cm) from your body or nearby persons.

Collocation Statement for CardBus WLAN Product:

This device must not be collocated with any other antenna or transmitters.

EMC Warning(French)

CE Statement and Warnings :

AVERTISSEMENT

Pendant l'installation et l'utilisation de cette combinaison d'émetteur et antenne, la limite d'exposition de fréquence radio de 1 mW/cm² peut être excédée à courtes distances des antennes installées.

À cet effet, l'utilisateur doit garder une distance minimale de 20 cm de l'antenne.

Information Importante de Sécurité

- Lisez ces simples directives. La violation des règles peut être dangereuse ou illégale. SAMSUNG ne sera pas responsable pour des dommages causés par la violation des règles.
- La carte WLAN décrite dans ce document a été approuvée pour utilisation dans un réseau local (local area network) sans fil.
- N'oubliez pas de faire des copies de sécurité de toute information importante.
- Pendant la transmission de données, ne déplacez pas votre laptop. Le déplacement entre access points (APs) peut couper la communication.
- Le matériel sera uniquement réparé que par du personnel de service qualifié.
- Tout appareillage sans fil peut recevoir de l'interférence, ce qui peut agir sur le fonctionnement.
- N'utilisez que des accessoires approuvés. Ne connectez pas de produits incompatibles.
- Utilisez seulement des accessoires approuvés par le constructeur pour l'usage en combinaison avec cette carte spécifique WLAN. L'utilisation d'autres types invalidera toute agrément ou garantie qui s'applique à la carte WLAN et peut être dangereuse.
- Utilisez seulement des mises au point régionales convenables à la région où la carte WLAN est actuellement en usage. L'utilisation de la carte dans une autre région ou avec des mises au point régionales incorrectes est interdite et peut être illégale.
- L'utilisation d'émetteurs radio, dont les cartes WLAN, peut causer de l'interférence sur la fonctionnalité d'appareils médicaux sans protection suffisante.
- N'utilisez pas la carte WLAN dans un avion.
- N'utilisez pas la carte WLAN près d'un point de recharge de carburant.
- N'utilisez pas la carte WLAN près de matières inflammables ou de produits chimiques.
- N'utilisez pas la carte WLAN où des explosions sont en cours.
- N'utilisez pas la carte WLAN quand l'usage d'appareils sans fil peut causer de l'interférence ou du danger.
- N'utilisez pas la carte WLAN où l'usage de terminaux sans fil est interdit.
- Les fours à micro-ondes diminuent la fonctionnalité des LANs sans fil considérablement. À cet effet, n'utilisez donc pas la carte WLAN dans un environnement où un four à micro-ondes est en usage.

EMC Warning(German)

CE Statement and Warnings :

WARNUNG

Bei der Installation und Gebrauch dieser Kombination von Sendegerät und Antenne kann bei geringer Entfernung der installierten Antennen die Funkfrequenzintensitätsgrenze von $1\text{mW}/\text{cm}^2$ überschritten werden.

Deswegen soll der Benutzer eine minimum Entfernung von 20 cm der Antenne betrachten.

Wichtige Sicherheitsinformation

- Lesen Sie diese einfachen Richtlinien. Übertretung der Regeln kann gefährlich oder illegal sein. SAMSUNG ist nicht verantwortlich für Schaden welchen verursacht werden durch Übertretung der Regeln.
- Die WLAN Karte der beschrieben wird in dieses Dokument ist für WLAN Gebrauch genehmigt worden.
- Denken Sie daran Kopien von wichtige Information zu machen und aufzubewahren .
- Solange Sie Daten übertragen, halten Sie denn Ihren Laptopcomputer unveränderlich. Verlegung des Gerätes zwischen Access Points (APs) kann die Verbindung lösen.
- Das Gerät soll nur von qualifiziertes Sevicepersonal repariert werden.
- Durch Interferenz kann das Funktionieren jedes drahtlosen Gerätes beeinflusst werden.
- Nur genehmigte Accessoires sollen verwendet werden. Schließen Sie keine inkompatibele Produkte an.
- Benutzen Sie in Kombination mit dieser spezifischen WLAN Karte nur Accessoires welchen vom Hersteller genehmigt worden sind. Das Gebrauch von andere Typen macht jede Zulassung oder Garantie die anwendbar ist auf die WLAN Karte fällig und kann gefährlich sein.
- Beim Gebrauch sollen die jeweiligen regionalen Bedingungen berücksichtigt werden. Der Betrieb der Karte in einer anderen Region oder mit einer falschen regionalen Einstellung ist verboten und kann illegal sein.
- Der Betrieb von Funkgeräte, einschließlich WLAN Karten, kann Interferenz verursachen auf das Funktionieren von unzureichend geschützte medizinische Geräte.
- Die WLAN Karte soll nicht in Flugzeuge benutzt werden.
- Die WLAN Karte soll nicht an einer Tankstelle benutzt werden.
- Die WLAN Karte soll nicht in der Nähe von entzündliche Materialien oder Chemikalien benutzt werden.
- Die WLAN Karte soll nicht in der Nähe von Explosionen benutzt werden.
- Die WLAN Karte soll nicht benutzt werden wenn der Betrieb von drahtloser Geräten Interferenz oder Gefahr verursachen könnte.
- Die WLAN Karte soll nicht benutzt werden wenn der Betrieb drahtloser Teminals verboten ist.
- Das Funktionieren von drahtlosen LANs wird von Mikrowellengeräte drastisch negativ beeinflusst. Deswegen soll die WLAN Karte nicht benutzt werden in einer Umgebung wo ein Mikrowellengerät benutzt wird.

EMC Warning(Greek)

CE Statement and Warnings :

ΠΡΟΕΙΔΟΠΟΙΗΣΗ

Κατά την εγκατάσταση και λειτουργία αυτού του συνδυασμού πομπού και κεραίας, ενδέχεται να ξεπεραστεί το όριο έκθεσης σε ραδιοσυχνότητα του $1\text{mW}/\text{cm}^2$ σε αποστάσεις που βρίσκονται κοντά στις εγκατεστημένες κεραίες. Για τον λόγο αυτό ο χρήστης θα πρέπει να διατηρεί μια ελάχιστη απόσταση 20 εκατοστών από την κεραία.

Σημαντικές Πληροφορίες Ασφαλείας

- Διαβάστε αυτές τις απλές οδηγίες. Η μη τήρηση των κανόνων ενδέχεται να είναι επικίνδυνη ή παράνομη. Η SAMSUNG δεν θα είναι υπεύθυνη για οποιοσδήποτε ζημίες προκληθούν από τη μη τήρηση των κανόνων.
- Η κάρτα WLAN Card η οποία περιγράφεται στο παρόν έγγραφο έχει εγκριθεί για χρήση σε ένα ασύρματο τοπικό δίκτυο (wireless local area network).
- Θυμηθείτε να δημιουργήσετε αντίγραφα ασφαλείας των σημαντικών δεδομένων σας.
- Όταν μεταφέρετε δεδομένα, ο φορητός προσωπικός σας υπολογιστής θα πρέπει να παραμένει ακίνητος. Η μετακίνηση ανάμεσα σε σημεία πρόσβασης (Aps) ενδέχεται να διακόψει τη σύνδεση.
- Μόνο εξειδικευμένο τεχνικό προσωπικό θα πρέπει να επισκευάζει τον εξοπλισμό αυτό.
- Όλες οι ασύρματες συσκευές ενδέχεται να δημιουργήσουν παρεμβολές, οι οποίες θα μπορούσαν να επηρεάσουν την απόδοση.
- Χρησιμοποιείτε μόνο εγκεκριμένα εξαρτήματα. Μη συνδέετε ασύμβατα προϊόντα.
- Χρησιμοποιείτε μόνο εξαρτήματα τα οποία έχουν εγκριθεί από τον κατασκευαστή της WLAN Card για χρήση με αυτή τη συγκεκριμένη WLAN Card. Η χρήση οποιονδήποτε άλλων τύπων θα καταστήσει άκυρη κάθε έγκριση ή εγγύηση που ισχύει στην περίπτωση της WLAN Card, ενώ ενδέχεται να είναι και επικίνδυνη.
- Χρησιμοποιείτε μόνο τις ρυθμίσεις περιοχής (region settings) που ισχύουν για την περιοχή όπου η WLAN Card χρησιμοποιείται την παρούσα στιγμή. Η χρησιμοποίηση της κάρτας σε οποιαδήποτε άλλη περιοχή ή με λανθασμένες ρυθμίσεις περιοχής απαγορεύεται και ενδέχεται να είναι παράνομη.
- Η λειτουργία οποιασδήποτε συσκευής που εκπέμπει ραδιοσήματα, συμπεριλαμβανομένης και μιας κάρτας WLAN Card, ενδέχεται να δημιουργήσει παρεμβολές και να επηρεάσει τη λειτουργικότητα ιατρικών συσκευών οι οποίες δεν διαθέτουν την πρόβλεψη θωράκιση.
- Μη χρησιμοποιείτε τη WLAN Card σε αεροσκάφη.
- Μη χρησιμοποιείτε τη WLAN Card σε σημεία ανεφοδιασμού καυσίμων.
- Μη χρησιμοποιείτε τη WLAN Card κοντά σε εύφλεκτα υλικά ή χημικά.
- Μη χρησιμοποιείτε τη WLAN Card όταν βρίσκονται σε εξέλιξη ανατινάξεις.
- Μη χρησιμοποιείτε τη WLAN Card όταν η χρήση ασύρματων συσκευών ενδέχεται να προκαλέσει παρεμβολές ή κίνδυνο.
- Μη χρησιμοποιείτε τη WLAN Card σε μέρη στα οποία απαγορεύεται η χρήση κυνελοειδών τερματικών.
- Οι φούρνοι μικροκυμάτων υποβαθμίζουν δραστικά τις επιδόσεις των ασύρματων τοπικών δικτύων. Ως εκ τούτου δεν θα πρέπει να χρησιμοποιείτε τη WLAN Card σε περιβάλλον στο οποίο χρησιμοποιούνται φούρνοι μικροκυμάτων.

EMC Warning(Italian)

CE Statement and Warnings :

AVVERTENZA

Durante l'installazione e l'uso di questa combinazione di trasmettitore ed antenna, è possibile che venga superato il limite di esposizione alle radiofrequenze di 1mW/cm² a distanze vicine alle antenne installate.

Per tale motivo, l'utente deve mantenere una distanza minima di 20 cm dall'antenna.

Informazioni importanti sulla sicurezza

- Leggere queste semplici linee guida. La violazione delle regole può risultare pericolosa o illegale. SAMSUNG non sarà responsabile per eventuali danni provocati dalla violazione delle regole.
- La Scheda WLAN descritta in questo documento è approvata per l'uso in una rete locale (LAN) senza fili.
- Ricordarsi di effettuare copie di backup di dati importanti.
- Durante il trasferimento dei dati, tenere fermo il proprio laptop. Passando fra diversi punti di accesso (AP) si può interrompere il collegamento.
- Il dispositivo deve essere riparato unicamente da personale tecnico qualificato.
- Tutti dispositivi senza filo possono ricevere interferenze, che possono comprometterne le prestazioni.
- Utilizzare unicamente accessori approvati. Non collegare il dispositivo a prodotti non compatibili.
- Utilizzare unicamente accessori approvati dal produttore della Scheda WLAN. Oltre ad essere pericoloso, l'uso di altri tipi di dispositivi renderà nulla qualsiasi approvazione garanzia relativa alla Scheda WLAN.
- Utilizzare unicamente le impostazioni regionali appropriate per l'area in cui la Scheda WLAN viene utilizzata al momento. L'uso della Scheda in altre regioni o con un'impostazione regionale non corretta è proibito e può essere illegale.
- Il funzionamento di un qualsiasi dispositivo di trasmissione radio, compresa una Scheda WLAN, può provocare interferenze con la funzionalità di dispositivi medici senza protezione adeguata.
- Non utilizzare la Scheda WLAN a bordo di aerei.
- Non utilizzare la Scheda WLAN presso un punto di rifornimento di carburante.
- Non utilizzare la Scheda WLAN accanto a materiali o chimici infiammabili.
- Non utilizzare la Scheda WLAN durante un'esplosione.
- Non utilizzare la Scheda WLAN qualora l'uso di dispositivi senza filo possa provocare interferenza o costituire un pericolo.
- Non utilizzare la Scheda WLAN laddove è proibito l'uso di cellulari.
- Il forno a microonde compromette considerevolmente le prestazioni di una rete LAN senza fili. Per tale motivo, non usare la Scheda WLAN in un ambiente dove si fa uso di forno a microonde.

EMC Warning(Dutch)

CE Statement and Warnings :

WAARSCHUWING

Bij installatie en gebruik van deze zender-antennecombinatie kan de blootstellingslimiet van de radiofrequentie van 1 mW/cm² overschreden worden op korte afstand van de geïnstalleerde antennes. De gebruiker dient daarom altijd minimaal 20 cm afstand te houden van de antenne.

Belangrijke Veiligheidsinformatie

- Lees deze eenvoudige richtlijnen. De regels overtreden kan gevaarlijk of illegaal zijn. SAMSUNG kan niet verantwoordelijk worden gehouden voor schade die is veroorzaakt door overtreding van de regels.
- De in dit document beschreven WLAN Card is goedgekeurd voor gebruik in een draadloos lokaal netwerk.
- Vergeet niet reservekopieën van belangrijke informatie te maken.
- Wanneer u data verzendt of ontvangt, verplaats uw laptopcomputer dan niet. Bij verplaatsing tussen access points (APs) kan de verbinding verbreken.
- De apparatuur dient alleen door gekwalificeerd servicepersoneel gerepareerd te worden.
- Alle draadloze apparatuur kan storing ondervinden, waardoor de werking beïnvloed kan worden.
- Gebruik alleen goedgekeurde accessoires. Sluit geen producten aan die niet compatibel zijn.
- Gebruik alleen accessoires die door de WLAN Card fabrikant goedgekeurd zijn voor gebruik in combinatie met deze specifieke WLAN Card. Het gebruik van andere types maakt elke goedkeuring of garantie die van toepassing is op de WLAN Card ongeldig en kan gevaarlijk zijn.
- Gebruik alleen de regionale instellingen die geschikt zijn voor het gebied waar de WLAN Card op dat moment gebruikt wordt. Het gebruik van de kaart in een ander gebied of met een onjuiste regionale instelling is verboden en kan illegaal zijn.
- Het gebruik van radio-zendapparatuur, waaronder WLAN Cards, kan storing veroorzaken op de functionaliteit van onvoldoende beschermde medische apparatuur.
- Gebruik de WLAN Card niet in een vliegtuig.
- Gebruik de WLAN Card niet bij een tankstation.
- Gebruik de WLAN Card niet in de nabijheid van ontvlambare materialen of chemicaliën.
- Gebruik de WLAN Card niet waar explosies in uitvoering zijn.
- Gebruik de WLAN Card niet wanneer het gebruik van draadloze apparatuur storing of gevaar kan veroorzaken.
- Gebruik de WLAN Card niet waar het gebruik van draadloze terminals verboden is.
- Magnetron-ovens verminderen de werking van wireless LANs drastisch. Gebruik daarom de WLAN Card niet in een omgeving waar een magnetron-oven in gebruik is.

EMC Warning(Portuguese)

CE Statement and Warnings :

ADVERTÊNCIA

Quando instalar e utilizar este conjunto de transmissor e antena, o limite de exposição à frequência de rádio de $1\text{mW}/\text{cm}^2$ pode ser excedido junto a antenas. Por conseguinte, o utilizador deve manter uma distância mínima de 20 cm da antena.

Importante Informação de Segurança

- Leia estas simples instruções. O não cumprimento das regras pode ser perigoso ou ilegal. A SAMSUNG não será responsabilizada por quaisquer danos provocados pelo não cumprimento das regras.
- A placa WLAN Card descrita neste documento foi aprovada para utilização numa rede de área local sem fio.
- Não se esqueça de fazer cópias de segurança dos dados importantes.
- Quando transferir dados, mantenha o computador portátil imóvel. O *roaming* entre pontos de acesso (APs) pode interromper a ligação.
- O equipamento deve ser reparado apenas por pessoal de serviço qualificado.
- Todos os dispositivos sem fio podem sofrer interferências, o que pode afectar o desempenho.
- Utilize apenas acessórios aprovados. Não ligue produtos incompatíveis.
- Utilize apenas acessórios aprovados pelo fabricante da placa WLAN Card para utilização com esta placa WLAN Card em particular. A utilização de quaisquer outros tipos invalidará qualquer homologação ou garantia aplicável à placa WLAN Card e pode ser perigoso.
- Utilize apenas as definições da região adequadas para a área onde a placa WLAN Card é utilizada actualmente. A utilização da placa em qualquer outra região ou com uma definição de região incorrecta está proibida e pode constituir violação à lei.
- A utilização de qualquer equipamento de transmissão de rádio, incluindo uma placa WLAN Card, pode provocar interferências na funcionalidade de dispositivos médicos protegidos de forma incorrecta.
- Não utilize a placa WLAN Card em aeronaves.
- Não utilize a placa WLAN Card em postos de reabastecimento de combustível.
- Não utilize a placa WLAN Card perto de materiais ou produtos químicos inflamáveis.
- Não utilize a placa WLAN Card onde estejam a ser efectuados trabalhos de decapagem.
- Não utilize a placa WLAN Card quando a utilização de um dispositivo sem fios possa provocar interferências ou constituir perigo.
- Não utilize a placa WLAN Card onde a utilização de terminais celulares for proibida.
- Os fornos de micro-ondas degradam extremamente o desempenho da LAN sem fios. Por isso, não utilize a placa WLAN Card em ambientes onde sejam utilizados fornos de micro-ondas.

EMC Warning(Spanish)

CE Statement and Warnings :

ADVERTENCIA

Durante la instalación y el uso de esta combinación de transmisor y antenna, el límite de exposición de la frecuencia radio de 1 mW/cm² puede ser excedido junto a las antenas instaladas. Por consecuencia, el usuario deberá mantener una distancia mínima de 20 cm de la antena.

Información Importante de Seguridad

- Lea estas directrices simples. La contravención de las reglas puede ser peligrosa o ilegal. SAMSUNG no será responsable de cualquier daños causados a resultas de la contravención de las reglas.
- La tarjeta WLAN descrita en este documento fue aprobada para el uso en una red local (LAN) inalámbrica.
- Piense en hacer copias de seguridad de datos importantes.
- Durante la transferencia de datos, no desplace su ordenador. El desplazamiento entre access points (APs) puede cortar la comunicación.
- El equipo debe ser arreglado únicamente por personal de servicio cualificado.
- Todo equipo inalámbrico puede tener interferencias, que pueden afectar el funcionamiento.
- Sólo utilice accesorios aprobados. No conecte accesorios incompatibles.
- Sólo utilice accesorios aprobados por el fabricante de la tarjeta WLAN para el uso en combinación con esta tarjeta específica WLAN. El uso de otros tipos invalidará toda aprobación o garantía aplicables a la tarjeta WLAN y puede ser peligroso.
- Sólo utilice ajustes regionales aptos a la región donde la tarjeta WLAN está utilizada actualmente. El uso de la tarjeta en otra región o con ajustes regionales incorrectos está prohibido y puede ser ilegal.
- El uso de equipos radio de transmisión, incluso tarjetas WLAN, puede causar interferencias en el funcionamiento de equipos médicos sin protección suficiente.
- No utilice la tarjeta WLAN en aeronaves.
- No utilice la tarjeta WLAN en puntos de reabastecimiento de combustible.
- No utilice la tarjeta WLAN cerca de materiales inflamables o sustancias químicas.
- No utilice la tarjeta WLAN donde se efectúan explosiones.
- No utilice la tarjeta WLAN cuando el uso de equipos inalámbricos puede causar interferencias o representar un peligro.
- No utilice la tarjeta WLAN donde el uso de terminales inalámbricos está prohibido.
- Los hornos de microondas disminuyen drásticamente el funcionamiento de las LANs inalámbricas. Por esa razón, no utilice la tarjeta WLAN en un entorno en el que un horno de microondas esté en uso.



ELECTRO-MECHANICS

Specifications

Model Name	SWL-2300M	SWL-2300N	SWL-2300P	SWL-2300U
System Interface	MiniPCI Spec 1.0 (Type 3B Form Factor)	CardBus Spec 7.0	PCI Spec 2.2	USB Spec 1.1 Compliant
Frequency Band	2.400 ~ 2.4835GHz (Subject to local regulations)	2.400 ~ 2.4835GHz (Subject to local regulations)	2.400 ~ 2.4835GHz (Subject to local regulations)	2.400 ~ 2.4835GHz (Subject to local regulations)
Operating Voltage	3.3Vdc (±5%)	3.3V±5%	5V±5%	5V±5% from Host PC
Current Consumption	Receive mode : 315mA (Typical)	Receive : 310mA (Typical)	Receive : 315mA (Typical)	Receive : 220mA (Typical)
	Transmit mode: 360mA (Typical)	Transmit: 370mA (Typical)	Transmit : 360mA (Typical)	Transmit : 350mA (Typical)
Data Rate	1, 2, 5.5 or 11Mbps	1, 2, 5.5 or 11Mbps	1, 2, 5.5 or 11Mbps	1, 2, 5.5 or 11Mbps
Spreading	DSSS(Direct Sequence Spread Spectrum)	DSSS(Direct Sequence Spread Spectrum)	DSSS(Direct Sequence Spread Spectrum)	DSSS(Direct Sequence Spread Spectrum)
Output Power	15dBm(40mW) for 22MHz Bandwidth	40mW(16dBm) for 22MHz Bandwidth, 7mW/MHz	15dBm(32mW) for 22MHz Bandwidth	40mW(16dBm) for 22MHz Bandwidth, 7mW/MHz
Receive Sensitivity	-86dBm at 11Mbps (Typical)	-86dBm(Typical) at 11Mbps	-86dBm at 11Mbps (Typical)	-87dBm(Typical) at 11Mbps
Security	40-bit/128-bit WEP Encryption	40-bit/128-bit WEP Encryption	40-bit/128-bit WEP Encryption	40-bit/128-bit WEP Encryption
Antenna	SMT Ultra Miniature Coaxial Connector 2 pieces	Dual antennas supporting diversity	External 5dBi Patch Antenna with left-turn SMA connector and 1.5m cable	2 Printed on PCB Antennas (supporting Rx Diversity)
Available Drivers	Microsoft Windows 98SE/ME/2000/XP/CE	Microsoft Windows 98SE/ME/2000/XP/XPSP1	Microsoft Windows 98SE/ME/2000/XP/CE	Microsoft Windows 98SE/ME/2000/XP/XPSP1
Standards	IEEE 802.11b	IEEE 802.11b	IEEE 802.11b	IEEE 802.11b
Media Access Protocol	CSMA/CA	CSMA/CA	CSMA/CA	CSMA/CA
Temperature Range	Operating: 0~55℃ (32 ~ 131℉), Storage : -20~70℃(-4 ~ 158℉)	Operating : 0~45℃(32 ~ 113℉), Storage : -25~70℃(-13~158℉)	Operating: 0~55℃ (32 ~ 131℉), Storage : -20~70℃(-4 ~ 158℉)	Operating: 0~45℃(32~113℉), Storage : -25~70℃(-13~158℉)
Humidity	10% to 90% Non-condensing	10% to 90% Non-condensing	10% to 90% Non-condensing	10% to 90% Non-condensing
Operating Range (1024 bytes file transfer)	Open Space : 150m(500ft) at 11Mbps, 200m(660ft) at 2Mbps Closed Office: 30m(100ft) at 11Mbps, 50m(160ft) at 2Mbps	Open Space : 150m(500ft) at 11Mbps, 200m(660ft) at 2Mbps Closed Office: 30m(100ft) at 11Mbps, 50m(160ft) at 2Mbps	Open Space : 150m(500ft) at 11Mbps, 200m(660ft) at 2Mbps Closed Office: 30m(100ft) at 11Mbps, 50m(160ft) at 2Mbps	Open Space : 150m(500ft) at 11Mbps, 200m(660ft) at 2Mbps Closed Office: 30m(100ft) at 11Mbps, 50m(160ft) at 2Mbps
Dimensions	59.6□×44.6□×5.0□	109mm×54mm×5mm	126.8□×70.0□×18.0□	114mm×52mm×15mm & 1.2M Cable with USB A-type Connector
Certification & Regulatory Approvals	Korea	Wi-Fi certified Korea FCC R&TTE, 15 EU & 4 EFTA Countries Notifications completed	Wi-Fi certified Korea, FCC, R&TTE	Wi-Fi certified, Korea, USA(FCC), Canada(IC), R&TTE Approval(CE) and 15 EU & 4 EFTA Countries Notifications completed,

Wireless LAN Card driver & utility Installation Procedure.

1. If you insert the MagicLAN Installation CD into the CD-ROM drive, software will launch automatically. Then, click on the **'Install MagicLAN Driver'**.



2. You can see the pictures of Wireless LAN Cards according to model names. Click on the model name to install it's driver.



3. You can see the list of Operating System in the right screen. Click on the Operating System that your computer system is using. You can click **Continue Anyway or Yes** in the 'Hardware Installation' Message box or in the 'Digital Signature Not Found' Message box.



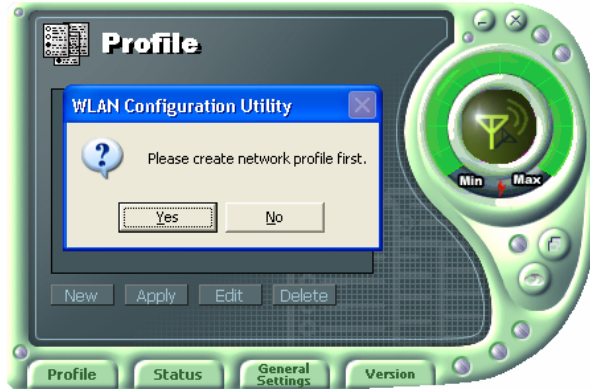
4. After installing driver, click on 'MENU' and 'Install Configuration Utility' and you can install configuration utility. After installing driver and utility, insert Wireless LAN Card.(notice that in case of PCI product like SWL-2300M/P , you must power off before inserting Wireless LAN Card into the system)



5. Your computer system recognizes the Samsung Wireless LAN Card. If **Found New Hardware Wizard** appears, just click **Next** to install the driver.

6. Now you can see MagicLAN tray icon(📶) at the right bottom of your computer screen. In Windows 2000 or XP, you must reboot the system to see the tray icon.

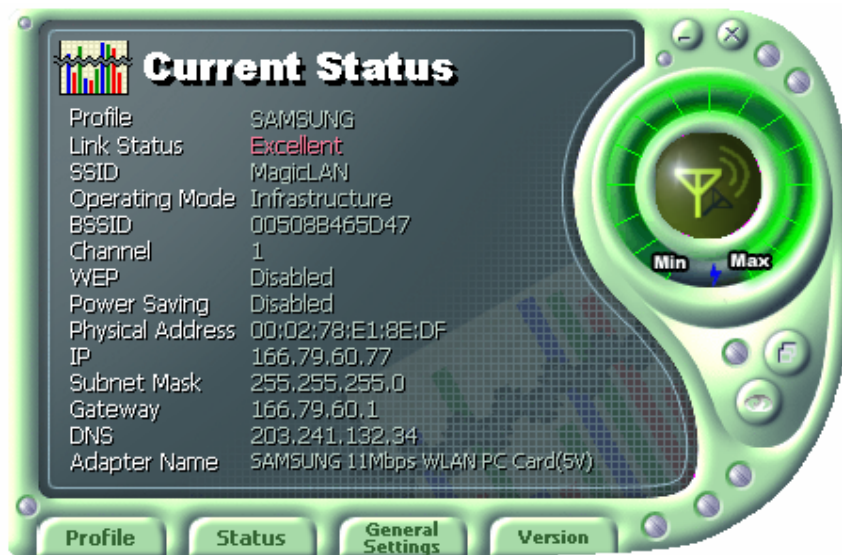
7. Click MagicLAN tray icon(📶). Then the utility requests you to create or select the new profile. You can follow the instructions to use Wireless LAN as peer-to-peer(802.11 Ad-hoc) or infrastructure communications.



For more details about Windows CE, click on the “View User’s Guide”.

Main Window of Wireless LAN Configuration Utility

After finishing the installation of Samsung Wireless LAN Card driver and configuration utility, you can see the tray icon at the right bottom of your computer screen. Clicking on that icon, you will see the graphical main window of configuration utility.



Profile: Profile is the name of the current profile that configuration utility is using.

Link Status : Link Status explains whether the client station is well connected or not to Access Point in infrastructure mode or master station in ad-hoc mode .



SSID : SSID is the name of the network that your computer system is connected to.

Operating Mode : Operating mode describes the topology of the network that your client station is connected to. You can choose infrastructure mode or ad-hoc mode.

BSSID : BSSID is the physical address of Access Point in case of infrastructure mode and the randomly generated value in case of 802.11 Ad-hoc mode.

Channel : Channel shows the channel number that is the channel in use for the communications between the clients and AP or between the clients only. In case of the Infrastructure/802.11 Ad-hoc Mode, the channel number is scanned automatically (You don't need to set the channel number).

WEP : WEP shows that WEP encryption is enabled or disabled. When WEP is enabled, your computer system protects the illegal access to the encrypted wireless networks.

Power Saving : Power Saving shows that Power Saving Mode is enabled or disabled.

Physical Address : Physical Address(MAC Address) is the unique identification number (6 bytes in size) for the Wireless LAN card.

IP Address : IP Address is an address used to send data from one computer to another to create the network of several computers. IP address is unique for every network card installed on a computer to identify it from other computers.


Subnet Mask : Subnet Mask is an address that enables along with an IP Address to share a network Address within the LAN of company.

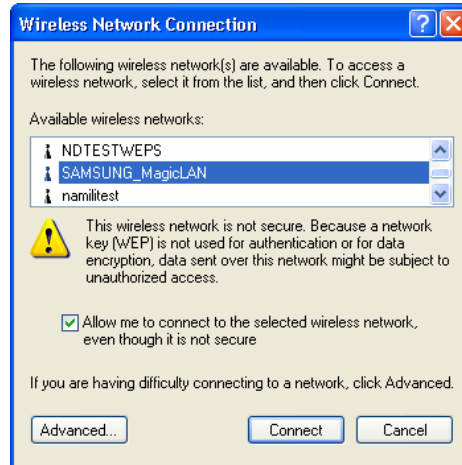
Gateway : Gateway is a network point playing a role as a gateway to enter the other network.

DNS : DNS is the system that transforms the name of an Internet domain to the corresponding IP Address. IP Address is actually needed to locate a computer/server on the Internet.

Adapter Name : Adapter name shows the kind of WLAN card that the user is using now.

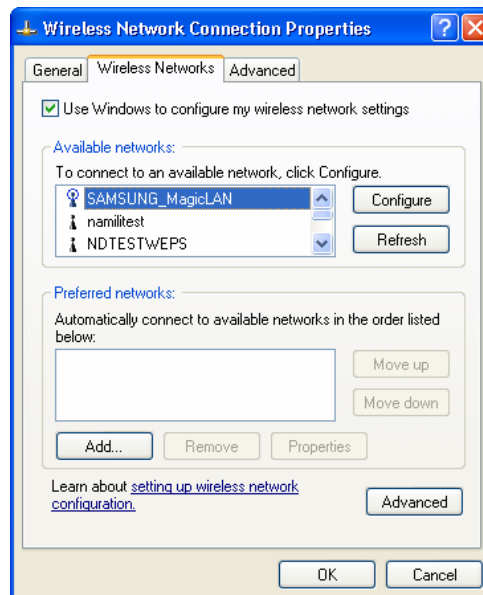
Zero Configuration of Windows XP

1. Click **Wireless Network Connection** icon  displayed on the right bottom of desktop.

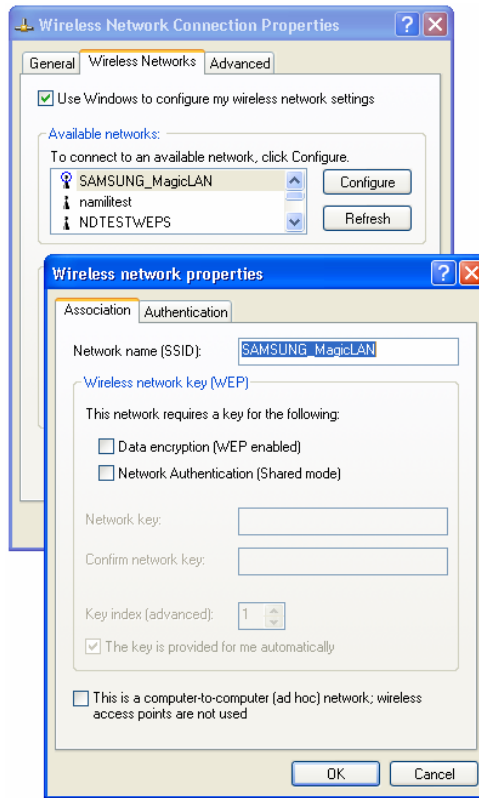


2. When you are using DHCP, just select one of Access Points in the **Available wireless networks** in **Wireless Network Connection** dialog window.

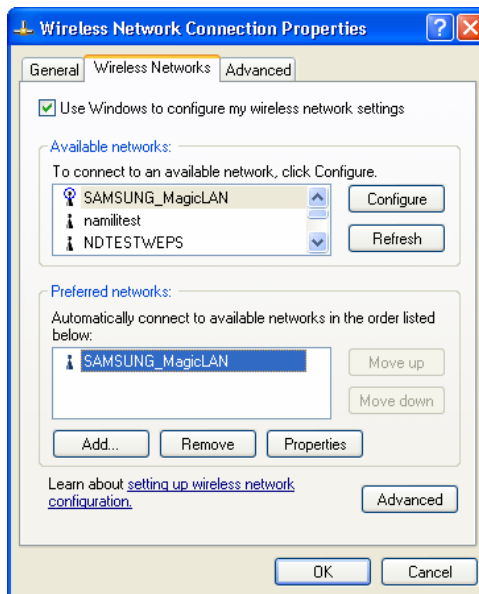
3. To manually set IP address, WEP and other wireless configuration, click on **Advanced** of **Wireless Network Connection** dialog window and select **Wireless Networks** in **Wireless Network Connection Properties** dialog window.



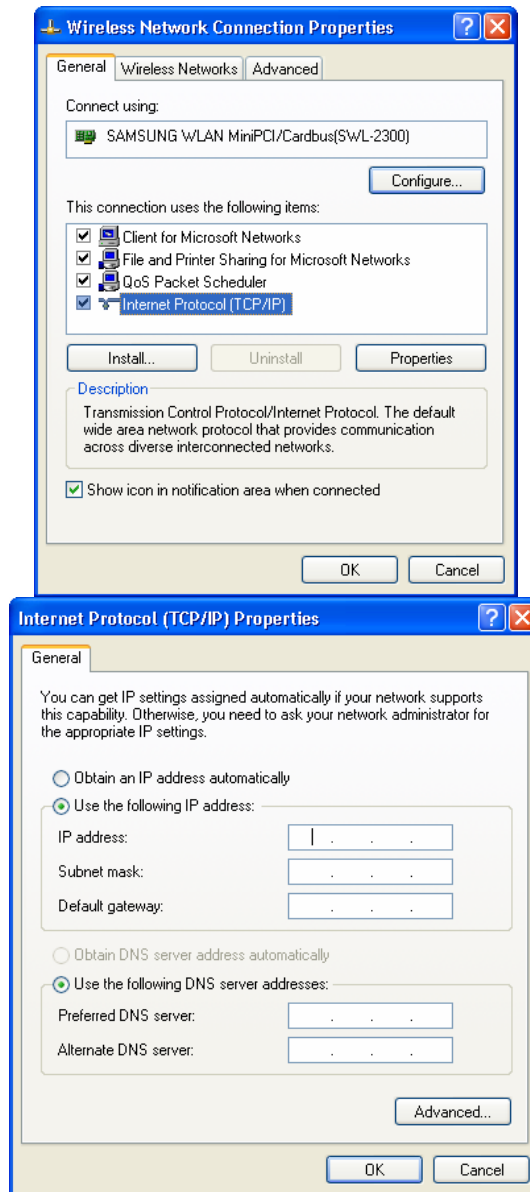
4. After selecting one of the **Available networks**, click **Configure**. Set the SSID and parameters that you want to modify and then click on **OK**.



5. The Access Point that you selected will be displayed on the **Preferred Networks** in **Wireless Network Connection Properties** dialog window



6. Click on the **General** Tab. After double-clicking the “**Internet Protocol(TCP/IP)**”, set TCP/IP parameters such as IP Address, Gateway and DNS. Then click on OK in **Internet Protocol(TCP/IP) Properties** dialog window. Finally, click on **OK** in **Wireless Network Connection Properties** dialog window.





ELECTRO-MECHANICS

Available Channels of Wireless LAN

Channel	Frequenc	Korea	FCC	Canada	ETSI	Spain	France	Japan
1	2412MHz	○	○	○	○	○		○
2	2417MHz	○	○	○	○	○		○
3	2422MHz	○	○	○	○	○		○
4	2427MHz	○	○	○	○	○		○
5	2432MHz	○	○	○	○	○		○
6	2437MHz	○	○	○	○	○		○
7	2442MHz	○	○	○	○	○		○
8	2447MHz	○	○	○	○	○		○
9	2452MHz	○	○	○	○	○		○
10	2457MHz	○	○	○	○	○	○	○
11	2462MHz	○	○	○	○	○	○	○
12	2467MHz	○			○	○	○	○
13	2472MHz	○			○	○	○	○
14	2484MHz							○



□ □ □ □ 1

□ □□□□□ □□□□□ □ □ □ □□ □ □ □□□□ □ □□□ □ □ □ □ □ □ □□□□ □□□□ □ □□□.

□ □□□□□ □□ □ □ □ □ □ □□□. □□□□ □□□□ □□□□ □ □ □□ □□□□ □□□□ □□□ □□□ □ □ □□□.

□ □□□□□ □□□, □□, □□□, □□ □□ □ □ □□□□ □□□□.

□□□□□□ □□ □□□ □ □ □□ □□□□ □ □□□□□ □□ □□□, □□, □□□, □□ □□ □□ □□ □□□ □ □□□.

□□□□ □□□ □ □ □□□□□□□.

Microsoft, MS-DOS, Windows, □□□ Windows NT □ Microsoft Corporation □ □□□□□□.

□□ □□ □ □ □□□ □ □ □ □ □□□ □□□□ □ □□□.
<http://www.MagicLAN.co.kr/>

□□□□
Tel : +82-31-218-2416,8,9,20 Fax : +82-31-218-2431

□□□□
Tel : +82-31-218-2442~6 Fax : +82-31-218-2414

Copyright © 1999-2003 Samsung Electro-Mechanics, Co., Ltd.
All rights reserved.

□ □ □ □ 2

- □□□ □□ □ □ □□ □ □ □ □ □□□. □□ □□ □□□ □□□ □□□ □ □ □□, □□ □□□ □□□ □ □ □□□. □□ □□ □□□□ □□□ □□□□ □□□□ □□□□ □□□□.

Spreading	DSSS(Direct Sequence Spread Spectrum)	DSSS(Direct Sequence Spread Spectrum)	DSSS(Direct Sequence Spread Spectrum)	DSSS(Direct Sequence Spread Spectrum)
Output Power	15dBm(40mW) for 22MHz Bandwidth	40mW(16dBm) for 22MHz Bandwidth, 7mW/MHz	15dBm(32mW) for 22MHz Bandwidth	40mW(16dBm) for 22MHz Bandwidth, 7mW/MHz
Receive Sensitivity	-86dBm at 11Mbps (Typical)	-86dBm(Typical) at 11Mbps	-86dBm at 11Mbps (Typical)	-87dBm(Typical) at 11Mbps
Security	40-bit/128-bit WEP Encryption	40-bit/128-bit WEP Encryption	40-bit/128-bit WEP Encryption	40-bit/128-bit WEP Encryption
Antenna	SMT Ultra Miniature Coaxial Connector 2 pieces	Dual antennas supporting diversity	External 5dBi Patch Antenna with left-turn SMA connector and 1.5m cable	2 Printed on PCB Antennas (supporting Rx Diversity)
Available Drivers	Microsoft Windows 98SE/ME/2000/XP/CE	Microsoft Windows 98SE/ME/2000/XP/XPSP1	Microsoft Windows 98SE/ME/2000/XP/CE	Microsoft Windows 98SE/ME/2000/XP/XPSP1
Standards	IEEE 802.11b	IEEE 802.11b	IEEE 802.11b	IEEE 802.11b
Media Access Protocol	CSMA/CA	CSMA/CA	CSMA/CA	CSMA/CA
Temperature Range	Operating: 0~55℃ (32~131℉), Storage: -20~70℃(-4~158℉)	Operating: 0~45℃(32~113℉), Storage: -25~70℃(-13~158℉)	Operating: 0~55℃ (32~131℉), Storage: -20~70℃(-4~158℉)	Operating: 0~45℃(32~113℉), Storage: -25~70℃(-13~158℉)
Humidity	10% to 90% Non-condensing	10% to 90% Non-condensing	10% to 90% Non-condensing	10% to 90% Non-condensing
Operating Range (1024 bytes file transfer)	Open Space : 150m(500ft) at 11Mbps, 200m(660ft) at 2Mbps Closed Office: 30m(100ft) at 11Mbps, 50m(160ft) at 2Mbps	Open Space : 150m(500ft) at 11Mbps, 200m(660ft) at 2Mbps Closed Office: 30m(100ft) at 11Mbps, 50m(160ft) at 2Mbps	Open Space : 150m(500ft) at 11Mbps, 200m(660ft) at 2Mbps Closed Office: 30m(100ft) at 11Mbps, 50m(160ft) at 2Mbps	Open Space : 150m(500ft) at 11Mbps, 200m(660ft) at 2Mbps Closed Office: 30m(100ft) at 11Mbps, 50m(160ft) at 2Mbps
Dimensions	59.6mm×44.6mm×5.0mm	109mm×54mm×5mm	126.8mm×70.0mm×18.0mm	114mm×52mm×15mm & 1.2m Cable with USB A-type Connector
Certifications & Regulatory Approvals	Korea, FCC, R&TTE, 15 EU & 4 EFTA Countries Notifications completed	Wi-Fi certified Korea FCC R&TTE, 15 EU & 4 EFTA Countries Notifications completed	Wi-Fi certified Korea, FCC, R&TTE	Wi-Fi certified, USA(FCC), Canada(IC) R&TTE Approval(CE) and 15 EU & 4 EFTA Countries Notifications completed, Korea : R-LARN-03-0101

□□□ □□ □□□□ □ □□□□ □□ □□.

1. □□□□ CD□ □□□□, □□ □□□□□. □□□, 'MagicLAN Driver □□'□ □□□□□□.



2. □□ □□ □□□□ □□ □□□ □□ □ □□□, □□□□□ □□□□ □□□□ □□ □□□

□□□□ □□□□.



3. □□ □□□□ □□□ Operating System□□□ □□□□□ □□ OS□ □□□□□. □□ □□□ □□ '□□□□□ □□' □□ '□□□□ □□□ □□ □ □□' □□□ □□□ □□□□□ '□□' □□ '□' □ □□□□□□.



4. □□□□ □□ □, 'MENU' □□□ 'Configuration Utility □□' □ □□□□ □□□□□ □□□□□. □□□□□ □□□□ □□□ □□□ □□□□□□. (□□: SWL-2300M/P□ □□ PCI □□□ □□□ □□□ □□ □□□ □□□□ □□□.)



5. □□□ □□□□, '□ □□□□ □□ □□□'□ □□ '□□'□ □□□ □□□□□ □□□□□.

6. 이 단락을 완료한 후 () 버튼을 누릅니다. Windows 2000 XP에
이 단락을 완료한 후 버튼을 누릅니다.

7. 이 단락을 완료한 후 () 버튼을 누릅니다. "이 단락을 완료한 후" 버튼을 누릅니다. 이 단락을
완료한 후, 802.11 ad-hoc)에 infrastructure 모드
로 설정합니다.



Windows CE에 이 단락을 완료한 후 CD에 '이 단락을 완료한 후' 버튼을
누릅니다.



이 단락을 완료한 후 이 단락을 완료한 후 버튼을 누릅니다. 이 단락을
완료한 후, 이 단락을 완료한 후 버튼을 누릅니다. 이 단락을
완료한 후 이 단락을 완료한 후 버튼을 누릅니다.





ELECTRO-MECHANICS

□□□□ □□ □ □□□□ □□□□ □ □ □□ □ □□□□ □□□□ □□□□.

□□□□ : □□□□ □□□□ □□□□ □□□□, □□□□ □□□□□□ □□□□ □□ □□□ □□□□ □□□□. □□□□ □□□ □□□□□□ □□ □ □□□ □□ □□□ □ □□□ □ □□ □□ □□□□□□.

□□□□ : Link Status □ □□□□□□□ ESS □ □□□□ □□ □□□ □□□□□. (□□□ AP □ 802.11Ad-hoc □□ AP/Station □□ □□ □□□ □□□□□)

SSID : SSID □□□□ □□ □ □□□□□ □□□□ □□ □□ □□□□ □□□□, ESSID □□□□ □□□□.

□□□□ : Infrastructure □□(AP □ □□ □ □□□□□□□□ □□), 802.11Ad-hoc/Ad-hoc □□(□ □□□□□□□□□ □□□□) □□□□ □□□□.

BSSID : Infrastructure Mode □□□□ AP □ Physical Address □ □□□□ 802.11 Ad-hoc □□□□ Random Generation □□ □□□□.

□□ : □□ □ □□□□□□ □□□□□□□□ AP □□ □□□□□□□ □□□□□□ □□□□ □□ □□ □□□□ □□□□. □□□□□□ □□□□ infrastructure/802.11Ad-hoc □□ □□□□ □□ □□ □□□ □□□□ □□ □□□□.

WEP : AP □ □ □□□□□□□ □□□□ □□ □□ □□ □□□□□□. □ □□□□□□□□□ □□□□ □□ □□□ □□□□ □□□□□□ □□□□□□.

□□□□ : □□ □□□□(power saving)□ □□□ □□□□□□.

Physical Address : □□ □□□□ □□ LAN □□□□ □□□□ Physical □□□□□□ □□□□□□.

IP □□ : □□□□□□ □ □□□□□ □□ □□□□ □□□□ □□□□ □□□□□□□□, □□□□□□ □ □□□□□ □□ □□□□ □□□ □ □□□ □□□ □ □ □□□ □□□ □□□ □□□□.

□□□□ □□□□: □□□□ LAN □□□□ □ □□□□□□ □□□□ □□ □□□ □□ □□□□ IP □□□□ □□□□ □□□□.

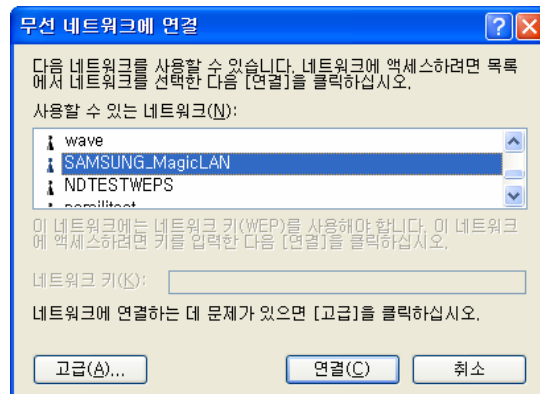
□□□□□□ : □□ □□□□□□ □□□□ □□ □□□ □□ □□□□ □□□□□□.

DNS : □□□□ □□□□ □□□□ □□□□ □□□□ □□ IP □□□□ □□□□□□ □□□□□□□□. □□□□ □□□□ □□□□ □□□□ □□□□ □□□□ □□□□ □□□□, □□□□ □□ □□□□□□□□, □□□□□□ □□ □□□□□ □□□ □□ □□□□ □□ □□□□ □□□□□□.

□□□□ □□□□ : □□ □□□□ □□□□ □□ □ □□□ □□□□ □□□□□□.

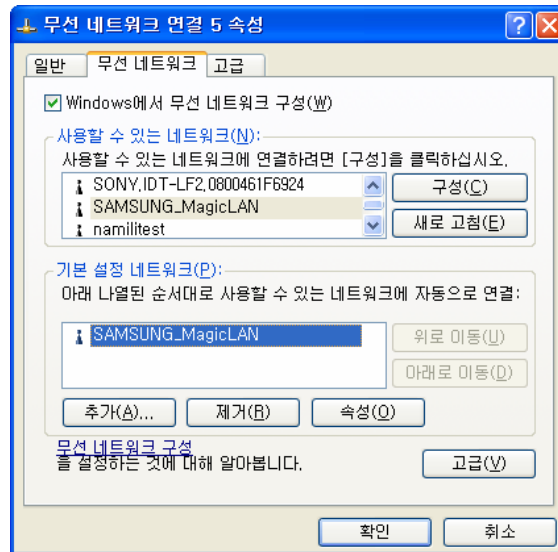
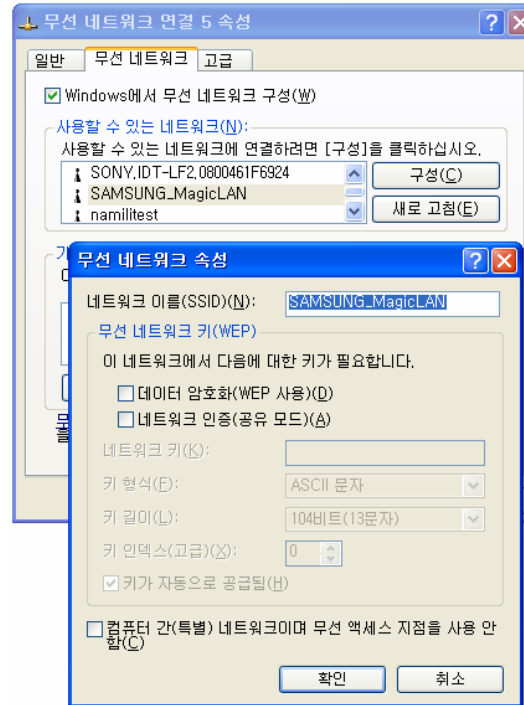
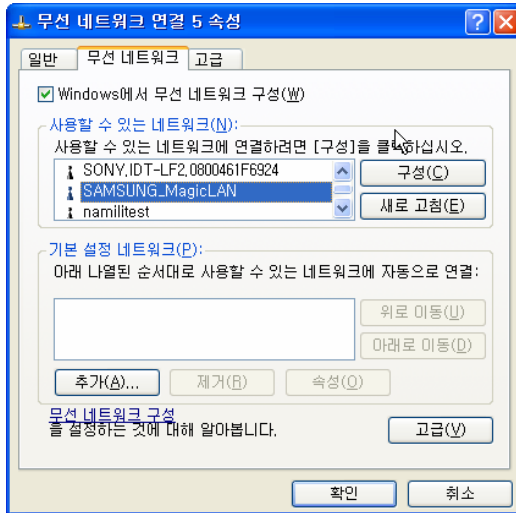
Windows XP Zero Configuration

1. Windows XP의 System Tray Icon에 'SAMSUNG MagicLAN' 아이콘을 표시합니다.



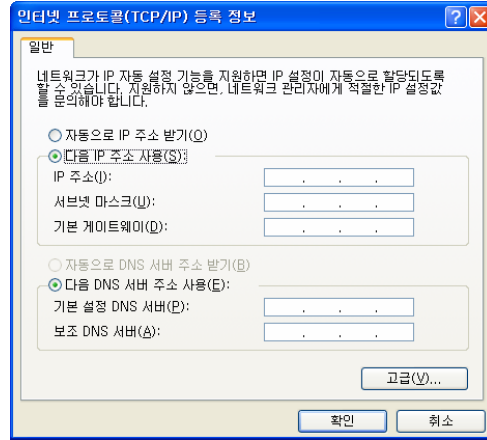
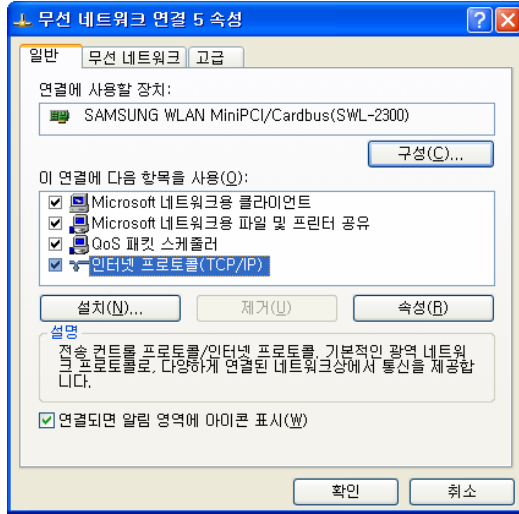
2. DHCP를 사용하여 IP 주소를 자동으로 할당받도록 설정합니다. DHCP를 사용하지 않고 IP 주소를 수동으로 입력하려면 '고급' 버튼을 클릭하여 '고급 설정' 탭으로 이동합니다.

3. IP 주소, WEP 키, SSID 등을 수동으로 입력합니다. '고급' 버튼을 클릭하여 '고급 설정' 탭으로 이동합니다. '고급 설정' 탭에서 '네트워크 키' 필드에 WEP 키를 입력하고, '네트워크 이름' 필드에 SSID를 입력합니다. '고급 설정' 탭에서 '네트워크 키' 필드에 WEP 키를 입력하고, '네트워크 이름' 필드에 SSID를 입력합니다. '고급 설정' 탭에서 '네트워크 키' 필드에 WEP 키를 입력하고, '네트워크 이름' 필드에 SSID를 입력합니다.



4. □□□, '□□'□□ □□□□ '□□□□ □□□□ (TCP/IP) □ □□□□□□□ IP□□, □□□□□□, DNS

□□□□ □□□ □ \□□/□□□ □□□□ □□ □ \□□/□□□ □□□□ □□ □□□□ □□ □□□□.



□□□□ □□□ □□ □□

□□	□□□□	□□	□□	□□□	□ □	□□□	□□□	□ □
1	2412MHz	○	○	○	○		○	○
2	2417MHz	○	○	○	○		○	○
3	2422MHz	○	○	○	○		○	○
4	2427MHz	○	○	○	○		○	○
5	2432MHz	○	○	○	○		○	○
6	2437MHz	○	○	○	○		○	○
7	2442MHz	○	○	○	○		○	○
8	2447MHz	○	○	○	○		○	○
9	2452MHz	○	○	○	○		○	○
10	2457MHz	○	○	○	○	○	○	○
11	2462MHz	○	○	○	○	○	○	○
12	2467MHz	○			○	○	○	○
13	2472MHz	○			○	○	○	○
14	2484MHz							○