

Notice 1

USER INFORMATION

Acknowledging Special Precautions and the FCC Industry Canada Notice

Cautions

Modifications not expressly approved by the party responsible for compliance could void the user's authority to operate the equipment.

FCC compliance Information

When used the This device complies with part 15 of FCC Rules.

Operation is subject to the following two conditions:

1. This device may not cause harmful interference, and
2. This device must accept any interference received.

Including interference that may cause undesired operation.

Information to User

This equipment has been tested and found to comply with the limits for a Class B digital device, Pursuant to part 15 of the FCC Rules. These limits are designed to provide reasonable protection against harmful interference in a residential installation.

This equipment generates, uses and can radiate radio Frequency energy and, if not installed and used in accordance with the instructions, may cause harmful interference to radio communications.

However, there is no guarantee that interference will not occur in a particular installation. If this equipment does cause harmful interference to radio or television reception, which can be determined by turning the equipment off and on, the user is encouraged to try to correct the interference by one or more of the following measures:

- ? Reorient or relocate the receiving antenna.
- ? Increase the separation between the equipment and receiver
- ? Connect the equipment into an outlet on a circuit different from that to which the receiver is connected.

Consult the dealer or an experienced radio/TV technician for help.

Notice 2

This device(MagicLAN SWL-2600C) is product to supply to Hauppauge Computer Works, Inc (Model : MediaMVP)

Copyright © 1999 - 2005 SAMSUNG Electro-Mechanics Co., Ltd.
All rights reserved.

Notice 3

WARNING

While installing and operating this transmitter and antenna combination the radio frequency exposure limit of $1\text{mW}/\text{cm}^2$ may be exceeded at distances close to the antennas installed. Therefore, **the user must maintain a minimum distance of 20 cm from the antenna.**

Important Safety Information

- Read these simple guidelines. Breaking the rules may be dangerous or illegal. SAMSUNG will not be responsible for any damages caused by breaking the rules.
- WLAN Card described in this document is approved for use in a wireless local area network.
- Remember to make backup copies of important data.
- Only qualified service personnel must repair the equipment.
- All wireless devices may get interference, which could affect performance.
- Use approved accessories only. Do not connect incompatible products.
- Use only accessories approved by the WLAN Card manufacturer for use with this particular WLAN Card. The use of any other types will invalidate any approval or warranty applying to the WLAN Card, and may be dangerous.
- Use only the region settings appropriate for the area where the WLAN Card is used at the present time. Using the card in any other region or with an incorrect region setting is prohibited and may be illegal.
- Operation of any radio transmitting equipment, including a WLAN Card, may cause interference with the functionality of inadequately protected medical devices.

Card Standard & Mechanical Spec			
1.Card Standard		CF+ CompactFlash Specification Revision 2.0	
2. Form Factor		Type I	
3. Operating voltage		3.3 V	
4. Dimension		56.4 mm × 42.8 mm × 3.3 mm	
5. Weight		18g	
RF Characteristics			
1.Specification Compliance		IEEE 802.11g Draft 7.1 (CSMA/CA)	
2. Data Rate & Modulation	ERP-DSSS/CCK	1Mbps(DBPSK) / 2Mbps(DQPSK) / 5.5, 11Mbps(CCK)	
	ERP-OFDM	6, 9Mbps(BPSK) / 12, 18Mbps(QPSK) / 24, 36Mbps(16-QAM) / 48, 54Mbps(64-QAM)	
3. TX output power	ERP-DSSS/CCK	1 ~ 11 Mbps	17.5 dBm
	ERP-OFDM	6 ~ 54 Mbps	15 dBm (EVM < 5%)
4.RX Sensitivity	ERP-DSSS/CCK	11 Mbps	-84 dBm
		5.5 Mbps	-87 dBm
		2 Mbps	-90 dBm
		1 Mbps	-93 dBm
	ERP-OFDM	6 Mbps	-88 dBm
		9 Mbps	-86 dBm
		12 Mbps	-85 dBm
		18 Mbps	-83 dBm
		24 Mbps	-80 dBm
		36 Mbps	-77 dBm
48 Mbps	-72 dBm		
54 Mbps	-70 dBm		
5. Current consumption	TX	Typical 420 mA	
	RX	Typical 390 mA	
6. Coverage	ERP-DSSS/CCK	TBD	
	ERP-OFDM	TBD	

MediaMVP

Quick Installation Guide

M-MediaMVP -v2-ENG 04/11/05

Contents of the MediaMVP package

MediaMVP device and stand

Ethernet cable for connection between the MediaMVP and your Router, Hub or Switch. This uses RJ-45 connectors and is 1.5 meters long. *

Video cable set to connect the MediaMVP to your TV set. The cable set includes Composite video (yellow RCA jack), Left Audio (white RCA jack), Right Audio (red RCA jack).

Remote control transmitter with 2 A A A batteries

MediaMVP Installation CD-ROM with:

MediaMVP Server application
MediaMVP Application
Search for Media application

* Note: you can purchase longer ethernet cables at most computer retail stores. Cat5 cable, as the cabling is commonly called, is available to lengths of 300 ft.



Overview of MediaMVP



MediaMVP bridges the home PC with television sets. MediaMVP is located at the TV set, and through your home local area network receives digital audio (MP3, W M A and W AV music), digital video (MPEG-1, MPEG-2 or DivX video), digital pictures (JPEG, BMP and GIF digital pictures) and Internet radio from a PC. MediaMVP then decodes the digital media and displays the decoded media on a TV set, TV monitor or plasma monitor. On your TV set, MediaMVP lists media which can be played.

MediaMVP can be connected to your local area networks via either its 10/100Mbps Ethernet connection or the built-in 54Mbps 802.11g wireless adaptor . It can also connect to Ethernet based LAN adapters such as Home Plug or wireless game adapters. The PC where both the MediaMVP software is loaded plus where your media files are located needs to be on the same network node as the MediaMVP. In general, if you have the PC and the MediaMVPs connected to the same network hub, access point or router, this requirement is satisfied.

Up to 12 MediaMVPs can be connected on a network. This means you can have a MediaMVP connected to the TV in your bedroom, one to the TV in the living room, one in the den, etc. The only limitation is that all the MediaMVPs need to be on the same network segment as the PC where your MediaMVP files are stored.

Internet radio is played by having the PC connect to an Internet radio station and then send streaming MP3 or W M A audio from the radio station to the MediaMVP. Only internet radio stations which are directly accessible via the Internet are supported.

DivX video playing is done via a transcode process. When you chose to play a DivX video, your PCs processor first decodes the DivX video in software, then reencodes the video into a high bit-rate MPEG-1 format. The PC then transmits the high bit-rate MPEG video over your network to the MediaMVP, where it is decoded and played on your TV set.

Technically speaking

MediaMVP's CPU engine (a 350 DMIPS PowerPC) runs the Linux operating system, plus has dedicated multimedia hardware for decoding MPEG video, audio and music.

MediaMVP runs in a client/server system, where the server can be a PC running either Windows XP Home, XP Professional or Windows 2000. The PC can be used for normal tasks while acting as the MediaMVP server. The application running on the MediaMVP is loaded from the PC when you turn on MediaMVP's power, therefore allowing updateable software via Internet downloads.

MediaMVP decodes full CCIR601 resolution NTSC and PAL encoded MPEG-2 bit streams in real time, up to and including 720x480 (NTSC) or 720x576 (PAL). MPEG video rates range from 1.5 Mbps to 10 Mbps (higher in bursts), limited by the LAN bandwidth. MediaMVP will upscale 320x240 V C D video to full screen. A tunable Anti-Flicker Filter is included to improve the video quality of media seen on the TV set.

Step 1: Connecting MediaMVP to your network or PC

You can connect MediaMVP to your PC through a network or directly to the PC or laptop. You can use either method.

Connecting MediaMVP through a Network:

- **Wired connection**

Using a standard Ethernet network cable (the Ethernet cable supplied or any Ethernet cable less than 300 feet long), plug one end into the LAN port of the MediaMVP, and the other end of the Ethernet cable into a Ethernet port of a network hub, router or switch. You can use 10Mbit or 100Mbit router/switches. If you are using your own cables, use Category 5 Ethernet cable for best results.

Note: the MediaMVP needs to be on the same network subnet as the PC where you loaded the MediaMVP Server application. Therefore, plug the MediaMVP into the same router as you've plugged your PC. If you have multiple routers, with the PC on a different router than the MediaMVP, the MediaMVP will not load the MediaMVP application.

- **Wireless connection**

When connecting MediaMVP to your network in wireless mode the only thing you need to make sure is that the wireless access point you are going to connect to is turned on.

Connecting MediaMVP directly to a PC or laptop:

- **Wired connection**

If you would like to connect MediaMVP directly to a PC or laptop, you will need a crossover cable. You cannot use a standard Ethernet cable to directly connect the MediaMVP to a PC or laptop.

Please see the section entitled "Connecting MediaMVP to a PC or laptop".

- **Wireless connection**

In order to connect MediaMVP directly to a PC or laptop wirelessly, you will need to have a wireless adapter installed on your PC or laptop and configure the operating mode to "Ad-Hoc" mode.

Please see the section entitled "Connecting MediaMVP to a PC or laptop wirelessly".

Step 2: Connecting MediaMVP to your TV set

Connecting to a TV set:

Note: Your TV set needs to have A/V input jacks. If your TV only has RF inputs (normally from a TV antenna), then you will need to use a Video -to -RF modulator, which can be purchased from RadioShack.

Using the supplied Video cable set, connect one end of the Composite video (yellow RCA jack) cable to the yellow jack on the MediaMVP and connect the other end to the Video Input jack on your TV set.

Connect one end of the Left Audio (white RCA jack) cable to the white jack on the MediaMVP, and connect the other end to the Left Audio input on your TV set.

Connect one end of the Right Audio (red RCA jack) cable to the red jack on the MediaMVP, and connect the other end to the Right Audio input on your TV set.



Note: If your TV set has only one audio input, use just MediaMVP's Left audio cable.

On your TV set:

To use the MediaMVP, you need to select the Video Input on your TV set. Each TV set does this differently, but many TV sets have a button marked TV/Video . Clicking this button normally switches from the TV tuner inside your TV set to the Audio/Video inputs being used by MediaMVP. Some TV sets have a TV/Video button on the remote.

If you cannot find a way to switch to Video Input on your TV set, refer to the TV set manual.

Step 3: Installing the MediaMVP software on your PC

When you have made all your network and TV connections, boot your PC and run the MediaMVP Setup program from the MediaMVP Installation CD-ROM.

Click the Start button, then Run and then the drive letter of your CD-ROM drive (for example: D:\), then Setup.EXE

This should take a few minutes and is automatic.

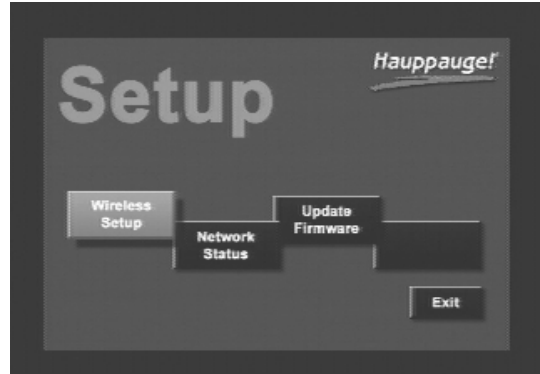
Step 4: Power on the MediaMVP

After the MediaMVP Setup program has been run, turn on the MediaMVP by plugging in the power adapter.

By default, MediaMVP will check for your Ethernet connectivity to decide whether or not to enter the wireless setup page.

Wired mode (RJ45 cable plugged in):

If MediaMVP detects the Ethernet connection (RJ45 Ethernet cable is plugged in), it will bypass the wireless setup page and start to load client application. No configuration required.



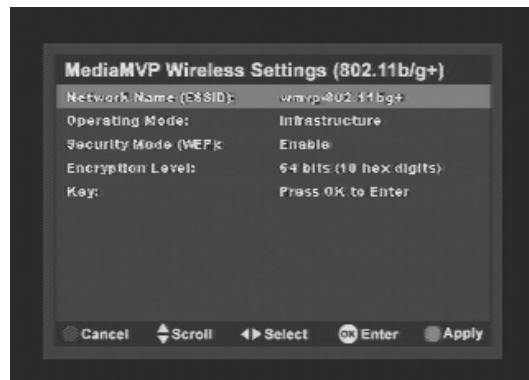
Wireless mode (RJ45 cable unplugged):

MediaMVP will enter the "Setup" page automatically if it detects no Ethernet connection is present.

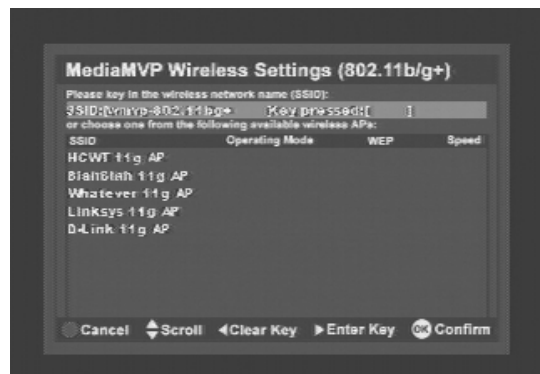
When operating in wireless mode, MediaMVP automatically connects to the closest, unsecured (WEP turned off) wireless access point (or one has the strongest signal strength) by default. Therefore, no other setting is required to get your MediaMVP up and running. You can enter the "Network Status" page to see if MediaMVP is connected to the desired wireless access point by checking if the current SSID matches your access point's SSID.

If MediaMVP does not connect to the desired wireless access point, you can go to the "wireless setup" page on the main manual to change it.

On the wireless setup screen (see left) Press "OK" on the "Network Name (ESSID)" field to enter the SSID setting page.



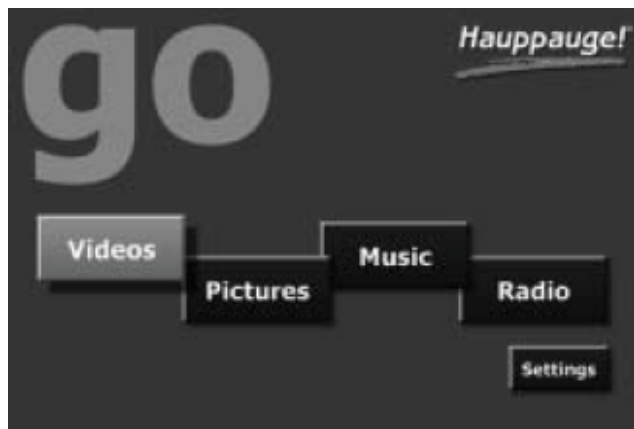
On the SSID setup screen (see left), either use the remote control to key in the desired SSID or simply choose a wireless access point you wish to connect to from the list below.



Now go back to the main manual and go to "Exit" to start the main application.

MediaMVP will then display the following messages on your TV set:

1. Contacting DHCP Server
2. Contacting MediaMVP Bootserver
3. Loading application
4. Starting application
5. Contacting server
6. Go menu



You are now ready to experience digital media on your TV set!

If you cannot get beyond "Contacting DHCP Server": you are not connected to your hub, router or access point, or your cabling is defective. If you are directly connecting your MediaMVP to a PC and you get this message continuously, then you might be either, in wired mode, using a straight through ethernet cable instead of the crossover cable or, in wireless mode, did not correctly configure the wireless adaptor on your laptop or PC.

If you cannot get beyond "Contacting MediaMVP Bootserver": your PC might be protected by a firewall, or the MediaMVP services have not started on your PC. Turn off your firewall to see if this is causing this problem, and if so, you need to re-configure your firewall to allow the MediaMVP to access your PC (see Troubleshooting section).

Note: if you need to reboot MediaMVP, remove the power plug from MediaMVP, wait 5 seconds and plug it back in.

If you have a Firewall on your network

Step 4: Power on the MediaMVP

Many people install firewalls on PC networks to prevent unauthorized access to data in your PC. If you have a firewall such as Zone Alarm, you will need to configure the firewall to allow the MediaMVP to access a server application running on your PC.

ZoneAlarmPro Firewall

There are four firewall alert menus which pop up during the first use of MediaMVP. For each of these alerts, you should allow access by clicking Yes. Examples of warning messages are in the Troubleshooting section. To avoid warning messages from popping up each time you use MediaMVP, select "Remember this answer".

There are two MediaMVP services which will require access to your network: HcwSMS.exe and MVPMedia.exe Grant access to both of these programs.

The built-in Windows XP Firewall

Currently you need to disable this firewall for the MediaMVP to work correctly. Instructions to do this are in the Troubleshooting section. Please check our web site for updates which might allow the Windows XP Firewall to operate at the same time as the MediaMVP.

Searching for media on your PC

After installing the MediaMVP, there are two ways of finding media on your PC. You can either manually search for media from the TV set using MediaMVP's Settings menu, or you can automatically search for media using the MediaMVP Search for Media program on your PC.

To start the Search Folders program from the PC, click Windows Start, then Programs, and under Hauppauge MediaMVP run the Search Folders program.

You will see a menu which allows you to select the Media Type (music, videos, pictures) and the directories to be searched.

Select the Media Type and the Search In directory (choose My Computer to look in all directories) and click Search.

Once you start the search, any directory with the media type selected will appear in the Search Results box.

To add a directory, click on it and then click Add.



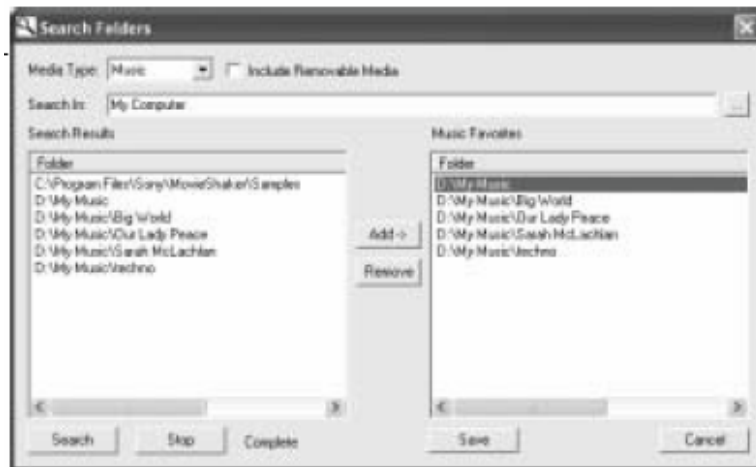
Note: right click your mouse in the Favorites list, then click Add to manually add a specific path (for example: when you already know where your music is on your disk drive, add that directory). Right click your mouse on a directory, then click Remove to delete a directory.

When you are finished searching for your media, close the Search application.

The directories selected will be listed on the TV set in MediaMVP's Video, Music, Pictures menus.

Searching for media from the MediaMVP

You can also choose directories for music, digital pictures and videos from the MediaMVP Settings menu. For instructions, in the section entitled MediaMVP menus, look at the Settings menu.



Note: the first time you enter a directory, it takes a long time (as long as several minutes) while thumbnail images are created. The next time you enter the directory, the response will be immediate. You can also turn off thumbnailing in the Settings/Configuration menu.

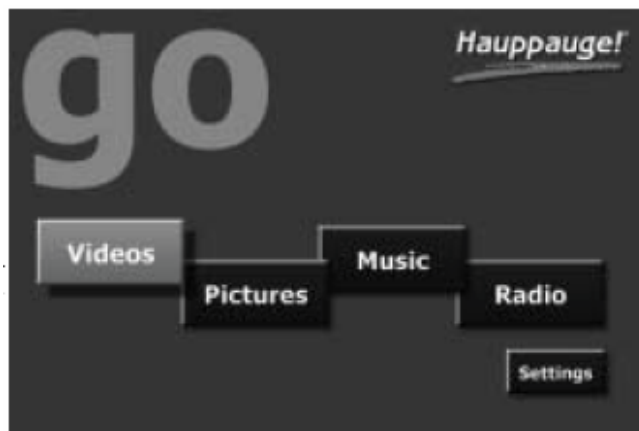
MediaMVP menus

MediaMVP Main menu

MediaMVP's main menu guides you to Music, Videos and Pictures. Also, through Settings, the user can navigate to media stored on their PC.

Note: your PC must be running and both the PC and MediaMVP must be connected to the network before the Main menu will be displayed on your TV set.

Note: To access the Main menu at any point, click Go on the remote control.

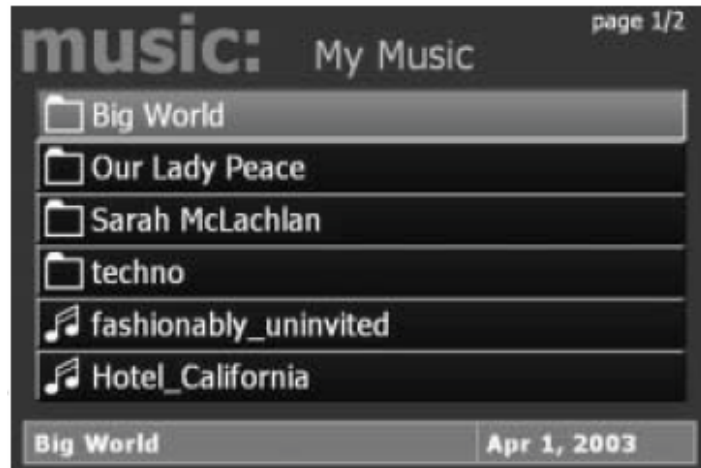


Music menu

The Music menu will show MP3 files, WMA audio or Music Playlists which are located in selected directories on your PC. You can play a music file (indicated by the music icon next to the file name) by either clicking the Play button or the O K button on the remote control.

To navigate to a sub menu (indicated by the folder icon), cursor to the folder by using the arrow buttons on the Remote control and click the OK button on the remote.

Playlists are indicated by the playlist icon. To play a playlist, simply cursor to a playlist and click OK on the remote control. Supported playlists are: M3U, PLS, B4S, and ASX.



If you click the Menu button on the remote control, a pop up menu will appear which will allow the sorting of the music by date or name, or a random order of music files. A Play all option is available, which will play all of the music located in the current directory.

To stop music, click the Stop button on the remote control.

To mute music, click the Mute button on the remote control.

Playing WMA audio files

To play WMA files (Windows Media Audio) with the MediaMVP, the installation of Windows Media Player 9 is required.

Playing a Picture Slideshow while listening to music

After selecting music, either an individual music title, a playlist or by using Play All, you can play Picture files by clicking the Go button on the remote control, right arrow to Pictures, and then entering the Pictures menu by clicking the OK button.

To mute the audio while watching a slideshow, click the mute button on the remote.

8

Pictures menu

The Pictures menu will show JPG, JPEG, BMP or GIF files which are located in selected directories on your PC. You can play a picture file (indicated by the thumb nail of the picture) by either clicking the Play button or the O K button on the remote control.

To navigate to a sub menu (indicated by the folder icon), cursor to the folder by using the arrow buttons on the Remote control and click the OK button on the remote.

If you click the Menu button on the remote control, a pop up menu will appear which will allow the sorting of the pictures by date or name, or a random order.



Play slideshow will play a slideshow of all of the pictures located in the current directory.

To return to the Pictures menu while viewing a picture, click the Back button on the remote control.

While running a slideshow, you can hit Pause to pause the slideshow. Hit either Pause again or Play to resume the slideshow.

When viewing pictures, the Skip ahead button on the remote control will move 6 pictures forward, while the Skip back button will skip back 6 pictures.

9

Videos menu

The Videos menu will show MPEG-1, MPEG-2 or DivX videos which are located in selected directories on the PC. You can play a video file (indicated by the video icon or the video thumbnail) by either clicking the Play button or the OK button on the remote control.

Types of video files supported are MPEG1 and MPEG2, from less than 1 Mbit/sec up to 10 Mbits/sec, or DivX movies. The maximum data rate might be limited by your local area network speed.

To navigate to a sub menu (indicated by the folder icon), cursor to the folder by using the arrow buttons on the Remote control and click the O K button on the remote.

If you click the Menu button on the remote control, a pop up menu will appear which will allow the sorting of the videos by date or name, or a random order.

To return to the Video menu while watching a video, click the Stop button on the remote control.



To fast forward through a video, click the remotes Fast forward button.

To pause the video while playing, click the Pause button on the remote.

To rewind through the video, click the Rewind button on the remote.

While playing videos, the audio volume can be adjusted through the Vol+ and Vol - keys.

Tips for DivX playback

- Simultaneous playback of DivX videos is not possible from multiple MediaMVPs
- DivX playback requires a minimum 1.8 Gigahertz Pentium4 processor or faster in your PC. If your processor is not fast enough, you will lose lip synch as you watch your Videos
- MediaMVP can scale DivX videos up to full screen, but can only do this on videos of exactly 320x240 or 640x480. If your videos are another format, they will be letter- boxed on your TV set.
- After using the Fast-Forward and Fast-Rewind buttons a loss of speech synchronization may occur.

Choose an Internet Radio station or program and use your RIGHT mouse button to click on the button which allows you to listen to a station (for example, the Tune In button in Shoutcast). When you click your RIGHT mouse button, a Pop-Up Menu will appear. Choose Add to MVP Favorite Radio Stations.

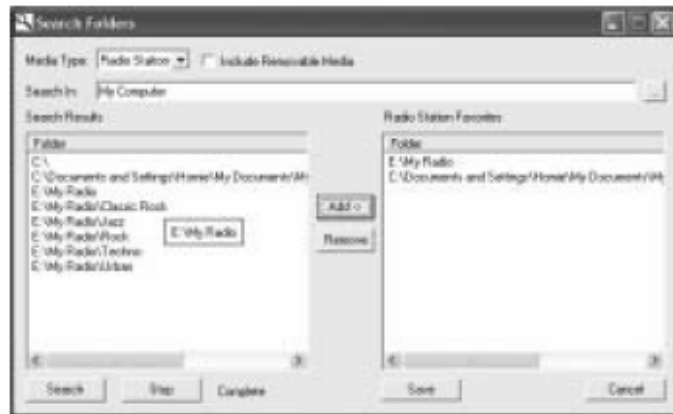
A window will pop up entitled MVP Radio Station. You will be asked to name your added Radio station. You can do so if you like, or leave the default. You can also place the radio station in a category (you will see these categories on your TV set via the MediaMVP). When you are finished naming your radio station, click OK.



Step 2: Add radio stations to the MediaMVP media list

Now we need to add the Internet Radio station directory to the MediaMVP media list so that the MediaMVP can "see" them.

On your Windows screen, click Start / Programs /Hauppauge MediaMVP then Search for Media. (this program also can be found in Program Files/Hauppauge MediaMVP directory) Under Media Type: choose Radio Stations and click on Search. After a few moments, you will see a list of directories on your local hard disks which have MediaMVP links to Internet Radio stations. Click on those directories you would like to have MediaMVP list on your TV set, click Add and then click on Save.



Step 3: Playing an Internet radio station on the MediaMVP

Click the Go button on the MediaMVP remote. Click on the Radio button. If you have set up the directories (the paragraph above), you will see a MyRadio listing. Go to this directory. In the directory, you will see a list of Internet radio stations you have made links to.

To start playing an Internet radio station, use your remote control to select the station and then click the Play button.

Note: If you click on a radio station and the audio does not start within a few seconds, the radio station cannot be accessed by the MediaMVP. One reason for this is that this station cannot be accessed directly (it uses redirection to get to the station). Another reason might be that the radio station does not transmit audio in one of the formats MediaMVP can play (currently MP3 and WMA).



How the Internet radio stations are named, stored and played by the MediaMVP:

When you are browsing Internet radio stations while in Internet Explorer, and you right click on a link to an Internet radio station, the MediaMVP application running on the PC makes a note of the URL the link is pointing to. The MVP Radio Station pop up menu then is run, allowing you to name the link and also put the link into a category (for example: Jazz), and then a file is created in the My Radio directory with that name. The file extension is .MVP, and within the file is the URL of the radio station.

When you want to play a radio station, the MediaMVP application running on the PC opens that file, goes to the URL within the file and then streams the audio over your network to the MediaMVP, where the audio is then played out to your TV set.

If the file holds a link which is not valid (a link which does not directly point to an Internet radio station), then the MediaMVP radio software waits for about 1 minute before it senses that it cannot open the URL and find a radio station. MediaMVP will then return to the Radio menu.

Settings menu

Setting directories for Music, Videos, Pictures and Internet radio

The Settings menu is where you can choose the directories on your PC where your Music, Video and Pictures media are stored. Also, the Settings menu has a Configuration menu where you can set the video format (NTSC or PAL), video size (4:3 or 16:9), and flicker reduction (none, low, medium, high) for your TV set.

When you enter the Settings:music, Settings:video or Settings:pictures menus, you will see a listing of directories (such as My Documents) and drives (disk drives, floppy drives or CDROM drives) on your PC.

To find media within a drive, scroll down to the directory (C:\ for example) and then click the OK button on your remote control. This will bring the contents of the selected directory onto your TV screen. To select subdirectories, scroll down to the subdirectory and hit the OK button. You will see if the media type you are looking for (music, videos, pictures) exists in the directory chosen by having any existing media listed.

To add a directory, hit the green button on the remote.

If you would like to delete a directory from the list you see when entering Videos, Music or Pictures from the Main menu, hit the red button on the remote.

Other settings

Thumbnails

In the Configuration menu, you can turn thumbnails on or off. Thumbnails are small images of your digital pictures or a small image taken from the first frame of a video when browsing through lists of Videos or Pictures. If your PC slows down when viewing directories of Videos or Pictures, you should turn Thumbnails off.

Flicker filter

The flicker filter removes flickering which might appear on some TV sets when displaying text. High end TV sets can use the flicker filter turned off, while normal TV sets might look better if flicker filter is set to medium or high.

Remote control

Power button: the Power button will bring the MediaMVP into a standby mode and will turn off the video output. It will not turn off the MediaMVP completely. When you click the Power button again, the MediaMVP will resume from standby and turn on its video output.

If you want to reset MediaMVP, you need to remove the power plug for a few seconds, then reconnect it.

Go button: displays the Main menu. When in any menu, clicking the Go button will bring up the Main menu.

OK button: the OK button is similar to the Enter key.

Menu button: brings up the Sub menu. For example, when in the Music menu, clicking the Menu button will bring up the sub menu allowing the selection of Play all / Sort by date / Sort by name / Shuffle.

Back button: goes back to the previous menu. For example, if you have entered a directory and you'd like to return to the previous directory, click Back.

Pause button: will pause the music, video or slideshow currently playing. Click Play or Pause again to continue playing from where you left off.

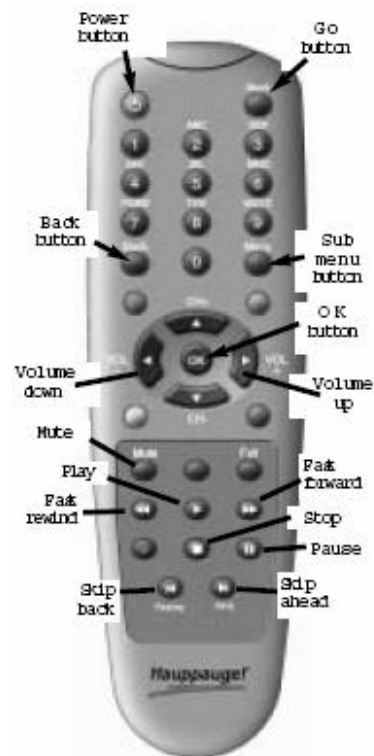
Vol- and Vol+ buttons: you can control the audio volume by using internal hardware in the MediaMVP. This means you can adjust the audio volume without having to use your TV sets remote control.

Skip ahead and Skip back: the Skip buttons are used to skip 6 items ahead or backwards when in the media lists (music, videos and pictures) or when viewing pictures. When playing videos, Skip advances the video 30 seconds.

Number 0 to 9 buttons: When viewing lists of media, or when playing videos, the number keys moves you to 10% when you hit the 1 key, 20% when you hit the 2 key, etc.

When viewing lists, the number buttons will move you to positions within the list. For example, if you are looking at a list of videos in the Music menu, hitting the 5 button will move you to 50% of the way through the list.

When watching a video, you can quickly skip through the video by hitting the 0-9 buttons. When you hit one of these keys, you will skip to, for example, 10% of the video file when you hit the '1' key, 20% of the video file when you hit the '2' and so forth.



Installing MediaMVP software updates

You can download MediaMVP software updates from the Hauppauge website at:
http://www.hauppauge.com/pages/support_mediampv.html

To install a new version of MediaMVP software:

1. unplug the power to the MediaMVP
2. download and install the new version on your PC
3. re-plug the power to MediaMVP

The new MediaMVP application will then be loaded onto MediaMVP through your network.

Connecting MediaMVP directly to a laptop or PC

You can connect the MediaMVP directly to a PC or laptop. To do this, you will need a 'crossover' cable, which you can either buy at a computer store or make yourself. Here is how you connect the MediaMVP directly to your PC or laptop:

1. Purchase or make a crossover Ethernet cable. Examples of a crossover cable are the Belkin CAT 5e Crossover Cable for computer-to-computer connection.
2. Connect one end of the crossover cable to the LAN port on the MediaMVP, and the other end to the LAN port on your PC or laptop.
3. Make sure the MediaMVP software is installed on your PC. See Installing the MediaMVP software section.
4. Set a fixed IP address on your PC when using a crossover cable.

When using a direct connection with a network crossover cable, you need to set a static IP address on your PC.

To do this, click Start / Settings / Control Panel / Network connections. Double click on Local Area Connection and then click Properties. Click on Internet Protocol (TCP/IP). Double click Advanced and you will see the Internet Protocol (TCP/IP) Properties menu.

Uncheck Obtain an IP address automatically.

In the IP address box, enter 192, then 123, then 1, then 1.

When you hit the Tab key, the subnet mask will fill in to 255.255.255.0

Click O K and then O K again to complete the disabling of DHCP.

If you would like to re-enable DHCP, simply click the Obtain an IP address automatically box, and your system will be configured for use on a network instead of the direct PC to MediaMVP connection.

5. Connect the MediaMVP to the TV set, and turn on the MediaMVP. You should see the 'Searching for PC server' on the TV set. On the PC, you should see a Windows message say 'Ethernet connection found'

Since the direct connection from a MediaMVP to a PC is very fast, you will get maximum performance on all music, video and picture media.

Connecting MediaMVP directly to a laptop or PC wirelessly

You can also connect the MediaMVP directly to a PC or laptop wirelessly. To do this, you will need either a 802.11b or 802.11g wireless adaptor which you can purchase at a computer store.

Here is how you connect the MediaMVP directly to your PC or laptop wirelessly:

1. Make sure the wireless adaptor is installed and operating correctly on your laptop or PC. Configure the operating mode of your wireless adaptor to "Ad-hoc" mode. For detailed instruction, please refer to the user manual or installation guide came with the wireless adaptor you have purchased.
2. Make sure the MediaMVP software is installed on your PC. See "Installing the MediaMVP software section".
3. Set a fixed IP address on your PC when connecting wirelessly in "Ad-hoc" mode.

When using a direct wireless connection, you need to set a static IP address on your PC.

To do this, click Start / Settings / Control Panel / Network connections. Double click on Local Area Connection and then click Properties. Click on Internet Protocol (TCP/IP). Double click Advanced and you will see the Internet Protocol (TCP/IP) Properties menu.

Uncheck Obtain an IP address automatically.

In the IP address box, enter 192, then 123, then 1, then 1.

When you hit the Tab key, the subnet mask will fill in to 255.255.255.0

Click O K and then O K again to complete the disabling of DHCP.

If you would like to re-enable DHCP, simply click the Obtain an IP address automatically box, and your system will be configured for use on a network instead of the direct PC to MediaMVP connection.

4. Connect the MediaMVP to the TV set, and turn on the MediaMVP. You should see the 'setup' screen on the TV set.
5. On the "setup" screen you will see the first option "Wireless setup" on the main manual. Press OK button on your remote control to enter the wireless setup page.
6. Now press OK again to enter the "Network name (ESSID)" setting page in the wireless setup page.
7. On the ESSID setup page you will see, at the lower section, a list of all the available wireless

access points or wireless-equipped PCs running on "Ad-hoc" mode. Scroll down the list and select the PC or laptop you wish to connect to by looking for its SSID name. Press "OK" button to confirm and it will take you back to the previous wireless setting page.

8. On the main wireless setting page, press the green button on the remote control to save and apply your settings. Your setting should take effect after a couple of seconds.

Troubleshooting

MediaMVP does not display the Main menu:

In order to display the Main menu, MediaMVP needs to be able to talk to the PC which has the MediaMVP software installed. There are several things which might cause the MediaMVP not to be able to talk to the PC:

- your PC is not turned on. MediaMVP requires the PC to be turned on to operate.
- The network cable is not connected to either the PC or the MediaMVP.
- The network router is not turned on
- Firewall is running on your PC, and is not allowing the MediaMVP to access the PC.

-

Software updates for MediaMVP:

http://www.hauppauge.com/pages/support_mediampv.html

Contacting technical support if you experience MediaMVP problems:

e-mail: techsupport@hauppauge.com

telephone: 631-434-3197

ZoneAlarmPro Firewall

There are four firewall alert menus which pop up during the first use of MediaMVP. For each of these alerts, you should allow access by clicking Yes.

To avoid these warning messages from popping up each time you use MediaMVP, select Remember this answer.

There are three MediaMVP services which will require access to your network: HcwSMS.exe, MVPMedia.exe and MVPStart.exe. Grant access to these programs.



If you are using the built-in Windows XP Firewall

Currently you need to disable this firewall for the MediaMVP to work correctly. Please check our web site for updates which might allow the Windows XP Firewall to operate at the same time as the MediaMVP.

Disabling Windows XP firewall

To disable the Windows XP firewall, click Start and then go into Control Panel and then Network Connections. Click on Local Area Connection. You will see the Local Area Connection Properties menus. Click on the Advanced tab and unclick Protect my computer .

Click OK and the Windows XP Firewall will be disabled.

