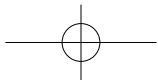


**SAMSUNG  
ELECTRONICS**

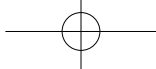
**SAMSUNG**

[www.samsung.com](http://www.samsung.com)



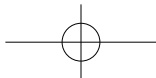
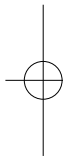
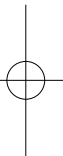
# Book Cover Keyboard





English .....	1	Português.....	115
Deutsch .....	20	Ελληνικά .....	134
Français.....	39	Русский .....	153
Nederlands .....	58	Türkçe .....	172
Italiano.....	77	Български.....	192
Español .....	96	Română .....	212

DRAMA

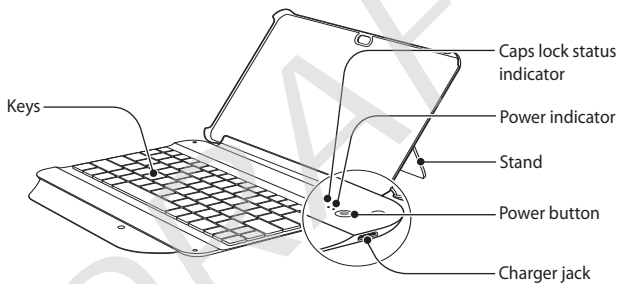




# Contents

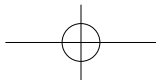
English

<b>Getting started</b> .....	<b>2</b>
Your Book Cover Keyboard overview .....	2
Assembling the Book Cover Keyboard .....	3
Charging the keyboard .....	5
<b>Using your Book Cover Keyboard</b> .....	<b>6</b>
Turning the keyboard on or off .....	6
Connecting the keyboard .....	7
<b>Correct disposal of this product</b> .....	<b>10</b>
<b>Correct disposal of batteries in this product</b> .....	<b>11</b>



Make sure you have the following items: Book Cover Keyboard, Travel adapter and User manual.

- Due to the effect of internal magnetic of keyboard case, geo magnetic compass sensor of mobile tablet may be malfunctioned.

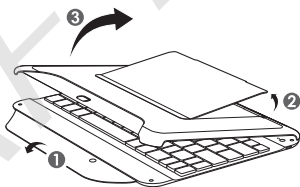


## ■ Assembling the Book Cover Keyboard

You can move anywhere with your tablet covered with this slim and sleek bluetooth keyboard case besides using it as the bluetooth keyboard.

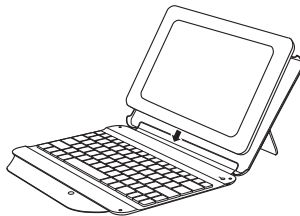
### To open the Book Cover Keyboard

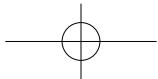
1. Open the side cover of keyboard case.
2. Hold the stand upward and lift the full-cover up.



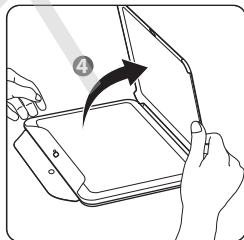
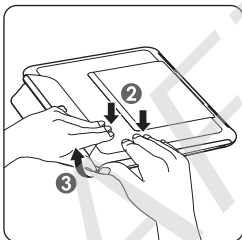
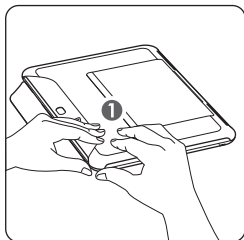
### To place tablet

Place your tablet on the keyboard case with the stand set up in the flat place.



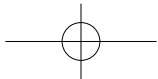


## To remove tablet



English

DRAFT



## ■ Charging the keyboard

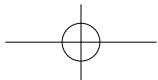
This keyboard has a rechargeable internal battery which is non-removable. Make sure the keyboard is fully charged before using it for the first time.



1. Connect the charger to the charger jack.
2. Plug the charger in to the wall outlet. During charging, the Power indicator will turn red. If charging does not begin, unplug the charger and plug it in again.
3. When the keyboard is fully charged, the power indicator light changes to blue. Unplug the charger from the wall outlet and the keyboard.



- Use only Samsung-approved chargers. Unauthorised or Non-Samsung chargers could cause damage to the device or in extreme circumstances an explosion, it could also invalidate any warranty on the product.
- Repeatedly charging and discharging of the keyboard, over time will cause the battery performance to diminish. This is normal for all rechargeable batteries.







## Checking the battery level

To check the battery level, press and hold the [Ctrl] key for 3 seconds. Depending on the battery level, the Power indicator flashes 5 times in one of the following colours:

Battery level	Power indicator colour
Above 80%	Blue
80 ~20%	Violet
Below 20%	Red

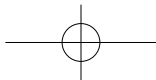
## Using your Book Cover Keyboard

This section explains how to turn the keyboard on, pair and connect to your tablet, and use various functions.

### ■ Turning the keyboard on or off

#### Turning on the keyboard

Press and hold the power button until the blue power indicator flashes four times.



## Turning off the keyboard

Press and hold the power button for 3 seconds. The power indicator flashes blue and then red in sequence before shutting down.



Without charger connected, the keyboard will be turned off when connection is not made between the keyboard and mobile tablet for 3 minutes to save energy.

## Connecting the keyboard

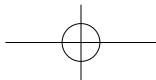
Pairing means unique and encrypted wireless connection between two Bluetooth devices when they agree to communicate with each other. In order to pair, a PIN has to be exchanged between the keyboard and tablet.

### Pairing and connecting the keyboard to your tablet

1. Enter Pairing mode (solid blue indicator light).
  - With the keyboard turned off, press and hold the Power button for three seconds.
  - If the keyboard is turned on for the first time, it will go into Pairing mode immediately.



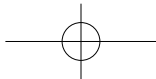
The Pairing mode stays for 3 minutes.



2. Activate the Bluetooth feature on your tablet and search for the keyboard in order to pair with each other (see your tablet's user manual).
3. Select the keyboard (Samsung Tablet Keyboard BKC-1B1) from the list of devices found by your tablet.
4. Type in the PIN at your keyboard (\*it will not show on your screen) and then press enter to connect to your tablet.
5. If they are connected successfully, the LED light will flash in every six seconds of interval after rapidly flashing three times. You can also check pairing states in Bluetooth settings of your tablet. Once pairing is completed, the keyboard tries to reconnect to the last device for 10 seconds whenever it turned on automatically.



The power indicator will go into sleep mode after one minute of no disturbance. However, it will resume flashing once a key is pressed.



## Reconnecting the keyboard

When the keyboard stops working in use, check the pairing state in Bluetooth settings on your tablet and try to reconnect to your tablet.

The way to make reconnection is as follows:

- Use the Bluetooth settings on your tablet.
- Press any key on the keyboard or turn the power off and on again. The keyboard tries to make connection automatically for 10 seconds. If no device found the keyboard will be in connectable mode.

## Disconnecting the keyboard

Turn off the keyboard or use the Bluetooth settings on your tablet.



Make sure the bluetooth keyboard is powered off before mobility. Heavy pressure on the case will result in unintended behavior if the bluetooth keyboard is not shut off properly.



## Correct disposal of this product

### (Waste Electrical & Electronic Equipment)



(Applicable in the European Union and other European countries with separate collection systems)

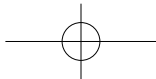
This marking on the product, accessories or literature indicates that the product and its electronic accessories (e.g. charger, headset, USB cable) should not be disposed of with other household waste at the end of their working life.

To prevent possible harm to the environment or human health from uncontrolled waste disposal, please separate these items from other types of waste and recycle them responsibly to promote the sustainable reuse of material resources.

Household users should contact either the retailer where they purchased this product, or their local government office, for details of where and how they can take these items for environmentally safe recycling.

Business users should contact their supplier and check the terms and conditions of the purchase contract. This product and its electronic accessories should not be mixed with other commercial wastes for disposal.

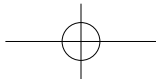
This EEE is compliant with RoHS.



## FCC Rules

This device complies with part 15 of the FCC Rules. Operation is subject to the following two conditions: (1) This device may not cause harmful interference, and (2) this device must accept any interference received, including interference that may cause undesired operation.

Any changes or modifications (including the antennas) made to this device that are not expressly approved by the manufacturer may void the user's authority to operate the equipment.



**FCC RF Radiation Exposure Statement:** This equipment complies with FCC RF Radiation exposure limits set forth for an uncontrolled environment. This device and its antenna must not be co-located or operating in conjunction with any other antenna or transmitter.

**RF du FCC d'exposition aux radiations:** Cet équipement est conforme à l'exposition de la FCC rayonnements RF limites établies pour un environnement non contrôlé. L'antenne pour ce transmetteur ne doit pas être même endroit avec d'autres émetteur sauf conformément à la FCC procédures de produits Multi-émetteur.

### **IC Statement**

This device complies with Industry Canada license-exempt RSS Standard(s). Operation is subject to the following two conditions: (1) this device may not cause interference, and (2) this device must accept any interference, including interference that may cause undesired operation of the device.

Le présent appareil est conforme aux CNR d'Industrie Canada applicables aux appareils radio exempts de licence. L'exploitation est autorisée aux deux conditions suivantes : (1) l'appareil ne doit pas produire de brouillage, et (2) l'utilisateur de l'appareil doit accepter tout brouillage radioélectrique subi, même si le brouillage est susceptible d'en compromettre le fonctionnement.

