



Magic Presenter

Magic Presenter is a digital pointer used with LFDs. Magic Presenter allows you to do presentations free from space limitations or obstacles that may get in the way when using laser pointers.

Components

Check to make sure that no component is missing from the package. Provided components are:

- Magic Presenter_Pointer, Magic Presenter_Dongle, batteries and a user guide



- In this quick guide, the pointer refers to Magic Presenter_Pointer and the dongle refers to Magic Presenter_Dongle.
- The dongle comes with a user guide in PDF and an executable program for Magic Presenter.
- The product warranty is valid for one year. Refer to the user guide that came with the dongle for details on warranty conditions.

Pointer buttons



Press either button to start or finish a slideshow in a Power Point document. These buttons perform the same functions as the F5/Esc keys on the keyboard.



Press either button to go to a specific desired page in a Power Point document. These buttons perform the same functions as the Page Up/Page Down keys on the keyboard.



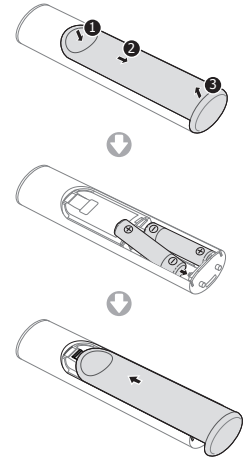
Press the button to show the pointer dot on the LFD.

Replacing the batteries

1 Push the back on the pointer, as shown in the image, to uncover the battery chamber.

2 Insert new (AAA) batteries in the chamber. Make sure the positive and negative ends (+, -) are oriented correctly.

3 Push the cover into the battery chamber until a click is heard.



- Make sure the positive and negative ends (+, -) of the batteries are oriented correctly. Incorrectly oriented batteries may break or leak, damaging the product or causing fire or personal injury.
- Make sure to use the specified batteries. Do not use a new battery and old batteries together. Using an old battery with new batteries does not change the fact that the old batteries are not new. The old battery may damage the product or lead to fire or personal injury.
- Separate disused batteries and battery chargers from other waste so that they can be collected for recycling. Disused batteries can be discarded in your local recycling center or the nearest dealer that deals with waste batteries and battery chargers.
- Keep batteries out of reach of children. Take extra care to ensure that children do not swallow batteries. If your child has swallowed a battery, see a doctor immediately.

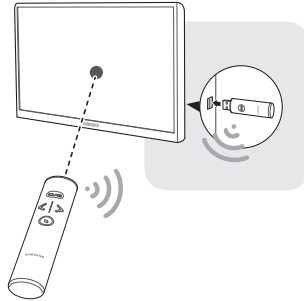
How to use the pointer

Connecting the dongle to an LFD

If the LFD has an internal PIM, insert the dongle into a USB port on the LFD and then use the pointer.

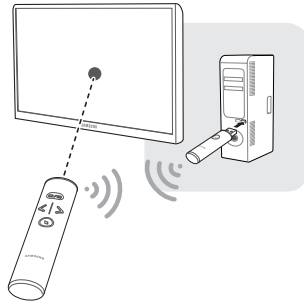


PIM(Plug In Module) refers to a small computer device which is installed on an LFD to process data.



Connecting the dongle to a PC

If the LFD is connected to a PC, insert the dongle into a USB port on the PC and then use the pointer.



Product specifications

Recommended distance from a display		Within 10 m (32.8 ft)
Weight	Magic Presenter_Pointer	33.8 g (with the batteries: 56.8 ± 0.5 g)
	Magic Presenter_Dongle	9.4 g
Power	Magic Presenter_Pointer	Internal 1.5 V alkaline AAA batteries
	Magic Presenter_Dongle	5V 500 mA (USB power)
Power consumption	Magic Presenter_Pointer	50 mA
	Magic Presenter_Dongle	200 mA
	Batteries	Type: 800 mAh 3V(AAA X2) Maximum hours of continuous use: 40 hours
Operating conditions	Operating temperature	10 °C~40 °C (50 °F~104 °F)
	Storage temperature	-20 °C~45 °C (-4 °F~113 °F)



ELECTRONICS

Notice

FCC Statement

This equipment has been tested and found to comply with the limits for a Class B digital device, pursuant to Part 15 of the FCC Rules. These limits are designed to provide reasonable protection against harmful interference in a residential installation. This equipment generates, uses and can radiate radio frequency energy and, if not installed and used in accordance with the instructions, may cause harmful interference to radio communications. However, there is no guarantee that interference will not occur in a particular installation. If this equipment does cause harmful interference to radio or television reception, which can be determined by turning the equipment off and on, the user is encouraged to try to correct the interference by one of the following measures:

- Reorient or relocate the receiving antenna.
- Increase the separation between the equipment and receiver.
- Connect the equipment into an outlet on a circuit different from that to which the receiver is connected.
- Consult the dealer or an experienced radio/TV technician for help.

FCC Caution:

Any changes or modifications not expressly approved by the party responsible for compliance could void the user's authority to operate this equipment.

This device complies with Part 15 of the FCC Rules. Operation is subject to the following two conditions:

- (1) This device may not cause harmful interference, and
- (2) this device must accept any interference received, including interference that may cause undesired operation.

This equipment complies with FCC radiation exposure limits set forth for an uncontrolled environment.

This device and its antenna(s) must not be co-located or operation in conjunction with any other antenna or transmitter.

IC Statement

This Class B digital apparatus complies with Canadian ICES-003.

Cet appareil numérique de la classe B est conforme à la norme NMB-003 du Canada.

This device complies with Industry Canada licence-exempt RSS standard(s). Operation is subject to the following two conditions: (1) this device may not cause interference, and (2) this device must accept any interference, including interference that may cause undesired operation of the device.

This device and its antenna(s) must not be co-located or operation in conjunction with any other antenna or transmitter.

Declaration of Conformity

For the following

Product : Magic Presenter_Pointer / Magic Presenter_Dongle
Model(s) : BN81-09939A / BN81-09990A



Where * can be any alphanumeric character.

Year of Affixing CE Marking : 2014

We hereby declare under our sole responsibility that the electrical product above is in compliance with the essential requirements of R&TTE Directive (1999/5/EC), the Low Voltage Directive (2006/95/EC) and Electromagnetic Compatibility Directive (2004/108/EC) by application of

EN 60950-1: 2006+A11:2009+A1:2010+A12:2011 EN 300 328 V1.8.1
 EN 301 489-1 V1.9.2 EN 62311 :2008
 EN 301 489-17 V2.2.1

and the Directive (2011/65/EU) on the restriction of the use of certain hazardous substances in electrical and electronic equipment by application of EN 50581:2012.

The Technical documentation is kept at the below Manufacturer's address.

Manufacturer

Samsung Electronics Co., Ltd.
 129, Samsung-ro, Yeongtong-gu
 Suwon-si, Gyeonggi-do, 443-742
 Korea, Republic of

28 02 2014
 (Place and date of issue)

Chang Seub Eum / Manager
 (Name and signature of authorized person)

Representative in the EU:

Samsung Electronics Euro QA Lab.
 Blackbushe Business Park
 Saxony Way, Yateley, Hampshire
 GU46 6GG, UK

28 02 2014
 (Place and date of issue)

Joong Hoon Choi / Lab. Manager
 (Name and signature of authorized person)

Note : It is not the address of Samsung Service Centre. For the address or the phone number of Samsung Service Centre, see the warranty card or contact the retailer where you purchased your product. This equipment may be operated in all EU countries.