

Samsung Smart Kit

User's Guide

Version	Date	Description	Person in charge
0.3	2013. 07. 24	Draft of Korean version released.	

This document is a user's guide to introduce and to assist in installing and using Samsung Smart Kit.

Contents

1. Smart Kit at a Glance

1.1. Overview

- 1.1.1. What is Smart Kit?
- 1.1.2. Key Features

1.2. In the Box

1.3. Installation

2. Smart Kit Control using Smartphone

2.1. Initialization

- 2.1.1. Add Bridge
- 2.1.2. Bridge Management
 - 2.1.2.1. Set up DHCP
 - 2.1.2.2. Use HTTP-proxy
- 2.1.3. Add Smart Bulb
- 2.1.4. Add group

2.2. Smart Bulb Control

- 2.2.1. Control single bulbs individually
- 2.2.2. Control multiple bulbs by group (Portrait view)
- 2.2.3. Control multiple bulbs by group (Landscape view)
- 2.2.4. Set up in detail

3. Smart Kit Control on Bridge

1. Smart Kit at a Glance

1.1. Overview

1.1.1. What is Smart Kit?

Samsung Smart Kit is a lighting management solution that allows you to control LED bulbs in your house using your Android smartphone. Now you can easily turn lights on and off and change the ambience in your living space with a touch of your finger.




1.1.2. Key Features

Features	Description
Single Bulb Control	To control Smart Bulbs separately
Bulb Group Control	To control Smart Bulbs by group
Pattern Control	To apply specific lighting-up patterns to Smart Bulbs
Mood Control	To change the lighting to create specific moods
Schedule Control	To schedule Smart Bulbs to turn on and off automatically
Event Notification	To set Smart Bulbs to notify you about activities on your smartphone, such as an incoming call, SMS, etc.
Baby Care	To set Smart Bulbs to turn on automatically if a baby cries
Night Care	To set Smart Bulbs to turn on when you move your smartphone
Quick Panel Control	To quickly control the most frequently used Smart Bulbs using the Quick Panel on your smartphone
Detail Setting	To optimize Smart Kit to suit your needs, controlling various functions in detail

1.2. In the Box



Component	Characteristics
Smart Bulb 3EA	- Input : AC 220-240V~ (50/60Hz) AC 100-120V~ (50/60Hz) - Socket Holder : E27
Bridge 1EA	- Input : 5 V  , 500 mA
Adaptor 1EA	- Input : AC 100-240V~ (50/60Hz)
LAN Cable 1EA	- General UTP Cable
Smart Phone App.	- Android based Application

1.3. Installation

STEP 1 : Put a Smart Bulb into the socket and turn on the power.

STEP 2 : Connect the bridge to the adaptor using a DC connector, and plug the AC Connector into the power socket.

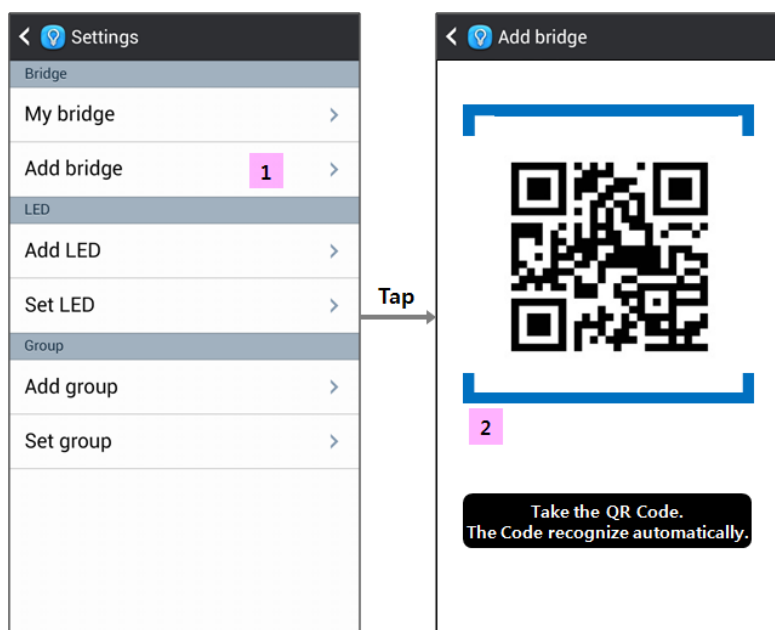
STEP 3 : Connect the bridge to the AP (Access Point) using the LAN Cable.

STEP 4 : Download the 'Samsung Smart Kit' App form 'Google play Store' and install it onto your smartphone.

2. Smart Kit Control using Smartphone

2.1. Initialization

2.1.1. Add Bridge



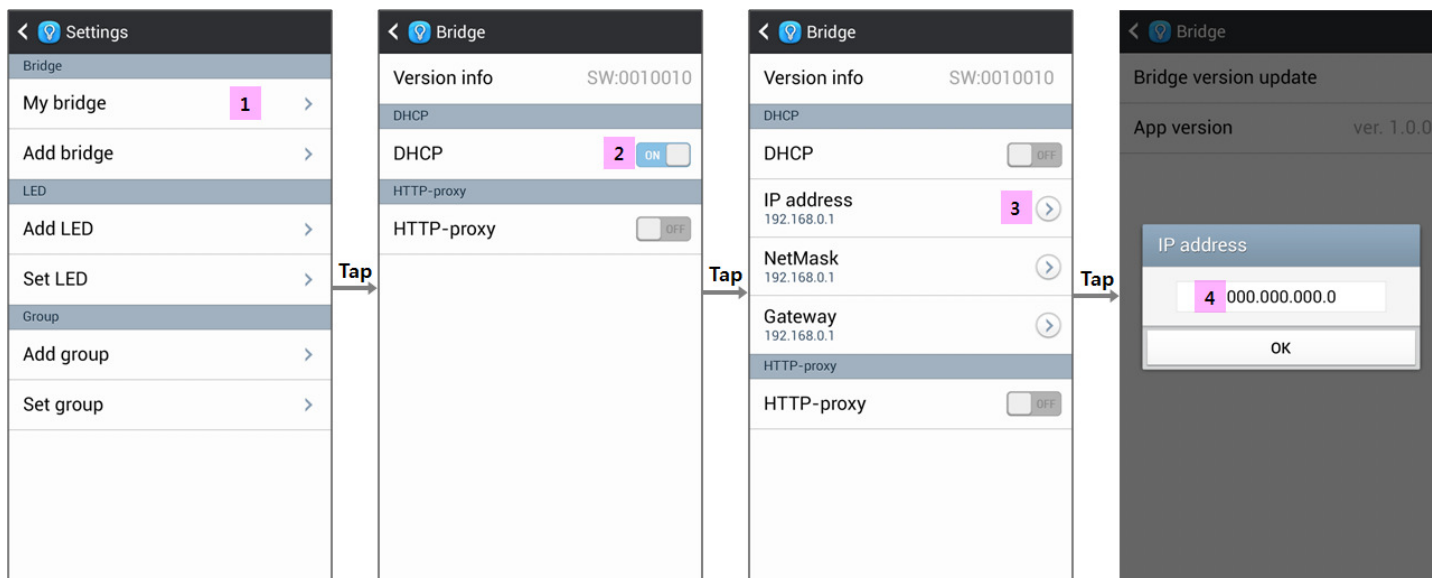
[1] Tap 'Add bridge' from the 'Settings' menu.

To access the 'Settings' menu, press (or touch) the Menu button on your smartphone.

[2] Take the QR code of the bridge to be added.

2.1.2. Bridge Management

2.1.2.1. Set up DHCP



[1] Tap 'My bridge' from the 'Settings' menu.

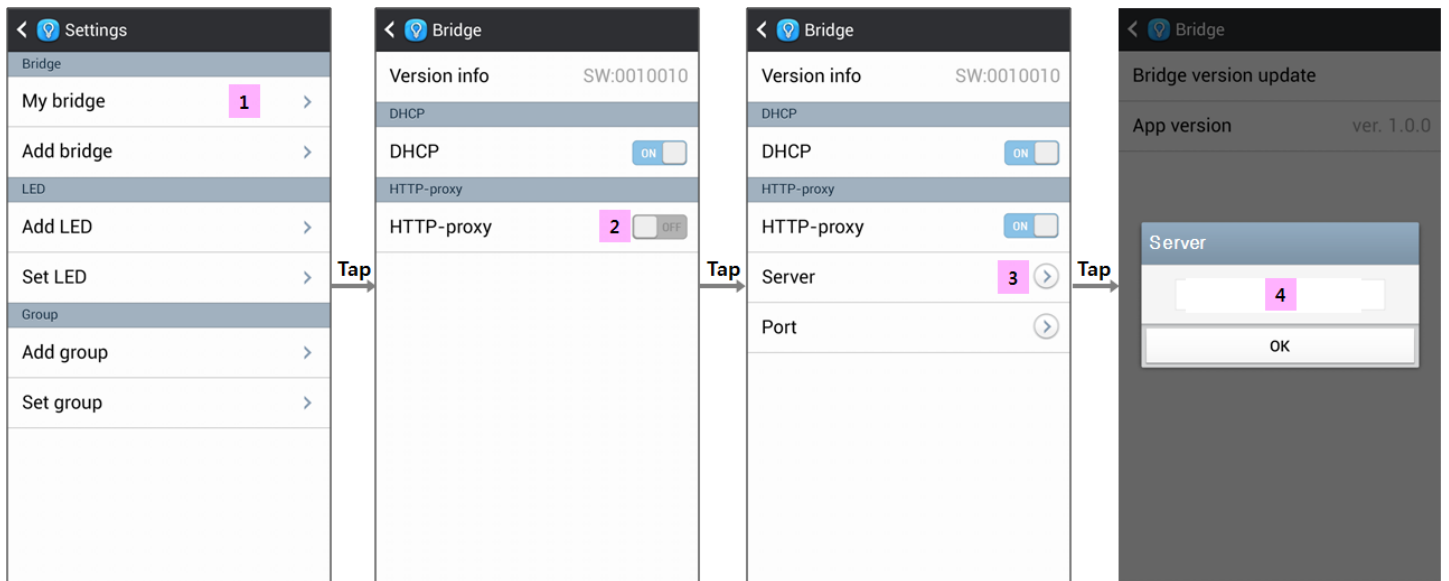
[2] The default value of DHCP is 'ON'. To set up DHCP manually, tap 'ON' to become 'OFF', and then hidden functions appear.

[3] Tap 'IP address' and a dialog pops up.

[4] Enter the IP address of the bridge and tap 'OK'.

Set up the NetMask and Gateway in the same way.

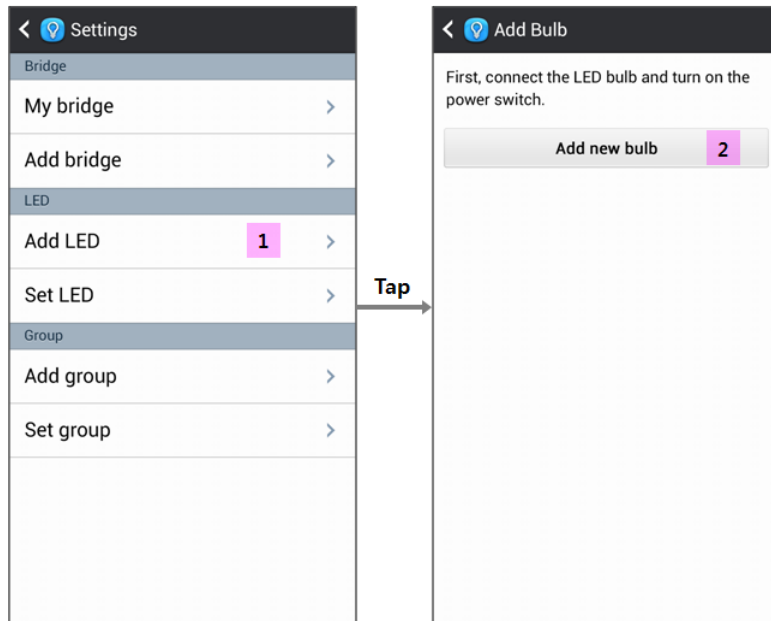
2.1.2.2. Use HTTP-proxy



- [1] Tap 'My bridge' from the Settings menu.
- [2] The default value of HTTP-proxy is 'OFF'. To use HTTP-proxy, tap 'OFF' to become 'ON', and then the Server and Port options appear below.
- [3] Tap 'Server'.
- [4] Enter the IP address of the server and tap 'OK'.

Set up the Port in the same way.

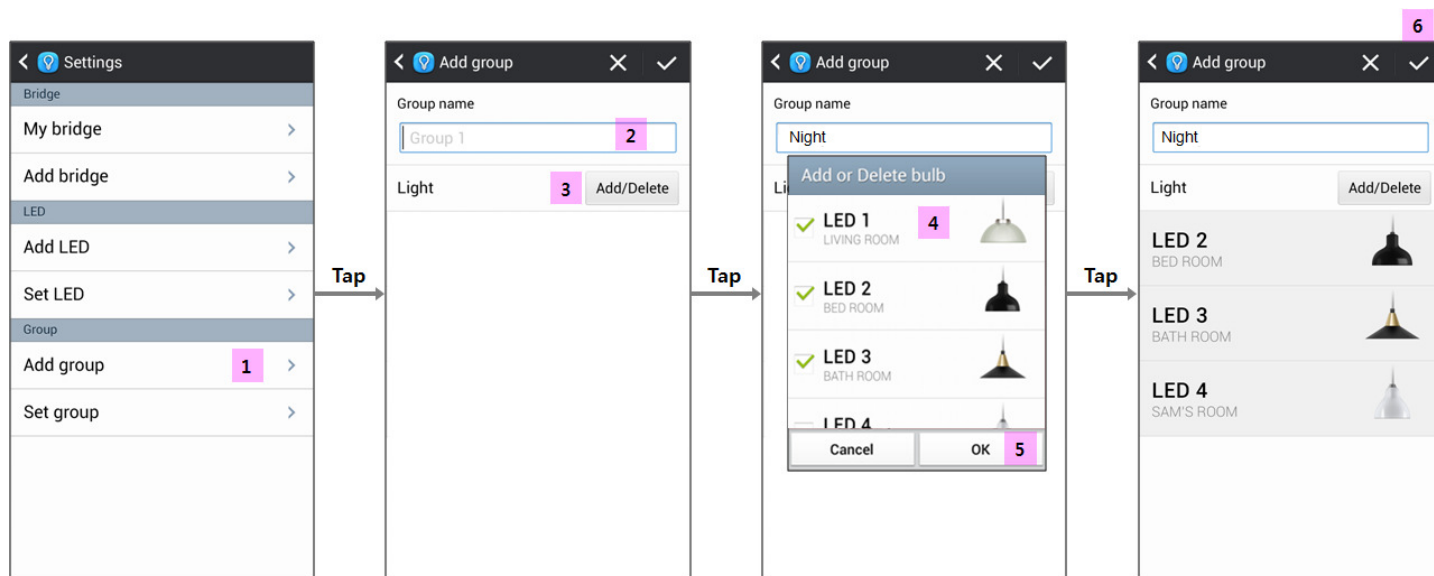
2.1.3. Add Smart Bulb



[1] Tap 'Add LED' from the Settings menu.

[2] Tap 'Add new bulb'.

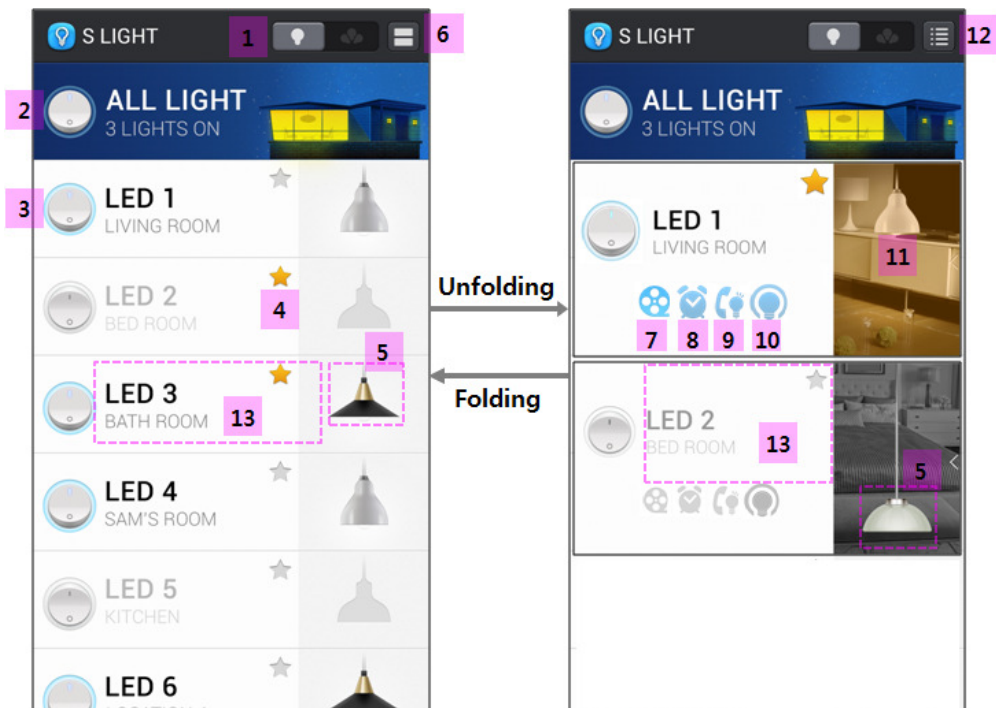
2.1.4. Add group



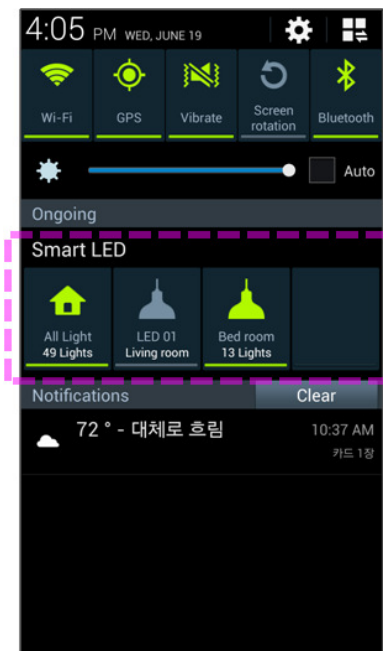
- [1] Tap 'Add group' from the Settings menu.
- [2] Type the name of a new group into the 'Group name' field.
- [3] Tap 'Add/Delete'.
- [4] Leave the bulbs to be added checked with ✓, and uncheck the others.
- [5] Tap 'OK'.
- [6] Tap ✓.

2.2. Smart Bulb Control

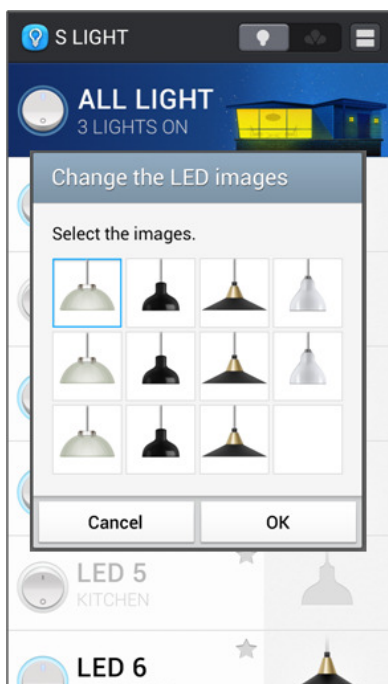
2.2.1. Control single bulbs individually



- [1] Tap the single bulb icon on the top.
- [2] To turn all registered bulbs on and off, tap 'ALL LIGHT'.
- [3] To turn a single bulb on and off, tap its icon on the left-hand side.
- [4] To add each bulb to the Quick panel, tap its star icon.

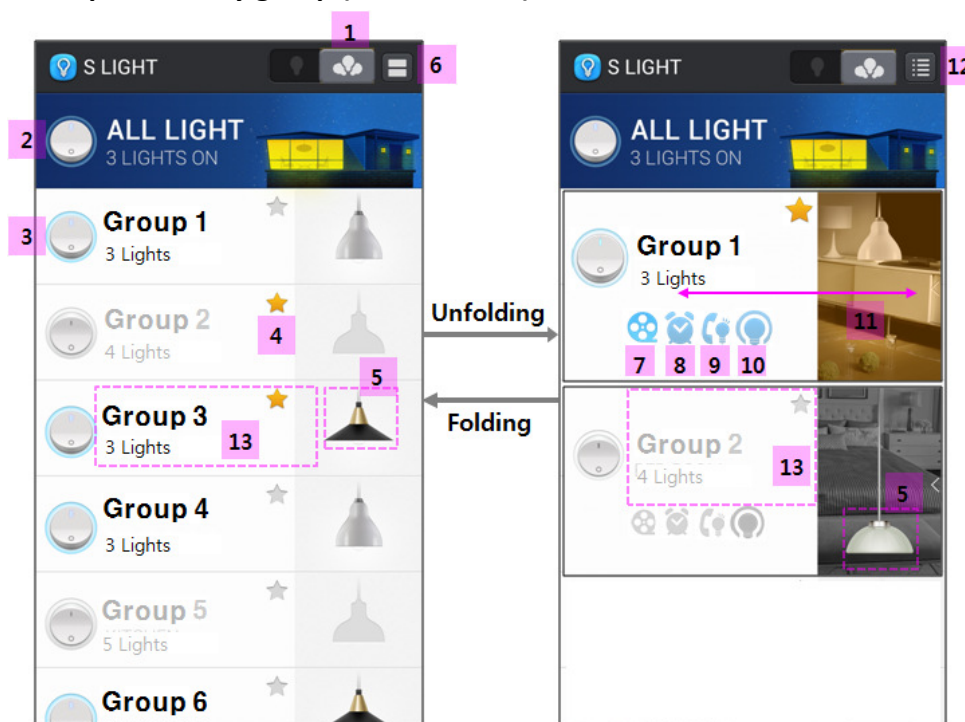


- [5] To change the images of lights, touch and hold the light icon to be changed and then select a preferred image from the list shown.

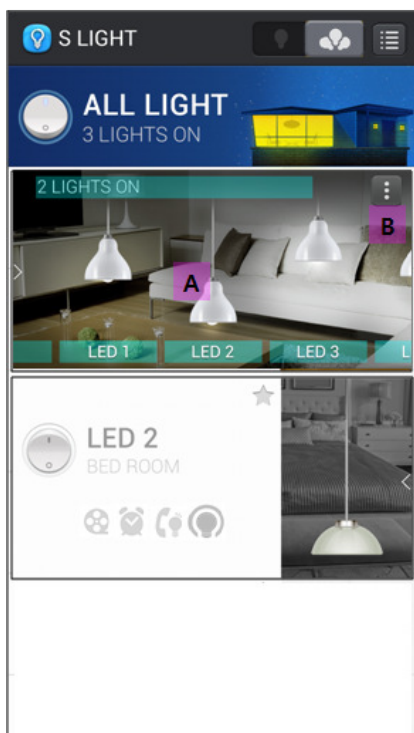


- [6] To change the viewing style to the extended mode , so you can see it in detail, tap it.
- [7] Mood indicator, which shows the current mood – Sleep, Movie, Cook or Reading.
- [8] Schedule indicator, which shows whether it is set up or not – Enable or Disable.
- [9] Event Notification indicator, which shows whether it is set up or not – Enable or Disable.
- [10] Care indicator, which shows whether it is set up or not – Enable or Disable.
- [11] To adjust their brightness and dim lights, touch the light image and drag your finger up or down on it.
- [12] To change the viewing style to the extended mode, so you can see more lights on the list, tap it.
- [13] Tap the name of a light to enable a more detailed set up. See '2.2.4. Set up in detail'.

2.2.2. Control multiple bulbs by group (Portrait view)



- [1] Tap the multiple bulbs icon on the top.
- [2] To turn all groups of bulbs on and off, tap 'ALL LIGHT'.
- [3] To turn each group on and off, tap its icon of the left-hand side.
- [4] To add each group to the Quick panel, tap its star icon.
- [5] To change the images of lights, touch and hold the light icon to be changed, and then select a preferred image from the list shown.
- [6] To change the view style to the extended mode, so you can see it in detail, tap it.
- [7] Mood indicator, which shows the current mood – Sleep, Movie, Cook or Reading.
- [8] Schedule indicator, which shows whether it is set up or not – Enable or Disable.
- [9] Event Notification indicator, which shows whether it is set up or not – Enable or Disable.
- [10] Care indicator, which shows whether it is set up or not – Enable or Disable.
- [11] To adjust their brightness and dim lights flick the group left or right and the dimming dialog appears.



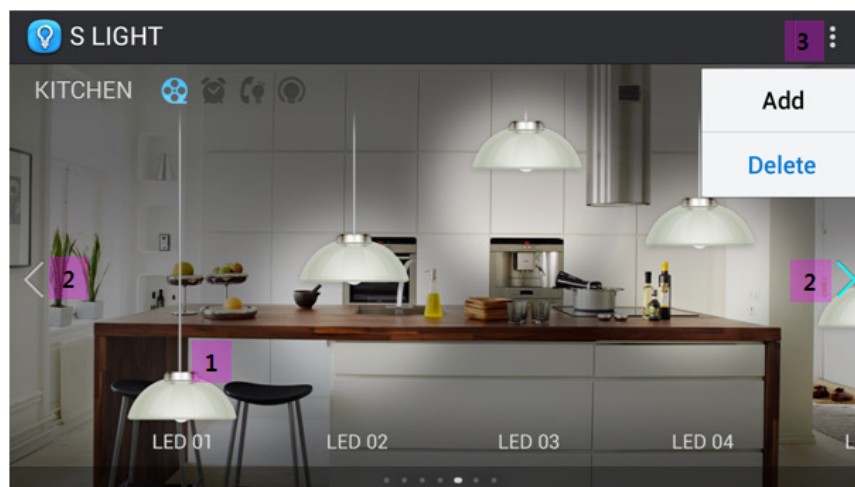
[A] Touch the light image and drag your finger up or down on it.

[B] To add new lights to or remove existing lights from this group, tap it and select 'Add' or 'Delete' when the dialog appears.

[12] To change the viewing style to the extended mode, so you can see more lights on the list, tap it.

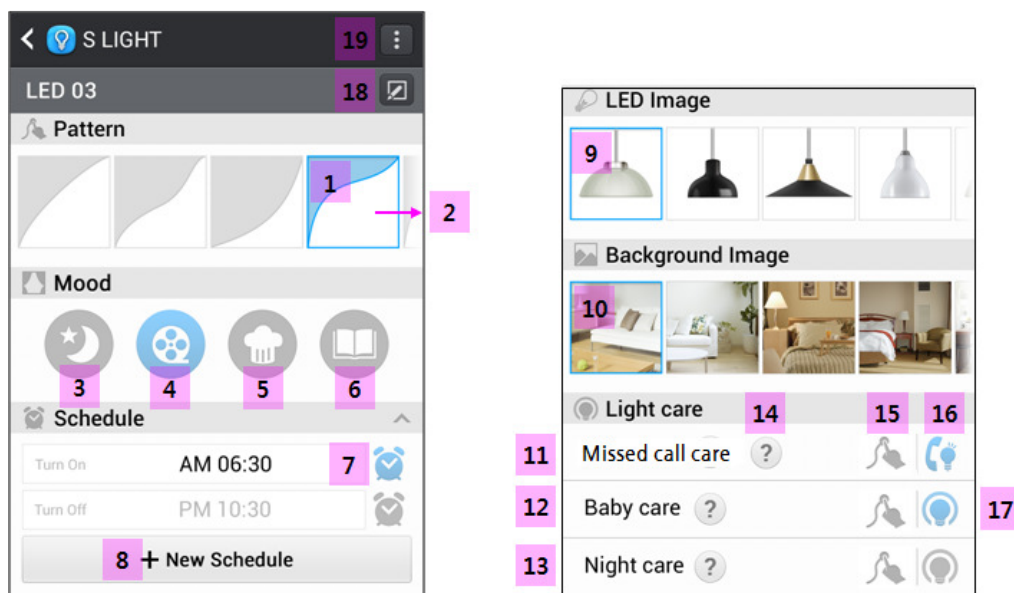
[13] Tap the name of a group to enable a more detailed set up. See '2.2.4. Set up in detail'.

2.2.3. Control multiple bulbs by group (Landscape view)



- [1] To adjust their brightness and dim lights, touch the light image and drag your finger up or down on it.
- [2] To scroll the screen to see more lights in this group, tap the arrow on the right or left, or flick the screen to the left or right.
- [3] To add new lights to or remove existing lights from this group, tap it and select 'Add' or 'Delete' when the dialog appears.

2.2.4. Set up in detail

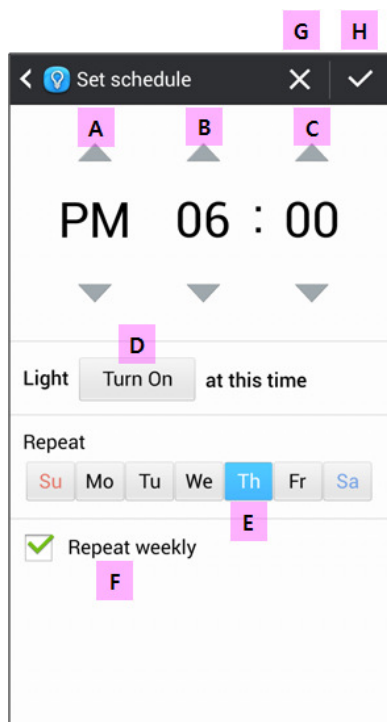


- [1] To apply a specific lighting-up pattern to the lights, tap one of pre-set patterns. Flick the list to the left or right to see more options.
- [2] To customize the lighting-up pattern, tap the '+ (plus)' icon at the end of the list on the right.



- [A] Touch the 'Start here' point, hold your finger down, and draw a line to the top right side.
- [B] To redraw the line, tap 'Undo' and repeat [A].
- [C] Drag or flick the Duration bar to left or right to set the lighting-up duration using this pattern – from 1 second to 15 minutes.
- [D] To cancel and remove the settings, tap X.
- [E] To confirm that you want to use this pattern, tap v.

- [3] Tap it to select the 'Sleep' mood.
- [4] Tap it to select the 'Movie' mood.
- [5] Tap it to select the 'Cook' mood.
- [6] Tap it to select the 'Reading' mood.
- [7] To enable or disable the existing schedules, tap each clock icon.
- [8] To add a new schedule, tap 'New Schedule'.

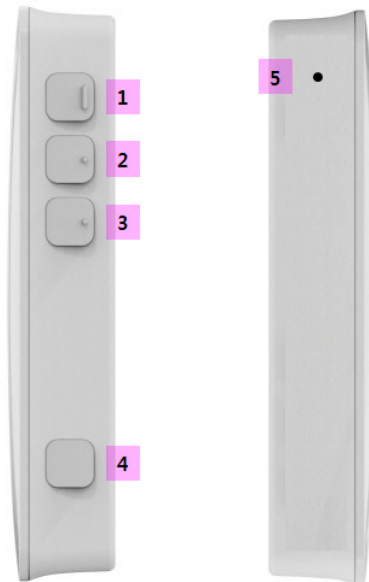


- [A] Select AM or PM.
- [B] Select the hour from 1 to 12.
- [C] Select the minute from 0 to 59
- [D] Tap it to turn this schedule on or off
- [E] Select the weekdays that this schedule is available on (multiple choices).
- [F] Check 'Repeat weekly' to repeat this schedule on all of the selected weekdays.
- [G] To cancel and remove the settings, tap X.
- [H] To confirm that you want to use this pattern, tap v.

- [9] To change the image of the light tap on the preferred one from the list. Drag or flick the list to the left or right to see more options.
- [10] To change the background image, tap on the preferred one from the list. Drag or flick the list to the left or right to see more options.
- [11] Missed call care: It alerts you to any missed phone calls by **changing the settings of the lights**.
- [12] Baby care: It automatically turns on the lights when it detects a baby crying.
- [13] Night care: It turns the lights on when you move your smartphone.
- [14] To learn more about Missed call care, Baby care or Night care, tap the '?' (question mark) icon on the right of each function.

- [15] To apply the lighting-up pattern to each function of Light care, tap it.
- [16] To enable or disable 'Missed call care', tap it.
- [17] To enable or disable 'Baby care' or 'Night care', tap it.
- [18] To change the name of a light or group, tap it.
- [19] This icon only appears when setting a group. To add new lights to or remove existing lights from the group, tap it and select 'Add' or 'Delete' when the dialog appears.

3. Smart Kit Control on Bridge



[1] Power: Press it to turn all lights on and off.

[2] Dim up: Press it to undim all the lights.

[3] Dim down: Press it to dim all the lights.

[4] Pair with bulb: Put a Smart Bulb into the socket, turn on the power and press this button.

[5] Reset: Poke it to reset the bridge to the factory setting.

EU

This product is CE marked according to the provision of the R&TTE Directive (99/5/EC). Here by SAMSUNG ELECTRONICS CO., LTD. declares that this product is in compliance with the essential requirements and other relevant provisions of Directive 1999/5/EC.

CE 0678

FCC STATEMENT

CAUTION: Changes or modifications not expressly approved by the party responsible for compliance could void the user's authority to operate the equipment.

NOTE: This equipment has been tested and found to comply with the limits for a Class B digital device, pursuant to Part 15 of the FCC Rules. These limits are designed to provide reasonable protection against harmful interference in a residential installation. This equipment generates, uses and can radiate radio frequency energy and, if not installed and used in accordance with the instructions, may cause harmful interference to radio communications. However, there is no guarantee that interference will not occur in a particular installation. If this equipment does cause harmful interference to radio or television reception, which can be determined by turning the equipment off and on, the user is encouraged to try to correct the interference by one or more of the following measures:

- Reorient or relocate the receiving antenna.
- Increase the separation between the equipment and receiver.
- Connect the equipment into an outlet on a circuit different from that to which the receiver is connected.
- Consult the dealer or an experienced radio/TV technician for help.