



Digital Photo Frame    



BT07PS



Safety Instructions

- Safety Symbols
- Power
- Installation
- Using and Cleaning

Overview

- Features
- Components
- Front
- Back
- Side

Connecting

- Power
- USB
- Memory Card

Using

- Buttons
- Photos, Web photos
- Music
- Video
- Settings

Applications

- Windows Vista Setting
- Photo Frame Setting
- Windows Live Space
- RSS
- Update firmware.

Specifications

- Specifications
- Supported Files

Troubleshooting

- Troubleshooting
- Terminology
- Service Centers



Using, copying or reproducing the whole or part of this manual without written permission from Samsung Electronics is prohibited. The content of this manual is subject to change without prior notice. ©2007 All rights reserved. Samsung Electronics.

Digital Photo Frame





☰ Safety Instructions

- | [Safety Symbols](#) | [Power](#) | [Installation](#) | [Using and Cleaning](#) |

▣ Safety Symbols

※ Make sure to follow the directions below to prevent accidents and damage to the product.

Warning Failure to follow the accompanying directions may lead to serious injury or death.

Attention Failure to follow the accompanying directions may lead to minor personal injury or property damage.

- | [Safety Symbols](#) | [Power](#) | [Installation](#) | [Using and Cleaning](#) |

▣ Power

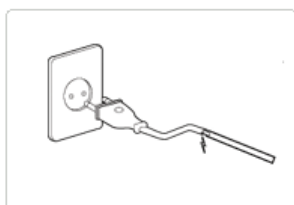
※ The images here are for reference only, and are not applicable in all cases (or countries).

Warning



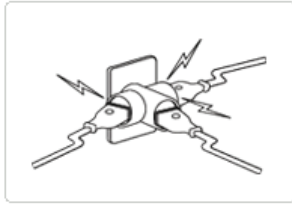
▶ Insert the power plug correctly until it is firmly in place.

- Failing to do so, may cause fire.



▶ Do not use a damaged power plug, cord or outlet, as this may cause electric shock or fire.

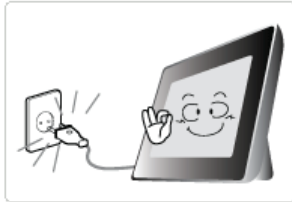
▶ Do not touch the power plug with wet hands, as this may cause electric shock.



▶ **Do not connect more than one appliance to a single outlet, as an overheated outlet may cause fire.**



▶ **Do not use force to pull the power cord. Don't place anything heavy on the power cord, as this may cause electric shock or fire.**



▶ **Make sure to turn the power off and disconnect the power plug from the outlet before moving the product. Make sure to disconnect the connection cables from other devices as well.**

- Moving the product without disconnecting the power cord may damage it while moving, and may cause electric shock or fire.

! Attention



▶ **Hold and pull out the plug by its body when disconnecting it from the outlet, as pulling the plug out by the cord may cause it to be damaged.**

- Failing to do so, may cause fire, or the product may not turn on normally.



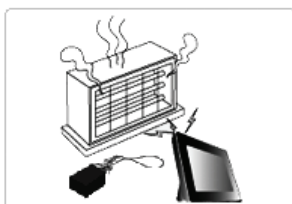
▶ **Ensure that the power plug is disconnected before cleaning the product.**

- Failing to do so, may cause electric shock or fire.



▶ **Keep the product away from places exposed to oil, smoke or moisture; do not install inside a vehicle.**

- This may cause a malfunction, electric shock or fire.
- In particular, avoid operating the monitor near water or outdoors where it could be exposed to snow or rain.



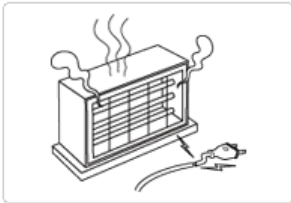
▶ **Do not install the product near any heating appliance.**

- There is a risk of fire.

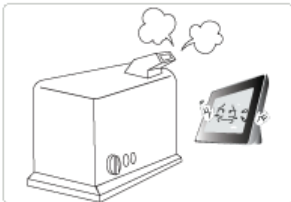
Installation**Warning**

▶ **When installing the product on a cabinet or shelf, do not let the front end of the product project beyond its front edge.**

- Failing to do so, may cause the product to fall, resulting in a product malfunction or personal injury.



▶ **Do not place the power cord near a heater, as the power cord may melt, causing electric shock or fire.**



▶ **Do not install the product in a car or a location exposed to oil, smoke, moisture, water, or rainwater.**

- Any contact of these materials with the product may cause electric shock or fire.



▶ **Disconnect the power plug when there is thunder or lightning.**

- Failing to do so, may cause electric shock or fire.

Attention

▶ **Place the product down gently when installing it.**

- Failing to do so may cause product damage or personal injury.



▶ **Avoid dropping the product when moving, as this may cause product damage or personal injury.**



▶ **Do not install the product in a location easily reached by children.**

- As the product may fall and cause personal injury.

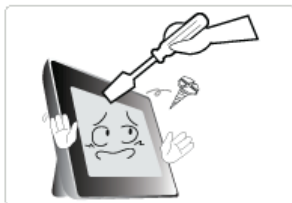
Using and Cleaning

Warning



▶ **Do not insert any metal objects such as forks, wire, or gimlets, or flammable items such as paper or matches into the ports at the back of the product, as this may cause electric shock or fire.**

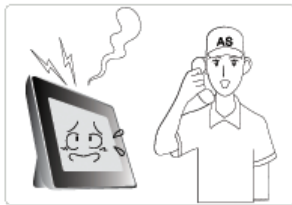
- If water or any foreign substance enters the product, make sure to turn the product off disconnect the power plug from the outlet, and contact a **service center**.



▶ **Never disassemble, repair, or modify the product yourself.**

- If you need to repair your product, contact a **service center**. An attempt at repairing this product may cause electric shock or fire.

Attention



▶ **If you hear a strange sound, smell anything burning, or see smoke, disconnect the power plug immediately and contact a service center.**

- Failing to disconnect the power plug may cause electric shock or fire.



▶ **Always remove dust and water from the pins and connections of the power plug.**

- Failing to do so may cause electric shock or fire.



▶ **When cleaning the product, first disconnect the power plug and clean it with a soft, dry cloth.**

- Do not use any chemicals such as benzene, alcohol, thinners, mosquito repellent, aromatic, lubricant, detergent or wax.



▶ **When not using the product for a long time, make sure to disconnect the power plug.**

- Heavy accumulated dust may cause electric shock or fire.



▶ **If the product needs to be installed in a location that doesn't satisfy general conditions, make sure to contact one of our service engineers about the installation as the product may encounter serious quality problems due to its environment.**

- This refers to locations exposed to conditions such as heavy fine dust, chemicals, high or low temperature, moisture, or when the product needs to be used continually without a break over a long time.

▶ **If the product has been dropped or the product casing is damaged, turn it off and**



disconnect the power plug.

- Using the product without verifying that it has not been damaged may cause electric shock or fire. Please contact a **service center**.

**Correct Disposal of This Product
(Waste Electrical & Electronic Equipment) - Europe only**



(Applicable in the European Union and other European countries with separate collection systems)

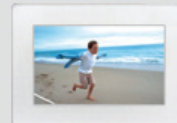
This marking shown on the product or its literature, indicates that it should not be disposed with other household waste at the end of its working life. To prevent possible harm to the environment or damage to health from uncontrolled waste disposal, please separate this from other types of waste and recycle it responsibly to promote the sustainable reuse of material resources.

Household users should contact either the retailer where they purchased this product, or their local government office, for details of where and how they can take this item for environmentally safe recycling.

Business users should contact their supplier and check the terms and conditions of the purchase contract. This product should not be mixed with other commercial wastes for disposal.

Using, copying or reproducing the whole or part of this manual without written permission from Samsung Electronics is prohibited. The content of this manual is subject to change without prior notice. ©2007 All rights reserved. Samsung Electronics.

Digital Photo Frame





Overview

| [Features](#) | [Components](#) | [Front](#) | [Back](#) | [Side \(Buttons\)](#) |

Features

- 01 Expand the memory capacity with a memory card. Enjoy stored images immediately.**
 - ◆ By connecting a SD or MMC/MS/XD memory card of your digital camera to your digital photo frame, you can enjoy images quickly and easily. This also provides a way to expand the memory capacity of the frame.

- 02 Stylish design**
 - ◆ With its sleek and clean, high class design, your digital photo frame doubles as an ornament for your desk or table.
 - ◆ A 90 degree rotating stand allows both horizontal and vertical installation.

| [Features](#) | [Components](#) | [Front](#) | [Back](#) | [Side \(Buttons\)](#) |

Please check that all components are contained in the delivered package.
If anything is omitted, contact the local distributor where the product was purchased. For optional items, contact a [service center](#).
Never use a power adapter other than the adapter provided with the product.

Components



(Colors may differ for each product.)

Manual



Quick Start



Warranty
(Not available in all locations)



User Manual

Cables



Power cord



USB cable
(A-B type)



Power Adapter

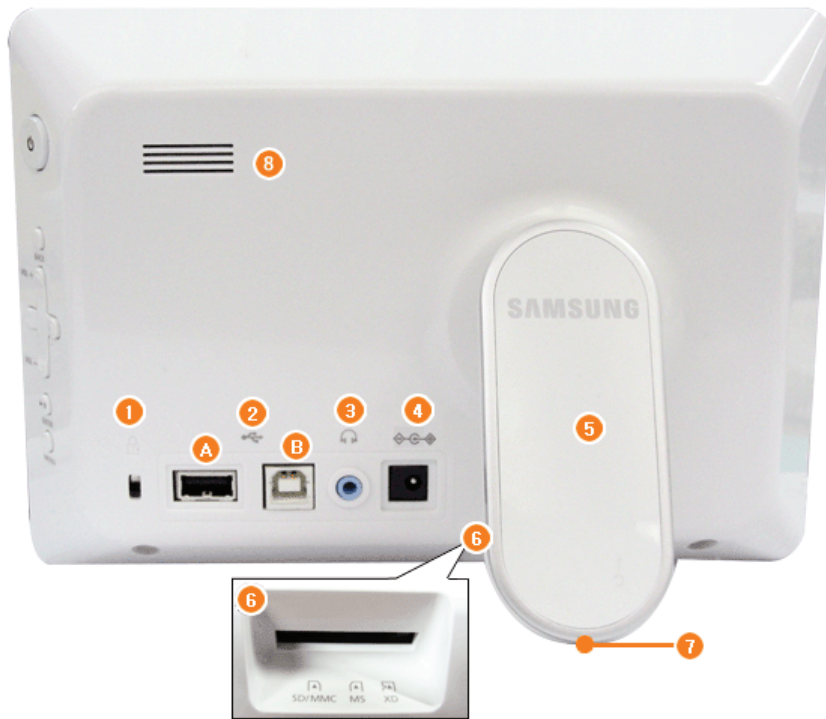
| [Features](#) | [Components](#) | [Front](#) | [Back](#) | [Side \(Buttons\)](#) |


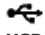
Front





| [Features](#) | [Components](#) | [Front](#) | [Back](#) | [Side \(Buttons\)](#) |

Back



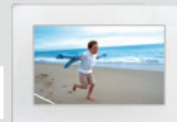
- 1**  **Kensington lock** The Kensington lock is a device used to physically secure the system when using it in a public place. (The locking device has to be purchased separately.)
For using a locking device, please contact where you purchased it.
- 2**  **USB connection port** Connect a PC or an external device using a USB cable.

 - A** Down stream Connect your digital photo frame to a USB-supporting storage device with a USB cable.
 - B** Up stream Connect your digital photo frame to a PC's USB port with a USB cable.

※ Make sure to use the USB cable (A-B type) provided with the product when connecting your digital photo frame to a PC through the upstream port.
- 3**  **Headphone connection jack** Connect your headphones to the Headphone connection jack.
- 4**  **DC -In Jack** Connect the power adapter to this jack.
 Connect the power cord to the power jack of the power adapter.
- 5** **Stand** A 45, 90 degree rotating stand allows both horizontal and vertical installations. If your digital photo frame is installed vertically, you can rotate your photos using the rotation function to fit to the vertical installation.
- 6** **Memory Card Slot** Allows you to insert an optional memory card.
 (Only applicable for SD/MMC/MS/XD card)
- 7** **Sliding Prevention Holder** Supports the product so that it stays firmly in place on slippery surfaces.
- 8** **Speaker** You can listen to music files and movies.



- 1** [⏻] **Power Button** Turns the product on or off.
Power Indicator Hold down the power button at the right of the product for about 2 seconds. Shows the power status. When the product is powered on, the power light turns on.
- 2** [MENU] **Menu Button** Displays the menu window at the bottom left corner of the screen.
- 3** [VOL +] **Volume Button** Adjusts the sound volume when playing music files or movies.
[^] Up Button Used for moving up.
- 4** [←] **Left Button** Used for moving left.
- 5** [→] **Right Button** Used for moving right.
- 6** [VOL -] **Volume Button** Adjusts the sound volume when playing music files or movies.
[v] Down Button Used for moving down.
- 7** [ENTER(↵)] **Enter Button** Used for selection.
[▶||] Play / Pause Button Play / Pause during playback.
- 8** [BACK] **Back Button** Return to the previous menu.



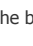



Connecting

| [Power](#) | [USB](#) | [Memory Card](#) |

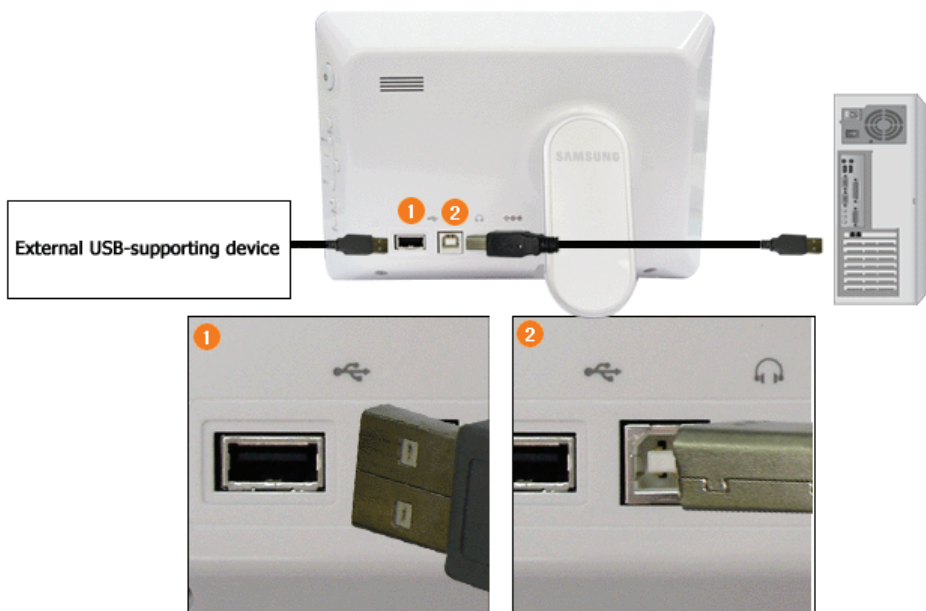
Connecting the Power



- 1 Connect the power adapter to the  terminal at the back of the product.
- 2 Connect the power cord to the power adapter.
- 3 Plug the power cord for the product into a nearby outlet.
- 4 Press the  button on the side of the product to turn the product on.

| [Power](#) | [USB](#) | [Memory Card](#) |

Connecting via USB



1 Down Stream Port

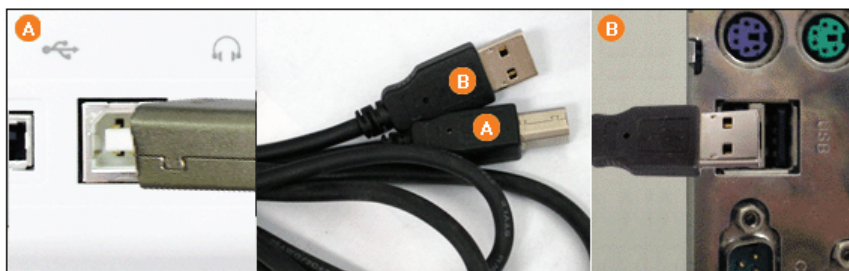
Used to connect an external USB-supporting device to your digital photo frame.

- ✗ This product does not support USB card readers. Only USB storage is supported.
- ✗ The external devices connected to your Digital Photo Frame are not recognized by your PC.
- ✗ When connecting an external device to the down stream port, use the USB cable provided with the external device.
- ✗ Samsung carries no liability for external device malfunctions caused by using any cable except the standard cables specified for each device.
- ✗ Some external products provide a cable that does not meet USB standards. Hence, they may cause a malfunction.
- ✗ If an external storage device does not work normally when connected to your digital photo frame, try to connect it to your PC. If it still does not work normally when connected to your PC, contact a service center for that external device or your PC.

2 Up Stream Port

Used to connect your digital photo frame to a PC.

- ✗ When connecting your digital photo frame to a PC through the up stream terminal, make sure to use the USB cable provided with the product.



A Connect to the upstream jack of your digital photo frame.

B Connect the USB terminal of your PC.

Folder Structure

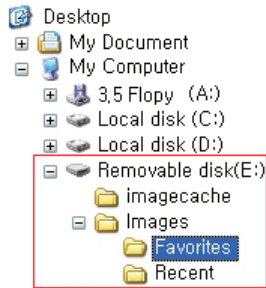
When connecting this product to your PC, it is displayed as a removable disk (E:), as shown in the figure below.

You can save and play all music and movie files in the following folders.

You can also add and delete folders as required. (However, if you delete the following default folders, they are automatically created when your product is turned on again.)

01 images

A default folder created by the product
(The full path displayed in the Digital Photo Frame: Photos / frame memory / images)



- 02 **Favorites** Mainly stores photos.
- 03 **Recent** Temporarily stores the last displayed photo.
- 04 **imagecache** Stores as many Web Photos (photos from the Windows Live or RSS) to the cache as were used in the images folder. If you copy your photos from your PC to the imagecache, they are invisible and cannot be viewed with your Digital Photo Frame.

- ✘ The capacity of this product is 64 MB.
If the capacity is exceeded, no further files can be stored.
- ✘ Do not turn off the product while saving, playing, or deleting a file.
- ✘ The volume name of the removable disk (for example, E:, F:, G:) may differ depending on your computer environment.

| **Power** | **USB** | **Memory Card** |

Connecting a Memory Card



- 1 **SD/MMC/MS/XD CARD** Slide the card in the direction marked on the top of the card.

- ✘ Removing the memory card while playing MP3s, movies, or photos, may cause the product to operate abnormally. In this case, turn the product off and on.





Using

- | [Buttons](#) | [Photos, Web Photos](#) | [Music](#) | [Video](#) | [Settings](#) |

Buttons

Control Buttons

Button	Description
	Turns the product on or off. Hold down the power button on the side of the product for about 2 seconds.
MENU	Opens the on-screen menu and exits from the menu.
VOL +, VOL -	Push the button to adjust volume.
^, v, <, >	These buttons allow you to adjust items in the menu.
ENTER	Activates a highlighted menu item.
BACK	Use this button to step one step back in the menu.

- | [Buttons](#) | [Photos, Web Photos](#) | [Music](#) | [Video](#) | [Settings](#) |

Photos / Web photos

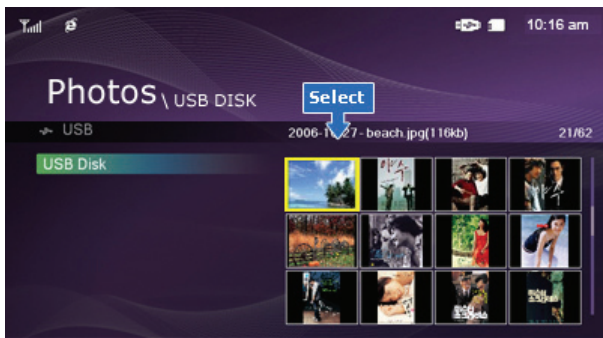
List Menu (Only Photos)



※ When pressing the MENU button, the on-screen menu is displayed on the screen.

Upper OSD	Sub OSD
	Description
Show Pictures From	<ul style="list-style-type: none"> ♦ Memory Card, USB, Frame Memory(:default value) Select a connected storage media. You can only select an external device which is currently connected.

Thumbnail List Menu



※ When pressing the MENU button, the on-screen menu is displayed on the screen.

Upper OSD	Sub OSD	
	Description	
Start Slide Show	Start Slide Show	
Copy	♦ Copy File, Copy All Files	
	You can copy the selected file to other connected storage devices.	
Delete	♦ Yes, No	
	Delete the file. (This is enabled when Photos is selected.)	
Show Related Photos	Allows you to view a list of other photos which have a relationship to the selected image, for example, other photos with a similar date to it. -. You can only use images shared by Windows Media Player on your PC while your digital photo frame is connected to it.	
Set as Background	Sets the currently selected image as the Home Background for the main screen. At this time, the Home Background in the Settings menu is automatically set to Custom.	
Background Music	♦ On, Off, Setting	
	Set the Background Music to On by pressing the Menu button. Then set the Background Music to Setting by pressing the Menu button again and selecting the music you want from among the music files saved on the Frame Memory or the connected external memory.	

Slideshow Menu

Upper OSD	Sub OSD	Detail OSD
	Description	
Pause Slide Show/ Resume Slide Show	Pause Slide Show/Resume Slide Show	
Slide Show Settings	Transition	♦ Fade, Wipe, Slide, Blind, Checker, Random, None
	Select an effect for your slide show when transitioning between images.	
	Interval	♦ 5 Seconds, 10 Seconds, 20 Seconds
	Controls the time intervals between image files for a slide show.	
	Repeat	♦ On, Off
	Select the Repeat for displaying images.	
Show Related Photos	Shuffle	♦ On, Off
	Select whether to playback the files sequentially or in shuffle mode.	
Brightness	Allows you to view a list of other photos which have a relationship to the selected image, for example, other photos with a similar date to it. -. You can only use images shared by Windows Media Player on your PC while your digital photo frame is connected to it.	
	♦ 0~100 Adjust the brightness from 0 to 100.	
Rotate	♦ Original, 90°, 180°, 270° You can rotate an image 90°, 180°, or 270°. You can also keep the image as is by selecting Original.	

Rate Photos	While a slide show is in progress, stars (★) are displayed according to the grade set by Windows Media Player. -. You can only use images shared by Windows Media Player on your PC while your digital photo frame is connected to it.
Photo Aspect	♦ Original , Auto Fit , Fit To Width , Fit To Screen Select an aspect ratio for images to display.
Set as Background	Sets the image being displayed in the slide show as the Home Background for the main screen.
Background Music	♦ On , Off , Setting You can specify the background music for your slide shows. Select On and move to Settings. Then select the music you want to play. You can adjust the volume using the ^ v buttons to the right of your digital photo frame.

➔ **Direct Functions (Slide Show)**

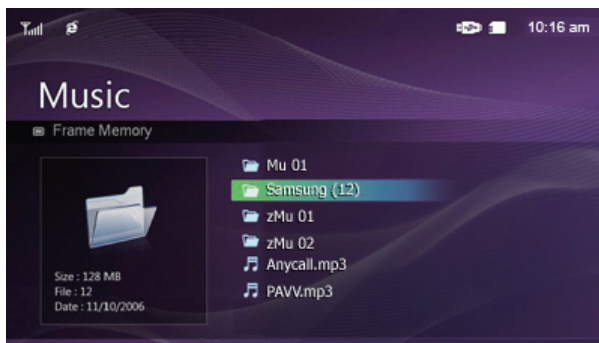


Button	Description
>	Play the next file in the list.
<	Play the previous file in the list.
▶	Pressing the ▶ button alternately plays and pauses the file.
MENU	Opens the on-screen menu and exits from the menu.

- | [Buttons](#) | [Photos, Web Photos](#) | [Music](#) | [Video](#) | [Settings](#) |

▶ **Music**

➔ **List Menu**

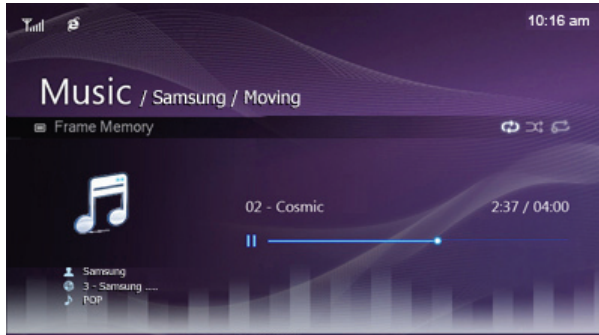


✘ When pressing the MENU button, the on-screen menu is displayed on the screen.

Upper OSD	Sub OSD
	Description
Music Source	♦ Memory Card , USB , Frame Memory (:default value) Select a connected media storage device. You can only select an external device which is currently connected.
Playback Mode	♦ Once , Repeat , Repeat Once , Shuffle Select to playback music files either Once, repeatedly or randomly.
Copy	♦ Copy File , Copy All Files

	You can copy the selected file to other connected storage devices.
Delete	Delete the file.

➤ Play Menu



✘ When pressing the MENU button, the on-screen menu is displayed on the screen.

Upper OSD	Sub OSD
	Description
Playback Mode	♦ Once, Repeat, Repeat Once, Shuffle
	Select to playback music files either Once, repeatedly or randomly.
Brightness	♦ 0~100
	Adjust the brightness from 0 to 100.

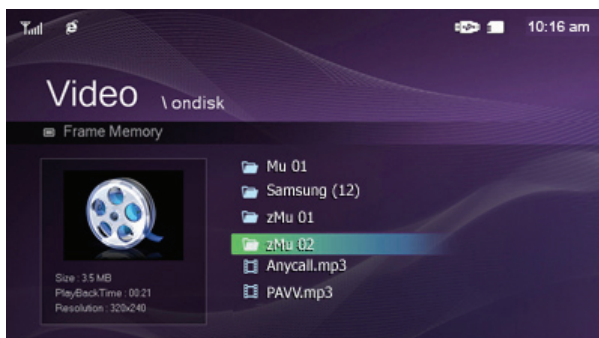
➤ Direct Functions

>	Plays the next file.
<	Plays the previous.
^, v	Adjusts the volume.
▶	Plays and Pauses a file.
MENU	Displays the menu. Exits the menu.

| **Buttons** | **Photos, Web Photos** | **Music** | **Video** | **Settings** |

▶ Video

➤ List Menu



✘ When pressing the MENU button, the on-screen menu is displayed on the screen.

Upper OSD	Sub OSD
	Description
Video Source	♦ Memory Card, USB, Frame Memory(:default value)
	Select a connected media storage device. You can only select an external device which is currently

	connected.
Playback Mode	<ul style="list-style-type: none"> ◆ Once, Continuous <p>You can playback movie files either Once or Continuously.</p>
Copy	<ul style="list-style-type: none"> ◆ Copy File, Copy All Files <p>You can copy the selected file to other connected storage devices.</p>
Delete	Delete the file.

➤ Play Menu



✘ When pressing the MENU button, the on-screen menu is displayed on the screen.

Upper OSD	Sub OSD
	Description
Playback Mode	<ul style="list-style-type: none"> ◆ Once, Continuous <p>Select a mode among Once, Continuous.</p>
Brightness	<ul style="list-style-type: none"> ◆ 0~100 <p>Adjust the brightness from 0 to 100.</p>

➤ Direct Functions

>	Play the next file.
<	Play the previous.
^, v	Adjust volume.
▶	Plays and Pauses a file.
MENU	Displays the menu. Exits the menu.

| [Buttons](#) | [Photos, Web Photos](#) | [Music](#) | [Video](#) | [Settings](#) |

▶ Settings

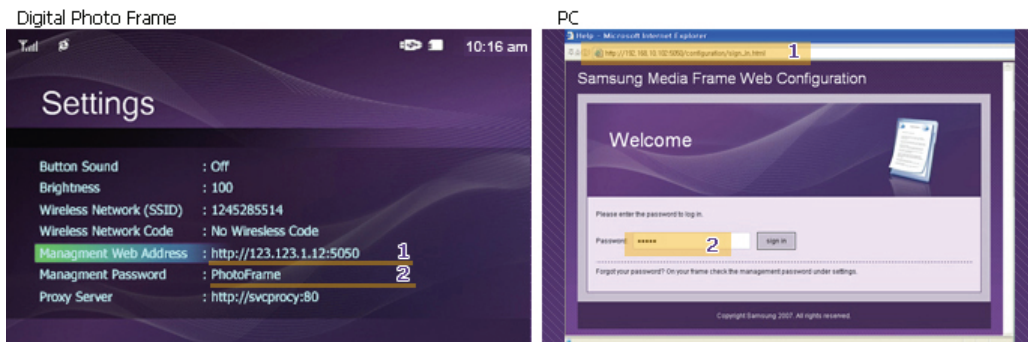
➤ Set the Settings



Upper OSD	Sub OSD
	Description
Default Computer	By using the wireless LAN connection search function, you can reset the current connection and re-select the computer from which you are receiving photos.
Language	<ul style="list-style-type: none"> English, Deutsch, Español, Français, Italiano, Português, Русский, Türkçe, 简体中文, 繁體中文, 한국어 <p>Select a language to use for your product.</p>
Time Zone	You can select the Time Zone that you are in. Select a Time Zone.
Daylight Saving Time	<ul style="list-style-type: none"> On, Off <p>Selects whether to apply DST (Daylight Saving Time) depending on the Time Zone and Summer Time.</p>
Date and Time	<ul style="list-style-type: none"> Month, Day, Year, Hour, Minute, am/pm <p>Enter and set Month, Day, Year, Hour, Minute or am/pm. Whenever the power plug is disconnected, the Date and Time information is lost. Therefore, you need to reset them each time</p>
Alarm	<ul style="list-style-type: none"> Activation, Hour, Minute, am/pm, Repeat, Sound, Volume <p>You can set alarms.</p>
Auto Picture On/Off	<ul style="list-style-type: none"> Activation, Hour, Minute, am/pm <p>Your product will turn on at the specified time automatically. Your product will turn off at the specified time automatically. If the screen was turned off at the Off Time, it turns on again when a key other than the Power key is pressed.</p> <p>✗ When your Photo Frame is connected to your PC as a Mass-Storage device using a Mini-Monitor or USB cable, the screen will not be turned off even at the Off Time.</p>
OSD Color Theme	<ul style="list-style-type: none"> Violet Style, Blue Style, Green Style, Orange Style <p>You can select a color theme for the OSD background.</p>
Home Background	<ul style="list-style-type: none"> Default, Custom <p>You can reset the Home Background of the main menu to the default image.</p>
Time Format	<ul style="list-style-type: none"> 12 hours, 24 hours <p>You can select whether to display the time in the 12 or 24 hour mode. In 24 hours, am and pm will not be displayed.</p>
Starting Mode	<ul style="list-style-type: none"> Home Menu, Last Mode <p>You can select the menu which is displayed when your Digital Photo Frame starts.</p>
Internet Time Update	<ul style="list-style-type: none"> Auto, Manual, Update Time Now <p>Select whether to set the time information which is received through the Internet as the system time for your Digital Photo Frame.</p>
Timeout	<ul style="list-style-type: none"> 1 Minute, 3 Minutes, 5 Minutes <p>Select the time for the screensaver to start. However, if no button is operated for one minute, the screensaver starts, regardless of the Timeout Settings on the Main menu.</p>
Button Sound	<ul style="list-style-type: none"> On, Off <p>You can turn the sound of the operation buttons on or off.</p>
Brightness	<ul style="list-style-type: none"> 0~100 <p>Adjust the brightness from 0 to 100.</p>
Wireless Network (SSID)	Displays a list of available SSIDs when an access point exists in your vicinity.
Wireless Network Code	Displays the password required if the access point has a security setting.
Managment Web Address	Displays the webpage address to connect to Samsung Photo Frame Web Configuration.
Managment Password	Displays the password required to connect to Samsung Photo Frame Web Configuration. Enables case-sensitive mode.
Proxy Server	Displays the address of the currently configured proxy server. You can change it under the Settings section of the Samsung Photo Frame Web Configuration.
Proxy Required	<ul style="list-style-type: none"> Yes, No

	You can specify whether to use a proxy server.
Firmware Update	Update the product using external memory(SD/MMC/MS/XD,USB). Please visit www.samsung.com for the latest firmware update.
Reset Settings	<ul style="list-style-type: none"> ◆ Yes, No Reverts the product Settings to factory defaults.
Product Information	<ul style="list-style-type: none"> ◆ Model, Firmware Version, Copyright View the product information.

➔ Management Web



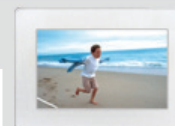
01 Go to [Settings]-[Management Web Address] in your Photo Frame and then open this URL using Internet Explorer on your PC.

02 When connected, the Welcome page will be displayed. Enter the Password which you can see in the [Settings]-[Management Password] of your Photo Frame in the [Password] box on the Welcome page, and click the [sign in] button.

Upper Menu	Sub Menu
	Description
Welcome	<ul style="list-style-type: none"> ◆ Password Enter the password displayed in Management Password . Enables case-sensitive mode.
	<ul style="list-style-type: none"> ◆ Now Playing You can monitor the photos which are being displayed in the slide show at the same time.
Web Photos	<ul style="list-style-type: none"> ◆ Photo Feeds, Photos Windows Live Spaces You can add or remove a website address from which you can receive photos.
	<ul style="list-style-type: none"> ◆ Photo Feeds, Photos Windows Live Spaces You can check the size of the photos in the addresses listed in Web Photos.
Settings	<ul style="list-style-type: none"> ◆ Basic, Administrator Password, Date and Time, Network Settings You can enter and change the product name, administrator password, time, and network proxy server, etc.
	<ul style="list-style-type: none"> ◆ Basic, Administrator Password, Date and Time, Network Settings You can enter and change the product name, administrator password, time, and network proxy server, etc.
Help	Displays the help section for using Samsung Photo Frame Web Configuration.

Using, copying or reproducing the whole or part of this manual without written permission from Samsung Electronics is prohibited. The content of this manual is subject to change without prior notice. ©2007 All rights reserved. Samsung Electronics.

Digital Photo Frame





Applications

- ▣ [Initial Settings](#)
- ▣ [Installation Program Guide and User Recommendations](#)
- ▣ [Settings for Sharing Photos on your PC - Configuring Your Windows](#)
- ▣ [Settings for Sharing Photos on your PC - Configuring Your Photo Frame](#)
- ▣ [Viewing the Photos from Windows Live Space](#)
- ▣ [Viewing the Photos via RSS](#)
- ▣ [Setting up Rating and Tags \(VISTA:Tags, XP:Labels\) on a PC](#)
- ▣ [I want to update firmware.](#)

▣ Initial Settings

※ To use the wireless sharing function provided with this product, Windows Vista must be running on your computer and a wireless LAN access point (AP) must be in your vicinity. (For Windows XP users, Windows Media Player 11 is required and must be installed on your PC.)

1. Choose Your Language



Turn on your Digital Photo Frame and select a language. The selected language is used as the OSD language and for the "Samsung Photo Frame Web Configuration" which is embedded in your Digital Photo Frame. You can change the language via Settings -> Language.

2. Choose Your WiFi Network

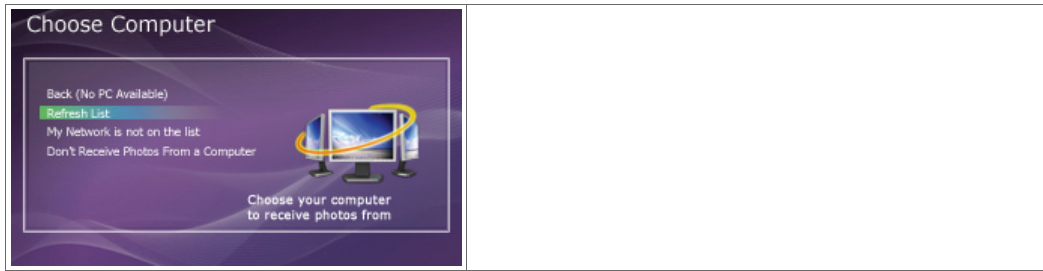


A list of APs is displayed. (If there are no APs displayed, click "Refresh Networks" to update the list.)

Select an AP to connect to and the connection state is displayed in a popup window and the "Choose Computer" screen will appear.

3. Choose Computer

A list of PCs is displayed. (If there are no PCs displayed, click "Refresh List" to update the list.) Select a PC to connect to and the Main screen will appear.



- ✘ Ensure that the settings are configured as shown below. Otherwise, your PC may not be displayed in the list or you may not be able to connect to it.
- ✘ In Vista, select Control Panel > Network and Sharing Center > Customize. Check whether the Location type is set to Private. Select Digital Photo Frame from the Windows Media Player > Library > Media Sharing list. Check whether it is set to Allow.

Installation Program Guide and User Recommendations

01 Windows XP

- 01 We highly recommend installing **.Net Framework 3.0**.
- 02 Click on the "Frame Manager" icon in the Manual - Main screen to run the installation file.
Installing Frame Manager
- 03 **Windows Media Player 11** or later must be installed.
- 04 **Digital Image Library Starter Edition (DISE)**
: This program allows you to change the ratings for the photos on your Digital Photo Frame via your PC.
- ✘ Recommendations when using the Digital Photo Frame: Internet Explorer 7.0 or higher

02 Windows Vista

- 01 Click on the "Frame Manager" icon in the Manual - Main screen to run the installation file.
Installing Frame Manager

✘ Frame Manager

Frame Manager is a program needed to use Samsung Photo Frame Web Configuration. You can find the installed Frame Manager in C:/Program Files/Samsung/Frame Manager. To run Frame Manager, click Start and point to Programs, and then click Frame Manager > Frame Manager.

Settings for Sharing the Photos on your PC - Configuring Your Windows Vista

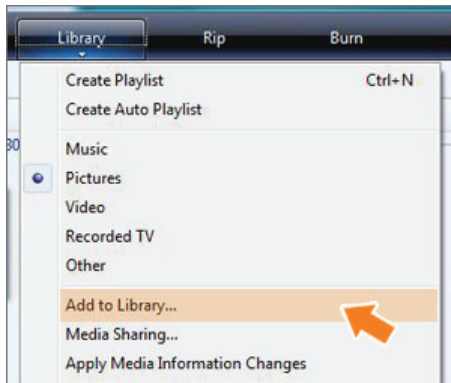
01 Adding Photos to the Library



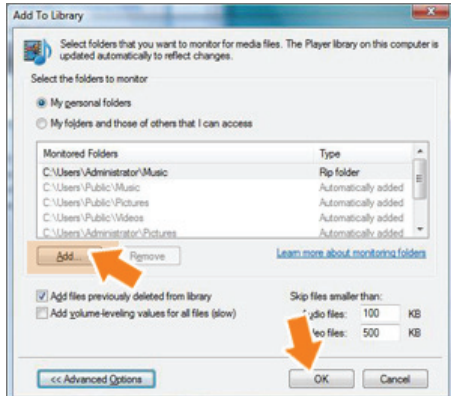
- 01 Run Windows Media Player.



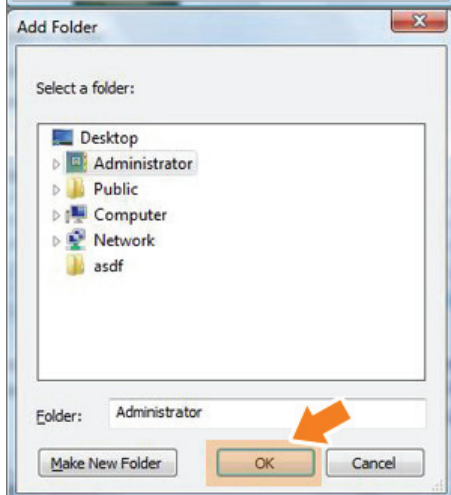
- 02 Click the [Library] tab at the top.



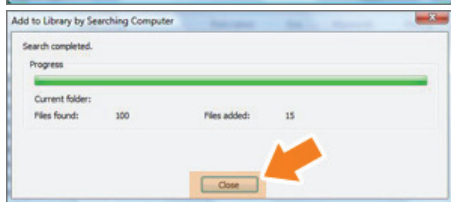
03 Click [Add To Library] in the [Library] tab.



04 In the [Add To Library] window, select [My personal folders] under the [Select the folders to monitor] section and select the folder containing photos and click [Add].

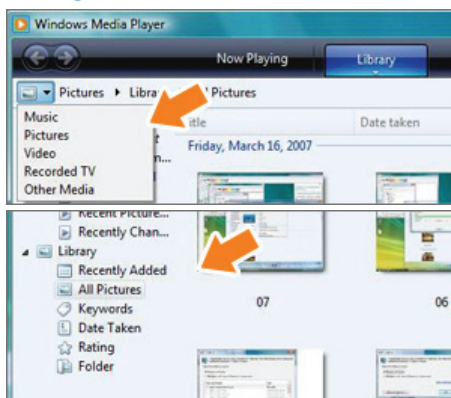


Select the folder to share and click [OK] to add it.



05 When you click [OK], the [Add To Library] window is closed and the [Add to Library by Searching Computer] is displayed. Wait until it finishes the operation and click [Close] when it is completed.

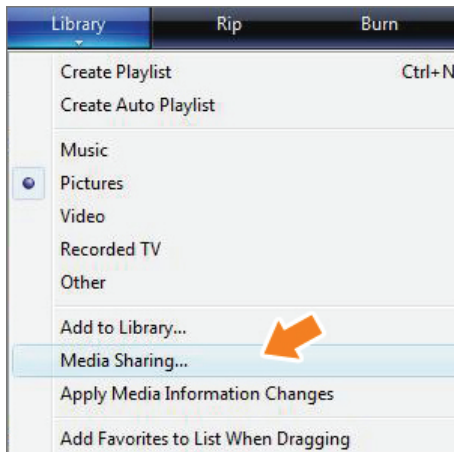
02 Checking Shared Photos



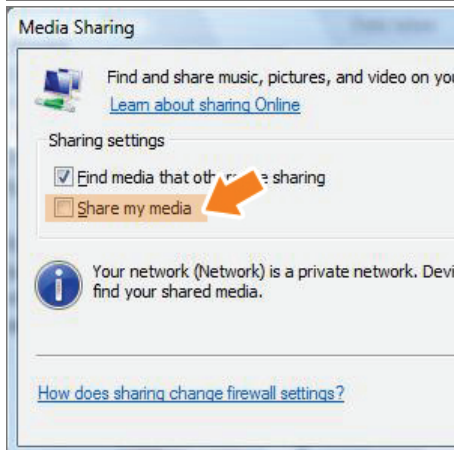
01 In the Windows Media Player, set the Category, which is under the [↔] symbol at the top left, to [Picture].

02 In the [Library], select Recently added, All Pictures, Keywords, Date Taken, Rating, or Folder settings and check whether the added photos exist in the library.

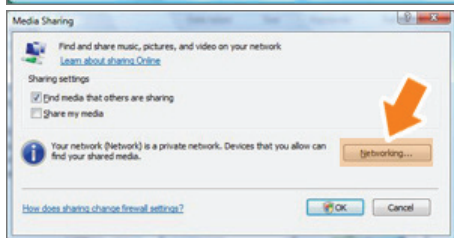
03 Sharing Settings for Accepting Connections from Your Photo Frame



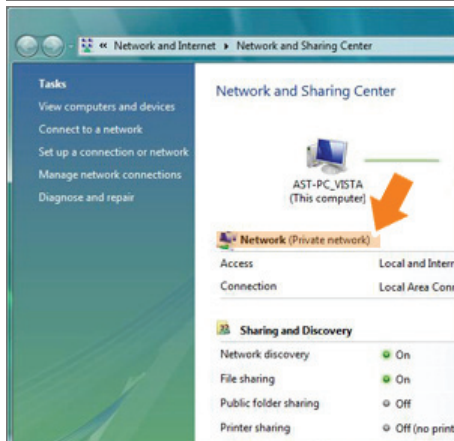
01 In the [Library] tab, click on [Media Sharing].



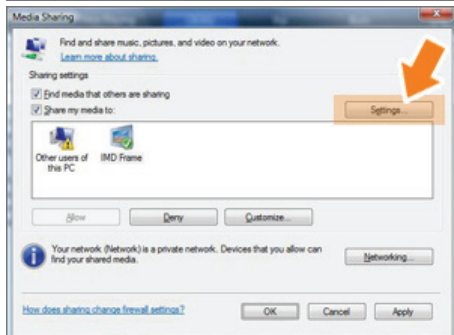
02 In the [Media Sharing] window, check the [Share my media] checkbox under [Sharing settings].



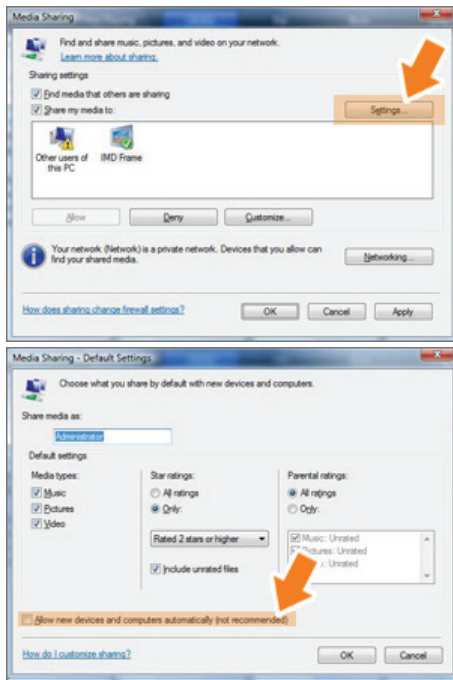
03 If no [Available device] is displayed in the [Media Sharing] window, proceed to steps 4. If displayed, proceed to step 5.



04 In the [Media Sharing] window, click [Networking] and check whether the current network is set to [Private network]. If not, set it to [Private Network].



05 If your network is a Private network, the [Available Device] list and the [Settings] button are displayed in the [Media Sharing] window.



06 In the [Media Sharing] window, click [Settings]. The [Media Sharing-Default Settings] window is displayed.

07 In the [Media Sharing-Default Settings] window, set the [Media Type] to [Picture], both [Star ratings] and [Parental ratings] to [All ratings] or a required rating under the [Default Settings] section. If you want to add a device or computer which tries to connect to the library to the list automatically, check the [Add new devices and computers automatically] checkbox.

✘ Only photos can be transmitted via PC sharing.

▣ Settings for Sharing the Photos on Your PC - Configuring Your Photo Frame

01 Checking Network Connections



01 Check whether the Network icon is displayed at the left top of the Main screen.

02 If the Network icon is displayed, proceed to the **Checking Computer Connections** section described below. If it is not displayed, move to [Settings]-[Wireless Network(SSID)].

✘ SSID : Service Set Identifier

03 In the [Wireless Network(SSID)] window, select the SSID to which you want to connect your Digital Photo Frame to. If no available SSID is displayed, click [Refresh Networks] to update the list.

If you select this when the SSID is encrypted, a password input window is displayed. You can only be connected to the network if you enter the correct password.

04 If the "Connected" message is displayed, it means that your Digital Photo Frame is connected to the network.