

# SyncMaster 323T,403T



***MDC System***

## INDEX



Main Page



Safety Instructions



Notational



Power



Installation



Cleaning



Other



Introduction



Unpacking



Front



Rear



Remote Control



Mechanical Lay-out



Setup



Installing Stand Kit



Connecting Your Monitor



Multiple Display Control (MDC)



Adjusting Your LCD Monitor



User control buttons



OSD Functions



Troubleshooting



Check before Calling for Service



Problems and Solutions



Q & A



Specifications



General Specifications



PowerSaver



Preset Timing Modes



Information



Service Center



Terms



Regulatory



Natural Color



For Better Display



Authority

## Notational

Please read the following safety instructions as they are designed to prevent damage to property and harm to the user.



### Warning / Caution



Failure to follow directions noted by this symbol could result in bodily harm or damage to equipment.

### Notational Conventions



Prohibited



Do not disassemble



Do not touch



Important to read and understand at all times



Disconnect the plug from the outlet



Grounding to prevent an electric shock

## Power



When not used for extended periods of time, set your PC to DPMS. If using a screen saver, set it to the active screen mode.



**Do not use a damaged or loose plug.**

- This may cause an electric shock or fire.



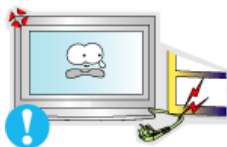
**Do not pull the plug out by the wire nor touch the plug with wet hands.**

- This may cause an electric shock or fire.



**Use only a properly grounded plug and receptacle.**

- An improper ground may cause electric shock or equipment damage.



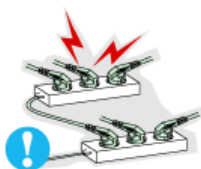
**Do not excessively bend the plug and wire nor place heavy objects upon them, which could cause damage.**

- This may cause an electric shock or fire.



**Disconnect the plug from the outlet during storms or lightening or if it is not used for a long period of time.**

- Failure to do so may cause an electric shock or fire.



**Do not connect too many extension cords or plugs to an outlet.**

- This may cause a fire.

## Installation



- **Do not cover the vents on the monitor cabinet.**
  - Bad ventilation may cause a breakdown or fire.



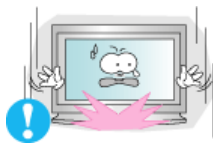
- **Put your monitor in a location with low humidity and a minimum of dust.**
  - An electric shock or fire could result inside the monitor.



- **Do not drop the monitor when moving it.**
  - This may cause damage to the product or human body.



- **Place the monitor on a flat and stable surface.**
  - The monitor can cause injury by falling.



- **Set down the monitor carefully.**
  - It could be damaged or broken.



- **Do not place the monitor face down.**
  - The TFT-LCD surface may be damaged.

## Cleaning



When cleaning the monitor case or the surface of the TFT-LCD, wipe with a slightly moistened, soft fabric.



- Do not spray detergent directly on the monitor.



- Use the recommended detergent with a smooth cloth.



- If the connector between the plug and the pin is dusty or dirty, clean it properly with a dry cloth.

- A dirty connector can cause an electric shock or fire.



- Do not set a glass of water, chemicals or any small metal objects on the monitor.

- This may cause damage, electric shock or a fire.
- If a foreign substance gets into the monitor, disconnect the plug and then contact a [service center](#).

## Other



● **Do not remove cover(or back). No user serviceable parts inside.**

- This may cause an electric shock or a fire.
- Refer servicing to qualified service personnel.



● **If your monitor does not operate normally - in particular, if there are any unusual sounds or smells coming from it - unplug it immediately and [contact an authorized dealer or service](#).**

- This may cause an electric shock or fire.



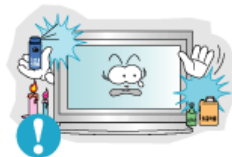
● **Do not place any heavy objects on the monitor.**

- This may cause an electric shock or a fire.



● **For each hour of looking at the monitor, you should let your eyes rest for 5 minutes.**

- This will reduce eye fatigue.



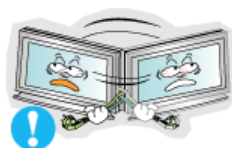
● **Do not use or store inflammable substances near the monitor.**

- This may cause an explosion or fire.



● **Do not try to move the monitor by pulling on the wire or the signal cable.**

- This may cause a breakdown, electric shock or a fire due to damage to the cable.



● **Do not move the monitor right or left by pulling only the wire or the signal cable.**

- This may cause a breakdown, electric shock or a fire due to damage to the cable.



● **Never insert anything metallic into the monitor openings.**

- This may cause an electric shock, fire or injury.



● **If you view a fixed screen for an extended period of time, residual image or blurriness may appear.**

- Change the mode to energy save or set a screensaver to moving picture when you need to be away from the monitor for an extended period of time.

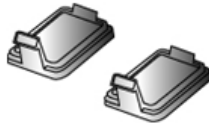
## Unpacking



Please make sure the following items are included with your monitor. If any items are missing, [contact your dealer](#).



Power Cord



Cover-hole



Signal Cable  
(15 pin D-Sub)



Remote Control /  
Batteries (AAA X 2)



Monitor



RS232C CABLE



User's Guide CD

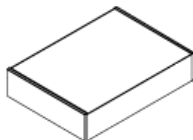


Warranty Card  
(Not available in all locations)



Temporary Stand

● **Sold separately**



Wall Mount KIT



Speaker Set



Stand Kit



PIVOT Installation CD



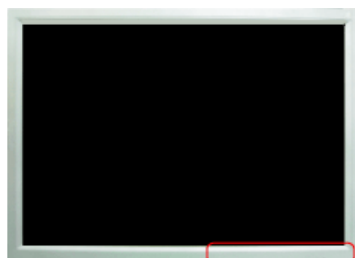
Contact a local Samsung Electronics [service center](#) to buy optional items.



## Front




For detailed information concerning the monitor functions, refer to [User Controls](#) under Adjusting Your Monitor. The monitor's front configuration may vary slightly depending on the monitor model.

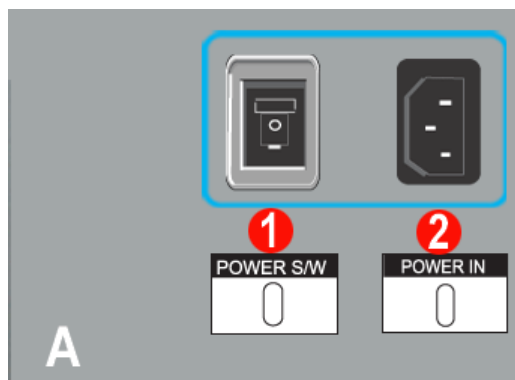
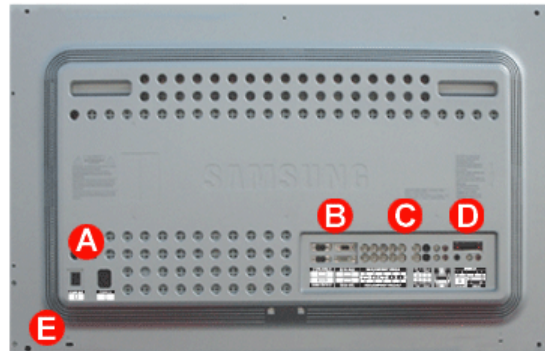


- |   |                          |
|---|--------------------------|
| 1. Auto button  | 6. Menu button           |
| 2. Source button  | 7. Power button          |
| 3. Exit button  | 8. Power indicator       |
| 4. Navigate button (Up-Down Button)                     | 9. Remote Control Sensor |
| 5. Adjust button (Left-Right Button)<br>/ Volume button |                          |

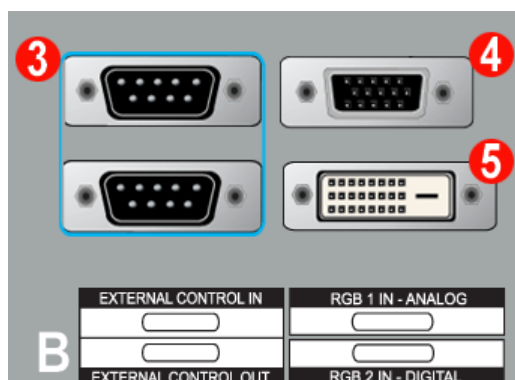
## Rear

## SyncMaster 403T

 For detailed information concerning cable connections, refer to [Connecting Cables](#) under Setup.  
The monitor's rear configuration may vary slightly depending on the monitor model.

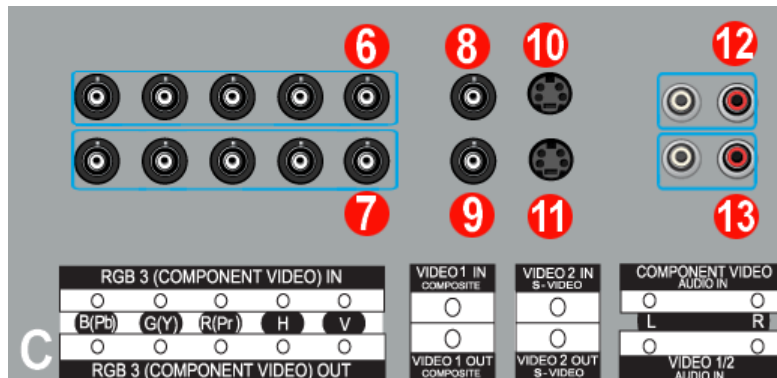


1. Power On/Off Switch
2. Power port



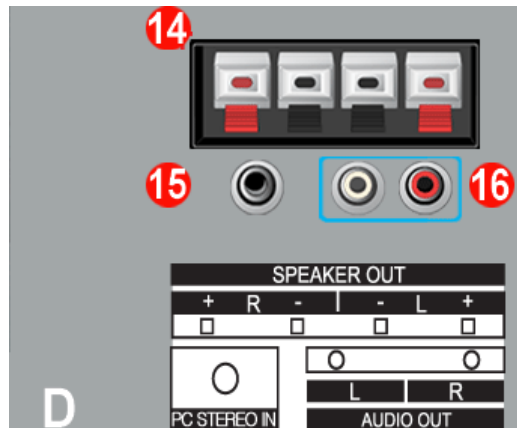
3. **EXTERNAL CONTROL (RS232C Serial PORT)** : MDC(Multiple Device Control) Program Port
4. **PC Video Connection Terminal**  
: Using D-Sub Cable (15 pin D-Sub) - RGB 1 mode (Analog PC)
5. **PC Video Connection Terminal**  
: Using DVI Cable (DVI-D to DVI-D) - RGB 2 mode (Digital PC)

## Rear

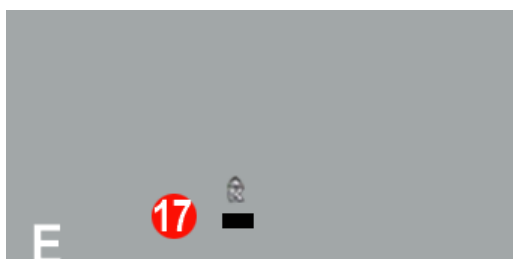


6. **PC Video Connection Terminal / Component Connection Terminal : BNC cable (Input)**  
- RGB 3 (Analog PC) Connection : connecting B, G, R, H, V port  
- Component Connection : connecting Pb, Y, Pr port
7. **PC Video Loopout Connection Terminal (RGB 3 (Analog PC)) / Component Loopout Connection Terminal (Component) - BNC cable(Output)**
8. **CVBS Video Connection Terminal : Video 1 mode (Input)**
9. **CVBS Video Loopout Connection Terminal (Output)**
10. **S-Video Connection Terminal : Video 2 mode (Input)**
11. **S-Video Loopout Connection Terminal (Output)**
12. **Component Audio Connection Terminal (Input)**  
: When the input signal is connected to Terminal 6, the audio must be connect to this terminal only.
13. **CVBS, S-Video Audio Connection Terminal (Input)**  
: When the input signal is connected to Terminal 8 or 10, the audio must be connect to this terminal only.

**Loopout Connection : Up to 5 monitors supported.**




14. **Speaker Out**
15. **PC Stereo Connection Terminal (Input)**
16. **Audio Line-out Connection Terminal (Output)**

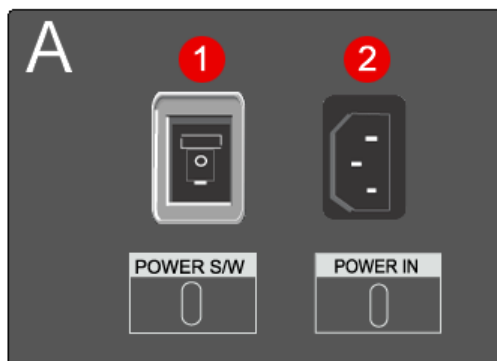
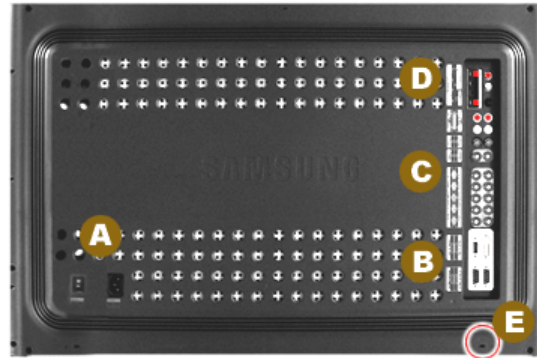


17. **Kensington Lock**

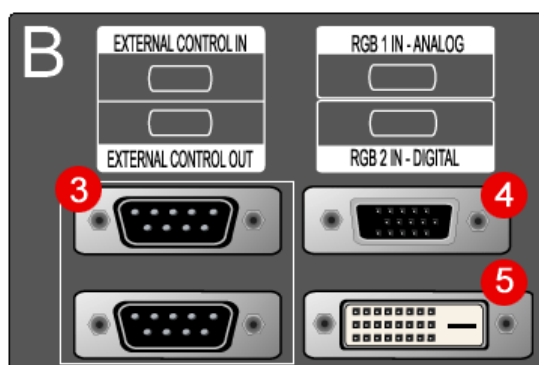
## Rear

## SyncMaster 323T

 For detailed information concerning cable connections, refer to [Connecting Cables](#) under Setup.  
The monitor's rear configuration may vary slightly depending on the monitor model.

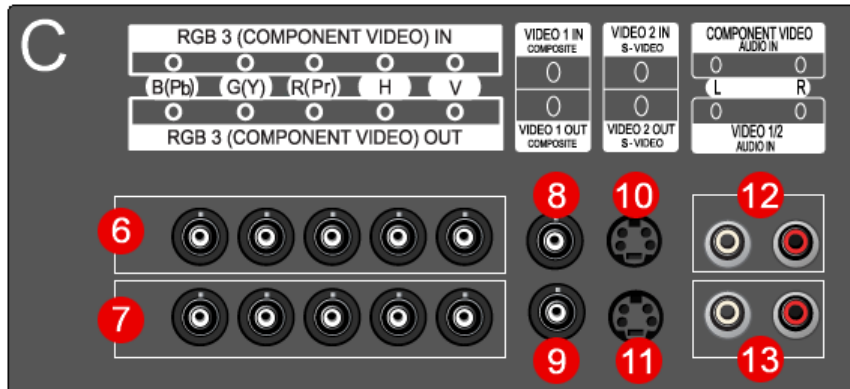


1. Power On/Off Switch
2. Power port



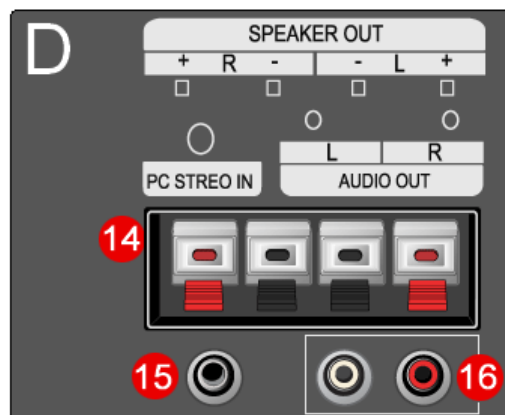
3. **EXTERNAL CONTROL (RS232C Serial PORT)** : MDC(Multiple Device Control) Program Port
4. **PC Video Connection Terminal**  
: Using D-Sub Cable (15 pin D-Sub) - RGB 1 mode (Analog PC)
5. **PC Video Connection Terminal**  
: Using DVI Cable (DVI-D to DVI-D) - RGB 2 mode (Digital PC)

## Rear

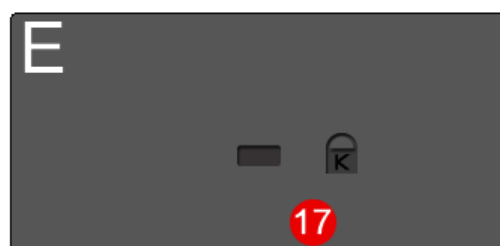


6. **PC Video Connection Terminal / Component Connection Terminal : BNC cable (Input)**  
 - RGB 3 (Analog PC) Connection : connecting B, G, R, H, V port  
 - Component Connection : connecting Pb, Y, Pr port
7. **PC Video Loopout Connection Terminal (RGB 3 (Analog PC)) / Component Loopout Connection Terminal (Component) - BNC cable(Output)**
8. **CVBS Video Connection Terminal : Video 1 mode (Input)**
9. **CVBS Video Loopout Connection Terminal (Output)**
10. **S-Video Connection Terminal : Video 2 mode (Input)**
11. **S-Video Loopout Connection Terminal (Output)**
12. **Component Audio Connection Terminal (Input)**  
 : When the input signal is connected to Terminal 6, the audio must be connect to this terminal only.
13. **CVBS, S-Video Audio Connection Terminal (Input)**  
 : When the input signal is connected to Terminal 8 or 10, the audio must be connect to this terminal only.

 **Loopout Connection : Up to 5 monitors supported.**



14. **Speaker Out**
15. **PC Stereo Connection Terminal (Input)**
16. **Audio Line-out Connection Terminal (Output)**



17. **Kensington Lock**

## Remote Control



For detailed information of the Remote Control Unit functions, refer to Adjusting Your Monitor > User Controls > User Control Buttons > [Remote Control buttons](#).

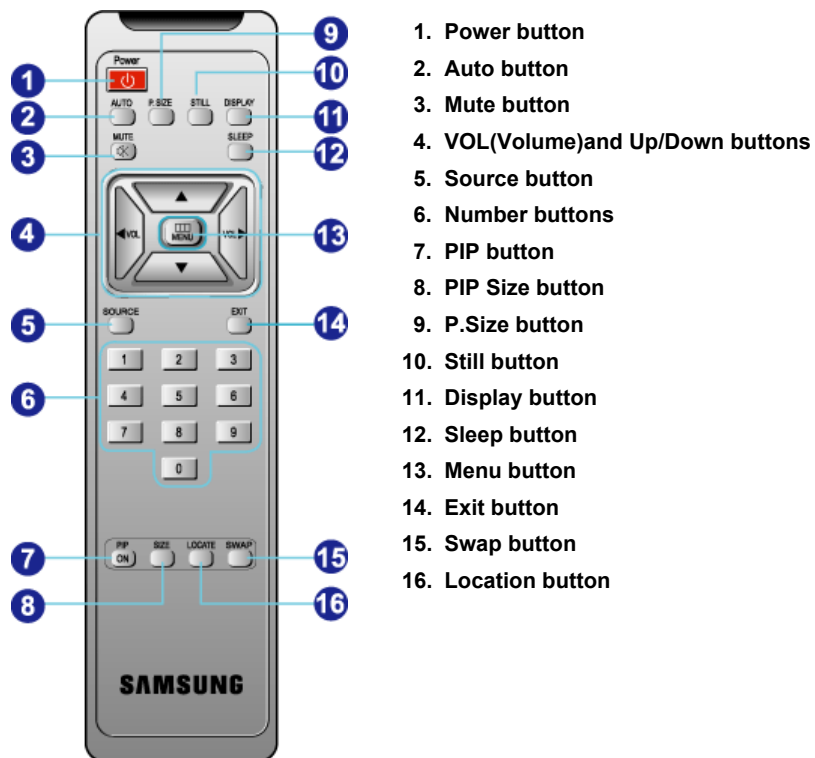
The remote control's configuration may vary slightly depending on the monitor model.



The Remote control may function within a range of 0.23 to 33 feet (7cm to 10m) and 30 degrees to the left and right of the monitor's Remote Control Reception sensor.

[Button Names](#) | [Replacing Batteries](#) | [Usage](#)

### 1. Button Names



### 2. Replacing Batteries

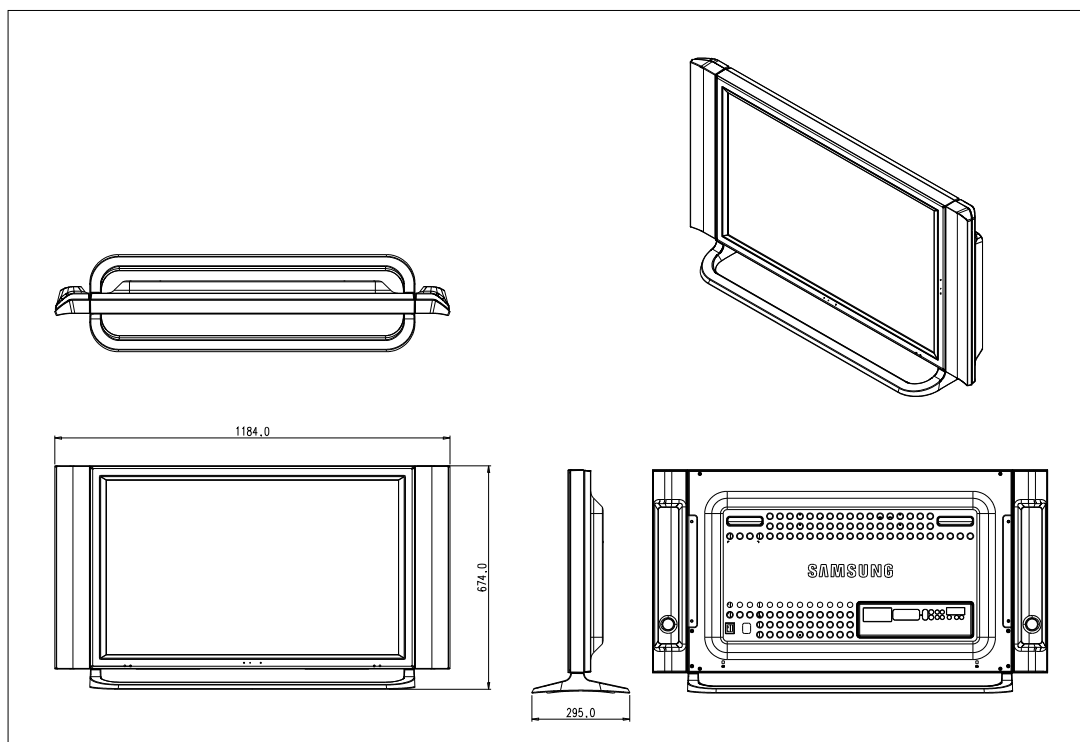


- Slide out the cover pressing part marked .
- Insert the batteries matching their polarities (+, -).
- Slide in the cover.

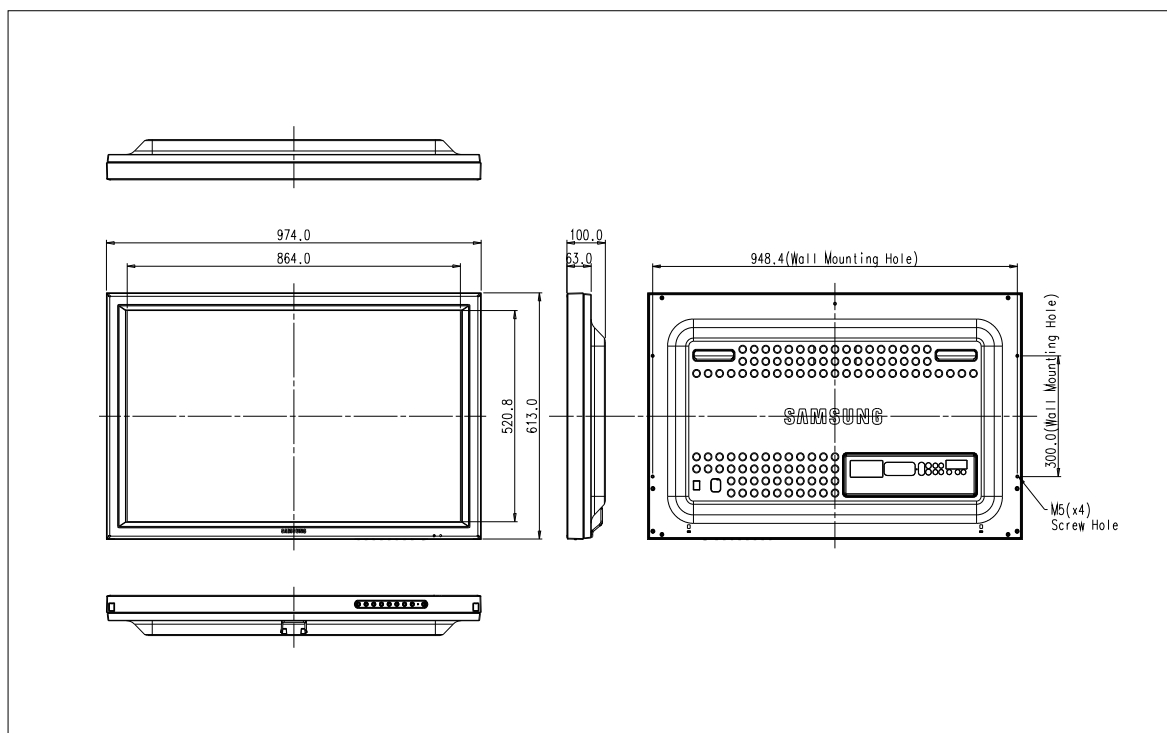
## Mechanical Lay-out

## SyncMaster 403T

### 1. Mechanical Lay-out

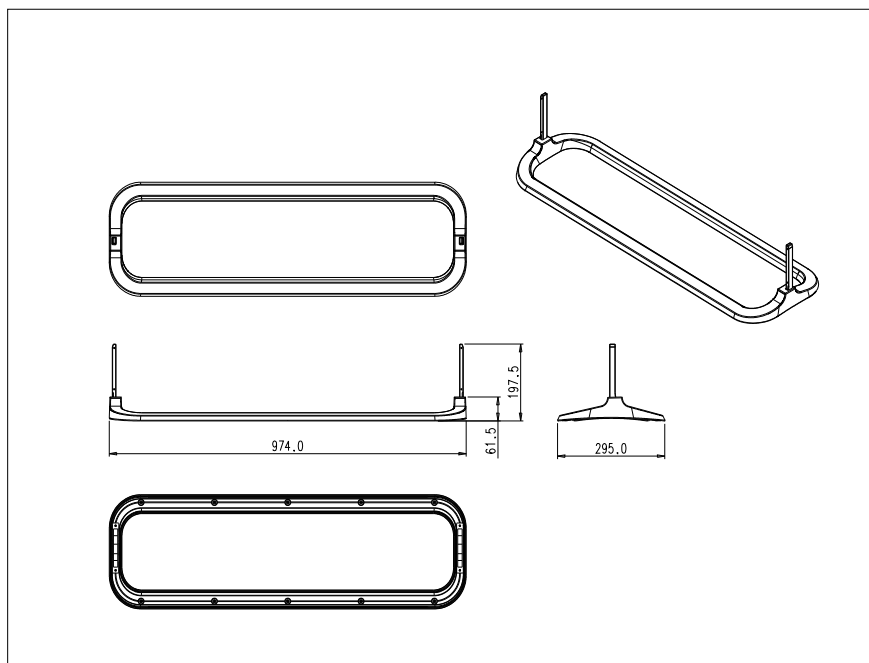


### 2. Monitor Head

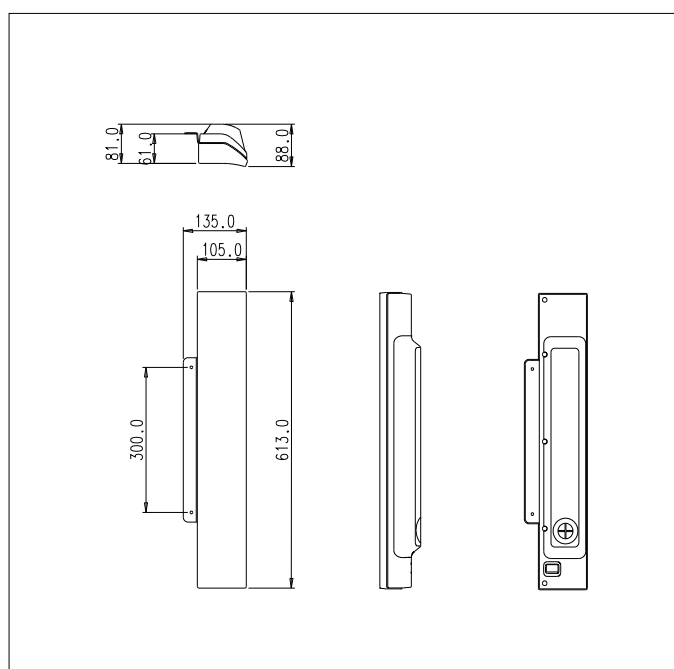


## Mechanical Lay-out

### 3. Stand



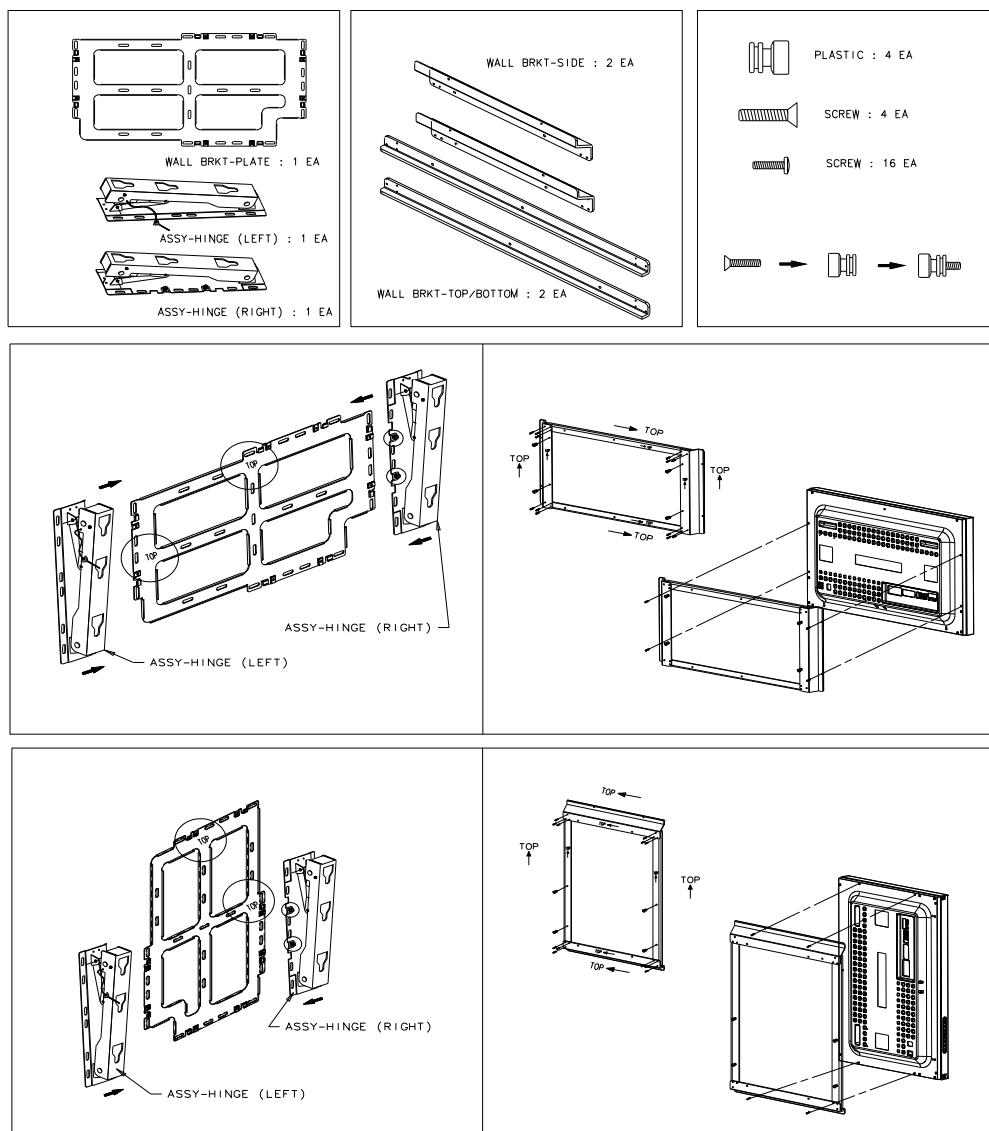
### 4. Speaker





## Mechanical Lay-out

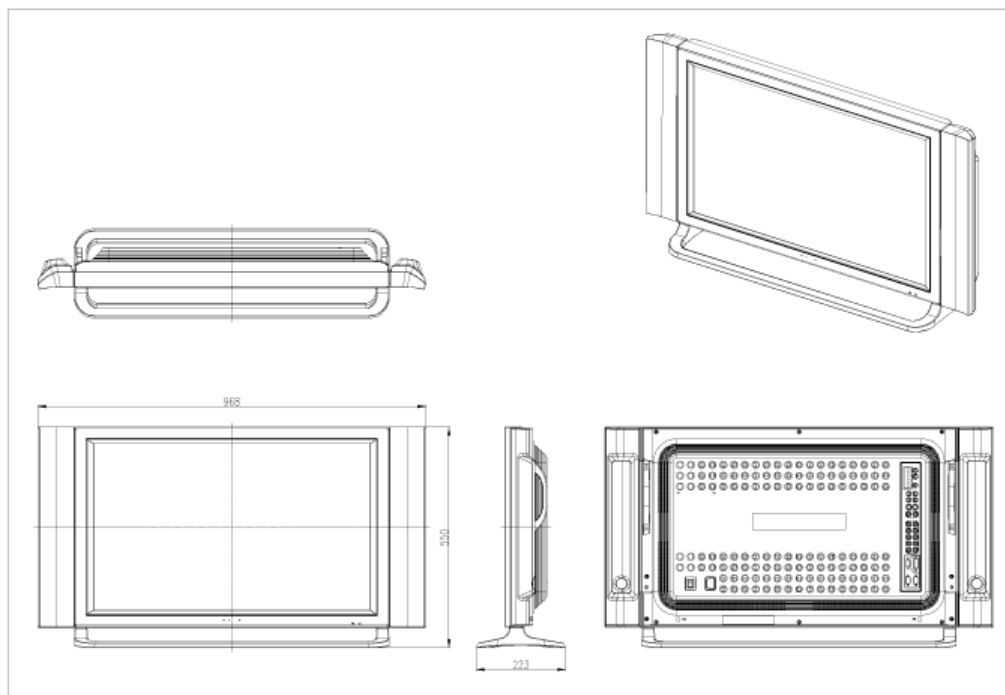
### 5. Mounting Bracket



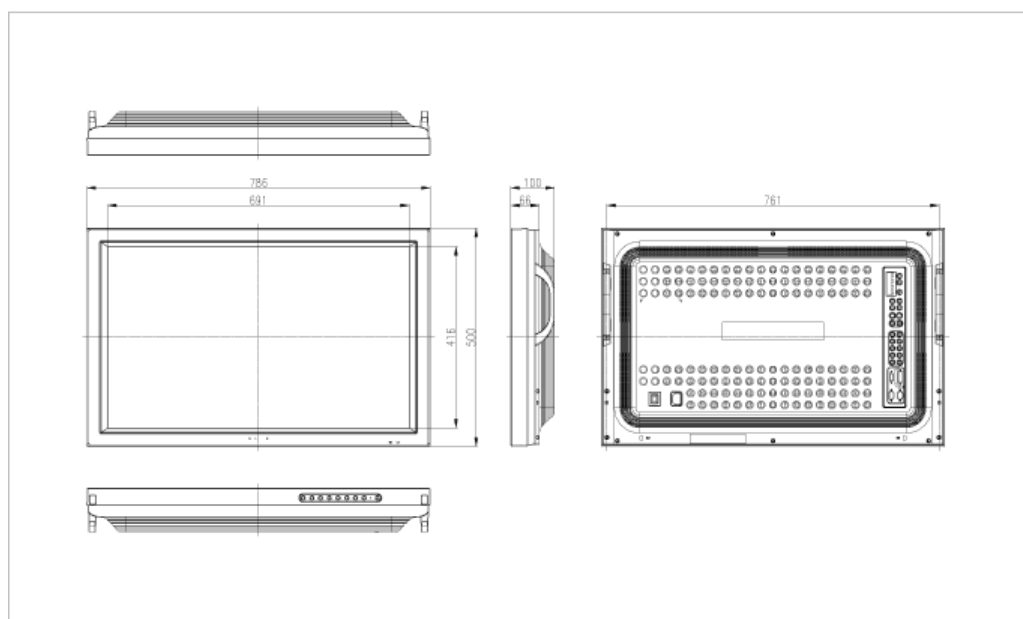
## Mechanical Lay-out

## SyncMaster 323T

### 1. Mechanical Lay-out

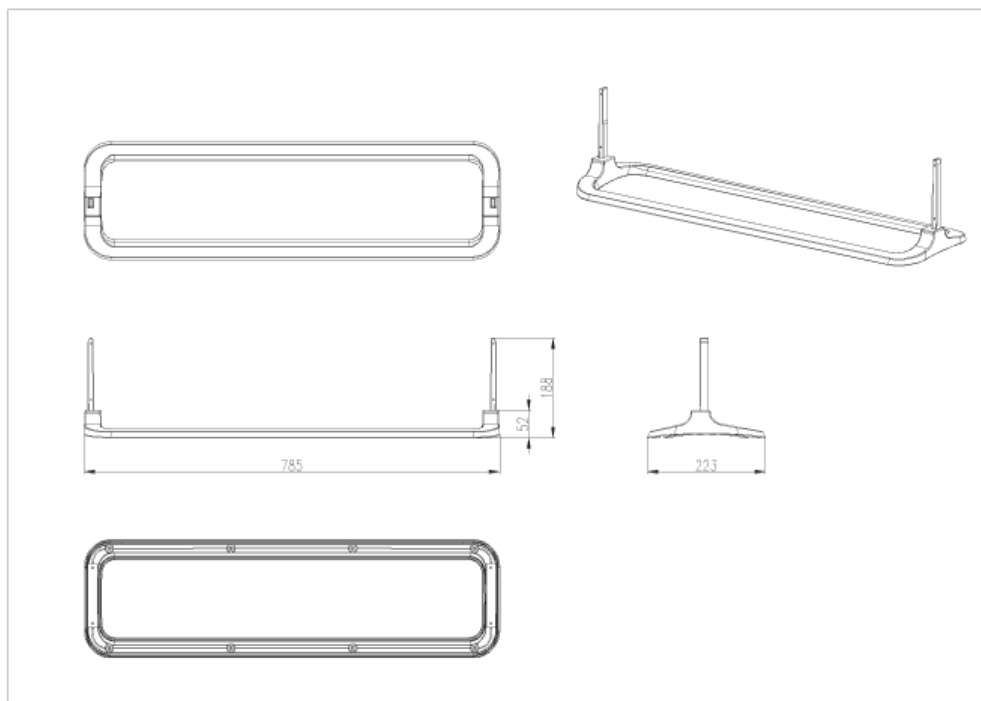


### 2. Monitor Head

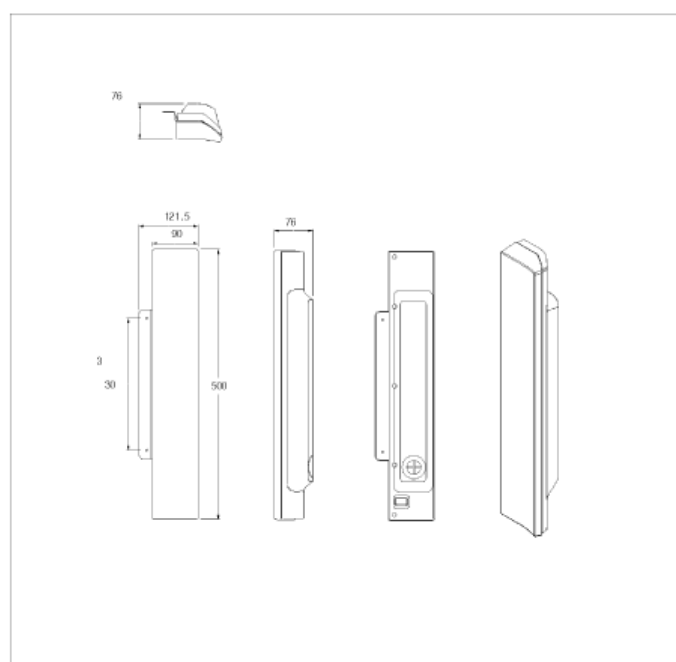


## Mechanical Lay-out

### 3. Stand



### 4. Speaker



## Mechanical Lay-out

### 5. Mounting Bracket

