

# SyncMaster 403T



**MDC System**

- Main Page
- Safety Instructions
  - Notational
  - Power
  - Installation
  - Cleaning
  - Other
- Introduction
  - Unpacking
  - Front
  - Rear
  - Remote Control
  - Mechanical Lay-out
- Setup
  - Installing Stand Kit
  - Connecting Your Monitor
  - Multiple Display Control (MDC)

- Adjusting Your LCD Monitor
  - User Controls
    - User control buttons
  - On-Screen Display
    - OSD Functions
    - Screen Adjustment Animation Clips
- Troubleshooting
  - Check before Calling for Service
  - Problems and Solutions
  - Q & A
- Specifications
  - General Specifications
  - PowerSaver
  - Preset Timing Modes
- Information
  - Service Center
  - Terms
  - Regulatory
  - Natural Color
  - Authority



#### Safety Instructions

- ▶ **Notational**
- ▶ Power
- ▶ Installation
- ▶ Cleaning
- ▶ Other

[Main Page](#)

Please read the following safety instructions as they are designed to prevent damage to property and harm to the user.



#### Warning / Caution



Failure to follow directions noted by this symbol could result in bodily harm or damage to equipment.

#### Notational Conventions



Prohibited



Do not disassemble



Do not touch



Important to read and understand at all times



Disconnect the plug from the outlet



Grounding to prevent an electric shock



## Safety Instructions

► Notational

► Power

► Installation

► Cleaning

► Other

Main Page



When not used for extended periods of time, set your PC to DPMS. If using a screen saver, set it to the active screen mode.



### Do not use a damaged or loose plug.

- This may cause an electric shock or fire.



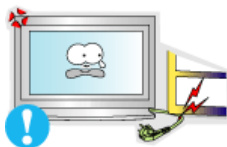
### Do not pull the plug out by the wire nor touch the plug with wet hands.

- This may cause an electric shock or fire.



### Use only a properly grounded plug and receptacle.

- An improper ground may cause electric shock or equipment damage.



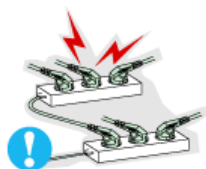
### Do not excessively bend the plug and wire nor place heavy objects upon them, which could cause damage.

- This may cause an electric shock or fire.



### Disconnect the plug from the outlet during storms or lightening or if it is not used for a long period of time.

- Failure to do so may cause an electric shock or fire.



### Do not connect too many extension cords or plugs to an outlet.

- This may cause a fire.



#### Safety Instructions

► Notational

► Power

► Installation

► Cleaning

► Other

Main Page



**Do not cover the vents on the monitor cabinet.**

- Bad ventilation may cause a breakdown or fire.



**Put your monitor in a location with low humidity and a minimum of dust.**

- An electric shock or fire could result inside the monitor.



**Do not drop the monitor when moving it.**

- This may cause damage to the product or human body.



**Place the monitor on a flat and stable surface.**

- The monitor can cause injury by falling.



**Set down the monitor carefully.**

- It could be damaged or broken.



**Do not place the monitor face down.**

- The TFT-LCD surface may be damaged.



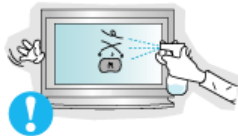
Safety Instructions

- ▶ Notational
- ▶ Power
- ▶ Installation
- ▶ **Cleaning**
- ▶ Other

Main Page



When cleaning the monitor case or the surface of the TFT-LCD, wipe with a slightly moistened, soft fabric.



- **Do not spray detergent directly on the monitor.**



- **Use the recommended detergent with a smooth cloth.**



- **If the connector between the plug and the pin is dusty or dirty, clean it properly with a dry cloth.**

- A dirty connector can cause an electric shock or fire.



- **Do not set a glass of water, chemicals or any small metal objects on the monitor.**

- This may cause damage, electric shock or a fire.
- If a foreign substance gets into the monitor, disconnect the plug and then contact a [service center](#).



## Safety Instructions

- ▶ Notational
- ▶ Power
- ▶ Installation
- ▶ Cleaning
- ▶ Other

Main Page



### Do not remove cover(or back). No user serviceable parts inside.

- This may cause an electric shock or a fire.
- Refer servicing to qualified service personnel.



### If your monitor does not operate normally - in particular, if there are any unusual sounds or smells coming from it - unplug it immediately and contact an authorized dealer or service.

- This may cause an electric shock or fire.



### Do not place any heavy objects on the monitor.

- This may cause an electric shock or a fire.



### For each hour of looking at the monitor, you should let your eyes rest for 5 minutes.

- This will reduce eye fatigue.



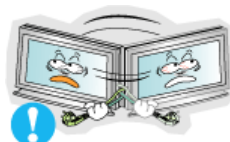
### Do not use or store inflammable substances near the monitor.

- This may cause an explosion or fire.



### Do not try to move the monitor by pulling on the wire or the signal cable.

- This may cause a breakdown, electric shock or a fire due to damage to the cable.



### Do not move the monitor right or left by pulling only the wire or the signal cable.

- This may cause a breakdown, electric shock or a fire due to damage to the cable.



### Never insert anything metallic into the monitor openings.

- This may cause an electric shock, fire or injury.



Introduction

- **Unpacking**
- Front
- Rear
- Remote Control
- Mechanical Lay-out

Main Page



Please make sure the following items are included with your monitor. If any items are missing, [contact your dealer](#).

● **Gernal**



Power Cord



Signal Cable  
(15 pin D-Sub)



Remote Control /  
Batteries (AAA X 2)



Monitor



RS232C CABLE

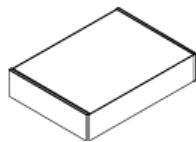


User's Guide CD



Stand

● **Option**



Wall Mount KIT



Speaker Set



Stand Kit



PIVOT Installation CD



Contact a local Samsung Electronics [service center](#) to buy optional items.





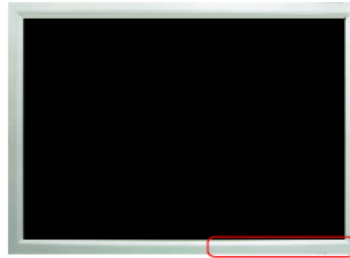
## Introduction

- ▶ Unpacking
- ▶ **Front**
- ▶ Rear
- ▶ Remote Control
- ▶ Mechanical Lay-out

Main Page



For detailed information concerning the monitor functions, refer to [User Controls](#) under Adjusting Your Monitor. The monitor's front configuration may vary slightly depending on the monitor model.



- |                                  |                          |
|----------------------------------|--------------------------|
| 1. Auto button                   | 6. Menu button           |
| 2. Source button                 | 7. Power button          |
| 3. Exit button                   | 8. Power indicator       |
| 4. Navigate button (Control OSD) | 9. Remote Control Sensor |
| 5. Adjust button (Control OSD)   |                          |



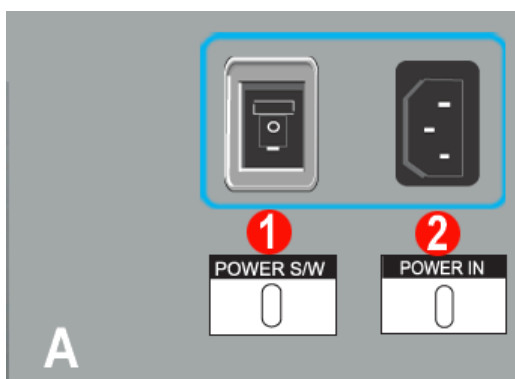
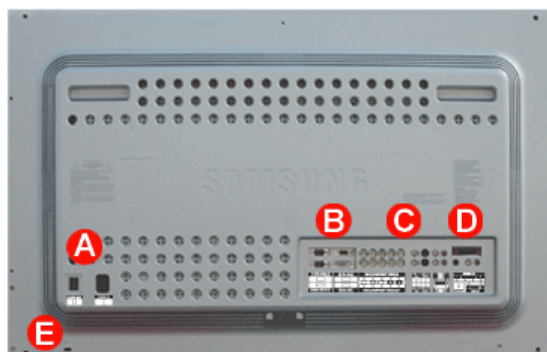
Introduction

- ▶ Unpacking
- ▶ Front
- ▶ **Rear**
- ▶ Remote Control
- ▶ Mechanical Lay-out

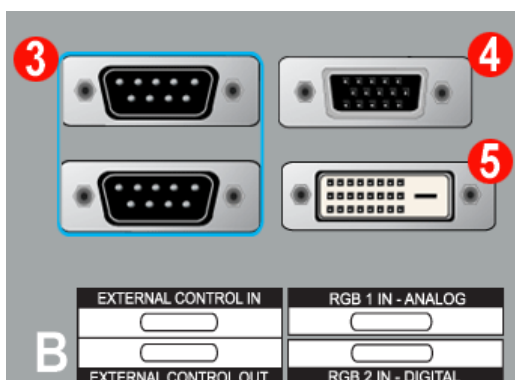
Main Page



For detailed information concerning cable connections, refer to [Connecting Cables](#) under Setup. The monitor's rear configuration may vary slightly depending on the monitor model.



1. Power On/Off Switch
2. Power port



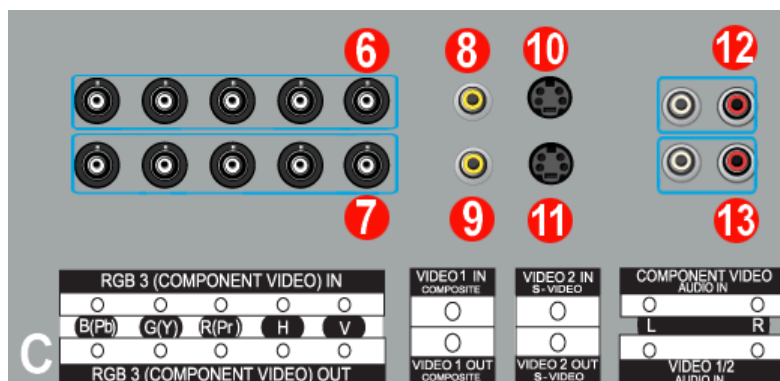
3. **EXTERNAL CONTROL (RS232C Serial PORT)** : MDC(Multiple Device Control) Program Port
4. **PC Video Connection Terminal**  
: Using D-Sub Cable (15 pin D-Sub) - RGB 1 mode (Analog PC)
5. **PC Video Connection Terminal**  
: Using DVI Cable (DVI-D to DVI-D) - RGB 2 mode (Digital PC)



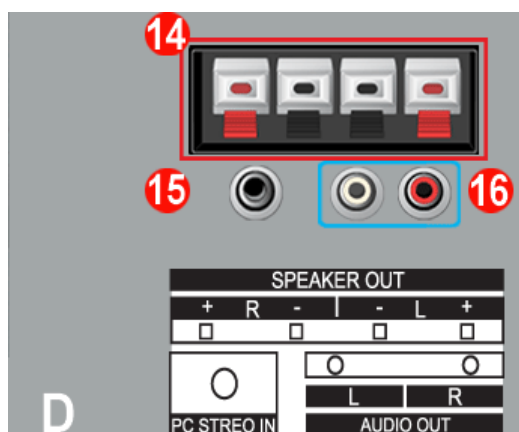
Introduction

- Unpacking
- Front
- Rear
- Remote Control
- Mechanical Lay-out

Main Page



6. **PC Video Connection Terminal / Component Connection Terminal : BNC cable (Input)**
  - RGB 3 (Analog PC) Connection : connecting R, G, B, H, V port
  - Component Connection : connecting Y, Pb, Pr port
7. **PC Video Loopout Connection Terminal (RGB 3 (Analog PC)) / Component Loopout Connection Terminal (Component) - BNC cable(Output)**
8. **CVBS Video Connection Terminal : Video 1 mode (Input)**
9. **CVBS Video Loopout Connection Terminal (Output)**
10. **S-Video Connection Terminal : Video 2 mode (Input)**
11. **S-Video Loopout Connection Terminal (Output)**
12. **Component Audio Connection Terminal (Input)**
  - : When the input signal is connected to Terminal 6, the audio must be connect to this terminal only.
13. **CVBS, S-Video Audio Connection Terminal (Input)**
  - : When the input signal is connected to Terminal 8 or 10, the audio must be connect to this terminal only.



14. **Speaker Out (Optional)**
15. **PC Stereo Connection Terminal (Input)**
16. **Audio Line-out Connection Terminal (Output)**



17. **Kensington Lock**



Introduction

- ▶ Unpacking
- ▶ Front
- ▶ Rear
- ▶ Remote Control
- ▶ Mechanical Lay-out

Main Page



For detailed information of the Remote Control Unit functions, refer to Adjusting Your Monitor > User Controls > User Control Buttons > [Remote Control buttons](#).

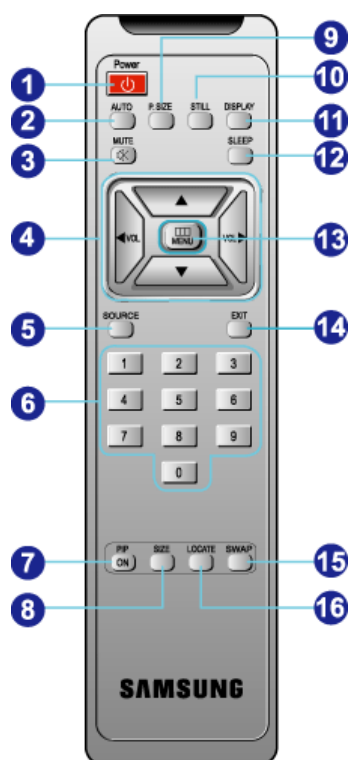
The remote control's configuration may vary slightly depending on the monitor model.



The Remote control may function within a range of 0.23 to 33 feet (7cm to 10m) and 30 degrees to the left and right of the monitor's Remote Control Reception sensor.

[Button Names](#) | [Replacing Batteries](#) | [Usage](#)


## 1. Button Names



1. Power button
2. Auto button
3. Mute button
4. VOL(Volume)and Up/Down buttons
5. Source button
6. Number buttons
7. PIP button
8. PIP Size button
9. P.Size button
10. Still button
11. Display button
12. Sleep button
13. Menu button
14. Exit button
15. Swap button
16. Location button

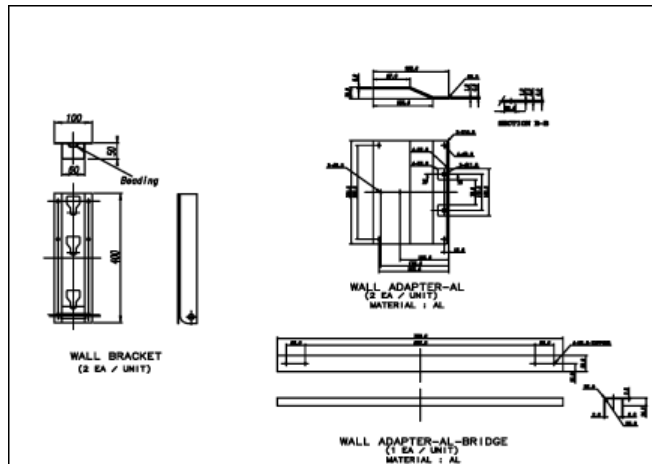
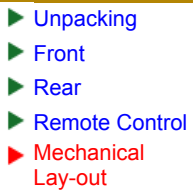
## 2. Replacing Batteries



1. Slide out the cover pressing part marked .
2. Insert the batteries matching their polarities (+, -).
3. Slide in the cover.



## 1. Mounting BRKT





Setup

- ▶ Installing Stand Kit
- ▶ Connecting Your Monitor
- ▶ Multiple Display Control (MDC)

Main Page

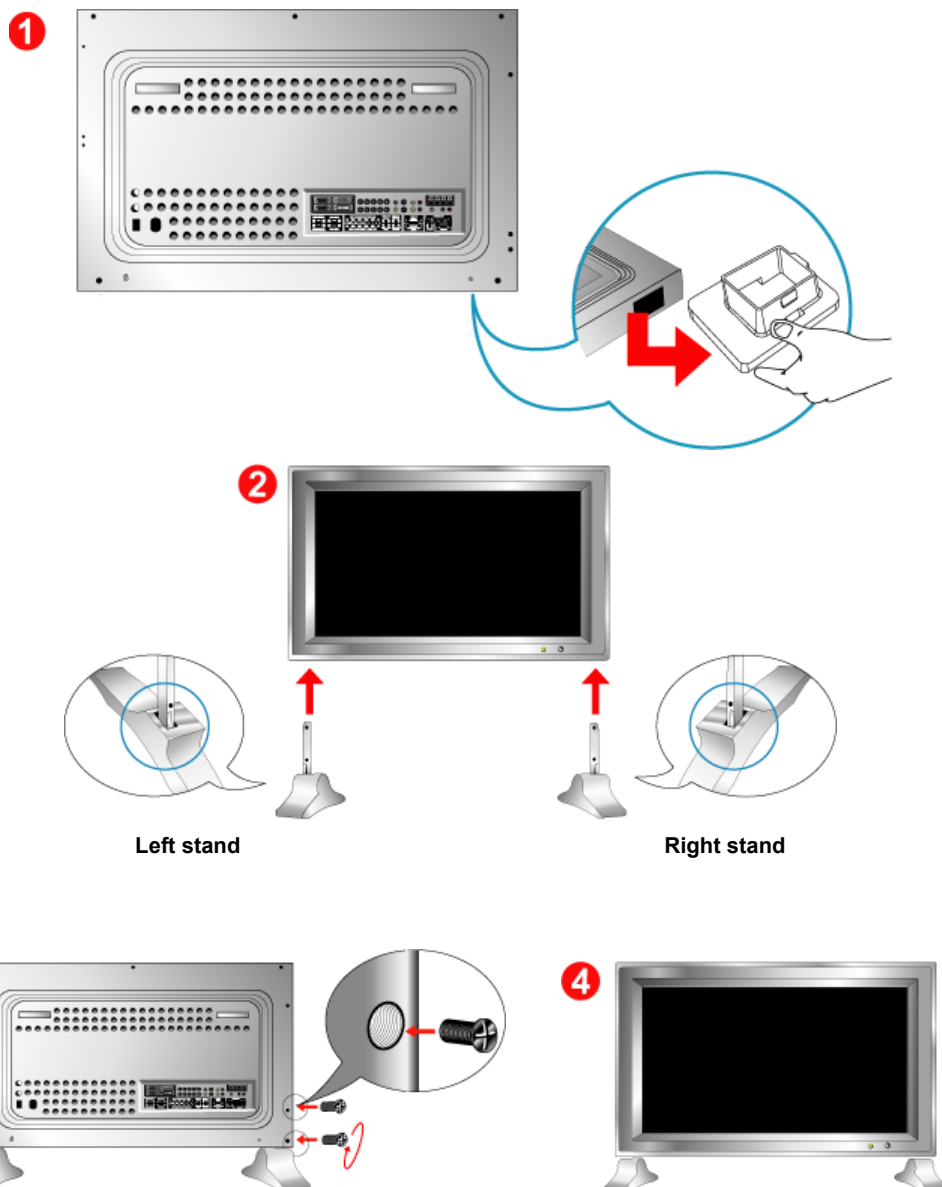


Only the supplied bolts should be used.



Samsung Electronics will not be responsible for damages caused by using a base other than those specified.

## 1. Installing the Basic Stand



1. A hole cover is used to protect the hole at the bottom of the monitor, where the stand is inserted. Be sure to remove the hole cover when attaching the provided basic stand or stand kit (sold separately) and re-cover it when attaching the wall mount kit.
2. Set up the left and right stands respectively.
3. Put the stand into the hole at the bottom of the monitor.
4. Insert screw into the hole indicated and tighten.

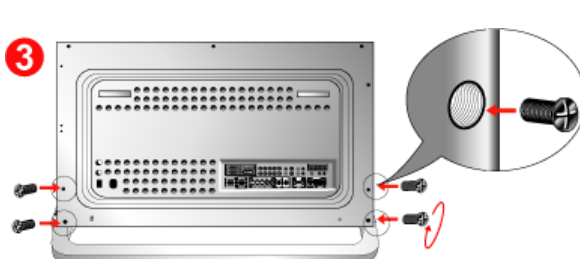
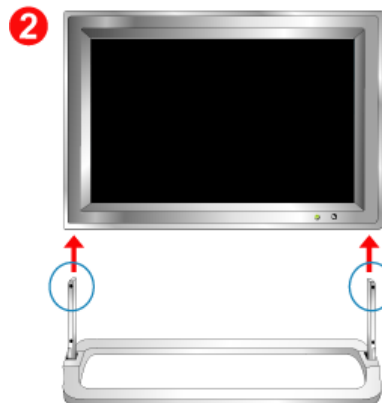
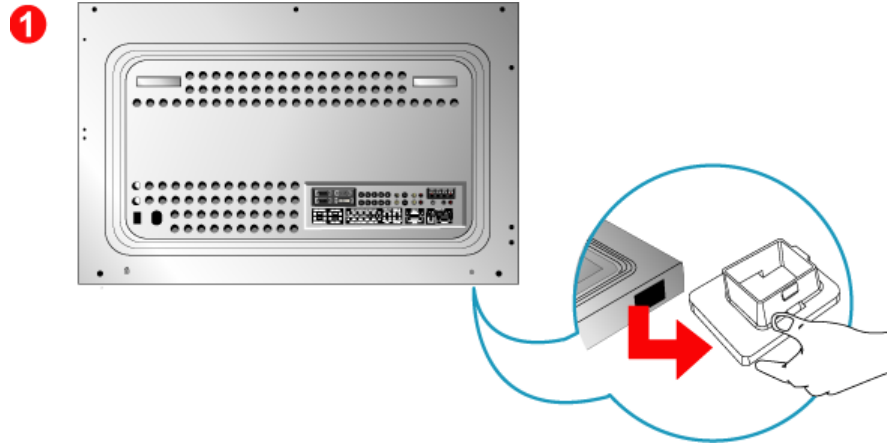


Setup

- ▶ Installing Stand Kit
- ▶ Connecting Your Monitor
- ▶ Multiple Display Control (MDC)

[Main Page](#)

## 2. Installing Stand Kit



1. A hole cover is used to protect the hole at the bottom of the monitor, where the stand is inserted. Be sure to remove the hole cover when attaching the provided basic stand or stand kit (sold separately) and re-cover it when attaching the wall mount kit.
2. Set up the left and right stands respectively.
3. Put the stand into the hole at the bottom of the monitor.
4. Insert screw into the hole indicated and tighten.



Setup

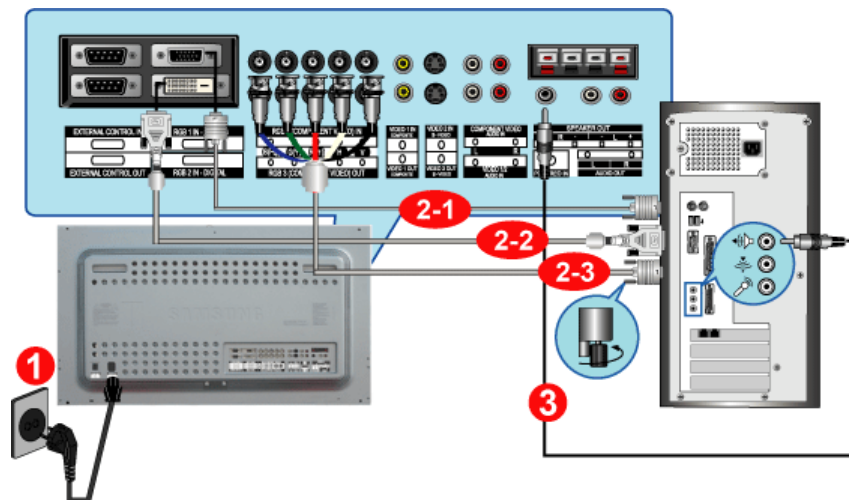
- ▶ Installing Stand Kit
- ▶ **Connecting Your Monitor**
- ▶ Multiple Display Control (MDC)

Main Page

AV input devices like DVDs, VCRs or Camcorders as well as your computer may be connected to the monitor. For detailed information on connecting AV input devices, refer to [User Controls](#) under Adjusting Your Monitor.

[Connecting to a Computer](#) | [Connecting to a VCR](#) | [Connecting to a DVD Player](#) | [Connecting a Camcorder](#)  
[Connecting D-TV Set Top Box](#) | [Connecting to an Audio System](#)

## 1. Connecting to a Computer



1. Connect the power cord for your monitor to the power port on the back of the monitor. Turn on power switch.

2. Connect the signal cable to the **PC Video Connection Terminal** on your computer.

There are 3 ways to connect the signal cable to your monitor.  
 Choose one of the followings :

- 2-1. Using the D-sub (Analog) connector on the video card.  
 Connect the signal cable to the **15 pin D-sub Port** on the back of your monitor.



- 2-2. Using the DVI (Digital) connector on the video card.  
 Connect the DVI Cable(DVI-D + DVI-D) to the **DVI Port** on the back of your Monitor.



- 2-3. Using the BNC (Analog) connector on the video card.  
 Connect the BNC Cable to the **RGB 3 (COMPONENT VIDEO) IN terminal - R, G, B, H, V port** on the back of your Monitor.



DVI cable or BNC cable is optional.

3. Connect the audio cable for your monitor to the audio port on the back of your computer.
4. Turn on both your computer and the monitor.

Contact a local Samsung Electronics [service center](#) to buy optional items.

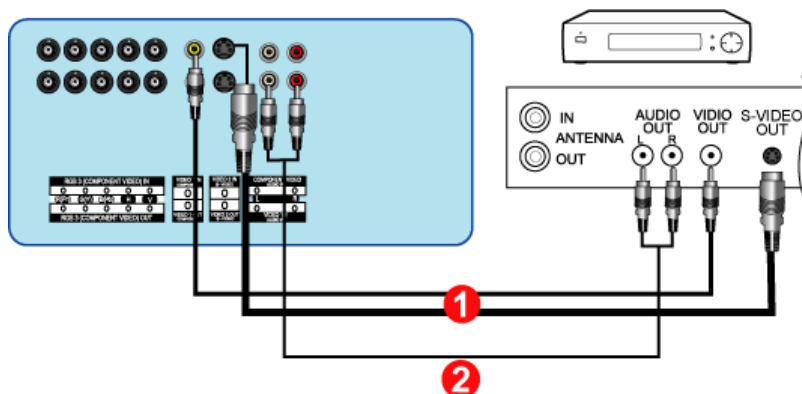




- ▶ Installing Stand Kit
- ▶ **Connecting Your Monitor**
- ▶ Multiple Display Control (MDC)

Main Page

## 2. Connecting to a VCR

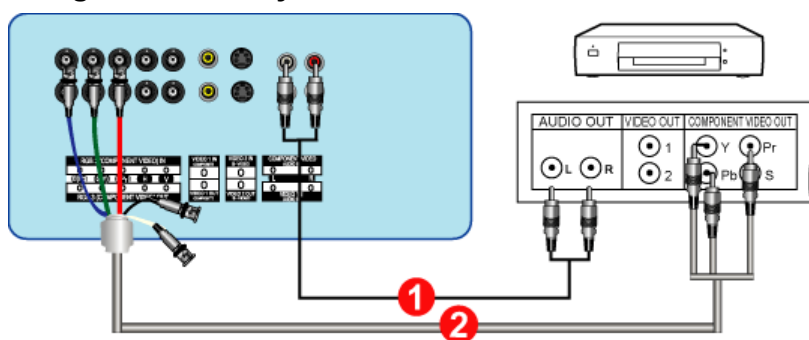


1. AV input devices like VCRs or Camcorders are connected to the **S-Video Connection Terminal** or **CVBS Video Connection Terminal** of the monitor using the S-VHS or RCA cable.

S-VHS or RCA cable is optional.

2. Connect the Audio (L) and Audio (R) terminals of a VCR or Camcorders to the monitor's **CVBS, S-Video Audio Connection Terminal** using audio cables.
3. Select **Video 1** or **Video 2** that is connected to a VCR or Camcorders using the Source button on the monitor's front or remote control.
4. Then, start the VCR or Camcorders with a tape inserted.

## 3. Connecting to a DVD Player



1. Connect a set of audio cables between the **Component Audio Connection Terminal** on the Monitor and the AUDIO OUT jacks on the DVD player.
2. Connect a BNC cable between the **RGB 3 (COMPONENT VIDEO) IN terminal - Y, Pb, Pr port** on the Monitor and the Y, Pb, Pr jacks on the DVD player.

BNC cable is optional.

3. Select **Component** that is connected to a DVD player using the Source button on the monitor's front or remote control.
4. Then, start the DVD Player with a DVD disc inserted.

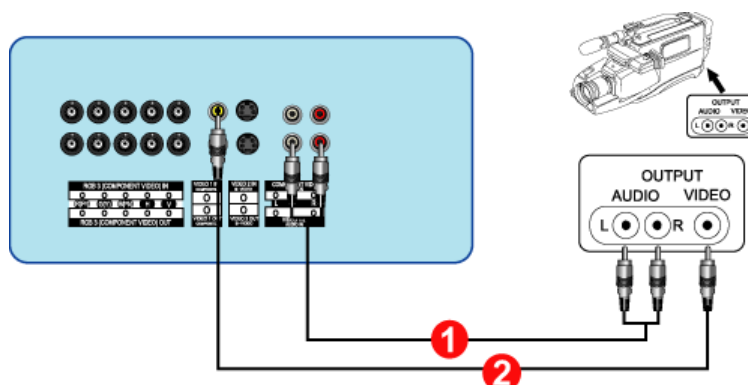
For an explanation of Component video, see your DVD player owner's manual.

## 4. Connecting a Camcorder



- ▶ Installing Stand Kit
- ▶ **Connecting Your Monitor**
- ▶ Multiple Display Control (MDC)

Main Page



1. Locate the A/V output jacks on the camcorder. They are usually found on the side or back of the camcorder.  
Connect a set of audio cables between the AUDIO OUTPUT jacks on the camcorder and the **CVBS, S-Video Audio Connection Terminal** on the Monitor.
2. Connect a video cable between the VIDEO OUTPUT jack on the camcorder and the **CVBS Video Connection Terminal** on the Monitor.
3. Then, start the Camcorders with a tape inserted.

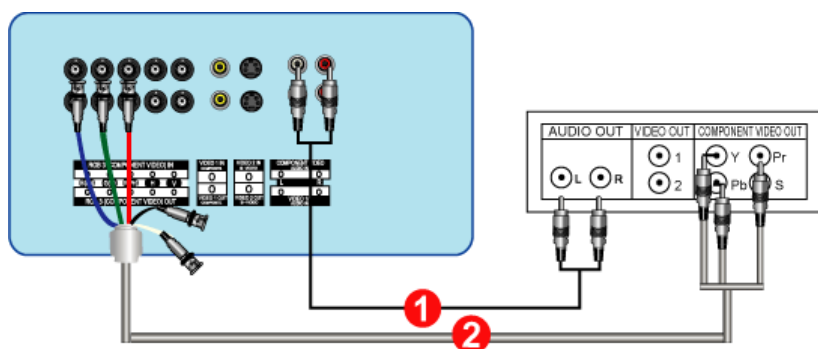


The audio-video cables shown here are usually included with a Camcorder. (If not, check your local electronics store.) If your camcorder is stereo, you need to connect a set of two cables.

## 5. Connecting D-TV Set Top Box



The connections for a typical Set Top Box are shown below.



1. Connect a set of audio cables between the **Component Audio Connection Terminal** on the Monitor and the AUDIO OUT jacks on the Set Top Box.
2. Connect a BNC cable between the **RGB 3 (COMPONENT VIDEO) IN terminal - Y, Pb, Pr** port on the Monitor and the Y, Pb, Pr jacks on the Set Top Box.



For an explanation of Component video, see your Set Top Box owner's manual.

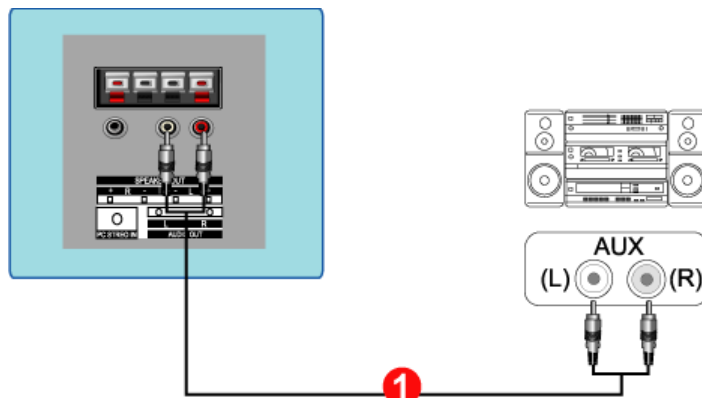
## 6. Connecting to an Audio System



#### Setup

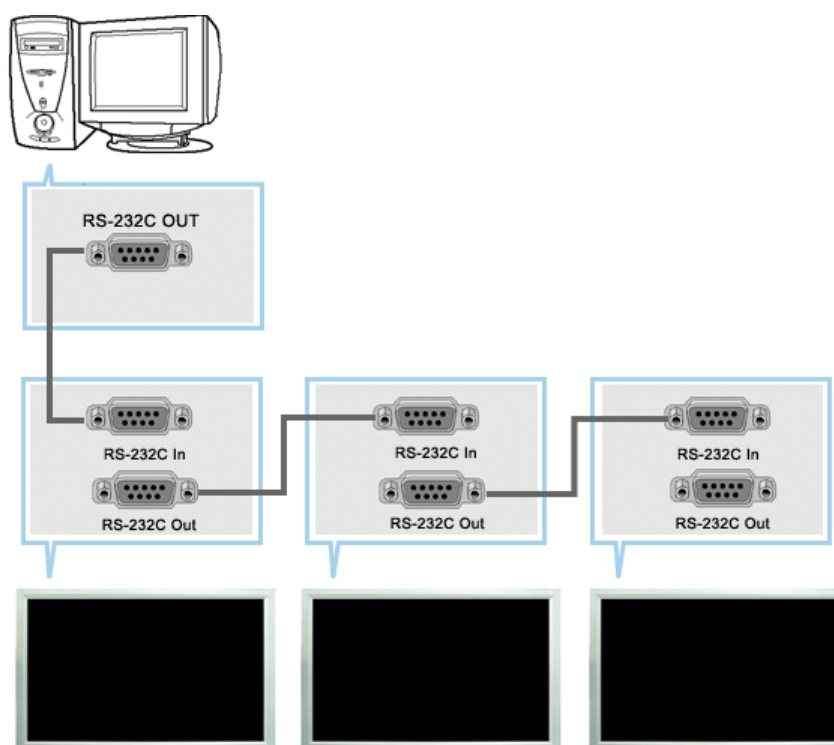
- ▶ Installing Stand Kit
- ▶ **Connecting Your Monitor**
- ▶ Multiple Display Control (MDC)

[Main Page](#)



1. Connect a set of audio cables between the AUX L, R jacks on the AUDIO SYSTEM and the **Audio Line-out Connection Terminal** on the Monitor.

## 1.Introduction



A Multiple Display Control (MDC) is an application allowing various displays to be easily and simultaneously operated on a PC. RS-232C, a standard of serial communication, is used for the communication between a PC and a display. Therefore, a serial cable should be connected between the serial port on a PC and the serial port on a display.

## 2. Install

1. PC Requirements (recommended) : Pentium II, 64M or greater RAM, 800 x 600, 256 color or higher PC display.
2. OS: Windows 95, Windows 98, Windows ME, Windows 2000, Windows XP and XP Professional
  - Minimum system requirement for MDC Program
    - Windows 98/ME/2000/XP : Support both English and Others version.



Setup

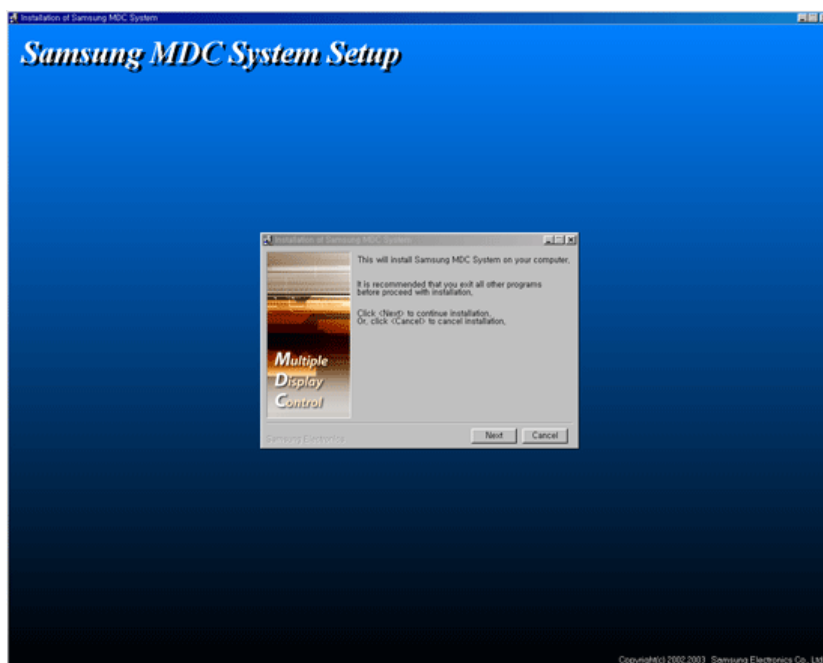
- ▶ Installing Stand Kit
- ▶ Connecting Your Monitor
- ▶ **Multiple Display Control (MDC)**

Main Page

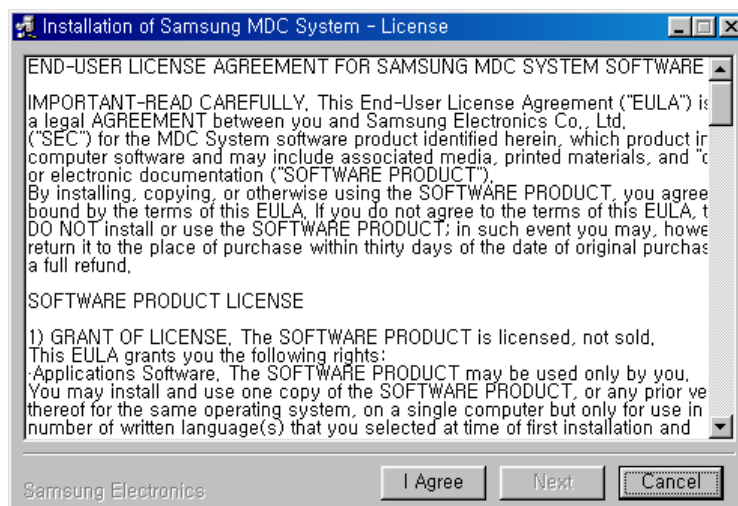
3. Click SETUP.EXE, and the following screen appears and the basic files for setup are copied.



The proper operation of this program is guaranteed only when it is used with Samsung SyncMaster 403T model and is not guaranteed when the user run this program with other models.



4. If you agree to the terms and conditions of the software, select the "I Agree" button. Then installation program starts to install packages.



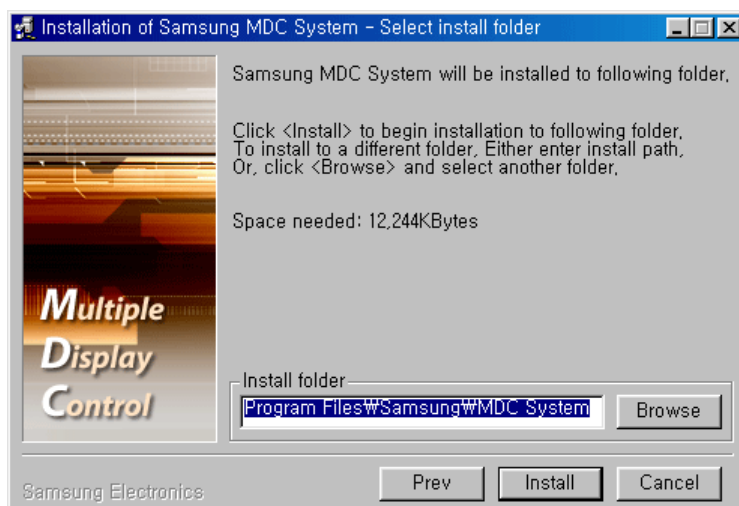


Setup

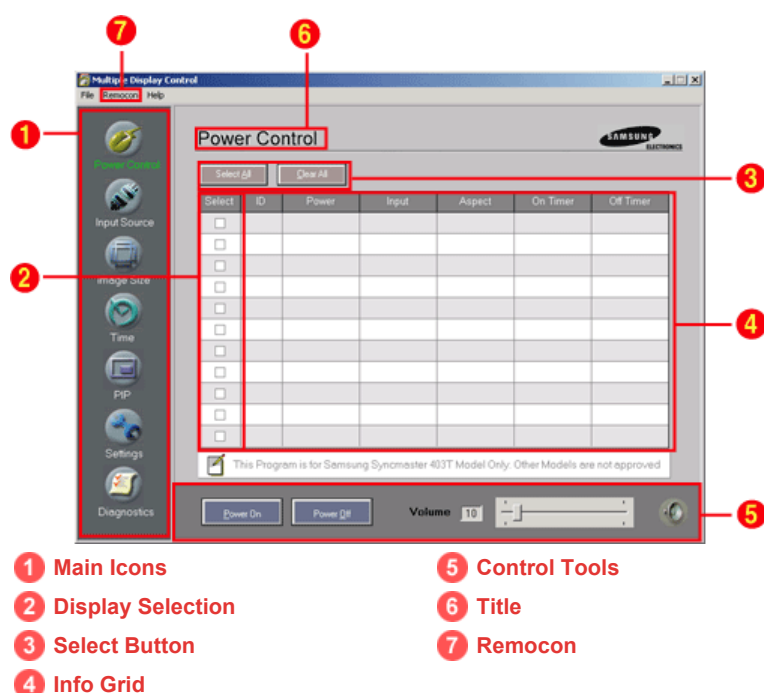
- ▶ Installing Stand Kit
- ▶ Connecting Your Monitor
- ▶ **Multiple Display Control (MDC)**

Main Page

5. Select the folder in which you want to install the program and then click Install button. Now installation is completed.



### 3. Beginning – Main Screen



1. Use the main icons to switch into each screen.
2. Select a display from Display Selection.
3. Click Select all or Clear to select or clear all displays.
4. Use Grid to view brief information on selected display.
5. Use Control Tools to control displays.
6. The current title to be controlled is displayed.
7. Allows you to enable or disable the remote control signal receiving function of the display unit.

**<Note>** The remote control Enable/Disable function operates whether or not the power is On/Off, and this applies to all displays connected to the displays connected to the MDC. However, regardless of the status at the time the MDC is shut down, the remote control signal receiving function of all displays is initialized to Enable when the MDC is closed.

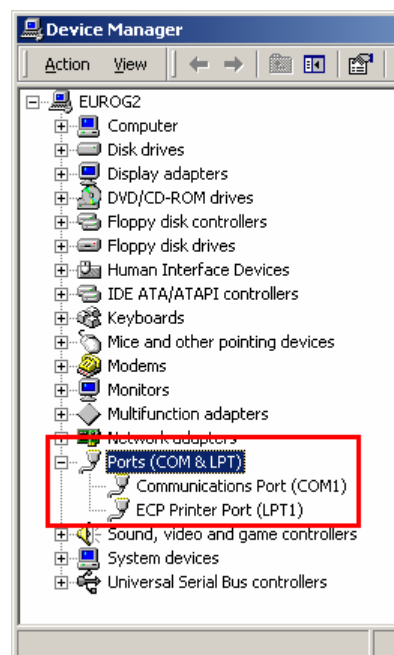


Setup

- ▶ Installing Stand Kit
- ▶ Connecting Your Monitor
- ▶ Multiple Display Control (MDC)

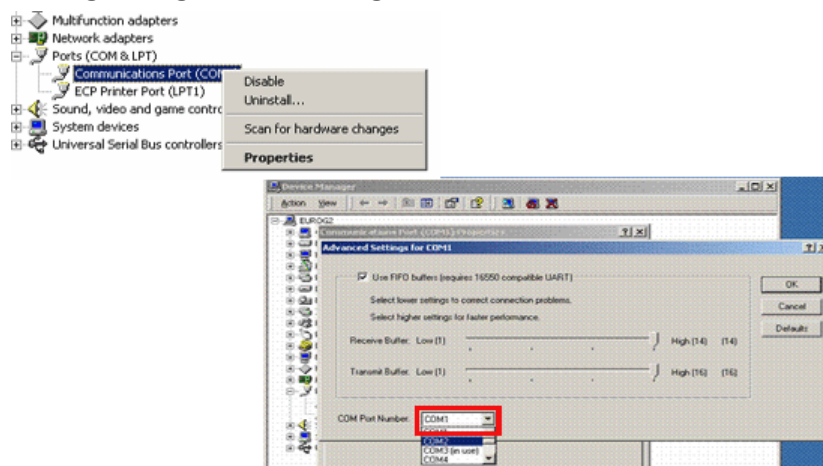
Main Page

### 3. Beginning – Port Setting



1. The Multiple Display Control uses only "Com1." The Control does not function with any other ports.
2. To check which port is installed, go to Control Panel > System > Hardware > Device Manager > Ports.
3. If the port installed is Com2, change to Com1 in Windows 2000 (See next chapter). For all the other operating systems, the change can be made from the BIOS Setup of your PC.
4. Use Exit to end the program. The Help menu shows how to use the program and general information about the program.

### 3. Beginning – Port Change



1. The Multiple Display Control uses only with Com1. It does not function with any other ports including Com2.
2. You can change the port to "Com1" in Windows 2000 as follows.
3. Go to Control Panel > System > Hardware > Device Manager > Ports > Right Mouse Click > Properties > Port Settings Tab > Advanced
4. Choose COM1



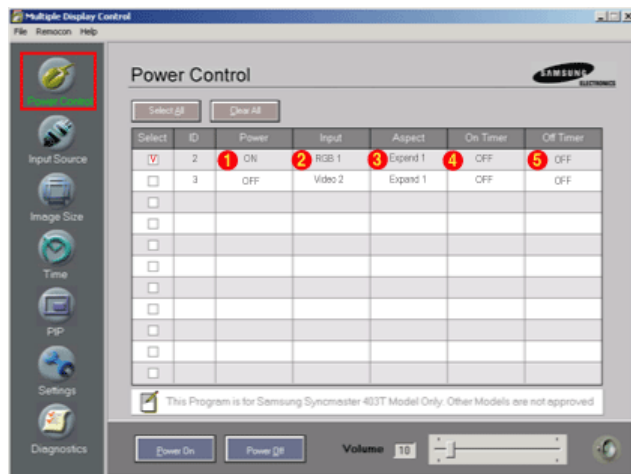
Setup

- ▶ Installing Stand Kit
- ▶ Connecting Your Monitor
- ▶ **Multiple Display Control (MDC)**

Main Page

## 4. Power Control

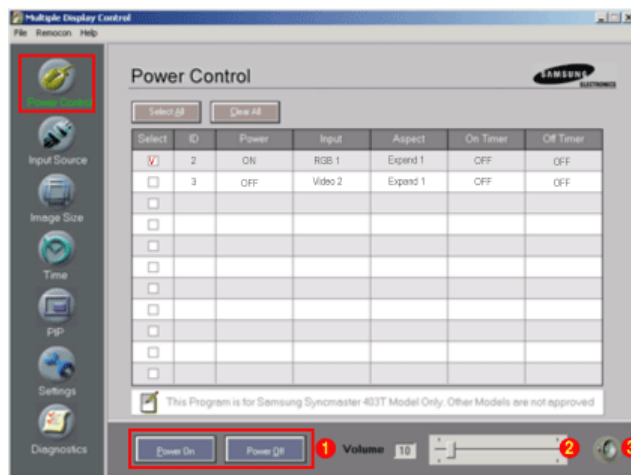
1. Click Power Control of the main icons and the Power Control screen appears.



- ▶ Info Grid shows some basic information necessary to Power Control.

- 1) Power Status
- 2) Input Source
- 3) Aspect Ratio
- 4) On Timer Status
- 5) Off Timer Status

2. Use the Select All button or Check Box to choose a display to control.



- ▶ ☒ Power Control allows controlling some of the functions of the selected display.

- 1) Power On/Off
  - Turns the power of the selected display On/Off.
- 2) Volume Control
  - Controls the volume level of the selected display. It receives the volume value of the selected display from the sets and displays it in the slider. (When you cancel the selection or choose Select All, the value returns to the default value 10)
- 3) Mute On/Off
  - Turns the mute of the selected display On/Off. When selecting one set at a time, if the selected set is already set to MUTE, you must mark the MUTE display. (If you choose undo the selections or choose Select All, the values return to default settings.)

- **Power Control applies to all displays.**

- **The Volume and Mute functions are available only for the displays for which the power status is ON.**





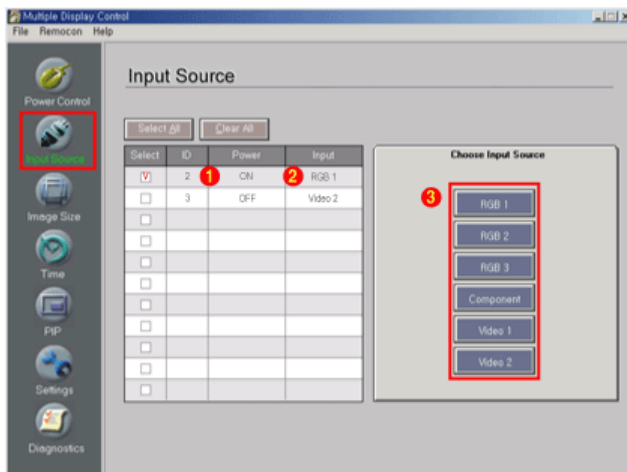
Setup

- ▶ Installing Stand Kit
- ▶ Connecting Your Monitor
- ▶ **Multiple Display Control (MDC)**

Main Page

## 5. Input Source Control

- Click Input Source of the main icons and the Input Source control screen appears. Click Select All or use Check Box to select a display to control.

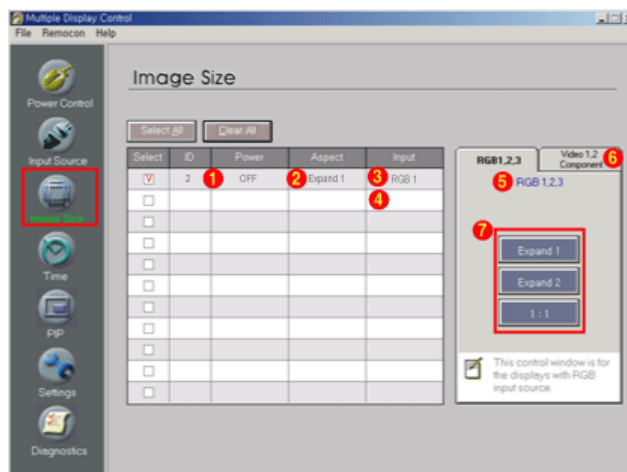


- ▶ Info Grid shows some basic information necessary to Input Source Control.

- Power Status
    - Shows the power status of the current display.
  - Input Source
    - Shows the Input Source currently in use.
  - Choose Input Source
    - Change Input Source of the selected display.
      - RGB 1 : Changes the Input Source of the selected display to RGB 1.
      - RGB 2 : Changes the Input Source of the selected display to RGB 2.
      - RGB 3 : Changes the Input Source of the selected display to RGB 3.
      - Component : Changes the Input Source of the selected display to Component.
      - Video 1 : Changes the Input Source of the selected display to Video 1.
      - Video 2 : Changes the Input Source of the selected display to Video 2.
- **Input Source Control applies only to the displays for which the POWER status is ON.**

## 6. Image Size Control - RGB 1, 2, 3

- Click Image Size of the main icons and the Image Size control screen appears. Click Select All or use Check Box to select a display to control.



- ▶ Info Grid shows some basic information necessary to Image Size Control.

- Power
  - Shows the power status of the current display.
- Aspect
  - Shows the current Aspect Ratio of the display in use.

Index | Safety Instructions | Introduction | **Setup** | Adjusting Your Monitor | Troubleshooting | Specifications | Information

**Setup**

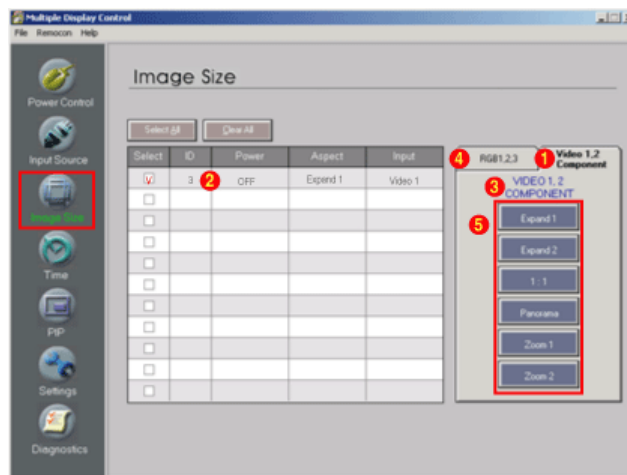
- ▶ Installing Stand Kit
- ▶ Connecting Your Monitor
- ▶ **Multiple Display Control (MDC)**

Main Page

- 3) Input Source
  - Shows the current Input Source of the display in use.
- 4) Info Grid displays only the displays whose Input Source is RGB 1, 2, 3.
- 5) When you click Image Size, the RGB 1, 2, 3 tabs first appear.
  - The Image Size Control button controls Image Size available for RGB 1, 2, 3.
- 6) Click the Video 1, 2, Component tab to control Image Size for respective Input Source.
- 7) Click to change Image Size of the selected display.
  - **Image Size Control is available only for the displays for which power status is ON.**

## 6. Image Size Control - Video 1, 2, Component

1. Click Image Size of the main icons and the Image Size control screen appears.



- ▶ Info Grid shows some basic information necessary to Image Size Control.
- 1) Click the Video 1, 2, Component tab to adjust Image Size for Video 1, 2, Component. Click Select All or use Check Box to select a display to control.
  - 2) Info Grid displays only the display having Video 1, 2, Component as input source.
  - 3) Adjust Image Size of the selected display one by one.
  - 4) You can also adjust Image Size for RGB 1, 2, 3 if you click on the RGB 1, 2, 3 tab.
  - 5) Click to change Image Size of the selected display.
    - **Image Size Control is available only for the displays for which power status is ON.**