


# Using USB memory device

- 3 Select the folder or file you want and press **OK**.  
If you see [+] or [D] in the front of a folder name, there are one or more files or folders in the selected folder.
- 4 Select the number of copies to be printed or enter the number.
- 5 Press **OK**, **Start** or **Print** to start printing the selected file.  
After printing the file, the display asks if you want to print another job.
- 6 Press **OK** when **Yes** appears to print another job, and repeat from step 2.  
Otherwise, press the left/right arrow to select **No** and press **OK**.
- 7 Press  (**Stop/Clear**) to return to ready mode.

## Managing USB memory

You can delete image files stored on a USB memory device one by one or all at once by reformatting the device.




If you see [+] or [D] in the front of a folder name, there are one or more files or folders in the selected folder.



After deleting files or reformatting a USB memory device, files cannot be restored. Therefore, confirm that you no longer need the data before deleting it.

## Deleting an image file

- 1 Insert a USB memory device into the USB memory port on your machine, and then press **Direct USB**.
- 2 Select **File Manage** > **Delete** and press **OK**.
- 3 Select the file you want to delete and press **OK**.
- 4 Select **Yes**.
- 5 Press  (**Stop/Clear**) to return to ready mode.

## Formatting a USB memory device

- 1 Insert a USB memory device into the USB memory port on your machine, and then press **Direct USB**.
- 2 Select **File Manage** > **Format** and press **OK**.
- 3 Select **Yes**.


# Using USB memory device

- 4 Press  (**Stop/Clear**) to return to ready mode.

## Viewing the USB memory status

---

You can check the amount of memory space available for scanning and saving documents.

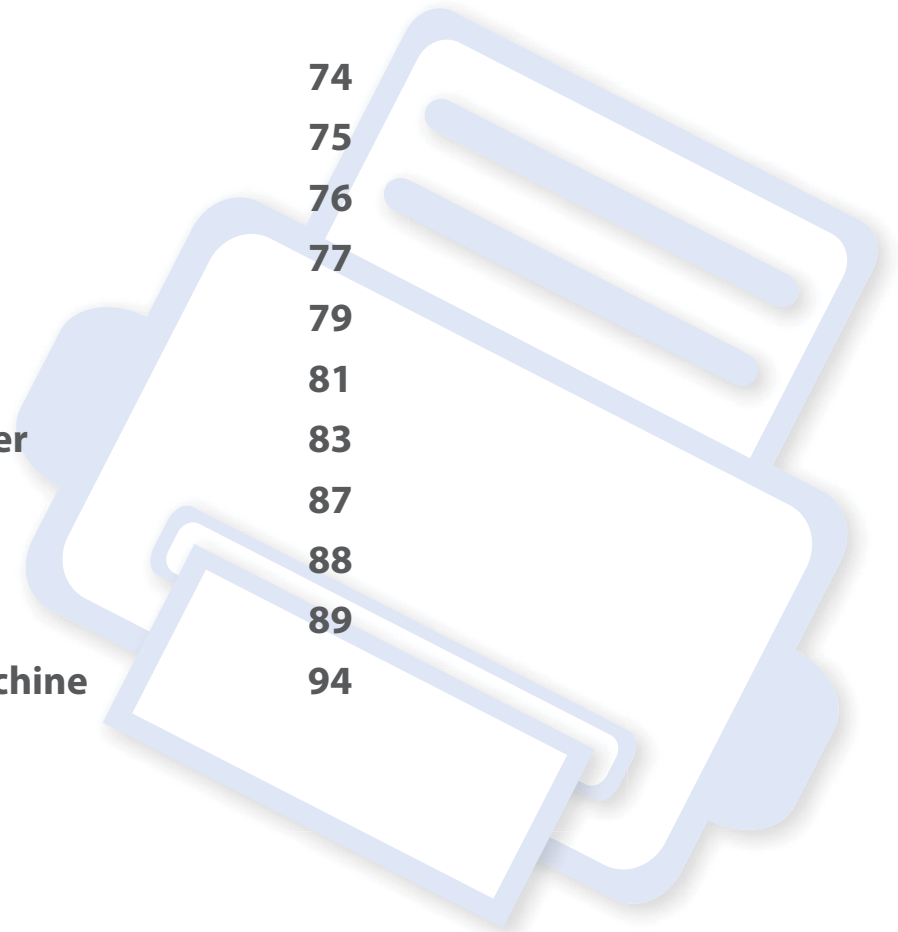
- 1 Insert a USB memory device into the USB memory port on your machine, and then press **Direct USB**.
- 2 Select **Check Space**.
- 3 The available memory space appears on the display.
- 4 Press  (**Stop/Clear**) to return to ready mode.



## 3. Maintenance

This chapter provides information about purchasing supplies, accessories and maintenance parts available for your machine.

- **Ordering supplies and accessories** 74
- **Available supplies** 75
- **Available maintenance parts** 76
- **Storing the toner cartridge** 77
- **Redistributing toner** 79
- **Replacing the toner cartridge** 81
- **Replacing the waste toner container** 83
- **Monitoring the supplies life** 87
- **Setting the toner low alert** 88
- **Cleaning the machine** 89
- **Tips for moving & storing your machine** 94



# Ordering supplies and accessories



Available accessories may differ from country to country. Contact your sales representatives to obtain the list of available supplies, and maintenance parts.

To order Samsung-authorized supplies, accessories, and maintenance parts, contact your local Samsung dealer or the retailer where you purchased your machine. You can also visit **[www.samsung.com/supplies](http://www.samsung.com/supplies)**, and then select your country/region to obtain the contact information for service.

# Available supplies

When supplies reach the end of their life spans, you can order the followings of supplies for your machine:

Type	Average yield <sup>a</sup>	Part name
<b>Toner cartridge</b>	<ul style="list-style-type: none"><li>Average continuous black cartridge yield: Approx. 1,500 standard pages (Black)</li><li>Average continuous color cartridge yield: Approx. 1,000 standard pages (Yellow/Magenta/Cyan)</li></ul>	<ul style="list-style-type: none"><li>K406 (CLT-K406S): Black</li><li>C406 (CLT-C406S): Cyan</li><li>M406 (CLT-M406S): Magenta</li><li>Y406 (CLT-Y406S): Yellow</li></ul>
<b>Imaging unit</b>	Approx. 16,000 images <sup>b</sup>	CLT-R406
<b>Waste toner container</b>	Approx. 7,000 images <sup>b</sup>	CLT-W406

a. Declared yield value in accordance with ISO/IEC 19798. The number of pages may be affected by operating environment, printing interval, graphics, media type and media size.

b. Image counts based on one color on each page. If you print documents in full color (Cyan, Magenta, Yellow, Black), the life of this item will be reduced by 25%.



Depending on the options, percentage of image area and job mode used, the toner cartridge's lifespan may differ.



When purchasing new toner cartridges or other supplies, these must be purchased in the same country as the machine you are using. Otherwise, new toner cartridges or other supplies will be incompatible with your machine due to different configurations of toner cartridges and other supplies according to the specific country conditions.



Samsung does not recommend using non-genuine Samsung toner cartridge such as refilled or remanufactured toner. Samsung cannot guarantee non-genuine Samsung toner cartridge's quality. Service or repair required as a result of using non-genuine Samsung toner cartridges will not be covered under the machine's warranty.

# Available maintenance parts

To purchase maintenance parts, contact the source where you bought the machine. Replacing maintenance parts can be performed only by an authorized service provider, dealer, or the retailer where you bought the machine. The warranty does not cover the replacement of any maintenance parts once it has reached its “Average yield”.

Maintenance parts are replaced at specific intervals to avoid print quality and paper feed problems resulting from worn parts, see table below. The purpose of which is to maintain your machine in top working condition. The maintenance parts below should be replaced when the life span of each item has been met.

Parts	Average yield <sup>a</sup>
<b>Fuser unit</b>	Approx. 20,000 black pages or 5,000 color pages
<b>Transfer roller</b>	Approx. 20,000 pages
<b>Feed roller</b>	Approx. 20,000 pages
<b>Pickup roller</b>	Approx. 20,000 pages
<b>Intermediate Transfer Belt (ITB)</b>	Approx. 20,000 pages for black and white mode or 5,000 pages for color mode
<b>ADF Feed roller<sup>b</sup></b>	Approx. 20,000 pages
<b>ADF Rubber Pad<sup>b</sup></b>	Approx. 20,000 pages

a. It will be affected by the operating system used, computing performance, application software, connecting method, media type, media size and job complexity.

b. CLX-330xFN Series/ CLX-330xFW Series only

# Storing the toner cartridge

Toner cartridges contain components that are sensitive to light, temperature and humidity. Samsung suggests users follow these recommendations to ensure optimal performance, highest quality, and longest life from your new Samsung toner cartridge.

Store this cartridge in the same environment in which the printer will be used. This should be in controlled temperature and humidity conditions. The toner cartridge should remain in its original and unopened package until installation – if original packaging is not available, cover the top opening of the cartridge with paper and store in a dark cabinet.

Opening the cartridge package prior to use dramatically shortens its useful shelf and operating life. Do not store on the floor. If the toner cartridge is removed from the printer, follow the instructions below to store the toner cartridge properly.

- Store the cartridge inside the protective bag from the original package.
- Store lying flat (not standing on end) with the same side facing up as if it were installed in the machine.
- Do not store consumables in any of the following conditions:
  - Temperature greater than 40°C (104°F).
  - Humidity range less than 20% or greater than 80%.
  - An environment with extreme changes in humidity or temperature.
  - Direct sunlight or room light.
  - Dusty places.
  - A car for a long period of time.
  - An environment where corrosive gases are present.

- An environment with salty air.

## Handling instructions

- Do not expose the cartridge to unnecessary vibrations or shock.

## Toner cartridge usage

Samsung Electronics does not recommend or approve the use of non-Samsung brand toner cartridges in your printer including generic, store brand, refilled, or remanufactured toner cartridges.



Samsung's printer warranty does not cover damage to the machine caused by the use of a refilled, remanufactured, or non-Samsung brand toner cartridges.

# Storing the toner cartridge

## Estimated cartridge life

Estimated cartridge life (the life of the toner cartridge yield) depends on the amount of toner that print jobs require. The actual print yield may vary depending on the print density of the pages you print on, operating environment, percentage of image area, printing interval, media type and/or media size. For example, if you print a lot of graphics, the consumption of the toner is higher and you may need to change the cartridge more often.



# Redistributing toner

When the toner cartridge is near the end of its life:

- White streaks or light printing occurs and/or density variation side to side.
- The **Status** LED blinks red. The toner-related message saying that the toner is low may appear on the display.
- The computer's Samsung Printing Status program window appears on the computer telling you which color cartridge is low on toner (see "Using Samsung Printer Status" on page 269).

If this happens, you can temporarily improve print quality by redistributing the remaining toner in the cartridge. In some cases, white streaks or light printing will still occur even after you have redistributed the toner.

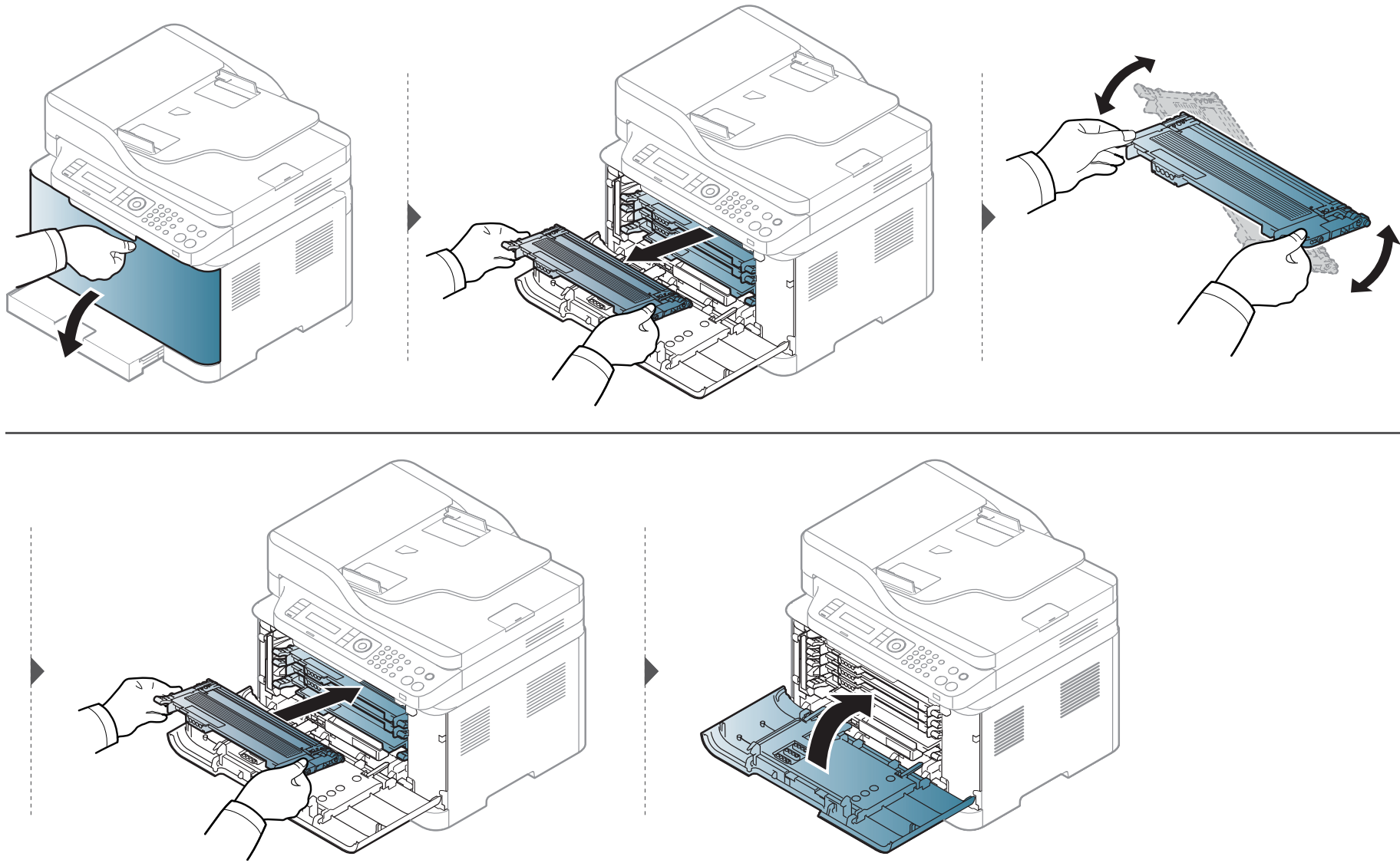


Illustrations on this user's guide may differ from your machine depending on its options or models. Check your machine type (see "Front view" on page 20).



- Do not use sharp objects such as a knife or scissors to open the toner cartridge package. They might scratch the drum of the cartridge.
- If toner gets on your clothing, wipe it off with a dry cloth and wash clothing in cold water. Hot water sets toner into fabric.
- When opening a scan unit, hold the document feeder and scan unit together.

# Redistributing toner



# Replacing the toner cartridge



Click this link to open an animation about replacing a toner cartridge.



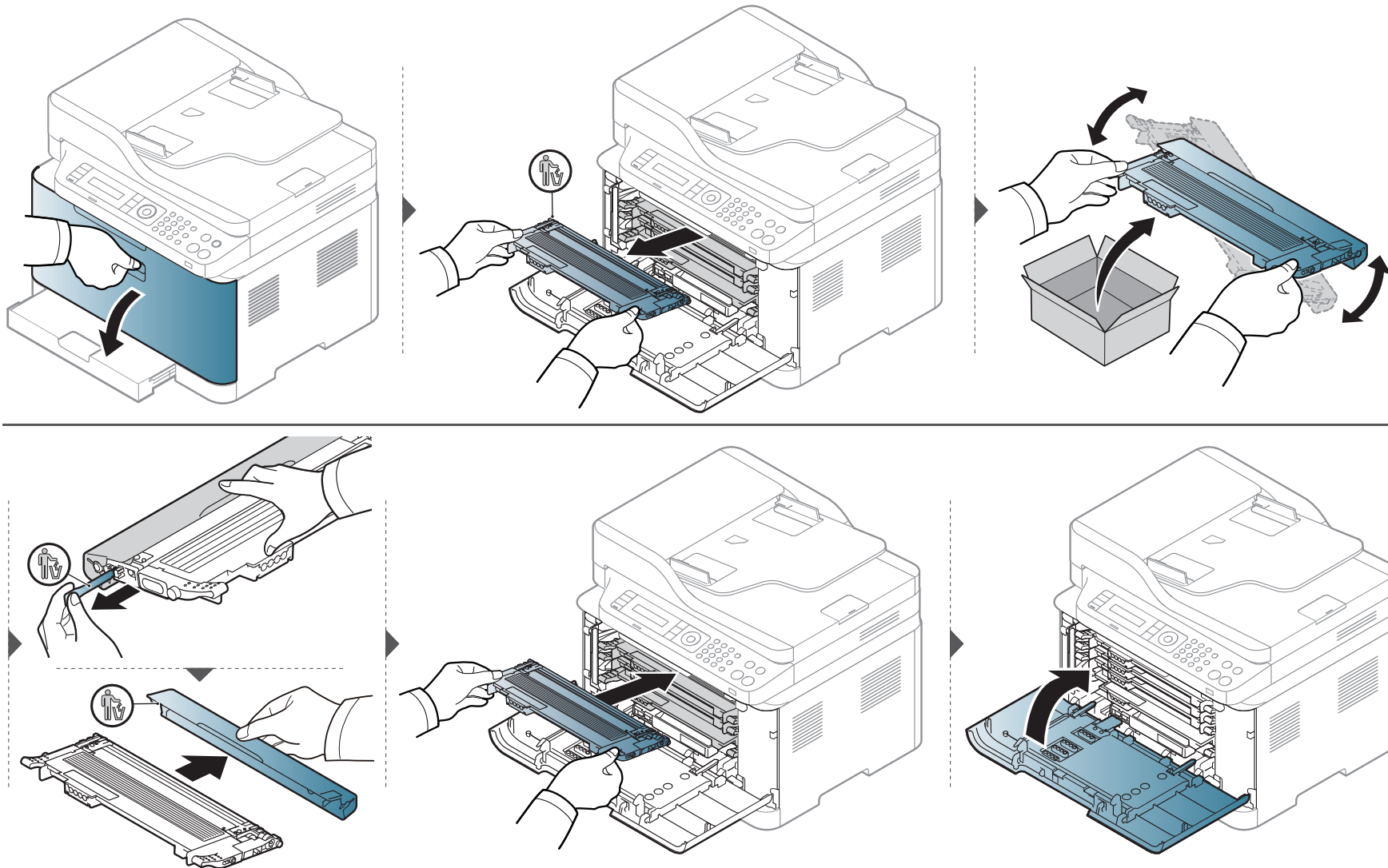
- Shake the toner cartridge thoroughly, it will increase the initial print quality.
- Illustrations on this user's guide may differ from your machine depending on its options or models. Check your machine type (see "Front view" on page 20).



- Do not use sharp objects such as a knife or scissors to open the toner cartridge package. They might scratch the drum of the cartridge.
- If toner gets on your clothing, wipe it off with a dry cloth and wash clothing in cold water. Hot water sets toner into fabric.
- When opening a scan unit, hold the document feeder and scan unit together.

When a toner cartridge has reached the end of life, the Printing Status window appears on the computer, indicating the toner cartridge needs to be placed.

# Replacing the toner cartridge



# Replacing the waste toner container

When the life span of the waste toner container has expired, waste toner container-related message appears on the screen display of the control panel, indicating the waste toner container needs to be replaced. Check the waste toner container for your machine (see "Available supplies" on page 75). For information about installing the waste toner container, refer to the waste toner container installation guide included on the package.

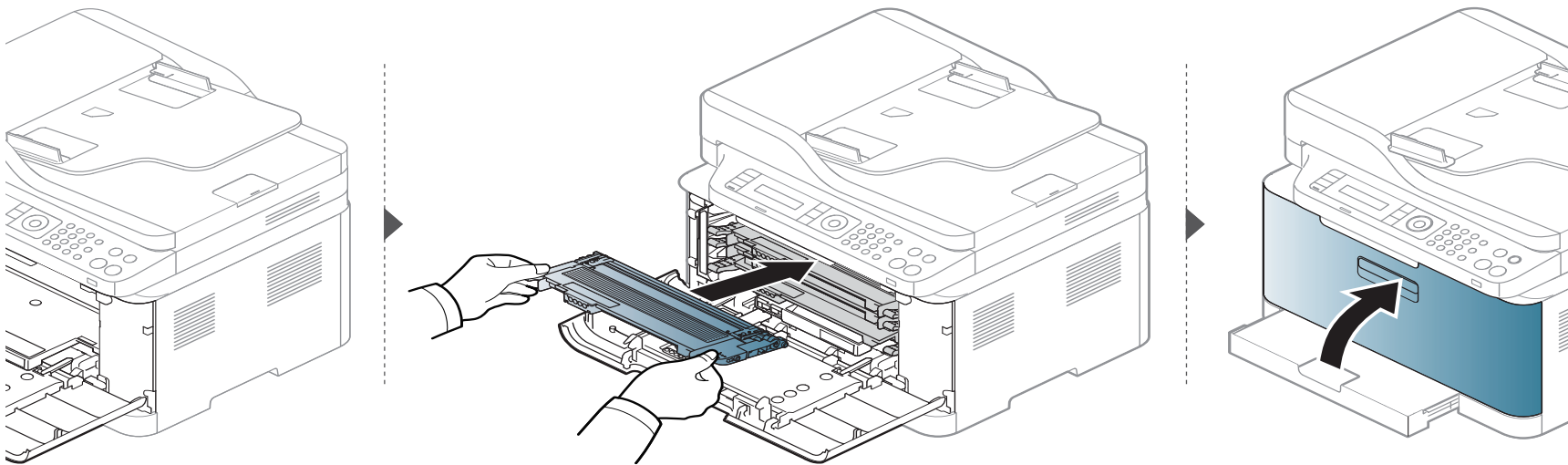
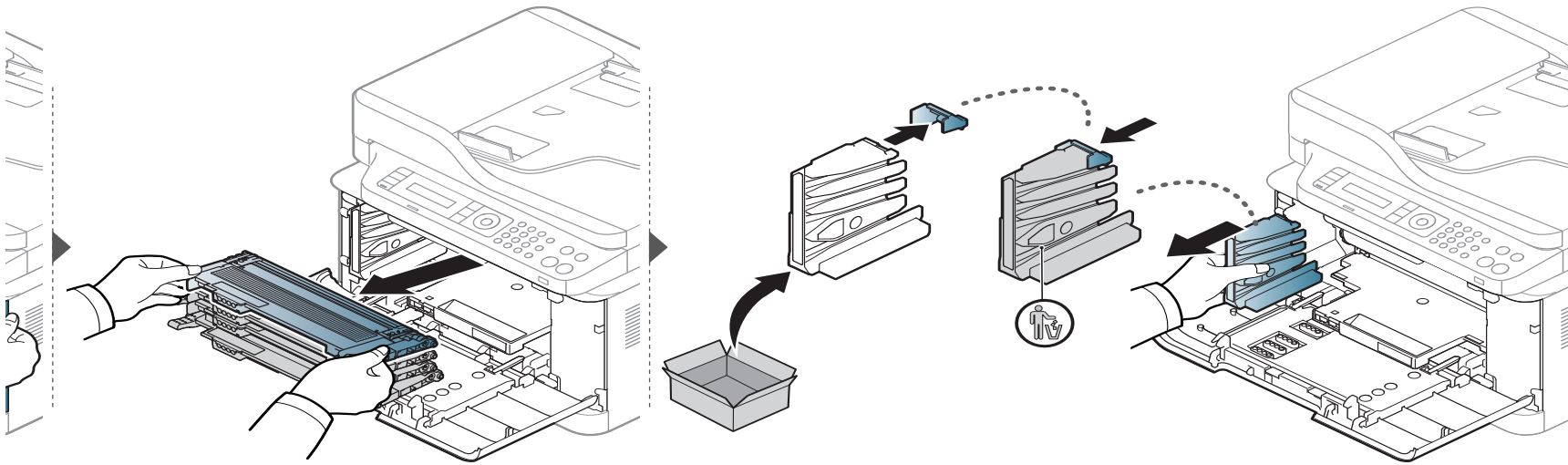


- Toner particles can be released inside the machine but it does not mean the machine is damaged. Contact a service representative when print quality problems occur.
- When you pull out the waste toner container out of the machine, move the container carefully not to drop it from your hands.
- Make sure that you lay the waste toner container on a flat surface so that the toner does not spill.



Do not tilt or turn over the container.

# Replacing the waste toner container



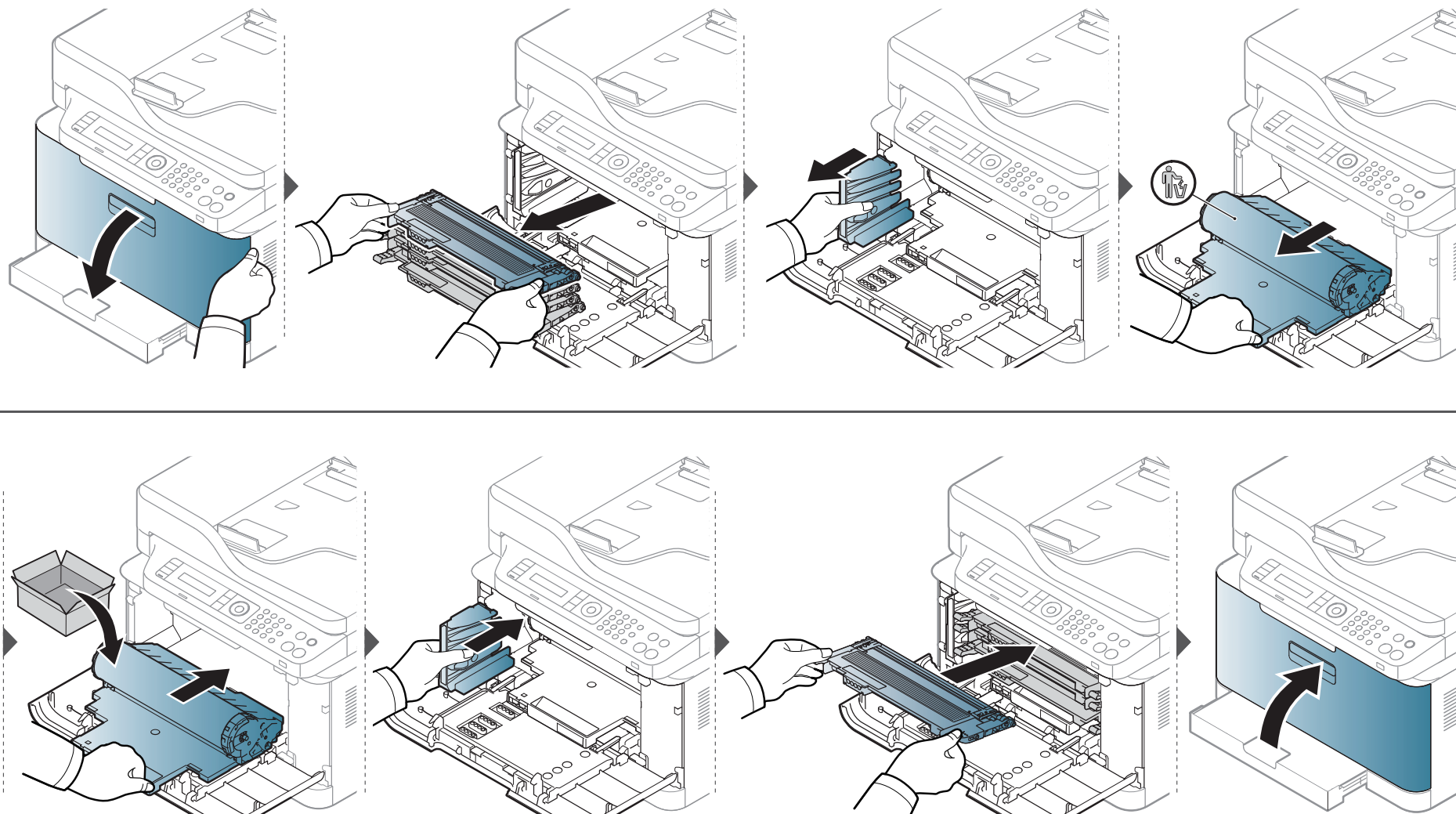
# Replacing the imaging unit

When the life span of the imaging unit has expired, the Printing Status window appears on the computer, indicating the imaging unit needs to be placed. Otherwise, your machine stops printing.



- Don't use sharp objects such as a knife or scissors to open the imaging unit package. You could damage the surface of the imaging unit.
- Be careful not to scratch the surface of the imaging unit.
- To prevent damage, do not expose the imaging unit to light for more than a few minutes. Cover it with a piece of paper to protect it if necessary.
- Before closing the front cover, make sure all toner cartridges are installed properly.

# Replacing the imaging unit







# Monitoring the supplies life

If you experience frequent paper jams or printing problems, check the number of pages the machine has printed or scanned. Replace the corresponding parts, if necessary.

 It may be necessary to press **OK** to navigate to lower-level menus for some models.

- 1 Select  (**Menu**) > **System Setup** > **Maintenance** > **Supplies Life** on the control panel.
- 2 Select the option you want and press **OK**.
  - **Total:** Displays the total number of pages printed.
  - **ADF Scan:** Displays the number of pages printed by using the document feeder.
  - **Platen Scan:** Displays the number of pages scanned by using scanner glass.
  - **Supplies Info.:** Prints the supply information page.
- 3 Press  (**Stop/Clear**) to return to ready mode.

# Setting the toner low alert

If the amount of toner in the cartridge is low, a message or LED informing the user to change the toner cartridge appears. You can set the option for whether or not this message or LED appears.



- You can set the machine's settings by using the **Device Settings** in Samsung Easy Printer Manager program.
  - For Windows and Macintosh users, you set from **Samsung Easy Printer Manager** > **(Switch to advanced mode)** > **Device Settings**, see "Device Settings" on page 263.
- It may be necessary to press **OK** to navigate to lower-level menus for some models.

1

Select **(Menu)** > **System Setup** > **Maintenance** > **TonerLow Alert** on the control panel.

2

Select the option you want.

3

Press **OK** to save the selection.

# Cleaning the machine

If printing quality problems occur or if you use your machine in a dusty environment, you need to clean your machine regularly to keep it in the best printing condition and use your machine longer.



- Cleaning the cabinet of the machine with cleaning materials containing large amounts of alcohol, solvents, or other strong substances can discolor or distort the cabinet.
- If your machine or the surrounding area is contaminated with toner, we recommend you use a cloth or tissue dampened with water to clean it. If you use a vacuum cleaner, toner blows in the air and might be harmful to you.

## Cleaning the outside

Clean the machine cabinet with a soft, lint-free cloth. Dampen the cloth slightly with water, but be careful not to let any water drip onto or into the machine.

# Cleaning the machine

## Cleaning the inside

During the printing process, paper, toner, and dust particles can accumulate inside the machine. This buildup can cause print quality problems, such as toner specks or smearing. Cleaning the inside of the machine clears and reduces these problems.

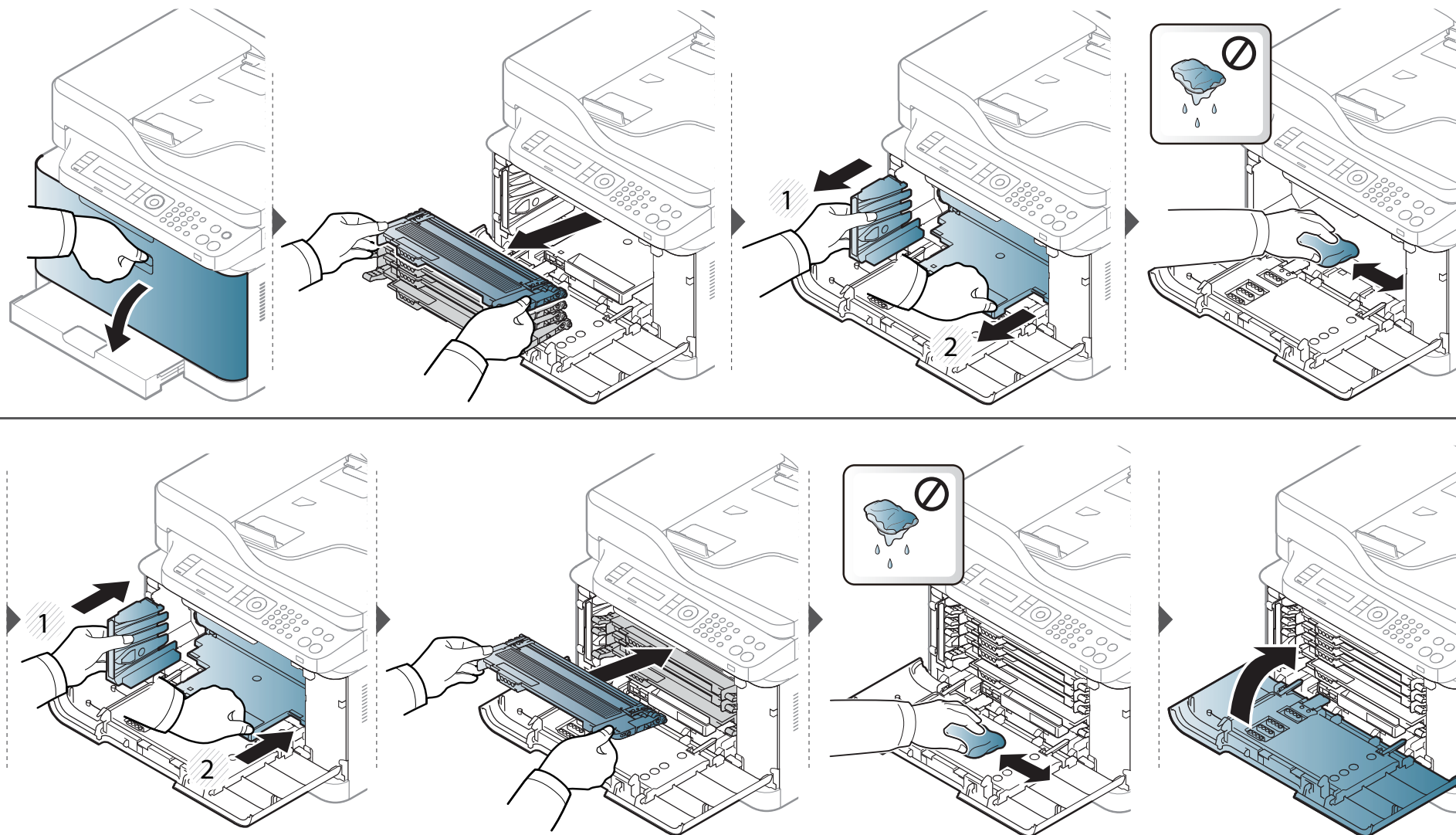


- To prevent damage to the imaging unit, do not expose it to light for more than a few minutes. Cover it with a piece of paper, if necessary.
- Do not touch the green area of the imaging unit. Use the handle on the imaging unit to avoid touching this area.
- Use a dry lint free cloth when cleaning the inside of the machine, be careful not to damage the transfer roller or any other inside parts. Do not use solvents such as benzene or thinner. Printing quality problems can occur and cause damage to the machine.



- Use a dry lint-free cloth to clean the machine.
- Turn the machine off and unplug the power cord. Wait for the machine to cool down. If your machine has a power switch, turn the power switch off before cleaning the machine.
- Illustrations on this user's guide may differ from your machine depending on its options or models. Check your machine type (see "Front view" on page 20).
- When opening a scan unit, hold the document feeder and scan unit together.

# Cleaning the machine



# Cleaning the machine

## Cleaning the scan unit

Keeping the scan unit clean helps ensure the best possible copies. We suggest that you clean the scan unit at the start of each day and during the day as needed.

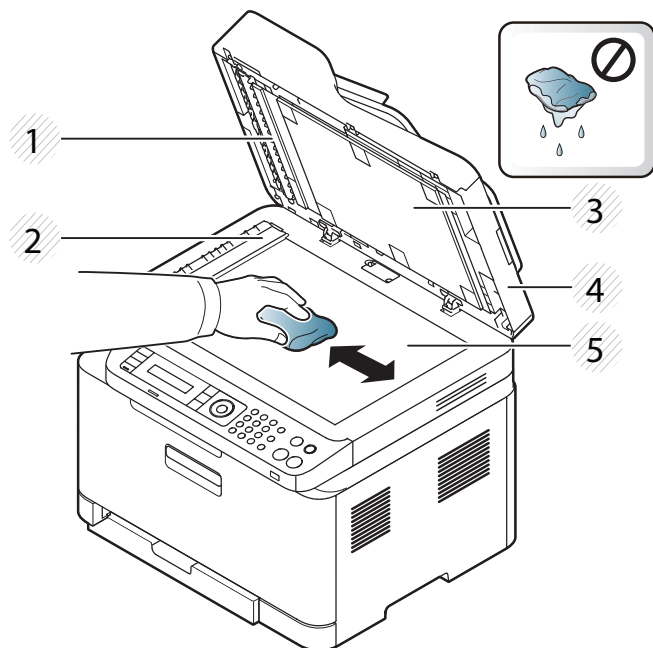


- Turn the machine off and unplug the power cord. Wait for the machine to cool down. If your machine has a power switch, turn the power switch off before cleaning the machine.
- Illustrations on this user's guide may differ from your machine depending on its options or models. Check your machine type (see "Front view" on page 20).

- 1 Slightly dampen a soft, lint-free cloth or paper towel with water.
- 2 Lift and open the scanner lid.

# Cleaning the machine

- 3** Wipe the surface of the scanner until it is clean and dry.



- 1 White bar
- 2 Document feeder glass
- 3 White sheet
- 4 Scanner lid
- 5 Scanner glass

- 4** Close the scanner lid.

# Tips for moving & storing your machine

- When moving the machine, do not tilt or turn it upside down. Otherwise, the inside of the machine may be contaminated by toner, which can cause damage to the machine or reduce print quality.
- When moving the machine, make sure at least two people are holding the machine securely.





## 4. Troubleshooting

This chapter gives helpful information for what to do if you encounter an error.

- **Tips for avoiding paper jams** 96
- **Clearing original document jams** 97
- **Clearing paper jams** 102
- **Understanding the status LED** 106
- **Understanding display messages** 108



This chapter gives helpful information for what to do if you encounter an error. If your machine has a display screen, check the message on the display screen first to solve the error.

If you cannot find a solution to your problem in this chapter, refer to the **Troubleshooting** chapter in the Advanced Guide (see "Troubleshooting" on page 275).

If you cannot find a solution in the User's Guide or the problem persists, call for service.


# Tips for avoiding paper jams


By selecting the correct media s, most paper jams can be avoided. To avoid paper jams, refer to the following guidelines:

- Ensure that the adjustable guides are positioned correctly (see "Tray overview" on page 41).
- Do not remove paper from the tray while your machine is printing.
- Flex, fan, and straighten paper before loading.
- Do not use creased, damp, or highly curled paper.
- Do not mix papers in a tray.
- Use only recommended print media (see "Print media specifications" on page 117).

# Clearing original document jams

When an original document jams in the document feeder, a warning message appears on the display.

 To avoid tearing the document, remove the jammed document slowly and carefully.

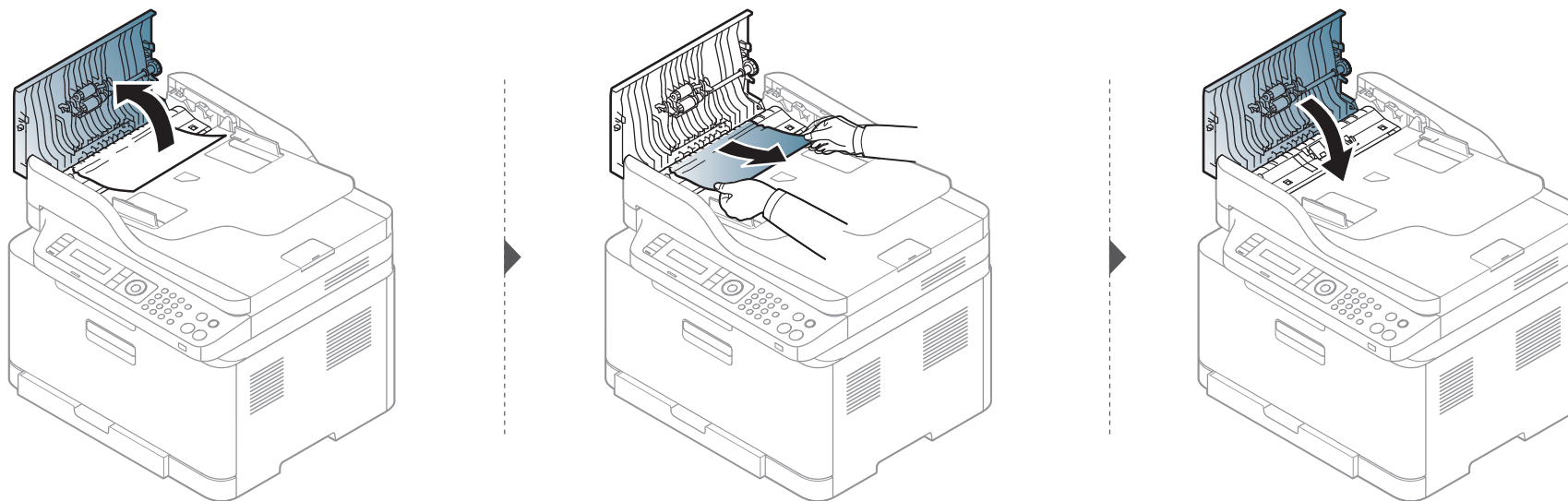
 To prevent document jams, use the scanner glass for thick, thin or mixed paper- originals.

# Clearing original document jams

## Original paper jam in front of scanner



- Illustrations on this user's guide may differ from your machine depending on its options or models. Check your machine type (see "Front view" on page 20).
- This troubleshooting may not be available depending on model or optional goods (see "Variety feature" on page 9).



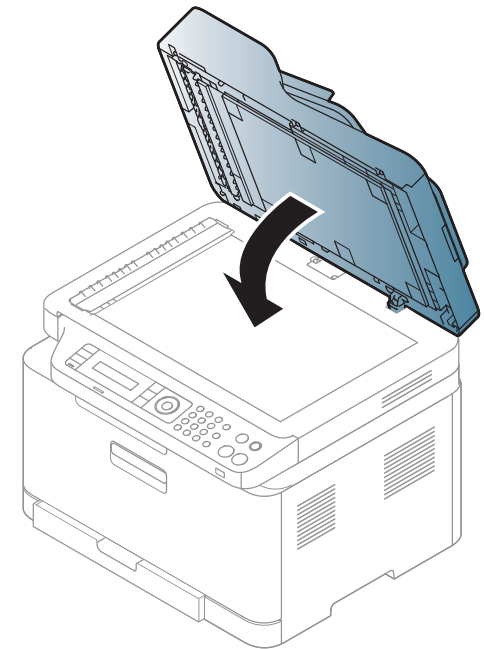
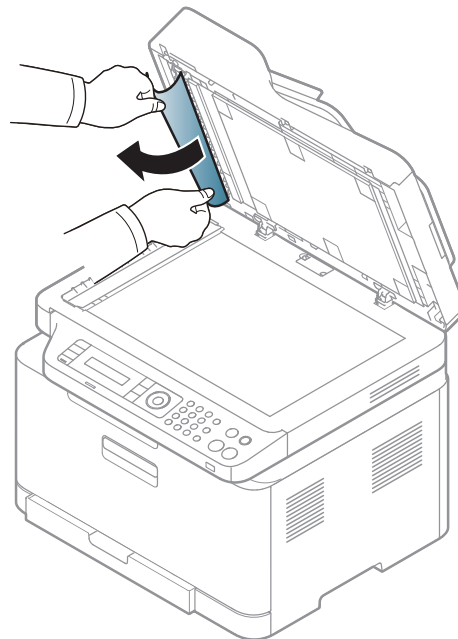
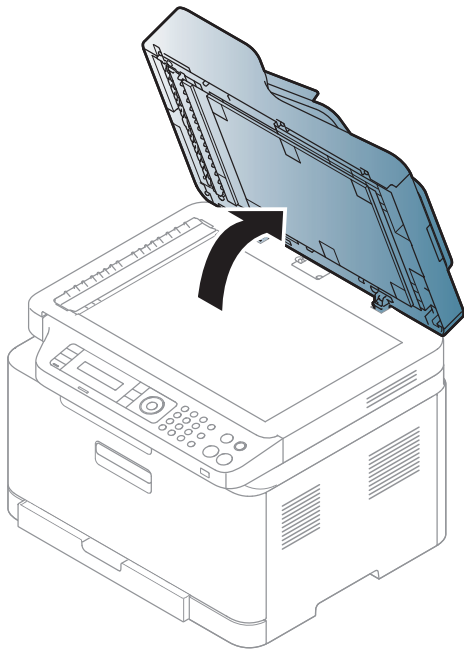
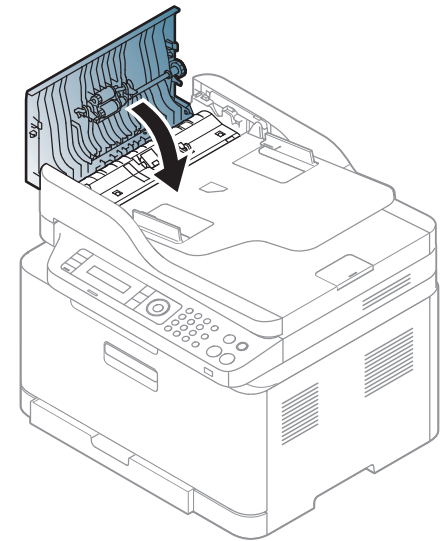
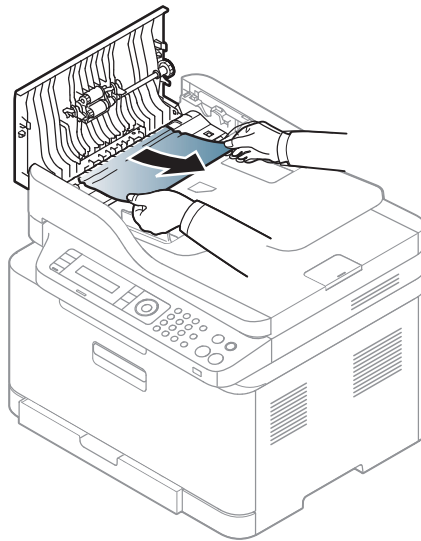
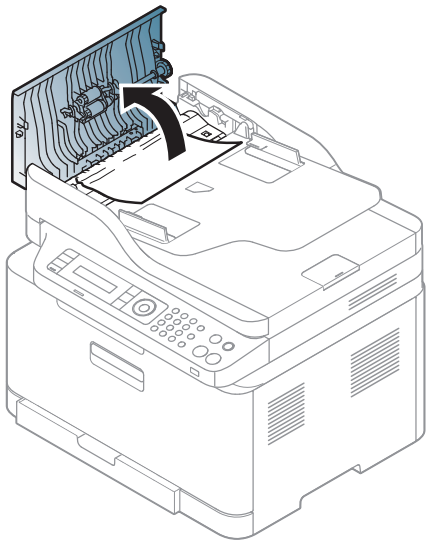
# Clearing original document jams

## Original paper jam inside of scanner



- Illustrations on this user's guide may differ from your machine depending on its options or models. Check your machine type (see "Front view" on page 20).
- This troubleshooting may not be available depending on model or optional goods (see "Variety feature" on page 9).

# Clearing original document jams



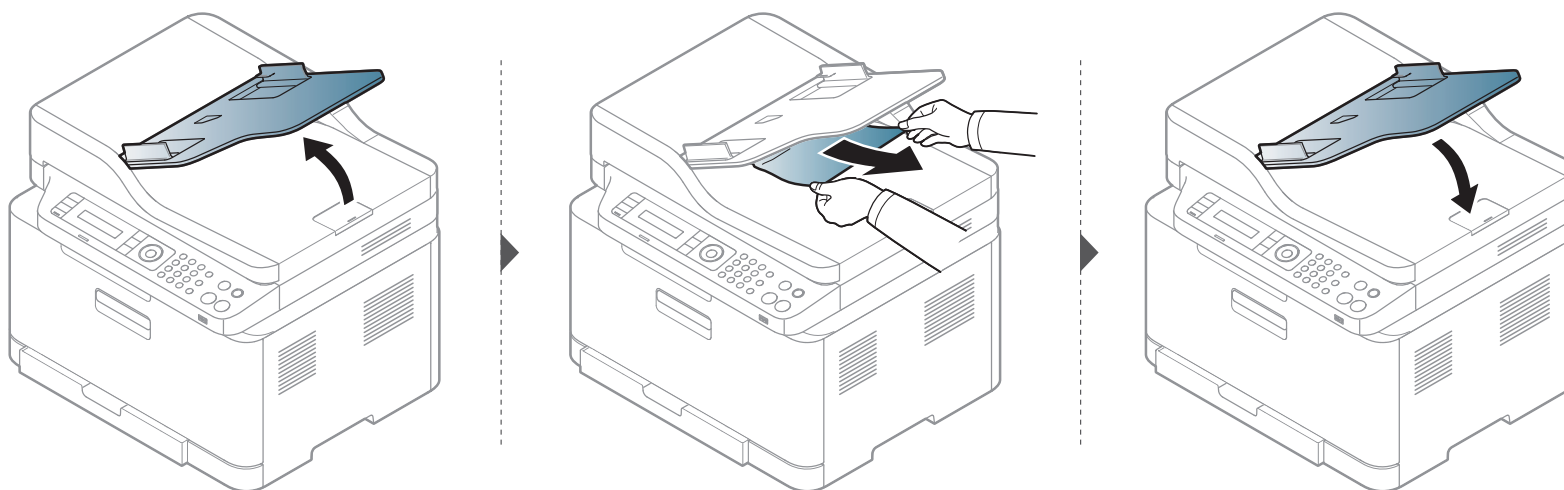
# Clearing original document jams

## Original paper jam in exit area of scanner



- Illustrations on this user's guide may differ from your machine depending on its options or models. Check your machine type (see "Front view" on page 20).
- This troubleshooting may not be available depending on model or optional goods (see "Front view" on page 20).

- 1 Remove any remaining pages from the document feeder.
- 2 Gently remove the jammed paper from the document feeder.



# Clearing paper jams



To avoid tearing the paper, pull the jammed paper out slowly and gently.

## In tray



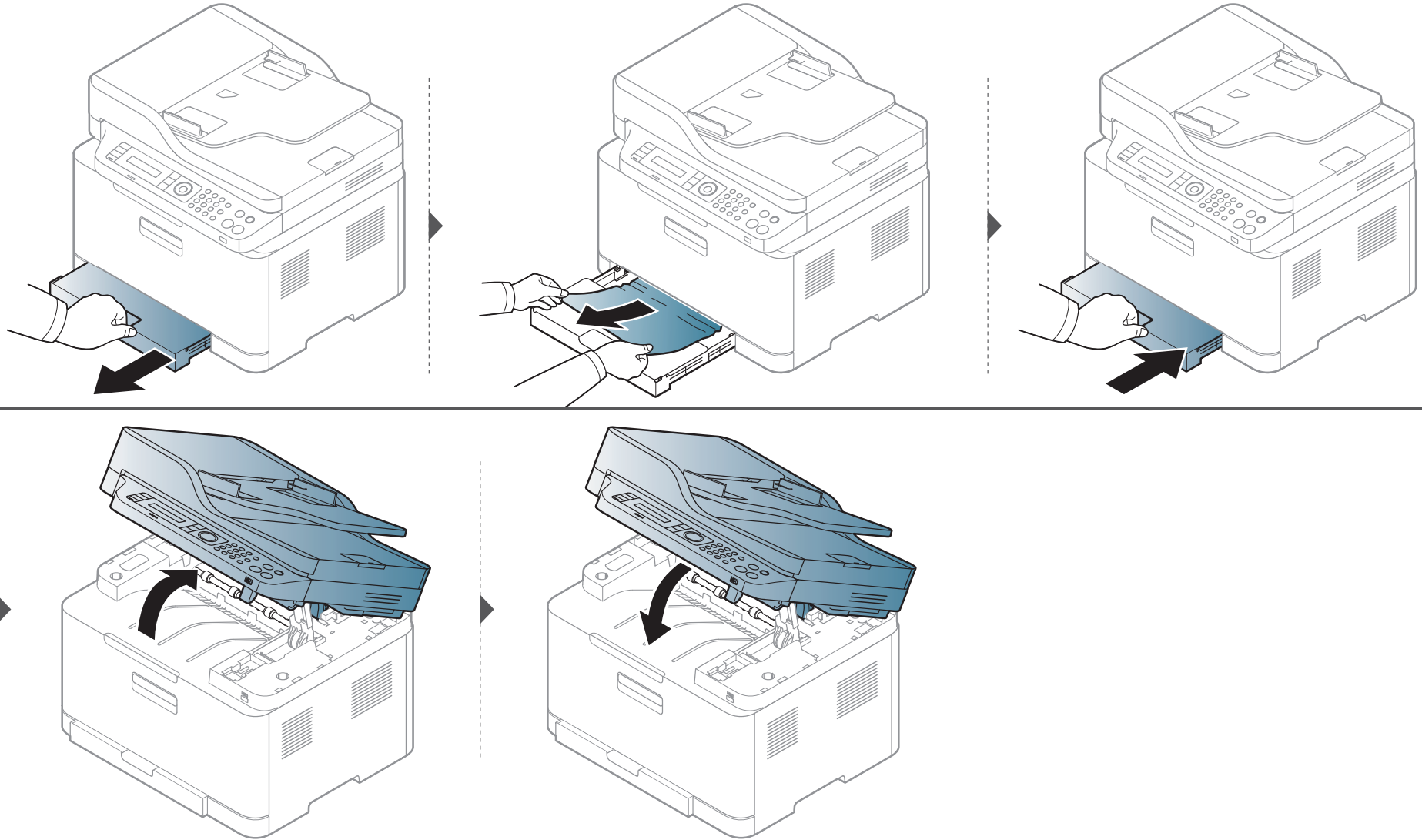
Click this link to open an animation about clearing a jam.



Illustrations on this user's guide may differ from your machine depending on its options or models. Check your machine type (see "Front view" on page 20).



# Clearing paper jams



# Clearing paper jams

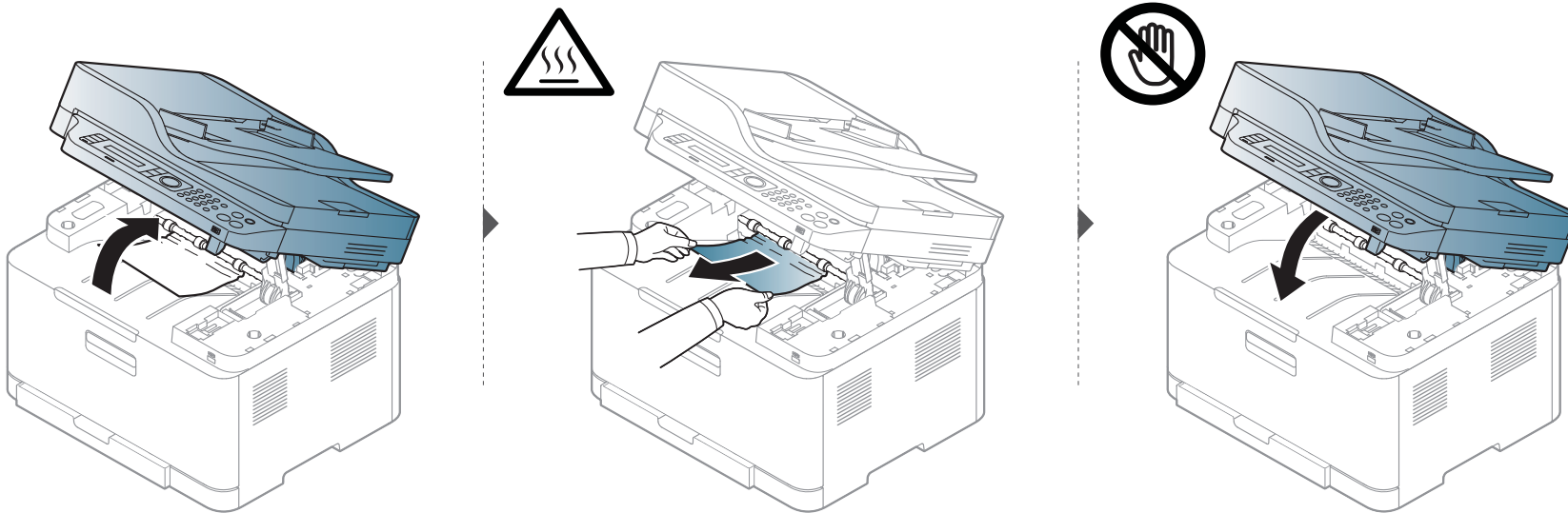
## Inside the machine



Click this link to open an animation about clearing a jam.

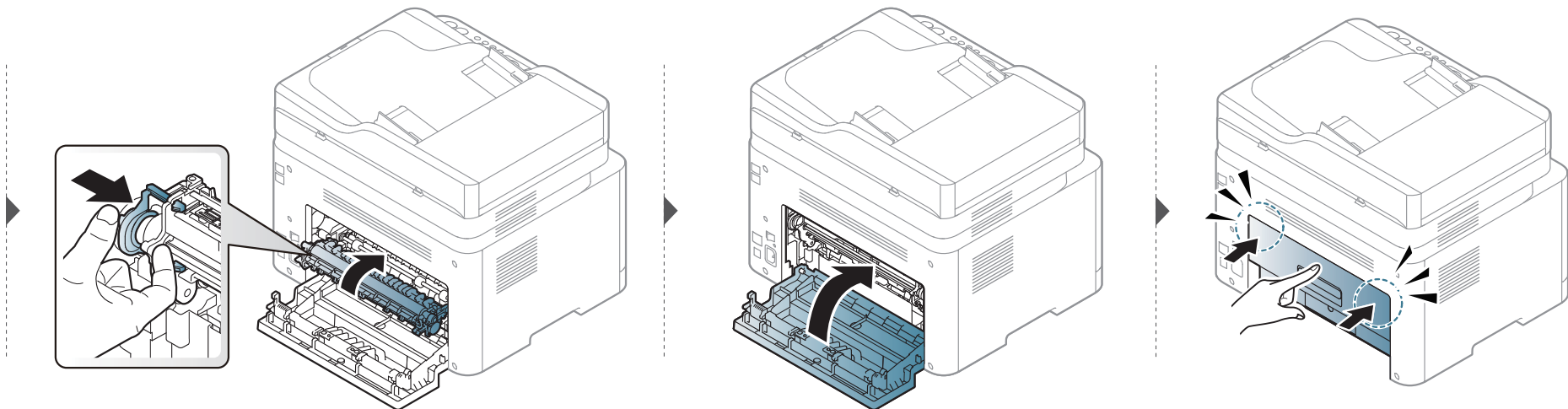
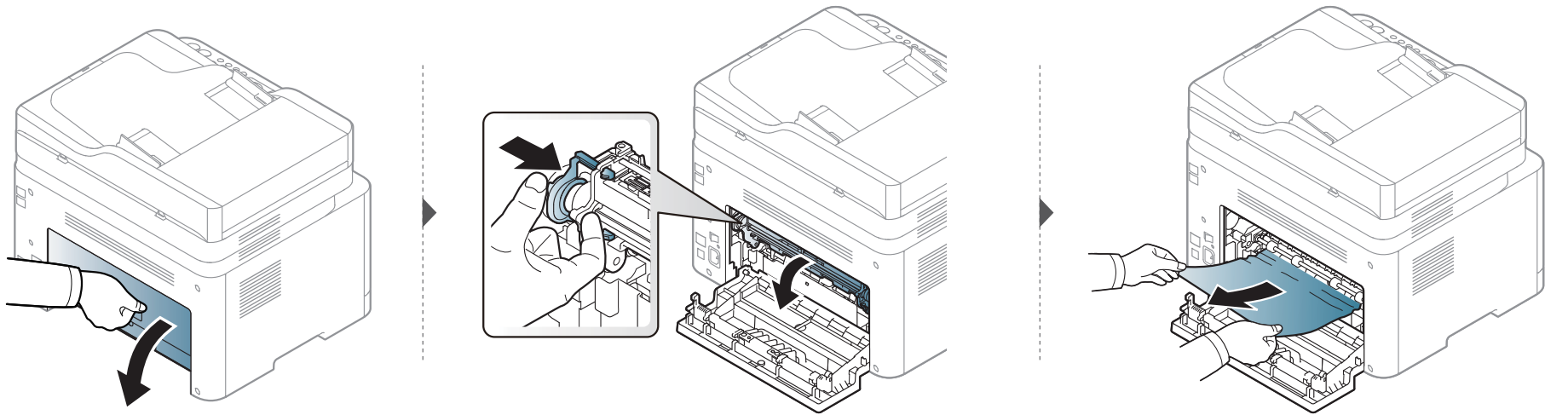


- The fuser area is hot. Take care when removing paper from the machine.
- Illustrations on this user's guide may differ from your machine depending on its options or models. Check your machine type (see "Front view" on page 20).



# Clearing paper jams

If you do not see the paper in this area, stop and go to next step:



# Understanding the status LED

The color of the LED indicates the machine's current status.



- Some LEDs may not be available depending on model or country (see "Control panel overview" on page 23).
- To resolve the error, look at the error message and its instructions from the troubleshooting part (see "Understanding display messages" on page 108).
- You also can resolve the error with the guideline from the computers's Samsung Printing Status window (see "Using Samsung Printer Status" on page 269).
- If the problem persists, call a service representative.

LED	Status		Description
Status	Off		The machine is off-line.
	Green	Blinking	When the backlight blinks, the machine is receiving or printing data.
		On	<ul style="list-style-type: none"><li>• The machine is on-line and can be used.</li></ul>
	Red	Blinking	<ul style="list-style-type: none"><li>• A minor error has occurred and the machine is waiting for the error to be cleared. Check the display message. When the problem is cleared, the machine resumes.</li><li>• Small amount of toner is left in the cartridge. The estimated cartridge life<sup>a</sup> of toner is close. Prepare a new cartridge for replacement. You may temporarily increase the printing quality by redistributing the toner (see "Redistributing toner" on page 79).<sup>b</sup></li></ul>
		On	<ul style="list-style-type: none"><li>• A toner cartridge has almost reached its estimated cartridge life<sup>a</sup>. It is recommended to replace the toner cartridge (see "Replacing the toner cartridge" on page 81).</li><li>• The cover is opened. Close the cover.</li><li>• There is no paper in the tray when receiving or printing data. Load paper in the tray.</li><li>• The machine has stopped due to a major error. Check the display message (see "Understanding display messages" on page 108).</li><li>• A paper jam has occurred (see "Clearing paper jams" on page 102).</li></ul>

# Understanding the status LED

LED	Status		Description
Wireless <sup>b</sup>	Blue	Blinking	The machine is connecting to a wireless network.
		On	The machine is connected to a wireless network (see "Wireless network setup" on page 160).
		Off	The machine is disconnected from a wireless network.
Power/Wakeup (⏻)	Blue	On	The machine is in power save mode.
		Off	The machine is in ready mode or machine's power is off.
Eco	Green	On	Eco mode is on. The default setting of Eco mode is 2-up and toner save.
		Off	Eco mode is off.
Scan to	Green	On	Eco mode is on. The default setting of Eco mode is 2-up and toner save.
		Off	Eco mode is off.

a. Estimated cartridge life means the expected or estimated toner cartridge life, which indicates the average capacity of print-outs and is designed pursuant to ISO/IEC 19798. The number of pages may be affected by operating environment, percentage of image area, printing interval, graphics, media and media size. Some amount of toner may remain in the cartridge even when red LED is on and the printer stops printing.

b. Some LEDs may not be available depending on model or country (see "Control panel overview" on page 23).

# Understanding display messages

Messages appear on the control panel display to indicate the machine's status or errors. Refer to the tables below to understand the messages' and their meaning, and correct the problem, if necessary.



- This function is not supported for the devices which has a control panel display. You can resolve the error with the guideline from the computers's Printing Status window (see "Using Samsung Printer Status" on page 269).
- If a message is not in the table, reboot the power and try the printing job again. If the problem persists, call a service representative.
- When you call for service, provide the service representative with the contents of display message.
- Some messages may not appear on the display depending on the options or models.
- [error number] indicates the error number.
- [tray type] indicates the tray number.
- [media type] indicates the media type.
- [media size] indicates the media size.
- [color] indicates the color of toner.

## Paper Jam-related messages

Message	Meaning	Suggested solutions
<b>Document jam. Remove jam</b>	The loaded original document has jammed in the document feeder.	Clear the jam (see "Clearing original document jams" on page 97).
<b>Jam or empty Door open&amp;close</b>	<ul style="list-style-type: none"><li>• Paper has jammed in the paper feed area.</li><li>• There is no paper in tray.</li></ul>	<ul style="list-style-type: none"><li>• Clear the jam (see "In tray" on page 102).</li><li>• Load paper in tray (see "Loading paper in the tray" on page 42).</li></ul>
<b>Paper Jam inside machine</b>	Paper has jammed in the inside machine.	Clear the jam (see "Inside the machine" on page 104).
<b>Paper Jam in [tray type]</b>	Paper has jammed in the paper tray.	Clear the jam (see "In tray" on page 102).
<b>Paper Jam in exit area</b>	Paper has jammed in the exit area.	Clear the jam (see "Original paper jam in exit area of scanner" on page 101).
<b>Paper Empty in [tray type]</b>	There is no paper in tray.	Load paper in tray (see "Loading paper in the tray" on page 42).

# Understanding display messages

## Toner-related messages

Message	Meaning	Suggested solutions
<ul style="list-style-type: none"> <li>• <b>Install Toner</b></li> <li>• <b>Install toner cartridge</b></li> </ul>	A toner cartridge is not installed.	Install a toner cartridge.
<ul style="list-style-type: none"> <li>• <b>Not Compatible [color] toner</b></li> <li>• <b>Not Compatible toner cartridge</b></li> </ul>	The toner cartridge is not suitable for your machine.	Install the corresponding toner cartridge with a Samsung-genuine cartridge.
<b>Not original [color] toner</b>	The toner cartridge is not a Samsung-genuine toner cartridge.	Install the corresponding toner cartridge with a Samsung-genuine cartridge.
<ul style="list-style-type: none"> <li>• <b>Prepare toner</b></li> <li>• <b>Prepare new cartridge</b></li> </ul>	Small amount of toner is left in the indicated cartridge. The estimated cartridge life of toner is close.	Prepare a new cartridge for a replacement. You may temporarily increase the printing quality by redistributing the toner (see "Redistributing toner" on page 79).

Message	Meaning	Suggested solutions
<ul style="list-style-type: none"> <li>• <b>Replace toner</b></li> <li>• <b>Replace new cartridge</b></li> </ul>	The indicated toner cartridge has almost reached its estimated cartridge life. <sup>a</sup>	<ul style="list-style-type: none"> <li>• You can choose <b>Stop</b> or <b>Continue</b> as shown on the control panel. If you select <b>Stop</b>, the printer stops printing and you cannot print any more without changing the cartridge. If you select <b>Continue</b>, the printer keeps printing but the printing quality cannot be guaranteed.</li> <li>• Replace the toner cartridge for the best print quality when this message appears. Using a cartridge beyond this stage can result in printing quality issues (see "Replacing the toner cartridge" on page 81).</li> </ul>
	The indicated toner cartridge has reached its estimated cartridge life. <sup>a</sup> The machine might stop printing.	Replace the toner cartridge (see "Replacing the toner cartridge" on page 81).

# Understanding display messages

- a. Estimated cartridge life means the expected or estimated toner cartridge life, which indicates the average capacity of print-outs and is designed pursuant to ISO/IEC 19752 (see "Available supplies" on page 75). The number of pages may be affected by operating environment, percentage of image area, printing interval, media, percentage of image area, and media size. Some amount of toner may remain in the cartridge even when replace new cartridge appears and the machine stops printing.



Samsung does not recommend using a non-genuine Samsung toner cartridge such as refilled or remanufactured. Samsung cannot guarantee a non-genuine Samsung toner cartridge's quality. Service or repair required as a result of using non-genuine Samsung toner cartridges will not be covered under the machine warranty.



# Understanding display messages

## Tray-related messages

Message	Meaning	Suggested solutions
<b>Jam or empty Door open&amp;close</b>	<ul style="list-style-type: none"><li>Paper has jammed in the paper feed area.</li><li>There is no paper in tray.</li></ul>	<ul style="list-style-type: none"><li>Clear the jam (see "In tray" on page 102).</li><li>Load paper in tray (see "Loading paper in the tray" on page 42).</li></ul>

## Network-related messages

Message	Meaning	Suggested solutions
<b>Network Problem: IP Conflict</b>	The network IP address you have set is being used by someone else.	Check the IP address and reset it if necessary (see "Printing a network configuration report" on page 148).
<b>Wireless Network Error</b>	Wireless module is not installed.	Reboot the power and try the printing job again. If the problem persists, please call for service.

Message	Meaning	Suggested solutions
<ul style="list-style-type: none"><li><b>BOOTP problem: Auto IP Run</b></li><li><b>DHCP problem: Auto IP Run</b></li></ul>	There is a problem with the network.	Change the Auto IP.
<ul style="list-style-type: none"><li><b>BOOTP problem: Reconfigure DHCP</b></li><li><b>DHCP problem: Reconfigure DHCP</b></li></ul>	The IP address assignment is failed. This happens, when Auto IP for BOOTP/DHCP is set in SyncThru™ Web Service.	Change the IP address assignment method to DHCP/BOOTP or Static. If you do not change this option, the BOOTP/DHCP server continually asks to assign the IP Address.
<b>802.1x Network Error</b>	Fail to authenticate.	Check the network authentication protocol. If the problem persists, contact your network administrator.

## Misc. messages

Message	Meaning	Suggested solutions
<b>Adjusting Color Registration</b>	The machine is adjusting the color registration.	Wait a few minutes.

# Understanding display messages

Message	Meaning	Suggested solutions
<b>Calibrating image density...</b>	The machine is calibrating the image density.	Wait a few minutes.
<b>Door Open</b> <b>Close it</b>	The cover is not securely latched.	Close the cover until it locks into place.
<b>Scanner open</b> <b>Close it</b>	The document feeder cover is not securely latched.	Close the cover until it locks into place.
<b>Door of scanner is open.</b>	The cover of scanner is not securely latched.	Close the cover until it locks into place.
<b>Error</b> [error number] <b>Install</b> [color] <b>toner</b>	The indicated toner cartridge is installed improperly, or the connector is polluted.	Reinstall the Samsung-genuine toner cartridge two or three times to confirm it is seated properly. Or clean the connector. If the problem persists, contact the service representatives.
<b>Error</b> [error number] <b>Turn off then on</b>	The machine unit cannot be controlled.	Reboot the power and try the printing job again. If the problem persists, please call for service.
<b>Error</b> [error number] <b>Call for service</b>		
<b>Scanner Locked</b>	The scanner is locked.	Reboot the power. If the problem persists, please call for service.

Message	Meaning	Suggested solutions
<b>Install TR. belt unit.</b>	The transfer belt is not installed.	Install a Samsung-genuine transfer belt.
<b>Not compatible transfer belt</b>	The transfer belt of the machine is not for your machine.	Install the a Samsung-genuine part designed for your machine.
<b>Not installed Waste tank</b>	The is waste toner container not installed.	Install a Samsung-genuine waste toner container.
<b>Not proper room temp. Move set</b>	The machine is in a room with improper room temperature.	Move the machine to a room with proper room temperature.
<b>Output bin Full</b> <b>Remove paper</b>	The output tray is full. Or the sensor is not facing down.	Remove papers from the output tray, the machine resumes printing. Or make sure the sensor is facing down. If the problem persists, call for service.
<b>Prepare new Transfer belt</b>	The life of the transfer belt will expired soon.	Replace the transfer belt with a new one. Contact the service representatives.

# Understanding display messages

Message	Meaning	Suggested solutions
<b>Replace new Transfer belt</b>	The life of the transfer belt has expired.	Replace the transfer belt with a new one. Contact the service representatives.
<b>Transfer Belt Error</b>	The transfer belt cannot be controlled.	Reboot the power and try the printing job again. If the problem persists, please call for service.
<b>Prepare new Transfer roller</b>	The life of the transfer belt will expired soon.	Replace the transfer belt with a new one. Contact the service representatives.
<b>Replace new Transfer roller</b>	The life of the transfer belt has expired.	Replace the transfer belt with a new one. Contact the service representatives.
<b>Replace Fuser Soon</b>	The life of the fuser unit will be expired soon.	Replace the fuser unit with a new one. Contact the service representatives.
<b>Replace new Fuser unit</b>	The life of the fuser unit will be expired.	

Message	Meaning	Suggested solutions
<b>Replace/Install Waste Toner Tank</b>	The life span of the waste toner container has expired and the printer will stop printing until a new waste toner container is placed into the printer.	Replace a waste toner container with a Samsung-genuine waste toner container.
<b>Prepare new Imaging unit</b>	The life of the imaging unit will be expired soon.	Replace the imaging unit with a new one. Contact the service representatives.
<b>Replace with new imaging unit</b>	The life of the imaging unit will be expired.	
<b>Install imaging unit</b>	The imaging unit is not installed	
<b>Error [error number] Door open/close</b>	The imaging unit is installed improperly, or the cover is not securely latched.	Reinstall the imaging unit to confirm it is seated properly. Close the cover until it locks into place.



## 5. Appendix

This chapter provides product specifications and information concerning applicable regulations.

- **Specifications**
- **Regulatory information**
- **Copyright**

**115**

**124**

**137**



# Specifications

## General specifications



The specification values listed below are subject to change without notice. See [www.samsung.com](http://www.samsung.com) for possible changes in information.

Items		Description	
Dimension	Width x Length x Height	CLX-330x Series	406 x 362 x 293.5 mm (16 x 14.3 x 11.6 inches)
		CLX-330xW Series	
		CLX-330xFN Series	406 x 362 x 333.5 mm (16 x 14.3 x 13.1 inches)
		CLX-330xFW Series	
Weight	Machine with consumables	CLX-330x Series	14.5 Kg (32 lbs)
		CLX-330xW Series	
		CLX-330xFN Series	15.4 Kg (34 lbs)
		CLX-330xFW Series	
Noise Level <sup>a</sup>	Ready mode	Less than 26 dB (A)	
	Print mode	Less than 50 dB (A)	
	Copy mode	Scanner glass	Less than 50 dB (A)
		Document feeder	Less than 52 dB (A)
	Scan mode	Scanner glass	Less than 52 dB (A)
		Document feeder	Less than 54 dB (A)
Temperature	Operation	10 to 32°C (50 to 89.6°F)	
	Storage (packed)	-20 to 40°C (-4 to 104°F)	

# Specifications

	Items	Description
<b>Humidity</b>	<b>Operation</b>	20 to 80% RH
	<b>Storage (packed)</b>	10 to 90% RH
<b>Power rating<sup>b</sup></b>	<b>110 volt models</b>	AC 110 - 127 V
	<b>220 volt models</b>	AC 220 - 240 V
<b>Power consumption</b>	<b>Average operating mode</b>	Less than 290 W
	<b>Ready mode</b>	Less than 60 W
	<b>Power save mode</b>	<ul style="list-style-type: none"> <li>• <b>CLX-330x Series:</b> Less than 1.2 W</li> <li>• <b>CLX-330xFN Series:</b> Less than 1.6 W</li> <li>• <b>CLX-330xW/CLX-330xFW Series:</b> Less than 2.1 W</li> </ul>
	<b>Power off mode</b>	Less than 0.45 W
<b>Wireless<sup>c</sup></b>	<b>Module</b>	T77H262/SPW-B4319S

a. Sound Pressure Level, ISO 7779. Configuration tested: basic machine installation, A4 paper, simplex printing.

b. See the rating label on the machine for the correct voltage (V), frequency (hertz) and of current (A) for your machine.

c. Wireless models only (see "Features by models" on page 7).

# Specifications

## Print media specifications

Type	Size	Dimensions	Print media weight/Capacity <sup>a</sup>	
			Tray	Manual feeding in tray <sup>b</sup>
Plain paper	<b>Letter</b>	216 x 279 mm (8.5 x 11 inches)	60 to 85 g/m <sup>2</sup> (16 to 23 lbs bond)  • 130 sheets of 80 g/m <sup>2</sup> (21 lbs bond)	60 to 85 g/m <sup>2</sup> (16 to 23 lbs bond)  • 1 sheet
	<b>Legal</b>	216 x 356 mm (8.5 x 14 inches)		
	<b>US Folio</b>	216 x 330 mm (8.5 x 13 inches)		
	<b>A4</b>	210 x 297 mm (8.27 x 11.69 inches)		
	<b>Oficio</b>	216 x 343 mm (8.5 x 13.5 inches)		
	<b>JIS B5</b>	182 x 257 mm (7.17 x 10.12 inches)		
	<b>ISO B5</b>	176 x 250 mm (6.93 x 9.84 inches)		
	<b>Executive</b>	184 x 267 mm (7.25 x 10.5 inches)		
	<b>A5</b>	148 x 210 mm (5.83 x 8.27 inches)		
	<b>A6</b>	105 x 148 mm (4.13 x 5.83 inches)		
Thick paper	Refer to the Plain paper section	Refer to the Plain paper section	86 to 120 g/m <sup>2</sup> (23 to 32 lbs bond)  • 50 sheets of 120 g/m <sup>2</sup> (32 lbs bond)	86 to 120 g/m <sup>2</sup> (23 to 32 lbs bond)  • 1 sheet

# Specifications

Type	Size	Dimensions	Print media weight/Capacity <sup>a</sup>	
			Tray	Manual feeding in tray <sup>b</sup>
Thin paper	Refer to the Plain paper section	Refer to the Plain paper section	60 to 70 g/m <sup>2</sup> (16 to 19 lbs bond) • 150 sheets of 60 g/m <sup>2</sup> (16 lbs bond)	60 to 70 g/m <sup>2</sup> (16 to 19 lbs bond) • 1 sheet
Cotton	Refer to the Plain paper section	Refer to the Plain paper section	75 to 90 g/m <sup>2</sup> (20 to 24 lbs bond) • 130 sheets of 80 g/m <sup>2</sup> (21 lbs bond)	75 to 90 g/m <sup>2</sup> (20 to 24 lbs bond) • 1 sheet
Colored, Pre-printed, Recycled	Refer to the Plain paper section	Refer to the Plain paper section	60 to 85 g/m <sup>2</sup> (16 to 24 lbs bond) • 130 sheets of 80 g/m <sup>2</sup> (21 lbs bond)	60 to 85 g/m <sup>2</sup> (16 to 24 lbs bond) • 1 sheet
Labels <sup>c</sup>	Letter, Legal, Oficio, US Folio, A4, JIS B5, ISO B5, Executive, A5	Refer to the Plain paper section	120 to 150 g/m <sup>2</sup> (32 to 40 lbs bond) • 5 sheets	120 to 150 g/m <sup>2</sup> (32 to 40 lbs bond) • 1 sheet
Card stock	Letter, Legal, Oficio, US Folio, A4, JIS B5, ISO B5, Executive, A5, Postcard 4x6	Refer to the Plain paper section	121 to 163 g/m <sup>2</sup> (32 to 43 lbs bond) • 5 sheets	121 to 163 g/m <sup>2</sup> (32 to 43 lbs bond) • 1 sheet
Bond paper	Refer to the Plain paper section	Refer to the Plain paper section	105 to 120 g/m <sup>2</sup> (28 to 32 lbs bond) • 10 sheets	• 1 sheet




# Specifications

Type	Size	Dimensions	Print media weight/Capacity <sup>a</sup>	
			Tray	Manual feeding in tray <sup>b</sup>
Archive	Refer to the Plain paper section	Refer to the Plain paper section	70 to 90 g/m <sup>2</sup> (18.6 to 24 lbs bond) • 100 sheets	• 1 sheet
Glossy Photo, Matte Photo	Letter, A4, Postcard 4x6	Refer to the Plain paper section	111 to 220 g/m <sup>2</sup> (30 to 58 lbs bond) • 1 sheets	111 to 220 g/m <sup>2</sup> (30 to 58 lbs bond) • 1 sheet
Minimum size (custom)		76 x 152 mm (3 x 6 inches)	60 to 120 g/m <sup>2</sup> (16 to 32 lbs bond)	
Maximum size (custom)		216 x 356 mm (8.5 x 14 inches)		

a. Maximum capacity may differ depending on media weight, thickness, and environmental conditions.

b. Feed one sheet at a time.

c. The smoothness of the labels used in this machine is 100 to 250 (sheffield). This means the numeric level of smoothness.

 If media weight is over 120 g/m<sup>2</sup> (32 lbs bond), load a paper into the tray one by one.

# Specifications

## System requirements

### Microsoft® Windows®

Operating system	Requirement (recommended)		
	CPU	RAM	free HDD space
<b>Windows® 2000</b>	Intel® Pentium® II 400 MHz (Pentium III 933 MHz)	64 MB (128 MB)	600 MB
<b>Windows® XP</b>	Intel® Pentium® III 933 MHz (Pentium IV 1 GHz)	128 MB (256 MB)	1.5 GB
<b>Windows Server® 2003</b>	Intel® Pentium® III 933 MHz (Pentium IV 1 GHz)	128 MB (512 MB)	1.25 GB to 2 GB
<b>Windows Server® 2008</b>	Intel® Pentium® IV 1 GHz (Pentium IV 2 GHz)	512 MB (2 GB)	10 GB
<b>Windows Vista®</b>	Intel® Pentium® IV 3 GHz	512 MB (1 GB)	15 GB
<b>Windows® 7</b>	Intel® Pentium® IV 1 GHz 32-bit or 64-bit processor or higher	1 GB (2 GB)	16 GB
	<ul style="list-style-type: none"><li>• Support for DirectX® 9 graphics with 128 MB memory (to enable the Aero theme).</li><li>• DVD-R/W Drive</li></ul>		
<b>Windows Server® 2008 R2</b>	Intel® Pentium® IV 1 GHz (x86) or 1.4 GHz (x64) processors (2 GHz or faster)	512 MB (2 GB)	10 GB



- Internet Explorer 6.0 or higher is the minimum requirement for all Windows operating systems.
- Users who have administrator rights can install the software.

# Specifications

- **Windows Terminal Services** is compatible with your machine.
- For **Windows 2000, Services Pack 4** or higher is required.

## Macintosh

Operating system	Requirements (Recommended)		
	CPU	RAM	Free HDD space
<b>Mac OS X 10.4</b>	<ul style="list-style-type: none"><li>• Intel® processors</li><li>• PowerPC G4/G5</li></ul>	<ul style="list-style-type: none"><li>• 128 MB for a powerPC based Mac (512 MB)</li><li>• 512 MB for an Intel-based Mac (1 GB)</li></ul>	1 GB
<b>Mac OS X 10.5</b>	<ul style="list-style-type: none"><li>• Intel® processors</li><li>• 867 MHz or faster Power PC G4/G5</li></ul>	512 MB (1 GB)	1 GB
<b>Mac OS X 10.6</b>	<ul style="list-style-type: none"><li>• Intel® processors</li></ul>	1 GB (2 GB)	1 GB
<b>Mac OS X 10.7</b>	<ul style="list-style-type: none"><li>• Intel® processors</li></ul>	2 GB	4 GB

# Specifications

## Linux

Items	Requirements
<b>Operating system</b>	Redhat® Enterprise Linux WS 4, 5 (32/64 bit) Fedora 5 ~ 13 (32/64 bit) SuSE Linux 10.1 (32 bit) OpenSuSE® 10.2, 10.3, 11.0, 11.1, 11.2 (32/64 bit) Mandriva 2007, 2008, 2009, 2009.1, 2010 (32/64 bit) Ubuntu 6.06, 6.10, 7.04, 7.10, 8.04, 8.10, 9.04, 9.10, 10.04 (32/64 bit) SuSE Linux Enterprise Desktop 10, 11 (32/64 bit) Debian 4.0, 5.0 (32/64 bit)
<b>CPU</b>	Pentium IV 2.4GHz (Intel Core™2)
<b>RAM</b>	512 MB (1 GB)
<b>Free HDD space</b>	1 GB (2 GB)

# Specifications

## Network environment



Network and wireless models only (see "Features by models" on page 7).

You need to set up the network protocols on the machine to use it as your network machine. The following table shows the network environments supported by the machine.

Items	Specifications
<b>Network interface</b>	<ul style="list-style-type: none"><li>• Ethernet 10/100 Base-TX Wired Lan</li><li>• 802.11b/g/n Wireless LAN</li></ul>
<b>Network operating system</b>	<ul style="list-style-type: none"><li>• Windows® 2000, Windows® XP, Windows Server® 2003, Windows Vista®, Windows® 7, Windows Server® 2008 R2</li><li>• Various Linux OS</li><li>• Mac OS X 10.4 ~10.7</li></ul>
<b>Network protocols</b>	<ul style="list-style-type: none"><li>• TCP/IPv4</li><li>• DHCP, BOOTP</li><li>• DNS, WINS, Bonjour, SLP, UPnP</li><li>• Standard TCP/IP Printing (RAW), LPR, IPP, WSD</li><li>• SNMPv 1/2/3, HTTP</li><li>• TCP/IPv6 (DHCP, DNS, RAW, LPR, SNMPv 1/2/3, HTTP)</li></ul>
<b>Wireless security</b>	<ul style="list-style-type: none"><li>• Authentication: Open System, Shared Key, WPA Personal, WPA2 Personal (PSK)</li><li>• Encryption: WEP64, WEP128, TKIP, AES</li></ul>

# Regulatory information

This machine is designed for a normal work environment and certified with several regulatory statements.

## Laser safety statement

The printer is certified in the U.S. to conform to the requirements of DHHS 21 CFR, chapter 1 Subchapter J for Class I(1) laser products, and elsewhere is certified as a Class I laser product conforming to the requirements of IEC 60825-1 : 2007.

Class I laser products are not considered to be hazardous. The laser system and printer are designed so there is never any human access to laser radiation above a Class I level during normal operation, user maintenance or prescribed service condition.

## Warning

Never operate or service the printer with the protective cover removed from laser/scanner assembly. The reflected beam, although invisible, can damage your eyes.

When using this product, these basic safety precautions should always be followed to reduce risk of fire, electric shock, and injury to persons:



CAUTION - CLASS 3B. INVISIBLE LASER RADIATION WHEN OPEN. AVOID EXPOSURE TO THE BEAM.

DANGER - INVISIBLE LASER RADIATION WHEN OPEN. AVOID DIRECT EXPOSURE TO BEAM.

DANGER - KLASSE 3B. UNSICHTBARE LASERSTRAHLUNG, WENN OFFEN. STRAHLENAUSSETZUNG VERMEIDEN.

VORSICHT - UNSICHTBARE LASERSTRAHLUNG KLASSE 3 B, WENN ABDECKUNG GEÖFFNET. NICHT DEM STRAHL AUSSETZEN.

ATTENZIONE - CLASSE 3B. RADIZIONI LASER INVISIBILI CON IL DISPOSITIVO APERTO. EVITARE L'ESPOSIZIONE AL RAGGIO.

PRECAUCIÓN - RADIACIÓN LÁSER INVISIBLE DE CLASE 3B PRESENTE AL ABRIR. EVITE LA EXPOSICIÓN AL HAZ.

PERIGO - CLASSE 3B. RADIAÇÃO LASER INVISÍVEL AO ABRIR. EVITE EXPOSIÇÃO DIRECTA AO FEIXE.

GEVAAR - KLASSE 3B. ONZICHTBARE LASERSTRALING INDIEN GEOPEND. VERMIJD BLOOTSTELLING AAN DE STRAAL.

ADVARSEL - KLASSE 3B. USYNLIG LASERSTRÅLING VED ÅBNING. UNDGÅ UDSÆTTELSE FOR STRÅLING.

ADVARSEL - KLASSE 3B. USYNLIG LASERSTRÅLING NÅR DEKSEL ÅPNES. UNNGÅ EKSPONERING FOR STRÅLEN.

VARNING - KLASSE 3B OSYNLIG LASERSTRÅLNING NÅR DENNA DEL ÄR ÖPPNAD. STRÅLEN ÄR FARLIG.

VAROITUS - LUOKAN 3B NÄKYMÄTTÖMÄLLE LASER-SÄTEILYÄ AVATTUNA. VÄLTÄ ALTISTUMISTA SÄTEELLE.

注意 - CLASS 3B. 严禁打开，以免被不可见激光辐射泄漏灼伤

주의 - 열리면 등급 3B 비가시 레이저 방사선 이 방출됩니다. 광선에 노출을 피하십시오.

# Regulatory information

## Ozone safety



This product's ozone emission rate is under 0.1 ppm. Because ozone is heavier than air, keep the product in a place with good ventilation.

## Mercury Safety



Contains Mercury, Dispose According to Local, State or Federal Laws.(U.S.A. only)

## Power saver



This printer contains advanced energy conservation technology that reduces power consumption when it is not in active use.

When the printer does not receive data for an extended period of time, power consumption is automatically lowered.

ENERGY STAR and the ENERGY STAR mark are registered U.S. marks.

For more information on the ENERGY STAR program see <http://www.energystar.gov>

For ENERGY STAR certified models, the ENERGY STAR label will be on your machine. Check if your machine is ENERGY STAR certified.

## Recycling



Recycle or dispose of the packaging material for this product in an environmentally responsible manner.

# Regulatory information

## China only

### 回收和再循环

为了保护环境，我公司已经为废弃的产品建立了回收和再循环系统。我们会为您无偿提供回收同类废旧产品的服务。当您要废弃您正在使用的产品时，请您及时与授权耗材更换中心取得联系，我们会及时为您提供服务。

## Correct disposal of this product (Waste electrical & electronic equipment)

### (Applicable in the European Union and other European countries with separate collection systems)



This marking on the product, accessories or literature indicates that the product and its electronic accessories (e.g. charger, headset, USB cable) should not be disposed of with other household waste at the end of their working life. To prevent possible harm to the environment or human health from uncontrolled waste disposal, please separate these items from other s of waste and recycle them responsibly to promote the sustainable reuse of material resources.

Household users should contact either the retailer where they purchased this product, or their local government office, for details of where and how they can take these items for environmentally safe recycling.

Business users should contact their supplier and check the terms and conditions of the purchase contract. This product and its electronic accessories should not be mixed with other commercial wastes for disposal.



# Regulatory information

## (The United States of America only)

Dispose unwanted electronics through an approved recycler. To find the nearest recycling location, go to our website: [www.samsung.com/recyclingdirect](http://www.samsung.com/recyclingdirect) Or call, (877) 278 - 0799

## Taiwan only

### 警告

本電池如果更換不正確會有爆炸的危險  
請依製造商說明書處理用過之電池

## Radio frequency emissions

## FCC information to the user

This device complies with Part 15 of the FCC Rules. Operation is subject to the following two conditions:

- This device may not cause harmful interference, and
- This device must accept any interference received, including interference that may cause undesired operation.

This equipment has been tested and found to comply with the limits for a Class B digital device, pursuant to Part 15 of the FCC Rules. These limits are designed to provide reasonable protection against harmful interference in a residential installation. This equipment generates, uses and can radiate radio frequency energy and, if not installed and used in accordance with the instructions, may cause harmful interference to radio communications. However, there is no guarantee that interference will not occur in a particular installation. If this equipment does cause harmful interference to radio or television reception, which can be determined by turning the equipment off and on, the user is encouraged to try to correct the interference by one or more of the following measures:

- Reorient or relocate the receiving antenna.
- Increase the separation between the equipment and receiver.
- Connect the equipment into an outlet on a circuit different from that to which the receiver is connected.
- Consult the dealer or experienced radio TV technician for help.



Change or modifications not expressly approved by the manufacturer responsible for compliance could void the user's authority to operate the equipment.

# Regulatory information

## Canadian radio interference regulations

This digital apparatus does not exceed the Class B limits for radio noise emissions from digital apparatus as set out in the interference-causing equipment standard entitled “Digital Apparatus”, ICES-003 of the Industry and Science Canada.

Cet appareil numérique respecte les limites de bruits radioélectriques applicables aux appareils numériques de Classe B prescrites dans la norme sur le matériel brouilleur: “Appareils Numériques”, ICES-003 édictée par l’Industrie et Sciences Canada.

## United States of America

### Federal Communications Commission (FCC)

#### Intentional emitter per FCC Part 15

Low power, Radio LAN devices (radio frequency (RF) wireless communication devices), operating in the 2.4 GHz/5 GHz Band, may be present (embedded) in your printer system. This section is only applicable if these devices are present. Refer to the system label to verify the presence of wireless devices.

Wireless devices that may be in your system are only qualified for use in the United States of America if an FCC ID number is on the system label.

The FCC has set a general guideline of 20 cm (8 inches) separation between the device and the body, for use of a wireless device near the body (this does not include extremities). This device should be used more than 20 cm (8 inches) from the body when wireless devices are on. The power output of the wireless device (or devices), which may be embedded in your printer, is well below the RF exposure limits as set by the FCC.

This transmitter must not be collocated or operation in conjunction with any other antenna or transmitter.

Operation of this device is subject to the following two conditions: (1) This device may not cause harmful interference, and (2) this device must accept any interference received, including interference that may cause undesired operation of the device.



Wireless devices are not user serviceable. Do not modify them in any way. Modification to a wireless device will void the authorization to use it. Contact manufacturer for service.

# Regulatory information

## FCC Statement for Wireless LAN use:



While installing and operating this transmitter and antenna combination the radio frequency exposure limit of 1m W/cm<sup>2</sup> may be exceeded at distances close to the antenna installed. Therefore, the user must maintain a minimum distance of 20cm from the antenna at all times. This device cannot be colocated with another transmitter and transmitting antenna.

## Russia only

AB57



Минсвязи России



## Germany only

Das Gerät ist nicht für die Benutzung am Bildschirmarbeitsplatz gemäß BildscharbV vorgesehen.

## Turkey only

- **RoHS**

EEE Yönetmeliğine Uygundur.  
This EEE is compliant with RoHS.

- Bu ürünün ortalama yaşam süresi 7 yıl, garanti süresi 2 yıldır.

## Canada only

This product meets the applicable Industry Canada technical specifications. / Le présent matériel est conforme aux spécifications techniques applicables d'Industrie Canada.

# Regulatory information

The Ringer Equivalence Number (REN) is an indication of the maximum number of devices allowed to be connected to a telephone interface. The termination of an interface may consist of any combination of devices subject only to the requirement that the sum of the RENs of all the devices not exceed five. / L'indice d'équivalence de la sonnerie (IES) sert à indiquer le nombre maximal de terminaux qui peuvent être raccordés à une interface téléphonique. La terminaison d'une interface peut consister en une combinaison quelconque de dispositifs, à la seule condition que la somme d'indices d'équivalence de la sonnerie de tous les dispositifs n'excede pas cinq.

## Fax Branding

The Telephone Consumer Protection Act of 1991 makes it unlawful for any person to use a computer or other electronic device to send any message via a telephone facsimile machine unless such message clearly contains in a margin at the top or bottom of each transmitted page or on the first page of the transmission the following information:

- 1 the date and time of transmission
- 2 identification of either business, business entity or individual sending the message; and
- 3 telephone number of either the sending machine, business, business entity or individual.

The Telephone Company may make changes in its communications facilities, equipment operations or procedures where such action is reasonably required in the operation of its business and is not inconsistent with the rules and regulations in FCC Part 68. If such changes can be reasonably expected to render any customer terminal equipment incompatible with telephone company communications facilities, or require modification or alteration of such terminal equipment, or otherwise materially affect its use or performance, the customer shall be given adequate notice in writing, to allow the customer an opportunity to maintain uninterrupted service

## Ringer Equivalence Number

The Ringer Equivalence Number and FCC Registration Number for this machine may be found on the label located on the bottom or rear of the machine. In some instances you may need to provide these numbers to the telephone company.

The Ringer Equivalence Number (REN) is a measure of the electrical load placed on the telephone line, and is useful for determining whether you have "overloaded" the line. Installing several s of equipment on the same telephone line may result in problems making and receiving telephone calls, especially ringing when your line is called. The sum of all Ringer Equivalence Numbers of the equipment on your telephone line should be less than five in order to assure proper service from the telephone company. In some cases, a sum of five may not be usable on your line. If any of your telephone equipment is not operating properly, you should immediately remove it from your telephone line, as it may cause harm to the telephone network.

# Regulatory information

The equipment complies with Part 68 of the FCC rules and the requirements adopted by the ACTA. On the rear of this equipment is a label that contains, among other information, a product identifier in the format US:AAAEQ##TXXXX. If requested, this number must be provided to the telephone company.



FCC Regulations state that changes or modifications to this equipment not expressly approved by the manufacturer could void the user's authority to operate this equipment. In the event that terminal equipment causes harm to the telephone network, the telephone company should notify the customer that service may be stopped. However, where prior notice is impractical, the company may temporarily cease service, providing that they:

- a** promptly notify the customer.
- b** give the customer an opportunity to correct the equipment problem.
- c** inform the customer of the right to bring a complaint to the Federal Communication Commission pursuant to procedures set out in FCC Rules and Regulations Subpart E of Part 68.

## You should also know that:

- Your machine is not designed to be connected to a digital PBX system.
- If you intend to use a computer modem or fax modem on the same phone line as your machine, you may experience transmission and reception problems with all the equipment. It is recommended that no other equipment, except for a regular telephone, share the line with your machine.

- If your area experiences a high incidence of lightning or power surges, we recommend that you install surge protectors for both the power and the telephone lines. Surge protectors can be purchased from your dealer or telephone and electronic specialty stores.
- When programming emergency numbers and/or making test calls to emergency numbers, use a non-emergency number to advise the emergency service dispatcher of your intentions. The dispatcher will give you further instructions on how to actually test the emergency number.
- This machine may not be used on coin service or party lines.
- This machine provides magnetic coupling to hearing aids.

You may safely connect this equipment to the telephone network by means of a standard modular jack, USOC RJ-11C.

## Replacing the Fitted Plug (for UK Only)

### Important

The mains lead for this machine is fitted with a standard (BS 1363) 13 amp plug and has a 13 amp fuse. When you change or examine the fuse, you must re-fit the correct 13 amp fuse. You then need to replace the fuse cover. If you have lost the fuse cover, do not use the plug until you have another fuse cover.

Contact the people from you purchased the machine.

# Regulatory information

The 13 amp plug is the most widely used in the UK and should be suitable. However, some buildings (mainly old ones) do not have normal 13 amp plug sockets. You need to buy a suitable plug adaptor. Do not remove the moulded plug.



If you cut off the moulded plug, get rid of it straight away.

You cannot rewire the plug and you may receive an electric shock if you plug it into a socket.

## Important warning:



You must earth this machine.

The wires in the mains lead have the following color code:

- **Green and Yellow:** Earth
- **Blue:** Neutral
- **Brown:** Live

If the wires in the mains lead do not match the colors marked in your plug, do the following:

You must connect the green and yellow wire to the pin marked by the letter “E” or by the safety ‘Earth symbol’ or colored green and yellow or green.

You must connect the blue wire to the pin which is marked with the letter “N” or colored black.

You must connect the brown wire to the pin which is marked with the letter “L” or colored red.

You must have a 13 amp fuse in the plug, adaptor, or at the distribution board.

## Declaration of conformity (European countries)

### Approvals and Certifications

Hereby, Samsung Electronics, declares that this [CLX-330x Series] is in compliance with the essential requirements and other relevant provisions of Low Voltage Directive (2006/95/EC), EMC Directive (2004/108/EC).



Hereby, Samsung Electronics, declares that this [CLX-330xFN Series/CLX-330xW Series/CLX-330xFW Series] is in compliance with the essential requirements and other relevant provisions of R&TTE Directive 1999/5/EC.

The declaration of conformity may be consulted at **www.samsung.com**, go to Support > Download center and enter your printer (MFP) name to browse the EuDoC.

**January 1, 1995:** Council Directive 2006/95/EC Approximation of the laws of the member states related to low voltage equipment.

**January 1, 1996:** Council Directive 2004/108/EC, approximation of the laws of the Member States related to electromagnetic compatibility.

# Regulatory information

**March 9, 1999:** Council Directive 1999/5/EC on radio equipment and telecommunications terminal equipment and the mutual recognition of their conformity. A full declaration, defining the relevant Directives and referenced standards can be obtained from your Samsung Electronics Co., Ltd. representative.

## EC Certification

Certification to 1999/5/EC Radio Equipment & Telecommunications Terminal Equipment Directive (FAX)

This Samsung product has been self-certified by Samsung for pan-European single terminal connection to the analogue public switched telephone network (PSTN) in accordance with Directive 1999/5/EC. The product has been designed to work with the national PSTNs and compatible PBXs of the European countries:

In the event of problems, you should contact the Euro QA Lab of Samsung Electronics Co., Ltd. in the first instance.

The product has been tested against TBR21. To assist in the use and application of terminal equipment which complies with this standard, the European Telecommunication Standards Institute (ETSI) has issued an advisory document (EG 201 121) which contains notes and additional requirements to ensure network compatibility of TBR21 terminals. The product has been designed against, and is fully compliant with, all of the relevant advisory notes contained in this document.

## European radio approval information (for products fitted with EU-approved radio devices)

Low power, Radio LAN type devices (radio frequency (RF) wireless communication devices), operating in the 2.4 GHz/5 GHz band, may be present (embedded) in your printer system which is intended for home or office use. This section is only applicable if these devices are present. Refer to the system label to verify the presence of wireless devices.



Wireless devices that may be in your system are only qualified for use in the European Union or associated areas if a CE mark with a Notified Body Registration Number and the Alert Symbol is on the system label.

The power output of the wireless device or devices that may be embedded in your printer is well below the RF exposure limits as set by the European Commission through the R&TTE directive.

## European states qualified under wireless approvals:

EU countries

## European states with restrictions on use:

EU

In France, the frequency range is restricted to 2454-2483.5 MHz for devices above 10 mW transmitting power such as wireless

EEA/EFTA countries

# Regulatory information

No limitations at this time

## Israel only

מס' אישור אלחוטי של משרד התקשורת הוא 51-28466  
אסור להחליף את האנטנה המקורית של המכשיר,  
ולא לעשות בו כל שינוי טכני אחר.

## Regulatory compliance statements

### Wireless guidance

Low power, Radio LAN devices (radio frequency (RF) wireless communication devices), operating in the 2.4 GHz/5 GHz Band, may be present (embedded) in your printer system. The following section is a general overview of considerations while operating a wireless device.

Additional limitations, cautions, and concerns for specific countries are listed in the specific country sections (or country group sections). The wireless devices in your system are only qualified for use in the countries identified by the Radio Approval Marks on the system rating label. If the country you will be using the wireless device in, is not listed, contact your local Radio Approval agency for requirements. Wireless devices are closely regulated and use may not be allowed.

The power output of the wireless device or devices that may be embedded in your printer is well below the RF exposure limits as known at this time. Because the wireless devices (which may be embedded into your printer) emit less energy than is allowed in radio frequency safety standards and recommendations, manufacturer believes these devices are safe for use. Regardless of the power levels, care should be taken to minimize human contact during normal operation.

As a general guideline, a separation of 20 cm (8 inches) between the wireless device and the body, for use of a wireless device near the body (this does not include extremities) is typical. This device should be used more than 20 cm (8 inches) from the body when wireless devices are on and transmitting.

This transmitter must not be collocated or operation in conjunction with any other antenna or transmitter.

Some circumstances require restrictions on wireless devices. Examples of common restrictions are listed below:



Radio frequency wireless communication can interfere with equipment on commercial aircraft. Current aviation regulations require wireless devices to be turned off while traveling in an airplane. IEEE 802.11 (also known as wireless Ethernet) and Bluetooth communication devices are examples of devices that provide wireless communication.



# Regulatory information



In environments where the risk of interference to other devices or services is harmful or perceived as harmful, the option to use a wireless device may be restricted or eliminated. Airports, Hospitals, and Oxygen or flammable gas laden atmospheres are limited examples where use of wireless devices may be restricted or eliminated. When in environments where you are uncertain of the sanction to use wireless devices, ask the applicable authority for authorization prior to use or turning on the wireless device.



Every country has different restrictions on the use of wireless devices. Since your system is equipped with a wireless device, when traveling between countries with your system, check with the local Radio Approval authorities prior to any move or trip for any restrictions on the use of a wireless device in the destination country.



If your system came equipped with an internal embedded wireless device, do not operate the wireless device unless all covers and shields are in place and the system is fully assembled.



Wireless devices are not user serviceable. Do not modify them in any way. Modification to a wireless device will void the authorization to use it. Contact manufacturer for service.



Only use drivers approved for the country in which the device will be used. See the manufacturer System Restoration Kit, or contact manufacturer Technical Support for additional information.

# Regulatory information

## China only

### 产品中有毒有害物质或元素的名称及含量

部件名称	有毒有害物质或元素					
	铅 (Pb)	汞 (Hg)	镉 (Cd)	六价铬 (Cr <sup>6+</sup> )	多溴联苯 (PBB)	多溴联苯醚 (PBDE)
塑料	○	○	○	○	○	○
金属 ( 机箱 )	X	○	○	○	○	○
印刷电路部件 (PCA)	X	○	○	○	○	○
电缆 / 连接器	X	○	○	○	○	○
电源设备	X	○	○	○	○	○
电源线	X	○	○	○	○	○
机械部件	X	○	○	○	○	○
卡盒部件	X	○	○	○	○	○
定影部件	X	○	○	○	○	○
扫描仪部件 - CCD ( 如果有 )	X	X	○	○	○	○
扫描仪部件 - 其它 ( 如果有 )	X	○	○	○	○	○
印刷电路板部件 (PBA)	X	○	○	○	○	○
墨粉	○	○	○	○	○	○
滚筒	○	○	○	○	○	○

○：表示该有毒有害物质在该部件所有均质材料中的含量均在 SJ/T 11363-2006 标准规定的限量要求以下。

X：表示该有毒有害物质至少在该部件的某一均质材料中的含量超出 SJ/T 11363-2006 标准规定的限量要求。

以上表为目前本产品含有有毒有害物质的信息。本信息由本公司的配套厂家提供，经本公司审核后而做成，本产品的部分部件含有有毒有害物质，这些部件是在现有科学技术水平下暂时无可替代物质，但三星电子将会一直为满足 SJ/T 11363-2006 标准而做不懈的努力。

# Copyright

© 2012 Samsung Electronics Co., Ltd. All rights reserved.

This user's guide is provided for information purposes only. All information included herein is subject to change without notice.

Samsung Electronics is not responsible for any direct or indirect damages, arising from or related to use of this user's guide.

- Samsung and the Samsung logo are trademarks of Samsung Electronics Co., Ltd.
- Microsoft, Windows, Windows Vista, Windows 7, and Windows Server 2008 R2 are either registered trademarks or trademarks of Microsoft Corporation.
- Microsoft, Internet Explorer, Excel, Word, PowerPoint, and Outlook are either registered trademarks or trademarks of Microsoft Corporation in the United States and other countries.
- Google, Picasa, Google Docs, Android and Gmail are either registered trademarks or trademarks of Google Inc.
- Google Cloud Print is a trademark of Google Inc.
- iPad, iPhone, iPod touch, TrueType, Mac and Mac OS are trademarks of Apple Inc., registered in the U.S and other countries.
- AirPrint and the AirPrint logo are trademarks of Apple Inc.
- True, LaserWriter, and Macintosh are trademarks of Apple Computer, Inc.
- All other brand or product names are trademarks of their respective companies or organizations.

Refer to the '**LICENSE.txt**' file in the provided CD-ROM for the open source license information.

**REV. 0.70**