

QUICK START GUIDE

EI-MN930

Image Stamp

Printed in Korea
A00558 Rev.1.0
SEA Type 12/2016

SAMSUNG

Inserting photo paper

1. Slide the Paper slot cover (b) to open it (E).
2. Open the package of photo paper.
3. Place the Color tuning sheet (i) with the barcode side facing downwards.
4. Place the photo paper with the white side facing upwards on the paper slot (C).
You can insert up to 10 pieces of photo paper.
The Color tuning sheet (i) will be automatically ejected before printing.



- The barcode on the Color tuning sheet (i) has the information that is read by the photo printer to calibrate colors for optimal print quality for the inserted paper. The Color tuning sheet (i) also cleans the printer head. Use the Color tuning sheet (i) included in packs of photo paper before you have to replace it when photo quality is reduced.
- Place photo paper and the included Color tuning sheet (i) in the paper slot. If you use photo paper from different packages together, the photo quality may be reduced due to the different information of the Color tuning sheet (i).
- When there are fingerprints or foreign materials on the printing side of the photo paper, the photo quality may be reduced.
- Use only Samsung-approved photo paper. Third-party photo paper may cause printing problems or photo printer malfunctions.
- You can purchase photo paper from www.samsung.com or your local Samsung retailer.

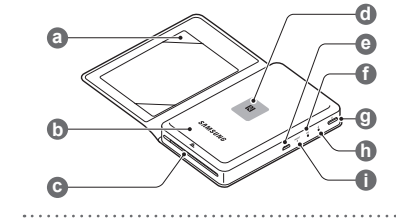
5. Slide the Paper slot cover (b) with the grooves aligned to close it (D).

WARNING! This product contains chemicals known to the State of California to cause cancer, birth defects, or other reproductive harm. For more information, please call 1-800-SAMSUNG (726-7864).

English

Copyright © 2016 Samsung Electronics America, Inc.
Other marks are the property of their respective owners.

- Please read this guide before using the device to ensure safe and proper use.
- Images may differ in appearance from the actual product. Content is subject to change without prior notice. You can access the full user manual for more information. Visit www.samsung.com to view device information, the user manual, and more.
- Before using the photo printer, make sure it is compatible with your device.
- Your consumer rights are governed by the law of the country in which you purchased the product. Please contact your service provider for more information.



Preparing your device for photo printing

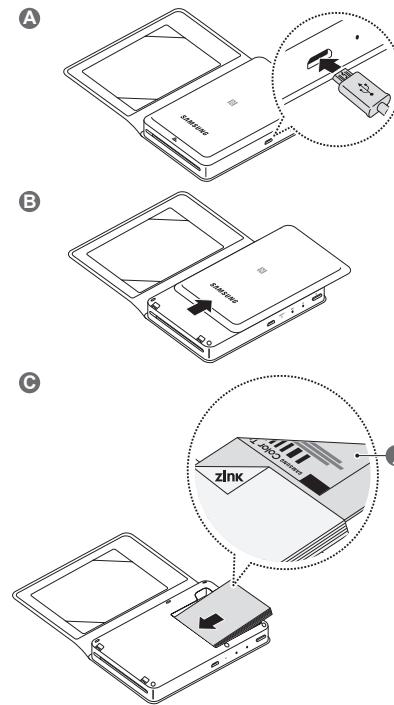
Printing tips and precautions

- You can print up to 25 photos when the battery is fully charged. The maximum number of photos you can print on a full charge varies depending on the resolution of your photos and the printing environment.
- The printing time may increase when you print more than 6 photos in a row.
- Do not manually pull out the paper during printing.
- Do not forcefully remove the paper in the event of a paper jam. Restart the printer and the paper will be ejected automatically.
- The colors of the printed photo and the image on the screen may differ.
- It is recommended to have ID photos taken at a photo studio because the photo quality and resolution are important for ID photos.
- If lines appear on a photo or the photo quality is reduced, print the Color tuning sheet (i) 3 or 5 times continuously.
- Do not drop or expose the photo printer to impacts before printing. The photo quality may be reduced.
- Do not block the Output slot (C) during printing. Photos may bend or the printer may malfunction.
- Comply with the precautions on photo paper packages.
- Photos are printed in the same orientation as they are displayed on the mobile device. If you want to print a photo taken in landscape mode, rotate your mobile device to display the photo in landscape orientation. Activate your mobile device's screen rotation feature if it is disabled.
- You can print up to 10 photos in a row.

Printing conveniently (Tag & Print)

When you have installed the **Image Stamp** app on your mobile device, you can place your mobile device on the photo printer to conveniently print photos.

1. Turn the photo printer on and activate your mobile device's NFC feature.
If your mobile device's available NFC modes are NFC card mode or R/W P2P, select R/W P2P.



2. On your mobile device, display the screen or image you want to print and place your mobile device on the photo printer with the NFC area on the back of your mobile device touching the printer's NFC area (E).
A countdown timer will appear on the mobile device when the connection completes and the current screen of the mobile device is printed when the timer reaches zero.
Tap **Cancel** on the mobile device before the timer reaches zero to cancel printing. If a photo is being printed, it cannot be cancelled. When multiple photos are being printed, you can select photos from the printing list to cancel.

Printing photos

1. Press and hold the **Power** button (G) to enter connection standby mode.
The Device indicator light (H) will turn red and the photo printer will wait for the mobile device to connect.

Device indicator light color	Status
Blue	Connecting to the mobile device
Red	Waiting for the mobile device to attempt a connection

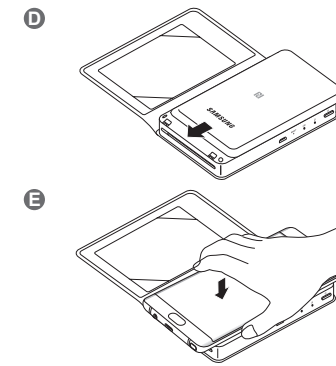
2. On the Apps screen of your mobile device, tap **Image Stamp**.
3. Select a photo to print and swipe to the left or right on the screen to select a layout.
Tap **Edit** to edit the photo or tap **Pen** to write or draw with your finger or the S Pen.
4. Tap **Print** to print the photo.
5. Select the photo printer from the printer list.
The connection will complete and the photo will be printed.

Industry Canada Statement

This device complies with Industry Canada licence-exempt RSS standard(s).

Operation is subject to the following two conditions:

(1) this device may not cause interference, and (2) this device must accept any interference, including interference that may cause undesired operation of the device.



Device layout

a	Photo holder	f	Battery indicator light
b	Paper slot cover	g	Power button
c	Output slot	h	Device indicator light
d	NFC antenna	i	Reset hole
e	Charger port	j	Color tuning sheet

Preparing to print

Charging the battery

Charge the photo printer before using it for the first time or when it has been unused for extended periods.

1. Connect the photo printer to a charger (A).
2. When the photo printer is fully charged, remove it from the charger.

Safety information

Read all safety information before using the device to ensure safe and proper use.

- The photo printer contains magnets. The American Heart Association (US) and the Medicines and Healthcare Products Regulatory Agency (UK) both warn that magnets can affect the operation of implanted pacemakers, cardioverters, defibrillators, insulin pumps or other electro medical devices (collectively, "Medical Device") within the range of 15 cm (6 inches). If you are a user of any of these Medical Devices, DO NOT USE THE PHOTO PRINTER UNLESS YOU HAVE CONSULTED WITH YOUR PHYSICIAN.
- Use only charging devices and batteries approved by Samsung. Samsung accessories are designed for your device to maximize battery life. Using other accessories may invalidate your warranty and may cause damage.
- Do not touch the device with wet hands.
- Do not drop or cause an impact to the charger or the device.
- The device can be used in locations with an ambient temperature of 0 °C (32 °F) to 35 °C (95 °F). You can store the device at an ambient temperature of 20 °C (68 °F) to 50 °C (122 °F). Using or storing the device outside of the recommended temperature ranges may damage the device or reduce the battery's lifespan.
- Do not allow children or animals to chew or suck the device.
- Do not disassemble, modify, or repair your device.
- If the device is dirty, wipe it gently with a soft cloth. Do not use chemicals or strong detergents. Doing so may discolor or corrode the outside the device.
- Do not expose photo paper to humid environments for extended periods. Store photo paper in a dry place away from excessive heat or cold.

FCC Part 15.19

This device complies with part 15 of the FCC Rules. Operation is subject to the following two conditions: (1) This device may not cause harmful interference, and (2) this device must accept any interference received, including interference that may cause undesired operation.

Battery indicator light

Color	Status
Red	Charging
Green	Fully charged



Charging head for plugging USB cable into wall outlet is not included. Use only Samsung charging devices rated with an output (voltage of 5V) and an output current of over [1 Amp] (sold separately). Samsung accessories are designed for your device to maximize battery life. Using other accessories may invalidate your warranty and may cause damage.



- You can charge the photo printer using the charger (sold separately).
- The charging time may vary depending on the charger specification.
- The charger should remain close to the electric socket and be easily accessible while charging.

Installing the Image Stamp app

To use the photo printer, download and install the **Image Stamp** app on your mobile device. You can download the **Image Stamp** app from the **Play Store**.



- If the **Image Stamp** app is not installed on your mobile device, you will be redirected to the app download screen when you place your mobile device on the photo printer.
- The **Image Stamp** app is compatible with mobile devices running Android 6.0 or higher and with HD resolution (1280x720) or higher.

Turning the photo printer on and off

Press and hold the **Power** button (G) to turn the photo printer on or off. When you turn on the photo printer for the first time, it will enter Wi-Fi connection standby mode.



If the photo printer is frozen or unresponsive, insert a pin into the reset hole (I). Ensure that the pin is perpendicular to the reset hole. Otherwise, the photo printer may be damaged.

FCC Part 15.21

Any changes or modifications (including the antennas) to this device that are not expressly approved by the manufacturer may void the user's authority to operate the equipment.

Recycling Direct

Dispose of your mobile device and batteries in accordance with local regulations. In some areas, the disposal of these items in household or business trash may be prohibited. Help us protect the environment - recycle!

Never dispose of batteries in a fire because they may explode.

To find the nearest recycling location, go to any of the following:

www.samsung.com/recyclingdirect or call, 1-877-278-0799.

For battery recycling,
go to call2recycle.org
or call 1-800-822-8837.



Samsung Electronics America, Inc

85 Challenger Road,
Ridgefield Park, New Jersey, 07660
Phone: 1-800-SAMSUNG (726-7864)

Hardware spec

Item	Description
Input power	5W (DC5V / 1A)
Battery	700mAh, 2Cell
Charging time	About 90minute
Normal operating voltage	DC 8.0V
Power consumption	19.2W (Battery BV / 2.4A)
WiFi	802.11b/g/n (2.412GHz ~ 2.462GHz)
Dimension	85.1 * 139.6 * 26.9mm
Weight	280g
Operating temperature	5° ~ 40°, 70% under

This device was tested for typical use with the back of the equipment kept 0.5 cm from the body.