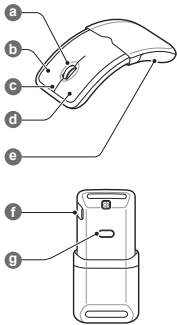


# QUICK START GUIDE

EJ-MT820I



Printed in Korea  
A00448 Rev.1.0  
E Type 04/2015



Copyright © 2015 Samsung Electronics

## English

Bluetooth® is a registered trademark of Bluetooth SIG, Inc. worldwide.


- Please read this manual before using the device to ensure safe and proper use.
- Images may differ in appearance from the actual product. Content is subject to change without prior notice. You can access the full user manual for more information. Visit [www.samsung.com](http://www.samsung.com) to view device information, the user manual, and more.
- The mouse is compatible with mobile devices and computers running Android 4.1 or higher or Windows 7 or higher.

### Device layout

a	Scroll wheel	e	Sliding cover
b	Right button	f	Charging port
c	Notification light	g	CONNECT button
d	Left button		


### Charging the battery

Before using the mouse for the first time, you must charge the battery.  
Open the charging port cover and connect the mouse to a computer or the USB power adaptor via the USB cable.

-  You can charge the device using the charger (sold separately).
- The charger should remain close to the electric socket and easily accessible while charging.
- The socket-outlet shall be installed near the equipment and shall be easily accessible.

### Turning the mouse on and off

Turn on the mouse by sliding the cover open. Close the cover to turn it off.

-  When you turn on the mouse for the first time, it enters Bluetooth pairing mode.

### Connecting to another device

1. Press and hold the CONNECT button for more than three seconds.  
The notification light flashes red, green, and blue and then the mouse enters Bluetooth pairing mode.
2. On your other device, activate the Bluetooth feature and tap **Samsung Bluetooth Mouse** Slide from the list.

### Safety information

Read all safety information before using the device to ensure safe and proper use. To view the full safety information, refer to the Samsung website.

**Use manufacturer-approved batteries, chargers, accessories, and supplies**

**Do not touch the device with wet hands**

**Do not drop or cause an impact to the charger or the device**


**Do not store your device in very hot or very cold areas. It is recommended to use your device at temperatures from 5°C to 35°C**


**Prevent the multipurpose jack and the small end of the charger from contact with conductive materials, such as liquids, dust, metal powders, and pencil leads**

**Do not allow children or animals to chew or suck the device**

**Do not disassemble, modify, or repair your device**

### Correct disposal

-  This marking on the product, accessories or literature indicates that the product and its electronic accessories (e.g. charger, headset, USB cable) should not be disposed of with other household waste.  
This product is RoHS compliant.

-  This marking on the battery, manual or packaging indicates that the batteries in this product should not be disposed of with other household waste.

### Removing the battery

- To remove the battery, you **must** visit an authorised service centre with the provided instructions.
- For your safety, you **must not attempt to remove** the battery. If the battery is not properly removed, it may lead to damage to the battery and device, cause personal injury, and/or result in the device being unsafe.
- Samsung does not accept liability for any damage or loss (whether in contract or tort, including negligence) which may arise from failure to precisely follow these warnings and instructions, other than death or personal injury caused by Samsung's negligence.

1. Turn the mouse over and remove the protective tape from the bottom of the mouse.
2. Loosen and remove the two screws.
3. From the side of the sliding cover, use a flat-edged tool to pry open the bottom part of the cover.
4. Slide the cover open. Then, loosen and remove the three screws on the metal connection.
5. Lift the metal connection plate off the two locating pins and remove the top part of the sliding cover.
6. Turn the mouse back over and from the front of the mouse use a flat-edged tool to pry open the button panel.
7. Loosen and remove the six screws along the border of the mouse.
8. Pry open the cover to gain access to the circuit board.
9. Use wire cutters to cut the wires between the battery and the circuit board.
10. Pry the battery cover loose from the two connection points and remove the battery.

SAMSUNG  
ELECTRONICS



### Declaration of Conformity

#### Product details

For the following  
Product:  
Model(s) : EJ-MT820I

#### Declaration & Applicable standards

We hereby declare, that the product above is in compliance with the essential requirements of the R&TTE Directive (1999/5/EC) by application of:

EN 301 489-1 V1.9.2	EN 301 489-3 V1.4.1
EN 301 489-17 V2.2.1	EN 55013 : 2001 / A1 : 2003 / A2 : 2006
EN 55020 : 2007 / A11 : 2011	EN 300 328 V1.8.1
EN 302 291-1 V1.1.1	EN 302 291-2 V1.1.1
EN 60950-1 : 2006 + A11 : 2009 + A1 : 2010 + A12 : 2011	

and the Directive (2011/65/EU) on the restriction of the use of certain hazardous substances in electrical and electronic equipment by application of EN 50581:2012.

The conformity assessment procedure referred to in Article 10 and detailed in Annex[IV] of Directive 1999/5/EC has been followed with the involvement of the following Notified Body(ies):  
TÜV SÜD BABT, Octagon House, Concorde Way, Fareham, Hampshire, PO15 5RL, UK\*  
Identification mark: 0168

#### Representative in the EU

Samsung Electronics Euro QA Lab.  
Blackbushe Business Park  
Saxony Way, Yateley, Hampshire  
Yateley, Hampshire, GU46 6GG, UK



(YEAR TO  
BEGIN AFFIXING  
CE MARKING 2015

*Stephen Colclough*

2014.XX.XX Stephen Colclough / EU Representative  
(Place and date of issue) (Name and signature of authorised person)

\* This is not the address of Samsung Service Centre. For the address or the phone number of Samsung Service Centre, see the warranty card or contact the retailer where you purchased your product.

FCC ID: A3LEJMT820I

### FCC Part 15.19

This device complies with part 15 of the FCC Rules. Operation is subject to the following two conditions: (1) This device may not cause harmful interference, and (2) this device must accept any interference received, including interference that may cause undesired operation.

### FCC Part 15.21

Any changes or modifications (including the antennas) to this device that are not expressly approved by the manufacturer may void the user's authority to operate the equipment.

IC: 649E-EJMT820I

This device complies with Industry Canada licence-exempt RSS standard(s).  
Operation is subject to the following two conditions: (1) this device may not cause interference, and (2) this device must accept any interference, including interference that may cause undesired operation of the device.

Le présent appareil est conforme aux CNR d'Industrie Canada applicables aux appareils radio exempts de licence.  
L'exploitation est autorisée aux deux conditions suivantes : (1) l'appareil ne doit pas produire de brouillage, et (2) l'utilisateur de l'appareil doit accepter tout brouillage radioélectrique subi, même si le brouillage est susceptible d'en compromettre le fonctionnement.