

SAMSUNG

EO-SG928

User Manual

Table of Contents

Read me first

Getting started

- 4 Package contents
- 5 Device layout
- 6 Charging the battery
- 7 Turning the Bluetooth speaker on or off
- 8 Notification light identification

Using the Bluetooth speaker

- 9 Bluetooth
- 10 Connecting to another device
- 12 Connecting additional devices
- 13 Reconnecting or disconnecting device
- 14 Using the Bluetooth speaker
- 15 Using the ultra high quality Bluetooth (UHQ-BT) feature
- 16 Sharing audio via Dual Sound

Appendix

- 17 Troubleshooting
- 19 Removing the battery

Read me first

Please read this manual before using the device to ensure safe and proper use.

- Images may differ in appearance from the actual product. Content is subject to change without prior notice.
- Before connecting the Bluetooth speaker to your other device, make sure the other device is compatible with the Bluetooth speaker.

Instructional icons



Warning: situations that could cause injury to yourself or others



Caution: situations that could cause damage to your device or other equipment



Notice: notes, usage tips, or additional information

Getting started

Package contents

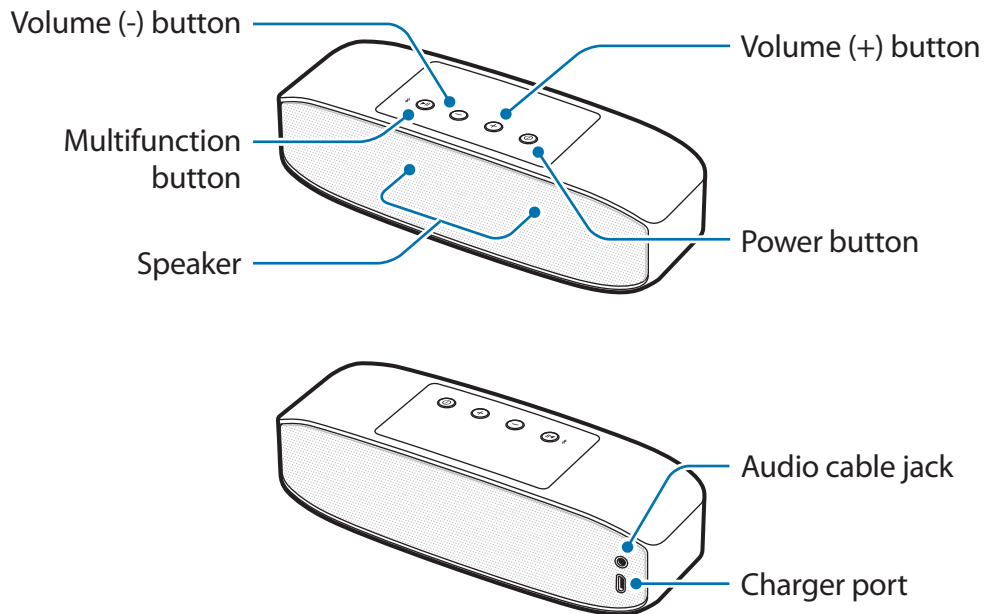
Check the product box for the following items:

- Bluetooth speaker
- Quick start guide



- The items supplied with the device and any available accessories may vary depending on the region or service provider.
- The supplied items are designed only for this device and may not be compatible with other devices.
- Appearances and specifications are subject to change without prior notice.
- You can purchase additional accessories from your local Samsung retailer. Make sure they are compatible with the device before purchase.
- Use only Samsung-approved accessories. Using unapproved accessories may cause the performance problems and malfunctions that are not covered by the warranty.
- Availability of all accessories is subject to change depending entirely on manufacturing companies. For more information about available accessories, refer to the Samsung website.

Device layout



Buttons and functions

Name	Function
Power button	<ul style="list-style-type: none"> • Press and hold to turn the Bluetooth speaker on or off.
Multifunction button	<ul style="list-style-type: none"> • Press and hold for approximately three seconds to enter Bluetooth pairing mode. • Press to reconnect devices when the connection is lost. • Press to play or pause multimedia files.
Volume buttons	<ul style="list-style-type: none"> • Press to adjust the volume during media playback. • Press and hold the Volume (+) button to skip to the next file during media playback. • Press and hold the Volume (-) button to skip to the previous file during media playback.

Charging the battery

This Bluetooth speaker has a built-in battery. Before using the Bluetooth speaker for the first time or when the battery has been unused for extended periods, you must charge the battery.



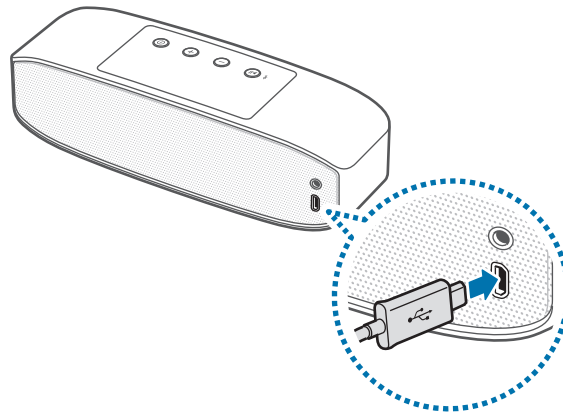
Use only Samsung-approved chargers (5 V/2 A or higher) and cables. Unapproved chargers or cables can cause the battery to explode or damage the Bluetooth speaker.



If the battery is completely discharged, the Bluetooth speaker cannot be turned on immediately when the charger is connected. Allow a depleted battery to charge for a few minutes before turning on the Bluetooth speaker.

Connect the Bluetooth speaker to the USB power adaptor via the USB cable. Plug the USB power adaptor into an electric socket.

- The notification light turns red while the Bluetooth speaker is being charged. The notification light turns green when charging is complete.



Connecting the charger improperly may cause serious damage to the Bluetooth speaker. Any damage caused by misuse is not covered by the warranty.



- The Bluetooth speaker can be used while it is charging, but it may take longer to fully charge the battery.
- While charging, the Bluetooth speaker may heat up. This is normal and should not affect the Bluetooth speaker's lifespan or performance. If the battery gets hotter than usual, the charger may stop charging.
- If the Bluetooth speaker is not charging properly, take the Bluetooth speaker and the charger to a Samsung Service Centre.

After fully charging, first unplug the USB cable from the Bluetooth speaker, and then unplug it from the computer or the electric socket.



- To save energy, unplug the charger when not in use. The charger does not have a power switch, so you must unplug the charger from the electric socket when not in use to avoid wasting power. The charger should remain close to the electric socket and easily accessible while charging.
- The socket-outlet shall be installed near the equipment and shall be easily accessible.

Turning the Bluetooth speaker on or off

Press and hold the Power button to turn the Bluetooth speaker on or off.



- Follow all posted warnings and directions from authorised personnel in areas where the use of wireless devices is restricted, such as aeroplanes and hospitals.

Notification light identification

The notification light alerts you to the Bluetooth speaker's status.

Status	Colour
Power on	• Flashes green three times
Bluetooth pairing mode	• Flashes red and blue
Connected via Bluetooth	• Continuously on blue
Charging	• Continuously on red
Fully charged	• Continuously on green
Power off	• Flashes red three times
During use or in sleep mode	• Off (If the remaining battery power is less than 10%, the light continuously flashes red.)



- If the notification light does not work as described, disconnect the charger from the Bluetooth speaker and reconnect it.
- The notification light may work differently depending on the connected device.

Using the Bluetooth speaker

Bluetooth

About Bluetooth

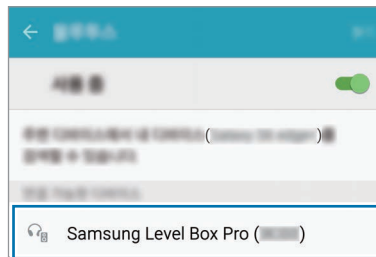
Bluetooth is a wireless technology standard that uses a 2.4 GHz frequency to connect to various devices over short distances. It can connect and exchange data with other Bluetooth enabled devices, such as mobile devices, computers, printers, and other digital home appliances, without connecting via cables.

Notices for using Bluetooth

- To avoid problems when connecting your Bluetooth speaker to another device, place the devices close to each other.
- Ensure that your Bluetooth speaker and the other Bluetooth device are within the Bluetooth connection range (10 m). The distance may vary depending on the environment the devices are used in.
- Ensure that there are no obstacles between the Bluetooth speaker and a connected device, including human bodies, walls, corners, or fences.
- Do not touch the Bluetooth antenna of a connected device.
- Bluetooth uses the same frequency as some industrial, scientific, medical, and low power products and interference may occur when making connections near these types of products.
- Some devices, especially those that are not tested or approved by the Bluetooth SIG, may be incompatible with your Bluetooth speaker.
- Do not use the Bluetooth feature for illegal purposes (for example, pirating copies of files or illegally tapping communications for commercial purposes).

Connecting via Bluetooth

- 1 Bluetooth speaker** Press and hold the Power button to turn on the Bluetooth speaker.
- 2 Bluetooth speaker** Press and hold the Multifunction button for approximately three seconds to enter Bluetooth pairing mode.
When you turn on the Bluetooth speaker for the first time, it automatically enters Bluetooth pairing mode.
- 3 Other device** Activate the Bluetooth feature and search for Bluetooth devices.
For more information, refer to the other device's user manual.
- 4 Other device** Tap **Samsung Level Box Pro (0000)** from the list of available devices.



- The PIN for the Bluetooth speaker is the four-digit number in parenthesis displayed on the other device's Bluetooth settings screen. The number differs depending on the Bluetooth speaker.
- Once devices are paired, recently connected devices automatically connect to your Bluetooth speaker whenever you turn it on.
- If the Bluetooth connection fails or the other device cannot locate the Bluetooth speaker, remove the device's information from the other device's list. Then, try to connect again.
- The Bluetooth connection range and sound quality may vary depending on the connected devices.

Using the Bluetooth speaker

Various features are available when the Bluetooth speaker is connected to another device.



The following descriptions are based on a Samsung mobile device running Android 5.0. Some features may differ or may not work on your Bluetooth speaker depending on the connected device.

Playing multimedia files

The Bluetooth speaker can control media playback and the volume of connected devices.



- The Bluetooth speaker may not be able to control media playback when connected to some devices.
- When the Bluetooth speaker and another device are connected via an audio cable, the Bluetooth speaker can control only the volume.

Playing and pausing a multimedia file

Press the Multifunction button. The most recently-played music file will play automatically in the default music app installed on the connected device.

During playback, press the Multifunction button to pause playback. To resume playback, press the Multifunction button again.



When two connected devices are simultaneously playing multimedia files, the Bluetooth speaker will stream from the device that started playing a file first. When you pause the currently-playing file, the file playing on the other device will play automatically.

Skipping to the next multimedia file

Press and hold the Volume (+) button to skip to the next file during playback.

Skipping to the previous multimedia file

Press and hold the Volume (-) button to skip to the previous file during playback.

Adjusting the volume

Press the Volume button.

Using Samsung Level

On the connected device, download the Samsung Level app from Google Play Store or Galaxy Apps. With the app, you can check the remaining battery power and adjust the volume. You can also set the Bluetooth speaker to notify you via voice notification when you have notifications on the connected device. For more information, refer to the app's help menu.



The Samsung Level app is compatible with Samsung mobile devices running Android 4.2.2 or higher. Some features may differ or may not work on your Bluetooth speaker depending on the connected device or the operating system.

Using the ultra high quality Bluetooth (UHQ-BT) feature

If a connected mobile device supports the ultra high quality Bluetooth (UHQ-BT) feature, you can listen to UHQ audio using the Bluetooth speaker. Use the Samsung Level app on the connected mobile device to deactivate the UHQ-BT feature. For more information, refer to the Samsung Level app's help information.



- When you use the Bluetooth feature to listen to UHQ audio, the Bluetooth speaker's battery efficiency and the maximum Bluetooth range (10 m) may be reduced.
- Visit www.samsung.com to view the product specifications for the connected mobile device to confirm that it supports the UHQ-BT feature.

Sharing audio via Dual Sound

Share audio that you are listening to on your Bluetooth speaker with other Bluetooth speakers that support the Dual Sound feature. You can connect two Bluetooth speakers to play the same audio or to use them as a two-channel speaker.

Ensure that the Bluetooth speaker that you want to share audio with is turned on.



- Your Bluetooth speaker must be connected to a mobile device, such as a smartphone or tablet. If your Bluetooth speaker is connected to more than one mobile device, you cannot share audio with other Bluetooth speakers.
- If the Bluetooth speakers are more than five metres apart while sharing audio, the signal quality may be poor.
- If the other Bluetooth speaker is turned off during sharing, it will be disconnected from your Bluetooth speaker. When you turn it on again, it will automatically reconnect to the mobile device that it was connected to before sharing audio.
- While sharing audio, the voice notification feature will be disabled.
- Visit www.samsung.com to view the product specifications for the other Bluetooth speaker to confirm that it supports the Dual Sound feature.

Using the Multifunction and Volume buttons

You can listen to audio through two Bluetooth speakers simultaneously. Press and hold the Multifunction button and the Volume (-) button on the other Bluetooth speaker for approximately one second to enable it to be located.

Then, press and hold the Multifunction button and the Volume (+) button on your Bluetooth speaker for approximately one second. The audio you are currently listening to will be shared with the other Bluetooth speaker.

Using Samsung Level

On the connected mobile device, launch the Samsung Level app to share audio with other Bluetooth speaker. For more information, refer to the app's help information.

Appendix

Troubleshooting

Before contacting a Samsung Service Centre, please attempt the following solutions. Some situations may not apply to your Bluetooth speaker.

Your Bluetooth speaker does not turn on

When the battery is completely discharged, your Bluetooth speaker will not turn on. Charge the battery completely before turning on the Bluetooth speaker.

Your Bluetooth speaker freezes

If the Bluetooth speaker freezes or hangs, try to resolve it by turning off the Bluetooth speaker and then turning it on again.

If the Bluetooth speaker is still unresponsive, end the Bluetooth connection and reconnect it. To do this, press the Multifunction button for approximately three seconds. When the Bluetooth speaker enters Bluetooth pairing mode, connect the devices again, and then check the operation of the Bluetooth speaker.

If the problem is still not resolved, contact a Samsung Service Centre.

The battery does not charge properly (For Samsung-approved USB cables and chargers)

Ensure that the USB cable or the charger is connected properly.

If the problem is still not resolved, contact a Samsung Service Centre.

Another Bluetooth device cannot locate your Bluetooth speaker

- Ensure that your Bluetooth speaker is in Bluetooth pairing mode.
- Restart your Bluetooth speaker and search for the Bluetooth speaker again.
- Ensure that your Bluetooth speaker and the other Bluetooth device are within the Bluetooth connection range (10 m).

If the tips above do not solve the problem, contact a Samsung Service Centre.

Your Bluetooth speaker cannot connect to another Bluetooth device

- Ensure that your Bluetooth speaker and the other Bluetooth device are within the maximum Bluetooth range (10 m).
- On the device you want to connect with, disconnect all paired devices and try to connect again.

Bluetooth connection is often disconnected

- If there are obstacles between the devices, the operating distance may be reduced.
- Ensure that your Bluetooth speaker and the other Bluetooth device are within the maximum Bluetooth range (10 m).
- When using the Bluetooth speaker with other Bluetooth devices, the connection may be affected by electromagnetic waves. Use the Bluetooth speaker in environments with fewer wireless devices present.

The Bluetooth speaker works differently as described in the manual

- Available functions may differ depending on the connected device.
- Some features cannot be used when two devices are connected with the Bluetooth speaker at the same time.

The battery depletes faster than when first purchased

- When you expose the Bluetooth speaker or the battery to very cold or very hot temperatures, the useful charge may be reduced.
- The battery is consumable and the useful charge will get shorter over time.

Removing the battery

- To remove the battery, you **must** visit an authorised service centre with the provided instructions.
- For your safety, you **must not attempt to remove** the battery. If the battery is not properly removed, it may lead to damage to the battery and device, cause personal injury, and/or result in the device being unsafe.
- Samsung does not accept liability for any damage or loss (whether in contract or tort, including negligence) which may arise from failure to precisely follow these warnings and instructions, other than death or personal injury caused by Samsung's negligence.

1 Remove the rubber cover from the bottom of the Bluetooth speaker.

2 Loosen and remove the four screws and open the cover.



Be careful not to damage your fingernails when you remove the cover.

3 Remove the batteries.

Declaration of Conformity

Product details

For the following

Product :

Model(s) :



Declaration & Applicable standards

We hereby declare, that the product above is in compliance with the essential requirements of the R&TTE Directive (1999/5/EC) by application of:

SAFETY

SAR

EMC

RADIO

and the Directive (2011/65/EU) on the restriction of the use of certain hazardous substances in electrical and electronic equipment by application of EN 50581:2012.

Representative in the EU

Samsung Electronics Euro QA Lab.
Blackbushe Business Park
Saxony Way, Yateley, Hampshire
GU46 6GG, UK
2015.XX.XX

A handwritten signature in black ink, appearing to read 'S Colclough'.

Stephen Colclough / EU Representative

(Place and date of issue)

(Name and signature of authorised person)

* This is not the address of Samsung Service Centre. For the address or the phone number of Samsung Service Centre, see the warranty card or contact the retailer where you purchased your product.

Copyright

Copyright © 2015 Samsung Electronics

This manual is protected under international copyright laws.

No part of this manual may be reproduced, distributed, translated, or transmitted in any form or by any means, electronic or mechanical, including photocopying, recording, or storing in any information storage and retrieval system, without the prior written permission of Samsung Electronics.

Trademarks

- SAMSUNG and the SAMSUNG logo are registered trademarks of Samsung Electronics.
- Bluetooth® is a registered trademark of Bluetooth SIG, Inc. worldwide.
- All other trademarks and copyrights are the property of their respective owners.

WARNING & SAFETY INFORMATION

Safety Symbols



- When encountering this symbol in the manual, you must follow these recommendations to avoid irreparable damage to your car, system or connected devices or to avoid accidents with injuries or death.

IC Information

This device complies with Industry Canada licence-exempt RSS standard(s). Operation is subject to the following two conditions:
(1) this device may not cause interference, and
(2) this device must accept any interference, including interference

Le présent appareil est conforme aux CNR d'Industrie Canada applicables aux appareils radio exempts de licence.

L'exploitation est autorisée aux deux conditions suivantes :

- (1) l'appareil ne doit pas produire de brouillage, et
- (2) l'utilisateur de l'appareil doit accepter tout brouillage radioélectrique subi, même si le brouillage est susceptible d'en compromettre le fonctionnement.

The antenna(s) used for this device must be installed to provide a separation distance of at least 20 cm from all persons and must not be co-located or operating in conjunction with any other antenna or transmitter.

FCC Information

This device complies with part 15 of the FCC Rules. Operation is subject to the following two conditions:

1. This device may not cause harmful interference, and
2. This device must accept any interference received, including interference that may cause undesired operation.

FCC notification to users

This equipment has been tested and found to comply with the limits for a CLASS B digital device, pursuant to Part 15 of the FCC Rules. These limits are designed to provide reasonable protection against harmful interference when the equipment is operated in a commercial environment. This equipment generates, uses, and can radiate radio frequency energy and, if not installed and used in accordance with the instructions, may cause harmful interference to radio communications. However, there is no guarantee that interference will not occur in a particular installation. If this equipment does cause harmful interference, the user is encouraged to try to correct the interference by consulting with a dealer or an experienced technician for technical assistance.

Any changes or modifications to the equipment not expressly approved by the party responsible for compliance could void user's authority to operate the equipment.