

QUICK START GUIDE

SM-R770



Printed in Korea
GH68-46932A Rev.1.0
English (EU). 09/2016

SAMSUNG

If your device is frozen and unresponsive, press and hold the Power key for more than 7 seconds to restart it.

Declaration of Conformity

Samsung Electronics declares that this device complies with the essential requirements and relevant provisions of Directive 1999/5/EC.

Go to www.samsung.com/mobile_doc to view the Declaration of Conformity.

CE 0168

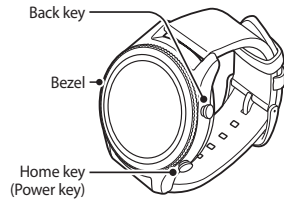
Samsung Electronics (UK) Ltd, Euro QA Lab.
Blackbushe Business Park, Saxony Way, Yateley,
Hampshire. GU46 6GG, United Kingdom

Some content may differ from your device depending on the region, service provider, or software version, and is subject to change without prior notice.

Copyright © 2016 Samsung Electronics

Device layout

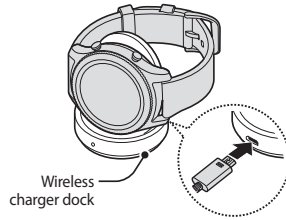
To turn on the Gear, press and hold the Power key for a few seconds.



2

Charging the battery

Before using the device for the first time, you must charge the battery.



The charger should remain close to the electric socket and be easily accessible while charging.

3

Connecting the Gear to a mobile device

To connect your Gear and mobile device, install the Samsung Gear app on the mobile device. Depending on your device, you can download the Samsung Gear app from the following places:

- Samsung Android devices: **Galaxy Apps**, apps.samsung.com/gear
- Other Android devices: **Play Store**, apps.samsung.com/gear

Gear

- 1 Turn on the Gear.

4

Mobile device

- 2 Launch **Samsung Gear**.
If necessary, update the Samsung Gear app to the latest version.
- 3 Tap **CONNECT TO GEAR**.
- 4 Tap **OK** when the Bluetooth activation request window appears.
- 5 Follow the on-screen instructions to complete the connection.

When the devices are connected, an on-screen tutorial will appear on the Gear's screen.



5



- Connection methods may vary depending on your mobile device and software version.
- Supported mobile devices and features may vary depending on your region, service provider, and device manufacturer. Visit www.samsung.com to see a list of compatible devices.

6

Using the Gear without a mobile device

You can use the Gear without connecting it to a mobile device. Visit www.samsung.com to view legal notices provided when setting Without phone connection mode for the first time.

For more information, refer the user manual.

7

Turning the screen on and off

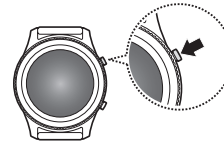
To turn on the screen, rotate the bezel. Or, press the Home key or the Back key.
To turn off the screen, cover it with your palm.



8

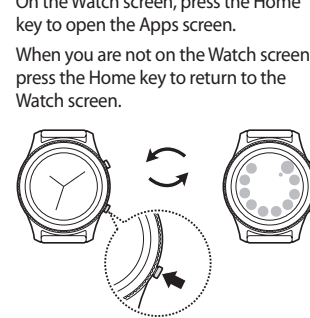
Using the bezel

Rotate the bezel to scroll through the screens or to highlight items.



9

Returning to the previous screen



10

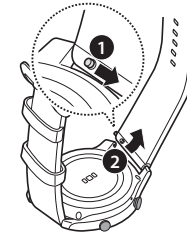
Switching between the Watch and Apps screen

On the Watch screen, press the Home key to open the Apps screen.
When you are not on the Watch screen, press the Home key to return to the Watch screen.

11

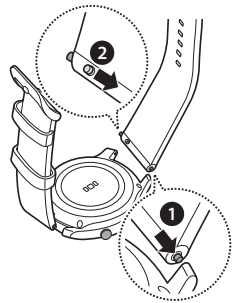
Replacing the strap

Slide the strap's spring bar inwards (1) and pull the strap away from the Gear's body (2).



12

Insert one end of the spring bar into the Gear's lug (1), slide the spring bar inwards (2), and connect the strap.



13

Accessing more information

To view the full user manual, open the Apps screen of the mobile device, tap **Samsung Gear** → **Help** → **User manual**.

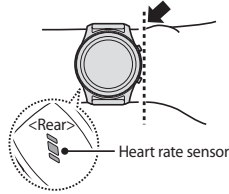
Visit www.samsung.com to view device information, the user manual, and more.

- The method for accessing the user manual from the Samsung Gear app may vary depending on your device.
- The user manual may not be available depending on the web browser or service provider.

14

Notice for measuring the heart rate

When measuring your heart rate, wear the Gear snugly on your arm above your wrist as shown in the figure below. Do not fasten the Gear too tightly.



15

- The accuracy of the heart rate sensor can be affected depending on the user's movements, personal physiology, and the measurement conditions and surroundings. Take heart rate measurements when you are seated and relaxed.
- Do not look directly at the heart rate sensor's lights. Doing so may impair your vision.
- If your device becomes hot to the touch, please remove it until it cools. Exposing skin to a hot surface of the device for a long time may cause skin burn.

16

Specific Absorption Rate (SAR) certification information

THIS DEVICE MEETS INTERNATIONAL GUIDELINES FOR EXPOSURE TO RADIO WAVES



www.sar-tick.com

Your mobile is designed not to exceed the limits for exposure to radio waves recommended by international guidelines. The guidelines were developed by an independent scientific organisation (ICNIRP) and include a substantial safety margin designed to assure the safety of all persons, regardless of age and health.

The radio wave exposure guidelines use a unit of measurement known as the Specific Absorption Rate, or SAR. The SAR limit for mobile devices is 2.0 W/kg for Head and Body, 4.0 W/kg for Limb. The highest SAR values under the ICNIRP guidelines for this device model are:

17

Correct disposal



This marking on the product, accessories or literature indicates that the product and its electronic accessories (e.g. charger, headset, USB cable) should not be disposed of with other household waste.

This product is RoHS compliant.



This marking on the battery, manual or packaging indicates that the batteries in this product should not be disposed of with other household waste.

For information on Samsung's environmental commitments and product-specific regulatory obligations, e.g. REACH, WEEE, Batteries, visit samsung.com/uk/aboutsamsung/samsungelectronics/corporatecitizenship/data_corner.html

18

Safety information

Read all safety information before using the device to ensure safe and proper use.



Warning

Follow the warning information provided below to prevent incidents such as fire or explosion

- Do not expose the device to physical impact or damage.
- Use manufacturer-approved chargers, accessories, and supplies.
- Do not touch the charger or the device with wet hands while the device is charging.
- If any part of the device is cracked or broken, stop using the device immediately and take it to a Samsung Service Centre.
- Do not turn on or use the device when the battery compartment is exposed.

19

Follow the warnings below to prevent injury to people or damage to the device

- Do not allow children or animals to chew or suck the device.
- Do not poke eyes, ears, or other body parts with the device or insert the device into the mouth.
- The device can be used in locations with an ambient temperature of 0 °C to 35 °C. You can store the device at an ambient temperature of -20 °C to 50 °C. Using or storing the device outside of the recommended temperature ranges may damage the device or reduce the battery's lifespan.
- Do not store your device near or in heaters, microwaves, cooking equipment, or high pressure containers.
- Keep your device dry.
- Do not use your device outdoor during a thunderstorm.
- Comply with all safety warnings and regulations regarding mobile device usage while operating a vehicle.

20

- Do not wear the device too tightly. Make sure to keep the device clean and dry. Though this device has met international safety standards, some people may experience skin irritation if they are allergic to certain substances.



To prevent possible hearing damage when using a headset, do not listen to sound at high volume for long periods.

Maintaining water and dust resistance

Your device supports water- and dust-resistance. Follow these tips carefully to maintain the water- and dust-resistance of your device. Failure to do so may result in damage to your device.

- Do not immerse the device in water deeper than 1.5 m or keep it submerged for more than 30 minutes.
- Do not expose the device to **water moving with force**.
- If the device or your hands are wet, dry them thoroughly before handling the device.
- **If the device is exposed to clean water, dry it thoroughly with a clean, soft cloth. If the device is exposed to other liquids, such as salt water, ionised water, or alcoholic beverage, rinse it with clean water and dry it thoroughly with a clean, soft cloth. If you do not follow these instructions, the device's performance and appearance may be affected.**

22

- **If the device is dropped or receives an impact**, the water- and dust-resistant features of the device may be damaged.
- **If the device has been immersed in water or the microphone or speaker is wet**, sound may not be heard clearly during a call. Wipe the device with a dry cloth or dry it thoroughly before using it.
- The touchscreen and other features may not work properly **if the device is used in water**.

Your device has been tested in a controlled environment and certified to be water- and dust-resistant in specific situations (meets requirements of classification IP68 as described by the international standard IEC 60529 - Degrees of Protection provided by Enclosures [IP Code]; test conditions: 15 - 35 °C, 86 - 106 kPa, 1.5 metre, 30 minutes). Despite this classification, it is still possible for your device to be damaged in certain situations.

23

SAR values for European countries: The SAR values below are only for devices developed for use in European countries.

Maximum SAR for this model and conditions under which it was recorded

Limb SAR	0.XXX W/kg
Front of face SAR	0.XXX W/kg

(Head SAR limit is also applicable for the front of face SAR.) Front of face SAR testing has been carried out at a separation distance of 1.0 cm. To meet RF exposure guidelines during Front of face operation, the device should be positioned at least this distance away from your face.

For SAR values for all other countries: For SAR values specific to your model, visit www.samsung.com/sar and search for your region and device with the model number.

25

Removing the battery

- **To remove the battery, contact an authorised service centre. To obtain battery removal instructions, please visit www.samsung.com/global/ecodesign_energy.**
- For your safety, you **must not attempt to remove** the battery. If the battery is not properly removed, it may lead to damage to the battery and device, cause personal injury, and/or result in the device being unsafe.

26

21

24

27

FCC Warning Statement

FCC Part 15.19

This device complies with part 15 of the FCC Rules. Operation is subject to the following two conditions: (1) this device may not cause harmful interference, and (2) this device must accept any interference received, including interference that may cause undesired operation.

FCC Part 15.21

Any changes or modifications (including the antennas) to this device that are not expressly approved by the manufacturer may void the user's authority to operate the equipment.

FCC Radiation Exposure Statement (Wireless Charger Dock)

This equipment complies with FCC Radiation exposure limits set forth for an uncontrolled environment. This device and its antenna must not be co-located or operating in conjunction with any other antenna or transmitter.

This equipment should be installed and operated with a minimum distance of 20cm between the radiator and your body.

28

IC Warning Statement

This device complies with Industry Canada licence-exempt RSS standard(s). Operation is subject to the following two conditions: (1) this device may not cause interference, and (2) this device must accept any interference, including interference that may cause undesired operation of the device.

Le présent appareil est conforme aux CNR d'Industrie Canada applicables aux appareils radio exempts de licence. L'exploitation est autorisée aux deux conditions suivantes : (1) L'appareil ne doit pas produire de brouillage, et (2) L'utilisateur de l'appareil doit accepter tout brouillage radioélectrique subi, même si le brouillage est susceptible d'en compromettre le fonctionnement.

30

IC Radiation Exposure Statement (Wireless Charger Dock)

This equipment complies with IC RF Radiation exposure limits set forth for an uncontrolled environment. This device and its antenna must not be co-located or operating in conjunction with any other antenna or transmitter.

This equipment should be installed and operated with a minimum distance of 20cm between the radiator and your body.

Cet équipement est conforme aux limites établies par Industrie Canada en matière d'exposition aux radiofréquences dans un environnement non contrôlé. Cet appareil et son antenne ne doivent pas être colocalisés ou fonctionner en conjonction avec tout autre antenne ou émetteur.

Cet équipement doit être installé et utilisé avec une distance minimale de 20cm entre le radiateur et votre corps.

31