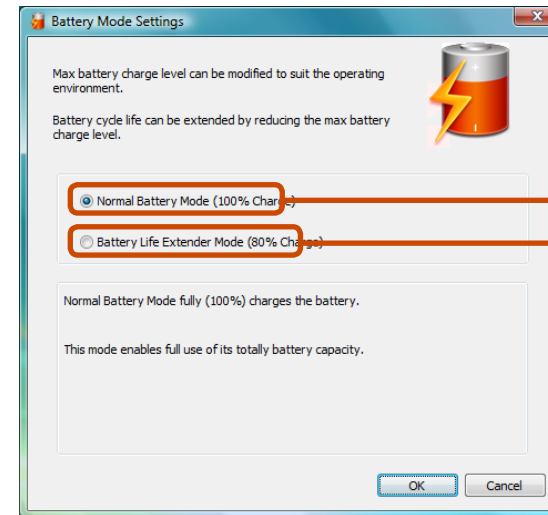




## • Usage Mode of Samsung Battery Manager

- The maximum battery mode optimizes the system operation speed to increase the battery run time, so the program execution time may get longer.
- If you change the power settings, the properties in **Power Options** window will also be changed.
- Complete, install Samsung Battery Manager using the **System Software Media** in order to use the general mode.



Battery Normal Mode  
Battery Life Extension Mode

### (Battery Life Extension Mode)

## Extending the Battery Life (Optional)

The Battery Life Extender is a battery power management program that enables extending the battery life. Users can change the settings depending on their requirements.



The Battery Life Extender is optional and may not be supplied depending on the model.

**1** Click **Start > All Programs > Samsung > Battery Life Extender > Battery Life Extender**.

**2** When the following screen appears, select a mode and click the **OK** button. You can use the battery in the selected mode.

### Battery Normal Mode

This mode maintains 100% of the battery charge when using the computer on AC power. In this case, although the battery use time increases, the battery life is reduced.

### Battery Life Extension Mode

This mode maintains 80% of the battery charge when using the computer on AC power. In this case, although the battery use time decreases, the battery life is extended.



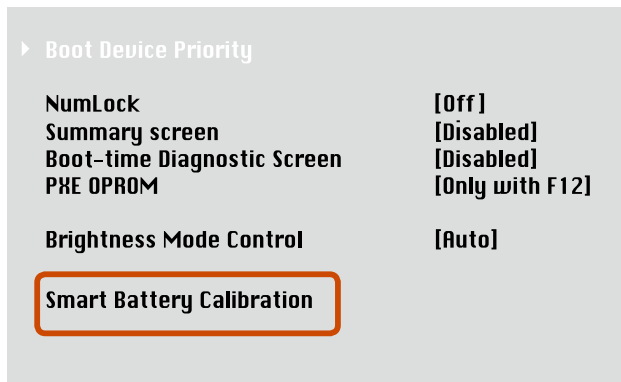
Press the **F2** key when the Samsung logo appears in the booting sequence to enter the BIOS Setup, select **Advanced > Battery Life Cycle Extension**, and set it to **Enable**. Then you can use the battery life cycle extension mode.

## Using the Battery Calibration Function

When charging/discharging the battery repeatedly for a short time only, the battery usage time may be reduced by the difference between the actual battery charge and the remaining charge display.

In this case, the actual battery charge and the remaining charge display will be the same by discharging the battery completely using the Battery Calibration function, and then recharging it again.

- 1 Disconnect the AC power adapter after turning off the computer.
- 2 Restart your computer and press the **F2** button when the Samsung logo appears, to start the BIOS Setup.
- 3 Move to the **Boot > Smart Battery Calibration** item using the direction keys and press **<Enter>**.



- 4 Highlight **Yes** in the **Battery Calibration Confirmation** window and press **<Enter>**.

The Battery Calibration function is activated and the battery is forcefully discharged. To stop the operation, press the **<Esc>** button.

This operation requires 3~5 hours depending on the battery capacity and the remaining battery charge.

You can connect a Kensington lock to the Security Lock port to prevent your computer from being stolen when you have to use the computer in a public place.

To use this feature, you have to purchase the Kensington lock additionally. To use the Kensington lock, refer to the product manual.

Tie the Kensington lock cable to a fixed object and install the other end of the cable to the Security Lock port.





# Chapter 4. Troubleshooting

<b>Computer Backup/Restoration</b> (Samsung Recovery Solution / For supported models only)	<b>85</b>
<b>Browse Q&amp;A</b>	<b>96</b>
<b>Q &amp; A</b>	<b>98</b>
<b>Display Related</b>	<b>98</b>
<b>Sound Related</b>	<b>100</b>
<b>Wireless Network (WLAN) Related</b>	<b>102</b>
<b>Game and Program Related</b>	<b>102</b>
<b>Bluetooth (Optional)</b>	<b>104</b>
<b>Easy Content Share Related</b>	<b>106</b>

Samsung Recovery Solution is a program that enables restoring or backing up the hard disk drive for when a problem occurs with the computer.



- Samsung Recovery Solution may not be provided or the version may differ depending on the model. In addition, some functions may not be provided or may differ depending on the version.

For more information on using Samsung Recovery Solution, please refer to the online help of the program.

- The screen images in this document may differ from actual product.
- If your computer does not have an internal ODD, you need an external ODD connected to your computer to use the Backup Function or Restore Function using DVDs.
- The System Software function may not be provided depending on the program version.

## Samsung Recovery Solution Functions

### Backup/Restore Functions

#### Backup Function

Backs up drive C or required folders and files.

- **Complete Backup**  
Backs up drive C.
- **Data Backup**  
Backs up important folders and files.

#### A problem occurs



#### Restore Function

Restores major Windows files, drive C, or folders and files to the previous state.

- **Basic Restore**  
Restores only major Windows files in a short time.
- **Complete Restore**  
Restores drive C to the previous, normal state.
- **Data Restore**  
Restores important files or folders to the previously backed up state.

## System Software Functions

Samsung Recovery Solution provides system software so that you can reinstall or copy the device drivers and system software necessary for normal operations onto a separate storage device.

### Restore Function

Not only can you use Samsung Recovery Solution when Windows is running, but also when you are unable to boot up into Windows. Let's learn how to use Samsung Recovery Solution.

Optional functions such as Initial State Image, Initial Status Backup, and Partitioning are only available in some models.

## Partition Setup & Initial Status Backup

If you turn your computer on for the first time, the Initial Status Backup function is performed after registering Windows. This function saves an image of the Initial Status of the C drive to a secure location so that users can restore the computer to the Initial Status using the Complete Restore function. An Initial Status Backup is only performed once immediately after the computer is purchased.

**1** If you turn the power on for the first time, the Register Windows screen appears. If you register Windows according to the instructions on the screen, the computer will be restarted.

**2** After the computer has been restarted, the **Partition Setup** screen appears.

To resize the C and D drives, adjust the partition size using the slide bar and the click **Next**.



The Partition Setup function is only available when the computer is turned on for the first time and will not be available afterwards. Once you have completed the partitioning, it cannot be resized. Partition the disk carefully.

**3** The **Initial Status Backup** screen appears. To continue the Initial Status Backup, click **Restart Now**. The computer will restart.

**4** The Initial Status Backup is performed to backup the initial status of the C drive to a secure location. This backup image is used for the Complete Restore function that restores your computer to the initial status.

**5** When the Initial Status Backup is complete, restart Windows.

## Restoring the computer

Restore is a function that enables restoring the computer to a saved point when the computer was purchased or a user-saved point.


The Restore function provides the Basic Restore and Complete Restore options.

### 1 – When Windows is running:

Click **Start > All Programs > Samsung > Samsung Recovery Solution > Samsung Recovery Solution**.


### – When Windows does not start:

Turn the computer on and press the **F4** key when the boot screen (SAMSUNG logo) appears. After a moment, the computer boots up in Restoration mode and the Samsung Recovery Solution screen appears.

 For computers supporting the touch screen function, the touch screen function does not work during Restore Mode. In this case, please use the touchpad or mouse.


### 2 If the initial menu screen appears, click **Restore**.




 If you click **Select by Symptom**, the Select by Symptom menu appears. If you select a symptom, a recommended restoration option will blink. Click the restoration option to continue.


### 3 Select either **Basic Restore** or **Complete Restore** from the Restore menu.

- A **Basic Restore** restores the major Windows files only while maintaining the user configuration and data on the C drive in a short time.
- A **Complete Restore** deletes the entire C drive and then restores the contents of the C drive.

 Run **Complete Restore** if the computer does not work even after **Basic Restore** has been completed.


To restore the computer to the initial state, click **Computer Initial State** and perform the restoration process according to the instructions that appear on the screen.

-  In the **Advanced** menu, you can change the size of the hard drive partitions (e.g. C: and D:).
- Make sure to backup your data in advance, as all data will be deleted after the partition size is changed.
  - The **Advanced** menu is only activated when the computer boots up in the restoration area. (by pressing the **F4** key during the booting sequence.)

-  Since a Complete Restore deletes all user data as well as additionally installed programs, please backup your important data first using the Data Backup function, before running Complete Restore.

**4** The computer boots up into restoration mode and the restoration progress message appears. If you click **OK**, the restoration begins. The restoration may take some time, please wait for a moment.

**5** When the 'Restart the System' message appears after the restoration is complete, click **OK** to restart the system.

-  Make sure that the power cord is connected while the restoration is in process. The first time the computer boots up after a Complete Restore has been performed, the speed of the boot process may be slowed down due to the system optimization process. At this time, do not shut the computer down by force.



## Backup Function

### Complete Backup/Restore

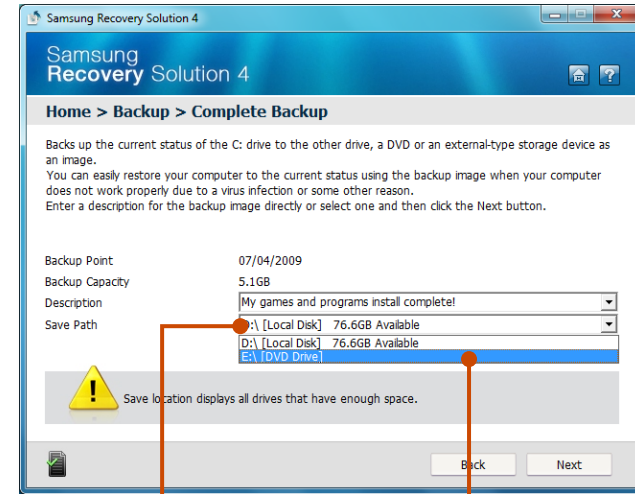
A **Complete Backup** saves the complete image of the C drive onto another drive or DVD. A **Complete Restore** restores the image file saved by the Complete Backup onto the C drive.

#### ► Complete Backup



If you run Complete Backup using a DVD, you can restore the computer even when a problem occurs with the hard disk or when the restoration area is removed.

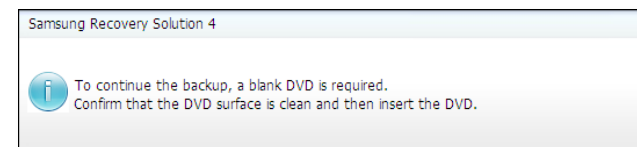
- 1 In the Samsung Recovery Solution start screen, click **Backup**.
- 2 Click **Complete Backup** in the backup menu.
- 3 Enter a description for the backup regarding the current computer status in the Description field so that you can easily recognize it later, and specify the Save Path. If your computer has a DVD-Writer, you can specify the DVD drive as the Save Path.



Select Drive D.

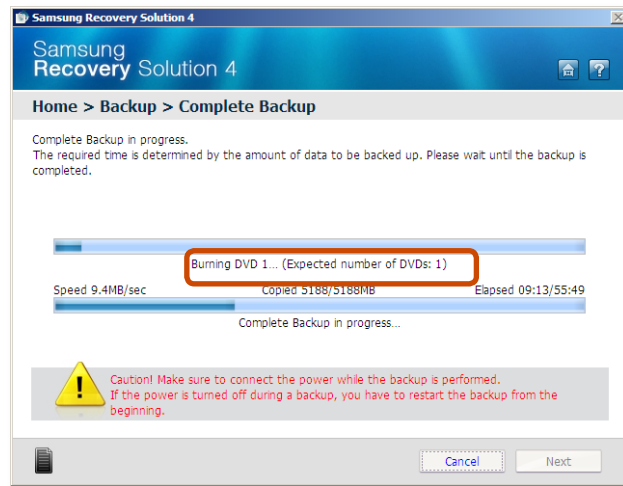
Select the DVD drive.

- 4 If you click the **Next** button, the system restarts in restoration mode and the **Complete Backup** begins. If you have selected the DVD drive as the Save Path, the "Insert a blank DVD" message appears. Insert a blank DVD and click the **OK** button.



Samsung Recovery Solution supports DVD+R, DVD-R, DVD+RW, and DVD-RW, but does not support CD-R, CD-RW, DVD-RAM, DVD-DL (Dual Layer), HD-DVD, and Blu-Ray.

- 5 The Complete Backup begins. If multiple DVDs are required, the expected number of DVDs is displayed in the progress screen. Whenever burning a DVD is completed, the “Insert the next DVD” message will appear. Continue the backup according to the instructions.



- 6 When the ‘Restart the System’ message appears after the backup is complete, click **OK** to restart the system.

## ► Complete Restore

### 1 – When backing up onto DVD

Turn the computer on and insert the backup DVD into the DVD drive.

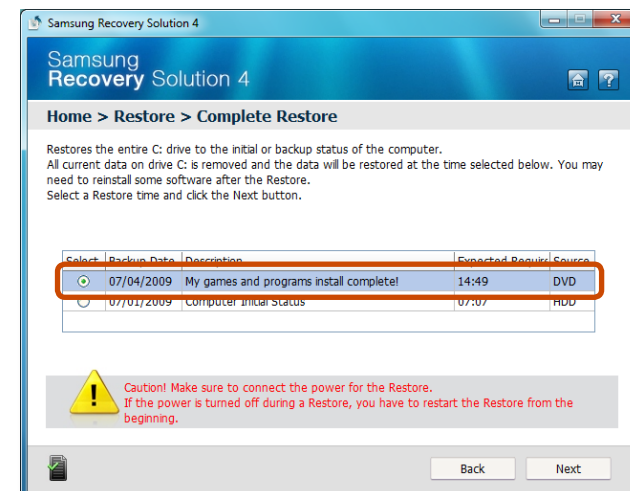
If there are multiple backup DVDs, insert the first DVD.

### – When backing up to another drive


Proceed to Step 2.

- 2 When the Samsung Recovery Solution start screen appears, click **Restore** and then click **Complete Restore**.

- 3 Select a **Complete Backup** restoration point in the restoration point selection screen and click the **Next** button. The system is restarted.



4 The restoration progress message appears after the computer boots up in restoration mode. If you click **OK**, the restoration begins.

 If multiple DVDs have been used for a Complete Backup, whenever burning a DVD is completed, the "Insert the next DVD" message will appear.

5 When the 'Restart the System' message appears after the restoration is complete, click **OK** to restart the system. The Complete Restore has been completed.

## Data Backup/Restore

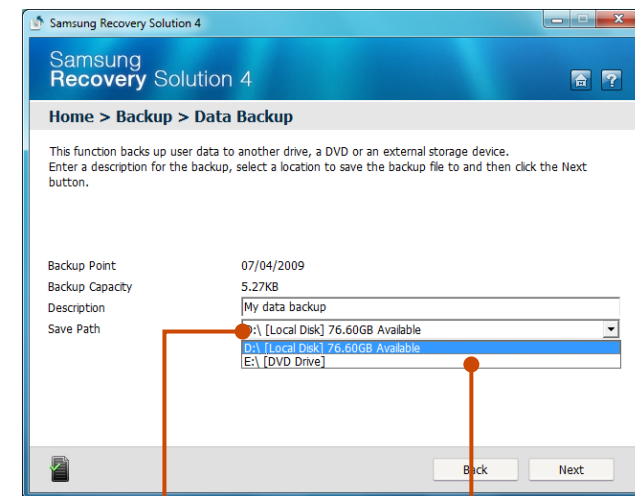
**Data Backup** enables you to save specific files or folders onto another drive or DVD. **Data Restore** enables you to restore data using the data saved by a Data Backup when data is lost. This guide describes the Backup and Restore procedures on the basis of backing up and restoring by using DVD.

### ► Data Backup

1 When the Samsung Recovery Solution start screen appears, click **Backup** and then click **Data Backup**.

2 In the data selection screen, select either **Basic Selection** or **Select from all**, select a folder or file to be backed up, and then click the **Next** button.

3 Enter a description for the backup in the **Description** field so that you can easily recognize it later and specify the **Save Path**. If your computer has a DVD-Writer, you can specify the DVD drive as the Save Path.



Select Drive D.

Select the DVD drive.



If you have specified a hard disk drive or a removable disk as the Save Path, the **SamsungRecovery\SamsungData** folder is created on the corresponding drive (e.g. D:\) and the data is saved to the folder. Take care to not delete the folder by mistake or on purpose.

**4** If you click the **Next** button, the Data Backup begins. If you have selected the DVD drive as the Save Path, the “Insert a blank DVD” message appears. Insert a blank DVD and click the **OK** button.

**5** The “Backup is completed” message appears.

## ► Data Restore

### **1** – When backing up onto DVD

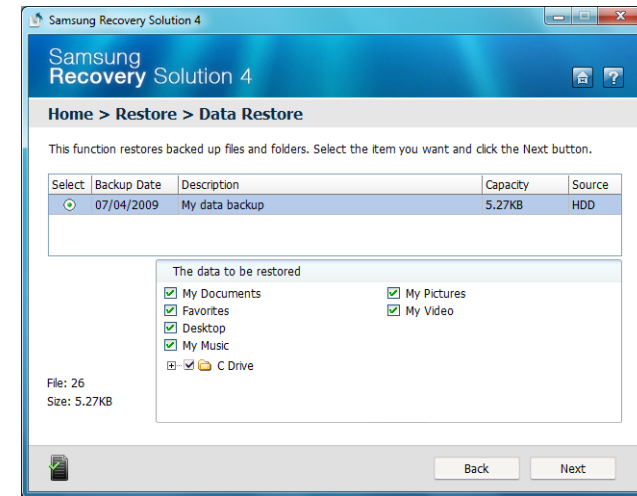
Turn the computer on and insert the backup DVD into the DVD drive.

### – When backing up to another drive

Proceed to Step 2.

**2** When the initial menu screen appears, click **Restore** and then click **Data Restore**.

**3** Select a backup item to be restored in the backup list and click the **Next** button.



**4** Select a folder for the restoration and click the **Next** button. Data Restore begins.

**5** When Data Restore is completed, check if the data has been restored to the specified folder.

## System Software Function

### Using System Software

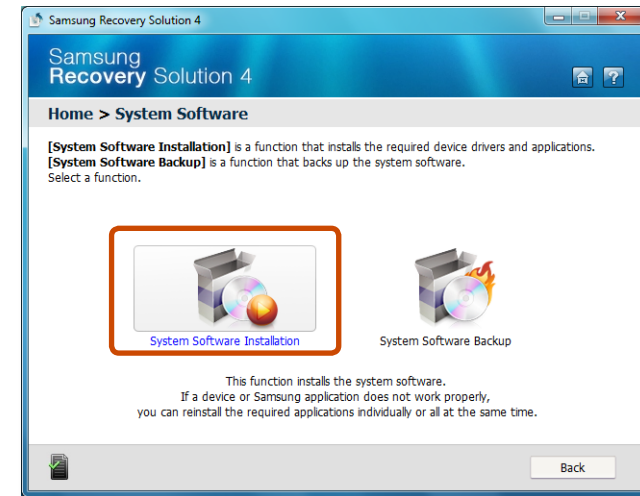
The System Software function is a function that enables you to reinstall device drivers and System Software Programs or back up those programs.

The system software function is supported by **Samsung Recovery Solution version 4 or later**. Therefore, the function may not be supported depending on the version.

The System Software Installation Function only works in Microsoft Windows.

### ▶ Installing System Software

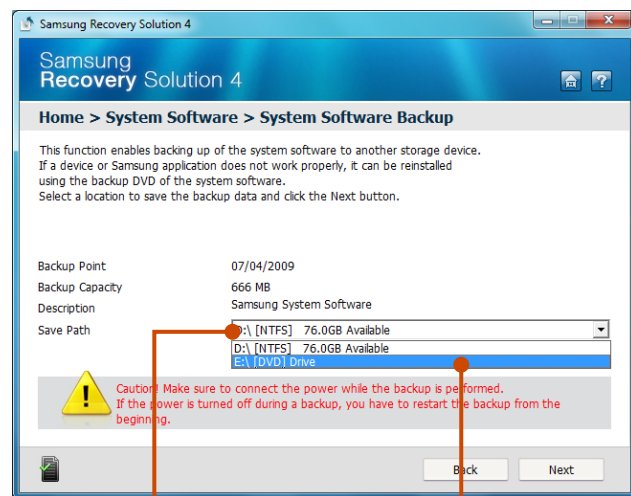
- 1 When the initial menu screen appears, click **System Software** > **System Software Installation**.



- 2 When the **Samsung System Software** screen appears, check all the device drivers and application programs you want to install and then click **Install Now**.
- 3 After the installation is complete, the computer will restart.

## ► System Software Backup

- 1 When the initial menu screen appears, click **System Software** > **System Software Backup**.
- 2 Specify the Save Path. If your computer has a DVD-Writer, you can specify the DVD drive as the Save Path.



Select Drive D.    Select the DVD drive.

! If you have specified a hard disk drive or a removable disk as the Save Path, the **SamsungSoftware** folder is created on the corresponding drive (e.g. D:\) and the system software programs are saved to that folder. Take care to not delete the folder.

- 3 If you click the **Next** button, the Software Backup begins. If you have selected the DVD drive as the Save Path, the “Insert a blank DVD” message appears. Insert a blank DVD and click the **OK** button.
- 4 After the backup, the **System Software Backup is completed** message appears.



- If you want to install the System Software Programs backed up on the drive, run the **SoftwareMediaXX.exe** file in the **SystemSoftware** folder.
- When installing System Software Programs from the backed-up DVD, insert the DVD and follow the System Software Installation directions.
- To delete Samsung Recovery Solution, refer to the Help section of the program.

## Recovery Solution Representation (Optional)



### What is a Recovery Area?

- Samsung computers have an additional partition to recover computers or save backup files.  
(Only for models with the Samsung Recovery Solution.)  
This partition is called a Recovery Area and it includes a recovery image that comprises of the OS and application programs.
- You can either double-click the Samsung Recovery Solution icon on the desktop or press **F4** while booting the computer to enter the Recovery Area. Then you can back up the present computer state or recover the computer from backed up images.
- For deleting the Recovery Area, you need to use an additional Recovery Area Removal Tool. After deleting the recovery area, you can use the newly created partition for other uses, such as for saving personal data. Be careful that once the recovery area is deleted, the Samsung Recovery Solutions will not work anymore.

### The capacity representation of the hard disk drive(HDD) in Windows is different from the product specifications.

- The capacity of the storage device (HDD) of the manufacturer is calculated assuming that 1KB=1,000 Bytes. However, the operating system (Windows) calculates the storage device capacity assuming that 1KB=1,024 Bytes, and therefore the capacity representation of the HDD in Windows is smaller than the actual capacity.  
This is due to the difference in capacity calculation and does not mean the installed HDD is different from the product specifications.
- The capacity representation in Windows may be smaller than the actual capacity because some programs occupy a certain area of the HDD outside of Windows.
- For models with Samsung Recovery Solution, the HDD capacity representation in Windows may be smaller than the actual capacity because Samsung Recovery Solution uses a hidden area of about 5~20GB of the HDD to save the recovery image, and that hidden area is not counted towards the total size available to Windows.  
The size of Samsung Recovery Solution varies by models because of the different size of applied programs.

## Display Related

- 1-1 The LCD screen is too dark or too bright.
- 1-2 In the following cases, the screen blinks or there is noise for a short time.
- 1-3 When I connect a projector, and change the settings to display the screen image on both the LCD and the projector by pressing the  + , the screen is not displayed properly.
- 1-4 When I connect a projector, the taskbar at the bottom of the screen is not displayed on the projector.
- 1-5 The shortcut icons are not displayed on the screen even if I press the shortcut key.
- 1-6 I have connected a monitor(or projector) to the computer, but the colors on the monitor are abnormally displayed.
- 1-7 I am trying to view the screen through a TV by connecting it through the HDMI port, but the edge of the screen is not displayed.
- 1-8 I cannot configure the Image Sharpness in the NVIDIA Control Panel of <NVIDIA Graphics>.

## Sound Related




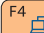
- 2-1 How can I configure the sound for video or audio chatting?
- 2-2 I cannot hear my voice with the internal microphone.
- 2-3 Sound is recorded abnormally when I select the Acoustic Echo Cancellation option, connect an external microphone, select the Play Device > Speaker > Level tab and then deselect Mute for the Microphone.
- 2-4 How can I configure the Recording Mixer while broadcasting music in WinAMP?  
(for the Windows XP operating system only)

## Wireless Network (WLAN) Related

- 3-1 I cannot find an AP.



## Game and Program Related

- 4-1 The video stops playing in some games.
- 4-2 The image is broken in some games.
- 4-3 When I run a game immediately after installing it, the game does not run.
- 4-4 The  +  key combination does not work.
- 4-5 The  +  key combination does not work or displays the screen abnormally during a game.
- 4-6 The game speed is too slow or too fast (Windows XP only)
- 4-7 Some part of the screen is cut or displayed in black in some games.
- 4-8 The screen is displayed abnormally in some games.
- 4-9 The battery does not charge when the charge level is 96%~99%.

## Bluetooth (Optional)

- 5-1 How to view the Bluetooth help information.
- 5-2 When no headset is found or cannot be connected
- 5-3 Usage Instructions

## Easy Content Share Related

- 6-1 No connected device is shown in Easy Content Share.
- 6-2 My TV which has been used successfully with Easy Content Share is suddenly not shown in the list.
- 6-3 Subtitles are not displayed when viewing videos on my TV.
- 6-4 No screen is displayed when I try to view a video on my TV.
- 6-5 Do only the PC and TV have the DLNA function?

This section provides information on possible problems, solutions and other references for using the system.









- Since these descriptions are written on the basis of the latest operating system, Windows 7, some of the content and the figures of the descriptions may differ depending on the operating system.  
Since the procedures for other Windows operating systems are similar, use the computer referring to these descriptions.
- The path may differ depending on the operating system.

## Display Related

**Q** The LCD screen is too dark or too bright.

**A** Turn the LCD backlight on or adjust the LCD brightness.



Press  +  to turn the LCD backlight on or  
press  +  or  +  to adjust the LCD brightness.



**Q** In the following cases, the screen blinks or there is noise for a short time.

**Click the Graphics Related tab, Change Resolution, Change Display Device, Remove the AC Adapter, Restart the System, Change Power Scheme.**

**A** This may happen while the video driver is examining the connected device.

While the detection process is busy, any connected display devices may blink or some noise may occur.

**Q** When I connect a projector, and change the settings to display the screen image on both the LCD and the projector by pressing the  + , the screen is not displayed properly.

**A** Press the  +  keys again.

If the problem continues even after pressing the key combination, this is because the current resolution is too high and is not supported by the projector. In this case, change the resolution to 1024x768 pixels.

**Q** When I connect a projector, the taskbar at the bottom of the screen is not displayed on the projector.

---

**A** This occurs because a WXGA LCD supports a resolution of 1280x800 pixels but the resolution is not supported by the projector. In this case, change the resolution to 1024x768 pixels (recommended).

**Q** The shortcut icons are not displayed on the screen even if I press the shortcut key.

---

**A** The shortcut icons only appear when the Easy Display Manager program is installed.

**Q** I have connected a monitor(or projector) to the computer, but the colors on the monitor are abnormally displayed.

---

**A** Check if the monitor and computer are properly connected with the signal cable and reconnect the cable if necessary.

**Q** I am trying to view the screen through a TV by connecting it through the HDMI port, but the edge of the screen is not displayed.

---

**A** It is recommended using a notebook computer screen or monitor for documents and Internet pages.

Although HDMI is good for watching videos, the edges may be cut or the text may be blurred on a HDMI TV.

**Q** I cannot configure the Image Sharpness in the NVIDIA Control Panel of <NVIDIA Graphics>.

---

**A** The **NVIDIA Control Panel > Adjust desktop Color Settings > Image Sharpening** item is set to **None** and will not be configurable. This is normal.

This function is only available for old graphic chipsets.

## Sound Related

**Q** How can I configure the sound for video or audio chatting?

### A1 Configuring the Realtek HD Audio Manager

- 1 Select **Control Panel > Realtek HD Audio Manager**.
- 2 Select the **Mic** tab.
- 3 Select the Noise Suppression and the Acoustic Echo Cancellation items and click the **OK** button.

#### ► For Windows 7/Vista

When using the Remove sound echo option, select the **Play Device > Speaker > Level** tab and set the Microphone to **Mute**.

#### ► For Windows XP

Using **Acoustic Echo Cancellation** option keeps the Microphone Volume muted in the Playback Mixer.

### A2 Playback Mixer Settings (Windows XP only)

- 1 Double-click the **Volume** icon in the Taskbar and select **Options > Properties** from the menu.

- 2 Select **Realtek HD Audio Input** in the Mixer device field, confirm that the **Microphone** is selected in the **Show the following volume controls** field, and click the **OK** button.
- 3 Select the **Microphone** item in the **Record Control** window and close the window.

**Q** I cannot hear my voice with the internal microphone.

**A** This is because the sound from the internal microphone is removed so that the sound is not delivered to the speaker and causes feedback from the internal microphone.

However, you can record the sound from the microphone normally.

#### ► For Windows 7/Vista

When using an external microphone, select the **Play Device > Speaker > Level** tab and deselect Mute for the Microphone. Then you can listen to the sound from the external microphone through the speakers.

#### ► For Windows XP

When using an external microphone, if you disable the microphone channel mute function of the play mixer, you can hear the sound input into the external microphone through the speaker.

**Q** Sound is recorded abnormally when I select the **Acoustic Echo Cancellation** option, connect an external microphone, select the **Play Device > Speaker > Level** tab and then **deselect Mute for the Microphone**.

**A** This occurs because the algorithm used to remove the echo sound regards some of the sound as an echo and removes this, as the recording is done by playing the sound from the external microphone.

► **For Windows 7/Vista**

After selecting the **Acoustic Echo Cancellation** option, please select the **Play Device > Speaker > Level** tab and select **Mute** for the **Microphone** for a normal recording.

► **For Windows XP**

In this case, select **Mute** in the **Microphone Volume** of the **Playback Mixer** after selecting **Acoustic Echo Cancellation** item.

**Q** How can I configure the **Recording Mixer** while broadcasting music in **WinAMP?** (Windows XP only)

**A1 Playback Mixer Settings**

- 1 Double-click the **Volume** icon in the **Taskbar** and select **Options > Properties** from the menu.
- 2 Select **Realtek HD Audio Input** in the **Mixer device** field, select **Stereo Mix** in the **Show the following volume controls** field, and click the **OK** button.
- 3 Select the **Stereo Mix** item in the **Record Control** window and close the window.


**A2 Realtek HD Sound Effect Manager Settings**

- 1 Click **Start > Control Panel > Sounds, Speech, and Audio Devices > Realtek HD Sound Effect Manager**.
- 2 Click **Microphone** tab.
- 3 Unselect **Noise Suppression** and **Acoustic Echo Cancellation** and click **OK**.

## Wireless Network (WLAN) Related

### Q I cannot find an AP.

**A1** Verify whether the Wireless LAN LED is on.

If it is turned off, turn it on by pressing the Wireless LAN On/Off button (Fn + ).

**A2** For the Windows 7 operating system, click the **network connection** icon and then click **Troubleshooting** in the Taskbar.

You can resolve a temporary wireless network problem.

**A3** If there is no wireless network to connect to, it will not scan for wireless networks.

In this case, move to a location where a wireless network is available or install an AP or wireless sharer to scan for wireless networks.

## Game and Program Related

Windows may not provide some functions properly when performing some applications especially games, or may cause a problem due to a device driver compatibility issue. For the latest device drivers and bug fixes, please refer to the respective company's website.

### Q The video stops playing in some games.

**A** 3D games save texture data that is necessary to implement the 3D images to the system memory.

In this case, if there is insufficient system memory, the game saves the data to the hard disk drive and then loads the data to the memory when the data is required. At this time, the video may stop playing in some games.

In this case, to resolve the problem, lower the resolution of the game or the screen.

### Q The image is broken in some games.

**A** Some parts of the picture may be broken in some games that require a high-performance graphics card.

Set the 3D setting of the game to a level lower than the default or lower the game resolution.



**Q** When I run a game immediately after installing it, the game does not run.

---

**A** This happens when the game is not compatible with Windows. However, if you run the game again, the game will run normally.



**Q** The  +  key combination does not work.



---

**A** You cannot switch the display device while playing a video CD or MPEG video or the computer is in Dual View mode. In addition, if the NetWare Client32 program has been installed, the  +  key combination may not work.

**Q** The  +  key combination does not work or displays the screen abnormally during a game.

---

**A** Since some games and 3D applications take control of the display device, pressing the  +  key combination may terminate the program or cause the screen to be displayed abnormally.

Therefore, use the  +  key combination before using the program and do not use the key combination while the program is running.

**Q** The game speed is too slow or too fast (Windows XP only)

---

**A** Set the Power schemes to Always On.  
(Click **Start > Control Panel > Performance and Maintenance > Power Options > Power schemes.**)

**Q** Some part of the screen is cut or displayed in black in some games.

---

**A** This problem may occur in some games developed for DirectX 8.1 or in the 024x768 resolution.  
(NHL 2003, MVP Baseball 2003, Special Force, Hangame, pmang, etc.)

**Q** The screen is displayed abnormally in some games.

---

**A** The screen may not be displayed normally in some games when the resolution is set to 1024x600 and the color quality is set to 32 bit.  
For these games, set the screen resolution to 1024x600 or 800x600 and the color quality to 16 bit.

**Q** The battery does not charge when the charge level is 96%~99%.

**A** In general, the computer is designed so that the battery is recharged only when the remaining battery charge is 95% or less to secure the stability and lifetime of the battery.

Therefore, in this case, even if the charge LED of the computer is lit green, it is normal.

## Bluetooth (Optional)

**Q** How to view the Bluetooth help information.

► **For Windows 7/Vista**

**A** Press the **Windows** + **F1** key combination to launch Windows Help and search for Bluetooth related items in the Help section.

► **For Windows XP**

**A** Double-click the **My Bluetooth Environment** shortcut icon on the Desktop to launch the program, and then press the **F1** key to view the help information.

**Q** When no headset is found or cannot be connected

**A1** If the headset is already connected to another device, you will not be able to find the headset and cannot connect to the headset even if the headset is found. Disconnect the connection to the other device and then start the search again.

**A2** If the headset is connected to a power adapter, you cannot make a Bluetooth connection.

Disconnect the power adapter and then retry.



**A3** A Bluetooth headset provides two operating modes, On/Off mode and Pairing mode. To connect the headset to another Bluetooth device such as a PC or mobile phone, the headset should be in Pairing mode.

- **Entering Pairing mode**

For more information about entering Pairing mode, refer to the user manual of the headset. In this section, we will describe the general method to enter Pairing mode.

- **Power button type headsets  
(headsets that are turned on by pressing the power button)**

If you press and hold the power button for 1~3 seconds, the power is turned on. If you do not release the button even after the power is turned on, the headset enters Pairing mode.

- **On/Off switch type headsets  
(headsets that are turned on or off by sliding the power switch to the corresponding position.)**

Turn the headset on by sliding the power switch to the on position while holding down the Call button.

The headset is turned on in Pairing mode. Check if the headset is in Pairing mode through the headset LED.

After switching to Pairing mode, search for the headset in the Bluetooth device window on the computer.

In general, Pairing mode automatically turns to On/Off mode after a predetermined period of time. In this case, you have to turn the headset off and then on and make the headset enter Pairing mode again to connect to the computer.

## Usage Instructions

---

- Generally, Bluetooth devices deliver stable performance while connected within a 3m(10 ft.) distance.
- For Bluetooth to operate smoothly, use the computer in an open environment with no walls or obstacles in the way and having low radio interference.
- You can connect to only one Bluetooth device at a time for a phone connection, data syncing, electronic business card exchange, FAX transmission/reception, sound related functions, and serial port functions.
- It is recommended using only one Bluetooth device at a time as connecting multiple Bluetooth or other wireless devices at the same time may slow or destabilize the Bluetooth connection.
- Data communications via Bluetooth may be poor when the CPU load is at full capacity or there are insufficient system resources.
- The Bluetooth function of a Bluetooth PDA, mobile phone, mouse or keyboard may be turned off. To use them in connection with a Samsung computer supporting Bluetooth, you must check if the Bluetooth function of the device to connect to is turned on.  
For the procedures on turning on the Bluetooth function of a device, refer to the relevant device manual.
- The services provided by Bluetooth devices may vary depending on their capabilities. For the services provided by the Bluetooth device, refer to the device manual.

## Easy Content Share Related

**Q** No connected device is shown in Easy Content Share.

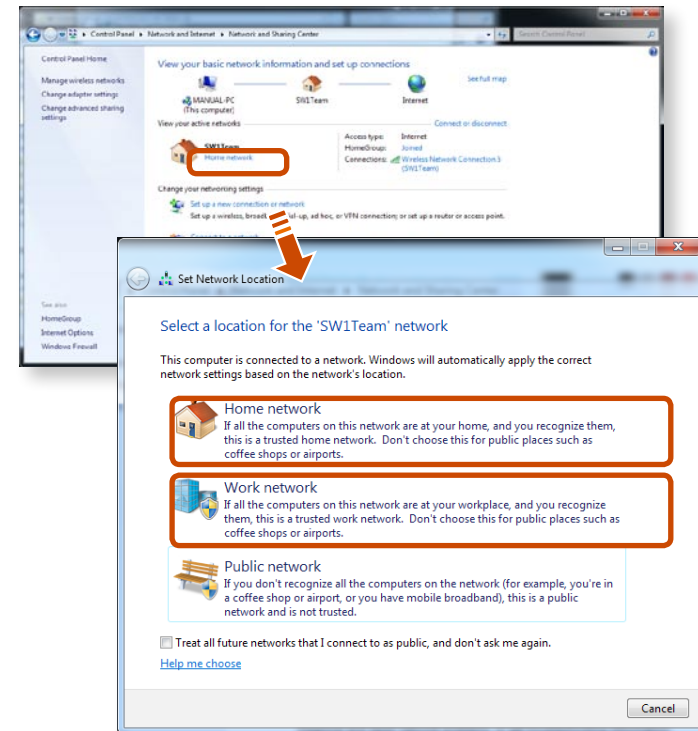
If no connected device is shown, check the following.

- A1** Check whether your TV supports **DLNA**. For more information on this, refer to the User Manual of your TV.
- A2** Check whether all devices connected to the access point are turned on.
- A3** Check whether your PC and TV are connected to the access point correctly.

**A4** Check whether the network location of your PC is set to **Home network** or **Work network**.

If not, click **Control Panel > All Control Panel Items > Network and Sharing Center > Public Network**.

Change the network location to **Home network** or **Work network**.

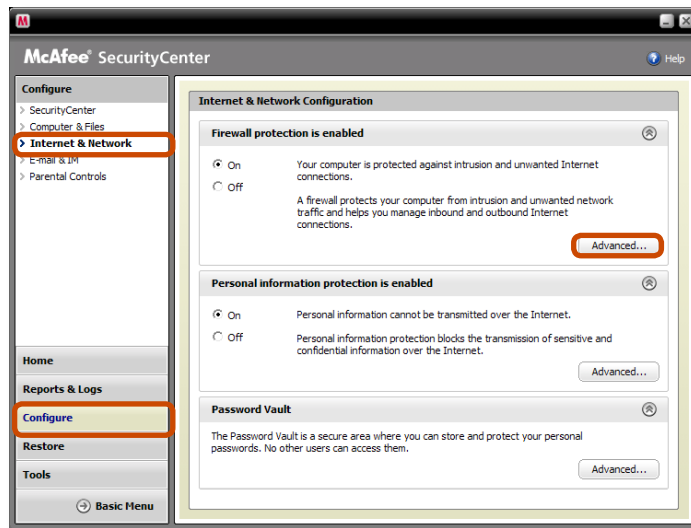


**A5** This problem may occur due to a vaccine program. (This is only applicable to models where **McAfee Security Center** is installed).

In this case, change the settings by following the steps below.

**1** Double-click the **McAfee Security Center** icon  to launch it.

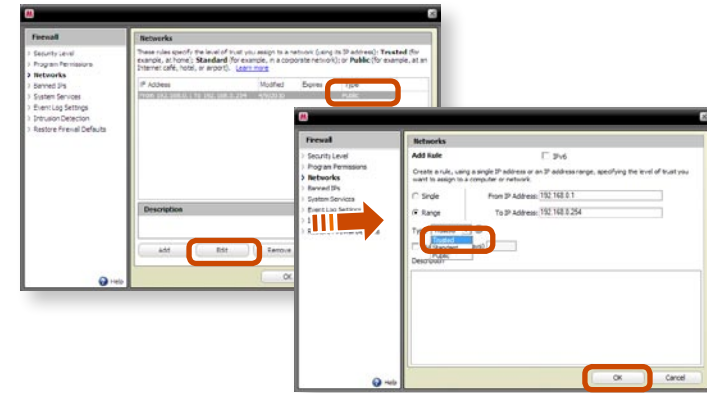
Click **Configure > Internet & Network > Advanced**.




**2** Select the Network menu item. In the Network pane to the right of the window, check whether the Type is set to **Trusted**.

If it is not set to **Trusted**, change it to **Trusted** by performing these operations:

Click **Edit** > Change the type to **Trusted** > Click **OK**.



**Q** My TV which has been used successfully with Easy Content Share is suddenly not shown in the list.

**A1** This is because the network is unstable. Click **Refresh**  to update the list of devices connected to the access point.

**A2** This problem may occur due to a vaccine program. (This is only applicable to models where McAfee Security Center is installed).

**Q.** Refer to answer **A5** for the question **Q**. **No connected devices are shown in Easy Content Share.**

**Q** Subtitles are not displayed when viewing videos on my TV.

---

**A** **Easy Content Share** does not support subtitles due to DLNA constraints. To enjoy videos with subtitles, you should install Samsung TV's bundled DLNA S/W (applicable to Samsung TVs only).

- 1 Install the DLNA S/W bundled with your Samsung TV on your computer.
- 2 Share the files you want to play using the Samsung TV's bundled DLNA S/W.  
(For more information on how to use Samsung TV's bundled DLNA S/W, refer to the User Manual of your TV.)
- 3 Run **Easy Content Share**. If the Samsung TV's bundled DLNA S/W you installed is listed in the remote server list of **Easy Content Share**, the sharing settings have been configured successfully.
- 4 In Easy Content Share, add the shared content of the Samsung TV's bundled DLNA S/W to the playlist. Now you can enjoy subtitles.

**Q** No screen is displayed when I try to view a video on my TV.

---

**A** If the format of the video is not supported by your TV, no screen will be output.

The same symptom also occurs when other playback devices except for your TV do not support the video format.

**Q** Do only the PC and TV have the DLNA function?

---

**A** Some cell phones, printers, photo frames and refrigerators, etc. support the DLNA function.

Devices supporting the DLNA function can share files with each other. Depending on each product, a product may only support sharing photos or music files. For detailed information on the DLNA functions, refer the user manual of each product.




## Chapter 5. Appendix

<b>Important Safety Information</b>	<b>110</b>
<b>Replacement Parts and Accessories</b>	<b>112</b>
<b>Regulatory Compliance Statements</b>	<b>114</b>
<b>WEEE SYMBOL INFORMATION</b>	<b>128</b>
<b>Product Specifications</b>	<b>129</b>
<b>Glossary</b>	<b>131</b>
<b>Index</b>	<b>135</b>

## Safety Instructions

Your system is designed and tested to meet the latest standards for safety of information technology equipment. However, to ensure safe use of this product, it is important that the safety instructions marked on the product and in the documentation are followed.

 Always follow these instructions to help guard against personal injury and damage to your system.

## Setting Up your System

- Read and follow all instructions marked on the product and in the documentation before you operate your system. Retain all safety and operating instructions for future use.
  - Do not use this product near water or a heat source such as a radiator.
  - Set up the system on a stable work surface.
  - The product should be operated only with the type of power source indicated on the rating label.
  - Ensure that the electrical outlet you are using to power your equipment is easily accessible in case of fire or short circuit.
- If your computer has a voltage selector switch, make sure that the switch is in the proper position for your area.
  - Openings in the computer case are provided for ventilation. Do not block or cover these openings. Make sure you provide adequate space, at least 6 inches (15 cm), around the system for ventilation when you set up your work area. Never insert objects of any kind into the computer ventilation openings.
  - Ensure that the fan vents on the bottom of the casing are clear at all times. Do not place the computer on a soft surface, doing so will block the bottom vents.
  - If you use an extension cord with this system, make sure that the total power rating on the products plugged into the extension cord does not exceed the extension cord power rating.