

Wireless Dock Cradle for iPod/iPhone

Model : HT-WDC10

Thank you for purchasing this product (HT-WDC10).

First, please update the main unit(HW-C450/C451) with connecting supplied USB to USB PORT back the main unit. When the main unit power is on. The power of the main unit is turned off automatically after the messages are displayed as a following order.

"UPDATE" → "M 0% ~ 100%" → "W 0% ~ 100%" → "OK".

Turn on the main unit and connect the iPod/iPhone to the Wireless transmitter.

Then Press O/A INPUT button on the remote control to select "iPod" mode.

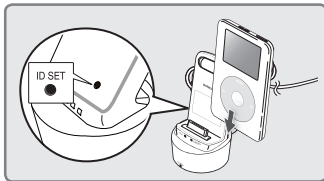
The INPUT mode of the main unit will switches as follows.

repeatedly press DIGI.1 → DIGI.2 → ANALOG → iPod

* If the iPod/iPhone does not automatically make wireless connection to the Hone Theater, ID setting must be made manually.

1. Turn off your Home Theater(HW-C450).
2. Press the hold "AV SYNC" button on the remote control for 5 seconds. The standby light on the HW-C450 will blink once.
3. Connect the iPod/iPhone to the Wireless transmitter.
4. Turn on the iPod/iPhone. Press the "ID SET" button on the back of the Wireless transmitter for 5 seconds. The link light on the wireless transmitter will blink fast.
5. Turn on your Home Theater(make sure the wireless transmitter's Link LED is ON). To listen to music from your iPod/iPhone over the Home Theater, select the iPod mode as the Home Theater's source.

* When iPod is connected to WDC10, both the Home Theater and the iPod Volume are operated together.



OPERATION STATUS OF THE WIRELESS TRANSMITTER'S LED

Display	Function	
	LINK (Blue LED)	STANDBY (Red LED)
LED ON	Pairing successfully completed	STANDBY
LED BLINK (Long blink)	Processing iPod/iPhone	LOW BATTERY
LED BLINK (Short blink)	Processing pairing	Pairing failed



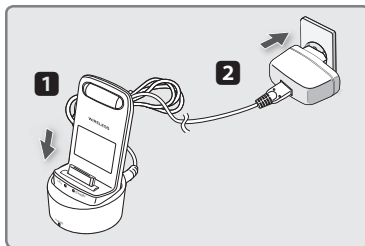
- If you use the main unit nearby a wireless device such as a laptop computer, an AP, or Wifi, any unstable operation error can happen.

Wireless Dock Cradle for iPod/iPhone

How to charge the Wireless Transmitter

1. Connect the Wireless Transmitter to the Charging Cradle.
2. Connect the DC power adaptor to a wall socket.
 - The charging indicator lights up and charging starts.
After the battery is fully charged, the charging indicator turns Green.

*** The Wireless Transmitter can be only charged by the supplied adaptor.**



OPERATION STATUS OF THE CHARGING CRADLE'S LED

Display	Function
GREEN LED ON	Power on /Charging completed
RED LED ON	Charging.

* The indication is the charging state of the built-in battery in iPod main Dock.
Check the charging state of iPod/iPhone by checking the charging indication of its battery.

iPod/iPhone MODELS THAT CAN BE USED WITH THIS PRODUCT

iPod nano 3rd generation (video)	iPod 5th generation (video)	iPod nano 4th generation (video)
iPod touch 1st generation	iPod touch 2nd generation	iPhone 3G
iPod classic	iPhone	



- "Made for iPod" means that an electronic

Made for
iPod iPhone

- accessory has been designed to connect specifically to iPod and has been certified by the developer to meet Apple performance standards.
- "Made for iPhone" means that an electronic accessory has been designed to connect specifically to iPhone and has been certified by the developer to meet Apple performance standards.
- Apple is not responsible for the operation of this device or its compliance with safety and regulatory standards.

Wireless Dock Cradle for iPod/iPhone

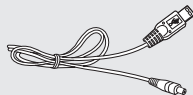
Accessories



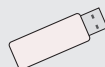
Wireless Transmitter



Charging Cradle



DC power code



USB
(only for update
HW-C450/C451)



DC power adaptor





- This USB memory use only for HW-C450/C451 firmware update. Samsung is not responsible for problems occurring due to using for other purposes.
- Be careful to keep the USB out of the reach of children, who might swallow it.

Specifications

Power Requirements	Adaptor : AC 110V 60Hz , Charging Cradle : DC 5V 1A
Power Consumption	5W
Weight	0.23 lbs (total)
Dimensions (W x H x D)	Wireless Transmitter : 1.6 x 3.5 x 1.1 inches Charging Cradle : 2.0 x 1.1 x 2.0 inches
Operating Temperature Range	+41°F to +95°F
Operating Humidity Range	10% ~ 75%
Charging time	90min ± 10min
Available running time	180min ± 30min (The time may differ under the condition of the iPod or the iPhone)

Safety Warnings

TO REDUCE THE RISK OF ELECTRIC SHOCK, DO NOT REMOVE THE COVER(OR BACK).
NO USER-SERVICEABLE PARTS ARE INSIDE. REFER SERVICING TO QUALIFIED SERVICE PERSONNEL.

	CAUTION RISK OF ELECTRIC SHOCK DO NOT OPEN	
The lightning flash and Arrowhead within Triangle is a warning sign alerting you of dangerous voltage Inside the product	CAUTION : TO REDUCE THE RISK OF ELECTRIC SHOCK, DO NOT REMOVE COVER (OR BACK) NO USER SERVICEABLE PARTS INSIDE. REFER SERVICING TO QUALIFIED SERVICE PERSONNEL.	The explanation point within the triangle is a warning sign alerting you of important instructions accompanying the product.

WARNING

- To reduce the risk of fire or electric shock, do not expose this appliance to rain or moisture.
- To prevent injury, this apparatus must be securely attached to the floor/wall in accordance with the installation instructions.
- If this power supply is used at 240V ac, a suitable plug adapter should be used.

CAUTION

- Apparatus shall not be exposed to dripping or splashing and no objects filled with liquids, such as vases, shall be placed on the apparatus.
- The Mains plug is used as a disconnect device and shall stay readily operable at any time.

This product satisfies FCC regulations when shielded cables and connectors are used to connect the unit to other equipment. To prevent electromagnetic with electric appliances, such as radios and televisions, use shielded cables and connectors for connections.

FCC and IC NOTE (FOR U.S.A and Canada):

This equipment has been tested and found to comply with the limits for a Class B digital device, pursuant to Part 15 of the FCC Rules and Canadian ICES-003. These limits are designed to provide reasonable protection against harmful interference in a residential installation. This equipment generates, uses and can radiate radio frequency energy and, if not installed and used in accordance with the instructions, may cause harmful interference to radio communications. However, there is no guarantee that interference will not occur in a particular installation.

If this equipment does cause harmful interference to radio or television reception, which can be determined by turning the equipment off and on, the user is encouraged to try to correct the interference by one or more of the following measures:

- Reorient or relocate the receiving antenna
- Increase the separation between the equipment and receiver.
- Connect the equipment into an outlet on a circuit different from that to which the receiver is connected.
- Connect the dealer or an experienced radio/TV technician for help.

Caution : FCC regulations state that any unauthorized changes or modifications to this equipment may void the user's authority to operate it.

Safety Warnings

FCC Compliance Information

This device complies with Part 15 of FCC Rules.

Operation is subject to the following two conditions:

- (1) This device may not cause harmful interference, and
- (2) This device must accept any interference received including interference that may cause undesired operation.

RF Radiation Exposure Statement

This equipment complies with FCC and IC RF Radiation Exposure limits set forth for an uncontrolled environment.

This equipment should be installed and operated with a minimum distance of 7.87 inches (20cm) between the radiator and your body. This transmitter must not be co-located or operating in conjunction with any other antenna or transmitter.

IMPORTANT SAFETY INSTRUCTIONS

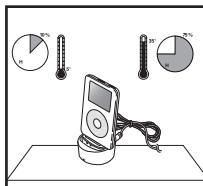
Read these operating instructions carefully before using the unit. Follow all the safety instructions listed below. Keep these operating instructions handy for future reference.

- 1) Read these instructions.
- 2) Keep these instructions.
- 3) Heed all warnings.
- 4) Follow all instructions.
- 5) Do not use this apparatus near water.
- 6) Clean only with dry cloth.
- 7) Do not block any ventilation openings, install in accordance with the manufacturer's instructions.
- 8) Do not install near any heat sources such as radiators, heat registers, or other apparatus (including amplifiers) that produce heat.
- 9) Do not defeat the safety purpose of the polarized or grounding-type plug. A polarized plug has two blades with one wider than the other. A grounding type plug has two blades and a third grounding prong. The wide blade or the third prong are provided for your safety. If the provided plug does not fit into your outlet, consult an electrician for replacement of the obsolete outlet.
- 10) Protect the power cord from being walked on or pinched particularly at plugs, convenience receptacles, and the point where they exit from the apparatus.
- 11) Only use attachment/accessories specified by the manufacturer.
- 12) Use only with the cart, stand, tripod, bracket, or table specified by the manufacturer, or sold with the apparatus. When a cart is used, use caution when moving the cart/apparatus combination to avoid injury from tip-over.
- 13) Unplug this apparatus during lightning storms or when unused for long periods of time.
- 14) Refer all servicing to qualified service personnel. Servicing is required when the apparatus has been damaged in any way, such as the power-supply cord or plug is damaged, liquid has been spilled or objects have fallen into the apparatus. Service is also required if the apparatus has been exposed to rain or moisture, does not operate normally, or has been dropped.

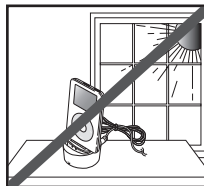


Safety precautions

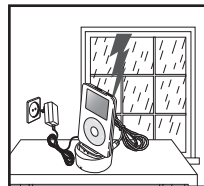
The following diagrams illustrate the precautions to be taken when using or moving your Wireless iPod Dock.



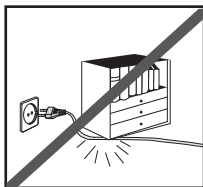
Ambient operating conditions:
Ambient temperature 41°F-95°F
Humidity 10-75%



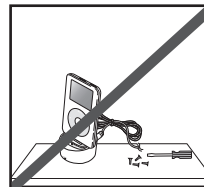
Do not expose the unit to direct sunlight or other heat sources. This could lead to overheating and malfunction of the unit.



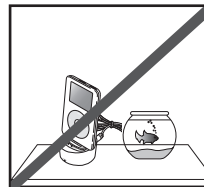
During thunderstorms, disconnect the main plug from the socket. Main voltage peaks due to lightning could damage the unit.



Do not place heavy items on the AC cord. AC cord damage can lead to damage of the equipment (fire hazard) and can cause electric shock.



Do not remove any equipment panels. The inside of the unit contains live components, which cause electric shock.



Do not let water or moisture enter the unit. Moisture entering the unit could lead to dangerous electric shock and can cause equipment damage. In such events immediately disconnect the main plug from the socket.