



Refer to setting up the advanced settings by clicking on the **Advanced** button.


Network authentication: The network authentication options include an Open System and Shared Key. When selecting Open Systems, no authentication is applied (however, encryption is supported). When selecting Shared Key, a WEP key is used for authentication. The default setting is Open System.

Data encryption (WEP): The IEEE 802.11 WEP (Wired Equivalent Privacy) standard defines two levels of encryption, a 64-bit key (this is sometimes represented by 40bits) and a 128-bit key.

Key index: Select the current encryption key index used by the access point out of 1 to 4.

Using an encryption key: Click **Use pass phrase** to activate, and enter 5 (for 64-bit) or 13 (for 128-bit) alphanumeric characters (represented by 0-9, a-z, or A-Z).

6. The Done window appears, click **OK**.

When a wireless connection to an access point is established, the connection icon () appears in front of the name of the connected profile.

Using Samsung Network Manager

Samsung Network Manager is a program that has been developed to enable users to use the network easily.

Samsung Network Manager provides the following features.

- **You can easily set up the network and printer settings.**
- **You can immediately use the network without defining new network settings again after moving locations.**
By setting the network settings (IP address, printer settings, etc.) for each location, you can immediately access the network without following network setting procedures each time regardless of your location.
- **You can easily share Internet Access.**
You can share your Internet connection by setting up a computer with 2 LAN interfaces (wired and wireless, or 2 wired LAN) as the sharing server. Then, you can access the Internet on a sharing client by connecting to the sharing server.
- **You can diagnose the network status.**
You can diagnose the network status when the network is not properly connected.

Using the Network

This section describes the procedures to connect to the Internet by setting up a network. The setting up procedures include the procedures to add a printer to the network.




The setting up procedures are different for wired and wireless LAN connections.

To use a wireless LAN, there should be a wireless LAN AP available nearby.

Setting Up a Network

1. To use a wired LAN, connect the LAN cable to the LAN port.

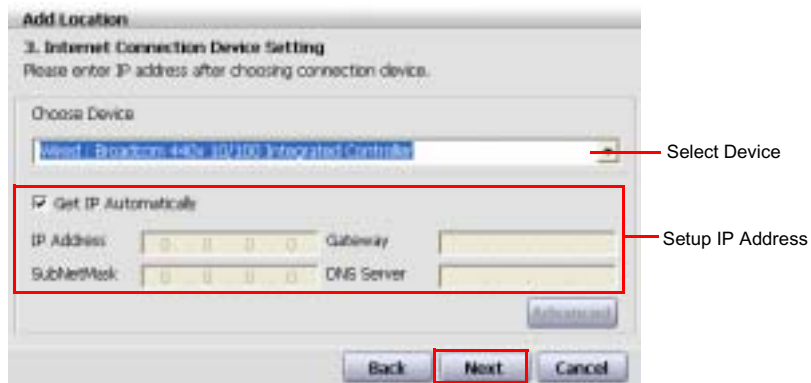
To use a wireless LAN, slide the Wireless LAN Latch into the ON position, if the wireless LAN is turned off.(p4)

When the wireless LAN is turned on, the Wireless LAN Operation LED () lights up.

2. Run Samsung Network Manager.
Select **Start > All Programs > Samsung > Samsung Network Manager > Samsung Network Manager** or double click the **Samsung Network Manager** icon on the Desktop.
3. Click the Add button.
4. Select a network location icon and enter the name of the location (e.g. Home).
Click the **Next** button.
5. Select **Internet direct connection** and click the **Next** button.



6. Select the LAN device, setup the IP address and click the **Next** button.



Select Device

Select a device to be connected to the Internet. Select either Wired LAN or Wireless LAN.

Setting up the IP Address

To allocate an IP address automatically (DHCP), select **Get IP Automatically**.

To use a static IP address, unselect **Get IP Automatically** and enter an IP address. For IP address information, ask your network administrator.

7. When the Printer Setting window appears, click **Finish**.

To add a printer, click **Add Printer**. The Add Printer Wizard appears. Set up the printer according to the instructions displayed on the screen.

When the printer has been added, click the **Show printer** button, select the newly added printer and then click the **Finish** button.

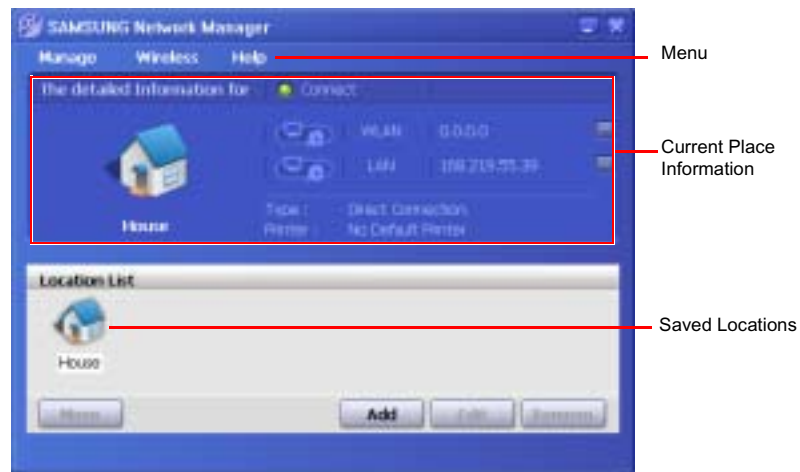


To not add a printer, select **No Default Printer** and then click the **Finish** button.

When the network setting is complete, the '**Do you want to move to newly added location now?**' message appears. If you select '**Yes**', the network settings for the added location are applied.

When the network settings for the added location are applied, the added place and the corresponding network connection information is displayed in **The detailed information for window**.


When the network setting is complete, an icon for the added location is created within the Saved Locations window. Now you can use the Internet or add a new network location.

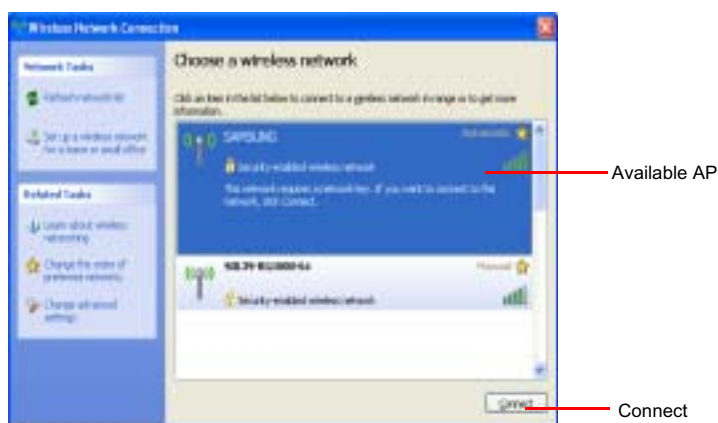




Wireless LAN AP Connection Procedures

To use a wireless LAN, first connect to a wireless LAN AP and then you can access the network even when moving location. Or moving location and then you can access the network even when connecting to a wireless LAN AP

1. Right-click over the **Wireless Network Connection** () icon on the Taskbar and click **View Available Wireless Networks**.
2. Click **Search AP** from the **Wireless** menu to search for wireless LAN APs. Select an available wireless network (e.g. SAMSUNG) and click the **Connect** button. For information on available wireless LAN APs, ask your network administrator.



3. The network key (security key) input window appears.
 - If a network key has been set for the wireless LAN AP, enter the network key and click the **Connect** button. For the network key information, ask your network administrator.
 - If no network key has been set for the wireless LAN AP, click the **Connect** button without entering the network key.
4. When the computer is connected to the wireless LAN AP, the **Connected** message will appear on the Wireless Network icon in the Taskbar.

Using the network after moving location

By setting the network settings (IP address, printer setting, etc.) for each location, you can immediately access the network without performing the network setting procedures regardless of your location.

1. Run **Samsung Network Manager** when connected to the Internet.

2. Select an icon that represents the corresponding location from the Saved Locations window and then click **Move**.
3. When the network settings of the selected location are applied, the new location and the network connection information are displayed in **The detailed Information for window**.

Sharing Internet Access

This section describes the procedures to share Internet Access.

To share Internet Access, you first have to set a sharing server and a sharing client. When the setup is complete, you can access the Internet from the sharing client by connecting to the sharing server.



Sharing Server : A computer with a direct connection to the internet and a local network connection.

Sharing Client : A computer that uses the Internet by connecting to a sharing server without itself having a direct connection to the Internet.


You can connect a sharing server and a sharing client as follows. (See Figure 5 on page (p74))

	Sharing Server		Sharing Client
	External Internet Device	Client Device	
Connection 1	Wired LAN	Wireless LAN	Connect a sharing client with the device that is the same as the client device of the sharing server.
Connection 2	Wireless LAN	Wired LAN	
Connection 3	Wired LAN	Wired LAN	

For Connection 3, you have to connect a LAN card in advance.

To connect a sharing server and a sharing client using a wired LAN, connect the computers with a crossover LAN cable or network hub first.

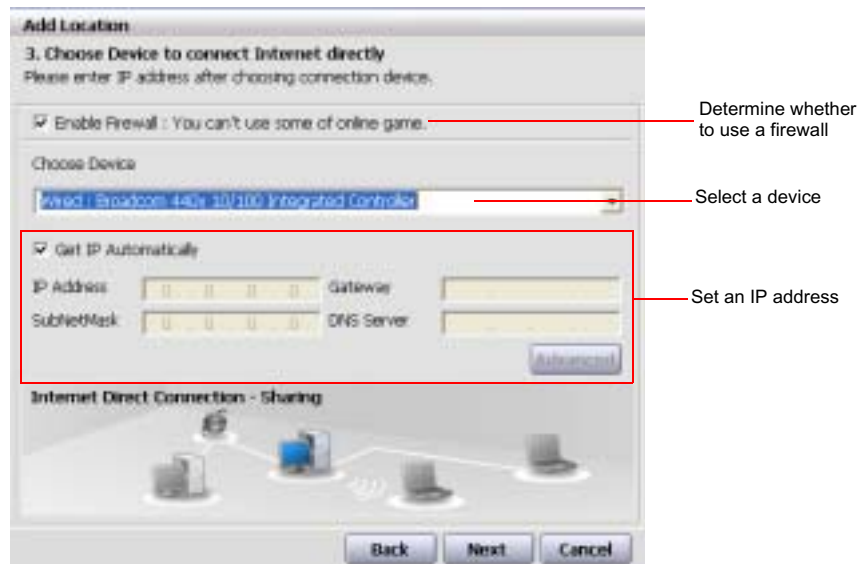
To use a wireless LAN, slide the Wireless LAN Latch into the ON position, if the wireless LAN is turned off.

When the wireless LAN is turned on, the Wireless LAN Operation LED () lights up.

As an example, Internet sharing procedures for **[Connection 1]**, which connect the sharing server and the Internet through a wired LAN and connect the sharing server and the sharing client through a wireless LAN, are described below.

Setting Up a Sharing Server

1. Run **Samsung Network Manager** on the computer to be used as the sharing server.
2. Click the **Add** button.
3. Select a network location icon and enter the name of the location (e.g. Home). Click the **Next** button.
4. Select **Internet direct Connection for sharing** and click the **Next** button.
5. Set up the network device to be connected to the external Internet. Determine whether to use a firewall and select a network device to be connected to the external Internet (e.g. Wired LAN). Set the IP address and then click the **Next** button.



- To protect against external intrusion attempts, using a firewall is recommended.
- For more information on selecting a device and setting the IP address, refer to the description of item 6 of "Setting Up a Network" on page 73.

6. Select a network device to connect to the sharing client (e.g. wireless LAN) and click the **Next** button.



To Share Internet Access through a Wireless LAN

- In the Select Device field, select **Wireless**.
- In the **Wireless Connection Name** (e.g. Samsung) field, enter the network name.
- To use the network key (security key), select the "**Use Password ,,,**" option and enter a network key. Remember the network key because you have to re-enter the key on the sharing client to connect to the sharing server.

7. The setup information is displayed. Confirm the settings and click the **Next** button.
8. When the Printer Setting window appears, click **Finish**.

For the printer setup procedures, refer to the description of item 7 of "Setting Up a Network" on page 73.

When the Shared Server setting is completed, set up the shared client.

Setting Up the Sharing Client

1. Run **Samsung Network Manager** on the computer to be used as a sharing client.
2. Click the **Add** button.
3. Select a network location icon and enter the name of the location. Click the **Next** button.
4. Select **Internet Sharing** and click the **Next** button.



- To connect through a wireless LAN, select **Internet Sharing - Wireless**.
- To connect through a wired LAN, select **Internet Sharing - Wired**.

5. Confirm the network device to be connected to the server and click the **Next** button.



- To connect through a wireless LAN, enter the **wireless connection name** (e.g. Samsung) you entered in the sharing server. If you have set a network key (security key) for the sharing server, enter the network key.

6. The setup information appears. Confirm the information and click the **Next** button.
7. When the Printer Setting window appears, click **Finish**.

For the printer setup procedures, refer to the description of item 7 of "Setting Up a Network" on page 73.

When the settings are completed, you can use the Internet on the shared client.



- To access the Internet from the sharing client, the sharing server has to be on.
- To use the Internet on the sharing client, select a sharing client icon from the **Location List** window and then click the **Move** button.
- If the connection is broken while using the Internet on the sharing client, click the **Ap Active** from the **Wireless** menu to reestablish the connection.

Network Status Diagnosis

You can diagnose the network status when the network is not properly connected.

1. Run **Samsung Network Manager**.
2. Select **Auto Diagnosis** from the **Manage** menu.
3. The Network Connections figure window appears. Click the **Start** button to start the network diagnosis.
4. When the diagnosis is complete, out of order devices are marked by the exclamation mark icon. For detailed device status, read the description in the lower part of the window.

Reconnect and set up the device according to the diagnosis result.



Using Network Services

While the computer is connected to the network, you can use network services to share files, folders, and printers.



Network services are provided for the computers that are connected to the network through wired or wireless network connections. For details, see “Connecting Through a Wired LAN” on page 63 and see “Connecting Through a Wireless LAN (Optional)” on page 65.

Sharing files or folders

This section describes how to share files and folders between computers connected to the network.

To share files, complete the following procedures:

- Step 1. Configuring the sharing of files and folders on a computer.
- Step 2. Accessing shared files and folders from another computer.



When a file or folder is shared, anyone connected to the network can open and delete the shared file or folder.

Configure a file sharing network only when the network is secure, and do not share important data.

Step 1. Configuring Sharing

1. Right-click the target file or folder to share in My Computer, and select **Sharing and Security**.



2. Click 'If you understand the security risks but want to share files without running the wizard, click here'.



It has the same security effect as that of the 'Network Setup Wizard'. This screen does not appear if Internet Sharing Network Wizard has been installed in the computer-to-computer wireless network environment.

3. Select 'Just enable file sharing', and click **OK**.
4. In the 'Network sharing and security' field, select 'Share this folder on the network', enter the share name, and click **OK**.



Be cautious when selecting 'Allow network users to change my files' since other network users can change the files in the shared folder.

The file and folder sharing configuration has been completed.

Step 2. Using Shared Files or Folders

This section describes how to access shared files or folders if your computer is a member of the same workgroup.

1. Double-Click **My Network Places** of desktop under Other Places.
2. Click '**View workgroup computers**', and click the desired computer to access the shared file.



If your computer is a member of another workgroup:

1. Click Other Places > Microsoft Windows Network.
2. Click the desired workgroup.
3. Click the desired computer to display the shared files or folders.

Sharing Printers

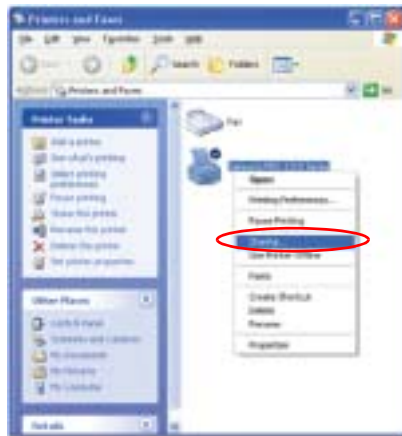
This section describes how to share a printer between computers connected to a network.

To share a printer, complete the following procedures:

- Step 1. Configure printer sharing in the computer connected to the printer.
- Step 2. Add and use the shared printer in other computers on the network.

Step 1. Configuring Printer Sharing

1. From the computer connected to the printer, click **Start > Printers and Faxes**.
2. Right-click the printer you want to share, and click **Sharing**.



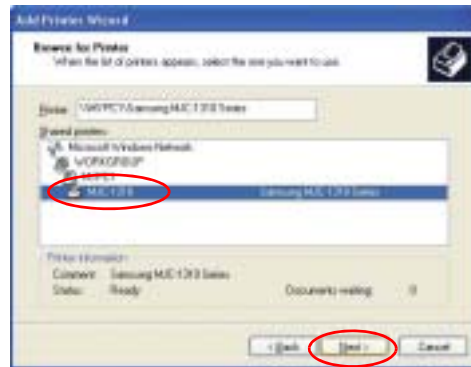
3. Select 'Share this printer', enter a share name for the shared printer, and click **OK**.
4. In the Printers and Faxes window, you will find the printer icon has been changed to another icon on a hand.



Step 2. Adding and Using a Shared Printer.

1. From a different computer that wants to use the shared printer, click **Start > Printers and Faxes**.
2. Click **Add a printer**.
3. In the Add Printer Wizard, click **Next**.
4. Select 'A network printer, or a printer attached to another computer', and click **Next**.
5. Select 'Browse for a printer', and click **Next**.

6. Select the workgroup or computer, select the desired printer, and click **Next**.



If you cannot find the desired printer, try again after a while.

7. Read the warning about a shared printer, and click **Yes** to install the shared printer.
8. Select **Yes** for 'Do you want to use this printer as a default printer?', and click **Next**.
9. Click **Finish**.
10. When the printer sharing configuration has been completed, the shared printer appears in the Printers and Faxes window.



Now you can print using the shared printer even if your computer is not directly connected to a printer.

Using Bluetooth Devices (Optional)

Bluetooth is a wireless communication technology that allows access to devices nearby such as a computer, mobile phone, printer, keyboard or mouse without a cable connection. Bluetooth enables file transmissions, Internet access, a private area network function, and access to a keyboard, mouse and printer between devices supporting the Bluetooth function without a cable connection.



The Bluetooth function is only available between devices supporting Bluetooth (computers, mobile phones, PDAs, printers, etc.), and the function may be restricted depending on the device profile.

The Bluetooth function is optional and may not be supported depending on your model.

Bluetooth Functions

- **File Transmission** (📁)

You can exchange files between 2 Bluetooth devices. You can exchange files with other computers, mobile phones, PDAs, etc.

- **Network Access** (🌐)

You can connect to another computer with the Bluetooth function as you access a wireless LAN in Ad-Hoc mode or connect to the Internet through an AP or Internet Connecting Sharing Server.

- **Network Access through a Phone Connection** (📞)

You can connect to the Internet through a Bluetooth mobile phone.

- **Data Sync (Synchronization)** (🔄)

You can synchronize the PIMS data (Outlook E-mail address data) with mobile phones, PDAs, notebook computers, etc. supporting Bluetooth.

- **Electronic Business Card (Vcard) Exchange** (👤)

You can exchange electronic business cards with mobile phones, PDAs, notebook computers, etc. supporting Bluetooth.

- **Sound Output** (🔊)

You can listen to audio from the computer through another Bluetooth device or listen to audio of another Bluetooth device through the computer.

- **HID Connections** ()

You can connect a keyboard, mouse, joystick, etc. supporting Bluetooth.

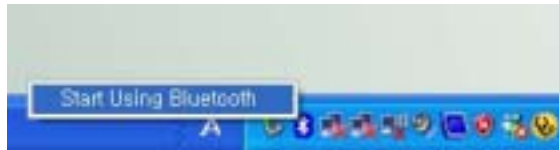


For more information about using the Bluetooth function, refer to the online help of the Bluetooth Device.

Bluetooth Software Setup

Bluetooth software is installed on some models. To use the Bluetooth function, you have to setup the Bluetooth software first. Set the software up as follows when using the function for the first time.

1. Right-click the **Bluetooth** icon() on the bottom right Taskbar using the mouse(or touchpad) and select **Start Using Bluetooth** from the pop-up menu.



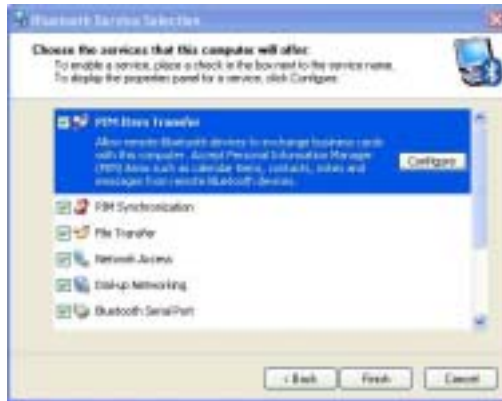
2. Click the **Next** button to start setting up.



In the setting up steps, enter a device name to be displayed in the Bluetooth Manager program. Enter a **Name** in the Computer Name field and select **Laptop** for the Computer Type field.



Also, a step appears for selecting the services to be provided by your Bluetooth device for other Bluetooth devices. At this point, the program automatically detects available services and displays them as selected. It is recommended not to change the default selection.



If you change the service settings, the driver necessary for the additionally selected services are installed.

At this point, a warning message may appear informing you that there is no Microsoft logo. Since it does not affect the operation, continue the installation.

3. If the driver installation is complete, the next step proceeds which searches for nearby Bluetooth devices. Since you do not have to search while setting up, click the **Skip** button and finish the settings.



4. When the settings are complete, the **Bluetooth** icon menu of the notification area changes as shown in the figure.



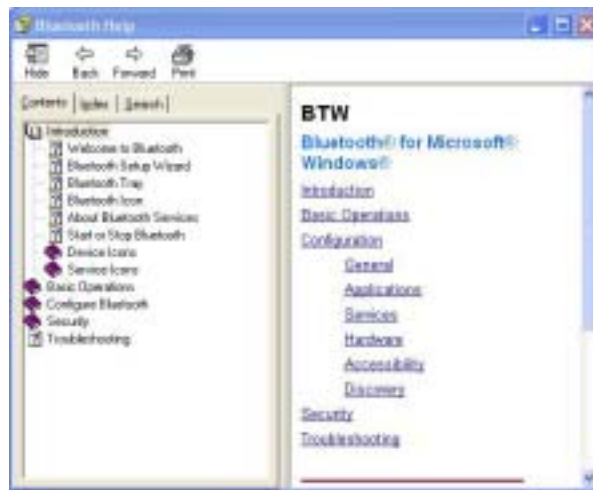
Using Bluetooth

Describes how to exchange files between computers supporting Bluetooth and how to use other Bluetooth devices.

Bluetooth Help

Bluetooth Help provides detailed procedures on using Bluetooth functions.

Click on **My Bluetooth Settings** on the **Desktop** and press the **F1** key (Help).

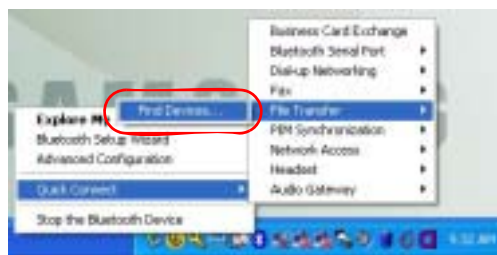


Select Start > Help and Support > Networking and the Web > Networking > Wireless networking > Bluetooth devices (wireless) to view Windows Help.

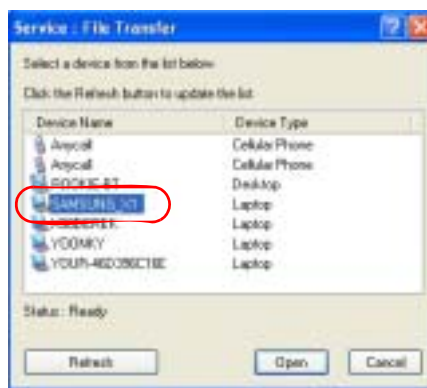
Exchanging Files between Bluetooth computers

The procedures to exchange files and folders between Bluetooth computers are described below.

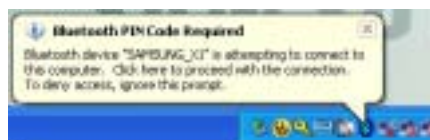
1. On the computer that is sending a file (hereafter Computer A), right-click the **Bluetooth** icon (📶) in the notification area and select **Quick Connection > File Transmission > Search for Device**.



2. In the Select Device window, click on a computer to be connected (hereafter Computer B).



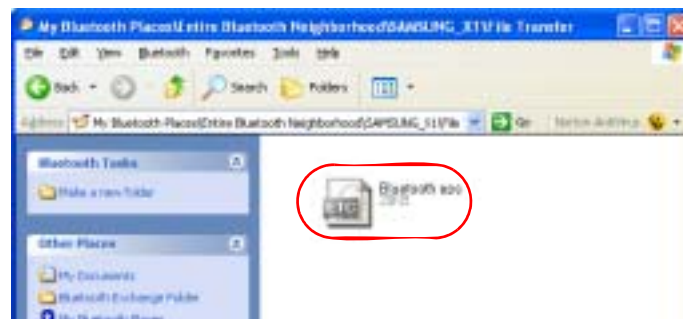
3. If the **Bluetooth PIN code requested** notification window appears on the bottom right taskbar, click on the window, enter the **Bluetooth PIN code** and click the **OK** button.





The **Bluetooth PIN Code** is a password used for the connection between two Bluetooth devices, the user just enter the same PIN Code (E.g. same numbers) on both Bluetooth devices to make a connection.

4. After a short while, the **Bluetooth PIN Code required** dialog box appears on Computer B, enter the code that you have entered in Step 3 above.
5. If the FTP File Access Privilege Request window appears on Computer B, click on the window. If the Select Access Permission window appears, click the **OK** button.
6. The file transmission window appears on computer A. Drag files or folders to send onto the window, and the files or folders are automatically transmitted.



7. If the file transmission is complete, close the File Transmission window.
When clicking on **Start > My Documents** on the computer to which the files are transferred, the **Bluetooth Exchange Folder** appears which includes the transmitted files.

Connecting Keyboard, Mouse, Joystick and Headset devices

The procedures to use Bluetooth HID devices (keyboard, mouse, joystick, etc.) or a headset, etc. on the computer are described below.



The Bluetooth PIN Code is a password used for the connection between two Bluetooth devices, the user just enter the same PIN Code on both Bluetooth devices to make a connection.

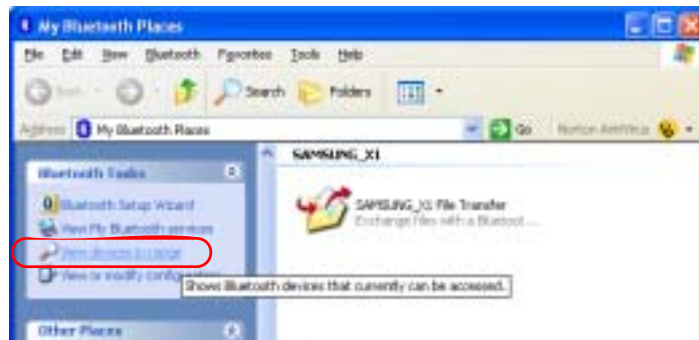
1. Turn on the Bluetooth function on the device to connect to (mouse, keyboard, joystick or headset).

Some devices have a button to turn on the Bluetooth function, so refer to the corresponding device manual.

2. Double-click on the **My Bluetooth Settings icon** () on the Desktop.

3. If the **My Bluetooth Settings** window appears, click on **View Devices within Coverage**.

If the device to connect to appears, click on the device. (E.g. mouse)




If the device does not appear, click the **View Devices within Coverage**. If the device has not appeared yet, since this menu changes to **Search Devices within Coverage**, click the **Search Devices within Coverage** to show the device.

4. If the **Bluetooth PIN Code** input window appears, enter a PIN code referring to the manual of the corresponding device. The PIN code for an HID device is generally printed in the manual of the corresponding device.
5. If you enter the PIN code, you can immediately use the device.



A Bluetooth keyboard and mouse work only in Windows. They will not work in MS-DOS mode or in Hibernation mode.

Stopping a Bluetooth device

Right-click the **Bluetooth** icon () on the taskbar and select **Stop the Bluetooth device**.



To use a Bluetooth device after stopping it, select **Start Bluetooth device** as above.

Use Instructions

- Bluetooth devices must be within a 3m distance.
- For a better communications environment, use the devices in an open space where no wall or obstacle exists.
- For a telephone connection, data synchronization, electronics business card exchange, fax transmission/reception, sound related functions, and serial port function, you can connect with only one Bluetooth device.
- Using the network connection or file transmission function, multiple Bluetooth devices can be connected. However, since connecting with multiple devices may slow down the data rate or make the connection unstable, connecting with one device at a time is recommended.
- The Bluetooth function of a Bluetooth PDA, mobile phone, mouse or keyboard may be turned off. To use them in connection with a Samsung computer supporting Bluetooth, you must check if the Bluetooth function of the device to connect to is turned on.

For the procedures on turning on the Bluetooth function of a device, refer to the manual of the device.

- The services provided by Bluetooth devices may vary depending on their capability. For the services provided by Bluetooth devices, refer to the manual of the device.

Customizing Your Computer

Using System Setup

The System Setup (BIOS) program enables you to configure your computer hardware and set security and power-savings options. The settings you choose are stored in battery-maintained CMOS memory that saves the information even when the computer's power is turned off. When your computer is turned back on, it is configured with the values found in this memory.

Run System Setup if you get a message prompting you to run the program. You may also want to run System Setup, particularly the first time you use your computer, to set the time and date, use security or power-management features, or alter the settings of other features.



BIOS Caution:

If you are not familiar with BIOS setup and what the parameters mean, seek help from a person who is knowledgeable. Incorrect settings may cause your system to malfunction or "Crash".



Your computer's version of System Setup may not include all the fields listed here or may include additional fields. Field names and order of appearance can vary according to the version of the BIOS (basic input/output system) on your computer.

Starting System Setup

To start System Setup, turn on your computer and then press <F2> and hold until the System Setup screen appears.

Table 2. System Setup Menus

Menu	Function
Main	Changes the basic system.
Advanced	Configures advanced features on your computer.
Security	Enables security features, including passwords.
Boot	Specifies the order of boot devices and configures boot features.
Exit	Specifies how to exit System Setup.

To open the menu you need to use, use the left or right arrow keys to select the menu name.

Table 3. System Setup Navigation Keys

Navigation Key	Function
<F1>	Displays the General Help window.
<Esc>	Exits the current menu.
< ↑ > or < ↓ >	Moves the cursor up and down between fields.
< ← > or < → >	Selects different menus. Pressing the <Esc> key at the Main menu brings you to the Exit menu.
<F5>	Scrolls backwards through the options for the highlighted field.
<F6>	Scrolls forward through the options for the highlighted field.
<F9>	Sets the parameters for the current menu to their default values.
<F10>	Save changes and exit system setup.
<Enter>	Executes commands or opens a submenu.

Changing Booting Priority

You can select the booting priority among the devices such as the hard drive, CD-ROM drive, etc. The following example describes how to configure the hard drive as the first booting device when the CD-ROM drive is configured as the first booting device by default.

1. Select the **Boot** menu in System Setup.
2. Press <Enter> on **Boot Device Priority** item.
3. Use < ↓ > key to move to the **Hard Drive** item, and press <F6> until it is at the very top.
4. Press <F10> to save the changed configuration, and exit System Setup.

Now you can boot the system with the hard disk drive as the first booting device.

Configuring the Password

Setting the Supervisor Password

By configuring a supervisor password, you can restrict system access to authorized users only.



Do not lose or forget your password. If you have forgotten your password, contact the Samsung service center.

1. Select the Security menu in the System Setup. To enter System Setup, see “Starting System Setup” on page 95.
2. On the **Set Supervisor Password** item, press **<Enter>**.
3. Enter a password, press **<Enter>**, re-enter the password for confirmation, and press **<Enter>** again.
4. When a message confirming the password configuration appears in the [Setup Notice] window, press **<Enter>**.

Setting the User Password

You can configure user passwords so that other users can use the system.



Before configuring a user password, a supervisor password must have been configured.

Users can start the system with their user password, but cannot enter into the System Setup.

Deactivating the supervisor password also deactivates the user password.

On the **Set User Password** item, press **<Enter>**, and complete step 3-4 of "Setting the Supervisor Password".

Activating the Booting Password



Before activating the booting password, the supervisor password must have been configured.

Set the **Password on boot** option to [Enabled].

From now on, system booting will not proceed without the password.

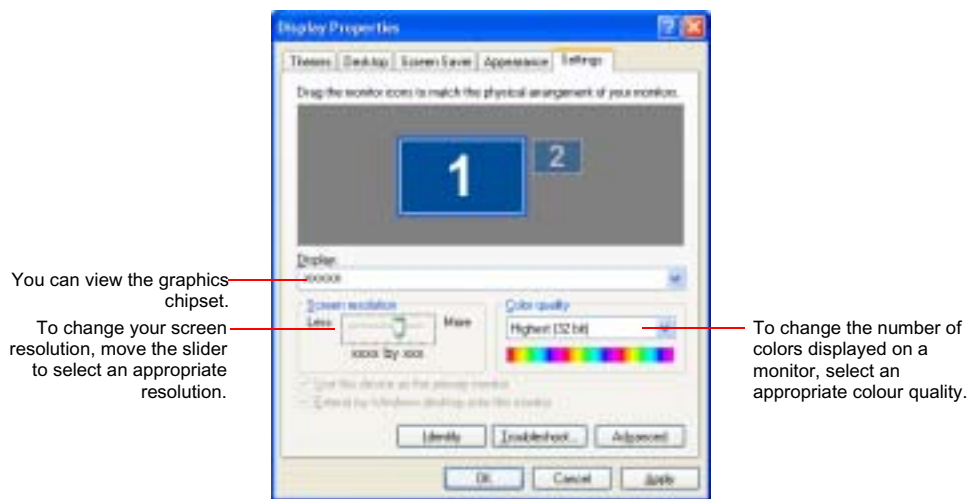
Deactivating the Password

1. On the password to delete, press **<Enter>**. (e.g. supervisor password)
2. Enter the current configured password, and press **<Enter>**.
3. Leave the 'Enter New Password' and 'Confirm New Password' field empty, and press **<Enter>** to deactivate the password.

Configuring Resolution and Color Depth

Screen resolution is the number of pixels displayed on the screen. High resolution makes the overall screen area large, although individual items appear small. Color quality is determined by the number of bits used to represent a pixel on the screen. High color quality displays more number of colours on your screen.

1. Select **Start > Control Panel > Appearance and Themes > Change the screen resolution.**
2. Make changes on the **Settings** tab of the [Display Properties] dialog box.



Graphics Chipset Information

You can view the installed graphics chipset in the Display Properties window.

- ATI Mobility Radeon X1300/X1400/X1600
- Intel 945GM Graphics (DVMT)

3. When you have completed configuration, click **Apply**.



The following resolution and color quality settings are recommended depending on the LCD screen of the system.

- WXGA: Screen resolution: 1280x 800, Color quality: Very high (32bit)
- WSXGA+: Screen resolution: 1680 x 1050, Color quality: Very high (32bit)

Using External Display Devices

Using external display devices such as monitors, projectors, TVs, etc allows you to view screen images alternatively or simultaneously on each device. Additionally, you can extend the screen onto two display devices to use a larger workspace. Using external display devices is especially useful when you are giving a presentation or watching a movie through your TV.

Switching Display Devices Using the Shortcut Key

You can watch the screen through either the LCD or an external display device, or you can even watch the screen through both the LCD and an external display device simultaneously.

1. Connect the external display device (e.g. a monitor or a projector) to the corresponding port of the system. To connect a TV, connect the TV to the TV output port of the system.
2. If you press the <Fn>+<F4> key combination once, the **Samsung Display Manager** screen appears where you can select a screen.

Whenever you press the <F4> key while pressing the <Fn> key, selection moves to the next item. Select a mode.



Example) Select LCD+CRT



- LCD: Notebook Screen
- CRT: External Monitor Screen
- LCD+CRT: Notebook + External Monitor Screen
- TV: TV Screen (connected to the TV OUT port)

In the MS-DOS environment, the picture is displayed to the LCD > CRT, in turns, and output to a TV/DVI is not supported. In full screen MS-DOS mode of Windows, you cannot change the display device by pressing the shortcut key.

Using Dual View to View Extended Screen

You can expand the screen into two display devices and work conveniently in separate workspaces.

In Dual View mode, you can select the screen resolution and colour quality for each display device, as if there were two separate graphics cards.

1. Connect the external display device (e.g. a monitor or a projector) to the corresponding port of the system. To connect a TV, connect the TV to the TV output port of the system.
2. Press touchpad right button on the desktop, click **Properties**, and then click the **Settings** tab.
3. Click the monitor '2' icon, select the 'Extend my Windows desktop onto this monitor' check box, and then click **Apply**.



4. When the configuration is complete, click **Identify** on the left side of Troubleshoot. The primary display device (the LCD) is indicated as '1', and the secondary display device is indicated as '2'.

Now you can view the screen through two monitors.



1 : Primary



2 : Secondary



When you use Dual View, configuring the LCD as the 'Primary' monitor is recommended.



If the screen of the secondary display device is displayed at 640x480 pixels, with 256 colours, change the settings to the desired screen resolution and colour quality in the [Display Properties] dialog box.



When Dual view is not properly set up, refer to Q&A. (p122)

Deactivating Dual View Mode

Click the monitor '2' icon, clear the 'Extend my Windows desktop onto this monitor' check box, and then click **Apply**.



To move a window between display devices in Dual View mode

Click the title bar of the window in the primary display device (1, the LCD), and drag it to the secondary display device (2). The window is moved to the secondary display device.

System Management

Using Power Management Options

Your computer includes **Power Management** options that can help the battery charge last longer and extend the life of the battery. Power-management options will slow down or shut off system components when the components are not being used.

Power management may slow down system performance. Your computer runs fastest with the power cord attached, whereby power management is disabled.

In the next sections, basic and advanced methods of power management will be discussed.

Basic Power Management Schemes

This section discusses the basic schemes of power management when the computer is operating on battery power or using AC power.



Standby vs. Hibernation


Hibernation is a state where the contents of memory are stored in a special file on the hard disk, and Standby simply keeps a small holding current through the memory to keep the data. You are more likely to sustain loss of data in Standby mode so it is recommended to save all open files before entering Standby.



Changing Devices:

Do not change PC Cards while in standby or hibernate modes.

To enter the power management window complete the following:

1. Click **Start > Control Panel > Performance and Maintenance**.
2. Click  icon to display the **Power Options Properties** window.

3. Click the **Power Schemes** tab to display the basic power management options.



By default, the power scheme is configured to BatteryMgr-normal mode. BatteryMgr-normal mode extends the battery life and optimizes the Intel Speedstep function. Since the CPU power consumption is automatically optimized to conserve power when the computer is operating on battery power, an application may be executed slower than when it is operating on AC power. To use BatteryMgr-normal mode after reinstalling Windows, install the Battery Manager program using the system software Media.

4. Select the time that you wish each of the following actions to occur in **Battery** and **AC power** mode.
- Turn off monitor
 - Turn off hard disks
 - System standby
 - System hibernates

Turning off the monitor and HDDs will save a substantial amount of battery power, therefore when in battery only mode select the shortest time practical.



You can also reserve Turning Computer Off, Hibernation state, Hold Mode, etc. by selecting **System > Computer Scheduling** in the EasyBox program. (see "Using EasyBox" on page 37.)

If you change the power settings in the Battery Manager program, the settings of the '**Power Options Properties**' window are automatically changed accordingly ("Using the Battery Manager" (p110)).

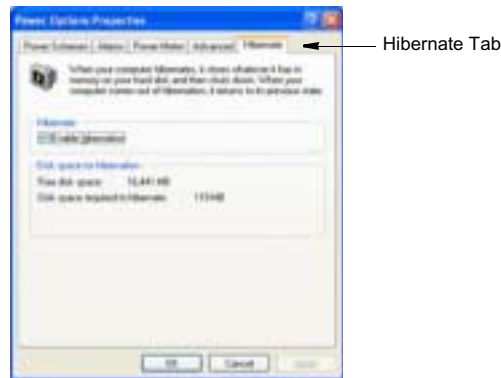
Hibernate Mode (*Power Management or Manual Method*)

When hibernation is used, your computer turns off and when you power up again, everything is restored exactly as you left it—including programs and documents you may not have saved or closed. Everything in memory gets saved to the HDD, and the monitor and hard disk get turned off.



If You Reinstall Windows:

You should re-establish hibernate in power options by opening **Power Options Properties** window and click on the **Hibernate** tab then click “Enable Hibernation”.



Frequent Interruptions:

If you experience frequent interruptions, you might also consider putting your computer into automatic hibernation after a specified number of minutes using the power management options.

Standby Mode (*Power Management or Manual Method*)

Standby is used mainly for conserving battery power in your notebook computer. It also gives you the benefit of getting right back to your work without waiting for the computer to restart. Standby turns off your monitor and hard disks, placing your entire system in a low-power state. When you return to your computer, restores your desktop exactly as you left it. It is recommended that you do not enter standby mode with less than 20% battery power.

5. Click **OK** to set your power management options and close the window.




Rest Key:

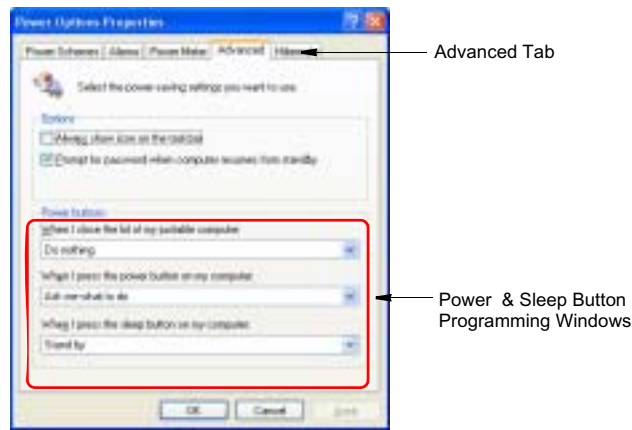
The manual **<Fn>+<Esc/ >** key combination will not activate Standby or Hibernate modes while you are playing a multimedia program or have an active USB device connected.

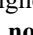
Advanced Power Management Schemes

This section discusses the advanced power management schemes. There are two buttons that you can use to manually conserve power.


To enter the power management window complete the following:

1. Click **Start > Control Panel > Performance and Maintenance**.
2. Click  icon to display the **Power Options Properties** window.
3. Click the **Advanced** tab to display the advanced power management options.



4. Select the mode (**Do nothing/Ask me what to do/Standby/Hibernate/Shut down**) assigned to the Power button and/or Rest <Esc/  > key. Also select the action (**Do nothing/Standby/Hibernate**) associated with closing the computer lid.



The "Rest" key is assigned to the <Fn+Esc/  > key combination. "Basic Power Management Schemes" on page 103 for a better understanding of Standby and Hibernate modes.

5. Click **OK** to set your power management options and close the window.

You can return to normal operation after you have used one of the "Power Management" buttons by quickly pushing and releasing the **Power** button.

Using the Battery

Please refer to the following instructions when running the computer on battery power without connecting the AC power.



Precautions


- Use only chargers specified in the User Manual.
- Never heat the battery pack, put it near or in a fire or use at a temperature higher than 60°C, as this may cause fire.
- Never cause a short circuit between the battery pack terminals or disassemble the battery pack.
- Carefully read and follow the precautions printed on the battery and the safety instructions in the User Manual before using the battery.

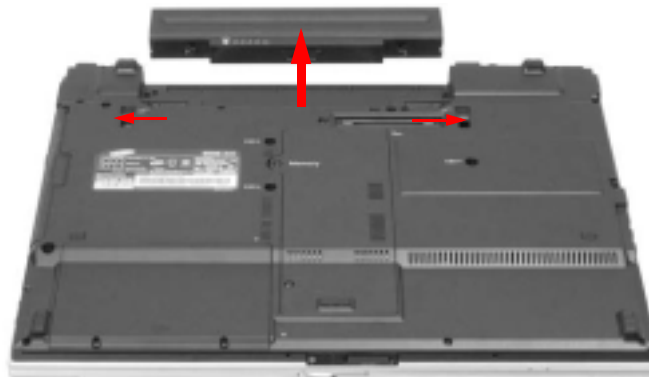


Please read the instructions on the battery before use.

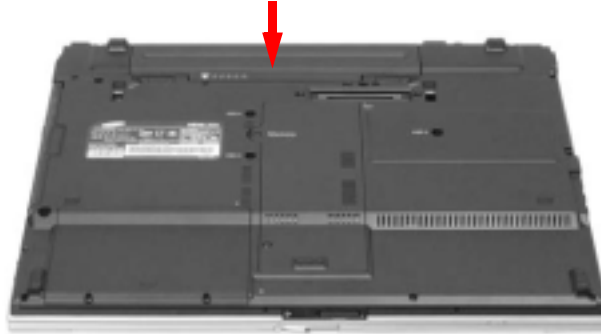
Please refer to the system operation environment (p151) of this manual and operate and store the battery at room temperature.

Ejecting and Attaching Battery

1. Shutdown the system and close LCD.
2. Put the computer upside down on a flat surface.
3. Pull the two battery latches outward. , then remove the battery.



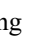
4. To install the battery again, slide the battery into the system as below. The battery latches move inward, and fix the battery automatically.



Monitoring the Battery Charge

You can view the battery charge status by completing the following procedures.

To use the shortcut key to view

If you press the <Fn>+<F2/  > key combination on the keyboard, the remaining battery charge appears on the screen for a while. It appears only when the Samsung Display Manager program is installed on your computer.

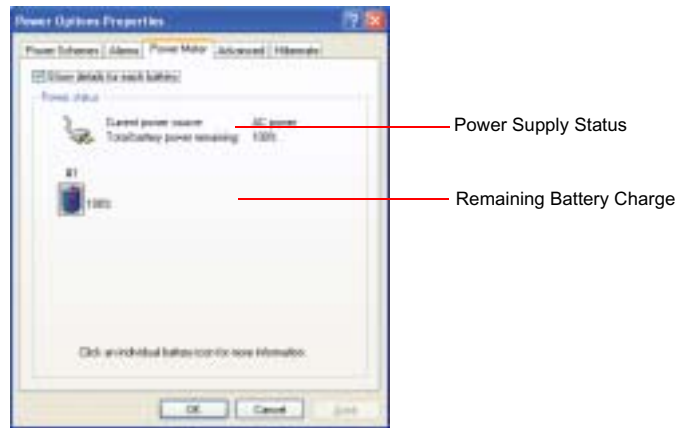
To view on the battery

Click the PUSH button on the battery. The remaining battery charge (%) will be displayed.



To view through the Control Panel

Select **Start > Control Panel > Performance and Maintenance > Power Option > Power Measure** tab. Then you can view the current power source and the current remaining battery charge.



Using the battery

Battery is an expendable supply, so when you use it for a long time, the capacity/battery life is shortened. If the battery life is reduced to under half of the initial time, we recommend that you purchase a new battery to use.



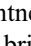
Battery Warning

You will hear an alarm when the remaining battery charge is under 10%. Connect the power cable or turn off the computer and install a fully charged battery.

When the remaining battery charge is under 3%, the computer automatically saves current work and turns off. This may be different according to the settings in **Control Panel > Performance and Maintenance > Power Options > Alarms** tab.

Extending the battery use time

Decreasing the LCD Brightness

Decreasing the LCD brightness by pressing the <Fn>+<  > key combination on the keyboard or adjusting the brightness in the Battery Manager program extends the battery use time.

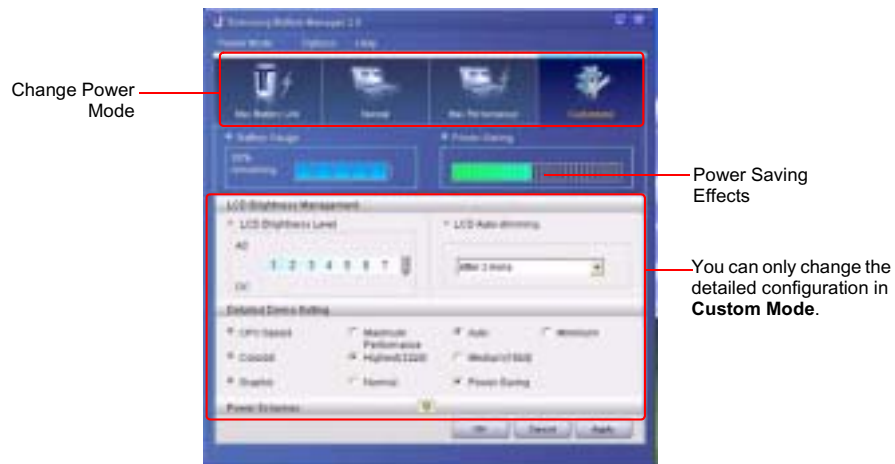
Decreasing the LCD brightness by one level extends the battery use time by 3~5% (10~20 minutes). (The battery use time is determined by the corresponding model.)

Using the Battery Manager

Battery Manager is a power management program that enables using battery power efficiently.

You can easily change the power mode by selecting an optimized power mode and manually optimizing the battery use time by setting each option.

Click on **Start > All Programs > Samsung > Samsung Battery Manager > Samsung Battery Manager**.



- **Maximum Battery Saving Mode** : This mode is appropriate for conditions which require the maximum battery use time. This may degrade the performance of the system.
- **Normal Mode** : This mode is appropriate for normal conditions. Both system performance and battery use time are optimized.

- **Maximum Performance Mode** : This mode is appropriate for conditions that require maximum system performance. Therefore, the battery usage time may be reduced in this mode.
- **Custom Mode** : In this mode, a user can configure a detailed configuration to save the battery usage time. You can adjust the LCD brightness, the system standby time, the screen color quality, and the graphic mode values.



Power Saving Effect

This shows the relative battery use time for each power mode. The more effective the power saving, the longer the graph will appear.

When Running a Game or Multimedia Application

A game or multimedia application may not work smoothly in Maximum Battery Saving Mode. Using this is recommended when the AC adapter is connected or in Normal or higher modes.

Turning Off Unnecessary Devices

Turning off unnecessary devices extends the battery use time.

Select the **Start > Control Panel > Performance and Maintenance > System > Hardware** tab and click **Device Manager**. Right-click a device you are not using, and select 'Disable' (e.g. wireless LAN, 1394 , etc.)

Battery Calibration

If you charge/discharge the battery repeatedly for only a short time, the battery use time may be reduced by the difference between the actual battery charge and the remaining charge display. In this case, the actual battery charge and the remaining charge display will be same by discharging the battery completely using the Battery Calibration function, and then recharging it again.

1. Disconnect the AC power adapter after turning off the system.
2. Restart your computer and press <F2> to enter BIOS setup.
3. Using the arrow keys, highlight Smart Battery Calibration in the Boot menu. The Battery Calibration function is activated and the battery is discharged forcibly. This operation requires 3~5 hours depending on the battery capacity and the remaining battery charge.
4. When the calibration process is complete, recharge the battery fully.

Upgrading Memory

This computer has one or more 256 MB or 512 MB memory module(s). Two memory module sockets are provided so that you can replace memory or install an additional memory module.

Removing the memory module



Before removing/replacing the memory module, turn the system off completely and remove the battery. Do not replace the memory module when the system is in Standby/Hibernate mode.

When using memory in dual channel, using memory of the same specification (the same capacity and manufacturer) is recommended.

1. Using a screwdriver, open the memory module compartment cover on the bottom of the computer.



2. Push the memory module tabs outward to pop the memory module upwards. Carefully pull the module out at an angle of about 30°.



Adding a memory module

1. Align the new memory module connectors accordingly and slide it into the slot at a 30° angle.



Ensure the notch on the memory module corresponds with the notch on the socket.



2. Push the memory module in until the module clicks into place. If the memory module is not fixed completely, gently push the memory down while pressing the memory module tabs outward.



3. Close and fix the memory module compartment cover using a screwdriver.

Using the Security Lock Port

The security lock is a device used to physically 'fix' the system when using it in a public place. The locking device needs to be purchased separately. The shape and methods of use may differ depending on the manufacturer. Please refer to the manual provided with the security lock for proper use.

1. Connect a security lock cable to a fixed object.
2. While holding the security lock port lever to the left, connect the cable to the security lock port.



Any damage to the machine caused by using a locking / security device is not covered under warranty.

Tips for Using Your Computer

The following information helps you avoid potential problems as you use your computer:



Do not try to disassemble your computer. Opening the system chassis voids your warranty. Only an authorised manufacturer service center can replace or add any parts inside the chassis.

- Follow all the instructions and cautions in your computer user documentation.
- The LCD has a polarized surface and can be damaged easily. To prevent damage, avoid touching the screen.
- Use only approved AC adapters, auto adapters, memory modules and other options.
- Because a notebook computer is small and has restricted air flow around components, it is more likely to overheat than a desktop computer. A fan inside your computer runs when needed to help eliminate heat. Make sure the fan vent on the left side of your computer is not blocked when you use the computer. Occasionally check the vents and remove any accumulated dust on the outside.
- Avoid using or storing the computer in extremely hot or cold areas, such as a car on a hot day. Keep the computer away from heaters and out of direct sunlight. Exposure to excessive heat may damage computer components. If you have left your computer in a hot place, let it cool down slowly to room temperature (with the LCD panel open) before using it.
- Do not remove the memory-module compartment door, or try to install a memory module when the computer is on.
- Set up your computer work area to avoid physical strain. Sit with your back straight and supported by your chair. Adjust your chair or work table so that your arms and wrists can remain in a relaxed position, parallel with the floor. Avoid bending or twisting your wrists as you work. Your hands should “float” slightly above the keyboard. Refer to a book on office ergonomics for more information on setting up your work area.
- Take frequent breaks from working at the computer to rest your eyes and stretch your muscles.
- Remember to save your data files frequently and to make backup copies of your files.

- A walkie-talkie must be kept more than 1 meter away from the device. Since a walkie-talkie transmits a very strong signal, it may cause a computer malfunction.

Travelling with Your Computer

Air Travel

If you are travelling by air, follow these tips:

- Take the computer with you as carry-on luggage. Do not check the computer with your baggage.
- Allow the computer and disks to go through the X-ray security devices. Do not hand-carry disks through the walk-through metal detectors, which can cause loss of data.
- Be prepared to turn off the computer during take off and landing.



Please follow the instruction of the corresponding facilities regarding the use of wireless devices (wireless LAN, Bluetooth , etc.) when in a wireless communication restricted area (e.g. airplane, hospital , etc.).

Handling Spills

Do not spill anything on your computer. The best way to avoid spills is to avoid eating and drinking around your computer. If you do spill something on your computer, turn off your computer, unplug it immediately, and do the following:

- If you spill liquid on the keyboard, drain as much of the liquid from the keyboard as possible. Be careful not to let the liquid drip onto the LCD panel. Allow the system to dry for several days before trying to use it.
- If you spill liquid on an external keyboard or keypad, unplug it and drain as much of the liquid as possible. Allow the keyboard to sit at room temperature for a full day before trying to use it.



Sweet liquids leave a sticky residue that may jam the keyboard despite your efforts to dry it.

- If you spill liquid on the LCD panel, clean it immediately with a soft cloth and denatured alcohol or a proprietary LCD screen cleaner. Do not use water, window cleaner, acetone, aromatic solvent, or dry, rough towels to clean it.



Some liquids damage the polarized LCD screen. If your screen is damaged, contact your authorized manufacturer's service center for a replacement.

Storing the Computer for Long Periods

If you will not be using the computer for a long period of time (a month or more), you should discharge the battery completely then remove the battery from the computer. This extends the life of the battery.

Troubleshooting

Complete the following in the order presented until your system is functioning properly. If all of the steps below fail then contact your local reseller for assistance.

▶ *Questions and Answers*

Please see “Questions and Answers” on page 120 for assistance in correcting any computer operational problems.

▶ *Check the Connections*

Verify all of the power and peripheral cables are securely plugged into their sockets and that your system and power supply is on.

▶ *Norton AntiVirus*

Run Norton AntiVirus to ensure a virus is not affecting your computer.

To run Norton AntiVirus proceed as follows:

Click **Start > All Programs > Norton AntiVirus > Norton AntiVirus 2005.**

▶ *Magic Doctor*

Magic Doctor is a program developed and distributed by Samsung Computer and is used to troubleshoot problems. Since this program enables you to diagnose your system with one-click, try to diagnosis your system with Magic Doctor.

Click **Start > All Programs > Samsung > Magic Doctor > Magic Doctor.** (p140)

▶ *Windows Help and Support*

Run Windows Help and Support to find problem that may be affecting your computer.

To run Windows Help and Support proceed as follows:

Click **Start > Help and Support.**

▶ *Frequently Asked Questions*

To view FAQ's on your computer, please visit www.samsungpc.com.

▶ *Reinstalling Software*

If for some reason your system crashes you may corrupt your HDD, Windows operating system and/or some of your device drivers. If this is the case, use **System Recovery CD** to reinstall OS and **System Software Media** to reinstall the corrupt device drivers.



System Recovery Precaution:

Before you start restoring your windows operating system insure you backup all data on your hard drive.

Samsung is NOT responsible for any data loss.

Questions and Answers

This section provides information on possible problems, solutions and other references for system use.

Windows Related

Q1 The system does not shutdown properly.

A When the system does not shutdown normally, press and hold the Power button until the system manually shuts off. If the Power-Saving Mode is configured into the Power button, press and hold for more than 4 seconds to shut the system off. When the system is turned on after such manual shutdown, Scandisk will run to check errors in the system.

Q2 The system freezes during program operation

A1 There is an error with the program currently being used. Press the <Ctrl>, <Alt>, and <Delete> keys simultaneously and click End Task in the [Windows Task Manager] window.

A2 There is an error with the Windows OS. Reboot the system by using the Power button.

Display Related

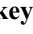

Q1 The LCD screen is too dark or too bright

A Adjust the LCD screen brightness. Use the <Fn>+<☞☞>, <Fn>+<☞☞> keys.

Q2 The screen saver disturbs screen viewing during Media Player or video file operation.

A Unselect Tools > Options > Player > Allow screen saver during playback in the Media Player.

Q3 In DOS mode, changing the full screen DOS mode by pressing <ALT>+<Enter> key displays a broken image for a short period.

- A** The DOS mode which supports 2 Byte characters such as Korean and Japanese runs in graphic not in text mode. In this case, a broken image may be displayed while changing the video mode settings.
- Q4 In the following cases, the screen blinks or displays noise for a short time: (Click on the Graphics Related tab, Change Resolution, Change Display Device, Remove the AC Adapter, Restart the System and then Change the PowerMizer level.)**
- A** This may happen while the video driver is examining the connected device. While detecting, any connected display devices may blink or some noise may occur.
- Q5 When I connect a projector, and change the setting to display screen image on both the LCD and the projector by pressing <Fn>+<F4 / **
- A** Press <Fn>+<F4 / If the same problem continues, it means the projector cannot support the resolution. Lower the resolution to 1024 x 768.
- Q6 The playback screen of a DVD title or an MPEG file is only displayed on the LCD.**
- A** Video is displayed on a single display device by default, when both LCD and CRT are selected simultaneously.
1. Right-click over the Desktop and select **Properties** from the pop-up menu.
 2. In the [Display Properties] window, select the **Settings** tab > **Advanced** > **CATALYST Control Center** tab.
 3. Click the **ATI CATALYST Control Center** button and run the **CATALYST Control Center**.
 4. From the **View** menu, select the **Advanced View** item.
 5. Select **Avivo Video** > **Theater Mode** and set the **Clone Mode Overlay Display** item to **Theater Mode (Full Screen)**. You can then view the video on both LCD and CRT.
- Q7 After connecting to a TV, some programs such as Debug, Mem, etc. do not run in full screen MS-DOS mode.**

A If a TV is used as the display device, some programs such as Debug, Mem, etc. may not run properly in full screen MS-DOS mode. Run the programs in the MS-DOS window.

Q8 The Taskbar on the bottom of the screen does not appear when a projector is used as the display device.

A It may happen that even though the Wide LCD supports the resolution, the projector does not support the resolution. In this case, change the system resolution to 1024 x 768 pixels (recommended).

Q9 When a TV is connected, the Turn off monitor power option is not performed.

A When connecting a TV after booting up your computer, the Turn off monitor power option may not be performed. For it to operate properly, it is recommended to connect a TV and then booting up the computer.

Q10 The shortcut icon does not appear on the screen.

A The shortcut icon appears only when Magic Keyboard and the Samsung Display Manager program are installed.

Q11 I cannot set up Dual View properly. (For Intel Graphics only.)

A This may happen when Clone mode is selected for an external monitor. Press the <Fn>+<F4> key combination to select LCD and try to set up Dual View again.

Q12 The screen is rotated, but I cannot return it to the original orientation. (This only applies to Intel graphics cards.)

A This may happen when you have used the screen pivot function or pressed a wrong key while using the computer. For Intel Graphics, press the Ctrl+Alt+Direction Key (↑ : rotate 0 degrees, → : rotate 270 degrees, ↓ : rotate 180 degrees, ← : rotate 90 degrees) to return to the original orientation.

Q13 While playing a video in the LCD/CRT status, and I change the display screen to Full Screen or move the display screen, black lines appear on the secondary display device.

A Set **Avivo Video > Theater Mode > Theater Mode Setting** to **Full Screen** in the **CCI Options**.

Q14 **If I run the Catalyst Control Center of the graphics driver, it appears on the screen after some time.**

A Since the Catalyst Control Center is developed based on the .Net Framework of Microsoft, some time is required to define the .Net Framework settings when launched for the first time.

Q15 **I have connected a TV with a cable that converts S-Video to Composite, but the picture is displayed abnormally on the screen.**

A This system supports connecting a TV with an S-Video or Component cable but does not support connecting a TV through a Composite interface with a cable that converts S-Video to Composite.


Q16 **If I change the graphics settings using the Display Settings Wizard of the graphics driver, the setting window goes back and hidden.**


A This is a problem due to the design of the graphics driver. If a user clicks on the Apply button after setting the graphics settings using the Settings Wizard, the final Finish screen goes back and is hidden.

Q17 **The picture is abnormally displayed on the screen when the computer is resumed in Standby mode. (This only applies to Intel graphics cards.)**

A This may happen when the CRT is set as the Primary device in the Extended Desktop Settings.

When the CRT is set as Primary and the LCD as Secondary, the picture may be displayed abnormally if the system enters Standby mode, is restarted after disconnecting the CRT and the resolution is changed. It is recommended setting the LCD as the Primary Display Device.

Q18 **<Fn>+<F4/ > Key combination does not work.**

A While displaying video of VCD or MPEG, or the display setting is Dual View, you cannot toggle display devices. Also the installation of NetWare Client 32 program disables the function of <Fn+F4/ >.

Sound Related

Q1 How to install and uninstall the sound driver

A To install or uninstall the sound driver from this system, please follow the procedures below.

- **Sound Driver Components**

The sound driver consists of the following 3 components and the 3 components are automatically installed during the installation.

- **High Definition Audio - KB888111:** Microsoft UAA Bus Driver for High Definition Audio
- **SoundMAX:** SoundMAX Integrated Digital HD Audio
- **WOW XT and TSXT Filter Driver:** SRS

- **Uninstalling the Sound Driver**

To remove the sound driver due to a problem or for an update, follow the procedures below.

If you do not follow the sequence below, the sound driver may not be removed or the reinstalled driver, or may not work properly.

1. Select **Start > Control Panel > Add or Remove Programs**.
2. Remove **WOW XT and TSXT Filter Driver** first.
3. Remove **SoundMAX** and restart the computer.



Do not remove the **High Definition Audio** item. Removing this item also removes the modem device driver.

If you have removed this item, you need to install the modem device driver again.

- **Reinstalling the Sound Driver**

If there is an already installed sound driver, uninstall the driver according to the procedures above.

The sound driver is included on the System Software Media.

1. Insert the System Software CD-ROM into the CD-ROM drive.
2. Select the Sound Driver on either Standard Installation or Custom Installation, then the 3 components of the sound driver are automatically installed.

- **Installing the Sound Driver after a Windows XP Reinstallation**

If you install the sound driver after reinstalling Windows XP, the Add Hardware Wizard (Modem Device) window may appear during the sound driver installation. This happens because the **High Definition Audio - KB888111** Hotfix, which has been installed on your system, has changed the settings to search for both sound and modem devices. If you install the modem device, this message will not appear. If necessary, install the modem device together.



The number of the High Definition Audio - KB888111 Hotfix may differ if you have updated the Hotfix from the Microsoft web site.

Q2 Recording with the built-in microphone

A Since the default setting is set to recording with an external microphone, change the settings to record using the built-in microphone.

1. Double-click the **Volume** icon in the Taskbar (Add icon of 2 on page 46) and click **Options > Properties**.
2. Click on Options > Properties.
3. Select **SoundMAX HD Audio O** in the Mixer Device field and select '**MIC**' in the **Show the following volume control** field.
4. When clicking the **OK** button, the **MIC** field appears in the Master Volume.
5. Select **Options > Advanced Controls**.
6. Unselect **Advanced > Microphone Jack** in the **MIC** field of the Master Volume window and click on **Close**.

You can now record using the built-in microphone.

Q3 Using the additional functions when recording with the built-in microphone

A To record sound at the center of both microphones, set it up as follows.

1. Click on **Start > Control Panel > Sound, Audio and Audio Devices > SoundMAX**.
2. In the **Microphone Peripherals** field, select '**Directional Beam**' and click the **OK** button.

Modem Related

Q1 I cannot hear the modem sound.

A1 Check that the telephone line is properly connected to the modem.

A2 Check that the modem driver is installed properly.

1. Click Start > Control Panel > Performance and Maintenance > System.
2. Select Hardware tab > Device Manager > Modems in the System Properties window, and check if there is a yellow exclamation mark on the installed modem icon. If there is, delete the modem device driver and reinstall the driver, because the yellow exclamation mark represents a not properly installed driver.
3. If there is no yellow exclamation mark, double-click the installed modem, and click Diagnostics tab > Query Modem in the Modem Properties window to diagnose the modem.

No message in either of Command and Response in the Diagnostics tab means that the modem is not operating properly.

Diagnose the modem again after restarting the system or reinstalling the driver. (You have to exit all programs using modem in the advance of diagnostics of the modem).

Q2 I cannot make a call using an extension line.

A In general, the dial tone of a PBX or a digital phone switching system is not a continuous one, unlike that of a trunk line.

Therefore, the modem may not make a call because the modem mistakes the dial tone from a PBX or a digital phone switching system as a busy tone.

In this case, complete the following procedures.

- Using an AT command

As an initialization command, use the command, ATX3.

Otherwise, enter the ATX3 command manually before making a call.

It can correct this problem by skipping the dial tone check step.

- Configuring the Modem through the Control Panel

1. Click Start > Control Panel > Network and Internet Connections.
2. Under See Also, click Phone and Modem Options.
3. In the Modems tab, select the installed modem, and click Properties.
4. In the Modem tab of the Modem Properties window, clear the 'Wait for dial tone before dialing' check box.

5. When the configuration is completed, click OK.

Q3 How do I use my modem when dialing from overseas?

A1 Check that the modem is correctly configured according to the current country. Because the values for communication may differ according to the country, you may not be able to connect via the modem due to an incorrect modem configuration.

1. Click Start > Control Panel > Network and Internet Connections.
2. Under See Also, click Phone and Modem Options.
3. In the Dialing Rules tab, click Edit.
4. In the General tab in the Edit Location window, select the current country from the Country/region radio box, specify the Area code, and click OK.

A2 Because the shape of the telephone plug may differ according to the country, you have to purchase and use the appropriate telephone plug for that particular country.

Q4 How do I receive a fax while the system is in power saving mode (Rest mode) ?

A To receive a fax in Standby Mode, you have to set it up as follows.

1. The automatic fax reception function of the fax program needs to be activated. (For more information, refer to the corresponding fax program manual.)
2. Click Start > Control Panel > Network and Internet Connections.
3. Under See Also, click Phone and Modem Options.
4. In the Modems tab, select the installed modem, and click Properties.
5. In the Power Management tab of the Modem Properties window, select the “With this device, exit the computer from stand-by mode” item and then click OK.

The above setting enables the modem to turn on the system and receive a fax when in power saving mode.

Wired LAN Related

Q1 <Wake On LAN> function

A <Wake On LAN> is a function that activates the system in rest mode when a signal (such as ping or magic packet commands) arrives from network (wired LAN).

To use <Wake On LAN> function:

1. Select My Network Places > View network connections from the Desktop.
2. Click the right button on the touchpad over Local Area Connection, and select Properties.
3. Click Configure, and select Power Management tab. Select 'Allow this device to bring the computer out of standby', then click OK. Restart the system.

- If the system in rest mode is activated when there is no received signal, use the system after disabling <Wake On LAN> function.

- Connecting wired LAN while using wireless LAN may not execute <Wake On LAN> function. Configure wireless LAN to 'Disable' to use <Wake On LAN> function.

1. Click on **My Network Place> View network connections** on the Desktop.
2. Right-click over **Wireless Network Connection** and select **Disable**.

Q2 When I connected 100Mbps wired LAN and the computer exits standby/ hibernate mode, a message informing 10Mbps wired LAN connection appears.

A When the computer exits standby/hibernate mode, restoring the network takes about 3 seconds. When the network is restored, it operates in 100Mbps.

Q3 To network-boot quickly when both the X-Dock and the Wireline LAN port of the system are both connected to the LAN with the LAN cables,

A If LAN cables are connected to both ports, because the LAN cable connection status of X-Dock is checked and the status of the system is checked in sequence, approximately 2 minutes are required.

To boot quickly, press the <F12> key, press the <Esc> key and select either 'Network Boot from Internal LAN' or 'Network Boot from Dock LAN'.

Wireless LAN Related

Q1 The Wireless LAN device is operating properly, but I cannot connect to the Internet or to another computer.

This is due to an incorrect configuration, or a configuration error. Check the following check lists:

- A1** If you are using a computer-to-computer (Ad Hoc) network connection, check that the name of the configured network (SSID) is correct. The network name (SSID) is case sensitive.
- A2** If you are using a network key (encryption key), you have to use the same network keys for an AP (Access Point) or a computer-to-computer network (Ad Hoc). The network key of the AP is configured in the AP management program. Ask your network administrator or AP manager for more detailed information.
- A3** Check that the device driver is properly installed. If the driver is not properly installed, you will find a yellow exclamation mark on the network icon by clicking Start > Control Panel > Performance and Maintenance > System > Hardware tab > Device Manager > Network adapters > Wireless LAN adapter. If there is a yellow exclamation mark, please reinstall the device driver with the system software Media.
- A4** Referring to A2 of Q3, Check that the network bridge configuration is correct.

Q2 The signal strength is excellent, but I cannot connect to the network.

Even if the signal strength is excellent, the network connection may not operate properly if the TCP/IP properties are not properly configured, or the network key (encryption key) is incorrect.

- A1** Check that the TCP/IP properties are configured properly. When you connect to an AP, click the Wireless Network Connection icon on the taskbar and select the Support tab. If the IP is not allocated properly, the IP address will be displayed as follows (e.g. 169.254.xxx.xxx).
If the network does not provide DHCP, you have to specify the correct IP address by asking your network administrator.
Even if the network provides DHCP, the server may not allocate an IP address to the client properly, and the client station cannot connect to the network.
- A2** Referring to A2 of Q1, check that the network key is correct.
- A3** Referring to Q4, check that AP is operating properly.

Q3 I cannot share an Internet connection.

- A1** It may require some time to synchronize the computers to share an Internet connection after the Internet connection sharing configuration is completed. If you cannot share Internet connection even after a longer period, restart the computer.
- A2** Check if the connection between the network adapters is configured to bridge. If there is a configured bridge connection between the network adapters through the network configuration wizard, remove the network bridge, and reconfigure the Internet connection sharing.
A bridge connection is created when you ran Network Setup Wizard from the [Network Connections] window, and selected both the internal connection adapter and another adapter in the wizard.

Q4 I cannot connect to the AP.

Check the Computer Settings

- A1** Verify whether the wireless LAN function of the computer is on by doing the following. If the wireless LAN function is off, turn it on.
- For Windows XP, verify that the wireless network connection has been set to "Enable" in Start > Control Panel > Network Connections.
 - Check if the wireless LAN is turned on.
- A2** Verify whether the same network key (encryption key) has been entered in both the AP and the computer.
The network key is an encryption key for encrypting data transmitted between the AP and the computer. It is recommended setting the network key manually.

Check the AP Settings

For the AP settings, refer to the User's Guide provided by the AP manufacturer.

- A3** Verify whether the environment is suitable for using a wireless LAN.
The use of a wireless LAN may be restricted according to the environment and distance. Obstacles such as walls or doors affect the use of a wireless LAN. Install the AP in a high and open space 50cm from the wall and far removed from any other radio signal sources.
- A4** Verify whether the AP is operating properly.
- When the AP is not operating normally, turn off the AP and after a short while turn it on again.
 - Verify whether the AP's firmware is the most recent version. (Contact the AP manufacturer or the place where you purchased the AP for details of the AP firmware.)
- A5** Verify whether the AP has been properly connected to the network.

Verify whether the network is operating normally by connecting the wired network cable, which has been connected to the AP, to your computer.

A6 Check the network key settings (encryption key).

When automatic code conversion (a passphrase function) has been selected and data communication is not functioning even with a normal wireless connection, it is recommended entering the network key (encryption key) manually.

A7 Check the AP settings as follows. (The following is recommended for a standard environment and thus may differ according to the specific wireless network environment.)

- When several APs are present simultaneously, check the channel setting for each AP. When different APs are using nearby channels, interference may occur between electronic waves. Set the APs' channels further apart from each other. (Ex: Ch1, Ch5, Ch9, Ch13)

- When an AP's SSID (Service Set ID) option is set to "Hide", you cannot search for that AP on the computer. We recommend canceling the "Hide" option for an AP. The SSID is a name for distinguishing one wireless LAN from another wireless LAN.

- It is recommended using Long Preamble. Preamble is a signal for data transmission synchronization. Short Preamble may be supported by some types of APs but may cause compatibility problems.

- It is recommended using a static IP.

- Since static channel selection is more reliable than auto channel selection, it is recommended setting a static channel.

Q5 In the Windows XP 'Available wireless networks' window, the Wireless Network Connection is displayed as 'Not Available'.

A1 Check if the wireless LAN is turned on.

A2 Check if there is additional program for a wireless LAN connection installed. Windows XP supports wireless LAN connections through the Wireless Zero Configuration (WZC) service. Therefore, an additional program for wireless LAN connection is not required, unless the network requires a specific program. However, installation of some wireless LAN related programs may sometimes disable the [View Available Wireless Networks] window supported by WZC service. Exit the wireless LAN related program then check whether the window is enabled.

A3 Initialize the device driver.

Click Start > Control Panel > Performance and Maintenance > System >

Hardware tab > Device Manager > Network adapters, and select the wireless LAN adapter. Right-click the network adaptor and select 'Disable'. Then right-click over the network adaptor and select 'Enable' after a short wait to check that the device is operating properly.

- A4** Right-click the My computer icon, and select Manage. When the Computer Management window appears, double-click Services and Applications on the left, and then click Services from the sub menu tree. Select the Standard tab in the right pane, double-click Wireless Zero Configuration and check that Startup Type is configured to Automatic, and the Service status is Started.
- A5** In the case of Windows XP, click Advanced in the [Wireless Network Connection] dialog box (see "Connecting to an Access Point (AP)" (p66)) and make sure that 'Use Windows to configure my wireless network settings' is selected.

This may happen when a third-party wireless network setup program (e.g. PROSet) other than Windows XP default program is installed. For setting up a wireless network using the Windows XP program, this option should be selected.

Q6 When connecting to a computer-to-computer (Ad Hoc) network, I cannot connect to another computer connected to the same computer-to-computer network.

- A1** Make sure that the security settings and network name of the computer-to-computer (Ad Hoc) network is correct.
- A2** Check the TCP/IP properties of the computers to be connected through the computer-to-computer (Ad Hoc) network. All of the computers to be connected through a computer-to-computer (Ad Hoc) network should be configured so that their IP addresses are within the same subnet range.
- If the TCP/IP Settings are configured to DHCP, the address is automatically configured to an address within the subnet IP range. This will take about 2~3 minutes.
 - If the IP address is configured to static IP in TCP/IP properties, select Use the following IP address in the TCP/IP properties of the wireless adapter, configure IP address: 10.0.0.1~10.0.0.254, and Subnet mask: 255.255.0.0, and then try again.
 - A fixed IP is recommended for a small-size network.

Q7 When using a computer-to-computer (Ad Hoc) network, sometimes I cannot search the access point.

- A** It may happen occasionally when you are using a computer-to-computer (Ad

Hoc) network connection. Even if you cannot find some access points, the computer-to-computer (Ad Hoc) network is operating properly. Click Refresh to view the latest search result.

Q8 Running Help file while running Profile Wizard in the wireless LAN program (PROSet) makes the PROSet window white.

A It will be displayed properly when you finish the profile wizard. It does not affect the program operation.

Q9 The network does not operate properly when both the wireless and the wired network connections are simultaneously configured with the same IP address.

A You cannot use the wireless and the wired network connections using the same IP address simultaneously. To use either the wireless or the wired network in turn with the same IP address, you have to Disable whichever network device will not be using in the network connection of the Control Panel.

Q10 The wireless LAN does not work properly when there is a device operating on an adjacent frequency in the vicinity of the product.

A1 Channel interference may occur when a wireless video transceiver or a microwave oven is being used. If you experience channel interference from other equipment, it is recommended changing the channel to connect to the AP. For more information about AP settings, refer to the User Manual supplied by the AP manufacturer.

A2 Since IEEE802.11g equipment operates in hybrid mode when there is active IEEE802.11b equipment, the data rate may be degraded.

Q11 An established wireless LAN connection is disconnected after 2~3 minutes, and the connection is not recovered.

A1 This may be caused by channel interference. Change the channel of the AP, and reconnect.

A2 This may be caused by selecting the 'Use IEEE 802.1x network authentication' option when IEEE 802.1x authentication is not available.

Check the properties of the AP in the wireless network settings. If the 'Use IEEE 802.1x authentication in this network' option is selected, deselect the option on the Authentication tab.

For more detailed information about authentication server, ask your network administrator.

A3 If the AP is configured to 'Use network authentication (Shared Key)'

If the AP is configured to authentication shared mode, all computers to be connected should be configured as follows:

- If you are using Windows XP, select network authentication(shared mode) in the wireless network settings.

Select Start > Control Panel > Network and Internet Connections > Network Connections, right-click the Wireless Network Connection icon and then select View Available Wireless Networks.

Select Change Advanced Settings from the left menu, select an AP from Preferred networks window in the Wireless Networks tab, and click the Properties button. Select Shared Mode in the Network Authentication field of the Association tab, and then click the OK button.

If the Preferred networks window in the Wireless Network tab is empty, click View Wireless Networks, select an AP to connect to, and select Shared Mode in the Network Authentication field of the Connection Information tab as described above.

For more detailed network authentication procedures, ask your AP (Access Point) administrator.

Q12 After PROSet is installed, The "AEGIS Protocol (IEEE 802.1x) v2.2.1.0" appears in the [Local Area Connection Properties] window.

A The AEGIS Protocol is a security authentication protocol that is automatically installed when PROSet is installed and does not affect the operation of other programs.

Q13 Although I have turned the wireless LAN off using the Off Button on the PROSet, the wireless LAN operating light is still on.

A This is normal. The Off Button for the Wireless LAN on the PROSet only turns off the S/W and not the H/W for the Wireless LAN.

Q14 After installing the PROSet, I cannot manage the wireless network under Windows.

A Click on "Use Microsoft Client" in the Tools menu of the PROSet program to manage a wireless network in Windows.

To manage a wireless network in the PROSet program, click on "Use Inter PROSet/Wireless" in the Tools menu of the PROSet program.

Games and Programs Related

Q1 3D game is not executed, or some functions are not working.

A Change the graphic setting of the game to '2D' or 'Software Renderer', then execute the program again.

Q2 I launched a game right after installing it, and the game is not executed.

A This problem may occur when the game is not compatible with Windows XP. Launch the game again, and it will be executed properly.

Q3 While playing a game, pressing the <Fn>+<F4 / [Icon]> keys does not work or the screen is not properly displayed.

A Some games and 3D application programs may change the display device control. Therefore, pressing the <Fn>+<F4 / [Icon]> keys may terminate the running program or may display an abnormal screen.

Press the <Fn>+<F4 / [Icon]> keys before launching a program and do not press them while running the program.

Q4 Running speed of a game is too slow or fast.

A Change the setting of Power Schemes to 'Always On'.
(Click Start > Control Panel > Performance and Maintenance > Power Options > Power Schemes tab, then configure the Power schemes field to 'Always On'.)

Q5 Some part of a game image is not displayed or is displayed in black.

A This may happen when running a game designed for DirectX 8.1, such as NHL 2003, MVP Baseball 2003, etc.

Q6 The game screen is displayed small.

A [ATI Graphics]

This may happen when the display settings are set to zoom out mode ('Use center output'). Change the settings as follows to fit the game screen to the LCD screen.

1. Right-click over the Desktop and select Properties from the pop-up menu.
2. In the [Display Properties] window, select the Settings tab > Advanced > CATALYST Control Center tab.

3. Click the ATI CATALYST Control Center button to run the CATALYST Control Center.
4. From the View menu, select the Advanced View item.
5. Select Notebook Panel Properties > Properties and set the Panel Settings to 'Image Zoom In - Fit to Panel Size' and click the Apply button.

[Intel Graphics]

1. Right-click on the Desktop and select **Properties** from the pop-up menu.
2. In the [Display Properties] window, select the **Settings** tab > **Advanced** > **Intel Graphics Media Accelerator Driver for Mobile** tab.
3. Select the **Graphic Properties** item, select '**Single Display**' and set the Current Display to '**Notebook**'.
4. Click the **Display Settings** menu, select '**Full Screen**' for the Display Extension and then click the **Apply** button.

Q7 The game play screen frequently stops and starts.

A [Intel Graphics]

This may occur when '**Intel Dual Frequency Graphics Technology**' is selected.

1. Right-click on the Desktop and select **Properties** from the pop-up menu.
2. In the [Display Properties] window, select the **Setting** tab > **Advanced** > **Intel Graphics Media Accelerator Driver for Mobile** tab.
3. Select the **Graphic Properties** item, select '**Single Display**' and set the Current Display to '**Notebook**'.
4. Click the **Display Settings** menu and the '**Power Settings**'.
5. Unselect '**Intel Dual Frequency Graphics Technology**' and then click the **Apply** button.

Q8 Game play is not displayed smoothly on the screen.

- A** For 3D games, the texture data for the 3D screen display is saved to the system memory. If there is insufficient system memory, the data is saved to the hard disk drive and loaded to memory when required. This operation may temporarily stop displaying the picture on the screen.

In this case, lower the game resolution or the screen settings. (For Delta Force: Black Hawk Down, Medal of Honor, Battle Field, 1942, etc.)

Q9 If I run a game, a message appears informing me that the game is not supported.

A Since Intel Graphics do not support the H/W T&L function, a game using the H/W T&L function may play abnormally.

Example) SWAT4, Splinter Cell, Armies of Exigo, Brothers In Arms, Medal of Honor Pacific Assault, The Lord of the Rings, Alexander, Enter the Matrix, etc.

Security Center

Q1 To change the popup window display settings when connected to the Internet.

In the Windows XP SP2 environment, you can decide whether to display a popup window when connected to the Internet, for user convenience and security.

A1 To display most of the popup windows when connected to the Internet:

1. Click on Internet Options in Start > Control Panel > Security Center > Manage security settings for.
2. In the Privacy tab of Internet Properties, clear Block pop-ups.

A2 To display popup windows only from the current site when connected to the Internet:

Place the cursor on the notification area at the bottom of the Internet address bar and right-click to display a menu, from which you can select Temporarily Allow Pop-ups or Always Allow Pop-ups from This Site.

A3 To display popup windows from a particular site:

1. Click on Internet Options in Start > Control Panel > Security Center > Manage security settings for.
2. In the Privacy tab of Internet Properties, click on Settings from Block pop-ups.
3. Enter a URL to want to allow pop-ups into Address of Web site to allow and click on Add.
4. You will find that the entered address is added to the allowed sites list. The next time you connect to the Web site, you will see pop-ups appearing.

When you need to re-block a permitted site, select the Web site address that you want to block from the Allowed Sites and click on Remove.

Q2 When you connect to a Web site, you see the message, “To help protect your security, Internet Explorer stopped this site from installing an ActiveX

control on your computer” or “This site might require the following ActiveX control” below the address bar.

- A** Windows XP SP2 blocks unsigned ActiveX controls from being installed when connected to certain Web sites for security reasons. On some Web sites that have no ActiveX controls installed, applications are not started or do not display properly.

In this case, to install ActiveX controls, right-click the notification area to display a menu from which you can select Install ActiveX control.

Q3 When you see a Windows Security Alert icon () appear on the right part of the task bar.

With the Security Center feature added, Windows XP SP2 checks the Firewall, the automatic updates configuration and installation of virus-checking programs to display a Windows Security Alert icon on the right part of the task bar when it judges that the computer is vulnerable to attacks from the Internet. In this case, check the following to install the necessary components.

A1 Set up the Windows Firewall.

When you set up the Windows Firewall, you will be protected from unauthorized access through the Internet or the network.

1. Click on Windows Firewall in Start > Control Panel > Security Center > Manage security settings for.
2. From the General tab of Windows Firewall, select ON (recommended).
3. If you want to allow a certain program or service to gain access to your computer using the Firewall, select and check the program or service that you want to allow access from, in the Exceptions tab of the Windows Firewall. If you want to add a program to Programs and Services, click on Add Program and select it.

A2 Set up Windows Automatic Updates.

This automatically downloads and installs critical updates via the Internet to keep your computer up to date.

1. Click on Automatic Updates in Start > Control Panel > Security Center > Manage security settings for.
2. From general tab of Automatic Updates window, select Automatic (recommended).

- A3 Keep your computer current with the latest virus updates. (ex: Norton Antivirus)** Even when you have installed Norton AntiVirus on your computer, Windows cannot recognize the program until you configure the settings, displaying a Security Alert icon.

When you first use or install Norton AntiVirus for the first time, follow the Registration Wizard steps to configure the registration settings.

To protect your computer from virus attacks with the latest updates, click on Options to display the Norton AntiVirus Options window. From the left menu of the window, check Run Automatic Protection to select Automatic Protection and check Run LiveUpdate to select LiveUpdate.

- A4** Two virus scanning programs on one computer may cause system conflicts. Remove one of the programs from the system.
- A5** If Windows does not recognize the existence of an anti-virus program even when it has been installed, your computer could be vulnerable to attacks from the Internet. You should install an anti-virus program that your computer is able to identify.

Check the following programs which Windows can detect and select one from the list.

A list of anti-virus programs that Windows can detect:

- Symantec Norton Anti-Virus
- NetworkAssociates (McAfee)
- TrendMicro
- ComputerAssociates
- Panda
- Kaspersky
- AhnLabs (AhnLab)



Visit the Microsoft Web site (www.microsoft.com) regularly to check the latest list.

Other

Q1 4GB memory capacity is not properly recognized by Windows.

- A** Windows XP SP2 and Windows Sever 2003 SP1 Standard Server cannot display memory exceeding 4GB due to license and driver compatibility problem. Even if the memory capacity is displayed as 3GB in your system information, 4GB memory is recognized normally by the system.

Using Magic Doctor

Magic Doctor is troubleshooting software provided by Samsung Computer. A user can diagnose system problems via one-click or by selecting diagnostic items.

1. Click **Start > All Programs > Samsung > Magic Doctor > Magic Doctor**.
2. Click on an icon at the top of the screen.



- **OneClick Diagnosis:** You can diagnose problems affecting the system connections and system operations via one-click.
 - **User Diagnosis:** You can select the necessary diagnostic items and diagnose system problems.
 - **System Recovery:** Launches the Restoring the System function of Windows XP. (p141)
3. When the system diagnosis is completed, the diagnostic result appears.
If problems are found, click the **Cure** button to correct the problem. Magic Doctor starts the correction operations.

Restoring the System



This description is only for models running Window XP.

The System Restore function allows you to restore your computer to an earlier copy (called restore point), and restores the settings if a problem occurs. The System Restore function is provided by Windows XP to enable the resolution of various problems without reinstalling Windows XP completely.

You can use System Restore in the following cases.

- The system files are deleted or damaged by mistake.
- The system is unstable or a problem occurs in a device driver.
- A problem occurs after changing system files such as the registry.
- A problem occurs after installing a new program.

Creating a Restore Point

Restore points are created at predetermined times and at times of significant system events such as when a program or a driver is installed. You can also decide when to create your own restore points.



There has to more than 200MB of free space on the hard disk drive. If the disk space is insufficient, a saved restore point might be deleted.

You are recommended to create a restore point when you have purchased a new computer and before installing new programs or device drivers. Before creating a restore point, check that the computer is operating properly.

The procedures to create your own restore point are described below.

1. Click **Start > All Programs > Accessories > System Tools > System Restore**.

2. Select "Create a restore point", and click **Next**.



Since changes made after the Recovery Point may not be maintained, please back-up all necessary files to another location before performing system recovery.

3. In the Restore point description box, type a name to identify the restore point, and then click **Create**. A restore point has been created.

Returning your computer to an earlier restore point

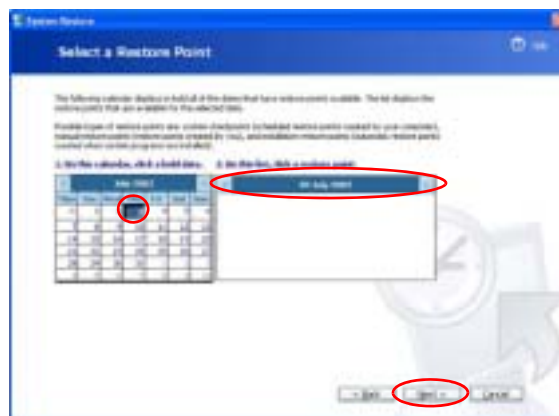
The procedures to return your computer to an earlier restore point when a problem has occurred are described below.

1. Click **Start > All Programs > Accessories > System Tools > System Restore**.

2. Select "Restore my computer to an earlier time", and then click **Next**.



3. Select the desired restore date from the calendar restoration and select the desired restore point from the list, and then click **Next**.



The date of the restore point is displayed in bold font.

4. Confirm the selected restore point and click **Next**. System Restore shuts down Windows, and starts the restoration processes.
5. After the restoration is complete, Windows restarts. In the [System Restore completed] dialog, click **OK**. Your computer has been restored to the selected restore point.

Undoing the last restoration

The procedures to undo a restoration are described below.

1. Click **Start > All Programs > Accessories > System Tools > System Restore**.
2. Select "Undo my last restoration", and then click **Next**.
3. Confirm the restoration information to undo, and then click **Next**. System Restore shuts down Windows and starts undoing the restoration.
4. After the undo restoration is complete, Windows restarts. In the [Undo the last restoration completed] dialog, click **OK**. Your computer has been restored to the point prior to the last restoration.

Reinstalling Software

If you have reinstalled the Windows operating system, or the system and program do not operate properly, you can re-install the driver and program using the system software Media.



This computer is optimized for Microsoft Windows XP, therefore drivers for other operating systems are not included on the System Software Media.

Running the system software Media

Insert the system software Media into the CD-ROM drive. The initial screen appears automatically.



- **Standard Installation:** This displays a list of drivers or programs that are not currently installed on your computer from the system software Media provided. All necessary components are installed using the factory defaults.
- **Minimum Installation:** This displays the components (driver, Windows programs, etc) that, if not installed, may cause problems with the system performance. You can install only required components.
- **Custom Installation:** You can customize the installation of drivers and programs.

Installing drivers and programs

1. Click **Standard Installation** in the main window of the System Software Media. (Standard Installation is recommended)
2. The system is scanned to display the drivers and programs that need to be installed.
3. Click **OK**. The drivers and programs are automatically installed as factory defaults.



4. When done, restart the system.

Reinstalling Windows XP

If the Windows XP does not operate properly due to an error in the system, or if you have replaced the hard disk drive, you can reinstall Windows XP using the system recovery CD.



With the system recovery CD, you can reinstall Windows XP only. To return the system to the state of shipment, reinstall the device drivers and programs with the system software Media after reinstalling Windows XP with the system recovery CD.

Reinstalling Windows may delete the data on the hard disk drive such as files, programs, etc. In order to minimize damage from data loss, please remember to always back up data. Samsung Electronics is not liable in the case of data loss, please consult your warranty statement for clarification.



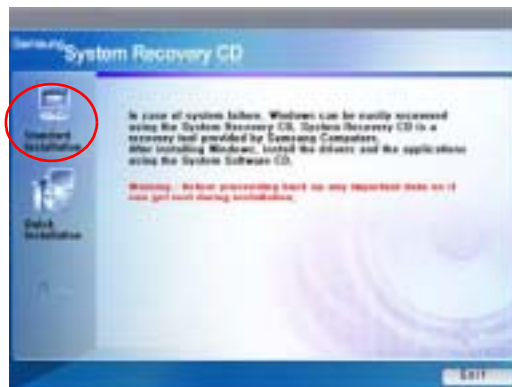
When you have set a booting password

You are asked to enter your booting password after restarting the system during the Windows installation. Enter the password to continue to the next steps.

Reinstalling Windows

Explain Standard installation option as a standard.

1. Insert the system recovery CD into the CD-ROM drive.
2. In the initial screen, click **Standard Installation**.



- **Standard installation:** You can change the settings for partitioning, the installation folder, etc. during the Windows installation. However, reinstalling Windows may delete the data on the hard disk drive such as files, programs, etc. In order to minimize damage from data loss, please remember to always back up data.
 - **Quick Installation:** This re-installs Windows with the user data and the system configuration intact. The user data in the already existing Windows folders may be preserved as the existing Windows folders are overwritten.
3. The description for the standard installation appears. Click **Yes**.
The installation starts, and the system will be restarted after a while.



When Quick Installation is selected, Setup proceeds with Step 3 before automatically installing Windows. Quick Installation overwrites the existing Windows version, so that drivers or applications do not need to be reinstalled.

4. After the system has restarted, the message 'Press any key to boot from CD' appears. Do not press any key at this time. After a while the partition configuration screen appears.
To not change the partition, press **<Enter>**.



What is partition configuration?

Partition configuration is a function that divides the hard disk drive into one or several partitions. Note that changing the partition deletes all of the data on the hard disk drive.

5. Select the folder to install the Windows operating system.
To delete the previous version of Windows and install in the current folder, press **<L>** on the keyboard.



If you press ESC to select another folder for the installation, new Windows folders are created causing a risk of dual booting.

6. After the installation process copies the necessary folders for the Windows installation, restart the system, and the message "Press any key to boot from CD" is displayed. You do not need to enter anything. In a moment, the Windows XP installation screen will appear to proceed with the installation.

7. When the **Regional and Language Options** window appears, click **Next**.
8. When a window that requires your name and organization pops up, enter your name and the organization and click **Next**.
In the Windows XP Professional edition, an additional window that requires the computer name and the administrator password appears.
Enter **the computer name and the administrator password** and click **Next**.
9. When the **Date and Time Settings** window appears, click **Next**.
Setup will continue.
10. When the system restarts to display **Press any key to boot from CD**, do not press any key.

When you see the Windows desktop, this means that the installation process is completed. Remove the system recovery CD and install **the device drivers and applications** from **the system software Media**.

If You Cannot Run Windows

If you cannot run Windows, you have to boot the system with the system recovery CD, and reinstall Windows. If you boot the system from the system recovery CD, you can install Windows only with the user installation option. You cannot install with the standard installation option.

1. Insert the system recovery CD into the CD-ROM drive and start the computer.
2. If the following message appears on the screen, press any key from the keyboard.

Press any key to boot from CD.....



This message appears only when the CD drive has booting priority. If the message does not appear, configure the CD drive as the first booting device referring to "Changing Booting Priority" on page 96.

3. Do not press any key at this time. After a while the partition configuration screen appears.
To not change the partition, press **<Enter>**.
4. Select the desired file system (format).
To maintain the current file system, press **<Enter>**.
5. Select the folder to install the Windows operating system.
To delete the previous version of Windows and install in the current folder, press **<L>** on the keyboard.
6. After the installation process copies the necessary folders for the Windows installation, restart the system, and the message "Press any key to boot from CD" is displayed. You do not need to enter anything. In a moment, the Windows XP installation screen will appear to proceed with the installation.
7. Follow the instructions of the Windows XP installation wizard to continue with the installation.
8. When the installation is complete, the computer will restart.
When the system has restarted, the Press any key to boot from CD message appears. Ignore the message.

The system boots and the Windows and Windows Registration screen appears. Register Windows, following the instructions to finish the Windows installation. Remove the System Recovery CD and install the **device drivers** and **application programs** using **Standard Installation** from the **System Software Media**.

Specifications

System Specification (X60)

The system specifications will be described below. The system specifications may differ depending on the derived models.

Item	Specification	Remarks
CPU	Intel Core™ processor Duo Intel Core™ processor Solo	Optional
Cache memory	2MB	
Main memory	256MB / 512MB, Max 4GB Memory type : DDR2 SODIMM	Optional
Main Chipset	Intel 945PM / 945GM , ICH7-M/ICH7-M DH	Optional
Hard disk drive (HDD)	9.5mmH 2.5" HDD 40GB/60GB/80GB/100GB/120GB	Optional
CD drive	RW-Combo, DVD Super Multi	Optional
Graphics	ATI Mobility Radeon X1300/X1400/X1600 (64MB/128MB/256MB) Intel 945GM Graphics (DVMT 64M/128M)	Optional
Sound	High Definition Audio Codec AD1986A	
Network Interface	Modem: V.92 Wired LAN: Intel i82573E 1G + AMT Intel i82573L 1G Wireless LAN: 802.11ABG Bluetooth 2.0+EDR	Optional Optional Optional
Multi Card Slot	Memory Stick, Memory Stick Pro, SD Card, MMC, xD card Supported	
PCMCIA Card Slot	PCMCIA Type I and II Compatible	
Ports	IEEE 1394 (4 Pin), USB2.0 x 3, Microphone, Headphone (S/PDIF supported), Modem (RJ-11), LAN (RJ-45), Monitor and TV Out (S-Video), DC Jack, Security Lock Port, 120 Pin Dock Port	Optional
Buttons	AVS Button, Volume Control Button	
Optional	Remote Control, Remote Control Sensor, TPM, Dock	
Dimensions (mm)	361 x 265 x 23.9 mm	W x D x H
LCD	15.4" WXGA(1280 x 800), 15.4" WSXGA+(1680 x 1050)	Optional
Weight	2.48Kg	
Battery	Lithium-Ion smart battery: 6 Cells	
Operation Environment	Temperature (storage) : -5 ~ 40°C (operation) : 10 ~ 32° C Humidity (storage) : 5% ~ 90% (operation) : 20% ~ 80%	
Operation Voltage	100 - 240 VAC	
Frequency	50 - 60 Hz	
Output Power	90W	
Output Voltage	19.0VDC	

The system specifications are subject to change without notice. For detailed system specifications, refer to the product catalog.
The capacity of the hard disk drive with Samsung Recovery Solution will be displayed as less than the specified capacity.

System Specification (P60)

The system specifications will be described below. The system specifications may differ depending on the derived models.

Item	Specification	Remarks
CPU	Intel Core™ processor Duo Intel Core™ processor Solo	Optional
Cache memory	2MB	
Main memory	256MB / 512MB, Max 4GB Memory type : DDR2 SODIMM	Optional
Main Chipset	Intel 945PM / 945GM , ICH7-M	Optional
Hard disk drive (HDD)	9.5mmH 2.5" HDD 40GB/60GB/80GB/100GB/120GB	Optional
CD drive	CD-ROM, DVD-ROM, RW-Combo, DVD Super Multi	Optional
Graphics	ATI Mobility Radeon X1300/X1400/X1600 (64MB/128MB/256MB) Intel 945GM Graphics (DVTM 64M/128M)	Optional
Sound	High Definition Audio Codec AD1986A	
Network Interface	Modem: V.92 Wired LAN: Intel i82573E 1G + AMT Intel i82573L 1G Wireless LAN: 802.11ABG Bluetooth 2.0+EDR	Optional Optional Optional
PCMCIA Card Slot	PCMCIA Type I and II Compatible	
Ports	IEEE 1394 (4 Pin), USB2.0 x 3, Microphone, Headphone (S/PDIF supported), Modem (RJ-11), LAN (RJ-45), Monitor and TV Out (S-Video), Serial Port, DC Jack, Security Lock Port, 120 Pin Dock Port	Optional
Optional	Fingerprint Sensor, TPM, Dock	
Dimensions (mm)	357 x 265 x 23.9 mm	W x D x H
LCD	15.4" WXGA(1280 x 800), 15.4" WSXGA+(1680 x 1050)	Optional
Weight	2.47Kg	
Battery	Lithium-Ion smart battery: 6 Cells	
Operation Environment	Temperature (storage) : -5 ~ 40°C (operation) : 10 ~ 32° C Humidity (storage) : 5% ~ 90% (operation) : 20% ~ 80%	
Operation Voltage	100 - 240 VAC	
Frequency	50 - 60 Hz	
Output Power	90W	
Output Voltage	19.0VDC	

The system specifications are subject to change without notice. For detailed system specifications, refer to the product catalog.

The capacity of the hard disk drive with Samsung Recovery Solution will be displayed as less than the specified capacity.

Wireless LAN Specification (Optional)

Intel(R) PRO/Wireless 3945ABG Network Connection

Product Specification

Item	Detailed Specifications	
Physical Specifications	Dimensions	(Width X Height) 30.0 x 50.95 mm
	operation temperature and humidity	Same as system operation Temperature: 0°C ~ 70°C Humidity: less than 85%
Power Specification	Power Saving Mode	70 mW
	Receiving Mode	0.95 W
	Transmission Mode	1.4 W
	Power	3.3V
Network Specifications	Compatibility	IEEE802.11a, IEEE802.11b, IEEE802.11g
	Operating System	Microsoft Windows XP - NDIS5 Miniport Driver
	Media Access Protocol	CSMA/CA (Collision Avoidance) with Acknowledgement(ACK)
	Security	Wired Equivalent Privacy support (WEP) 64bit / 128bit WPA*, CCX*

* This piece of equipment supports the Wi-Fi wireless LAN security standard, WPA (Wi-Fi Protected Access) and CCX (Cisco Compatible eXtensions). To connect to a wireless network consisting of the WPA and CCX, certificates or PROSet may be required depending on the network settings. For driver update, visit www.samsung.com and for information on the PROSet installation, refer to "Wireless Network Setup Using the Wireless LAN Setup Program" (p71). For more information, ask your network administrator.

Radio Specifications

RF Band	2.4GHz, 5GHz
Support Channels	Channels allowed per country.
Device	Transceiver
Standard Output Power	5 mW
Transmission Method	11a mode: OFDM 11b mode: DSSS 11g mode: OFDM
Transmission Rate (Mbps) *	11a mode** 11b mode: 11, 5.5, 2, and 1 11g mode*** : 54, 48, 36, 24, 18, 12, 9, and 6
Antenna Type	Internal Antenna 2 EA (Main/Aux)

* The transmission rate may differ from the actual transmission rate.

** 11a mode is supported only when the device is connected with an IEEE802.11a device (e.g. IEEE802.11a compatible Access Point).

***11g mode is supported only when you are connected to an IEEE 802.11g device (e.g. An Access Point supporting IEEE 802.11g).

Abbreviations

A	Amperes
AC	Alternating current
ACPI	Advanced Configuration and Power management Interface
APM	Advanced Power Management
ATA	AT attachment (refers to the hard-drive interface in an AT-compatible computer)
ATAPI	AT attachment packet interface
BBS	Bulletin board system
BIOS	Basic input/output system
C	Centigrade
CD	Compact disc
CD-ROM	Compact disc read-only memory
cm	Centimeters
COM	Communication (as in communication port)
CMOS	Complementary metal-oxide semiconductor
DC	Direct current
DMA	Direct memory access
DPMS	Display power-management signaling
DRAM	Dynamic random access memory
DSTN	Double layer super twist nematic
ECP	Extended capabilities port
EPP	Enhanced parallel port
g	gram
G	Gravity
GB	Gigabytes
hr	hour
Hz	Hertz
IDE	Integrated drive electronics
I/O	Input/output
IRQ	Interrupt request line

ISA Industry Standard Architecture
KB Kilobytes
kg Kilograms
LAN Local-area network
lb. Pounds
LBA Logical block addressing
LCD Liquid-crystal display
m Meters
mA Milliamperes
mAh Milliamperes hour
MB Megabyte
mm millimeter
MPEG Motion Picture Experts Group
MPU Microprocessor unit
ms Millisecond
PDF Portable document format
PC Personal computer
PCI Peripheral component interconnect
PCMCIA Personal Computer Memory Card International Association
POST Power-on self-test
PNP Plug and play
PS/2 Personal System/2
RAM Random-access memory
ROM Read-only memory
SVGA Super video graphics array
TFT Thin-film transistor
USB Universal serial bus
V Volt
VAC Voltage alternating current
VCC Voltage collector current
VDC Voltage direct current
whr Watt hour

Glossary

AC adapter

The AC (or alternating current) adapter regulates current coming into your computer from the wall outlet. The current at the wall outlet is alternating current and needs to be changed by the adapter to DC (direct current) before your computer can use it for power.

ACPI

ACPI (Advanced Configuration and Power Interface)- a method for describing hardware interfaces in terms abstract enough to allow flexible and innovative hardware implementations and concrete enough to allow shrink-wrap OS code to use such hardware interfaces.

BIOS

BIOS stands for basic input/output system. The BIOS is software (often called firmware) that is independent of any operating system. It enables the computer to communicate with the screen, keyboard, and other peripheral devices without using programs on the hard disk.

The BIOS on your computer is flash BIOS, which means that it has been recorded on a flash memory chip that can be updated if needed.

Boot

To start your computer. A cold boot resets the entire computer and runs through all computer self-tests. A warm boot clears out computer memory only.

Boot disk

A disk containing operating system programs required to start your computer. A boot disk can be a floppy disk, hard drive, or compact disc.

Byte

The basic unit of measure for computer memory. A character—such as a letter of the alphabet—uses one byte of memory. Computer memory is often measured in kilobytes (1,024 bytes) or megabytes (1,048,576 bytes).

Each byte is made up of eight bits. For more information on bytes and bits, see an introductory book on computers.

Cache memory

Cache is very fast, zero-wait-state memory located between the microprocessor and main memory. Cache reduces the average time required by the microprocessor to get the data it needs from the main memory by storing recently accessed data in the cache.

CardBus

CardBus technology enables the computer to use 32-bit PC Cards. Hardware in the computer and the Windows operating system provide support for the 32-bit cards. The voltage of 32-bit cards (3.3 volts) is lower than that of 16-bit cards (5 volts). The 32-bit cards can transmit more data at a time than the 16-bit cards, thus increasing their speed.

CMOS memory

CMOS (complementary metal oxide semiconductor) memory is powered by the CMOS battery. The System Setup settings and other parameters are maintained in CMOS memory. Even when you turn your computer off, the information in CMOS memory is saved.

COM port

COM stands for communication. COM ports are the serial ports in your computer.

Compact Disc

A compact disc (CD).

Conventional memory

The first 640 KB of system memory. Operating systems and application programs can directly access this memory without using memory-management software.

Disk

The device used by the computer to store and retrieve information. *Disk* can refer to a floppy disk, hard disk, or RAM disk.

Disk cache

A software device that accumulates copies of recently used disk sectors in RAM. The application program can then read these copies without accessing the disk. This, in turn, speeds up the performance of the application.

A cache is a buffer for transferring disk sectors in and out of RAM. Data stored in a disk cache is a copy of data already stored on the physical disk.

DMA (direct memory access)

A method of transferring data from a device to memory without having the data pass through the microprocessor. Using DMA can speed up system performance.

DPMS

Display Power Management Signalling. Displays or monitors that comply with this can be managed by the Power Management features found in the system setup.

Floppy disk

A removable disk, also called *floppy* or *diskette*.

Hard drive

Also called *fixed* disk. A hard drive is connected to the computer and can be installed or removed. Data written to a hard drive remains until it is overwritten or corrupted.

The 2.5-inch hard drive in your computer was designed for use in a notebook computer. Because hard drives in notebook computers are smaller than those in desktop computers, their maximum storage capacity may be less than that of desktop hard drives. However, because of their smaller size, the drives handle shock and vibration better than larger drives, which is important for a notebook computer.

I/O

Input/output. Refers to peripheral devices, such as printers, that are addressed through an I/O address.

I/O address

I/O stands for input/output. Peripheral devices, such as printers, are addressed through the I/O port address.

IRQ (interrupt request line)

The IRQ is a hardware line that a device uses to signal the microprocessor when the device needs the microprocessor's services. The number of IRQs is limited by industry standards.

LCD (liquid-crystal display)

The LCD screen on your computer differs from the display screen of a desktop monitor. Most desktop monitors use CRT (cathode-ray tube) displays, which work by moving an electron beam across phosphor dots on the back of the screen. The phosphor dots light up to show the image. LCDs use a liquid-crystal solution between two sheets of polarizing material. Electric current passing through the liquid aligns the crystals so that light can or cannot pass through them, creating an image.

MB (megabyte)

1,024 kilobytes.

Megabit

1,048,576 bits or about 128 kilobytes.

Operating system

A program that supervises the computer's operation, including handling I/O. Application programs and users can request operating-system services. A user might request operation-system services to copy files or format a disk. An application program might use the operating system to obtain keyboard input, write data to a file, or write data to a screen.

PC Card

PC Card stands for personal computer card. The Personal Computer Memory Card International Association (PCMCIA) defines the standards used to develop all PC Cards. PC Card types include: modems, Ethernet adapters, SCSI adapters, ATA cards, and memory cards.

PC slot

The PC slot is the hardware slot in the computer where the PC Card is placed.

Pixel

A pixel is an individual dot in a graphic displayed on your computer. The pixels are so close together that they look as though they are connected. An LCD screen displays thousands or millions of pixels.

Plug and Play

A plug and play operating system automatically configures computer components to work with your system. With this type of operating system, you normally do not need to set jumpers on devices or set memory addresses or IRQs.

RAM (random access memory)

The computer's system memory, including conventional and extended memory. You can write to and read from RAM. Information stored in RAM is temporary, and is erased when the system is turned off.

Refresh rate

The refresh rate is the rate at which the image on the LCD screen is rewritten to the screen. A fast refresh rate helps keep the image from flickering.

Resolution

The resolution is the sharpness or clarity of the image on your LCD screen. Resolution is measured by the number of pixels the computer's screen can display. For example, a resolution of 800 x 600 means that the screen can display 800 pixels in row and can display 600 rows. The more pixels displayed, the higher the resolution and the better the image.

ROM (read-only memory)

Permanent computer memory dedicated to a particular function. For example, the instructions for starting the computer when you first turn on power are contained in ROM. You cannot write to ROM. (ROM is not the same as RAM).

Sector

Also known as *disk sector*. The portion of a track that is numbered and can hold a specified number of characters (usually 512 KB).

Shadow RAM

A write-protected area of RAM that contains a copy of the BIOS. As the computer boots, the BIOS is copied from its permanent location in ROM to RAM. The BIOS can be executed much faster in RAM than in ROM. The BIOS remains in shadow RAM until you turn off the computer.

TFT (thin film transistor) LCD

A TFT LCD uses a separate transistor circuit to control each pixel. This technology provides the best resolution for an LCD screen. A TFT LCD is also sometimes called an active matrix LCD.

Contact SAMSUNG WORLD WIDE

[U.K / AUSTRALIA / HONG KONG / INDIA / MALAYSIA / SINGAPORE]

Contact SAMSUNG WORLD WIDE

If you have any comments or questions regarding a Samsung products, contact the SAMSUNG customer care center.

- Customer Care Center ☎ : (U.K) 0870 242 0303 **Web Site:** www.samsung.com/uk
- Customer Care Center ☎ : (AUSTRALIA) 1300 362 603 **Web Site:** www.samsung.com/au
- Customer Care Center ☎ : (HONG KONG) 2862 6001 **Web Site:** www.samsung.com/hk
- Customer Care Center ☎ : (INDIA) 3030 8282 / 1600 1100 11 **Web Site:** www.samsung.com/in
- Customer Care Center ☎ : (MALAYSIA) 1800-88-9999 **Web Site:** www.samsung.com/my
- Customer Care Center ☎ : (SINGAPORE) 1800-SAMSUNG(7267864) **Web Site:** www.samsung.com/sg

[FRANCE] Comment contacter Samsung dans le monde

Si vous avez des suggestions ou des questions concernant les produits Samsung, veuillez contacter le Service Consommateurs Samsung.

- Customer Care Center ☎ : 08 25 08 65 65 **Web Site:** www.samsung.fr

[GERMANY] Kontakt zu Samsung

Falls Sie Fragen oder Anregungen zu Samsung-Produkten haben, wenden Sie sich bitte an den Samsung-Kundendienst.

- Customer Care Center ☎ : 01805 121213 **Web Site:** www.samsung.de

[SPAIN] Contacte con SAMSUNG WORLD WIDE

Si tiene alguna pregunta o comentario referente a nuestros productos, por favor contacte con nuestro Servicio de Atención al Cliente.

- Customer Care Center ☎ : 902 10 11 30 **Web Site:** www.samsung.com/es

[PORTUGAL] Contacte SAMSUNG GLOBAL

Se tem algumas dúvidas ou comentários sobre os produtos Samsung, contacte por favor a nossa linha de apoio a clientes Samsung.

- Customer Care Center ☎ : 808 200 128 **Web Site:** www.samsung.pt

[RUSSIA / UKRAINE] Свяжитесь с SAMSUNG по всему миру

Если у вас есть предложения или вопросы по продуктам Samsung, свяжитесь с информационным центром Samsung.

- Customer Care Center ☎ : (RUSSIA) 8-800-200-0400

Web Site: www.samsung.ru

- Customer Care Center ☎ : (UKRAINE) 8-800-502-0000

Web Site: www.samsung.com/ur

[CHINA] 三星全球服务网

如果您对三星产品有任何疑问或建议，请联系三星客服中心

- Customer Care Center ☎ : 800-810-5858 / (010) 64751880 **Web Site:** www.samsung.com.cn

[Thailand] ติดต่อขงเว็บบไซต์

ติดต่อขงเว็บบไซต์ หากมีคําแนะนําหรือข้อสงสัยเกี่ยวกับผลิตภัณฑ์ขง ติดต่อสอบถามได้ที่ SAMSUNG customer care center

- Customer Care Center ☎ : 1800-29-3232 / 02-689-3232

Web Site: www.samsung.com/th