

A close-up, angled view of a Samsung Q1 mobile phone. The phone is dark-colored, possibly black or dark blue. The screen is on the left, and the control panel is on the right. The control panel features a circular navigation pad with 'Up', 'Down', 'Left', and 'Right' directional arrows, and a central 'Enter' key. Below the navigation pad are three smaller buttons: a 'Call' button, a 'Power' button, and a 'Menu' button. The Samsung logo is visible in the top left corner of the phone's bezel and on the bottom left of the screen. A small 'SRS' logo is located at the bottom center of the screen. The phone is set against a dark background with a light blue curved graphic element at the bottom.

**SAMSUNG**

**SAMSUNG**

**SRS**  
Enclosed LP

# **SAMSUNG Q1**

---

# **User's Guide**

*DIGITall FREEDOM*

# Product Features



## Small but Strong UMPC (Ultra Mobile PC)

---

- Intel Celeron M ULV Processor
- 256MB~Up To 1GB DDR2 Memory
- 1.8", 20~60GB High-Capacity Hard Disk Drive



## 7" WVGA TFT LCD

---

- Basic Resolution of 800x480 Pixels, Maximum Resolution of 2048x1536 Pixels (when an external display is connected)
- Auto Scaler (Automatic Resolution Adjustment) Function to Support High Resolution Output
- Easy-to-Use Touch Screen usable with your fingers.



## Microsoft Windows XP Tablet PC Edition

---

- Resolve PDA and Pocket PC restrictions
- Usability Similar to a Normal PC with Windows



## Powerful Multimedia Functions

---

- Various Multimedia Programs Such as AVStation etc.
- 2 Built-in Array Microphones for Higher Audio Recording Quality SRS Surround Sound



## Multiple Network Support

---

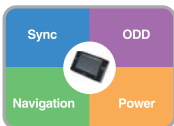
- Wired LAN, Wireless LAN, Bluetooth (Optional)
- Resolves Space Restrictions through the Wireless Communication Function



## Compact, Light-Weight Design for Portability / Polished Design

---

- A mere 779g (Without the Bluetooth modules)
- High-Gloss Front Panel



## Optional Accessories for Additional Convenience

---

- USB Data Cable Enabling Data Exchange with another PC.
- USB External ODD, Ultra-Slim USB External Keyboard
- Power Bank to Extend Use Time

# Using Your Document

Congratulations on your purchase of a notebook computer with the Windows® XP operating system. Whether you are new to using a portable computer or are an experienced user, this user's manual can help you get the most from your computer.

## Manual Documentation Conventions

### Information Icons

---

Three icons and their associated messages appear in this manual. The information icons are placed before the step/information they apply to:



**Warning:**

Indicates the possibility of personal injury.



**Caution:**

Warns you of possible damage to equipment or data.



**Note:**

Informs you of special circumstances.



**Technical Information:**

Informs you of special requirements or limitations for use of item(s).

### Keyboard Conventions

---

Keys that you need to press to perform certain functions are displayed in the manual in brackets. For example:

<Ctrl> indicates the control key (**Ctrl** on the keyboard).

If you need to press two keys at the same time, the key names are shown joined by a plus sign. For example:

<Fn+F8> means that you should press the **Fn** key and hold it and then press the **F8** key.

### CD-ROM Device Naming Convention

---

In many installation programs you will have to get a program from the CD-ROM device. The program installation sequence assumes that the CD is drive d:W, however this is not always the case. The name of the CD-ROM drive is the letter following the letter assigned to your last HDD. For instance, if you have one HDD with two partitions, the HDD is drives C: and D: and the CD-ROM drive is then drive E.



Some devices and software may differ from the descriptions in the User's guide or may not be supplied with the product depending on your computer model.

The actual appearance of the computer may differ from the pictures printed on the cover and in the User's guide.



This manual describes procedures with both the **Stylus Pen** and **Mouse**. 'Single-Click' in this manual also means 'Single-tap' for the Stylus Pen.

## Software User Documentation

---

Your computer is shipped from the factory with several software programs installed. The software may include its own online or printed documentation. Refer to the documentation or the Help options in the software for more information.



The figures and illustrations in this manual may not be identical to those on your system.



### **General Icon Note:**

Some of the Icons used in Windows XP may be placed on the taskbar by selecting (ex: Place the volume icon in the taskbar) in the properties dialog box.

# Contents

<b>Product Features</b>	<b>2</b>
<b>Using Your Document</b>	<b>3</b>
Manual Documentation Conventions	3
<b>Contents</b>	<b>5</b>

## Chapter 1. Getting Started

---

<b>Overview</b>	<b>8</b>
Front View / Status Indicators	8
Top View	9
Right View	10
Left View	10
Rear View	11
<b>Turning the Computer On and Off</b>	<b>12</b>
To turn on the computer	12
To turn off the computer	12

## Chapter 2. Using the Computer

---

<b>Stylus Pen</b>	<b>14</b>
<b>Entering Text</b>	<b>16</b>
Using the Tablet PC Input Panel	16
Dialkeys	19
<b>Volume Control</b>	<b>20</b>
<b>Using the Buttons</b>	<b>21</b>
The Menu Button	21
The Quick Launch Button	22
The Auto Scaler Button	24
<b>CF Card Slot</b>	<b>25</b>
<b>Connecting a Monitor</b>	<b>27</b>
Connecting a Monitor	27
Viewing on a Monitor	27
Dual View	28

## Chapter 3. Introducing Windows

---

<b>About Microsoft Windows XP</b>	<b>31</b>
Get Going with Tablet PC	31
Tablet PC Tutorials	32
Reinstalling Windows XP	32
<b>The Windows XP Screen Layout</b>	<b>33</b>
Desktop	33
Understanding the Start Menu	34
Understanding a Window	35
<b>Control Panel</b>	<b>36</b>
Opening the Control Panel	36
User Account	37
Changing the Resolution and Colors	39

## Chapter 4. Connecting to the Internet

---

<b>Connecting Through a Wired LAN</b>	<b>41</b>
<b>Connecting Through a Wireless LAN</b>	<b>43</b>
Wireless Network Setup	
Using the Wireless LAN Setup Program	48
<b>Using Samsung Network Manager</b>	<b>49</b>
Using the Network	49
Using the network after moving location	52
Sharing Internet Access	53
Network Status Diagnosis	56
<b>Using Bluetooth Devices</b>	<b>57</b>
Bluetooth Software Setup	57
Using Bluetooth	60

## Chapter 5. Using Applications

---

<b>Introducing Programs</b>	<b>65</b>
<b>Using Samsung Update Plus</b>	<b>67</b>
<b>Program Launcher</b>	<b>69</b>
Program Launcher Screen Layout	69
Using Program Launcher	70
<b>Using AVStation premium</b>	<b>71</b>
Start and Screen Layout	71
MUSIC Station	72
PHOTO Station	74
MOVIE Station	78
<b>Using AVStation NOW / AVStation Viewer</b>	<b>82</b>
Start / Exit AVStation NOW	82
Start / Exit AVStation Viewer	83
Screen Layout	84
MUSIC Station	85
MOVIE Station	87
<b>CyberLink PowerDVD</b>	<b>89</b>
<b>Voice Recorder</b>	<b>91</b>
Recording	91

## Chapter 6. Customizing Your Computer

---

<b>Using System Setup</b>	<b>94</b>
Starting System Setup	94
System Setup Screen	95
<b>Setting a Booting Password</b>	<b>97</b>
<b>Changing the Booting Priority</b>	<b>100</b>
<b>Using the Battery</b>	<b>101</b>
Removing and Attaching Battery	101
Charging the Battery	101
Monitoring the Battery Charge	102
Extending the Battery Usage Time	104
Tips for Using Your Computer	107

Travelling with Your Computer	108
Handling Spills	108
Storing the Computer for Long Periods	108

## Chapter 7. Troubleshooting / Appendix

---

<b>Using Magic Doctor</b>	<b>110</b>
<b>Using Norton AntiVirus</b>	<b>111</b>
<b>Restoring the System</b>	<b>112</b>
<b>Reinstalling Software</b>	<b>115</b>
<b>Reinstalling Windows XP</b>	<b>117</b>
Running the System Recovery Media	117
Quick Installation	118
Standard Installation	118
Installing Windows	
When You Cannot Run Windows	120
<b>Questions and Answers</b>	<b>121</b>
Windows Related	121
Display Related	121
Sound Related	123
Wired LAN Related	124
Wireless LAN Related	125
Games and Programs Related	129
Security Center	131
Other	133
<b>Specifications</b>	<b>134</b>
System Specification	134
Wireless LAN Specification (Optional)	135
<b>Abbreviations</b>	<b>136</b>
<b>Glossary</b>	<b>138</b>
<b>Index</b>	<b>142</b>



# Chapter 1. Getting Started

<b>Overview</b>	<b>8</b>
Front View / Status Indicators	8
Top View	9
Right View	10
Left View	10
Rear View	11
<b>Turning the Computer On and Off</b>	<b>12</b>
To turn on the computer	12
To turn off the computer	12

# Overview

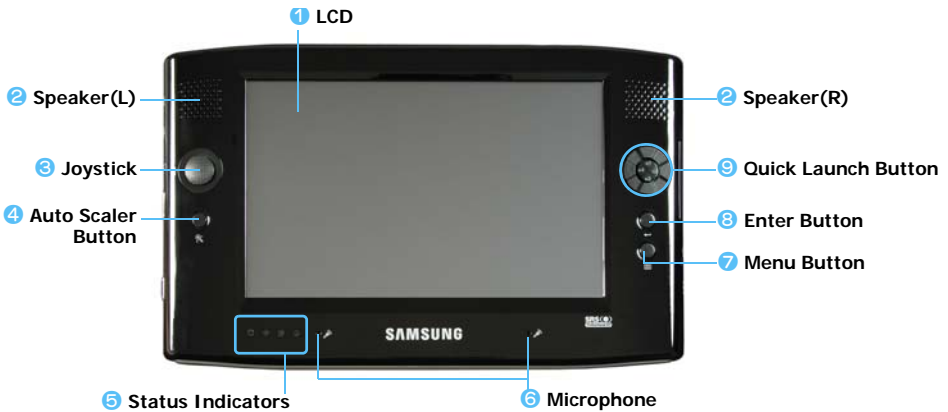


## Before You Start!

An item marked with (\*) may be replaced by another item or may not be supplied with your computer depending on the model.

The actual appearance and color of the contents may differ from the pictures used in the material.

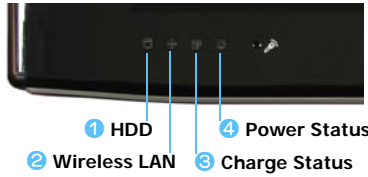
## Front View / Status Indicators



- 1 LCD** The screen images from the computer are displayed here.
- 2 Speaker** Used to generate sound.
- 3 Joystick** Plays the same role as the direction keys (←, →, ↑, ↓) on the keyboard. Used as a joystick when playing games.
- 4 Auto Scaler Button** (Automatic Resolution Adjustment Button)  
Press this button to change the screen resolution. Auto Scaler provides 3-step resolutions. Whenever you press this button, the screen resolution changes to 800x480 Default Resolution > 800x600 > 1024x600 sequentially. (Page 32)
- 5 Status Indicators** Shows the operating status of the computer. The corresponding operating LED is lit when the corresponding function operates. (Page 17)
- 6 Microphone** Used to record sound. (Page 104)
- 7 Menu Button** Press this button to launch the Menu Program. (Page 29)  
The Menu Program provides shortcuts to frequently used functions on the computer. You can easily change the settings.
- 8 Enter Button** Press this button to select an item. It is the same as the Enter key on the keyboard.
- 9 Quick Launch Button** You can register a frequently used program to launch it just by pressing this button. (Page 30)

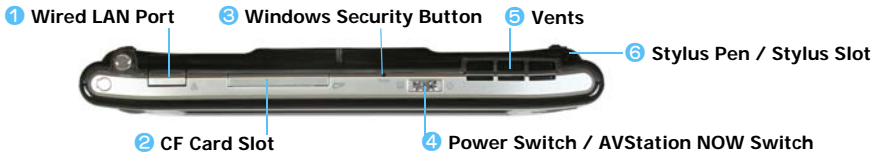


# Status Indicators



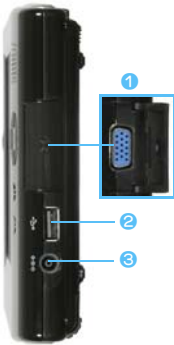
- 1 **HDD**  
This turns on while the hard disk drive is being accessed.
- 2 **Wireless LAN**  
This turns on when the wireless LAN is operating. (Page 53)
- 3 **Charge Status**  
This shows the power source and the battery charge status.  
**Green:** When the battery is fully charged or the battery is not installed.  
**Amber:** When the battery is being charged.  
**Blinks:** When pressed other button in HOLD status.  
**Off :** When the computer is running on battery power without being connected to AC power.
- 4 **Power Status**  
This shows the computer operating status.  
**On :** When the computer is operating.  
**Blinks:** When the computer is in Standby mode.

## Top View



- 1 **Wired LAN Port**  
A port to which an Ethernet cable is connected; connects the computer to a LAN. (Page 50)
- 2 **CF Card Slot**  
A slot into which a CF card is inserted. (Page 33)
- 3 **Windows Security Button**  
Pressing this button is the same as pressing the <Ctrl>+<Alt>+<Del> keys on the keyboard.
- 4 **Power Switch / AVStation NOW Switch**  
You can turn the computer on or off by sliding this switch to the right and releasing it. (Page 20)  
You can launch AVStation NOW by sliding this switch to the left when the computer is turned off. (Page 87)  
To turn the computer on, slide the Power switch to the right and hold it for more than 0.1 seconds before releasing it.
- 5 **Vents**  
The internal heat of the computer is emitted through these holes.  
If the vents are blocked the computer may over-heat. This may be dangerous so avoid blocking the vents.
- 6 **Stylus Pen / Stylus Slot**  
The Stylus is used to enter information through the touch screen. (Page 22)  
You can keep the Stylus Pen in the Stylus Slot.

## Right View



### 1 Monitor Port

A port used to connect a monitor, TV or projector supporting a 15-pin D-SUB interface. (Page 34)

### 2 USB Port

A port used to connect a USB device such as a USB keyboard, mouse, etc.

### 3 DC-in Jack

A port used to connect the AC adapter supplying power to the computer.

## Left View



### 1 USB External ODD Power Port

A port used to supply power to the external USB ODD.

### 2 USB Port

A port used to connect a USB device such as a USB keyboard, mouse, USB ODD, etc.

### 3 Headphone Jack

A jack used to connect the headphones.

### 4 Volume Control Button

A button used to control the volume. (Page 28)

### 5 HOLD Switch

If this switch is in the HOLD position (upside), none of the buttons will function.

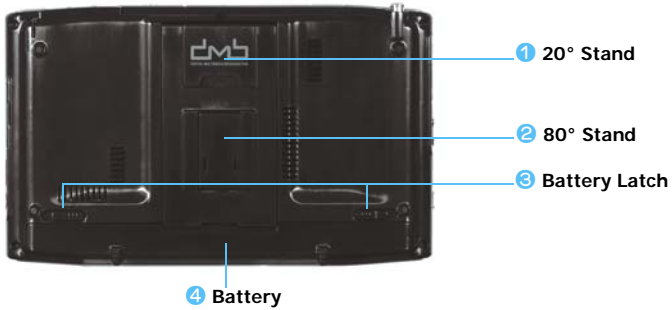
If the computer enters HOLD mode, the **Lock** icon appears on the screen for a moment and the **Charge LED** ([**ICON**]) blinks for a moment.

To release HOLD mode, slide the HOLD switch downwards.

### 6 Hand Strap Hole

You can connect the Hand Strap here.

## Rear View



**1 20° Stand**

You can position the computer at a 20° degree angle so that you can comfortably enter texts.

**2 80° Stand**

You can position the computer at an 80° degree angle so that you can comfortably view the screen.

**3 Battery Latch**

The latch used to remove or install the battery. (Page 112)

**4 Battery**

A Lithium Ion rechargeable battery which supplies power to the computer. (Page 112)

# Turning the Computer On and Off

## To turn on the computer

- 1 Install the **battery** and connect the **AC adapter**. (Refer to the **Getting Started Guide**.)
- 2 Adjust the **stand** at the back of the computer at a comfortable angle.
- 3 Slide the **Power Switch** to the right, hold it for more than **0.1 seconds** and then release it. The computer is turned on.



When running the computer on battery power, the LCD brightness is automatically dimmed to save battery power.

To increase the LCD brightness, press the **Menu button** and press **Brightness Up**. (Page 29)

## To turn off the computer

- 1 Click the **start** button (  ) on the taskbar.
- 2 Click **Turn Off Computer**.



- 3 Click **Turn Off**.



When the system cannot be shut down due to a system error, turn it off by sliding and holding the **Power Switch** for more than 4 seconds.

After that, when turning it on by sliding the Power Switch, the disk checking program may launch.



## Chapter 2. Using the Computer

<b>Stylus Pen</b>	<b>14</b>
<b>Entering Text</b>	<b>16</b>
Using the Tablet PC Input Panel	16
Dialkeys	19
<b>Volume Control</b>	<b>20</b>
<b>Using the Buttons</b>	<b>21</b>
The Menu Button	21
The Quick Launch Button	22
The Auto Scaler Button	24
<b>CF Card Slot</b>	<b>25</b>
<b>Connecting a Monitor</b>	<b>27</b>
Connecting a Monitor	27
Viewing on a Monitor	27
Dual View	28

# Stylus Pen

A Stylus Pen is used instead of mouse and provides the same function.



## Before You Start!

It is recommended to connect and use a USB keyboard and mouse when using the computer for a long time.

## Taking the Stylus Pen Out

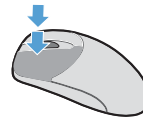
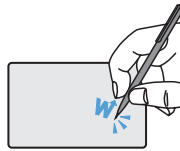
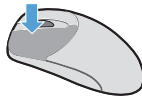
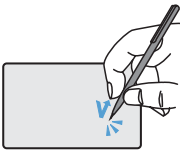
Pull the Stylus Pen upwards.



When finishing using the pen, return it to the Stylus Slot.

## Stylus Pen Functions

	Stylus Pen	Function
Single-click	Single-tap	Single-tap with the pen to select an item.
Double-click	Double-tap	Double-tap with the pen to run an item.
Right-click	Press and Hold	Press and hold for more than 3 seconds with the pen to display the Pop-up menu.
Drag	Drag	Press an item and drag it with the pen to move the item.



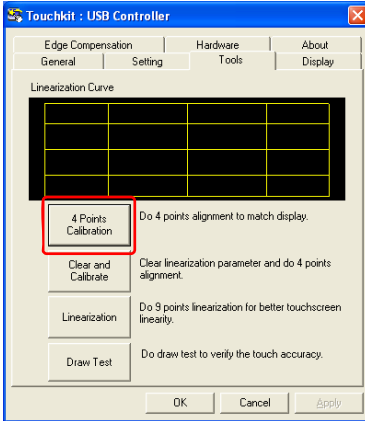
## Learning How to Use the Stylus Pen

Select **Start > Get Going with Tablet PC** to learn how to use the Stylus Pen. (Page 38)

# Calibrating the Stylus Pen

When using the Stylus Pen for the first time or the pointing position of the Stylus Pen is incorrect, you can correct the pointing position using the **TouchKit** program.

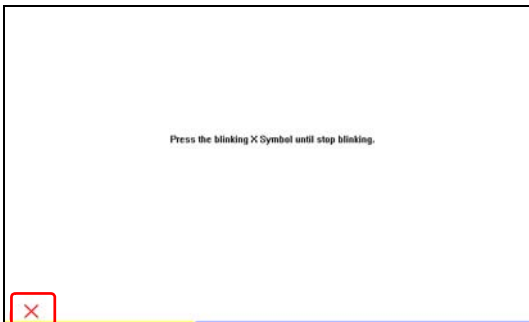
- 1 Select **Start > All Programs > Touchkit > Configure Utility**.
- 2 In the **Tools** tab, press the **4 Points Calibration**.



## Enhancing the Accuracy

If a more precise correction is required, you can correct the pointing position by using **9-Points** or **25-Points** Calibration.

- 1 In the **Linearization Style** item in the **Settings** tab, select **9-Points** or **25-Points** and then press the **Apply** button.
- 2 In the **Tools** tab, press **Linearization**. The higher the number, the more precise a correction is provided.
- 3 Press and hold the **X-symbol** displayed on the screen until it stops blinking. The **X-symbol** appears repeatedly according to the selected number of points.



- 4 If the **Calibration Result** window appears, click the **OK** button. The pointing position of the Stylus Pen is corrected.

# Entering Text

You can enter texts by using the **Tablet PC Input Panel** or **DialKeys** on this computer.



## Before You Start!

Using a USB keyboard is more convenient over long periods of use.

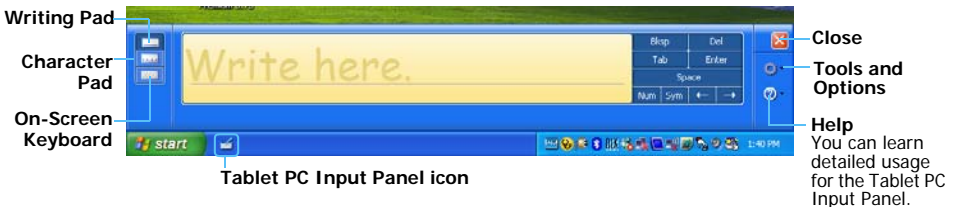
For example, to enter texts in **Notepad**, select **Start > All Programs > Accessories > Notepad** and run **Notepad**.

## Using the Tablet PC Input Panel

The **Tablet PC Input Panel** is an on-screen letter input pad provided by Windows. Using it, you can enter letters with the Stylus Pen when a keyboard is not available.


You can enter letters using the **Tablet PC Input Panel** in 3 ways.

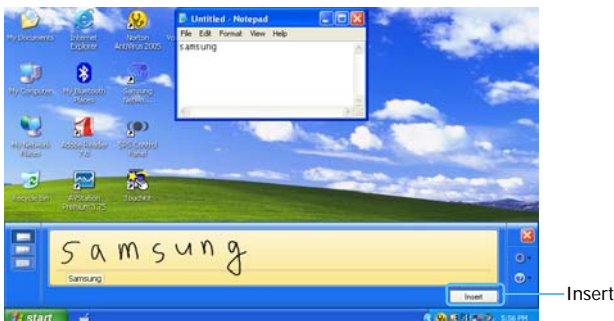
Click on the **Tablet PC Input Panel** () icon on the taskbar.



## Entering text using the Writing Pad

You can enter text on the Writing Pad using the Stylus Pen.

- 1 In the **Tablet PC Input Panel**, click the **Writing Pad** icon () .
- 2 Write text in the input area of the Writing Pad with the Stylus Pen and wait a moment. The written letters are converted into the corresponding computer characters. Press the **Insert** button to enter the converted letters.

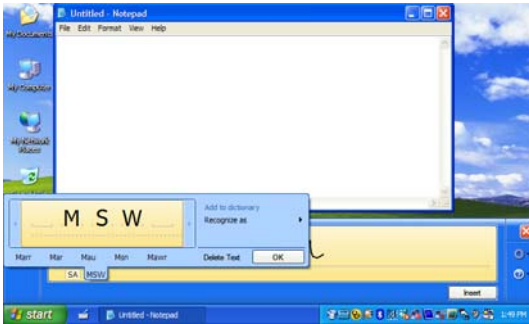







## Editing Letters

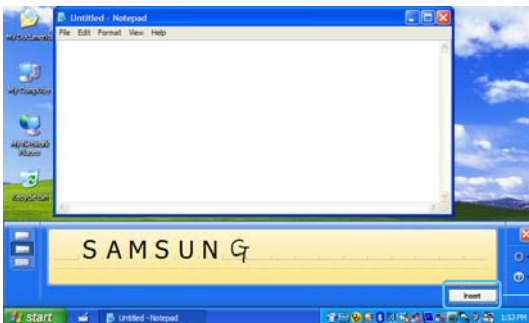
Overwrite wrong letters or press the lower part of a letter to select another letter from the displayed letters.



## Entering text using the Character Pad

You can write a letter in each cell of the Character Pad with the Stylus Pen.


- 1 In the **Tablet PC Input Panel**, click the **Character Pad** icon ().
- 2 Write a letter in the cell of the Character Pad with the Stylus Pen and wait a moment. The written letter is converted into the corresponding computer character. Press the **Insert** button to enter a converted letter.

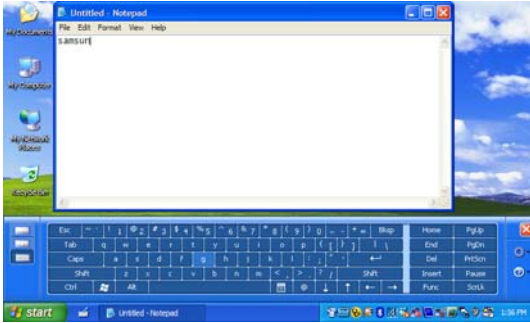


Insert

# Entering text using the On-Screen Keyboard

The On-Screen Keyboard displays a standard keyboard on the screen so that you can enter a letter by pressing the corresponding key on the screen.


- 1 In the **Tablet PC Input Panel**, click the **On-Screen Keyboard** icon (  ).
- 2 Press a letter on the screen with the Stylus Pen.

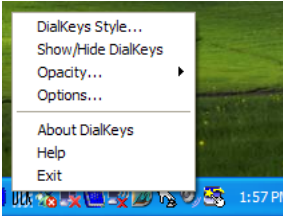


# Dialkeys

**DialKeys** is an on-screen keyboard designed to be used with compact touch screen computers.

You can enter letters using the **DialKeys** by pressing a key on the screen with your thumbs while holding both of the lower corners of the computer with your hands.

- 1 Click on the **Dialkeys icon** () on the taskbar for more than 3 seconds and select **Show/Hide DialKeys** from the pop-up menu.



- 2 **Dialkeys** appears on both lower corners of the screen. Enter letters using your thumbs.



Corresponds to the Enter key on a keyboard.



Corresponds to the space bar on a keyboard.



Minimizes the Dialkeys.




Corresponds to the Backspace on a keyboard.



Move the current window upwards.



## To View Detailed Usage of the Dialkeys

Click on the **Dialkeys icon** () on the taskbar for more than 3 seconds and select **Help** from the pop-up menu.


# Volume Control

You can control the volume with the Volume Control button or Volume Control program.


## Using the Volume Control with the Volume Control Button

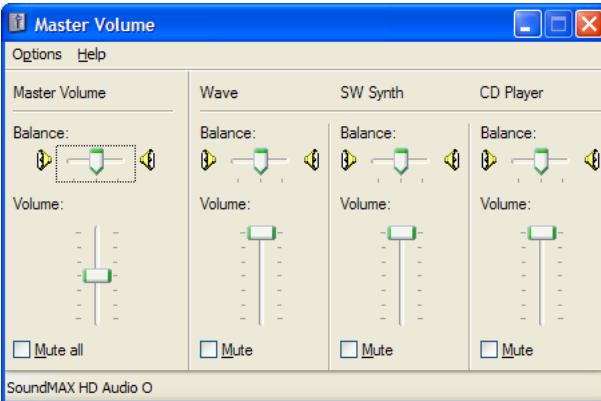
Press the top of the **Volume Control Button** () (+) to turn up the volume or press the bottom of the button (-) to turn down the volume.

## Using the Volume Control with the Volume Control Program

Click on the **Volume** icon () on the taskbar and slide the volume slide bar up or down.



Alternatively, double-click on the **Volume** icon () and adjust the master volume control.



# Using the Buttons

The procedures to use the **Menu**, **Quick Launch** and **Auto Scaler** buttons are described below.



## The Menu Button (☰)

Press the Menu button to launch the Menu Program. The Menu Program provides shortcuts to frequently used functions on the computer. You can easily change the settings.

Press the Menu button again or press a point on the screen to hide the Menu Program.



Menu Items	Function
<b>Brightness Up</b>	Whenever this item is pressed, the LCD brightness is increased by one step.
<b>Brightness Down</b>	Whenever this item is pressed, the LCD brightness is decreased by one step.
<b>Wireless LAN ON (OFF)</b>	Press this item to turn the Wireless LAN on or off.
<b>Wired LAN ON (OFF)</b>	Press this item to turn the Wired LAN on or off.
<b>Sound ON (OFF)</b>	Press this item to turn the volume on or off.
<b>Backlit OFF</b>	Press this item to turn the LCD backlight off. To turn it on again, press a point on the LCD screen once.

<b>LCD/CRT</b>	<p>Press the item to view screen images on an external monitor. When pressing this item once, screen images are displayed on the LCD. When pressing this item twice, screen images are displayed on both the LCD and the CRT (external monitor) simultaneously.</p>
<p> CRT Output Only is not supported.</p>	
<b>SRS</b>	<p>Press this item to set up the SRS function. SRS provides surround sound even with 2 speakers by extending the space perception. Whenever this item is pressed, the following function is selected. <b>WOW XT:</b> For listening to music. <b>Trusurround:</b> For watching movies. <b>SRS OFF:</b> Turns the SRS function off.</p>
<b>Battery</b>	Shows the remaining battery charge.
<b>Rotation</b>	<p>Whenever this item is pressed, the screen rotates by 90 degrees.</p> <p> ■ When rotating the screen, a part of the screen image may not be displayed in some software programs. ■ Since the Rotation function is supported for the 800x480 pixels resolution only, if the Rotation function does not work when pressing the item, set the screen resolution to 800x480 pixels first by pressing the Auto Scaler button.</p>

## The Quick Launch Button

You can register a frequently used program to launch the program, just by pressing this button.



The procedures to change the default settings are described below.

## Default Setting


Quick Launch button is defined as follows by default.

	Function	Description
<b>u1</b>	Mouse Scroll Up	Scrolls up in the current window.
<b>u2</b>	Back	Moves to the previous page in Internet Explorer or Windows Explorer.
<b>u3</b>	Mouse Scroll Down	Moves to the next page in Internet Explorer or Windows Explorer. Scrolls down in the current window.
<b>u4</b>	Forward	Scrolls down in the current window.

## Changing the Settings

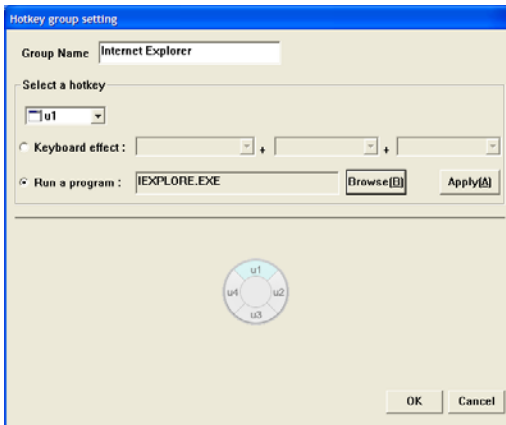
---

The procedures to change the default settings are described below.

- 1 Double-click the **Magic Keyboard** icon (  ) on the taskbar.
- 2 Click the **add** button.
- 3 Enter a name in the **Group Name** field and select a shortcut key in the **Select Shortcut Key** field.
- 4 Select the **Run Program** option, click the **Browse** button, select a program to be launched and click the **Open** button.

Example) C:\WProgram Files\Internet Explorer\IEXPLORE

To use the keyboard shortcut function, select the **Keyboard Effect** option and then define a shortcut key combination.



- 5 Click the **Apply** button and click the **OK** button to complete the settings.

# The Auto Scaler Button

The default resolution of this computer is 800x480 pixels. In the default resolution, the complete screen image of programs designed for high resolutions may not be displayed properly. In this case, press the **Auto Scaler button**(Automatic Resolution Adjustment Button) on the left side of the computer and select a higher screen resolution.

When pressing the **Auto Scaler** button, the **Auto Scaler menu** appears. Whenever this button is pressed, the screen resolution changes to 800 x 480 (Default Resolution) > 800 x 600 > 1024 x 600 sequentially.



Example)  
Selecting a **800 x 480** pixels resolution



Example)  
Selecting a **800 x 600** pixels resolution



The **Auto Scaler** button provides a function that fits high resolution screen images to the screen size and does not support all resolutions supported by the graphics chipset. To select a resolution, which is not supported by Auto Scaler, use the Display Properties. (Page 46)



## About the 1024X768 Pixels Resolution

The 1024x768 pixels resolution is also fitted to the screen size. You can select the 1024X768 pixels resolution by selecting the **Start > Control Panel > Appearance and Themes > Display > Setting** tab. (Page 46)



# CF Card Slot

A CF card slot is provided so that you can use CF cards. A CF card is a removable storage device that can be used to exchange data with digital devices such as a digital camera, PDA, etc. conveniently.



## Before You Start!

This computer supports CF card types I and II.

## Using the Card

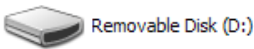
---

- 1 Insert a card into the slot in the correct direction.



- 2 The card drive appears. If it does not appear, click **Start > My Computer**.
- 3 Double-click the removable disk and you can save, move and delete files on and to the card.

### Devices with Removable Storage



You can only use a formatted card. If it is not formatted, refer to the descriptions for 'Formatting a Card'.

## Removing the Card

---

Hold the end of the CF card and take it out.

## Formatting the Card

---

You have to format a card first to use it.



If a card is formatted, all data will be deleted. Before formatting a card, please backup your data.

**1**

Select **Start > My Computer**.

**2**

Press a removable disk with the Stylus Pen for more than 3 seconds and select **Format** from the pop-up menu.

**3**

Click the **Start** button to begin formatting the card.



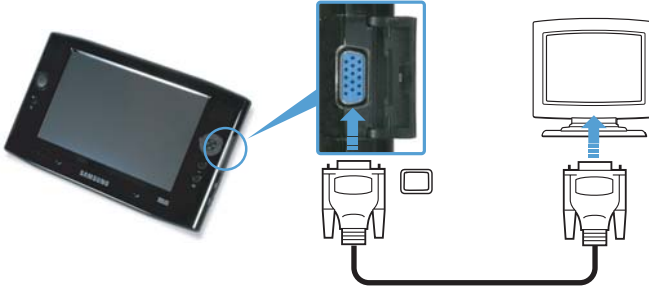
To use a CF card on both a computer and another digital device such as a digital camera, it is recommended formatting the memory card in the digital device. When formatting the memory card in the computer, you may have to format the memory card for the other digital device again to use the memory card with that device.

# Connecting a Monitor

Using an external display device is useful when you are giving a presentation or watching a movie through your TV.

## Connecting a Monitor

Open the Monitor OUT port cover by pulling the groove of the cover and connecting a monitor.



## Viewing on a Monitor

- 1 Press the **Menu** button.
- 2 Press the **LCD/CRT** item once to display screen images on the LCD screen.

When pressing the item twice, you can view screen images on both the LCD and CRT screens simultaneously.



**LCD:** Computer Screen  
**CRT:** External Monitor Screen



Outputting to CRT only is not supported.

## Dual View

Dual View is a function that enables you to view a computer screen over two display devices. The **Menu** button does not support Dual View mode. You have to use the 'Display Properties' of Windows to use Dual View.



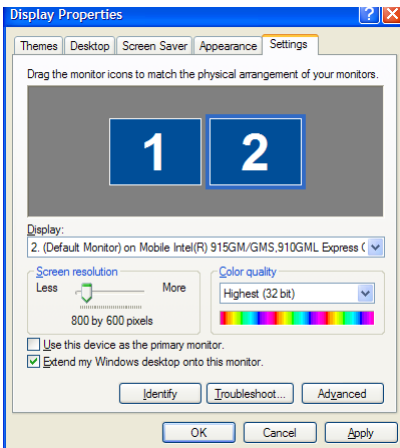
When using Dual View, use a USB mouse.

Using a mouse to move between screens is convenient. You cannot move between screens with the Stylus Pen.

## Using Dual View to View an Extended Screen

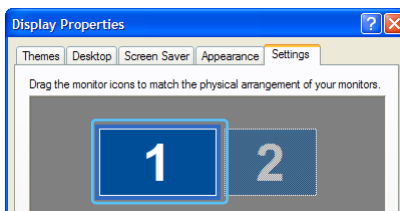
Check if an external display device has been properly connected and configure Dual View.

- 1 Select **Start > Control Panel > Appearance and Themes > Display**.
- 2 Click the **Settings** tab.
- 3 Click the monitor '2' icon, select the '**Extend my Windows desktop onto this monitor**' check box and click **Apply** and then the **OK** button.



- 4 If you have set the LCD as the primary display device, the primary display device (the LCD) is indicated as '1', and the secondary display device is indicated as '2'. Now you can view the screen through two monitors.

It is recommended setting the LCD screen as the primary device ('1') when using Dual View.

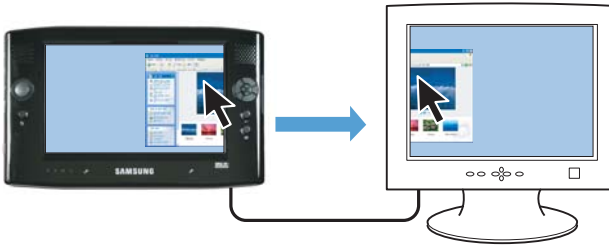


If the screen of the secondary display device is displayed at **640x480** pixels with **256** colours, select **Start > Control Panel > Appearance and Themes > Display > Settings** tab > **Monitor 2** and change the settings to the desired screen resolution and colour quality.

## To Move a Window between Monitors in Dual View Mode

---

Click and hold a window title bar on the primary display device ('1') with the mouse and drag the window title bar to the secondary display device ('2') to move the window.



## Deactivating Dual View Mode

---

- 1 Select the **Start > Control Panel > Appearance and Themes > Display > Settings** tab.
- 2 Click the monitor '2' icon, unselect the '**Extend my Windows desktop onto this monitor**' check box and then click **Apply**.

A Samsung tablet PC is shown at an angle, with a blue overlay. The word "SAMSUNG" is visible on the bottom left of the tablet. The background is a solid blue color.

## Chapter 3. Introducing Windows

<b>About Microsoft Windows XP</b>	<b>31</b>
Get Going with Tablet PC	31
Tablet PC Tutorials	32
Reinstalling Windows XP	32
<b>The Windows XP Screen Layout</b>	<b>33</b>
Desktop	33
Understanding the Start Menu	34
Understanding a Window	35
<b>Control Panel</b>	<b>36</b>
Opening the Control Panel	36
User Account	37
Changing the Resolution and Colors	39

# About Microsoft Windows XP

The Microsoft Windows XP Tablet PC Edition (hereafter, Windows) operating system is installed on this computer.

Microsoft Windows XP Tablet PC Edition is an operating system to which additional features for the tablet PC, such as a hand-writing recognition function, have been added, on the basis of Microsoft Windows XP Professional, for the user's convenience.

You can learn elementary functions for using this tablet PC through the **Get Going with Tablet PC** and **Tablet PC Tutorials**.



The computer has adopted touch screens so that you can operate the computer with your hands and does not accord completely with the characteristics of a typical tablet PC.

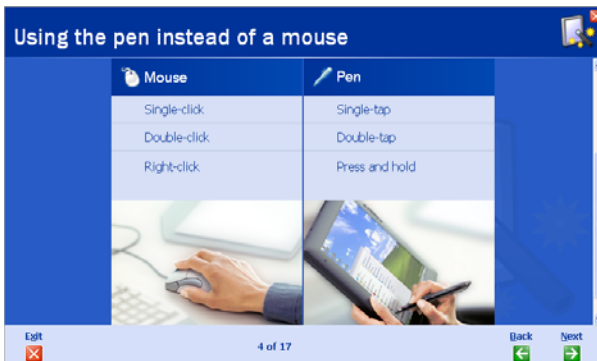
In addition, since a Stylus Pen is provided instead of a Tablet Pen, the **Tablet and Pen Settings** provided by the Windows XP Tablet PC Edition are not supported **Pen Options** completely.

To calibrate the Pen, use the **Toutchkit** program. (Page 23)

## Get Going with Tablet PC

Select **Start > All Programs > Get Going with Tablet PC**.

The **Welcome to tablet computing** screen appears. Click **Start** to learn how to use your tablet PC.



## Tablet PC Tutorials

You can tour elementary functions of your tablet PC and learn how to hand-write on the Writing Pad through the Tablet PC Tour.

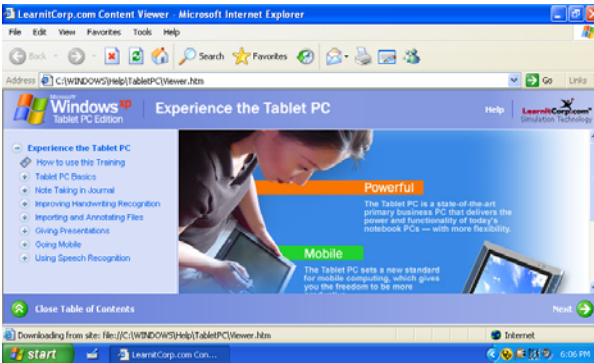


Tablet PC Tutorials only supports the **1024x768** pixels resolution.

Before running the Tutorials, select the **Start > Control Panel > Appearance and Themes > Display > Settings** tab and change the screen resolution to **1024x768** pixels.

Select **Start > All Programs > Tablet PC > Tablet PC Tutorials**.

The Tablet PC Tour screen appears. Click **Next** to learn how to perform 'Note Writing', 'Entering texts with the Tablet PC Input Panel', etc.



## Reinstalling Windows XP

If you cannot start up Windows due to damage to the system or errors frequently occur, you can reinstall Windows using the **System Recovery Media** (DVD). (Page 125)

You can use the system recovery media by connecting the USB External ODD to the system.



# The Windows XP Screen Layout

The screen layout of Windows XP Tablet PC Edition is the same as that of Windows XP.

## Desktop

The desktop is the working area on the computer. It consists of a large workspace and a taskbar at the bottom as shown in the figure below.






1 Start	Opens the Start menu.
2 Tablet PC Input Panel	The Input Pad used to enter letters.
3 Taskbar	Running programs are displayed here.
4 Language Bar	Switches the text input language.
5 System Tray with Clock	Displays some program icons that are currently running. Infrequently used icons are hidden. When clicking the left arrow icon, hidden icons are displayed.

# Understanding the Start Menu

The Start menu includes everything that is required to start Windows. From the Start menu it is possible to run a program, open a file, assign system users with Control Panel, receive support by clicking Help and Support, and search desired items from the computer or Internet by clicking Search.



---

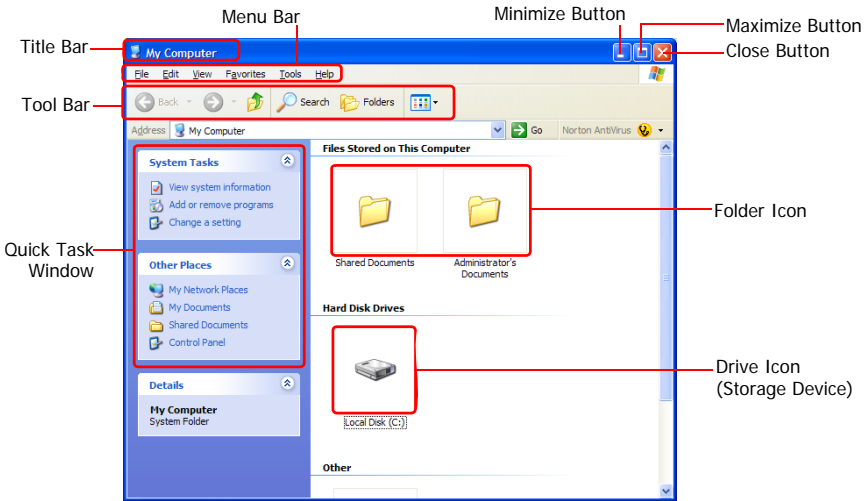
	
<b>Control Panel</b>	
<b>Help and Support</b>	
<b>Search</b>	
<b>Run</b>	

---

# Understanding a Window

A window is the basic component in working with the computer. The My Computer window, which is a window for the computer's hard drive, will be used as an example here to show the basic composition of a window.

Click **Start > My Computer**.



Double-click the hard drive (local disk) to view internal folders and files stored in it. If the contents do not appear, click **Show the contents of this folder**.



## What is a drive?

A storage device in which files and folders are saved in, and read from.

## What is a folder?

A folder is used to group and manage files systematically, and may include files in sub-folders. It is similar to a bookshelf.

## What is a file?

A file is a document or various kinds of material that is generated as a result of program operation. It is also called data.



## To view the entire structure of the drive

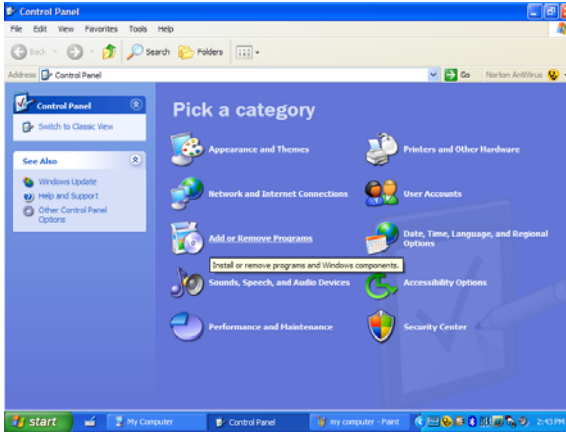
Click the Folder icon in the taskbar to view the entire structure. Click again to return to the Quick Task Window.











# Control Panel

In the Control Panel, tools to configure Windows are collected.

## Opening the Control Panel

Select **Start > Control Panel**.



Name	Function
 <b>Appearance and Themes</b>	Used to change the appearance of Windows. Using this function, you can change the Desktop, apply a theme and a screen saver to the computer, and change the Start menu and Taskbar.
 <b>Network and Internet Connections</b>	Using this function, you can configure the network settings or configure and add Internet connections.
 <b>Add or Remove Programs</b>	Using this function, you can add or remove a program from Windows.
 <b>Sound, Speech and Audio Devices</b>	Using this function, you can adjust the volume, select a sound scheme, and set up speakers.
 <b>Performance and Maintenance</b>	Using this function, you can set Windows performance options. In addition, you can manage the hard disk drive and hardware.
 <b>Printers and Other Hardware</b>	Using this function, you can add or configure a printer, mouse, keyboard, scanner, camera, or gaming device, etc.
 <b>User Accounts</b>	Using this function, you can add or set a Windows XP user account.
 <b>Date, Time, Language and Regional Options</b>	Using this function, you can configure the date, time, language, regional settings.
 <b>Accessibility Options</b>	Using this function, you can select options for weak-eyed and disabled persons.
 <b>Security Center</b>	Using this function, you can check the current security status to protect the user's computer and configure the security settings for the firewall, virus anti-virus program, etc.

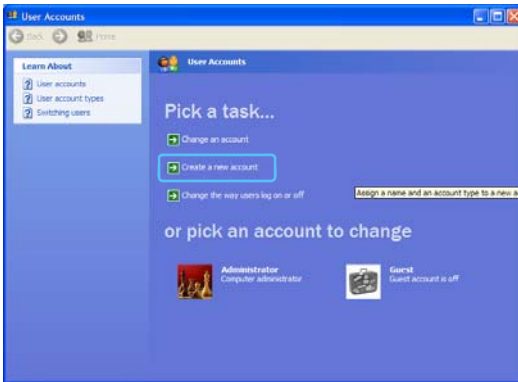
# User Account

Windows XP allows each user to use a computer with his user account. The procedures to add a user account and switch between user accounts are described below.

## Adding a User Account

---

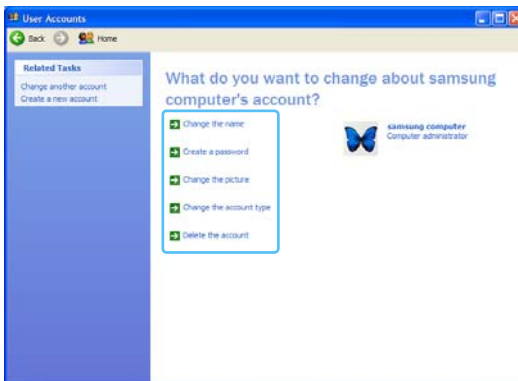
- 1 Select **Start > Control Panel**.
- 2 Double-click **User Accounts** and click **Create a New account**.



- 3 Click the **Tablet PC Input Panel** icon, enter a name and then click the **Next** button.
- 4 Select an account type, click **Create Account**, and then check the newly created account in the user account screen.

If you cannot see the bottom of the screen, press and drag the scroll bar of the window with the Stylus Pen.

- 5 To change the user account information, click an account to be changed.  
You can change the account name, password, type and picture.



## Deleting a User Account

---

- 1 Select **Start > Control Panel > User Accounts**.
- 2 Click a user account to be deleted and click **Delete Account**.

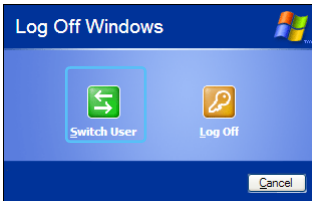


You cannot delete the current login user account.

## Switching Users

---

- 1 Select **Start > Log Off**.
- 2 Click **Switch User**.

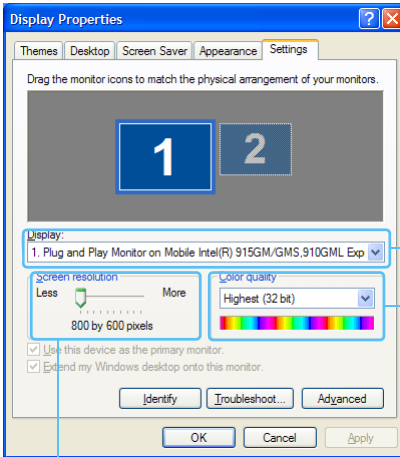


- 3 Click a user account to login to the Start screen.  
Login with a new user account.

# Changing the Resolution and Colors

The resolution means the number of pixels displayed on the screen. When setting the resolution higher, items on the Desktop become smaller and more items can be displayed on the screen. The higher the color quality, the more colors are displayed on the screen.

- 1 Select **Start > Control Panel > Appearance and Themes > Display**.
- 2 Click **Settings** and change the **Screen Resolution** and **Color Quality** and then click **OK**.



You can check your graphics chipset.

To set the color quality, select a color quality in the Color quality field.

To set the resolution, slide the resolution slide bar to a desired resolution in the Screen resolution field.



- If 1024x768 or a higher resolution is selected, the entire screen is not displayed on the LCD screen. In this case, you have to move the mouse pointer up, down, left or right to view the hidden part of the screen image.

- **If the 800x480 resolution is not available**

When selecting the 800x600 or 1024x600 resolution by pressing the Auto Scaler button, the 800x480 resolution may not appear in the Display Properties window. In this case, press the **Auto Scaler** button and select the 800x480 resolution.



## Chapter 4. Connecting to the Internet

<b>Connecting Through a Wired LAN</b>	<b>41</b>
<b>Connecting Through a Wireless LAN</b>	<b>43</b>
Wireless Network Setup	
Using the Wireless LAN Setup Program	48
<b>Using Samsung Network Manager</b>	<b>49</b>
Using the Network	49
Using the network after moving location	52
Sharing Internet Access	53
Network Status Diagnosis	56
<b>Using Bluetooth Devices</b>	<b>57</b>
Bluetooth Software Setup	57
Using Bluetooth	60



# Connecting Through a Wired LAN

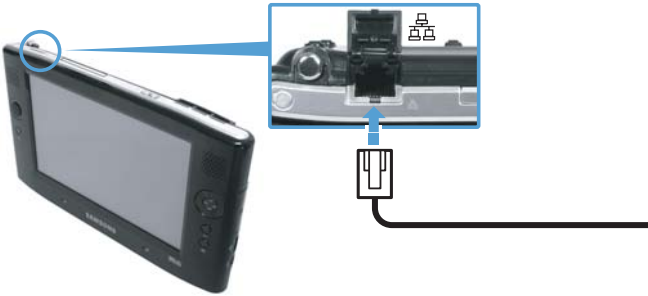


## Before You Start!

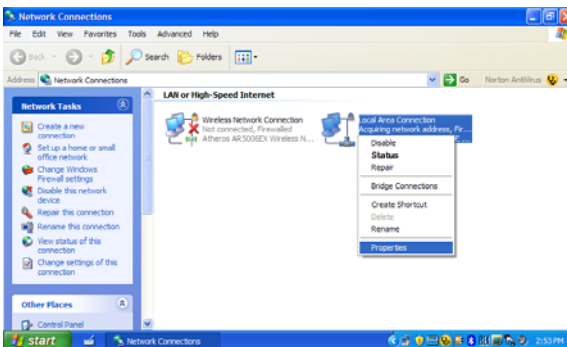
You can also configure the network settings using the Samsung Network Manager. (Page 56)

Before configuring the Wired LAN, you have to turn the Wired LAN on, if it is turned off. Press the **Menu** button and press the **Wired LAN ON** item to turn it on.

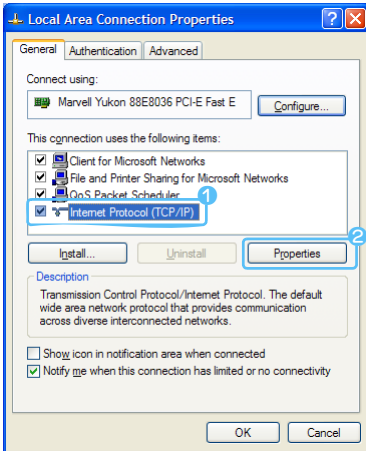
- 1 Connect a LAN cable to the computer's LAN port.



- 2 Click **Start > Control Panel**.
- 3 Click **Network and Internet Connections** in the [Control Panel] window.
- 4 Click **Network Connections** in the [Network and Internet Connections] window.
- 5 Right-click (press and hold the Stylus Pen for more than 3 seconds) the **Local Area Connection** icon and click **Properties**.



- 6 On the **General** tab, select "Internet Protocol(TCP/IP)" and click **Properties**.



## 7 To use DHCP:

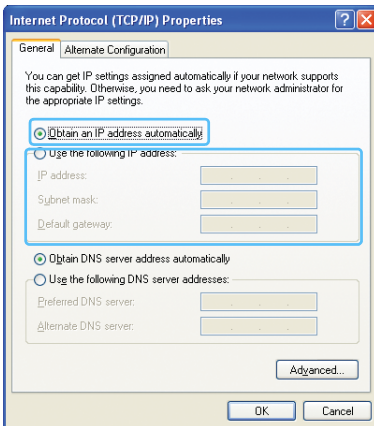
On the **General** tab, select “Obtain an IP address automatically” and “Obtain DNS server address automatically”. Click **OK**.

### To use a static IP:

On the **General** tab, select “Use the following IP address” and fill in the IP address, Subnet mask, Default gateway, Preferred DNS server, and Alternative DNS server fields. Click **OK**.

### To use both DHCP and static IP simultaneously:

On the **Alternate Configuration** tab, click **User configured** and fill in the fields. Click **OK**.



# Connecting Through a Wireless LAN (Optional)

A wireless network (Wireless LAN) environment is a network environment that enables communication between multiple computers at home or a small-size office through wireless LAN devices.

Using the wireless network connections between the systems, you can use normal network functions such as sharing of files, folders and printers. When a computer-to-computer network has been established, a computer that is not connected to the Internet can share the Internet by accessing another computer connected to the Internet. For details, see "Sharing Internet Access" on page 53.



A wireless LAN card is optional. The model of the wireless LAN card is determined by the relevant product.

To view the installed wireless LAN card, click Start > Control Panel > Performance and Maintenance > System > Hardware tab > Device Manager.

The wireless LAN connection settings will be described on the basis of the Windows XP Service Pack 2 installed computer.

It is recommended using the default settings provided by Windows XP for the wireless LAN settings for Windows XP installed computers.

To setup using the software supplied by the wireless LAN card manufacturer, refer to "Wireless Network Setup Using the Wireless LAN Setup Program" (p46).

To use the Wireless LAN, you have to turn the Wireless LAN on first, if it is turned off.

Press the **Menu** button and press the **Wireless LAN ON** item to turn it on. If the Wireless LAN is turned on, the **Wireless LAN LED** ( ) is lit.

Wireless network connections can be classified into two categories.

## 1) Access Point (AP)

You can connect to an AP to use the network. This is possible only in an environment equipped with an AP. For details, see "Connecting to an Access Point (AP)" on page 44.



### What is an Access Point (AP)?

An AP is a network device that bridges wired and wireless LANs, and corresponds to a wireless hub in a wired network. You can connect multiple wireless LAN installed computers to an AP.

## 2) Computer-to-computer (ad hoc)

This is also called a peer-to-peer network.


In computer-to-computer wireless networks, you can wirelessly connect 2 or more computers that have wireless LAN modules. For details, see "Connecting to computer-to-computer networks (peer-to-peer or ad hoc)" on page 45.

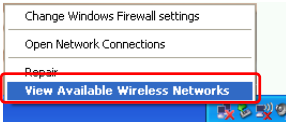
# Connecting to an Access Point (AP)

This section describes how to connect to an AP. You can use the network when you are connected to an AP.



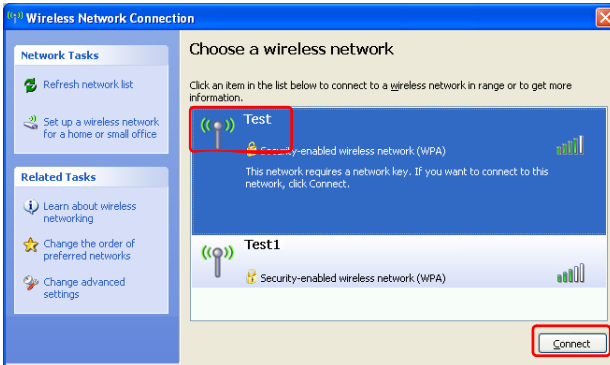
For more detailed information such as the network key (encryption key), ask your network administrator.

- 1 Right-click (press and hold the Stylus Pen for more than 3 seconds) on the **Wireless Network Connections** (  ) icon on the taskbar, and select **View Available Wireless Networks**.



- 2 Select an AP (E.g. Test) to connect to and click **Connect**.

If there is a configured network key for the AP to connect to, the Enter Network Key window appears. Enter the **Network Key** in the window and then click the **Connect** button.




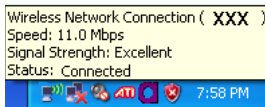
When a network key is not defined for a selected AP, click on Link to display the warning message box. Then click Connect again in the box.

Now when **Connected** in AP is displayed, and you can access the network.



## Checking the connection status

Move the mouse pointer over the Wireless Network Connection (  ) icon on the taskbar, and the connection status is displayed.



## Connecting to computer-to-computer networks (peer-to-peer or ad hoc)

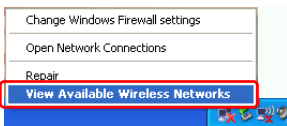
In computer-to-computer wireless networks, you can wirelessly connect 2 or more computers that have wireless LAN modules. Using this method, a computer that is not connected to the Internet can share the Internet by accessing another computer connected to the Internet. (Refer to "Sharing Internet Access" on page 53.)

You can connect by completing the following steps:

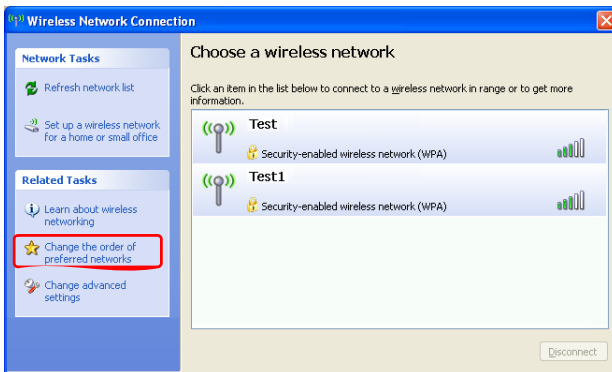
- **Step 1.** Set up a computer-to-computer network on a computer.
- **Step 2.** Connect to the configured computer from other computers.

### Step 1. Setting up a computer-to-computer network

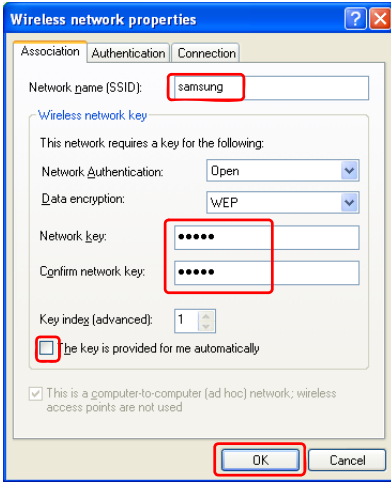
- 1** Right-click on the **Wireless Network Connection** (📶) icon on the taskbar, and select **View Available Wireless Networks**.



- 2** Click **Change the order of Preferred Networks**.



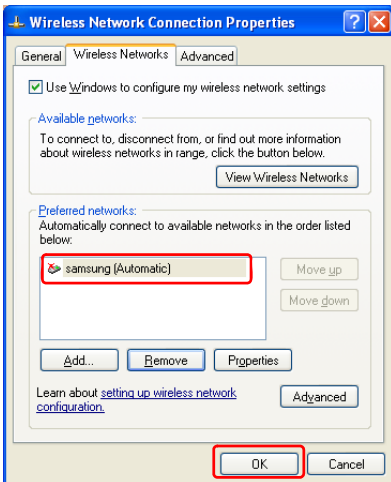
- 3** On the **Wireless Network** tab, click **Advanced**.
- 4** Clear 'Automatically connect to non-default network' check box, if it is selected. Select 'Computer-to-computer (ad hoc) networks only', and click **Close**.
- 5** In the **Wireless Networks** tab, click **Add**.
- 6** Enter the network name (e.g. samsung), and unselect 'The key is provided for me automatically'. Enter the encryption key in the Network key field, and click **OK**.



To prevent a network connection from an unauthorized user, it would be better to configure a network key (encryption key). A network key consists of 5 ~ 13 alphanumeric characters (e.g. magic), or of 10 ~ 26 hexadecimal numbers (a hexadecimal number is represented by numbers '0' to '9' or letters 'a' to 'f').


7

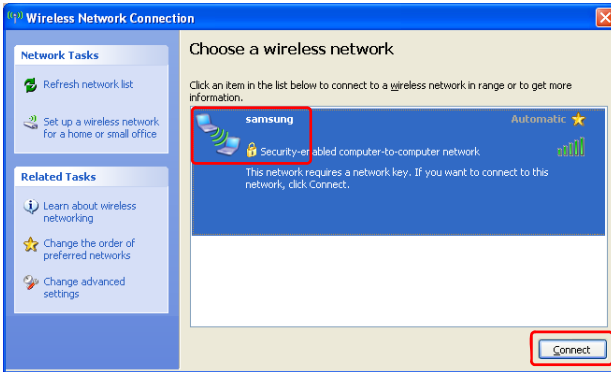
Check that the configured network name (e.g. samsung) is in the 'Preferred networks' item, and click **OK**.



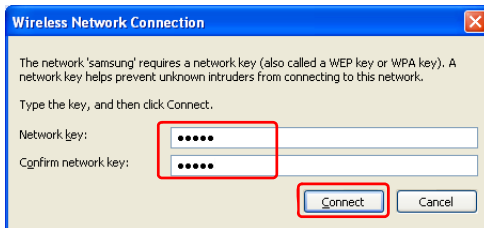
Now your wireless network setup has been completed.

## Step 2. Connecting to the configured computer

- 1 Right-click on the **Wireless Network Connection** (  ) icon on the taskbar, and select **View Available Wireless Networks**.
- 2 Select the wireless network name (e.g. samsung) specified in "Connecting to computer-to-computer networks (peer-to-peer or ad hoc)" on page 45, and click **Connect**.



- 3 Enter a cryptographic key in the network key box and click **Connect**.




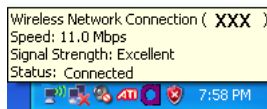
If the network key is not configured in "Connecting to computer-to-computer networks (peer-to-peer or ad hoc)" on page 45, just click **Connect**, without any keystrokes.

When connected to the wireless network, the system displays **Connected** in the selected network of the Network Connection window.



### Checking the connection status

Move the mouse pointer over the Wireless Network Connection (  ) icon on the taskbar, and the connection status is displayed.




# Wireless Network Setup Using the Wireless LAN Setup Program

The procedures to connect to an access point using a wireless LAN configuration program are described below. Since the wireless LAN configuration program is included on the **System Software Media**, the user has to install the program.



## Before You Start!

To use the system software media, the external USB ODD must be connected to the computer. The following descriptions presuppose that the external ODD is connected.

- 1** Insert the **System Software Media** into the CD drive and install the wireless LAN configuration program (ACU: Atheros Client Utility).  
Select **System Software Media > User Installation > Wireless LAN Driver ReadMe**, click **ReadMe** and install the program according to the instructions.
- 2** Right-click( press and hold the Stylus Pen for more than 3 seconds) on the **wireless LAN configuration program** () on the taskbar and select **Open Atheros Client Utility**.
- 3** Alternatively, click **Start > All Programs > Atheros Client Utility > Atheros Client Utility**.
- 4** In the Profile Management tab, click **Scan** to search for available wireless networks.
- 5** Select the name of an access point (AP) to connect to from the network name (SSID) and then click **Activate**.
- 6** Enter a profile name to be used for the connection and select the security settings of the AP to be connected to in the **Security** tab.



The network authentication, encryption type and password of an access point are configured through the access point management program. For the security information, check the security settings of an access point or ask your wireless network administrator.



## Refer to the following when setting a WEP key.

- **Data encryption (WEP):** The IEEE 802.11 WEP (Wired Equivalent Privacy) standard defines two levels of encryption, a 64-bit key (this is sometimes represented by 40bits) and a 128-bit key.  
When connecting to an Atheros access point, you can use the 152-bit key (32 hexadecimal digits or 16 ASCII characters).
- **Key index:** Select the current encryption key index used by the access point from between 1 to 4.
- **Using an encryption key:** Enter 5 (for 64-bit) or 13 (for 128-bit) alphanumeric characters (represented by 0-9, a-z, or A-Z).

- 7** Click **OK** and then **OK** again in the Profile Management window.

If the profile is created, the profile appears in the list in the Profile Management tab and the connection is established using the profile.



# Using Samsung Network Manager

Samsung Network Manager is a program that has been developed to enable users to use the network easily.

Samsung Network Manager provides the following features.

- **You can easily set up the network and printer settings.**
- **You can immediately use the network without defining new network settings again after moving locations.**

By setting the network settings (IP address, printer settings, etc.) for each location, you can immediately access the network without following network setting procedures each time regardless of your location.

- **You can easily share Internet Access.**

You can share your Internet connection by setting up a computer with 2 LAN interfaces (wired and wireless, or 2 wired LAN) as the sharing server. Then, you can access the Internet on a sharing client by connecting to the sharing server.

- **You can diagnose the network status.**

You can diagnose the network status when the network is not properly connected.

## Using the Network

This section describes the procedures to connect to the Internet by setting up a network. The setting up procedures include the procedures to add a printer to the network.


- 1** To use a wired LAN, connect the LAN cable to the LAN port and turn the wired LAN on, if it is turned off.

Press the **Menu** button and click the **Wired LAN ON** item to turn it on.

To use a wireless LAN, you have to turn it on, if it is turned off.

Press the **Menu** button and click the **Wireless LAN ON** item to turn it on. When the wireless LAN is turned on, the **Wireless LAN LED** (  ) lights up.

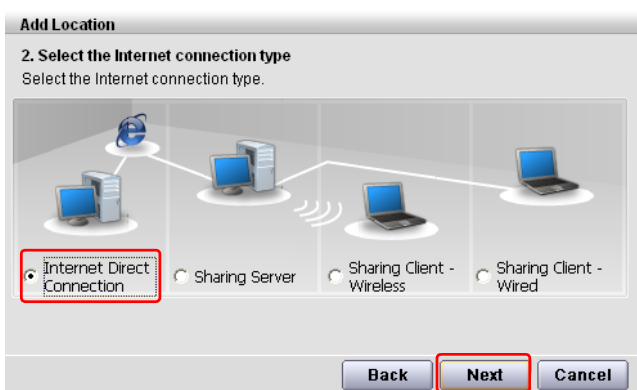
- 2** Run Samsung Network Manager.

Select **Start > All Programs > Samsung > Samsung Network Manager > Samsung Network Manager** or double click the **Samsung Network Manager** (  ) icon on the Desktop.

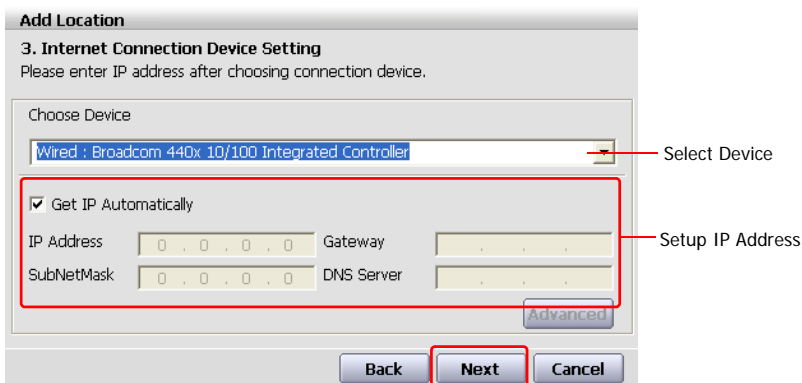
- 3** Click the **Add** button.

- 4** Select a network location icon and enter the name of the location (e.g. Home). Click the **Next** button.

- 5 Select **Internet direct connection** and click the **Next** button.



- 6 Select the LAN device, setup the IP address and click the **Next** button.



### Select Device

Select a device to be connected to the Internet. Select either Wired LAN or Wireless LAN.

### Setting up the IP Address

To allocate an IP address automatically (DHCP), select **Get IP Automatically**.

To use a static IP address, unselect **Get IP Automatically** and enter an IP address. For IP address information, ask your network administrator.

- 7 When the Printer Setting window appears, click **Finish**.

To add a printer, click **Add Printer**. The Add Printer Wizard appears. Set up the printer according to the instructions displayed on the screen.

When the printer has been added, click the **Show printer** button, select the newly added printer and then click the **Finish** button.

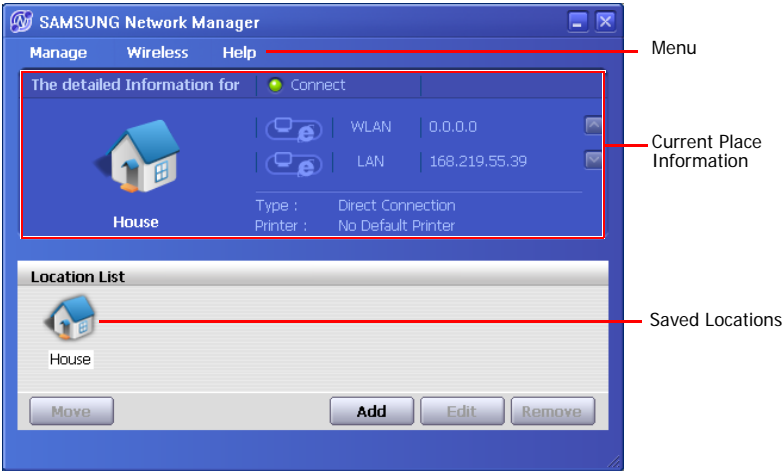


To not add a printer, select **No Default Printer** and then click the **Finish** button.

When the network setting is complete, the **'Do you want to move to newly added location now?'** message appears. If you select **'Yes'**, the network settings for the added location are applied.


When the network settings for the added location are applied, the added place and the corresponding network connection information is displayed in **The detailed Information for window**.

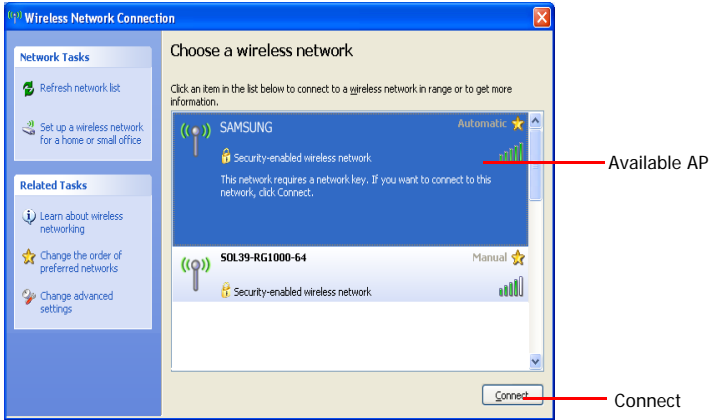
When the network setting is complete, an icon for the added location is created within the Saved Locations window. Now you can use the Internet or add a new network location.



### Wireless LAN AP Connection Procedures

To use a wireless LAN, first connect to a wireless LAN AP and then you can access the network even when moving location. Or moving location and then you can access the network even when connecting to a wireless LAN AP

- 1 Right-click over the **Wireless Network Connection** (  ) icon on the Taskbar and click **View Available Wireless Networks**.
- 2 Click **Search AP** from the **Wireless** menu to search for wireless LAN APs. Select an available wireless network (e.g. SAMSUNG) and click the **Connect** button. For information on available wireless LAN APs, ask your network administrator.



- ③ The network key (security key) input window appears.
  - If a network key has been set for the wireless LAN AP, enter the network key and click the **Connect** button. For the network key information, ask your network administrator.
  - If no network key has been set for the wireless LAN AP, click the **Connect** button without entering the network key.
- ④ When the computer is connected to the wireless LAN AP, the **Connected** message will appear on the Wireless Network icon in the Taskbar.

## Using the network after moving location

By setting the network settings (IP address, printer setting, etc.) for each location, you can immediately access the network without performing the network setting procedures regardless of your location.

- 1 Run **Samsung Network Manager** when connected to the Internet.
- 2 Select an icon that represents the corresponding location from the Saved Locations window and then click **Move**.
- 3 When the network settings of the selected location are applied, the new location and the network connection information are displayed in **The detailed Information for window**.

# Sharing Internet Access

This section describes the procedures to share Internet Access.

To share Internet Access, you first have to set a sharing server and a sharing client. When the setup is complete, you can access the Internet from the sharing client by connecting to the sharing server.



**Sharing Server** : A computer with a direct connection to the internet and a local network connection.

**Sharing Client** : A computer that uses the Internet by connecting to a sharing server without itself having a direct connection to the Internet.

You can connect a sharing server and a sharing client as follows. (See Figure 5 on page (p50))

			Sharing Client
	External Internet Device	Client Device	
<b>Connection 1</b>	Wired LAN	Wireless LAN	Wireless LAN
<b>Connection 2</b>	Wireless LAN	Wired LAN	Wired LAN
<b>Connection 3</b>	Wired LAN	Wired LAN	Wired LAN

**For Connection 1:** To use a wired LAN, connect the LAN cable to the LAN port and turn the wired LAN on, if it is turned off.

Press the **Menu** button and click the **Wired LAN ON** item to turn it on.

To use a wireless LAN, you have to turn it on, if it is turned off.

Press the **Menu** button and click the **Wireless LAN ON** item to turn it on. When the wireless LAN is turned on, the **Wireless LAN LED** ( ) lights up.

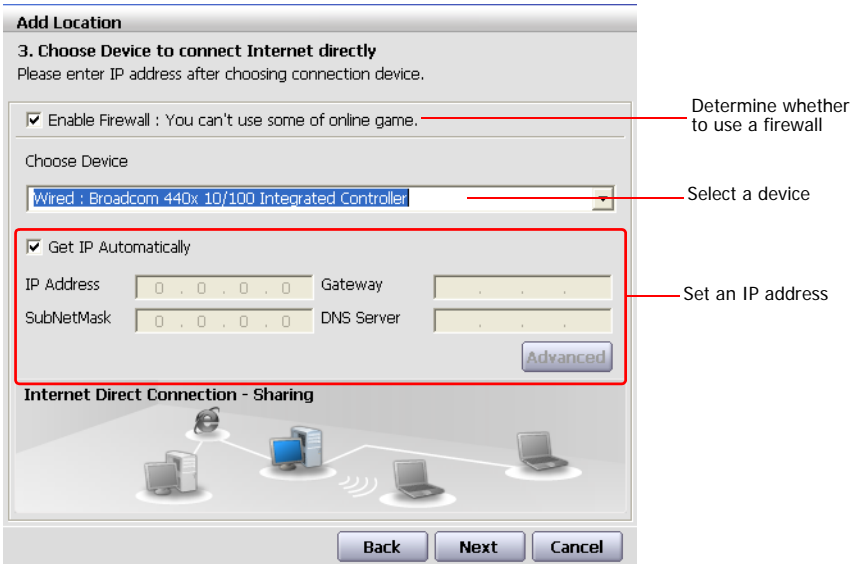
**For Connection 2,3:** To connect a sharing server and a sharing client using a wired LAN, connect the computers with a crossover LAN cable or network hub first.

For Connection 3, you have to connect a LAN card in advance.

As an example, Internet sharing procedures for [**Connection 1**], which connect the sharing server and the Internet through a wired LAN and connect the sharing server and the sharing client through a wireless LAN, are described below.

## Setting Up a Sharing Server

- 1 Run **Samsung Network Manager** on the computer to be used as the sharing server.
- 2 Click the **Add** button.
- 3 Select a network location icon and enter the name of the location (e.g. Home). Click the **Next** button.
- 4 Select **Internet direct Connection for sharing** and click the **Next** button.
- 5 Set up the network device to be connected to the external Internet. Determine whether to use a firewall and select a network device to be connected to the external Internet (e.g. Wired LAN). Set the IP address and then click the **Next** button.



- To protect against external intrusion attempts, using a firewall is recommended.
- For more information on selecting a device and setting the IP address, refer to the description of item 6 of "Setting Up a Network" on page 47.

**6** Select a network device to connect to the sharing client (e.g. wireless LAN) and click the **Next** button.



**To Share Internet Access through a Wireless LAN**

- In the Select Device field, select **Wireless**.
- In the **Wireless Connection Name** (e.g. Samsung) field, enter the network name.
- To use the network key (security key), select the "**Use Password ,,,**" option and enter a network key. Remember the network key because you have to re-enter the key on the sharing client to connect to the sharing server.

**7** The setup information is displayed. Confirm the settings and click the **Next** button.

**8** When the Printer Setting window appears, click **Finish**.

For the printer setup procedures, refer to the description of item 7 of "Setting Up a Network" on page 47

When the Shared Server setting is completed, set up the shared client.

# Setting Up the Sharing Client

---

- 1** Run **Samsung Network Manager** on the computer to be used as a sharing client.
- 2** Click the **Add** button.
- 3** Select a network location icon and enter the name of the location. Click the **Next** button.
- 4** Select **Internet Sharing** and click the **Next** button.



- To connect through a wireless LAN, select **Internet Sharing - Wireless**.
- To connect through a wired LAN, select **Internet Sharing - Wired**.

- 5** Confirm the network device to be connected to the server and click the **Next** button.



- To connect through a wireless LAN, enter the **wireless connection name** (e.g. Samsung) you entered in the sharing server. If you have set a network key (security key) for the sharing server, enter the network key.

- 6** The setup information appears. Confirm the information and click the **Next** button.

- 7** When the Printer Setting window appears, click **Finish**.

For the printer setup procedures, refer to the description of item 7 of "Setting Up a Network" on page 47

When the settings are completed, you can use the Internet on the shared client.



- To access the Internet from the sharing client, the sharing server has to be on.
- To use the Internet on the sharing client, select a sharing client icon from the **Location List** window and then click the **Move** button.
- If the connection is broken while using the Internet on the sharing client, click the **Ap Active** from the **Wireless** menu to reestablish the connection.

# Network Status Diagnosis

You can diagnose the network status when the network is not properly connected.

- 1 Run **Samsung Network Manager**.
- 2 Select **Auto Diagnosis** from the **Manage** menu.
- 3 The Network Connections figure window appears. Click the **Start** button to start the network diagnosis.
- 4 When the diagnosis is complete, out of order devices are marked by the exclamation mark icon. For detailed device status, read the description in the lower part of the window.  
Reconnect and set up the device according to the diagnosis result.





# Using Bluetooth Devices (Optional)

Bluetooth is a wireless communication technology that allows access to devices nearby such as a computer, mobile phone, printer, keyboard or mouse without a cable connection. Bluetooth enables file transmissions, Internet access, a private area network function, and access to a keyboard, mouse and printer between devices supporting the Bluetooth function without a cable connection.



## Before You Start!

- The Bluetooth function is only available between devices supporting Bluetooth (computers, mobile phones, PDAs, printers, etc.), and the function may be restricted depending on the device profile.
- The Bluetooth function is optional and may not be supported depending on your model.

## Bluetooth Functions

---

### • File Transmission (📁)

You can exchange files between 2 Bluetooth devices. You can exchange files with other computers, mobile phones, PDAs, etc.

### • Network Access (💻)

You can connect to another computer with the Bluetooth function as you access a wireless LAN in Ad-Hoc mode or connect to the Internet through an AP or Internet Connecting Sharing Server.

### • Network Access through a Phone Connection (📞)

You can connect to the Internet through a Bluetooth mobile phone.

### • Data Sync (Synchronization) (🔄)

You can synchronize the PIMS data (Outlook E-mail address data) with mobile phones, PDAs, notebook computers, etc. supporting Bluetooth.

### • Electronic Business Card (Vcard) Exchange (📇)

You can exchange electronic business cards with mobile phones, PDAs, notebook computers, etc. supporting Bluetooth.

### • Sound Output (🔊)

You can listen to audio from the computer through another Bluetooth device or listen to audio of another Bluetooth device through the computer.

### • HID Connections (🖱️)


You can connect a keyboard, mouse, joystick, etc. supporting Bluetooth.

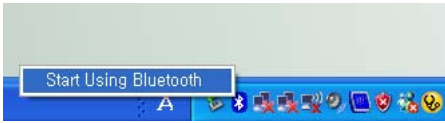


For more information about using the Bluetooth function, refer to the online help of the Bluetooth Device.

## Bluetooth Software Setup

Bluetooth software is installed on computers supporting Bluetooth. For first time use, set up the Bluetooth software as follows.

- 1 Right-click (press and hold the Stylus Pen for more than 3 seconds) on the **Bluetooth icon** (  ) at the bottom right of the taskbar, and select **Start Using Bluetooth** from the pop-up menu.



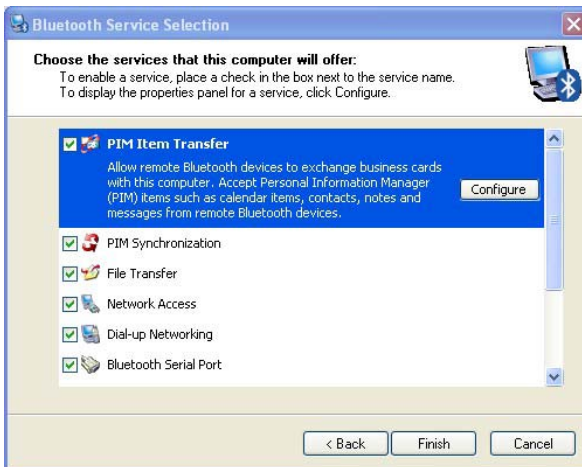
- 2 Click the **Next** button to start setting up.



In the setting up steps, enter a device name to be displayed in the Bluetooth Manager program. Enter a **Name** in the Computer Name field and select **Laptop** for the Computer Type field.



Also, a step appears for selecting the services to be provided by your Bluetooth device for other Bluetooth devices. At this point, the program automatically detects available services and displays them as selected. It is recommended not to change the default selection.



If you change the service settings, the driver necessary for the additionally selected services are installed.

At this point, a warning message may appear informing you that there is no Microsoft logo. Since it does not affect the operation, continue the installation.

- 3 If the driver installation is complete, the next step proceeds which searches for nearby Bluetooth devices. Since you do not have to search while setting up, click the **Skip** button and finish the settings.



- 4 When the settings are complete, the **Bluetooth** icon menu of the notification area changes as shown in the figure.



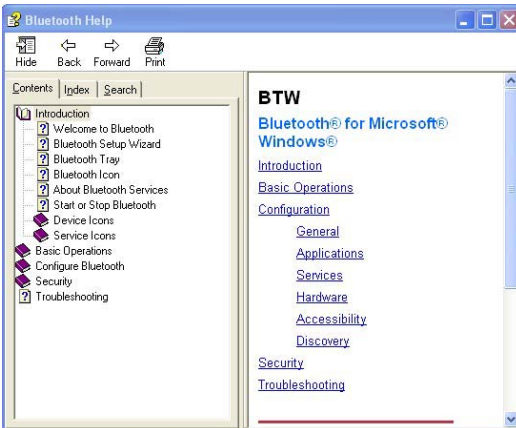
# Using Bluetooth

Describes how to exchange files between computers supporting Bluetooth and how to use other Bluetooth devices.

## Bluetooth Help

Bluetooth Help provides detailed procedures on using Bluetooth functions.

Double-click on **My Bluetooth Settings** on the **Desktop** and click **Help > Bluetooth Help** from the top menu.

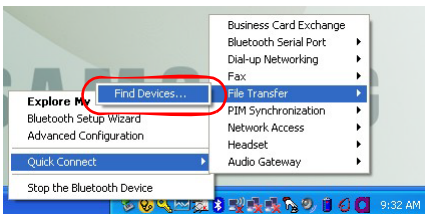


Select Start > Help and Support > Networking and the Web > Networking > Wireless networking > Bluetooth devices (wireless) to view Windows Help.

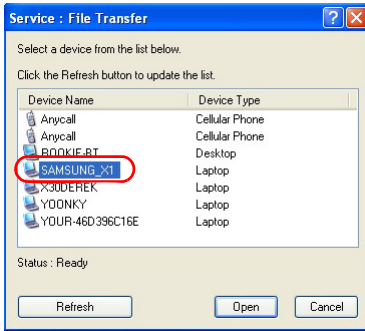
## Exchanging Files between Bluetooth computers

The procedures to exchange files and folders between Bluetooth computers are described below.

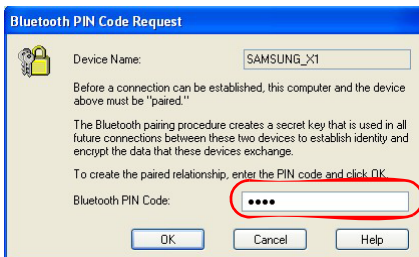
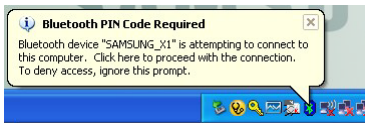
- 1 On the computer which is sending a file (hereafter Computer A), right-click (press and hold the Stylus Pen for more than 3 seconds) the **Bluetooth icon** (📶) on the taskbar and select **Quick Connection > File Transmission > Search for Device**.



- 2 In the Select Device window, click on a computer to be connected (hereafter Computer B).

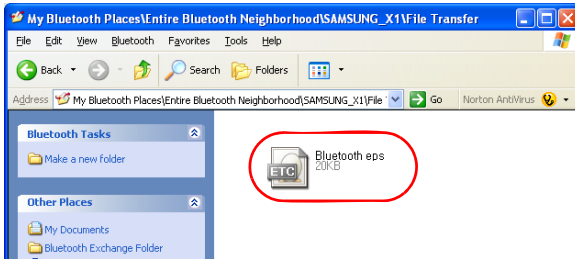


- 3** If the **Bluetooth PIN code requested** notification window appears on the bottom right taskbar, click on the window, enter the **Bluetooth PIN** code and click the **OK** button.



The **Bluetooth PIN Code** is a password used for the connection between two Bluetooth devices, the user just enter the same PIN Code (E.g. same numbers) on both Bluetooth devices to make a connection.

- 4** After a short while, the **Bluetooth PIN Code required** dialog box appears on Computer B, enter the code that you have entered in Step 3 above.
- 5** If the FTP File Access Privilege Request window appears on Computer B, click on the window. If the Select Access Permission window appears, click the **OK** button.
- 6** The file transmission window appears on computer A. Drag files or folders to send onto the window, and the files or folders are automatically transmitted.



7 If the file transmission is complete, close the File Transmission window.

The received files are saved in the C:\Documents and Settings\[user name]\My Documents\Bluetooth Exchange folder.

## Connecting Keyboard, Mouse, Joystick and Headset devices

The procedures to use Bluetooth HID devices (keyboard, mouse, joystick, etc.) or a headset, etc. on the computer are described below.



The Bluetooth PIN Code is a password used for the connection between two Bluetooth devices, the user just enter the same PIN Code on both Bluetooth devices to make a connection.

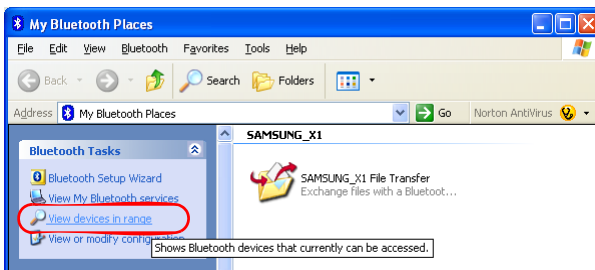
1 Turn on the Bluetooth function on the device to connect to (mouse, keyboard, joystick or headset).

Some devices have a button to turn on the Bluetooth function, so refer to the corresponding device manual.

2 Double-click on the **My Bluetooth Settings icon** (  ) on the Desktop.

3 If the **My Bluetooth Settings** window appears, click on **View Devices within Coverage**.

If the device to connect to appears, click on the device. (E.g. mouse)



If the device does not appear, click the **View Devices within Coverage**. If the device has not appeared yet, since this menu changes to **Search Devices within Coverage**, click the **Search Devices within Coverage** to show the device.


- 4 If the **Bluetooth PIN Code** input window appears, enter a PIN code referring to the manual of the corresponding device. The PIN code for an HID device is generally printed in the manual of the corresponding device.
- 5 If you enter the PIN code, you can immediately use the device.



A Bluetooth keyboard and mouse work only in Windows. They will not work in MS-DOS mode or in Hibernation mode.

## Stopping a Bluetooth device

---

Right-click (press and hold the Stylus Pen for more than 3 seconds) the **Bluetooth icon**  on the taskbar and select **Stop the Bluetooth Device**.



To use a Bluetooth device after stopping it, select **Start Bluetooth device** as above.

## Use Instructions

---

- Bluetooth devices must be within a 3m distance.
- For a better communications environment, use the devices in an open space where no wall or obstacle exists.
- For a telephone connection, data synchronization, electronics business card exchange, fax transmission/reception, sound related functions, and serial port function, you can connect with only one Bluetooth device.
- Using the network connection or file transmission function, multiple Bluetooth devices can be connected. However, since connecting with multiple devices may slow down the data rate or make the connection unstable, connecting with one device at a time is recommended.
- The Bluetooth function of a Bluetooth PDA, mobile phone, mouse or keyboard may be turned off. To use them in connection with a Samsung computer supporting Bluetooth, you must check if the Bluetooth function of the device to connect to is turned on. For the procedures on turning on the Bluetooth function of a device, refer to the manual of the device.
- The services provided by Bluetooth devices may vary depending on their capability. For the services provided by Bluetooth devices, refer to the manual of the device.

## Chapter 5. Using Applications

<b>Introducing Programs</b>	<b>65</b>
<b>Using Samsung Update Plus</b>	<b>67</b>
<b>Program Launcher</b>	<b>69</b>
Program Launcher Screen Layout	69
Using Program Launcher	70
<b>Using AVStation premium</b>	<b>71</b>
Start and Screen Layout	71
MUSIC Station	72
PHOTO Station	74
MOVIE Station	78
<b>Using AVStation NOW / AVStation Viewer</b>	<b>82</b>
Start / Exit AVStation NOW	82
Start / Exit AVStation Viewer	83
Screen Layout	84
MUSIC Station	85
MOVIE Station	87
<b>CyberLink PowerDVD</b>	<b>89</b>
<b>Voice Recorder</b>	<b>91</b>
Recording	91



# Introducing Programs

Using software supplied with the Samsung computer, you can easily use difficult functions and troubleshoot problems by yourself. Learn how to use the programs yourself. For detailed information, refer to the help of the corresponding software.



## Before You Start!

Every software program may not be provided or the version may differ depending on your computer model.



## Multi Media Functions

---

- **Program Launcher**

The Program Launcher categorizes frequently used programs, folders, web sites so that you can easily manage and access them. This program is designed for the small LCD size so that you can easily use this program with the Stylus Pen or your fingers. (Page 75)

- **AVStation premium** ()

AVStation premium is an integrated multimedia program that enables users to enjoy better quality of music, photographs, video, movies, etc. all with a single program. (Page 77)

- **AVStation Viewer**

AVStation Viewer is a program that enables you to easily run AVStation premium in full screen. (Page 87)

- **AVStation NOW**

AVStation NOW is an integrated multimedia program that enables users to enjoy photographs, video, DVDs, music, etc. all with a single program and without booting Windows even when the computer is turned off. (Page 87)

- **CyberLink PowerDVD** (  )

CyberLink PowerDVD is a DVD player program supplied with the external USB ODD. To use this program, you have to install this program manually. (Page 95)

- **Voice Recorder** (  )

Voice Recorder is a program which enables users to make and play recordings. (Page 104)

## Management Functions

---

- **Samsung Update Plus** (  )

Samsung Update Plus is software that examines and updates the Samsung software and drivers installed on your Samsung computer to the most recent versions. (Page 73)

- **Samsung Network Manager** (  )

Samsung Network Manager is a program that has been developed to enable users to configure the network and internet sharing settings easily. You can configure the network settings by the location and you can configure the Internet sharing settings and perform a network diagnosis. (Page 56)

- **Samsung Battery Manager** (  )

Samsung Battery Manager is a power management program that provides easy-to-use power management and power saving settings so that the battery usage time can be extended. (Page 114)

- **Samsung Display Manager**

Samsung Display Manager is a program that displays the setting status of some buttons on the screen.



Example) The icon that appears when pressing the **Menu button** and clicking **Brightness Up**.

## Troubleshooting Functions

---

- **Magic Doctor** (  )

Magic Doctor is troubleshooting software provided by Samsung Computer. A user can diagnose system problems via one-click or by selecting diagnostic items. (Page 118)

- **Norton AntiVirus** (  )

Norton AntiVirus is a program that examines a computer and deals with found viruses. Since viruses may damage the files and data on your computer, it is recommended to examine your system frequently with the Norton AntiVirus program. (Page 120)

# Using Samsung Update Plus

Samsung Update Plus is software that examines and updates Samsung software and drivers installed on your Samsung computer to the latest version. To use Samsung Update Plus, your computer has to be connected to the Internet.

## To Update Samsung Software and Drivers

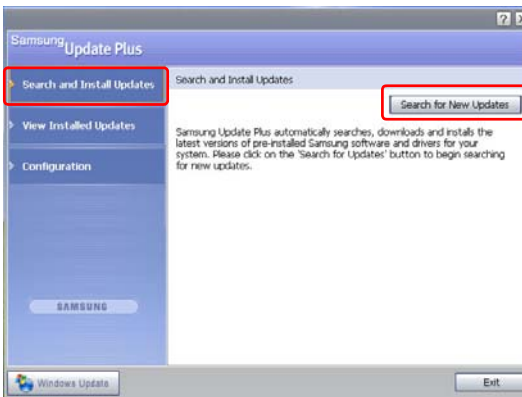
---

- 1 Select **Start > All Programs > Samsung > Samsung Update Plus > Samsung Update Plus**.



If this is the first time you are running the program, a window will appear asking you if you agree to the agreement in the window.  
Click Agree to use this software.

- 2 Click **Search for and Install Updates** and click the **Search for New Updates** button.



- 3 If there are available software or driver updates for your computer, the available updates will be listed. Select the required updates from the list and click **Install Update** to start the update.

(The update list on the screen may differ depending on the computer model.)



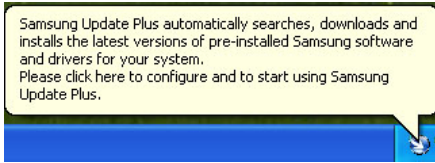
### Updates that must be installed separately.

If you select **Install** as an update item that must be installed separately, a message appears informing you of this. Follow the instruction message to correctly install it.



### Automatic update items display

By default, your computer is configured to automatically search for updates. If there is a new update available, this is notified in the notification area. Click the balloon help icon in the notification area. Here you will be able to find the latest available updates.



To change the automatic update settings, click the **Configuration** button in Figure 2 and change the settings.



Samsung Update Plus does not provide updates for additionally installed software and device drivers.

# Program Launcher

The Program Launcher categorizes frequently used programs, folders, web sites so that you can easily manage and access them.  
This program is designed for the small LCD size so that you can easily use this program with the Stylus Pen or your fingers.

## Program Launcher Screen Layout

When turning the computer on, the Program Launcher is launched.

If it does not appear automatically, click **Start > All Programs > Microsoft Touch Pack for Tablet PC > Program Launcher**.



# Using Program Launcher

For example, the procedures to launch the **Calculator** on the Program Launcher are described below.

- 1 Run the **Program Launcher**.
- 2 Select **More Programs > Calculator**. The Calculator program is launched.



- **For more detailed usage**  
For more detailed usage, click **Program Launcher Help** from the **Tools** category.
- **Program Launcher User Setting functions**  
You can add a category and add or delete a shortcut icon.  
Click on **Customize Launcher** from the **Tools** category to change the settings.