

Program Launcher (Optional)

The Program Launcher categorizes frequently used programs, folders, and websites so that you can easily manage and access them. This program is designed for the small LCD size so that you can easily use this program with the Stylus Pen or your fingers.



It is optional and is not supplied with some models.

The terms and the screen figures in the manual may differ from actual ones.

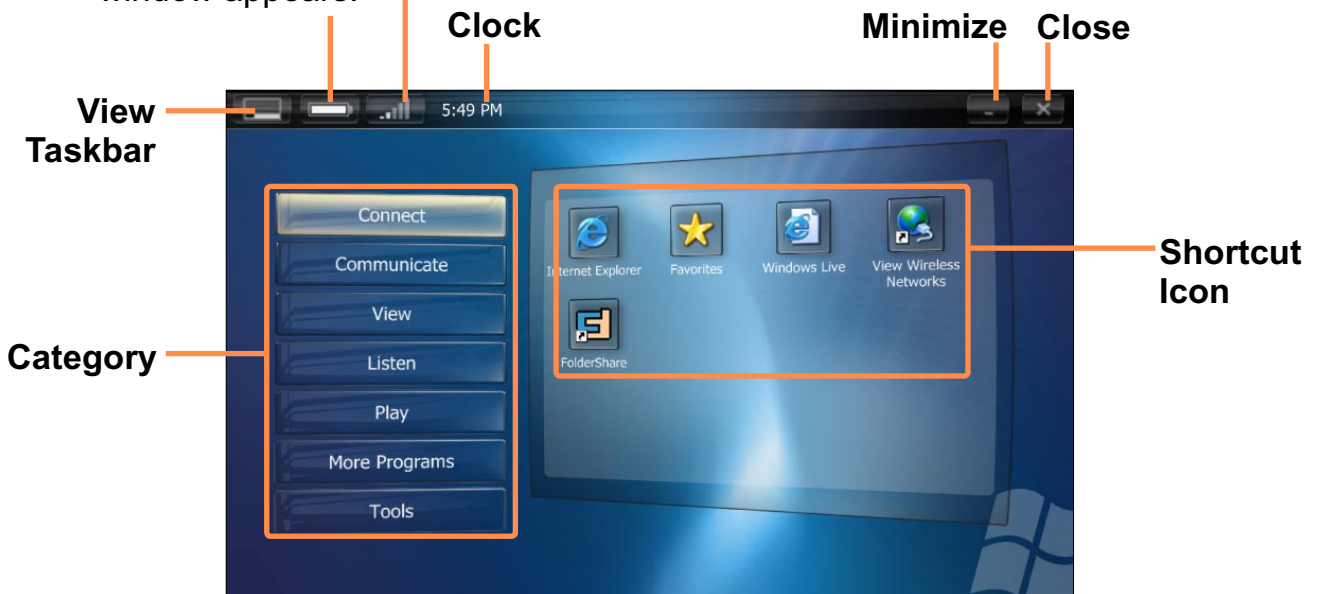
Program Launcher Screen Layout

To launch the Program Launcher, click **Start > All Programs > Microsoft Touch Pack for Tablet PC > Program Launcher**.

Battery Charge Status Wireless LAN Status

When clicking the icon, the Power Option Properties window appears.

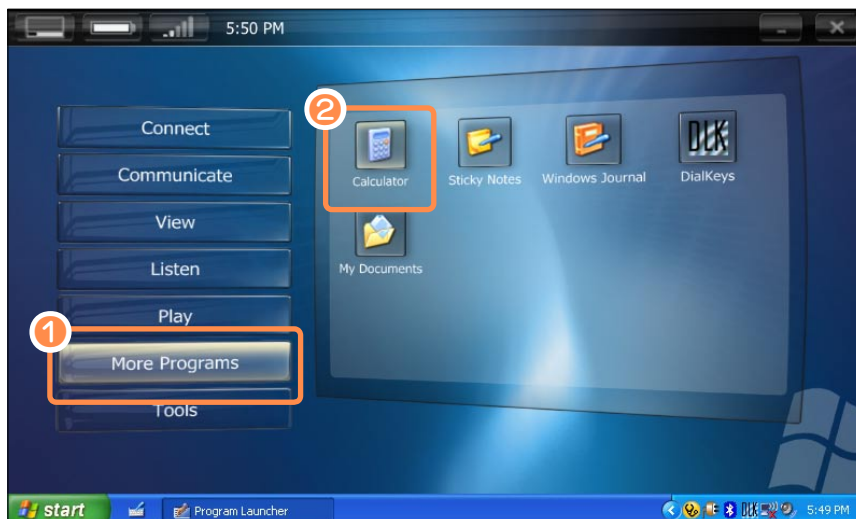
When clicking the icon, the Network Connections window appears.



Using Program Launcher

As an example, the procedures to launch the **Calculator** on the Program Launcher are described below.

- 1 Run the **Program Launcher**.
- 2 Select **More Programs > Calculator**. The Calculator program is launched.



■ For more detailed usage

For more detailed usage, click Program Launcher Help from the Tools category.

■ Program Launcher User Setting functions

You can add a category and add or delete a shortcut icon.

Click on Customize Launcher from the Tools category to change the settings.

CyberLink PowerDVD (Optional)

CyberLink PowerDVD is a DVD player program.



The CyberLink PowerDVD program can only be used when you have purchased an CD/DVD drive, and you have installed the program. It is optional and is not supplied with some models.

- 1 Insert a DVD title into the CD/DVD drive.
- 2 Select **Play DVD Video Using PowerDVD** and click the **OK** button.
After a moment, the DVD title will play.



- 3 If the DVD title is not automatically played, click **Start > All Programs > CyberLink PowerDVD > CyberLink PowerDVD**.
- 4 Then click the Play icon in the control panel of CyberLink PowerDVD to play the DVD title.



Play

Settings



■ Detailed Usage

For more detailed usage, click **Start > All Programs > CyberLink PowerDVD > PowerDVD Help**.

■ DVD Region Code

A DVD title has a region code according to the international specifications so that it can be played only in that specific region.

DVD titles with a region code will only play on DVD drives and program for playing with the same region code.

A DVD drive is sold with an empty region code and the region code is set when the user inserts a DVD title into the drive for the first time. Whenever a DVD title is inserted with a region code different from that of the DVD drive, the region code of the DVD drive is automatically changed to the region code of the DVD title.

However, changing the region code of a DVD drive is limited to 5 changes. After that, the region code is permanently fixed to the last region code. If you need to change the region code after changing the code 5 times, contact a service center. Although a service center can help you in this case, you will be charged a service fee.

Samsung Update Plus (Optional)

Samsung Update Plus is software that examines and updates the Samsung software and drivers installed on your Samsung computer to the latest version.



- To search for updates and update your computer using Samsung Update Plus, your computer must be connected to the Internet.
- The update search result may differ depending on your computer model.



Samsung Update Plus does not provide updates for applications installed after purchasing the computer.

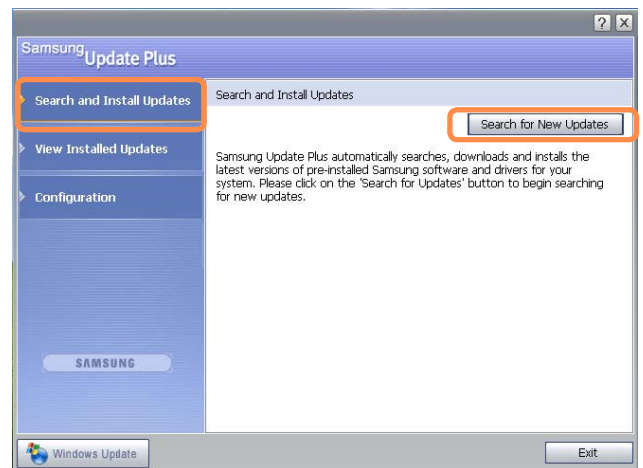
To update the software and drivers

- 1 Click **Start > All Programs > Samsung > Samsung Update Plus > Samsung Update Plus**.

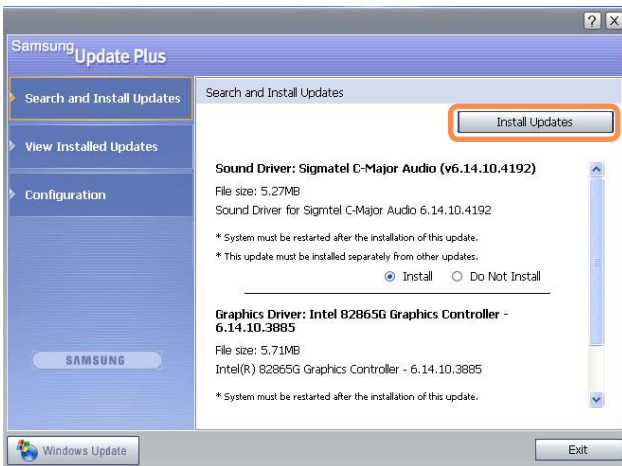


If this is the first time you are running the program, a window will appear asking you if you agree to the agreement in the window. Click Agree to use this software.

- 2 Click **Search for and Install Updates** and click the **Search for New Updates** button.



- 3 If there are available software or driver updates for your computer, the available updates will be listed. Select the required updates from the list and click on **Install Updates** to start the update.



Automatic update items display

By default, your computer is configured to automatically search for updates. If there is a new update available, this is displayed in the notification area. Click the balloon help icon in the notification area. Here you will be able to find the latest available updates.

Samsung Update Plus automatically searches, downloads and installs the latest versions of pre-installed Samsung software and drivers for your system. Please click here to configure and to start using Samsung Update Plus.



Updates that must be installed separately.

If you select **Install** for an update item that must be installed separately, a message appears informing you of this. Follow the instruction message to correctly install it.

AVStation premium (Optional)

AVStation premium is an integrated multimedia program that enables users to enjoy music, photographs, video, movies, etc. all with a single program.

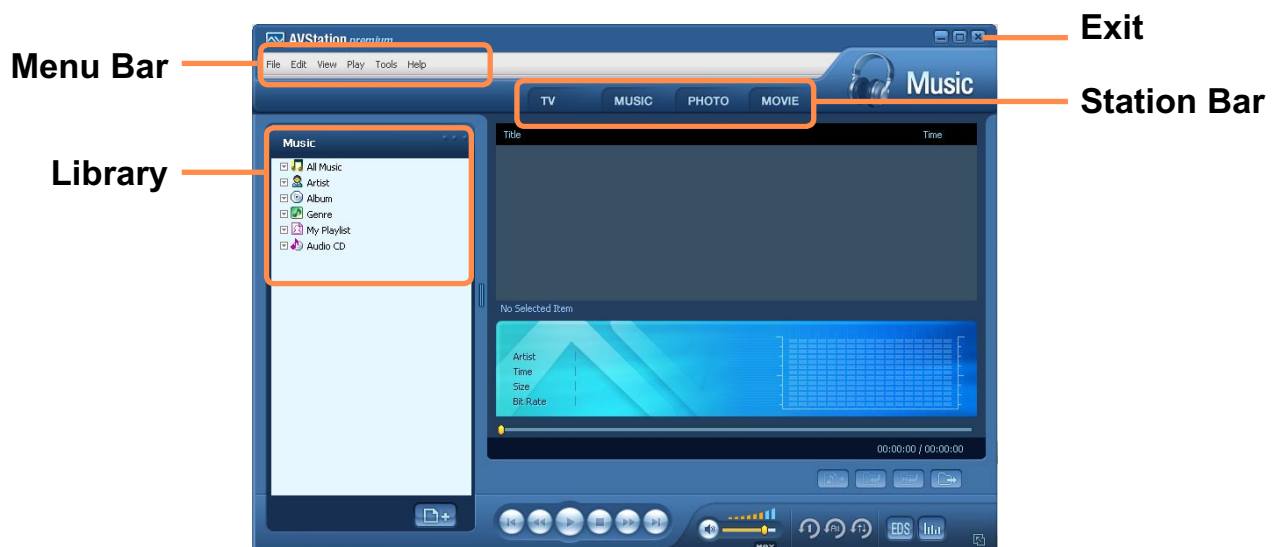


- The AVStation premium program is optional and may not be provided depending on the computer model.
- The screens used in this manual may differ from actual screens according to the program version.
- TV Station is only available for systems supporting a TV function. This computer is not supported.
- To play an audio CD or DVD, you have to connect an external ODD. Use the description below provided that an external ODD is connected.
- For detailed usage, refer to the program help.

Start and Screen Layout

To launch the program, select **Start > All Programs > Samsung > AVStation premium > AVStation premium**.

Alternatively double-click the **AVStation premium** icon () on the Desktop.



MUSIC: You can play a music file or an audio CD.

PHOTO: You can view or edit a photograph (image), and also view the photographs in a SlideShow.

MOVIE: You can play a video (movie) file.

MUSIC Station

Launch AVStation premium and click **MUSIC** on the Station Bar.

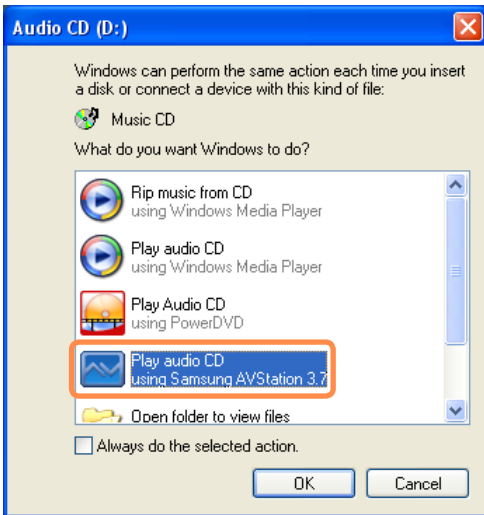


Playing an Audio CD

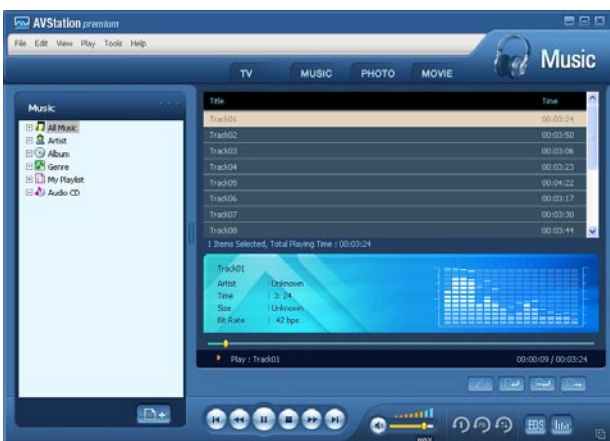
The procedures to play an audio CD are described below.

- 1 Launch AVStation premium and insert an audio CD into a CD drive connected to this computer.

- 2 In the **Audio CD** window, select **Play Audio CD using Samsung AVStation** and click the **OK** button.



- 3 The tracks on the audio CD are displayed in the Playlist and the first track is automatically played.



If an audio CD is already in the CD drive, double-click the **album title** in the **Audio CD** folder of the Library and add the tracks to the Playlist. The tracks added to the Playlist are played.

Playing a Music File

If a music file is registered to the MUSIC Library, you can easily play the music file. For the procedures to register tracks to the Library, refer to [p.129](#).

- 1 Move to **MUSIC Station** and double-click on **All Musics**.
- 2 Double-click a music file. The file is added to the playlist and played.



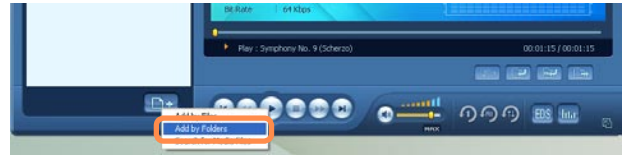


■ Playing a Track not registered to the Library

Click **File > Open**, select a music file to be played and click **Open**. The selected track is registered to the Library and played.

■ Creating My Playlist

My Playlist is a personal album used to collect, manage and play your favorite music files. For the procedures to create My Playlist, refer to the descriptions of MUSIC Station in Help.



- 2 Select a folder which includes music files and click the **OK** button. The music files in the folder are added to the Library.

Adding Music Files to the Library

MUSIC Library is a library of music files used by MUSIC Station. The procedures to add music files saved on the computer to the Library are described below.

You can add files, folders or search and add files. As an example, the procedures to add a folder are described below.



The tracks used in AVStation are automatically added to the Library.


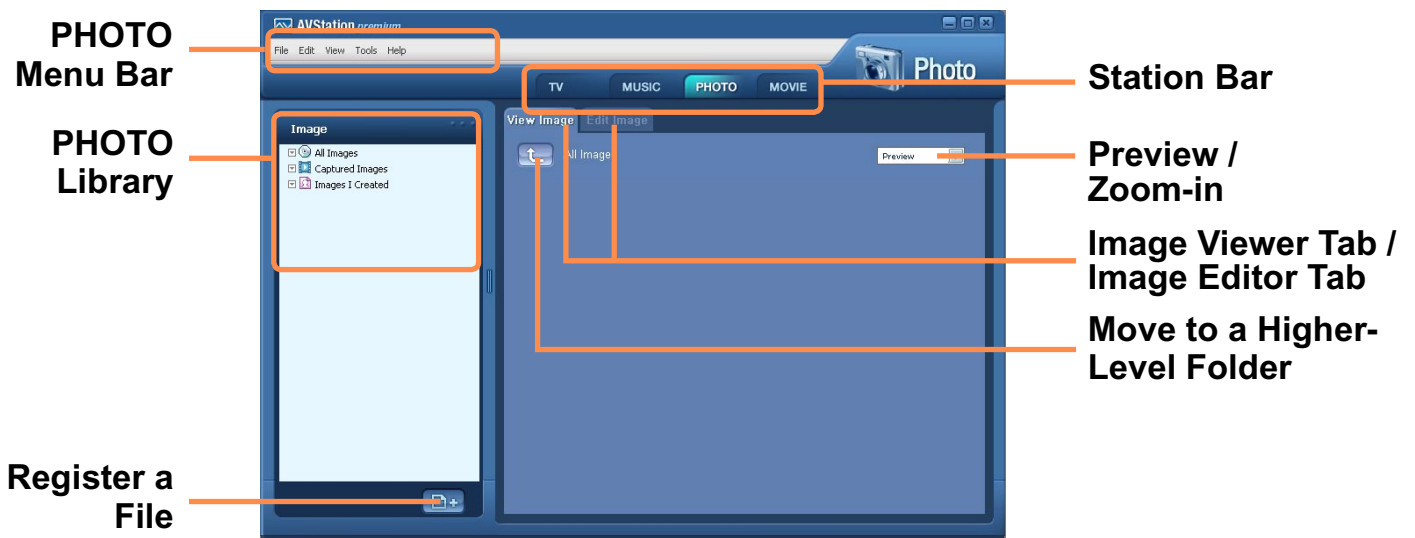
- 1 Click on the **Register a File** () button below the Library and click on **Add by Folders**.

PHOTO Station

Launch AVStation premium and click **PHOTO** on the Station Bar.



Viewing an Image

The procedures to view images registered to the PHOTO Library individually or via a SlideShow are described below.

For the procedures to register image files to the Library, refer to [p.133](#).

- 1 Move to **PHOTO Station** and double-click on **All Images**.

- 2 Click on a folder which includes images, and the images in the folder are displayed in the **Image Viewer window**.

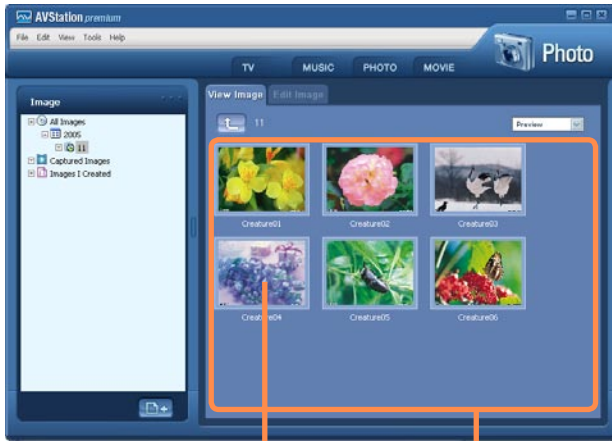


Image Image Viewer Window



3 Double-click on an image. The selected image is zoomed in on.



■ **Viewing an Image not registered to the Library**

Click **File > Open**, select an image file to view and click **Open**. The selected image file is registered to the Library and displayed in the Image Viewer window.

■ **Viewing an Image in Full Screen or through a SlideShow.**


Click the **Full Screen** () button or **SlideShow** () button below the Image Viewer window.

To return to the Image Viewer window, double-click on the screen.

■ **Watching a SlideShow while Listening to Music**

To view a SlideShow while listening to music, play music from MUSIC Station and run SlideShow.

■ **Setting an Image as the Background.**

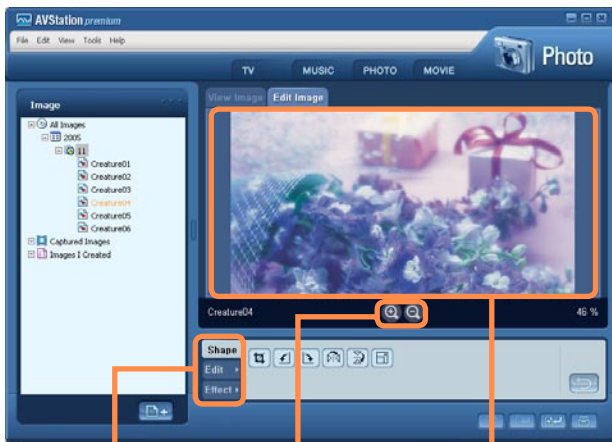
Click the **Set as Background** () button below the Image Viewer window. The selected image is set as the Desktop background.

Editing an Image

You can shape, edit, or apply special effects to an image. The image editor functions are described below.

- 1 Select an image to edit in the **Image Viewer window**, and select the **Image Editor** tab. The Image Editor screen appears.

The Image Editor screen consists of an **Image Workspace window** and **3 Tool tabs**.



Tool
Tabs

Zoom In /
Zoom Out

Image
Workspace


- 2 Edit the image using the **Shape**, **Edit** and **Effect** tools.



Shape tool: Change the shape of an image through cut, resize.

Edit tool: Draw a line, add some clip art or enter letters.


Effect tool: Apply various effects to an image.

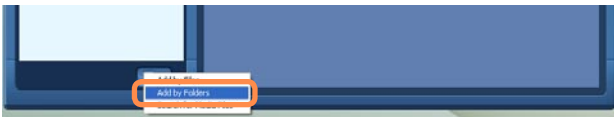
- 3 When finishing editing an image, click the **Save Edited Image** () button below the Image Editor window. The edited image is saved.

Adding Images to the Library

The PHOTO Library is a library storing image files to be used by PHOTO Station. The procedures to add image files saved on the computer to the Library are described below.

You can add files and add folders or search and add files. As an example, the procedures to add folders are described below.

- 1 Click the **Register a File** () button below the Library and click on **Add by Folders**.



- 2 Select a folder with image files and click the **OK** button.
The image files in the folder are added to the Library.



The image files used in AVStation are automatically added to the Library.

MOVIE Station

Launch AVStation premium and click on **MOVIE** on the Station Bar.



Playing a Movie File

The procedures to play a video file registered to the MOVIE Library are described below.

For the procedures to register files to the Library, refer to [p.135](#).

- 1 Move to **MOVIE Station** and double-click **All Movies**.

- 2 Double-click a video file. The file is played.





■ Playing a Video File not Registered to the Library


Click **File > Open File**, select a movie file to be played and click **Open**. The selected file is automatically registered to the Library and played.

■ Playing a Video File in Full Screen

1. Double-click on the current playback screen.
2. The video is played in full screen. In full screen, move the mouse pointer to the bottom of the screen to show the Play Control bar.

To play at the default screen size, double-click on the screen.

■ Capturing the Video Screen

Click on **Capture Current Screen** () below the Play window when the desired image appears on the screen and click the **OK** button.


Captured images are saved in the **C:\Program Files\Samsung\AVStation premium x.x\Data\Captured Images** folder.

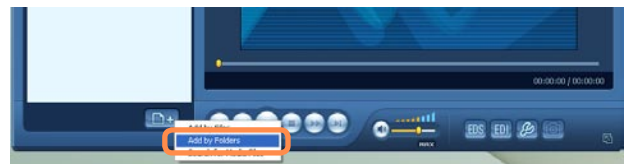
In addition, you can view captured images in the **PHOTO Station > Captured Images** folder.

Adding Videos to the Library

The MOVIE Library is a library storing video files to be used by MOVIE Station. The procedures to add video files saved on the computer to the Library are described below.

You can add files, add folders or search and add files. As an example, the procedures to add folders are described below.

- 1 Click the **Register a File** () button below the Library and click **Add by Folders**.



- 2 Select a folder which includes video files and click the **OK** button. The video files in the folder are added to the Library.



The video files used in AVStation are automatically added to the Library.

AVStation Viewer (Optional)

AVStation Viewer is a multimedia program that enables you to easily enjoy pictures, music and videos.



- The AVStation Viewer program is optional and may not be provided depending on the computer model.
- **AVStation Viewer Restrictions**
Using AVStation Viewer, you can only play files registered to the AVStation premium Library. (For the procedures to register files to the Library, refer to [☰ p.129](#), [☰ p.133](#) and [☰ p.135](#).)
- The screenshots figures may differ from actual ones depending on the program version.

Start AVStation Viewer

Starting

Pressing the **Q** button when Windows is running launches **AVStation Viewer**.


Alternatively, click **Start > All Programs > Samsung > AVStation premium > AVStation Viewer**.

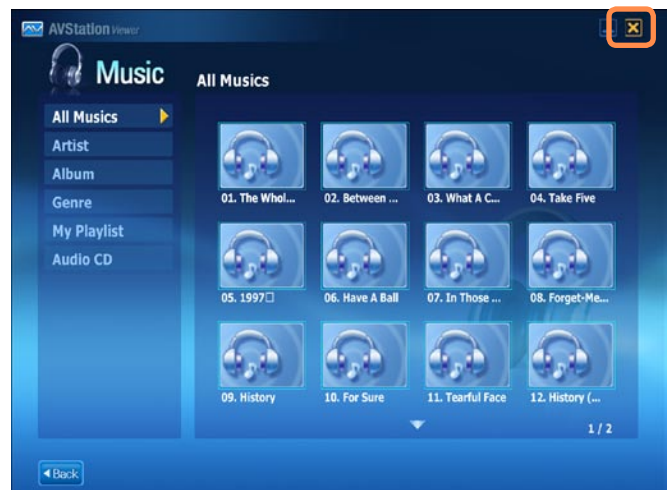


If **AVStation Viewer** does not run when you press the **Q** button on the left side of the computer, check if the **HOLD switch** on the left side has been selected.

If the **HOLD switch** is on, the computer is locked and the **Q** button will not work.

Exiting the program

Move the mouse pointer to the top of the screen and click the **Exit** () button.



Screen Layout



Music: You can play a music file or audio CD.


Photo: You can view a photograph or image file one by one or in a SlideShow.

Movie: You can play a video (movie) file.

Settings: You can configure the Music, Photo and Movie settings.



Move to the start screen while using the program


Click over the top left in the current screen. Then the  icon appears. When clicking this icon, you can move to the start screen.

Music Station

The procedures to play a music file or an audio CD are described below.

Playing a Music File

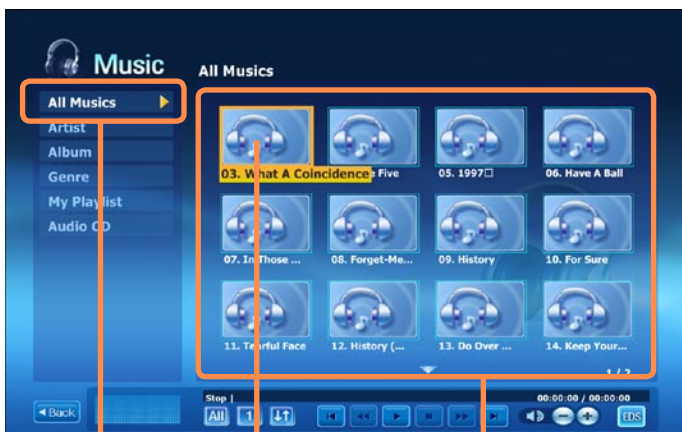
The procedures to play a music file registered to the Music Library are described below.

(For the procedures to register files, refer to  p.129.)

- 1 Launch AVStation Viewer and click on **Music**.
- 2 Click on **All Musics** and double-click a file in the right pane. The music file is played.

Playing an Audio CD

- 1 Launch AVStation Viewer and insert an audio CD into a CD drive connected to this computer.
- 2 In the AVStation Viewer start screen, click on **Music**.
- 3 Double-click the **Audio CD** in the left pane and double-click on an album or music file in the right pane. The selected music file is played.



All Musics Music File Playlist Window

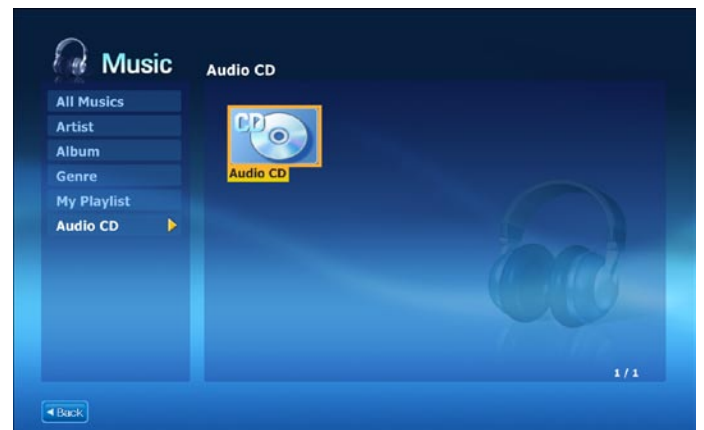


Photo Station

The procedures to view images registered to the Photo Library one by one and through a SlideShow are described below.

(For the procedures to register files, refer to ㉠ p.133.)

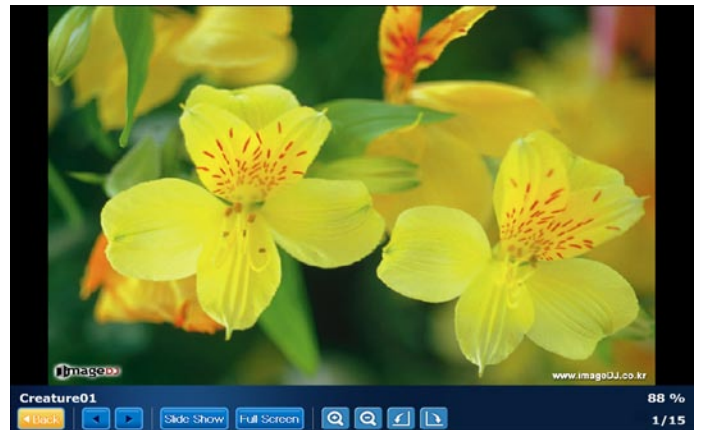
- 1 Launch AVStation Viewer and click on **Photo**.
- 2 Click on **All Images** and double-click on an image file in the right pane.



All Images

Image File

- 3 The selected image is zoomed in on.



To view an image in Full Sreen or via a SlideShow.

Click on the **SlideShow** or **Full Screen** button below the zoomed in image.

To return to the previous status in the SlideShow or Full Screen, double-click on the screen.

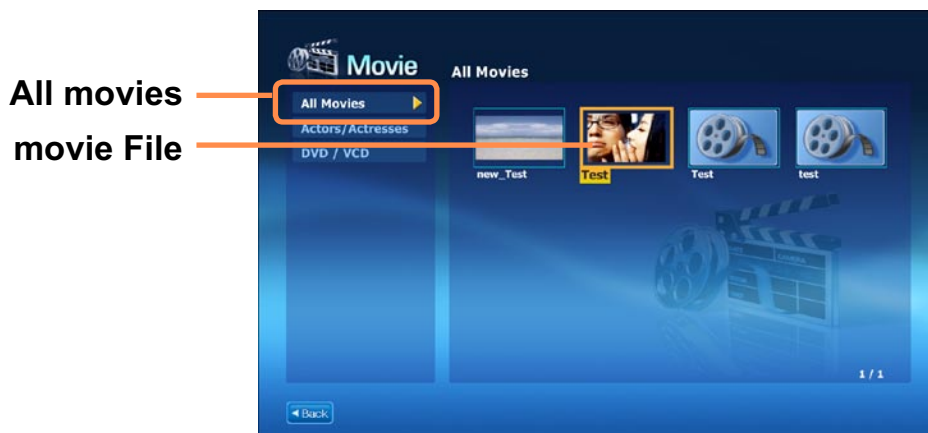
Movie Station

The procedures to play a video (movie) file are described below.

Playing a Movie File

The procedures to play a video file registered to the Movie Library are described below. (For the procedures to register files, refer to [] p.135.)

- 1 Launch AVStation Viewer and click the **Movie**.
- 2 Click on **All Movies** and double-click a movie file in the right pane. The movie file is played.



Displaying the Play Control window

When clicking on the screen once, the Play Control window appears at the bottom.

Play Camera (Optional)

This computer provides an optional dual camera on the front and back so that users can take pictures or record video.

If your computer model is equipped with the dual camera, you can take pictures or record video using the Play Camera software.



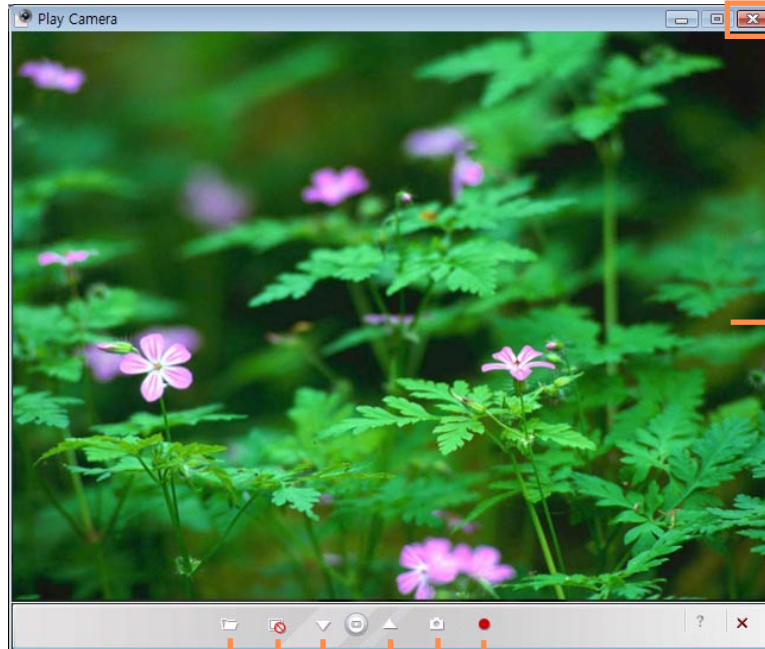
- This function is applied to some models only.
- The program version number in this manual is subject to change and the screen figures and terminologies may differ from the actual ones.
- For more detailed usage procedures, refer to the program Help.

Precautions when Taking a Picture

- Do not take a picture or record video of a person without that person's consent.
- Do not take a picture or record video where photographing is prohibited.
- Do not take a picture or record video where you may violate another person's privacy.

Photographing Procedures 1.

- 1 Select **Start > All Programs > Samsung > Play Camera > Play Camera**.



Close the Window

Preview Window

Open Folder: Opens the folder which includes photos or videos.

Preview Window: Shows or hides the Preview window.

Record: Records video.

Capture Screen (Still Picture): Takes a picture.

Rear Camera: Select to use the rear camera.

Front Camera: Select to use the front camera.

2 Press the **Front Camera** (▼) or **Rear Camera** (▲) button, focus on an object and press the **Capture Screen** (📷) button. To record video, press the **Record** (⏺) button.




To stop a video recording, press the **Stop** (⏹) button. Recording will stop.


3 Press the **Open Folder** (📁) button to view pictures or recorded videos.




- You can view a photo by double-clicking it.
- Since you cannot view recorded video files using the Play Camera, please use another video player (e.g. Windows Media Player, Cyberlink PowerDVD, etc.) to view video files.

Photographing Procedures 2.


- 1 When the computer is on, press the **SHUTTER**() button at the top.



- 2 When the Play Camera program is launched, press the **Shutter**() button again. A picture will be taken.

To switch the active camera to the rear or front camera, press the **Front Camera** () or **Rear Camera** () in the Play Camera screen and press the **Shutter**() button.

To record video, click the **Record** () button of the Play Camera program.

- 3 Press the **Open Folder** () button to view pictures and recorded videos.



- In the Preview window, right-click to configure the camera settings, the resolution and device settings, the save folder, etc.
- The Play Camera supports up to 1280 x 1024 pixels. Photographs are taken with the resolution selected but the photographs displayed on screen are only 640 x 480 pixels due to restrictions of the screen size.



- Video files recorded by the Play Camera are saved with a 320 x 240 pixels resolution.
- Since you cannot view recorded video files using the Play Camera, please use another video player (e.g. Windows Media Player, Cyberlink PowerDVD, etc.) to view video files.
- Switch front/rear camera by Play Camera program while you are video chatting through any other program. You can not preview images, take pictures, or record video with Play Camera when you are using other program.
You can not take pictures while you are video chatting.

OmniPass (Fingerprint Identification software, Optional)

(Fingerprint Identification, Integrated Password Authentication)

Using the OmniPass program, you can use the following functions.

Fingerprint Identification Function

You can register your fingerprint and use it instead of a password.

Integrated Password Authentication Function

You can use your Windows user account information using the Integrated Password Authentication Function.

If you register your Windows user account(s) information with the OmniPass program, you can login to Windows or onto websites using a single password.



- This function is applied to some models only.
- The program version described in this manual is subject to change and some functions may not be provided due to restrictions in the program.
- This model does not support the function which turns the computer on via a fingerprint.
- For more detailed information on the usage procedures, refer to the Help section in the OmniPass program(Fingerprint Identification, Integrated Password Authentication).

Signing Up

You have to register your fingerprint and Windows user account information as follows to use the fingerprint identification and integrated password authentication functions.



When using the fingerprint identification sensor

Keep your finger clean and dry when touching the sensor.

Place your finger over the fingerprint sensor and push gently down.

- 1 Select **Start > All Programs > Softex > OmniPass Control Center**.
Turn the computer on and click the **Start** button in the **Omnipass** window.

- 2 Click **Run Enrollment Wizard** to start the registration.



- 3 For the integrated password authentication step, complete the following.

Enter the Windows user ID and logon password and click the **Next** button.

If you do not enter a logon password, the integrated password authentication function will be permitted to anyone; it is therefore recommended entering a logon password.



Creating a user logon password.

- 1 Select **Start > Control Panel > User Accounts > Create password for user account.**
- 2 Enter a password in the New Password field, and re-enter the password in the Confirm New Password field. Click **Create Password.** A password has been created.

- 4 To register a fingerprint, click on **AuthenTec Fingerprint Device** and then click the **Next** button.

- 5 The fingerprint registration begins. Select the finger to be registered and click the **Next** button.

- 6 Register the fingerprint by placing your finger over the fingerprint identification sensor and placing it down slowly. Repeat this at least 3 times until the next screen appears automatically.

- 7 Place the registered finger over the fingerprint identification sensor again and click the **Next** button.

- 8 A window appears asking if you want to register an additional fingerprint. Click **No** to proceed to the next window. If you click **Yes**, Steps 4~7 are repeated.

- 9 Proceed with the settings and click the **Next** button.

- 10** When the user profile backup instruction window appears, read the contents and click on **Current Backup**. Specify a path to save the user profile to and save the name. When the backup file password window appears, enter a password and click the **OK** button.



What is a user profile backup?

This is a function for backing up the OmniPass information (fingerprint and user account information) registered on a computer so that the information can be used on another computer. For information on how to use a backed up user profile on another computer, refer to the Help section.

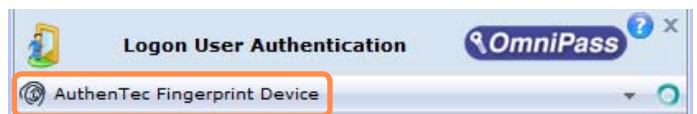
- 11** Click **Finish**. Registering information for using the fingerprint identification and integrated password authentication functions has been completed.

Logging onto Windows

- 1** If you turn the computer on after completing the user information registration step, the Logon Authentication window appears.

(To use the fingerprint identification function)

In the **Logon Authentication** window, select **AuthenTec Fingerprint Driver**, place your finger over the fingerprint identification sensor and place it down slowly.



If your fingerprint is not recognized, the fingerprint is displayed in red in the fingerprint display window. In this case, place your finger over the fingerprint identification sensor again and push it down slowly until the fingerprint is displayed in green.

(To use the integrated password authentication function)

In the **Logon Authentication** window, select **Integrated Password Authentication**. Enter the username and the login password and click the **OK** button.



User Name: xxxxxx
Domain:
Password:
Identity:
OK ✓

User Name: User account name

Password : User account password

Domain, ID: These fields are automatically entered.

- 2 When the fingerprint identification or password authentication is complete, you can logon to Windows.

Encrypting/Decrypting Files

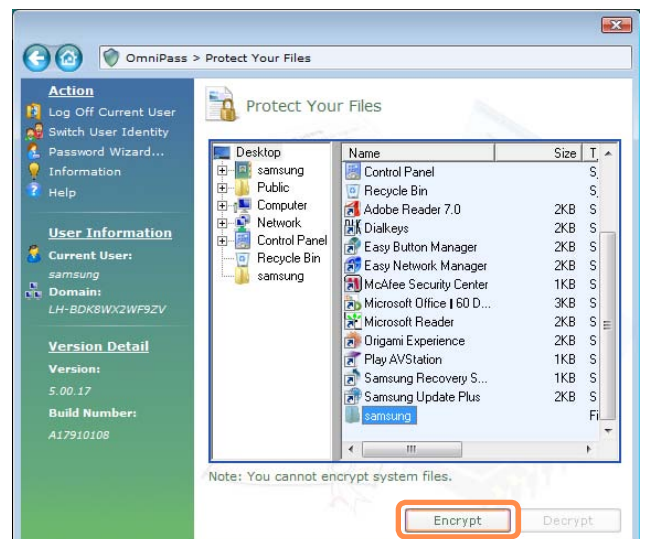
You can encrypt folders and files so that only specified users can open or modify them.

The procedures to encrypt files are described below.



This function is applied to some models only.

- 1 Select **Start > All Programs > Softex > OmniPass Control Center > File Protection**.
- 2 Select a folder or file to be encrypted and click **Encrypt**.



To decrypt encrypted folders and files

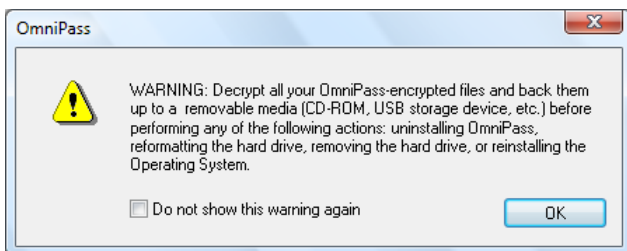
The procedures are the same as those for the encryption process except for selecting **Decrypt** instead of **Encrypt** in the figure above.

3 When the file encryption authentication window appears, select **AuthenTec Fingerprint Driver**, place your finger over the fingerprint identification sensor and push it down slowly. Alternatively, select Integrated Password Authentication and enter the login password.



If your fingerprint is not recognized, the fingerprint is displayed in red in the fingerprint display window. In this case, place your finger over the fingerprint identification sensor again and push it down slowly until the fingerprint is displayed in green.

4 If the fingerprint is recognized, the following window appears. Click OK to **encrypt** the file.



Right-click over a folder or file to be encrypted and select **OmniPass Encrypt File(s)** from the pop-up menu. The selected folder or file will be encrypted.

Logging into Internet Sites

You can easily login to frequently used Internet sites using the fingerprint identification or password authentication functions instead of entering your user ID and password.

As an example, the procedures for logging into the Hotmail site are described below.

The following describes the procedures for registering your user ID and password. Once the user ID and password of a site are registered, you can login to the site automatically.



- This function is applied to some models only.
- This function may not be supported for some Internet sites.

1 Launch Internet Explorer (🌐) and open the Hotmail site. (<http://www.hotmail.com>)

Enter your user ID and password.

2 Right-click over the (🔑) icon in the Taskbar and click on **Save Password**.

3 When the mouse pointer changes to a yellow key icon (🔑), click the login window, but not the Sign in button. If you wait a moment, the mail address and password information are retrieved.

Sign in to your page Help

E-mail address:

Password:
[Forgot your password?](#)

Save my e-mail address and password

Save my e-mail address

Always ask for my e-mail address and password

[Sign in using enhanced security](#)

Windows Live ID
Works with Windows Live, MSN, and Microsoft Passport sites
Account Services | Privacy Statement | Terms of Use
©2007 Microsoft

2 Select **AuthenTec Fingerprint Device**, place your finger over the fingerprint identification sensor and push it down slowly once. Alternatively, select Integrated Password Authentication and enter the login password.

3 If the fingerprint identification or password authentication is complete, your ID and password are automatically entered and you are logged into the website.

Login Window

4 Enter an easy to remember name and click **Finish**.

5 Thereafter you can login to your registered websites using your fingerprint or password.

1 When opening a registered site, the **Access Authentication** window appears.



Chapter 6.

Settings

BIOS Setup	151
Setting a Boot Password	156
Changing the Boot Priority	159
Battery	160

BIOS Setup

The BIOS Setup enables you to configure your computer hardware according to your needs.



- Use the BIOS setup to define a boot password, change the booting priority, or add a new device.

Since incorrect settings may cause your system to malfunction or crash, take care when configuring the BIOS.

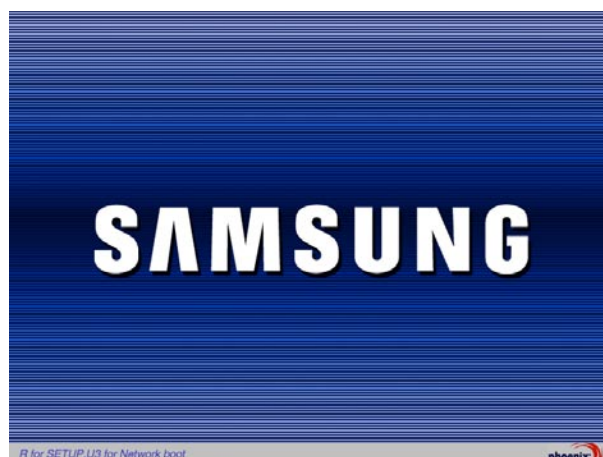
- The functions of the BIOS setup are subject to change for product function enhancement purposes.



The contents of the BIOS Setup may differ depending on the computer model and the figures in the manual may differ from the actual object.

Entering the BIOS Setup

- 1 Slide the **Power Switch** down. The computer is turned on.
- 2 The booting screen (SAMSUNG logo) appears. Press the **R button** (Ⓜ) on the right side of the computer. When an external keyboard is connected, press the **F2** key.



- After a moment, the BIOS setup screen appears.
The items in the BIOS setup may differ depending on the product.

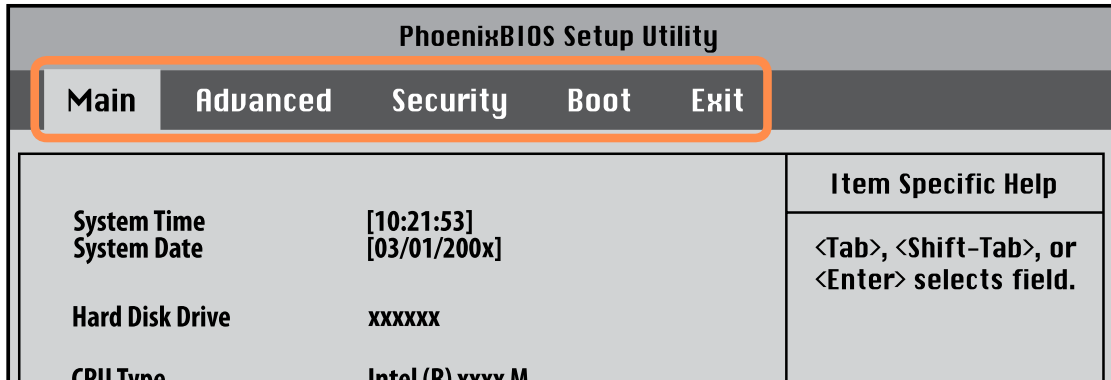
Setup Menu

PhoenixBIOS Setup Utility	
Main Advanced Security Boot Exit	
System Time [10:21:53] System Date [03/01/200x] Hard Disk Drive xxxxxx CPU Type Intel (R) xxxx M CPU Speed x.xx GHz Total Memory xxx MB Graphics Memory [Auto : Shared] BIOS Version xxxxxxxx MICOM Version xxxxxxxx	Item Specific Help <Tab>, <Shift-Tab>, or <Enter> selects field.
F1 Help ↑↓ Select Item ▼ (F5)/▲ (F6) Change Values F9 Setup Defaults ◀ (Esc) Exit ↔ Select Menu Enter SelectSubMenu F10 Save and Exit	

Help
Help for the selected item appears automatically.

Setup Items

The BIOS Setup Screen



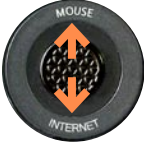
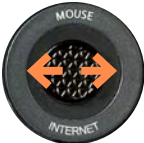


Menu	Description
Main	Used to change the basic system and environment settings.
Advanced	Used to configure advanced functions on your computer around devices and chipsets.
Security	Used to configure security functions, including passwords.
Boot	Used to set the boot priority and other boot options
Exit	Used to exit the Setup either saving the changes or not.

System Setup Buttons (Keys)

The following Buttons(keys) are used in System Setup.



When an external keyboard is connected, you can use the key enclosed in parentheses. For example, press the **F1** key on the external keyboard instead of the **L** button.

Setup Key	Button	Function
L Button (F1 Key)		If you press the L button, Help appears. If you press it again, Help disappears.
Mouse/Joystick Up & Down (↑ ↓ Keys)		If you push the Mouse/Joystick up or down, you can move up or down the item list.
Mouse/Joystick Left & Right (← → Keys)		If you push the Mouse/Joystick left or right, you can move to another menu.
▼ (F5 Key) / ▲ (F6 Key)		Press the ▼ (F5) / ▲ (F6) buttons to change the value of an item.
◀ (Esc Key)		Press the ◀ button to return to a higher-level menu or to move to the Exit menu.

**Enter Button
(Enter Key)**



Selects an item or opens a submenu.

(F9 Key)

To initialize the setup settings, press the **F9** key on the external keyboard.

If an external keyboard is not connected, select **Exit > Load Setup Default** from the setup menu.

(F10 Key)

To save the changes press the **F10** key on the external keyboard.

If an external keyboard is not connected, select **Exit > Exit Saving Changes** from the setup menu.



Exiting the System Setup

1. Move to **Exit Menu > Exit Saving Changes** by using the **Mouse/Joystick** and press the **Enter** button.
2. Select **Yes** and press the **Enter** button. The System Setup is closed and Windows is started.

Setting a Boot Password

When setting a password, you have to enter a password to use the computer or enter the BIOS Setup.

By configuring a password, you can restrict system access to authorized users only and protect data and files saved on the computer.



Do not lose or forget your password.

If you have forgotten your password, contact a Samsung service center. In this case, a service fee will be charged.

For the setup buttons, refer to the description of 'System Setup Buttons (Keys)'.

☰ p154

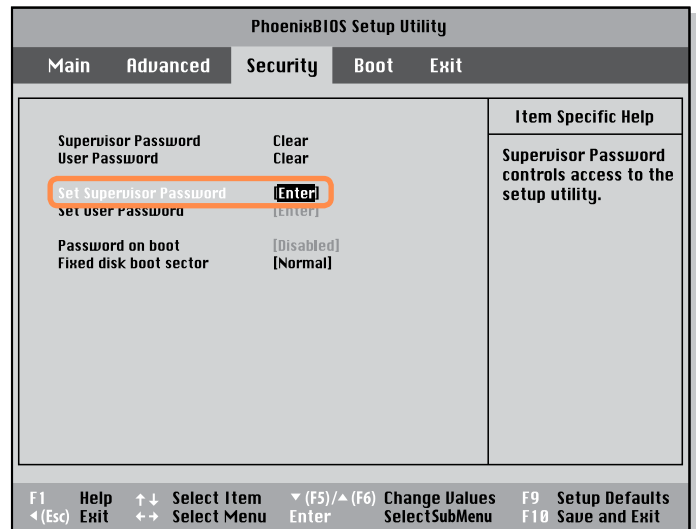
Setting a Supervisor Password

A Supervisor Password is required to turn the computer on or to start the System Setup.

When setting a Supervisor Password, users other than a supervisor cannot use the computer.

1 Select the **Security** menu in the BIOS Setup.

2 In the **Set Supervisor Password** item, press **<Enter>**.



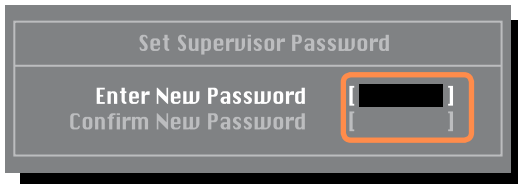
- 3 Enter the password with the keypad and press the **Enter** button. Reenter the password and press the **Enter** button.

You can use up to 7 alphanumeric characters for a password but you cannot use special characters.

The ← key on the keypad performs the role of Delete and the ◀ button performs the role of the Cancel (Esc) function.



To enter a number, press Num Lock and then enter the number. If you do not press Num Lock, the characters of the corresponding keys are entered instead of digits.



- 4 When a message confirming the password configuration appears in the [**Setup Notice**] window, press <Enter>.

The supervisor password has been set. The supervisor password is required to turn the computer on or to enter System Setup.

Setting a User Password

Users can start the system with a user password, but cannot enter the System Setup. By doing this, you can prevent other users from entering Setup.

Before configuring a user password, a supervisor password must have been configured. Deactivating the supervisor password also deactivates the user password.

In the **Set User Password** item, press <Enter> and complete the procedures of Step 3 of Setting a Supervisor Password.

Activating the Booting Password

Before activating the booting password, a supervisor password must have been configured.

Set the **Password on boot** option to **Enabled**. From now on, system booting will not proceed without the password.

Deactivating the Password

- 1** On the password to be deactivated, press **<Enter>**. For example, to deactivate a supervisor password in the **Set Supervisor Password** item, press **<Enter>**.
- 2** In the **Enter Current Password** item, enter the current password and press **<Enter>**.
- 3** Leave the **Enter New Password** item field empty, and press **<Enter>**.
- 4** Leave the **Confirm New Password** field empty, and press **<Enter>**.
- 5** In the [**Setup Notice**] window, press **<Enter>**.
The password is deactivated.

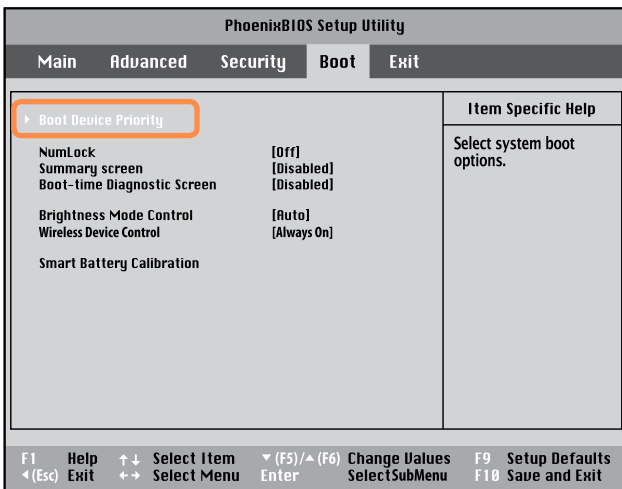
Changing the Boot Priority

The default boot priority of your computer is the CD-ROM first, then a removable device and then the hard disk drive in this order.

You can change the booting priority using the Boot menu of the System Setup. As an example, the procedures to change the highest boot priority device to the hard disk drive are described below.

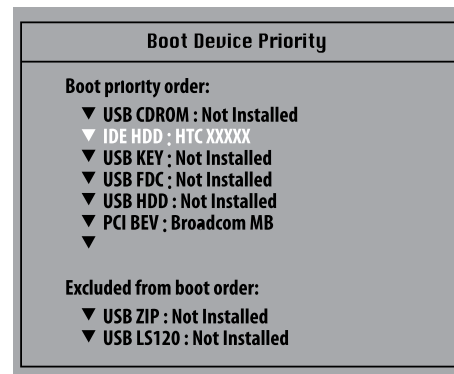
1 Select the **Boot** menu in the BIOS Setup.

2 Press <Enter> on the **Boot Device Priority** item.



3 Push the **Mouse/Joystick** down to move the booting device upwards.

Alternatively, you can move the booting device by using the ▲ or ▼ buttons.



4 Press the ◀ button to exit the **Boot** menu. Move to **Exit > Exit Saving Changes** by using the **Mouse/Joystick** and press the **Enter** button. The changes are saved and Setup is closed.

Battery

Please refer to the following instructions when running the computer on battery power without connecting the AC power.

A Lithium-Ion smart battery is supplied with this computer.



Carefully read and follow the precautions printed on the battery before using the battery.



Precautions

Use only chargers specified in the User Guide.

Never heat the battery pack, put it near or in a fire or use at a temperature higher than 60°C, as this may cause fire.

Never cause a short circuit between the battery pack terminals or disassemble the battery pack.

Carefully read and follow the precautions printed on the battery and the safety instructions in the User Guide before using the battery.

Please refer to the system operation environment (☞ p.205) of this guide. Operate and store the battery at room temperature.

Installing/Removing the Battery

- 1 Shutdown the system and place the computer upside down on a flat surface.
- 2 Lift the Stand up and push the Battery Latch down into the **Release** (🔓) position.

Lift the battery up and separate it.



- 3** To reinstall the battery, align the battery to the outside of the computer and insert the battery.

Lift the battery latch up to the **Lock** (🔒) position and put the Stand down.



When you are unable to insert the battery, check if the battery latch is in the **Release** (🔓) position. If it is in the **Lock** (🔒) position, you cannot insert the battery.

Charging the Battery

- 1 Attach the battery and connect the AC adapter to the DC-in jack of the computer.
The battery will then start charging.
- 2 When charging is complete, the Charge LED turns green.

Status	Charge LED
Charging	Amber
Charging complete	Green
AC adapter not connected	Off

Measuring the Remaining Battery Charge

You can view the battery charge status by completing the following procedures.

Viewing through the MENU button

Press the **MENU** button and press on **Battery**.

To view on the battery

Press the button on the outside of the battery to check the remaining battery charge.



Battery Usage Time Information

A battery is an expendable supply, so when using it over a long time, the capacity/battery life is shortened. If the battery life is reduced to under half of its initial time, we recommend purchasing a new battery.

For long periods of not using the battery, keep the battery after discharging it. This extends the battery life time.





Battery Warning

- You will hear an alarm when the remaining battery charge reaches below 10%.
In this case, connect the AC adapter or turn off the computer and install a fully charged battery.
- If the battery residual amount is 3~5%, the computer automatically shuts down after saving the data. The battery residual amount may vary depending on the computer model.

Extending the Battery Usage Time

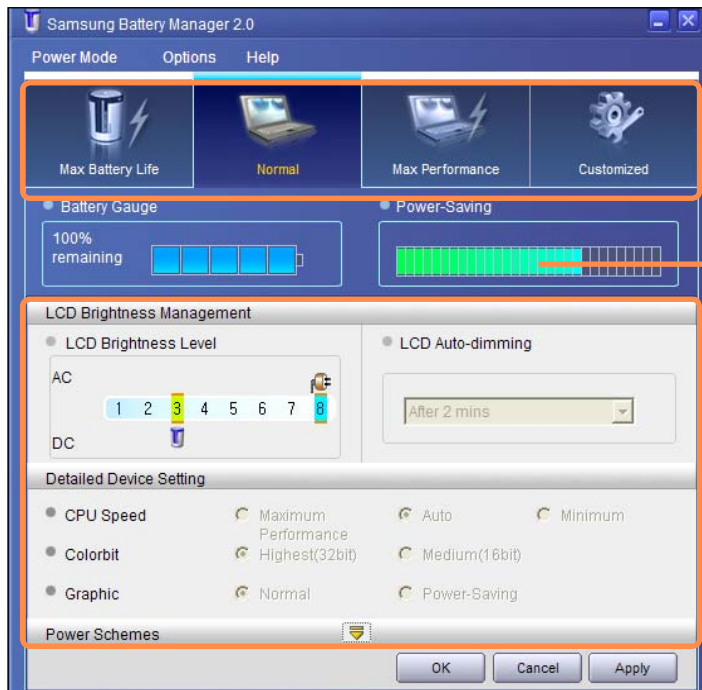
Decreasing the LCD Brightness

For the models with Touch Sensor buttons, press the **MENU** button and click  from the **Brightness** item to decrease the LCD brightness. Then you can extend the battery usage time.

For models without a Touch Sensor button, you can extend the battery use time by pressing the **User Defined button** () while holding down the **INTERNET** button below the **Mouse/ Joystick** buttons. The LCD brightness is decreased and you can extend the battery usage time.

Using Samsung Battery Manager

Samsung Battery Manager is a power management program that enables using the battery power efficiently. You can select an optimized power mode according to your requirements. Click **Start > All Programs > Samsung > Samsung Battery Manager > Samsung Battery Manager**.



Change Power Mode

Power Saving Effects

You can only change the detailed configuration in Custom Mode.

Maximum Battery Saving Mode

This mode is appropriate for conditions which require the maximum battery usage time. This may degrade the performance of the system.

Normal Mode

This mode is appropriate for normal conditions. Both system performance and battery usage time are optimized.

Maximum Performance Mode

This mode is appropriate for conditions that require maximum system performance. Therefore, the battery usage time may be reduced in this mode.

Custom Mode

In this mode, you can configure the unit to save battery usage. You can adjust the LCD brightness, the system standby time, the screen color quality, and the graphics mode values.



Power Saving Effect

This shows the relative battery usage time for each power mode. The more effective the power saving, the longer the graph will appear.



When Running a Game or Multimedia Application

A game or multimedia application may not work smoothly in Maximum Battery Saving Mode. Using this is recommended when the AC adapter is connected or in Normal or higher modes.

Samsung Battery Manager Power Modes

- Since the Maximum Battery Saving Mode of the Samsung Battery Manager controls the system operating speed to extend the battery usage time, the performance of the system may be degraded.
- When changing the power settings in Custom Mode in the Samsung Battery Manager, the settings of the Power Options Properties window are changed accordingly.
- To use Normal Mode in Samsung Battery Manager after reinstalling Windows XP, you have to install the Samsung Battery Manager using the system software media.

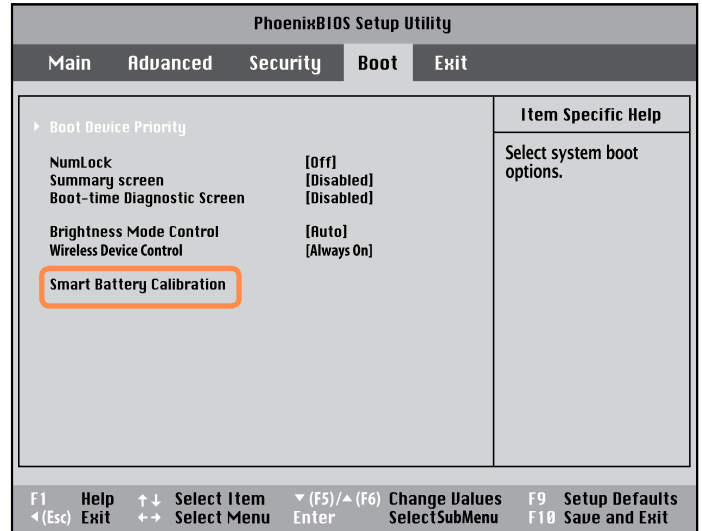
Using the Battery Calibration Function

When charging/discharging the battery repeatedly for a short time only, the battery usage time may be reduced by the difference between the actual battery charge and the remaining charge display.

In this case, the actual battery charge and the remaining charge display will be the same by discharging the battery completely using the Battery Calibration function, and then recharging it again.

- 1 Disconnect the AC power adapter after turning off the computer.
- 2 Turn the computer on again. When the SAMSUNG logo appears, press the **R** button to enter Setup.

- 3 Using the arrow keys, select **Smart Battery Calibration** in the **Boot** menu and press **Enter**.



- 4 Highlight **Yes** in the Battery Calibration Confirmation window and press **<Enter>**.

The Battery Calibration function is activated and the battery is forcefully discharged. To stop the operation, press the **<Esc>** button.

This operation requires 3~5 hours depending on the battery capacity and the remaining battery charge.



Chapter 7.

Appendix

Using Samsung Magic Doctor (Optional)	167
Using McAfee SecurityCenter (Optional)	168
Reinstalling Software	170
Reinstalling Windows XP	172
Samsung Recovery Solution (Optional)	177
Q & A	187
Product Specifications	205
Glossary	215
Index	218
Contact SAMSUNG WORLD WIDE	219

Using Samsung Magic Doctor (Optional)

Magic Doctor is troubleshooting software provided by Samsung Computer. A user can diagnose system problems via one-click or by selecting diagnostic items.



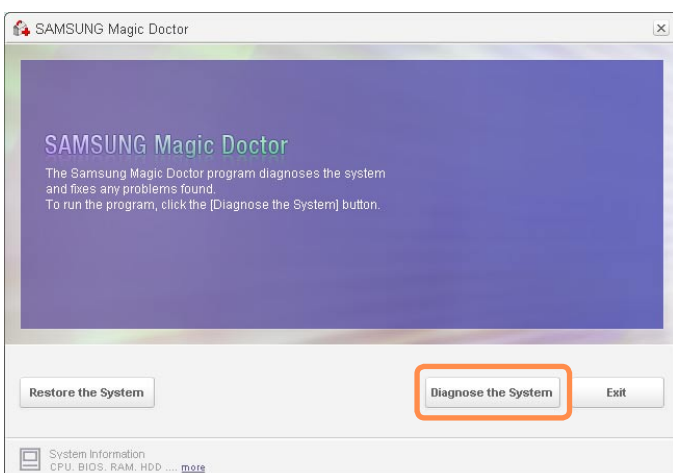
The screens used in this manual may differ from actual screens according to the program version.

Diagnosing the System

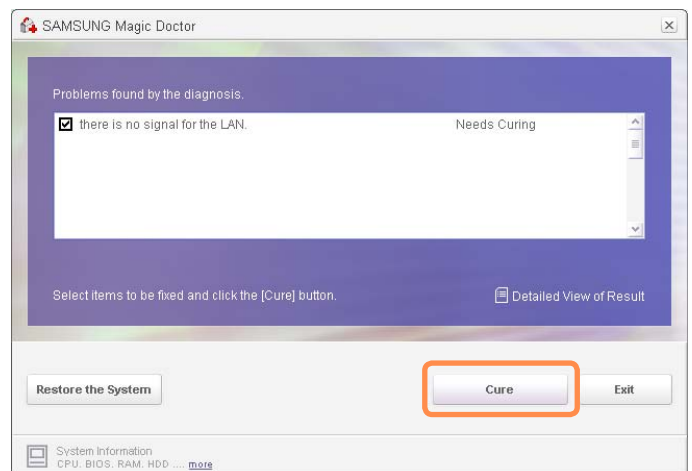
Diagnosing the System is a function to check system connections and diagnose problems affecting to system operation and solve it.

1 Click **Start > All Programs > Samsung > Samsung Magic Doctor > Samsung Magic Doctor**.

2 Click on **Diagnose the System** to start diagnosing the system.



3 When the system diagnosis is completed, the diagnostic result appears.



If problems are found, click the **Cure** button to correct the problem. Samsung Magic Doctor starts the corrective operations.

Using McAfee SecurityCenter (Optional)

With the wide variety of viruses, hackers and blended threats lurking on the Internet today, you need more than a simple anti-virus program to keep your PC and files secure. McAfee Web Essentials (including AntiVirus, Firewall & AntiSpyware) is the program which provides the essential protection you need to surf the Web and download files safely.




We recommend installing McAfee Web Essentials before connecting Internet.

Installing McAfee Web Essentials

For some models, the McAfee program is already installed.

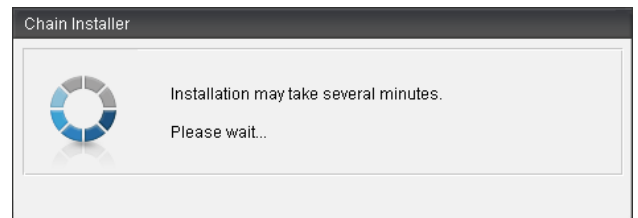
If the McAfee Security Center icon exists on the Taskbar or as a shortcut icon on the Desktop, installation is not required.



1 Click **Install McAfee Web Essentials** icon () on the Desktop.



2 Wait for 3~5 minutes until 'Chain Installer' windows is closed.



3 After 'Chain Installer' window is closed, McAfee Web Essentials will protect your PC.