

Windows Hot Key Function

You can use the following convenient hot keys in Windows 8.

Function	Hot Keys	Function Description
Displaying the Start Screen	Windows Key	Switches to Start mode.
Displaying the Desktop	Windows Key + D	Switches to Desktop mode.
Running the Charms	Windows Key + C	Activates the Charms.
Locking the Screen	Windows Key + L	Locks the screen.
Opening the Ease of Access Center	Windows Key + U	Opens the Ease of Access Center configuration.
Opening the Second Screen Settings	Windows Key + P	Opens the External Monitor Settings menu.
Opening the Advanced Management Tool	Windows Key + X	Opens the Advanced Management Tool.
Exit App	Alt + F4	Exits the currently running App.



Chapter 3. Using the computer

Keyboard	43
Touchpad	46
External-type CD drive (ODD, To be purchased)	50
Multi Card Slot (Optional)	52
Connecting an External Display Device	55
Adjusting the Volume	59
LCD Brightness Control	61
Wired Network	62
Wireless Network (Optional)	66
Mobile broadband (Wireless WAN, Optional)	68
Using the TPM Security Device (Optional)	69
Using the Multimedia App (Optional)	78
Samsung Software Update	82
Diagnosing the Computer Status and Troubleshooting	83

Shortcut key functions and procedures are discussed in the following sections.



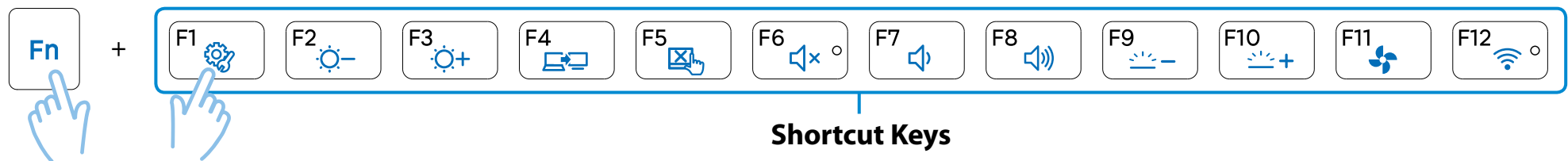
- The keyboard image may differ from the actual keyboard.
- The keyboard may differ depending on your country. The following mainly describes the shortcut keys.

Shortcut Keys

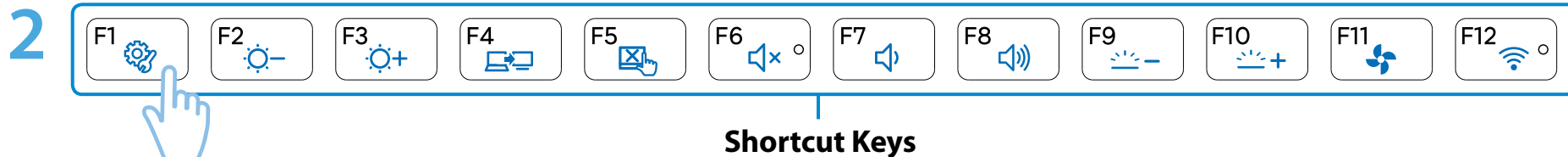
Press both the **Fn** key and hot key at the same time.













Alternatively, press the **Fn Lock** key as well as a hot key to use the hot key functions more easily.

► Method 1



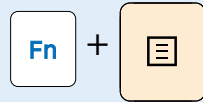
► Method 2



Shortcut Keys	Name	Function
	Settings	The Samsung software control program, the Settings , is launched.
 	Screen Brightness Control	Controls the screen brightness.
	LCD/External Monitor	Switches the screen output to the LCD or external monitor when an external monitor (or TV) is connected to the computer.
	Touchpad	Turns the Touchpad function on or off. When using an external mouse only, you can turn the Touchpad off.
	Mute	Press this button to turn the audio on or off.
 	Volume Control	Controls the volume.
 	Keyboard Backlight Brightness Control (Optional)	When it is dark or when the illumination sensor is turned off, you can manually control the brightness of the keyboard backlight.
	Silent Mode	Reduces the Fan noise so that users can use the computer without hearing noise.
	Airplane Mode	Turns all wireless network devices on or off. (Only for models with a wireless network device.)

Other Function Keys (Optional)

- Performs the right-click mouse function (touchpad).



- If you press the **Fn Lock** key, you can use the hot key functions without pressing the **Fn** key.



If the hot keys do not work properly, you have to install the **Settings**.

The touchpad provides the same function as a mouse and the left and right buttons of the touchpad plays the role of the left and right buttons of a mouse.

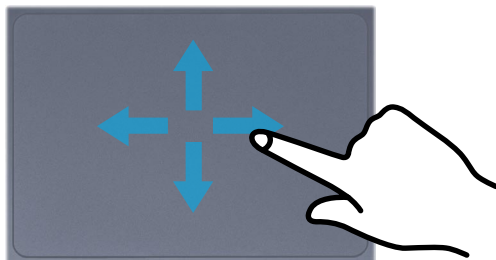


- Touch the touchpad with your fingers only. Anything other than your fingers, such as a ball-point pen, will not be recognized by the touchpad.
- If you touch the Touchpad or press the Touchpad buttons while booting up, the Windows boot time may be extended.

Basic Touchpad Functions

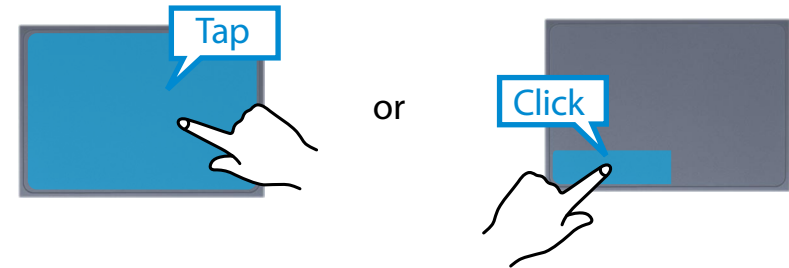
Moving the cursor on the screen

Place your finger on the touchpad slightly and move your finger. The mouse cursor will move accordingly. Move your finger in the direction you wish to move the cursor.



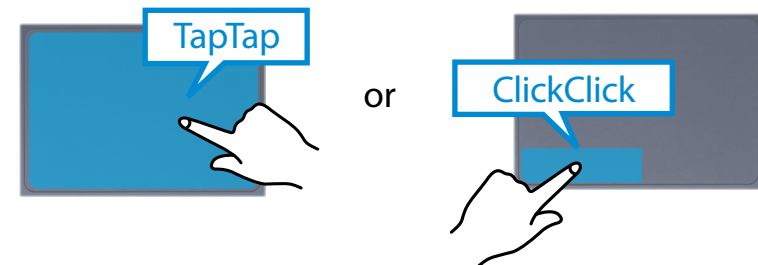
Click Function

Place a finger on the touchpad and click on an item once. Alternatively, press the left button once quickly and release it.



Double-Click Function

Put your finger on the touchpad and quickly tap twice with your finger on an item you want. Alternatively, press the left touchpad button twice quickly.

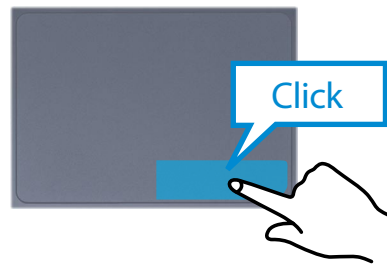


Touchpad

Right Button Function

This corresponds to clicking the right mouse button.

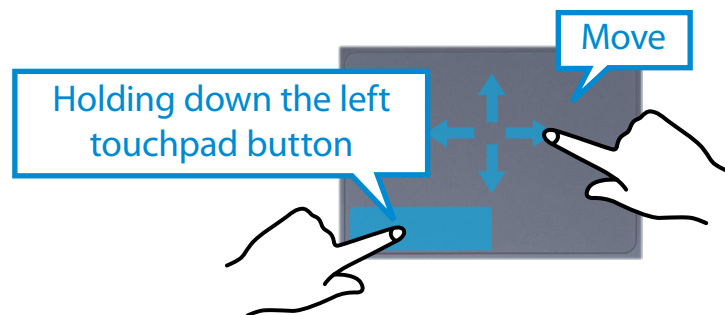
Press the right touchpad button once. The corresponding pop-up menu appears.




Drag Function

Dragging refers to moving an item to another place after selecting it.

Press and hold down the left touchpad button over an item you want to drag and move the item to the new location.




The Gesture Function of the Touchpad (Optional)


 The Touchpad Gesture function may not be provided and the version of the function may differ depending on the model. Some usage procedures may differ depending on the version.

Configuring the Gesture Function

Some gesture functions may not be configured.

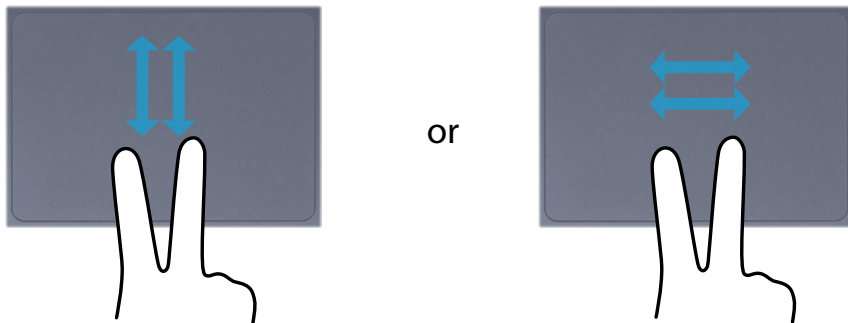
In this case, you can configure them using the following path.

- 1 On the Desktop, click the **Charms menu** > **Settings**  > **Control Panel** > **Hardware and Sound** > **Touchpad** icon.
- 2 When the Touchpad Settings window appears, click the corresponding item in the **Select an Item to Configure** setting to select the checkbox for the corresponding item.

 To cancel the Gesture function, deselect the checkbox for the corresponding item in the Touchpad Settings window.

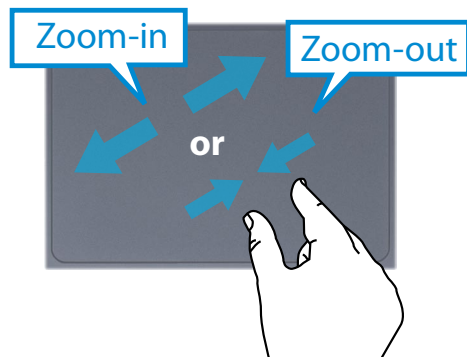
The Scroll Function

This function is the same as the scroll area of the Touchpad. If you place two fingers over the Touchpad and move them up, down, left or right, the screen is scrolled up, down, left or right accordingly.



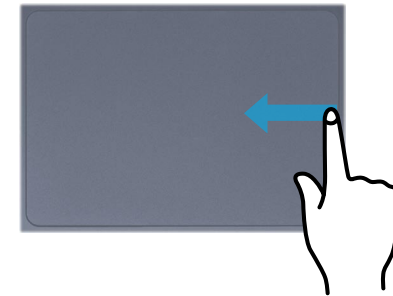
Zoom Functions

If you place two fingers over the Touchpad together or apart, the current image or text is zoomed in or out.



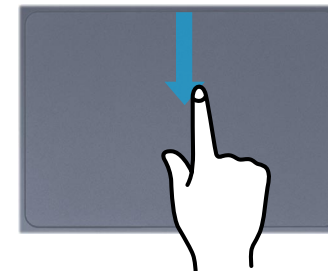
Charms Menu Activating Function

If you place your finger on the right edge of the touch pad and drag your finger toward the center, the Charms menu appears.



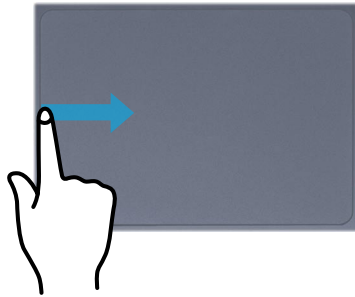
Displaying Additional Menu(s) of a Currently Running App

Place your finger at the edge of the top area on the touch pad and drag your finger toward the center, and the menu of the currently running App appears.



Last Run Window Opening Function


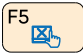
Place your finger on the left edge of the touch pad and drag your finger towards the center to activate a previously operating program from among the currently running programs.


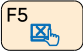


Touchpad On/Off Function

Locking with shortcut keys

If you want to use the mouse only without using the touchpad, you can turn the touchpad off.

To lock the touchpad function, press the  +  keys.

Alternatively, press the  key and then press the  key to turn the touchpad function off.



You can set the touchpad and touchpad button settings in the tabs that appear when clicking **Charms menu on the Desktop > Settings > Control Panel > Hardware and Sound > Touchpad**.

Auto-locking when connecting USB mouse

If an external USB pointing device is connected in the **Charms menu in Desktop > Settings > Control Panel > Hardware and Sound > Touchpad**, check Disabled to disable the touchpad feature when connecting to the USB mouse.



This auto-locking function is not provided for some models.

This computer supports an external USB CD-ROM drive (can be additionally purchased).

Check if the interface type of the external CD-ROM drive is a USB type. For detailed specifications, refer to the catalog.

- Do not insert a cracked or scratched CD. Otherwise, the CD may break and damage the optical disk drive when the CD rotates at a high speed.
- When you clean a CD or DVD title, wipe with a soft cloth from inside to outside.
- Do not eject a CD when the CD operating LED is on.
- The figures used for the description are of a representative model. Therefore the figures may differ from the real ones.
- Using a CD that is not in the shape of a circle is not recommended.

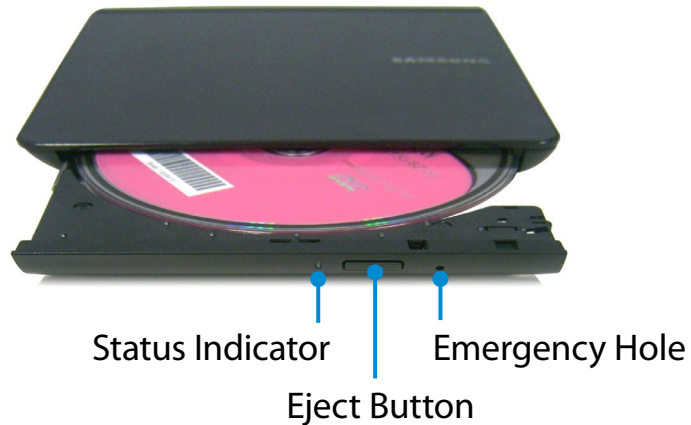
Connecting the CD Drive

Connect the CD drive to the **USB port**.




Inserting and Ejecting a CD

- 1 Press the **Eject** button of the CD drive.



- 2 When the CD tray opens, insert a CD or DVD and push the tray in until it clicks.
- 3 Push the CD tray inward until it clicks.
The CD drive status indicator is turned on.



- A CD drive's reading and writing speed may differ depending on the condition and type of the media.
- To eject a CD when the CD drive does not work or the computer is off, place the end of a paper clip () into the Emergency Hole until the CD tray is ejected.

Multi Card Slot (Optional)

Using the multi-card slot, you can read and write data on various types of memory cards.

When you insert a memory card, make sure to insert the memory card in the correct direction. Pushing an incorrectly inserted memory card may damage the card itself or the slot.



Micro SD / SD slot,
*micro SD (T-Flash), *micro SDHC,
*micro SDXC, *micro SDXC UHS-I,
SD, *mini SD, SDHC, *mini SDHC,
SDHC UHS-I, SDXC, SDXC UHS-I



- You can use memory cards as a removable disk and conveniently exchange data with digital devices such as a digital camera, etc.
- Separately purchase memory cards of your desired capacity.
- The color of the multi-card slot may differ from the picture in this manual.
- Before using the slot, remove the dummy card from inside the slot. (Only for models providing dummy cards.)
- Insert the memory card into the multi-card slot in the direction printed on the slot.
- For memory cards marked with '*', you must insert them into a specified adapter and then insert the adapter into the multi-card slot.
Inserting such memory cards directly into the multi-card slot without using a specified adapter may damage the computer.
- The computer may not recognize the device depending on the status of the specified adapter.



Memory Card Naming

The following table shows the full names of memory cards for each abbreviation.

Abbreviation	Memory Card's Name
SD	Secure Digital
*mini SD	mini Secure Digital
*micro SD	micro Secure Digital
SDHC	Secure Digital High Capacity
*mini SDHC	mini Secure Digital High Capacity
*micro SDHC	micro Secure Digital High Capacity
SDHC UHS-I	Secure Digital High Capacity Ultra High Speed Phase I
SDXC	Secure Digital eXtended Capacity
*micro SDXC	micro Secure Digital eXtended Capacity
SDXC UHS-I	Secure Digital eXtended Capacity Ultra High Speed Phase I
*micro SDXC UHS-I	micro Secure Digital eXtended Capacity Ultra High Speed Phase I

Multi Card Slot (Optional)

- 1 Insert a memory card into the multi-card slot in the correct direction.
- 2 The following message appears on the top right. Click to **open the folder and click** View Files.

Removable Disk (F:)

Tap to choose what happens with memory cards.



If a message appears to notify you of any problem, click the corresponding window > **Continue without Scanning**. You can perform the following process described in No. 3.

- 3 **Windows Explorer** runs on the Desktop. You can save, move and delete data on the corresponding drive.

To remove a memory card


Remove the card while holding the tip of the card.


Alternatively, push the tip of the card in and then remove it once it pops up.

Multi Card Slot (Optional)

To format a memory card

When using the memory card for the first time, you must format the card before using it.

 Formatting a card deletes all data saved on the card. If the card includes data, backup the data before formatting it.

- 1 Click the **Windows Explorer**  icon in the taskbar on the Desktop.
- 2 Right-click over a card drive with the touchpad and select **Format**.
- 3 Click **Start** to the formatting.




- To share a memory card with a digital device such as digital camera, it is recommended to format the memory card in the digital device before use. If you format a memory card on the computer and then insert the memory into the digital device, you may need to format the memory card again in the digital device.
- If there is a write-protection device in the memory card and the device is set to the lock position, you cannot format, write data, nor erase data from the card.
- Repeatedly inserting and removing a memory card may damage the memory card.
- The SD slot does not support SDIO (Secure Digital Input Output).
- You cannot read or write copyright-protected data.

Connecting an External Display Device

If you connect an external display device such as a monitor, TV, projector, etc., you can view the picture on the wider screen of the external device when you give a presentation or watch a video or movie.

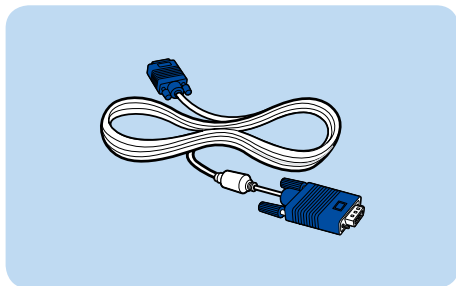
There is an analog monitor port (D-SUB) and a micro digital video and audio port (Micro HDMI).

Since the visual quality is higher for Micro HDMI than D-SUB, if more than one port is available, connect the port that provides the higher visual quality.

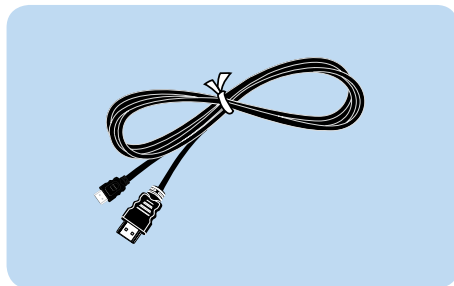
 Before you start, check the port and cable of the external display device and then connect the display device to the computer.

About the connection cable

Users should additionally purchase the necessary connection cables.



Analog Monitor (D-SUB) Cable



HDMI to micro HDMI Cable

Connecting to the monitor port (Optional)

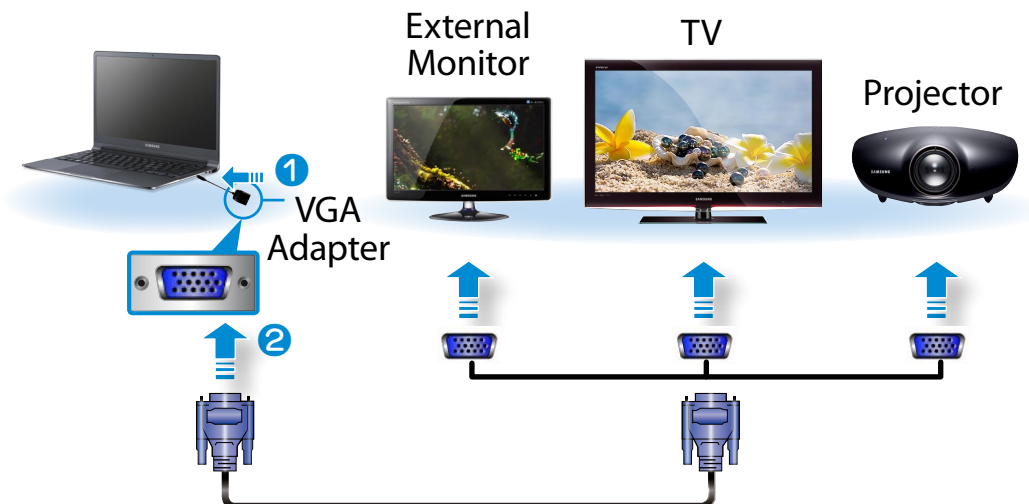
You can experience a wider screen by connecting the computer to a monitor, TV or projector with a monitor port.

You can give better presentations by connecting the computer to a projector.

 The VGA adapter is optional and to be purchased.


- 1 Connect the VGA adapter to the monitor port of the computer.

Connect the VGA cable (15-pin) to the connected VGA adapter and then connect the other end of the VGA cable to the D-SUB port of the monitor or the TV.



Connecting an External Display Device

- 2 Connect the power cord of the connected monitor, TV or projector and turn the power on.

 Change your TV to external device mode when connecting to the TV.

- 3 Select **Charms menu > Devices**  **> Second Screen**.
Select a desired monitor mode.



PC screen only

The contents are only displayed on the PC monitor (current device).



Duplicate

The contents of the current device are displayed on the external device as well.



Extend

The screen of the current device is expanded to the external device.



Second screen only

The contents are displayed only on the screen of the external device.



Alternatively, to set up dual view:

Open the **Display Settings** window in the Control Panel, select **Monitor 2** and select the **Expand to fit to this monitor** checkbox to set dual view. For more detailed information, refer to the Windows online help.

Connecting through the Micro HDMI port (Optional)

By connecting the computer to a TV with a HDMI port, you can enjoy both a high visual quality and a high sound quality.

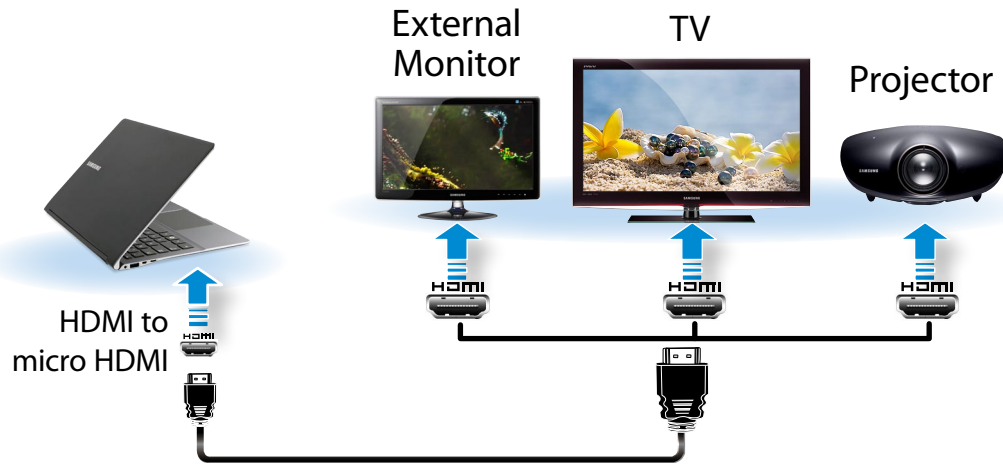
After connecting a TV through HDMI, you have to configure the screen and sound.



You have to additionally purchase the HDMI to micro HDMI cable.





Connecting an External Display Device

- 1 Connect the HDMI to micro HDMI cable to the HDMI port of the TV.



- This is only supported for models that support a TV output port (HDMI).
- When a TV provides more than one HDMI port, connect the computer to the **DVI IN** port.
- When connecting the computer to a TV, switch the external input mode of the TV to **HDMI**.


- 2 Select **Charms menu > Devices**  > **Second Screen**.
Select a desired monitor mode.

	<p>PC screen only</p> <p>The contents are only displayed on the PC monitor (current device).</p>
	<p>Duplicate</p> <p>The contents of the current device are displayed on the external device as well.</p>
	<p>Extend</p> <p>The screen of the current device is expanded to the external device.</p>
	<p>Second screen only</p> <p>The contents are displayed only on the screen of the external device.</p>

- External Monitor / TV is not supported in the DOS Command Prompt window.
- Simultaneous output to all 3 (LCD + CRT + HDMI) is not supported.

Using multiple displays (Optional)


You can connect and use two displays devices by connecting them to the monitor and the Micro HDMI ports respectively.

 This function is supported for **13.3 inch Intel® HD Graphics 4000 models**.

You can check if this feature is available by selecting **Computer > System Properties > Device Manager > Display adapters** and confirming that the display adapter is an **Intel® HD Graphics 4000**.

- 1 Connect the display devices to the monitor and the Micro HDMI ports.
- 2 Right-click on the Desktop and select **Graphics Properties > Display > Multiple Displays** from the popup menu.

- 3 Configure the settings and click **Apply**.



Select either Clone or Extended Desktop.

Select the number of displays (3)

Configure display devices 1 to 3.

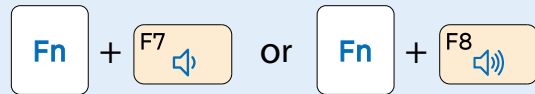
Specify the locations of the devices.

The screenshot shows the Intel Graphics and Media Control Panel. The 'Operating Mode' is set to 'Extended Desktop'. The 'Active Displays' are set to 3. The 'Primary Display' is 'Monitor', the 'Second Display' is 'Digital Display', and the 'Third Display' is 'Built-in Display'. The 'Positioning' section shows three numbered boxes (1, 2, 3) representing the display locations. The 'Apply' button is highlighted.

Adjusting the Volume

You can adjust the volume using the keyboard and the volume control program.

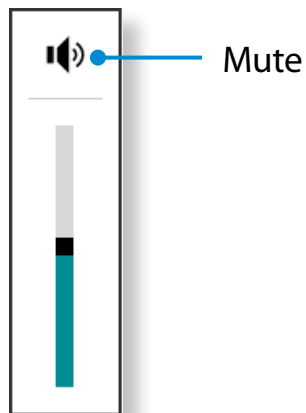
Adjusting the Volume using the Keyboard



Alternatively, press the **Fn** + **F6** key combination to turn the volume on or off.




Adjusting the Volume using the Volume Adjustment Program

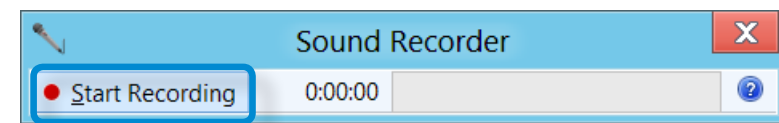
Click the **Charms menu** > **Settings**  >  to adjust the control bar.



Using the Sound Recorder

The procedures to record sound using the Windows Recorder are described below.

- 1 Connect a microphone to the microphone jack. You can also use the internal MIC.
- 2 Right-click over the **Volume** icon  on the taskbar and select **Recording Device**.
- 3 Check if the microphone is set as the default recording device. If this is the case, it is already set as the default device. If not, right-click over the microphone and select **Set default**.
- 4 Right-click over the **Charms menu** > **Start**  to click **All Apps**  > **Sound Recorder**. Then press **Start Recording** to record.



Adjusting the Volume

Using SoundAlive (Optional)

The SoundAlive function enables you to experience more stereophonic sound using stereo speakers.



- SoundAlive is only supported in Windows 8.
- The software programs provider may vary, depending on your computer model.
- In addition, some pictures may differ from actual product depending on the computer model and software version.

1 Right-click over the **Volume**  in the taskbar on the Desktop and click **Play Device**.

(Alternatively, click the **Charms menu** on the **Desktop** > **Settings**  > **Control Panel** > **Hardware and Sound** > **Sound**.)

2 Right-click over the **Speakers** and select **Properties**.

3 Select the **SoundAlive** tab and select one of the modes.