

Digital Photo Frame

User manual

800P
1000P

The images and screen shots used in this manual are from the 800P.

Click

- Contents
- Safety precautions
- Get started
- Play multimedia
- Browse and manage multimedia
- Use the Bluetooth wireless feature
- Customize settings
- Appendix
- Index

Read this manual thoroughly for proper use and maintenance instructions.

Instructional icons

Before you start, familiarize yourself with the icons you will see in this manual:



Caution - situations that could cause damage to your device or other equipment



Note - notes, usage tips, or additional information

©2009 SAMSUNG ELECTRONICS CO., LTD.

- It is strictly forbidden to copy or distribute the contents of this manual without permission from SAMSUNG ELECTRONICS CO., LTD
- Product specifications or contents of this manual may be changed without prior notice due to upgrade of product functions.

Contents

Safety precautions 3

Get started 6

What's in the box	6
Get to know your frame	7
Set up your frame	10
Connect the adapter and turn the power on	10
Customize basic settings	11
Get to know the Main menu	12
View the time and date	13
Connect external memory devices	14
Select a memory location	15
Connect to a PC	16
Transfer files from a PC	17

Play multimedia 19

Play a slideshow	19
Play videos	24
Play music	26

Browse and manage multimedia 28

Browse files	28
Manage files	29

Use the Bluetooth wireless feature.. 32

Find and pair with other Bluetooth-enabled devices	32
Get data using the Bluetooth wireless feature	33
Use Bluetooth menus	34
Information for using Bluetooth	35

Customize settings..... 36

Adjust slideshow effects	36
Set the time and date	36
Set and use alarms	37
Customize general settings	39
Customize Bluetooth settings	40
Update or reset the frame	41

Appendix..... 42

Use as a PC mini-monitor	42
Use the PhotoActive program	43
Update Firmware	44
Troubleshooting	45
Specifications	47
Correct disposal of the frame	48
Contact information of Samsung Worldwide	49
Software License	50
Index	51

Safety precautions

WARNING:

- TO PREVENT ELECTRIC SHOCK, DO NOT OPEN OR REMOVE THE COVER OR BACK OF THE FRAME. THERE ARE NO USER-SERVICEABLE PARTS INSIDE. ALLOW ONLY QUALIFIED PERSONNEL TO SERVICE THIS FRAME.
 - TO PREVENT FIRE, KEEP THIS FRAME AWAY FROM ALL OPEN FLAMES, SUCH AS CANDLES, AT ALL TIMES.
-
- The slots and openings in the frame provide needed ventilation. To ensure reliable operation and prevent overheating, these openings must not be blocked or covered:
 - Do not cover the slots or openings.
 - Do not block the slots or openings by placing the frame on soft surfaces, such as beds, sofas, or rugs.
 - Do not place the frame in an enclosed space, such as a bookcase or cabinet, without proper ventilation.
 - Do not place the frame near or on sources of heat, such as radiators, or in direct sunlight.
 - Do not allow the frame to come in contact with water. Do not place the frame near sources of water, such as bathtubs or sinks, or where water or other liquids may splash or drip on the frame. If the frame gets wet, unplug the frame immediately and contact the dealer or an authorized service center.
 - Do not overload wall outlets, extension cords, or adaptors beyond their intended capacity, as this may result in fire or electrical shock.
 - Route all power supply cords away from traffic areas and other objects so that they are not likely to be stepped on or pinched by items placed on or against them. Ensure that wires are not twisted or pinched at plug ends or adapter connections.
 - During electrical storms or when the frame will be unattended and unused for extended periods of time, unplug the frame from the wall. This will prevent damage to the frame from electrical surges.
 - Before connecting the power cord, make sure that the voltage designation of the frame corresponds to the local electrical supply.

Safety precautions

- Never insert any metal objects into the open parts of this frame, as this may result in electrical shock. Ensure that the power cord is completely plugged in when using this frame. Grasp the plug firmly when removing the power cord and never touch the power cord with wet hands.
- If you notice any unusual operation, such as unusual sounds or burning smells coming from the frame, unplug it immediately and contact the dealer or an authorized service center.
- It is not recommended to install the frame in a location where it will be exposed to heavy dust, high or low temperatures, high humidity, or chemical substances or where it operates continuously.
- Use only properly grounded plugs and outlets when connecting this frame. Improper grounding may cause electrical shock or damage to equipment.
- Keep this frame and all accessories out of the reach of children.
- Do not install the frame in unstable locations, such as improperly mounted shelves, angled surfaces, or where the frame may be exposed to vibration.
- Do not drop the frame or subject the frame to any strong impacts. If the frame is damaged, disconnect the power cord and contact a dealer or an authorized service center.
- Always unplug the power cord when cleaning the frame. Use only a soft, dry cloth to wipe frame. Do not expose the frame to any chemicals, such as waxes, benzene, alcohol, thinners, insecticides, air fresheners, lubricants, or detergents, as these may damage the frame's finish and void your warranty.
- Clean the product with a soft dry cloth.
 - Avoid cleaning the product with a flammable substance such as benzene or thinner or with a wet cloth. This may result in damage to the product.
 - Avoid scratching the screen with your fingernails or a sharp object.
 - Avoid cleaning the product by spraying water onto it. If water enters the product, it may result in fire, electric shock or malfunction.
 - Avoid using a supersonic humidifier near the product. It may result in a white stain on the surface of the product.

Safety precautions



Correct disposal of this product

(Waste Electrical & Electronic Equipment)



(Applicable in the European Union and other European countries with separate collection systems)

This marking on the product, accessories or literature indicates that the product and its electronic accessories (e.g. charger, headset, USB cable) should not be disposed of with other household waste at the end of their working life.

To prevent possible harm to the environment or human health from uncontrolled waste disposal, please separate these items from other types of waste and recycle them responsibly to promote the sustainable reuse of material resources.

Household users should contact either the retailer where they purchased this product, or their local government office, for details of where and how they can take these items for environmentally safe recycling.

Business users should contact their supplier and check the terms and conditions of the purchase contract. This product and its electronic accessories should not be mixed with other commercial wastes for disposal.



Correct disposal of batteries in this product

(Applicable in the European Union and other European countries with separate battery return systems.)

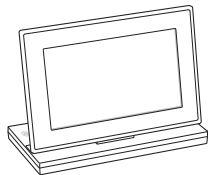
This marking on the battery, manual or packaging indicates that the batteries in this product should not be disposed of with other household waste at the end of their working life. Where marked, the chemical symbols Hg, Cd or Pb indicate that the battery contains mercury, cadmium or lead above the reference levels in EC Directive 2006/66. If batteries are not properly disposed of, these substances can cause harm to human health or the environment.

To protect natural resources and to promote material reuse, please separate batteries from other types of waste and recycle them through your local, free battery return system.

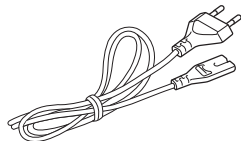
Get started



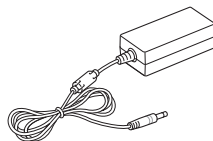
What's in the box



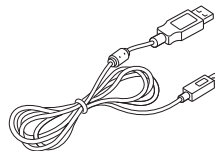
Digital frame



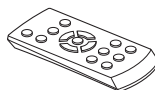
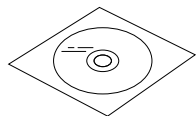
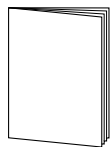
Power cable*



Adapter



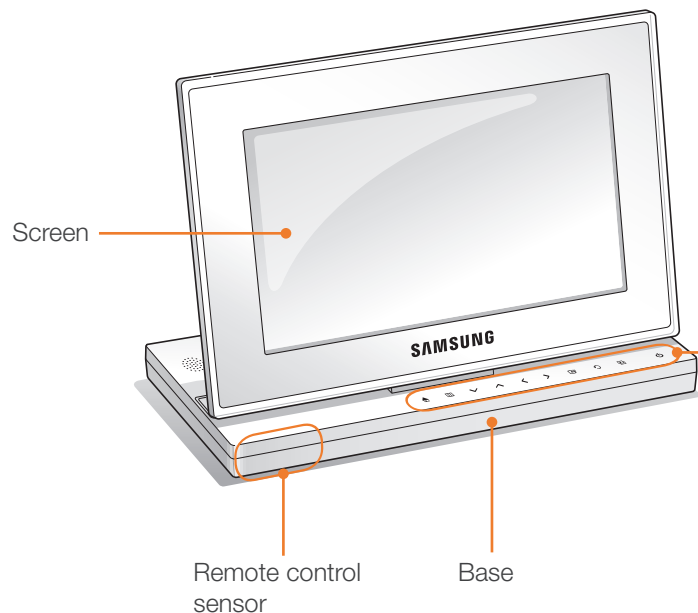
USB cable





Get to know your frame

The front of your frame



Touch button*	Description
	Turn the frame on; Turn the frame off (touch and hold)
	Access the Main menu
	Access menus
	Scroll through menus or items (up/down/left/right)
	Select menus or items; Perform selected functions
	Return to the previous level
	Play a slideshow in an any screen; Change the view mode during a slideshow

* The descriptions in this manual are based on the touch button. Please read this manual carefully and use correctly.



When using the touch buttons

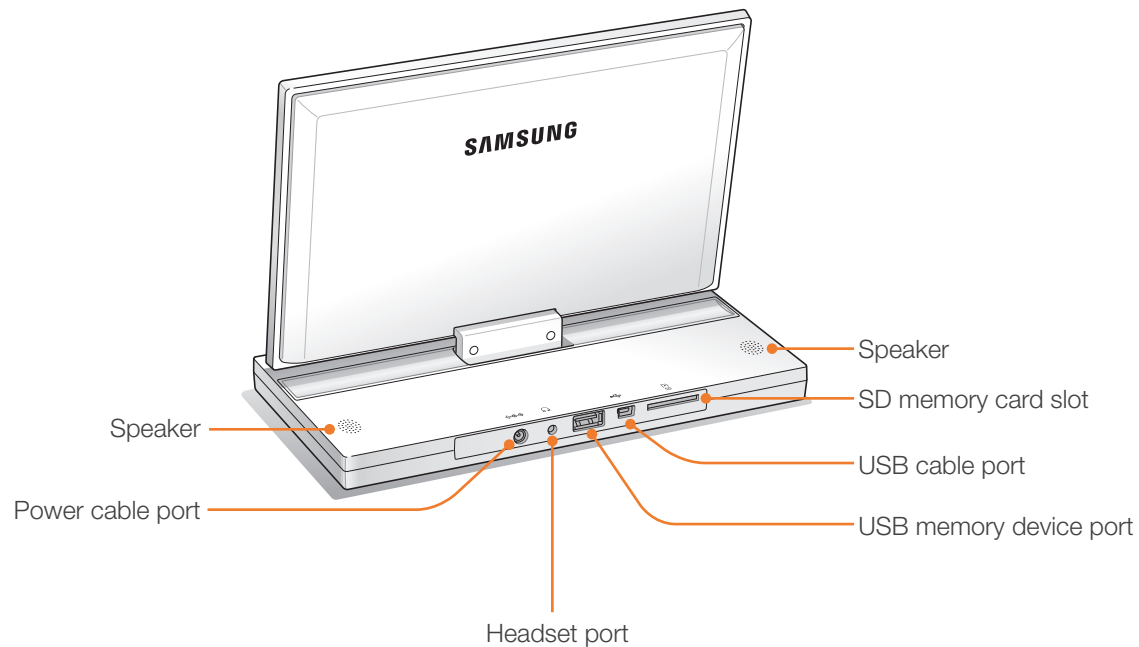
- Operate the touch buttons only with your fingers. Make sure your hands are clean and dry when using the touch buttons.
- Lightly touch the button that corresponds to the desired function.
- The touch sensor may not work properly when wet or in humid places.
- When the touch buttons disappear, lightly touch the touch panel to make the buttons visible.



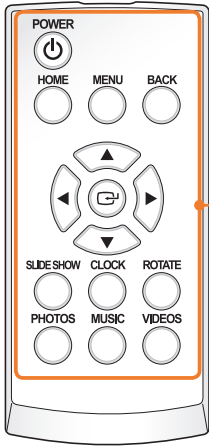
Get started

Get to know your frame (continued)

The rear of your frame

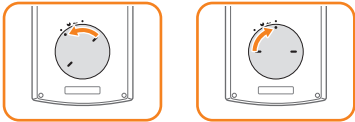


Remote control



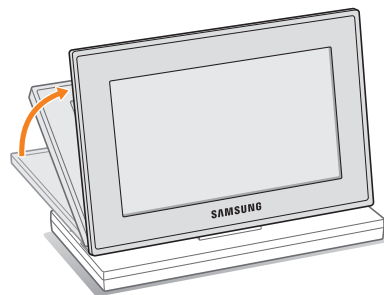
Button	Description
	Turn the frame on or off
	Access the Main menu
	Access menus
	Return to the previous level
	Scroll through menus or items (up/down/left/right)
	Select menus or items
	Play a slideshow in any screen; Change the view mode during a slideshow
	View the time and date
	Rotate a photo during a slideshow
	Access the photo list screen
	Access the music list screen
	Access the video list screen

- Be sure to point the remote control to the remote control sensor on the frame (p. 7).
- Open the battery cover by turning to the left, replace the battery, and close the battery cover by turning to the right.





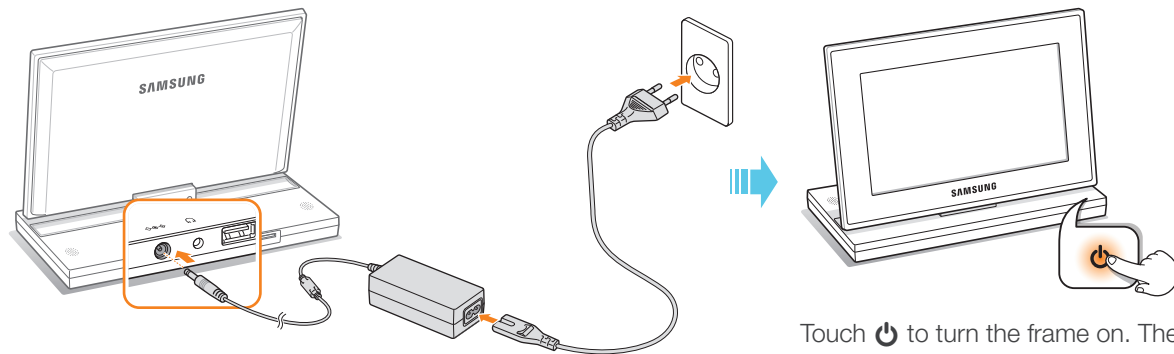
Set up your frame






Do not put too much pressure on the frame or force the screen to rotate in the wrong direction, as this may damage the frame.



Connect the adapter and turn the power on



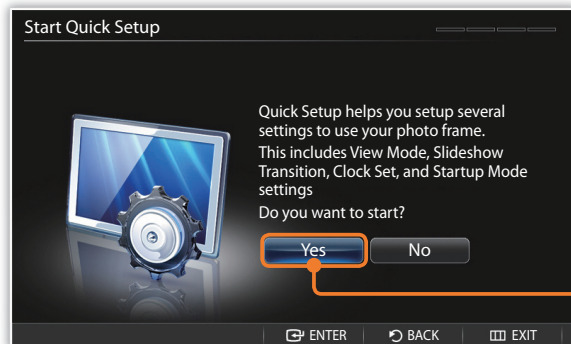
The shape of the plug may differ depending on your region.


Touch  to turn the frame on. The light on  will turn and the Main menu will appear.
To turn the frame off, touch and hold .



Customize basic settings

When you turn the frame on for the first time, the Quick setup screen appears. Select a language and customize the basic settings of your frame.



- 1 Scroll to your language and touch .
- 2 Select **Yes** to start the setup wizard.
- 3 Follow the on-screen instructions to customize your frame according to your preferences.

Setting	Description
View Mode	Select a view mode for a slideshow (p. 20)
Slideshow Transition	Select a transition effect for a slideshow (p. 22)
Clock Set	Set the current time and date (p. 13)
Startup Mode	Select a mode to activate when the frame turns on (p. 39)

- 4 When you complete the setup, select **Yes** to view the product guide.
- 5 Review the basic usage instructions for your frame, and then select **Done**.




Get to know the Main menu

From the Main menu screen, you can access the following menus.



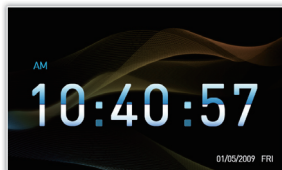
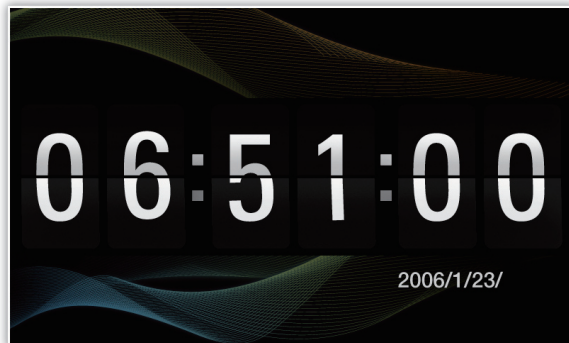
Menu	Description
Photos	Browse photos stored in the internal memory or on an external memory device and change options (p. 19)
Music	Listen to music stored in the internal memory or on an external memory device and change options (p. 26)
Videos	View videos stored in the internal memory or on an external memory device and change options (p. 24)
Bluetooth	Use the Bluetooth wireless feature to connect to other wireless devices (p. 32)
Clock	View the current time and date (p. 13)
Mini Monitor	Use the frame as a supplementary monitor for your PC (p. 42)
Settings	Customize settings (p. 36)

- You can set other functions to be activated instead of the Main menu when you turn the frame on (Startup Mode p. 39).
- While you are using other functions or the screensaver is active, touch  to access the Main menu screen.

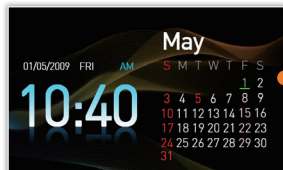


View the time and date

Check the current time and date or customize clock settings.



▲ Clock Only



▲ Clock & Calendar

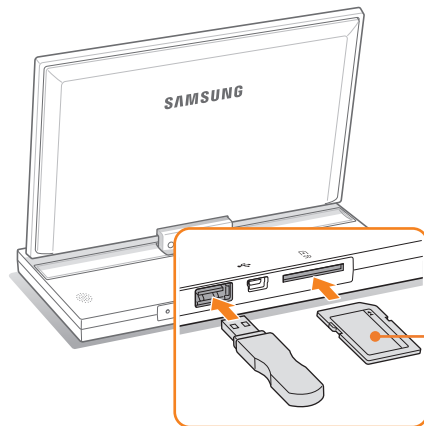
- 1 From the Main menu screen, scroll to **Clock** and touch .
 - The current time and date will display.
- 2 Touch and select **Settings**.
- 3 Scroll to **Clock** and touch .
- 4 Scroll to one of the following options and touch .
 - For **Clock Set**, touch or to select the option you want and touch or to set the value.

Option	Description
Clock Set	Set the current time and date
Date Format	Select how dates display (YYYY.MM.DD, MM.DD.YYYY, DD.MM.YYYY)
Time Format	Select how time displays (12 Hours, 24 Hours)
Clock Type	Select the clock type (Clock Only, Clock & Calendar)

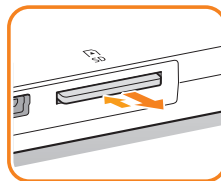


Connect external memory devices

You can connect USB memory devices or SD memory cards to the frame. The frame supports FAT16 and FAT32 file format systems for external memory devices.



Insert an SD memory card with the metal contacts facing down. Push the card in until it locks in place.



To remove the SD memory card, push it gently until it disengages from the frame.



- If you connect an external memory device while the power is on, a pop-up window will appear. To start a slideshow of photos stored in the external memory device, select **Slideshow**.
- Recommended memory capacities for different types of memory cards:

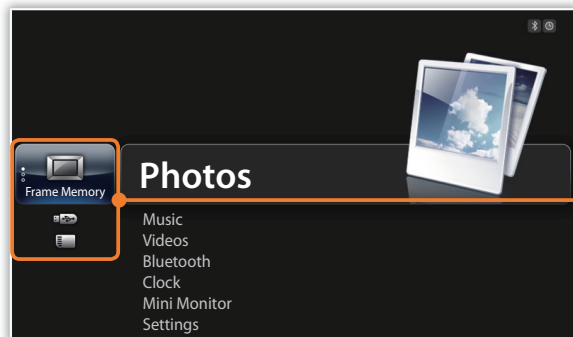
SD	Up to 2 GB
microSD	Up to 2 GB
miniSD	Up to 2 GB
SDHC	Up to 32 GB
microSDHC	Up to 8 GB
miniSDHC	Up to 4 GB
USB	Up to 32 GB






Select a memory location

When there is an external memory device (SD memory card or USB memory device) connected, you can select the source of files.



- 1 From the Main menu screen, scroll to the memory location list.
- 2 Scroll to one of the following memory locations and touch .

Memory location	Description
Frame Memory	Internal memory
SD Card	SD memory card (external)
USB	USB memory device (external)



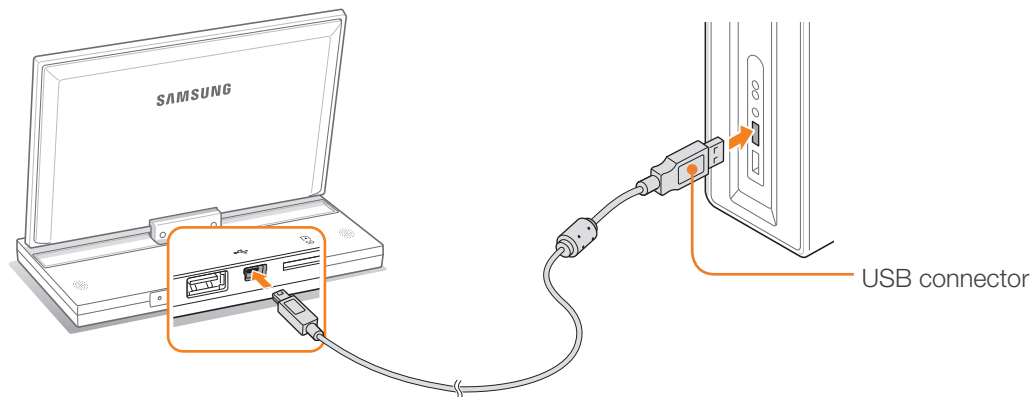
You can also change the memory location while browsing photos by touching  and selecting **Select Storage Device** (p. 29).

Get started



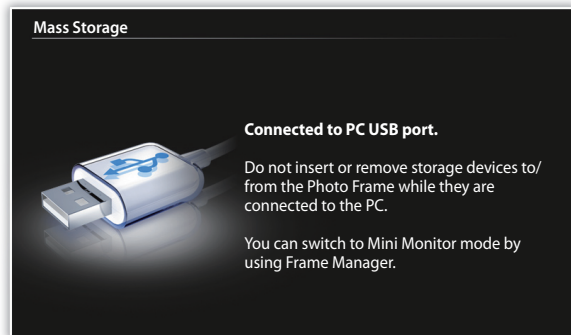
Connect to a PC

You can transfer files (p. 17) or use the frame as a mini-monitor by connecting it to a PC (p. 42).
Connect the smaller end of the USB cable to the frame and the larger end to the USB port of a PC.







Transfer files from a PC



- Some files are embedded on the frame by default. When there is not enough memory, delete these stock files.
- If your photos are large, they will consume more memory and the preview will play slowly. Change the photo resolution to 800 X 480 (for '800P') or 1024 X 600 (for '1000P'). Or set the frame to copy and automatically resize your photos (Frame Memory Copy p. 39).

To transfer files from a PC

- 1 Connect the frame to a PC with the supplied USB cable (p. 16).
 When the frame is turned off, connect it to the PC first, and then turn it on.
- 2 Select **Mass Storage**.
 - When connected, 'Mass Storage' will appear on the screen and a pop-up window will appear on the PC.
 -  If you connect the frame to a PC while using it as a mini-monitor (p. 42), you need to switch to Mass Storage mode by using the Frame Manager program. For more information, refer to the user manual of the Frame Manager.
- 3 Open a folder to view files.
 - The removable disk drive will appear as '800P' or '1000P' on the PC. Open the drive for the corresponding model in My Computer and copy your photos.
- 4 Copy files from the PC to the frame or vice versa.



Get started

Transfer files from a PC (continued)

To disconnect the frame from a PC

Make sure to end the connection properly to prevent damage to the frame or your data.

- 1 Click  on the Windows Taskbar.



- 2 Click the pop-up message.



- 3 Disconnect the USB cable only when the message says that it is safe to remove the hardware.



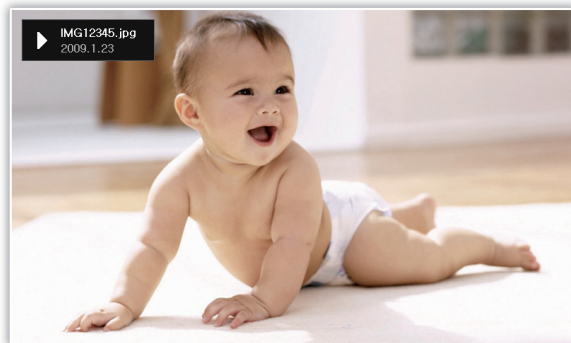
- Do not disconnect the USB cable while the files are being copied, as this could result in loss of data or damage to the frame.
- The connection will not end if you have frame files open on the PC. Close all frame files and try again.



Play multimedia



Play a slideshow




1 From the Main menu screen, select a memory location (**Frame Memory**, **SD Card**, or **USB**).








2 Scroll to **Photos** and touch .

3 Scroll to a file and touch  or  to play a slideshow.



To play a slideshow with specific photos, touch  and select **Select Multiple Files** (p. 29).

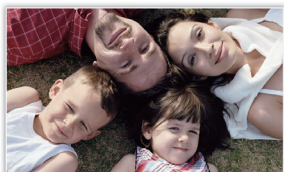
4 Control playback using the following buttons:

Touch buttons	Description
	Access the Main menu
	Access the slideshow menu
	Adjust the volume of the background music
	View the previous or next photo
	Pause or resume the slideshow
	Return to the previous level
	Change the view mode

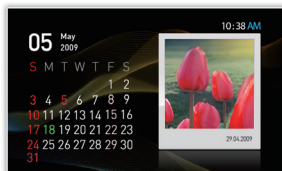
Play a slideshow (continued)



▲ Photo Only



▲ Photo & Clock



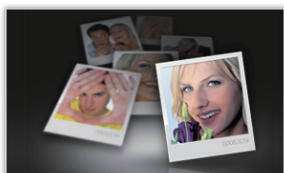
▲ Photo & Calendar



▲ Multiview 1




▲ Multiview 2




▲ Multiview 3

Change the view mode

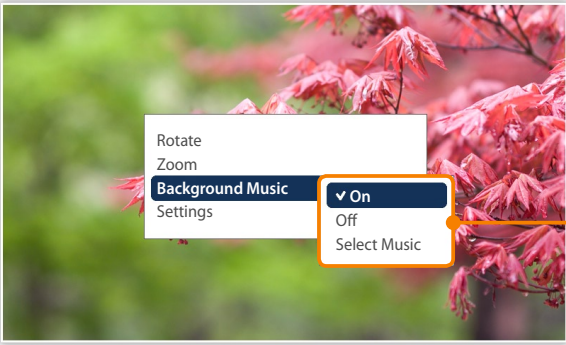
Display a clock or calendar during a slideshow or multiple photos on one screen during a slideshow.

Touch  repeatedly during a slideshow to change the view mode.

- Each time you touch , the view mode changes (**Photo Only** → **Photo & Clock** → **Photo & Calendar** → **Multiview 1** → **Multiview 2** → **Multiview 3**).





- You can also change the view mode by accessing **View Mode** in **Settings** → **Photos** (p. 23).
- Set the current time and date before displaying the clock or calendar (p. 36).
- You can view the previous or next photo by touching **<** or **>** during a slide show.







Use slideshow menus




Control a slideshow and adjust the slideshow settings.

- 1 Touch  during a slideshow.
- 2 Scroll to one of the following menus and touch .

Option	Description
Rotate	Rotate a photo (Original , 90°, -90°, 180°)
Zoom	Enlarge in a photo (x1 , x2 , x4)
Background Music	Turn the background music on or off
Settings	Access the Settings menu (p. 22)

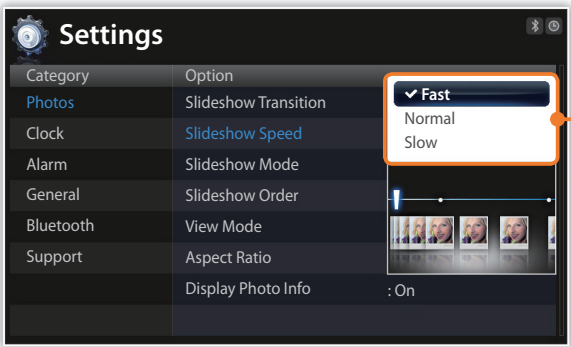


- You can rotate or zoom a photo only in **Photo Only** and **Photo & Clock** modes.
- When you zoom a photo, you can move around the photo by touching , , , or .

- 3 When you are finished, touch .
- When you touch  in the **Settings** menu, the Main menu appears. To play the slideshow, touch .

Play multimedia

Play a slideshow (continued)



Select slideshow effects

Adjust the transition effect, speed, play mode, or order of photos for a slideshow.

- 1 Touch during a slideshow.
- 2 Select **Settings**.
- 3 Scroll to **Photos** and touch .

You can also select slideshow effects by accessing **Photos** in **Settings**.

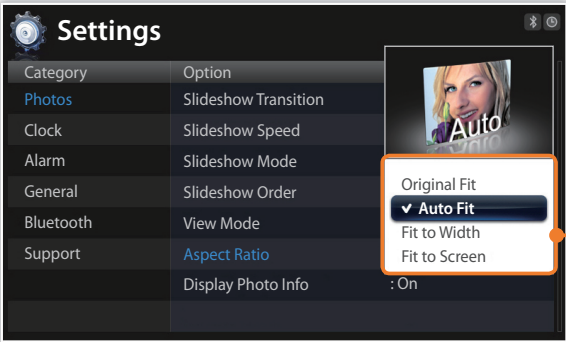
- 4 Scroll to one of the following options and touch .

Option	Description
Slideshow Transition	Select a transition effect (No Effect, Fade, Blinds, Cross Comb, Checkerboard, Slide, Wipe, Silk, Wheel, Circle, Box In/Out, Diamond, Plus, Uncover, Push, Stairs, Random)
Slideshow Speed	Select a slideshow speed (Fast, Normal, Slow)
Slideshow Mode	<ul style="list-style-type: none">• All photos: Play all photos in the order of file names• Photos in folder: Play all photos in the selected folder in the order of file names• One photo: Repeat the selected photo




Play multimedia

Play a slideshow (continued)



Option	Description
Slideshow Order	<ul style="list-style-type: none">• Normal: Play photos in the order of file names• Shuffle: Play photos in a random order
View Mode	Change the view mode (p. 20)
Aspect Ratio	<ul style="list-style-type: none">• Original Fit: Display photos in the original sizes. When a photo is larger than the screen, it will be adjusted to fit the screen in the same ratio• Auto Fit: Resize photos to fit the screen in the same ratio (some parts of the photo may not appear)• Fit to Width: Resize photos to fit the screen width• Fit to Screen: Resize photos to fill the screen
Display Photo Info	Set the slideshow to display details of each photo

5 Touch  to play the slideshow.