



Wireless Hand PC

NEXiO

(Samsung S160)

Quick Reference Guide



SAMSUNG DIGITall

everyone's invited

NEXiO

Samsung S160

NEXiO

Powerful Mobile Office

- Pocket Internet Explorer 5.5
- Pocket Office(Word, Spreadsheet, PPT)
- PIMS compatible w/MS Outlook
- Smart Presentation

Full Internet Capability

- 800*480 WVGA
 - : No horizontal scrolling !
- JVM, Flash Player built-in
- 802.11b(11Mbps) built-in

Highest Performance

- Intel 400MHz CPU
- 64MB FROM, 128MB RAM
- WLAN built-in

Various Expandability

- standard USB slot
- CF II slot
 - : Camera, Memory, WAN module
- PCMCIA adapter(optional)



Big & vivid Wide screen

- 5inch wide screen LCD
- Clear & Bright Transflective LCD
- Low power consumption LCD

Enforced Battery Solution

- Li-Polymer rechargeable battery
: 3hrs for continuous Internet use
- 2nd Li-Polymer option Battery pack
: 3hrs talking time

Digital Entertainments

- MP3, MPEG Player
- e-Book Viewer
- Games
- Camera & Image viewer

Outstanding Design

- Slim & Sexy
: 154*91*13.4, 250g
- Homogeneous design
: keyboard cover, 2nd battery



Unpacking

Your package contains the following items.



NEXiO (Samsung S160)



Stylus



Ear-microphone



AC Adapter



Communication Cable



**External Display
Cable**



Cradle



Leather Cover



Stand



NEXiO CD



Quick Reference Guide



Accessory Guide



**Handwriting
Guide**

NEXiO (Samsung S160)

Nickname of Samsung S160

Stylus

Stylus that is appropriate for operating NEXiO. Kept in stylus slot on the right side.

Ear-microphone

Listen to music and record sound

AC Adapter

Supply DC power and charge battery

Communication Cable

Connect NEXiO to computer and transfer data between two devices

External Display Cable

Connect NEXiO to External Display and enable to view NEXiO screen through external display device (ex : Monitor, Project)

Cradle

Enable to use NEXiO at more comfortable angle and charge external battery

Leather Cover

Protect LCD screen

Stand

Inserted in the back side and stand NEXiO. Kept in CF card slot in the right side.

NEXiO CD

Install program in NEXiO from computer or read online manual

Quick Reference Guide

Explain basic operation skill

Accessory Guide

Show Accessory and Option items that can be purchased separately

Handwriting Guide

Show handwriting method

NEXiO Overview

NEXiO Overview

Front View



Indicator

Show NEXiO operation status

Microphone

Arrow Key

Move cursor(item) to up/down/left/right

Enter Key

Run selected program

Hot Key

Short cut to run program

Speaker

Note

Hot Key

Launcher	Run NEXiO Programs
Backlight	Turn on/off backlight
REC	Run recorder program

Indicator

Network	Show wireless LAN connection status – On after 2 blinking : connection trial. network icon is activated if connection is successful – On: connected to network – Off : not connected to network
Reminder	Blinks at set-up reminder time
Power	Show internal battery charge status when connected to adapter – Green: Charging complete – Red: Charging proceeding – Red Blinker: Low Battery

Rear View



Reset Hole

Recover NEXiO when it does not operate normally
(refer "Resetting")

External Battery Connector

Protection Hole

Fix External Battery or stick stand in to use NEXiO in a more comfortable angle

Left View



Power Button

Turn on/off NEXiO

Hold Button

Only power button is activated in HOLD status. Touch screen is activated when power is on.

Ear-microphone Port

AC Adapter Port

Right View



Stylus Slot

Keep Stylus

PCMCIA Adapter Port

Insert PCMCIA Adapter (option)

CF Card Slot

Insert CF Card

Note Since PCMCIA Adapter uses both PCMCIA Adapter Port and CF Card Slot, you cannot use CF Card when you are already using PCMCIA Adapter.

Bottom View



Communication Port

Connect to Computer, External Display, or Cradle

(refer to "Connecting to Computer", "Using External Display Device", "Using Cradle")

External Keyboard Connector**Protection Hole**

Fix Leather Cover or External Keyboard

Cradle overview

Front



Indicator

Show battery charge status when connected to adapter

External Battery room

Attach and charge External Battery

Dummy

External Battery Connector

NEXiO Connector

Connect to Communication Port of NEXiO

Note

Indicator

NEXiO internal Battery	– Green: Charging complete – Red: Charging proceeding
External Battery	

* When you charge NEXiO internal Battery and External Battery at the same time, external battery starts being charged after internal battery is fully charged.

Back



Communication Port

Connect to Computer or External Display

(refer to "Connecting to Computer", "Using External Display Device", "Using Cradle")

AC Adapter Port

Stylus/Pen Stand

Ear-microphone overview



Ear-phone

Microphone

Volume control dial

Connecting NEXiO with peripherals

This part explains connecting NEXiO with peripherals such as AC Adapter, Cradle and using.

NEXiO power is supplied with AC Adapter or internal battery. Battery should be sufficiently charged with AC adapter to be in use.

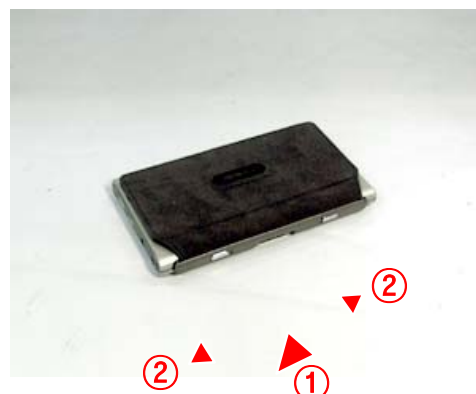
Note Sufficiently charge internal battery.

It takes 2 1/2 hours to fully charge internal battery. If you want to charge quickly, charge 2 hours and you will be able to use.

Connecting AC Adapter

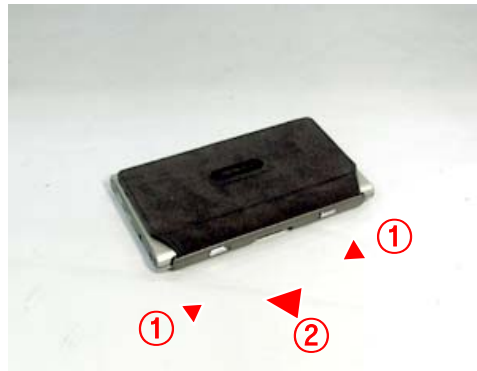


Attaching Cover

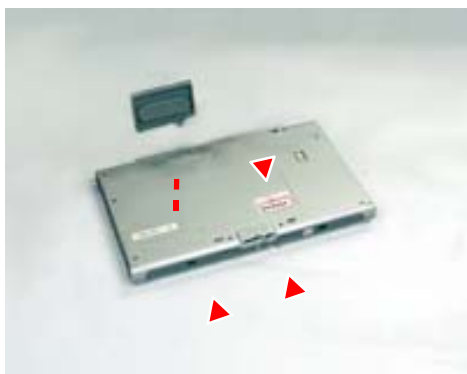


Fit cover to 4 protection holes in the NEXiO bottom. While pressing cover against NEXiO, slide two lock buttons to arrow direction and fix cover.

To detach cover from NEXiO, slide two lock buttons in the opposite direction of arrow and pull cover out.

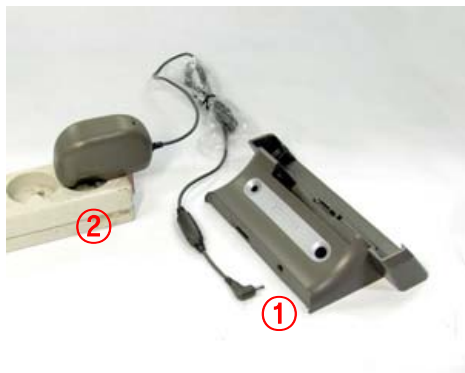


Attaching Stand



Fit stand to one of 4 protection holes in the rear. You can use NEXiO in a more comfortable angle.

Fitting to Cradle



connecting adapter



fitting NEXiO to cradle

Note You cannot use fit NEXiO to cradle when AC adapter is connected to NEXiO. To use cradle, connect adapter to the back side of cradle.

Connecting to Computer

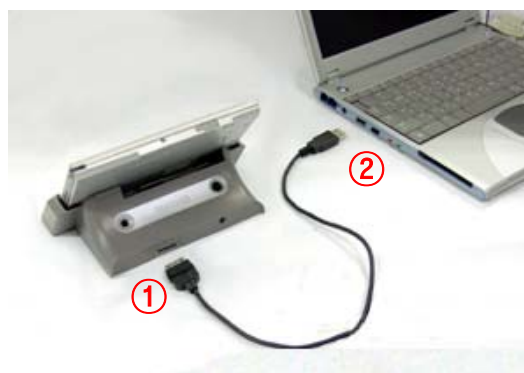
You can transfer data and install program in NEXiO by connecting Communication Port of NEXiO to a Computer.

(refer to "Connecting to computer")

Connect Communication Port of NEXiO and USB Port of computer with Communication Cable.



directly connecting with NEXiO



connecting through Cradle

Connecting External Display Device

You can view NEXiO screen through external display device and present reports by connecting External Display Device such as Monitor and Projection. (refer to "Connecting external display device")

Connect Communication Port of NEXiO and Monitor Cable with External Display Cable.



directly connecting with NEXiO



connecting through Cradle

Basic uses of NEXiO

Turning on/off NEXiO

Note When you are first using NEXiO, you have to charge internal battery sufficiently with AC Adapter before using. (Refer to "Charging battery")

Press power button on the left side of NEXiO, then NEXiO will be turned on.



When you turn on NEXiO for the first time, Stylus calibration setting screen will appear.

Stylus calibration setting

When you turn on NEXiO for the first time, + mark will be shown on Stylus calibration setting screen. Tap on + mark to correspond stylus and the location on screen.

1. Follow instructions on screen and tap on the + marks with stylus. + marks disappears after tapping 5 times.



2. Tap screen once, then setting will be completed and NEXiO screen appears.

Turning off NEXiO

Press power button once more, then NEXiO will be turned off.

Or you can tap Start > Suspend on taskbar with stylus.



NEXiO runs on Flash memory, so when you turn off and on again, last screen status before turning off will be shown.

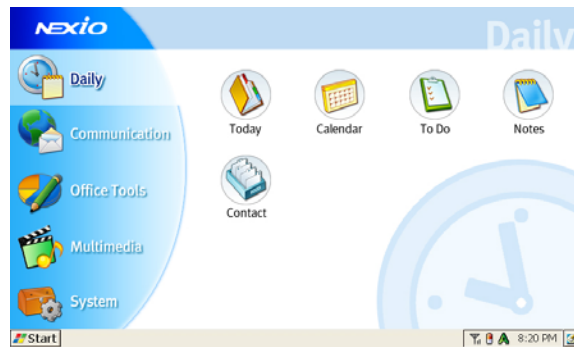
Note Tap is softly pressing LCD screen with stylus. Refer to "Using Stylus" for more information.

NEXiO is automatically turned off when no action is occurred in set time. To change setting, refer to "...".

Learning NEXiO Program

When you turn on NEXiO and finish Stylus calibration setting, NEXiO Program appears. NEXiO Program is a launch program that lets you run programs easily.

You will first learn about components on screen..



Task bar List of programs that are currently running and s
Start Menu Button, Task bar Icon are shown.

Start You can run NEXiO Programs or see help.

Task bar icon Time and Task icon are shown.

Background icon You can see Background. Press once
more go back to former view.



(Background)

Program Icon: Press icon twice to run
corresponding program.

Task bar icon

Software keyboard Icon Software Keyboard which lets you
to input letters will be shown

Power Shows internal battery charge status when adapter
is connected.

Charging is completed

Charging is proceeding

W-LAN Activate Wireless Lan

Network On connected to network

Off not connected to network

Comm Shows if NEXiO is connected with computer

Note To see basic user guide about Windows CE, which is

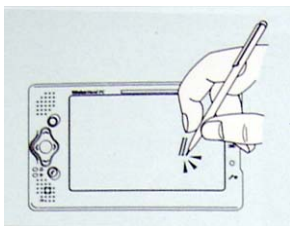
operating system of NEXiO, refer to help on Start > Help > Windows CE Basics.

For more information on how to use NEXiO Programs, refer to "Using NEXiO Programs".

Using Stylus

Stylus is a screen touch pen to operate NEXiO, and corresponds to mouse in computers. In this section, you will learn how to input using stylus.

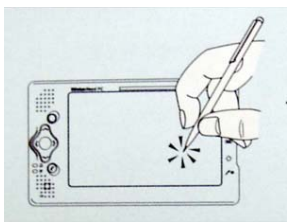
Note Always use stylus to input data into screen. LCD screen will be damaged if you use sharp tools, so be careful.



Tap

Pressing screen one time. Corresponds to clicking left button in mouse.

You can select item or run program by tapping.

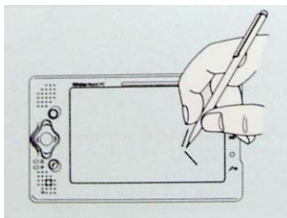


Double Tap

Pressing screen two times continuously.

Corresponds to double clicking left button in mouse.

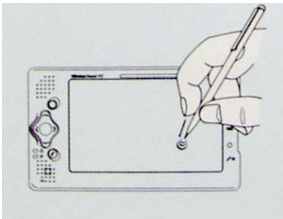
You can run some programs by double tapping.



Drag

Move to intended point while you are pressing screen.

You can select an area on screen or select multiple items at once by dragging.



Tap and Hold

Press screen for about 2 seconds.

Corresponds to clicking right button in mouse

You can see additional functions of the selected item.

If you want to use Tap and Hold function, you have to change setting. (Refer to "Mouse right button function")

Note If stylus is not operating normally, recalibrate. (Refer to "Recalibrating")

Entering Text

There are several ways to enter text in NEXiO.

- Using Software Keyboard which is internally embedded in NEXiO
- Using External Keyboard which is an option (refer to Accessory Guide)

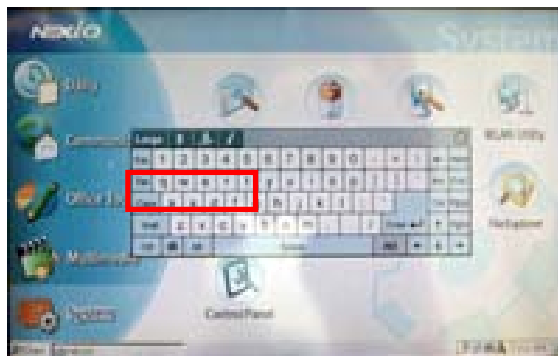
Software Keyboard is provided in NEXiO. so let's learn how to use Software Keyboard with stylus.

Using Software Keyboard

Software Keyboard is a keyboard shown on the screen. Software Keyboard is made up of Keyboard Mode, Hand Writing Mode, and Internet Mode.

Tap Keyboard (그림) Icon on the taskbar, then Software Keyboard will appear.

When you first run Keyboard, Small Size Keyboard in Keyboard Mode will be shown. When you change keyboard mode and run keyboard again, recently changed mode will be shown.



(위치 지시선)



Software Keyboard
Keyboard Mode
Hand Writing Mode
Internet Mode

Retting(Normalizing NEXiO)

You can reset to normalize NEXiO when NEXiO is not operating properly.

There are two ways of resetting : Soft reset, which is just shutting down all running programs, and hard reset, which is initializing NEXiO to the state when you first bought it.

Soft Reset

When you soft reset, all running programs are shut down and NEXiO is turned on again.

To soft reset, press reset hole in the rear side with stylus.



Hard Reset

When NEXiO does not operate normally even after soft resetting, hard reset. When you hard reset, NEXiO is initialized to the state when you first bought it.

Note When you hard reset, data and password are deleted. Reter to "Backup and restore" to save data before hard reset.

To hard reset, press reset hole in the rear side with stylus while you are pressing power button.



power button + reset hole

Note After hard resetting, Stylus calibration setting screen will appear. Refer to stylus calibration section of "Turning on/off NEXiO" to finish setting.

Leaning about NEXiO Programs

NEXiO Programs is a launcher program that lets users to use programs in NEXiO easily.

In this chapter, you will learn about how to use NEXiO Program and what programs are provided in NEXiO.

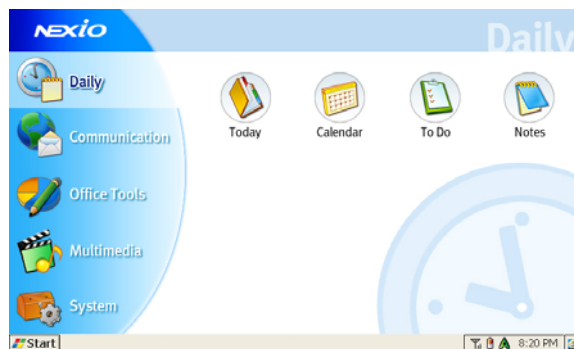
Note Refer to online manual for more specific guide on using programs.

Programs provided with NEXiO can be added or deleted afterward and may be different from this guide.

Running NEXiO Programs

When you turn on NEXiO, NEXiO Programs will be shown on the screen.

NEXiO Programs screen is made up of menu and list of programs.



-menu	classified in 5 categories
-program	programs that comes under each category are
shown	

Note If NEXiO programs is not automatically run, press NEXiO button on the front side of NEXiO.



Or tap Start > Programs > NEXiO from the taskbar,
or double tap NEXiO () icon on the background.

Notices

No part of this publication may be reproduced, stored in a retrieval system, or transmitted, in any form or by any means, mechanical photocopying, recording or otherwise, without the prior written permission of the manufacturer.

The information within this manual is subject to change without notice.

The manufacturer shall not be held liable for technical or editorial errors or omissions contained in herein; nor for incidental or consequential damages resulting from the furnishing, performance or use of this material.

Microsoft Windows is a registered trademark of the Microsoft Corporation.

Product names mentioned herein are for identification purposes only, and may be trademarks and/or registered trademarks of their respective companies.

Important Safety Information

Safety Instructions

Your system is designed and tested to meet the latest standards for safety of information technology equipment. However, to ensure safe use of this product, it is important that the safety instructions marked on the product and in the documentation are followed.

Always follow these instructions to help guard against personal injury and damage to your system.

Setting Up your System

Replacement Parts and Accessories

Use only replacement parts and accessories recommended by manufacturer.

To reduce the risk of fire, use only No. 26 AWG or larger telecommunications line cord.

Do not use this product in areas classified as hazardous. Such areas include patient care areas of medical and dental facilities, oxygen rich environments, or industrial areas.

Battery Disposal

Do not put rechargeable batteries or products powered by non-removable rechargeable batteries in the garbage.

Contact the Samsung Helpline for information on how to dispose of batteries that you cannot use or recharge any longer.

Follow all local regulations when disposing of old batteries.

Power Cord Requirements

The power cord set (wall plug, cable and AC adapter plug) you received with your computer meets the requirements for use in the country where you purchased your equipment.

Power cord sets for use in other countries must meet the requirements of the country where you use the computer. For more information on power cord set requirements, contact your authorized dealer, reseller, or service provider.

General Requirements

The requirements listed below are applicable to all countries:

- The length of the power cord set must be at least 6.00 feet (1.8m) and a maximum of 9.75 feet (3.0m).
- All power cord sets must be approved by an acceptable accredited agency responsible for evaluation in the country where the power cord set will be used.
- The power cord set must have a minimum current capacity of 7 A and a nominal voltage rating of 125 or 250 volts AC, as required by each country's power system.
- The appliance coupler must meet the mechanical configuration of an EN 60 320/IEC 320 Standard Sheet C13 connector, for mating with appliance inlet on the computer.

Regulatory Compliance Statements

Wireless Guidance

Low power, Radio LAN type devices (radio frequency (RF) wireless communication devices), operating in the 2.4 GHz Band, may be present (embedded) in your notebook system. The following section is a general overview of considerations while operating a wireless device.

Additional limitations, cautions, and concerns for specific countries are listed in the specific country sections (or country group sections). The wireless devices in your system are only qualified for use in the countries identified by the Radio Approval Marks on the system rating label. If the country you will be using the wireless device in, is not listed, please contact your local Radio Approval agency for requirements. Wireless devices are closely

regulated and use may not be allowed.

The power output of the wireless device or devices that may be embedded in your notebook is well below the RF exposure limits as known at this time. Because the wireless devices (which may be embedded into your notebook) emit less energy than is allowed in radio frequency safety standards and recommendations, manufacturer believes these devices are safe for use. Regardless of the power levels, care should be taken to minimize human contact during normal operation.

This transmitter must not be collocated or operate in conjunction with any other antenna or transmitter.

Some circumstances require restrictions on wireless devices. Examples of common restrictions are listed below:

Radio frequency wireless communication can interfere with equipment on commercial aircraft. Current aviation regulations require wireless devices to be turned off while traveling in an airplane. 802.11B (also known as wireless Ethernet or Wifi) and Bluetooth communication devices are examples of devices that provide wireless communication.

In environments where the risk of interference to other devices or services is harmful or perceived as harmful, the option to use a wireless device may be restricted or eliminated. Airports, Hospitals, and Oxygen or flammable gas laden atmospheres are limited examples where use of wireless devices may be restricted or eliminated. When in environments where you are uncertain of the sanction to use wireless devices, ask the applicable authority for authorization prior to use or turning on the wireless device.

Every country has different restrictions on the use of wireless devices. Since your system is equipped with a wireless device, when traveling between countries with your system, check with the local Radio Approval authorities prior to any move or trip for any restrictions on the use of a wireless device in the destination country.

If your system came equipped with an internal embedded wireless device, do not operate the wireless device unless all covers and shields are in place and the system is fully assembled.

Wireless devices are not user serviceable. Do not modify them in any way. Modification to a wireless device will void the authorization to use it. Please contact manufacturer for service.

Only use drivers approved for the country in which the device will be used. See the manufacturer System Restoration Kit, or contact manufacturer Technical Support for additional information.

United States of America

Unintentional Emitter per FCC Part 15

This device complies with Part 15 of the FCC Rules. Operation is subject to the following two conditions:(1) this device may not cause

harmful interference, and (2) this device must accept any interference received, including interference that may cause undesired operation.

This equipment has been tested and found to comply with the limits for a Class B digital device pursuant to Part 15 of the FCC Rules. These limits are designed to provide reasonable protection against harmful interference in a residential installation. This equipment generate uses and can radiate radio frequency energy and if not installed and used in accordance with the instructions may cause harmful interference will not occur in a particular installation. If this equipment does cause harmful interference to radio or television reception, which can be determined by turning the equipment off and on, the user is encouraged to try to correct the interference by one or more of the following measures:

- Reorient or relocate the receiving antenna.
- Increase the separation between the equipment and receiver.
- Connect the equipment into an outlet on a circuit different from that to which the receiver is connected
- Consult the dealer or an experienced radio/TV technician for help.

If necessary, the user should consult the dealer or an experienced radio/television technician for additional suggestions. The user may find the following booklet helpful: [Something About Interference?](#) This is available at FCC local regional offices. Our company is not responsible for any radio or television interference caused by unauthorized modifications of this equipment or the substitution or attachment of connecting cables and equipment other than those specified by our company. The correction will be the responsibility of the user. Use only shielded data cables with this system.

Intentional emitter per FCC Part 15

Low power, Radio LAN type devices (radio frequency (RF) wireless communication devices), operating in the 2.4 GHz Band, may be present (embedded) in your notebook system. This section is only applicable if these devices are present. Refer to the system label to verify the presence of wireless devices.

Wireless devices that may be in your system are only qualified for use in the United States of America if an FCC ID number is on the system label.

This transmitter must not be collocated or operate in conjunction with any other antenna or transmitter.

Operation of this device is subject to the following two conditions: (1) This device may not cause harmful interference, and (2) this device must accept any interference received, including interference that may cause undesired operation of the device.

Wireless devices are not user serviceable. Do not modify them in any

way. Modification to a wireless device will void the authorization to use it. Contact manufacturer for service.

FCC RF EXPOSURE INFORMATION

In August 1996 the Federal Communications Commission (FCC) of the United States with its action in Report and Order FCC 96-326 adopted an updated safety standard for human exposure to radio frequency electromagnetic energy emitted by FCC regulated transmitters. Those guidelines are consistent with the safety standard previously set by both U.S. and international standards bodies.

The design of this Hand PC complies with the FCC guidelines and these international standards. Use only the supplied or an approved antenna. Unauthorized antennas, modifications, or attachments could result in violation of FCC regulations.

Body-worn Operation

This device was tested for typical body-worn operations with the device directly contacted to the human body to the back and side of the Hand PC. To maintain compliance with FCC RF exposure compliance requirements, use other accessories should not contain metallic components in its assembly. The use of accessories that do not satisfy these requirements may not comply with FCC RF exposure compliance requirements, and should be avoided.

Face Held Operation

This device was tested for Face Held operations with the separation distance of 2.5 cm between the microphone of the device to the human face. While using face held operation, hold the Hand PC at least 2.5 cm(1 inch) from your face and speak in a normal voice.

SAMSUNG HANDHELD PERSONAL COMPUTER

LIMITED WARRANTY TO ORIGINAL PURCHASER

This SAMSUNG brand product, as supplied and distributed by Samsung Electronics America, Inc. (SAMSUNG) and delivered new, in the original carton to the original consumer purchaser, is warranted by SAMSUNG against manufacturing defects in materials and workmanship for a limited warranty period of:

One (1) Year Parts and Labor Carry-In/Ship-In Service*
(*90 Days Parts and Labor for Commercial Use)

This limited warranty begins on the original date of purchase, and is valid only on products purchased and used in the United States. To receive warranty service, the purchaser must contact SAMSUNG for problem determination and service procedures. Warranty service can only be performed by a SAMSUNG authorized service center. The original dated bill of sale must be presented upon request as proof of purchase to SAMSUNG or SAMSUNG's authorized service center. Transportation of the product to and from the service center is the responsibility of the purchaser.

SAMSUNG will repair or replace this product, at our option and at no charge as stipulated herein, with new or reconditioned parts or products if found to be defective during the limited warranty period specified above. All replaced parts and products become the property of SAMSUNG and must be returned to SAMSUNG. Replacement parts and products assume the remaining original warranty, or ninety (90) days, whichever is longer.

SAMSUNG does not warrant uninterrupted or error-free operation of the product, and shall not be liable for the loss or destruction of data or media resulting from the use or service of this product. It is the purchaser's responsibility to secure all programs and data contained in or affected by the product. The purchaser is cautioned that product performance may be affected by installation, system configuration, software, applications, equipment compatibility, purchaser data and operator control of the system, among other factors, and it is the purchaser's responsibility to determine the functional implementation.

SAMSUNG's obligations with respect to software products distributed by SAMSUNG under the SAMSUNG brand name are set forth in the applicable end user license agreement. Non-SAMSUNG hardware and software products, if provided, are on an "AS IS" basis. Non-SAMSUNG manufacturers, suppliers, publishers, and service providers may provide their own warranties.

This limited warranty covers manufacturing defects in materials and workmanship encountered in normal, and except to the extent otherwise expressly provided for in this statement, noncommercial use of this product, and shall not apply to the following, including, but not limited to: damage which occurs in shipment; delivery and installation; applications and uses for which this product was not intended; altered product or serial numbers;

cosmetic damage or exterior finish; accidents, abuse, neglect, fire, water, lightning or other acts of nature; use of products, equipment, systems, utilities, services, parts, supplies, accessories, applications, installations, repairs, external wiring or connectors not supplied or authorized by SAMSUNG, or which damage this product or result in service problems; incorrect electrical line voltage, fluctuations and surges; customer adjustments and failure to follow operating instructions, cleaning, maintenance and environmental instructions that are covered and prescribed in the instruction book; product removal or reinstallation; reception or display problems and distortion related to noise, echo, interference or other signal transmission and delivery problems; reduced screen brightness related to normal tube and lamp aging, or burned-in images.

THERE ARE NO EXPRESS WARRANTIES OTHER THAN THOSE LISTED AND DESCRIBED ABOVE, AND NO WARRANTIES WHETHER EXPRESS OR IMPLIED, INCLUDING, BUT NOT LIMITED TO, ANY IMPLIED WARRANTIES OF MERCHANTABILITY OR FITNESS FOR A PARTICULAR PURPOSE, SHALL APPLY AFTER THE EXPRESS WARRANTY PERIODS STATED ABOVE, AND NO OTHER EXPRESS WARRANTY OR GUARANTY GIVEN BY ANY PERSON, FIRM OR CORPORATION WITH RESPECT TO THIS PRODUCT SHALL BE BINDING ON SAMSUNG. SAMSUNG SHALL NOT BE LIABLE FOR LOSS OF REVENUE OR PROFITS, FAILURE TO REALIZE SAVINGS OR OTHER BENEFITS, OR ANY OTHER SPECIAL, INCIDENTAL OR CONSEQUENTIAL DAMAGES CAUSED BY THE USE, MISUSE OR INABILITY TO USE THIS PRODUCT, REGARDLESS OF THE LEGAL THEORY ON WHICH THE CLAIM IS BASED, AND EVEN IF SAMSUNG HAS BEEN ADVISED OF THE POSSIBILITY OF SUCH DAMAGES. NOR SHALL RECOVERY OF ANY KIND AGAINST SAMSUNG BE GREATER IN AMOUNT THAN THE PURCHASE PRICE OF THE PRODUCT SOLD BY SAMSUNG AND CAUSING THE ALLEGED DAMAGE. WITHOUT LIMITING THE FOREGOING, PURCHASER ASSUMES ALL RISK AND LIABILITY FOR LOSS, DAMAGE OR INJURY TO PURCHASER AND PURCHASER'S PROPERTY AND TO OTHERS AND THEIR PROPERTY ARISING OUT OF THE USE, MISUSE OR INABILITY TO USE THIS PRODUCT SOLD BY SAMSUNG NOT CAUSED DIRECTLY BY THE NEGLIGENCE OF SAMSUNG. THIS LIMITED WARRANTY SHALL NOT EXTEND TO ANYONE OTHER THAN THE ORIGINAL PURCHASER OF THIS PRODUCT, IS NONTRANSFERABLE AND STATES YOUR EXCLUSIVE REMEDY.

Some states do not allow limitations on how long an implied warranty lasts, or the exclusion or limitation of incidental or consequential damages, so the above limitations or exclusions may not apply to you. This warranty gives you specific legal rights, and you may also have other rights, which vary from state to state.

To obtain warranty service, please contact SAMSUNG at:

SAMSUNG CUSTOMER CARE CENTER
400 Valley Road, Suite 201, Mt. Arlington, NJ 07856
Tel: 973-601-6000, Fax: 973-601-6001
XXX-XXX-XXXX and **www.SAMSUNGUSA.com**

specification

OS

WinCE.net (4.0 PB)

CPU

PXA250 300(400)MHz (Intel)

Display

5 inch Transflective WVGA TFT LCD (800*480, 64K color)

Memory

Flash ROM 64MB(NAND type)

SDRAM 128MB(up to 256MB)

Wireless Comm.

WLAN(802.11b) built-in (11Mbps)

(Support CF II, PCMCIA type WAN solution)

Interface

CF II slot, Standard USB(Host) ,

USB docking port (PC sync.,VGA-out,Power charging)

Keyboard port (4pin), Earphone jack (stereo)

Battery

Li-polymer 1500mAH (Quick charging, 2.5hrs @ 90%)

(* battery life : PDA 9hrs, WLAN 3hrs)

Sound

Speaker (17 ϕ , mono), Mic (6 ϕ , mono)

Earphone (stereo, VOIP support)

LED Indicator

3 ea ; Red/Green (power), Orange (Alarm), Blue (Data TRX status, Email alarm)

Key Buttons

4 way navigation + enter button,

2 Hot button (Launcher, Backlit), Rec.,

Reset, Hold switch

Cover

Leather cover

Stylus

102.2mm, 4.5 ϕ

Size

155 * 91 * 13.4 (w/ leather cover)

Weight

280g (incl. Battery, keyboard cover)

250g (incl. Battery, leather cover)

Accessories

Cradle

LED (power), 2 Holes (Stylus & Pen)

Charging slot for 2nd battery

Detachable Sync. Cable & AC adapter

**Leather/keyboard Cover can be open on cradle

**Device with 2nd battery can be mounted on cradle

Earphone

2.5 ϕ , Stereo MP3, Mic. Support

Standing module

CF slot built-in type, Simple & Rugged style

VGA-out cable

800*600, 640*480 support,

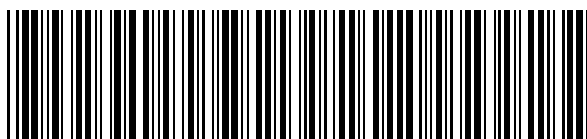
Enhanced compression rate

SAMSUNG DIGITall

everyone's invited

SAMSUNG CUSTOMER CARE CENTER
400 Valley Road, Suite 201, Mt. Arlington, NJ 07856
Tel: 973-601-6000, Fax: 973-601-6001

www.samsungnexio.com



BA68-01743A10

Printed in Korea.