



INDEX

1. Introduction

1.1 Introduction to Bluetooth Wireless Technology	2
1.2 Introduction to Bluetooth PC Dongle.....	2
1.3 Box Content and Picture	2

2. System Requirement

2.1 PC System Requirement:	3
----------------------------------	---

3. Specification

3.1 External appearance.....	4
3.2 Bluetooth Specification.....	4
3.3 Supported Bluetooth Profile	4

4. Software Installation 5

5. Pairing Guide 10

6. Connect and Disconnect

6.1 Connect	18
6.2 Disconnect	19

7. Certification and safety approvals24

8. Correct Disposal of This Product.....26

1. Introduction

1.1 Introduction to Bluetooth Wireless Technology

Bluetooth is a short-range wireless communication technology. It allows wireless connections between Bluetooth devices such as cellular phones, personal digital assistants (PDA), desktop and notebooks computers, input-output devices (mouse, keyboards, and printers), and home appliances. Bluetooth refers to a worldwide standard designed to operate in the internationally recognized ISM(Industrial Scientific and Medical) frequency band. Within the ISM band (2.402GHz ~ 2.480GHz) Bluetooth transmissions hop between 79 separate frequencies 1,600 times every second, and with a communication range of about 10 meters (33 feet) for class II or 100 meters (330 feet) for class I.

1.2 Introduction to Bluetooth PC Dongle

Bluetooth PC Dongle is a Bluetooth enabler, that enables your desktop or notebook computer to connect wirelessly to any other Bluetooth enabled computers and devices. It allows a working range of up to 10 (class 2)/100 (class 1) meters (33/330 feet) with a 3Mbps data rate transmission, and complies with Bluetooth 1.2 and USB 1.1 (support the two lower data-transfer rates of either 1.5Mb/s or 12Mb/s)/ 2.0(support all three data rates: 1.5Mb/s, 12Mb/s, and 480Mb/s. the fast data-transfer rate of 480 Mb/s) specifications.

Bluetooth PC Dongle is an ideal solution for home and mobile networking needs. It is easy to install and use for wireless connectivity to such as cellular phones, PDAs, printers, computers, keyboards, mouse etc.

1.3 Box Content and Picture

- Bluetooth PC Dongle



- Driver CD(Bluetooth Stack + User Manual)



2. System Requirement

2.1 PC System Requirement:

- CPU: Intel Pentium III 500MHz or above.
- Memory: 256MB or more.
- Hard disk space: at least 50MB.
- OS: Microsoft Windows 2000/XP
- A free USB port, USB 1.1/2.0 compliant.
- CD-ROM Drive.

3. Specification

3.1 External appearance

- Dimensions : 53mm x 22.5mm x 11.2mm
- Weight : 10.2g
- Operating Temperature Range : -20°C ~ 60°C

3.2 Bluetooth Specification

- In compatible with Bluetooth Spec. V2.0+EDR(Enhanced Data Rate)
- Frequency Range : 2.402GHz ~ 2.480GHz
- Data Rate : Support 1Mbps, 2Mbps and 3Mbps
- Rx Sensitivity : -75dBm
- Tx Output Power : -6 ~ +4dBm

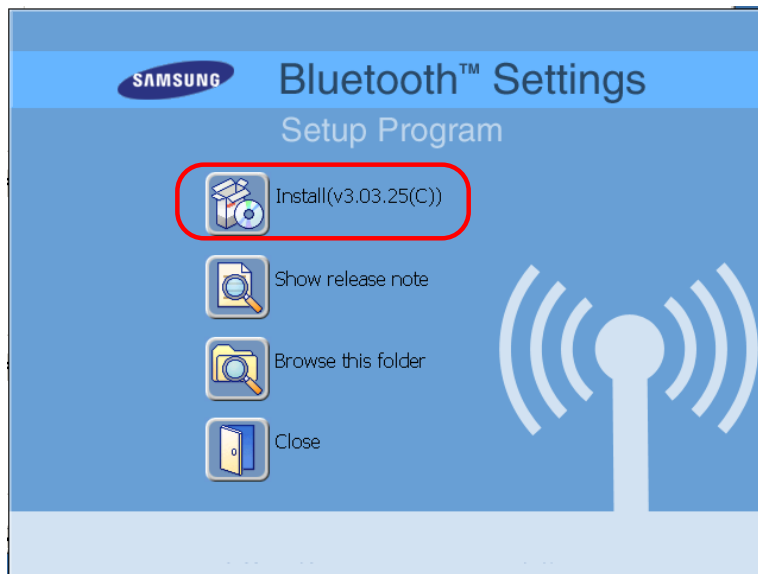
3.3 Supported Bluetooth Profile

- DUN(Dial-Up Networking Profile)
- BIP(Basic Image Profile)
- HCRP(Hard Copy Replacement Profile)
- GAVDP(Generic Audio/Video Distribution Profile)
- A2DP(Advanced Audio Distribution Profile)
- AVRCP(Audio/Video Remote Control Profile)
- HID(Human Interface Device)
- PAN(Personal Area Networking)
- LAP(LAN Access Profile)
- FTP(File Transfer Profile)
- OPP(Object Push Profile)

4. Software Installation

Note: Do not plug your Bluetooth PC Dongle into USB port until you have completed the software installation as the following

1. Insert the software CD comes with your PC Dongle. The "InstallShield Wizard" should automatically start running. If it doesn't load, run its "Setup.exe" file.
2. A menu window appears for you to select settings items. Click "Install" to start installation process.



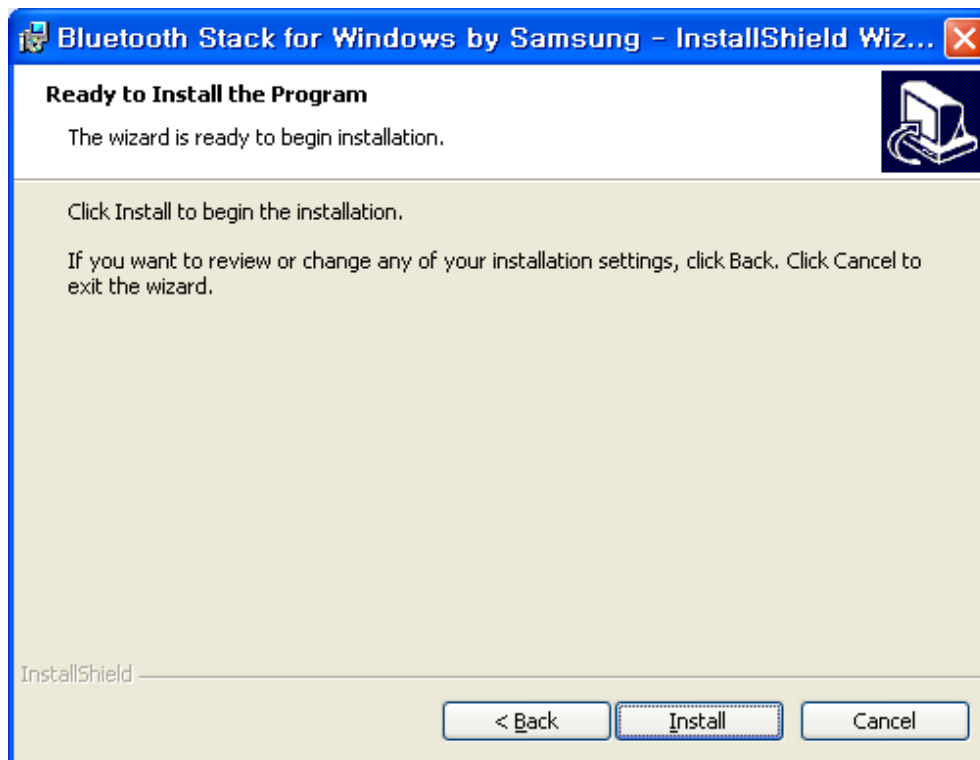
3. The InstallShield Wizard window should now appear, Click "Next".



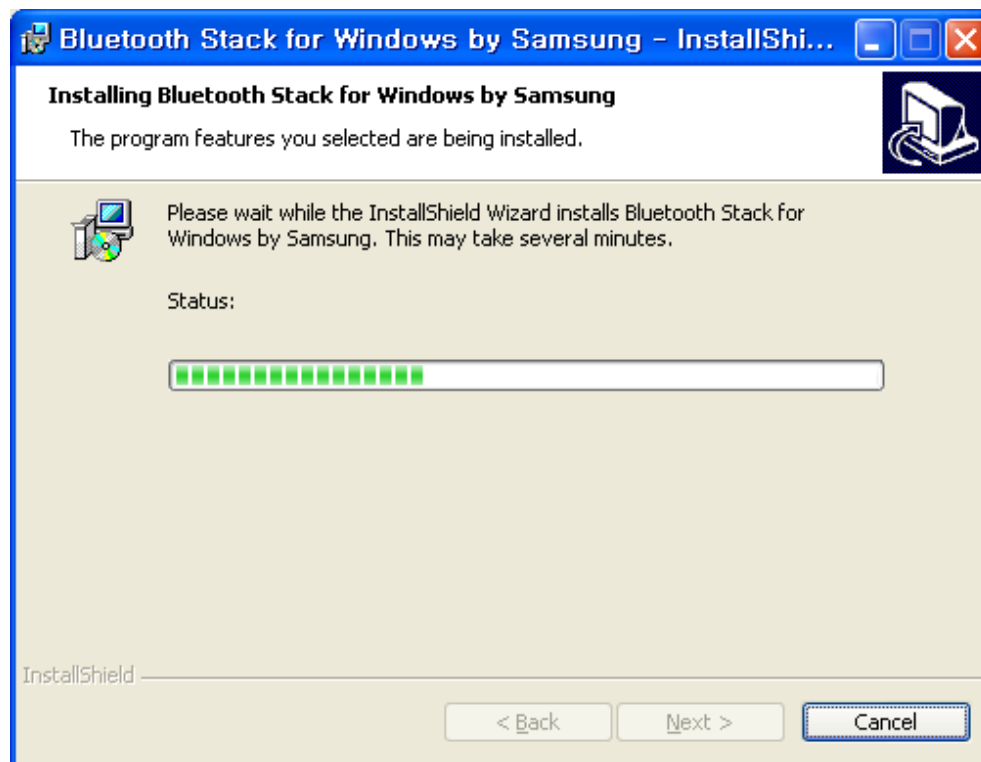
4. Select "Yes" to accept License Agreement.



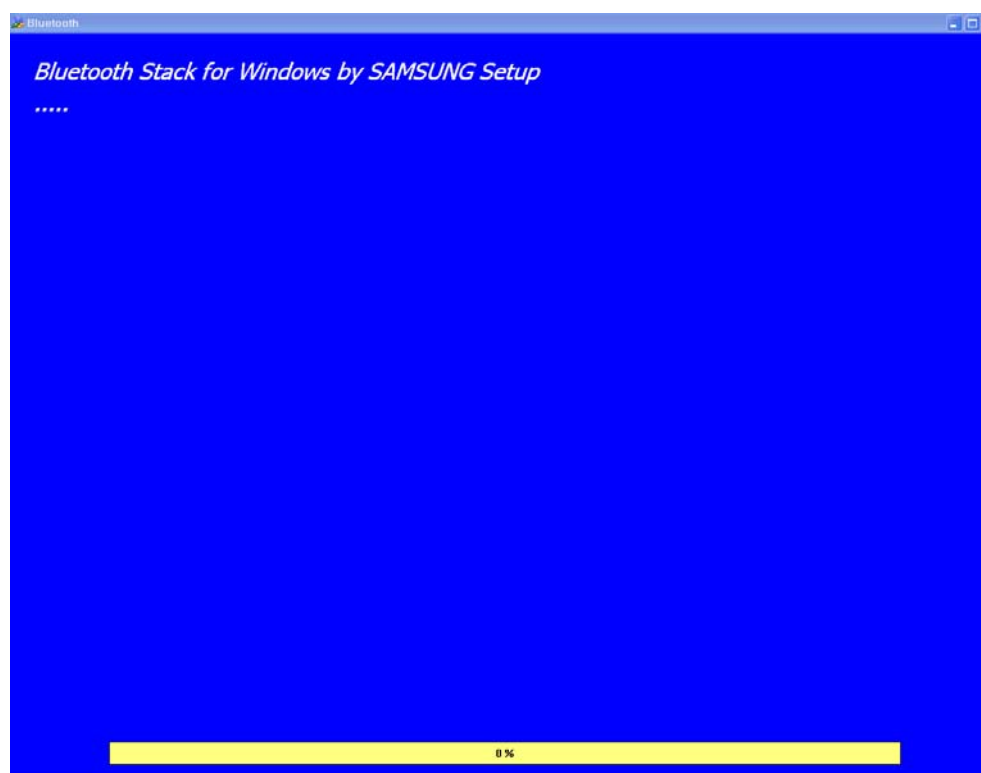
5. Click "Install" to begin the installation.



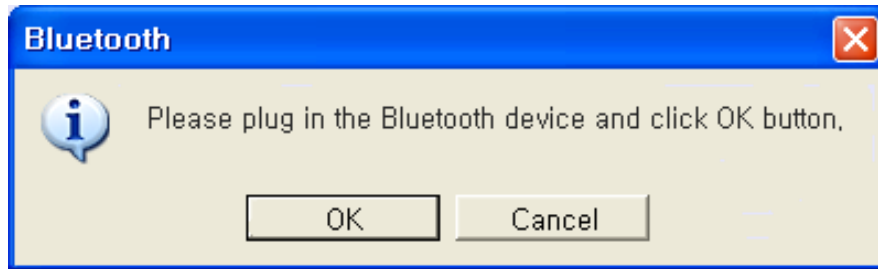
6. InstallShield is processing.



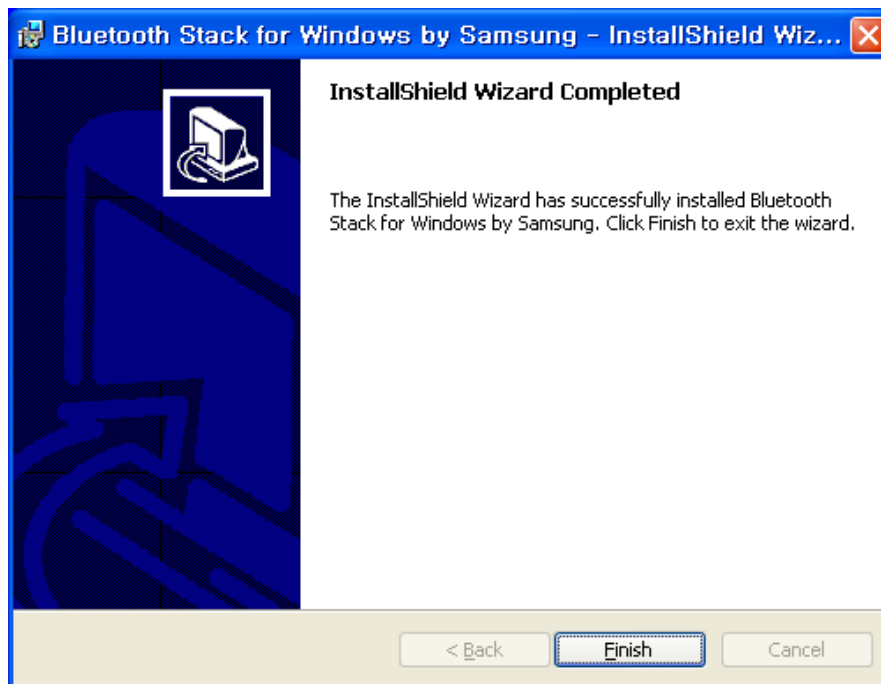
7. Wait for the setup.



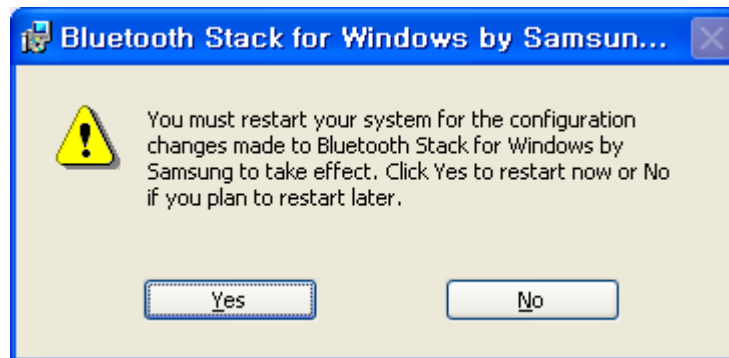
8. Now plug the PC Dongle onto an available USB port and click "OK" to continue installation.



9. Click "Finish" to finish the installation.



10. You will be asked to restart system. Click "Yes" to restart immediately or click "No" to restart later.



5. Pairing Guide

What's pairing?

Pairing is a process of associating Bluetooth devices with each other. It allows avoiding entering access information every time when a connection is requested. Bluetooth devices need to be paired with each other before attempting a connection at first time.

Paired devices will remain paired, even if:

1. One of the devices is un-powered.
2. A service connection is interrupted or stopped.
3. One or both devices are rebooted.

Pass Key

Paired devices share a unique Pass Key (also referred to as Link Key), by which they authenticate with each other when connecting. The Pass Key can be alphanumeric, numbers, or letters, and must consist of one or up to 16 characters.

How to pair devices?

Automatically -- If a passkey is required before connection, devices will pair automatically the first time they connect (a passkey must be successfully exchanged).

Manually -- In the main window of Bluetooth Manager, right click a device, select Pair Device from the popup menu, and then input a same passkey on both sides.

Example 1. Pair with a Bluetooth Mouse.

1. Open Bluetooth Manager main window by clicking Bluetooth icons on task bar.



2. Set the Bluetooth Mouse into pairing mode. Click "New Connection" button to start Bluetooth device searching.



3. Select "Express Mode" and click "Next". System starts searching Bluetooth devices in working range.



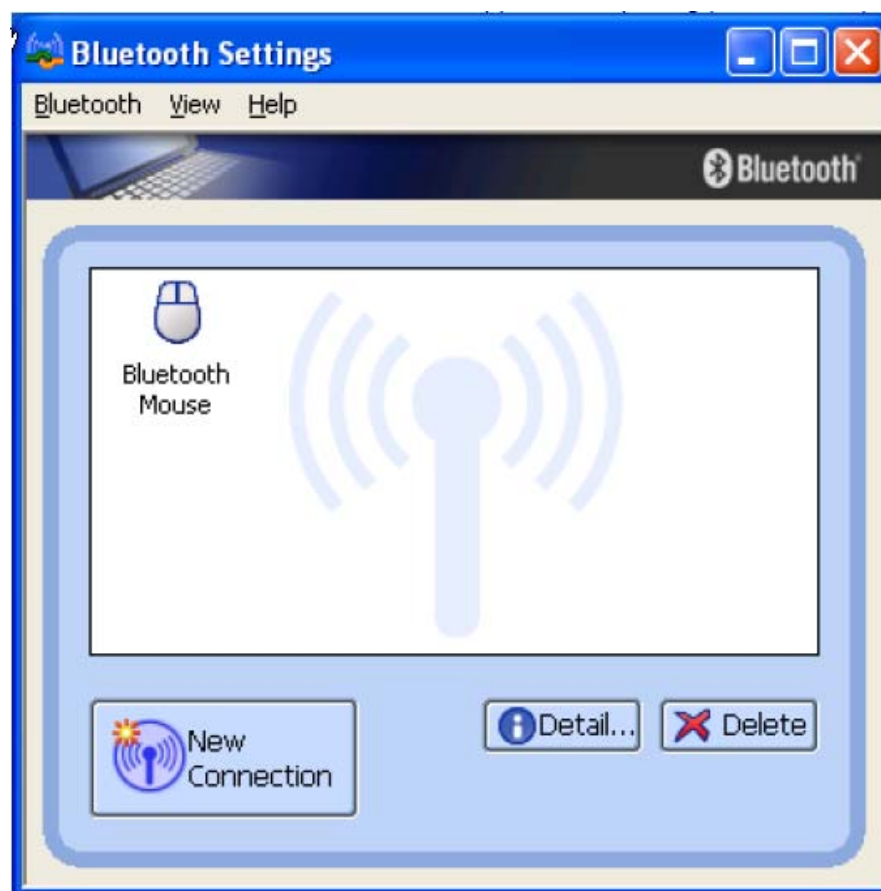
4. Select the "Bluetooth Mouse" in the Bluetooth Device list and click "Next". If you can't find the device you want to pair with, click "Refresh" to search again.



5. Enter a name and select an icon.

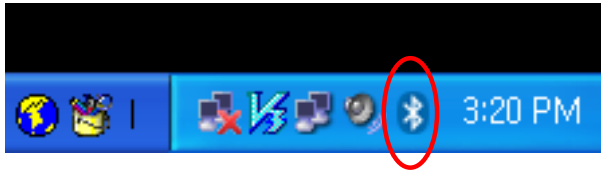


6. An icon "Bluetooth Mouse" will appear after pairing process completed.



Example 2. Pair with a Bluetooth Headset.

1. Open Bluetooth Manager main window by clicking Bluetooth icons on task bar.



2. Set the Bluetooth Headset into pairing mode. Click "New Connection" button to start Bluetooth device searching.



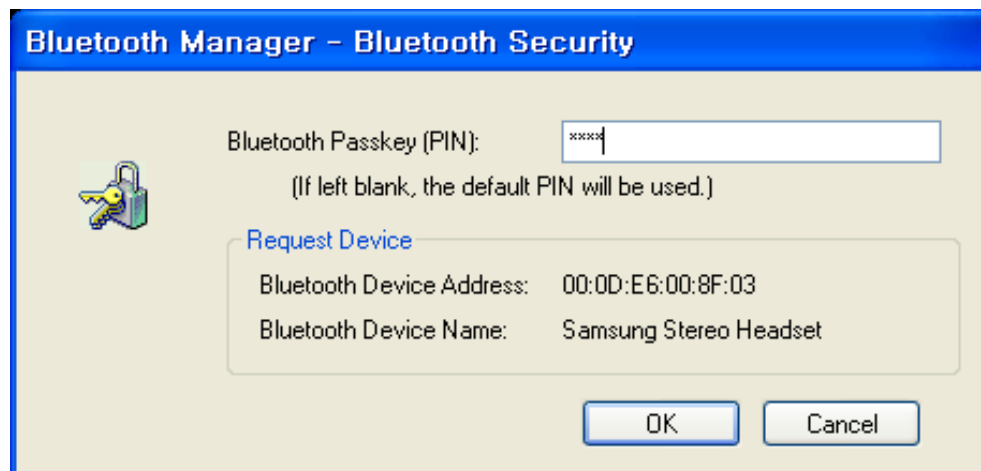
3. Select "Express Mode" and click "Next". System starts searching Bluetooth devices in working range.



4. Select the "Samsung Stereo Headset" in the Bluetooth Device list and click "Next". If you can't find the device you want to pair with, click "Refresh" to search again.



5. You will be required to enter Passkey (PIN Code). Check headset's manual for the passkey and enter it.



6. Enter a name and select an icon.



7. An icon “Samsung Stereo Headset” will appear after pairing process completed.



Note! Read Help file of “Bluetooth Settings” for detail information.



6. Connect and Disconnect

6.1 Connect

There are two ways to setup a Bluetooth connection.

Select Remote Device First :

Select a remote device and double click it to refresh its services. Bluetooth passkey may be asked if security level of either side of the connection is set to High and they are not paired devices. After service searching finished, the services that the remote device supports are found and the corresponding service icons on the top of the main window will change to be pink color.

Double click the pink color service icon you want to connect on the top of the Main Window.

Connection will be setup. After connection is OK, the remote device and the service icon will turn green.

Note:

PAN: If the PAN server side does not connect to a DHCP server, it will take about 45 seconds to assign the IP address for the PAN client. Users have to wait about 45 seconds before using TCP/IP.

DUN: There will be a dial-up dialog box. The user needs to input the ISP phone number, its name and the password.

FTP: After connection is setup, a FTP Window will pop up. The window shows the shared directories of the remote device. The window may be empty if there is no file or directory on the remote site.

OPP: There are four kinds of operation modes for OPP: Send My Card, Get Card, Send Objects and Exchange Cards. At the beginning, the default operation is Send My Card. Users can right click the icon to select operation on the popup menu. Send My Card will send my card directly to the remote device. Get Card will try to require the owner's card from the remote device. Exchange Cards will send my card first and then get the remote device card. Send Objects will pop up a file dialog box to let users to select some object files to send to the remote device. Object means the files in the format of vCards2.1, vCalendar1.0, vMessage and vNote.

Synchronization: There will be a dialog to let user to operate.

Printer: After the connection is established, users can use the printer to print with any other Windows applications that support printing.

Select Service Icon First :

Select a service icon on the top of the main Window. If you have ever browsed the services of some remote devices, the device that supports the service will be highlighted in yellow.

Double click the remote browse first to check whether the device has the service and then connect to it. If the remote device does not have the service, connection will fail. The Bluetooth passkey may be asked if the security level of either side of the connection is set to High and they are not paired devices.

Note:

There are corresponding operation menu on the remote device icon and the service icon. Users can also start the connection using the pop up menu.

6.2 Disconnect

Select the remote device first and right click the service icon on the top of the main window. On the pop up menu, select Disconnect.

Select the remote device and right click the device icon. On the pop up menu, select Disconnect / submenu(the connection you want to disconnect).

With FTP and Synchronization, close their operation window and the connection will be disconnected.

The remote device side can disconnect the connection directly.

If the local Bluetooth device is removed or the remote device is removed, all the connections will be disconnected. If the remote device moves out of the radio range, all the connections with the remote device will be disconnected after about 1 minute.

Note: When the program starts, it will show some words in the bottom right hand corner of the screen.

Example 1. Connect/ Disconnect with a Bluetooth Mouse.

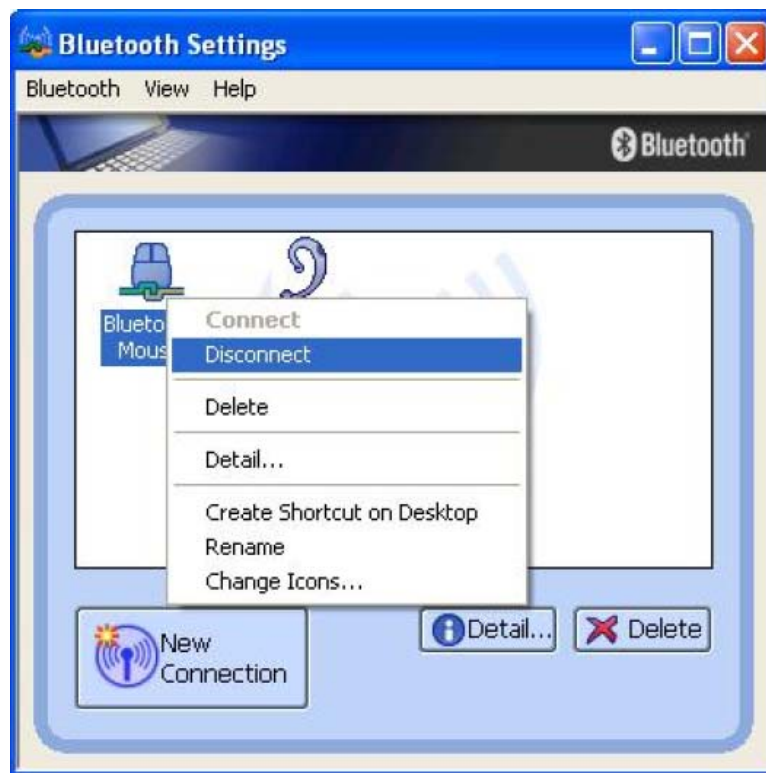
1. Turn on the Bluetooth Mouse. Move the cursor over the icon of Bluetooth Mouse in Bluetooth Settings. Right click it and select "Connect".



2. The icon of Bluetooth Mouse will be changed to connecting status.

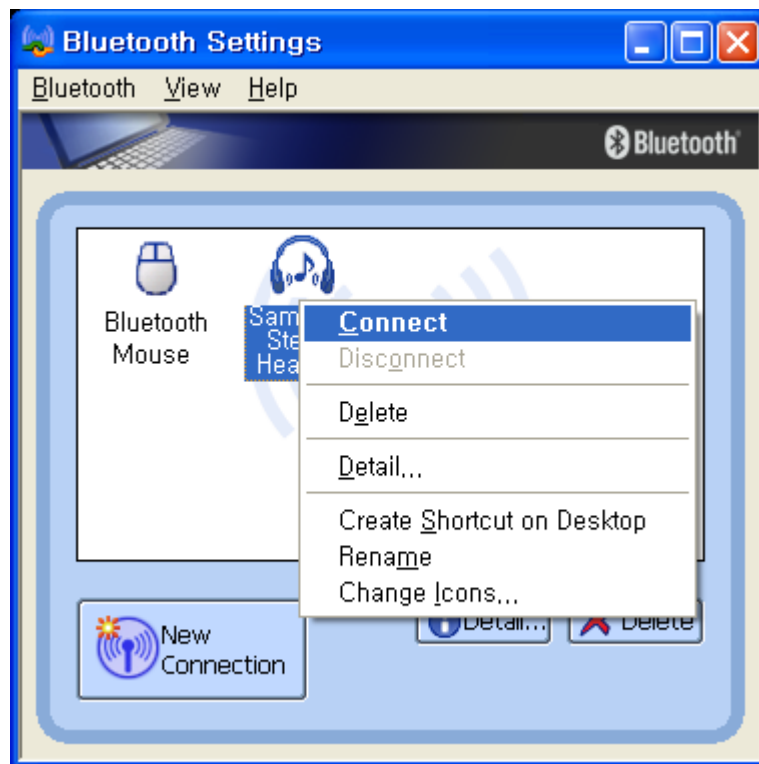


3. To disconnect the mouse, right click on the icon and select "Disconnect".



Example 2. Connect/ Disconnect with a Bluetooth Headset.

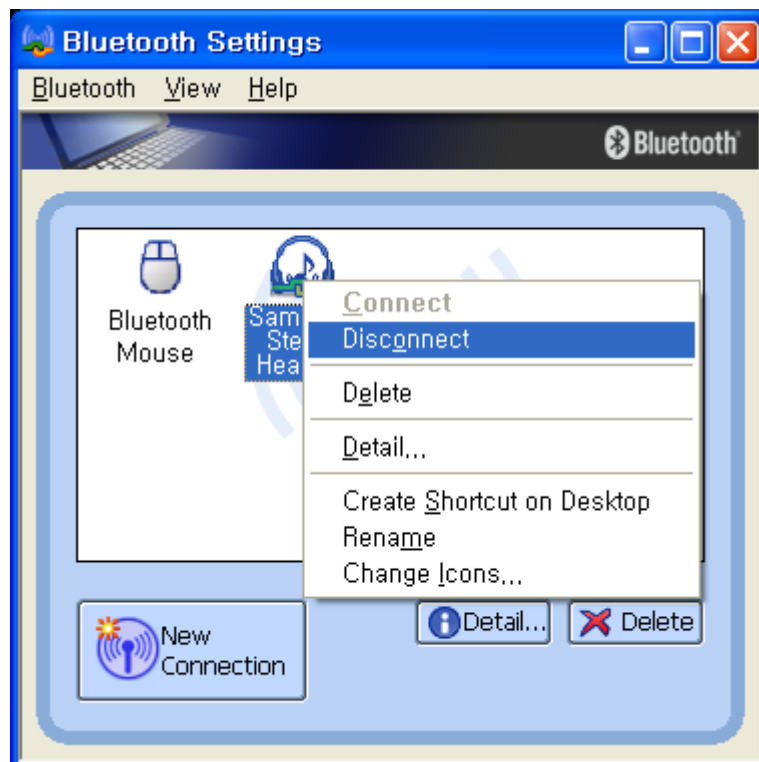
1. Turn on the Bluetooth Headset. Move the cursor over the icon of Bluetooth Headset in Bluetooth Settings. Right click it and select "Connect".



2. The icon of Bluetooth Headset will be changed to connecting status.



3. To disconnect the mouse, right click on the icon and select "Disconnect".



Note! Read Help file of "Bluetooth Settings" for detail information.



7. Certification and safety approvals

Declaration of Conformity(R&TTE)

- **For the following product** : Samsung Bluetooth PC Dongle (SBD100PBE)
- **Manufactured at** : Youngbo Engineering Inc.
HCN B/D 7th 1462-7, Seocho 3-dong
Seocho-Gu, Seoul
Korea

to which this declaration relates, is in conformity with the following standards and/or other normative documents.

- **Radio** : EN 300328 V1.4.1 (2003-04)
- **EMC** : EN 301 489-1 V1.4.1 (2002-08)/ EN 301 489-17 V1.2.1 (2002-08)
- **Safety** : EN 60950 : 2000(3rd Edition)
- **SAR**: EN 50371 : 2002

We hereby declare that [all essential radio test suites have been carried out and that] the above named product is in conformity to all the essential requirements of Directive 1999/5/EC.

SAMSUNG ELECTRONICS CO., LTD.
Samsung Main Bldg.
250, 2-Ga, Taepyeong-Ro, Jung-Gu
Seoul, Korea 100-742
2005. 11. 2
Manager

서명란

Cruise Jong-Myung Park

FCC

This device complies with part 15 of the FCC Rules, Operation is subject to the following two conditions:

(1) This device may not cause harmful interface, and (2) this device must accept any interference received, including interference that may cause undesired operation.

This equipment has been tested and found to comply with the limits for a Class B digital device, pursuant to part 15 of the FCC Rules. These limits are designed to provide reasonable protection against harmful interference in a residential installation. This equipment generates, uses and can radiate radio frequency energy and, if not installed and used in accordance with the instruction, may cause harmful interference to radio communications. However, there is no guarantee that interference will not occur in a particular installation. If this equipment dose cause harmful interference to radio or television reception, which can be determined by turning the equipment off and on, the user is encouraged to try to correct the interference by one or more of the following measure:

- Reorient or relocate the receiving antenna
- Increase the separation between the equipment and receiver
- Connect the equipment into an outlet on a circuit different from that to which the receiver is connected
- Consult the dealer or an experienced radio/TV technician for help

The device and its antenna must not be co-located or operating in conjunction with any other antenna or transmitter.

Users are not permitted to make changes or modify the device in any way. Changes or modifications not expressly approved by Samsung will void the user's authority to operate the equipment.

Bluetooth

The Bluetooth® word mark and logos are owned by the Bluetooth SIG, Inc. and any use of such marks by Youngbo Engineering Inc. is under license.

Other trademarks and trade names are those of their respective owners.

8. Correct Disposal of This Product



I/B Text for WEEE Symbol (v5.0)

April 28, 2005

English



Correct Disposal of This Product (Waste Electrical & Electronic Equipment)

(Applicable in the European Union and other European countries with separate collection systems)

This marking shown on the product or its literature, indicates that it should not be disposed with other household wastes at the end of its working life. To prevent possible harm to the environment or human health from uncontrolled waste disposal, please separate this from other types of wastes and recycle it responsibly to promote the sustainable reuse of material resources.

Household users should contact either the retailer where they purchased this product, or their local government office, for details of where and how they can take this item for environmentally safe recycling.

Business users should contact their supplier and check the terms and conditions of the purchase contract. This product should not be mixed with other commercial wastes for disposal.

Deutsch



Korrekte Entsorgung dieses Produkts (Elektromüll)

(Anzuwenden in den Ländern der Europäischen Union und anderen europäischen Ländern mit einem separaten Sammelsystem)

Die Kennzeichnung auf dem Produkt bzw. auf der dazugehörigen Literatur gibt an, dass es nach seiner Lebensdauer nicht zusammen mit dem normalen Haushaltsmüll entsorgt werden darf. Entsorgen Sie dieses Gerät bitte getrennt von anderen Abfällen, um der Umwelt bzw. der menschlichen Gesundheit nicht durch unkontrollierte Müllbeseitigung zu schaden. Recyceln Sie das Gerät, um die nachhaltige Wiederverwertung von stofflichen Ressourcen zu fördern.

Private Nutzer sollten den Händler, bei dem das Produkt gekauft wurde, oder die zuständigen Behörden kontaktieren, um in Erfahrung zu bringen, wie sie das Gerät auf umweltfreundliche Weise recyceln können.

Gewerbliche Nutzer sollten sich an Ihren Lieferanten wenden und die Bedingungen des Verkaufsvertrags konsultieren. Dieses Produkt darf nicht zusammen mit anderem Gewerbemüll entsorgt werden.

Français



Comment éliminer ce produit (déchets d'équipements électriques et électroniques)

(Applicable dans les pays de l'Union Européen et aux autres pays européens disposant de systèmes de collecte sélective)

Ce symbole sur le produit ou sa documentation indique qu'il ne doit pas être éliminé en fin de vie avec les autres déchets ménagers. L'élimination incontrôlée des déchets pouvant porter préjudice à l'environnement ou à la santé humaine, veuillez le séparer des autres types de déchets et le recycler de façon responsable. Vous favoriserez ainsi la réutilisation durable des ressources matérielles.

Les particuliers sont invités à contacter le distributeur leur ayant vendu le produit ou à se renseigner auprès de leur mairie pour savoir où et comment ils peuvent se débarrasser de ce produit afin qu'il soit recyclé en respectant l'environnement.

Les entreprises sont invitées à contacter leurs fournisseurs et à consulter les conditions de leur contrat de vente. Ce produit ne doit pas être éliminé avec les autres déchets commerciaux.

Italiano



Corretto smaltimento del prodotto **(rifiuti elettrici ed elettronici)**

(Applicabile in i paesi dell'Unione Europea e in quelli con sistema di raccolta differenziata)

Il marchio riportato sul prodotto o sulla sua documentazione indica che il prodotto non deve essere smaltito con altri rifiuti domestici al termine del ciclo di vita. Per evitare eventuali danni all'ambiente o alla salute causati dall'inopportuno smaltimento dei rifiuti, si invita l'utente a separare questo prodotto da altri tipi di rifiuti e di riciclarlo in maniera responsabile per favorire il riutilizzo sostenibile delle risorse materiali.

Gli utenti domestici sono invitati a contattare il rivenditore presso il quale è stato acquistato il prodotto o l'ufficio locale preposto per tutte le informazioni relative alla raccolta differenziata e al riciclaggio per questo tipo di prodotto.

Gli utenti aziendali sono invitati a contattare il proprio fornitore e verificare i termini e le condizioni del contratto di acquisto. Questo prodotto non deve essere smaltito unitamente ad altri rifiuti commerciali.

Español



Eliminación correcta de este producto **(material eléctrico y electrónico de descarte)**

(Aplicable en la Unión Europea y en países europeos con sistemas de recogida selectiva de residuos)

La presencia de esta marca en el producto o en el material informativo que lo acompaña, indica que al finalizar su vida útil no deberá eliminarse junto con otros residuos domésticos. Para evitar los posibles daños al medio ambiente o a la salud humana que representa la eliminación incontrolada de residuos, separe este producto de otros tipos de residuos y reciclelo correctamente para promover la reutilización sostenible de recursos materiales.

Los usuarios particulares pueden contactar con el establecimiento donde adquirieron el producto, o con las autoridades locales pertinentes, para informarse sobre cómo y dónde pueden llevarlo para que sea sometido a un reciclaje ecológico y seguro.

Los usuarios comerciales pueden contactar con su proveedor y consultar las condiciones del contrato de compra. Este producto no debe eliminarse mezclado con otros residuos comerciales.

Netherlands



Correcte verwijdering van dit product (elektrische & elektronische afvalapparatuur)

Dit merkteken op het product of het bijbehorende informatiemateriaal duidt erop dat het niet met ander huishoudelijk afval verwijderd moet worden aan het einde van zijn gebruiksduur. Om mogelijke schade aan het milieu of de menselijke gezondheid door ongecontroleerde afvalverwijdering te voorkomen, moet u dit product van andere soorten afval scheiden en op een verantwoorde manier recycleren, zodat het duurzame hergebruik van materiaalbronnen wordt bevorderd.

Huishoudelijke gebruikers moeten contact opnemen met de winkel waar ze dit product hebben gekocht of met de gemeente waar ze wonen om te vernemen waar en hoe ze dit product milieuvriendelijk kunnen laten recycleren.

Zakelijke gebruikers moeten contact opnemen met hun leverancier en de algemene voorwaarden van de koopovereenkomsten nalezen. Dit product moet niet worden gemengd met ander bedrijfsafval voor verwijdering.

Denmark



Korrekt affaldsbortskaffelse af dette produkt (elektrisk & elektronisk udstyr)

Mærket på dette produkt eller i den medfølgende dokumentation betyder, at produktet ikke må bortskaffes sammen med almindeligt husholdningsaffald efter endt levetid. For at undgå skadelige miljø- eller sundhedspåvirkninger på grund af ukontrolleret affaldsbortskaffelse skal dette produkt bortskaffes særskilt fra andet affald og indleveres behørigt til fremme for bæredygtig materialegenvinding.

Hjemmebrugere bedes kontakte forhandleren, hvor de har købt produktet, eller den lokale myndighed for oplysning om, hvor og hvordan de kan indlevere produktet med henblik på miljøforsvarlig genvinding.

Erhvervsbrugere bedes kontakte leverandøren og læse betingelserne og vilkårene i købekontrakten. Dette produkt bør ikke bortskaffes sammen med andet erhvervsaffald.

Republic of Ireland (Gaelic)



Diúscairt Cheart an Táirge Seo (Trealamh Leictreach agus Leictreonach Dramhaíola)

Léiríonn an mharcáil seo atá ar an táirge nó sa litríocht a thagann leis, nár chóir é a dhiúscairt le dramhaíl tí eile ag deireadh a shaoil oibre. Chun cosaint i gcoinne dochar don chomhshaol nó do shláinte an duine, a d'fhéadfadh bheith mar thoradh ar an ndiúscairt dramhaíola neamhtheoranta, scar an dramhaíl seo ó chineálacha eile dramhaíola le do thoil agus déan athchursáil fhreagrach air chun athúsáid inmhhartha na hacmhainní ábhartha a chur chun cinn.

Ba chóir dóibh siúd a úsáideann an trealamh sa bhaile dul i dteagmháil leis an díoltóir ónar cheannaigh siad an táirge seo, nó lena n-oifig áitiúil Rialtais, ar mhaithe le sonraí a fháil faoi cá háit agus cathain is féidir athchursáil atá slán ó thaobh an chomhshaol de a dhéanamh ar an táirge seo.

Ba chóir dóibh siúd a úsáideann an trealamh seo ina ngnó dul i dteagmháil leis an soláthróir agus téarmaí agus coinníollacha an chonartha ceannaigh a sheiceáil. Níor chóir an táirge seo a chur le dramhaíl eile tráchtála agus diúscairt a déanamh.

Lithuania



Tinkamas produkto atliekų tvarkymas (atitarnavusi elektros ir elektronikos įranga)

Šis ženklas, pateikiamas ant produkto ar jo dokumentacijoje, nurodo, kad pasibaigus produkto tarnavimo laikui, jo negalima išmesti kartu su kitomis buitinėmis atliekomis. Kad būtų išvengta galimos nekontroliuojamo atliekų išmetimo žalos aplinkai arba žmonių sveikatai, ir siekiant skatinti aplinką tausojantį antrinių žaliavų panaudojimą, pašom atskirti jį nuo kitų rūšių atliekų ir atiduoti perdirbti.

Informacijos, kur ir kaip pristatyti šį produktą saugiai perdirbti, privatūs vartotojai turėtų kreiptis arba į parduotuvę, kurioje šį produktą pirkė, arba į vietines valdžios institucijas.

Verslo vartotojai turėtų kreiptis į savo tiekėją ir peržiūrėti pirkimo sutarties sąlygas. Šis produktas tvarkant atliekas negali būti sumaišytas su kitomis atliekomis.

Czech Republic



Správná likvidace tohoto produktu (Zničení elektrického a elektronického zařízení)

Tato značka zobrazená na produktu nebo v dokumentaci znamená, že by neměl být používán s jinými domácími zařízeními po skončení svého funkčního období. Aby se zabránilo možnému znečištění životního prostředí nebo zranění člověka díky nekontrolovanému zničení, oddělte je prosíme od dalších typů odpadů a recyklujte je zodpovědně k podpoře opětovného využití hmotných zdrojů.

Členové domácnosti by měli kontaktovat jak prodejce, u něhož produkt zakoupili, tak místní vládní kancelář, ohledně podrobností, kde a jak můžete tento výrobek bezpečně vzhledem k životnímu prostředí recyklovat.

Obchodníci by měli kontaktovat své dodavatele a zkontrolovat všechny podmínky koupě. Tento výrobek by se neměl míchat s jinými komerčními produkty, určenými k likvidaci.

Slovenia



Ustrezno odstranjevanje tega izdelka (odpadna električna in elektronska oprema)

Oznaka na izdelku ali spremljevalni dokumentaciji pomeni, da ga na koncu uporabne dobe ne smemo odstranjevati skupaj z drugimi gospodinjskimi odpadki. Da bi preprečili morebitno tveganje za okolje ali zdravje človeka zaradi nenadzorovanega odstranjevanja odpadkov, izdelek ločite od drugih vrst odpadkov in ga odgovorno reciklirajte ter tako spodbudite trajnostno ponovno uporabo materialnih virov.

Uporabniki v gospodinjstvih naj za podrobnosti o tem, kam in kako lahko odnesejo ta izdelek na okolju varno recikliranje, pokličejo trgovino, kjer so izdelek kupili, ali lokalni vladni urad.

Podjetja naj pokličejo dobavitelja in preverijo pogoje nabavne pogodbe. Tega izdelka pri odstranjevanju ne smete mešati z drugimi gospodarskimi odpadki.

Latvia



Izstrādājuma pareiza likvidēšana (nolietotas elektriskās un elektroniskās ierīces)

Uz izstrādājuma vai tam pievienotajās instrukcijās dotais marķējums norāda, ka to nedrīkst likvidēt kopā ar citiem sadzīves atkritumiem pēc tā ekspluatācijas laika. Lai novērstu vidi un cilvēku veselībai iespējamo kaitējumu, kas ir saistīts ar nekontrolējamu atkritumu likvidēšanu, tas jānošķir no citiem atkritumiem un jāpārstrādā, lai sekmētu materiālo resursu atbildīgu atkārtotu lietošanu.

Mājsaimniecības lietotājiem jāsaazinās vai nu ar veikalu, kurā šis izstrādājums ir pirkt, vai ar pašvaldību, lai iegūtu informāciju par to, kā un kur var nodot šo izstrādājumu, lai garantētu ekoloģiski drošu reciklēšanu.

Rūpnieciskajiem lietotājiem jāsaazinās ar piegādātāju un jāpārbauda pirkuma līguma nosacījumi. Šo izstrādājumu nedrīkst sajaukt ar citiem likvidējamiem rūpnieciskajiem atkritumiem.

Greece



Σωστή Διάθεση αυτού του Προϊόντος (Απορρίμματα Ηλεκτρικού & Ηλεκτρονικού Εξοπλισμού)

Τα σήματα που εμφανίζονται επάνω στο προϊόν ή στα εγχειρίδια που το συνοδεύουν, υποδεικνύουν ότι δεν θα πρέπει να ρίπτεται μαζί με τα υπόλοιπα οικιακά απορρίμματα μετά το τέλος του κύκλου ζωής του. Προκειμένου να αποφευχθούν ενδεχόμενες βλαβερές συνέπειες στο περιβάλλον ή την υγεία εξαιτίας της ανεξέλεγκτης διάθεσης απορριμμάτων, σας παρακαλούμε να το διαχωρίσετε από άλλους τύπους απορριμμάτων και να το ανακυκλώσετε, ώστε να βοηθήσετε στην βιώσιμη επαναχρησιμοποίηση των υλικών πόρων.

Οι οικιακοί χρήστες θα πρέπει να έλθουν σε επικοινωνία είτε με τον πωλητή απ' όπου αγόρασαν αυτό το προϊόν, είτε τις κατά τόπους υπηρεσίες, προκειμένου να πληροφορηθούν τις λεπτομέρειες σχετικά με τον τρόπο και τον τρόπο με τον οποίο μπορούν να δώσουν αυτό το προϊόν για ασφαλή προς το περιβάλλον ανακύκλωση.

Οι επιχειρήσεις-χρήστες θα πρέπει να έλθουν σε επαφή με τον προμηθευτή τους και να ελέγξουν τους όρους και τις προϋποθέσεις του συμβολαίου πώλησης. Το προϊόν αυτό δεν θα πρέπει να αναμειγνύεται με άλλα συνηθισμένα απορρίμματα προς διάθεση.

Norway



Korrekt avhending av dette produkt (Avfall elektrisk og elektronisk utstyr)

Denne merkingen som vises på produktet eller dens dokumentasjon, indikerer at den ikke skal kastes sammen med annet husholdningsavfall ved slutten av sin levetid. For å hindre mulig skade på miljøet eller menneskelig helse fra ukontrollert avfallsavhending, vennligst atskill dette fra andre typer avfall og resirkuler det ansvarlig for å fremme bærekraftig gjenbruk av materielle ressurser.

Husholdningsbrukere bør kontakte enten forhandleren de kjøpte produktet av, eller lokale myndigheter, for detaljer om hvor og hvordan de kan frakte denne artikkelen for miljømessig trygg resirkulering.

Forretningsbrukere bør kontakte sin leverandør og undersøke vilkårene i kjøpekontrakten. Dette produktet skal ikke blandes med annet kommersielt avfall som skal kastes.



Prawidłowe usuwanie produktu
(zużyty sprzęt elektryczny i elektroniczny)

Oznaczenie umieszczone na produkcie lub w odnoszących się do niego tekstach wskazuje, że produktu po upływie okresu użytkowania nie należy usuwać z innymi odpadami pochodzącymi z gospodarstw domowych. Aby uniknąć szkodliwego wpływu na środowisko naturalne i zdrowie ludzi wskutek niekontrolowanego usuwania odpadów, prosimy o oddzielenie produktu od innego typu odpadów oraz odpowiedzialny recykling w celu promowania ponownego użycia zasobów materialnych jako stałej praktyki.

W celu uzyskania informacji na temat miejsca i sposobu bezpiecznego dla środowiska recyklingu tego produktu użytkownicy w gospodarstwach domowych powinni skontaktować się z punktem sprzedaży detalicznej, w którym dokonali zakupu produktu, lub z organem władz lokalnych.

Użytkownicy w firmach powinni skontaktować się ze swoim dostawcą i sprawdzić warunki umowy zakupu. Produktu nie należy usuwać razem z innymi odpadami komercyjnymi.

