

\* Some contents of this manual may differ from your phone depending upon the software of the phone or your service provider.



**CELLULAR PHONE  
SCH-A650  
User's Manual**

Draft version  
(2003/06/04)



## FCC RF EXPOSURE INFORMATION

In August 1996 the Federal Communications Commission (FCC) of the United States with its action in Report and Order FCC 96-326 adopted an updated safety standard for human exposure to radio frequency electromagnetic energy emitted by FCC regulated transmitters. Those guidelines are consistent with the safety standards previously set by both U.S. and international standards bodies. The design of this phone complies with the FCC guidelines and these international standards.

Use only the supplied antenna or one that is approved. Unauthorized antennas, modifications, or attachments could impair call quality, damage the phone, or result in a violation of FCC regulations.

Do not use the phone with a damaged antenna. If a damaged antenna comes into contact with the skin, a minor burn may result. Please contact your local dealer for a replacement antenna.

### Body-worn Operation

This device was tested for typical body-worn operations using the optional belt-clip/holster placed 1.8cm from the body. To comply with FCC RF exposure requirements, a minimum separation distance of 1.8 cm must be maintained between the user's body and the back of the phone, including the antenna, whether extended or retracted. The use of belt-clips, holsters or similar accessories should not contain metallic components. The use of accessories that do not satisfy the requirements may not comply with RF exposure requirements, and should be avoided.

### Vehicle Mounted External Antenna (optional, if available.)

A minimum separation distance of 7.9 inches (20cm) must be maintained between a person and the vehicle mounted external antenna to satisfy FCC RF exposure requirements.

For more information about RF exposure, please visit the FCC web site at [www.fcc.gov](http://www.fcc.gov)

## Table of Contents

Important Safety Precautions .....	7
Unpacking .....	9
<b>Your Phone</b>	
Phone Layout .....	10
Display .....	13
Backlight .....	15
LED Indicator .....	16
<b>Getting Started</b>	
Using the Battery .....	17
Switching the Phone On or Off .....	21
Using the Soft Keys .....	22
Your Phone's Modes .....	23
<b>Call Functions</b>	
Making a Call .....	26
Emergency Dialing .....	27
Redialing the Last Number .....	27
Making a Call from Phonebook .....	28
Prepend Dialing .....	28
Speed Dialing .....	29
Pause Dialing .....	31
Voice Dialing .....	34
Adjusting the Volume .....	35
Answering a Call .....	36
Options During a Call .....	37
Using Caller ID .....	38
Viewing Missed Calls .....	38
Call Waiting .....	39
Three-Way Calling .....	40

## Entering Text

Changing the Text Input Mode .....	42
Using the T9 (English) Mode .....	43
Using the Alphabet Mode .....	45
Using the Symbol Mode .....	47
Using the Number Mode .....	47

## Using the Menus

Accessing a Menu Function by Scrolling .....	48
Accessing a Menu Function by Using Its Shortcut .....	49
List of Menu Functions .....	50

## Calls

Outgoing (MENU 1-1) .....	53
Incoming (MENU 1-2) .....	54
Missed (MENU 1-3) .....	55
Erase Logs (MENU 1-4) .....	55
Call Timer (MENU 1-5) .....	56

## Phone Book

Find (MENU 2-1) .....	57
Add New Entry (MENU 2-2) .....	59
Rename Group (MENU 2-3) .....	61
My Phone Number (MENU 2-4) .....	62
Memory (MENU 2-5) .....	62

## Messages

Send New Message (MENU 3-1) .....	64
Voice (MENU 3-2) .....	67
Inbox (MENU 3-3) .....	68
Outbox (MENU 3-4) .....	69
Draft Message (MENU 3-5) .....	70
Saved Message (MENU 3-6) .....	70
Web Alert (MENU 3-7) .....	71
Message Setting (MENU 3-8) .....	72

## Wireless Web

About the Web Browser .....	75
Get In Web (MENU 4-1) .....	76
Prompt (MENU 4-2) .....	81
Get it Now .....	82

## Planner

Today (MENU 5-1) .....	85
Scheduler (MENU 5-2) .....	87
Jump To Date (MENU 5-3) .....	89
To Do List (MENU 5-4) .....	90
Memo Pad (MENU 5-5) .....	91
Count Down (MENU 5-6) .....	92
Alarm Clock (MENU 5-7) .....	94
World Time (MENU 5-8) .....	95
Calculator (MENU 5-9) .....	96

## Display

Animation (MENU 6-1) .....	97
Banner (MENU 6-2) .....	97
Backlight (MENU 6-3) .....	98
Contrast (MENU 6-4) .....	98
Auto Hyphen (MENU 6-5) .....	98

## Sounds

Volume/Vibrate (MENU 7-1) .....	99
Ringer Type (MENU 7-2) .....	100
Key Beep (MENU 7-3) .....	101
Alerts (MENU 7-4) .....	101
Power On/Off (MENU 7-5) .....	102
Roam Ringer (MENU 7-6) .....	103
Whisper Mode (MENU 7-7) .....	103

## Voice Kit

Voice Dial (MENU 8-1) .....	104
Voice Memo (MENU 8-2) .....	107
Call Screen (MENU 8-3) .....	108

<b>Setup</b>	
Location (MENU 9-1) .....	112
Network (MENU 9-2) .....	112
Data/Fax (MENU 9-3) .....	114
Security (MENU 9-4) .....	115
Call Answer (MENU 9-5) .....	119
Auto Answer (MENU 9-6) .....	120
Auto Retry (MENU 9-7) .....	120
Language (MENU 9-8) .....	120
Clock Set (MENU 9-9) .....	121
Version (MENU 9-0) .....	122

## Health and Safety Information

Exposure to Radio Frequency (RF) Signals .....	123
For Body Operation .....	125
Precautions When Using Batteries .....	126
Road Safety .....	128
Operating Environment .....	130
Potentially Explosive Environment .....	133
Emergency Calls .....	134
Other Important Safety Information .....	135
Care and Maintenance .....	136
Acknowledging Special Precautions and the FCC and Industry Canada Notice .....	137

Glossary .....	139
----------------	-----

Index .....	142
-------------	-----

# Important Safety Precautions

Read these guidelines before using your wireless phone. Failure to comply with them may be dangerous or illegal.

## Road Safety at All Times

Do not use a hand-held phone while driving; park the vehicle first.

## Switching Off When Refueling

Do not use the phone at a refueling point (service station) or near fuels or chemicals.

## Switching Off in Aircraft

Wireless phones can cause interference. Using them in aircraft is both illegal and dangerous.

## Switching Off in Hospitals

Switch your phone off near medical equipment. Follow any regulations or rules in force.

## Interference

All wireless phones may be subject to interference, which could affect their performance.

## Special Regulations

Meet any special regulations in force in any area and always switch off your phone whenever it is forbidden to use it, or when it may cause interference or danger (in a hospital for example).

### Sensible Use

Use only in the normal position (held to the ear). Avoid unnecessary contact with the antenna when the phone is switched on.

### Emergency Call

Ensure the phone is switched on and in service. Key in the emergency number for your present location, then press the **SEND** key. You must deactivate any unnecessary features before you can make an emergency call. Give all the necessary information as accurately as possible. Do not cut off the call until given permission to do so.

### Water Resistance

Your phone is not water-resistance. Keep it dry.

### Accessories and Batteries

Use only Samsung-approved accessories and batteries. Use of unauthorized accessories could damage your phone and may be dangerous.

### Qualified Service

Only qualified service personnel may install or repair your phone.

For more detailed safety information, see "Health and Safety Information" on page xx.

# Unpacking

Please Check!!!

Your package contains the following items:



Handset



Battery



Travel Adapter



Position only!!!

Hand Strap



User's Manual



Position only!!!

Leather Case



Position only!!!

Ear-microphone

In addition, you can obtain the following accessories for your phone from your local Samsung dealer:

- Ear-microphone
- Travel adapter
- Slim and standard batteries
- Cigarette lighter adapter
- Hands-free car kit
- Data cable
- Leather case

# Your Phone

## Phone Layout

The following illustrations shows the main elements of your phone:

### Open View



### Closed View



### Key(s) Functions



(Soft keys)

Perform the functions indicated by the text above them, on the bottom line of the display.



Selects the current menu or option.



(Navigation keys)

In Menu Mode, scroll through the menu options and Phonebook memory.

In Standby Mode, directly access you to the following menus:

- Up: **Voice Memo**
- Down: **Message**
- Left: **Get In Web**
- Right: **Get it Now** For more information about this menu, see page 82.



Makes or answers a call.

In Standby Mode, retrieves the last outgoing numbers you dialed. Redials the last outgoing number when pressed twice.

**Key(s)**    **Functions** *(continued...)*

Ends a call. Also switches the phone on and off when held down.

In Menu Mode, cancels your input and returns to Standby Mode.



Deletes characters from the display.

In Menu Mode, returns to the previous menu level.



Enter numbers, letters and some special characters.



In Standby Mode, initiates the voice dialing feature when held down.

While entering text, allows you to change the case.

Also, use this key for the special star calling feature.



In Standby Mode, enters or exits the silent mode when held down.

Also, use this key when you make a call to an automated system, especially when using teleservices.

**Key**    **Functions** *(continued...)*

During a call, adjust the voice volume.

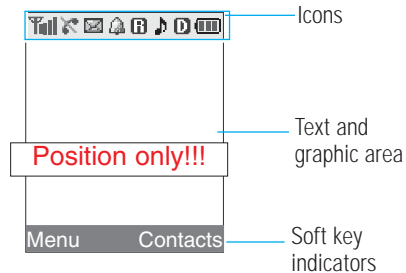
In Standby Mode with the folder open, adjust the keypad tone volume.

In Menu Mode, scroll through the menu options.

## Display

### Layout

The display has three areas: an upper line of various icons, the lower text and graphic area and the last line containing the soft key indicators.



## Icons

Icon images required!!!



**Signal Strength** : Shows the received signal strength. The greater the number of bars, the better the signal.



**Service**: Appears when a call is in progress.



**No Service**: Appears when you are outside a service area. When it appears, you cannot make or receive calls.



**New Message**: Appears when a new message is received.



**Alarm**: Appears when you set an alarm to ring at a specified time.



**Roaming**: Appears when you are out of your home area and have logged onto a different network, when traveling in other countries, for example.



**Ringer Off**: Appears when the ringer volume is turned off.

**GPS (911 only)**: represents Global Positioning Service (GPS) for 911.

**GPS**: Indicates GPS is on for location.



**Vibration**: Appears when you set the ringer volume for calls to **Vibrate** or **High+Vib** or when the phone is in the silent mode.



**Silent mode**: Indicates when the phone is in the silent mode.



**1x Mode**: Indicates that your phone is sending or receiving data at a high speed.



**Battery Status**: Shows the level of your battery. The more bars you see, the more power you have left.

## Backlight

The display and the keypad are illuminated by a backlight. When you press any key or open the folder, the backlight illuminates. It turns off if no key is pressed within a given period of time, depending on the **Backlight** option set in the **Display** menu. The backlight remains on at all times when the phone is connected to an optional car kit.

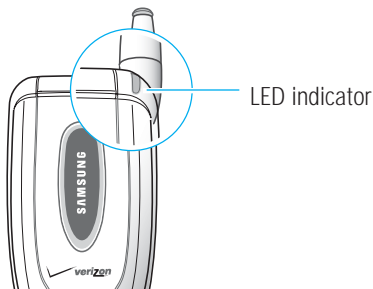
To specify the length of time for which the backlight is active, set the **Backlight** menu (**MENU 6-3**). See page xx for further details.



**Note:** In Standby Mode or Talk Mode, the display automatically turns off after some time, depending on your setting in the **Backlight** menu to conserve your battery power. Press any key to turn the display on.

## LED Indicator

The LED indicator is on the top right of the phone. It flashes to indicate incoming calls or messages. The light also glows for a few seconds when you turn the phone on or off and turns to red to indicate that the battery is being charged.



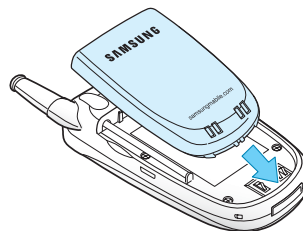
# Getting Started

## Using the Battery

Your Samsung phone comes packaged with a partially charged, rechargeable Lithium Ion (Li-ion) battery.

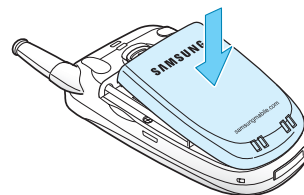
## Installing the Battery

1. Place the battery back on the phone so that its tabs match the grooves on the phone.



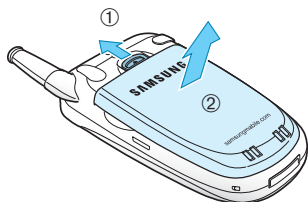
2. Gently push the top end of the battery down until you hear it clicks into place.

Make sure that the battery is correctly installed before switching on the phone.



## Removing the battery

1. If necessary, switch off the phone by holding down the **End** key until the power-off image displays.
2. Push the battery release latch up and pull the battery away.



## Charging the Battery

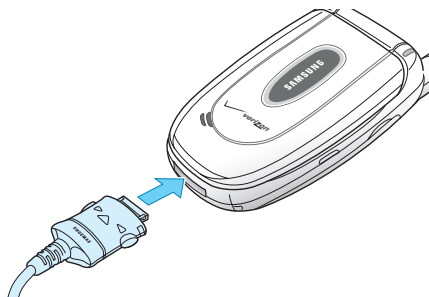
The travel adapter is provided with your phone to allow you to charge your phone's battery from a standard AC wall outlet. Use only approved batteries and chargers.

**Note:** You need to fully charge the battery before using your phone for the first time.

You can use your phone while the battery is charging, but this increases the time it takes to charge the battery. An "empty" standard battery can be fully charged in approximately 4 hours.

To charge the battery:

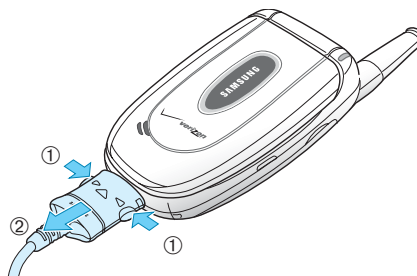
1. With the battery in position on the phone, plug the connector from the travel adapter into the jack at the bottom of the phone.




2. Plug the adapter into a standard wall outlet.


The battery begins charging immediately, and the service light turns on red while the battery is charging.

3. When charging is finished, the service light turns on green. Unplug the adapter from the power outlet and from the phone.



## Low Battery Indicator

You can easily tell if your battery needs to be recharged by checking the Battery Status icon () at the upper-right corner of your phone's display. The presence of all three bars indicates a full charge, two bars indicates a smaller charge, and one bar indicates an even smaller charge.

When the battery charge level becomes low, the battery sensor blinks an empty Battery Status icon () and sounds a warning tone. If the battery level becomes too low, the phone automatically turns off. When this happens, you lose whatever you are doing and your phone call cuts off. Watch the Battery Status icon and make sure that your battery is adequately charged.

## Battery Talk Time and Standby time


Battery times can vary depending on operating conditions, usage, signal strength and backlight setting. Talk time usage decreases standby time.

- Talk time: xx hours
- Standby time : xx hours

## Switching the Phone On or Off

1. Press and hold the **END** key until the power-on image displays to switch the phone on.

The LED indicator on the top right of the phone turns on red and an alert sounds. When the system locates services, the greeting message displays along with the date and time. You can now place and receive calls.

If the phone is out of service, the No Service icon () appears on the display. In this case, you cannot make and receive calls. You can try again later when service is available.

**Note:** To change the language, use the **Language** menu (**MENU 9-8**). For further details, see page xx.



2. When you wish to switch the phone off, press and hold the **END** key more than two seconds.

### WARNING!

Do not switch the phone on when mobile phone use is prohibited or when it may cause interference or danger.

**Note:** As with any other radio-transmitting device, do not touch the antenna unnecessarily when the phone is switched on. Contact with the antenna affects the call quality and may cause the phone to operate at a higher power level than otherwise needed.

## Using the Soft Keys

Your phone offers a set of functions that allow you to customize your phone. These functions are arranged in menus and sub-menus, accessed using the two soft keys marked  and . Each menu and sub-menu allows you to view and alter the settings of a particular function.

The roles of the soft keys vary according to the current context; the label on the bottom line of the display just above each key indicates its current role.

### Example:



Press the left soft key to access Menu Mode.

Press the right soft key to find a number in your Phonebook.

## Your Phone's Modes

### Standby Mode

Standby is the most basic state of your phone. The phone goes into Standby Mode after you turn it on or whenever you briefly press the **END** key. When your phone is in Standby Mode, you will typically see the greeting message and the current date and time. If you enter a phone number, you can press the **SEND** key to dial it or press the **Save** soft key to save it in the internal Phonebook.

Press the **END** key at any time to return to Standby Mode. Be careful; if you are on a call when you press the **END** key, the call disconnects and the phone returns to Standby Mode.

### Talk Mode

You can place and answer calls only when your phone is turned on. During a call, the phone is in the talk mode. While you are in the talk mode, pressing the **Option** soft key gives you a list of options. See page xx for details.

## Power Save Mode

Your phone comes with a Power Save feature that is automatically activated if your phone is unable to find a signal after 10 minutes of searching. While this feature is active, the phone's battery charge is conserved. The phone automatically rechecks for a signal periodically. To manually force the phone to recheck for a signal, press any key.

## Lock Mode

When you lock your phone using the **Lock Phone** menu (**MENU 9-4-1**) in the **Setup** menu, you cannot use the phone. In the lock mode, you can receive messages and calls, but you cannot place an outgoing call until you unlock the phone. To unlock the phone, you need to enter the lock code.

For details about locking and unlocking your phone, see page xx.

## Silent Mode

Silent Mode disables all of the sounds on the phone. This feature is best used in situations where the phone might disturb others, such as in a meeting, at a library or in a theater. You can switch your phone to the silent mode with one touch of a key.

In Standby Mode, press and hold the **#** key until "Entering Silent Mode" and the Vibration indicator (🔇) display.

To exit and reactivate the previous sound settings, press and hold the **#** key again until "Exit Silent Mode" appears. The Vibration indicator no longer displays.

**Note:** When you turn the phone off, the silent mode is automatically deactivated.

# Call Functions

## Making a Call

Cannot be checked with the current phone!!!

In Standby Mode, enter the area code and phone number and press the **SEND** key.

**Note:** When the **Auto Retry** menu (**MENU 9-7**) have been enabled, the phone automatically retries to make the call when the line is busy or the remote person does not answer. See page xx.

While entering a number, press the **Option** soft key to use the following menu options:

**P pause:** enters a hard pause.

**T pause:** enters a 2-second pause.

## Correcting the Number

To clear the	Press the
last digit displayed	<b>CLR</b> key.
whole display	<b>CLR</b> key for more than one second.

## Ending a Call

When you want to finish your call, briefly press the **END** key or close the folder.

If you end the call by pressing the **END** key, the call time, or the length of the call, displays briefly and the phone returns to Standby Mode.

## Emergency Dialing

You can place emergency calls from your emergency number list even if your phone is locked or all of the outgoing calls are restricted.

For further details about emergency numbers, see page xx.

## Redialing the Last Number

To redial the last call you made, press the **SEND** key twice quickly.

Your phone stores the last 10 numbers of the dialed calls. To recall any of these numbers:

1. In Standby Mode, press the **SEND** key. The list of the recent outgoing calls displays.
2. Press the Up or Down key until you find the name or number you want.
3. Press the **SEND** key to dial the number displayed.

## Making a Call from Phonebook

---

You can store the phone numbers you called regularly in the phone's memory, which is called Phonebook. You then simply recall the number to dial.

For further details about the Phonebook feature, see page xx.

## Prepend Dialing

---

The prepend option lets you add digits, such as area codes and network feature activation codes, to a phone number that is in your call logs.

To prepend a phone number stored in your phone:

1. Access outgoing call logs by pressing the **SEND** key or Phonebook entries by referring to page xx.
2. Scroll to the number you want to dial.
3. Press the **Option** soft key to access the options.
4. Press the **3** key to select the **Prepend** option.
5. Enter the area code or feature code.
6. Press the **SEND** key to dial the number.

## Speed Dialing

---

Once you have stored phone numbers in the Phonebook memory, you can dial them easily whenever you want.

**Note:** When several numbers are saved in one name entry, the first number you entered is automatically specified as a speed dial number. To change the speed dial number, use **Speed dial** of the Phonebook options; see page xx.

### One-Touch Dial

Memory locations 001 through 009 are special one-touch locations. You can dial the phone numbers stored in the Phonebook memory from 001 through 009 simply by pressing one key.

Press and hold the third digit of the memory location containing the number to be dialled.

For example: Location no. 009  
Press the **9** key and hold.

The number (and name) stored displays, and then dialled.

## Two-Touch Dial

Memory locations 010 through 099 are special two-touch locations.

Press the second digit briefly, then hold down the third digit of the memory location.

For example: Location no. 023

Press the **2** key briefly and hold down the **3** key.

The number (and name) stored displays, and then dialed.

## Three-Touch Dial

Memory locations 100 through 500 are special three-touch locations.

Press the first two digits briefly, then hold down the third digit of the memory location.

For example: Location no. 123

Press the **1** key and the **2** key briefly, then hold down the **3** key.

The number (and name) stored displays, and then dialed.

## Pause Dialing

When you call an automated system, like a banking service, you are often required to enter a password or account number. Instead of manually entering the numbers each time, you can store the numbers in your Phonebook, separated by special characters which are called pauses.

There are two kinds of pauses that can be entered on your phone:

- P pause: A hard pause stops the dialing sequence until you press the **SEND** key.
- T pause: A 2-second pause stops the dialing sequence for two seconds and then automatically sends the remaining digits.

**Note:** Multiple two second pauses can be entered to extend the length of a pause. Keep in mind that pauses count as digits towards the 32 digit dialing maximum.

## Storing Pauses in a Phonebook Entry

To store a number in your Phonebook that contains pauses:

1. Enter the phone number you want to store, such as the bank's teleservice phone number.
2. Press the **Option** soft key to access the options.



3. Select the required pause type using the Navigation keys, and then press the **OK** key.
4. Enter the digits that need to follow the pause, such as your account number.
5. Repeat steps 2 through 4 to add more pauses and numbers, if necessary.
6. Store the number in your Phonebook as you normally would by pressing the **OK** key and following from step 2 on page xx.

### Pause Dialing from a Stored Phonebook Entry

1. Dial the number of the service from Phonebook.
2. If you stored the number using a hard pause(s), wait for the appropriate prompt from the number you are calling. When prompted, press the **SEND** key to send the DTMF (Dual tone multi-frequency) number that follows your pause.

If you stored the number using a T pause(s), your phone transmits the number that follows the "T" pause two seconds after the connection.

3. "SENDING DTMF" flashes on the display and the transmitted tone sounds.
4. Repeat from step 2, if necessary.

### Manual Pause Dialing

You can enter pauses manually during the dialing process.

1. Enter the phone number of the service you want to call, such as a bank's teleservice phone number.
2. Press the **Option** soft key to access the options.
3. Select the required pause type using the Navigation keys, and then press the **OK** key.
4. Enter the number to be sent after the pause and then press the **SEND** key to dial the first number.
5. For a hard pause, press the **SEND** key again at the prompt to send the additional number after connecting.

If you enter the number using a T pause(s), the phone sends the number that follows the pause two seconds after the connection.

## Voice Dialing

Before using the voice dialing feature, you must record names and numbers on your phone using the **Voice Dial** menu (**MENU 8-1**). For further details, see page xx.

1. To place a call, press and hold the **\***  key or open the folder, depending on the **Set Active** menu (**MENU 8-1-4**). See page xx.
2. At a voice prompt, say a name into the microphone.
  - If the phone recognizes the name, the phone attempts a connection.
  - If the phone does not recognize the name, it sounds an alert tone and prompts for the name again.
3. The phone dials the corresponding number.

## Adjusting the Volume

During a call, if you want to adjust the voice volume, use the Volume keys on the left side of the phone.

Press the **▲** key to increase the volume level and the **▼** key to decrease the level.



In Standby Mode, you can also adjust the keypad tone volume using these keys.

## Answering a Call

---

When somebody calls you, the phone rings and displays the incoming call animation.

If the caller can be identified, the caller's phone number, or name if available in your Phonebook, displays.

1. To answer a call, open the folder and press the **SEND** key.

If the **Call Answer** menu (**MENU 9-5**) is set to **Any Key**, you can answer a call by pressing any key except for the **END** key.

When the menu option is set to **Folder Open**, you can simply open the folder to answer the call.

For details about the **Call Answer** menu, see page xx.

2. To end the call, press the **END** key or simply close the folder.

### Notes:

- You can answer a call while using Phonebook or menu functions. The current operation stops.
- If you cannot answer incoming calls, you can set the phone to answer the call by playing a greeting message and record callers' messages. For further details, see page xx.

## Options During a Call

---

Your phone provides you with a number of functions that you can use during a call.

Press the **Option** soft key during a call to access the following options:

**Mute/Unmute:** allows you to switch your phone's microphone off, so that the other person cannot hear you.

Example: You wish to say something to another person in the room but do not want the other person to hear you.

**Calls:** allows you to access the **Calls** menu. For details, see page xx.

**Phone Book:** allows you to access the **Phone Book** menu. For details, see page xx.

**Silent/Quit:** does not transmit the key tones. It allows you to press keys without hearing annoying key tones during a call.

**Send Tel #:** sends your telephone number to the other person or automated services.

**My Phone #:** displays the phone's own number.

**Version:** displays the version of the software and hardware that is being used on the phone.

**Voice Privacy:** gives you the option of having enhanced or standard privacy.

**Location:** displays whether GPS is set to **On** or **911 only**.

**Send DTMF:** allows you to manipulate the audible keypad tones.

## Using Caller ID

This feature tells you who is calling you by displaying the caller's number when the phone rings. If the name and number are stored in your Phonebook, the corresponding name is also displayed. If you call someone who has this feature, your phone number displays on her/his phone.

**Note:** Contact your service provider to set up the Caller Line Identification service.

## Viewing Missed Calls

If you fail to answer a call for any reason, the phone indicates the missed call by displaying a text notification on the screen. Additionally, if caller information is available, a Missed entry is created.

Press the **SEND** key to access the recent calls list, or the **END** key to clear the message and return to Standby Mode.

To view missed calls, access the **Missed** menu (**MENU 1-3**). For details, see page xx.

## Call Waiting

Call Waiting lets you receive a second call during a conversation. Your phone notifies you of a waiting call by beeping and displaying "Call Waiting."

Your network provides you with the option of turning the Call Waiting feature on and off, if you have subscribed to the service. Call Waiting is on by default in the phone. If you choose to have a undisturbed conversation, simply turn off the feature for the current call.

**Note:** Contact your service provider to activate the Call Waiting service.

To answer a waiting call during a call:

1. When you hear a beep telling that you have a waiting call, press the **SEND** key. The phone connects the calling person and places the current call on hold.
2. Press the **SEND** key again to switch between the two calls.

**Note:** If you do not respond to a Call Waiting notification, the phone will forward the call to voice mail server or another number that you have set up. Contact your service provider for more information.

## Three-Way Calling

---

This feature enables you to conduct conference calls with two separate people at the same time. The phone records each participant into the Outgoing Calls Log. Also, You are billed call time for each outgoing call separately.

**Note:** Contact your service provider to activate Three-Way Calling.

To place a Three-Way call:

1. During a conversation, press the **SEND** key. The phone places the other person on hold.
2. Enter the phone number for the third person, and then press the **SEND** key. The phone dials the third person.
3. When you are connected to the person, press the **SEND** key again to begin your three-way call.

If one of the callers (not you) hangs up, you and remaining caller stay connected. If you initiated the call and you hang up first, all three participants are disconnected.

## Entering Text

At many times when using your phone, you will need to enter text, such as when storing a name in Phonebook, creating your personal greeting or scheduling events on your calendar. You can enter alphanumeric characters into your phone using your phone's keypad.

Your phone has the following text input modes:

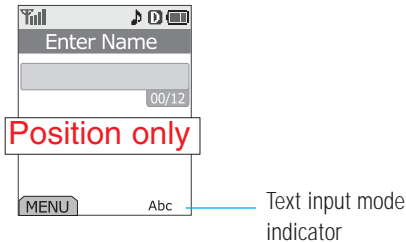
- **T9(English):** This mode allows you to enter words with only one key press per letter. Each key on a keypad has more than one letter - a single press on the **5** key could be J, K or L. The T9 mode automatically compares your key presses to an internal linguistic database to determine the correct word. The T9 mode requires far fewer keystrokes than the traditional multi-tap method, Alphabet mode.
- **Alphabet:** This mode allows you to enter letters by pressing the key labeled with the letter you want to enter once, twice, or three times until it appears on the display.
- **Symbol:** This mode allows you to enter special characters.
- **Number:** This mode allows you to enter numbers.

**Note:** The T9 mode supplies an appropriate language database as your language setting menu (**MENU 9-8**).

## Changing the Text Input Mode

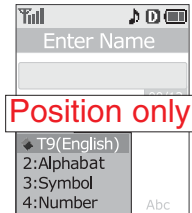
When you are in a field that allows characters entry, you should notice the text input mode indicator on the display.

Example: Entering a name for a Phonebook entry



To change to another text input mode:

1. Press the **Option** soft key.



2. Scroll to the mode by pressing the Navigation keys.
3. To select the highlighted mode, press the **OK** key. If you want to exit the menu without changing to a new mode, press the **CLR** key.

The selected text input mode indicator appears on the display.

## Using the T9 (English) Mode

To type a word, press keys corresponding to the letters you need. Remember the following as you are typing:

1. Press alphanumeric keys on the keypad just once per letter. For example, to enter "Hello," press the **4**, **3**, **5**, **5** and **6** keys.

The word you are typing appears on the display. It may change with each key press.

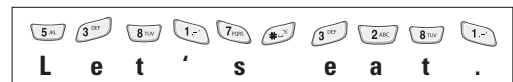
2. Type to the end of the word before editing or deleting any keystrokes.
3. Put a space between words by pressing the **#** key.

If the word that appears on the display is not the one that you desire, press the **0** key one or more times to display alternative word choices for the keys you have typed. For example, both "of" and "me" use the **6** and **3** keys. The phone displays the most commonly used choice first.

4. Continue entering the next word.

### Smart Punctuation

Periods, hyphens, and apostrophes are available by pressing the **1** key. The T9 mode applies rules of grammar to insert the correct punctuation. Notice that the **1** key is used twice in this example to display two punctuation marks:



## Including a Number

You can include a number between letters without exiting the T9 input mode. Press and hold the corresponding number key.

## Changing the Case

Your phone has three cases:

- **T9Word**: the initial letter is capitalized.
- **T9WORD**: all letters are capitalized.
- **T9word**: all letters are lower case.

Press the **\*** key one or more times to display the appropriate case indicator and begin typing normally.

## Other Usages

- Press the **#** key to insert a space.
- To move the cursor to the left or right through your text, press the Left or Right key.
- Press the **CLR** key one or more times to delete the letters one by one to the left. Press and hold the **CLR** key to clear the display.

## Using the Alphabet Mode

When typing in the Alphabet mode, you need to press the keys labeled with the required letter:

- Once for the first letter
- Twice for the second letter
- And so on

This method is called multi-tap typing.

For example, you press the **2** key three times to display the letter "C" and the **5** key two times to display the letter "K."

The cursor moves to the right when you press a different key. When entering the same letter twice or a different letter on the same key, just wait for a few seconds for the cursor to move to the right automatically, and then enter the next letter.

Refer to the table below for the list of characters assigned on each key.

Key	Characters in the Order Displayed				
1 <sup>st</sup>	. , - ? ! ' @ : 1				
2 <sup>nd</sup>	A	B	C	2	
3 <sup>rd</sup>	D	E	F	3	
4 <sup>th</sup>	G	H	I	4	
5 <sup>th</sup>	J	K	L	5	
6 <sup>th</sup>	M	N	O	6	
7 <sup>th</sup>	P	Q	R	S	7
8 <sup>th</sup>	T	U	V	8	
9 <sup>th</sup>	W	X	Y	Z	9
0 <sup>th</sup>	0				

The characters list displayed in the Send To and Message screen is different.

(Caps Lock mode)

## Including a Number

You can quickly include a number between letters. Press and hold the corresponding number key.

## Changing the Case

Your phone has three cases:

- **Abc**: the initial letter is capitalized.
- **ABC**: all letters are capitalized.
- **abc**: all letters are lower case.

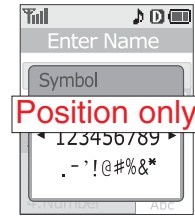
Press the **\*** key one or more times to display the appropriate case indicator, and begin typing normally.

## Other Usages

- Press the **#** key to insert a space.
- To move the cursor to the left or right through your text, press the Left or Right key.
- Press the **CLR** key one or more times to delete the letters one by one to the left. Press and hold the **CLR** key to clear the display.

## Using the Symbol Mode

The symbol mode enables you to enter symbols.



You can display more symbols by pressing the Left or Right key.

Press the number key corresponding to the symbol you want to enter. The phone automatically switches back to the text entry mode used just prior to selecting the symbol mode.

## Using the Number Mode

The number mode enables you to enter numbers.

Press the keys corresponding to the digits you want to enter and manually switch back to the text entry mode of choice. For details about changing the mode, see page xx.



# Using the Menus

Your phone offers a range of functions that allow you to tailor it to your needs. These functions are arranged in menus and submenus.

The menus and submenus can be accessed by scrolling or by using the shortcuts.

## Accessing a Menu Function by Scrolling

1. In Standby Mode, press the **Menu** soft key to access Menu Mode.
2. Scroll with the Navigation keys to reach the main menu; for example, **Setup**. Press the **OK** key to enter the menu.
3. If the menu contains any submenus; for example, **Language**, find the one you want by scrolling with the Up or Down key. Press the **OK** key to enter the submenu.

If the menu you have selected contains submenus, repeat this step.

4. Scroll with the Up or Down key to find the setting of your choice.
5. Press the **OK** key to confirm the chosen setting.

### Notes:

- You can return to the previous menu level by pressing the **Back** key.
- You can exit the menu without changing the menu settings by pressing the **END** key.

## Accessing a Menu Function by Using Its Shortcut

Menu, submenu and setting options are numbered and can be quickly accessed by using their shortcut numbers.

**Note:** The numbers assigned to each menu function are indicated on the list on page xx.

1. In Standby Mode, press the **Menu** soft key to access Menu Mode.
2. Enter the first digit of the shortcut number. Repeat this for each digit of the shortcut number.

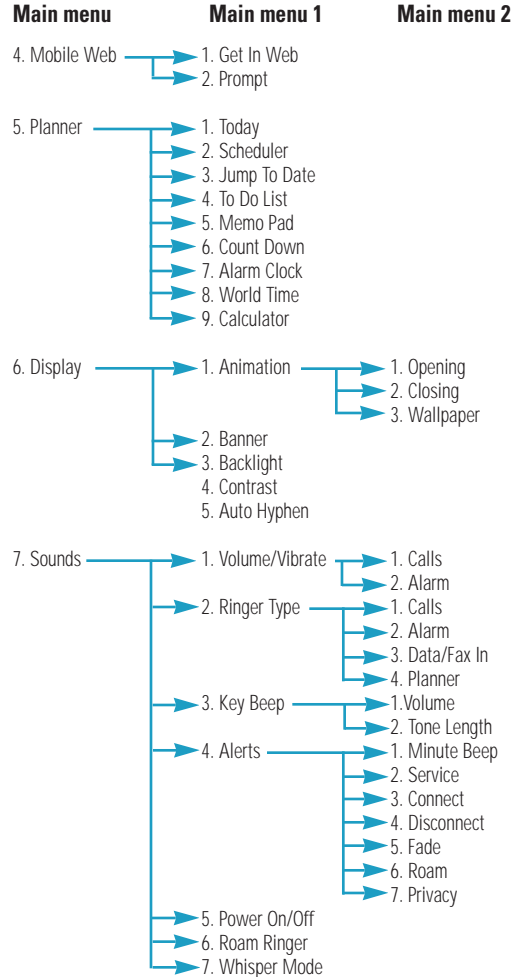
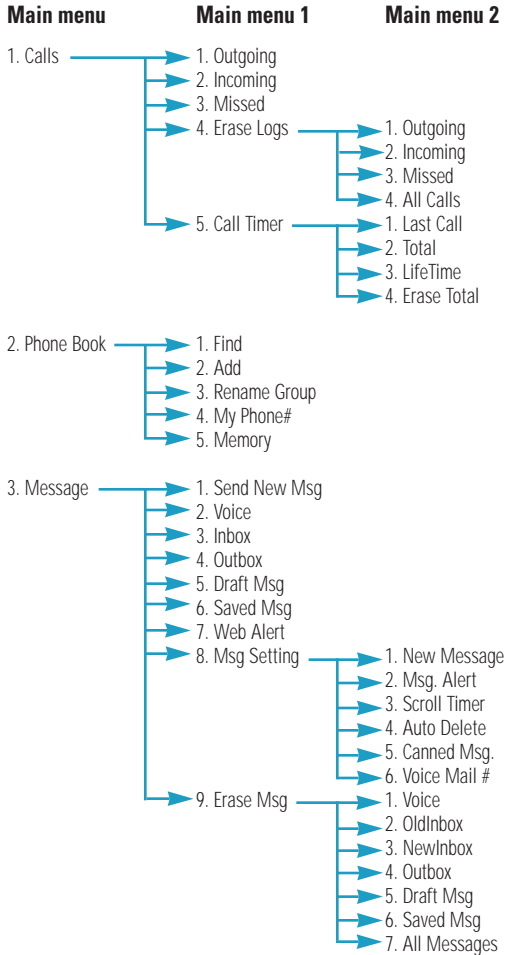
Example: Accessing the **Language** menu

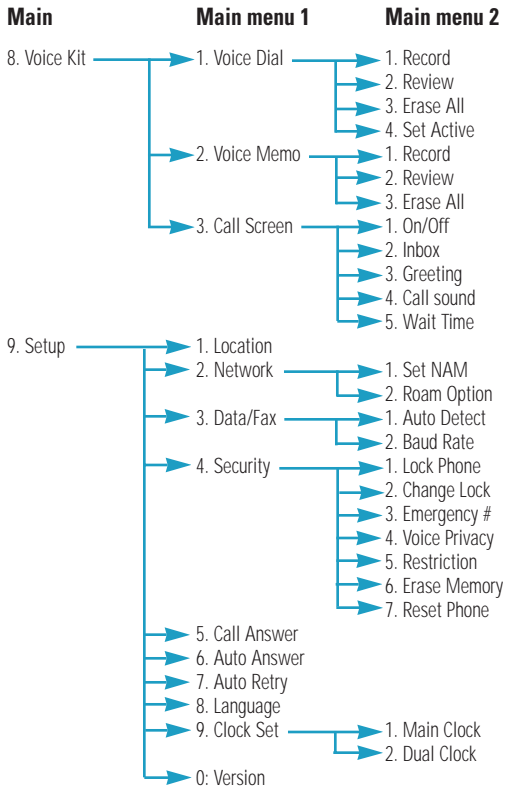
Press the **9** and **8** keys.

**9** selects **Setup** and **8** selects **Language**.

3. Find the setting of your choice by pressing the Up or Down key.
4. Press the **OK** key to confirm the chosen setting.

## List of Menu Functions





## Calls

Cannot be checked with the current phone!!!

You can use the **Calls** menu to:

- view and dial the last calls you dialed, received or missed.
- erase the numbers in the call log memory.
- view the length of calls.

## Outgoing

*MENU 1-1*

The phone stores up to 20 of the last calls you dialed. When you access this menu, a list of the outgoing calls displays.

1. Press the Navigation keys to find a number, or name if it is saved in Phonebook.
2. Press the **OK** key to confirm the highlighted number. The dialed number, or name if it is saved in Phonebook, displays along with the date and time when the call was made.

To	Press the
place a call to the selected number	<b>SEND</b> key.
use the options	<b>Option</b> soft key. For details, see the next page.
exit the call log	<b>END</b> key.

When you press the **Option** key on the call log screen, the following options are available:

**Talk:** dials the number.

**Save:** allows you to save the number in Phonebook.

**Prepend:** allows to add an area code or feature code to the number before dialing the number. See page xx for details.

**Erase:** erases the number.

## Incoming

*MENU 1-2*

This menu lets you view up to 20 of the last calls you received if you are subscribed to the Caller Line Identification service. Contact your service provider for further details about this service.

When you access this menu, a list of the incoming calls displays.

For more information about scrolling through the list and accessing the call log, see “Outgoing” on page xx.

## Missed

*MENU 1-3*

If Caller Line Identification service is available, your phone keeps a list of the last 20 incoming calls that you failed to answer. Contact your service provider for further details about the service.

When you access this menu, a list of the missed calls displays.

For more information about scrolling through the list and accessing the call log, see “Outgoing” on page xx.

## Erase Logs

*MENU 1-4*

You can erase the entries stored in each of the three call logs or all three logs at once.

When a confirming message displays, select **Yes** to erase the selected log or all of the logs. If you want to cancel the selection, select **No**. Press the **OK** key to confirm the selection.

## Call Timer

*MENU 1-5*

Your phone records the amount of air time, or talk time, used. Using this menu, you can view the number of the calls to or from your phone, and the air time for all of the calls. You can easily erase the call time record at any time. This menu is convenient for estimating your usage.

**Note:** This feature is not intended to be used for billing purposes.

The following options are available:

**Last Call:** shows the time of the last call.

**Total:** shows the number of all calls made to or from your phone and the total duration of the calls since the time counter was last set to zero by using the **Erase Total** option.

**LifeTime:** shows the number and total duration of all calls made to or from your phone since the phone was shipped from the factory.

**Erase Total:** erases the "Total" time measurement and resets the air time counter.

## Phone Book

Phonebook allows you to store frequently used phone numbers and the associated names in your personal directory to make it easy for you to make a call without having to remember or enter the phone number. You can store up to 500 entries including E-mail and URL addresses.

**Note:** You cannot store numbers in locations 0, 311 or 411 of your Phone Book.

## Find

*MENU 2-1*

This menu allows you to find an entry in your Phonebook.

You can quickly access this menu by pressing the **Contacts** soft key in Standby Mode.

1. Press the Left or Right key to scroll to the method you want to use.
  - **By Name:** Enter the first few letters of the name you want with the Alphabet mode. The Phonebook entries are listed starting with the first entry matching your input.
  - **By Entry:** Enter the location number of the number you want to find, using the numeric keys.
  - **By Group:** Press the Down key and select the group containing the entry you want to find, using the Left or Right key. The phone lists all of the entries in the selected group.

- If necessary, press the Up or Down key to scroll through the entries.
- When the entry you want highlights, press the **OK** key to access the entry. The phone shows the details about the name.

4. <b>To</b>	<b>Press the</b>
place a call to the selected number	<b>SEND</b> key.
use the options	<b>Option</b> soft key. For details about the options, see below.

When you press the **Option** soft key on the details screen, the following options are available:

**Talk:** places a call to the number.

**Edit:** allows you to change the phone number, name, location number, label category and so on.

**Erase:** erases the selected entry.

## Add

MENU 2-2

This menu allows you to store a number with a name in your Phonebook. You can save a person's numbers, such as workplace number, mobile number and fax number, into one entry. A Phonebook entry can contain up to six numbers, one in each category.

### Creating a New Entry

- When the display screen prompts you to confirm **Number** or **E-mail**, select one of them by using the Navigation keys, and then press the **OK** key.
- Enter a phone number or e-mail address and press the **OK** key.
- Select **New Entry** by pressing the Navigation keys and press the **OK** key to confirm to add a new entry.
- Select the label to assign to the phone number by pressing the Navigation keys, and then press the **OK** key.
- Highlight the desired option you want to customize by using the Up or Down key, and set each option as needed by using the Left or Right key and the number keypad. The following options are available.
  - No Name:** enter the desired name. You can enter up to 22 characters. For further information about entering characters, see page xx.
  - Location:** the first available location displays. If necessary, enter the location number using the number keypad.

- **Home/Office/Mobile/Pager/Fax/Fax:** enter the desired numbers, if necessary.
  - **Alias:** ?????????????????? Data required!!!
  - **E-mail:** enter the person's e-mail address. You can enter up to **48** characters.
  - **SpeedDial:** select the priority number to be speed-dialed by the location number.
  - **Group:** select the desired caller group. You have 5 choices of the group. Select **No Name** if you don't want to set the group.
  - **Inactive:** select the unique ringer type for the entry. By selecting a different ringer, incoming voice calls having a caller ID can be distinguished from those that do not.
  - **Picture ID:** select the image you want to assign to the phone number. If you don't want to use the image, select **Image off**.
6. Press the **OK** key to save the entry.

## Storing Phone Numbers at Call's End

To store a phone number at the end of your call:

1. Press the **END** key to end the call. The call time and the phone number display.
2. To store the phone number, press the **OK** key.
3. To complete storing the number, follow the procedure from step 2 in "Creating a New Entry" on page xx.

## Adding a Number into an Existing Entry

1. Enter a number and press the **OK** key.
2. Select **Find** by using the Navigation keys, and then press the **OK** key.
3. Scroll to the entry where you want to add a number by pressing the Up or Down key. Press the **OK** key.
4. To complete storing the number, follow the procedure from step 3 in "Creating a New Entry" on page xx.

## Rename Group

*MENU 2-3*

This menu allows you to change the settings for the caller groups.

1. Scroll to the group you want to edit using the Up or Down key and press the **OK** key.
2. Clear the current name using the **CLR** key.
3. Enter a name and press the **OK** key.
 

For further details about how to enter text, see page xx.
4. Repeat steps 1 through 3, if necessary.

## My Phone Number

*MENU 2-4*

This menu shows you your phone number.

After viewing, press the **OK** key to return to the previous screen.

## Memory

*MENU 2-5*

This menu shows you how many Phonebook and Voice Dial locations are used or empty.

After viewing, press the **OK** key to return to the previous screen.

# Messages

Cannot be checked with the current phone!!!

Your phone can receive voice mail notification, text or multimedia messages and pages. It also can send messages and pages if your system supplier provides this service.

Your phone can store up to 130 messages total in the Inbox, the Outbox, the Draft and the Saved Message box. When the memory is full, a warning message displays and the phone rejects additional messages until you erase the obsolete ones.

When the phone receives a message, an alert sounds, a text notification displays along with the name and phone number of the caller if available. The New Message icon (✉) remains on the screen until you read the new text messages or numeric pages, or you listen to the new voice mail messages.

Messages are received even when your phone is in the lock mode. However, the screen does not display information about the message. To access a message, you must unlock the phone. During a conversation and you receive an incoming message, your phone automatically mutes the ringer. This is to avoid ringing in your ear while you are trying to converse.

You can quickly enter the **Messages** menu by pressing the Down key in Standby Mode.



## Send New Message

MENU 3-1

You can create a short text message and send it to other mobile phones.

**Note:** Message transmission is available only when your phone is operating in a digital network and if service is supported by your service provider.

1. Enter a destination number or an e-mail address using the numeric keys and press the **OK** key.  
Pressing **Option** soft key allows you to change the input mode or enter **.edu**, **.net** or **.com**.
2. Enter the message contents. For further details about how to enter text, see page xx.

When you press the **Option** key, you can change the input mode and use the following options:

- **Text Format:** allows you to format the style of the text. For the **Size** attribute, the **Small**, **Medium** and **Large** sizes are available. For the **Align** attribute, you can select **Right**, **Left**, **Center** or **Default**. For the **Bold**, **Italic**, **Underscore** and **Strikethrough** attributes, select them by pressing the **Check** soft key. The attributes can be combined.
- **Add Media:** allows you to add the required animation, picture or melody to the message. Select the category of the object to be added. In each category, you can select the various factory-set items or choose an item received from other sources, such as the Internet or other phones.

Message options cannot be checked with the current phone!!!

- **Canned Msg:** allows you to use the ten canned messages preset in the **Msg. Alert** menu; for details, see page xx.
3. When you finish entering the message, press the **OK** key.
  4. To select an option, press the Navigation keys, and then press the **OK** key.

The following options are displayed:

- **Edit Send To:** allows you to change the send-to phone number.
- **Edit Text:** allows you to change the message contents you've already entered.
- **Send Options:** displays the following setting options. Scroll to an options using the Up or Down key and change the setting using the Left or Right key.
  - Priority: selects the message priority.
  - Validity: selects how long your message is valid at the SMS center while attempts are made to deliver them to the recipient.
  - Privacy: gives you the option of having enhanced or standard privacy.
  - Delivery Ack: turns the delivery acknowledgement feature on or off. When this is activated, the network informs you whether or not your message has been read by the recipient.
  - Insert Sign.: allows you to attach your name to your message.

- Call Back #: allows you to attach your phone number to the message.
- Def. Delivery: selects how long the delivery of the message will be delayed at the SMS center, if you do not want to sent it immediately.
- **Save in Draft:** allows you to save the draft message as a draft.
- **Save Text:** sets whether or not the phone saves the message in the Outbox after transmission.

**Note:** Some options can be preset in the **New Message** menu option (**MENU 3-8-1**); for details, see page xx.

5. Repeat step 4 to set the message options.
6. After changing the setting options, press the **SEND** key to send the message.
7. When you set the **Save Text** option or **Save In Outbox** option (see page xx) to **Prompt**, the phone asks if you want to save the message. Select **Yes** or **No** and press the **OK** key.

**Note:** Closing the folder or press the **END** key before the message is sent stops the transmission.

## Voice

*MENU 3-2*

When the voice mail list displays, press the Up or Down key to scroll to a voice message and press the **OK** key to listen to the message.

If multiple new voice messages are received but not checked, information of the last one will be displayed. The information display includes the time/date stamp, the number of new voice messages and the callback number.

Press the **Option** soft key to access the following options:

**Listen:** allows you to listen to the voice message. The phone automatically dials the number of your voice mail center.

**Clear Icon:** clears the New Message icon and resets the counter for a new voice message, if necessary. The system resets the counter automatically after you listen to all of the new messages.

## Inbox

*MENU 3-3*

Your phone can store up to 50 messages in the Inbox. When you access the **Inbox** menu, the message list appears.

To view details of a message, press the Up or Down key to scroll to the message on the list and press the **OK** key. If necessary, press the Left or Right key to scan through the contents.

While viewing a message, press the **Option** soft key to use the following options:

**Forward:** allows you to forward the message to another person.

**Delete:** deletes the message from the Inbox.

**Save Text:** allows you to save the message in the ???

**Save addr:** allows you to save the callback number of the message.

**To Saved Msg.:** ????????????????

## Outbox

*MENU 3-4*

Your phone can store up to 50 messages in the Inbox. When you access the **Outbox** menu, the message list appears.

To view details of a message, press the Up or Down key to scroll to the message on the list and press the **OK** key. If necessary, press the Left or Right key to scan through the contents.

While reviewing a message, press the **Option** soft key to use the following options:

**Re-send:** allows you to resend the message. For further details, see page xx.

**Save Msg:** allows you to save the message in ??????

**Cancel:** cancels sending the message if it is sending. ??????

**Delete:** deletes the message from the Outbox.

## Draft Message

*MENU 3-5*

Your phone can store draft messages that are yet to be sent in the Draft Message box. If you save the message contents using the **Draft Msg** menu before sending it (see page xx), you can access them using this menu.

To review a draft message, press the Up or Down key to scroll to it and press the **OK** key.

While reviewing a message, press the **Option** soft key to use the following options:

**Edit:** allows you to edit the message.

**Delete:** deletes the message from the Draft Message box.

## Saved Message

*MENU 3-6*

When you save a message before sending it, or select the Save Msg option in the Inbox or Outbox, the message is saved in this message box.

To review a stored message, press the Up or Down key to scroll to it and press the **OK** key.

While reviewing a message, press the **Option** soft key to use the following options:

**Edit:** allows you to edit the message.

**Delete:** deletes the message from the Saved Message box.

## Web Alert

*MENU 3-7*

When you receive a new Web message from the web server, your phone alerts you and the following options display:

**View:** allows you to access the Web Inbox to display the web message.

**Clear:** Select this option if you do not wish to read the message at this time. You can press the **CLR** key.

To select an option, scroll to it and press the **OK** key. If you select **Clear**, the message is stored in the **Web Alert** menu.

When you access the **Web Alert** menu (**MENU 3-7**), a list of the received web message displays. Press the Up or Down key to scroll to the message you want to view and press the **OK** key. The phone starts the web browser and displays the message contents. If necessary, press the Up or Down key to scan through the contents.

## Message Setting

*MENU 3-8*

In this menu, you can preset several options for using the messaging feature.

### New Message *(MENU 3-8-1)*

You can set up the default settings of the options for creating a new message. The following options are available:

**Save In Outbox:** allows you to set whether or not you want the transmitted message to be saved in the Outbox.

- Not Save: The phone does not save the message.
- Prompt: The phone asks you whether or not you want to save the message.
- Auto Save: The phone automatically saves the message.

**Callback #:** allows you to set the call back number. It is preset to your phone number at the factory.

**Entry Mode:** allows you to select the text input mode between **T9 Word** (T9 English) and **Alphabet**.

**Delivery Ack:** allows you to activate or deactivate the delivery acknowledgement.

**My Signature:** allows you to attach your name to the message.

## Message Alert *(MENU 3-8-2)*

This menu allows you to set alert settings for an incoming messages.

**Volume/Vibrate:** allows you to adjust the alert volume level or select the alert type.

**Type:** allows you to select ringer type from **Voice Mail, Page, Text** and **Web Alert**.

**Reminder:** allows you to set how many times the phone alerts you to an incoming message. **Once, Every 2 min** options are available. Select **Off** if you do not want to be alerted.

### Scroll Timer *(MENU 3-8-3)*

If an incoming message is too long for the display, the phone displays it by scrolling the screen automatically. You can set how often the phone scrolls the message to the next screen.

If you select **Off**, you need to scroll to the next screen manually using the Up and Down keys.

### Auto Delete *(MENU 3-8-4)*

This option allows you to delete your message automatically after viewing it.

To set the phone to warn you before your message is deleted, select **Warning Msg**.

## Canned Messages *(MENU 3-8-5)*

This menu allows you to change the ten canned messages.

1. Scroll to a message on the list by using the Navigation keys, and then press the **OK** key.
2. Change the message as needed. For further details about entering characters, see page xx.
3. When you are finished, press the **OK** key.

## Voice Mail Number *(MENU 3-8-6)*

All unanswered calls to your phone are automatically transferred to the voicemail center, even if your phone is off or in use. You can store the number of the voice mail center in this menu.

You can include a hard or 2-second pause in the number by pressing the **Option** soft key.

# Wireless Web

Cannot be checked with the current phone!!!

## About the Web Browser

Your phone comes equipped with a web browser which makes it possible for you to access the wireless web.

The web browser allows you to access up-to-the minute information through your phone. Browsing the wireless web through your phone is unlike using your computer; site providers have selected only the critical aspects of their sites to present to wireless phone users and they have removed most of the graphics.

Each time you start the web browser, the phone will connect to the wireless web and the Service icon (🌐) will appear on the display. Any time this icon is visible on the display, you are connected to the wireless web and will be billed accordingly. Rates will vary according to your service plan.

The web browser will end the connection after a certain period of network inactivity and will automatically reconnect as necessary. For this reason, you may find that you are billed for several network connections within a single session. This is normal and is designed to minimize your bill.

## Get In Web

MENU 4-1

**Note:** The first time you use the web browser, you will go through a security setup process that takes 3 to 5 minutes. Please follow the on-screen prompts to complete the security setup process. This initial setup process occurs only the first time you access the service.

1. Accessing the **Get In Web** menu (**MENU 4-1**) connects your phone to the wireless web. You can also press the **z** key in Standby Mode.
2. If a reminder appears depending on your setting in the **Prompt** menu (**MENU 4-2**), simply answer **Yes** or **No** by pressing the Left or Right key.
3. Once you are connected, the home page or the last page you visited displays.  
The opening page contents may be different according to your wireless web service provider.
4. To scroll through the screen, use the Up or Down key.

## Exiting the Web Browser

To exit the web browser, simply press the **END** key at any time.

If the **To End** or **Both** option is set in the **Prompt** menu (**MENU 4-2**), you will be prompted whether you want to end the browser call. Simply answer **Yes** or **No** by pressing the Left or Right key.

## Navigating the Web Browser

When you use the web browser, some keys on your phone operate differently than when on a normal phone call.

Here's how the keys work in the Web Browser:



**Navigation key:** Use these keys to scroll to and select browser options. The currently selected option is indicated by an arrow. You can also use them to move the cursor when entering text.



**Clear key:** This key performs two functions:

- Sends you back in the browser. Pressing it once sends you back one page. Pressing and holding this key sends you back to the home page.
- Clears out the entered text or numbers. When entering characters, press this key to clear the last number, letter or symbol. Press and hold this key to completely clear the input field.



**Asterisk/Shift key:** Press this key before entering text to create upper case characters. You can also use this key to move back one space on the display screen.



**0/Next key:** Press this key to enter 0, or to move to the next word when in T9 predictive word entry mode.



**Pound/Space key:** Press this key to insert a space when entering text.



**Numbers keys 1~9:** If items on a menu are numbered, these keys can be entered to select them.



**END key:** Press this key to exit the Wap Browser and return to Standby Mode.



**Menu Key:** This is the left soft key. This key is also used for accessing the browser menu, secondary options or a menu of secondary options.



**OK/Select Key:** This is the right soft key. This key is also used for selecting the highlighted item.



**SEND key:** Press this key to send a call.

## Using the Web Browser Menus

On the web browser, you can access the following options by pressing the **Option** soft key:

**Reload:** reloads the current web page.

**Home:** takes you back at any time to the homepage of the wireless web service provider.

**Bookmarks:** allows you to directly load a bookmarked web page.

**Mark Site:** allows you to set a bookmark for most pages; they can be accessed directly from any web page. Bookmarks save you time by reducing the number of steps required to access a given page.

**About Openwave:** provides you with information about Openwave and your version of the web browser.

**Advanced:** gives you access the following advanced features:

- Show URL: displays the URL address of the site where you are currently connected. It also enables you to declare the current site as the startup homepage.
- Homepage: allows you to change the startup homepage manually.
- Set WAP Proxy: allows you to configure the proxy settings required for connecting to the wireless web.



- Offline Service: Most applications are stored on a server that cannot be accessed outside your wireless coverage area. However, some applications can be stored in the cache of your phone, enabling you to use them offline. You can remove the associated site from the cache at any time.
- Outbox: stores outgoing requests from the browser so that they can be processed at a later date.
- Restart Browser: restarts the browser without exiting it.
- Encryption: This option is automatically set by the service provider. You do not need to change it.

## Entering Text in the Web Browser

When prompted, you can enter letters, numbers or symbols same way as in the phone mode. See page xx for further details about how to enter characters.

## Prompt

*MENU 4-2*

Your phone can give you a prompt to confirm your browser session. You can set the phone to display the prompt or not to display.

The following options are available:

**None:** You do not receive a prompt.

**To Start:** This is the default setting. You will see the prompt when you enter the browser, but not when you exit it.

**To End:** You will see the prompt only when you exit the browser.

**Both:** You will be prompted when you enter or exit the browser.

## Get it Now

---

When you press the Right key in Standby mode, you can access the **Get it Now** menu which allows you to purchase and download various multimedia files from the wireless web.

To download a multimedia files:

1. In Standby mode, press the Right key.

The menu icons appear on the display.

2. Press the Right key when the **MobileShop** icon is selected.

The following options are available:

- **Catalog**: allows you to browse and purchase applications
- **Search**: allows you to search for an application by entering a keyword.
- **MobileShop Help**: provides you with the help information about using the MobileShop menu.

3. Press the Right key when the **Catalog** option is selected. You are accessed to the associated web site given by your service provider and browse the available applications.
4. Select the application you want to download and follow the instructions on the screen.

To change the browser settings:

1. In Standby mode, press the Right key.
2. Press the Right key to select the **Settings** icon and press the **OK** key.
3. Select an setting option using the Up or Down key and press the **OK** key.

The following options are available:

- **Order Apps**: allows you to change the order of the downloaded applications.
- **Move Apps**: allows you to move an application to the other folder.
- **Manage Apps**: allows you to move an application to the other folder.
- **Main Menu View**: allows you to change the view mode of the main menu screen.
- **Screen Savers**: allows you to activate the Screen Saver application, if downloaded.
- **View Log**: shows the records of your browsing.

4. When you are finished, press the **CLR** or **END** key.

To view help information:

1. In Standby mode, press the Right key.
2. Press the Right key to select the **Help** icon and press the **OK** key.
3. Select a help item using the Up or Down key and press the **OK** key.

4. Press the Up or Down key to scroll through the information.
5. To go back to the main help screen, press the **OK** or **CLR** key.

## Planner

The Planner feature enables you to:

- keep track of important dates and events.
- create a list of things to do and memos.
- set an alarm to ring at a specific time.
- use the phone as a calculator.
- check the time in another part of the world.
- count down to a specific day.
- set the current date and time.

## Today

*MENU 5-1*

You can schedule up to 9 events for the current day, indicating each event's start and end time. You can even have your phone's calendar alert you before an event commences. Events scheduled for future dates automatically appear on your Today events schedule on that day.

## Scheduling a New Event

1. Enter your event contents and press the **OK** key.

For further details about entering characters, see page xx.

2. Enter the start time and date using the numeric keys.

You need to enter the time in 12-hour format. Press the **2** key for **A** (AM) or the **7** key for **P** (PM).

**Note:** You can move through the input fields using the Navigation keys.

3. Enter the end time and date using the number keys.
4. Select when an alarm will inform you of the event, by pressing the Left or Right key. Selecting **No alarm** means that the phone does not ring the alarm.
5. Press the **OK** key to store your event.

## Viewing Your Today's Schedule

The list of the events stored on the current day displays when you select the **Today** menu (**MENU 5-1**).

While viewing the event list, press the Up or Down key to scroll to an event and:

- Press the **OK** key to view the event information. To view the Start time and End time settings, use the Up and Down keys. You can move to the previous or next event by pressing the Left or Right key.
- Press the **Option** soft key to use the following options:
  - Add New:** allows you to add a new event.
  - Edit:** allows you to change the event.
  - Erase:** allows you to erase the selected event.
  - Erase All:** allows you to erase all of the events.

## Scheduler

*MENU 5-2*

This menu allows you to view the current month, as well as a past or future months, in calendar format. On the calendar, the current day is boldfaced and days with scheduled events are indicated by a colored box inside the calendar day.

## Scrolling Through the Calendar

- You can move by one day by pressing the Left or Right key.
- You can move by one week by pressing the Up or Down key.
- To display the next or previous month, press the ▲ or ▴ key.

On the calendar, press the **Option** soft key to use the following options:

- View:** allows you to view the scheduled events of the day.
- Add New:** allows you to add a new event on the day.

## Creating a New Schedule

You can store up to **70** events total in the scheduler, with up to **9** events for one day.

1. Select a day on the calendar, referring to “Scrolling Through the Calendar” on page xx and press the **OK** key.

2. Enter your event contents and press the **OK** key.

For further details about entering letters, see page xx.

3. Enter the start time and date using the numeric keys.

You need to enter the time in 12-hour format. Press the **2** key for **A** (AM) or the **7** key for **P** (PM).

**Note:** You can move through the input fields using the Navigation keys.

4. Enter the end time and date using the number keys.
5. Select when an alarm will inform you of the event, by pressing the Left or Right key.

Selecting **No alarm** means that the phone does not ring the alarm.

6. Press the **OK** key to store your event.

## Viewing Your Schedule

Cannot be checked with the current phone!!!

Select a day with scheduled events on the calendar, referring to “Scrolling Through the Calendar” on page xx and press the **OK** key. The first event stored on the day displays.

Press the Left or Right key to view the previous and next event. To view the start time and end time sets, use the Up and Down keys.

While viewing the event, press the **Option** soft key to use the following options:

**Edit:** allows you to edit the event.

**Erase:** allows you to erase the event.

## Jump To Date

*MENU 5-3*

This feature allows you to specify the calendar date you want to view. You can enter, edit, and /or erase events in your calendar.

To use jump to date, enter the date you want and press the **OK** key.

For further details about creating and viewing your schedule, see page xx.

## To Do List

*MENU 5-4*

This feature allows you to enter up a list of tasks to be done and assign both a priority and a deadline to each task.

### Creating a To Do List

1. Enter the first task and press the **OK** key to confirm.  
For further details about how to enter characters, see page xx.
2. Select the priority either **High** or **Low** using the Left or Right key and then press the Down key to set the time.
3. Enter the time and date by which the task needs to be done, by using the numeric keys, and then press the **OK** key to save the task.

You need to enter the time in 12-hour format. Press the **2** key for **A** (AM) or the **7** key for **P** (PM).

**Note:** You can move through the input fields using the Navigation keys.

## Viewing a To Do List

The list of the tasks displays when you access the **To Do List** menu (**MENU 5-4**). Press the Left or Right key to move to the previous or next to do list.

While viewing the task, press the **Option** soft key to use the following options:

**Add New:** allows you to add a new task.

**Edit:** allows you to edit the task.

**Erase:** allows you to erase the selected task.

**Erase All:** allows you to erase all of the tasks.

## Memo Pad

*MENU 5-5*

This feature allows you to write down memos about anything you need to remember.

### Writing a New Memo

1. Enter the memo contents.  
For further details about how to enter characters, see page xx.
2. Press the **OK** key to save the memo.

## Viewing a Memo

The list of your memos displays when you access the **Memo Pad** menu (**MENU 5-5**).

While viewing the memo list, press the Navigation keys to scroll to a memo and:

- Press the **OK** key to view details. You can move to the previous or next memo by pressing the Navigation keys.
- Press the **Option** soft key to use the following options:
  - Add New:** allows you to add a new memo.
  - Edit:** allows you to edit the selected memo.
  - Erase:** allows you to erase the selected memo.
  - Erase All:** allows you to erase all of the memos.

## Count Down

*MENU 5-6*

This menu helps you know how much time it takes for you to do something, or how many months, days, hours and minutes until a specific day arrives. You can create up to 20 counters using this menu.

## Creating a New Counter

1. Enter the contents for your counter and press the **OK** key.

For further details about entering text, see page xx.

2. Enter the time and date you want to count down from.

You need to enter the time in 12-hour format. Press the **2** key for **A** (AM) or the **7** key for **P** (PM).

### Notes:

- You can move through the input fields using the **Left** or **Right** key.
- You can enter a year between 1981 and 2099.

3. Press the **OK** key to store the counter.

## Viewing a Counter

The list of the counters displays when you access the **Count Down** menu (**MENU 5-6**).

While viewing the counter contents, press the **Left** or **Right** key to move to previous or next counter:

While viewing a counter, press the **Option** soft key to use the following options:

**Add New:** allows you to add a new counter.

**Edit:** allows you to edit the counter.

**Erase:** allows you to erase the selected counter.

**Erase All:** allows you to erase all of the counters.

## Alarm Clock

MENU 5-7

This menu allows you to set an alarm to ring at a specific time.

To set an alarm:

1. Select an alarm type, either **Once**, or **Daily** by pressing the Navigation keys, and then press the **OK** key.
2. Enter the time and date for the alarm to ring.

You need to enter the time in 12-hour format. Press the **2** key for **A** (AM) or the **7** key for **P** (PM).

6. Press the **OK** key to save the alarm setting.

The Alarm icon (  ) appears on the display.

To stop the alarm when it rings, press any key.

To deactivate an alarm setting, access the **Alarm Clock** menu and select **Off**.

Cannot be checked with the current phone!!!

## World Time

MENU 5-8

This menu allows you to check the current time for 12 different time zones around the world.

Select the city corresponding to your time zone by pressing the Navigation keys one or more times. The local date and time display.

To turn the DST (Daylight Saving Time) setting on:

1. After selecting the time zone you want to apply the DST, press the **Option** soft key.
2. When **DST setting** highlights, press the **OK** key.
3. Select **On** and press the **OK** key. The DST icon appears on the left of the time.

**Note: The DST setting is not available for countries other than the USA.**



## Calculator

MENU 5-9

Using this feature, you can use the phone as a calculator. The calculator provides you with the basic arithmetic functions; addition, subtraction, multiplication and division.

1. Enter the first number on the first line using the numeric keys.

### Notes:

- To erase mistakes or clear the display, press the **CLR** key.
  - Use the **✖** key to enter a decimal point and the **#** key to change the sign of a number to a negative (-).
2. Enter the operation for your calculation on the second line by pressing the Navigation keys, according to the graphic on the display.
  3. Enter the second number.
  4. Repeat steps 2 and 3 as many times as required.
  5. To view the result, press the **OK** key.

## Display

The Display feature enables you to:

- change the display style of the menus.
- select an image to be displayed in Standby Mode or create your own greeting.
- set the length of time for the backlight.
- select the time zones for the dual clock.
- turn the service light on or off.

## Animation

MENU 6-1

You can choose one of the animated images already available on your phone. Opening, Closing, and Wallpaper options are available.

## Banner

MENU 6-2

This menu allows you to set a banner message to be displayed at the bottom of the display in Standby Mode.

1. If necessary, press the **CLR** key to delete each letter of the old greeting. Press and hold the **CLR** key to clear the display.
2. Enter your banner message. For further details about how to enter characters, see page xx.
3. When you finish entering the message, press the **OK** key to save the new banner.

## Backlight

MENU 6-3

You have several options for setting how the LCD, keypad backlight operates. Remember that backlight use drains your battery faster.

Select how long the backlight is on after the last key is pressed or the folder is opened.

When you select **Folder open**, the backlight remains on when the folder is open.

When you select **Power Save**, the phone does not use the backlight.

## Contrast

MENU 6-4

The LCD has contrast setting that can help you see the screen better in different lighting conditions.

Scroll between the contrast settings to determine what contrast is most visible to you. When the desired contrast setting displays, press the **OK** key.

## Auto Hyphen

MENU 6-5

When this option is set to **On**, your phone automatically hyphenates numbers when you enter a phone number, for example, 000-0000000. Digits following a pause are not hyphenated.

## Sounds

You can use the **Sounds** menu to customize various sound settings, such as the:

- ringer volume, type, and tone.
- key tone and alert sounds.
- sound which plays when the phone is switched on or off.

## Volume/Vibrate

MENU 7-1

This menu allows you to adjust the ringer volume and alert type.

**Calls:** allows you to adjust the ringer volume for incoming calls.

**Alarm:** allows you to adjust the ringer volume for alarm settings.

Press the Navigation keys to adjust the volume level or select an alert type. The following options are available:

- Vib+Ring: the phone rings in the highest volume level and then vibrates.
- Vibrate: the phone switches to the vibration mode. An incoming call vibrates the phone.
- 1 Beep: the phone sounds a beep.
- Silent: the phone does not sound a ring.
- Level 1 ~ 5: adjust the volume level. The more bars, the louder the volume.

**Notes:**

- The options available may be different depending on the selected ringer item.
- When “Emergency call only” appears after you end an emergency call, the ringer volume for calls and messages is automatically set to **Level 4**.

## Ringer Type

*MENU 7-2*

This menu allows you to set the unique ringer melodies for the following items:

**Calls:** allows you to set a unique ringer for incoming calls.

**Alarm:** allows you to have a distinctive ring for an alarm setting.

**Data/Fax In:** allows you to be alerted with a distinctive ringer when you receive data or fax calls through the phone. This feature may not be available depending on your network.

**Planner:** allows you to set a unique ringer for schedules.

## Key Beep

*MENU 7-3*

Using this menu, you can set up the keypad tone that the phone sounds when you press a key.

The following options are available:

**Volume:** allows you to adjust the volume of the keypad tone using the Navigation keys or the Volume keys on the left side of the phone.

**Tone Length:** allows you to select **Long** or **Normal** DTMF (dual-tone multi-frequency) tones. DTMF tones are sent by your phone to access teleservices, such as a bank account. The system used by the bank or other service determines if you need short or long DTMF tones. If the service is digital, as most are, short DTMF tones will almost always work.

## Alerts

*MENU 7-4*

Your phone gives audible alerts (beeps) at a specified time to inform you that certain things have happened. The alerts only occur in your earpiece so that the other person does not hear them.

The available alerts are:

**Minute Beep:** When this option is set to **On**, the phone sounds an alert 50 seconds before each elapsed minute to remind you of the length of the current call.

**Service:** When this option is set to **On**, the phone sounds an alert when you exit service area or when you return to a service area.

**Connect:** When this option is set to **On**, the phone sounds the connect tone when your call is connected to the system.

**Disconnect:** When this option is set to **On**, the phone sounds the disconnect tone when a call is disconnected.

**Fade:** When this option is set to **On**, the phone sounds an alert when a dropped call occurs during conversation in response to a signal fade.

**Roam:** When this option is set to **On**, the phone sounds an alert when your phone starts roaming.

**Privacy:** When this option is set to **On**, you can set the security level of your phone to avoid eavesdropping.

## Power On/Off

*MENU 7-5*

You can turn on or off the tone that the phone sounds when it is switched on or off.

Select **On** to use the power on/off sound or **Off** not to use it.

## Roam Ringer

*MENU 7-6*

You can set the phone to use a distinctive ring for incoming roaming calls.

Select **On** to use a distinctive ringer or **Off** to use a normal ringer.

## Whisper Mode

*MENU 7-7*

Whisper mode automatically increases the receiving sensitivity of the microphone to obtain the maximum quality of a call even when you speak in a softer voice so that the caller can hear you as if you are speaking normally.

**Note:** It is not recommended that the earpiece be used while using Whisper mode. Audio level may increase without notice depending on the surrounding conditions.

Select **On** to use this mode or **Off** not to use it.

# Voice Kit

Cannot be checked with  
the current phone!!!

In this menu, you can use the phone's voice features, allowing you to:

- dial a number by saying an associated name.
- record a voice memo.
- set the phone to answer a call and record the caller's message.

## Voice Dial

*MENU 8-1*

When your phone is in the digital mode, you can call up to 20 stored entries by speaking the name into the microphone. Using the voice dialing option requires that you first program the phone to recognize the name of the person you are calling.

### Record *(MENU 8-1-1)*

This menu allows you to record names and register numbers for subsequent voice dialing. The phone provides voice prompts and screen displays to guide you through the recording process.

1. Say the name you want to program at the prompt. The phone stores the name as a first sample.
2. Respond to the prompt by repeating the name after the beep. The phone stores the name as a second sample, and then prompts you to enter the phone number.
3. Enter the phone number by pressing the number keys and press the **OK** key.

### Tips for Recording a Name

- Avoid recording similar names phonetically. If you record a similar name to one already in the memory, the phone requests another name.
- Speak clearly and naturally.
- The person who will use the phone should record the name. The phone does not recognize the name if the voice is different.
- Avoid too long or too short a name. Names with two to five syllables are recommended.
- If this feature does not work properly, erase the name and try again with another name.
- Practice several times to obtain the best result.
- You can record up to 20 names. If you try to record more than that, the phone announces "Out of space to store voice dial!"

### Review *(MENU 8-1-2)*

When a list of your stored voice dial numbers displays, scroll to a entry and press the **OK** key. The recorded name plays audibly.

On the number list, press the **Option** soft key to use the following options:

**Talk:** places a call to the number.

**Erase:** erases the number.

**Play All:** plays back all of the recorded names.

## Erase All (MENU 8-1-3)

This menu erases all of the entries on the Voice Dial list. When a confirming message displays, select **Yes** and press the **OK** key.

## Set Active (MENU 8-1-4)

Voice Dialing is always active once you have programmed the phone to accept voice dialing entries and the associated phone numbers.

To place a call using voice dialing, simply press and hold the **\* key** in Standby Mode and then say the name into the phone after you hear a prompt.

Using the **Set Active** menu, you can set how to initiate a voice dialing call. The following options are available:

**[\*] Only:** enables voice dialing only by pressing and holding the **\* key**.

**[\*] / Folder:** enables voice dialing by pressing and holding the **\* key** or by opening the folder.

**[\*] / EarMic:** enables voice dialing by pressing and holding the **\* key** or the button on your ear-microphone.

## Voice Memo

*MENU 8-2*

**Note:** You can quickly enter this menu by pressing the **Up key** in Standby Mode.

### Record (MENU 8-2-1)

You can record up to voice memos of 4 minutes total. This feature shares the memory with the Voice Answer feature and the amount of time for memos are dependent on the available memory less any callers' messages; for example, if your phone has the callers' messages of 4 minutes total, you cannot record any voice memo.

1. Record a memo by speaking to the microphone.

When you are recording, a timer displays to show you the elapsed time.

You can pause recording by pressing the **Pause key** and then resume by pressing the **Resume key**.

2. Press the **Stop** soft key to end recording. The screen provides you with the following choices. Scroll to an option and press the **OK key**.

- **Review:** allows you to review the voice memo. The screen displays the length of the memo along with the date and time.
- **Rerecord:** allows you to discard the current memo and record another one.
- **Save:** allows you to save the voice memo.
- **Quit:** allows you to quit recording the memo and exit the **Record** menu.

- When you are satisfied, select **Save**.
- Enter a title for the memo and press the **OK** key.

### Review (MENU 8-2-2)

When a list of your voice memos displays, scroll to the memo you want to review and press the **OK** key. The phone plays back the memo.

On the memo list, press the **Option** soft key to use the following options:

**Play:** plays back the memo.

**Erase:** erases the selected memo.

### Erase All (MENU 8-2-3)

This menu allows you to erase all of the voice memos.

When a confirming message displays, select **Yes** by using the Navigation keys, and then press the **OK** key.

## Call Screen

*MENU 8-3*

If you are not able to answer an incoming call, you can set your phone to answer a call with the preset greeting message and record the caller's message. As this feature shares the memory with voice memos, the total length of messages is dependent on the available memory less any voice memos.

**Note:** The Call Screen feature does not work when your phone is in the analog mode.

### On/Off (MENU 8-3-1)

This menu allows you to enable or disable the Call Screen mode.

### Inbox (MENU 8-3-2)

You can listen to the callers' messages recorded in your phone. When you access this menu, a list of the recorded messages appears.

**Note:** If the phone has the callers' messages waiting to be checked, it displays the total number of the messages and the date and time when the last message was recorded. Pressing the **OK** key takes you to the Inbox.

Press the Up or Down key to scroll to a message and press the **OK** key to play it back.

You can pause the playback by pressing the **Pause** soft key and then resume by pressing the **Resume** soft key.

In the message list, press the **Option** soft key to the following options:

**Play:** plays the selected message.

**Erase:** erases the selected message.

**Info:** shows detailed information about the message, such as caller's number if identified, length, memory size and date and time when the message was recorded.

**Talk:** places a call to the caller's number, if identified.

## Greeting (MENU 8-3-3)

Your phone provides you with the default greeting message to be played when a call comes in. You can also record your own greeting message.

To record a greeting message:

1. Select **Record** and press the **OK** key.
2. Wait until a beeping prompt sounds and record a greeting message by speaking into the microphone.

You can pause recording by pressing the **Pause** soft key and then resume by pressing the **Resume** soft key.

3. When recording is complete, press the **Stop** soft key. The phone automatically saves and activates the message.

If you want to play back the currently selected message, highlight **Play** by using the Navigation keys, and then press the **OK** key.

To enable or disable your own greeting message:

1. Highlight **Select** by using the Navigation keys, and then press the **OK** key.
2. Select **Recorded** to use your message or **Default** to use the default message.
3. Press the **OK** key to save your selection.

**Note:** Once you have recorded your own message and then have changed the greeting to the default message, your message is deleted.

## Call Sound (MENU 8-3-4)

This menu allows you to enable or disable the screening speaker which allows you to listen to the caller's message while the caller is leaving it.

You can answer the call by pressing the **SEND** key.

## Wait Time (MENU 8-3-5)

This menu allows you to set how long the phone waits before answering a call with the greeting message. Selecting **Off** means that the phone plays back the message as soon as a call comes in.



# Setup

Many different features of your phone can be customized to suit your preferences.

## Location

*MENU 9-1*

This menu allows you to turn the **Location On** or **911 Only**. It is set to **911 Only**, when you first use your phone.

This option is automatically turned on when you place a call to 911. However, this option is turned back off when your 911 calls is completed.

**Note:** Contact your service provider to check if/when/where location based services are available.

## Network

*MENU 9-2*

Your phone allows you to set the preferred system. Contact your service provider to determine the best networking methods for you.

### Set NAM *(MENU 9-2-1)*

NAM stands for numerical assignment module, essentially your phone number. Your phone can have two NAMs. This means that you can have two phone numbers for using your phone and can quickly and easily switch your service back and forth between the two numbers.

If you change the NAM, the phone turns off by itself and back on and acquires service using the new NAM setting.

### Roam Option *(MENU 9-2-2)*

Roaming is a feature which is only relevant in areas where there are at least two cellular service providers having valid roaming agreements. Roaming allows you to register your phone on one of the networks, but use the facilities of the other if your own network is not available. This system priority feature allows you to program your phone for optimum operation within or outside your home service area.

You should always check your phone's display because it will let you know when you're outside the service provider network and whether your phone is operating in another network; the Roaming icon (📶) appears.

You have the following options which allows you to control the phone's roaming ability:

**Home only:** With this setting, you cannot roam. If your home system is not available, your call will not be connected and the No Service indicator (📵) is displayed.

**Automatic:** Your phone automatically search for a first available one of all types of service according to the Preferred Roaming List supplied by the service provider.

## Data/Fax

MENU 9-3

Your phone is capable of sending and receiving digital data and fax call when connected to a computing device (laptop, desktop, handheld, palmtop, etc.) running Windows 95, Windows 98, Windows NT or later versions. The phone functions just like a typical modem on your PC, enabling you to use wireless data involving a wide variety of Windows software applications.

To use digital data or fax services with your phone, you will need to obtain a digital data/fax kit from your service provider. This kit contains the necessary cables, software, and user's guide required for you to connect and use your phone with your computing device.

**Note:** The phone must be on a digital network to receive or send faxes and data.

The following options are available:

**Auto Detect:** allows you to set the phone to automatically receive data or faxes. The following options are available:

**Data/Fax off:** your phone receives voice calls only.

**Fax for next call:** your phone receives fax calls for the next 10 minutes.

**Fax until powered off:** your phone receives fax calls until you power the phone off and back on .

**Data for next call:** your phone receives data calls for the next 10 minutes.

**Data until powered off:** your phone receives data calls until you power the phone off and back on.

**Baud Rate:** allows you to select the speed for the communication between the phone and the computing device.

## Receiving a Fax or Data File

To receive a fax or data, ensure that your phone is connected to your PC and is powered on. Select one of the Data/Fax options.

When you receive a fax call, set up the **Answer** mode in the fax program on your PC and click on **Receive** and select one of the following:

- Automatic Receive (recommended)
- Manual Receive

## Sending a Fax or Data File

When connected to a computing device, your phone allows wireless fax and data transmissions. Your computing device software initiates the call to the destination phone number. The phone functions as a wireless modem to send the fax or data file to the number designated by your PC software.

## Security

MENU 9-4

Your phone provides you with many security options, including a user-programmable lock code and call restriction features.

To access the **Security** menu, you need to enter a lock code. The lock code is preset to "0000" at the factory.

## Lock Phone *(MENU 9-4-1)*

When the phone is locked, you cannot operate the phone until you enter the lock code.

The following options are available:

**Never:** The phone remains unlocked.

**Now:** The phone locks immediately.

**On Power-Up:** The phone locks automatically the next time you turn it on.

To place an emergency call, enter the number and then press the **SEND** key. The phone recognizes three emergency numbers stored in the **Emergency #** menu (**MENU 9-4-3**).

To unlock the phone, enter the lock code. The phone is immediately unlocked and returns to Standby Mode.

## Change Lock *(MENU 9-4-2)*

This feature allows you to change your current lock code to a new one. The lock code is preset to "0000" at the factory.

Enter a new, four-digit lock code and then press the **OK** key.

## Emergency Number *(MENU 9-4-3)*

Your phone provides you with the option for storing three emergency numbers. All of these numbers can be manually dialed at any time even when your phone is locked or all of the outgoing calls are restricted.

### IMPORTANT NOTICE!

Emergency calling may not be available on all wireless networks at all times. A connection cannot always be guaranteed, due to various transmission methods, network parameters and user settings used to complete a call from your wireless phone.

DO NOT depend on this phone as a primary method of dialing 100 or for any other essential or emergency communications.

Remember to always turn your phone on and check for the adequate signal strength before placing a call.

To store an emergency number:

1. Press the Up or Down key to select a location and press the **OK** key.
2. If necessary, press and hold the **CLR** key to clear the old number.
3. Enter the number you want.

Each emergency number can be up to 24 digits long.

4. Press the **OK** key to store the number.

To make an emergency call in the lock mode, simply enter a programmed number, and then press the **SEND** key.

## Voice Privacy (MENU 9-4-4)

Used only in digital networks, Voice Privacy encrypts the voice channel so that people cannot eavesdrop on your conversation.

The following options are available:

**Standard:** turns this feature off. The phone will use a standard line for calls.

**Enhanced:** turns this feature on. The phone will make and receive calls on an encrypted high security line.

**Note:** This feature may not be available in all areas. Contact Reliance for details and its availability.

## Restriction (MENU 9-4-5)

This feature allows you to restrict all of the outgoing calls.

Select **On** to restrict the calls, or **Off** to deactivate the restriction.

## Erase Memory (MENU 9-4-6)

This feature allows you to clear all of the numbers in your Phonebook.

When a confirming message displays, select **Yes** and press the **OK** key.

## Reset Phone (MENU 9-4-7)

Resetting the phone cancels all of your selection in the user-selectable setting options and returns them to the factory default settings.

When a confirming message displays, select **Yes** and press the **OK** key. The phone turns itself off and back on, then returns to Standby Mode.

## Call Answer

MENU 9-5

This menu allows you to select how to answer an incoming call.

The following options are available:

**SEND Key:** The phone answers only when you press the **SEND** key.

**Any Key:** The phone answers when you press any key except for the **END** key.

**Folder Open:** The phone answers when you open the folder.

## Auto Answer

MENU 9-6

With this menu activated, the phone automatically answers calls after a specified time. This feature works only when the phone is connected to an optional hand-free car kit and is useful while driving, for instance.

To activate this feature, set how long the phone waits before answering. Select one from **after 1 sec**, **after 3 sec** or **after 5 sec**.

To deactivate the feature, select **Off**.

## Auto Retry

MENU 9-7

When this menu is activated, your phone automatically redials the call up to 10 times when a connection fails.

To activate this feature, select how often the phone will automatically retry the call; **10 Seconds**, **30 Seconds** and **60 Seconds** options are available.

To deactivate the feature, select **Off**.

## Language

MENU 9-8

This menu allows you to change the language of voice prompts, menus and key input.

You can choose either **English** or **Spanish**.

## Clock Set

MENU 9-9

Your phone is equipped with a standard clock and a dual clock for setting time in multiple cities or countries.

Your phone automatically displays the time and date when in digital mode. This information is unavailable on the screen when your phone is out of service or when powered up. You can select Main Clock or Dual Clock for the Wallpaper image; for details, see page xx.

### Main Clock (MENU 9-9-1)

1. Enter the time and date.

You need to enter the time in 12-hour format. Press the **2** key for **A** (AM) or the **7** key for **P** (PM).

2. Press the **OK** key to save the setting.

### Dual Clock (MENU 9-9-2)

To select time zones for the dual clock:

1. When **Location** highlights, press the Down key.

2. Select the time zone for the first clock by pressing the Left or Right key and press the Down key.

3. Select the time zone for the second clock by pressing the Left or Right key.

4. Press the **OK** key to confirm the selection.

To apply the daylight saving time:

1. When **Location** highlights, press the Left or Right key to display **Summer Time**. Press the Down key.
2. Select **On** to use the daylight saving time for the first clock. Otherwise, select **Off**.
3. Press the Down key and repeat step 2 for the second clock.
4. Press the **OK** key to confirm the selection.

## Version

*MENU 9-0*

This menu allows you to view the software and hardware versions of your phone. This feature is helpful if you need to the call customer care.

# Health and Safety Information

## Exposure to Radio Frequency (RF) Signals

Your wireless phone is a radio transmitter and receiver. It is designed and manufactured not to exceed the emission limits for exposure to radio frequency (RF) energy set by the Federal Communications Commission (FCC) of the U.S. Government. These limits are part of comprehensive guidelines and establish permitted levels of RF energy for the general population. The guidelines are based on the safety standards that were developed by independent scientific organizations through periodic and through evaluation of scientific studies.

The standards include a substantial safety margin designed to assure the safety of all persons, regardless of age and health.

The exposure standard for wireless phones employs a unit of measurement known as Specific Absorption Rate (SAR). The SAR limit set by the FCC is 1.6W/kg\*.

\* In the U.S. and Canada, the SAR limit for mobile phones used by the public is 1.6 watts/kg (W/kg) averaged over one gram of tissue. The standard incorporates a substantial margin of safety to give additional protection for the public and to account for any variations in measurements.

SAR tests are conducted using standard operating positions specified by the FCC with the phone transmitting at its highest certified power level in all tested frequency bands. Although the SAR is determined at the highest certified power level, the actual SAR level of the phone while operating can be well below the maximum value. This is because the phone is designed to operate at multiple power levels so as to use only the power required to reach the network. In general, the closer you are to a wireless base station antenna, the lower the power output of the phone.

Before a new model phone is available for sale to the public, it must be tested and certified to the FCC that it does not exceed the limit established by the government-adopted requirement for safe exposure. The tests are performed in positions and locations (e.g., at the ear and worn on the body) as required by the FCC for each model. While there may be differences between the SAR levels of various phones and at various positions, they all meet the government requirement.

The FCC has granted an Equipment Authorization for this model phone with all reported SAR levels evaluated as in compliance with the FCC RF exposure guidelines. SAR information on this model phone is on file with the FCC and can be found under the Display Grant section of <http://www.fcc.gov/oet/fccid> after searching on FCC ID printed in the label on the phone. FCC certification information for this model phone is attached separation paper.

## For Body Operation

For body worn operation, this model phone has been tested and meets the FCC RF exposure guidelines when used with a Samsung-supplied or approved accessory designated for this product or when used with an accessory that contains no metal and that positions the handset a minimum from the body. The minimum distance for this model phone is written in the FCC certification information from the body. None compliance with the above conditions may violate FCC RF exposure guidelines.

For more information concerning exposure to radio frequency signals, see the following websites:

Federal Communications Commission (FCC)  
<http://www.fcc.gov/rfsafety>

Cellular Telecommunications Industry Association (CTIA): <http://www.wow-com.com>

U.S. Food and Drug Administration (FDA)  
<http://www.fda.gov/cdrh/consumer>

World Health Organization (WHO)  
<http://www.who.int/peh-emf/en>

## Precautions When Using Batteries

- Never use any charger or battery that is damaged in any way.
- Use the battery only for its intended purpose.
- If you use the phone near the network's base station, it uses less power; talk and standby time are greatly affected by the signal strength on the cellular network and the parameters set by the network operator.
- Battery charging time depends on the remaining battery charge and the type of battery and charger used. The battery can be charged and discharged hundreds of times, but it will gradually wear out. When the operation time (talk time and standby time) is noticeably shorter than normal, it is time to buy a new battery.
- If left unused, a fully charged battery will discharge itself over time.
- Use only Samsung-approved batteries and recharge your battery only with Samsung-approved chargers. When a charger is not in use, disconnect it from the power source. Do not leave the battery connected to a charger for more than a week, since overcharging may shorten its life.
- Extreme temperatures will affect the charging capacity of your battery: it may require cooling or warming first.

- Do not leave the battery in hot or cold places, such as in a car in summer or winter conditions, as you will reduce the capacity and lifetime of the battery. Always try to keep the battery at room temperature. A phone with a hot or cold battery may temporarily not work, even when the battery is fully charged. Li-ion batteries are particularly affected by temperatures below 0 °C (32 °F).
- Do not short-circuit the battery. Accidental short-circuiting can occur when a metallic object (coin, clip or pen) causes a direct connection between the + and – terminals of the battery (metal strips on the battery), for example when you carry a spare battery in a pocket or bag. Short-circuiting the terminals may damage the battery or the object causing the short-circuiting.
- Dispose of used batteries in accordance with local regulations. Always recycle. Do not dispose of batteries in a fire.



## Road Safety

Your wireless phone gives you the powerful ability to communicate by voice, almost anywhere, anytime. But an important responsibility accompanies the benefits of wireless phones, one that every user must uphold.

When driving a car, driving is your first responsibility. When using your wireless phone behind the wheel of a car, practice good common sense and remember the following tips.

1. Get to know your wireless phone and its features, such as speed dial and redial. If available, these features help you to place your call without taking your attention off the road.
2. When available, use a hands-free device. If possible, add an extra layer of convenience and safety to your wireless phone with one of the many hands-free accessories available today.
3. Position your wireless phone within easy reach. Be able to access your wireless phone without removing your eyes from the road. If you get an incoming call at an inconvenient time, let your voice mail answer it for you.
4. Let the person you are speaking with know you are driving; if necessary, suspend the call in heavy traffic or hazardous weather conditions. Rain, sleet, snow, ice and even heavy traffic can be hazardous.

5. Do not take notes or look up phone numbers while driving. Jotting down a To Do list or flipping through your Phonebook takes your attention away from your primary responsibility-driving safely.
6. Dial sensibly and assess the traffic; if possible, place calls when you are not moving or before pulling into traffic. Try to plan calls when your car will be stationary. If you need to make a call while moving, dial only a few numbers, check the road and your mirrors, then continue.
7. Do not engage in stressful or emotional conversations that may be distracting. Make the people with whom you are talking aware that you are driving and suspend conversations that have the potential to divert your attention from the road.
8. Use your wireless phone to call for help. Dial the emergency number in the case of fire, traffic accident or medical emergencies. Remember, it is a free call on your wireless phone!
9. Use your wireless phone to help others in emergencies. If you see a car accident, crime in progress or other serious emergency where lives are in danger, call the emergency number, as you would want others to do for you.

10. Call roadside assistance or a special non-emergency wireless assistance number when necessary. If you see a broken-down vehicle posing no serious hazard, a broken traffic signal, a minor traffic accident where no one appears injured, or a vehicle you know to be stolen, call roadside assistance or any other special non-emergency wireless number.

## Operating Environment

Remember to follow any special regulations in force in any area and always switch your phone off whenever it is forbidden to use it, or when it may cause interference or danger.

When connecting the phone or any accessory to another device, read its user's guide for detailed safety instructions. Do not connect incompatible products.

As with other mobile radio transmitting equipment, users are advised that for the satisfactory operation of the equipment and for the safety of personnel, it is recommended that the equipment should only be used in the normal operating position (held to your ear with the antenna pointing over your shoulder).

## Electronic Devices

Most modern electronic equipment is shielded from radio frequency (RF) signals. However, certain electronic equipment may not be shielded against the RF signals from your wireless phone. Consult the manufacturer to discuss alternatives.

## Pacemakers

Pacemaker manufacturers recommend that a minimum distance of 15 cm (6 inches) be maintained between a wireless phone and a pacemaker to avoid potential interference with the pacemaker. These recommendations are consistent with the independent research and recommendations of Wireless Technology Research.

Persons with pacemakers:

- Should always keep the phone more than 15 cm (6 inches) from their pacemaker when the phone is switched on
- Should not carry the phone in a breast pocket
- Should use the ear opposite the pacemaker to minimize potential interference

If you have any reason to suspect that interference is taking place, switch your phone off immediately.

## Hearing Aids

Some digital wireless phones may interfere with some hearing aids. In the event of such interference, you may wish to consult your hearing aid manufacturer to discuss alternatives.

### **Other Medical Devices**

If you use any other personal medical devices, consult the manufacturer of your device to determine if it is adequately shielded from external RF energy. Your physician may be able to assist you in obtaining this information. Switch your phone off in health care facilities when any regulations posted in these areas instruct you to do so. Hospitals or health care facilities may be using equipment that could be sensitive to external RF energy.

### **Vehicles**

RF signals may affect improperly installed or inadequately shielded electronic systems in motor vehicles. Check with the manufacturer or its representative regarding your vehicle. You should also consult the manufacturer of any equipment that has been added to your vehicle.

### **Posted Facilities**

Switch your phone off in any facility where posted notices require you to do so.

### **Potentially Explosive Environment**

Switch your phone off when in any area with a potentially explosive atmosphere and obey all signs and instructions. Sparks in such areas could cause an explosion or fire resulting in bodily injury or even death.

Users are advised to switch the phone off while at a refueling point (service station). Users are reminded of the need to observe restrictions on the use of radio equipment in fuel depots (fuel storage and distribution areas), chemical plants or where blasting operations are in progress.

Areas with a potentially explosive atmosphere are often but not always clearly marked. They include below deck on boats, chemical transfer or storage facilities, vehicles using liquefied petroleum gas (such as propane or butane), areas where the air contains chemicals or particles, such as grain, dust or metal powders, and any other area where you would normally be advised to turn off your vehicle engine.

## Emergency Calls

This phone, like any wireless phone, operates using radio signals, wireless and landline networks as well as user-programmed functions, which cannot guarantee connection in all conditions. Therefore, you should never rely solely on any wireless phone for essential communications (medical emergencies, for example).

Remember, to make or receive any calls the phone must be switched on and in a service area with adequate signal strength. Emergency calls may not be possible on all wireless phone networks or when certain network services and/or phone features are in use. Check with local service providers.

To make an emergency call:

1. If the phone is not on, switch it on.
2. Key in the emergency number for your present location. Emergency numbers vary by location.
3. Press the **SEND** key.

If certain features are in use (call barring, for example), you may first need to deactivate those features before you can make an emergency call. Consult this document and your local cellular service provider.

When making an emergency call, remember to give all the necessary information as accurately as possible. Remember that your phone may be the only means of communication at the scene of an accident; do not cut off the call until given permission to do so.

## Other Important Safety Information

- Only qualified personnel should service the phone or install the phone in a vehicle. Faulty installation or service may be dangerous and may invalidate any warranty applicable to the device.
- Check regularly that all wireless phone equipment in your vehicle is mounted and operating properly.
- Do not store or carry flammable liquids, gases or explosive materials in the same compartment as the phone, its parts or accessories.
- For vehicles equipped with an air bag, remember that an air bag inflates with great force. Do not place objects, including both installed or portable wireless equipment in the area over the air bag or in the air bag deployment area. If wireless equipment is improperly installed and the air bag inflates, serious injury could result.
- Switch your phone off before boarding an aircraft. The use of wireless phones in aircraft may be dangerous to the operation of the aircraft, and is illegal.
- Failure to observe these instructions may lead to the suspension or denial of telephone services to the offender, or legal action, or both.

## Care and Maintenance

Your phone is a product of superior design and craftsmanship and should be treated with care. The suggestions below will help you fulfill any warranty obligations and allow you to enjoy this product for many years.

- Keep the phone and all its parts and accessories out of the reach of small children's.
- Keep the phone dry. Precipitation, humidity and liquids contain minerals that will corrode electronic circuits.
- Do not use the phone with a wet hand. Doing so may cause an electric shock to you or damage to the phone.
- Do not use or store the phone in dusty, dirty areas, as its moving parts may be damaged.
- Do not store the phone in hot areas. High temperatures can shorten the life of electronic devices, damage batteries, and warp or melt certain plastics.
- Do not store the phone in cold areas. When the phone warms up to its normal operating temperature, moisture can form inside the phone, which may damage the phone's electronic circuit boards.
- Do not drop, knock or shake the phone. Rough handling can break internal circuit boards.

- Do not use harsh chemicals, cleaning solvents or strong detergents to clean the phone. Wipe it with a soft cloth slightly dampened in a mild soap-and-water solution.
- Do not paint the phone. Paint can clog the device's moving parts and prevent proper operation.
- Do not put the phone in or on heating devices, such as a microwave oven, a stove or a radiator. The phone may explode when overheated.
- Use only the supplied or an approved replacement antenna. Unauthorized antennas or modified accessories may damage the phone and violate regulations governing radio devices.
- If the phone, battery, charger or any accessory is not working properly, take it to your nearest qualified service facility. The personnel there will assist you, and if necessary, arrange for service.

## Acknowledging Special Precautions and the FCC and Industry Canada Notice

### Cautions

Modifications not expressly approved by the party responsible for compliance could void the user's authority to operate the equipment.

### FCC Compliance Information

This device complies with Part 15 of FCC Rules.

Operation is subject to the following two conditions:

- (1) This device may not cause harmful interference, and
- (2) This device must accept any interference received. Including interference that may cause undesired operation.

### Information to User

This equipment has been tested and found to comply with the limits for a Class B digital device, pursuant to part 15 of the FCC Rules. These limits are designed to provide reasonable protection against harmful interference in a residential installation.

This equipment generates, uses and can radiate radio frequency energy and, if not installed and used in accordance with the instructions, may cause harmful interference to radio communications. However, there is no guarantee that interference will not occur in a particular installation. If this equipment does cause harmful interference to radio or television reception, which can be determined by turning the equipment off and on, the user is encouraged to try to correct the interference by one or more of the following measures:

- Reorient or relocate the receiving antenna.
- Increase the separation between the equipment and receiver.
- Connect the equipment into an outlet on a circuit different from that to which the receiver is connected.
- Consult the dealer or an experienced radio/ TV technician for help.

## Glossary

**Airtime** - Actual time spent talking on the wireless phone. Most carriers bill customers based on how many minutes of airtime they use each month.

**Antenna** - A device for transmitting or receiving signals. The size and shape of antennas is determined, in part, by the frequency of the signal they receive. Wireless phones and the base station must have antennas.

**Base Station** - The fixed radio transmitter/receiver that maintains communications with mobile radio telephones within a given area. (Typically called a cell or cell site)

**CDMA** (Code Division Multiple Access) A spread-spectrum approach to digital transmission. With CDMA, each conversation is digitized and then tagged with a code. The mobile phone deciphers only a particular code to pick the right conversation off the air. The transmitted signal is just above noise level across the available bandwidth.

**Channel** - Communications signals transmit along paths called channels.

**Codec** - Compression & Decompression.

**Deactivation** - The process of rendering a wireless phone inactive.

**DTMF** - (Dual-tone Multi-Frequency ) You send DTMF signals when you enter numbers by pressing the digit keys.

**EVRC** - (Enhanced Variable Rate Codec) EVRC is a new global standard for compressing and decompressing voice signals. EVRC uses a lower bit rate (the number of bits sent per second) than existing CDMA vocoders, while providing significant improvements in voice quality. This technology enables your phone to provide superb voice quality while benefiting from the ability to process more cellular voice calls using less bandwidth than the voice codecs in CDMA networks today.

**Frequency** - A measure based on time, as one or more waves per second, in an electrical or light wave information signal. A signal's frequency is stated in cycles-per-second or Hertz (Hz).

**Hands-Free** - A feature that permits a driver to use a wireless phone without lifting or holding the handset - an important safety feature for automobiles, tractors and most other motorized vehicles.

**LCD** - (Liquid Crystal Display) Commonly used to refer to the screen display on the wireless phone.

**LED** - (Light Emitting Diode) Commonly used to refer to a small light on the wireless phone or on the Desktop Charger. The LED lights on the phone to indicate an incoming call. The lights on the charger indicate that battery charging is taking place.

**Prepend** - The addition of a prefix, such as an area code, to a phone number.

**RF** - Radio Frequency

**Roaming** - The ability to use a wireless phone to make and receive calls in places outside of the home service area.

**Service Charge** - The amount paid each month to receive wireless service.

**Standby Time** - The amount of time a fully charged wireless portable or transportable phone can be on and idle without being in use. (See Talk Time)

**Talk Time** - The length of time a person can talk on a portable or transportable wireless phone without recharging the battery.

**Vocoder** - Voice Coder. A device used to convert speech into digital signals.

**Wireless** - Radio-based Systems that allow transmission of telephone or data signals through the air without a physical connection, such as a metal wire (copper) or fiber optic cable.

# Index

The index will be updated in  
a later version

## A

Accessories • 9  
Air time **(1-5)** • 55  
Alarm **(5-5)** • 84  
Alerts **(7-3)** • 98  
Animation • 101  
Auto answer **(0-1)** • 105  
Auto retry **(0-3)** • 106

## B

Backlight **(8-4)** • 102  
Banner **(8-3)** • 102  
Battery  
  charging • 18  
  installing • 17  
  low battery indicator • 20  
  removing • 18  
  precautions • 116

## C

Calculator **(5-6)** • 85  
Call  
  answer **(0-2)** • 105  
  answering • 34  
  emergency • 25  
  ending • 25  
  forwarding • 37  
  from Phone Book • 26  
  incoming **(1-2)** • 53  
  making • 24  
  missed • 36  
  outgoing **(1-1)** • 52  
  redialing last • 25  
  restriction • 111  
  three way • 39  
  waiting • 38  
Caller ID • 36  
Camera **(#)** • 114  
Care • 126  
Characters, entering • 40  
Charging batteries • 18  
Clock • 103

Connect tone • 98  
Contrast **(8-6)** • 103  
Correcting number • 25

## D

Data/fax  
  receiving/sending • 109  
  Data/fax **(0-7)** • 108  
Dialing  
  pause • 29  
  prepend • 26  
  speed • 27  
  voice • 32, 88  
Disconnect tone • 98  
Display  
  LCD • 10  
  external • 15  
DTMF tone  
  length **(7-6)** • 99  
Dual clock **(8-5)** • 103

## E

Erasing History **(1-4)** • 54  
Erase Msg **(3-7)** • 69  
External Display • 15

## F

Finding  
  phonebook • 56

## G

Games **(9)** • 104  
Greeting • 94

## I

Icon description • 13  
Inbox **(3-3)** • 66  
In-call options • 35  
Incoming calls **(1-2)** • 53  
Installing battery • 17

## K

Key Beep **(7-5)** • 99  
Keys  
  description • 11  
  location • 10

## L

Language **(0-4)** • 106  
Last number redialing • 25  
Letters, entering • 40  
Listening  
  voicemail • 65  
Lock code • 111  
Low battery indicator • 20

## M

Maintenance • 126  
Memo pad **(5-4)** • 83  
Memory **(2-5)** • 61  
Memory, clearing • 113  
Menus  
  list • 49  
  scrolling • 47  
  shortcuts • 48  
Messages  
  erasing • 69  
  filed • 68  
  greeting • 94  
  setup **(3-8)** • 70  
  voice • 65  
Minute beep • 98  
Missed calls • 36  
Modes  
  phone • 22  
  text input • 40  
Mute  
  microphone • 35

## N

Names  
  entering • 40  
  find **(2-1)** • 56  
NAM setting **(0-5)** • 107  
Number  
  adding in an entry • 60  
  correcting • 25  
  my phone # **(2-4)** • 61  
  searching • 56

## O

Outbox **(3-4)** • 67  
Outgoing calls **(1-1)** • 52

## P

Phone  
  layout • 10  
  lock • 110  
  my number **(2-4)** • 61  
Phonebook **(2)** • 56  
PIN  
  code • 112  
Planner **(5)** • 79  
Power save mode • 23  
Prepend dialing • 26

## R

Redialing  
  auto • 106  
  last call • 25  
  Removing battery • 18  
Reset phone • 113  
Restrict • 111  
Ring  
  type **(7-2)** • 97  
  volume **(7-1)** • 96  
Roam ringer **(7-4)** • 99



## S

- Safety
  - batteries • 116
  - information • 116
  - precautions • 7
- Scheduler **(5-2)** • 81
- Searching
  - phonebook • 56
- Security **(0-9)** • 110
- Service alert • 98
- Service light • 16
- Setting NAM **(0-5)** • 107
- Setting system **(0-6)** • 107
- Setting time **(5-9)** • 87
- Setup **(0)** • 105
- Sounds **(7)** • 96
- Speed dialing • 27
- Standby mode • 122
- Switching on/off
  - phone • 21

## T

- Task List **(5-3)** • 82
- Text, entering • 40
- Today **(5-1)** • 79
- Tone length **(7-6)** • 99
- T9 text mode • 42

## U

- Unpacking • 9

## V

- Version **(0-8)** • 110
- Voice answer **(6-3)** • 92
- Voice dial **(6-1)** • 88
- Voice memo **(6-2)** • 91
- Voice message **(3-2)** • 65
- Volume, adjusting
  - ring **(7-1)** • 96
  - key **(7-5)** • 99

## W

- Web Browser
  - get in web **(4-1)** • 73
  - prompt **(4-2)** • 78
- World time **(5-7)** • 86
- Writing new message • 62

## BASIC OPERATIONS

Make a call	Phone number + <b>SEND</b>	Save a Number	Enter Number + <b>OK</b> + <b>OK</b> + Left/Right to select Home / Office / Pager / Fax + <b>OK</b> + Enter Name + <b>OK</b> + <b>Option</b> soft key to enter information + <b>OK</b>
End a call	<b>END</b>	Speed dialing	Enter Memory Location of the number you want; holding the last digit to automatically dial.
Receive a call	<b>SEND</b> or open the phone	Phonebook Search	Enter <b>Phone Book</b> → <b>Find</b> menu + Up/Down + <b>OK</b>
Adjust the key beep volume	<i>(in Standby Mode)</i> ▲ / ▼ on the left side	Launch the web browser	Press <b>Z</b>
Adjust the speaker volume	<i>(during a conversation)</i> ▲ / ▼ on the left side		
Redial the last call	<b>SEND</b> twice		
Switch to the silent mode	Hold <b>#</b>		
Voice dialing	Hold <b>* or open the folder</b> + Say a name		



Main Menu *(To access, press the Menu soft key)*

- |               |  |              |   |
|---------------|--|--------------|---|
| 1: Calls      | <ul style="list-style-type: none"> <li>1: Outgoing</li> <li>2: Incoming</li> <li>3: Missed</li> <li>4: Erase Logs</li> <li>5: Call Timer</li> </ul>  | 6: Display   | <ul style="list-style-type: none"> <li>1: Animation</li> <li>2: Banner</li> <li>3: Backlight</li> <li>4: Contrast</li> <li>5: Auto Hyphen</li> </ul>  |
| 2: Phone Book | <ul style="list-style-type: none"> <li>1: Find</li> <li>2: Add</li> <li>3: Rename Group</li> <li>4: My Phone#</li> <li>5: Memory</li> </ul>  | 7: Sounds    | <ul style="list-style-type: none"> <li>1: Volume/Vibrate</li> <li>2: Ringer Type</li> <li>3: Key Beep</li> <li>4: Alerts</li> <li>5: Power On/Off</li> <li>6: Roam Ring</li> <li>7: Whisper Mode</li> </ul>   |
| 3: Message    | <ul style="list-style-type: none"> <li>1: Send New Msg</li> <li>2: Voice</li> <li>3: Inbox</li> <li>4: Outbox</li> <li>5: Draft Msg</li> <li>6: Saved Msg</li> <li>7: Web Alert</li> <li>8: Msg Setting</li> <li>9: Erase Msg</li> </ul>           | 8: Voice Kit | <ul style="list-style-type: none"> <li>1: Voice Dial</li> <li>2: Voice Memo</li> <li>3: Call Screen</li> </ul>  |
| 4: Mobile Web | <ul style="list-style-type: none"> <li>1: Get In Web</li> <li>2: Prompt</li> </ul>   | 9: Setup     | <ul style="list-style-type: none"> <li>1: Location</li> <li>2: Network</li> <li>3: Data/Fax</li> <li>4: Security</li> <li>5: Call Answer</li> <li>6: Auto Answer</li> <li>7: Auto Retry</li> <li>8: Language</li> <li>9: Clock Set</li> <li>0: Version</li> </ul> |
| 5: Planner    | <ul style="list-style-type: none"> <li>1: Today</li> <li>2: Scheduler</li> <li>3: Jump To Date</li> <li>4: To Do List</li> <li>5: Memo Pad</li> <li>6: Count Down</li> <li>7: Alarm Clock</li> <li>8: World Time</li> <li>9: Calculator</li> </ul> |              |   |

Licensed by QUALCOMM Incorporated under one or more of the following Patents.

U.S. Patent No. 4,901,307	5,056,109	5,099,204
	5,101,501	5,103,459
	5,109,390	5,107,225