

**SAMSUNG**

*Draft 23-May-06*

**SCH-L160**  
**User's Guide**





# Important safety precautions



Failure to comply with the following precautions may be dangerous or illegal.

## Use road safety at all times

Do not use a hand-held phone while driving. Park the vehicle first.

## Switch off the phone when refuelling

Do not use the phone at a refuelling point (service station) or near fuels or chemicals.

## Switch off in an aircraft

Wireless phones can cause interference. Using them in an aircraft is both illegal and dangerous.

## Switch off the phone near all medical equipment

Hospitals or health care facilities may be using equipment that could be sensitive to external radio frequency energy. Follow any regulations or rules in force.

## Interference

All wireless phones may be subject to interference, which could affect their performance.



## Be aware of special regulations

Meet any special regulations in force in any area and always switch off your phone whenever it is forbidden to use it, or when it may cause interference or danger.


## Water resistance

Your phone is not water-resistant. Keep it dry.

## Sensible use

Use only in the normal position (held to the ear). Avoid unnecessary contact with the antenna when the phone is switched on.

## Emergency call

Key in the emergency number for your present location, then press .

## Keep your phone away from small children

Keep the phone and all its parts, including accessories, out of the reach of small children.

## Accessories and batteries

Use only Samsung-approved batteries and accessories, such as headsets and PC data cables. Use of any unauthorised accessories could damage you or your phone and may be dangerous.

- The phone could explode if the battery is replaced with an incorrect type.
- Dispose of used batteries according to the manufacturer's instructions.



At very high volumes, prolonged listening to a headset can damage your hearing.

## Qualified service






Only qualified service personnel may repair your phone.

For more detailed safety information, see "Health and safety information" on page 45.

# About this Guide

This User's Guide provides you with condensed information about how to use your phone. To quickly learn the basics for your phone, please refer to "Get started" and "Step outside the phone."

In this guide, the following instruction icons appear:

-  Indicates that you need to pay careful attention to the subsequent information regarding safety or phone features.
-  Indicates that you can get more information on the referenced page.
-  Indicates that you need to press the Navigation keys to scroll to the specified option and then select it.
-  Indicates a key on the phone. For example, [↶]
-  Indicates a soft key, whose function is displayed on the phone screen. For example, <Menu>

- **Simple, sleek design with Intenna**  
Samsung's powerful intenna technology allows the best call quality without an annoying external antenna.

## *Special features of your phone*



- **Countdown**  
Use your phone as a countdown timer for an important event.



- **Calendar**  
Keep track of your daily, weekly, and monthly schedule.



- **Contacts**  
Store up home, office, or cellular phone numbers for your contacts.



- **Alarm**  
Use your phone as an alarm clock to wake you up in the morning or notify you of an event.



- **Calculator**  
Perform basic calculations and do currency conversions.

- **SOS message**  
Send SOS messages to your family or friends for help in an emergency.

- **Short Message Service (SMS)**  
Chat and share interest with your friends, family, or co-workers by SMS messages.

# Contents

## **Unpack 3**

*Make sure you have each item*

## **Your phone 3**

*Keys, features, and locations*

## **Get started 4**

*First steps to operate your phone*

Install and charge the phone ..... 4

Power on or off..... 5

Keys and display ..... 6

Access menu functions ..... 8

Customize your phone..... 9

Make/answer calls ..... 11

## **Step outside the phone 11**

*Begin with your Contacts, Messages, Calendar, and Alarm*

Use Contacts..... 11

Send messages ..... 12

View messages..... 12

Manage schedule..... 13

Use the alarm clock ..... 14

## **Enter text 17**

## **Call functions 19**

## **Menu functions 22**

## **Health and safety information 45**

## Overview of menu functions

To access Menu mode, press <Menu> in Idle mode.

<b>1 Calls</b>	▶ p. 24	<b>4 Tones/Images</b>	▶ p. 32	<b>8 Planner</b>	▶ p. 36
1 Outgoing	▶ p. 24	1 Display	▶ p. 32	1 Today	▶ p. 36
2 Incoming	▶ p. 25	2 Sounds	▶ p. 33	2 Calendar	▶ p. 36
3 Missed	▶ p. 25	<b>5 Meu Vivo</b>	▶ p. 35	3 Task List	▶ p. 38
4 Erase History	▶ p. 25	1 Launch Pad	▶ p. 35	4 Memo Pad	▶ p. 38
5 Air Time	▶ p. 25	2 Ringer Type	▶ p. 35	5 Alarm	▶ p. 39
<b>2 Downloads</b>	▶ p. 26	3 Menu Style	▶ p. 35	6 Calculator	▶ p. 39
<b>3 Torpedo SMS</b>	▶ p. 27	4 Banner	▶ p. 35	7 World Time	▶ p. 40
1 New Message	▶ p. 27	5 Wallpaper	▶ p. 35	8 Count Down	▶ p. 40
2 Voice Mail	▶ p. 28	6 Orig. Settings	▶ p. 35	9 Set Time	▶ p. 40
3 Inbox	▶ p. 28	7 Msg Setting	▶ p. 35	<b>9 Settings</b>	▶ p. 41
4 Outbox	▶ p. 29	8 Auto CSP	▶ p. 35	1 Auto CSP	▶ p. 41
5 Drafts	▶ p. 29	<b>6 Voice Mail</b>	▶ p. 36	2 Auto Answer	▶ p. 41
6 Saved	▶ p. 30	<b>7 Voice Portal</b>	▶ p. 36	3 Call Answer	▶ p. 41
7 Erase Msg	▶ p. 30			4 Auto Retry	▶ p. 41
8 Setting	▶ p. 30			5 Idioma/Language	▶ p. 42
				6 System	▶ p. 42
				7 Help	▶ p. 43
				8 Security	▶ p. 43

## Unpack

Make sure you have each item



Phone



Travel Adapter



Battery



User's Guide

You can obtain various accessories from your local Samsung dealer.

The items supplied with your phone and the accessories available at your Samsung dealer may vary, depending on your country or service provider.

## Your phone

Keys, features, and locations





## Get started

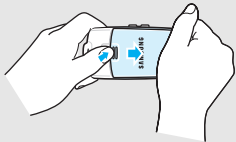
First steps to operate your phone

### UIM card information

UIM card information When you subscribe to a cellular network, you receive a plug-in UIM (User Identification Module) card loaded with your subscription details, such as your PIN, and available optional services.

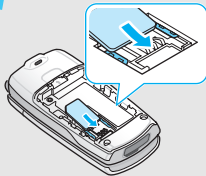
### Install and charge the phone

- 1** Remove the battery cover.



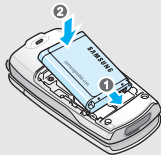
- If the phone is already on, first turn it off by pressing and holding [power].

- 2** Insert the UIM card.

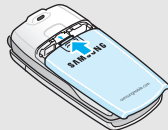


- Make sure that the gold-coloured contacts on the card are face down.

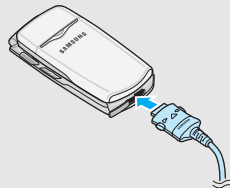
- 3** Install the battery.



- 4** Reattach the battery cover.



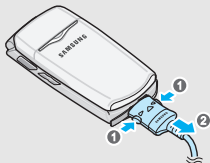
- 5** Plug the travel adapter into the phone.



- 6** Plug the adapter into a standard AC wall outlet.


**7** When the phone is completely charged (the battery icon becomes still), unplug the adapter from the wall outlet.

**8** Remove the adapter from the phone.



### Low battery indicator

When the battery is low:


- a warning tone sounds,
- the battery low message displays, and
- the empty battery icon  blinks.

If the battery level becomes too low, the phone automatically turns off. Recharge your battery.

## Power on or off

### Switch on

1. Open the phone.


2. Press and hold [].

Do not turn on the phone when mobile phone use is prohibited.

3. If necessary, enter the PIN and press [**OK**].

### Switch off

1. Open the phone.

2. Press and hold [].

## Keys and display

### Keys



Perform the function indicated on the bottom line of the display.



In Idle mode, access your favorite menus directly. ► p. 32  
In Menu mode, scroll through the menu options.



In Menu mode, select the highlighted menu option or confirm input.



Delete characters from the display.  
In Menu mode, return the display to the previous menu level.



Make or answer a call.  
In Idle mode, retrieve numbers recently dialed, missed, or received.



Press and hold to switch the phone on and off.  
End a call.  
In Menu mode, cancel input and return the phone to Idle mode.



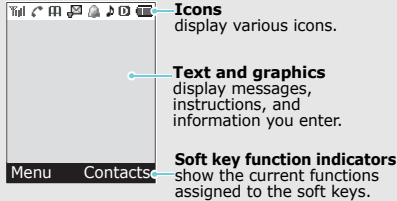
Enter numbers, letters, and some special characters.



Enter special characters.  
Press and hold [#] to activate or deactivate Silent mode.

## Display

### Layout



### Icons\*

- Received signal strength
- Call in progress
- Out of your service area; you cannot send or receive calls
- SOS message feature active  
▶ p.xx
- Auto answer mode ▶ p.41
- New text message

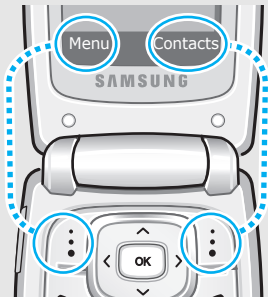
- New voice mail
- Alarm set ▶ p.39
- Ringer on/High+Vib/1 Beep mode
- Ringer off
- Silent / Vibration mode
- Roaming network
- Digital mode
- 1x RTT mode
- Battery power level

\* Depending on your country or service provider, the icons shown on the display may vary.

## Access menu functions

### Use the soft keys

The roles of the soft keys vary depending on the function you are using. The bottom line of the display indicates their current role.



Press the left soft key to access Menu mode.

Press the right soft key to access **Contacts**.

### Select an option

1. Press a desired soft key.
2. Press the Navigation keys to move to the next or previous option.
3. Press [**OK**] to confirm the function displayed or option highlighted.
4. To exit, choose either of the following methods.
  - Press <**Back**> or [**C**] to move up one level.
  - Press [] to return to Idle mode.

### Use shortcuts

Press the number key corresponding to the option you want.

## Customize your phone

---

### Display language

1. In Idle mode, press <Menu> and select **Settings** → **Idioma/Language**.
  2. Select a language.
- 

### Call ringer melody

1. In Idle mode, press <Menu> and select **Tones/Images** → **Sounds** → **Ringer Type** → **Calls**.
  2. Select a ringer category.
  3. Select a ringer melody.
  4. Press [OK].
- 

You can set a wallpaper for the display.

1. In Idle mode, press <Menu> and select **Tones/Images** → **Display** → **Wallpaper**.
  2. Scroll to an image by pressing [Left] or [Right].
  3. Press [OK].
- 

You can change the banner on the display.

1. In Idle mode, press <Menu> and select **Tones/Images** → **Display** → **Banner**.
2. Enter your banner.
3. Press [OK].

## Menu shortcuts

You can set the Navigation keys to function as shortcuts to access your favourite menus.

1. In Idle mode, press <**Menu**> and select **Tones/Images** → **Display** → **Launch pad**.
2. Select a key.
3. Select a menu to be assigned to the key.

## Silent mode

You can switch the phone to Silent mode to avoid disturbing other people with your phone sound. Press and hold [#] in Idle mode.

## Phone lock



You can protect the phone against unauthorized use with a phone password.

1. In Idle mode, press <**Menu**> and select **Settings** → **Security**.
2. Enter the default password, **0000**.
3. Select **Change Lock**.
4. Enter a new password and press [**OK**].
5. Enter the new password again and press [**OK**].
6. Select **Lock Phone**.
7. Select **On Power-Up** or **Lock Now**.



## Make/answer calls

---

### Make a call

1. Enter an area code and a phone number.
  2. Press [].
  3. To end the call, press [].
- 

### Answer a call

1. When the phone rings, press [].
2. To end the call, press [].

## Step outside the phone

*Begin with your Contacts, Messages, Calendar, and Alarm*

## Use Contacts

---

### Add an entry

1. In Idle mode, enter a phone number and press <**Save**>.
2. Select **Add New Entry** → a number type.
3. Specify contact information: Name, Entry, Home, Work, Mobile, Pager, Fax, No label, Speed dial, E-mail, URL, Group, Caller Ringer, Birthday, Secret, and Image.
4. Press [**OK**].
5. Select **Yes** to save the entry.



**Find an entry**

1. In Idle mode, press <**Contacts**>.
2. Select an entry.
3. Select a number and press [↵] to dial, or press [**OK**] to access options.

## Send messages

**Send a text message (SMS)**

1. In Idle mode, press <**Menu**> and select **Torpedo SMS** → **New Message**.
2. Enter destination numbers and press <**Next**>.
3. Enter the message text and press <**Next**>.
4. Press <**Send**>.

## View messages

**View a text message**

When a notification appears:

Press [**OK**]. The message displays.

From the Inbox:

1. In Idle mode, press <**Menu**> and select **Torpedo SMS** → **Inbox**.
2. Select a message.

## Send SOS messages

You can send an SOS message to your family or friends for help in an emergency.

### Set up SOS message options

1. In Idle mode, press **<Menu>** and select **Torpedo SMS** → **Settings** → **SOS Message**.
2. Select **On**.
3. Select the **Recipients** line.
4. Enter the phone numbers to which you want to send the SOS message and press **<Save>**.
5. Press [Down] and select the Number of times.
6. Press **[OK]** to save your settings.

### Send the SOS message

In Idle mode, with the phone closed, press [**▲**/**▼**] 4 times.

The phone sends the SOS message.

## Manage schedule

### Create a new appointment

1. In Idle mode, press **<Menu>** and select **Planner** → **Calendar**.
2. Select a date from the calendar.
3. Enter the details about the appointment and press **<Next>**.
4. Enter the starting and ending time.
5. Select an alarm option.
6. Press **<Save>**.

---

### Check your schedule

1. In Idle mode, press <Menu> and select **Planner** → **Calendar**.
2. Select a date.
3. Select an appointment from the list.

---

### Stop an alarm

When the alarm sounds, press any key.

## Use the alarm clock

---

### Set an alarm

1. In Idle mode, press <Menu> and select **Planner** → **Alarm**.
2. Select the type of the alarm.
3. Select **On** and press [Down].
4. Enter the alarm time.
5. Select a melody for the alarm.
6. Select a repeat option and press <Save>.

## Enter text

*T9 English, Alphabet, Symbol, and Number modes*

You can enter text in some features such as Torpedo SMS, Contacts, or Planner using T9 English mode, Alphabet mode, Number mode, and Symbols mode.

### Changing the text input mode

Press <Menu> and select the input mode you want.

### Using T9 English mode

T9 is a predictive text input mode that allows you to key in any character using single keystrokes.

#### Entering a word in T9 English mode

1. Press [2] to [9] to start entering a word. Press each key once for each letter.  
For example, press [4], [3], [5], [5], and [6] to enter Hello in T9 English mode.  
T9 predicts the word that you are typing, and it may change with each key that you press.

2. Enter the whole word before editing or deleting characters.
3. When the word displays correctly, go to step 4. Otherwise, press [0] to display alternative word choices for the keys that you have pressed. For example, Of and Me use [6] and [3].
4. Press [#] to insert a space and enter the next word.

#### Other T9 English mode operations

- Press [1] to enter periods or apostrophes automatically.
- Press [#] to insert a space.
- Press [\*] to change case. Lower case (**T9word**), Initial capital (**T9Word**), and Capital lock (**T9WORD**) are available.
- Press the Navigation keys to move the cursor.
- Press [C] to delete characters one by one. Press and hold [C] to clear the display.

## Using Alphabet mode

Press the appropriate key until the character you want appears on the screen.

Key	Characters in order displayed	
	Upper case	Lower case
1	. @ ? ! - , & : ' 1	
2	A B C 2	a b c 2
3	D E F 3	d e f 3
4	G H I 4	g h i 4
5	J K L 5	j k l 5
6	M N O 6	m n o 6
7	P Q R S 7	p q r s 7
8	T U V 8	t u v 8
9	W X Y Z 9	w x y z 9
0	0	

### Other Alphabet mode operations

- To enter the same letter twice or to enter a different letter on the same key, wait for the cursor to move to the right automatically or press [Right]. Then, enter the next letter.

- Press [#] to insert a space.
- Press [\*] to change case. Lower case (**abc**), Initial capital (**Abc**), and Capital lock (**ABC**) are available.
- Press [Left] or [Right] to move the cursor.
- Press [C] to delete characters one by one. Press and hold [C] to clear the display.

## Using Number mode

Number mode enables you to enter numbers.

Press the keys corresponding to the digits you want.

## Using Symbol mode

Symbol mode enables you to insert symbols.

To	Press
display more symbols	[Left] or [Right].
select a symbol	the corresponding number key.
clear the symbols	[C].

## Call functions

### Advanced calling features

#### Making a call

1. In Idle mode, enter the area code and a phone number.

Press [C] to clear the last digit or press and hold [C] to clear the whole display.

2. Press [↶].
3. When you want to end the call, press [📞]

#### Using dialing options

While entering a number, press <Menu> to access the following options:

- **4-digit Dial:** use the four digit dialing feature. This option is only available when you enter four digits.
- **Speed Dial:** use the speed dialing feature. This option is only available when you enter a number corresponding to a Contacts location.

- **Talk:** place a call to the number.
- **Save:** save the number to Contacts.
- **Find:** find the number from Contacts.
- **Hard Pause:** insert a hard pause. Numbers after the pause will be sent when you press [↶].
- **2sec Pause:** insert a 2-second pause. Numbers after the pause will be sent automatically.

#### Redialing recent numbers

1. In Idle mode, press [↶] to display the list of recent numbers.
2. Scroll to the number you want and press [↶].

#### Making a call from Contacts

Once you have stored a number in Contacts, you can dial the number by selecting it from Contacts. ▶ p. 23

#### Making an emergency call

You can make calls to standard emergency numbers, such as 190, 192, or 193 on the Emergency # list, even if your phone is locked or all outgoing calls are restricted. ▶ p. 45

## Speed dialing

When you store a number in Contact, a location number is assigned to the number so that you can dial it by entering its location number.

- For 1-digit locations, press and hold the corresponding number key.
- For other locations, press the first number key and press and hold the last number key.

## Answering a call

When you receive an incoming call, the phone rings and displays the incoming call image.

Press [↶] to answer the call.

### Tips for answering a call

- When **Any key** in the **Call Answer** menu is selected, you can press any key except for [↶] and [▲/▼]. ▶ p. 42
- When **Send Key** in the **Call Answer** menu is selected, you can press [↶]. ▶ p. 42

- When **Folder open** in the **Call Answer** menu is selected, you can simply open the phone. ▶ p. 42
- Press [🔇] to silence a call.

## Viewing missed calls

If you have missed calls, the screen displays how many calls you have missed.

Press [↶] to dial the last number.

## Using the headset

Use the headset to make or answer calls without holding the phone. Connect the headset to the jack on the left side of the phone. The button on the headset works as follows:

To	Press
redial the last call	the button twice.
answer a call	the button.
end a call	the button.

## Options during a call

You can access a number of functions during a call.

### Answering a second call

You can answer an incoming call while already on the phone, if your network supports this function.

1. Press [↶] to answer the call. The first call is automatically put on hold.
2. Press [↶] to switch between the calls.

### Using the In-call menu options

During a call, press <Menu> to access the following options:

- **SPK phone:** turn on the speakerphone feature or switch back to Normal mode.
- **Contacts:** access the **Contacts** menu to locate or store entries. ▶ p. 23
- **Mute/Quit:** switch off your phone's microphone, so that the other person cannot hear you.

- **Silent/Quit:** mute the DTMF (Dual-Tone Multi-Frequency) tones of the keys.

To communicate with answering machines or computerized telephone systems, key tones must be turned on.

- **Send Tel#:** send your phone number as the DTMF (Dual tone multi-frequency) tones.
- **Calls:** access the **Calls** menu. ▶ p. 25
- **Torpedo SMS:** access the **Torpedo SMS** menu. ▶ p. 28
- **Planner:** access the **Planner** menu. ▶ p. 37



## Menu functions

All menu options listed

### Contacts

You can store phone numbers with associated names in your phone's memory called Contacts to make it easy for you to make a call without having to remember the phone number.

To access this menu, press <**Contacts**> in Idle mode.

#### Find


---

Use this menu to search for numbers in Contacts.

- Press <**Contacts**> in Idle mode to quickly access this menu.

#### Finding an entry

1. Press [Left] or [Right] to select a search method.
2. Enter the first few letters of the name you want, or select a memory location or a caller group.

3. Select the name you want.
4. Press [] to dial the number, or <**Menu**> to access Contacts options.

### Using Contacts options

While viewing a contact, press <**Menu**> to access the following options:

- **Talk:** dial the selected number.
- **Edit:** edit the selected contact.
- **Prepend:** add an additional number, such as an area code or feature code, to the phone number.
- **Erase:** erase the selected contact.

### Add New Entry

---

Use this menu to add a new contact to Contacts.

1. Enter a phone number and press <**Next**>.
2. When **Add New Entry** is highlighted, press [**OK**].
3. Select a category type of the number.
4. Enter a name and press <**Next**>.

5. Change the settings or enter information about the contact.

**Name:** assign a name, if one has not already been entered.

**Entry:** enter the location number, if necessary.

**Home/Work/Mobile/Pager/Fax/No label:** add a number in any category.

**Speed dial:** select one of the stored numbers for speed dialing.

**E-mail:** assign an e-mail address.

**URL:** enter an URL address of the person.

**Group:** assign the number to a caller group.

**Caller Ringer:** assign a ringer melody to alert you to a call from the number.

**Birthday:** enter the birthday of the person.

**Secret:** prevent a number from being displayed when it is accessed or dialed by unauthorized users.

**Image:** assign an image as a caller ID image to alert you to a call from the number.

6. When you have finished, press [**OK**].

7. Select **Yes** to save the contact.

## Group Edit

---

Use this menu to change the settings for the caller groups.

### Changing the caller group name

1. Scroll to the group you want.
2. Press <**Menu**> and select **Rename**.
3. Clear the old name and enter a new name you want.
4. Press <**Save**>.

### Changing the ringer melody

1. Scroll to the group you want.
2. Press <**Menu**> and select **Ringer**.
3. Select the ringer category and press [Down].
4. Select the ringer melody.
5. Press [**OK**].

## My Phone#

---

Use this menu to check your phone number.

## Memory Info

---

Use this menu to display the number of contacts you have stored in Contacts.

## Calls *(Menu 1)*

Use this menu to view the calls you have missed, received, or dialed, and the length of your calls.

To access this menu, press <**Menu**> in Idle mode and select **Calls**.

## Outgoing *(Menu 1.1)*

---

This menu displays the most recent calls you have dialed.

### Accessing a call record

1. Press [Up] or [Down] to scroll through the call list.
2. Press <**View**> to view the details of a call, or [↶] to dial a number.

### Using call record options

While viewing call details, press <**Menu**> to access the following options:

- **Talk:** dial the number.
- **Save:** save the number in Contacts, if not saved.

## Menu functions

- **Show Entry:** display the phone number and memory location number.
- **Prepend:** add an additional number, such as area code or feature code, to the phone number.
- **Erase:** erase the selected number.
- **Send Msg:** send the message to the phone number.

### **Incoming** (Menu 1.2)

---

This menu displays the most recent calls you have received.

### **Missed** (Menu 1.3)

---

This menu displays the most recent calls that you did not answer.

### **Erase History** (Menu 1.4)

---

Use this menu to delete all of the records in each call type.

1. Select a call type to be cleared.
2. Select **Yes** to confirm the deletion.

### **Air Time** (Menu 1.5)

---

Use this menu to display the time log for calls made and received. The actual time invoiced by your service provider will vary.

- **Last Call:** check the length of your last call.
- **Total:** check the total length of all the calls you have dialed and received.
- **Life Time:** check the number and total duration of all the calls you have dialed and received since the phone was shipped from the factory.
- **Erase Total:** erase the total call timers, except for Life Time.

## Downloads *(Menu 2)*

Use this menu to download a variety of Brew applications from the preset Brew server and change the browser settings. You can also play the downloaded media files, as well as view help information.

To access this menu, press <Menu> in Idle mode and select **Downloads**.

### Downloading an application

---

You can access the Brew server and download applications.

1. Select **Download Center**.

The following menus are available:

- **Catalog**: browse and purchase items.
- **Search**: search for an application by entering a keyword.
- **About Download**: get help information for using the **Download Center** menu.

2. Select **Catalog**. You are connected to the associated website preset by your service provider and you can browse the available applications.

When **Airtime Warnings** is set to **All Enabled**, you are prompted to connect to the server.

3. Select the application you want and follow the onscreen instructions to download it.

### Changing browser settings

---

You can change the settings for using the Brew server and downloaded applications.

1. Select **Settings**.
2. Select a setting option.
  - **Order Apps**: change the list order of the downloaded applications.
  - **Move Apps**: move an application to another folder.
  - **Manage Apps**: check the amount of memory used for downloaded applications.
  - **Main Menu View**: change the view mode of the main menu screen.

## Menu functions

- **Screen Savers:** activate the screen saver application, if downloaded.
- **Airtime Warnings:** set the phone to alert you each time you access the Brew server.
- **View Log:** show the records of your browsing.

### Viewing help information

---

You can view help information for using the Brew server.

1. Select **Help**.
2. Select a help item.
3. Press [Up] or [Down] to scroll through help information.
4. Press [**OK**] to go back to the main help screen.

### Torpedo SMS (Menu 3)

Use this menu to store all of the SMS messages you have received, sent, or failed to send, or saved.

To access this menu, press <**Menu**> in Idle mode and select **Torpedo SMS**.

### New Message (Menu 3.1)

---

You can create a short text message and send it to other mobile phones.

1. Enter a destination number and press <**Next**>. To send the message to more than one recipient, press [Right] and add additional numbers.
2. Enter your message and press <**Next**>.
3. Specify the following settings:
  - **Send To:** change the destination number or add more destination numbers.
  - **Msg:** change the message text you have already entered.
  - **Call Back #:** change the callback number.
  - **Options:** change the SMS settings for sending the message.

**Priority:** select a priority level.

**Delivery Ack:** set the network to inform you when your message is delivered.

**Message Save:** set how the phone acts for sent messages.

- **Auto Save:** the phone immediately saves a copy of the message.

- **Do Not Save:** the phone does not save the message in the Outbox.

- **Prompt Save:** the phone prompts you to save the message.

- **Draft:** save the message in the Drafts folder.

4. When you have finished, press <**Send**> to send the message.

## Voice Mail *(Menu 3.2)*

---

When you access this menu, the display shows the latest voice mail notification. Scroll to the notification you want by pressing the Navigation keys.

- Press <**Call**> to access the voice mail server to listen to the message.
- Press <**Options**> to access the following options:
  - Listen:** access the voice mail server to listen to the message.
  - Clear Icon:** clear the selected notification.




## Inbox *(Menu 3.3)*

---

This folder stores all of the messages you have received.

### Viewing a message

The following icons may appear on the message list:

-  has been read
-  has not been read
-  Urgent messages (Red: unread messages, Blue: read message)

## Menu functions

From the message list, select the message you want to view.

While viewing a message, press <**Options**> to access the following options:



- **Reply**: reply to the sender.
- **Forward**: forward the message to other people.
- **Erase**: erase the message.
- **Talk**: call the sender.
- **Save**: save the sender's number to Contacts.
- **Move**: move the message from the Inbox to the Saved box.
- **Extract#'s**: extract phone numbers from the message text.

## Outbox (Menu 3.4)

---

This folder stores messages that the phone is attempting to send, or has failed to send.

The following icons are available to show the message status:

-  has been sent
-  has been opened

While viewing a message, press <**Options**> to access the following options:

- **Resend**: send the message.
- **Erase**: erase the message.

## Drafts (Menu 3.5)

---

This folder stores messages you have saved to send at a later time.

While viewing a message, press <**Options**> to access the following options:

- **Resend**: send the message.
- **Erase**: erase the message.



## **Saved** (Menu 3.6)

---

This folder stores messages you have sent from the Inbox to this folder.

While viewing a message, press <**Options**> to access the following options:

- **Resend**: send the message.
- **Erase**: erase the message.

## **Erase Msg** (Menu 3.7)

---

Use this menu to erase all of the messages in each message folder.

1. Select the message folder to be cleared.
2. Select **Yes** to confirm the deletion.

## **Setting** (Menu 3.8)

---

Use this menu to set up options for using SMS messages.

- **Scroll Timer**: select the scrolling time. When you select **Off**, you need to manually scroll the screen.
- **Msg Reminder**: set how often the phone reminds you of new messages.
- **Auto Erase**: set what happens if new messages arrive when the Inbox is full.  
**On**: the phone automatically erases old messages in order to receive new messages.  
**Off**: the phone alerts you that new messages are being rejected because the Inbox is full.
- **New Message**: change the settings for new messages.  
**Callback #**: enter a callback number.  
**Save Message**: set how the phone acts for sent messages.  
- **Do Not Save**: the phone does not save the message in the Outbox.

- **Prompt Save:** the phone prompts you to save the message.
- **Auto Save:** the phone immediately saves a copy of the message.

**Entry Method:** select a default text input mode when creating a new message.

**Delivery Ack:** set the network to inform you when your message is delivered.

- **Canned Msg:** edit the preset canned messages and make new canned messages. You can use the messages when writing a message.
- **Msg Alert:** set how the phone alerts you to new messages during a call.

**On:** the phone alerts you with a beep and displays the corresponding icon.

**Off:** the phone does not actively alert you to new messages, but displays the corresponding icon.

- **SOS message:** set whether or not to use the SOS message feature. In an emergency, you can send SOS messages to your family or friends for help. Use this menu to specify options for sending and receiving SOS messages.

**On:** activate or deactivate the SOS message feature. To send an SOS message, press [▲/▼] 4 times in Idle mode, with the phone closed.

While the phone is attempting to send an SOS message, you cannot access menu functions. Use the phone as normal when the 📞 icon becomes still, or press [📞] to exit Emergency mode.

**Recipients:** specify the phone numbers to which you want to send SOS messages.

**Number of sending:** set the number of times the phone repeats sending SOS messages.

**Message:** check the preset SOS message text.

## **Tones/Images** (Menu 4)

Use this menu to change settings for the display and the sounds.

To access this menu, press <**Menu**> in Idle mode and select **Tones/Images**.

### **Display** (Menu 4.1)

---

Use this menu to change settings for the display and light.

#### **Menu Style** (Menu 4.1.1)

Use this menu to select a menu style.

#### **Wallpaper** (Menu 4.1.2)

Use this menu to change the background image to be displayed in Idle mode.

#### **Backlight** (Menu 4.1.3)

Use this menu to customize settings for backlight.

- **Main Display:** change the display backlight settings.  
**Duration:** specify the length of time the display backlight stays on.

**Brightness:** adjust the brightness of the display for varying lighting conditions.

- **Keypad:** specify the length of time the keypad backlight stays on.
- **Pwr Save Mode:** set the phone to turn the display off when you do not use the phone.

#### **Banner** (Menu 4.1.4)

Use this menu to set a banner message to be displayed at the bottom of the display in Idle mode.

#### **Launch Pad** (Menu 4.1.5)

Use this menu to set the shortcut assignments for the Navigation keys.

1. Select the key you want.
2. Select the menu to be assigned to the key.

### **Dual Clock** (Menu 4.1.6)

Use this menu to select two time zones to be displayed when you select **Dual Clock** for the wallpaper image.

▶ p. 33

1. Scroll to **Location** by pressing [Left] or [Right].
2. Scroll to the **P1** field and press [Left] or [Right] to select the time zone for the left clock.
3. Scroll to the **P2** field and press [Left] or [Right] to select the time zone for the right clock.
4. Press [OK].

You can apply the daylight saving time for each clock. Scroll to **DST** by pressing [Left] or [Right] and scroll to the **P1** or **P2** field. Select **On** and press [OK].

### **Contrast** (Menu 4.1.7)

You can adjust the contrast of the brightness for the display. Adjust the setting with the display brightness to see the display clearly in different lighting conditions.

### **Sounds** (Menu 4.2)

---

Use this menu to customize various sound settings.

#### **Ringer Volume** (Menu 4.2.1)

Use this menu to select a ringer volume for incoming calls, message alert, alarm settings, and scheduler alarm.

- **Silent:** the phone neither vibrates nor rings.
- **Vibrate:** the phone vibrates.
- **1-Beep:** the phone sound a beep.
- **Level 1~8:** you can select a volume for the call ringer.
- **High+Vib:** the phone vibrates and then rings at the same time.

#### **Ringer Type** (Menu 4.2.2)

Use this menu to select the ringer type for incoming calls, message alert, or scheduler alarm.

### **Keytone** (Menu 4.2.3)

Use this menu to set up the key tone that the phone sounds when you press a key.

- **Type:** select a tone that the phone sounds when you press a key.
- **Volume:** adjust the keytone volume.

### **Alerts** (Menu 4.2.4)

Use this menu to set up audible alerts to inform you that certain things have happened.

- **Minute Beep:** set the phone to beep every minute during an outgoing call to keep you informed of the length of your call.
- **Service Alert:** set the phone to beep when you exit a service area or return to a service area.
- **Call Connect:** set the phone to beep when your call is connected to the system.
- **Call Disconnect:** set the phone to beep when your call is disconnected from the system.
- **Signal Fade:** set the phone to beep when a dropped call occurs during conversation in response to fading signal strength.

- **Roaming Alerts:** set the phone to beep when your phone starts roaming.

### **Roam Ringer** (Menu 4.2.5)

Use this menu to set the phone to sound a distinctive ring when your phone starts roaming.

### **Tone Length** (Menu 4.2.6)

Use this menu to set short or long DTMF (dual-tone multi-frequency) tones to be sent to access teleservices, such as a bank account. If the service is digital, as most are, short DTMF tones will almost always work.

### **Power On/Off** (Menu 4.2.7)

Use this menu to turn on or off the tone that the phone sounds when it is switched on or off.

## **Meu Vivo** *(Menu 5)*

Vivo Menu mode, provided by your service provider, contains the customizing menus to allow you to change your phone's settings, such as display and sound setting.

In Vivo Menu mode, you can more quickly and easily access the menus and change the settings as your preferences.

To access this menu, press <**Menu**> in Idle mode and select **Meu vivo**.

---

## **Launch Pad** *(Menu 5.1)*

Use this menu to set the shortcut assignments for the Navigation keys. ▶ p. 33

---

## **Ringer Type** *(Menu 5.2)*

Use this menu to select the ringer type for incoming calls, message alert, or scheduler alarm.

---

## **Menu Style** *(Menu 5.3)*

Use this menu to select a menu style.

---

## **Banner** *(Menu 5.4)*

Use this menu to set a banner message to be displayed at the bottom of the display in Idle mode.

---

## **Wallpaper** *(Menu 5.5)*

Use this menu to change the background image to be displayed in Idle mode.

---

## **Orig. Settings** *(Menu 5.6)*

Use this menu to reset the display settings and sound settings individually.

---

## **Msg Setting** *(Menu 5.7)*

Use this menu to customize settings for using SMS messages. ▶ p. 31

---

## **Auto CSP** *(Menu 5.8)*

Use this menu to set the phone to automatically add the CSP (Carrier Selection Code) of your long distance call service to the entered number when making a call.

▶ p. 42

## Voice Mail *(Menu 6)*

Use this menu to connect to the voice mail server to access your voice mails.

To access this menu, press <**Menu**> in Idle mode and select **Voice Mail**.

For further details, contact your service provider.

- You must enter the voice server number before you access your voice mails. Your service provider can give the voice server number.

## Voice Portal *(Menu 7)*

Use this menu to access this voice-activated service and get audio content, such as headline news, information on movies, the weather, finance, and traffic, supplied by your service provider.

To access this menu, press <**Menu**> in Idle mode and select **Voice Portal**.

For further details, contact your service provider.

## Planner *(Menu 8)*

The Planner feature enables you to keep track of your schedule and tasks. You can also use convenient features, such as a calculator, memo pad, and count down timer.

It also enables you to use the phone as a calculator, to count down to a specified day, and to set the current time and date.

### **Today** *(Menu 8.1)*

---

Use this menu to display Planner items stored for the current day.

For further details about storing items, see the **Calendar** menu.

### **Calendar** *(Menu 8.2)*

---

When you enter the **Calendar** menu, the calendar in Month view appears with today's date indicated by a colored box.

### Selecting a day on the calendar

- Press [Left] or [Right] to move by day.
- Press [Up] or [Down] to move by week.
- Press [ $\blacktriangle$ / $\blacktriangledown$ ] to move by month.

### Entering a new item

1. Scroll to a date on the calendar.
2. Press <Menu> and select **Add New**.
3. Enter item details and press <Next>.
4. Enter the starting and ending time and date for the item.

You can change between AM and PM in 12-hour time format. Press [2] for **A**(AM) or [7] for **P**(PM).

5. Select when an alarm alerts you to your item.
6. Press [**OK**] or <Save> to save the item.

### Viewing an item

Square brackets on a calendar date indicate items scheduled for that day:

1. Select a date on the calendar to display the items for the day.
2. Select an item to view its details.

While viewing an item, press <Menu> to access the following options:

- **Edit**: edit item information.
- **Erase**: erase the selected item.
- **Add New**: add a new item.

### Using calendar options

On the calendar, press <Menu> to access the following options:

- **View**: access the stored items for that date.
- **Add New**: add a new item.
- **Erase All**: erase all of the items.
- **Jump to date**: go to a specific date you entered.



## Task List (Menu 8.3)

---

Use this menu to create a list of tasks that need to be done.

### Creating a new task

1. Enter the task content and press <**Next**>.
2. Enter a deadline time and date.
3. Select a priority from the **Priority** line.
4. Press <**Save**>.

### Viewing a task

Select a task from the list.

While viewing a task, press <**Menu**> to access the following options:

- **Edit:** edit the selected task.
- **Erase:** erase the selected task.
- **Add New:** add a new task.

## Memo Pad (Menu 8.4)

---

Use this menu to make memos of important things you need to remember.

### Creating a new memo

1. Enter a memo.
2. Press <**Save**>.

### Viewing a memo

1. Select a memo from the list.
2. Press [**OK**] to view the memo details.

While viewing a memo, press <**Menu**> to access the following options:

- **Edit:** edit the memo.
- **Erase:** erase the selected memo.
- **Add New:** add a new memo.

## **Alarm** (Menu 8.5)

---

Use this menu to set alarms to sound at specific times.

### **Setting an alarm**

1. Select the type of alarm.
2. Select **On** and press [Down].
3. Enter the alarm time to sound.
4. Select a melody for the alarm and press [Down].
5. Select a repeat option and press <**Save**>.

### **Stopping an alarm**

- Press any key to stop the alarm.
- To deactivate an alarm setting, select an alarm you have set and select **Off** and press <**Save**>.

## **Calculator** (Menu 8.6)

---

Use this menu to perform basic arithmetic functions, such as addition, subtraction, multiplication, and division.

1. Enter the first number.
  - Press [ \* ] to insert a decimal point.
  - Press [ # ] to change the sign of a number to a negative (-).
2. Press one of the Navigation keys to access the math function you want.
3. Enter the second number.
4. Press [**OK**] to view the result.
5. If necessary, repeat from step 2 to continue the calculation.

## **World Time** (Menu 8.7)

---

Use this menu to find out the current time in another part of the world.

Scroll through the map by pressing the Navigation keys.

To apply the DST (Daylight Saving Time) setting, press **<Set DST>**.

## **Count Down** (Menu 8.8)

---

Use this menu to set a timer to count down how many days are left until a target date and to sound an alarm at a specified date and time to alert you to a specific event.

1. Enter information for the count down timer and press **<Next>**.
2. Enter the date you want to count down from and press **<Save>**.

While viewing a timer, press **<Menu>** to access the following options:

- **Edit**: edit the selected timer.
- **Erase**: erase the selected timer.
- **Add new**: add a new timer.

## **Set Time** (Menu 8.9)

---

When you need to manually enter the current time and date in specific area where call service reception is weak, use this menu to set the time and date on the Idle mode. Enter the time and date and press **[OK]**.

### Setup (Menu 9)

Many different features of your phone's system can be customized to suit your preferences.

To access this menu, press <Menu> in Idle mode and select **Setup**.

### Auto CSP (Menu 9.1)

---

Use this menu to set the phone to automatically add the CSP (Carrier Selection Code) of your long distance call service to the entered number when making a call.

#### On/Off (Menu 9.1.1)

You can set whether or not to activate the Auto CSP feature.

#### Code Setting (Menu 9.1.2)

You can set the 2 digit carrier code to be added to the phone number. Enter the carrier code you want and press [OK].

- Before setting the carrier code, you should enable the **On/Off** menu first. The code is added only when the phone number has 6,7,10, or 11 digits and starts with 0xx, for example, 012 or 015.

### Auto Answer (Menu 9.2)

---

Use this menu to set the phone to automatically answer calls after a specified time when you use the headset.

### Call Answer (Menu 9.3)

---

Use this menu to set how to answer incoming calls.

- **Any Key:** the phone answers calls when you press any key except for [Ⓜ] and [▲/▼].
- **Send Key:** the phone answers calls only when you press [↵].
- **Folder Open:** the phone answers when you open the phone. If the phone is already open, press [↵].

### Auto Retry (Menu 9.4)

---

Use this menu to set the phone to automatically redial calls after a specified length of time when a connection fails.

## **Idioma/Language** (Menu 9.5)

---

Use this menu to select a language for the display text.

## **System** (Menu 9.6)

---

This menu provides you with options for selecting a network.


### **Select NAM** (Menu 9.6.1)


Your phone can have two NAMs (Numerical Assignment Module), essentially your phone number. Use this menu to switch your service back and forth between the two.

If you change the NAM, the phone turns off by itself and then back on to acquire service using the new NAM.

## **Set System** (Menu 9.6.2)

Roaming allows you to register your phone on other networks and use the facilities, if your own network is not available. Roaming is only relevant in areas where there are at least two cellular service providers having valid roaming agreements.

When you are using another network, the Roaming icon () appears.

- **Home Only:** you cannot roam. When your home system is not available, and the No service icon () appears and you cannot make or receive calls.
- **Standard:** your phone automatically searches for the first available service.

### **PRL Enable** (Menu 9.6.3)

Your phone can find a cellular service provider's network on the Preferred Roaming List (PRL), a graded list of bands and channels which the phone uses when it attempts to locate and connect to a network while roaming. Use this menu to activate or deactivate the use of the PRL.

## Menu functions

- **Yes:** the phone searches and lists all of the network providers' networks available for your area.
- **No:** the phone searches for the default channel to locate your own network.

### Help (Menu 9.7)

---

Use this menu to view information about your phone.

#### Customer Care Center (Menu 9.7.1)

Use this menu to connect to the customer care centre.

#### Phone Info (Menu 9.7.2)

Use this menu to check your phone information, such as the version of the software and hardware or your phone number.

### Security (Menu 9.8)

---

Use this menu to protect the phone against unauthorized use.

To access the **Security** menu, you must enter the phone password. The password is preset to **0000**.

#### Lock Phone (Menu 9.8.1)

Use this menu to lock the phone.

- **Unlocked:** the phone remains unlocked.
- **On Power-Up:** the phone is locked automatically each time you turn it on.
- **Lock Now:** the phone is locked immediately.

When the phone is locked, you must enter your phone password each time you access menu functions.

#### Change Lock (Menu 9.8.2)

Use this menu to change your phone password. The password is preset to **0000**.

**Call Restriction** (Menu 9.8.3)

Use this menu to restrict all outgoing call functions on the phone and access to your Contacts.

When this feature is enabled, you must enter the phone password to access restricted functions. The password is preset to **0000**.

**Emergency #** (Menu 9.8.4)

Use this menu to store emergency numbers, which can be manually dialed at any time even if all call functions are restricted or your phone is in Lock mode.

To make an emergency call in Lock mode, enter a programmed number and then press [↵].

**IMPORTANT NOTICE**

Emergency calling may not be available on all wireless networks at all times. A connection cannot always be guaranteed, due to various transmission methods, network parameters, and user settings used to complete a call from your wireless phone.

DO NOT depend on this phone as a primary method of dialing 190, 192, 193 or for any other essential or emergency communications.

Remember to always turn your phone on and check for adequate signal strength before placing a call.

**Erase Contacts** (Menu 9.8.5)

Use this menu to erase all data stored in the phone's memory.

**Reset Phone** (Menu 9.8.6)

Use this menu to reset the original phone settings, display settings, and sound settings individually.

## *Health and safety information*

### **Exposure to radio frequency (RF) signals**

Your wireless phone is a radio transmitter and receiver. It is designed and manufactured not to exceed the emission limits for exposure to radio frequency (RF) energy set by the Federal Communications Commission (FCC) of the U.S. Government. These limits are part of comprehensive guidelines and establish permitted levels of RF energy for the general population. The guidelines are based on the safety standards that were developed by independent scientific organizations through periodic and through evaluation of scientific studies.

The standards include a substantial safety margin designed to assure the safety of all persons, regardless of age and health.

The exposure standard for wireless phones employs a unit of measurement known as Specific Absorption Rate (SAR). The SAR limit recommended by the FCC is 1.6W/kg.\*

SAR tests are conducted using standard operating positions specified by the FCC with the phone transmitting at its highest certified power level in all tested frequency

bands. Although the SAR is determined at the highest certified power level, the actual SAR level of the phone while operating can be well below the maximum value. This is because the phone is designed to operate at multiple power levels so as to use only the power required to reach the network. In general, the closer you are to a wireless base station antenna, the lower the power output of the phone.

Before a new model phone is available for sale to the public, it must be tested and certified to the FCC that it does not exceed the limit established by the government adopted requirement for safe exposure. The tests are performed in positions and locations (e.g., at the ear and worn on the body) as required by the FCC for each model. While there may be differences between the SAR levels of various phones and at various positions, they all meet the government requirement.

---

\* In the U.S. and Canada, the SAR limit for mobile phones used by the public is 1.6 watts/kg (W/kg) averaged over one gram of tissue. The standard incorporates a substantial margin of safety to give additional protection for the public and to account for any variations in measurements.



The FCC has granted an Equipment Authorization for this model phone with all reported SAR levels evaluated as in compliance with the FCC RF exposure guidelines. SAR information on this model phone is on file with the FCC and can be found under the Display Grant section of <http://www.fcc.gov/oet/fccid> after searching on FCC ID printed in the label on the phone.

## **For body operation**

---

For body worn operation, this model phone has been tested and meets the FCC RF exposure guidelines when used with a Samsung-supplied or approved accessory designated for this product or when used with an accessory that contains no metal and that positions the handset a minimum from the body.

The minimum distance for this model phone is written in the FCC certification information from the body. None compliance with the above conditions may violate FCC RF exposure guidelines.

For more Information concerning exposure to radio frequency signals, see the following websites:

Federal Communications Commission (FCC)

<http://www.fcc.gov>

Cellular Telecommunications Industry Association (CTIA):

<http://www.wow-com.com>

U.S. Food and Drug Administration (FDA)

<http://www.fda.gov/cdrh/consumer>

World Health Organization (WHO)

<http://www.who.int/peh-emf/en>

## **Precautions when using batteries**

---

Never use any charger or battery that is damaged in any way.

Use the battery only for its intended purpose.

If you use the phone near the network's base station, it uses less power; talk and standby time are greatly affected by the signal strength on the cellular network and the parameters set by the network operator.

Battery charging time depends on the remaining battery charge, the type of battery and the charger used. The battery can be charged and discharged hundreds of times, but it will gradually wear out. When the operation time

(talk time and standby time) is noticeably shorter than normal, it is time to buy a new battery.

If left unused, a fully charged battery will discharge itself over time.

Use only Samsung-approved batteries and recharge your battery only with Samsung-approved chargers. When a charger is not in use, disconnect it from the power source. Do not leave the battery connected to a charger for more than a week, since overcharging may shorten its life.

Extreme temperatures will affect the charging capacity of your battery: it may require cooling or warming first.

Do not leave the battery in hot or cold places, such as in a car in summer or winter conditions, as you will reduce the capacity and lifetime of the battery. Always try to keep the battery at room temperature. A phone with a hot or cold battery may temporarily not work, even when the battery is fully charged. Li-ion batteries are particularly affected by temperatures below 0 °C (32 °F).

Do not short-circuit the battery. Accidental short-circuiting can occur when a metallic object (coin, clip or pen) causes a direct connection between the + and - terminals of the battery (metal strips on the battery), for example when

you carry a spare battery in a pocket or bag. Short-circuiting the terminals may damage the battery or the object causing the short-circuiting.

Dispose of used batteries in accordance with local regulations. Always recycle. Do not dispose of batteries in a fire.

## **Road safety**

---

Your wireless phone gives you the powerful ability to communicate by voice, almost anywhere, anytime. But an important responsibility accompanies the benefits of wireless phones, one that every user must uphold.

When driving a car, driving is your first responsibility. When using your wireless phone behind the wheel of a car, practice good common sense and remember the following tips:

Get to know your wireless phone and its features, such as speed dial and redial. If available, these features help you to place your call without taking your attention off the road.

When available, use a hands-free device. If possible, add an extra layer of convenience and safety to your wireless

phone with one of the many hands-free accessories available today.

Position your wireless phone within easy reach. Be able to access your wireless phone without removing your eyes from the road. If you get an incoming call at an inconvenient time, let your voice mail answer it for you.

Let the person you are speaking with know you are driving; if necessary, suspend the call in heavy traffic or hazardous weather conditions. Rain, sleet, snow, ice, and even heavy traffic can be hazardous.

Do not take notes or look up phone numbers while driving. Jotting down a To Do list or flipping through your Address Book takes your attention away from your primary responsibility, driving safely.

Dial sensibly and assess the traffic; if possible, place calls when you are not moving or before pulling into traffic. Try to plan calls when your car will be stationary. If you need to make a call while moving, dial only a few numbers, check the road and your mirrors, then continue.

Do not engage in stressful or emotional conversations that may be distracting. Make the people with whom you are talking aware that you are driving and suspend

conversations that have the potential to divert your attention from the road.

Use your wireless phone to call for help. Dial the emergency number in the case of fire, traffic accident or medical emergencies. Remember, it is a free call on your wireless phone!

Use your wireless phone to help others in emergencies. If you see a car accident, crime in progress or other serious emergency where lives are in danger, call the emergency number, as you would want others to do for you.

If you see a broken-down vehicle posing no serious hazard, a broken traffic signal, a minor traffic accident where no one appears injured, or a vehicle you know to be stolen, call roadside assistance or any other special non-emergency wireless number.

## **Operating environment**

---

Remember to follow any special regulations in force in any area and always switch off your phone whenever it is forbidden to use it, or when it may cause interference or danger.

When connecting the phone or any accessory to another device, read its user's guide for detailed safety instructions. Do not connect incompatible products.

As with other mobile radio transmitting equipment, users are advised that for the satisfactory operation of the equipment and for the safety of personnel, it is recommended that the equipment should only be used in the normal operating position (held to your ear with the antenna pointing over your shoulder).

### **Electronic devices**

---

Most modern electronic equipment is shielded from radio frequency (RF) signals. However, certain electronic equipment may not be shielded against the RF signals from your wireless phone. Consult the manufacturer to discuss alternatives.

#### **Pacemakers**

Pacemaker manufacturers recommend that a minimum distance of 15 cm (6 inches) be maintained between a wireless phone and a pacemaker to avoid potential interference with the pacemaker. These recommendations

are consistent with the independent research and recommendations of Wireless Technology Research.

Persons with pacemakers:

should always keep the phone more than 15 cm (6 inches) from their pacemaker when the phone is switched on.

should not carry the phone in a breast pocket.

should use the ear opposite the pacemaker to minimize potential interference.

If you have any reason to suspect that interference is taking place, switch off your phone immediately.

#### **Hearing aids**

Some digital wireless phones may interfere with some hearing aids. In the event of such interference, you may wish to consult your hearing aid manufacturer to discuss alternatives.

#### **Other medical devices**

If you use any other personal medical devices, consult the manufacturer of your device to determine if it is adequately shielded from external RF energy. Your physician may be able to assist you in obtaining this

information. Switch off your phone in health care facilities when any regulations posted in these areas instruct you to do so. Hospitals or health care facilities may be using equipment that could be sensitive to external RF energy.

## **Vehicles**

RF signals may affect improperly installed or inadequately shielded electronic systems in motor vehicles. Check with the manufacturer or its representative regarding your vehicle. You should also consult the manufacturer of any equipment that has been added to your vehicle. You should also consult the manufacturer of any equipment that has been added to your vehicle.

## **Posted facilities**

Switch off your phone in any facility where posted notices require you to do so.

## **Potentially explosive environments**

---

Switch off your phone when in any area with a potentially explosive atmosphere and obey all signs and instructions. Sparks in such areas could cause an explosion or fire resulting in bodily injury or even death.

Users are advised to switch off the phone while at a refueling point (service station). Users are reminded of the need to observe restrictions on the use of radio equipment in fuel depots (fuel storage and distribution areas), chemical plants or where blasting operations are in progress.

Areas with a potentially explosive atmosphere are often but not always clearly marked. They include the areas below deck on boats, chemical transfer or storage facilities, vehicles using liquefied petroleum gas (such as propane or butane), areas where the air contains chemicals or particles, such as grain, dust or metal powders, and any other area where you would normally be advised to turn off your vehicle engine.

## **Emergency calls**

---

This phone, like any wireless phone, operates using radio signals, wireless and landline networks as well as user-programmed functions, which cannot guarantee connection in all conditions. Therefore, you should never rely solely on any wireless phone for essential communications (medical emergencies, for example).

Remember, to make or receive any calls the phone must be switched on and in a service area with adequate signal strength. Emergency calls may not be possible on all wireless phone networks or when certain network services and/or phone features are in use. Check with local service providers.

To make an emergency call:

If the phone is not on, switch it on.

Key in the emergency number for your present location (for example, 911 or other official emergency number). Emergency numbers vary by location.

Press .

If certain features are in use (call barring, for example), you may first need to deactivate those features before you can make an emergency call. Consult this document and your local cellular service provider.

When making an emergency call, remember to give all the necessary information as accurately as possible.

Remember that your phone may be the only means of communication at the scene of an accident; do not end the call until given permission to do so.

## FCC Notice and Cautions

---

### FCC Notice

- The device complies with Part 15 of the FCC Rules. Operation is subject to the following two conditions: (1) this device may not cause harmful interference, and (2) this device must accept any interference received, including interference that may cause undesired operation.
- This equipment has been tested and found to comply with the limits for a Class B digital device, pursuant to part 15 of the FCC Rules. These limits are designed to provide reasonable protection against harmful interference in a residential installation. This equipment generates, uses and can radiate radio frequency energy and, if not installed and used in accordance with the instructions, may cause harmful interference to radio communications. However, there is no guarantee that interference will occur in a particular installation.



If this equipment does cause harmful interference to radio or television reception, which can be determined by turning the equipment off and on, the user is encouraged to try to correct the interference by one or more of the following measures:

- Reorient or relocate the receiving antenna.
- Increase the separation between the equipment and receiver.
- Connect the equipment into an outlet on a circuit different from that to which the receiver is connected.
- Consult the dealer or an experienced radio/TV technician for help.

The phone may cause TV or radio interference if used in close proximity to receiving equipment. The FCC can require you to stop using the phone if such interference cannot be eliminated.

Vehicles using liquefied petroleum gas (such as propane or butane) must comply with the National Fire Protection Standard (NFPA-58). For a copy of this standard, contact the National Fire Protection Association, One Batterymarch Park, Quincy, MA 02269, Attn: Publication Sales Division.

## Cautions

Changes or modifications made in the radio phone, not expressly approved by Samsung, will void the user's authority to operate the equipment.

Only use approved batteries, antennas and chargers. The use of any unauthorized accessories may be dangerous and void the phone warranty if said accessories cause damage or a defect to the phone.

Although your phone is quite sturdy, it is a complex piece of equipment and can be broken. Avoid dropping, hitting, bending or sitting on it.

## Other important safety information

---

Only qualified personnel should service the phone or install the phone in a vehicle. Faulty installation or service may be dangerous and may invalidate any warranty applicable to the device.

Check regularly that all wireless phone equipment in your vehicle is mounted and operating properly.

Do not store or carry flammable liquids, gases, or explosive materials in the same compartment as the phone, its parts or accessories.

## *Health and safety information*

For vehicles equipped with an air bag, remember that an air bag inflates with great force. Do not place objects, including both installed or portable wireless equipment in the area over the air bag or in the air bag deployment area. If wireless equipment is improperly installed and the air bag inflates, serious injury could result.

Switch off your phone before boarding an aircraft. The use of wireless phones in aircraft is illegal and may be dangerous to the aircraft's operation.

Failure to observe these instructions may lead to the suspension or denial of telephone services to the offender, or legal action, or both.

## **Care and maintenance**

---

Your phone is a product of superior design and craftsmanship and should be treated with care. The suggestions below will help you fulfill any warranty obligations and allow you to enjoy this product for many years:

Keep the phone and all its parts and accessories out of the reach of small children's.

Keep the phone dry. Precipitation, humidity and liquids contain minerals that will corrode electronic circuits.

Do not use the phone with a wet hand. Doing so may cause an electric shock to you or damage to the phone.

Do not use or store the phone in dusty, dirty areas, as its moving parts may be damaged.

Do not store the phone in hot areas. High temperatures can shorten the life of electronic devices, damage batteries, and warp or melt certain plastics.

Do not store the phone in cold areas. When the phone warms up to its normal operating temperature, moisture can form inside the phone, which may damage the phone's electronic circuit boards.

Do not drop, knock or shake the phone. Rough handling can break internal circuit boards.

Do not use harsh chemicals, cleaning solvents or strong detergents to clean the phone. Wipe it with a soft cloth slightly dampened in a mild soap-and-water solution.

Do not paint the phone. Paint can clog the device's moving parts and prevent proper operation.



Do not put the phone in or on heating devices, such as a microwave oven, a stove or a radiator. The phone may explode when overheated.

Use only the supplied or an approved replacement antenna. Unauthorized antennas or modified accessories may damage the phone and violate regulations governing radio devices.

If the phone, battery, charger or any accessory is not working properly, take it to your nearest qualified service facility. The personnel there will assist you, and if necessary, arrange for service.

## **Acknowledging special precautions and the FCC and industry canada notice**

### **Cautions**

Modifications not expressly approved by the party responsible for compliance could void the user's authority to operate the equipment.

### **FCC Compliance information**

This device complies with Part 15 of FCC Rules. Operation is subject to the following two conditions:

This device may not cause harmful interference, and

This device must accept any interference received.

Including interference that may cause undesired operation.

### **Information to user**

This equipment has been tested and found to comply with the limits for a Class B digital device, pursuant to part 15 of the FCC Rules. These limits are designed to provide reasonable protection against harmful interference in a residential installation.

This equipment generates, uses and can radiate radio frequency energy and, if not installed and used in accordance with the instructions, may cause harmful interference to radio communications. However, there is no guarantee that interference will not occur in a particular installation. If this equipment does cause harmful interference to radio or television reception, which can be determined by turning the equipment off and on, the user is encouraged to try to correct the interference by one or more of the following measures:

Reorient or relocate the receiving antenna.

Increase the separation between the equipment and receiver.

Connect the equipment into an outlet on a circuit different from that to which the receiver is connected.

Consult the dealer or an experienced radio/ TV technician for help.

## **Appendix A: CERTIFICATION INFORMATION (SAR)**

THIS MODEL PHONE MEETS THE GOVERNMENT'S REQUIREMENTS FOR EXPOSURE TO RADIO WAVES.

Your wireless phone is a radio transmitter and receiver. It is designed and manufactured not to exceed the emission limits for exposure to radio frequency (RF) energy set by the Federal Communications Commission of the U.S. Government. These limits are part of comprehensive guidelines and establish permitted levels of RF energy for the general population. The guidelines are based on safety standards that were developed by independent scientific organizations through periodic and thorough evaluation of scientific studies. The standards include a substantial safety margin designed to assure the safety of all persons, regardless of age and health.

The exposure standard for wireless mobile phones employs a unit of measurement known as the Specific Absorption Rate (SAR). The SAR limit set by the FCC is 1.6 W/kg. SAR Tests are conducted using standard operating positions accepted by the FCC with the phone transmitting at its highest certified power level in all tested frequency bands. Although the SAR is determined at the highest certified power level, the actual SAR level of the phone

while operating can be well below the maximum value. This is because the phone is designed to operate at multiple power levels so as to use only the power required to reach the network. In general, the closer you are to a wireless base station antenna, the lower the power output.

Before a new model phone is available for sale to the public, it must be tested and certified to the FCC that it does not exceed the exposure limit established by the FCC. Tests for each model phone are performed in positions and locations (e.g. at the ear and worn on the body) as required by the FCC.

The highest SAR values for this model phone as reported to the FCC are

Head: 1.39 W/Kg, Body-worn: 0.868 W/Kg.

For body worn operation, this model phone has been tested and meets the FCC RF exposure guidelines when used with a Samsung accessory designated for this product or when used with an accessory that contains no metal and that positions the handset a minimum of 1.5 cm from the body. Non-compliance with the above restrictions may result in violation of FCC RF exposure guidelines.

The FCC has granted an Equipment Authorization for this model phone with all reported SAR levels evaluated as in compliance with the FCC RF exposure guidelines. SAR information on this model phone is on file with the FCC and can be found under the Display Grant section of <http://www.fcc.gov/oet/fccid> after searching on FCC ID A3LSCHL160.

---

In the United States and Canada, the SAR limit for mobile phones used by the public is 1.6 watts/kilogram (W/kg) averaged over one gram of tissue. The standard incorporates a substantial margin of safety to give additional protection for the public and to account for any variations in measurements.

## **Appendix B: Guide to safe and responsible wireless phone use**

Cellular Telecommunications & Internet Association  
"Safety is the most important call you will ever make."

### **A guide to safe and responsible wireless phone use**

TENS OF MILLIONS OF PEOPLE IN THE U.S. TODAY TAKE ADVANTAGE OF THE UNIQUE COMBINATION OF CONVENIENCE, SAFETY AND VALUE DELIVERED BY THE WIRELESS TELEPHONE. QUITE SIMPLY, THE WIRELESS PHONE GIVES PEOPLE THE POWERFUL ABILITY TO COMMUNICATE BY VOICE-ALMOST ANYWHERE, ANYTIME-WITH THE BOSS, WITH A CLIENT, WITH THE KIDS, WITH EMERGENCY PERSONNEL OR EVEN WITH THE POLICE. EACH YEAR, AMERICANS MAKE BILLIONS OF CALLS FROM THEIR WIRELESS PHONES, AND THE NUMBERS ARE RAPIDLY GROWING.

But an important responsibility accompanies those benefits, one that every wireless phone user must uphold. When driving a car, driving is your first responsibility. A wireless phone can be an invaluable tool, but good

judgment must be exercised at all times while driving a motor vehicle whether on the phone or not.

The basic lessons are ones we all learned as teenagers. Driving requires alertness, caution and courtesy. It requires a heavy dose of basic common sense-keep your head up, keep your eyes on the road, check your mirrors frequently and watch out for other drivers. It requires obeying all traffic signs and signals and staying within the speed limit. It means using seat belts and requiring other passengers to do the same.

But with wireless phone use, driving safely means a little more. This brochure is a call to wireless phone users everywhere to make safety their first priority when behind the wheel of a car. Wireless telecommunications is keeping us in touch, simplifying our lives, protecting us in emergencies and providing opportunities to help others in need. When it comes to the use of wireless phones, safety is your most important call.

## Wireless phone “Safety Tips”

Below are safety tips to follow while driving and using a wireless phone which should be easy to remember:

Get to know your wireless phone and its features such as speed dial and redial. Carefully read your instruction manual and learn to take advantage of valuable features most phones offer, including automatic redial and memory. Also, work to memorize the phone keypad so you can use the speed dial function without taking your attention off the road.

When available, use a hands free device. A number of hands free wireless phone accessories are readily available today. Whether you choose an installed mounted device for your wireless phone or a speaker phone accessory, take advantage of these devices if available to you.

Position your wireless phone within easy reach. Make sure you place your wireless phone within easy reach and where you can grab it without removing your eyes from the road. If you get an incoming call at an inconvenient time, if possible, let your voice mail answer it for you.

Suspend conversations during hazardous driving conditions or situations. Let the person you are speaking

with know you are driving; if necessary, suspend the call in heavy traffic or hazardous weather conditions. Rain, sleet, snow and ice can be hazardous, but so is heavy traffic. As a driver, your first responsibility is to pay attention to the road.

Do not take notes or look up phone numbers while driving. If you are reading an address book or business card, or writing a “to do” list while driving a car, you are not watching where you are going. It’s common sense. Don’t get caught in a dangerous situation because you are reading or writing and not paying attention to the road or nearby vehicles.

Dial sensibly and assess the traffic; if possible, place calls when you are not moving or before pulling into traffic. Try to plan your calls before you begin your trip or attempt to coincide your calls with times you may be stopped at a stop sign, red light or otherwise stationary. But if you need to dial while driving, follow this simple tip-dial only a few numbers, check the road and your mirrors, then continue.

Do not engage in stressful or emotional conversations that may be distracting. Stressful or emotional conversations and driving do not mix-they are distracting and even dangerous when you are behind the wheel of a car. Make

## *Health and safety information*

people you are talking with aware you are driving and if necessary, suspend conversations which have the potential to divert your attention from the road.

Use your wireless phone to call for help. Your wireless phone is one of the greatest tools you can own to protect yourself and your family in dangerous situations-with your phone at your side, help is only three numbers away. Dial 9-1-1 or other local emergency number in the case of fire, traffic accident, road hazard or medical emergency. Remember, it is a free call on your wireless phone!

Use your wireless phone to help others in emergencies. Your wireless phone provides you a perfect opportunity to be a "Good Samaritan" in your community. If you see an auto accident, crime in progress or other serious emergency where lives are in danger, call 9-1-1 or other local emergency number, as you would want others to do for you.

Call roadside assistance or a special wireless non emergency assistance number when necessary. Certain situations you encounter while driving may require attention, but are not urgent enough to merit a call for emergency services. But you still can use your wireless phone to lend a hand. If you see a broken-down vehicle posing no serious hazard, a broken traffic signal, a minor

traffic accident where no one appears injured or a vehicle you know to be stolen, call roadside assistance or other special non-emergency wireless number.

Careless, distracted individuals and people driving irresponsibly represent a hazard to everyone on the road. Since 1984, the Cellular Telecommunications Industry Association and the wireless industry have conducted educational outreach to inform wireless phone users of their responsibilities as safe drivers and good citizens. As we approach a new century, more and more of us will take advantage of the benefits of wireless telephones. And, as we take to the roads, we all have a responsibility to drive safely.

"The wireless industry reminds you to use your phone safely when driving."

Cellular Telecommunications & Internet Association For more information, please call 1-888-901-SAFE.

For updates: <http://www.wow-com.com/consumer/issues/driving/articles.cfm?ID =85>

## **Appendix C: consumer update on wireless phones**

U.S. Food and Drug Administration

What kinds of phones are the subject of this update?

The term wireless phone refers here to hand-held wireless phones with built-in antennas, often called cell, mobile, or PCS phones. These types of wireless phones can expose the user to measurable radio frequency energy (RF) because of the short distance between the phone and the user's head. These RF exposures are limited by Federal Communications Commission safety guidelines that were developed with the advice of FDA and other federal health and safety agencies. When the phone is located at greater distances from the user, the exposure to RF is drastically lower because a person's RF exposure decreases rapidly with increasing distance from the source. The so-called "cordless phones," which have a base unit connected to the telephone wiring in a house, typically operate at far lower power levels, and thus produce RF exposures well within the FCC's compliance limits.

Do wireless phones pose a health hazard?

The available scientific evidence does not show that any health problems are associated with using wireless

phones. There is no proof, however, that wireless phones are absolutely safe. Wireless phones emit low levels of radio frequency energy (RF) in the microwave range while being used. They also emit very low levels of RF when in the stand-by mode. Whereas high levels of RF can produce health effects (by heating tissue), exposure to low level RF that does not produce heating effects causes no known adverse health effects. Many studies of low level RF exposures have not found any biological effects. Some studies have suggested that some biological effects may occur, but such findings have not been confirmed by additional research. In some cases, other researchers have had difficulty in reproducing those studies, or in determining the reasons for inconsistent results.

What is FDA's role concerning the safety of wireless phones?

Under the law, FDA does not review the safety of radiation emitting consumer products such as wireless phones before they can be sold, as it does with new drugs or medical devices. However, the agency has authority to take action if wireless phones are shown to emit radio frequency energy (RF) at a level that is hazardous to the user. In such a case, FDA could require the manufacturers of wireless phones to notify users of the health hazard and

to repair, replace or recall the phones so that the hazard no longer exists.

Although the existing scientific data do not justify FDA regulatory actions, FDA has urged the wireless phone industry to take a number of steps, including the following:

Support needed research into possible biological effects of RF of the type emitted by wireless phones;

Design wireless phones in a way that minimizes any RF exposure to the user that is not necessary for device function; and

Cooperate in providing users of wireless phones with the best possible information on possible effects of wireless phone use on human health

FDA belongs to an interagency working group of the federal agencies that have responsibility for different aspects of RF safety to ensure coordinated efforts at the federal level. The following agencies belong to this working group:

National Institute for Occupational Safety and Health  
Environmental Protection Agency  
Federal Communications Commission

Occupational Safety and Health Administration  
National Telecommunications and Information Administration

The National Institutes of Health participates in some interagency working group activities, as well.

FDA shares regulatory responsibilities for wireless phones with the Federal Communications Commission (FCC). All phones that are sold in the United States must comply with FCC safety guidelines that limit RF exposure. FCC relies on FDA and other health agencies for safety questions about wireless phones.

FCC also regulates the base stations that the wireless phone networks rely upon. While these base stations operate at higher power than do the wireless phones themselves, the RF exposures that people get from these base stations are typically thousands of times lower than those they can get from wireless phones. Base stations are thus not the primary subject of the safety questions discussed in this document.

What is FDA doing to find out more about the possible health effects of wireless phone RF?



FDA is working with the U.S. National Toxicology Program and with groups of investigators around the world to ensure that high priority animal studies are conducted to address important questions about the effects of exposure to radio frequency energy (RF).

FDA has been a leading participant in the World Health Organization International Electromagnetic Fields (EMF) Project since its inception in 1996. An influential result of this work has been the development of a detailed agenda of research needs that has driven the establishment of new research programs around the world. The Project has also helped develop a series of public information documents on EMF issues.

FDA and the Cellular Telecommunications & Internet Association (CTIA) have a formal Cooperative Research and Development Agreement (CRADA) to do research on wireless phone safety. FDA provides the scientific oversight, obtaining input from experts in government, industry, and academic organizations. CTIA-funded research is conducted through contracts to independent investigators. The initial research will include both laboratory studies and studies of wireless phone users. The CRADA will also include a broad assessment of

additional research needs in the context of the latest research developments around the world.

What steps can I take to reduce my exposure to radio frequency energy from my wireless phone?

If there is a risk from these products—and at this point we do not know that there is—it is probably very small. But if you are concerned about avoiding even potential risks, you can take a few simple steps to minimize your exposure to radio frequency energy (RF). Since time is a key factor in how much exposure a person receives, reducing the amount of time spent using a wireless phone will reduce RF exposure.

If you must conduct extended conversations by wireless phone every day, you could place more distance between your body and the source of the RF, since the exposure level drops off dramatically with distance. For example, you could use a headset and carry the wireless phone away from your body or use a wireless phone connected to a remote antenna

Again, the scientific data do not demonstrate that wireless phones are harmful. But if you are concerned about the RF exposure from these products, you can use measures like

those described above to reduce your RF exposure from wireless phone use.

What about children using wireless phones?

The scientific evidence does not show a danger to users of wireless phones, including children and teenagers. If you want to take steps to lower exposure to radio frequency energy (RF), the measures described above would apply to children and teenagers using wireless phones. Reducing the time of wireless phone use and increasing the distance between the user and the RF source will reduce RF exposure.

Some groups sponsored by other national governments have advised that children be discouraged from using wireless phones at all. For example, the government in the United Kingdom distributed leaflets containing such a recommendation in December 2000. They noted that no evidence exists that using a wireless phone causes brain tumors or other ill effects. Their recommendation to limit wireless phone use by children was strictly precautionary; it was not based on scientific evidence that any health hazard exists.

Do hands-free kits for wireless phones reduce risks from exposure to RF emissions?

Since there are no known risks from exposure to RF emissions from wireless phones, there is no reason to believe that hands-free kits reduce risks. Hands-free kits can be used with wireless phones for convenience and comfort. These systems reduce the absorption of RF energy in the head because the phone, which is the source of the RF emissions, will not be placed against the head. On the other hand, if the phone is mounted against the waist or other part of the body during use, then that part of the body will absorb more RF energy. Wireless phones marketed in the U.S. are required to meet safety requirements regardless of whether they are used against the head or against the body. Either configuration should result in compliance with the safety limit.

Do wireless phone accessories that claim to shield the head from RF radiation work?

Since there are no known risks from exposure to RF emissions from wireless phones, there is no reason to believe that accessories that claim to shield the head from those emissions reduce risks. Some products that claim to shield the user from RF absorption use special phone cases, while others involve nothing more than a metallic accessory attached to the phone. Studies have shown that these products generally do not work as advertised. Unlike

“hand-free” kits, these so-called “shields” may interfere with proper operation of the phone. The phone may be forced to boost its power to compensate, leading to an increase in RF absorption. In February 2002, the Federal Trade Commission (FTC) charged two companies that sold devices that claimed to protect wireless phone users from radiation with making false and unsubstantiated claims. According to FTC, these defendants lacked a reasonable basis to substantiate their claim.

What about wireless phone interference with medical equipment?

Radio frequency energy (RF) from wireless phones can interact with some electronic devices. For this reason, FDA helped develop a detailed test method to measure electromagnetic interference (EMI) of implanted cardiac pacemakers and defibrillators from wireless telephones. This test method is now part of a standard sponsored by the Association for the Advancement of Medical Instrumentation (AAMI). The final draft, a joint effort by FDA, medical device manufacturers, and many other groups, was completed in late 2000. This standard will allow manufacturers to ensure that cardiac pacemakers and defibrillators are safe from wireless phone EMI.

FDA has tested hearing aids for interference from handheld wireless phones and helped develop a voluntary standard sponsored by the Institute of Electrical and Electronic Engineers (IEEE). This standard specifies test methods and performance requirements for hearing aids and wireless phones so that no interference occurs when a person uses a compatible phone and a compatible hearing aid at the same time. This standard was approved by the IEEE in 2000.

FDA continues to monitor the use of wireless phones for possible interactions with other medical devices. Should harmful interference be found to occur, FDA will conduct testing to assess the interference and work to resolve the problem.

What are the results of the research done already?

The research done thus far has produced conflicting results, and many studies have suffered from flaws in their research methods. Animal experiments investigating the effects of radio frequency energy (RF) exposures characteristic of wireless phones have yielded conflicting results that often cannot be repeated in other laboratories. A few animal studies, however, have suggested that low levels of RF could accelerate the development of cancer in laboratory animals. However, many of the studies that

showed increased tumor development used animals that had been genetically engineered or treated with cancer causing chemicals so as to be pre-disposed to develop cancer in the absence of RF exposure. Other studies exposed the animals to RF for up to 22 hours per day. These conditions are not similar to the conditions under which people use wireless phones, so we don't know with certainty what the results of such studies mean for human health.

Three large epidemiology studies have been published since December 2000. Between them, the studies investigated any possible association between the use of wireless phones and primary brain cancer, glioma, meningioma, or acoustic neuroma, tumors of the brain or salivary gland, leukemia, or other cancers. None of the studies demonstrated the existence of any harmful health effects from wireless phone RF exposures. However, none of the studies can answer questions about long-term exposures, since the average period of phone use in these studies was around three years.

What research is needed to decide whether RF exposure from wireless phones poses a health risk?

A combination of laboratory studies and epidemiological studies of people actually using wireless phones would provide some of the data that are needed. Lifetime animal exposure studies could be completed in a few years. However, very large numbers of animals would be needed to provide reliable proof of a cancer promoting effect if one exists. Epidemiological studies can provide data that is directly applicable to human populations, but 10 or more years follow-up may be needed to provide answers about some health effects, such as cancer. This is because the interval between the time of exposure to a cancer-causing agent and the time tumors develop - if they do - may be many, many years. The interpretation of epidemiological studies is hampered by difficulties in measuring actual RF exposure during day-to-day use of wireless phones. Many factors affect this measurement, such as the angle at which the phone is held, or which model of phone is used.

Which other federal agencies have responsibilities related to potential RF health effects?

Additional information on the safety of RF exposures from various sources can be obtained from the following organizations.

FCC RF Safety Program:

<http://www.fcc.gov/oet/rfsafety/>

Environmental Protection Agency (EPA):

<http://www.epa.gov/radiation/>

Occupational Safety and Health Administration's (OSHA):

<http://www.osha-slc.gov/SLTC/radiofrequencyradiation/index.html>

National Institute for Occupational Safety and Health (NIOSH):

<http://www.cdc.gov/niosh/emfpg.html>

World Health Organization (WHO):

<http://www.who.int/peh-emf/>

International Commission on Non-Ionizing Radiation Protection:

<http://www.icnirp.de>

National Radiation Protection Board (UK):

<http://www.nrpb.org.uk>

---

Updated 4/3/2002: US Food and Drug Administration

<http://www.fda.gov/cellphones>

## STANDARD LIMITED WARRANTY

**What is Covered and For How Long?** SAMSUNG TELECOMMUNICATIONS AMERICA, L.P. (SAMSUNG) warrants to the original purchaser ("Purchaser") that SAMSUNG's Phones and accessories ("Products") are free from defects in material and workmanship under normal use and service for the period commencing upon the date of purchase and continuing for the following specified period of time after that date:

Phone 1 Year

Batteries 1 Year

Leather Case/Pouch 90 Days

Other Phone Accessories 1 Year

**What is Not Covered?** This Limited Warranty is conditioned upon proper use of Product by Purchaser. This Limited Warranty does not cover: (a) defects or damage resulting from accident, misuse, abuse, neglect, unusual physical, electrical or electromechanical stress, or modification of any part of Product, including antenna, or cosmetic damage; (b) equipment that has the serial number removed or made illegible; (c) any plastic surfaces or other

externally exposed parts that are scratched or damaged due to normal use; (d) malfunctions resulting from the use of Product in conjunction with accessories, products, or ancillary/peripheral equipment not furnished or approved by SAMSUNG; (e) defects or damage from improper testing, operation, maintenance, installation, or adjustment; (f) installation, maintenance, and service of Product, or (g) Product used or purchased outside the United States or Canada.

This Limited Warranty covers batteries only if battery capacity falls below 80% of rated capacity or the battery leaks, and this Limited Warranty does not cover any battery if (i) the battery has been charged by a battery charger not specified or approved by SAMSUNG for charging the battery, (ii) any of the seals on the battery are broken or show evidence of tampering, or (iii) the battery has been used in equipment other than the SAMSUNG phone for which it is specified.

**What are SAMSUNG's Obligations?** During the applicable warranty period, SAMSUNG will repair or replace, at SAMSUNG's sole option, without charge to

Purchaser, any defective component part of Product. To obtain service under this Limited Warranty, Purchaser must return Product to an authorized phone service facility in an adequate container for shipping, accompanied by Purchaser's sales receipt or comparable substitute proof of sale showing the date of purchase, the serial number of Product and the sellers' name and address. To obtain assistance on where to deliver the Product, call Samsung Customer Care at 1-888-987-4357. Upon receipt, SAMSUNG will promptly repair or replace the defective Product. SAMSUNG may, at SAMSUNG's sole option, use rebuilt, reconditioned, or new parts or components when repairing any Product or replace Product with a rebuilt, reconditioned or new Product. Repaired/replaced leather cases and pouches will be warranted for a period of ninety (90) days. All other repaired/replaced Product will be warranted for a period equal to the remainder of the original Limited Warranty on the original Product or for 90 days, whichever is longer. All replaced parts, components, boards and equipment shall become the property of SAMSUNG. If SAMSUNG determines that any Product is not covered by this Limited Warranty, Purchaser must pay

all parts, shipping, and labor charges for the repair or return of such Product.

**What Are the Limits On SAMSUNG's Liability?**

EXCEPT AS SET FORTH IN THE EXPRESS WARRANTY CONTAINED HEREIN, PURCHASER TAKES THE PRODUCT "AS IS," AND SAMSUNG MAKES NO WARRANTY OR REPRESENTATION AND THERE ARE NO CONDITIONS, EXPRESS OR IMPLIED, STATUTORY OR OTHERWISE, OF ANY KIND WHATSOEVER WITH RESPECT TO THE PRODUCT, INCLUDING BUT NOT LIMITED TO:

- THE MERCHANTABILITY OF THE PRODUCT OR ITS FITNESS FOR ANY PARTICULAR PURPOSE OR USE;
- WARRANTIES OF TITLE OR NON-INFRINGEMENT;
- DESIGN, CONDITION, QUALITY, OR PERFORMANCE OF THE PRODUCT;
- THE WORKMANSHIP OF THE PRODUCT OR THE COMPONENTS CONTAINED THEREIN; OR
- COMPLIANCE OF THE PRODUCT WITH THE REQUIREMENTS OF ANY LAW, RULE, SPECIFICATION OR CONTRACT PERTAINING THERETO.

NOTHING CONTAINED IN THE INSTRUCTION MANUAL SHALL BE CONSTRUED TO CREATE AN EXPRESS WARRANTY OF ANY KIND WHATSOEVER WITH RESPECT TO THE PRODUCT. ALL IMPLIED WARRANTIES AND CONDITIONS THAT MAY ARISE BY OPERATION OF LAW, INCLUDING IF APPLICABLE THE IMPLIED WARRANTIES OF MERCHANTABILITY AND FITNESS FOR A PARTICULAR PURPOSE, ARE HEREBY LIMITED TO THE SAME DURATION OF TIME AS THE EXPRESS WRITTEN WARRANTY STATED HEREIN. SOME STATES/PROVINCES DO NOT ALLOW LIMITATIONS ON HOW LONG AN IMPLIED WARRANTY LASTS, SO THE ABOVE LIMITATION MAY NOT APPLY TO YOU. IN ADDITION, SAMSUNG SHALL NOT BE LIABLE FOR ANY DAMAGES OF ANY KIND RESULTING FROM THE PURCHASE, USE, OR MISUSE OF, OR INABILITY TO USE THE PRODUCT OR ARISING DIRECTLY OR INDIRECTLY FROM THE USE OR LOSS OF USE OF THE PRODUCT OR FROM THE BREACH OF THE EXPRESS WARRANTY, INCLUDING INCIDENTAL, SPECIAL, CONSEQUENTIAL OR SIMILAR DAMAGES, OR LOSS OF ANTICIPATED PROFITS OR BENEFITS, OR FOR DAMAGES ARISING FROM ANY TORT (INCLUDING NEGLIGENCE OR GROSS NEGLIGENCE) OR FAULT COMMITTED BY SAMSUNG, ITS AGENTS OR

EMPLOYEES, OR FOR ANY BREACH OF CONTRACT OR FOR ANY CLAIM BROUGHT AGAINST PURCHASER BY ANY OTHER PARTY. SOME STATES/PROVINCES DO NOT ALLOW THE EXCLUSION OR LIMITATION OF INCIDENTAL OR CONSEQUENTIAL DAMAGES, SO THE ABOVE LIMITATION OR EXCLUSION MAY NOT APPLY TO YOU.

THIS WARRANTY GIVES YOU SPECIFIC LEGAL RIGHTS, AND YOU MAY ALSO HAVE OTHER RIGHTS, WHICH VARY FROM STATE TO STATE/PROVINCE TO PROVINCE. THIS LIMITED WARRANTY SHALL NOT EXTEND TO ANYONE OTHER THAN THE ORIGINAL PURCHASER OF THIS PRODUCT AND STATES PURCHASER'S EXCLUSIVE REMEDY. IF ANY PORTION OF THIS LIMITED WARRANTY IS HELD ILLEGAL OR UNENFORCEABLE BY REASON OF ANY LAW, SUCH PARTIAL ILLEGALITY OR UNENFORCEABILITY SHALL NOT AFFECT THE ENFORCEABILITY FOR THE REMAINDER OF THIS LIMITED WARRANTY WHICH PURCHASER ACKNOWLEDGES IS AND WILL ALWAYS BE CONSTRUED TO BE LIMITED BY ITS TERMS OR AS LIMITED AS THE LAW PERMITS.

THE PARTIES UNDERSTAND THAT THE PURCHASER MAY USE THIRD-PARTY SOFTWARE OR EQUIPMENT IN

CONJUNCTION WITH THE PRODUCT. SAMSUNG MAKES NO WARRANTIES OR REPRESENTATIONS AND THERE ARE NO CONDITIONS, EXPRESS OR IMPLIED, STATUTORY OR OTHERWISE, AS TO THE QUALITY, CAPABILITIES, OPERATIONS, PERFORMANCE OR SUITABILITY OF ANY THIRD-PARTY SOFTWARE OR EQUIPMENT, WHETHER SUCH THIRD-PARTY SOFTWARE OR EQUIPMENT IS INCLUDED WITH THE PRODUCT DISTRIBUTED BY SAMSUNG OR OTHERWISE, INCLUDING THE ABILITY TO INTEGRATE ANY SUCH SOFTWARE OR EQUIPMENT WITH THE PRODUCT.

THE QUALITY, CAPABILITIES, OPERATIONS, PERFORMANCE AND SUITABILITY OF ANY SUCH THIRD-PARTY SOFTWARE OR EQUIPMENT LIE SOLELY WITH THE PURCHASER AND THE DIRECT VENDOR, OWNER OR SUPPLIER OF SUCH THIRD-PARTY SOFTWARE OR EQUIPMENT, AS THE CASE MAY BE.

This Limited Warranty allocates risk of Product failure between Purchaser and SAMSUNG, and SAMSUNG's Product pricing reflects this allocation of risk and the limitations of liability contained in this Limited Warranty. The agents, employees, distributors, and dealers of SAMSUNG are not authorized to make modifications to this Limited Warranty, or make



additional warranties binding on SAMSUNG.  
Accordingly, additional statements such as dealer advertising or presentation, whether oral or written, do not constitute warranties by SAMSUNG and should not be relied upon.

Samsung Telecommunications America (STA), Inc.  
1301 East Lookout Drive  
Richardson, TX 75082  
Phone: 1-800-SAMSUNG  
Phone: 1-888-987-HELP (4357)

©2005 Samsung Telecommunications America. All rights reserved.

No reproduction in whole or in part allowed without prior written approval.

Specifications and availability subject to change without notice. [080802]