



<http://www.samsunghdd.co.kr>

BF68-00152B
2002.05. Rev.00



HANDY Q

Samsung External Hard Drive User Manual

SEV04UP
SEV08UP



* Samsung is not responsible for loss of data.
Please back up data frequently.

What is a **HANDY Q**?

- ◆ **HANDY Q** is the name of a new high-performance external hard drive by Samsung. It supports both the high-speed IEEE 1394 interface and the high-speed USB 2.0 interface. Unlike the existing desktop hard drives, **HANDY Q** gives your system large storage space instantly without the need to open up the computer.
- With the formatting and partitioning already done, you can use the large storage space instantly upon connecting Samsung **HANDY Q** to the USB or 1394 port on your computer without rebooting the system.
- ◆ **HANDY Q** supports both USB 1.1 and 2.0. The USB 2.0 connection is up to 40 times faster compared to the USB 1.1 connection.
- ◆ **HANDY Q** automatically detects the connected port. When the drive is connected through the USB port, data is transferred in USB mode, and when connected through the 1394 port, it is transferred in 1394 mode.

Contents

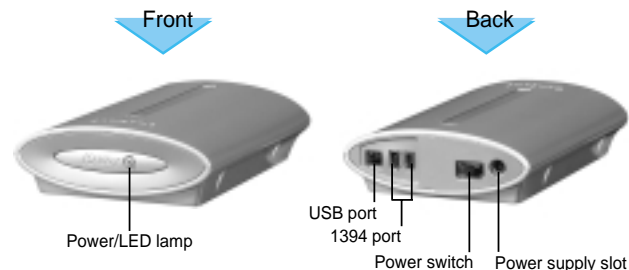
Safety Precautions	1
Identifying the Parts and Checking the Package Kits	2
System Requirements	
Windows PC	3
Macintosh	4
Installing the Hardware	
For USB-Port Installation	5
For 1394-Port Installation	6
Turning Handy Q Power ON & OFF	
Turning Power OFF.....	7
Turning Power ON	9
Installing the Software	
Installing USB 2.0/1.1. Driver	
• Windows 98 Second Edition (Initial Installation)	11
• Windows ME/2000/XP	13
• Mac OS 8.x ~ 9.x	14
- Installing the Device Driver	14
• Mac OS X	15
Installing the IEEE 1394 Driver	
• Windows 98SE/2000 Professional/ME/XP	16
• Initial Use of HANDY Q in Mac OS X	17
• Macintosh	20
- OS 8.6 ~ 9.0	20
- OS 9.1 or higher	20
Troubleshooting Guide	21
Product Specifications	22

Safety Precautions

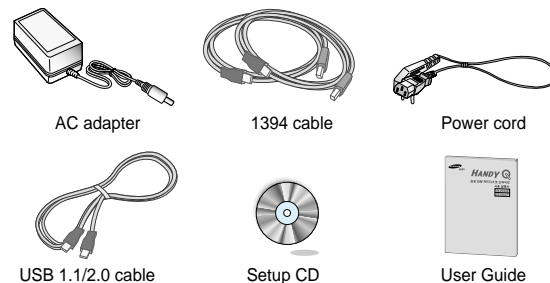
Carefully follow all instructions below to prevent loss of data or damage to your Handy Q drive.

- ◆ This product is precision equipment and, the HDD inside is extremely susceptible to shock and static electricity.
- ◆ Avoid high-temperature, high-humidity storage.
- ◆ Make sure you save the data before turning the power off or pulling the plug out.
- ◆ The manufacturer does not guarantee the safety of data that is not saved on the hard disc.
- ◆ The manufacturer's guarantee does not apply to problems due to user's failure to follow instructions in the User's Manual.
- ◆ Frequently check for viruses and take necessary precautions to prevent infection.
- ◆ Loss or damage to the parts including the stickers and product labels can cause immediate malfunction.
Take necessary precautions to keep all the parts intact.
- ◆ Make sure you back up all important data files.
- ◆ Do not remove the cable or turn the power off while the system is running.

Identifying the Parts and Checking the Package Contents



Package Contents



System Requirements

The following are the minimum system requirements to install and run Handy Q.

Windows PC

- ◆ IEEE 1394
 - CPU: Pentium or faster
 - RAM: Minimum 32MB
 - Windows 98SE, Windows ME, Windows 2000, Windows XP
(Handy Q does not support Windows 95, Windows 98, and Windows NT)
 - One or more IEEE 1394 ports
 - Or, an IEEE 1394-compatible PCI card or PCMCIA card (for notebook computers).
- ◆ USB 2.0 / 1.1
 - CPU: Pentium or faster
 - RAM: Minimum 32MB
 - Windows 98SE, Windows ME, Windows 2000, Windows XP
(Handy Q does not support Windows 95, Windows 98, and Windows NT)
 - One or more IEEE 1394 ports
 - Or, an IEEE 1394-compatible PCI card or PCMCIA card (for notebook computers).

Note: When connected through the USB 1.1 port, the computer uses the USB connection.

Macintosh

- ◆ FireWire (IEEE 1394)
 - Power PC (iMAC DV, G3, or later) with a FireWire-mounted board
 - Mac OS 8.6 or higher
 - RAM: Minimum 32MB
 - Internet connection
- ◆ USB 1.1
 - Macintosh Power PC with a USB-1.1 port
 - RAM: Minimum 32MB
 - Internet connection

Note: Apple computers currently do not support USB 2.0.

Installing the Hardware

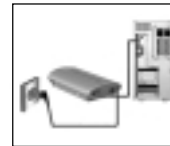
For USB-port Installation

- 1 Make sure your computer meets the system requirements.
See Pages 3 & 4 for System Requirements.
- 2 Connect the AC adaptor to the power supply slot on the back of Handy Q as shown in the picture.
- 3 Connect the power cord to the AC adaptor as shown in the picture.
- 4 Turn the power on using the power switch on the back of Handy Q.
- 5 Connect the USB data cable to the USB port on Handy Q as shown in the picture.
- 6 Connect the USB data cable to the USB port of the USB PCI card, which is connected to the computer.



For 1394-Port Installation

- 1 Make sure your computer meets the system requirements.
See Pages 3 & 4 for System Requirements.
- 2 Connect the AC adaptor to the power supply slot on the back of Handy Q as shown in the picture.
- 3 Connect the power cord to the AC adaptor as shown in the picture.
- 4 Turn the power on using the power switch on the back of Handy Q.
- 5 Connect the 1394 data cable to the 1394 port on Handy Q as shown in the picture.
- 6 Connect the 1394 data cable to the 1394 port of the 1394 PCI card, which is connected to the computer.



Turning Handy Q Power ON & OFF

Turning Power OFF

◆ Windows

- For IEEE 1394

- 1 Click the Eject Hardware/IEEE 1394 Storage Device icon(🗑️) on the right-hand corner of the taskbar, and the following small message box appears above the taskbar.

Stop SAMSUNG HANDY Q IEEE 1394 SBP2 Device - Drive(E:)

- 2 Click the message box to make it disappear and the next dialogue box to appear.



- 3 Click OK, and you can safely remove the device from the system.

- For USB

- 1 Click the Eject Hardware/USB Storage Device icon(🗑️) on the right-hand corner of the taskbar, and the following small message box appears above the taskbar.

Stop USB Mass Storage Device - Drive(E:)

- 2 Click the message box to make it disappear and the next dialogue box to appear.



- 3 Click OK, and you can safely remove the device from the system.

◆ Macintosh

- 1 Drag the Handy Q disc icon(📀
HANDY_Q) to the trashcan.

- 2 You can now safely remove Handy Q from your computer.

Turning Power On

◆ Reconnecting

If the power is off, turn Handy Q on before connecting the data cable to your computer.

Installing the Software

Before you start using Handy Q, you need to install a USB/1394 driver compatible with your system.

◆ USB 2.0 / 1.1

- Windows 98 Second Edition (Initial Installation)Page 11
- Windows ME/ 2000 / XPPage 13
- Mac OS 8.x ~ 9.xPage 14
- Mac OS XPage 15

◆ IEEE 1394

- Windows 98SE / 2000 Professional / ME / XPPage 16
- Initial Use of HANDY Q in Mac OS XPage 17
- MacintoshPage 20

Note: Close all programs before installation, and refer to the Troubleshooting Checklist when you install or encounter problems.

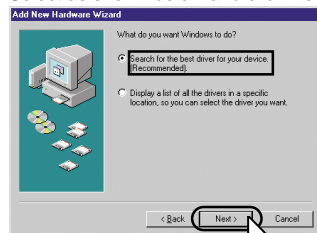
Installing the USB 2.0/1.1 Driver

Windows 98 Second Edition (Initial Installation)

- 1 Make sure Handy Q is connected to your computer, and turn the power on. A dialogue box as shown below appears and starts to look for a driver for the device. Click Next.



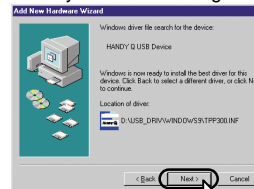
- 2 A dialogue box appears as shown below. Select as shown below and click Next.



- 3 Choose "Specify a location" option and select the USB_Driver/Windows98SE folder from the CD-ROM drive using the Browse button. Click Next.



- 4 When you see the dialogue box as shown below, click Next.



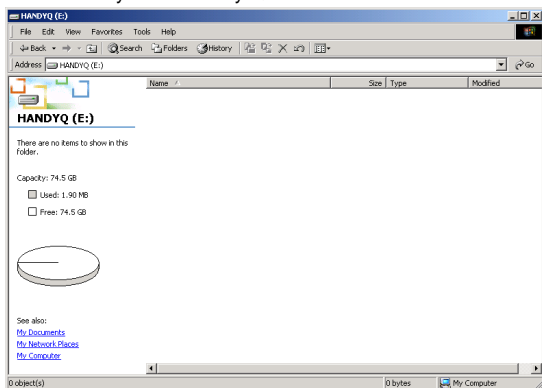
- 5 A new dialogue box appears as shown below when the installation is completed. Click Finish.



- 6 Now you are ready to use Handy Q.

Windows ME/2000/XP

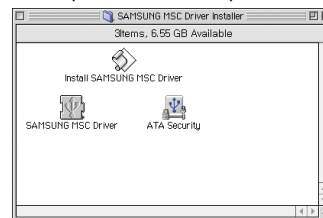
- 1 Make sure Handy Q is connected to your computer, and turn the power on.
- 2 A drive named Handy Q appears in your Windows Explorer window.
- 3 You are ready to use Handy Q.



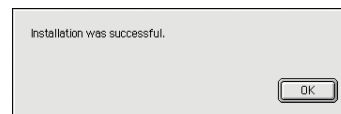
Mac OS 8.x ~ 9.x


◆ Installing the Device Driver

- 1 In the setup CD, find a file named HANDYQ.hqx from the MAC folder in the USB Driver folder.
- 2 Decompress HANDYQ.hqx and the files appear as shown below.




- 3 Double-click the file named SAMSUNG MSC Driver.
A device driver is installed and the following dialogue box appears.



- 4 Click OK and an icon () appears.
You are now ready to use Handy Q.


Mac OS X

- ◆ Connect Handy Q to your computer and turn the power on. An icon() appears on the screen. Now you are ready to use Handy Q in Mac OS X using the USB connection.

Installing the IEEE 1394 Driver

Windows 98SE/2000 Professional/ME/XP

- 1 Turn your computer on and connect Handy Q to your computer using the IEEE1394 port.
When 'Insert Disk' appears on your screen, insert the Windows98 SE CD-ROM into your CD-ROM drive, and click OK. The driver is automatically installed.

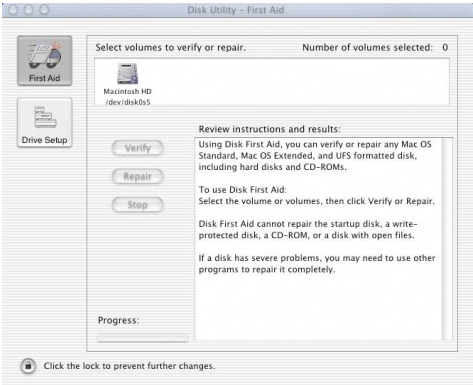
Note: Installation may begin immediately without prompting for disc insertion.
- 2 If your computer does not detect Handy Q, or you don't see the 1394 icon() on your Windows taskbar, update your Windows program as below;
 - Click Start on the left-hand corner of the taskbar.
 - Click Windows Update.
 - Click Product Updates.
 - Download and install the latest version of Windows.

Initial Use of HANDY Q in Mac OS X

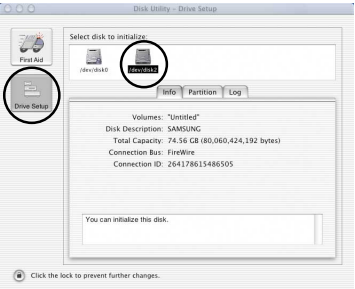
- 1 When you first connect Handy Q to your computer, a dialogue box appears as below. Click Initialize.



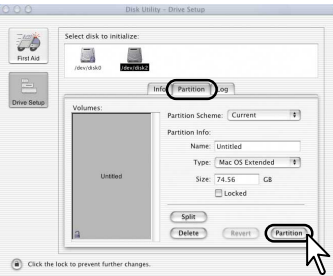
- 2 The Disk Utility window appears.



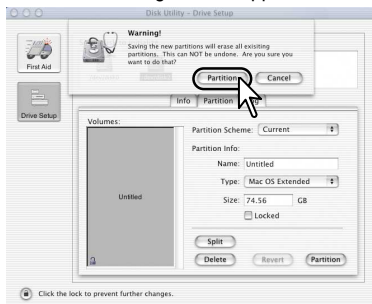
- 3 Click the Drive Setup button on the left-hand side of the window. Choose /dev/disk1.



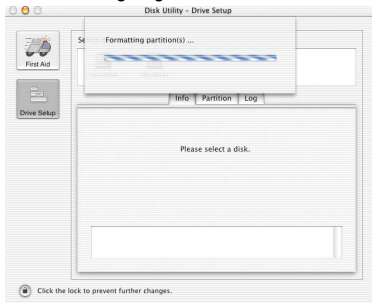
- 4 Of the three menu tabs showing, choose "Partition". Click Initialize.




5 When the following window appears, click Initialize.




6 The formatting begins as below.



7 When formatting is completed, an icon () appears on the desktop. You are now ready to use Handy Q using the 1394 connection.


Macintosh

- OS 8.6 ~ 9.0

Connect to the Macintosh Homepage to download the FireWire Enabler and install it on your computer. Reboot your computer after the installation is completed. A new icon () appears on the desktop.

- OS 9.1 or higher

No need for installation.

Connect Handy Q to your computer and turn the power on. An icon () appears on the desktop.

Troubleshooting Guide

When you encounter problems using Handy Q, refer to the followings.

◆ Basic Checklists

- Make sure your power cord, USB cable, or the 1394 cable is connected properly.
- Make sure the Handy Q is on before connecting to the computer.

◆ Problems Encountered While Using the USB Connection

- Windows NT OS does not support Handy Q's USB interface.
- Make sure your computer supports USB1.1.
Handy Q is not compatible with USB 1.0.
- If the connection fails, try connecting to other USB ports.
- Make sure you installed the USB driver provided by Samsung.
Note : See "Installing the Software" for driver installation.

◆ Problems Encountered While Using the 1394 Connection

- Windows 95 and Windows 98 do not support Handy Q's 1394 interface. (You can use Windows 98SE or later version)
- Try connecting to other 1394 ports when the connection is unsuccessful.

Product Specifications

Category		Specifications
OS		Windows 98SE, Windows ME, Windows 2000, Windows XP, Mac OS 8.6 or later
Interface		For both IEEE 1394, USB 2.0/1.1
Data Transfer Speed	USB 2.0	MAX 480 Mbps
	IEEE1394	MAX 400 Mbps
Memory		SEV04UP/DOM-40.0GB SEV08UP/DOM-80.0GB
Front	LED Lamp (Blue)	Power On-Off/Read/Write Mode Indicator
Back	Port	IEEE 1394 port A/port B, USB 2.0/1.1 port
	Switch	Power switch
	Power jack	12V/3A adapter power jack
Operating Environment	Operating	Temperature: 41~104°F (5~40 °C), Humidity: 30~85%
	Storage	Temperature: 41~140°F (-10~60°C), Humidity: 10~90%
Maximum Shock Absorption: Operating		63G
Maximum Shock Absorption: Storage		250G
Dimensions (W/H/D)		220 x 52.5 x 140.5 mm
Weight		1.35Kg
Power Supply – input		AC100~240V, 60Hz, 75~100VA
Power Supply – output		12V DC/3A
Power Consumption		Operating: 6.3W, Standby: 6.15W

Fcc information to the user

This equipment has been tested and found to comply with the limits for a Class B digital device, pursuant to Part 15 of the FCC Rules. These limits are designed to provide reasonable protection against harmful interference in a residential installation.

This equipment generates, uses and can radiate radio frequency energy and, if not installed and used in accordance with the instructions, may cause harmful interference to radio communications. However, there is no guarantee that interference will not occur in a particular installation. If this equipment does cause harmful interference to radio or television reception, which can be determined by turning the equipment off and on, the user is encouraged to try to correct the interference by one or more of the following measures :

- Reorient or relocate the receiving antenna.
- Increase the separation between the equipment and receiver.
- Connect the equipment into an outlet on a circuit different from that to which the receiver is connected.
- Consult the dealer or experienced radio TV technician for help.

CAUTION

Change or modifications not expressly approved by the manufacturer responsible for compliance could void the user's authority to operate the equipment.