

Welcome to AT&T

Thank you for purchasing the AT&T USBConnect Force.
Please use this Quickstart for a brief overview of device setup

OR

take advantage of our interactive web tutorials at

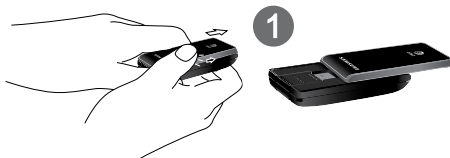
att.com/Tutorials

for the most complete and up-to-date device setup information.
The online tutorials include step-by-step instructions and an easy
search function to find what you need quickly.

Getting Started

Insert device into the USB port

1. Slide open the front.
2. Open USB Connector.
3. Swivel USB Connector if needed.
4. Carefully insert device into available USB port. Do not close slider or force it to close. Optional USB cable included for convenience.



Use upright for optimal performance.



Install the software

- After you insert the device into the laptop for the first time, the AT&T Communication Manager (ACM) auto-install begins. Follow the on-screen prompts.
Note: The enclosed CD is provided as a backup option to install ACM.

Start AT&T Communication Manager

- For Windows, ACM automatically opens or click on the desktop shortcut.
- For Mac, go to **Applications > AT&T > AT&T Communication Manager**.



AT&T Communication Manager

AT&T Communication Manager (ACM) is an auto-loading application that lets you control connections to the AT&T mobile network, other mobile networks worldwide and to available Wi-Fi networks, including thousands of AT&T Wi-Fi Hot Spots. ACM will auto-install when you first plug the device into your laptop and works on both Microsoft Windows (Windows 7, Vista and XP) and Apple Macintosh (MacOS 10.4 and above). ACM offers a range of tools to manage connections, find the best connection available and connect quickly.



Connection: Use this screen to choose between connecting to the Mobile AT&T Network or to a local Wi-Fi network in range



Settings: Use this screen to display all the settings or to customize ACM to better meet your needs.



Updates: Use this screen to control update alerts and the status of any installed updates.



Text Messages: Use this screen to send text messages or see sent or received messages.



Contacts: Use this screen to view, add or shows a list of the numbers/names of those who you have sent or received text messages from, or allows you to add new numbers/names.

Note: This device does not have WIFI and thus does not
4 apply for this application.

Connect Options

ACM offers two easy ways to access the Internet. Choose a mobile connection to get on the AT&T mobile network or a Wi-Fi connection. Both are available from the main Connect screen. Your data usage through the Mobile network is tracked and part of your data plan. **Data usage through Wi-Fi does not count against your AT&T data usage.**

- **Connect via Mobile network**

To get started, click the blue **Connect** button in the Mobile section. Once connected, launch your browser or, email or other Internet application. To disconnect, click the orange **Disconnect** button. The usage meter is displayed as a bar near the bottom of the Mobile connection section.

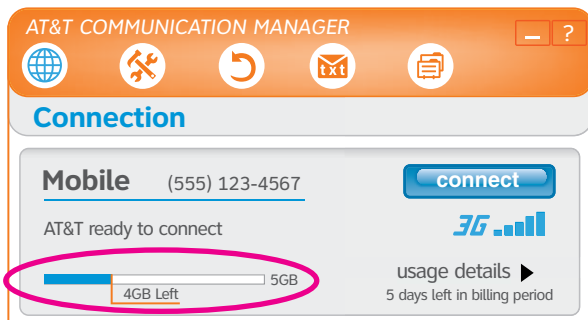


Note: This device does not have WIFI and thus does not apply for this application.

Manage data usage

For all DataConnect plans, you can manage your monthly wireless data usage and avoid overage charges by:

- Taking advantage of the usage meter provided as a way to easily track your data usage. The **Usage meter** in the Mobile connection section shows the estimated data usage within your monthly billing cycle compared to your monthly allowance as a bar graph as well as the number of days left in the cycle. Additional details are available by selecting the Usage Details link.



- Using your Internet service (DSL, Cable, etc.) and home Wi-Fi networks to connect while at home and in the office.
- Unlimited usage on AT&T's entire national Wi-Fi network at no additional charge. Wi-Fi enabled device required. Other restrictions apply. For more details and locations see attwifi.com.

Note: This device does not have WIFI and thus does not apply for this application.

Need help?

For more information about using your new device and AT&T Communication Manager, please refer to the interactive web tutorial available at **att.com/Tutorials**.

Call AT&T Customer Care at 800-331-0500 for assistance with your AT&T service. Please enter the 10-digit wireless number associated with your DataConnect service when prompted. This will direct your call to a specialized Care team. The wireless number associated with your DataConnect rate plan can be found:

- on your sales receipt;
- on your monthly statement;
- on the main ACM screen (device must be inserted into laptop).

Additional support is available online including device specifications, troubleshooting and user forums at **att.com/DeviceSupport**.

Samsung is a trademark of Samsung Electronics America, Inc. and/or its related entities. © 2010 AT&T Intellectual Property. All rights reserved. AT&T, the AT&T logo and all other AT&T marks contained herein are trademarks of AT&T Intellectual Property and/or AT&T affiliated companies. All other marks contained herein are the property of their respective owners.



Health and safety information

Exposure to Radio Frequency (RF) Signals

Certification Information (SAR)

Your wireless dongle is a radio transmitter and receiver. It is designed and manufactured not to exceed the exposure limits for radio frequency (RF) energy set by the Federal Communications Commission (FCC) of the U.S. government. These FCC exposure limits are derived from the recommendations of two expert organizations, the National Council on Radiation Protection and Measurement (NCRP) and the Institute of Electrical and Electronics Engineers (IEEE). In both cases, the recommendations were developed by scientific and engineering experts drawn from industry, government, and academia after extensive reviews of the scientific literature related to the biological effects of RF energy.

The exposure limit set by the FCC for wireless devices employ a unit of measurement known as the Specific Absorption Rate (SAR). The SAR is a measure of the rate of absorption of RF energy by the human body expressed in units of watts per kilogram (W/kg). The FCC requires wireless dongle to comply with a safety limit of 1.6 watts per kilogram (1.6 W/kg). The FCC exposure limit incorporates a substantial margin of safety to give additional protection to the public and to account for any variations in measurements.

SAR tests are conducted using standard operating positions accepted by the FCC with the dongle transmitting at its highest certified power level in all tested frequency bands. Although the SAR is determined at the highest certified power level, the actual SAR level of the dongle while operating can be well below the maximum value. This is because the dongle is designed to operate at multiple power levels so as to use only the power required to reach the network. In general, the closer you are to a wireless base station antenna, the lower the power output.

Before a new wireless device is available for sale to the public, it must be tested and certified to the FCC that it does not exceed the exposure limit established by the FCC. Tests for each model dongle are performed in positions and locations (e.g. each side of the dongle facing the user) as required by the FCC.

SAR information on this and other model device can be viewed on-line at

device, follow the instructions on the website and it should provide values for typical or maximum SAR for a particular device. Additional product specific SAR information can also be obtained at www.fcc.gov/cgb/sar.

FCC Notice and Cautions

FCC Notice

