

Samsung GALAXY Note[®] 8.0

4 G L T E T A B L E T

User Manual

**Please read this manual before operating your
tablet, and keep it for future reference.**



SAMSUNG

Intellectual Property

All Intellectual Property, as defined below, owned by or which is otherwise the property of Samsung or its respective suppliers relating to the SAMSUNG Phone, including but not limited to, accessories, parts, or software relating there to (the “Phone System”), is proprietary to Samsung and protected under federal laws, state laws, and international treaty provisions. Intellectual Property includes, but is not limited to, inventions (patentable or unpatentable), patents, trade secrets, copyrights, software, computer programs, and related documentation and other works of authorship. You may not infringe or otherwise violate the rights secured by the Intellectual Property. Moreover, you agree that you will not (and will not attempt to) modify, prepare derivative works of, reverse engineer, decompile, disassemble, or otherwise attempt to create source code from the software. No title to or ownership in the Intellectual Property is transferred to you. All applicable rights of the Intellectual Property shall remain with SAMSUNG and its suppliers.

Open Source Software

Some software components of this product incorporate source code covered under GNU General Public License (GPL), GNU Lesser General Public License (LGPL), OpenSSL License, BSD License and other open source licenses. To obtain the source code covered under the open source licenses, please visit:

<http://opensource.samsung.com>.

Disclaimer of Warranties; Exclusion of Liability

EXCEPT AS SET FORTH IN THE EXPRESS WARRANTY CONTAINED ON THE WARRANTY PAGE ENCLOSED WITH THE PRODUCT, THE PURCHASER TAKES THE PRODUCT "AS IS", AND SAMSUNG MAKES NO EXPRESS OR IMPLIED WARRANTY OF ANY KIND WHATSOEVER WITH RESPECT TO THE PRODUCT, INCLUDING BUT NOT LIMITED TO THE MERCHANTABILITY OF THE PRODUCT OR ITS FITNESS FOR ANY PARTICULAR PURPOSE OR USE; THE DESIGN, CONDITION OR QUALITY OF THE PRODUCT; THE PERFORMANCE OF THE PRODUCT; THE WORKMANSHIP OF THE PRODUCT OR THE COMPONENTS CONTAINED THEREIN; OR COMPLIANCE OF THE PRODUCT WITH THE REQUIREMENTS OF ANY LAW, RULE, SPECIFICATION OR CONTRACT PERTAINING

THERE TO. NOTHING CONTAINED IN THE INSTRUCTION MANUAL SHALL BE CONSTRUED TO CREATE AN EXPRESS OR IMPLIED WARRANTY OF ANY KIND WHATSOEVER WITH RESPECT TO THE PRODUCT. IN ADDITION, SAMSUNG SHALL NOT BE LIABLE FOR ANY DAMAGES OF ANY KIND RESULTING FROM THE PURCHASE OR USE OF THE PRODUCT OR ARISING FROM THE BREACH OF THE EXPRESS WARRANTY, INCLUDING INCIDENTAL, SPECIAL OR CONSEQUENTIAL DAMAGES, OR LOSS OF ANTICIPATED PROFITS OR BENEFITS.

Modification of Software

SAMSUNG IS NOT LIABLE FOR PERFORMANCE ISSUES OR INCOMPATIBILITIES CAUSED BY YOUR EDITING OF REGISTRY SETTINGS, OR YOUR MODIFICATION OF OPERATING SYSTEM SOFTWARE.

USING CUSTOM OPERATING SYSTEM SOFTWARE MAY CAUSE YOUR DEVICE AND APPLICATIONS TO WORK IMPROPERLY. YOUR CARRIER MAY NOT PERMIT USERS TO DOWNLOAD CERTAIN SOFTWARE, SUCH AS CUSTOM OS.

Samsung Telecommunications America (STA), LLC

Headquarters:

1301 E. Lookout Drive
Richardson, TX 75082

Customer Care Center:

1000 Klein Rd.
Plano, TX 75074

Toll Free Tel: 1.888.987.HELP (4357)

Internet Address:

<http://www.samsung.com>

©2013 Samsung Telecommunications America, LLC. Samsung is a registered trademark of Samsung Electronics Co., Ltd.

Do you have questions about your Samsung Mobile tablet? For 24 hour information and assistance, we offer a new FAQ/ARS System (Automated Response System) at: <http://www.samsung.com/us/support>

Nuance[®], VSuite[™], T9[®] Text Input, and the Nuance logo are trademarks or registered trademarks of Nuance Communications, Inc., or its affiliates in the United States and/or other countries.

The Bluetooth[®] word mark, figure mark (stylized “B Design”), and combination mark (Bluetooth word mark and “B Design”) are registered trademarks and are wholly owned by the Bluetooth SIG.

microSD[™] and the microSD logo are Trademarks of the SD Card Association.

Openwave[®] is a registered Trademark of Openwave, Inc.

LTE is a trademark of ETSI.

 and  are trademarks of SRS Labs, Inc. CS Headphone and WOW HD technologies are incorporated under license from SRS Labs, Inc.

, DivX[®], DivX Certified[®] and associated logos are trademarks of Rovi Corporation or its subsidiaries and are used under license.

DivX Certified[®] to play DivX[®] video up to HD 720p, including premium content.

ABOUT DIVX VIDEO: DivX[®] is a digital video format created by DivX, LLC, a subsidiary of Rovi Corporation. This is an official DivX Certified[®] device that has passed rigorous testing to verify that it plays DivX video. Visit www.divx.com for more information and software tools to convert your files into DivX videos.

ABOUT DIVX VIDEO-ON-DEMAND: This DivX Certified® device must be registered in order to play purchased DivX Video-on-Demand (VOD) movies. To obtain your registration code, locate the DivX VOD section in your device setup menu (tap **Apps > Settings > About device > Legal information > License settings > DivX® VOD > Register**).

Go to vod.divx.com for more information on how to complete your registration.

Google, the Google logo, Android, the Android logo, Google Play, Gmail, Google Mail, Google Maps, Google Music, Google Talk, Picasa, YouTube and other marks are trademarks of Google Inc.

Wi-Fi is a registered trademark of the Wireless Fidelity Alliance, Inc.

Swype and the Swype logos are trademarks of Swype, Inc. © 2010 Swype, Inc. All rights reserved.

Devices purchased for use on AT&T's system are designed for use exclusively on AT&T's system. You agree that you won't make any modifications to the Equipment or programming to enable the Equipment to operate on any other system. A voice plan is required on all voice-capable devices, unless specifically noted otherwise in the terms governing your agreement. Some devices or plans may require you to subscribe to a data plan.

Your tablet is designed to make it easy for you to access a wide variety of content. For your protection, AT&T wants you to be aware that some applications that you enable may involve the location of your tablet being shared. For applications available through AT&T, AT&T offers privacy controls that let you decide how an application may use the location of your tablet and other devices on your account. However, AT&T's privacy tools do not apply to applications available outside of AT&T. Please review the terms and conditions and the associated privacy policy for each location-based service to learn how location information will be used and protected.

Your tablet may be used to access the Internet and to download, and/or purchase goods, applications, and services from AT&T or elsewhere from third parties. AT&T provides tools for you to control access to the Internet and certain Internet content. These controls may not be available for certain devices which bypass AT&T controls.

AT&T may collect certain types of information from your device when you use AT&T services to provide customer support and to improve its services. For more information on AT&T's Privacy Policy, visit <http://www.att.com/privacy>.

Table of Contents

Section 1: Getting Started6

Understanding This User Manual	6
Battery	7
Installing the SIM Card	9
Turning Your Device On and Off	10
Setting Up Your Device	10
Creating a New Google Account	11
Creating a Samsung Account	11
Retrieving Your Google Account Password	12
Memory Card	12
Locking and Unlocking the Touch Screen	13
Troubleshooting	13

Section 2: Understanding Your Device14

Features	14
Front View	15
Home Screen	17
Navigating Your Device	19
S Pen	20
Notifications	23

Status Details	23
Quick Settings	23
Status Bar	27
Primary Shortcuts	28
Widgets	28
App Shortcuts	28
Folders	29
Wallpapers	30
Multi Window Tray	30
Apps Screen	32
Memory Card	32

Section 3: Contacts and Accounts34

Accounts	34
Contacts	35
Groups	38
Favorites	40

Section 4: Entering Text42

Text Input Methods	42
Using the Samsung Keyboard	42

Using the Handwriting Feature	46	Section 8: Connections	82
Using Google Voice Typing	47	Internet	82
Entering Text Using Swype	47	Wi-Fi	84
Section 5: Messaging	49	Wi-Fi Direct	86
Types of Messages	49	Bluetooth	87
Gmail	49	Managing Downloads	89
Email	52	Kies Via Wi-Fi	89
Google Talk	55	Synchronizing with Windows Media Player	90
Google+	59	Connecting as a Mass Storage Device	91
Messenger	59	Section 9: Applications	92
ChatON	59	Updating Applications	92
Section 6: Music	61	GPS Applications	92
Listening to Music	61	Alarm	93
Google Play Music	61	AllShare Play	94
Music Hub	62	Amazon Kindle	95
Music Player	62	aNote HD	95
Section 7: Photos and Video	68	AT&T AllAccess	97
Camera	68	AT&T Device Help	97
Video Player	75	AT&T Locker	97
Gallery	77	AT&T Ready2Go	97
		Browser	98
		Calculator	98

Calendar	98	myAT&T	108
Camera	101	Navigation	109
ChatON	101	Paper Artist	109
Chrome	101	Play Books	110
Contacts	101	Play Magazines	110
Downloads	101	Play Movies & TV	110
Email	102	Play Music	111
Flipboard	102	Play Store	111
Gallery	102	Polaris Office	112
Game Hub	103	S Note	112
Games	103	S Voice	112
Gmail	103	Samsung Apps	113
Google Search	103	Settings	113
Google+	104	Smart Remote	113
Group Play	104	Talk	114
Help	105	Video Player	114
Local	105	Voice Search	114
Maps	106	WatchOn	114
Messenger	107	World Clock	117
Music Hub	107	YouTube	118
Music Player	107	YPmobile	118
My Files	107		

Section 10: Settings	120
Accessing Settings	120
Wi-Fi	120
Bluetooth	122
Data Usage	123
More Settings	124
Home screen mode	128
Sound	129
Display	130
Storage	131
Power Saving Mode	132
Battery	132
Application Manager	132
Location Services	134
Lock Screen	135
Security	137
Language and Input	139
Cloud	144
Back Up and Reset	145
Accounts	146
Motion	148
S Pen	148

Accessory	150
Date and Time	150
Accessibility	151
Developer Options	153
About Device	155

Section 11: Health and Safety

Information	157
Exposure to Radio Frequency (RF) Signals ..	157
Specific Absorption Rate (SAR) Certification Information	162
FCC Part 15 Information to User	164
Smart Practices While Driving	164
Battery Use and Safety	165
Samsung Mobile Products and Recycling ...	167
UL Certified Travel Charger	167
Display / Touch-Screen	168
GPS	168
Care and Maintenance	169
Responsible Listening	170
Operating Environment	172
Restricting Children's Access to Your Mobile Device	174

FCC Notice and Cautions	174
Other Important Safety Information	174
Section 12: Warranty Information	176
Standard Limited Warranty	176
End User License Agreement for Software . . .	181
Section 13: Samsung Product	
Registration	189
Index	190

DRAFT
For Internal Use Only

Section 1: Getting Started

This section helps you to quickly start using your device.

Understanding This User Manual

The sections of this manual generally follow the features of your device. A robust index for features begins on page 190.

Also included is important safety information, beginning on page 157, that you should know before using your device.

This manual gives navigation instructions according to the default display settings. If you select other settings, navigation steps may be different.

Unless otherwise specified, all instructions in this manual assume that you are starting from a Home screen. To get to a Home screen, you may need to unlock the device. For more information, refer to “*Locking and Unlocking the Touch Screen*” on page 13.

Note: Instructions in this manual are based on default settings and may vary from your device depending on the software version on your device and any changes to the device’s settings.

Note: Unless stated otherwise, instructions in this user manual start with the device unlocked, at the Home screen. All screen images in this manual are simulated. Actual displays may vary depending on the software version of your device and any changes to the device’s settings.

Special Text

In this manual, some text is set apart from the rest. This special text is intended to point out important information, share quick methods for activating features, define terms, and more. The definitions for these methods are as follows:

- **Notes:** Presents alternative options for the current feature, menu, or sub-menu.
- **Tips:** Provides quick or innovative methods or useful shortcuts.
- **Important:** Points out important information about the current feature that could affect performance.
- **Warning:** Brings important information to your attention that can help to prevent loss of data or functionality or damage to your device.

Text Conventions

This manual provides condensed information about how to use your device. To make this possible, the following text conventions are used to represent often-used steps:

- Arrows are used to represent the sequence of selecting successive options in longer, or repetitive, procedures. For example:

From a Home screen, touch  Apps →  Settings
→ Display → Screen timeout.

Battery


Your device is powered by a rechargeable, standard Li-Ion battery. A Wall/USB Charger (Charging Head and USB cable) are included with the device for charging the battery.

Note: The battery comes partially charged. You must fully charge the battery before using your device for the first time.

After the first charge, you can use the device while charging.

Warning! Use only approved charging devices. Approved accessories are designed to maximize battery life. Using other accessories may invalidate your warranty and may cause damage.

Battery Indicator

The Battery icon  in the Status Bar shows the battery power level. When battery power is 15% or less, your device prompts you to charge the battery. If you continue to operate the device without charging, the device powers off. For battery use information, see “About Device” on page 155.

Tip: Touch the Time field to display battery charge status.

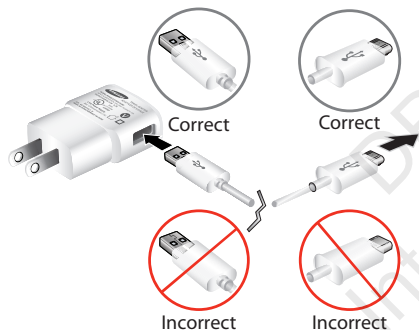
Charging the Battery

Your device comes with a Wall/USB Charger (Outlet Connector, Charging Head, and USB cable) to charge your device from any standard AC power outlet.

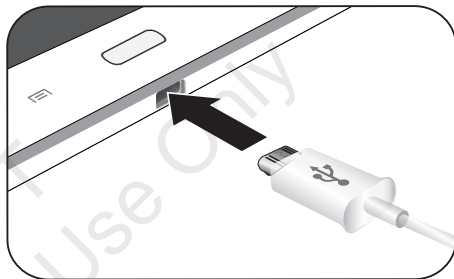
Note: The battery comes partially charged. You must fully charge the battery before using your device for the first time.

After the first charge, you can use the device while charging.

1. Insert the USB cable into the Charging Head (1).



2. Insert the USB cable into the device's Charger/Accessory Port (2).



3. Plug the Charging Head into a standard AC power outlet.

Warning! While the device is charging, if the touch screen does not function due to an unstable power supply, unplug the USB power adapter from the power outlet or unplug the USB cable from the device.

4. When charging is complete, unplug the Charging Head from the power outlet and remove the USB cable from the device.

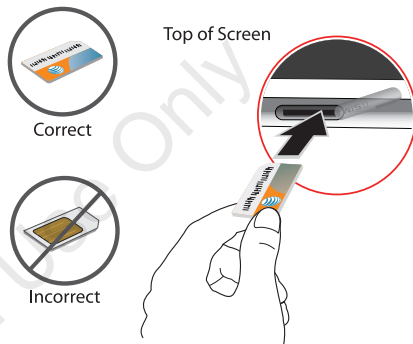
Installing the SIM Card

When you subscribe to a cellular network, you are provided with a plug-in SIM card loaded with your subscription details, such as your PIN, available optional services, and many others features.

Important! The plug-in SIM card information and its contacts can be easily damaged by scratching or bending, so be careful when handling, inserting, or removing the card. Keep all SIM cards out of reach of small children.

- Carefully slide the SIM card into the SIM card socket (as shown) until the card locks into place. The illustration shows the screen facing up.

- Make sure that the card's gold contacts face downward and that the notched corner of the card goes in first.



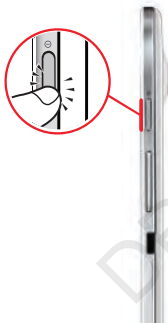
Note: If the card is not inserted correctly, the device will not detect the SIM card. Re-orient the card back into the slot if the SIM is not detected.

Turning Your Device On and Off

Turning Your Device On

- Press and hold the **Power/Lock Key** .

Note: Your device's internal antenna is located along the top back of the device. Do not block the antenna; doing so may affect signal quality and may cause the device to operate at a higher power level than is necessary. For more information, refer to “*GPS Applications*” on page 92.





Turning Your Device Off

1. Press and hold the **Power/Lock Key** .
2. At the prompt, touch **Power off** → **OK**.

Setting Up Your Device

When you first turn on your device, you are asked to set up a few things. To do that, the following screens display. Some screens can be skipped (touch **Skip**) or re-displayed (touch **Back**). Some screens display depending on the options you choose.

1. When you first turn on your tablet, the **Let's set up your device!** screen displays.
2. The default language for your tablet is English. If you would like to select Spanish, tap **Español** on the bottom right-hand side of the screen.
3. Tap **Terms & Conditions**, read the End User License Agreement for Ready2Go, then tap **Back**.
4. Tap **get started**.
– or –



Touch **Cancel** to set up your tablet later. You can access Ready2Go by tapping **Applications**  → **AT&T Ready2Go** .

5. Read and follow the instructions on each screen to set up your tablet.

Creating a New Google Account

In order to utilize your device to the fullest extent, you will need to create a Google™ Account when you first use your device. With a Google Account, Google applications will always be in sync between your tablet and computer.

If you did not create a new account during the setup procedure when you first turned your tablet on, follow these steps:

1. From the Home screen, tap  → **Gmail** .

The **Add a Google Account** screen displays.

2. Tap **New** to create a new Google account.
– or –






If you already have a Google account, tap **Existing** to sign in and add the account to your tablet.

3. Follow the on-screen instructions to add a Google Account.

Note: Once you have created a Google account, you only need to sign in.

Creating a Samsung Account

An active Samsung account is required to begin accessing applications such as ChatON and Samsung Hub. If you did not create a Samsung account when you first set up your tablet, follow these steps:

1. From the home screen, tap  → **Settings**  → **Add account.**
2. Tap  **Samsung account.**
3. Tap **Create new account.**
4. Select your Country or region..
5. Tap **Terms and conditions** to read them and tap .
6. Tap **Privacy policy** to read it and tap .
7. Tap the **I accept all the terms above** checkbox.
8. Tap **Agree.**
9. Enter the required information and tap **Sign up.**
Your Samsung account is created.

Retrieving Your Google Account Password

A Google account password is required for Google applications. If you misplace or forget your Google Account password, follow these instructions to retrieve it:

1. From your computer, use an Internet browser to navigate to <http://google.com/accounts>.
2. Once the URL loads, click on the **Can't access your account?** link and follow the on-screen instructions.

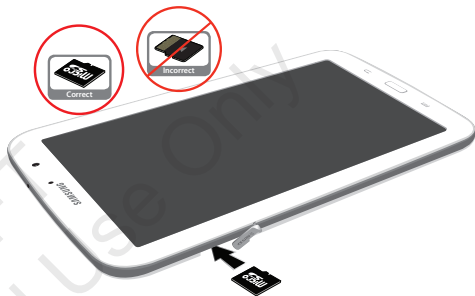
Memory Card

Your device supports removable microSD or microSDHC memory cards with maximum capacities of 64 GB (depending on the memory card manufacturer and type). Memory cards are used to store music, photos, videos, and other files.

Installing a Memory Card



1. Open the Memory Card Slot cover and turn to expose the slot.
2. With the gold contacts facing down, carefully slide the memory card into the slot, pushing gently until it clicks into place.

3. Replace the Memory Card Slot cover.



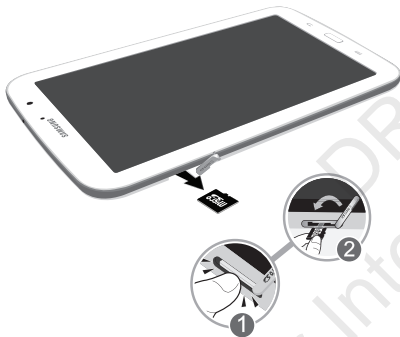
Removing a Memory Card

Important! To prevent damage to information stored on the memory card, unmount the card before removing it from the device.



1. From a Home screen, touch  **Apps** →  **Settings** → **Storage**.
2. Under **SD card**, touch **Unmount SD card** and then touch **OK**.

3. Open the Memory Card Slot cover and turn to expose the slot.
4. Gently press down on the memory card (1), so that it pops out from the slot, and carefully pull the card out (2).
5. Replace the Memory Card Slot cover.

For more information, refer to “Memory Card” on page 32.



Locking and Unlocking the Touch Screen


1. Press  to lock the touch screen.
2. Press  again to display the lock screen then swipe your finger across the screen to unlock.

Note: Swipe is the default screen locking method. To change your screen lock, see “Screen Lock” on page 135.

Tip: From the Lock screen, touch and swipe one of the app shortcut icons to launch that application.

Troubleshooting

If your device has fatal errors, hangs up, or freezes, you may need to reset the device to regain functionality.

- If your device is frozen and unresponsive, press and hold the **Power/Lock Key**  for 8 to 10 seconds.

Section 2: Understanding Your Device

This section outlines key features of your device and describes the screen and the icons that appear when the device is in use. It also shows how to navigate through the device.

Features

- 8.0-inch WXGA (1280x800) TFT (PLS) LCD touch screen
- Android Version 4.1.2
- 4G Network with 1.6 GHz quad-core processor
- Full HTML Web Browser
- Bluetooth 4.0 Wireless technology. For more information, refer to “*Bluetooth*” on page 122.
- Built-in Wi-Fi technology (802.11 a/b/g/n/h)
- 5 Megapixel camera and camcorder, plus 1.3 Megapixel forward-facing camera for video chat
- Full integration of Google applications (Gmail, YouTube, Google Maps, and Voice Search)
- Photo Gallery that supports GIF, AGIF, JPEG, PNG, BMP, WBMP, and WEBP formats
- Messaging includes Gmail, Email (corporate and personal), Google Talk (Instant Messaging), Google+, and Messenger
- HD Video Player (1080p)
- DivX Certified[®] to play DivX[®] video up to HD 720p, including premium content
- Supports HDMI/MHL connections to connect electronic devices to high-definition televisions (HDTVs) and displays.
- Music player that supports MP3, AAC/AAC+/EAAC+, WMA, OGG (vorbis), FLAC, AC-3
- 2 GB RAM memory and 16GB on-board memory, which is used for data storage and access
- Support for microSD and microSDHC Memory Cards
- S Pen for writing and playing games
- Preloaded applications such as AllShare Play, Google Play Books, Google Play Store, Music Hub, and Polaris Office. For more information, refer to “*More Application Information*” on page 32.

Front View

The following items can be found on the front of your device as illustrated.

1. **External Speakers:** Used in music or video playback, notification tones, and for other sounds.
2. **Light Sensor:** Used to control screen brightness automatically and when taking photos with the front-facing Camera.
3. **Front-facing Camera Lens:** Used when taking photos or recording videos.
4. **Display Screen:** The orientation of the display screen rotates with the tablet as you turn it. You can turn this feature on and off. For more information, refer to “*System Accessibility*” on page 151.



Back View

1. **3.5mm Headset Jack:** Plug in for headphones.
2. **Power/Lock Key:** Press and hold to turn the device on or off. Press to lock the device or to wake the screen for unlocking.
3. **Volume Key:** From a Home screen, press to adjust Master Volume. During music playback, press to adjust volume.
4. **Infrared Blaster:** Used to emit infrared signals used for controlling external devices. For more information, refer to “*WatchOn*” on page 114.
5. **S Pen:** A built-in stylus that allows you to perform various functions. For more information, refer to “*S Pen*” on page 20.
6. **Charger/Accessory Port:** Plug in a USB cable for charging or to sync music and files.
7. **SIM Card Slot:** Install your SIM card here.
8. **Memory Card Slot:** Install a memory card for storage of files.
9. **Camera Lens:** Used when taking photos or recording videos.



Home Screen

The Home screen is the starting point for using your device.

Note: Unless stated otherwise, instructions in this user manual start with the device unlocked, at the Home screen.



1. **Widgets:** Applications that run on the Home screen. Some widgets are found on the Home screen by default. For more information, refer to “*Widgets*” on page 28.
2. **AT&T AllAccess:** Allows you to view and manage your AT&T data plan.
3. **Home screen:** The starting point for using your device. Place shortcuts, widgets, and other items to customize your device to your needs.
4. **App Shortcuts:** Shortcuts to common applications. For more information, refer to “*App Shortcuts*” on page 28.
5. **Primary Shortcuts:** Shortcuts to common features. These shortcuts are found on the Home screen by default. For more information, refer to “*Primary Shortcuts*” on page 28.
6. **Apps:** Display the Apps screen.
7. **Current screen indicator:** Indicates which Home screen is being displayed. For more information, refer to “*Extended Home Screen*” on page 18.
8. **Time:** Displays the current time.

9. **Status Icons:** Indicate the status of your tablet. For more information, refer to “*Status Bar*” on page 27.

Extended Home Screen

The Home screen consists of the Home panel, plus four panels that extend beyond the display width to provide more space for adding shortcuts and widgets.

Slide your finger horizontally across the screen to scroll to the left or right side panels. As you scroll, the indicator at the top of the display shows your current position.

Note: The center panel displays when you touch Home.

Customizing the Home Screens

To customize the Home screens to suit your preferences:

1. Navigate to one of the Home screen panels.
2. Touch and hold on the screen until the **Home screen** pop-up displays.
– or –

Use the S Pen to touch and hold on the screen until the **Home screen** pop-up displays.

3. Touch **Set wallpaper** to change the Home screen wallpaper. For more information, refer to “*Wallpapers*” on page 30.
4. Under **Add to Home screen** touch:
 - **Apps and widgets** to add app or widget shortcuts on the Home screen.
 - **Folder** to add a folder on a Home screen. For more information, refer to “*Folders*” on page 29.
 - **Page** to add a Home screen.

Display Settings

You can customize display screen settings to your preferences. For more information, refer to “*Display*” on page 130.

Adding and Removing Home Screen Panels

Your device comes with seven Home screen panels. You can customize the Home screen by removing or adding panels.

Note: The panel in the center position displays when you touch Home.

1. From a Home screen, pinch the screen from the left and right side to the center to display the editing screen.

Tip: Touch and hold on the screen until the **Home screen** pop-up displays. Under **Add to Home screen**, touch **Page** to add a Home screen.



2. Use these controls to configure panels:




Remove: Touch and drag a panel to the Trash Can to remove the panel from the Home screen. It will turn red.



Add: Touch to add a new panel, up to a total of seven. This option is available when less than seven panels have been added.



Default Home Page: Touch the Home icon at the upper right corner of a panel to set it as the default home screen.


3. To rearrange the order of panels, touch and drag a panel to a new location.
4. Touch  **Back** to return to the Home screen

Navigating Your Device

Use command buttons and the touch screen to navigate.

Command Buttons

Back

Touch  **Back** to return to the previous screen, option, or step.

- Touch an option in the list.

Application Bar

The Application Bar is the area along the top of various application screens. It usually contains the Search and Menu icons, as well as other icons that are used to display options and settings.

Screen Navigation

Touch

Touch items to select or launch them. For example:

- Touch the on-screen keyboard to enter characters or text.
- Touch a menu item to select it.
- Touch an application's icon to launch the application.

Touch and Hold

Activate on-screen items. For example:

- Touch and hold a widget on the home screen to move it.
- Touch and hold on a field to display a pop-up menu of options.

Swipe, Flick, or Slide

Swipe, flick, or slide your finger vertically or horizontally across the screen. For example:

- Unlocking the screen.
- Scrolling the Home screens or a menu.

Pinch

Use two fingers, such as your index finger and thumb, to make an inward pinch motion on the screen, as if you are picking something up, or an outward motion by sweeping your fingers out.



For example:

- Pinch a photo in Gallery to zoom in.
- Pinch a webpage to zoom in or out.

S Pen

The S Pen is a stylus that assists you in performing different functions. By using the Pen button, you can minimize having to switch between touch and pen input.



1. **Pen button:** by pressing the Pen button, you can add functionality to the S Pen. For more information, refer to “Using the S Pen” on page 22.
2. **Stylus tip:** the tip of the S Pen is used for tapping the screen.

S Pen Settings

There are several settings available that control the behavior of the S Pen. For example, you can choose a sound that will play when you remove the S Pen from or return it to the slot in your device.

Instead of the default menu of shortcuts that displays when you remove the S Pen from your device, you can change the setting so that the S Note, Calendar, Crayon physics, PS Touch, or Polaris Office app launches.

Also, there is a setting to display a hovering pen icon on the screen when the pen tip is near the screen.

Plus, there is a setting that helps to conserve battery power by causing your tablet not to try to detect the S Pen when it is in its slot in your tablet.

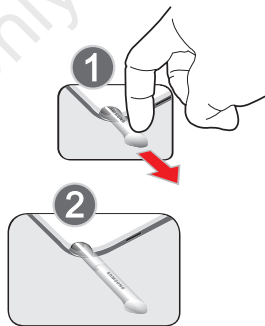
For more information, refer to “S Pen” on page 148.

Removing the S Pen From Your Device

The S Pen is conveniently stored in your device to make it easy to find.

To remove the S Pen, follow these steps:

1. Locate the S Pen at the lower right corner of the device. Use your fingernail or a sharp object to pull the end of the S Pen out of the device.(1)
2. Pull the S Pen out of the device (2).






Using the S Pen

There are several different functions you can perform by using the S Pen.

S Pen Screen Operations

The S Pen can be used for various screen operations.

- Touch a command button, such as  **Back**, or icons, such as  **Apps** or  **Email**, with the S Pen instead of your finger. The result is the same.
- To sweep to the next screen, touch and drag the screen to the left or right.


Launch Popup Note Mini App

To take quick notes or jot down ideas, you can launch the Popup Note Mini App from the default menu of shortcuts that displays when you remove the S Pen from your device. You can also launch the Popup Note Mini App from any screen with the S Pen.

To open the Popup Note Mini App:

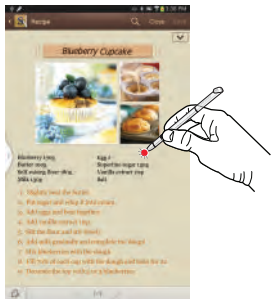
- Hold the S Pen button and double-tap the screen.



Tip: Touch  to launch the S Note app. For information on using your S Pen with the S Note app, see “S Note” on page 112.

S Pen Screen Capture

To capture a screen image, hold the S Pen button and press and hold the S Pen anywhere on the screen. Files are saved in the **Screenshots** folder. For more information, refer to “*S Pen Screen Capture*” on page 23.



Notifications



When you receive a notification, the Notification icon displays in the System Bar, to the left of the Time. Notifications indicate the arrival of Gmail, Email, alarms, and more.

Status Details

To display the current date and time, battery status, and Wi-Fi connectivity status, open Status Details.

1. Tap and swipe down the top of the screen to see the Quick Settings, Recommended shortcuts using your S Pen and any notifications.

Note: Recommended shortcuts for your S Pen are only displayed when the S Pen is removed from your tablet.

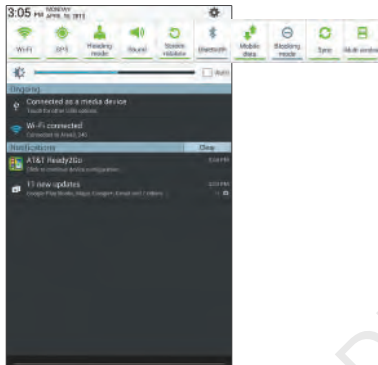
2. Touch a notification summary to respond to it.
3. Touch  **Home** or  **Back** or use the S Pen and swipe upwards to close the Status Details screen.

Quick Settings

To view and control the most common settings for your tablet, as well as accessing the complete Settings application, and viewing your notifications, open the Quick Settings panel.

1. Tap and swipe down the top of the screen to see the Quick Settings.

The Quick Settings pop-up displays.






Note: Recommended shortcuts (S Pen) is also displayed when the S Pen is removed from your tablet.

2. The Quick Settings are:

- **Wi-Fi:** Touch to enable or disable Wi-Fi. For more information, refer to “*Wi-Fi*” on page 84.

- **GPS:** Touch to enable or disable Standalone GPS services. For more information, refer to “*Use GPS Satellites*” on page 135.
 - **Reading mode:** Touch this to optimize the screen for reading.
 - **Sound / Vibrate / Mute:** Touch to enable or disable sound mode.
 - **Screen rotation:** When On the screen rotates automatically from landscape to portrait and vice versa. When Off the screen is fixed in the current mode, either portrait or landscape. For more information, refer to “*System Accessibility*” on page 151.
 - **Bluetooth:** Touch to enable or disable Bluetooth. For more information, refer to “*Bluetooth*” on page 87.
- Sweep the pop-up to the left to see additional settings.
- **Mobile data:** When enabled, you can use Mobile data for applications such as Internet, Email, and YouTube.
 - **Blocking mode:** When enabled, notifications for selected features will be disabled.
 - **Sync:** Synchronizes your device with the network. Synchronizes contacts, email, time, and a variety of accounts.

- **Multi window:** When enabled, multiple screens may display at one time.
3. Touch the **Brightness** slider and drag it to set the brightness or touch **Auto** to allow the device to set brightness automatically based on available light and battery charge status.
 4. Touch  **Settings** to open the Settings application. For more information, refer to “*Settings*” on page 120.
 5. **Notifications** displays system notifications. Touch a notification entry to display the details. Touch **Clear** to remove Notification Icons from the System Bar. For more information, refer to “*Notifications*” on page 23.
 6. Touch  or  or use the S Pen and swipe up to close the Status Details screen.

Notifications display in the System Bar and, in some cases, under the Notifications heading in the Quick Settings to alert you to activity on the tablet such as new messages, application downloads, software updates, and more. The following table lists those icons.



System Alert: Check under the Notifications heading in the Quick Settings for alerts.



Download: An application or file is being downloaded or has been downloaded to the device.



Download Successful: A recent application download or update completed successfully.



New Email Message: You have new email. Touch Reply to view and answer the email.



New Gmail Message: You have new Gmail. Touch the icon for additional information.



Google Talk Invitation: Someone has invited you to chat using Google Talk.



Music player: Music is playing. Touch the Music icon or touch the Status Details to see the song title and music player controls. For more information, refer to “*Music Player*” on page 62.



Music App: A song is playing in the Music app. Touch the Music icon or touch the Status Details to see the song title and music player controls. For more information, refer to *“Google Play Music”* on page 61.



Wi-Fi networks available: An open Wi-Fi network is in range.



GPS Active: Displays when GPS is active.



Software update: There may be a software update available for this device. For more information, refer to *“Software Update”* on page 155.



Updates Available: Updates to the applications you have downloaded are available.



Set up input methods: When the keyboard is being displayed, touch this icon to display a menu of quick keyboard settings.



Wi-Fi Direct: Displays when Wi-Fi Direct is active and your tablet is connected to another device. For more information, refer to *“Wi-Fi Direct”* on page 86.



Screenshot Captured: A screenshot has been captured. For more information, refer to *“S Pen Screen Capture”* on page 23.



Nearby Devices: The Nearby devices setting is enabled. For more information, refer to *“Nearby Devices”* on page 127.



Blocking Mode: Notifications for selected features are disabled. For more information, refer to *“Blocking Mode”* on page 128.



Event: This is a notification for one or more events. For more information, refer to *“Creating an Event or Task”* on page 100.



Navigation Active: The Navigation App is active. For more information, refer to *“Navigation”* on page 109.



USB Connected: Device is connected to a computer using a USB cable.

Status Bar

The Status Bar is part of the System Bar and displays icons to show network status, battery power, and other details.



Battery Level: Shown fully charged.



Charging Indicator: Battery is charging.



Device Power Critical: Battery has only three percent power remaining. At about 15 percent power remaining, a pop-up is displayed to remind you to charge immediately.



USB Connection Indicator: The device is connected to a computer using a USB cable, but it is not charging. The battery is only charged while connected to a computer, if the device is turned off. When the device is off, press the Power/Lock key to see the battery charging indicator.



Battery Fully Charged: When the battery is fully charged, this indicator is displayed.



Airplane Mode: Indicates that the Airplane Mode is active, which allows you to use many of your device's features, but it cannot access online information or applications.



Bluetooth Active: Bluetooth is turned on. For more information, refer to “*Bluetooth*” on page 87.



Bluetooth Connected: Your device is connected to a Bluetooth device.



Wi-Fi Active: Wi-Fi is connected, active, and communicating with a Wireless Access Point (WAP).



Alarm Set: Displays when you set an alarm to ring at a specified time. For more information, refer to “*Alarm*” on page 93.



Smart stay: Set the screen to stay on as long as you look at it. For more information, refer to “*Display*” on page 130.

Primary Shortcuts

Primary Shortcuts display at the bottom of the main Home screen.

Tip: The main Home screen is usually the center Home screen.


The default Primary Shortcuts are: Email, S Note, Browser, Camera, Settings, and Apps.

Widgets

When you first turn on your tablet, there are various widgets on the center Home screen. They can also appear on the Home screens to the left and right of the center Home screen.

Widgets are self-contained applications that you can place on the Home screens to access your favorite features.

Adding Widgets to a Home screen


1. Navigate to the Home screen on which you want to place the Widget and touch  **Apps**.
2. Touch the **Widgets** tab.

Note: Swipe across the screen horizontally to view all Widgets.

3. Touch and hold the widget's icon until the Home screen displays, then slide your finger where you want to place the icon and release it.

Note: There must be room on the screen where you want to place the widget, otherwise the widget will not add to the Home screen.


Removing Widgets

- Touch and hold the Widget until the  **Remove** icon displays, then drag the widget to the **Remove** icon.

Note: This action does not actually delete the Widget, it just removes it from the current Home screen.

App Shortcuts

Use App Shortcuts for quick access to applications or features, such as Email or other applications.

1. Navigate to the Home screen on which you want to place the App Shortcut.
2. Touch  **Apps**.
– or –


Touch and hold on the screen until the **Home screen** options pop-up displays and then touch **Apps and widgets**.

3. Touch the **Apps** tab.
4. Touch and hold the application icon until the Home screen displays, then slide your finger where you want to place the icon and release it.

For more information, refer to “*Apps Screen*” on page 32.

5. Touch and hold the App Shortcut and then drag the application icon to reposition it on the Home screen.

Removing App Shortcuts

- Touch and hold the App Shortcut until  **Remove** displays, then drag the App Shortcut to the **Remove** icon.

Folders

Place Folders on a Home screen to organize items together.

Adding Folders

To create a folder on a Home page:

1. Navigate to the desired Home screen.

2. Touch and hold on the screen until the **Home screen** pop-up displays and then touch **Folder**.

The Create folder pop-up displays.

3. Touch the **Unnamed folder** field, use the keyboard to enter a name for the folder, and touch **OK**.

A new folder displays on the Home screen.

Managing Folders

To rename a folder:

- Touch the folder, touch the current name, and use the keyboard to enter a new name for the folder.


To add an App shortcut to a folder:

1. Add the App shortcut to the Home screen that the folder is on.
2. Touch and hold the App shortcut, drag it to the folder, and drop it.

To remove an App shortcut from a folder:

1. Touch the folder to view the contents.
2. Touch the App shortcut, drag it out of the folder, and drop it on the Home screen.

Removing a Folder



- Touch and hold the folder until the  **Remove** icon displays, then drag the folder to the **Remove** icon.

Note: Any App shortcuts in the folder are also removed.

Wallpapers

You can choose a picture to display on the Home Screen, Lock screen, or on both the Home and Lock screens. Choose from preloaded wallpaper images or select a photo you have downloaded or taken with the Camera.

1. From a Home screen, touch and hold on the screen.
The **Home screen** options pop-up displays.
2. Touch **Set wallpaper**.
The Set wallpaper pop-up displays.
3. Touch **Home screen**, **Lock screen**, or **Home and lock screens**.
The **Select wallpaper from** pop-up displays the following options:



- **Gallery:** Access the Gallery to select a photo. Touch a photo to select it. Crop and resize the picture, if desired. Touch **Done** to save the picture as wallpaper. Touch **Cancel** to cancel.
- **Live wallpapers:** Choose from pre-loaded interactive animated wallpapers. Touch a wallpaper to see an example. If available, touch **Settings** to view options for the selection. Touch **Set wallpaper** to save your choice. Touch  **Back** to return to the Live wallpapers menu.
- **Wallpapers:** Choose from pre-loaded wallpaper images. Touch an image to view it. Touch **Set wallpaper** to save it as wallpaper. Touch  **Back** to return to the Home screen.

Note: Live wallpapers is not available for the Lock screen.

Multi Window Tray

There are shortcuts available that link to apps that you might need while working in other apps, such as Browser, Alarm, Calendar, ChatON, Chrome, Contacts, Email, Gallery, Gmail, and so on. Swipe up and down to access all the applications in the Multi Window Tray. In some cases, these shortcuts are


actually links to the part of the app you need most and they contain a link to the actual app where you can use other functions.

1. To access this menu, touch and hold the  **Back** key.
2. From any screen, touch  **Multi Window Tray** at the left of the screen.

The Multi Window Tray icons display.



Note: Swipe across the screen vertically to view all Multi Window Apps.

3. Touch  to customize the Multi Window Tray. For more information, refer to “*Customizing the Multi Window Tray*” on page 31.
4. Touch one of the icons to display a mini app pop-up. The pop-up varies depending on the application. Various controls display at the top of the pop-up and a miniature version of the app displays in the body of the pop-up.
5. Touch items in the body of the pop-up, such as an email entry or keys on the Calculator.

For more information, refer to “*Apps Screen*” on page 32.

Customizing the Multi Window Tray

You can choose applications to display on the Multi Window Tray and arrange them in any order.




1. From any screen, touch  **Multi Window Tray** at the bottom, center of the screen.
2. Touch .

3. Touch and drag apps in and out of the tray or to another position in the tray.

Apps Screen

The **Apps** screen displays all applications installed on your wireless device. Applications that you download and install from Google Play or from the web are also added to a Home screen.



The Apps icons are arranged in a Alphabetical grid. To arrange the Apps icons in any order you choose, follow these steps:

1. From a Home screen, touch  **Apps**.
2. Touch  **Menu** → **View type**.
3. Touch **Customizable grid**.
4. Touch  **Menu** → **Edit**.
5. Touch and hold an icon and drag it to a new position.
6. Touch **Save** to save the changes.

You can place shortcuts to applications on the Home screen for quick access to the application. For more information, refer to “*App Shortcuts*” on page 28.

Application Information

To view information about an App, such as the amount of storage it uses, force the App to stop, uninstall updates, and clear data:

1. From a Home screen, touch  **Apps** →  **Settings** → **Application manager**.
2. Touch the **All** tab, scroll through the apps list, and touch the app to open a screen with details about the App.

More Application Information

For more information, refer to “*Applications*” on page 92.

In the Applications section, each application that is available on the Applications screen is listed and described. If the application is also described in another section of this user manual, then a cross reference to that particular section is provided. Various widgets are also described.

Memory Card

Your device supports removable microSD or microSDHC memory cards for storing music, photos, videos, and files.

Installing and Removing a Memory Card


For more information about installing and removing a memory card, see “Memory Card” on page 12.

Important! To prevent damage to information stored on the memory card, always unmount the card before removing it from the device.

Formatting a Memory Card

Formatting erases all content from the memory card and prepares it for use with your device.

Formatting a Memory Card Using Your Device

1. From a Home screen, touch  **Apps** →  **Settings**
→ **Storage**.
2. After mounting the SD card, touch **Format SD card**.
3. Follow the prompts to confirm the formatting of the card.

Formatting a Memory Card Using Your Computer

Consult your computer and/or memory card reader documentation for information about formatting memory cards.

Section 3: Contacts and Accounts

This section explains how to manage contacts and accounts.



Accounts

Your device can synchronize with a variety of accounts. With synchronization, information on your device is updated with any information that changes in your accounts.

- **Samsung account:** Add your Samsung account. For more information, refer to “*Signing In to your Samsung Account*” on page 147.
- **ChatON:** Add your ChatON account. For more information, refer to “*ChatON*” on page 59.
- **Email:** Add an Email account to sync Contacts. For more information, refer to “*Email*” on page 52.
- **Facebook:** Add your Facebook account to sync Contacts.
- **Google:** Add your Google account to sync your Contacts, Calendar, and Gmail. For more information, refer to “*Gmail*” on page 49.
- **LDAP:** Add an LDAP account to find entries in an LDAP directory server.
- **Microsoft Exchange ActiveSync:** Add your Exchange account to sync Contacts, Calendar, and Email.

Setting Up Your Accounts

Set up and manage your synchronized accounts with the **Accounts** setting.



1. From a Home screen, touch  **Apps** →  **Settings** → **Add account**.
2. Touch the account type.
3. Follow the prompts to enter your account credentials to complete the set-up process.

Your tablet communicates with the appropriate account servers to set up your account. When complete, your account displays in the **Accounts** area of the Settings screen.


Contacts





Store contact information for your friends, family, and colleagues to quickly access information or to send a message.

To access Contacts:

- From a Home screen, touch  **Apps**
→  **Contacts**.

Creating Contacts



1. From a Home screen, touch  **Apps**
→  **Contacts** → .
The **Save contact to** pop-up displays.
2. Touch **Device**, **SIM**, or an account that you have already set up.
3. Touch the Contact photo to set up a photo to identify the contact.
4. Touch contact fields to display the keyboard and enter information:
 - Some fields have preset values. Touch the field and touch the desired value. For example, touch the  Label tab and touch a label for the field.


- Other fields have to be input. Touch the field and use the on-screen keyboard to input information.
 - Touching the check box next to some fields may make additional fields available.
 - Touch  to add additional fields. Touch  to remove an unused field. Also, touch **Add another field** to add other fields.
 - Touch the screen and swipe up or down to display additional fields or touch **Next** on the keyboard to move to the next field.
5. Touch **Done** to remove the keyboard.
 6. When you finish entering information, touch  **Save**.
– or –
Touch  **Cancel** to cancel and discard changes.

Tip: Display a contact's record and touch the **Email** field to send an email, the **Address** field to display the address on a map, or the **Website** field to link to the website.

Updating Contacts




To update an existing contact:

1. From a Home screen, touch  **Apps**
→  **Contacts**.

2. Touch a contact in the Contacts list to view its information.
3. Touch  **Edit**.
4. Continue entering contact information. For more information, refer to “*Creating Contacts*” on page 35.




Deleting Contacts

To delete a contact:

1. From a Home screen, touch  **Apps**
→  **Contacts**.
2. Touch a contact in the **Contacts** list to view its information, and then touch  **Delete**. At the prompt, touch **OK**.





Managing Photo IDs

To remove or update a contact’s Photo ID:

1. From a Home screen, touch  **Apps**
→  **Contacts**.
2. Touch  **Edit**.
3. Touch the Contact photo, then touch **Remove, Image, Take picture, S Note, Pictures by people**.

Contacts Display Options

There are various ways to display your Contacts and general Contacts settings.




1. From a Home screen, touch  **Apps**
→  **Contacts**.
2. Touch **Groups**, **Favorites**, or **Contacts**, above the Contacts List, to view contacts various ways:
 - **Groups**: Displays the possible Groups, such as Not assigned, Co-workers, Family, Friends, and so on. The number of contacts in the group is displayed next to the group name. Touch a group name to show only contacts in that group. For more information, refer to “*Creating a New Group*” on page 38.
 - **Favorites**: Show only your favorite, or starred, contacts. For more information, refer to “*Favorites*” on page 40.
 - **Contacts**: Show all your contacts. Touch the **Search** field and enter a keyword to list contacts that contain that keyword.
3. From the **Groups**, **Favorites**, or **Contacts** list, touch  **Menu** to display the options for each grouping.
4. From the **Contacts** list, touch  **Menu** → **Settings** to display and manage Contacts settings.

Linked Contacts





Your device can synchronize with multiple accounts, including Google, Corporate Exchange, and other email providers. When you synchronize contacts from these accounts with your device, you may have multiple contacts for one person.

Linking, or joining, imported contact records allows you to see all the contact's numbers and addresses together in one contact entry. Linking also helps you keep your contacts updated, because any changes that your contacts make to their information in the respective accounts is automatically updated the next time you synchronize with the account.

Joining Contacts

1. From a Home screen, touch  **Apps**
→  **Contacts**.
2. Touch a contact in the **Contacts** list to view its information.
3. Touch  **Menu** → **Join contact**.
4. Touch the contact you want to Join.
The joined contact's information is displayed with the original contact's information.
5. Repeat Steps 3 and 4 to join other contacts.




Separating Contacts

1. From a Home screen, touch  **Apps**
→  **Contacts**.
2. Touch a contact in the **Contacts** list to view its information.
3. Touch  **Menu** → **Separate contact**.
A list of Joined contacts displays.
4. Touch  → **OK** to separate a joined contact.
The contact is removed from the list.

Sharing Contact Information

You can send a contact's information by way of Bluetooth to other Bluetooth devices or in an Email or Gmail as an attachment.

Note: Not all Bluetooth devices accept contacts and not all devices support transfers of multiple contacts. Check the target device's documentation.

1. From a Home screen, touch  **Apps**
→  **Contacts**.
2. Touch  **Menu** → **Share namecard via**.

Tip: Set up a contact record for yourself to share your information with others.

3. At the prompt, choose a sending method such as Bluetooth.
4. Follow the prompts to send the contact information.

Importing and Exporting Contacts

To back up and restore your contacts information, you can export your contacts list to a storage device, such as a PC, or import your contacts list (previously exported) from a storage device.




1. Use the USB cable to connect your device to the storage device.
2. From a Home screen, touch  **Apps**
→  **Contacts**.
3. Touch  **Menu** → **Import/Export**.
The Import/Export contacts pop-up displays.
4. Touch an option and then follow the prompts to complete the operation.

Groups

Assign contacts to Groups to make searching for contacts faster or to quickly send messages to group members.

Creating a New Group

Create a new group when you add or edit a contact.





1. From a Home screen, touch  **Apps**
→  **Contacts**.
2. Touch **Groups** then touch .
3. Touch the **Group name** field and use the keyboard to enter a new Group name.
4. Touch the **Add member** and place a **Done** next to the contacts to be assigned to this group.
5. Touch **Save** to save the new group name.

Tip: Contacts can belong to more than one group. Just touch the contact's **Groups** field and touch each group.

Once you create a new group, the Contacts List can be set to display only the contacts in that group. For more information, refer to “*Contacts Display Options*” on page 36.




Renaming a Group


To rename a group that you created:

1. From a Home screen, touch  **Apps**
→  **Contacts**.
2. Touch **Groups** and then touch the group you want to rename.
3. Touch  **Menu** → **Edit**.
4. Touch the **Group name** field and use the keyboard to enter a new Group name.
5. Touch  to save the new group name.

Deleting Groups

To delete a group that you created:





1. From a Home screen, touch  **Apps**
→  **Contacts**.
2. Touch **Groups** and then touch any group you want to delete.
3. Touch  **Menu** → **Delete groups**.
The groups that can be deleted display.

4. Touch **Select all** or the name of each group to delete.
5. Touch  **Delete** to delete the groups. Choose from **Group only** or **Group and group members**.

Adding Group Members





To add a contact to a group, just Edit a contact's Group field. For more information, refer to “*Updating Contacts*” on page 35.

To add multiple contacts to a group:

1. From a Home screen, touch  **Apps**
→  **Contacts**.
2. Touch **Groups** and then touch the group to which you want to add members.
3. Touch  **Menu** → **Add member**.
The contacts that can be added display.
4. Touch **Select all** or the name of each contact to add.
5. Touch  **Done** to add the contacts to the group.

Removing Group Members

To remove contacts from a group:

1. From a Home screen, touch  **Apps**
→  **Contacts**.
2. Touch **Groups** and then touch the group from which you want to remove members.
3. Touch  **Menu** → **Remove member**.
4. Touch **Select all** or the name of each contact to remove.
5. Touch  **Done** to remove the contacts.



Contacts are removed from the group and the group name is removed from each contact's **Group** field.



Favorites

Mark contact records with a  gold star to identify them as favorites.

Adding Favorites

To add a contact to the Favorites list:



1. From a Home screen, touch  **Apps**
→  **Contacts**.
2. Touch a contact to display it.

3. Touch the  **Star** next to the contact name so that it turns gold .

Tip: You do not have to edit the contact to change the Starred status.





Accessing Favorites

To view your favorites list:





1. From a Home screen, touch  **Apps**
→  **Contacts**.
2. Touch **Favorites** above the Contacts List.
Only your starred contacts display.

Removing Favorites

To remove one or more contacts from your favorites list:

1. From a Home screen, touch  **Apps**
→  **Contacts**.
2. Touch **Favorites** above the Contacts List.
3. Touch  **Menu** → **Remove from favorites**.
4. Touch **Select all** or the name of each contact to remove.
5. Touch  **Done** to remove the contacts.

To remove one contact from your favorites list:

1. From a Home screen, touch  **Apps**
→  **Contacts**.
2. Touch a contact to display it.
3. Touch the  **Star** next to the contact's name so that it turns gray  to remove it from the Favorites list.

DRAFT
For Internal Use Only

Section 4: Entering Text

This section describes how to select the desired text input method when entering characters into your tablet. This section also describes the predictive text entry system that reduces the amount of key strokes associated with entering text.

Your tablet comes equipped with an orientation detector that can tell if the tablet is being held in an upright (Portrait) or sideways (Landscape) orientation. This is useful when entering text.

Text Input Methods

There are three text input methods available:

- **Google Voice typing:** allows you to enter text by speaking.
- **Samsung keyboard (default):** Samsung's on-screen QWERTY keypad that can be used in both portrait and landscape orientation.
- **Swype:** a new way to enter text on touch screens. Instead of tapping each key, use your finger to trace over each letter of a word.

You can set a default text entry method in Settings. For more information, refer to “*Keyboards and Input Methods*” on page 140.

To choose a text input method while entering text:

1. Touch  **Choose input method** in the Status bar.

The Set up input methods pop-up displays.

2. Touch an input method to activate it.

Using the Samsung Keyboard

The Samsung keyboard is a custom virtual QWERTY keyboard, featuring optional predictive text or continuous input. Input characters by touching the on-screen keys with your finger or use speech recognition.

You can enable predictive text, to have the Samsung keyboard match your key touches to common words and displays them. The Personalization option learns from GMail, Facebook and Twitter. Log into these applications to enable the Samsung keyboard to learn from your text input.

Keyboard Types

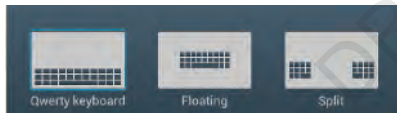
In addition to the default QWERTY keyboard, there are two other types of the Samsung keyboard: a **Floating** keyboard and a **Split** keyboard.

To change the keyboard type:

1. Use two fingers, such as your index finger and thumb, to make an inward pinch motion on the screen, where the keyboard is displayed.



A pop-up displays the three keyboard types.



2. Touch one of the keyboard types to display it.

The Split keyboard can be moved up and down and the Floating keyboard can be moved anywhere.


- Tap and hold with two fingers to move the Floating or Split keyboard.

Configuring the Samsung Keyboard

You can configure the Samsung keyboard to your preferences. While entering text:

- Touch  in the Status bar to display **Choose input method** and then select **Set up input methods** in the pop-up.


– or –

Touch and hold  on the keyboard and then select from the pop-up menu.

The Samsung keyboard settings screen displays.

For more information, refer to “*Samsung Keyboard Settings*” on page 140.

Entering Upper and Lower Case Letters


The default case is lower case (abc). Enter upper and lower case alphabet letters by touching the Shift key  to toggle the case, before touching the letter key(s).

- Touch once to switch from abc to Abc mode.
- Touch twice to switch to ABC mode. When ABC mode is enabled, the Shift key background turns blue.

Entering Symbols and Numbers

The number keys are displayed at the top of the keyboard and are always available.

To enter common symbols, touch  to switch to symbol mode, then touch the corresponding key.

There are two pages of symbols. Touch  to switch to the next page.

Touch and hold a vowel key (A, E, I, O, U, or Y) or the C, N, or S key to open a small window where you can choose an accented vowel or other alternate letter. Slide to the letter until it is highlighted, and release.

Touch and hold the Period key (.) to open a small window with a set of common symbols.


Using Predictive Text

By using Predictive text, you can have next-letter prediction and regional error correction, which compensates for pressing the wrong keys on the QWERTY keyboard.

Note: Enable Predictive text in Samsung keyboard settings. For more information, refer to “*Samsung Keyboard Settings*” on page 140.

While entering characters, potential word matches display in the Predictive text area above the keyboard.

- Touch a word to insert it into your text.

Tip: Touch  to display more words.

Samsung Keyboard Settings

For information on how you can configure your Samsung keyboard settings, see “*Samsung Keyboard Settings*” on page 140.

Using Google Voice Typing from the Samsung Keyboard

When you enable the Google voice typing setting, you can use your voice to enter text instead of the keyboard.


For more information about enabling Voice input, see “*Using Google Voice Typing*” on page 47

Editing Text

You can edit the text you enter in text fields by cutting, copying, or pasting text. These operations can be performed within and across apps. However, some apps do not support editing some or all of the text displayed while others may offer their own way to select text.



Editing Existing Text

To edit text that you have entered:

1. Touch the text at the point you want to edit.
The **Cursor** displays at the point you touched.
2. Touch and drag the **Cursor** to a better position, if necessary.
3. Enter additional text or delete text by repeatedly touching the  **Delete** key.

Copying, Deleting, or Replacing Text

To select and copy, delete, or replace text:

1. Touch and hold the text or word you want to select.
The selected text is highlighted with a   tab at each end of the selection.
2. Touch and drag either tab to select more or less text.

Tip: Touch **Select all** in the Application bar to select all text in the field. Touch on another area of the screen or touch **Done** to deselect the text.

3. Depending on the action you want to take for the selected text, in the Application bar touch:

- **Select all** to highlight all text in the field.
- **Cut** to remove the selected text.
- **Copy** to save the selected text to the clipboard.

– or –

Enter text by typing or speaking to replace the selection with what you type.

Pasting Text


To paste previously copied text:

1. Touch the text at the point you want to paste the copied text.

The **Cursor** displays at the point you touched.

2. Touch the **Cursor**.
A pop-up displays.
3. Touch **Paste** in the pop-up.

To paste text directly from the clipboard:

1. Touch the  **Clipboard** key to display the text saved to the clipboard.
2. Touch a text block to paste that text where the **Cursor** is positioned.

Closing the Keyboard

To close the keyboard:



- Touch  **Close Keyboard**.

Using the Handwriting Feature

You can enter text simply by using your finger or the S Pen to handwrite letters on your screen.

1. From a screen where you can enter text, activate the keyboard by touching a text input field on the screen.
2. If necessary, touch  **Set up input methods** in the Status bar and then touch **Samsung keyboard**.

The Samsung keyboard displays.

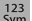


3. Touch and hold  on the keyboard and then select  from the pop-up menu.

The handwriting pad displays.

4. Use your finger tip or the S Pen to write out each character. You can print or use cursive.



As you write, suggestions are offered in the word options area in case the correct letters were not recognized.

Handwriting Tips

- For uppercase letters, write the letter larger than the lowercase letters.
- Write a dash (horizontal line) to add a space.
- Delete words by sweeping backward across them.
- To display numbers and symbols, touch  and then touch a number or symbol key. Touch the button marked 1/2 or 2/2 to see more symbols and emoticons. Touch  to exit the numbers and symbols keyboard.
- To return to the Samsung keyboard, touch .

Handwriting Settings

To change the Handwriting settings:

1. Touch  and then touch **Set up input methods**.
The Language and input settings screen displays.
2. Touch  next to Samsung keyboard to display Samsung keyboard settings.
3. Touch **Handwriting**.


For more information, refer to “*Samsung Keyboard Settings*” on page 140.

4. Press  repeatedly to return to your message.


Using Google Voice Typing

You can use your voice to enter text using the Google voice typing feature.

While entering text:

1. Touch  **Set up input methods** in the Status Bar and then touch **Google voice typing** in the Set up input methods pop-up.

– or –

Touch  on the keyboard.

For more information, refer to “*Keyboards and Input Methods*” on page 140.

2. At the **Speak now** prompt, speak clearly and distinctly into the microphone.

The software converts your voice to text, which is displayed in the message.

3. Keep speaking to add more text.
4. Touch **Done** to display the Samsung keyboard.


Entering Text Using Swype

Swype™ is a text input method that allows you to enter a word by sliding your finger or stylus from letter to letter, lifting your finger between words. Swype uses error correcting algorithms and a language model to predict the next word. Swype also includes a tapping predictive text system.

Enabling and Configuring Swype

The Samsung keyboard is the default text input method, so to use Swype, you must first change the default keyboard setting.

To enable Swype:

1. From a screen where you can enter text, touch and drag  down from the Notifications area then tap **Select input method**.
2. Tap the **Swype** radio button. It will turn green. The Swype keyboard is displayed.
3. Draw a path through the letters with your finger or S Pen rather than tapping each key.

Swype Settings

- Touch and hold  on the bottom of the Swype keyboard to display the Swype settings.

For information on how you can configure your Swype settings, see “*Swype Keyboard Settings*” on page 142.

Swype Text Entry Tips

You can access the SwypeTips application and watch a video or tutorial on using Swype. You can also use the following Swype text entry tips.

- Create a squiggle (like an S shape) to create a double letter (such as pp in apple).
- Touch and hold a key to view the punctuation menu then make a selection.
- Move your finger or stylus over the apostrophe to enter contractions.
- Double-tap on the word you want to change to correct a misspelled word, then tap the delete key to erase one character. Touch and hold the delete key to erase an entire word.

Section 5: Messaging

This section describes how to send and receive messages and other features associated with messaging.

Types of Messages

Your device supports these types of messages:

- **Gmail:** Send and receive Gmail from your Google account.
- **Email:** Send and receive email from your email accounts, including Corporate Exchange mail.
- **Google Talk:** Chat with other Google Talk users.
- **Google Messenger:** Use Google Messenger to bring groups of friends together into a simple group conversation.
- **ChatON:** Use ChatON to send and receive instant messages from any device that has a mobile phone number.

Gmail


Send and receive email with Gmail, Google's web-based email.





Tip: To set up your Google account on your device, use **Accounts** settings. For more information, refer to "Accounts" on page 146.

- From a Home screen, touch  **Apps** →  **Gmail**.

Setting Up Your Gmail Account


If you did not set up a Google account during the initial configuration, the first time you launch Gmail, your device prompts you to set up your Google account.

Note: You can use more than one Google account on your device. To add another account, touch  **Menu** → **Settings** → **ADD ACCOUNT**.

1. From a Home screen, touch  **Apps** →  **Gmail**. The Add a Google Account screen displays.
2. Touch **Existing** to sign in to an existing account.
 - At the **Sign in** screen, use the on-screen keyboard to enter your Google **Email** name and **Password**, then touch  .
 - or –
 - Touch **New** to create a new account.
 - At the **Your name** screen, enter your first and last name, and touch  .


- At the **Choose username** follow the prompts to create a new account.

The Backup and restore screen displays.

3. Read the backup and restore information, touch the option to enable or disable it, and then touch .
4. The device communicates with the Google server to set up your account and synchronize your email. When complete, your Gmail displays in the Inbox.




Refreshing Your Gmail Account

Refresh your account to update your device from the Gmail servers.

1. From a Home screen, touch  **Apps** →  **Gmail**.
2. Touch  **Refresh** in the Application Bar.

Managing Your Gmail Account



Use menu options to manage your Gmail account.

1. From a Home screen, touch  **Apps** →  **Gmail**.
2. Touch  **Menu** for these options:
 - **Manage labels:** Determine settings for each label.
 - **Settings:** Configure settings. For more information, refer to “*Gmail Account Settings*” on page 52.

- **Send Feedback:** Fill out a Google feedback form.
- **Help:** Learn about using Gmail.

Managing Your Gmail Conversations

In addition to managing your Gmail account, there are options for changing the status of one or more Gmail conversations in an account.




1. From a Home screen, touch  **Apps** →  **Gmail**.
2. Touch the gray box to the left of one or more conversations and then choose one of the following options:

- **Archive** : Archive the selected conversation. Archived conversations are moved to the Archive folder.
- **Delete** : Delete the conversations. Deleted conversations are moved to the Trash folder.
- **Change labels** : Relocate the conversations to the **Inbox**, **Personal**, **Receipts**, **Travel**, or **Work** folder and then touch **OK**.
- **Mark as Read**  / **Mark as Unread** : Mark the conversations as read or unread. Once a conversation is marked as read, it has a gray background. Touch  **DONE** to remove the check marks.

Tip: To move a conversation to another folder, touch and drag it to the folder tab.

3. Touch  **Menu** for these options:
- **Add star / Remove star:** Mark (or unmark) conversations with a yellow star. Starred conversations are listed in the Starred folder.
 - **Mark important / Mark not important:** Change the importance indicator . Yellow indicates important.
 - **Mute:** New messages added to muted conversations bypass your inbox so that the conversation stays archived in the All Mail folder.
 - **Report spam:** Report the conversations as spam, which are emails that violate the Gmail Program Policies and/or Terms of Use.
 - **Report phishing:** Report the conversations as potential phishing to acquire information such as usernames, passwords and any other sensitive content.




Composing and Sending Gmail

1. From a Home screen, touch  **Apps** →  **Gmail**.
2. Touch  **Compose**.
3. Touch the **To** field to enter recipients. As you enter names or email addresses, matching contacts display. Touch a contact to add it to the field.
4. Touch the **Subject** field to enter a subject.
5. Touch **Compose email** to enter the text of your email.
6. While composing a message, the following options are displayed:
 - **+ CC/BCC:** Create Cc (copy) and Bcc (blind copy) fields in the message. After creating the fields, touch to enter recipients.
 -  **Attach:** Launch Gallery to select a photo to add to the message.
7. Touch  **Menu** for the following options:
 - **Save draft:** Touch **Save draft** to save a draft of this message.
 - **Attach video:** Touch a video from your Gallery.
 - **Discard:** Touch Discard to delete the message.
 - **Settings:** Configure settings. For more information, refer to “*Gmail Account Settings*” on page 52.

- **Send feedback:** Fill out a Google feedback form.
- **Help:** Learn about using Gmail.

8. Touch **SEND** to send this message


Gmail Account Settings

1. From a Home screen, touch  **Apps** →  **Gmail**.
2. Touch  **Menu** → **Settings** to access your gmail settings.

Email

Use Email to view and manage all your email accounts in one application.

Setting up Email Accounts


1. From a Home screen, touch  **Email**.
2. At the **Set up email** screen, enter an **Email address** and **Password**, then touch **Next**.
3. Your account's incoming server settings are different depending on the kind of email service for the account. If you are asked **What type of account?**, touch the type of account: **POP3 account**, **IMAP account**, or **Microsoft Exchange ActiveSync**.
4. If you are setting up a Microsoft Exchange ActiveSync account, tap **Manual setup** at the top of your screen.

The Server settings screen displays.

5. Enter the required settings and touch **Next**. The **Account options** screen is displayed.
6. Enter the desired information in the different fields, then tap **Next**.



Note: For Microsoft Exchange ActiveSync accounts, the **Activate device administrator?** screen may appear. Read the information and touch **Activate** to continue.

7. Enter an account name for the email account just added, which is displayed on the email screen, and enter Your name, if required.
8. Touch **Done**.
The device communicates with the appropriate server to set up your account and synchronize your email. When complete, your email appears in the Inbox for the account.

Note: To configure email account settings at any time, use  **Menu** → **Settings**. Touch the account to display Account settings.



Adding Additional Email Accounts

To add additional email accounts:

1. From a Home screen, touch  **Email**.
2. Touch  **Menu** → **Settings** → **Add account**.
3. Enter the **Email address**, **Password**, and so on.

Managing Your Email Accounts

You can view email you receive for all accounts in the **Combined view** screen or you can view email accounts individually.

1. From a Home screen, touch  **Email**.
2. Touch the  drop-down menu at the top left of the screen to select:
 - **Combined view**: View all email in a combined inbox.
 - **Priority sender inbox**: Use this setting to assign an email account for all outgoing emails.
 - **<Account Name>**: View email for the account.

Managing Your Email Conversations




In addition to managing your Email account, there are options for changing the status of one or more Email conversations in an account.

1. From a Home screen, touch  **Email**.

2. Touch the box to the left of one or more conversations and then choose one of the following options:
 - **Flagged**  / **Mark as complete**  / **Unflag**  : Flag an email as important. Touch Mark as complete to add a checkmark to an email. Touch Unflag to remove the flag.
 - **Mark as Read**  / **Mark as Unread**  : Mark the conversations as read or unread. Once a conversation is marked as read, it has a gray background.
 - **Move to**  : Relocate the conversations to another folder in the current email account or in a folder within another email account.
 - **Delete**  : Delete the conversations.
3. Touch  **Menu** for these options:
 - **Sort by**: Choose a method for listing your email conversations.
 - **View mode**: Choose how to view your email conversations. Choices are: Standard view and Conversations view.
 - **Create folder**: Create a new main folder or touch an existing folder to create a sub-folder.
 - **Delete all**: Delete all items for this email account.
 - **Font size**: Select the font size for your email. Choose from, Use device font sizes, Tiny, Small, Normal, Large, or Huge.

- **Settings:** Display the settings for this email account.

Composing and Sending Email

1. From a Home screen, touch  **Email**.
2. Touch an account, if you have more than one account set up, then touch  **Compose**.
3. Enter the recipient's email address in the **To** field.
 - If you are sending the email message to several recipients, separate the email addresses with a comma. You can add as many message recipients as you want.
 - Touch  to add a contact to the field.
 - Touch **+Cc/Bcc** to add additional carbon copy recipients.
 - Use the **Cc** field to carbon copy additional recipients.
 - Use the **Bcc** field to blind copy additional recipients.
 - Touch **+Me** to add yourself as a recipient.
4. Touch the **Subject** field to enter a subject.
5. Touch the body of the email to enter the text of your email.

6. While composing a message, the following options may be displayed:



Scheduling options: Tap the Schedule sending box and then set the Time and date for which the email will be sent.



Priority: Set the email priority. Options are: High, Normal, or Low.



Attach: Choose an attachment to add to the message from the listed apps, such as My Files, Images, Take picture, Video, Record video, Audio, S Note, Calendar, Contacts, and Location.



Undo: Erase the previous input.



Redo: Restore the previously erased input.



Insert: Choose an item to insert into the message from the listed apps, such as Images, S Note, Calendar, Contacts, and Location.



Insert quick response: Insert text that you frequently use in emails.

9px

Font size: Choose a text font size of 9, 10, 12, 14, 17, 21, 24, 28, or 36 points.

B

Bold: Bold the following text. Touch again to turn off bold.

I




Italics: This action italicizes the subsequent entered text.

T

Font color: Set the color of the text font. The bar changes to the selected color.



T

Background color: Set the color of the background of the email.

7. Touch  **Save** to save the email to the Drafts folder,  **Send** to send the email, or  **Discard** to delete the email.

Email Settings

Account settings lets you configure handling of email on your device.



1. From a Home screen, touch  **Email**.
2. Touch  **Menu** → **Settings** to modify your email settings.

Google Talk

Talk is Google's instant messaging and audio and video chat service. You can use it to communicate, in real time, with other people who also use Google Talk on another Android tablet or phone or on a computer.

Tip: Talk requires that you have a Google account. To set up your Google account on your device use **Accounts** settings. For more information, refer to “*Accounts*” on page 146.

Open Talk and Sign In

1. From a Home screen, touch  **Apps** →  **Talk**.
If you are not signed in to a Google account, the Add a Google Account screen displays.
2. Touch **Existing**, if you already have a Google account, or **New** to create a Google account.
For more information, refer to “*Setting Up Your Gmail Account*” on page 49.

Note: If you have already set up your Google account, you are automatically logged in. Just touch the account.

Once sign in is complete, the Talk main screen displays.

Invite a Friend to Chat


You can invite anyone with a Google Account to become your friend in Google Talk, so you can chat with each other and view each other's online status.

1. While viewing your Friends list, touch  **Add friend**.
2. Enter your friend's Email address and touch **DONE**.

Your friend's address in Talk is a Gmail or other email address that is configured to connect to Google Talk.

If your friend accepts your invitation, they are added to your Friends list in Talk and you can share each others status in Talk and other applications.

View and Accept an Invitation to Become a Friend

When a contact invites you to become a friend in Google Talk, you receive a  notification in the System Bar and the invitation displays in your Friends list.






1. Touch the invitation.

2. Touch **Accept**, if you want to accept the invitation and chat, **Decline**, if you do not want to chat with and share your Google Talk status with the sender right now, or **Block**, if you do not want to receive any more invitations from that person.


If you touch **Accept**, the friend is added to your Friends list in Talk and you can share your status in Talk and other applications.

Options While Chatting

There are several options that are available while you are chatting.

1. Touch  to search your chats for a word,  to invite another friend to chat,  to invite this friend to video chat, or  to invite this friend to voice chat.
2. Touch  **Menu** to display the following options, which are available while chatting. For more information, refer to *"Additional Talk Options"* on page 57.
 - **End chat**: End this chat session.
 - **Go off the record/Stop chatting off the record**: Set whether you want to stop saving your chat to the chat history.

- **Friend info:** Display information about the friend with which you are chatting. The following options are also displayed:
 - **Block:** Keeps this person from sending you messages and removes the person from your Friends list.
 - **Remove:** Remove the friend as if you never accepted their invitation. However, the friend is not blocked.
- **Add to chat:** Choose another friend to invite to this conversation.
- **Clear chat history:** Remove the history of this chat from your device.
- **Settings:** Offers various settings for Google talk. For more information, refer to “*Google Talk Settings*” on page 58.
- **Help:** Displays additional help information.
- **Send feedback:** Fill out a Google feedback form.


Note: If you touch the **REMOVE** option, touch  **Add friend** → **Send chat invitation to**, to make the Friend visible again.

Additional Talk Options

1. While viewing your Friends list, touch  to search your Talk messages. Use the on-screen keyboard to enter a search term. Touch  on the keyboard to search your Talk messages.
2. Touch  **Menu** to display the following options:
 - **Display options:** To set the way your friends list is sorted, touch **Availability**, **Name**, or **Recency**.
 - **End all chats:** End all chats in which you are engaged.
 - **Sign out:** Sign out of Google Talk and display the Talk main screen.
 - **Settings:** Offers various settings for Google talk. For more information, refer to “*Google Talk Settings*” on page 58.
 - **Help:** Displays additional help information.
 - **Send feedback:** Fill out a Google feedback form.
3. Touch a Friend’s entry to display the Chat entries for that Friend.

Google Talk Settings

Use Google Talk Settings to configure your Talk account. If you have more than one account, each maintains its own Talk settings.

1. From a Home screen, touch  **Apps** →  **Talk**.
2. Touch  **Menu** → **Settings**, then touch an account for options:

GENERAL

- **Mobile indicator:** Check and your friends see an outline of an android next to your name in their Friends list when you are signed into Google Talk on a tablet or phone.
- **Away when screen off:** Check to change your Talk status to Away when your screen turns off. When unchecked, your status is not changed.
- **Invitation notifications:** Show notification when a friend invitation arrives.

CHAT NOTIFICATIONS

- **IM notifications:** Set whether to open a dialog, display a notification in the System Bar, or neither, when you receive a text chat.

- **Notification ringtone:** Set a ringtone to sound, or silent, when you receive a text chat.
- **Vibrate:** Set how vibrate functions. Choices are: Always, Only when silent, or Never.

VOICE & VIDEO CHAT

- **Video chat notifications:** Set whether to open a dialog or display a notification in the System Bar when you are invited to a video chat.
- **Video chat ringtone:** Set a ringtone to sound, or silent, when you receive an invitation to a video chat.
- **Vibrate:** Set a the device to vibrate Always, Only when silent, or Never.
- **Default video effect:** Set the video image stabilization.

ACCOUNT

- **Blocked friends:** Displays a list of friends you have blocked. Touch a blocked friend and then touch OK to unblock the friend.
- **Clear search history:** Erases your search history. No previous searches are shown until you search for new words.
- **Manage account:** Opens the Accounts and sync settings. For more information, refer to “*Accounts*” on page 146.

ABOUT




- **Terms & privacy:** Displays the Google Talk terms of use and privacy policies.

Google+

Share updates and see what is going on around you with Google+ for mobile.

- Share your thoughts and location.
- Instantly upload your photos and videos as you take them.
- Get updates from your circles in the stream.
- Check in to a place.
- Make plans on-the-go with group messaging.
- View posts from people around you.



To get started:

1. From a Home screen, touch  **Apps**
→  **Google+.**
The Google+ home screen displays.
2. Touch  **Menu** → **Help** and then touch a topic to learn more about using Google+.

Messenger

With Google Messenger, you can bring groups of friends together into a simple group conversation, putting everyone on the same page. When you get a new conversation in Messenger, Google+ sends an update to your device.

To get started, touch the Messenger icon on the home screen of the Google+ app or use the Messenger icon on your Applications screen.

1. From a Home screen, touch  **Apps**
→  **Messenger.**
The Messenger screen displays.

2. Touch  **Menu** → **Help** for more information on getting started.

ChatON

Provides a global mobile communication service where you can chat with more than 2 buddies via a group chat. Share things such as pictures, videos, animation messages (Scribbles), audio, Contacts, Calendar entries, and Location information.


For more information, visit: <https://web.samsungchaton.com>.

1. From a Home screen, touch  **Apps** →  **ChatON.**

2. At the ChatON display, tap **Sign in** to sign in to your Samsung account if you have not already done so. For more information, refer to “*Creating a Samsung Account*” on page 11.

– or –

Tap **Skip** if you have already signed in to your Samsung account.

3. Enter your real name and tap  **OK**.
4. Follow the on-screen instructions to add a buddy and begin your chat session.

DRAFT
For Internal Use Only


Section 6: Music

This section explains how to use the music features of your device including the Music app, the Music Player, and the Music Hub.

Listening to Music




You can listen to music by using your device's built-in speakers, through a wired headset, or through a wireless Bluetooth stereo headset.

For more information, refer to “Bluetooth” on page 87.

Press the **Volume Key**  on the side of the device to activate on-screen volume control, then touch and drag on the scale to set volume. You can also press the Volume Key to adjust playback volume.

Google Play Music



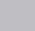

Google Play Music is a new service from Google that gives you instant access to your personal music collection on the Internet and your compatible Android devices without the hassle of wires or syncing. For more information, visit music.google.com.

1. From the Home screen, tap  → **Play Music** . All music on your device and external SD card is displayed including Music folders that may contain multiple songs.
2. Tap a song to start playback.
3. From the main Play Music screen, you can tap any of the following tabs for a more detailed listing of songs: Playlists, Recent, Artists, Albums, Songs, and Genres.
4. Tap  **Menu** for the following options:
 - **Shuffle all:** allows you to play all of your music in a shuffled order.
 - **Settings:** allows you to view Open source licenses and the music version for the Play Music application.
 - **Help:** allows you to view a help file on the Google Support website.

Music Hub


The Music Hub app lets you upload your music collection to the cloud, stream and purchase songs from an extensive catalog, and listen to personal radio.

Note: You must sign up for an account before accessing some of the Music Hub options.


1. Sign on to your Samsung account if you have not already done so.
2. From the Home screen, tap  → **Music Hub** .
3. Tap **Start**.
4. The first time you access Music Hub, you are given a free 7-day trial. Tap **OK** to continue.
5. Follow the on-screen instructions to use Music Hub.
6. Tap  (**Search**) and use the keyboard to enter a key word or phrase to search for tracks, albums, or artists.
7. Press  **Menu** for additional options.

Music Player

Music Player plays songs stored on your tablet or an installed memory card.




1. From a Home screen, touch  **Apps**
→  **Music Player**.

The Music Player application searches your device's internal storage or on an installed memory card for music and playlists. This can take from a few seconds to several minutes, depending on the amount of new music added since you last opened the application. It then displays your music in several ways.

2. Touch a tab, such as **Songs**, **Playlists**, **Albums**, and so on, to change the way you view the contents of your library.
3. Touch the Music application icon  at the top-left of the Application bar to return to the previous Music screen.




Searching for Music

To find music in your library:

1. From a Home screen, touch  **Apps**
→  **Music Player.**
2. Touch  **Search** and use the keyboard to type the name of an artist, album, or song.

Music Player Options and Settings

To use Music Player options and configure settings:

1. From a Home screen, touch  **Apps**
→  **Music Player.**
2. Touch  **Menu** to display the following options:
 - **Go to Music Hub** This option allows you to enjoy all your music in one place. Choose from All Your Music, Unlimited Streaming, or Personal Radio. Follow on-screen instructions to access or setup your Samsung account.
 - **Delete:** Delete a song, an album, or every song or album.
 - **Share via:** Share your music. Select the songs you want to share, touch **Share**, touch an option, such as Bluetooth, and follow the on-screen instructions.

- **Set as alarm tone:** Choose a song and touch **Set** to use the song as an alarm tone.
- **Scan for nearby devices:** Discover and connect directly to nearby devices.

- **Settings:** The following settings display:


Advanced

— **Sound settings:** Choose **SoundAlive** and **Play speed** settings.

— **Lyrics:** Display the lyrics of the song, if available.

— **Music auto off:** Set the option Off or set your music to turn off automatically by touching one of the time values.

Music menu

— **Music menu:** Enable or disable the music display options that appear on the main music screen. A check mark  next to an option means that it is enabled.

- **End:** This option returns you to the home screen.

Managing Playlists

To create, manage, or delete a playlist:

- From a Home screen, touch  **Apps**
→  **Music Player**.

Creating a Playlist

- Touch  **Add to playlist** → **Create playlist** and use the keyboard to enter a name for the playlist.

Renaming a Playlist

- Touch the **Playlists** tab.
- Touch a playlist, touch  **Menu** → **Rename playlist** and use the keyboard to enter a new name for the playlist.


Adding Songs to Playlists

- Touch  **Add to playlist** and touch a playlist.
– or –



Touch **Playlists**, touch a playlist, and then touch

 **Add music** or  **Menu** → **Add music** in portrait mode.




All songs are displayed.

- Touch  next to each song you want to add or next to **Add all** to add all songs to the playlist.
- Touch **Done** to save the playlist.

Removing Songs from Playlists

- Touch  **Add to playlist** and touch a playlist.
- Touch  to remove a song from the playlist.
- Touch **Done** to save the playlist.


Changing the Order of a Playlist

- Touch the **Playlists** tab and touch a playlist.
- Touch  **Change order** or  **Menu** → **Change order** in portrait mode.
- Touch the grid  for an entry and drag the entry to a new position in the list.
- Touch **Done** to change the order and save the playlist.

Playing a Playlist



- Touch the **Playlists** tab.
- Touch **Favorites**, **Most played**, or **Recently added**, or touch a playlist title that you created.
- Touch a song to start playing the playlist at that song.

Deleting a Playlist


1. Touch the **Playlists** tab and touch a playlist.
2. Touch  **Delete** in the Application bar.
3. Touch the box next to a playlist title, touch **Remove**, and then touch **OK**.

Playing Music


To play a song:

1. From a Home screen, touch  **Apps**
→  **Music Player**.
2. Touch a song or touch an album or genre and then touch a song in the list of songs on the album.
The song you touch starts to play. The tracks in the current list play in order until you reach the end of the list (unless you choose a repeat option). Otherwise, playback stops only if you stop it, even when you switch applications.

Accessing the Music Player



If you navigate away from the Music Player application and music is playing, the Music notification icon  is displayed in the System Bar.

You can change songs or easily return to the Music Player:

1. Touch the Music notification icon  in the System Bar.
The Status Details pop-up displays.
2. Touch the song title to display the Music Player. You can also pause and resume playback and skip to the next or previous song in the panel. For more information, refer to “*Notifications*” on page 23.

Music Player Controls

When a song is playing, the Music Player screen displays and various controls are available.

1. From a Home screen, touch  **Apps**
→  **Music Player**.
2. Touch a song or playlist to begin playback.
The music player displays below (portrait mode) or to the right (landscape mode) of the music listing.
3. Touch the music player to enlarge it and touch the screen to display the sound and playlist controls.




4. During playback, use the sound and playlist controls:

- **Favorite:** Touch the star ★ to mark the current song as a favorite.

- **Volume:** Touch to toggle Silent and Sound mode, then touch and drag on the scale to set volume. You can also press the Volume Key on the side of the device to adjust playback volume.
- **SoundAlive:** Touch to view and set SoundAlive options.
- **Info:** Touch to view information about the current song.
- **List Mode:** Touch to switch to the list of songs.
- **Shuffle:** When enabled, songs play in random order. When disabled, songs play in the order they appear in List view.
- **Progress Bar:** Touch and drag the end of the progress bar to scan forward or backward through the current song.
- **Playback Controls:** These buttons control the playback of songs:
 - Touch to advance to the next song. Touch and hold to scan forward through the current song.
 - Touch to go back to the previous song. Touch and hold to scan backward through the current song.
 - Touch to pause playback. Touch to resume playback.
- **Repeat:** Touch to repeat the current song, repeat all songs, or disable repeat mode.

Options While Playing a Song

There are various options and controls available while a song is playing:

1. From a Home screen, touch  **Apps**
→  **Music Player**, touch a song or an album, and then a song.
2. Touch the music player to enlarge it.
3. Touch  **Menu** to display the following options:
 - **Add to playlist:** Add the song to a new playlist or an existing playlist.
 - **Via Bluetooth:** Play the current song by using a Bluetooth device.
 - **Share via:** Share your music. Touch an option, such as Bluetooth, select the songs you want to share, and touch **Share**.
 - **Set as alarm tone:** Use the current song as an alarm tone.
 - **Scan for nearby devices:** Discover and connect directly to nearby devices.
 - **Settings:** Displays Music Player settings. For more information, refer to *“Music Player Options and Settings”* on page 63.

- **End:** This option returns you to the home screen.

Section 7: Photos and Video

This section explains how to use your device's built-in camera and camcorder, the Video Player app to view and manage videos, and the Gallery app to view, capture, and manage photos and videos. It also contains an overview of the PS Touch app, Media Hub, and Video editor apps.

Camera

Use your device's built-in camera and camcorder to take photos and record videos.

1. From a Home screen, touch  **Apps** →  **Camera**.

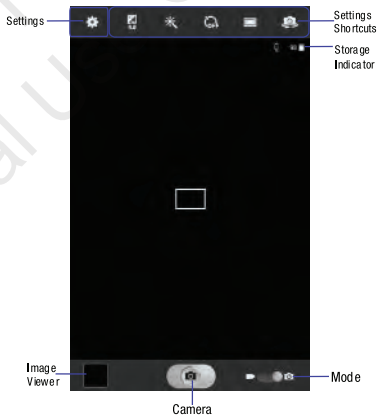
If a memory card is inserted, the Storage location pop-up displays.

2. Touch **OK** to change the storage location to memory card.
– or –

Touch **Cancel** to use the device storage for storing pictures and videos.



Note: If memory card storage is used, photos are stored in the /storage/sdcard0/DCIM/Camera folder as jpg files. For more information, refer to “My Files” on page 107.

The Camera screen displays.




Taking Photos

To take a photo:

1. From a Home screen, touch  **Apps** →  **Camera**.
2. Using the display as a viewfinder, compose your photo by aiming the lens at the subject.

To configure settings, see “*Camera Settings*” on page 69.

3. To take the photo, touch the **Camera** button.
4. Touch  **Back** to leave the Camera and display the previous screen.

Important! Do not take photos of people without their permission.

Do not take photos in places where cameras are not allowed.

Do not take photos in places where you may interfere with another person’s privacy.

Camera Settings

Before you start taking photos, use the camera settings to configure the camera for best results. Camera settings are represented by icons on the left side of the screen.

Editing Camera Settings Shortcuts

The first five icons are actually shortcuts to camera settings. These five shortcuts can be customized to fit your preference.



Self-portrait,



Shooting mode,



Timer



Effects, and



Exposure value are default settings shortcuts.

To customize these shortcuts:


1. Touch  **Settings** → **Edit shortcuts**.
– or –

Touch and hold any of the shortcut icons to edit them.

2. Touch and hold a setting, then drag and drop it on one of the five settings shortcuts to the left. The replaced setting shortcut displays in the edit list.

Configuring Camera Settings

To configure Camera settings:

- While in Camera mode, touch a settings shortcut or touch  **Settings** to configure the following camera settings:
 - **Edit shortcuts:** Customize your settings shortcuts. For more information, refer to “*Editing Camera Settings Shortcuts*” on page 69.
 - **Use the volume key as:** Press the volume key to zoom in or zoom out, or to capture the picture.
 - **GPS tag:** Touch to switch the GPS tag on or off.
 - **Self-portrait:** Touch to switch to the front-facing camera lens and take a photo of yourself.

Warning! If the battery is low, the flash is not available. For more information, refer to “*Charging the Battery*” on page 7.

- **Shooting mode:** Choose an automatic shooting mode, from:
 - **Single shot:** Take a single photo.

- **Panorama:** Touch the Camera button to take a photo, then use the on-screen guideline to move the viewfinder and take the next 7 shots automatically.
- **Share shot:** Share photos with other users via Wi-Fi Direct. A Wi-Fi Direct connection is required.
- **Buddy photo share:** Take and share photos with friends via face detection.
- **Smile shot:** Touch the Camera button to automatically focus on the subject’s face and take the photo.
- **Cartoon:** Take a photo with cartoon effects.
- **Effects:** Apply an effect to photos.
- **Scene mode:** Choose a mode to match the kind of pictures you want to take.
- **Exposure value:** Use the slider to set the exposure value from -2.0 to +2.0.
- **Focus mode:** Set the focus mode to Auto focus or Macro.
- **Timer:** Set a delay time to wait between touching the Camera button and taking a photo.
- **Resolution:** Choose a size for the photo.
- **White balance:** Set the light source.

- **ISO:** This value determines how sensitive the light meter is on your digital camera. Use a lower ISO number to make your camera less sensitive to light, a higher ISO number to take photos with less light, or Auto to let the camera automatically adjust the ISO for each of your shots.
- **Metering:** Select a method for measuring light.
- **Outdoor visibility:** When taking outdoor shots in bright settings, enabling Outdoor visibility illuminates your screen to make it easier to see what you are shooting.


Note: What you see on screen will not correspond to the luminance of the actual photograph taken.




- **Guidelines:** Enable or disable an on-screen grid to aid in photo composition.
- **Contextual filenames:** Enable or disable a system generated filename.
- **Taking photos using voice:** Enable or disable an voice command to take a photo.
- **Save as flipped:** Set self-portrait mode and set this option to **On** to take and save a mirror-image photo.
- **Image quality:** Choose a quality setting for photos.

- **Storage:** Set whether to store you photos on your device or on your memory card, if one is installed.
- **Reset:** Set all Camera settings to the defaults.

Viewing Photos with the Image Viewer


After taking a photo, use the Image Viewer to view, share, delete, or edit photos.

1. Touch **Image Viewer** to view the photo.
2. Touch the screen to show or hide Image Viewer options.
3. Touch the screen with two fingers or double-tap on the screen to zoom all the way in or out. For more information, refer to “Pinch” on page 20.
4. Sweep across the screen to display the next or previous photo. The current photo is outlined in the thumbnails at the bottom of the screen. Touch a thumbnail to view the photo it represents.
5. To set the photo as a favorite, touch **★ Favorites**.
6. Touch  **Share** to share the photo. Touch an option, such as Bluetooth, and follow the on-screen instructions. After using this option, the most recent Share option is displayed in the Application Bar.

- To delete the photo being displayed, touch  **Delete** and then touch **Delete** to delete the photo or **Cancel** to exit.
- Touch  **Slideshow** to display a slide show of the available pictures and videos.
- Touch  **Menu** to select **Set as** to assign the photo as a Contact photo or a Home screen, Lock screen, or Home and lock screens wallpaper.





For more information, refer to “*Viewing Photos and Videos*” on page 78.

Note: Photos are stored in the /storage/sdcard0/DCIM/Camera folder as jpg files. For more information, refer to “*My Files*” on page 107.

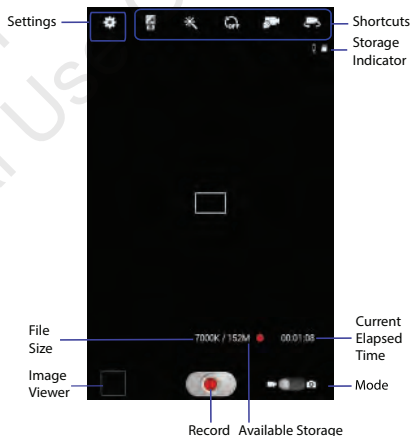
- Press  **Back** to return to the Camera to take more photos.

Camcorder









Use your device’s built-in Camcorder to record high-definition video in 1080p resolution.

- From a Home screen, touch  **Apps** →  **Camera**.
- Slide the  **Mode** button to the  **Camcorder** setting.

The Camcorder screen displays.



Recording Videos

1. From a Home screen, touch  **Apps** →  **Camera**.
2. Slide the  **Mode** button to the  **Camcorder** setting.
3. Using the display as a viewfinder, compose your shot by aiming the lens at the subject.
To configure settings, see “*Camcorder Settings*” on page 73.
4. To start recording, touch  **Record**.
During recording, the **Record** button flashes.
5. To pause recording, touch  **Pause**.
6. To stop recording, touch  **Stop**.
7. Touch  **Back** to leave the Camcorder and display the previous screen.






Important! Do not take videos of people without their permission.
Do not take videos in places where cameras are not allowed.
Do not take videos in places where you may interfere with another person’s privacy.

Camcorder Settings

Before you start taking videos, use the camcorder settings to configure the camcorder for best results. Camcorder settings are represented by icons on the left side of the screen.

Editing Camcorder Settings Shortcuts


As with the camera, the first five icons are actually shortcuts to camcorder settings. These five shortcuts can be customized to fit your preference.

 **Self-recording**,  **Recording mode**,  **Timer**,  **Effects**, and  **Exposure value** are default settings shortcuts.

To customize these shortcuts, see “*Editing Camera Settings Shortcuts*” on page 69.

Configuring Camcorder Settings

To configure Camcorder settings:

- While in Camcorder mode, touch a settings shortcut or touch  **Settings** to configure the following Camcorder settings:
 - **Edit shortcuts:** Customize your settings shortcuts. For more information, refer to “*Editing Camera Settings Shortcuts*” on page 69.

- **Use the volume key as:** Press the volume key to zoom in or zoom out.
- **GPS tag:** Touch to switch the GPS tag on or off.
- **Self-recording:** Touch to switch to the front-facing camera lens and record a video of yourself.
- **Recording mode:** Set a recording mode. Options are: Normal and Limit for email, which limits the size of the video to 50 megabytes.
- **Effects:** Apply an effect to videos.
- **Exposure value:** Use the slider to set the exposure value from -2.0 to +2.0.
- **Timer:** Set a delay to wait between touching Record and starting recording.
- **Resolution:** Set a size for the video.
- **White balance:** Set the light source.
- **Outdoor visibility:** When recording outdoors in bright settings, enabling Outdoor visibility illuminates your screen to make it easier to see what you are recording.




Note: What you see on screen will not correspond to the luminance of the actual video taken.

- **Guidelines:** Enable or disable an on-screen grid to aid in video composition.
- **Contextual filename:** Enter the file with an applicable name.
- **Save as flipped:** Set self-recording mode and set this option to **On** to take and save a mirror-image video.
- **Video quality:** Choose a quality setting for videos.
- **Storage:** Set whether to store your videos on your device or on your memory card.
- **Reset:** Set all Camera settings to the defaults.






Viewing Videos with the Image Viewer



After recording a video, use the Image Viewer to play, share, or delete your video.




1. Touch **Image Viewer** to view the video.
2. Touch the screen to show or hide Image Viewer options.
3. Sweep across the screen to display the next or previous video. The current video is outlined in the thumbnails at the bottom of the screen. Touch a thumbnail to view the video it represents.
4. To set the video as a favorite, touch **★ Favorites**.

5. Touch  **Share** to share the video. Touch an option, such as Bluetooth, and follow the on-screen instructions. After using this option, the most recent Share option is displayed in the Application Bar.
6. Touch  **Slideshow** to display a slide show of the available pictures and videos.
7. To delete the video being displayed, touch  **Delete**.

Note: Videos are stored in the /storage/sdcard0/DCIM/Camera folder as mp4 files. For more information, refer to “My Files” on page 107.


8. To play a video, touch  **Play**. Touch  **Pause** to pause the video and touch  **Resume** to resume playing the video.
9. Touch  **SoundAlive** to set the sound quality.
10. Touch and drag the  white dot on the progress bar to fast forward or rewind the video. Touch the left end of the progress bar to restart the video. Touch the right end of the progress bar to end the video playback.
– or –





Touch  **Rewind** to restart the video or  **Fast Forward** to end the video.

11. Touch  **Pop up play** to play a video as a small pop-up while viewing another screen. Touch and drag the pop-up video to the desired location on the screen. Double-tap the pop-up to return to full screen mode.
12. Touch the  **Bookmark** to mark this video.
13. Press  **Back** to return to the Camcorder.

Video Player

Your device's 8.0-inch 1280x800 WXGA TFT (PLS) LCD screen provides playback of videos. Use Video Player to view and manage videos stored on your tablet.

1. From a Home screen, touch  **Apps** →  **Video Player**.
2. Touch the **Thumbnails**, **List**, or **Folders** tab.
3. Touch  **Search** and use the keyboard to enter a search term. The current folder is searched and results are displayed. Touch **X** to remove the search field.
4. While viewing the list, touch **Menu** for options:
 - **List by:** Display videos by Name (default), Date, Size, or Type.

- **Share via:** Share the video. Touch an option, such as Bluetooth, and follow the on-screen instructions.
 - **Delete:** Touch videos to select them for deletion or touch **Select all** to delete all videos.
 - **Auto play next:** Touch to enable or disable automatic playing of videos in the order they appear.
 - **Scan for nearby devices:** Discover and connect directly to nearby devices.
5. Touch a video to play it. While playing a video, touch the screen to display or hide on-screen playback controls.
 6. Touch the icon in the bottom of the display screen while the video is playing to change the Display Mode from original size to full screen in ratio or full screen.
 7. Touch  **SoundAlive** to set the sound quality.
 8. Touch  **Pop up play** to play a video as a small pop-up while viewing another screen. Touch and drag the pop-up video to the desired location on the screen. Double-tap the pop-up to return to full screen mode.
 9. While the video is playing, touch  **Bookmark** to mark your favorite areas of the video. A yellow mark displays on the progress bar.
 10. During playback, press  **Menu** for options:
 - **Share via:** Share the video. Touch an option, such as Bluetooth, and follow the on-screen instructions.
 - **Chapter preview:** If chapter information is recorded in the video file, display the chapters. Touch a chapter to begin playing the video at that point.
 - **Edit:** Touch Trim or Video editor (download from Samsung Apps).
 - **Tag buddy:** Assign a name to a person in a photo.
 - **Add weather tag:** Choose from Sunny day, Cloudy day, Rainy day, Snowy day, or Clear night.
 - **Via Bluetooth:** Turn Bluetooth on to use Bluetooth services.
 - **Video auto off:** Set the automated stop for the playing video. Choose from **Off**, **After playing**, **After 15 mins**, **After 30 mins**, **After 1 hour**, **After 1 hour 30 mins**, and **After 2 hours**.
 - **Scan for nearby devices:** Discover and connect directly to nearby devices.

- **Settings:** Touch this option to view the following:
 - **Play speed:** Touch and drag the slider to decrease or increase play speed.
 - **Subtitles:** View subtitles for the video, if available.
 - **Capture:** Turn On or Off the Capture mode.
 - **Color tone:** Set the color tone to Normal, Warm, or Cold.
 - **Outdoor visibility:** Turn outdoor visibility On or Off.
- **Details:** Provides details about the video, such as Name, Size, Resolution, and so on.





For more information, refer to “*Playing Videos*” on page 80.

Gallery





Use Gallery to view, capture, and manage photos and videos.

Note: Photos and videos are stored in the /storage/sdcard0/DCIM/Camera folder, photos as jpg files and videos as mp4 files. For more information, refer to “*My Files*” on page 107.



Selecting Photos and Videos to View







1. From a Home screen, touch  **Apps** →  **Gallery**. All albums display.
2. Choose items to display by making selections from the menus in the Application bar: **Albums**, **Time**, **Locations**, **Person**, **Group**, or **Favorites**.
3. To launch the Camera app, touch  **Camera**.
4. Touch the icon next to Camera to change the way your albums are displayed (**Grid**, **Timeline**, or **Spiral**).
5. Touch  **Menu** to display the following options:
 - **Slideshow:** View a slideshow of the available pictures and videos.
 - **Tag buddy:** Assign a name to a person in a photo.
 - **New album:** Create a new album. Use the keyboard to enter a name for the album.
 - **Hidden Items:** Touch this icon to show items that have been hidden.
 - **View by:** View content from all sources or set a single source, such as in your device.
 - **Select album:** Touch one or more albums or groups that you want to share, share, or delete.
 - **Scan for nearby devices:** Discover and connect directly to nearby devices.

Viewing Groups of Photos and Videos

1. From a Home screen, touch  **Apps** →  **Gallery**.
2. Touch a category and then a group to view it.
Thumbnails for each photo and video in the group display.
3. Touch  **Slideshow** to view a slideshow of the available pictures and videos.
4. Touch  **Menu** for these options:
 - **Select item:** Touch one or more items that you want to share, delete, or use for a slideshow.

Viewing Photos and Videos

1. From a Home screen, touch  **Apps** →  **Gallery**.
2. Touch a category and then a group to view it, and then touch a photo or video thumbnail.
3. Touch the screen to show or hide Gallery options.
4. Touch the screen with two fingers or double-tap on the screen to zoom all the way in or out. For more information, refer to “Pinch” on page 20.

5. Sweep across the screen to display the next or previous photo or video. (Videos are indicated by the  **Play** button.) The current photo or video is outlined in the thumbnails at the bottom of the screen. Touch a thumbnail to view the photo or video it represents.
6. Touch  to assign this photo or video as a Favorite.
7. Touch  **Share** to share the photo or video. Touch an option, such as Bluetooth, and follow the on-screen instructions.
8. Touch the  to choose from Start slideshow and Slideshow settings..
9. To delete the photo or video being displayed, touch  **Delete**.
10. Touch  **Menu** to display the following options for photos:
 - **Face tag:** Set whether to look for a face in this picture.
 - **Tag buddy:** Assign a name to a person in a photo.
 - **Add weather tag:** Choose from Sunny day, Cloudy day, Rainy day, Snowy day, or Clear night.


- **Photo frame:** Add a frame to the selected photo. Press **Save** when completed or **Cancel**.
- **Photo note:** Add a note to a photo.
- **Copy to clipboard:** Copy the current photo to the clipboard.
- **Rotate left:** Allows you to rotate the photo counterclockwise 90 degrees.
- **Rotate right:** Allows you to rotate the photo clockwise 90 degrees.
- **Crop:** Allows you to crop the image. Touch and drag the crop box or the sides or corners of the crop box to create the crop area, then touch **Done**. Touch **X** to stop without cropping the photo.
- **Edit:** Use Photo Editor or Paper Artist to edit your photo.
- **Set as:** Assign the photo as a Contact photo or a Home screen, Lock screen, or Home and lock screens wallpaper.
- **Buddy photo share:** Detect the face in this picture and email that person.
- **Print:** Print the current photo to a Samsung printer.
- **Rename:** Enter an new file name.
- **Scan for nearby devices:** Discover and connect directly to nearby devices.

- **Details:** Provides details about the photo, such as title, time taken, size, and so on.

There is only four options for videos that are not playing:

- **Slideshow:** View a slideshow of photos and video thumbnails in the group. Touch the screen to stop the slideshow and view the photo or video being displayed.
- **Rename:** Enter an new file name.
- **Scan for nearby devices:** Discover and connect directly to nearby devices.
- **Tag buddy:** Assign a name to a person in a photo.
- **Details:** Provides details about the video such as Title, Time, Duration, and so on.


For menu options while a video is playing and other video options, see “*Video Player*” on page 75.

11. Touch  **Back** to return to the category screen.

Setting a Picture As

You can use the photos you take as a contact’s photo or as wallpaper for the Home or Lock screen:

1. From a Home screen, touch  **Apps** →  **Gallery**.

2. Touch a category and then a group to view it, and then touch a photo to select it.
3. Touch  **Menu** → **Set as**.
4. Touch **Contact photo** and then touch a contact entry.
– or –

Touch **Home screen**, **Lock screen**, or **Home and lock screen**.

A crop photo screen displays.

5. Touch and drag the crop box or the sides or corners of the crop box to create the crop area, then touch **Done** to save the cropped photo as the contact's icon or wallpaper. Touch **Cancel** to stop without cropping the photo.


Tip: To remove a contact photo, see “*Updating Contacts*” on page 35.




Tip: To change wallpaper, see “*Wallpapers*” on page 30.

Playing Videos

1. From a Home screen, touch  **Apps** →  **Gallery**.

2. Touch a category and then a group to view it, and then touch a video thumbnail to play the video.

Note: Videos are marked with a  **Play** button.




3. Touch  **Pause** to pause the video.
4. Touch  **Resume** to resume playing the video.
5. Touch and drag the  white dot on the progress bar to fast forward or rewind the video. Touch the left end of the progress bar to restart the video. Touch the right end of the progress bar to end the video playback.
– or –


Touch  **Rewind** to restart the video or

 **Fast Forward** to end the video.

Sharing Photos and Videos

Share photos and videos with your friends.

1. From a Home screen, touch  **Apps** →  **Gallery**.
2. Touch a category and then a group to display thumbnails.
3. Touch  **Menu** → **Select item**.

4. Touch one or more photos and videos to highlight them for sharing.
5. Touch  **Share**.
6. Touch an option, such as Bluetooth, and follow the on-screen instructions.

DRAFT
For Internal Use Only

Section 8: Connections

Your device includes features to connect to the Internet and to other devices by using Wi-Fi, Bluetooth, or a USB cable.

Internet






Your device is equipped with a full HTML Browser that allows you to access the Internet.

- From a Home screen, touch  **Browser**.

Navigating the Internet

The following options are available for Internet navigation.

Command Keys

- Touch  **Back** or  to return to the previous page.
- Touch and hold  **Back** display browser History.
- Touch  **Forward** to go forward to a recent page.
- Touch  **Refresh** to reload the current page.

Touching and Dragging

- Touch and drag your finger on the screen to navigate pages and to reposition pages within the screen.

Entering Text in a Field

- While browsing, touch a text field to display the virtual QWERTY keyboard to enter text.

Zoom

- Tap the screen twice to zoom in or out.
- Use two fingers, such as your index finger and thumb, to zoom out by making an inward pinch motion on the screen. To zoom in, make an outward motion by sweeping your fingers out.



Tip: For convenient browsing, you can rotate the device to landscape mode.




Selecting Items On a Page

While browsing, use gestures and menus to navigate:

- Touch an item to select it.
- Touch a hyperlink to follow the link.
- Touch and hold on a hyperlink or an image for options.


Using Browser Windows


You can have multiple windows open at one time and easily switch between windows.

1. From a Home screen, touch  **Browser**.
2. To open a new window, touch  at the top of the screen.
3. To switch to another open window, touch its tab at the top of the screen.
4. To delete an open window, touch the tab at the top of the screen, and then touch .

Entering a URL

Access a website quickly by entering the URL.

1. From a Home screen, touch  **Browser**.
2. Touch the **URL** field at the top of the screen, then enter the URL using the virtual QWERTY keyboard.
As you enter characters, potential matches display.



Note: Use the  **Delete** key to clear the URL field, if necessary.

3. Touch a match to complete the URL.
– or –

Continue entering characters and touch the **Go** key to load the page.

Creating Bookmarks

While browsing, bookmark a site to quickly access it later.

1. From a Home screen, touch  **Browser**.
2. Browse to a website, touch  **Add bookmark** at right of the address field, enter the required information, and touch **OK**.

A gold star  displays on the Bookmarked page.

Internet Menu

While viewing a webpage:

- Touch  **Menu** for options.



To configure web settings:

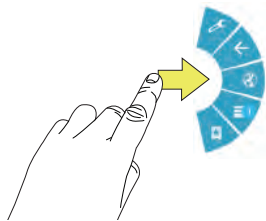
- Touch  **Menu** → **Settings**.

Follow the on-screen instructions.


Internet Quick Controls

Use Quick Controls to maximize your viewing area while browsing the internet.

1. From a Home screen, touch  **Browser**.
2. While viewing a webpage, touch  **Menu** → **Settings** → **Labs**, and then touch **Quick controls** to enable the function.
The Application and URL bars are hidden.
3. Swipe slowly inward from the left or right edge of the screen to access quick controls.



4. Without lifting your finger, move to an option and then lift your finger to initiate the option.

5. To cancel, display the Quick controls and touch  **Settings** → **Labs** and touch **Quick controls** to uncheck it.

Wi-Fi

Wi-Fi is a wireless networking technology that provides access to local area networks. Use your device's Wi-Fi feature to:

- Access the internet for browsing or to send and receive email.
- Access your corporate network.
- Use hotspots provided by hotels or airports while traveling.

Wi-Fi communication requires access to an existing Wireless Access Point (WAP). WAPs can be Open (unsecured, as with most hotspots) or Secured (requiring you to provide login credentials). Your device supports the 802.11 a/b/g/n Wi-Fi protocol.

Configuring Wi-Fi Settings




For more information about configuring your device's Wi-Fi settings, see “Wi-Fi” on page 120.

Finding Wi-Fi Networks

You can have your device automatically notify you of available networks. For more information, refer to “Advanced Settings” on page 121.

Turning Wi-Fi On

By default, your device’s Wi-Fi feature is turned off. Turning Wi-Fi on makes your device able to discover and connect to compatible in-range WAPs.

1. From a Home screen, touch  **Apps** →  **Settings** → **Wi-Fi**.
2. Tap the ON/OFF slider, located to the right of the Wi-Fi field, to turn Wi-Fi ON .




Scanning and Connecting to a Wi-Fi Network

When you turn on Wi-Fi, your device searches for available Wi-Fi connections, then displays them on screen.

1. From any screen, touch the Time in the Status Bar. The Status Details displays.
2. Touch **Wi-Fi** to turn Wi-Fi On. Your device automatically scans for available Wireless Access Points.

3. When the scan is complete, touch a Wi-Fi network to connect. If the Wi-Fi network is open, your device automatically connects. If the Wi-Fi network is secured, enter the password at the prompt to connect.

Adding a Wi-Fi Network Manually

1. From a Home screen, touch  **Apps** →  **Settings**.
2. Under **Wireless and network**, on the Wi-Fi tab, touch the **OFF / ON** icon  to turn Wi-Fi on.
3. Touch **Add Wi-Fi network**, then enter network information:
 - **Network SSID:** Enter the name of the Wi-Fi Wireless Access Point (WAP).
 - **Security:** Select the type of security used by the WAP.


Note: Depending on the Security protocol used by the WAP, additional network information may be required, such as a Password.

- **Password:** If the WAP is secured, enter the password or hex key.
4. Touch **Save** to save the settings.

Wi-Fi Direct

Wi-Fi Direct allows device-to-device connections so you can transfer large amounts of data over a Wi-Fi connection.

1. From a Home screen, touch  **Apps** →  **Settings** → **Wi-Fi**.

2. Touch the **OFF / ON** icon  to turn Wi-Fi on.
3. At the top of the Wi-Fi screen, tap the **Wi-Fi Direct** button.


Your device will begin to search for other devices enabled with Wi-Fi direct connections.

4. Enable Wi-Fi Direct (similar to Steps 1 - 3) on the device to which you want to connect.
5. Once the device you want to connect to is displayed, touch on it.

An Invitation to connect displays on the device to which you want to connect.

6. On that device, touch **Accept**.

You have 30 seconds to touch **Accept** on the device to which you want to connect for the connection to be made.

Once connected, the other device will show as **Connected** in your list of Wi-Fi Direct devices and the  icon will display at the bottom of your screen.

Sharing Information with Connected Device

To share videos, photos, or other information with the connected device, follow these steps:

1. View the information that you want to share. For example, if you want to share a photo, find the photo in your camera viewer or **My Files** folder, then touch the **Share**, **Share via**, or **Send via** option.

2. Touch the **Wi-Fi Direct** option.

The Wi-Fi Direct settings screen displays, Wi-Fi Direct is turned on, and your device scans for other devices.

3. Touch a connected device name. For example, `Android_XXXX`.

4. The other device displays a pop-up that indicates it is receiving the file.

The file is transferred and can be found in **My Files** in the `ShareViaWifi` folder.

Note: Depending on the other device model, the prompts and shared folder information may differ.

Bluetooth

Bluetooth is a short-range wireless communications technology for exchanging information over a distance of about 30 feet.




You do not need to line up the devices to send information with Bluetooth. If the devices are in range, you can exchange information between them, even if they are in different rooms.

Configuring Bluetooth Settings

Configure your device's Bluetooth settings. For more information, refer to “Bluetooth” on page 122.

Turning Bluetooth On or Off

To turn Bluetooth on or off:




1. From a Home screen, touch  **Apps**
→  **Settings**.
2. Under **Wireless and network**, on the Bluetooth tab, touch the **OFF / ON** icon  to turn Bluetooth on or off.

Note: When Bluetooth is on, the **Bluetooth** icon  displays in the Status Bar.

Pairing with a Bluetooth Device

Search for a Bluetooth device and pair with it, to exchange information between your device and the target device.

Tip: After pairing, your device and the target device recognize each other and exchange information without having to enter a passcode or PIN.

1. From a Home screen, touch  **Apps**
→  **Settings**.
2. On the Bluetooth tab, touch the **OFF / ON** icon  to turn Bluetooth on.
3. Enable the target device's discoverable or visible mode.
4. Touch the **Bluetooth** tab and then touch **Scan**. Touch **Stop** at any time to stop scanning.
5. From the list of found devices, touch the target device, then follow the prompts to complete the pairing:

- If the target device requires a PIN, enter a PIN for the target device and touch **OK**. When prompted, enter the PIN on the target device.
- If the device allows automatic or smart pairing, your device attempts to pair with the device automatically. Follow the prompts on your device and the target device to complete the pairing.

Sharing Data with a Bluetooth Device

To send data to a Bluetooth device:

1. Select a file or item from an appropriate application.
2. Select an option for sharing data with the Bluetooth feature.

Note: The method for selecting an option may vary by data type.

3. Search for and pair with a Bluetooth device. For more information, refer to *“Pairing with a Bluetooth Device”* on page 87.

Receiving Data from a Bluetooth Device

To receive data from a Bluetooth device:

1. Turn Bluetooth on. For more information, refer to *“Turning Bluetooth On or Off”* on page 87.

Note: To select the length of time that your device will be visible, select  **Menu** → **Visibility timeout**.

2. Pair with the Bluetooth device from which you want to receive data. For more information, refer to *“Pairing with a Bluetooth Device”* on page 87.
A Bluetooth authorization request pop-up displays when a Bluetooth device sends data to your device.
3. Select **Accept** to confirm that you are willing to receive data.
A File received message displays.

Note: Received data is saved to the Bluetooth folder. If you receive a contact, it is saved to your contacts automatically.

Managing Downloads

Files, apps, and other items you download in Internet, Gmail, Email, or in other ways, are stored on your tablet's internal storage. You can use the Downloads app to view, reopen, or delete what you have downloaded.



To manage the demands on their networks or to help you avoid unexpected charges, some mobile networks place restrictions on the size of the files you can download. When you are connected to such networks, and you try to download an oversized-file, you are asked or required to delay downloading the file until the next time you are connected to a Wi-Fi network. At that time, the download resumes automatically. The Downloads app can also be used to view and manage these queued files.

Downloaded files are stored in the Download directory in your tablet's internal storage. You can view and copy files from this directory when connected to a computer with a USB cable.

Uninstalling an App

Apps come pre-installed on your device and you can download additional apps from Google Play. If you decide to, you can uninstall apps you downloaded from Google Play and other sources.

There are several ways to uninstall an app:

1. From a Home screen, touch  **Apps** →  **Settings** → **Application manager**.
2. Touch the **Downloaded** tab.
3. Touch the app you want to uninstall.
4. Touch the **Uninstall** button.

A pop-up displays the message **Application will be uninstalled**.

5. Touch **OK** to confirm you want to uninstall the app.

You can also use Google Play to uninstall apps you downloaded from there (see “*Play Store*” on page 111).

Kies Via Wi-Fi

Samsung Kies is a software that enables you to update your device firmware, synchronize files, and transfer data to and from your device directly by connecting to the PC.

Note: Some features will be supported through the System Updates feature in the future. For more information, refer to “*Software Update*” on page 155.



To learn more about Samsung Kies and Samsung applications, browse featured applications and download Kies at: <http://www.samsung.com/us/support/downloads>.

Note: Samsung Kies works on both PC and Macintosh computers.

Connecting With Samsung Kies via Wi-Fi

1. From your PC, download the Samsung Kies application if you don't already have it. You can find it at samsung.com.

Warning! Close any running applications before connecting your device to a PC.

2. From your PC, launch the Samsung Kies application.
3. From your PC, connect to a Wi-Fi network.
4. From a Home screen, touch  **Apps**
→  **Settings**.
5. Touch **More settings** → **Kies via Wi-Fi**.

6. From your device, connect to the same Wi-Fi network that your PC is connected to if you have not already done so. For more information, refer to “Connect to a Wi-Fi Network” on page 170.

Synchronizing with Windows Media Player

Ensure that Windows Media Player is installed on your PC.

1. Attach your device to the computer with the USB cable. Your computer recognizes the connection and displays the AutoPlay screen.
2. Click the option to **Sync digital media files to this device** to synchronize music files.
3. Select and drag the music files you want to the sync list and begin synchronizing.
4. When finished, exit Windows Media Player and disconnect the USB cable.

Connecting as a Mass Storage Device

You can connect your device to a PC as a removable disk and access the file directory. If you insert a memory card in the device, you can also access the files directory from the memory card by using the device as a memory card reader.

Note: The file directory of the memory card displays as folder **Card**, separate from the internal memory, which is folder **Tablet**.


1. Insert a memory card into the device to transfer files from or to the memory card.
2. Attach your device to the computer with the USB cable. Your computer recognizes the connection and displays the AutoPlay screen.
3. Click the option to **Open device to view files**. You should see a Card and a Tablet folder.
4. Copy files from the PC to the memory card (Card folder).
5. When finished, close the PC folder and disconnect the USB cable.

Section 9: Applications

This section contains a description of each application that is available on the Apps screen, its function, and how to navigate through that particular application. If the application is already described in another section of this user manual, then a cross reference to that particular section is provided. Various widgets are also described.

Tip: To open applications quickly, add the icons of frequently-used applications to one of the Home screens, if it is not there by default. For details, see “*App Shortcuts*” on page 28.

Updating Applications

Once you have registered your device (see “*Software Update*” on page 155) and signed into your Google account (see “*Setting Up Your Gmail Account*” on page 49), you may see the  **Updates Available** notification in the Status Bar if there is a new version of one or more apps available or, when you open an application that is preloaded on your device, an **Update Available** message may be displayed.

To update the applications:

1. Touch the Time / Status Icons area to display the Status Details panel.
The Status Details display.
2. Touch **Updates available**.
For more information, refer to “*Updates to Downloaded Apps*” on page 111.

GPS Applications

GPS applications allow you to achieve real-time, GPS-enabled, turn-by-turn navigation and to access local searches based on a variety of category parameters.

To receive better GPS signals, avoid using your device in the following conditions:

- inside a building or between buildings
- in a tunnel or underground passage
- in poor weather
- around high-voltage or electromagnetic fields
- in a vehicle with tinted windows




Global GPS turn-by-turn navigation, mapping, and Point of Interest content is available for three continents, including North America (U.S., Canada, and Mexico), Western Europe, and China, where wireless coverage is available.

Important! If you touch or cover the internal GPS antenna while using GPS services, it may impede the GPS signal resulting in the GPS services not working in an optimal manner. Refer to the following diagram to locate the approximate location of the internal GPS antenna.

Alarm

Set alarms for reminders or for wake-up times.

Adding and Configuring Alarms




1. From a Home screen, touch  **Apps** →  **Alarm**.
2. Touch  **Create alarm** to display the Create alarm screen.
– or –
Touch an existing alarm to display the Edit alarm screen.
3. Touch fields on the screen to configure the alarm.

- Some fields have preset values. Touch the field and touch the desired value.
- Other fields have to be input. Touch the field and use the on-screen keyboard to input information.
- Touching the check box next to some fields may make additional fields available.



4. Touch **Save** to save the alarm.

The main Alarm screen displays showing the new or updated alarm.

Activating Alarms


1. From a Home screen, touch  **Apps** →  **Alarm**.
2. Touch  **Turn alarm on** to activate the alarm. A gray alarm means the alarm is deactivated.
3. Touch an alarm to change any of its settings and then touch **Save** to save the updates.

Editing and Deleting Alarms

1. From a Home screen, touch  **Apps** →  **Alarm**.
2. Touch and hold an alarm and then touch one of the following options:
 - **Edit**: Edit the alarm. For more information, refer to “*Adding and Configuring Alarms*” on page 93.

- **Delete:** Delete the alarm.

– or –

Touch  **Delete**, touch the existing alarms you want to delete or touch **Select all**, and then touch **Delete**.


Turning Off an Alarm

When the alarm sounds, to turn off the alarm:

- Touch and drag  to the right.

Setting the Snooze Feature

To activate the Snooze feature after an alarm sounds:

- Touch and slide  to the left. Snooze must first be set in the alarm settings.

AllShare Play

AllShare Play allows your tablet to stream photos, music, and videos from its memory to other DLNA certified (Digital Living Network Alliance) devices. Your tablet can also play digital content streamed from other DLNA certified devices.

Note: To view more information about DLNA certified products visit <http://www.dlna.org/home>.

Configuring AllShare Play

You must first connect both of your communicating devices to the same Wi-Fi and be using an active and registered Samsung account prior to using this application. For more information, refer to “Turning Wi-Fi On” on page 85. Connect to Wi-Fi, configure AllShare Play settings to identify your device as a server, and set treatment of copied files.

Important! The Samsung account manages the access information (username and password) to several applications, such as AllShare Play.

1. Connect to a Wi-Fi network. For more information, refer to “Scanning and Connecting to a Wi-Fi Network” on page 85.
2. From a Home screen, touch  **Apps**
→  **AllShare Play**.
The AllShare Play Sign In screen displays.
3. Touch **Sign in**.


The Samsung account screen displays.

-or-

Touch **Create new account**, if you have not set up a Samsung account, or touch **Sign in**, if you have already set up a Samsung account.



For more information, refer to “*Signing In to your Samsung Account*” on page 147.

The AllShare Play main screen displays.

4. For more information, touch  **Menu** → **FAQ**.



Amazon Kindle

This application allows you to download books, magazines, and newspapers to read on your tablet.

1. From a Home screen, touch  **Apps** → **Amazon Kindle** .
2. At the Kindle display, tap **Get Kindle for Android**.
3. Sign on to your Google account if you have not already done so.
4. Follow the on-screen instructions to download the application from the Play Store.

aNote HD

Use ANote HD, to easily and effectively managing your life on the go. Use the tabs to choose the categories for notes, such as creating a shopping list and check things off on-the-go.

1. From a Home screen, touch  **Apps** →  **aNote HD**.
2. Use the tabs on the left of the screen to touch the category you wish to use. Choose from the following options.
 - Quick Memo
 - My Idea
 - Travel Journal
 - To-Do list
 - My Calendar
 - Study
 - Email/Print
 - Thoughts
 - Calendar
 - My Diary
 - Shopping
 - Anniversary
 - Work
 - Scrap
 - Recipe