

- \* Depending on the software installed or your service provider or country, some of the descriptions in this guide may not match your phone exactly.
- \* Depending on your country, your phone and accessories may appear different from the illustrations in this guide.

**SAMSUNG ELECTRONICS**



World Wide Web  
<http://www.samsungmobile.com>

Printed in Korea  
Code No.:GH68-09870A  
English (EU). 04/2006. Rev. 1.0.



# **SGH-P900**

## **User's Guide**



# Important safety precautions



Failure to comply with the following precautions may be dangerous or illegal.

## Drive safely at all times

Do not use a hand-held phone while driving. Park the vehicle first.

## Switch off the phone when refuelling

Do not use the phone at a refuelling point (service station) or near fuels or chemicals.

## Switch off in an aircraft

Wireless phones can cause interference. Using them in an aircraft is both illegal and dangerous.

## Switch off the phone near all medical equipment

Hospitals or health care facilities may be using equipment that could be sensitive to external radio frequency energy. Follow any regulations or rules in force.

## Interference

All wireless phones may be subject to interference, which could affect their performance.



## Be aware of special regulations

Meet any special regulations in force in any area and always switch off your phone whenever it is forbidden to use it, or when it may cause interference or danger.


## Water resistance

Your phone is not water-resistant. Keep it dry.

## Sensible use

Use only in the normal position (held to the ear). Avoid unnecessary contact with the antenna when the phone is switched on.

## Emergency calls

Key in the emergency number for your present location, then press .

## Keep your phone away from small children

Keep the phone and all its parts, including accessories, out of the reach of small children.

## Accessories and batteries

Use only Samsung-approved batteries and accessories, such as headsets and PC data cables. Use of any unauthorised accessories could damage you or your phone and may be dangerous.

- The phone could explode if the battery is replaced with an incorrect type.
- Dispose of used batteries according to the manufacturer's instructions.



At very high volumes, prolonged listening to a headset can damage your hearing.

## Qualified service

Only qualified service personnel may repair your phone.

For more detailed safety information, see "Health and safety information" on page 101.

# About this Guide

This User's Guide provides you with condensed information about how to use your phone. To quickly learn the basics for your phone, please refer to "Get started" and "Step outside the phone."

In this guide, the following instruction icons appear:



Indicates that you need to pay careful attention to the subsequent information regarding safety or phone features.



Indicates that you can get more information on the referenced page.



Indicates that you need to press the Navigation keys to scroll to the specified option and then select it.



Indicates a key on the phone. For example, [OK/**i**]



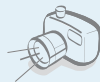
Indicates a soft key, whose function is displayed on the phone screen. For example, <Menu>



- **Digital Multimedia Broadcasting (DMB)**

Enjoy TV and radio broadcast via T-DMB (Terrestrial Digital Multimedia Broadcasting) services. Rotate your phone's screen and enjoy a large horizontal view.

## *Special features of your phone*



- **Camera and camcorder**

Use the camera module on your phone to take a photo or record a video.



- **Music player**

Play music files using your phone as a music player.



- **Bluetooth**

Transfer media files and personal data and connect to other devices using free, wireless Bluetooth technology. You can also use a Bluetooth stereo headset to enjoy music with high quality stereo sound.



- **Phone to TV**

View photos and video clips captured with the phone on your TV screen.



- **Web browser**

Access the wireless web to get up-to-the-minute information and a wide variety of media content.



- **File viewer**

Open documents in various formats on the phone without corruption.



- **Java**

Enjoy Java™-based embedded games and download new games.

- **Multimedia Message Service (MMS)**

Send and receive MMS messages with a combination of text, image, video, and audio.

- **E-mail**

Send and receive e-mails with image, video, and audio attachments.

## Contents

### Unpack 6

*Make sure you have each item*

### Your phone 6

*Keys, features, and locations*

### Get started 7

*First steps to operating your phone*

Install and charge the phone .....	7
Power on or off .....	9
Keys and display .....	9
Access menu functions .....	12
Customise your phone .....	13
Make/Answer calls .....	15

### Step outside the phone 16

*Begin with your T-DMB TV and radio, the camera, the music player, the web, and other special features*

Use T-DMB services .....	16
Use the camera .....	17
Play music .....	18

Browse the web .....	19
Use Phonebook .....	20
Send messages .....	21
View messages .....	23
Use Bluetooth .....	24
Use a memory card .....	25
Watch the phone display on a TV .....	26

### Enter text 28

*AB, T9, Number, and Symbol modes*

### Call functions 30

*Advanced calling features*

### Menu functions 34

*All menu options listed*

### Solve problems 99

*Help and personal needs*

### Health and safety information 101

### Index 122

## Overview of menu functions

To access Menu mode, press <Menu> in Idle mode.

<b>1 Call log</b>	▶ p. 34	<b>3 Applications</b>	▶ p. 40	<b>5 Messages</b>	▶ p. 56	<b>8 Camera</b>	▶ p. 80
1 Recent contacts	▶ p. 34	1 Mobile TVi	▶ p. 40	1 Create message	▶ p. 56		
2 Missed calls	▶ p. 35	2 Music player	▶ p. 45	2 My messages	▶ p. 60		
3 Dialled calls	▶ p. 35	3 Voice recorder	▶ p. 48	3 Templates	▶ p. 64	<b>9 Settings</b>	▶ p. 86
4 Received calls	▶ p. 35	4 Java world	▶ p. 49	4 Delete all	▶ p. 65	1 Time and date	▶ p. 86
5 Delete all	▶ p. 35	5 World time	▶ p. 50	5 Settings	▶ p. 66	2 Phone settings	▶ p. 87
6 Call time	▶ p. 35	6 Alarm	▶ p. 51	6 Memory status	▶ p. 71	3 Display settings	▶ p. 88
7 Call cost*	▶ p. 36	7 Calculator	▶ p. 51			4 Sound settings	▶ p. 89
<b>2 Phonebook</b>	▶ p. 36	8 Converter	▶ p. 52	<b>6 File manager</b>	▶ p. 71	5 Light settings	▶ p. 90
1 Contact list	▶ p. 36	9 Timer	▶ p. 52	1 Images	▶ p. 71	6 Network services	▶ p. 91
2 Add new contact	▶ p. 37	10 Stopwatch	▶ p. 52	2 Videos	▶ p. 72	7 Bluetooth	▶ p. 93
3 Group	▶ p. 38	11 Key management	▶ p. 53	3 Music	▶ p. 74	8 Security	▶ p. 96
4 Speed dial	▶ p. 38	12 SIM AT*	▶ p. 53	4 Sounds	▶ p. 74	9 Connection settings	▶ p. 97
5 My name card	▶ p. 39	<b>4 Browser</b>	▶ p. 53	5 Other files	▶ p. 75	10 Reset settings	▶ p. 99
6 Own number	▶ p. 39	1 Home	▶ p. 53	6 Memory card**	▶ p. 76		
7 Management	▶ p. 40	2 Enter URL	▶ p. 55	7 Memory status	▶ p. 77		
8 Service number*	▶ p. 40	3 Bookmarks	▶ p. 55	<b>7 Calendar</b>	▶ p. 77		
		4 Saved pages	▶ p. 56				
		5 History	▶ p. 56				
		6 Clear cache	▶ p. 56				
		7 Browser settings	▶ p. 56				

\* Shows only if supported by your SIM card.

\*\* Shows only if a memory card is inserted.



## Unpack

Make sure you have each item



Phone



Travel Adapter



Battery



User's Guide

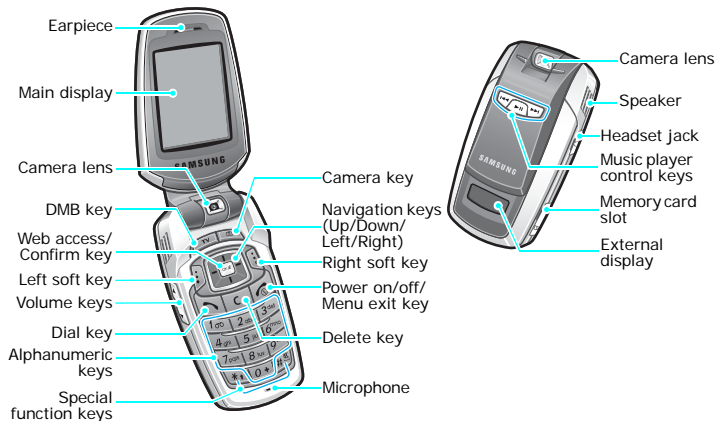
You can obtain various accessories from your local Samsung dealer.



The items supplied with your phone and the accessories available at your Samsung dealer may vary, depending on your country or service provider.

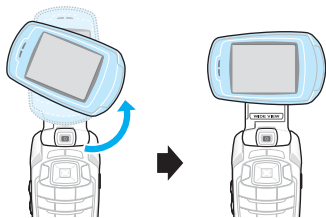
## Your phone

Keys, features, and locations



## Wide view

To view the display as a wide view screen, simply rotate the LCD compartment 90 degrees.



## Get started

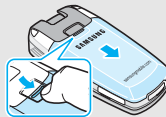
*First steps to operating your phone*

### SIM card information

When you subscribe to a cellular network, you receive a plug-in SIM (Subscriber Identity Module) card loaded with your subscription details, such as your PIN, and available optional services.

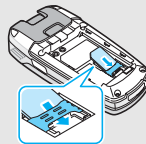
### Install and charge the phone

- 1 Remove the battery cover.



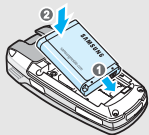
- ✓ If the phone is already on, first turn it off by pressing and holding [⏻].

- 2 Insert the SIM card.

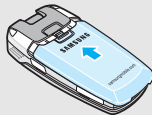


- ✓ Make sure that the gold-coloured contacts on the card are face down.

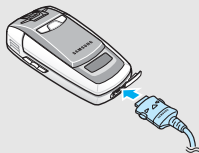
**3** Install the battery.



**4** Reattach the battery cover.



**5** Plug the travel adapter into the phone.



**6** Plug the adapter into a standard AC wall outlet.


**7** When the phone is completely charged (the battery icon becomes still), unplug the adapter from the power outlet.

**8** Remove the adapter from the phone.



### Low battery indicator

When the battery is low:

- a warning tone sounds,
- the low battery message displays, and
- the empty battery icon  blinks.

If the battery level becomes too low, the phone automatically turns off. Recharge your battery.

## Power on or off

### Switch on

1. Open the phone.


2. Press and hold [.

3. If necessary, enter the PIN and press <OK>.

Do not turn on the phone when mobile phone use is prohibited.

### Switch off

1. Open the phone.

2. Press and hold [.

## Keys and display

### Keys



In Idle mode, press and hold to access the **Mobile TVi** menu.



In Idle mode, press to turn on the camera.

In camera mode, take a photo or record a video.



Perform the function indicated on the bottom line of the display.



In Idle mode, access your favourite menus directly. ► p. 87

In Menu mode, scroll through menu options.



In Idle mode, launch the web browser.  
In Menu mode, select the highlighted menu option or confirm input.



Make or answer a call.

In Idle mode, retrieve numbers recently dialed, missed, or received.



Delete characters from the display or an item in an application.



Press and hold to switch the phone on or off.

End a call.

In Menu mode, cancel input and return the phone to Idle mode.



Enter numbers, letters, and some special characters.



In Idle mode, press and hold [1] to access your voicemail server. Press and hold [0] to enter an international call prefix.



Enter special characters.



In Idle mode, press and hold [#] to activate or deactivate Quiet mode. Press and hold [\*] to enter a pause between numbers.



Return to the previous file during playback.



Press and hold to launch or close the music player.  
Pause or resume playing music.



Skip to the next file during playback.



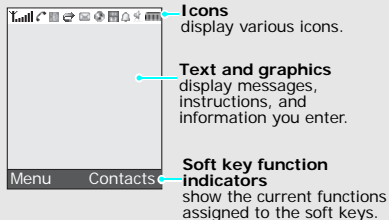
Adjust the phone volume.

In Idle mode, with the phone open, adjust the keytone volume.

With the phone closed, press and hold to turn on the external display.

## Display

### Layout












### Icons\*

- Received signal strength
- GPRS network
- Connecting to GPRS network
- EDGE network
- Call in progress
- Out of your service area; you cannot make or receive calls

### Icons

- Connected to Internet
- Synchronised with PC
- Bluetooth active ► p. 94
- Connected to Bluetooth hands-free car kit or headset
- Call diverting feature active ► p. 91
- Home Zone, if registered for the appropriate service
- Office Zone, if registered for the appropriate service
- Roaming network
- [New message](#)
- New e-mail
- New voicemail

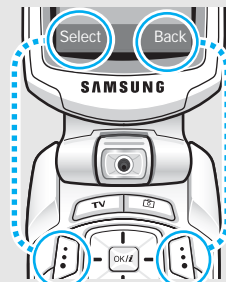
-  MP3 playback in progress
-  MP3 playback paused
-  Memory card inserted ► p. 25
-  Alarm set ► p. 51
-  [Call ringer set to vibrate](#) ► p. 89
-  [Silent mode](#) (Vibration)
-  [Silent mode](#) (Mute)
-  Mute mode, during a call
-  Battery power level

\* Depending on your country or service provider, the icons shown on the display may vary.

## Access menu functions

### Use the soft keys

The roles of the soft keys vary depending on the function you are using. The bottom line of the display indicates their current role.



Press the left soft key to select the highlighted option.

Press the right soft key to return to the previous menu level.

### Select an option

1. Press a desired soft key.
2. Press the Navigation keys to move to the next or previous option.
3. Press <**Select**> or [OK/↵] to confirm the function displayed or option highlighted.
4. To exit, choose either of the following methods.
  - Press <**Back**> to move up one level.
  - Press [⏮] to return to Idle mode.

### Use shortcuts

Press the number key corresponding to the option you want.

## Customise your phone

### Display language

1. In Idle mode, press <**Menu**> and select **Settings** → **Phone settings** → **Language**.
2. Select a language.

### Call ringer melody

1. In Idle mode, press <**Menu**> and select **Settings** → **Sound settings** → **Incoming call** → **Ringtone**.
2. Select a ringtone category.
3. Select a ringtone.
4. Press <**Save**>.



### Idle mode wallpaper

You can set wallpaper for the idle screen on the main display.

1. In Idle mode, press <Menu> and select **Settings** → **Display settings** → **Wallpaper** → **Main display**.
2. Select an image or a video category.
3. Select an image or a video.
4. Press <Select>.
5. Press <Save>.

### Menu mode skin colour

You can change the colour for the display components, such as title bars and highlight bars.

1. In Idle mode, press <Menu> and select **Settings** → **Display settings** → **Skin**.
2. Select a colour pattern.

### Menu shortcuts

You can set the Navigation keys to function as shortcuts to access your favourite menus.

1. In Idle mode, press <Menu> and select **Settings** → **Phone settings** → **Shortcuts**.
2. Select a key.
3. Select a menu to be assigned to the key.

### Silent mode

You can switch the phone to **Silent mode** to avoid disturbing other people.

Press and hold [#] in Idle mode.

## Phone lock

You can protect the phone against unauthorised use with a phone password. The phone will require the password on power-up.

1. In Idle mode, press **<Menu>** and select **Settings** → **Security** → **Change password**.
2. Enter the default password, **00000000**, and press **<OK>**.
3. Enter a new 4- to 8-digit password and press **<OK>**.
4. Enter the new password again and press **<OK>**.
5. Select **Phone lock**.
6. Select **Enable**.
7. Enter the password and press **<OK>**.

## Make/Answer calls

### Make a call

1. In Idle mode, enter an area code and phone number.
2. Press [**↵**].
3. To end the call, press [**📞**].

### Answer a call

1. When the phone rings, press [**↵**].
2. To end the call, press [**📞**].

### Adjust the volume during a call

Press [**▲/▼**].

## Step outside the phone

*Begin with your T-DMB TV and radio, the camera, the music player, the web, and other special features*

### Use T-DMB services

Your phone enables you to view TV channels and listen to radio stations via T-DMB (Terrestrial Digital Multimedia Broadcasting) services, anytime anywhere.

#### Watch television

1. In Idle mode, rotate the phone's screen.
2. Press and hold [TV].
3. Select **TV Channels**.
4. Select the channel you want.
5. To move to the next or previous channel, press [Left] or [Right].
6. To stop the broadcast, press [⏏].

#### Listen to the radio

1. In Idle mode, rotate the phone's screen.
2. Press and hold [TV].
3. Select **Audio channels**.
4. Select the station you want.
5. To move to the next or previous station, press [Left] or [Right].
6. To stop the broadcast, press [⏏].

## Use the camera

### Take a photo

1. Open the phone.
2. In Idle mode, press [] to turn on the camera.
3. Aim the lens at the subject by rotating the camera lens and make any desired adjustments.



4. Press [] or [] to take a photo. The photo is saved automatically.
5. Press <**Preview**> to take another photo.

### View a photo

1. In Idle mode, press <**Menu**> and select **File manager** → **Images** → **Photos**.
2. Select the photo you want.

### Record a video

1. In Idle mode, press [] to turn on the camera.
2. Press [**1**] to switch to Record mode.
3. Press [] or [] to start recording.
4. Press <> or [] to stop recording. The video is saved automatically.
5. Press <> to record another video.

### Play a video

1. In Idle mode, press <Menu> and select **File manager** → **Videos** → **Video clips**.
2. Select the video you want.

## Play music

### Copy music files to the phone

Use these methods:

- Download from the wireless web ► p. 53
- Download from a computer using the optional Samsung PC Studio ► Samsung PC Studio User's Guide
- Receive via Bluetooth ► p. 95
- Copy to a memory card and insert the card into the phone ► p. 25

### Create a play list

1. In Idle mode, press <Menu> and select **Applications** → **Music player**.
2. Press <Options> and select **Add music from** → **Phone** or **Memory card**.
3. Press [OK/✓] to select the files you want and press <Select>.
4. Press <Back> to return to the music player screen.

## Play music files

1. From the music player screen, press [OK/⏏].
2. During playback, use the following keys:
  - OK/⏏: pauses or resumes playback.
  - Left: returns to the previous file.
  - Right: skips to the next file.
  - Up: opens the play list.
  - ▲/▼: adjusts the volume.
  - Down: stops playback.

## Browse the web

Using a built-in web browser, you can easily access the wireless web to get a variety of up-to-date services and information and to download web content.

### Launch the web browser

In Idle mode, press [OK/⏏].

### Navigate the web

- To scroll through browser items, press [Up] or [Down].
- To select an item, press [OK/⏏].
- To return to the previous page, press <Back>.
- To move to the next page, press <Options> and select **Go** → **Forward**.
- To access options, press <Options>.

## Use Phonebook

### Add a contact

#### To the phone's memory:

1. In Idle mode, enter a phone number and press <**Options**>.
2. Select **Save contact** → **Phone** → a number type.
3. Specify contact information: First name, Last name, Mobile, Home, Office, Fax, Other, Email, Caller ID, Ringtone, Group, and Note.
4. Press <**Save**> to save the contact.

#### To the SIM card:

1. In Idle mode, enter a phone number and press <**Options**>.
2. Select **Save contact** → **SIM**.
3. Enter a name.
4. Press <**Save**> to save the contact.

### Find a contact

1. In Idle mode, press <**Contacts**>.
2. Enter the first few letters of the name you want.
3. Select a contact.
4. Scroll to a number and press [**\**] to dial, or press [**OK/i**] to edit contact information.

### Create and send a name card

1. In Idle mode, press <Menu> and select **Phonebook** → **My name card**.
2. Specify your contact information.
3. Press <Save> to save the name card.
4. To send the name card, press <Options> and select **Send via** → a sending method.

## Send messages

### Send a text message (SMS)

1. In Idle mode, press <Menu> and select **Messages** → **Create message** → **Text message**.
2. Enter the message text.
3. Press <Options> and select **Save and send** or **Send only**.
4. Enter destination numbers.
5. Press [OK/↵] to send the message.

### Send a multimedia message (MMS)

1. In Idle mode, press <Menu> and select **Messages** → **Create message** → **Multimedia message**.
2. Select **Subject**.
3. Enter the message subject and press [OK/↵].



4. Select **Image and video** or **Sound**.
5. For **Image and video**, select **Add image** or **Add video** and add an image or a video clip.  
For **Sound**, select **Add sound** and add a sound clip.
6. Select **Message**.
7. Enter the message text and press [OK/↵].
8. Press <**Options**> and select **Send**.
9. Enter destination numbers or addresses.
10. Press [OK/↵] to send the message.

#### Send an e-mail

1. In Idle mode, press <**Menu**> and select **Messages** → **Create message** → **Email**.
2. Select **Subject**.
3. Enter the e-mail subject and press [OK/↵].
4. Select **Message**.
5. Enter the e-mail text and press [OK/↵].
6. Select **File attached**.
7. Add image, video, sound, music files, or document files.
8. Press <**Options**> and select **Send**.
9. Enter e-mail addresses.
10. Press [OK/↵] to send the e-mail.


## View messages

### View a text message

When a notification appears:

1. Press <**View**>.
2. Select the message from the Inbox.

From the Inbox:


1. In Idle mode, press <**Menu**> and select **Messages** → **My messages** → **Inbox**.
2. Select an SMS message (.

### View a multimedia message

When a notification appears:

1. Press <**View**>.
2. Press <**Options**> and select **Retrieve**.
3. Select the message from the Inbox.

From the Inbox:

1. In Idle mode, press <**Menu**> and select **Messages** → **My messages** → **Inbox**.
2. Select an MMS message (.

### View an e-mail

1. In Idle mode, press <**Menu**> and select **Messages** → **My messages** → **Email inbox**.
2. Select an account.
3. Press <**Yes**> to download new e-mails or headers.
4. Select an e-mail or a header.
5. If you selected a header, press <**Options**> and select **Retrieve**.

## Use Bluetooth

Your phone is equipped with Bluetooth technology, enabling you to connect the phone wirelessly to other Bluetooth devices and exchange data with them, talk hands-free, or control the phone remotely.

### Turn on Bluetooth

1. In Idle mode, press **<Menu>** and select **Settings** → **Bluetooth** → **Activation** → **On**.
2. Select **My phone's visibility** → **On** to allow other devices to find your phone.

### Search for and pair with a Bluetooth device

1. In Idle mode, press **<Menu>** and select **Settings** → **Bluetooth** → **My devices** → **Search for new devices**.
2. Select a device.

3. Enter a Bluetooth PIN or the other device's Bluetooth PIN, if it has one, and press **<OK>**.  
When the owner of the other device enters the same code, pairing is complete.

### Send data

1. Access an application, **Phonebook**, **File manager**, or **Calendar**.
2. Scroll to an item.
3. Press **<Options>** and select **Send via** → **Bluetooth**.
4. Select a device.
5. If necessary, enter the Bluetooth PIN and press **<OK>**.

**Receive data**

1. When a device attempts to access your phone, press **<Yes>** to permit connection.
2. If necessary, press **<Yes>** to confirm that you are willing to receive.

**Use a memory card**

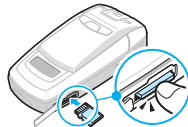
You can use an optional microSD memory card to increase your phone's memory capacity.

**Important memory card information**

- Frequent erasing and writing will shorten a card's lifespan.
- Do not remove a card from the phone or turn off the phone while data is being accessed or transferred. This could result in loss of data and/or damage to the card or phone.
- Do not subject cards to strong shocks.

**Insert a memory card**

- Do not touch card terminals with your fingers or metal objects. If dirty, wipe the card with a soft cloth.
  - Keep cards away from small children or pets.
  - Do not expose cards in a place subject to electro-static discharge and/or electrical noise.
1. Slide the card into the card slot, with the label side face down.



2. Press the card until it locks into place.

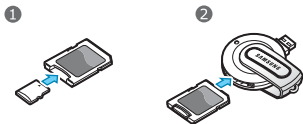
### Remove the memory card

1. Press the card so that it is disengaged from the phone.
2. Slide the card out of the slot.

### Use a card adapter

Using a card adapter and a USB card reader/writer, you can read the card on a PC.

1. Insert a memory card into a card adapter, and then the adapter into a card reader/writer.



2. Plug the USB connector of the card reader/writer into the USB port on your PC.
3. Access the appropriate memory disk and copy to and from the card.

## Watch the phone display on a TV

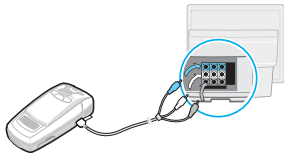
You can view the display of your phone on a TV screen by connecting the phone and TV with a TV out cable. This enables you to enjoy the photos, videos and music stored in the phone's memory with your family or friends on a larger screen.

### Important TV information

- Depending on your particular TV model, the location and shape of the video input and audio output ports may vary. Match cable connector and TV port colours.
- Depending on the video system, the image may vibrate or in some other way be less than optimal.
- Depending on the video quality, some video files may not display.
- You cannot use a Bluetooth stereo headset or the zooming feature in TV Out mode.

## Transfer phone display to a TV

1. With the TV switched on, connect your phone to the TV with a TV out cable, as shown.



2. Switch the TV to External Input mode.

The display switches to TV Out mode and you can view the phone's display on the TV screen.

3. If necessary, set the video system for your TV in the **TV-out** menu. ► p. 89
4. Access the application you want and open files.