

## Mobile Phone user manual

Some of the contents in this manual may differ from your phone depending on the software of the phone or your service provider.

Bluetooth ID : B0XXXXX

www.samsungmobile.com

Printed in Korea  
Code No.:GH68-XXXXX  
English (EU). 08/2008. Rev. 1.0

SAMSUNG

### Follow all safety warnings and regulations

Comply with any regulations that restrict the use of a mobile phone in a certain area.

### Use only Samsung-approved accessories

Using incompatible accessories may damage your phone or cause injury.

### Turn off the phone near medical equipment

Your phone can interfere with medical equipment in hospitals or health care facilities. Follow all regulations, posted warnings, and directions from medical personnel.

### Turn off the phone or disable the wireless functions when in an aircraft

Your phone can cause interference with aircraft equipment. Follow all airline regulations and turn off your phone or switch to a mode that disables the wireless functions when directed by airline personnel.

### Protect batteries and chargers from damage

- Avoid exposing batteries to very cold or very hot temperatures (below 0° C/32° F or above 45° C/113° F). Extreme temperatures can reduce the charging capacity and life of your batteries.
- Store the battery pack in a dry place.
- Prevent batteries from contacting metal objects, as this can create a connection between the + and – terminals of your batteries and lead to temporary or permanent

safety limit of 1.6 watts per kilogram (1.6 W/kg). The FCC exposure limit incorporates a substantial margin of safety to give additional protection to the public and to account for any variations in measurements.SAR tests are conducted using standard operating positions accepted by the FCC with the phone transmitting at its highest certified power level in all tested frequency bands. Although the SAR is determined at the highest certified power level, the actual SAR level of the phone while operating can be well below the maximum value. This is because the phone is designed to operate at multiple power levels so as to use only the power required to reach the network. In general, the closer you are to a wireless base station antenna, the lower the power output.

Before a new model phone is available for sale to the public, it must be tested and certified to the FCC that it does not exceed the exposure limit established by the FCC. Tests for each model phone are performed in positions and locations (e.g. at the ear and worn on the body) as required by the FCC. The highest SAR values for this model phone as reported to the FCC are: GSM850 Head:0.184 W/Kg, Body-worn: 0.787 W/Kg; GSM1900 Head: 0.402 W/Kg, Body-worn: 0.622 W/Kg.For body worn operation, this model phone has been tested and meets the FCC RF exposure guidelines whenused with a Samsung accessory designated for this product or when used with an accessory that contains no metal and that positions the handset a minimum of 1.5 cm from the body. Non-compliance with the above restrictions may result in violation of FCC



### Safety warnings

#### Keep your phone away from small children and pets

Keep your phone and all accessories out of the reach of small children or animals. Small parts may cause choking or serious injury if swallowed.

#### Protect your hearing



Listening to a headset at high volumes can damage your hearing. Use only the minimum volume setting necessary to hear your conversation or music.

#### Install mobile phones and equipment with caution

Ensure that any mobile phones or related equipment installed in your vehicle are securely mounted. Avoid placing your phone and accessories near or in an air bag deployment area. Improperly installed wireless equipment can cause serious injury when air bags inflate rapidly.

- battery damage.
- Never use a damaged charger or battery.

#### Handle your phone carefully and sensibly

- Do not allow your phone to get wet—liquids can cause serious damage. Do not handle your phone with wet hands. Water damage to your phone can void your manufacturer's warranty.
- Avoid using or storing your phone in dusty, dirty areas to prevent damage to moving parts.
- Your phone is a complex electronic device—protect it from impacts and rough handling to avoid serious damage.
- Do not paint your phone, as paint can clog moving parts and prevent proper operation.
- Your phone and memory cards may be damaged by exposure to magnetic fields. Do not use carrying cases or accessories with magnetic closures or allow your phone to come in contact with magnetic fields for extended periods of time.

#### Avoid interference with other electronic devices

Your phone emits radio frequency (RF) signals that may interfere with unshielded or improperly shielded electronic equipment, such as pacemakers, hearing aids, medical devices, and other electronic devices in homes or vehicles. Consult the manufacturers of your electronic devices to solve any interference problems you experience.

RF exposure guidelines.SAR information on this and other model phones can be viewed on-line at www.fcc.gov/oe/fccid. This site uses the phone FCC ID number, A3LSGHS366. Sometimes it may be necessary to remove the battery pack to find the number. Once you have the FCC ID number for a particular phone, follow the instructions on the website and it should provide values for typical or maximum SAR for a particular phone. Additional product specific SAR information can also be obtained at www.fcc.gov/cgb/sar.

#### FCC Notice and Cautions

##### FCC Notice

This device complies with Part 15 of the FCC Rules. Operation is subject to the following two conditions: (1) this device may not cause harmful interference, and (2) this device must accept any interference received, including interference that may cause undesired operation.. This equipment has been tested and found to comply with the limits for a Class B digital device, pursuant to part 15 of the FCC Rules. These limits are designed to provide reasonable protection against harmful interference in a residential installation. This equipment generates, uses and can radiate radio frequency energy and, if not installed and used in accordance with the instructions, may cause harmful interference to radio communications. However, there is no guarantee that interference will not occur in a particular installation. If this equipment does cause harmful interference to radiocommunications. However, there is no guarantee that interference will not occur in a particular installation. If this equipment does cause

#### Handle and dispose of batteries and chargers with care

- Use only Samsung-approved batteries and chargers specifically designed for your phone. Incompatible batteries and chargers can cause serious injuries or damage to your phone.
- Never dispose of batteries or phone in a fire. Follow all local regulations when disposing used batteries or phone.
- Never place batteries or phones on or in heating devices, such as microwave ovens, stoves, or radiators. Batteries may explode when overheated.
- Never crush or puncture the battery. Avoid exposing the battery to high external pressure, which can lead to an internal short circuit and overheating.

#### Avoid interference with pacemakers

Maintain a minimum of 15 cm (6 inches) between mobile phones and pacemakers to avoid potential interference, as recommended by manufacturers and the independent research group, Wireless Technology Research.

If you have any reason to suspect that your phone is interfering with a pacemaker or other medical device, turn off the phone immediately and contact the manufacturer of the pacemaker or medical device for guidance.

### Important usage information

#### Use your phone in the normal position

Avoid contact with your phone's internal antenna.

#### Allow only qualified personnel to service your phone

Allowing unqualified personnel to service your phone may result in damage to your phone and will void your warranty.

#### Ensure maximum battery and charger life

- Avoid charging batteries for more than a week, as overcharging may shorten battery life.
- Over time, unused batteries will discharge and must be recharged before use.
- Disconnect chargers from power sources when not in use.
- Use batteries only for their intended purpose.

#### Handle SIM cards and memory cards with care

- Do not remove a card while the phone is transferring or accessing information, as this could result in loss of data and/or damage to the card or phone.
- Protect cards from strong shocks, static electricity, and electrical noise from other devices.
- Frequent writing and erasing will shorten the life span of memory cards.

harmful interference to radio or television reception, which can be determined by turning the equipment off and on, the user is encouraged to try to correct the interference by one or more of the following measures:-Reorient or relocate the receiving antenna. -Increase the separation between the equipment and receiver. -Connect the equipment into an outlet on a circuit different from that to which the receiver is connected. -Consult the dealer or an experienced radio/TV technician for help.

#### Cautions

The phone may cause TV or radio interference if used in close proximity to receiving equipment. The FCC can require you to stop using the phone if such interference cannot be eliminated.Vehicles using liquefied petroleum gas (such as propane or butane) must comply with the National Fire Protection Standard (NFPA-58). For a copy of this standard, contact the National Fire Protection Association, One Battery march Park, Quincy, MA 02269, Attn: Publication Sales Division.

Changes or modifications made in the radio phone, not expressly approved by Samsung, will void the user's authority to operate the equipment.Only use approved batteries, antennas and chargers. The use of any unauthorized accessories may be dangerous and void the phone warranty if said accessories cause damage or a defect to the phone.Although your phone is quite sturdy, it is a complex piece of equipment and can be broken. Avoid dropping, hitting, bending or sitting on it.

#### Turn off the phone in potentially explosive environments

Do not use your phone at refuelling points (service stations) or near fuels or chemicals. Turn off your phone whenever directed by warning signs or instructions. Your phone could cause explosions or fire in and around fuel or chemical storage and transfer areas or blasting areas. Do not store or carry flammable liquids, gases, or explosive materials in the same compartment as the phone, its parts, or accessories.

#### Reduce the risk of repetitive motion injuries

When sending text messages or playing games on your phone, hold the phone with a relaxed grip, press the buttons lightly, use special features that reduce the number of buttons you have to press (such as templates and predictive text), and take frequent breaks.

### Safety precautions

#### Drive safely at all times

Avoid using your phone while driving and obey all regulations that restrict the use of mobile phones while driving. Use hands-free accessories to increase your safety when possible.

- Do not touch gold-coloured contacts or terminals with your fingers or metal objects. If dirty, wipe the card with a soft cloth.

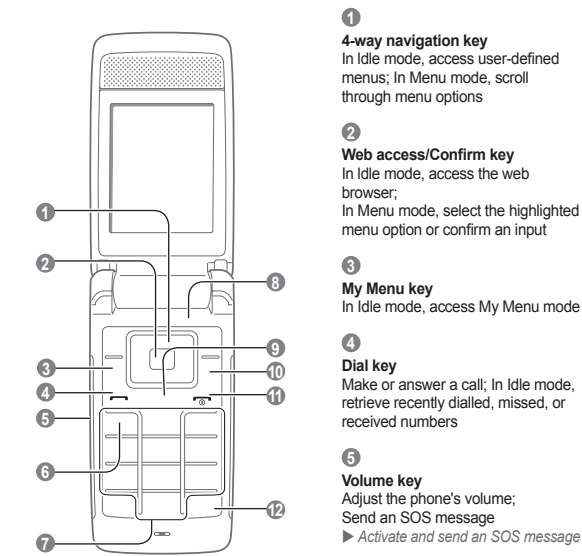
#### Ensure access to emergency services

Emergency calls from your phone may not be possible in some areas or circumstances. Before travelling in remote or undeveloped areas, plan an alternate method of contacting emergency services personnel.

#### Exposure to Radio Frequency (RF) Signals

Certification Information (SAR)Your wireless phone is a radio transmitter and receiver. It is designed and manufactured not to exceed the exposure limits for radio frequency (RF) energy set by the Federal Communications Commission (FCC) of the U.S. government. These FCC exposure limits are derived from the recommendations of two expert organizations, the National Counsel on Radiation Protection and Measurement (NCRP) and the Institute of Electrical and Electronics Engineers (IEEE). In both cases, the recommendations were developed by scientific and engineering experts drawn from industry, government, and academia after extensive reviews of the scientific literature related to the biological effects of RF energy. The exposure limit set by the FCC for wireless mobile phones employs a unit of measurement known as the Specific Absorption Rate (SAR). The SAR is a measure of the rate of absorption of RF energy by the human body expressed in units of watts per kilogram (W/kg). The FCC requires wireless phones to comply with a

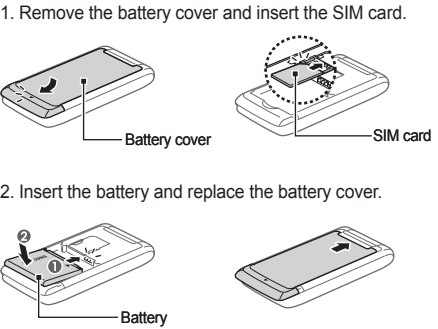
Phone layout



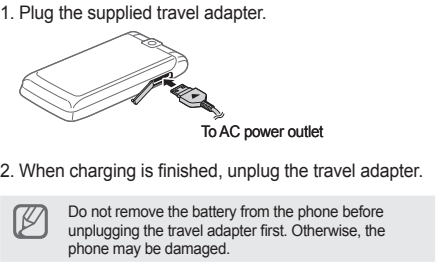
Your phone displays the following status indicators on the top of the screen:

Icon	Description	Icon	Description
	Signal strength		Bluetooth activated
	GPRS network connected		New text message (SMS)
	EDGE network connected		New multimedia message (MMS)
	Call in progress		New email message
	Call diverting active		New voice mail message
	SOS message feature activated		Music playback in progress
	Alarm activated		FM radio on
	Browsing the web		Memory card inserted
	Connecting to secured web page		Normal profile activated
	In Home Zone service area		Silent profile activated
	In Office Zone service area		Battery power level

Install the SIM card and battery



Charge the battery



Instructional icons

	<b>Note:</b> notes, usage tips, or additional information
	<b>Followed by:</b> the order of options or menus you must select to perform a step; for example: Press <Menu> → Messages (represents Menu, followed by Messages)
	<b>Square brackets:</b> phone keys; for example: [Power/Menu exit key] (represents the Power/Menu exit key)
	<b>Angled brackets:</b> softkeys that control different functions at each screen; for example: <OK> (represents the OK softkey)

Turn your phone on or off

1. To turn your phone on, press and hold [Power/Menu exit key].
2. To turn your phone off, press and hold [Power/Menu exit key].

Make a call

1. In Idle mode, enter an area code and a phone number.
2. Press [Power/Menu exit key] to dial the number.
3. To end the call, press [Power/Menu exit key].

Add a new contact

1. In Idle mode, enter a phone number and press <Options>.
2. Select Save → a memory location (phone or SIM) → New.
3. Select a number type (if necessary).
4. Enter contact information.
5. Press [OK] or press <Options> → Save to add the contact to memory.

Send and view messages

To send a text message

1. In Idle mode, press <Menu> → Messages → Create new message → Message.
2. Enter a destination number and scroll down.
3. Enter the message text.
4. Press <Options> → Send to send the message.

To view text messages

1. In Idle mode, press <Menu> → Messages → My messages → Inbox.
2. Select a text message.

Answer a call

1. When a call comes in, press [Power/Menu exit key].
2. To end the call, press [Power/Menu exit key].

Adjust the volume

To adjust the volume of the ringtone

1. In Idle mode, press <Menu> → Settings → Phone profiles.
2. Scroll to the phone profile you are using.
3. Press <Options> → Edit.
4. Select Call alert volume.
5. Scroll left or right to adjust the volume level.
6. Press <Save> twice.

To adjust the volume of voice during a call

While a call is in progress, press [▲/▼] to adjust the earpiece volume.

Change your ringtone

1. In Idle mode, press <Menu> → Settings → Phone profiles.
2. Scroll to the phone profile you are using.
3. Press <Option> → Edit.
4. Select Voice call ringtone.
5. Select a ringtone category → a ringtone.
6. Press <Save>.

Activate the mobile tracker

This feature helps track your phone when it is stolen or when someone tries to use your phone using other SIM card, the phone will automatically send the preset tracking message to family or friends. This feature may be unavailable due to certain features supported by your service provider.

1. In Idle mode, press <Menu> → Settings → Security → Mobile tracker
2. Enter your password and press <OK>.
3. Scroll left or right to On.
4. Scroll down and press [OK] to open the recipient list.
5. Press [OK] to open your contact list.
6. Scroll to a contact and press [OK].
7. Select a number (if necessary).
8. When you are finished selecting contacts, press <Select> → Select to return to the recipient list.
9. Press <Options> → Save to save the recipients.
10. Scroll down and enter the sender's name.
11. Press [OK] → <Accept>.

Call a recently dialed number

1. In Idle mode, press [Power/Menu exit key].
2. Scroll left or right to select a call type.
3. Scroll up or down to select a number or name.
4. Press [OK] to view details of the call or [Power/Menu exit key] to dial the number.

Enter text

To change the text input mode

- Press and hold [\*] to switch to an input mode. Depending on your region, you may be able to access an input mode for your specific language.
- Press [\*] to change case or switch to Number mode.
- Press and hold [#] to switch to Symbol mode.

T9 mode

1. Press the appropriate alphanumeric keys to enter an entire word.
2. When the word displays correctly, press [#] to insert a space. If the correct word does not display, select an alternate word from the list that appears.

Activate and send an SOS message

In an emergency, you can send SOS messages to your family or friends for help.

To activate the SOS message

1. In Idle mode, press <Menu> → Messages → SOS messages → Sending options.
2. Scroll left or right to On.
3. Scroll down and press [OK] to open the recipient list.
4. Press [OK] to open your contact list.
5. Scroll to a contact and press [OK].
6. Select a number (if necessary).
7. When you are finished selecting contacts, press <Select> → Select to return to the recipient list.
8. Press <Options> → Save to save the recipients.
9. Scroll down and set the number of times to repeat the SOS message.
10. Press <Save> → <Yes>.

To send an SOS message

1. With the phone closed, press [▲/▼] four times to send an SOS message to preset numbers. The phone switches to SOS mode and sends the preset SOS message.
2. To exit SOS mode, press [Power/Menu exit key].

ABC mode

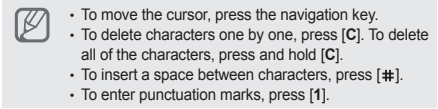
Press the appropriate alphanumeric key until the character you want appears on the display.

Number mode

Press the appropriate alphanumeric key to enter a number.

Symbol mode

Press the appropriate alphanumeric key to select a symbol.



Use the camera

Capture photos

1. In Idle mode, press the navigation key down.
2. Aim the lens at the subject and make any adjustments.
3. Press [OK] to take a photo.
4. Press <Back> to take another photo (step 2).

View photos

In Idle mode, press <Menu> → My files → Images → My photos → a photo file.

Listen to music

Keys	Function
OK	Pause or resume playback
▲/▼	Adjust the volume up or down
Navigation	<ul style="list-style-type: none"><li>• Left: Restart playback; Skip backward (press within 3 seconds); Scan backward in a file (press and hold)</li><li>• Right: Skip forward; Scan forward in a file (press and hold)</li><li>• Up: Open the playlist</li><li>• Down: Stop playback</li></ul>