



# **SGH-X520**

## **User's Guide**



# Important safety precautions



Failure to comply with the following precautions may be dangerous or illegal.

## Drive safely at all times

Do not use a hand-held phone while driving. Park the vehicle first.

## Switch off the phone when refuelling

Do not use the phone at a refuelling point (service station) or near fuels or chemicals.

## Switch off in an aircraft

Wireless phones can cause interference. Using them in an aircraft is both illegal and dangerous.

## Switch off the phone near all medical equipment

Hospitals or health care facilities may be using equipment that could be sensitive to external radio frequency energy. Follow any regulations or rules in force.

## Interference

All wireless phones may be subject to interference, which could affect their performance.



## Be aware of special regulations

Meet any special regulations in force in any area and always switch off your phone whenever it is forbidden to use it, or when it may cause interference or danger.


## Water resistance

Your phone is not water-resistant. Keep it dry.

## Sensible use

Use only in the normal position (held to the ear). Avoid unnecessary contact with the antenna when the phone is switched on.

## Emergency calls

Key in the emergency number for your present location, then press .

## Keep your phone away from small children

Keep the phone and all its parts, including accessories, out of the reach of small children.

## Accessories and batteries

Use only Samsung-approved batteries and accessories such as headsets and PC data cables. Use of any unauthorised accessories could damage you or your phone and may be dangerous.

- The phone could explode if the battery is replaced with an incorrect type.
- Dispose of used batteries according to the manufacturer's instructions.



At very high volumes, prolonged listening to a headset can damage your hearing.

## Qualified service

Only qualified service personnel may repair your phone.

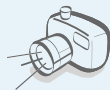
For more detailed safety information, see "Health and safety information" on page 99.

# About this Guide

This User's Guide provides you with condensed information about how to use your phone. To quickly learn the basics for your phone, please refer to "Get started" and "Step outside the phone."

In this guide, the following instruction icons appear:

- ☑ Indicates that you need to pay careful attention to the subsequent information regarding safety or phone features.
- Indicates that you can get more information on the referenced page.
- Indicates that you need to press the Navigation keys to scroll to the specified option and then select it.
- [ ] Indicates a key on the phone. For example, [↵]
- < > Indicates a soft key, whose function is displayed on the phone screen. For example, <Menu>



- **Camera and camcorder**  
Use the camera module on your phone to take a photo or record a video.

## *Special features of your phone*



- **Image editor**  
Crop, resize, rotate, and decorate your photos.



- **Photo printing**  
Print your photos to preserve your best moments forever.



- **File viewer**  
Open documents in various formats on the phone without corruption.



- **Web browser**

Access the wireless web to get up-to-the-minute information and a wide variety of media content.



- **Offline mode**

Switch your phone to offline to use its non-wireless functions in an airplane.



- **E-mail**

Send and receive e-mails with image, video, and audio attachments.



- **Multimedia Message Service (MMS)**

Send and receive MMS messages with a combination of text, image, video, and audio.



- **Java**

Enjoy Java™-based embedded games and download new games.



- **Voice recorder**

Record memos or sounds.

## Contents

### **Unpack 6**

*Make sure you have each item*

### **Your phone 6**

*Keys, features, and locations*

### **Get started 7**

*First steps to operating your phone*

Install and charge the phone ..... 7

Power on or off ..... 8

Keys and display ..... 9

Access menu functions ..... 12

Customise your phone ..... 13

Make/Answer calls ..... 16

### **Step outside the phone 16**

*Begin with your camera, the music player, the web, and other special features*

Use the camera ..... 16

Play music ..... 17

Browse the web ..... 19

Use Phonebook ..... 19

Use a memory card ..... 25

Watch the phone display on a TV ..... 27

### **Enter text 28**

*AB, T9, Number, and Symbol modes*

### **Call functions 30**

*Advanced calling features*

### **Menu functions 34**

*All menu options listed*

### **Solve problems 97**

*Help and personal needs*

### **Health and safety information 99**

### **Index 120**

## Overview of menu functions

To access Menu mode, press <Menu> in Idle mode.

### 1 Call log ▶ p. 34

- 1 Recent contacts ▶ p. 34
- 2 Missed calls ▶ p. 35
- 3 Dialed calls ▶ p. 35
- 4 Received calls ▶ p. 35
- 5 Delete all ▶ p. 35
- 6 Call time ▶ p. 35
- 7 Call costs<sup>1</sup> ▶ p. 36

### 2 Phonebook ▶ p. 36

- 1 Contact list ▶ p. 36
- 2 Create contact ▶ p. 37
- 3 Group ▶ p. 38
- 4 Speed dial ▶ p. 38
- 5 My namecard ▶ p. 39
- 6 Own number ▶ p. 39
- 7 Management ▶ p. 39
- 8 Service number<sup>1</sup>. ▶ p. 40

### 3 Applications ▶ p. 40

- 1 Voice recorder ▶ p. 43
- 2 Image editor ▶ p. 44
- 3 Java world ▶ p. 45
- 4 World clock ▶ p. 46
- 5 Alarm ▶ p. 47
- 6 Calculator ▶ p. 47
- 7 Converter ▶ p. 48
- 8 Timer ▶ p. 48

### 3 Applications (continued)

- 9 Stopwatch ▶ p. 48
- 10 Key management ▶ p. 49
- 11 Memo ▶ p. 49
- 12 SIM AT<sup>1</sup>. ▶ p. 49

### 4 Browser ▶ p. 50

- 1 Home ▶ p. 50
- 2 Enter URL ▶ p. 51
- 3 Bookmarks ▶ p. 51
- 4 Saved pages ▶ p. 52
- 5 History ▶ p. 52
- 6 Clear cache ▶ p. 52
- 7 Browser settings ▶ p. 52
- 8 Streaming settings<sup>2</sup> ▶ p. 53

### 5 Messages ▶ p. 53

- 1 Create message ▶ p. 53
- 2 My messages ▶ p. 57
- 3 Templates ▶ p. 62
- 4 Delete all ▶ p. 62
- 5 Settings ▶ p. 63
- 6 Memory status ▶ p. 68

### 6 My files ▶ p. 69

- 1 Images ▶ p. 69
- 2 Videos ▶ p. 70
- 3 Music ▶ p. 72
- 4 Sounds ▶ p. 72

### 6 My files (continued)

- 5 Other files ▶ p. 73
- 6 Memory card<sup>3</sup> ▶ p. 75
- 7 Memory status ▶ p. 75

### 7 Calendar ▶ p. 75

### 8 Camera ▶ p. 78

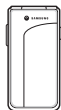
### 9 Settings ▶ p. 84

- 1 Time and date ▶ p. 84
- 2 Phone settings ▶ p. 85
- 3 Display settings ▶ p. 86
- 4 Sound settings ▶ p. 87
- 5 Light settings ▶ p. 88
- 6 Network services ▶ p. 91
- 7 Security ▶ p. 94
- 8 Connection settings ▶ p. 95
- 9 Reset settings ▶ p. 97

1. Shows only if supported by your SIM card.
2. Show only if supported by your service provider.
3. Shows only if a memory card is inserted.

## Unpack

Make sure you have each item



Phone



Travel Adapter



Battery



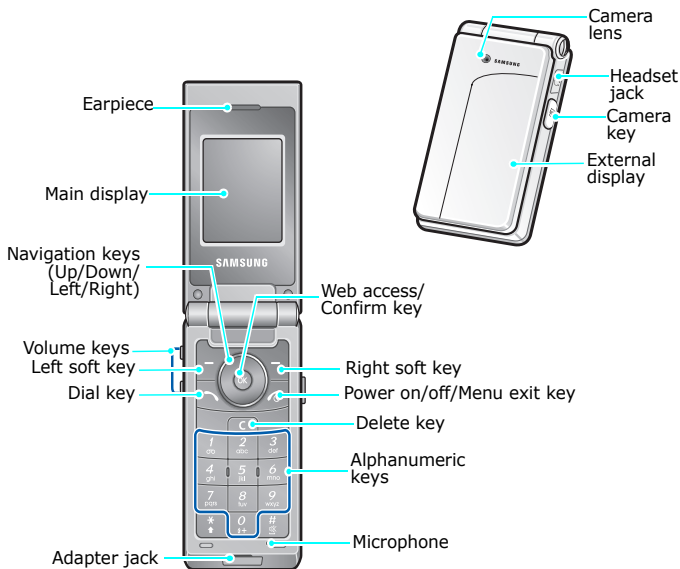
User's Guide

You can obtain various accessories from your local Samsung dealer.

- ☒ The items supplied with your phone and the accessories available at your Samsung dealer may vary, depending on your country or service provider.

## Your phone

Keys, features, and locations





## Get started

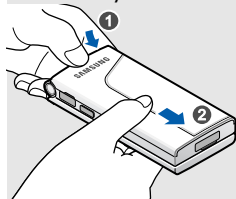
*First steps to operating your phone*

### SIM card information

When you subscribe to a cellular network, you receive a plug-in SIM (Subscriber Identity Module) card loaded with your subscription details, such as your PIN, and available optional services.

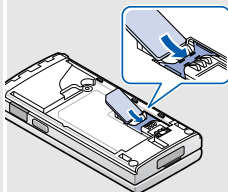
### Install and charge the phone

- 1** Remove the battery cover.



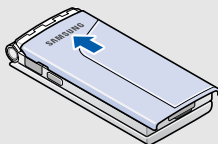
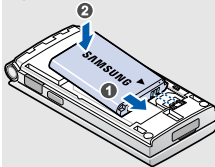
✓ If the phone is already on, first turn it off by pressing and holding [⏻].

- 2** Insert the SIM card.

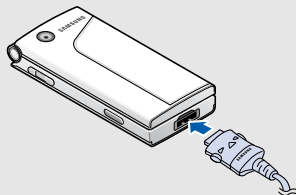


✓ Make sure that the gold-coloured contacts on the card are face down.

- 3** Install the battery. **4** Reattach the battery cover.



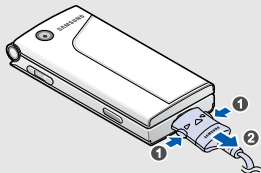
- 5** Plug the travel adapter into the phone.



- 6** Plug the adapter into a standard AC wall outlet.


- 7** When the phone is completely charged (the battery icon becomes still), unplug the adapter from the power outlet.

- 8** Remove the adapter from the phone.



### Low battery indicator

When the battery is low:

- a warning tone sounds,
- the low battery message displays, and
- the empty battery icon  blinks.

If the battery level becomes too low, the phone automatically turns off. Recharge your battery.

## Power on or off

### Switch on

1. Open the phone.


2. Press and hold [].

Do not turn on the phone when mobile phone use is prohibited.

3. If necessary, enter the PIN and press **<OK>**.

### Switch off

1. Open the phone.

2. Press and hold [].

## Offline mode

You can switch the phone to Offline mode, in which the phone functions requiring network connection are deactivated. This mode is helpful when you want to use your phone in a place where you are not allowed to use mobile devices, such as in an airplane and at a hospital.

To switch to Offline mode, press <**Menu**> and select **Settings** → **Phone settings** → **Offline mode** → **On**.

In Offline mode, you can use non-wireless functions, such as games, calendar, camera, and music player.

## Keys and display

### Keys



Perform the function indicated on the bottom line of the display.



In Idle mode, access your favourite menus directly.

► p. 85

In Menu mode, scroll through menu options.



In Idle mode, launch the web browser.

In Menu mode, select the highlighted menu option or confirm input.



Make or answer a call.

In Idle mode, retrieve numbers recently dialled, missed, or received.



Delete characters from the display, or items in an application.



Press and hold to switch the phone on or off.

End a call.

In Menu mode, cancel input and return the phone to Idle mode.



Enter numbers, letters, and some special characters.

In Idle mode, press and hold [**1**] to access your voicemail server. Press and hold [**0**] to enter an international call prefix.



Enter special characters.



In Idle mode, press and hold [**#**] to activate or deactivate Silent mode. Press and hold [**\***] to enter a pause between numbers.



Adjust the phone volume.

In Idle mode, with the phone open, adjust the key tone volume. With the phone closed, press and hold to turn on the external display.

## Display

### Layout



#### Icons

display various icons.

#### Text and graphics

display messages, instructions, and information you enter.

#### Soft key function indicators

show the current functions assigned to the soft keys.

### Icons<sup>1</sup>



Received signal strength



GPRS network



Connecting to GPRS network



Transferring data in GPRS network



EDGE network



Connecting to EDGE network



Transferring data in EDGE network



Call in progress



Out of your service area; you cannot make or receive calls



Connected to Internet



Connected to a secured web page



Synchronised with PC



Call diverting feature active ► p. 89



Home Zone, if registered for the appropriate service



Office Zone, if registered for the appropriate service



Roaming network



SMS message










MMS message



E-mail



Voicemail

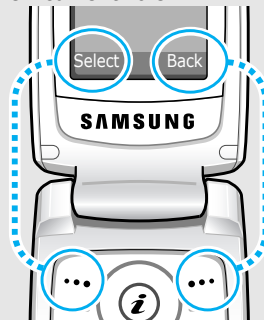
-  Bluetooth hands-free car kit or headset connected  
▶ p. 92
-  Alarm set ▶ p. 47
-  Silent mode (Vibration)
-  Silent mode (Mute)
-  Call ringer set to vibrate
-  Mute mode, during a call
-  Battery power level

1. Depending on your country or service provider, the icons shown on the display may vary.

## Access menu functions

### Use the soft keys

The roles of the soft keys vary depending on the function you are using. The bottom line of the display indicates their current role.



Press the left soft key to select the highlighted option.

Press the right soft key to return to the previous menu level.

## Select an option

1. Press a desired soft key.
2. Press the Navigation keys to move to the next or previous option.
3. Press **<Select>** or [**↵**] to confirm the function displayed or option highlighted.
4. To exit, choose either of the following methods.
  - Press **<Back>** to move up one level.
  - Press [**⏮**] to return to Idle mode.

## Use shortcuts

Press the number key corresponding to the option you want. For the menu numbers 10, 11, and 12, press [**0**], [**\***] and [**#**] respectively.

## Customise your phone

### Display language

1. In Idle mode, press **<Menu>** and select **Settings** → **Phone settings** → **Language**.
2. Select a language.

### Call ringer melody

1. In Idle mode, press **<Menu>** and select **Settings** → **Sound settings** → **Incoming call** → **Ringtone**.
2. Select a ringtone category.
3. Select a ringtone.
4. Press **<Save>**.

### Idle mode wallpaper

You can set wallpaper for the idle screen on the main display.

1. In Idle mode, press **<Menu>** and select **Settings** → **Display settings** → **Wallpaper** → **Main display**.
2. Select an image or a video category.
3. Select an image or a video clip.
4. Press **<Select>**.
5. Press **<Save>**.

### Menu mode skin colour

You can change the colour for the display components, such as title bars and highlight bars.

1. In Idle mode, press **<Menu>** and select **Settings** → **Display settings** → **Skin**.
2. Select a colour pattern.

### Menu shortcuts

You can set the Navigation keys to function as shortcuts to access your favourite menus.

1. In Idle mode, press **<Menu>** and select **Settings** → **Phone settings** → **Shortcuts**.
2. Select a key.
3. Select a menu to be assigned to the key.



## My Menu

You can set up a menu of your own favourite menu items.

To set a My menu item:

1. In Idle mode, press **<Menu>** and select **Settings** → **Phone settings** → **My menu**.
2. Select an item to be changed.
3. Select the menu item you want.

To access a My menu item:

1. In Idle mode, press [Up].
2. Scroll to an item.
3. Press [**i**].

## Silent mode

You can switch the phone to Silent mode to avoid disturbing other people.

Press and hold [**#**] in Idle mode.

## Phone lock

You can protect the phone against unauthorised use with a phone password. The phone will require the password on power-up.

1. In Idle mode, press **<Menu>** and select **Settings** → **Security** → **Change password**.
2. Enter the default password, **00000000**, and press **<OK>**.
3. Enter a new 4- to 8-digit password and press **<OK>**.
4. Enter the new password again and press **<OK>**.
5. Select **Phone lock**.
6. Select **Enable**.
7. Enter the password and press **<OK>**.

## Make/Answer calls

### Make a call

1. In Idle mode, enter an area code and phone number.
2. Press [↵].
3. To end the call, press [📞].

### Answer a call

1. When the phone rings, press [↵].
2. To end the call, press [📞].

### Adjust the volume during a call

Press [▲/▼].

## Step outside the phone

*Begin with your camera, the music player, the web, and other special features*

## Use the camera


### Take a photo

1. Open the phone.
2. In Idle mode, press <Menu> and select **Camera**.
3. Aim the lens at the subject and make any desired adjustments.
4. Press [📷] to take a photo. The photo is saved automatically.
5. Press <Preview> to take another photo.

**View a photo**

1. In Idle mode, press **<Menu>** and select **My files** → **Images** → **My photos**.
2. Select the photo you want.

**Record a video**

1. In Idle mode, press **<Menu>** and select **Camera**.
2. Press [**1**] to switch to Record mode.
3. Press [**i**] to start recording.
4. Press [**i**] or  to stop recording. The video is saved automatically.
5. Press **<Preview>** to record another video.

**Play a video**

1. In Idle mode, press **<Menu>** and select **My files** → **Videos** → **My video clips**.
2. Select the video you want.

## Browse the web

Using a built-in web browser, you can easily access the wireless web to get a variety of up-to-date services and information and to download web content.

### Launch the web browser

In Idle mode, press [**z**].

### Navigate the web

- To scroll through browser items, press [Up] or [Down].
- To select an item, press [**z**].
- To return to the previous page, press <**Back**>.
- To move to the next page, press <**Options**> and select **Go** → **Forward**.
- To access browser options, press <**Options**>.

## Use Phonebook

### Add a contact

To the phone's memory:

1. In Idle mode, enter a phone number and press <**Options**>.
2. Select **Save contact** → **Phone** → **New** → a number type.
3. Specify contact information: First name, Last name, Mobile, Home, Office, Fax, Other, Email, Caller ID, Ringtone, Group, and Note.
4. Press <**Save**> to save the contact.

**Add a contact****To the SIM card:**

1. In Idle mode, enter a phone number and press **<Options>**.
2. Select **Save contact** → **SIM** → **New**.
3. Enter a name.
4. Press **<Save>** to save the contact.

**Find a contact**

1. In Idle mode, press **<Contacts>**.
2. Enter the first few letters of the name you want.
3. Select a contact.
4. Scroll to a number and press [↶] to dial, or press [↷] to edit contact information.

**Create and send a name card**

1. In Idle mode, press **<Menu>** and select **Phonebook** → **My namecard**.
2. Specify your contact information.
3. Press **<Save>** to save the name card.
4. To send the name card, press **<Options>** and select **Send via** → a sending method.

## Send messages

### Send a text message (SMS)

1. In Idle mode, press <Menu> and select **Messages** → **Create message** → **Text message**.
2. Enter the message text.
3. Press <Options> and select **Save and send** or **Send only**.
4. Enter destination numbers.
5. Press [**i**] to send the message.

### Send a multimedia message (MMS)

1. In Idle mode, press <Menu> and select **Messages** → **Create message** → **Multimedia message**.
2. Select **Subject**.

3. Enter the message subject and press [**i**].
4. Select **Image and video** or **Sound**.
5. For **Image and video**, select **Add image** or **Add video** and add an image or a video clip.  
For **Sound**, select **Add sound** and add a sound clip.
6. Select **Message**.
7. Enter the message text and press [**i**].
8. Press <Options> and select **Send**.
9. Enter destination numbers or addresses.
10. Press [**i**] to send the message.

### Send an e-mail

1. In Idle mode, press <**Menu**> and select **Messages** → **Create message** → **Email**.
2. Select **Subject**.
3. Enter the e-mail subject and press [**⏏**].
4. Select **Message**.
5. Enter the e-mail text and press [**⏏**].
6. Select **File attached**.
7. Add image, video, sound, music files, or document files.
8. Press <**Options**> and select **Send**.
9. Enter e-mail addresses.
10. Press [**⏏**] to send the e-mail.

## View messages

### View a text message

When a notification appears:

1. Press <**View**>.
2. Select the message from the Inbox.

From the Inbox:

1. In Idle mode, press <**Menu**> and select **Messages** → **My messages** → **Inbox**.
2. Select an SMS message (✉).


### View a multimedia message

When a notification appears:

1. Press <**View**>.
2. Press <**Options**> and select **Retrieve**.
3. Select the message from the Inbox.

---

### From the Inbox:

1. In Idle mode, press <**Menu**> and select **Messages** → **My messages** → **Inbox**.
2. Select an MMS message ()

---

### View an e-mail

1. In Idle mode, press <**Menu**> and select **Messages** → **My messages** → **Email inbox**.
2. Select an account.
3. Press <**Yes**> to download new e-mails or headers.
4. Select an e-mail or a header.
5. If you selected a header, press <**Options**> and select **Retrieve** to retrieve the body of the e-mail.



## Enter text

### AB, T9, Number, and Symbol modes

You can enter text for some features, such as Messages, Phonebook, or Calendar, using AB mode, T9 mode, Number mode, and Symbol mode.

## Changing the text input mode

- Press and hold [**\***] to switch between T9 mode ( **T9AB** ) and AB mode ( **AB** ). Depending on your country, you may also be able to access an input mode for your specific language.
- Press [**\***] to change case or switch to Number mode ( **123** ).
- Press and hold [**#**] to switch to Symbol mode.

## Using AB mode

Press the appropriate key until the character you want appears on the display.

Key	Characters in order displayed	
	Upper case	Lower case
1	. , - ? ! @ : ( ) / _ 1	
2	A B C 2 Å Ä Æ Ç Γ	a b c 2 à ä æ ç γ
3	D E F 3 É Δ Φ	d e f 3 è é φ
4	G H I 4 Θ Ψ	g h i 4 ð ψ
5	J K L 5 Λ	j k l 5 λ
6	M N O 6 Ñ Ø Ö ö	m n o 6 ñ ø ö ö
7	P Q R S 7 Π Σ Ξ	p q r s 7 ρ σ ξ
8	T U V 8 Û ü	t u v 8 ù ü
9	W X Y Z 9 Ω	w x y z 9 ω
0	Space + = < > € £ \$ % & ¥ ¤ 0	

(Creating an SMS message with GSM-Alphabet encoding)

## Other AB mode operations

- To enter the same letter twice or to enter a different letter on the same key, wait for the cursor to move to the right automatically or press [Right]. Then, enter the next letter.
- Press [**#**] to insert a space.
- Press the Navigation keys to move the cursor.

- Press [C] to delete characters one by one. Press and hold [C] to clear the display.

## Using T9 mode

T9 is a predictive text input mode that allows you to key in any character using single keystrokes.

### Entering a word in T9 mode

1. Press [2] to [9] to start entering a word. Press each key once for each letter.

For example, press [4], [3], [5], [5], and [6] to enter *Hello* in T9 mode.

T9 predicts the word that you are typing, and it may change with each key that you press.

2. Enter the whole word before editing or deleting characters.
3. When the word displays correctly, go to step 4. Otherwise, press [0] to display alternative word choices for the keys that you have pressed.  
For example, *Of* and *Me* use [6] and [3].

4. Press [#] to insert a space and enter the next word.

### Other T9 mode operations

- Press [1] to enter periods or apostrophes automatically.
- Press [#] to insert a space.
- Press the Navigation keys to move the cursor.
- Press [C] to delete characters one by one. Press and hold [C] to clear the display.

### Adding a new word to the T9 dictionary

This feature may not be available for some languages.

1. Enter the word that you want to add.
2. Press [0] to display alternative words for your key presses. When there are no more alternative words, **Add** appears on the bottom line.
3. Press <Add>.
4. Enter the word you want using AB mode and press <OK>.

## Using Number mode

Number mode enables you to enter numbers.

Press the keys corresponding to the digits you want.

## Using Symbol mode

Symbol mode enables you to insert symbols.

To	Press
scroll to a symbol set	the Navigation keys.
select a symbol	the corresponding number key.
clear the entered symbols	[C].
insert the symbols	<OK>.

## Call functions

### Advanced calling features

## Making a call

1. In Idle mode, enter the area code and phone number.



- Press [C] to clear the last digit or press and hold [C] to clear the whole display.
- Press and hold [\*] to enter a pause between numbers.

2. Press [↵].
3. When you want to end the call, press [⏏].

## Making an international call

1. In Idle mode, press and hold [0]. The + character appears.
2. Enter the country code, area code, and phone number, then press [↵].

## Redialling recent numbers

1. In Idle mode, press [↵] to display the list of recent numbers.

2. Scroll to the number you want and press [↶].

### Making a call from Phonebook

Once you have stored a number in Phonebook, you can dial the number by selecting it from Phonebook. ► p. 31

You can also use the speed dial feature to assign your most frequently dialled numbers to specific number keys. ► p. 33

You can quickly dial a number from the SIM card using its location number assigned when stored.

1. In Idle mode, enter a location number and press [#].
2. Press [Left] or [Right] to scroll through other numbers.
3. Press <Dial> or [↶] to dial the number you want.

## Answering a call

When you receive an incoming call, the phone rings and displays the incoming call image.

Press <Accept> or [↶] to answer the call.

### Tips for answering a call

- When **Anykey answer** is active, you can press any key, except for <Reject> and [⏏]. ► p. 80
- When **Active flip** is active, you can simply open the phone. ► p. 80
- Press <Reject> or [⏏] to reject a call.
- Press and hold [▲/▼] to reject a call or mute the ringer, depending on the **Volume key** setting.  
► p. 80

## Viewing missed calls

If you have missed calls, the screen displays how many calls you have missed.

1. Press <View>.
2. If necessary, scroll through the missed calls.
3. Press [↶] to dial the number you want.

## Using the headset

Use the headset to make or answer calls without holding the phone.

Connect the headset to the jack on the left side of the phone. The button on the headset works as follows:

To	Press
redial the last call	the button twice.
answer a call	the button.
end a call	the button.

## Options during a call

You can access a number of functions during a call.

### Adjusting the volume during a call

Use [▲/▼] to adjust the earpiece volume during a call.

Press [▲] to increase the volume level and [▼] to decrease the volume level.

## Placing a call on hold/Retrieving

Press <**Hold**> to place a call on hold, or press <**Retrieve**> to retrieve the call.

### Making a second call


You can make another call if your network supports this function.

1. Press <**Hold**> to put the call on hold.
2. Make the second call in the normal way.
3. Press <**Swap**> to switch between the calls.
4. Press <**Options**> and select **End held call** to end the call on hold.
5. To end the current call, press [⏏].

### Answering a second call



You can answer an incoming call while already on the phone, if your network supports this function and you have activated the call waiting feature. ► p. 84

1. Press [↶] to answer the call. The first call is automatically put on hold.
2. Press <**Swap**> to switch between the calls.

3. Press <**Options**> and select **End held call** to end the call on hold.
4. To end the current call, press [].

## Using the speakerphone feature

Use your phone as a speakerphone to talk and listen with the phone a short distance away.

Press [>] and then <**Yes**> to activate the speakerphone feature. Press [>] again to switch back to the earpiece.

## Using In-call options

Press <**Options**> to access the following options during a call:

- **Speaker on/Normal:** turn on the speakerphone feature or switch back to Normal mode.
- **Switch to headset/Switch to phone:** transfer the call to a Bluetooth headset or hands-free car kit, or back to the phone. ► p. 92
- **Menu:** access the phone's menu functions.
- **Voice off/Voice on:** switch off the phone's microphone so that the other person on the phone cannot hear you, or switch it back on.
- **Mute keys/Send keys:** switch the key tones off or on.
 

☒ To communicate with answering machines or computerised telephone systems, **Send keys** must be selected.
- **Send DTMF:** send the DTMF (Dual tone multi-frequency) tones as a group. The DTMF tones are the tones used in phones for tone dialling, sounding when you press the number keys. This option is helpful for entering a password or an account number when you call an automated system, like a banking service.
- **Phonebook:** access the contact list.
- **SIM service:** access special services, such as news, weather forecasts, entertainment, and location services, provided by your SIM card. This option is available when you use a SIM card supporting SIM Application Toolkit menus.

- **Join:** set up a multi-party call by adding a caller on hold to a currently active call. You can include up to 5 people on a multi-party call.
- **Private:** have a private conversation with one multi-party call participant. The other participants can converse with each other. After the private conversation, select **Join** to return both private participants to the multi-party call.
- **Removed:** disconnect one multi-party call participant.

## *Menu functions*

*All menu options listed*

### **Call log** *(Menu 1)*

Use this menu to view the calls you have dialled, received, or missed, and the length of the calls. You can also check the cost of your calls, if your SIM card supports this function.

To access this menu, press <**Menu**> in Idle mode and select **Call log**.

### **Recent contacts** *(Menu 1.1)*

---

This menu displays the most recent calls dialled, received, or missed.

#### **Accessing a call log**

1. Press [Left] or [Right] to move to another call type.
2. Press [Up] or [Down] to scroll through the call list.
3. Press [**i**] to view the details of a call, or press [**↩**] to dial a number.

## Using call log options

While viewing call details, press **<Options>** to access the following options:

- **Call:** edit the number and dial it.
- **Add to Phonebook:** save the number to Phonebook.
- **Send:** send an SMS or MMS message to the selected number.
- **Delete:** delete the selected call log or all logs.

## Missed calls (Menu 1.2)

This menu displays the most recent calls you did not answer.

## Dialled calls (Menu 1.3)

This menu displays the most recent calls you have dialled.

## Received calls (Menu 1.4)

This menu displays the most recent calls you have received.

## Delete all (Menu 1.5)

Use this menu to delete all of the records in each call type.

1. Press [**z**] to select the call types to be cleared.
2. Press **<Delete>**.
3. Press **<Yes>** to confirm the deletion.

## Call time (Menu 1.6)

This menu displays the time log for calls made and received. The actual time invoiced by your service provider will vary.

- **Last call time:** check the length of your last call.
- **Total dialled calls:** check the total length of all the calls you have dialled.
- **Total received calls:** check the total length of all the calls you have received.

To reset the call timers, press **<Reset>**. You need to enter the phone password.



The password is preset to **00000000**. You can change this password. ► p. 86



## **Call costs** (Menu 1.7)

---

This network feature displays the cost of calls. This menu is available only if supported by your SIM card. Note that this is not intended to be used for billing purposes.

- **Last call cost:** check the cost of your last call.
- **Total cost:** check the total cost of all of your calls. If the total cost exceeds the maximum cost set in **Set max. cost**, you must reset the counter before you can make another call.
- **Max. cost:** check the maximum cost limit.
- **Reset counters:** reset the cost counters.
- **Set max. cost:** set the maximum cost authorised for your calls.
- **Price/Unit:** set the price per unit that is applied when the cost of your calls is calculated.

## **Phonebook** (Menu 2)

You can store phone numbers on your SIM card and in your phone's memory. The SIM card and phone's memory are physically separate, but they are used as a single entity called Phonebook.

To access this menu, press <**Menu**> in Idle mode and select **Phonebook**.

### **Contact list** (Menu 2.1)

---

Use this menu to search for contacts in Phonebook.



You can quickly access this menu by pressing <**Contacts**> in Idle mode.

### **Finding a contact**

1. Enter the first few letters of the name that you want to find.
2. Select a contact from the list.
3. Scroll to a number and press [↶] to dial, or press [↷] to edit contact information.

## Finding a contact in Idle mode

You can find contacts in Idle mode, by the spelling of a contact name. The phone searches for the contact names starting with the letters labelled on any of the keys you pressed.

1. In Idle mode, press the number keys containing the letters you want.
2. Press **<Options>** and select **Search as spelling**.

The phone searches Phonebook for the matching contacts and shows results.

## Using Phonebook options

While viewing contact details, press **<Options>** to access the following options:

- **Edit:** edit contact information.
- **Send message:** send an SMS or MMS message to the selected number, or an MMS message or e-mail to the selected address.
- **Copy to:** copy the contact to the phone's memory or to the SIM card.
- **Send via:** send the contact via SMS, MMS, e-mail, or Bluetooth.

- **Delete:** delete the selected contact.

## Create contact (Menu 2.2)

Use this menu to add a new contact to Phonebook.

## Storing a contact in the phone's memory

1. Select **Phone**.
2. Change the settings or enter information about the contact.
  - **First name/Last name:** assign a name.
  - **Mobile/Home/Office/Fax/Other:** add a number in any type.
  - **Email:** assign an e-mail address.
  - **Caller ID:** assign an image or a video to alert you to a call from the person.
  - **Ringtone:** assign a ringtone to alert you to a call from the person.
  - **Group:** assign the number to a caller group.
  - **Note:** add a memo about the person.
3. Press **<Save>** to save the contact.

## Storing a contact on the SIM card

1. Select **SIM**.
2. Enter information about the contact.
  - **Name:** assign a name.
  - **Phone number:** add a number.
  - **Location:** assign a location number.

☒ To assign a caller ID image or video, ringtone, or group, the contact must be saved to the phone's memory.

3. Press **<Save>** to save the contact.

## Group (Menu 2.3)

---

Use this menu to organise your contacts in caller groups.

### Creating a new caller group

1. Press **<Options>** and select **Create group**.
2. Enter a name for the group.
3. Select the caller ID line and set an image or a video clip.
4. Select the ringtone line and set a ringtone.
5. Press **<Save>** to save the group.

## Adding members to a caller group

1. Select a group.
2. Press **<Add>**.
3. Press [**z**] to select the contacts to be added.
4. Press **<Select>**.

## Managing caller groups

While viewing the group list, press **<Options>** to access the following options:

- **View:** display the members of the selected group.
- **Create group:** add a new group.
- **Edit:** change the group properties.
- **Send message:** send an SMS, MMS, or e-mail message to the group members you want.
- **Delete:** delete the selected group or all groups. Group members, however, will not be deleted from Phonebook.

## Speed dial (Menu 2.4)

---

Use this menu to assign a speed dial number (2 to 9) for 8 of your most frequently dialled numbers.

## Assigning speed dial numbers

1. Select a key location from **2** to **9**. Key **1** is reserved for your voicemail server.
2. Select a contact from the contact list.
3. Select a number, if the contact has more than one number.

## Managing speed dial entries

From the Speed dial screen, press **<Options>** to access the following options:

- **Add:** assign a number to an unassigned key.
- **View:** check the name and number assigned to a key.
- **Change:** assign a different number to a key.
- **Remove:** clear the speed dial setting for a key.

## Dialling speed dial numbers

In Idle mode, press and hold the appropriate key.

## My namecard (Menu 2.5)

---

Use this menu to create a name card and send it to other people.

## Saving your name card

The procedure for creating your name card is the same as the one for saving a phone number in the phone's memory. ► p. 32

## Using name card options

After saving your name card, press **<Options>** to access the following options:

- **Edit:** edit the name card.
- **Send via:** send the name card via SMS, MMS, e-mail, or Bluetooth.
- **Exchange namecard:** exchange name cards with another person via Bluetooth.
- **Delete:** delete the name card.

## Own number (Menu 2.6)

---

Use this feature to check your phone numbers, or to assign a name to each of the numbers. Changes made here do not affect the actual subscriber numbers on your SIM card.

## Management (Menu 2.7)

---

Use this menu to manage contacts in Phonebook.

- **Save new contact to:** select a default memory location for saving contacts. If you select **Always ask**, the phone will ask you to select a memory location each time you save a number.
- **Copy all to:** copy all of the contacts stored on the SIM card to the phone's memory, or vice versa.
- **Delete all:** delete all of the contacts from your phone's memory, your SIM card, or both.
- **Memory status:** check the number of contacts you have stored in the phone's memory and on the SIM card.

### Service number (Menu 2.8)

---

Use this menu to view the list of Service Dialling Numbers (SDN) assigned by your service provider, including emergency numbers and numbers for directory enquiries. This menu is available if your SIM card supports SDN.

1. Scroll to the number you want and press **<View>**.
2. Press **<Dial>** or [**\**].

### Applications (Menu 3)

Use this menu to play music files or play Java games. You can also use convenient features, such as voice recorder, alarm clock, calculator, converter, and stopwatch.

To access this menu, press **<Menu>** in Idle mode and select **Applications**.

### Voice recorder (Menu 3.1)

---

Use this menu to record voice memos. A voice memo can be up to one hour long.

#### Recording a voice memo

1. Press [**z**] to start recording.
2. Speak into the microphone.  
Press [**z**] to pause or resume recording.
3. Press **<Stop>** or [Down] to end recording. The voice memo is automatically saved.
4. Press [**z**] to review the voice memo, or [Up] to record a new memo.

## Playing a voice memo

1. From the Voice recorder screen, press **<Options>** and select **Go to My voice clips**.
2. Select a voice memo.

During playback, use the following keys:

Key	Function
<b>i</b>	Pauses or resumes playback.
Left	Returns to the previous memo. Moves backward in a memo when held down.
Right	Skips to the next memo. Skips forward in a memo when held down.
▲/▼	Adjusts the volume.
Down	Stops playback.

## Changing the recording mode

You can change the recording mode of the voice recorder. The maximum recording time is determined by this setting. Before recording a memo, press **<Options>** and select **Settings** → a recording mode:

- **Limit for multimedia message:** You can record a voice memo for adding to an MMS message.
- **Limit for email:** You can record a voice memo for adding to an e-mail.
- **Maximum 1 hour:** You can record a voice memo of up to one hour.

## Image editor (Menu 3.2)

Use this menu to edit your photos using various editing tools.

### Applying an effect

1. Press **<Options>** and select **New image** → **Open** or **Take photo**.
2. Select a photo or take a new photo.
3. Press **<Options>** and select **Effects** → an effect option.
4. Press **<Done>**.
5. Press **<Options>** and select **Save as**.
6. Enter a new file name and press **<OK>**.

### Transforming

1. Select a photo or take a new photo.
2. Press **<Options>** and select **Transform** → an option:

- **Resize:** change the photo size.
  - **Rotate:** rotate the photo 90 degrees.
  - **Flip:** flip the photo.
3. Press **<Done>**.
  4. Press **<Options>** and select **Save as**.
  5. Enter a new file name and press **<OK>**.

### Cropping

1. Select a photo or take a new photo.
2. Press **<Options>** and select **Crop**.
3. Move the cropping frame to the area of the image you want.

Press **<Options>** and select **Resize** to change the frame size.

4. Press **<Options>** and select **Done**.
5. Press **<Options>** and select **Save as**.
6. Enter a new file name and press **<OK>**.

### Adding visual features



You can decorate photos by adding a frame, an image, or a note.

1. Select a photo or take a new photo.
2. Press **<Options>** and select **Insert** → a feature type.

3. Select an item, or enter text to be inserted and press **<OK>**.
4. Adjust the position of the inserted item.
5. Press **<Done>**, or press **<Options>** and select **Done**.
6. Press **<Options>** and select **Save as**.
7. Enter a new file name and press **<OK>**.

### Merging a stamp effect

This editing tool allows you to make an outline stamp of a photo and then merge it with another photo. You can use this tool to create your own photo postcard by taking a photo of a handwritten message and merging it with a photo.

1. Select a photo or take a new photo.
2. Press **<Options>** and select **Merge stamp**. The background photo appears in the image box next to .
3. Press **<Options>** and select **Add image**.
4. Add a photo by selecting or taking a photo. The added photo appears in the image box next to . This will be the stamp.

5. Press <**Options**> and select **Merge**. The stamp photo is added to the background photo as an outline.
6. Press <**Options**> to access the following stamp edit options:
  - **Resize**: change the stamp size.
  - **Move**: change the position of the stamp.
  - **Rotate**: rotate the stamp.
  - **Stamp colour**: change the stamp colour.
  - **Shadow on**: apply a shadow to the stamp.
7. When you have finished, press <**Options**> and select **Done**.
8. Press <**Options**> and select **Save as**.
9. Enter a new file name and press <**OK**>.

### Java world *(Menu 3.3)*

Use this menu to access the embedded Java games and downloaded Java applications.

#### Accessing an embedded game

1. Select **My games** → a game.
2. If necessary, press [**⌘**].

### Using Java application options

From the application list, press <**Options**> to access the following options:

- **Start**: launch the selected application.
- **Move to**: move the application to another folder.
- **Delete**: delete the selected application or all applications, except for the embedded games.
- **Protection**: lock the application to protect it from being deleted, or unlock the application.
- **Details**: access the application properties.
- **Permissions**: set permission settings for services charging you additional costs, such as network access and SMS.
- **Upgrade**: upgrade the application to the latest version.
- **Send information via Text message**: send the URL containing the application via SMS.
- **Memory status**: access memory information for applications.



- **Settings:** select a connection profile to be used for applications requiring network access. You can also create or edit a profile. ► p. 88

### World clock (Menu 3.4)

---

Use this menu to set your local time zone and find out the current time in another part of the world.

#### Viewing world time

1. From the world map, press [Left] or [Right] to scroll to the city you want. As the time line moves, the time and date of the given zone display.
2. Press [**i**] to save the city as your local time zone.

#### Applying daylight saving time

1. From the world map, press <**Options**> and select **Apply daylight saving time**.
2. Press [**i**] to select the time zones you want.
3. Press <**Save**>.

### Alarm (Menu 3.5)

---

Use this menu to set alarms. The alert type for a normal alarm corresponds to the call alert type settings. A wake-up alarm is not affected by your sound settings.

#### Setting an alarm

1. Select the type of alarm.
2. Set each alarm option:
  - **Alarm:** activate the alarm.
  - **Alarm time:** enter the time for the alarm to ring.
  - **AM/PM:** set **AM** or **PM** in 12-hour format.
  - **Repeat:** select a repeat option.
  - **Alarm tone:** select an alarm tone.
3. Press <**Save**>.

#### Stopping an alarm

- For a non-wake-up alarm, press any key.
- For a wake-up alarm, press <**Confirm**> or [**i**].

Press any key, except for <**Confirm**> and [**i**], to cause it to sound again after 5 minutes. You can do this a maximum of 5 times.

## Deactivating an alarm

1. Select the alarm you want to deactivate.
2. Select **Off** on the **Alarm** line.
3. Press **<Save>**.

## Setting alarms to sound when the phone is off

From the Alarm screen, select **Auto power** → **On**.

If the phone is off when it is time for the alarm to sound, the phone switches on and sounds the alarm.

## Calculator (Menu 3.7)

Use this menu to perform basic arithmetic functions, such as addition, subtraction, multiplication, and division.

1. Enter the first number.
  - Press **<.(>** to insert a decimal point or bracket.
  - Press **[\*]** or **[#]** to move the cursor.
2. Press one of the Navigation keys to access the math function you want.
3. Enter the second number.

4. Press **[=]** to view the result.
5. If necessary, repeat from step 2 to continue the calculation.

## Converter (Menu 3.8)

Use this menu for common conversions, such as currency and temperature.

1. Select a converter.
2. Press **[Left]** or **[Right]** to select the original unit and press **[Down]**.
3. Enter the value to be converted and press **[Down]**.
  - Press **[\*]** to insert a decimal point.
  - Press **[#]** to change the temperature to above zero (+) or below zero (-).
4. Press **[Left]** or **[Right]** to select the unit to which you want to convert.

The equivalent value for the amount you entered displays.

- ☒ For the currency converter, you can view and set currency rates by pressing **<View rate>**.

### Timer (Menu 3.9)

---

Use this menu to set a period of time for the phone to count down. The phone sounds an alarm when the specified period of time expires.

#### Starting the timer

1. Press **<Set>**.
2. Enter the length of time you want to count down and press **<OK>**.
3. Press [**⏏**] to start counting down.

#### Stopping the timer

- Press any key when the timer rings.
- Press [**⏏**] on the Timer screen to stop the timer before it rings.

### Stopwatch (Menu 3.10)

---

Use this menu to measure elapsed time. The maximum time is 10 hours.

1. Press [**⏏**] to start the stopwatch.
2. Press [**⏏**] to check an interval. You can repeat this step for a total of 4 intervals.
- 3.

### Key management (Menu 3.11)

---

Use this menu to manage the licence keys you have acquired to activate media contents locked by DRM systems.

Press **<Options>** to access the following options:

- **View/Play:** open the corresponding media content.
- **Delete:** delete the selected licence key or all licence keys.
- **Go to My messages:** access the message that contains the media content.
- **Go to my item:** access the corresponding file folder.
- **Details:** access the properties of the licence key.

### Memo (Menu 3.12)

---

Use this menu to make memos of important things and manage them.

#### Creating a memo

1. Press **<Options>** and select **Create**.

2. Enter the memo text and press [**i**].

### Viewing a memo

Select the memo you want to view.

While viewing memo details, press **<Options>** to access the following options:

- **Edit:** change the memo text.
- **Send via:** send the selected memo via SMS, MMS, e-mail, or Bluetooth.
- **Delete:** delete the memo.
- **Memory status:** check how many memos you have created.

### SIM AT (Menu 3.13)

This menu is available if you use a SIM AT card that supports SIM Application Toolkit menus and provides additional services, such as news, weather, sports, entertainment, and location services. Available services may vary, depending on your service provider's plans. For details, see your SIM card instructions or contact your service provider.

## Browser (Menu 4)

The Wireless Application Protocol (WAP) browser on your phone allows you to access the wireless web. From the wireless web, you can access up-to-date information and a wide variety of media content, such as games, wallpapers, ringtones, and music files.

To access this menu, press **<Menu>** in Idle mode and select **Browser**.

### Home (Menu 4.1)

Use this menu to connect your phone to the network and load the homepage of the wireless web service provider. You can also press [**i**] in Idle mode.

### Navigating the web

To	Press
scroll through browser items	[Up] or [Down].
select a browser item	[ <b>i</b> ], or <b>&lt;Options&gt;</b> and select <b>Go to</b> .

To	Press
return to the previous page	< <b>Back</b> >, or < <b>Options</b> > and select <b>Go</b> → <b>Back</b> .
move to the next page	< <b>Options</b> > and select <b>Go</b> → <b>Forward</b> .

## Using page options

From any web page, press <**Options**> to access the following options:

- **Go to**: access the linked web page.
- **Go to homepage**: return to the homepage.
- **Keys to buy**: send a request for buying a licence key for a DRM file. This option will be available only when you access the web browser from a message containing a DRM file.
- **Enter URL**: enter a URL address manually.


- **Go**: move backward or forward through pages in history.
  - **Reload**: reload the current page with updated information.
  - **Bookmarks**: bookmark the current page or access the bookmark list.
  - **Send URL**: send the URL of the current page via SMS.
  - **To SmartFit view/To Desktop view**: change the display mode of the browser.
  - **Save**: save the selected image or page.
  - **Page details**: access the page properties.
  - **Browser options**: change the various settings for the browser.
- Cache**: change the cache mode or clear the cache. The cache is a temporary memory site that stores recently accessed web pages.
- Cookies**: change the cookie acceptance mode or delete cookies. Cookies are pieces of personal information sent to a web server while navigating the web.

**Preferences:** change the browser display and sound settings.

**Certificates:** access certificate information.

**About browser:** access version and copyright information about the browser.

## Exiting the browser

Press [>] to end the network connection and close the browser.

## Enter URL (Menu 4.2)

---

Use this menu to manually enter a URL address and access the associated web page.

You can add the entered URL to the bookmark list by selecting **Add bookmark**.

## Bookmarks (Menu 4.3)

---

Use this menu to save URL addresses in order to quickly access web pages.

## Adding a bookmark

1. Press <**Add**>. If a bookmark has already been saved, press <**Options**> and select **Add bookmark**.
2. Enter a title for the bookmark and press [Down].
3. Enter a URL address and press <**Save**>.

## Accessing a bookmarked page

Selecting a bookmark item launches the web browser and accesses the associated web page.

## Using bookmark options

From the Bookmarks screen, press **<Options>** to access the following options:

- **Go to:** access the bookmarked web page.
- **Go to homepage:** access the homepage.
- **Enter URL:** enter a URL address manually.
- **Edit bookmark:** edit the URL address and title of the bookmark.
- **Add bookmark:** add a new bookmark.
- **Send URL:** send the URL address of the bookmark via SMS.
- **Delete:** delete the selected bookmark or all bookmarks.

## Saved pages *(Menu 4.4)*

---

You can access the list of pages you have saved while online.

If you select a link on the page, the phone switches to online to access the linked page.

## History *(Menu 4.5)*

---

You can access the list of pages you have accessed recently.

Select a URL from the list to access the corresponding web page.

## Clear cache *(Menu 4.6)*

---

Use this menu to clear information stored in the cache, a temporary memory site that stores recently accessed web pages.

## Browser settings *(Menu 4.7)*

---

Use this menu to select a connection profile to be used for accessing the wireless web. You can also create or edit a profile. ► p. 88

## Streaming settings *(Menu 4.8)*

Use this menu to select a connection profile to be used for accessing your service provider's streaming service. This menu may not be shown depending on your service provider. You can also create or edit a profile. ► p. 88

## Messages *(Menu 5)*

Use the **Messages** menu to send and receive text messages, multimedia messages, and e-mails. You can also access push messages and cell broadcast messages.

To access this menu, press <**Menu**> in Idle mode and select **Messages**.

### Create message *(Menu 5.1)*

Use this menu to create and send messages.

#### Text message *(Menu 5.1.1)*

Short Message Service (SMS) allows you to send or receive text messages that may include simple pictures, animated images, and melodies.

## Creating and sending an SMS message

1. Enter your message and press [**✓**].

- ☒ • The maximum number of characters allowed in a message varies by service provider. If your message exceeds the maximum number of characters, the phone will split the message.
- You can use various options by pressing <**Options**>.
  - next section

2. Enter a destination number.

To send the message to more than one recipient, fill in additional destination fields.

3. Press [**✓**] to send the message.

### Using options while composing an SMS message

While composing a message, press <**Options**> to access the following options:

- **Send only:** just send the message.
- **Save and send:** send the message and then save it in the **Sent box** folder.



- **Preview as vivid message:** view the message in 3D view mode. The phone converts message text to 3D vivid graphics. This option is available only when the message consists of a single page.
- **Insert:** add a template, Phonebook entry, or bookmark.
- **Add image/Add animation/Add melody:** attach a simple image, an animated image, or a melody.
- **Attach:** attach a Phonebook entry as a name card or a calendar data as a data format attachment.
- **Save in:** save the message in another message folder.
- **Input language:** change the language to be used in T9 input mode.
- **Text style:** change the text attributes.
- **Input method:** change the text input mode.

### Multimedia message (Menu 5.1.2)

Multimedia Message Service (MMS) delivers messages containing a combination of text, image, video, and audio, from phone to phone or from phone to e-mail.

#### Creating and sending an MMS message

1. Select the **Subject** line.

☒ You can use various options by pressing **<Options>** in each field.  
▶ next section

2. Enter the message subject and press [**✓**].
3. Select the **Image and video** line.
4. Select **Add image** or **Add video** and add an image or a video clip.

☒

- The maximum size allowed for a message can differ, depending on your service provider.
- Depending on the file type or DRM (Digital Rights Management) system, some files may not be able to be forwarded.

5. Select the **Sound** line.
6. Select **Add sound** and add a sound clip.

7. Select the **Message** line.
8. Enter the message text and press [**z**].
9. When you have finished, press **<Options>** and select **Send**.
10. Enter a phone number or an e-mail address.

To send the message to more than one recipient, fill in additional destination fields.

11. Press [**z**] to send the message.

### Using options while composing an MMS message

While composing a message, press **<Options>** to access the following options:

- **Add**: add the message subject or message text.
- **Add image/Add video/Add sound**: add a image, video clip, or sound clip.
- **Change image/Change video/Change sound**: replace an added item.
- **Add memory card**: add a file stored on a memory card, if inserted.
- **Edit**: edit the message subject or text.

- **Preview**: view the message as it will be shown on the recipient's phone.
- **View**: open the selected attachment.
- **Send**: send the message.
- **Save in**: save the message in another message folder.
- **Add page**: add pages. Move to each page by pressing [Left] or [Right].
- **Delete page**: delete an added page.
- **Edit page**: change the duration of page display or move the page forward among the other pages.
- **Attach**: attach a Phonebook entry as a name card, a calendar data as a data format attachment, or a document file stored in the **Other files** folder.
- **Remove subject/Remove message/Remove media/Remove sound/Remove**: remove an added item.

### Email (Menu 5.1.3)

You can create and send e-mails that include text, audio, and images.

### Creating and sending an e-mail

1. Select the **Subject** line.

☒ You can use various options by pressing **<Options>** in each field.  
▶ next section

2. Enter the e-mail subject and press [**i**].
3. Select the **Message** line.
4. Enter the e-mail text and press [**i**].
5. Select the **File attached** line.
6. Add media files or document files stored in the **Other files** folder.

☒ Depending on the file type or DRM (Digital Rights Management) system, some files may not be able to be forwarded.

7. When you have finished, press **<Options>** and select **Send**.
8. Enter an e-mail address.  
To send the e-mail to more than one recipient, fill in additional destination fields.
9. Press [**i**] to send the e-mail.

### Using options while composing an e-mail

While composing an e-mail, press **<Options>** to access the following options:

- **Add:** add the subject of your e-mail or e-mail text.
- **Edit:** edit the subject or text.
- **Add image/Add video/Add sound/Add music:** add media files stored in the phone's memory.
- **Add other files:** add document files stored in the **Other files** folder.
- **Memory card:** add files stored on a memory card, if inserted.
- **View/Play:** open an attached file.
- **Send:** send the e-mail.
- **Save in:** save the e-mail in another message folder.
- **Attach:** attach Phonebook entries as name cards or calendar data as data format attachments.

- **Remove subject/Remove message/Remove attachment:** remove an added item.
- **Remove all attachments:** delete all attached files.

## My messages (Menu 5.2)





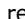


Use this menu to access messages you have received, sent, or which have failed in sending.




### Inbox (Menu 5.2.1)

This folder stores all of the messages you have received, except for e-mails.

### Viewing a message

The following icons may appear on the message list to show the message type:

-  SMS
-  MMS
-  MMS notification (  : Being retrieved,  : Failed to be retrieved)
-  Voicemail
-  Push message from web servers or

-  Configuration message, containing network parameters from your service provider
-  CB (Cell broadcast) message from your service provider
-  Delivery report for your sent messages
  - ☒ Depending on the DRM (Digital Rights Management) system, messages having web content may not be able to be forwarded.
  - A ! icon next to a message means that the message is of high priority. A grey-coloured message icon indicates low priority.

### Using message options

While viewing a message, press <**Options**> to access the following options:

### SMS messages

- **Reply via text message:** reply to the sender via SMS.
- **Reply via multimedia message to:** reply to the sender via MMS.

- **Forward:** forward the message to other people.
- **Zoom view:** reduce the font size so that you can view more text on one screen.
- **View as vivid message/View as:** view the message in 3D view mode or switch back to normal view mode. This option is available only when the message consists of a single page.
- **Delete:** delete the message.
- **Move to phone/Move to SIM:** move the message between the SIM card and the phone's memory.
- **Cut address:** extract URL addresses, e-mail addresses, or phone numbers from the message.
- **Cut media:** save media content from the message to your phone's memory.
- **Lock/Unlock:** lock the message to protect it from being deleted, or unlock the message. You can protect only those messages stored in the phone's memory.
- **Add to Block list:** add the sender's number to the block list to reject the messages from the sender.

### **MMS messages**

- **Retrieve:** retrieve the MMS message from the MMS server.
- **Reply via text message:** reply to the sender via SMS.
- **Reply via multimedia message to:** reply to the sender via MMS.
- **Forward:** forward the message to other people.
- **Delete:** delete the message.
- **Cut address:** extract URL addresses, e-mail addresses, or phone numbers from the message.
- **Attached items:** save media content from the message to your phone's memory.
- **Lock/Unlock:** lock the message to protect it from being deleted, or unlock the message.
- **Details:** access the message properties.

### **Configuration messages**

- **Install:** apply the configuration specified in the message to your phone.
- **Delete:** delete the message.

- **Lock/Unlock:** lock the message to protect it from being deleted, or unlock the message.

### Push messages

- **Go to URL:** connect to the URL address specified in the message.
- **Cut address:** extract URLs, e-mail addresses, or phone numbers from the message.
- **Delete:** delete the message.
- **Lock/Unlock:** lock the message to protect it from being deleted, or unlock the message.

### Broadcast messages

- **Save:** save the message to the phone's memory.
- **Cut address:** extract URL addresses, e-mail addresses, or phone numbers from the message.
- **Delete:** delete the message.

### Delivery reports

- **Cut address:** extract URL addresses, e-mail addresses, or phone numbers from the report.

- **Delete:** delete the report.
- **Lock/Unlock:** lock the report to protect it from being deleted, or unlock the report.

### Drafts (Menu 5.2.2)



This folder stores messages you have saved to send at a later time.

When you select a message, it opens in Edit mode so that you can edit and send the message.

### Outbox (Menu 5.2.3)

This folder stores messages that the phone is attempting to send or has failed to send.

The following icons are available to show the message status:

-  Being sent
-  Failed to be sent

While viewing a message, press **<Options>** to access the following options:

- **Send again:** retry sending the message.
- **Forward:** forward the message to other people.

- **Zoom view:** reduce the font size so that you can view more text on one screen.
- **Cut address:** extract URLs, e-mail addresses, or phone numbers from the message.
- **Delete:** delete the message.
- **Move to phone/Move to SIM:** move the message between the SIM card and the phone's memory.
- **Lock/Unlock:** lock the message to protect it from being deleted, or unlock the message.
- **Details:** access the message properties.

### Sentbox (Menu 5.2.4)

This folder stores messages that you have sent.

While viewing a message, press <**Options**> to access the following options:

- **Forward:** forward the message to other people.
- **Zoom view:** reduce the font size so that you can view more text on one screen.

- **Cut address:** extract URLs, e-mail addresses, or phone numbers from the message.
- **Delete:** delete the message.
- **Move to phone/Move to SIM:** move the message between the SIM card and the phone's memory.
- **Lock/Unlock:** lock the message to protect it from being deleted, or unlock the message.
- **Details:** access the message properties.



### Email inbox (Menu 5.2.5)


This folder stores e-mails that you have received.


### Viewing an e-mail

1. Select an e-mail account.
2. Press <**Yes**> when **Check for new email** displays. The phone checks the e-mail server and downloads new e-mails.

The following icons may appear on the list to show the e-mail status:

-  Retrieved from the server
-  Being retrieved

-  Failed to be retrieved

 A ! icon next to a message means that the message is of high priority. A grey-coloured message icon indicates low priority.

3. Select an e-mail or a header.
4. Press [Left] or [Right] to view other pages in the e-mail.
5. Press [\*] or [#] to view the previous or next e-mail.

### Using e-mail options

While viewing the e-mail or header, press <**Options**> to access the following options:

- **Retrieve:** retrieve the body of the e-mail from the e-mail server.
- **View/Play:** open the selected attachment.
- **Save to my files:** save the selected attachment to the phone's memory.
- **Reply to sender:** send a reply to the sender.
- **Reply to all:** send a reply to the sender, or to the sender and all of the other recipients.

- **Forward:** forward the e-mail to other people.
- **Delete:** delete the e-mail.



- **Add to filtering list:** add the sender's e-mail address or subject to the Block list to reject e-mails from that address or containing that subject.
- **Cut address:** extract URLs, e-mail addresses, or phone numbers from the e-mail.
- **Attached items:** save the attached files from the e-mail to your phone's memory.
- **Lock/Unlock:** lock the e-mail to protect it from being deleted, or unlock the e-mail.
- **Details:** access the e-mail properties.

### My folders (Menu 5.2.6)

Use this menu to create new folders and organise your messages.

#### Creating a folder

1. Press <Yes>.
2. Enter a folder name and press <OK>.

#### Using folder options

On the folder list, press <Options> to access the following options:

- **Open:** open the selected folder.
- **Create folder:** add a new folder.

- **Rename folder:** change the folder name.
- **Delete:** delete the selected folder.

### Templates (Menu 5.3)

---

Use this menu to make and use templates of frequently used messages or passages.

#### Text message templates (Menu 5.3.1)

You can create SMS templates with the sentences you use frequently so that you can retrieve and insert them when composing an SMS message.

#### Creating a template

1. Select an empty location.
2. Enter a message and press <OK>.

#### Using template options

From the template list, press <Options> to access the following options:

- **Edit:** edit the selected template.
- **Send message:** create and send a new message using the selected template.
- **Delete:** delete the selected template.
- **Add new:** add a new template.

## Multimedia message templates

(Menu 5.3.2)

You can access embedded MMS templates or ones you have saved so that you can use them when composing an MMS message.

From the template list, press **<Options>** to access the following options:

- **View:** open the selected template.
- **Edit:** create and send a new message using the selected template.
- **Send message:** send the selected template.
- **Delete:** delete the selected template or all templates, except for the embedded ones.

## Delete all (Menu 5.4)

Use this menu to delete messages in each message folder all at once.

1. Press [**2**] to select the message folders to be cleared.

Pressing the key twice displays the message types so that you can specify the ones to be cleared.

2. Press **<Delete>**.

3. Press [**2**] to select the check box to delete protected messages, and then press **<Yes>**.

4. Press **<Yes>** to confirm the deletion.

## Settings (Menu 5.5)

Use this menu to set up various options for using the messaging service.

### Text messages (Menu 5.5.1)

You can configure SMS settings.

- **Sending options:** set up the options for sending SMS messages:

**Reply path:** allow recipients to reply to you through your SMS server.

**Delivery report:** set the network to inform you when your messages have been delivered.

**Character support:** select a character encoding type. When you select **Automatic**, the phone switches the encoding type from GSM-Alphabet to UniCode if you enter a Unicode character.

Use of Unicode encoding will reduce the maximum number of characters in a message to about half. If this menu is not shown, your phone provides automatic character encoding by default.

**Bearer selection:** select either **GSM** or **GPRS preferred**, depending on your network.

- **Receiving options:** activate 3D view mode for displaying received messages. The phone will convert message text to 3D vivid graphics. This option is available only when the message consists of a single page.
- **Block list:** store the phone numbers from which you want to reject messages.
- **Current profile:** check or select an SMS setting profile.
- **Profile settings:** set the properties of each profile.

**Service centre:** store or change the number of your SMS server.

**Default destination:** enter the default destination. It will be automatically entered on the recipient list.

**Default type:** set the default message type. The network can convert the messages into the selected format.

**Default validity:** set the length of time your messages are stored in the SMS server.

**Setting name:** enter a profile name.

### Multimedia messages (Menu 5.5.2)

You can configure MMS settings.

- **Sending options:** set up the options for sending MMS messages:

**Delivery report:** set the network to inform you when your messages have been delivered.

**Hide address:** set your address to be hidden from the recipient's phone.

**Read reply:** send a read-reply request along with your messages.

**Priority:** set the priority level of messages.

**Expiry date:** set the length of time messages are stored in the MMS server.

**Delivery time:** set a time delay before messages are sent.

**Outgoing message size:** select a maximum size allowed for composing messages.

- **Retrieving options:** set up the options for receiving MMS messages:

**Reject unknown senders:** reject messages from unknown senders.

**Allow adverts:** accept advertisements.

**Allow information:** accept information messages.

**Allow report:** set the network to inform the sender when a message has been delivered to you.

**Recep. in home network:** determine if your phone retrieves new messages automatically when you are in your home service area.

**Reception when abroad:** determine if your phone retrieves new messages automatically when you are roaming on another network.

Reception within home network or abroad has the following options:

- **Manual:** the phone displays notifications. Use the **Retrieve** option to manually download new messages.
- **Automatic:** the phone automatically retrieves messages from the server.
- **Reject:** the phone rejects all messages.

- **Block list:** store phone numbers and e-mail addresses from which you want to reject messages.
- **Multimedia message profiles:** select a connection profile to be used for MMS. You can also create or edit a profile.  
▶ p. 88

### Emails (Menu 5.5.3)

You can configure e-mail settings.

- ☒ You cannot change e-mail profile and account settings while an e-mail is being sent or retrieved.

- **Sending options:** set up the options for sending e-mails:  
**Keep a copy:** leave the copies of your e-mails in the **Sentbox** folder after sending.

**Send delivery receipt:** set the network to inform you when your e-mails have been delivered.

**Send read receipt:** send a read-reply request along with e-mails.

**Reply-To address:** set an e-mail address to receive read-reply messages from recipients.

**Priority:** select the priority level of e-mails.

**Attach your vCard:** allow your contact information to be attached to e-mails. You must first create your name card. ► p. 34

**Add signature:** attach your name, phone number, a simple memo, or a tag line to your e-mails.

**Edit name:** edit the name in your signature.

**Edit number:** edit the phone number in your signature.

**Edit note:** edit the tag line in your signature.

- **Receiving options:** set up the options for receiving e-mails:

**Check interval:** determine how often the phone checks the server for incoming e-mails. If you select **Do not notify**, use the **Check for new email** option to receive new e-mails manually.

**Send read receipt:** determine whether or not the phone sends a read-reply for incoming e-mails. If you select **Reply reminder**, the phone asks you to send a read-reply.

**Download limit:** determine the maximum size for incoming e-mails. Your phone will reject e-mails that exceed the specified size.

**Download method:** set whether the phone downloads e-mail headers only or e-mail headers and bodies both.

**Keep in server:** leave copies of e-mails on the e-mail server after retrieving.

**Download email latest first:** set the phone to download the most recent e-mails first.

- **Block list:** specify e-mail addresses or subjects you want to reject.
- **Email accounts:** set up an e-mail account and select an account to be used.

**Current account:** check or select an account.

**Account settings:** configure e-mail accounts using different e-mail servers. Set the options for each account:

- **Account name:** enter a name for the currently selected account.
- **User name:** enter a user name.
- **Email address:** enter your e-mail address.
- **SMTP server:** enter the IP address or host name of the outgoing e-mail server.
- **SMTP port:** enter the SMTP port number.

- **Connect to POP3 server first/ Connect to IMAP4 server first:** connect to the POP3 or IMAP4 server before connecting to the SMTP server to send e-mails.

- **Protocol type:** select the protocol for the incoming e-mail server. The remaining options depend on the protocol type setting.

*When the protocol type is **POP3**:*

- **POP3 server:** enter the IP address or host name of the server that receives your e-mail.
- **POP3 port:** enter the POP3 port number.
- **User ID:** enter the POP3 user name.
- **Password:** enter the POP3 password.
- **Use SMTP authentication:** enable SMTP authentication, which requires the user to login before sending e-mails.
- **Same as POP3:** select if you want the SMTP server to have the same parameters as the POP3 server.

- **SMTP user ID:** enter the SMTP user name.
- **SMTP password:** enter the SMTP password.
- **APOP login:** connect to the server by using the APOP login scheme.
- **Email retrieval limit(1-100):** set the number of headers you will retrieve from the server.
- **Secure connection:** use a secure connection for the e-mail service.

*When the protocol type is **IMAP4**:*

- **IMAP4 server:** enter the IP address or host name of the server that receives your e-mail.
- **IMAP4 port:** enter the IMAP4 port number.
- **User ID:** enter the IMAP4 user name.
- **Password:** enter the IMAP4 password.
- **Use SMTP authentication:** enable SMTP authentication, which requires the user to login before sending e-mails.

- **Same as IMAP4:** select if you want the SMTP server to have the same parameters as the IMAP4 server.
- **SMTP user ID:** enter the SMTP user name.
- **SMTP password:** enter the SMTP password.
- **Include attachments:** select this option to receive attachments with e-mails.
- **Email retrieval limit(1-100):** set the number of headers you will retrieve from the server.
- **Secure connection:** use a secured connection for e-mail service.
- **Email profile:** select a connection profile to be used for e-mail services. You can also create or edit a profile. ► p. 88

### **Push messages** (Menu 5.5.4)

You can change the settings for receiving push messages from the wireless web server.

- **Receive:** set how your phone receives push messages. If you select **Black list**, the phone will not accept messages from the specified addresses on the Black list.
- **Black list:** manage blocked server addresses.

### Broadcast messages (Menu 5.5.5)

You can change the settings for receiving broadcast messages.

- **Receive:** select to receive broadcast messages, or not.
- **Channel list:** indicate the channels from which you wish to receive broadcast messages. Please contact your service provider for further details.
- **Language:** select the preferred languages in which broadcast messages display.

### Memory status (Menu 5.6)

Use this menu to view the amount of memory currently in use in each message folder.

## My files (Menu 6)

The **My files** menu allows you to access images, videos, music files, and sound files stored in the phone's memory or on a memory card.




To access this menu, press <**Menu**> in Idle mode and select **My files**.

### Tips for Digital Rights Management


As a result of the Digital Rights Management (DRM) system, some of the media items you download from the Internet or receive by MMS may require a licence key to access them.

You can acquire the key from the website which owns the rights to the content; use the **Activate key** option.

Note the following icons on the list:

-  : Forwardable item with a valid key.
-  : Forwardable item without a valid key.
-  : Unforwardable item with a valid key.



-  : Unforwardable item without a valid key.

Your service provider supports only count-based or unlimited-access DRM files.

### Images (Menu 6.1)

---

This menu displays photos you have taken and images you have downloaded, received in messages, or imported from a computer.

#### Viewing an image

1. Select an image folder.
2. Select an image.

#### Viewing a slide show

You can view your photos as a slide show, a sequential presentation of each photo in the current folder.

1. Select **My photos**.
2. Press <**Options**> and select **Slide show**.
3. Select an interval option.  
The slide show begins.
4. Press <**Stop**> to stop the slide show.

### Using image options

While viewing an image, press <**Options**> to access the following options:

- **List**: return to the image list.
- **Send via**: send the file via MMS, e-mail, or Bluetooth.
- **Set as**: set the image as wallpaper for the main display or as a caller ID image for a Phonebook entry.
- **Edit**: edit the image using the Image editor if it is a photo taken by the camera on the phone. ► p. 36
- **Activate key**: get a licence key when the key for the selected DRM file expires.
- **Delete**: delete the file.
- **Rename**: change the file name.
- **Move to**: move the file to another folder or to a memory card.
- **Copy to memory card**: copy the file to a memory card.
- **Visible to Bluetooth**: share the file or the files you want with other Bluetooth devices.

- **Lock/Unlock:** lock the file to protect it from being deleted, or unlock the file.
- **Print via Bluetooth:** print the image by connecting the phone to a printer via Bluetooth. Some printers may not be compatible with the phone.
- **Details:** access the file properties.
- **Key management:** manage the licence keys you have acquired.

## Videos (Menu 6.2)

This menu displays video clips you have recorded, downloaded, received in messages, or imported from a computer.

- ☒ Video clips recorded on other devices, such as camcorders, may not play correctly.

### Playing a video clip

1. Select a video folder.
2. Select a video clip.

During playback, use the following keys:

Key	Function
<b>i</b>	Pauses or resumes playback.

Key	Function
Left	Returns to the previous file. Moves backward in a file when held down.
Right	Skips to the next file. Moves forward in a file when held down.
▲/▼	Adjusts the volume.
Down	Stops playback.

### Using video options

After playback, press <**Options**> to access the following options:

- **List:** return to the video list.
- **Send via:** send the file via MMS, e-mail, or Bluetooth.
- **Set as:** set the video clip, if saved as a 3gp file, as wallpaper for the main display or caller ID image for a Phonebook entry.
- **Activate key:** get a new licence key when the key for the selected DRM file expires.

- **Delete:** delete the file.
- **Rename:** change the file name.
- **Move to:** move the file to another folder or to a memory card.
- **Copy to memory card:** copy the file to a memory card.
- **Visible to Bluetooth:** share the selected file or the files you want with other Bluetooth devices.
- **Lock/Unlock:** lock the file to protect it from being deleted, or unlock the file.
- **Details:** access the file properties.
- **Key management:** manage the licence keys you have acquired.

## Music (Menu 6.3)

---

This menu displays music files you have downloaded or imported from a computer.

Select a file. The music player opens.

► p. 41



When you play a file from this menu, without first adding it to the play list in the music player, background play is not supported.

## Sounds (Menu 6.4)

---

This menu displays voice memos you have recorded, and sound files you have downloaded, received in messages, or imported from a computer.

### Playing a sound clip

1. Select a sound folder.
2. Select a sound clip. For a voice memo, see **Voice recorder**. ► p. 36

### Using sound options

While playing a sound clip, press **<Options>** to access the following options:

- **List:** return to the sound list.
- **Send via:** send the file via MMS, e-mail, or Bluetooth.
- **Set as:** set the file as your ringtone or as a ringtone for a Phonebook entry.
- **Activate key:** get a new licence key when the key for the selected DRM file expires.
- **Delete:** delete the file.
- **Rename:** change the file name.
- **Move to:** move the file to another folder or to a memory card.
- **Copy to memory card:** copy the file to a memory card.
- **Visible to Bluetooth:** share the selected file or the files you want with other Bluetooth devices.
- **Lock/Unlock:** lock the file to protect it from being deleted, or unlock the file.
- **Details:** access the file properties.
- **Key management:** manage the licence keys you have acquired.

## Other files (Menu 6.5)

Use this menu to view, without corruption, various document files and files stored in the phone's memory. Available file formats are \*.doc, \*.xls, \*.ppt, \*.pdf, and \*.txt.

## Viewing a document

Select a file. Picsel File Viewer runs to open the document.



- Depending on the file size or memory capacity of Picsel File Viewer, some files may not open properly.
- If a document file contains languages unsupported by Picsel File Viewer, the content of the document will not display correctly.

Use the following keys to view the document:

Key	Function
Up/Down/ Left/Right	Pans around the page.

Key	Function
<b>i</b>	Fits the document to the page size.
<b>▲/▼</b>	Zooms in or out.
<b>1</b>	Searches forward through the document for the text you want.
<b>2</b>	Returns to the first page.
<b>3</b>	Searches backward through the document for the text you want.
<b>4</b>	Returns to the previous page.
<b>5</b>	Rotates the document.
<b>6</b>	Moves to the next page.
<b>8</b>	Moves to the last page.
<b>9</b>	Shows or hides the map of the current page.

Key	Function
<b>#</b>	Changes the display to Full screen view or Normal screen view.

## Using document options

While viewing a document, press **<Options>** or **<📄>** to access the following options:

- **Full screen view/Normal view:** view the document on a full screen, or return to Normal view mode.
- **Show thumbnail/Hide thumbnail:** display or hide the map of the current page.
- **Zoom:** zoom in or out.
- **Fit to:** fit the document to the page size, screen width, or screen height.
- **Go to:** move to another page of the document.
- **Search word:** search for text in the document.
- **Rotate:** rotate the document.

- **Screen panning/Normal panning:** change the panning mode to by screen or by preset pixel.
- **Flow mode:** switch the screen to Flow mode. The text is rearranged for easy viewing in a text file (\*.txt). You can scroll through the text only by pressing [Up] or [Down].
- **Hide controller/Show controller:** hide or show the shortcut tool bar of the file viewer.
- **Send via:** send the file via MMS, e-mail, or Bluetooth.
- **Move to memory card:** move the file to a memory card.
- **Copy to memory card:** copy the file to a memory card.
- **Delete:** delete the selected file.
- **Rename:** change the file name.
- **Visible to Bluetooth:** share the file or the files you want with other Bluetooth devices.
- **Lock/Unlock:** lock the file to protect it from being deleted, or unlock the file.
- **Details:** access the file properties.

- **Shortcuts:** view the functions of the keys you can use in Picsel File Viewer.

### Memory card (Menu 6.6)

---

Use this menu to access the files stored on a memory card. This menu is shown only when a memory card is inserted into the phone.

- ☒ Your phone is preset to use FAT16-formatted memory cards. If you insert a FAT32-formatted memory card, the phone will ask you to reformat the memory card. If you do not, you will not be able to access the card from the phone.

### Memory status (Menu 6.7)

---

Use this menu to view memory information for media items in the phone's memory or on a memory card. For the phone's memory, press [Left] or [Right] to view the memory status by size or number of items.

## Calendar (Menu 7)

The **Calendar** menu enables you to keep track of your schedule.

To access this menu, press <**Menu**> in Idle mode and select **Calendar**.

### Selecting a day on the calendar

---

When you enter the **Calendar** menu, the calendar in Month view appears with today's date indicated by a grey box.

- Press [Left] or [Right] to move by day.
- Press [Up] or [Down] to move by week.
- Press [▲/▼] to move by month.

### Creating an item

---

You can store appointments, anniversaries, and tasks on the calendar. More than one item per day can be stored.

### Entering an appointment

1. Select a date on the calendar.
2. Press <**Options**> and select **Create** → **Appointment**.

### 3. Enter information or change the settings:

- **Subject:** enter a title for the appointment.
- **Details:** enter the appointment details.
- **Start date** and **Start time:** enter the starting date and time for the appointment.
- **AM/PM:** select **AM** or **PM** in 12-hour time format.
- **End date** and **End time:** enter the ending date and time for the appointment.
- **AM/PM:** select **AM** or **PM** in 12-hour time format.
- **Location:** enter information about the appointed location.
- **Alarm:** set an alarm for the appointment.
- **Before:** set how long before the appointment the alarm is to alert you.
- **Alarm tone:** select an alarm tone.
- **Repeat:** set the appointment to recur and select a repeat unit.

- **Until:** set the ending date, if the appointment will recur.

### 4. Press <**Save**> to save the appointment.

### Entering an anniversary

#### 1. Select a date on the calendar.

#### 2. Press <**Options**> and select **Create** → **Anniversary**.

### 3. Enter information or change the settings:

- **Occasion:** enter information about the anniversary.
- **Date:** enter the date.
- **Alarm:** select to set an alarm for the anniversary.
- **Before:** set how long before the anniversary the alarm is to alert you.
- **Alarm time:** enter the time for the alarm to ring.
- **AM/PM:** select **AM** or **PM** in 12-hour time format.
- **Alarm tone:** select an alarm tone.
- **Repeat every year:** set the phone to remind you of the anniversary every year.

### 4. Press <**Save**> to save the anniversary.






## Entering a task

1. Select a date on the calendar.
2. Press <**Options**> and select **Create** → **Task**.
3. Enter information or change the settings:
  - **Task**: enter information about the task.
  - **Start date**: enter the starting date.
  - **Due date**: enter the ending date.
  - **Select priority**: select a priority level.
4. Press <**Save**> to save the task.

## Consulting the calendar

---

Once you have created items, the type icons and the number of items for a specific day appear at the bottom of the calendar.

-  Appointment
-  Anniversary
-  Task

## Viewing an item

1. Select a date on the calendar to display the items for the day.
2. Select an item to view its details.

3. Press [Left] or [Right] to access the other items scheduled for the selected day.

While viewing an item, press <**Options**> to access the following options:

- **Edit**: edit the item.
- **Create**: add a new item.
- **Send via**: send the item via SMS, MMS, e-mail, or Bluetooth.
- **View by**: change the view mode of the calendar. ► p. 72
- **Delete**: delete the item.
- **Memory status**: access memory information for the items stored on the calendar.

## Using calendar options

On the calendar, press <**Options**> to access the following options:

- **View by**: change the view mode of the calendar. ► next section
- **Create**: add a new item.
- **Go to**: select today's date or enter a specific date.

- **Event list:** sort items by type of item.
- **Delete:** delete the items stored on the calendar by using various deleting options.

☒ You can delete recurring items in Day view only.

- **Missed alarm events:** view items whose alarms you have missed.
- **Memory status:** access memory information for the items stored on the calendar.



## Viewing items in a different mode


You can change the calendar display to Day view or Week view. Press <**Options**> and select **View by** → a view mode.

### Day view

You can view items for the selected date. Select an item to view its details.

The following icons may display to indicate the item status:

-  Alarm set
-  Recurring item

-  Task priority (Red: high, Blue: normal, Grey: low)
- ☒ Completed task

### Week view

You can view items for the selected week. A cell on the timetable indicates the presence of a schedule item. Select a cell in the day you want.

## Camera (Menu 8)

You can use the camera module embedded in your phone to take photos and record videos.

To access this menu, press <**Menu**> in Idle mode and select **Camera**.


- ☒ • Do not take photos of people without their permission.
- Do not take photos in a place where cameras are not allowed.
  - Do not take photos in a place where you may interfere with another person's privacy.

## Taking a photo

You can take photos in various modes. The camera produces JPEG photos.

- ☒ When you take a photo in direct sunlight or in bright conditions, shadows may appear on the photo.


## Taking a photo

1. Access the **Camera** menu to turn on the camera.
2. Make any desired adjustments.
  - Press  to access camera options. ► next section
  - Use the keypad to change the camera settings or switch to other modes. ► p. 74
3. Press [**z**] to take a photo. The photo is automatically saved in the **My photos** folder.

4. To	Press
access photo options	< <b>Options</b> >. ► p. 75
send the photo by MMS	[ <b>z</b> ]. ► p. 47

4. To	Press
delete the photo	[ <b>C</b> ] and then < <b>Yes</b> >.
return to Capture mode	< <b>Preview</b> > or < <b>Back</b> >.

## Using camera options in Capture mode

In Capture mode, press  to access the following options:

- **Record video:** switch to Record mode.
- **Shooting mode:** take a photo in the following modes:
  - Single shot:** take a photo in Normal mode. You can select whether or not the camera automatically saves a photo.
  - Multi-shot:** take a series of action stills. You can select the number of photos the camera will take and the shooting speed.
  - Mosaic shot:** take several stills and save them in one frame. You can select the layout.
- **Effects:** change the colour tone or apply a special effect.

- **Frames:** apply a decorative frame.
- **Timer:** set a time delay before the camera takes a photo.
- **Go to My photos:** access the **My photos** folder.
- **Camera settings:** change the default settings for taking a photo.  
**Size:** select an image size.  
**Quality:** select an image quality setting.  
**Viewfinder:** select a preview screen.  
**Scene programs:** set whether or not to use Night shot mode.  
**Shutter sound:** select the sound that you hear when you press the shutter release key, [z].  
**Zoom sound:** turn the sound effect for zooming on or off.  
**Brightness sound:** turn the sound effect for brightness adjustment on or off.  
**White balance:** adjust the colour balance of the image. You can make your photo appear warmer or cooler.

**ISO:** change the ISO setting, which controls the sensitivity of your camera. For low light situations, select a higher ISO number. The higher the ISO number, the faster the camera shutter functions and the more sensitive the camera is to light. Higher ISO settings may bring some distortion to an image.

- **Camera shortcuts:** view the functions of the keys you can use in Capture mode.

### Using the keypad in Capture mode

You can use the keypad to customise your camera settings in Capture mode.

Key	Function
Left/Right	Adjusts the brightness.
Up/Down	Zooms in or out.
▲	Flips the image vertically.
▼	Shows the mirror image.
1	Switches to Record mode. ▶ p. 75
2	Changes the image size.

Key	Function
<b>3</b>	Changes the image quality.
<b>4</b>	Changes the shooting mode.
<b>5</b>	Changes the colour tone or applies a special effect.
<b>6</b>	Changes the white balance.
<b>7</b>	Selects a decorative frame.
<b>8</b>	Sets the timer.
<b>9</b>	Changes the ISO settings.
<b>*</b>	Sets whether or not to use Night shot mode.
<b>0</b>	Goes to the <b>My photos</b> folder.
<b>#</b>	Changes the preview screen.

### Using photo options

After saving a photo, press <**Options**> to access the following options:



- **View:** access one of the multi-shot photos.
- **Viewfinder:** return to Capture mode.

- **Send via:** send the file via MMS, e-mail, or Bluetooth.
- **Set as:** set the photo as wallpaper for the main display or as a caller ID image for a Phonebook entry.
- **Edit:** edit the photo using the Image editor. ► p. 36
- **Delete:** delete the file.
- **Rename:** change the file name.
- **Go to My photos:** access the **My photos** folder. ► p. 63
- **Lock/Unlock:** lock the file to protect it from being deleted, or unlock the file.
- **Print via Bluetooth:** print the image by connecting the phone to a printer via Bluetooth. Some printers may not be compatible with the phone.
- **Details:** access the file properties.

### Recording a video


You can record a video of what is displayed on the camera screen and save it.

### Recording a video

1. In Capture mode, press [**1**].
2. Make any desired adjustments.
  - Press <> to access camera options. ► next section
  - Use the keypad to change the camera settings or switch to other modes. ► p. 77
3. Press [**z**] to start recording.
4. Press [**z**] or <> to stop recording.  
The video is automatically saved in the **My video clips** folder.

To	Press
play back the video [ <b>z</b> ]. clip	
access video options	< <b>Options</b> >. ► p. 77
delete the video clip	[ <b>C</b> ] and then < <b>Yes</b> >.
return to Record mode	< <b>Preview</b> >.

## Using camera options in Record mode

In Record mode, press <> to access the following options:

- **Take photo**: switch to Capture mode.
- **Effects**: change the colour tone or apply a special effect.
- **Timer**: set a time delay before the camera starts recording.
- **Go to My video clips**: access the **My video clips** folder.
- **Camcorder settings**: change the following settings for recording a video:

**Recording mode**: select a video recording mode.

Select **Normal** to record a video within the limit of the currently available memory. The video clip is saved in MP4 format.

Select **Limit for multimedia messages/wallpaper** to record a video suitable for messaging or for setting as wallpaper or caller ID image. The video clip is saved in 3gp format.

**Size**: select a frame size.

**Quality**: select an image quality setting.

**Viewfinder:** select a preview screen.

**Audio record:** record a video with audio.

**Zoom sound:** turn the sound effect for zooming on or off.

**Brightness sound:** turn the sound effect for brightness adjustment on or off.

**White balance:** adjust the colour balance of the image. You can make your video appear warmer or cooler.

- **Camcorder shortcuts:** view the functions of the keys you can use in Record mode.

### Using the keypad in Record mode

You can use the keypad to customise your camera settings in Record mode.

Key	Function
Left/Right	Adjusts the brightness.
Up/Down	Zooms in or out.
▲	Flips the image vertically.

Key	Function
▼	Shows the mirror image.
1	Switches to Capture mode. ► p. 73
2	Changes the frame size.
3	Changes the image quality.
4	Changes the video recording mode.
5	Changes the colour tone or applies a special effect.
6	Changes the white balance.
7	Mutes or unmutes audio.
8	Sets the timer.
0	Goes to the <b>My video clips</b> folder.
#	Changes the preview screen.

### Using video options

After saving a video clip, press **<Options>** to access the following options:

- **Viewfinder:** return to Record mode.
- **Send via:** send the file via MMS, e-mail, or Bluetooth.
- **Set as:** set the video clip, if saved as a 3gp file, as wallpaper for the main display or a caller ID image for a Phonebook entry.
- **Delete:** delete the file.
- **Rename:** change the file name.
- **Go to My video clips:** access the **My video clips** folder. ► p. 64
- **Lock/Unlock:** lock the file to protect it from being deleted, or unlock the file.
- **Details:** access the file properties.

## Settings (Menu 9)

The **Settings** menu provides you with various setting options to customise the phone to your preferences and needs. You can also reset the settings to their default status.

To access this menu, press <**Menu**> in Idle mode and select **Settings**.

## Time and date (Menu 9.1)

Use this menu to change the time and date displayed on your phone. Before setting the time and date, specify your time zone in the **World clock** menu. ► p. 39

- **Time:** enter the current time.
- **AM/PM:** select **AM** or **PM** in 12-hour time format.
- **Time format:** select a time format.
- **Date:** enter the current date.
- **Date format:** select a date format.
- **Calendar starting day:** set which day of the week the calendar starts with.
- **Auto update:** activates the auto time update feature. Your phone will read the MCC (Mobile Country Code) from the network and automatically update the current time for the country that you are in when you travel abroad.

☒ Time information may not be updated when you move to one time zone to another within a country.

## Phone settings (Menu 9.2)



Many different features of your phone's system can be customised to suit your preferences.

- ☒ Some menus may not be available, depending on your service provider.

### Language (Menu 9.2.1)

Use this menu to select a language for the display text. If you select **Automatic**, the phone uses the same language as the SIM card.

### Greeting message (Menu 9.2.2)

Use this menu to enter the greeting that is displayed briefly when the phone is switched on.

### Shortcuts (Menu 9.2.3)

You can use the Navigation keys as shortcuts to access specific menus directly from Idle mode. Use this menu to assign a shortcut to a key. [Up] is fixed as a shortcut to My Menu mode.

### Assigning a shortcut menu

1. Select a key to be used as a shortcut key.
2. Select a menu to be assigned to the key.

### Using shortcut options

Press <Options> to access the following options:

- **Change:** assign or change a shortcut menu.
- **Remove:** deactivate the shortcut assignment to the selected key.
- **Remove all:** deactivate all shortcut assignments.

### My menu (Menu 9.2.4)

You can set up a menu of your own using your favourite menu items, which can be easily accessed by pressing [Up] in Idle mode.

### Setting up My menu item

1. Select an item to be changed.
2. Select the menu item you want.

## Using item options

Press <**Options**> to access the following options:

- **Assign:** assign an item.
- **Change:** change the selected item.
- **Remove:** remove the selected item.
- **Remove all:** remove all items.

## Volume key (Menu 9.2.5)

Use this menu to set whether the phone mutes the call ringer or rejects a call if you press and hold [▲/▼] when a call comes in.

## Extra settings (Menu 9.2.6)

You can turn the automatic redialling or answering feature on or off.

- **Auto redial:** set the phone to make up to ten attempts to redial a phone number after an unsuccessful call.
- **Active flip:** answer an incoming call by opening the phone.
- **Anykey answer:** answer an incoming call by pressing any key, except for <**Reject**> and [Ⓢ].

## Offline mode (Menu 9.2.7)

Use this menu to switch the phone to Offline mode or back to Online mode.

## Display settings (Menu 9.3)

Use this menu to change settings for the display and backlight.

### Wallpaper (Menu 9.3.1)

You can set up the idle screen on the main display.

- **Main display:** select an image or a video clip to be displayed on the main display.
- **Calendar wallpaper:** set the phone to display the calendar.
- **Text position:** select a text position. If you do not want to display text in Idle mode, select **Off**.
- **Text mode:** select a font style.
- **Text colour:** select a font colour.
- **Graphic logo:** set the phone to display a graphic icon instead of the service

provider's logo on the idle screen. This is only available if a graphic icon has been received in a message.

### **Main menu style** (Menu 9.3.2)

You can select a display style for the main menu screen.

### **Skin** (Menu 9.3.3)

You can select a skin colour pattern for Menu mode.

### **Brightness** (Menu 9.3.4)

You can adjust the brightness of the display for varying lighting conditions.

### **Dialing display** (Menu 9.3.5)

Use this menu to select a font type, and colour and size for the numbers, and background colour of the display while dialling.

### **Show caller information** (Menu 9.3.6)

Use this menu to set the phone to display missed call notifications with the most recently missed caller's information.

## **Sound settings** (Menu 9.4)

---

Use this menu to customise various sound settings.

### **Incoming call** (Menu 9.4.1)

Use this menu to change the sound settings for incoming calls.

- **Ringtone:** select a ringtone to be used for the call ringer.
- **Volume:** select a ringtone volume.
- **Alert type:** specify how you are to be informed of incoming calls.

### **Keypad tone** (Menu 9.4.2)

Use this menu to select the tone that the phone sounds when you press a key.

☒ You can adjust the key tone volume using [▲/▼] in Idle mode.

### **Message tone** (Menu 9.4.3)

Use this menu to change the sound settings for incoming SMS messages, MMS messages, e-mails, and broadcast messages individually.

- **Tone:** select one of several message tones.

- **Alert type:** specify how you are to be informed when a message comes in.
- **Repetition:** specify how often the phone informs you of a new message.

### **Power on/off** (Menu 9.4.4)

Use this menu to select the melody that the phone sounds when it is switched on or off.

### **Flip tone** (Menu 9.4.5)

Use this menu to select the tone that the phone sounds when you open or close the phone.

### **Silent mode** (Menu 9.4.6)

Use this menu to set how the phone acts to alert you to a specific event while in Silent mode.

### **Extra tones** (Menu 9.4.7)

Use this menu to customise additional tones for the phone.

- **Minute minder:** set the phone to beep every minute during an outgoing call to keep you informed of the length of your call.

- **Connection tone:** set the phone to beep when an outgoing call connects to the system.
- **Alert on call:** set the phone to beep when you receive a new message or when the time for an alarm comes during a call.
- **Indicative tone:** set the phone to beep when a pop-up window displays.

### **Light settings** (Menu 9.5)

---

Use this menu to change the settings for the light.

#### **Backlight time** (Menu 9.5.1)

You can select the length of time the backlight or display stays on.

- **Normal:** select the length of time the backlight stays on.
- **Dimmed:** select the length of time the display stays on in Dim mode after the backlight turns off. After a specified time, the display turns off.
- **Show cover indicators:** use this menu to set whether or not the icons are

shown on the external display after the display turns off.

### Keypad light (Menu 9.5.2)

Use this menu to set how the phone controls the use of the keypad light. Select one of the following options in the **Use at** line:

- **Any time:** the keypad light is always used.
- **Night time:** the keypad light is used only between 5:00 PM and 9:00 AM.
- **Custom time:** you can specify the time period that the keypad light is used.

### Network services (Menu 9.6)

---

Use this menu to access network services. Please contact your service provider to check their availability and subscribe to them, if you wish.

#### Call diverting (Menu 9.6.1)

This network service reroutes incoming calls to a phone number that you specify.

1. Select a call diverting option:
  - **Divert always:** divert all calls.
  - **Busy:** divert calls when you are on another call.

- **No reply:** divert calls when you do not answer the phone.
- **Unreachable:** divert calls when you are not in your service area or when your phone is switched off.
- **Cancel all:** cancel all call diverting options.

2. Select the type of calls to be diverted.
3. Select **Activate**. To deactivate call diverting, select **Deactivate**.
4. Move to the **Divert to** line.
5. Enter the number to which calls are to be diverted.
6. If you selected **No reply**, move to the **Seconds** line and select the length of time the network delays before diverting a call.
7. Press <**Select**>.

#### Call barring (Menu 9.6.2)

This network service allows you to restrict your calls.

1. Select a call barring option:
  - **All outgoing calls:** prohibit all outgoing calls.

- **International:** prohibit international calls.
  - **International except home:** only allow calls to numbers within the current country when you are abroad, and to your home service area.
  - **All incoming calls:** prohibit incoming calls.
  - **Incoming while abroad:** prohibit incoming calls when you use your phone outside of your home service area.
  - **Cancel all:** cancel all call barring settings, allowing calls to be sent and received normally.
  - **Change barring password:** change the call barring password obtained from your service provider.
2. Select the type of calls to be barred.
  3. Select **Activate**. To deactivate call barring, select **Deactivate**.
  4. Enter the call barring password supplied by your service provider and press **<Select>**.

### Call waiting (Menu 9.6.3)

This network service informs you when someone is trying to reach you while you are on another call.

1. Select the type of calls to which call waiting option will apply.
2. Select **Activate**. To deactivate call waiting, select **Deactivate**.

### Network selection (Menu 9.6.4)

This network service allows you to manually select the network to be used while roaming outside of your home area, or to let the network be chosen automatically.

You can select a network other than your home network only if there is a valid roaming agreement between the two.

### Caller ID (Menu 9.6.5)

This network service allows you to hide your phone number from the person you are calling. If you select **Default**, the phone will use the default setting provided by the network.



Some networks may not allow you to change this setting.

### **Voice mail server** (Menu 9.6.6)

Use this menu to store the number of the voicemail server and access your voicemails.

- ☒ You must store the voicemail server number before accessing the server. Your service provider can give you the number.

- **Connect to voice server:** connect to the voicemail server to listen to your messages.
- **Voice server number:** enter the voicemail server number.

### **Closed user group** (Menu 9.6.7)

Use this menu to set incoming and outgoing calls to be restricted to a selected user group. For details about how to create a closed user group (CUG), contact your service provider.

- **Index list:** add, delete, or activate CUG index numbers.
- **Outside access:** enable calls to numbers other than those in the closed user group. This feature depends on the nature of your CUG subscription.

- **Default group:** enable the default CUG, if you have set one with your service provider. When making a call, you are given the option of using your default CUG, instead of selecting one from the list.

## Security (Menu 9.7)

Use this menu to protect the phone against unauthorised use by managing the several access codes of your phone and SIM card.

- ☒ If you enter an incorrect PIN/PIN2 three times, the SIM card is blocked. To unblock it, you need to enter your PUK/PUK2 (Personal Unblocking Key). The codes are supplied by your service provider.

### PIN check (Menu 9.8.1)

The 4- to 8-digit PIN (Personal Identification Number) protects your SIM card against unauthorised use. When this feature is enabled, the phone requires your PIN each time it is switched on.

### Change PIN code (Menu 9.8.2)

Use this menu to change your PIN. The PIN check feature must be enabled to change the PIN.

### Phone lock (Menu 9.8.3)

Use this menu to lock the phone from unauthorised use.

When this feature is enabled, you must enter a 4- to 8-digit phone password each time the phone is switched on.

The password is preset to **00000000**. To change the password, use the **Change password** menu.

### Change password (Menu 9.8.4)

Use this menu to change your phone password.

### Privacy (Menu 9.8.5)

Use this menu to lock access to messages, media files, all menu functions on the phone, except for call functions.

When a privacy option is enabled, you must enter the phone password to access the locked items or functions.

### SIM lock (Menu 9.8.6)

This menu allows your phone to work only with the current SIM by assigning a SIM lock code. You must enter the SIM lock code to use a different SIM card.

### Fixed dialling mode (Menu 9.8.7)

If supported by your SIM card, Fixed Dialling Number (FDN) mode restricts your outgoing calls to a limited set of phone numbers. When this feature is enabled, you can make



calls only to phone numbers stored on the SIM card.

### Change PIN2 code (Menu 9.8.8)

If supported by your SIM card, use this menu to change your current PIN2.

### Mobile tracker (Menu 9.8.9)

When someone tries to use your phone with another SIM card, the phone will automatically send the preset tracking message to your family or friends. You can check the phone number from which the messages are sent and then track your phone. This feature is useful when the phone is stolen or lost.

- ☒ Sending of the tracking message will be billed to the user of the unauthorised SIM card. To use your phone with any other SIM card, you must first deactivate the Mobile tracker feature.

1. Enter the phone password and press **<OK>**.
2. Specify the following options:

- **Mobile tracker:** activate the Mobile tracker feature.
- **Recipients:** specify phone numbers to which you want to send the tracking messages.
- **Sender:** enter the sender's name.
- **Message:** check the preset tracking message text.

3. When you have finished, press **<Save>**.

### Connection settings (Menu 9.9)

---

Use this menu to create and customise the profiles containing the settings for connecting your phone to the network. You need these settings to use the web browser or send MMS messages or e-mails.

- ☒ Your phone is set by default for connecting to the network by default. If you change the settings without first checking with your service provider, the web browser, MMS, and e-mail features may not work properly.

## Creating a profile

1. Press <**New**>. If a profile has already been saved, press <**Options**> and select **Add new connection**.
2. Specify profile parameters:
  - **Profile name**: enter a profile name.
  - **Homepage URL**: enter the URL address of the page to be used as your homepage.
  - **Proxy**: activate or deactivate the proxy server.
  - **IP address**: enter the IP address of the proxy server.
  - **Port**: enter the port number of the proxy server.
  - **Linger time**: set a time period after which the network is disconnected if there has been no new data traffic in that time.
  - **DNS**: activate or deactivate the DNS (Domain Name Server) addresses.
  - **DNS 1** and **DNS 2**: enter the primary and secondary DNS addresses.
  - **Bearer**: select the network bearer type.

- **Advanced settings**: change the advanced options. Depending on the bearer setting, available options vary.  
*When the bearer is set to **GPRS**:*  
**APN**: enter the access point name.  
**Login ID**: enter the login ID.  
**Password**: enter the login password.  
*When the bearer is set to **GSM**:*  
**Dial number**: enter the PPP phone number.  
**Login ID**: enter the login ID.  
**Password**: enter the login password.  
**Data call type**: select a call type for data transmission.

3. Press <**Save**> to save the profile.

## Using profile options

Press <**Options**> to access the following options:

- **Edit**: edit the selected profile.
- **Delete**: delete the profile.

- **Add new connection:** add a new profile.

## **Reset settings** (Menu 9.10)

Use this menu to reset the phone's settings you have changed.

1. Press [**z**] to select the setting categories to be reset.
2. Press <**Reset**>.
3. Press <**OK**> to confirm the reset.
4. Enter the phone password and press <**OK**>.

☒ The password is preset to **00000000**.  
You can change this password. ▶ p. 86

## *Solve problems*

### *Help and personal needs*

To save the time and expense of an unnecessary service call, perform the simple checks in this section before contacting a service professional.

### **When you switch on your phone, the following messages may appear:**

"Insert SIM card"

- Be sure that the SIM card is correctly installed.

"Enter password"

- The automatic locking function has been enabled. You must enter the phone's password before you can use the phone.

"Enter PIN"

- You are using your phone for the first time. You must enter the PIN supplied with the SIM card.
- The PIN check feature is enabled. Every time the phone is switched on, the PIN

has to be entered. To disable this feature, use the **PIN check** menu.

“Enter PUK”

- The PIN has been entered incorrectly three times, and the SIM card is now blocked. Enter the PUK supplied by your service provider.

**“No service,” “Network failure,” or “Not done” displays**

- The network connection has been lost. You may be in a weak signal area. Move and try again.
- You are trying to access an option for which you have no subscription with your service provider. Contact the service provider for further details.

**You have entered a number but it was not dialled**

- Be sure that you have pressed [↵].
- Be sure that you have accessed the right cellular network.
- Be sure that you have not set an outgoing call barring option.

**Your correspondent cannot reach you**

- Be sure that your phone is switched on. ([📶] pressed for more than one second.)
- Be sure that you are accessing the correct cellular network.
- Be sure that you have not set an incoming call barring option.




**Your correspondent cannot hear you speaking**

- Be sure that you have switched on the microphone.
- Be sure that you are holding the phone close enough to your mouth. The microphone is located at the bottom of the phone.

**The phone starts beeping and “Warning. Low battery” flashes on the display**

- Your battery is insufficiently charged. Recharge the battery.

**The audio quality of the call is poor**

- Check the signal strength indicator on the display (  ). The number of bars indicates the signal strength from strong (  ) to weak (  ).
- Try moving the phone slightly or moving closer to a window if you are in a building.

### **No number is dialled when you re-call a Phonebook entry**

- Use the **Contact list** menu to ensure the number has been stored correctly.
- Re-store the number, if necessary.

### **The battery does not charge properly or the phone sometimes turns itself off**

- Wipe the charging contacts both on the phone and on the battery with a clean soft cloth.

### **If the above guidelines do not help you to solve the problem, take note of:**

- The model and serial numbers of your phone
- Your warranty details
- A clear description of the problem

Then contact your local dealer or Samsung after-sales service.

## *Health and safety information*

### **Exposure to Radio Frequency (RF) Signals**

---

#### **Certification Information (SAR)**

Your wireless phone is a radio transmitter and receiver. It is designed and manufactured not to exceed the exposure limits for radio frequency (RF) energy set by the Federal Communications Commission (FCC) of the U.S. government. These FCC exposure limits are derived from the recommendations of two expert organizations, the National Council on Radiation Protection and Measurement (NCRP) and the Institute of Electrical and Electronics Engineers (IEEE). In both cases, the recommendations were developed by scientific and engineering experts drawn from industry, government, and academia after extensive reviews of the scientific literature related to the biological effects of RF energy. The exposure limit set by the FCC for wireless mobile phones employs a unit of

measurement known as the Specific Absorption Rate (SAR). The SAR is a measure of the rate of absorption of RF energy by the human body expressed in units of watts per kilogram (W/kg). The FCC requires wireless phones to comply with a safety limit of 1.6 watts per kilogram (1.6 W/kg). The FCC exposure limit incorporates a substantial margin of safety to give additional protection to the public and to account for any variations in measurements. SAR tests are conducted using standard operating positions accepted by the FCC with the phone transmitting at its highest certified power level in all tested frequency bands. Although the SAR is determined at the highest certified power level, the actual SAR level of the phone while operating can be well below the maximum value. This is because the phone is designed to operate at multiple power levels so as to use only the power required to reach the network. In general, the closer you are to a wireless base station antenna, the lower the power output.

Before a new model phone is available for sale to the public, it must be tested and certified to the FCC that it does not exceed the exposure limit established by the FCC. Tests for each model phone are performed in positions and locations (e.g. at the ear and worn on the body) as required by the FCC. Body-worn operations are restricted to Samsung-supplied, approved, or non-Samsung designated accessories that have no metal and must provide at least 1.5 cm separation between the device, including its antenna (whether extended or retracted) and the user's body. Non-compliance with the above restrictions may result in violation of FCC RF exposure guidelines. The FCC has granted an Equipment Authorization for this mobile phone with all reported SAR levels evaluated as in compliance with the FCC RF exposure guidelines. The maximum SAR values for this model phone as reported to the FCC are:

#### **GSM 1900**

- Head: 1.36 W/Kg.
- Body-worn: 0.243 W/Kg.

SAR information on this and other model phones can be viewed on-line at [www.fcc.gov/oet/fccid](http://www.fcc.gov/oet/fccid). This site uses the phone FCC ID number, A3LSGHS501i. Sometimes it may be necessary to remove the battery pack to find the number. Once you have the FCC ID number for a particular phone, follow the instructions on the website and it should provide values for typical or maximum SAR for a particular phone. Additional product specific SAR information can also be obtained at [www.fcc.gov/cgb/sar](http://www.fcc.gov/cgb/sar).

### **Consumer Information on Wireless Phones**

---

The U.S. Food and Drug Administration (FDA) has published a series of Questions and Answers for consumers relating to radio frequency (RF) exposure from wireless phones. The FDA publication includes the following information:

#### **What kinds of phones are the subject of this update?**

The term wireless phone refers here to hand-held wireless phones with built-in

antennas, often called “cell”, “mobile”, or “PCS” phones. These types of wireless phones can expose the user to measurable radio frequency energy (RF) because of the short distance between the phone and the user's head. These RF exposures are limited by Federal Communications Commission safety guidelines that were developed with the advice of FDA and other federal health and safety agencies. When the phone is located at greater distances from the user, the exposure to RF is drastically lower because a person's RF exposure decreases rapidly with increasing distance from the source. The so-called “cordless phones”, which have a base unit connected to the telephone wiring in a house, typically operate at far lower power levels, and thus produce RF exposures well within the FCC's compliance limits.

### **Do wireless phones pose a health hazard?**

The available scientific evidence does not show that any health problems are associated with using wireless phones. There is no proof, however, that wireless phones are absolutely safe. Wireless phones emit

low levels of radio frequency energy (RF) in the microwave range while being used. They also emit very low levels of RF when in the stand-by mode. Whereas high levels of RF can produce health effects (by heating tissue), exposure to low level RF that does not produce heating effects causes no known adverse health effects. Many studies of low level RF exposures have not found any biological effects. Some studies have suggested that some biological effects may occur, but such findings have not been confirmed by additional research. In some cases, other researchers have had difficulty in reproducing those studies, or in determining the reasons for inconsistent results.

### **What is FDA's role concerning the safety of wireless phones?**

Under the law, FDA does not review the safety of radiation-emitting consumer products such as wireless phones before they can be sold, as it does with new drugs or medical devices. However, the agency has authority to take action if wireless phones are shown to emit radio frequency energy (RF) at a level that is hazardous to the user.



In such a case, FDA could require the manufacturers of wireless phones to notify users of the health hazard and to repair, replace or recall the phones so that the hazard no longer exists. Although the existing scientific data do not justify FDA regulatory actions, FDA has urged the wireless phone industry to take a number of steps, including the following:

- "Support needed research into possible biological effects of RF of the type emitted by wireless phones;
- "Design wireless phones in a way that minimizes any RF exposure to the user that is not necessary for device function; and.
- "Cooperate in providing users of wireless phones with the best possible information on possible effects of wireless phone use on human health.

FDA belongs to an interagency working group of the federal agencies that have responsibility for different aspects of RF safety to ensure coordinated efforts at the federal level. The following agencies belong to this working group:

- "National Institute for Occupational Safety and Health.
- "Environmental Protection Agency.
- "Federal Communications Commission.
- "Occupational Safety and Health Administration.
- "National Telecommunications and Information Administration

The National Institutes of Health participates in some interagency working group activities, as well. FDA shares regulatory responsibilities for wireless phones with the Federal Communications Commission (FCC). All phones that are sold in the United States must comply with FCC safety guidelines that limit RF exposure. FCC relies on FDA and other health agencies for safety questions about wireless phones. FCC also regulates the base stations that the wireless phone networks rely upon. While these base stations operate at higher power than do the wireless phones themselves, the RF exposures that people get from these base stations are typically thousands of times lower than those they can get from wireless phones. Base stations are thus not the

primary subject of the safety questions discussed in this document.

### **What are the results of the research done already?**

The research done thus far has produced conflicting results, and many studies have suffered from flaws in their research methods. Animal experiments investigating the effects of radio frequency energy (RF) exposures characteristic of wireless phones have yielded conflicting results that often cannot be repeated in other laboratories. A few animal studies, however, have suggested that low levels of RF could accelerate the development of cancer in laboratory animals. However, many of the studies that showed increased tumor development used animals that had been genetically engineered or treated with cancer-causing chemicals so as to be pre-disposed to develop cancer in absence of RF exposure. Other studies exposed the animals to RF for up to 22 hours per day. These conditions are not similar to the conditions under which people use wireless phones, so we don't know with certainty

what the results of such studies mean for human health.

Three large epidemiology studies have been published since December 2000. Between them, the studies investigated any possible association between the use of wireless phones and primary brain cancer, glioma, meningioma, or acoustic neuroma, tumors of the brain or salivary gland, leukemia, or other cancers. None of the studies demonstrated the existence of any harmful health effects from wireless phones RF exposures. However, none of the studies can answer questions about long-term exposures, since the average period of phone use in these studies was around three years.

### **What research is needed to decide whether RF exposure from wireless phones poses a health risk?**

A combination of laboratory studies and epidemiological studies of people actually using wireless phones would provide some of the data that are needed. Lifetime animal exposure studies could be completed in a few years. However, very large numbers of

animals would be needed to provide reliable proof of a cancer promoting effect if one exists. Epidemiological studies can provide data that is directly applicable to human populations, but ten or more years' follow-up may be needed to provide answers about some health effects, such as cancer. This is because the interval between the time of exposure to a cancer-causing agent and the time tumors develop - if they do - may be many, many years. The interpretation of epidemiological studies is hampered by difficulties in measuring actual RF exposure during day-to-day use of wireless phones. Many factors affect this measurement, such as the angle at which the phone is held, or which model of phone is used.

**What is FDA doing to find out more about the possible health effects of wireless phone RF?**

FDA is working with the U.S. National Toxicology Program and with groups of investigators around the world to ensure that high priority animal studies are conducted to address important questions about the effects of exposure to radio

frequency energy (RF).FDA has been a leading participant in the World Health Organization international Electromagnetic Fields (EMF) Project since its inception in 1996. An influential result of this work has been the development of a detailed agenda of research needs that has driven the establishment of new research programs around the world. The Project has also helped develop a series of public information documents on EMF issues.FDA and Cellular Telecommunications & Internet Association (CTIA) have a formal Cooperative Research and Development Agreement (CRADA) to do research on wireless phone safety. FDA provides the scientific oversight, obtaining input from experts in government, industry, and academic organizations. CTIA-funded research is conducted through contracts to independent investigators. The initial research will include both laboratory studies and studies of wireless phone users. The CRADA will also include a broad assessment of additional research needs in the context of the latest research developments around the world.

## **What steps can I take to reduce my exposure to radio frequency energy from my wireless phone?**

If there is a risk from these products - and at this point we do not know that there is - it is probably very small. But if you are concerned about avoiding even potential risks, you can take a few simple steps to minimize your exposure to radio frequency energy (RF). Since time is a key factor in how much exposure a person receives, reducing the amount of time spent using a wireless phone will reduce RF exposure.

- "If you must conduct extended conversations by wireless phone every day, you could place more distance between your body and the source of the RF, since the exposure level drops off dramatically with distance. For example, you could use a headset and carry the wireless phone away from your body or use a wireless phone connected to a remote antenna.

Again, the scientific data do not demonstrate that wireless phones are harmful. But if you are concerned about the RF exposure from

these products, you can use measures like those described above to reduce your RF exposure from wireless phone use.

## **What about children using wireless phones?**

The scientific evidence does not show a danger to users of wireless phones, including children and teenagers. If you want to take steps to lower exposure to radio frequency energy (RF), the measures described above would apply to children and teenagers using wireless phones. Reducing the time of wireless phone use and increasing the distance between the user and the RF source will reduce RF exposure.

Some groups sponsored by other national governments have advised that children be discouraged from using wireless phones at all. For example, the government in the United Kingdom distributed leaflets containing such a recommendation in December 2000. They noted that no evidence exists that using a wireless phone causes brain tumors or other ill effects. Their recommendation to limit wireless phone use

by children was strictly precautionary; it was not based on scientific evidence that any health hazard exists.

**Do hands-free kits for wireless phones reduce risks from exposure to RF emissions?**

Since there are no known risks from exposure to RF emissions from wireless phones, there is no reason to believe that hands-free kits reduce risks. Hands-free kits can be used with wireless phones for convenience and comfort. These systems reduce the absorption of RF energy in the head because the phone, which is the source of the RF emissions, will not be placed against the head. On the other hand, if the phone is mounted against the waist or other part of the body during use, then that part of the body will absorb more RF energy. Wireless phones marketed in the U.S. are required to meet safety requirements regardless of whether they are used against the head or against the body. Either configuration should result in compliance with the safety limit.

**Do wireless phone accessories that claim to shield the head from RF radiation work?**

Since there are no known risks from exposure to RF emissions from wireless phones, there is no reason to believe that accessories that claim to shield the head from those emissions reduce risks. Some products that claim to shield the user from RF absorption use special phone cases, while others involve nothing more than a metallic accessory attached to the phone. Studies have shown that these products generally do not work as advertised. Unlike hands-free kits, these so-called shields may interfere with proper operation of the phone. The phone may be forced to boost its power to compensate, leading to an increase in RF absorption. In February 2002, the Federal Trade Commission (FTC) charged two companies that sold devices that claimed to protect wireless phone users from radiation with making false and unsubstantiated claims. According to FTC, these defendants lacked a reasonable basis to substantiate their claim.

## What about wireless phone interference with medical equipment?

Radio frequency energy (RF) from wireless phones can interact with some electronic devices. For this reason, FDA helped develop a detailed test method to measure electromagnetic interference (EMI) of implanted cardiac pacemakers and defibrillators from wireless telephones. This test method is now part of a standard sponsored by the Association for the Advancement of Medical Instrumentation (AAMI). The final draft, a joint effort by FDA, medical device manufacturers, and many other groups, was completed in late 2000. This standard will allow manufacturers to ensure that cardiac pacemakers and defibrillators are safe from wireless phone EMI. FDA has tested wireless phones and helped develop a voluntary standard sponsored by the Institute of Electrical and Electronic Engineers (IEEE). This standard specifies test methods and performance requirements for hearing aids and wireless phones so that no interference occurs when a person uses a compatible phone and a

compatible hearing aid at the same time. This standard was approved by the IEEE in 2000.

FDA continues to monitor the use of wireless phones for possible interactions with other medical devices. Should harmful interference be found to occur, FDA will conduct testing to assess the interference and work to resolve the problem. Additional information on the safety of RF exposures from various sources can be obtained from the following organizations:

- FCC RF Safety Program:  
<http://www.fcc.gov/oet/rfsafety/>
- Environmental Protection Agency (EPA):  
<http://www.epa.gov/radiation/Occupational>
- Safety and Health Administration's (OSHA):  
<http://www.osha.gov/SLTC/radiofrequencyradiation/index.html>
- National Institute for Occupational Safety and Health (NIOSH):  
<http://www.cdc.gov/niosh/emfpg.html>

- World health Organization (WHO):  
<http://www.who.int/peh-emf/>
- International Commission on Non-Ionizing Radiation Protection:  
<http://www.icnirp.de>.
- National Radiation Protection Board (UK):  
<http://www.nrpb.org.uk>. Updated 4/3/2002: US food and Drug Administration <http://www.fda.gov/cellphones>

## **Road Safety**

---

Your wireless phone gives you the powerful ability to communicate by voice, almost anywhere, anytime. But an important responsibility accompanies the benefits of wireless phones, one that every user must uphold.

When driving a car, driving is your first responsibility. When using your wireless phone behind the wheel of a car, practice good common sense and remember the following tips:

1. Get to know your wireless phone and its features, such as speed dial and redial. If available, these features help you to place your call without taking your attention off the road.
2. When available, use a hands-free device. If possible, add an additional layer of convenience and safety to your wireless phone with one of the many hands free accessories available today.
3. Position your wireless phone within easy reach. Be able to access your wireless phone without removing your eyes from the road. If you get an incoming call at an inconvenient time, let your voice mail answer it for you.
4. Let the person you are speaking with know you are driving; if necessary, suspend the call in heavy traffic or hazardous weather conditions. Rain, sleet, snow, ice and even heavy traffic can be hazardous.
5. Do not take notes or look up phone numbers while driving. Jotting down a to do list or flipping through your address book takes attention away from

your primary responsibility, driving safely.

6. Dial sensibly and assess the traffic; if possible, place calls when you are not moving or before pulling into traffic. Try to plan calls when your car will be stationary. If you need to make a call while moving, dial only a few numbers, check the road and your mirrors, then continue.
7. Do not engage in stressful or emotional conversations that may be distracting. Make people you are talking with aware you are driving and suspend conversations that have the potential to divert your attention from the road.
8. Use your wireless phone to call for help. Dial 9-1-1 or other local emergency number in the case of fire, traffic accident or medical emergencies. Remember, it is a free call on your wireless phone!
9. Use your wireless phone to help others in emergencies. If you see an auto accident, crime in progress or other serious emergency where lives are in

danger, call 9-1-1 or other local emergency number, as you would want others to do for you.

10. Call roadside assistance or a special non-emergency wireless assistance number when necessary. If you see a broken-down vehicle posing no serious hazard, a broken traffic signal, a minor traffic accident where no one appears injured, or a vehicle you know to be stolen, call roadside assistance or other special non-emergency number.

**"The wireless industry reminds you to use your phone safely when driving."**

For more information, please call 1-888-901-SAFE, or visit our web-site [www.wow-com.com](http://www.wow-com.com)

Provided by the Cellular Telecommunications & Internet Association

**Operating Environment**

Remember to follow any special regulations in force in any area and always switch your phone off whenever it is forbidden to use it, or when it may cause interference or danger. When connecting the phone or any



accessory to another device, read its user's guide for detailed safety instructions. Do not connect incompatible products. As with other mobile radio transmitting equipment, users are advised that for the satisfactory operation of the equipment and for the safety of personnel, it is recommended that the equipment should only be used in the normal operating position (held to your ear with the antenna pointing over your shoulder).

### **Using Your Phone Near Other Electronic Devices**

Most modern electronic equipment is shielded from radio frequency (RF) signals. However, certain electronic equipment may not be shielded against the RF signals from your wireless phone. Consult the manufacturer to discuss alternatives.

### **Pacemakers**

Pacemaker manufacturers recommend that a minimum distance of 15 cm (6 inches) be maintained between a wireless phone and a pacemaker to avoid potential interference with the pacemaker.

These recommendations are consistent with the independent research and recommendations of Wireless Technology Research.

### **Persons with pacemakers:**

- should always keep the phone more than 15 cm (6 inches) from their pacemaker when the phone is switched on.
- should not carry the phone in a breast pocket.
- should use the ear opposite the pacemaker to minimize potential interference.

If you have any reason to suspect that interference is taking place, switch your phone off immediately.

### **Hearing Aids**

Some digital wireless phones may interfere with some hearing aids. In the event of such interference, you may wish to consult your hearing aid manufacturer to discuss alternatives.

## Other Medical Devices

If you use any other personal medical devices, consult the manufacturer of your device to determine if it is adequately shielded from external RF energy. Your physician may be able to assist you in obtaining this information. Switch your phone off in health care facilities when any regulations posted in these areas instruct you to do so. Hospitals or health care facilities may be using equipment that could be sensitive to external RF energy.

## Vehicles

RF signals may affect improperly installed or inadequately shielded electronic systems in motor vehicles. Check with the manufacturer or its representative regarding your vehicle. You should also consult the manufacturer of any equipment that has been added to your vehicle.

## Posted Facilities

Switch your phone off in any facility where posted notices require you to do so.

## Potentially Explosive Environments

Switch your phone off when in any area with a potentially explosive atmosphere and obey all signs and instructions. Sparks in such areas could cause an explosion or fire resulting in bodily injury or even death.

Users are advised to switch the phone off while at a refueling point (service station). Users are reminded of the need to observe restrictions on the use of radio equipment in fuel depots (fuel storage and distribution areas), chemical plants or where blasting operations are in progress. Areas with a potentially explosive atmosphere are often but not always clearly marked. They include below deck on boats, chemical transfer or storage facilities, vehicles using liquefied petroleum gas (such as propane or butane), areas where the air contains chemicals or particles, such as grain, dust or metal powders, and any other area where you would normally be advised to turn off your vehicle engine.

## **Emergency Calls**

---

This phone, like any wireless phone, operates using radio signals, wireless and landline networks as well as user programmed functions, which cannot guarantee connection in all conditions. Therefore, you should never rely solely on any wireless phone for essential communications (medical emergencies, for example).

Remember, to make or receive any calls the phone must be switched on and in a service area with adequate signal strength.

Emergency calls may not be possible on all wireless phone networks or when certain network services and/or phone features are in use. Check with local service providers.

To make an emergency call:

1. If the phone is not on, switch it on.
2. Key in the emergency number for your present location (for example, 911 or other official emergency number).  
Emergency numbers vary by location.
3. Press .

If certain features are in use (call barring, for example), you may first need to deactivate those features before you can make an emergency call. Consult this document and your local cellular service provider. When making an emergency call, remember to give all the necessary information as accurately as possible. Remember that your phone may be the only means of communication at the scene of an accident; do not cut off the call until given permission to do so.

### **Restricting Children's access to your Phone**

Your phone is not a toy. Children should not be allowed to play with it because they could hurt themselves and others, damage the phone or make calls that increase your phone bill.

## FCC Notice and Cautions

### FCC Notice

- ☑ • This device complies with Part 15 of the FCC Rules. Operation is subject to the following two conditions: (1) this device may not cause harmful interference, and (2) this device must accept any interference received, including interference that may cause undesired operation.
- This equipment has been tested and found to comply with the limits for a Class B digital device, pursuant to part 15 of the FCC Rules. These limits are designed to provide reasonable protection against harmful interference in a residential installation. This equipment generates, uses and can radiate radio frequency energy and, if not installed and used in accordance with the instructions, may cause harmful interference to radio communications. However, there is no guarantee that interference will occur in a particular installation.



If this equipment does cause harmful interference to radio or television reception, which can be determined by turning the equipment off and on, the user is encouraged to try to correct the interference by one or more of the following measures:

- Reorient or relocate the receiving antenna.
- Increase the separation between the equipment and receiver.
- Connect the equipment into an outlet on a circuit different from that to which the receiver is connected.
- Consult the dealer or an experienced radio/TV technician for help.

The phone may cause TV or radio interference if used in close proximity to receiving equipment. The FCC can require you to stop using the phone if such interference cannot be eliminated. Vehicles using liquefied petroleum gas (such as propane or butane) must comply with the National Fire Protection Standard (NFPA-58).

For a copy of this standard, contact the National Fire Protection Association, One Battery march Park, Quincy, MA 02269, Attn: Publication Sales Division.

### **Cautions**

Changes or modifications made in the radio phone, not expressly approved by Samsung, will void the user's authority to operate the equipment.

Only use approved batteries, antennas and chargers. The use of any unauthorized accessories may be dangerous and void the phone warranty if said accessories cause damage or a defect to the phone.

Although your phone is quite sturdy, it is a complex piece of equipment and can be broken. Avoid dropping, hitting, bending or sitting on it.

### **Other Important Safety Information**

- Only qualified personnel should service the phone or install the phone in a vehicle. Faulty installation or service may be dangerous and may invalidate any warranty applicable to the device.
- Check regularly that all wireless phone equipment in your vehicle is mounted and operating properly.
- Do not store or carry flammable liquids, gases or explosive materials in the same compartment as the phone, its parts or accessories.
- For vehicles equipped with an air bag, remember that an air bag inflates with great force. Do not place objects, including both installed or portable wireless equipment in the area over the air bag or in the air bag deployment area. If wireless equipment is improperly installed and the air bag inflates, serious injury could result.
- Switch your phone off before boarding an aircraft. The use of wireless phone in aircraft is illegal and may be dangerous to the aircraft's operation.
- Failure to observe these instructions may lead to the suspension or denial of telephone services to the offender, or legal action, or both.

## Product Performance

---

### Getting the Most Out of Your Signal Reception

The quality of each call you make or receive depends on the signal strength in your area. Your phone informs you of the current signal strength by displaying a number of bars next to the signal strength icon. The more bars displayed, the stronger the signal. If you're inside a building, being near a window may give you better reception.

### Understanding the Power Save Feature

If your phone is unable to find a signal after 15 minutes of searching, a Power Save feature is automatically activated. If your phone is active, it periodically rechecks service availability or you can check it yourself by pressing any key.

Anytime the Power Save feature is activated, a message displays on the screen. When a signal is found, your phone returns to standby mode.

### Understanding How Your Phone Operates

Your phone is basically a radio transmitter and receiver. When it's turned on, it receives and transmits radio frequency (RF) signals. When you use your phone, the system handling your call controls the power level. This power can range from 0.006 watts to 0.2 watts in digital mode.

### Maintaining Your Phone's Peak Performance

For the best care of your phone, only authorized personnel should service your phone and accessories. Faulty service may void the warranty.

There are several simple guidelines to operating your phone properly and maintaining safe, satisfactory service.

- Hold the phone with the antenna raised, fully-extended and over your shoulder.
- Try not to hold, bend or twist the phone's antenna.
- Don't use the phone if the antenna is damaged.

- Speak directly into the phone's receiver.
- Avoid exposing your phone and accessories to rain or liquid spills. If your phone does get wet, immediately turn the power off and remove the battery. If it is inoperable, call Customer Care for service.

### **Availability of Various Features/ Ring Tones**

---

Many services and features are network dependent and may require additional subscription and/or usage charges. Not all features are available for purchase or use in all areas. Downloadable Ring Tones may be available at an additional cost. Other conditions and restrictions may apply. See your service provider for additional information.

### **Battery Standby and Talk Time**

---

Standby and talk times will vary depending on phone usage patterns and conditions. Battery power consumption depends on factors such as network configuration, signal strength, operating temperature, features

selected, frequency of calls, and voice, data, and other application usage patterns.

### **Battery Precautions**

---

- Never use any charger or battery that is damaged in any way.
- Use the battery only for its intended purpose.
- If you use the phone near the network's base station, it uses less power; talk and standby time are greatly affected by the signal strength on the cellular network and the parameters set by the network operator.
- Battery charging time depends on the remaining battery charge and the type of battery and charger used. The battery can be charged and discharged hundreds of times, but it will gradually wear out. When the operation time (talk time and standby time) is noticeably shorter than normal, it is time to buy a new battery.
- If left unused, a fully charged battery will discharge itself over time.
- Use only Samsung-approved batteries and recharge your battery only with

Samsung-approved chargers. When a charger is not in use, disconnect it from the power source. Do not leave the battery connected to a charger for more than a week, since overcharging may shorten its life.

- Extreme temperatures will affect the charging capacity of your battery: it may require cooling or warming first.
- Do not leave the battery in hot or cold places, such as in a car in summer or winter conditions, as you will reduce the capacity and lifetime of the battery. Always try to keep the battery at room temperature. A phone with a hot or cold battery may temporarily not work, even when the battery is fully charged. Li-ion batteries are particularly affected by temperatures below 0 °C (32 °F).
- Do not short-circuit the battery. Accidental short-circuiting can occur when a metallic object (coin, clip or pen) causes a direct connection between the + and - terminals of the battery (metal strips on the battery), for example when you carry a spare battery in a pocket or

bag. Short-circuiting the terminals may damage the battery or the object causing the short-circuiting.

## Care and Maintenance

Your phone is a product of superior design and craftsmanship and should be treated with care. The suggestions below will help you fulfill any warranty obligations and allow you to enjoy this product for many years.

- Keep the phone and all its parts and accessories out of the reach of small children.
- Keep the phone dry. Precipitation, humidity and liquids contain minerals that will corrode electronic circuits.
- Do not use the phone with a wet hand. Doing so may cause an electric shock to you or damage to the phone.
- Do not use or store the phone in dusty, dirty areas, as its moving parts may be damaged.
- Do not store the phone in hot areas. High temperatures can shorten the life of



electronic devices, damage batteries, and warp or melt certain plastics.

- Do not store the phone in cold areas. When the phone warms up to its normal operating temperature, moisture can form inside the phone, which may damage the phone's electronic circuit boards.
- Do not drop, knock or shake the phone. Rough handling can break internal circuit boards.
- Do not use harsh chemicals, cleaning solvents or strong detergents to clean the phone. Wipe it with a soft cloth slightly dampened in a mild soap-and-water solution.
- Do not paint the phone. Paint can clog the device's moving parts and prevent proper operation.
- Do not put the phone in or on heating devices, such as a microwave oven, a stove or a radiator. The phone may explode when overheated.
- When the phone or battery gets wet, the label indicating water damage inside the phone changes color. In this case, phone

repairs are no longer guaranteed by the manufacturer's warranty, even if the warranty for your phone has not expired.

- If your phone has a flash or light, do not use it too close to the eyes of people or animals. This may cause damage to their eyes.
- Use only the supplied or an approved replacement antenna. Unauthorized antennas or modified accessories may damage the phone and violate regulations governing radio devices.
- If the phone, battery, charger or any accessory is not working properly, take it to your nearest qualified service facility. The personnel there will assist you, and if necessary, arrange for service.

# Index

## A

- AB mode, text input • 28
- Active flip • 86
- Alarm • 47
- Answering
  - call • 31
  - second call • 32
- Anykey answer • 86
- Auto redial • 86

## B

- Background image • 86
- Backlight, set
  - display • 88
  - keypad • 89
- Barring, calls • 89
- Battery
  - charging • 7
  - low indicator • 8
- Broadcast messages • 59, 68
- Browser, web • 50

## C

- Calculator • 47
- Calendar • 75
- Call cost • 36
- Call log
  - dialled • 35
  - missed • 35
  - received • 35

- Call time • 35
- Caller groups • 38
- Caller ID • 87, 90
- Calls
  - answering • 31
  - barring • 89
  - diverting • 89
  - holding • 32
  - redialling • 30
  - rejecting • 31
  - waiting • 90
- Camera
  - photos • 79
  - videos • 81
- CB (Cell Broadcast) messages • 59, 68
- Characters, enter • 28
- Configuration messages • 57
- Connection tone • 88
- Converter • 48
- Creating messages
  - e-mail • 55
  - MMS • 54
  - SMS • 53
- CUG (Closed User Group) • 91

## D

- Date, set • 84
- Deleting
  - call log • 34

- e-mail • 60, 61, 62
- events • 77
- MMS • 58, 60, 62
- phonebook • 37, 40
- SMS • 58, 60, 62

- Dialled calls • 35
- Dialling font, set • 87

## Display

- brightness • 87
- icons • 11, 12
- language • 85
- layout • 11
- settings • 86
- Diverting, calls • 89
- Document files • 73
- DRM (Digital Rights Management) • 69
- DTMF tones, send • 33

## E

### E-mails

- creating/sending • 55
- deleting • 61
- setting • 65
- viewing • 60

## F

- FDN (Fixed Dialling Number) mode • 95
- File manager • 69

- File viewer • 73
- Flip tone • 88
- G**
- Games • 45
- Greeting message • 85
- H**
- Health and safety • 99
- Holding, call • 32
- I**
- Icons, description • 11
- Image editor • 44
- Images, downloaded • 69
- Inbox, messages
  - e-mail • 60
  - MMS/SMS • 57
- International calls • 30
- Internet • 50
- J**
- Java applications • 45
- K**
- Key tones
  - selecting • 87
  - sending/muting • 33
- L**
- Language, select • 85
- Last number, redial • 30
- Light settings • 88
- Locking
  - menu functions • 54
    - deleting • 58
    - setting • 64
    - viewing • 57
  - phone • 94
  - SIM card • 94
- Low battery indicator • 8
- M**
- Memory card
  - accessing files • 75
  - installing • 25
- Memory status
  - downloaded items • 75
  - file manager • 75
  - messages • 68
  - phonebook 40
- Menu style • 87
- Message tone • 87
- Messages
  - cell broadcast • 59, 68
  - configuration • 58
  - e-mail • 55, 60
  - greeting • 85
  - MMS • 54, 58
  - push • 59, 68
  - SMS • 53, 57
- Minute minder • 88
- Missed calls • 35
- MMS messages
  - creating/sending • 54
  - adding • 37
  - deleting • 37, 40
  - finding • 36
  - managing • 39
  - options • 37
  - speed dialling • 38
- Mobile tracker • 95
- Multiparty-call • 34
- Music, downloaded • 72
- My menu • 15
- N**
- Name card • 39
- Names
  - entering • 28
  - searching • 36
- Network selection • 90
- Network services • 89
- O**
- Outbox, messages • 59
- P**
- Password
  - call barring • 90
  - phone • 94
- Phone
  - display • 11
  - icons • 11
  - locking • 94
  - password • 94
  - resetting • 97
  - switching on/off • 8
  - unpacking • 6, 8
- Phonebook
  - incoming calls • 87
- Photos
  - taking • 79
  - viewing • 69
- PIN, change • 94
- PIN2, change • 95
- Power on/off tone • 88
- Privacy • 94
- Push messages • 59, 68
- Q**
- Quiet mode
  - switching • 15
- R**
- Received calls • 35
- Received messages
  - e-mail • 60
  - MMS/SMS • 57
- Recording
  - videos • 81
  - voice memos • 43
- Redialling
  - automatically • 86
  - manually • 30
- Resetting phone • 97
- Ringer
  - incoming calls • 87

messages • 87  
Roaming • 90

## S

Safety  
    information • 99  
    precautions • 1  
Security, calls • 94  
Sent messages • 60  
Shortcut • 85  
Silent mode  
    setting • 88  
SIM card  
    inserting • 7  
    locking • 94  
Skin colour • 87  
SMS messages  
    creating/sending •  
        53  
    deleting • 58  
    setting • 63  
    viewing • 57  
Sound settings • 87  
Sounds, downloaded • 72  
Speakerphone • 33  
Speed dial • 38  
Stopwatch • 48  
Switching on/off  
    phone • 8

## T

T9 mode, text input • 29

Templates, message • 62  
Text, enter • 28  
Time, set • 84  
Timer • 48

## V

Videos  
    playing • 70  
    recording • 81  
Voice recorder  
    playing • 43  
    recording • 43  
Voicemail server • 91

## W

Waiting call • 90  
Wallpaper • 86  
Web browser  
    access • 50  
    bookmarks • 51  
World clock • 46